

V&V Reference Report

L2 ASCDS Version : 8.4.5

Observation 5314 - L2 Version 3
Chandra X-Ray Center

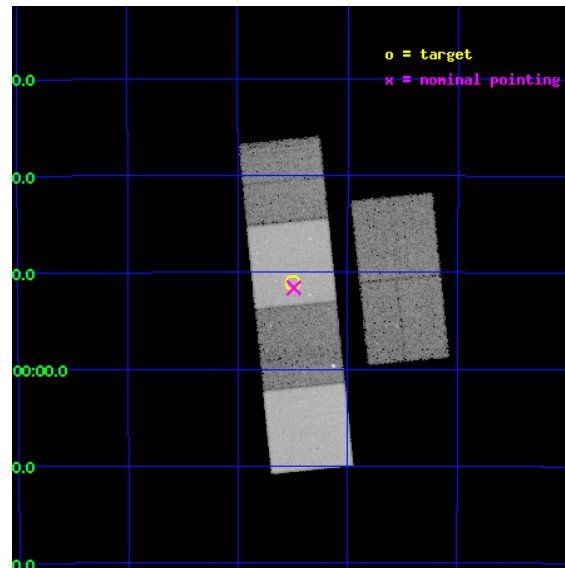
L2 Processing Date : Nov 30 2012

Contents

1	Front	2
2	OBI	3
2.1	OBI	3
2.1.1	Images	3
2.1.2	Bias	3
2.1.3	Parameters	4
2.1.4	Events	4
2.2	Compared Parameters	5
2.3	Aspect	6
2.4	Star Slots	9
2.4.1	Slot 3	9
2.4.2	Slot 4	10
2.4.3	Slot 5	11
2.4.4	Slot 6	12
2.4.5	Slot 7	13
2.5	FID Slots	14
2.5.1	Slot 0	14
2.5.2	Slot 1	15
2.5.3	Slot 2	16
A	Summary	17
A.1	Status	17
A.2	Comments	17

1 Front

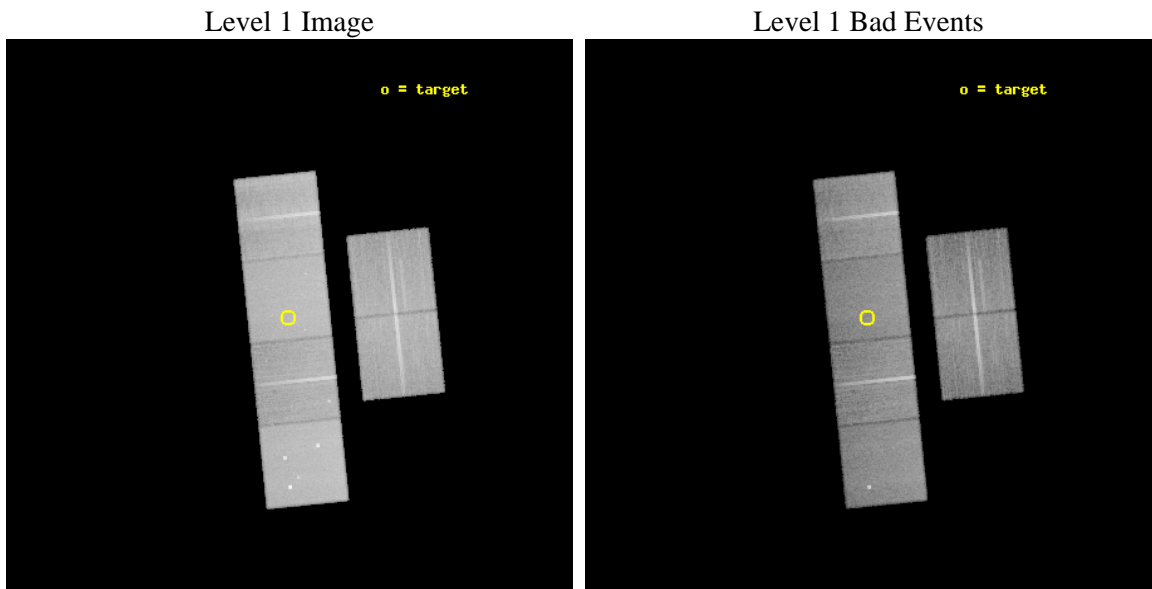
seq_num	500506	Sequence number
obs_id	5314	Observation id
title	Is GRB 031203 a GRB-SN seen off axis?	Proposal title
observer	Dr. CHRYSSA KOUVELIOTOU	Principal investigator
object	GRB031203	Source name
dtcycle	0	
cycle	P	events from which exps? Prim/Second/Both
ra_targ	120.625833	Observer's specified target RA [deg]
dec_targ	-39.850778	Observer's specified target Dec [deg]
ra_nom	120.62238633659	Nominal RA [deg]
dec_nom	-39.860090821658	Nominal Dec [deg]
roll_nom	264.14658449249	Nominal Roll [deg]
revision	3	Processing version of data
ontime	30156.799887657	Sum of GTIs [s]
livetime	29774.936329235	Livetime [s]
ontime2	30156.799887657	Sum of GTIs [s]
ontime3	30156.799887657	Sum of GTIs [s]
ontime5	30156.799887657	Sum of GTIs [s]
ontime6	30156.799887657	Sum of GTIs [s]
ontime7	30156.799887657	Sum of GTIs [s]
ontime8	30150.31789729	Sum of GTIs [s]
l2events	345828	Number of level 2 events



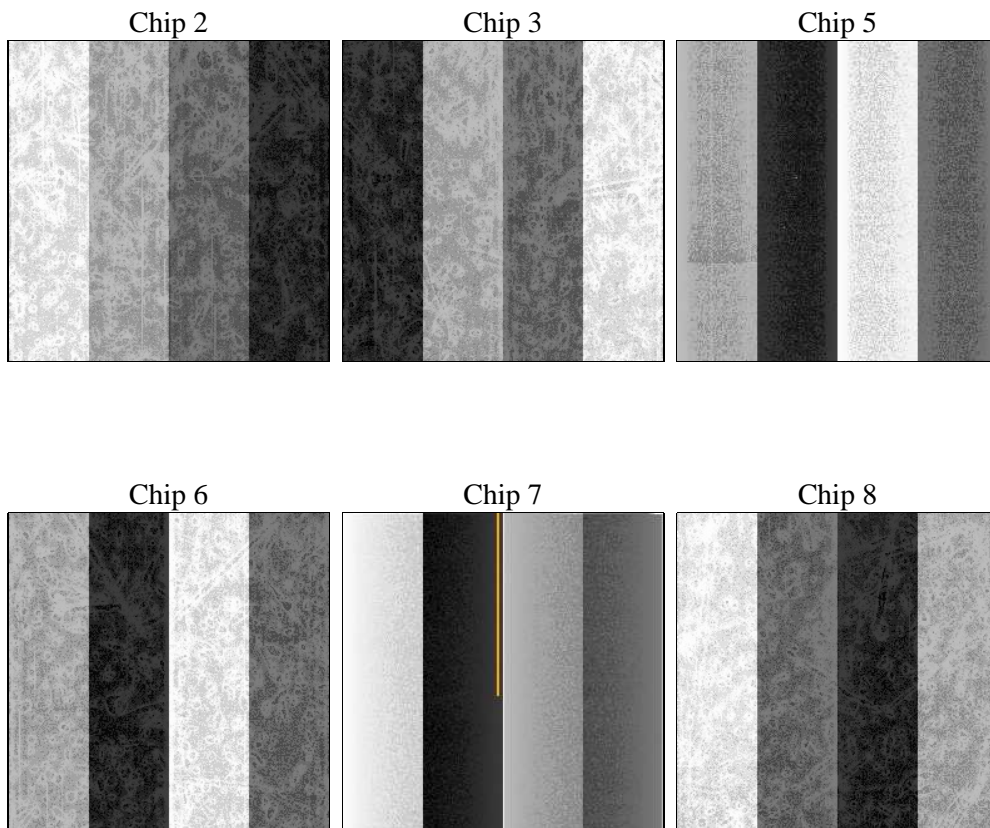
2 OBI

2.1 OBI

2.1.1 Images



2.1.2 Bias



2.1.3 Parameters

obi_num	0	Obi number	sched_exp_time	30000.000000	[s] Scheduled observation exposure time
ascdsver	8.4.5	Processing system revision	ontime	30156.799887657	Sum of GTIs [s]
caldsver	4.5.2	 	ontime2	30156.799887657	Sum of GTIs [s]
date	2012-11-30T14:08:01	Date and time of file creation	ontime3	30156.799887657	Sum of GTIs [s]
revision	3	Processing version of data	ontime5	30156.799887657	Sum of GTIs [s]
			ontime6	30156.799887657	Sum of GTIs [s]
			ontime7	30156.799887657	Sum of GTIs [s]
			ontime8	30150.31789729	Sum of GTIs [s]
			l1events	1611943	Number of level 1 events

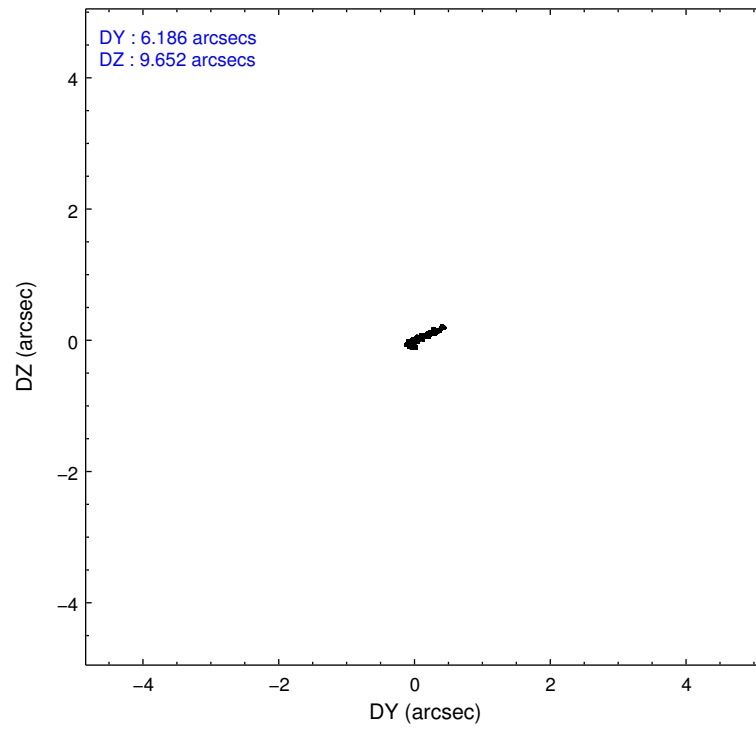
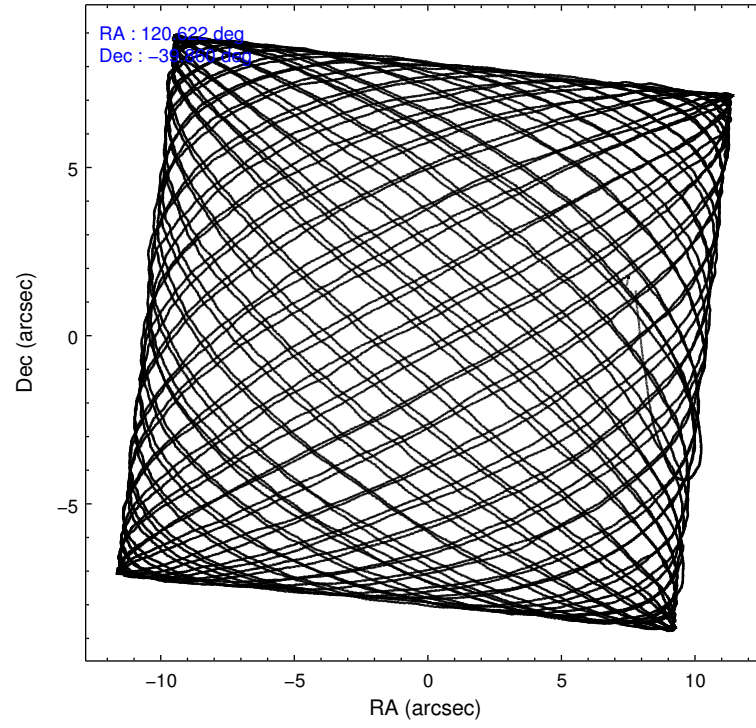
2.1.4 Events

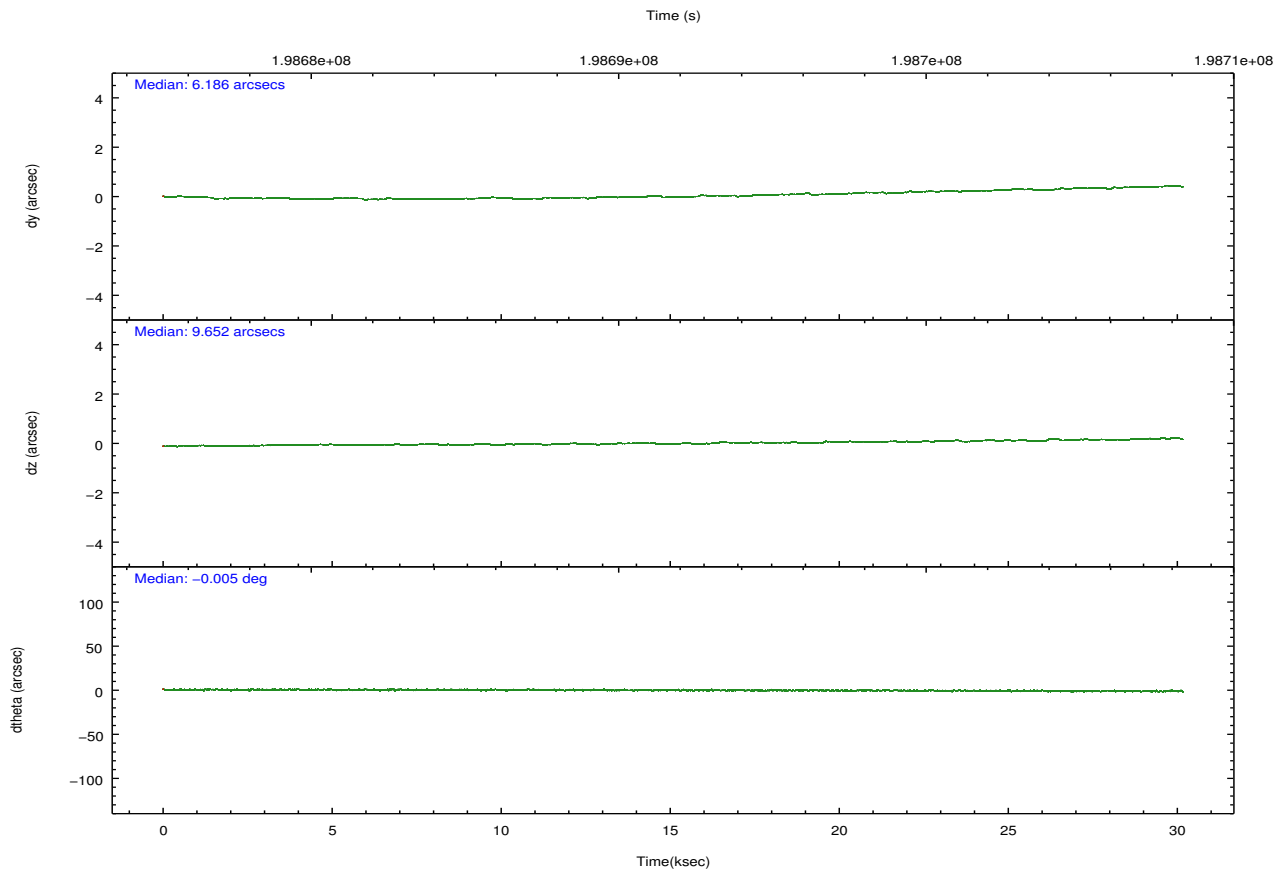
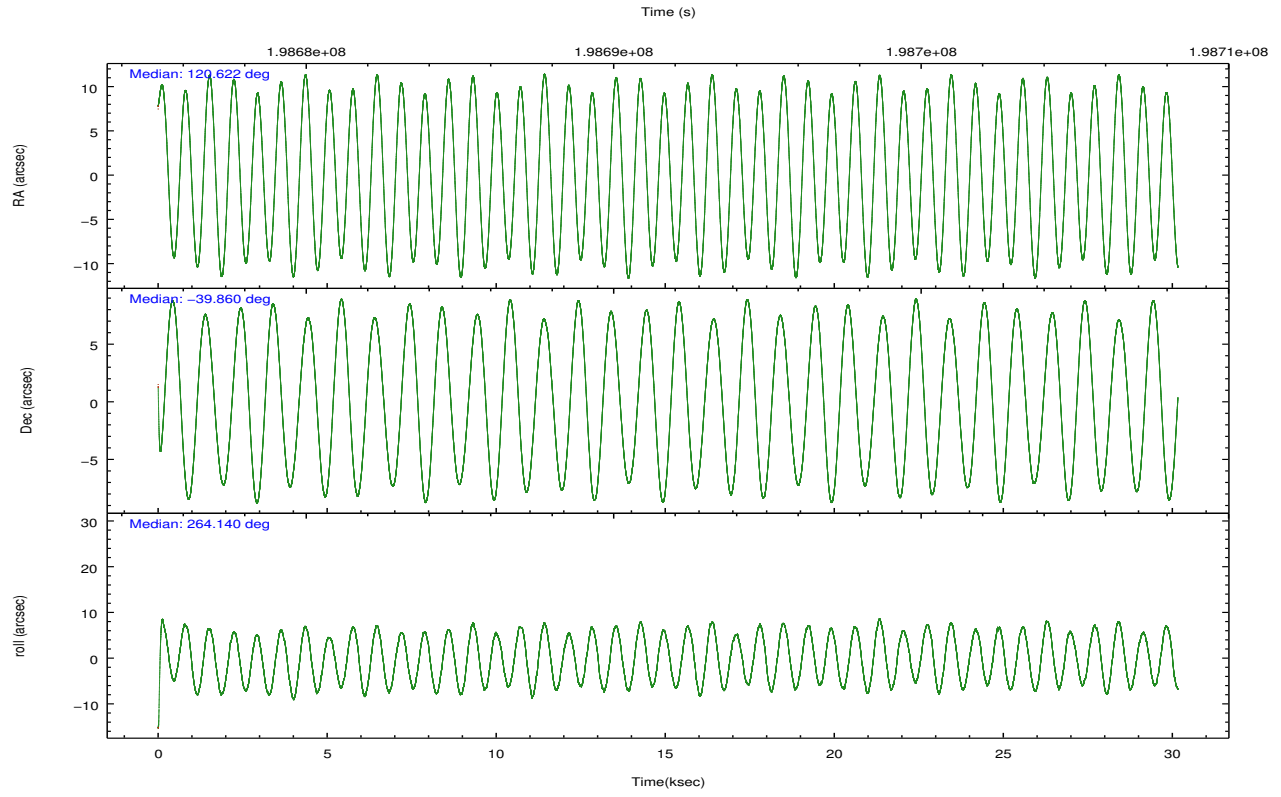
	ccd 2	ccd 3	ccd 5	ccd 6	ccd 7	ccd 8		ccd 2	ccd 3	ccd 5	ccd 6	ccd 7	ccd 8
level 1 events	228024	217117	340669	229682	307514	288937	grade 0 events	11826	11245	14898	11253	11452	19177
rejected events	202610	192531	194438	203280	186976	231166		5%	5%	4%	4%	3%	6%
rejected %	88%	88%	57%	88%	60%	80%	grade 1 events	164	121	409	123	291	186
								0%	0%	0%	0%	0%	0%
							grade 2 events	5377	4930	45300	5614	25038	12816
								2%	2%	13%	2%	8%	4%
							grade 3 events	2504	2589	6734	2721	11528	6576
								1%	1%	1%	1%	3%	2%
							grade 4 events	2495	2555	5585	2601	11153	6408
								1%	1%	1%	1%	3%	2%
							grade 5 events	9026	9832	26286	10489	29335	13509
								3%	4%	7%	4%	9%	4%
							grade 6 events	4508	4487	81212	5472	67422	15513
								1%	2%	23%	2%	21%	5%
							grade 7 events	192124	181358	160245	191409	151295	214752
								84%	83%	47%	83%	49%	74%

2.2 Compared Parameters

Parameter	Planned	Actual	Parameter	Planned	Actual
Instrument	ACIS	ACIS	Obspar format version number	7	7
Detector	ACIS-235678	ACIS-235678	Obspar file type	PREDICTED	ACTUAL
Grating	NONE	NONE	Obspar update status	NONE	UPDATED
Data mode	VFAINT	VFAINT	Number of optional ACIS chips dropped	0	0
Observation mode	POINTING	POINTING	On-chip summing requested	N	N
[deg] Pointing RA	120.607424	120.6223863365895	Subarray requested	NONE	NONE
[deg] Pointing Dec	-39.835380	-39.86009082165818	Alternating exposures requested	N	N
[deg] Pointing Roll	263.980383	264.1465844924925	[s] Primary exposure time	0.000000	3.2
[mm] SIM focus pos	-0.684267	-0.6828225247311905			
[mm] SIM defocus	0	0.001444936568705701			
[mm] SIM translation stage pos	-190.132523	-190.1400660498719			
[mm] SIM translation stage offset	0	0.00754346686406393			
[s] Observation start time (MET)	198676854.184000	198675041.08332			
Observation start date	2004-04-18T11:59:50	2004-04-18T11:30:41			
[s] Observation end time (MET)	198706854.184000	198708197.27228			
Observation end date	2004-04-18T20:19:50	2004-04-18T20:43:17			
Read mode	TIMED	TIMED			

2.3 Aspect



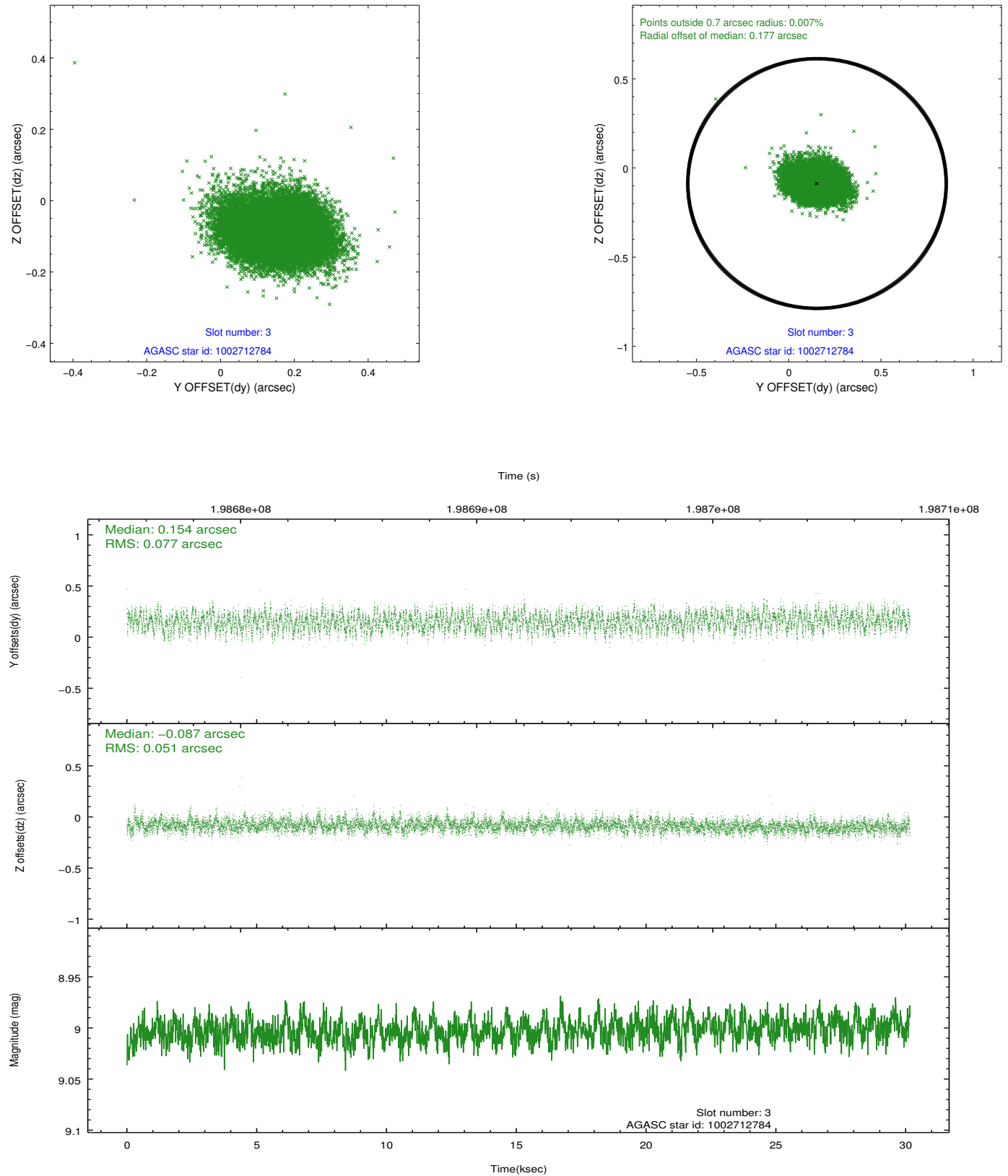


Slot Statistics

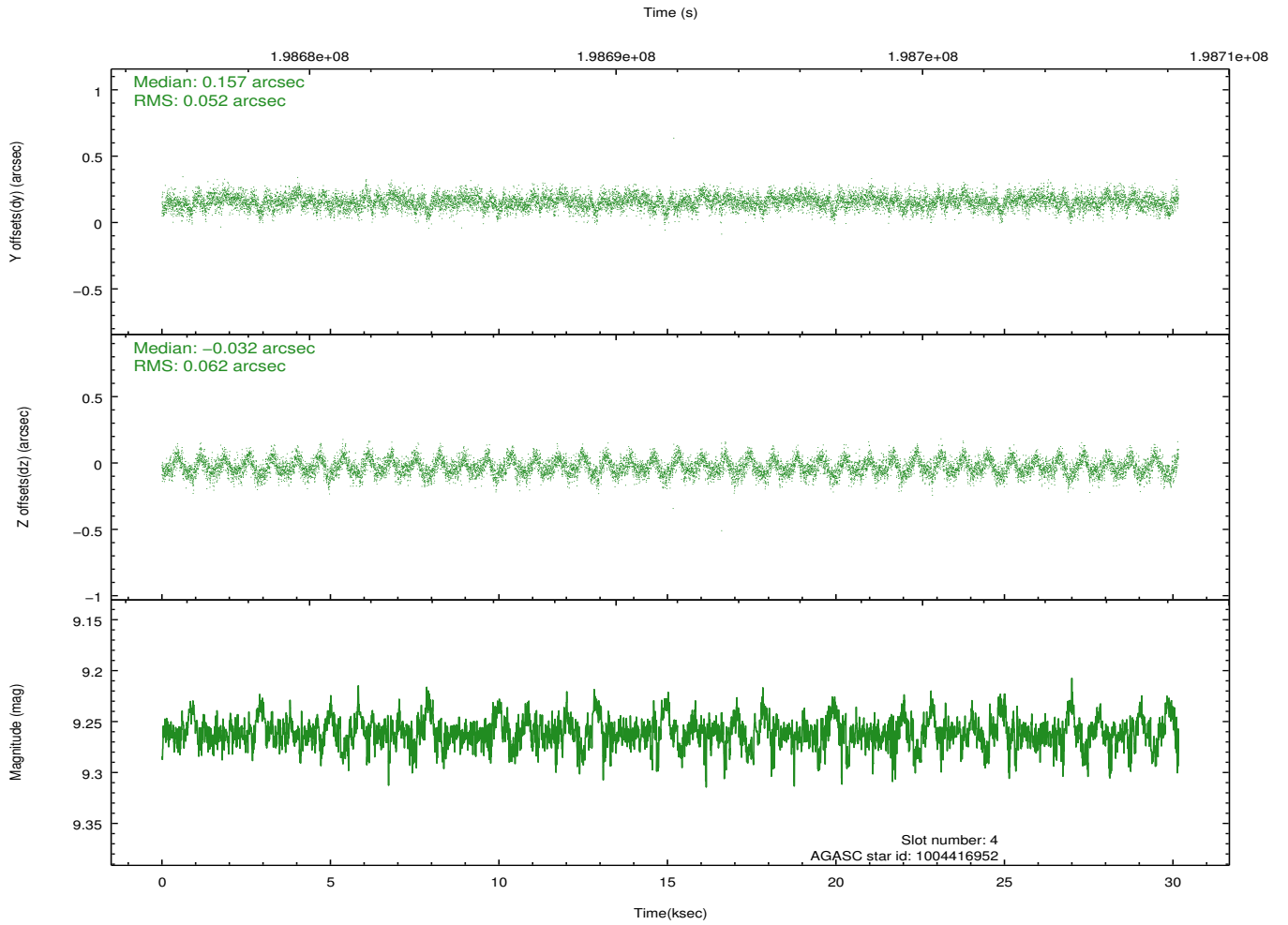
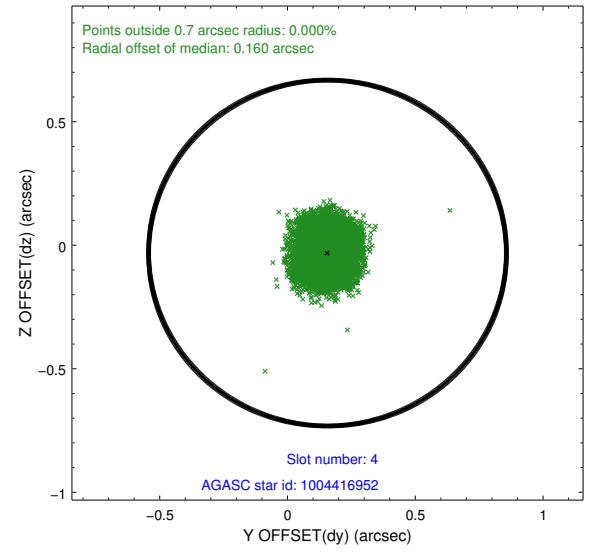
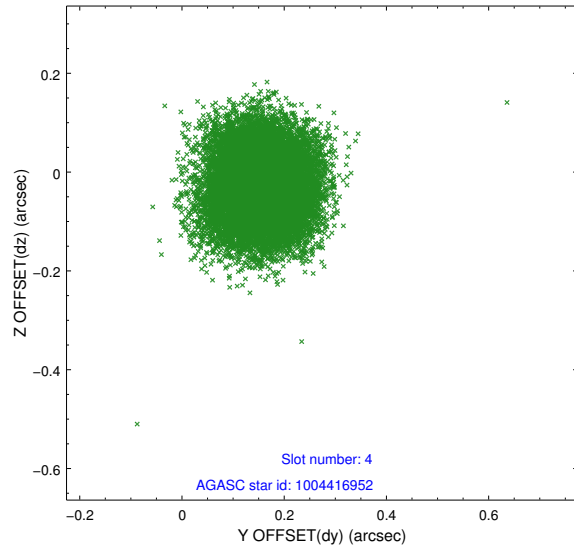
slot	status	id	mag	n_pts	med_dy	med_dz	dr1	dr2	ra	dec	mean_y	mean_z
0	FID	ACIS-S-1	7.18	7358	-0.004	-0.016	0.008	0.014	0.000000	0.000000	937.03	-1726.56
1	FID	ACIS-S-4	7.21	7358	0.072	0.018	0.007	0.011	0.000000	0.000000	2154.56	177.56
2	FID	ACIS-S-5	7.23	7357	-0.095	0.011	0.006	0.011	0.000000	0.000000	-1811.83	171.23
3	GUIDE	1002712784	9.00	14711	0.154	-0.087	0.097	0.157	119.710142	-40.342962	2088.56	-2255.24
4	GUIDE	1004416952	9.26	14695	0.157	-0.032	0.086	0.139	120.668606	-40.123891	1015.86	276.45
5	GUIDE	1004428200	9.34	14636	0.174	0.136	0.078	0.128	120.904943	-40.387705	1893.70	1020.57
6	GUIDE	1002714360	7.72	14714	-0.269	-0.026	0.071	0.117	119.781728	-39.420308	-1234.29	-2439.17
7	GUIDE	1004425112	8.88	14708	-0.208	0.014	0.110	0.167	121.364029	-39.923076	103.48	2111.41

2.4 Star Slots

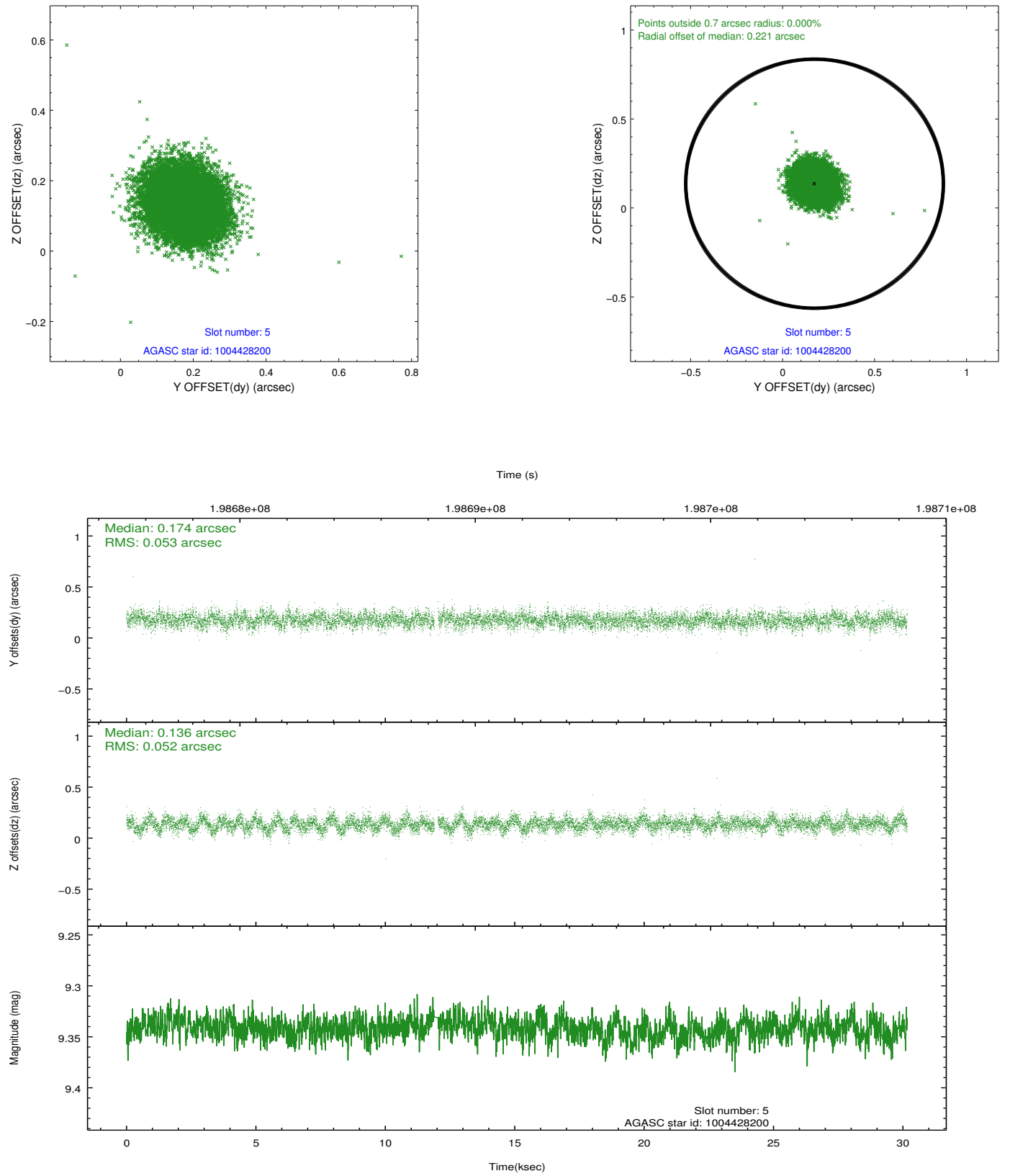
2.4.1 Slot 3



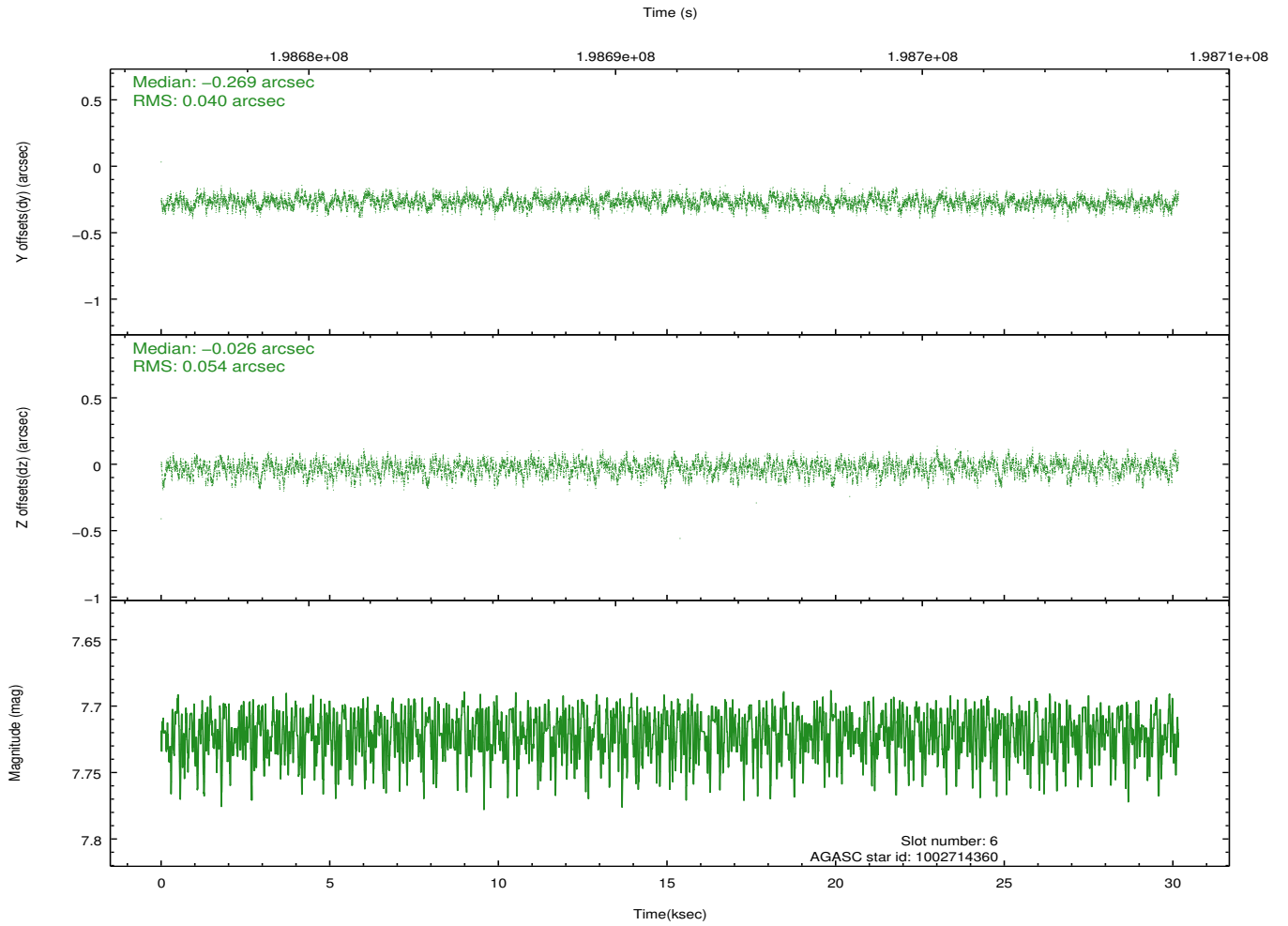
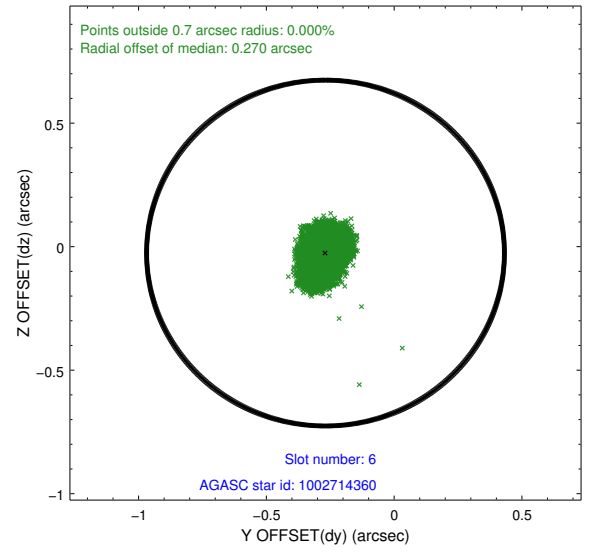
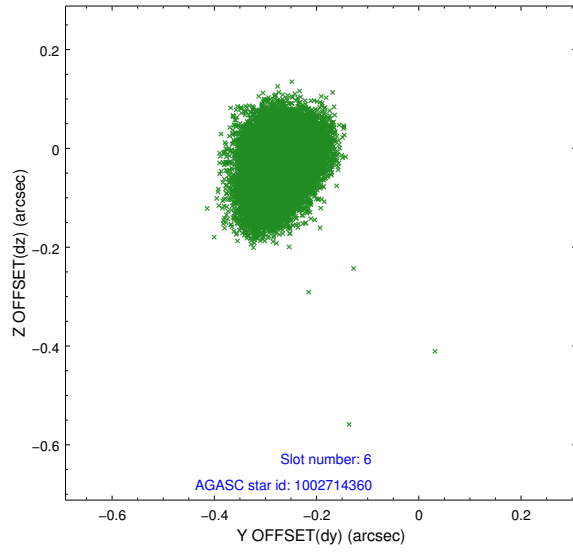
2.4.2 Slot 4



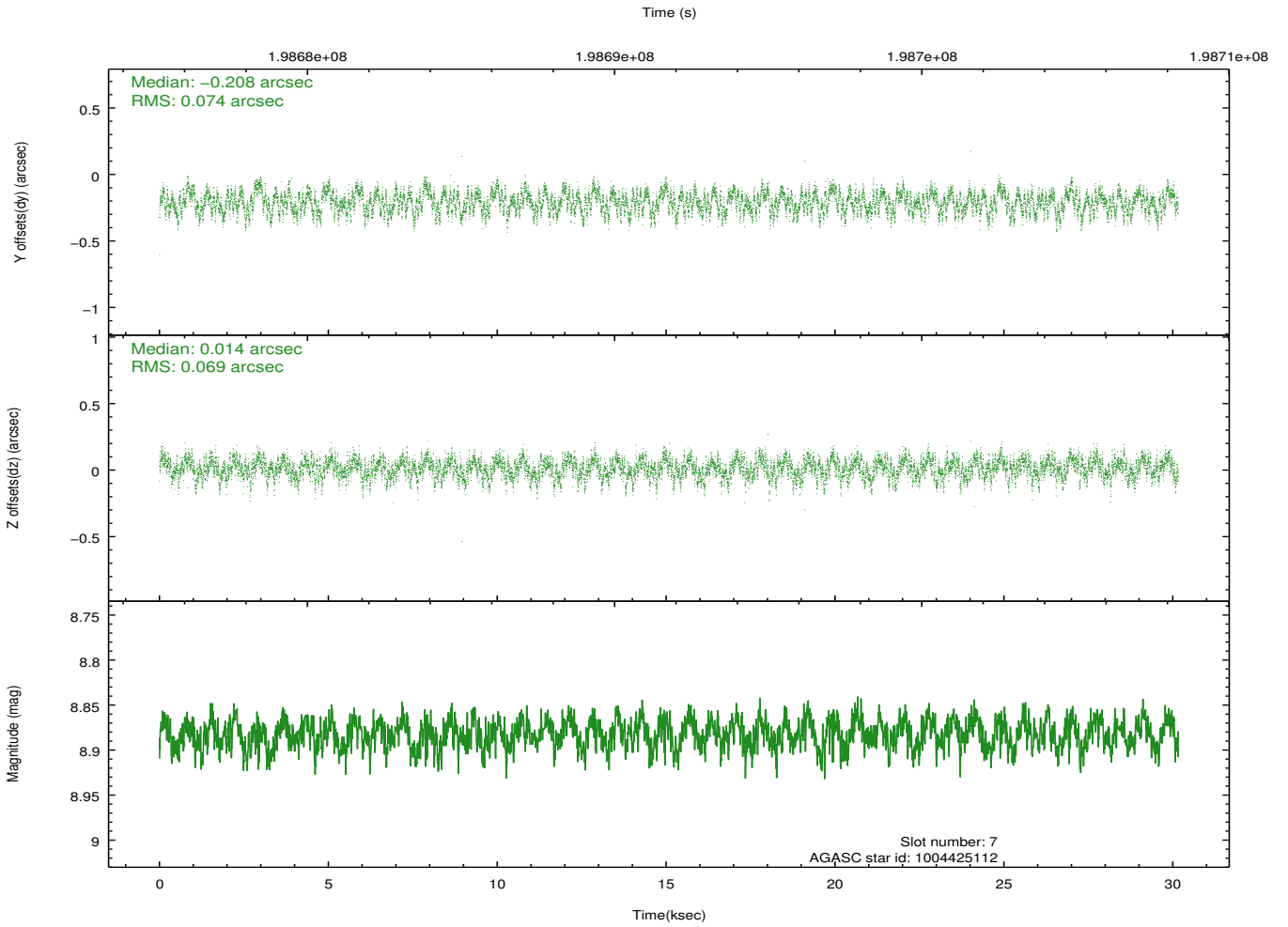
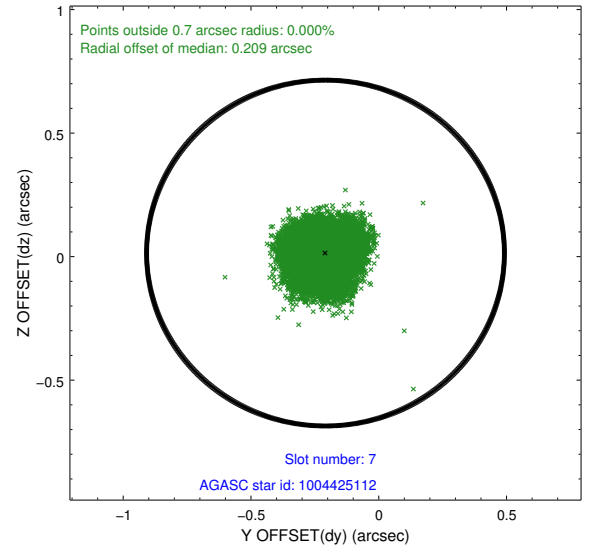
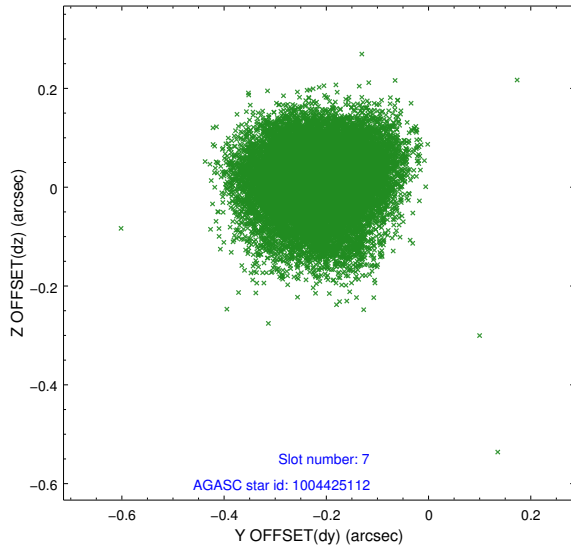
2.4.3 Slot 5



2.4.4 Slot 6

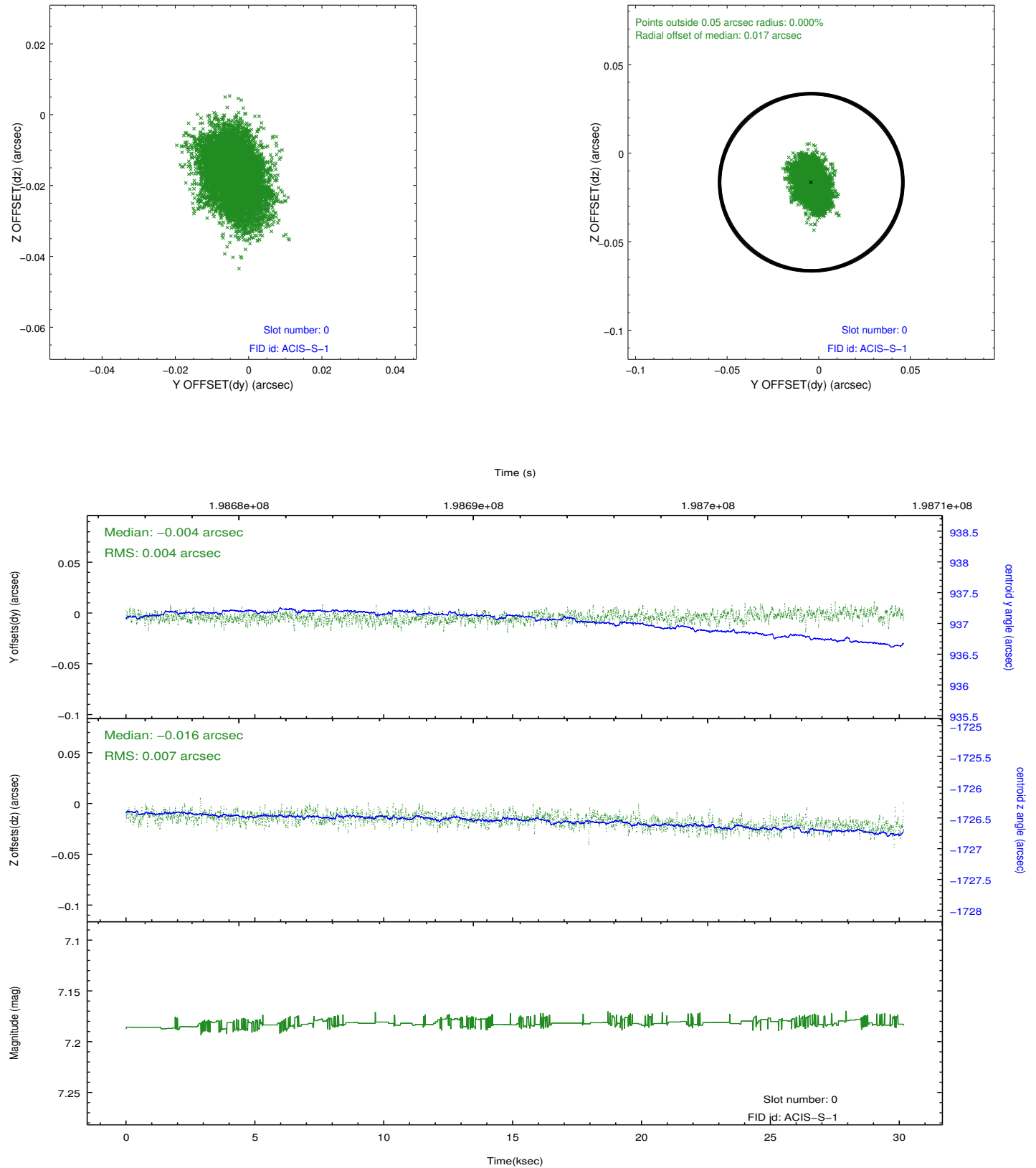


2.4.5 Slot 7

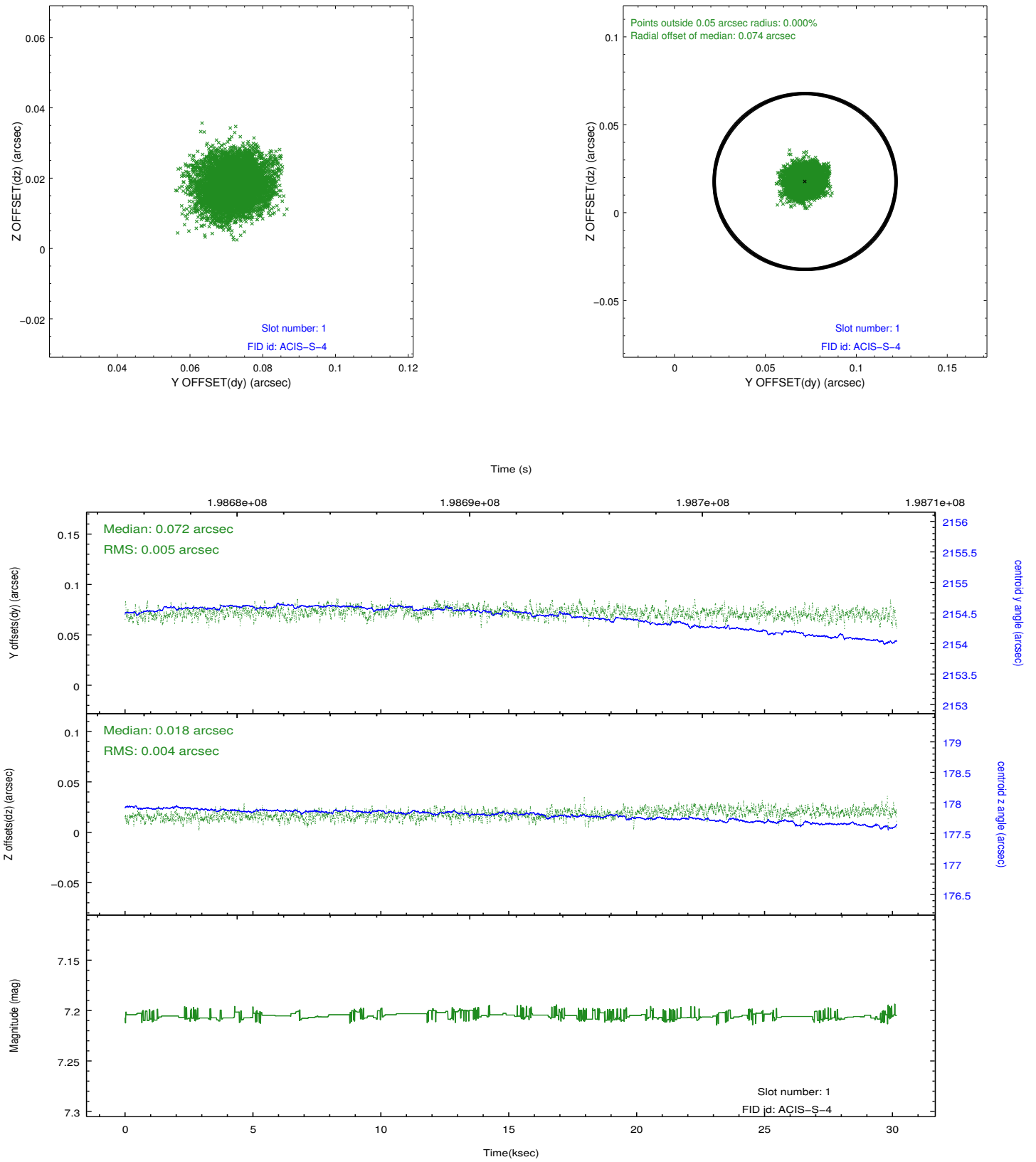


2.5 FID Slots

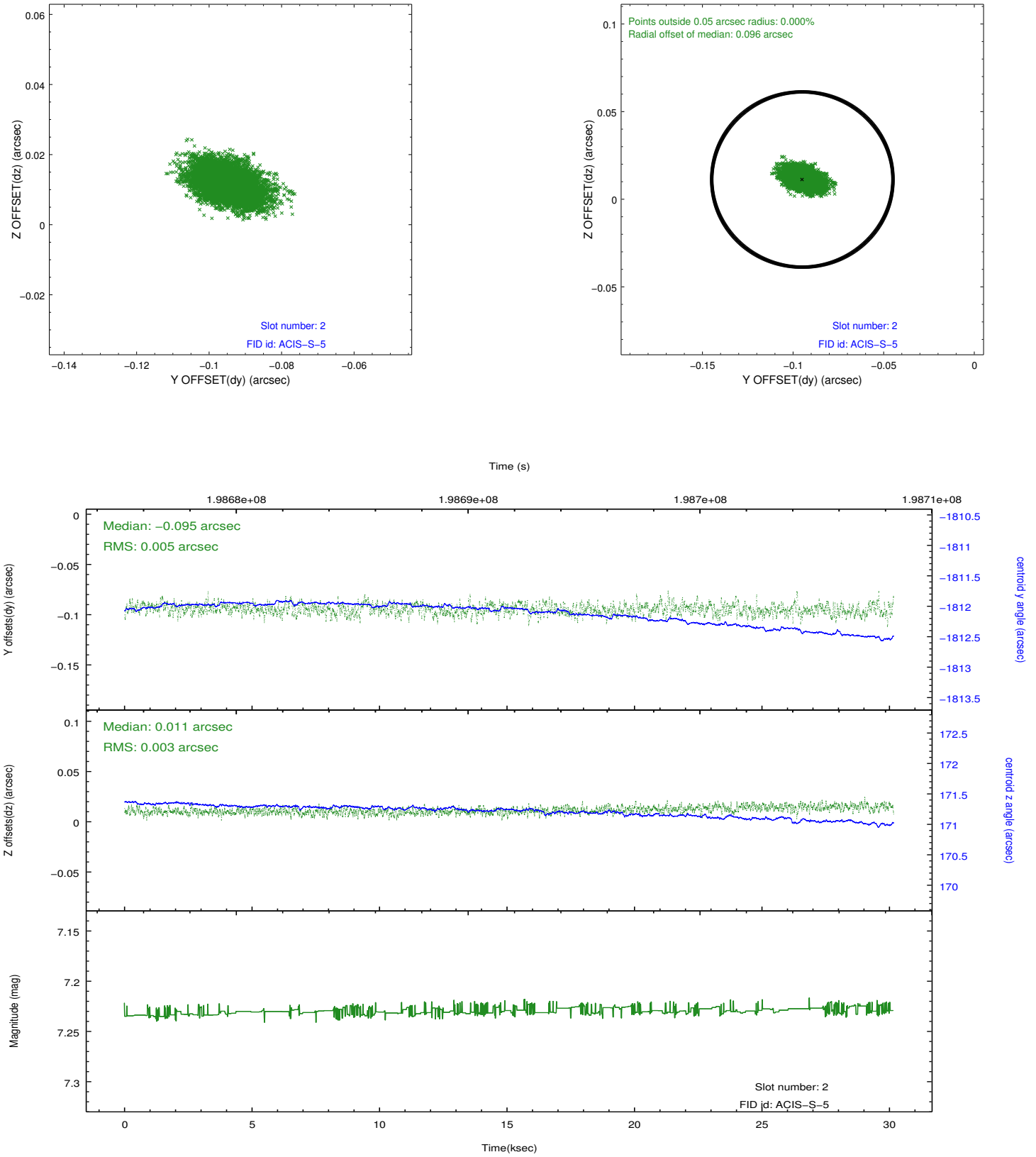
2.5.1 Slot 0



2.5.2 Slot 1



2.5.3 Slot 2



A Summary

A.1 Status

V&V Scientist	Jen Lauer
V&V Date (YYYY-MM-DD)	2012.12.14
V&V Edition	1
V&V Disposition and Status	OK
V&V Charge Time	30.156

A.2 Comments