

# V&V Reference Report

## L2 ASCDS Version : 7.6.7.2

Observation 5305 - L2 Version 001  
Chandra X-Ray Center

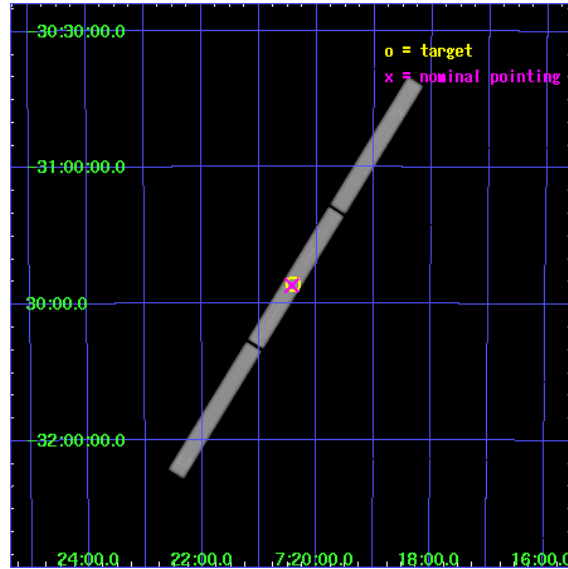
L2 Processing Date : May 31 2006

## Contents

<b>1</b>	<b>Front</b>	<b>2</b>
<b>2</b>	<b>OBI</b>	<b>3</b>
2.1	OBI . . . . .	3
2.1.1	Images . . . . .	3
2.1.2	Parameters . . . . .	4
2.1.3	Events . . . . .	4
2.2	Compared Parameters . . . . .	5
2.3	Aspect . . . . .	6
2.4	Star Slots . . . . .	9
2.4.1	Slot 3 . . . . .	9
2.4.2	Slot 4 . . . . .	10
2.4.3	Slot 5 . . . . .	11
2.4.4	Slot 6 . . . . .	12
2.4.5	Slot 7 . . . . .	13
2.5	FID Slots . . . . .	14
2.5.1	Slot 0 . . . . .	14
2.5.2	Slot 1 . . . . .	15
2.5.3	Slot 2 . . . . .	16
<b>3</b>	<b>Gratings</b>	<b>17</b>
3.1	LETG Arm . . . . .	17
<b>A</b>	<b>Summary</b>	<b>19</b>
A.1	Status . . . . .	19
A.2	Comments . . . . .	19

# 1 Front

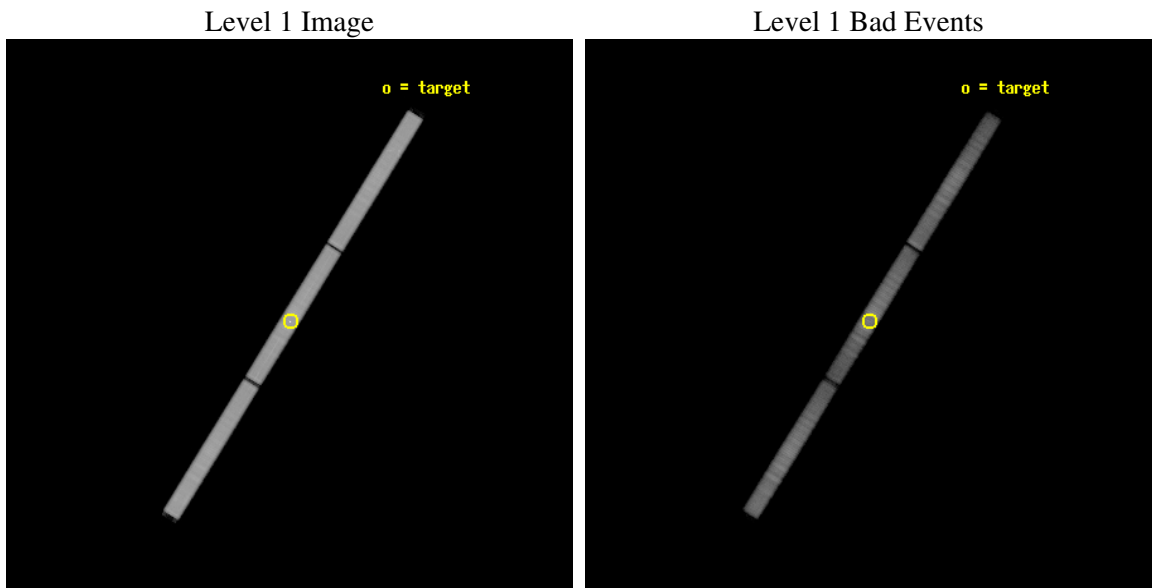
seq_num	500504
obs_id	5305
title	Monitoring the spectral evolution of RXJ0720-3125 and determining its nature.
observer	Dr. Jacco Vink
object	RX J0720-3125
ra_targ	110.104167
dec_targ	-31.430611
ra_nom	110.10691946229
dec_nom	-31.434616012851
roll_nom	301.72925285641
revision	2
ontime	35705.107813478
livetime	35684.763359014
l2events	1601481



## 2 OBI

### 2.1 OBI

#### 2.1.1 Images



### 2.1.2 Parameters

obi_num	0
ascdsver	7.6.7.2
caldbver	3.2.2
date	2006-05-31T07:14:49
revision	2

sched_exp_time	35875.000000
ontime	36049.251578569
l1events	2388780

### 2.1.3 Events

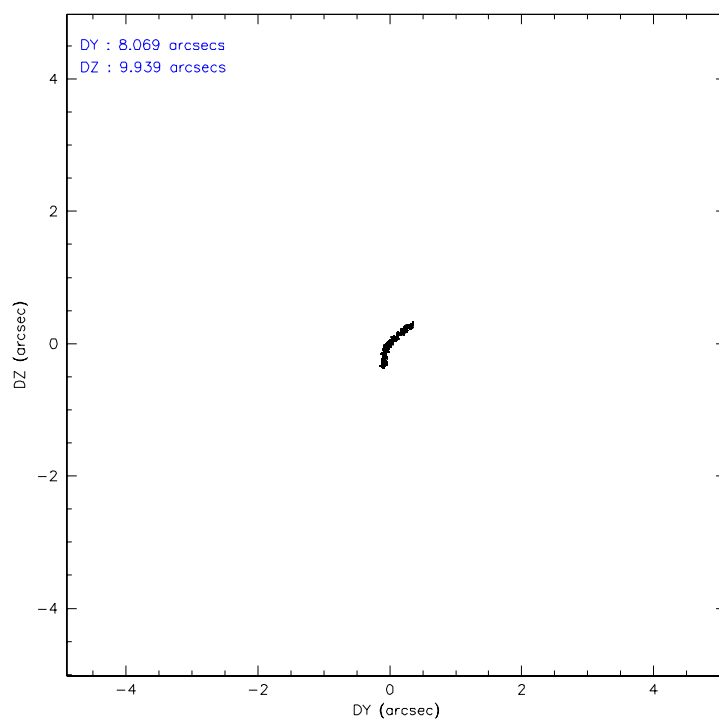
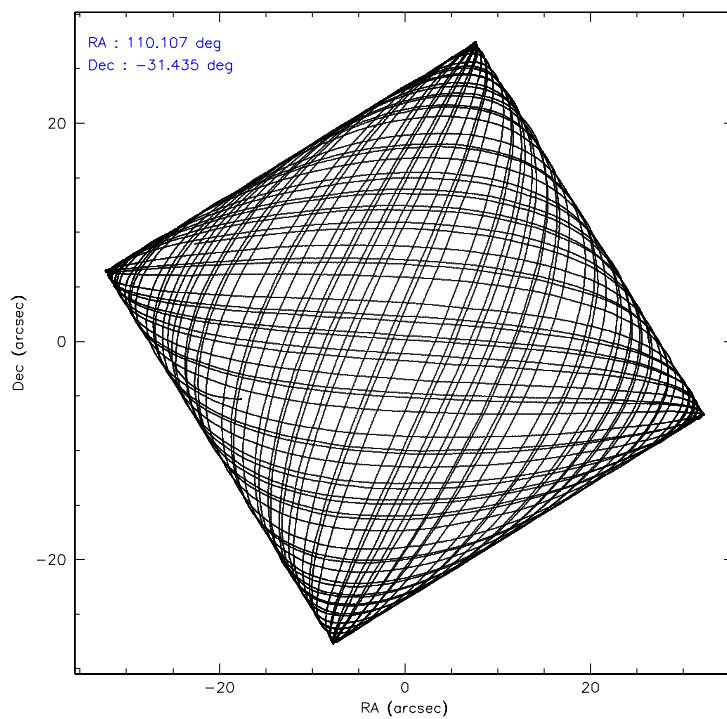
Level 1 Events

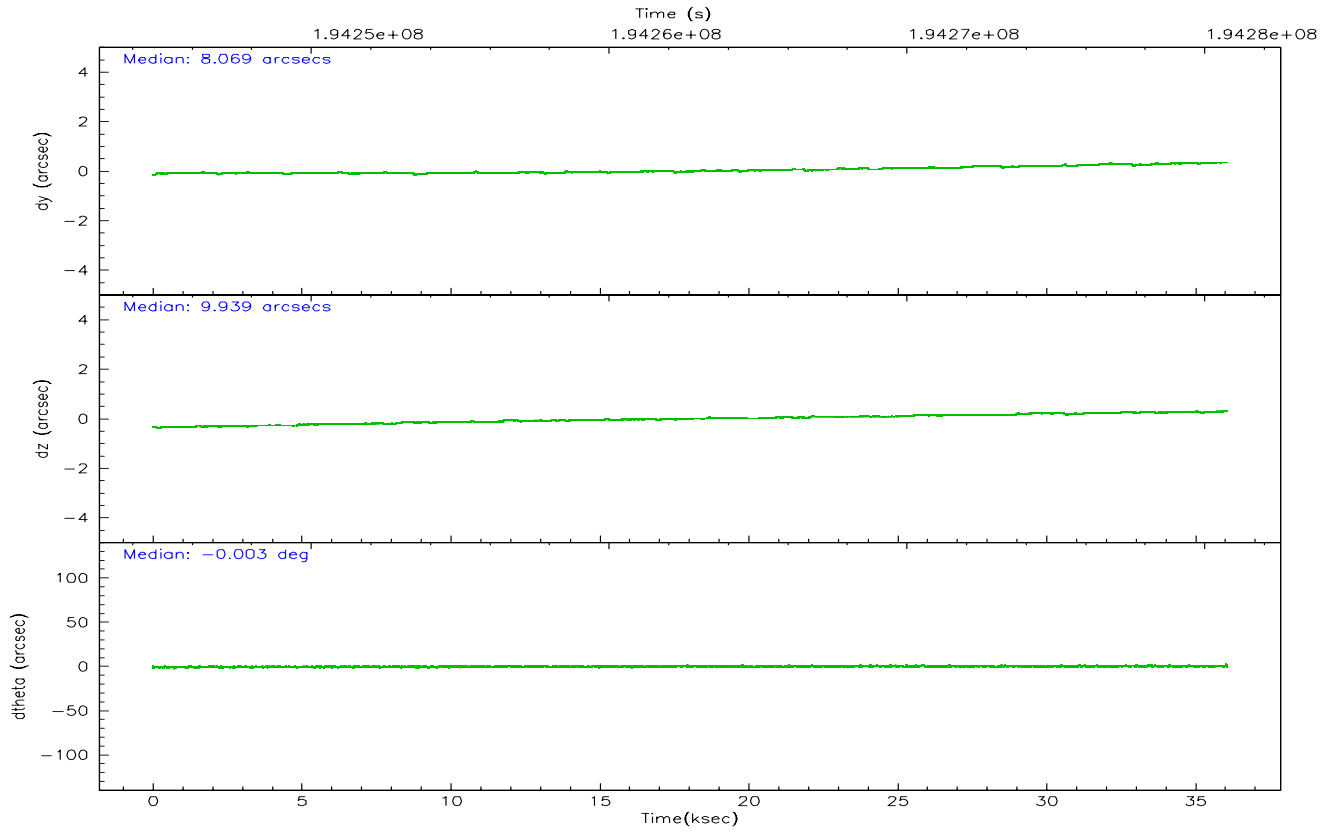
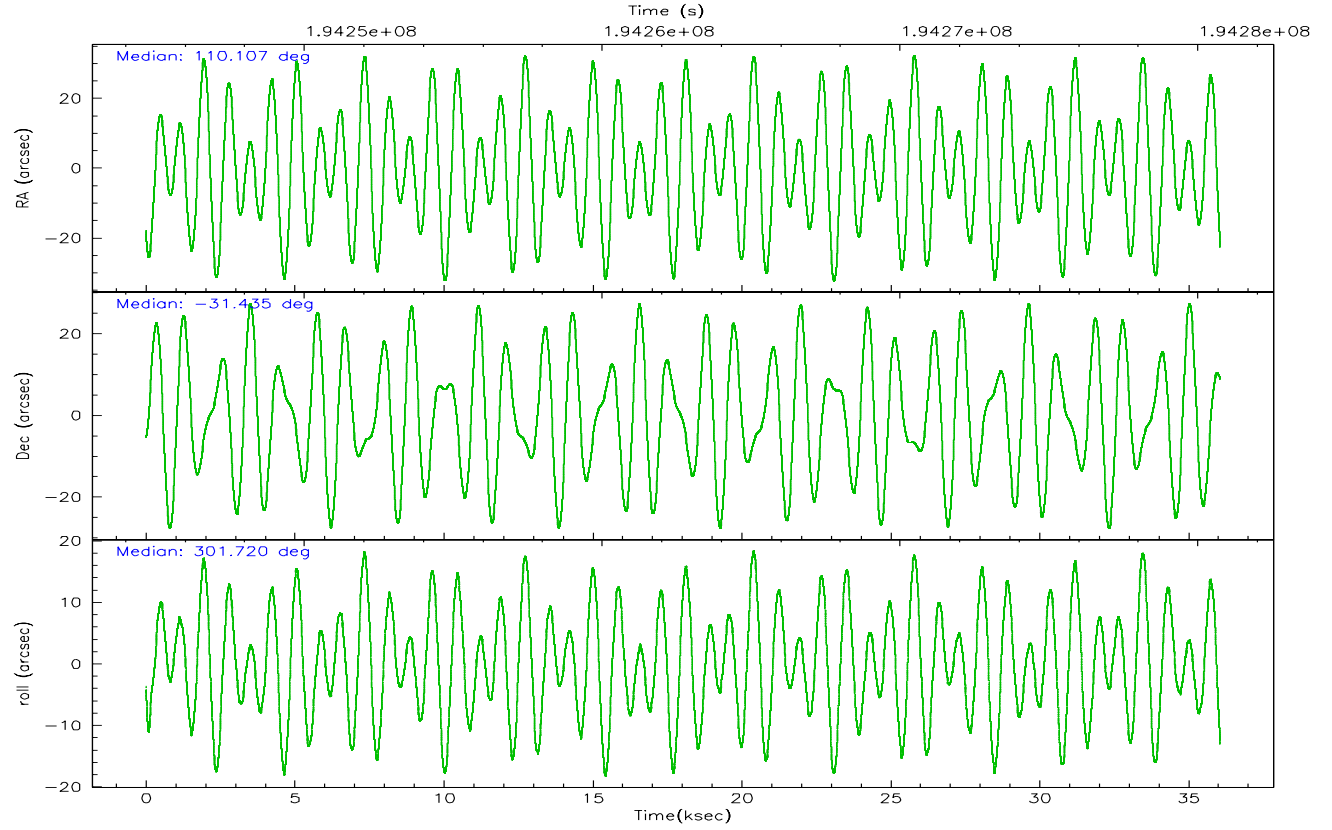
	<b>segment 1</b>	<b>segment 2</b>	<b>segment 3</b>
level 1 events	797485	788812	802483
rejected events	168015	183580	204375
rejected %	21%	23%	25%

## 2.2 Compared Parameters

Parameter	Planned	Actual	Parameter	Planned	Actual
Instrument	HRC	HRC	Obspar format version number	6	6
Detector	HRC-S	HRC-S	Obspar file type	PREDICTED	ACTUAL
Grating	LETG	LETG	Obspar update status	NONE	UPDATED
Data mode	OBSERVING	OBSERVING			
Observation mode	POINTING	POINTING			
Pointing RA	110.076643	110.1069194622944			
Pointing Dec	-31.422377	-31.4346160128505			
Pointing Roll	301.646126	301.7292528564122			
SIM focus pos (mm)	-1.429586	-1.428180813131781			
SIM defocus (mm)	0.1037507710433287	0.1051558262725154			
SIM translation stage pos (mm)	250.455976	250.4635187648994			
SIM translation stage offset (mm)	0	-0.007540371344731511			
Observation start time	194244870.184000	194244158.07621			
Observation start date	2004-02-27T04:53:26	2004-02-27T04:42:38			
Observation end time	194280745.184000	194281499.34035			
Observation end date	2004-02-27T14:51:21	2004-02-27T15:04:59			

## 2.3 Aspect





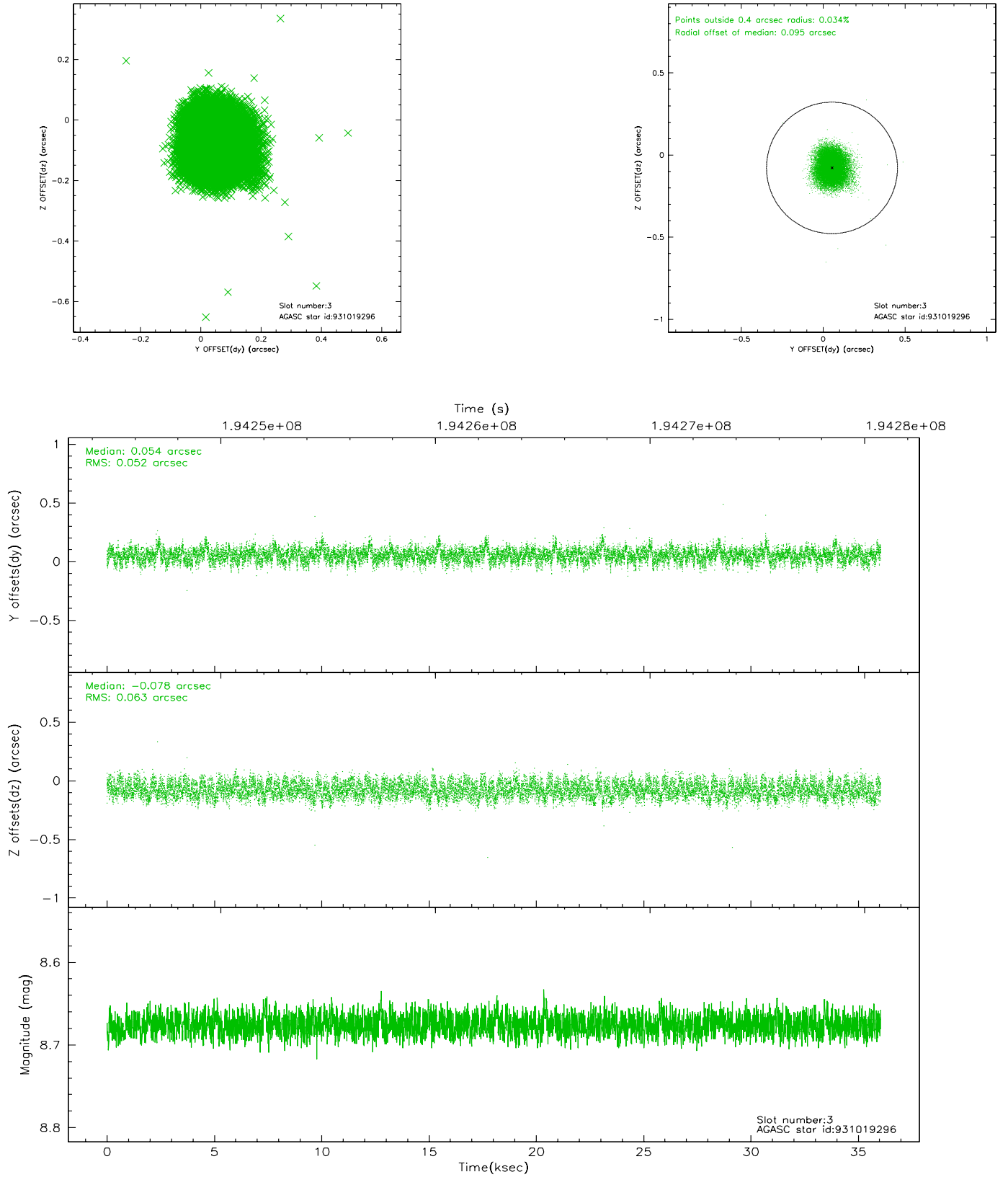
### Slot Statistics

slot	status	id	mag	n_pts	med_dy	med_dz	dr1	dr2	ra	dec	mean_y	mean_z
0	FID	HRC-S-1	6.99	8793	0.151	-0.187	0.008	0.013	0.000000	0.000000	-1162.28	-458.58
1	FID	HRC-S-2	6.98	8794	0.129	-0.109	0.005	0.010	0.000000	0.000000	1237.25	-451.22
2	FID	HRC-S-3	7.00	8795	0.110	-0.006	0.008	0.014	0.000000	0.000000	-1164.89	571.08
3	GUIDE	931019296	8.68	17586	0.054	-0.078	0.088	0.136	109.471771	-31.694370	-133.30	-2093.86
4	GUIDE	931022960	8.95	17555	-0.042	0.027	0.081	0.133	109.733092	-31.864448	805.69	-1729.87
5	GUIDE	931160352	8.63	17583	-0.065	0.022	0.070	0.118	110.268138	-30.864891	-1397.66	1556.40
6	GUIDE	931018016	8.48	17497	-0.013	0.004	0.077	0.123	109.684535	-31.226562	-1231.27	-658.87
7	GUIDE	931163512	8.46	17583	0.065	0.026	0.090	0.139	110.894384	-31.299941	952.50	2368.08

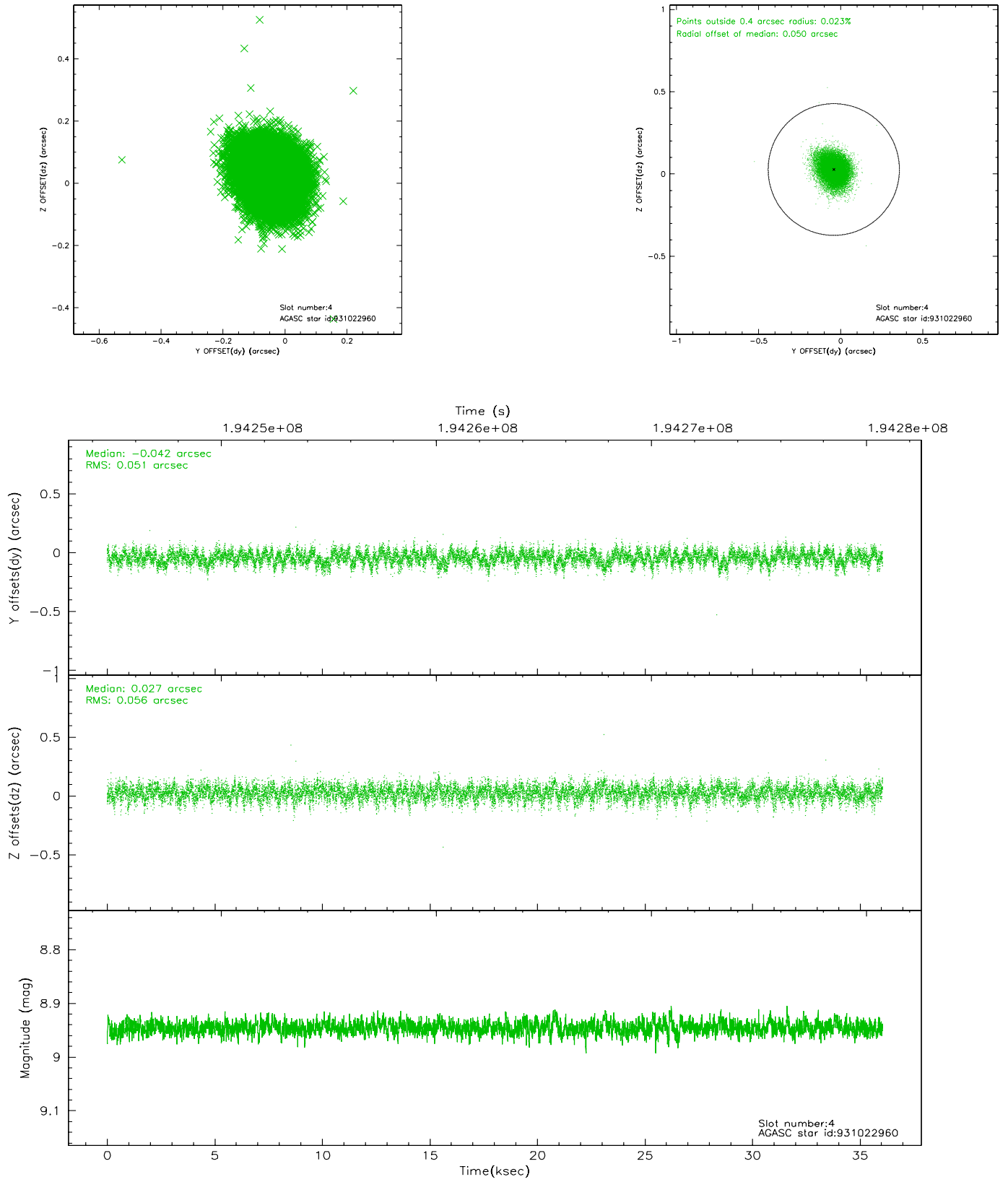


## 2.4 Star Slots

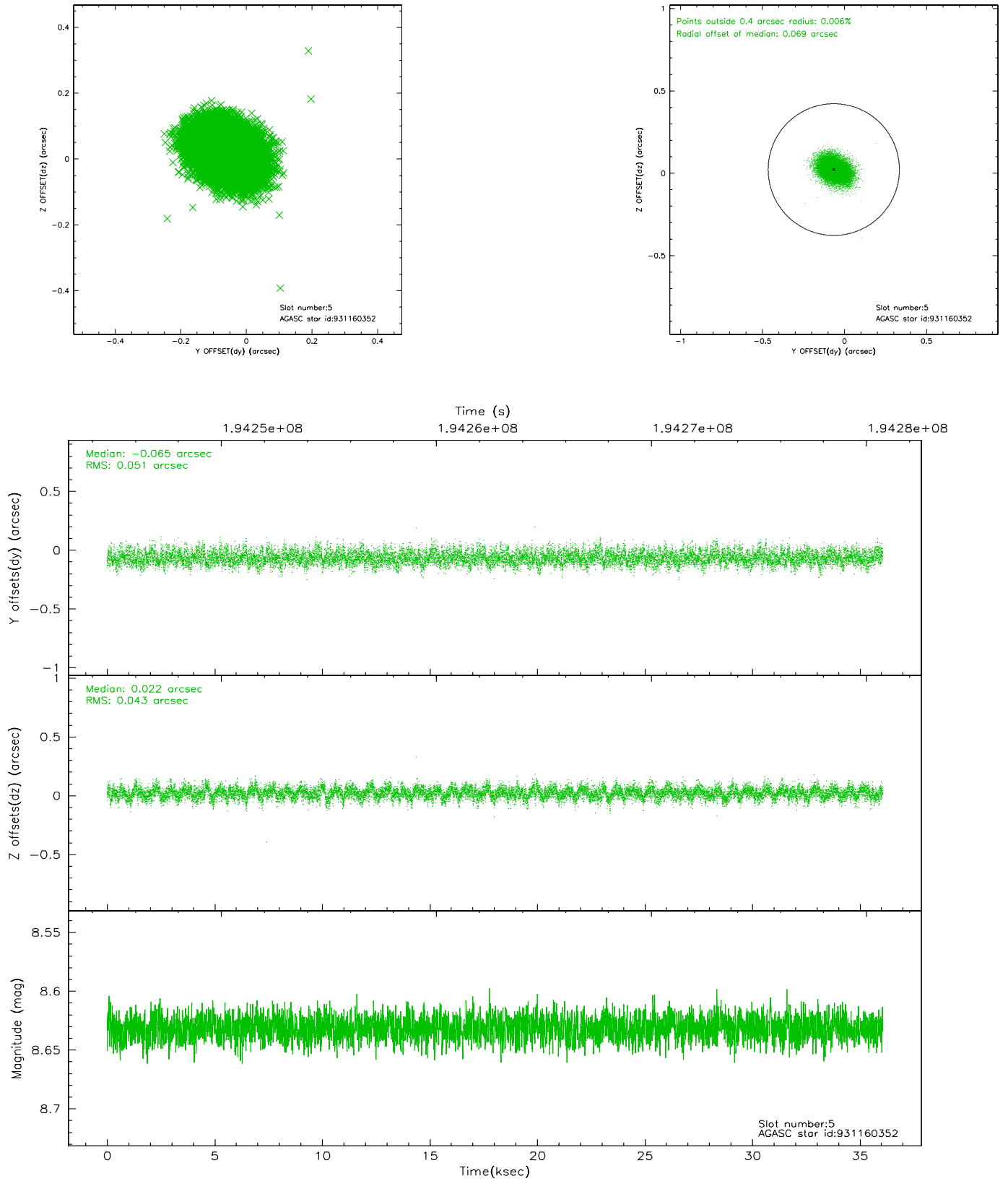
### 2.4.1 Slot 3



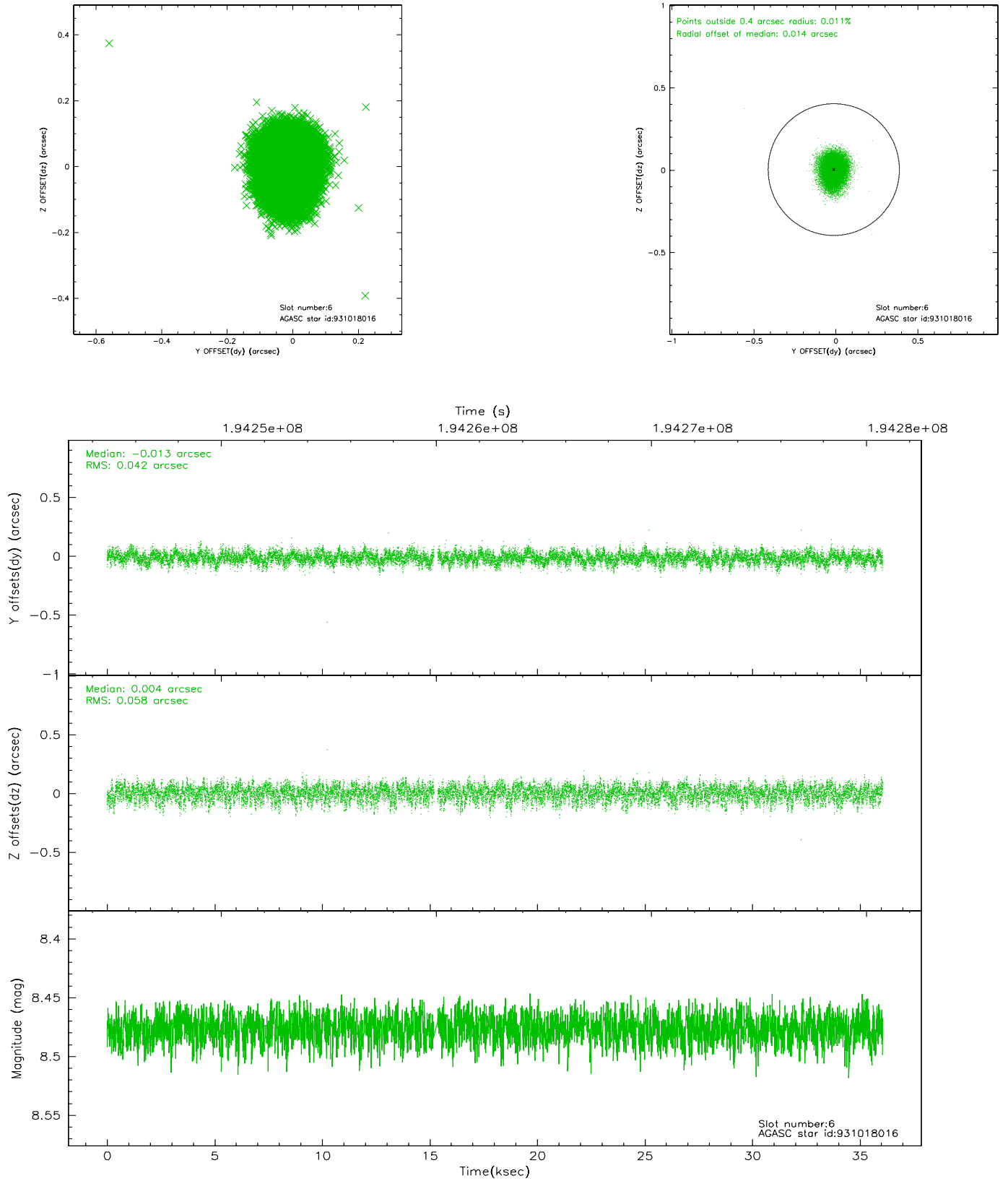
## 2.4.2 Slot 4



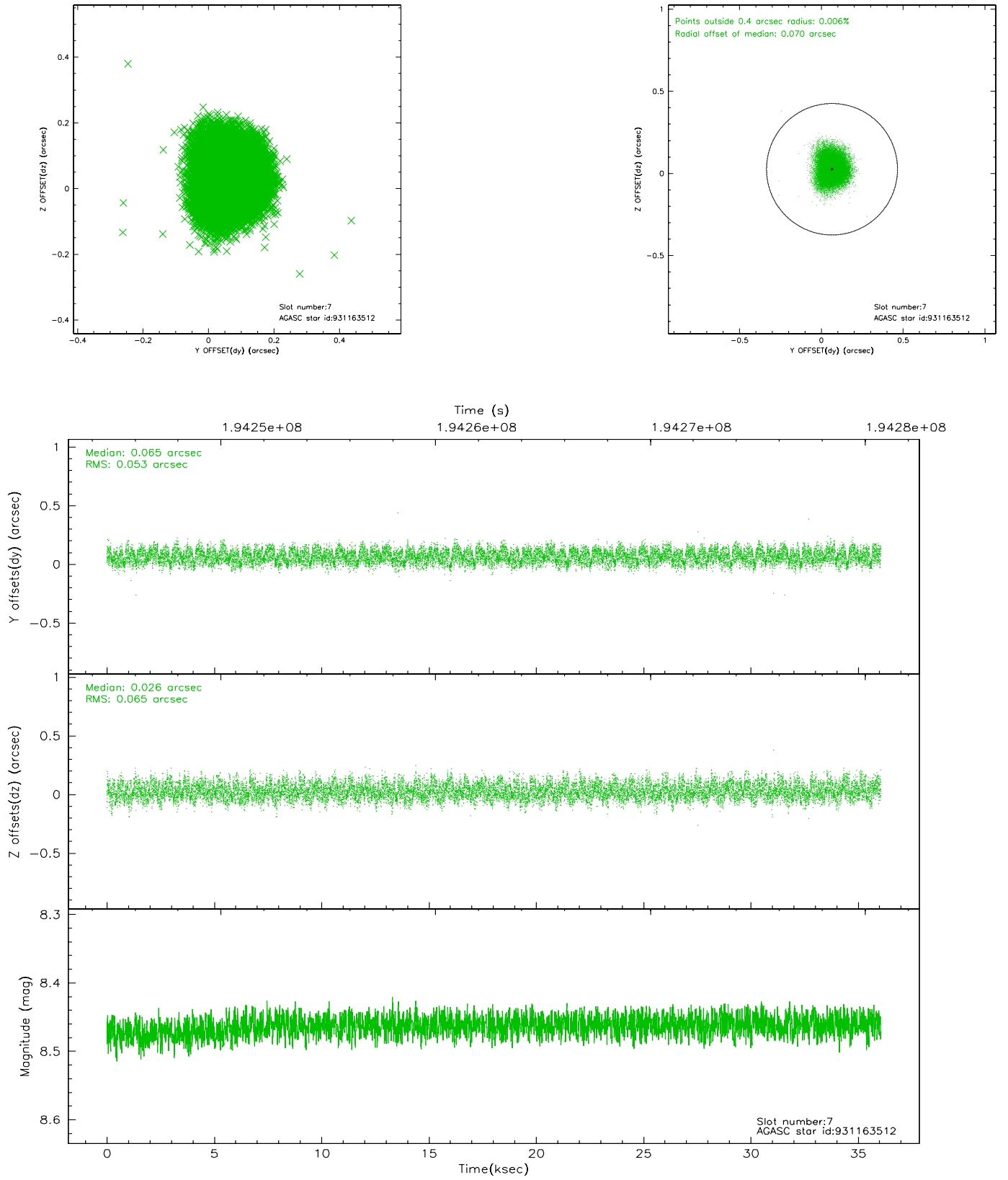
### 2.4.3 Slot 5



## 2.4.4 Slot 6

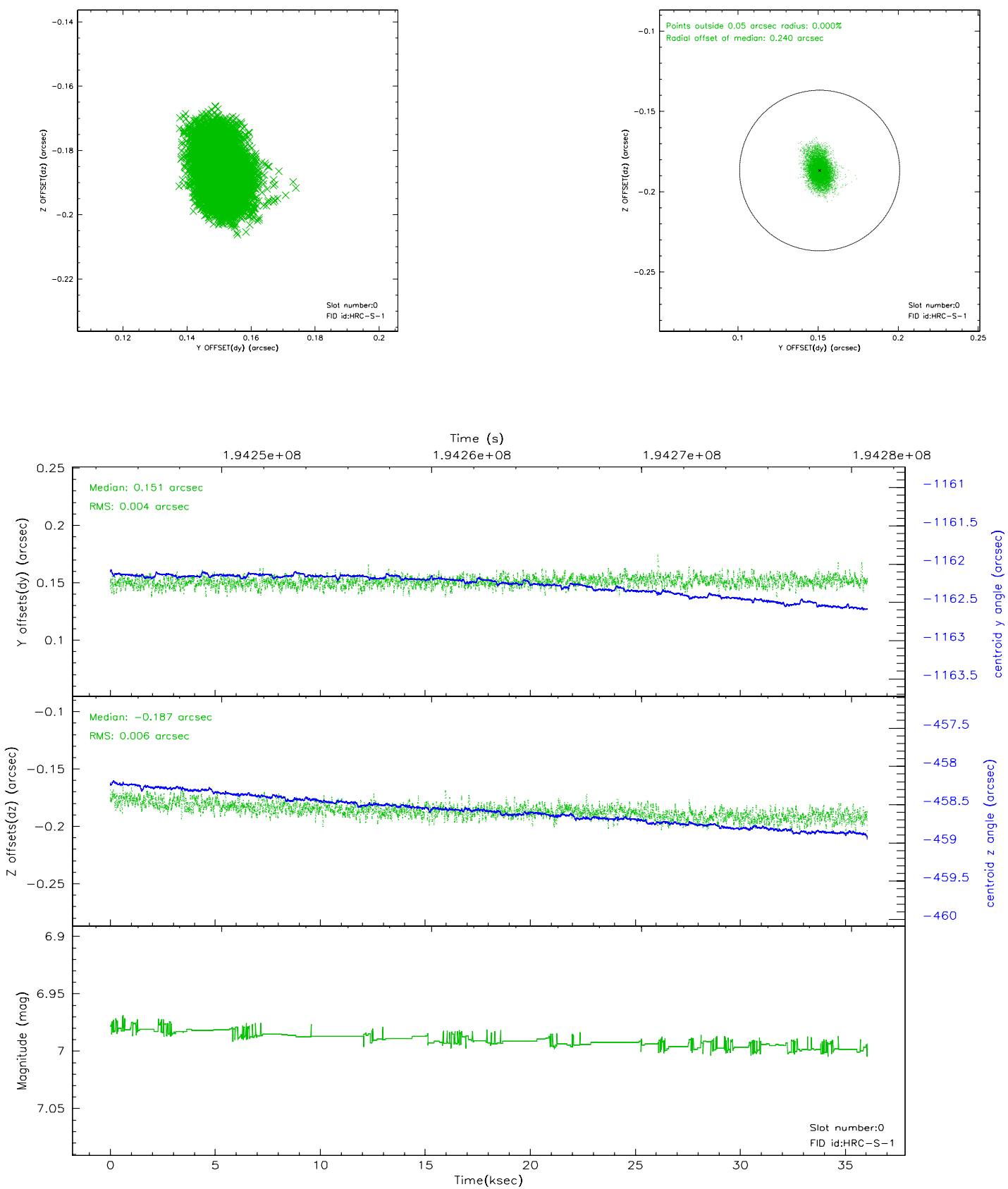


## 2.4.5 Slot 7

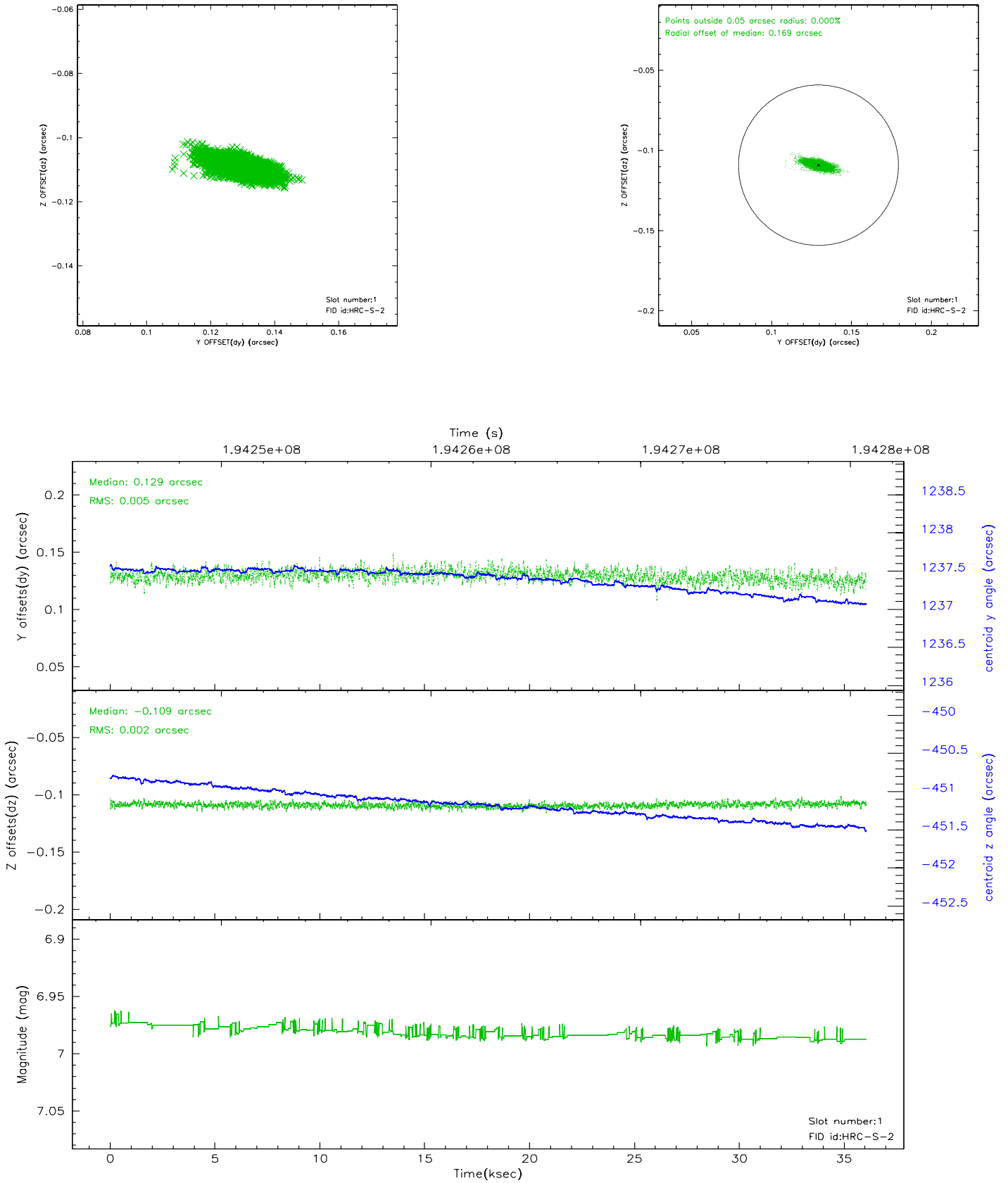


## 2.5 FID Slots

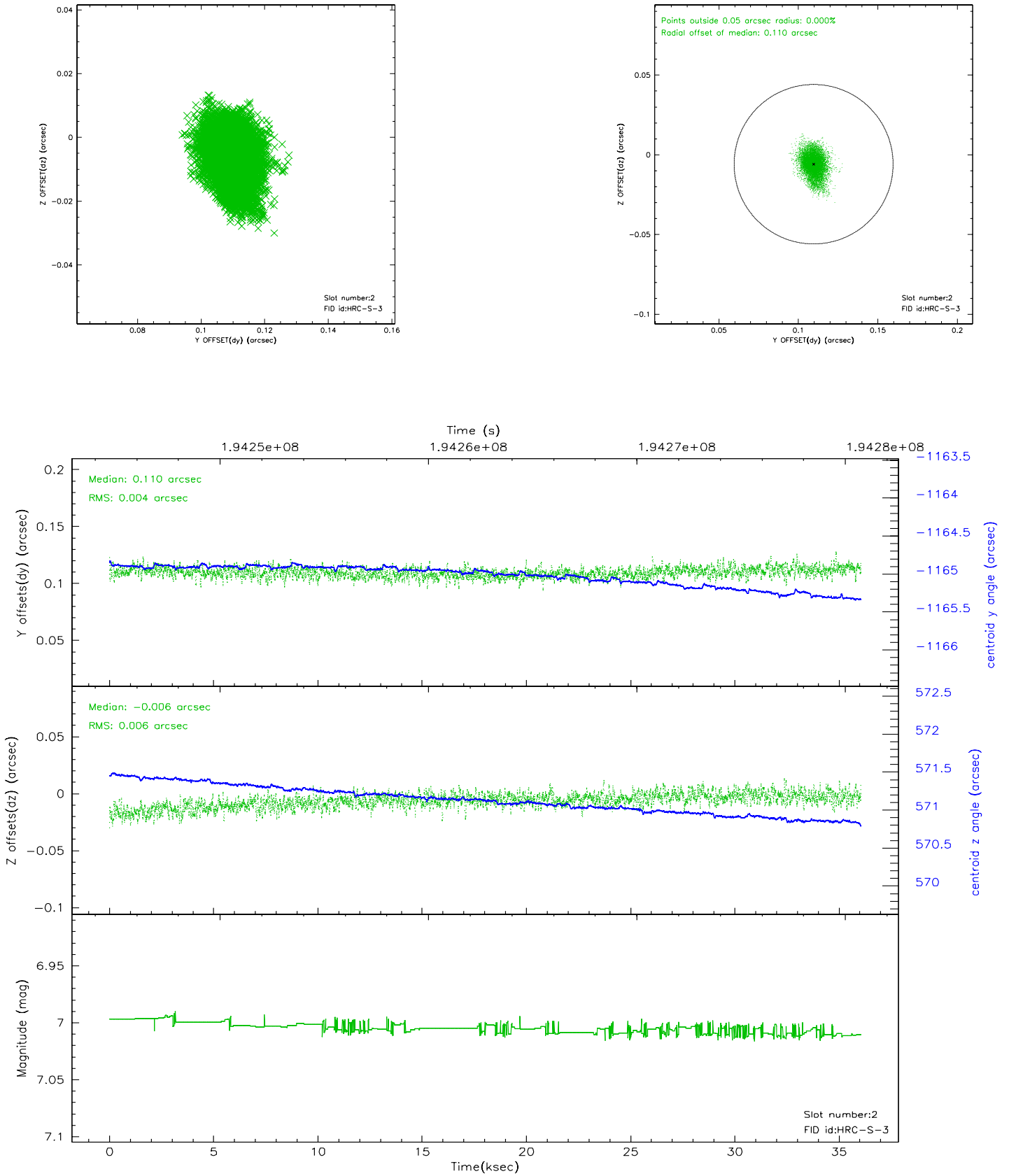
### 2.5.1 Slot 0



## 2.5.2 Slot 1



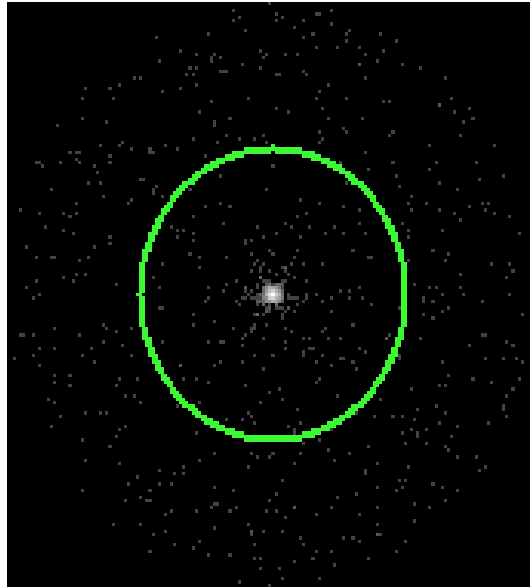
### 2.5.3 Slot 2



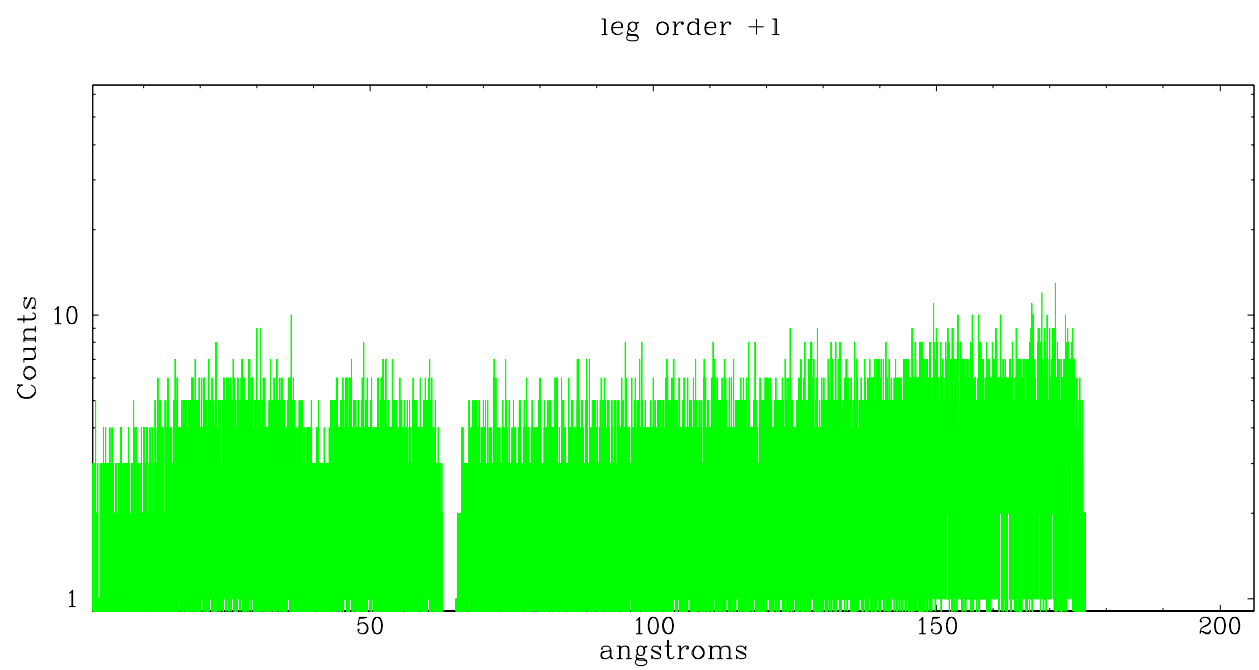
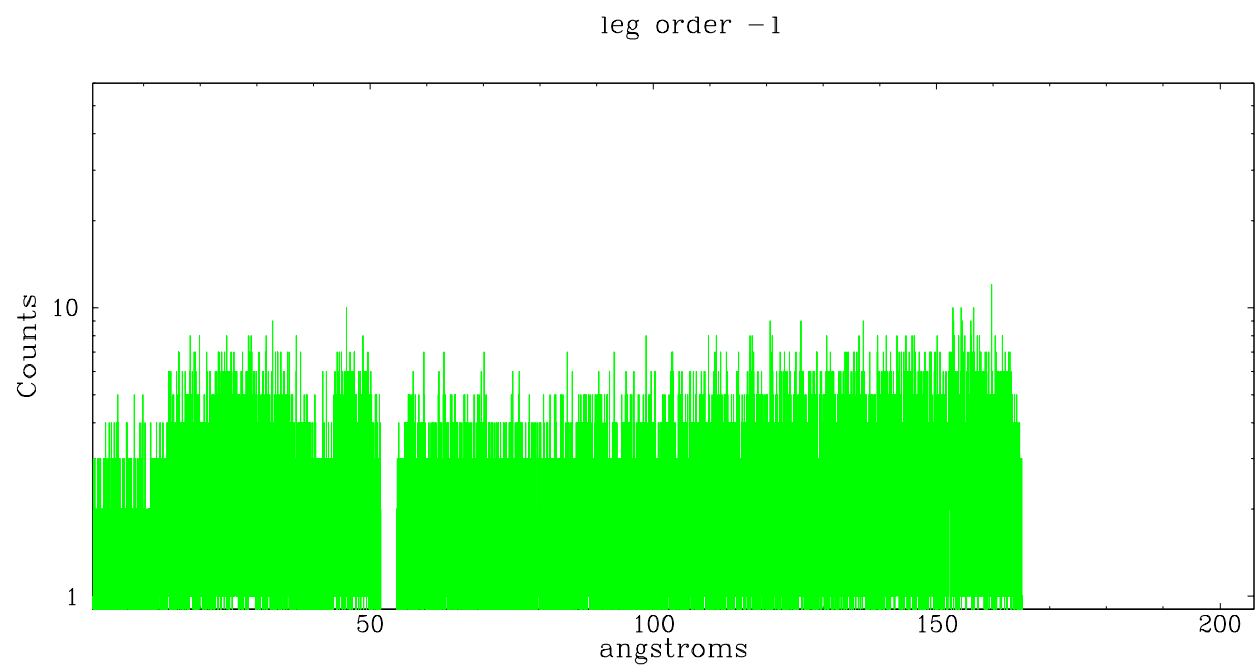


## 3 Gratings

### 3.1 LETG Arm



LETG Zero Order



# A Summary

## A.1 Status

V&V Scientist	Jen Lauer
V&V Date (YYYY-MM-DD)	2006.05.31
V&V Edition	1
V&V Disposition and Status	OK
V&V Charge Time	35.705

## A.2 Comments

The keywords DTCOR, EXPOSURE, and LIVETIME in the Level 2 event file and the

keyword DTCOR in the Level 1 event file have been incorrectly determined due to a software bug. The correct value of DTCOR can be found in the file DTFSTATS file that can be obtained by downloading the Secondary Data Products. In most cases, the difference between the correct DTCOR value and the incorrect DTCOR value in the Level 2 event file is very small and does not affect the data analysis. However, there are cases of significant differences and the user is advised to use the DTCOR in the DTFSTATS file for analysis. Corrected data products will be made available in the archive as soon as feasible.