

V&V Reference Report

L2 ASCDS Version : 7.6.7.2

Observation 4666 - L2 Version 3
Chandra X-Ray Center

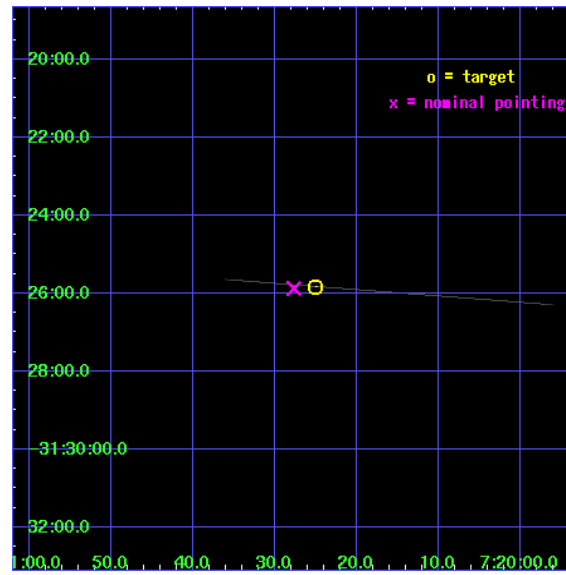
L2 Processing Date : Apr 10 2008

Contents

1	Front	2
2	OBI	3
2.1	OBI	3
2.1.1	Images	3
2.1.2	Bias	3
2.1.3	Parameters	4
2.1.4	Events	4
2.2	Compared Parameters	5
2.3	Aspect	6
2.4	Star Slots	9
2.4.1	Slot 3	9
2.4.2	Slot 4	10
2.4.3	Slot 5	11
2.4.4	Slot 6	12
2.4.5	Slot 7	13
2.5	FID Slots	14
2.5.1	Slot 0	14
2.5.2	Slot 1	15
2.5.3	Slot 2	16
A	Summary	17
A.1	Status	17
A.2	Comments	17

1 Front

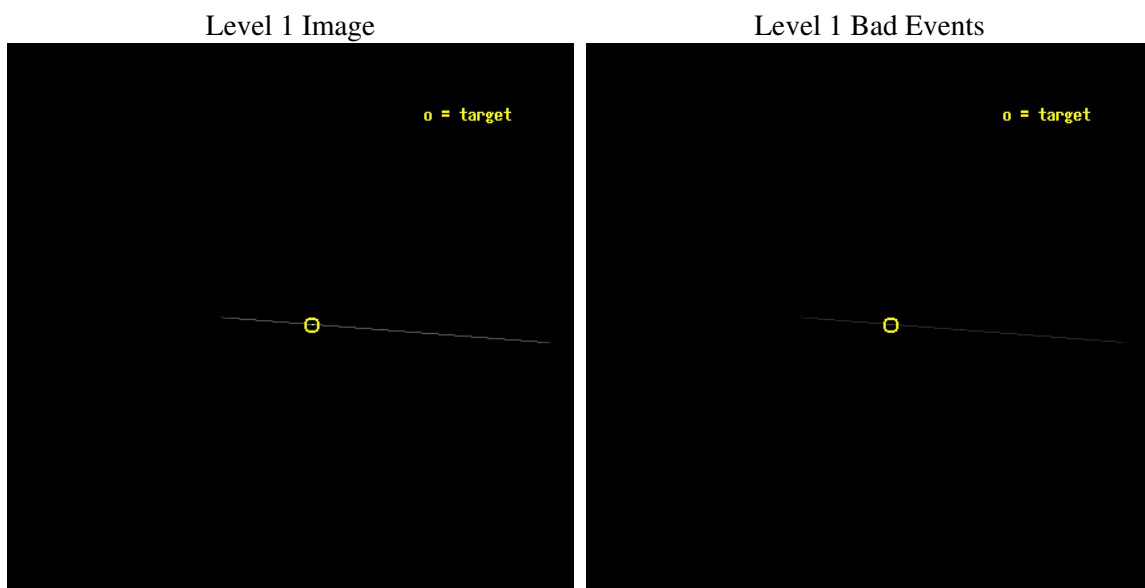
seq_num	500485
obs_id	4666
title	Timing the Enigmatic Nearby Neutron Star RX J0720.4-3125
observer	Dr David Kaplan
object	RX J0720.4-3125
ra_targ	110.104167
dec_targ	-31.430444
ra_nom	110.11542397035
dec_nom	-31.431381484238
roll_nom	4.3280318278402
revision	3
ontime	10121.25
livetime	10081.713867188
ontime7	10121.25
l2events	52256



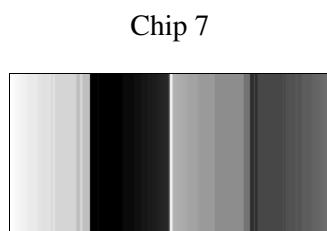
2 OBI

2.1 OBI

2.1.1 Images



2.1.2 Bias



2.1.3 Parameters

obi_num	0
ascdsver	7.6.11.6
caldbver	3.4.4
date	2008-04-10T22:17:25
revision	3

sched_exp_time	9941.337000
ontime	10121.25
ontime7	10121.25
l1events	64150

2.1.4 Events

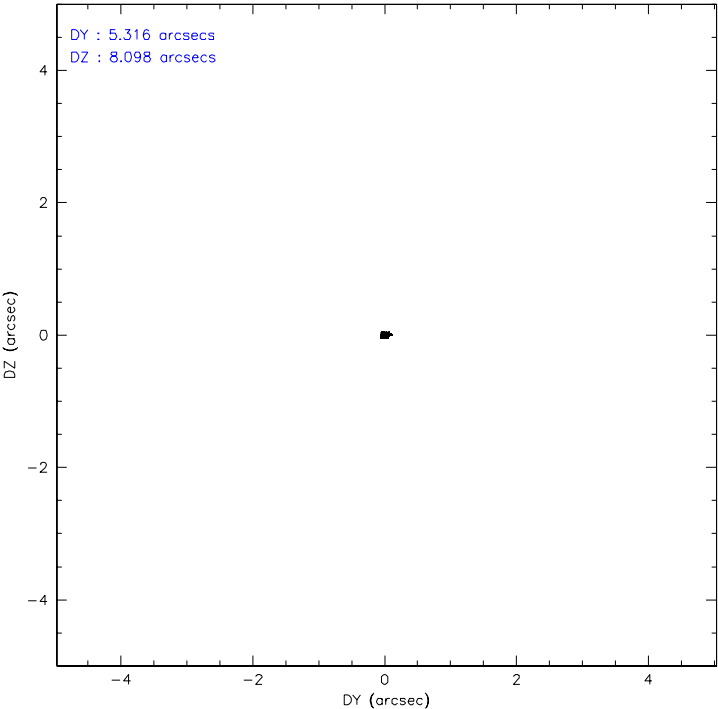
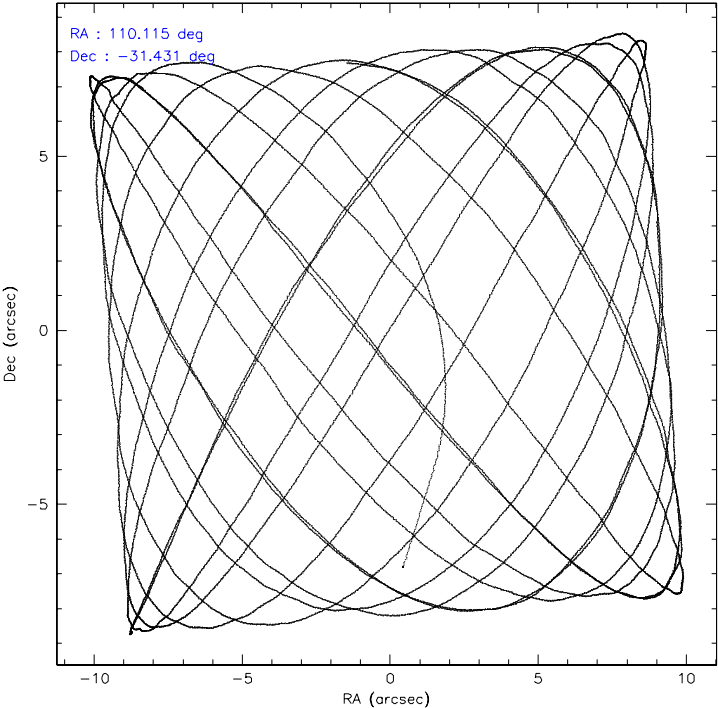
	ccd 7
level 1 events	64150
rejected events	10497
rejected %	16%

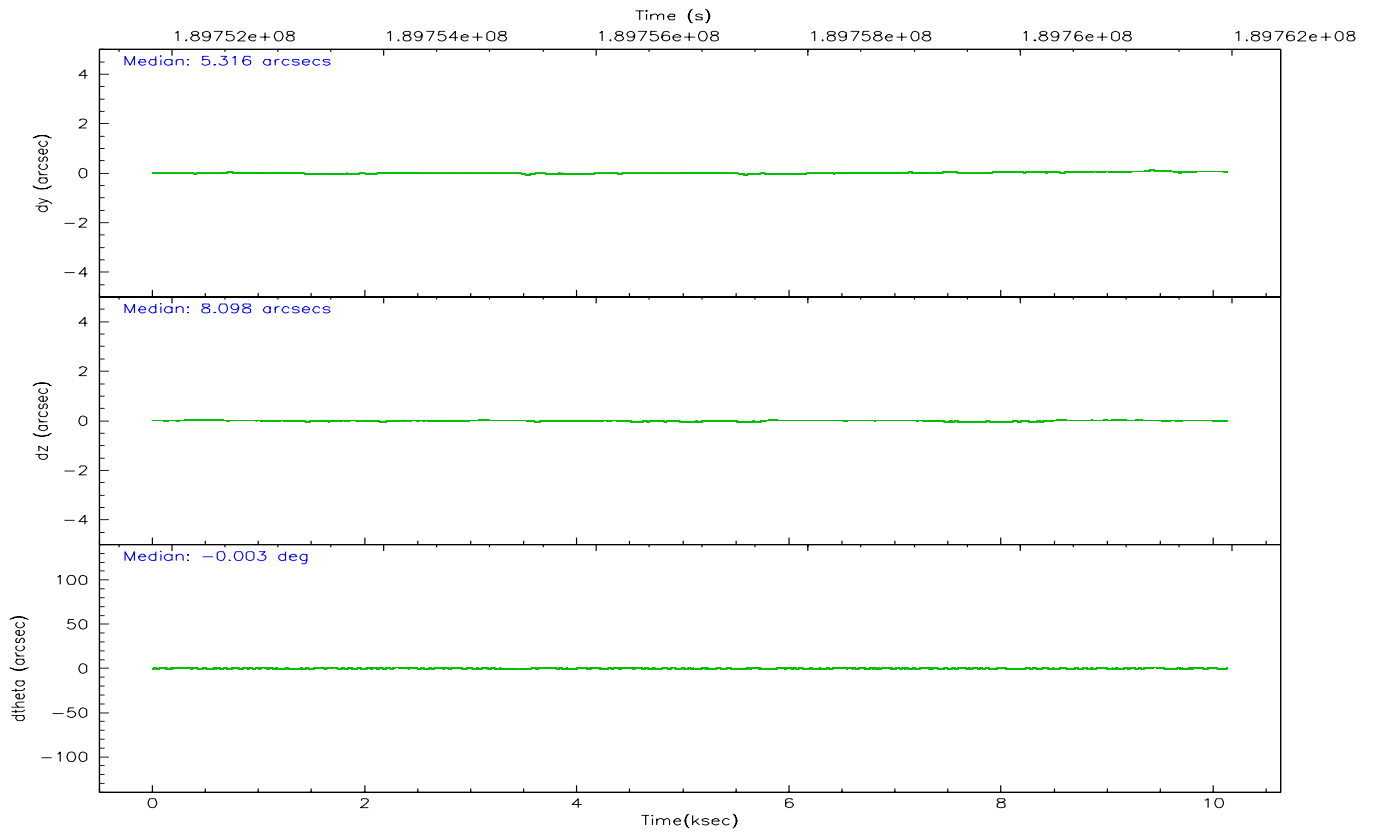
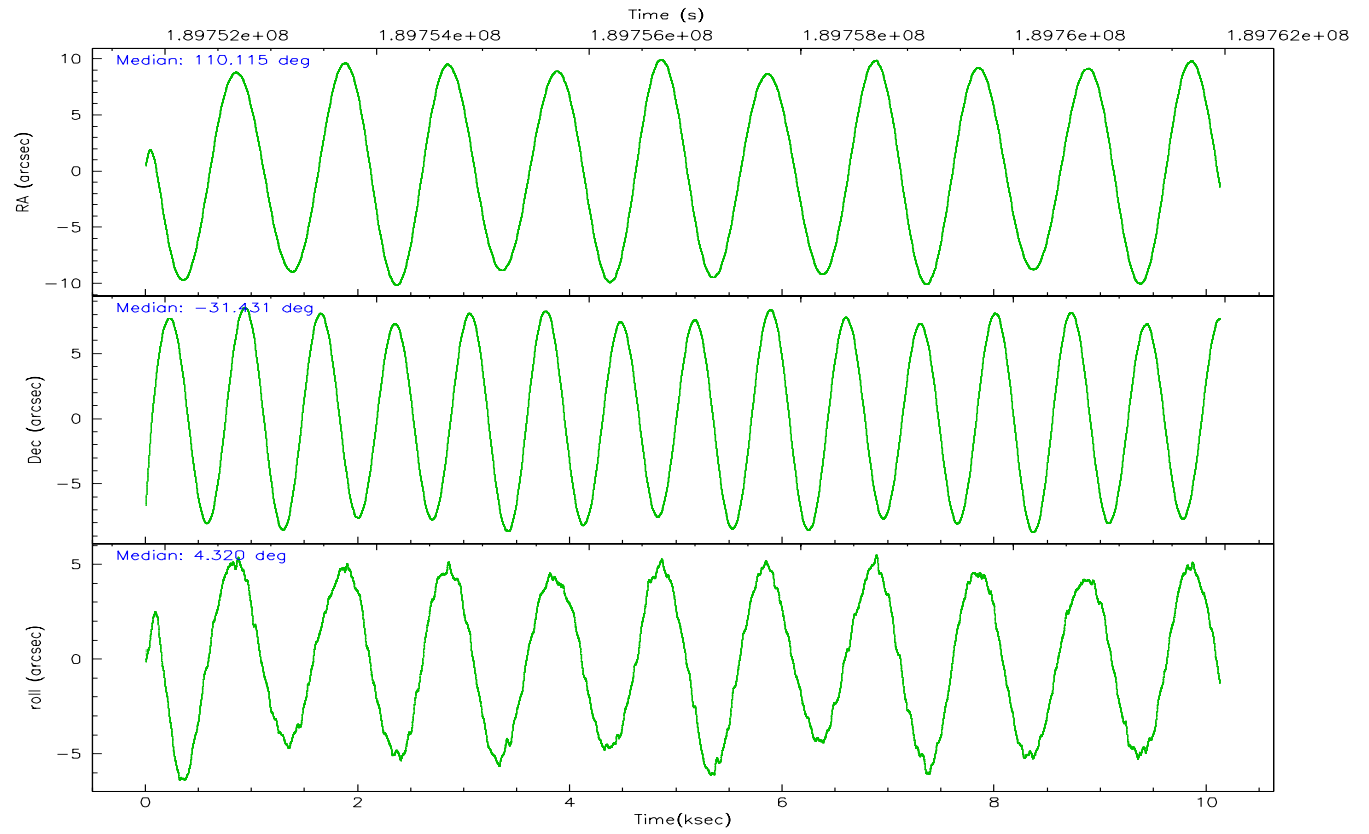
	ccd 7
grade 0 events	14912
	23%
grade 1 events	143
	0%
grade 2 events	13034
	20%
grade 3 events	4238
	6%
grade 4 events	4374
	6%
grade 5 events	7237
	11%
grade 6 events	20212
	31%
grade 7 events	0
	0%

2.2 Compared Parameters

Parameter	Planned	Actual	Parameter	Planned	Actual
Instrument	ACIS	ACIS	Obspar format version number	6	6
Detector	ACIS-7	ACIS-7	Obspar file type	PREDICTED	ACTUAL
Grating	NONE	NONE	Obspar update status	NONE	UPDATED
Data mode	CC33_FAINT	CC33_FAINT	On-chip summing requested	N	N
Observation mode	POINTING	POINTING	Subarray requested	NONE	NONE
Pointing RA	110.089327	110.1154239703515	Alternating exposures requested	N	N
Pointing Dec	-31.447075	-31.43138148423841	Primary exposure time	0.000000	0
Pointing Roll	4.157792	4.328031827840207			
SIM focus pos (mm)	-0.684267	-0.6828225247311905			
SIM defocus (mm)	0	0.001444936568705701			
SIM translation stage pos (mm)	-190.132523	-190.1400660498719			
SIM translation stage offset (mm)	0	0.00754346686406393			
Observation start time	189752014.184000	189750927.39246			
Observation start date	2004-01-06T04:52:30	2004-01-06T04:35:27			
Observation end time	189761955.184000	189763180.243			
Observation end date	2004-01-06T07:38:11	2004-01-06T07:59:40			
Read mode	CONTINUOUS	CONTINUOUS			

2.3 Aspect



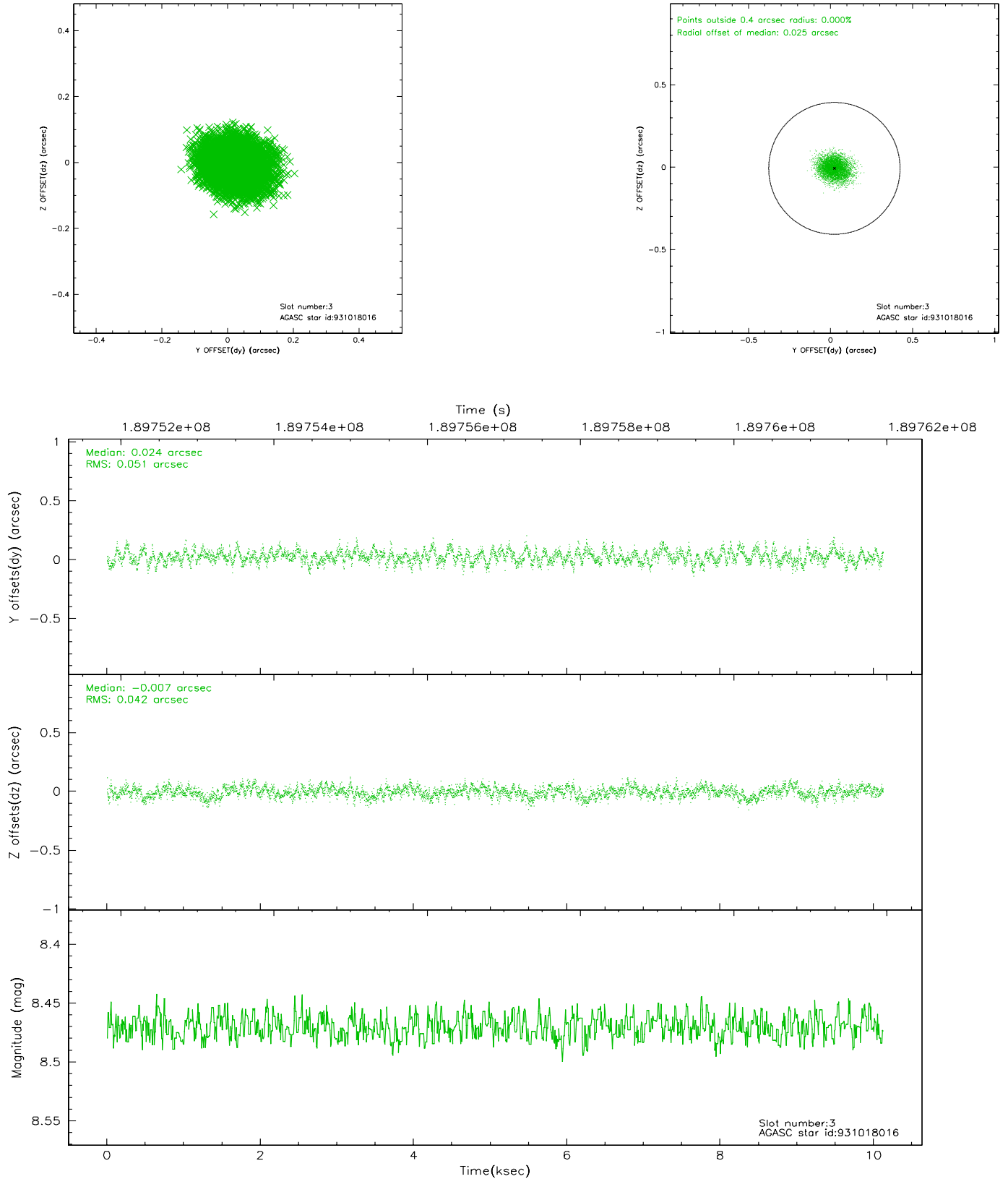


Slot Statistics

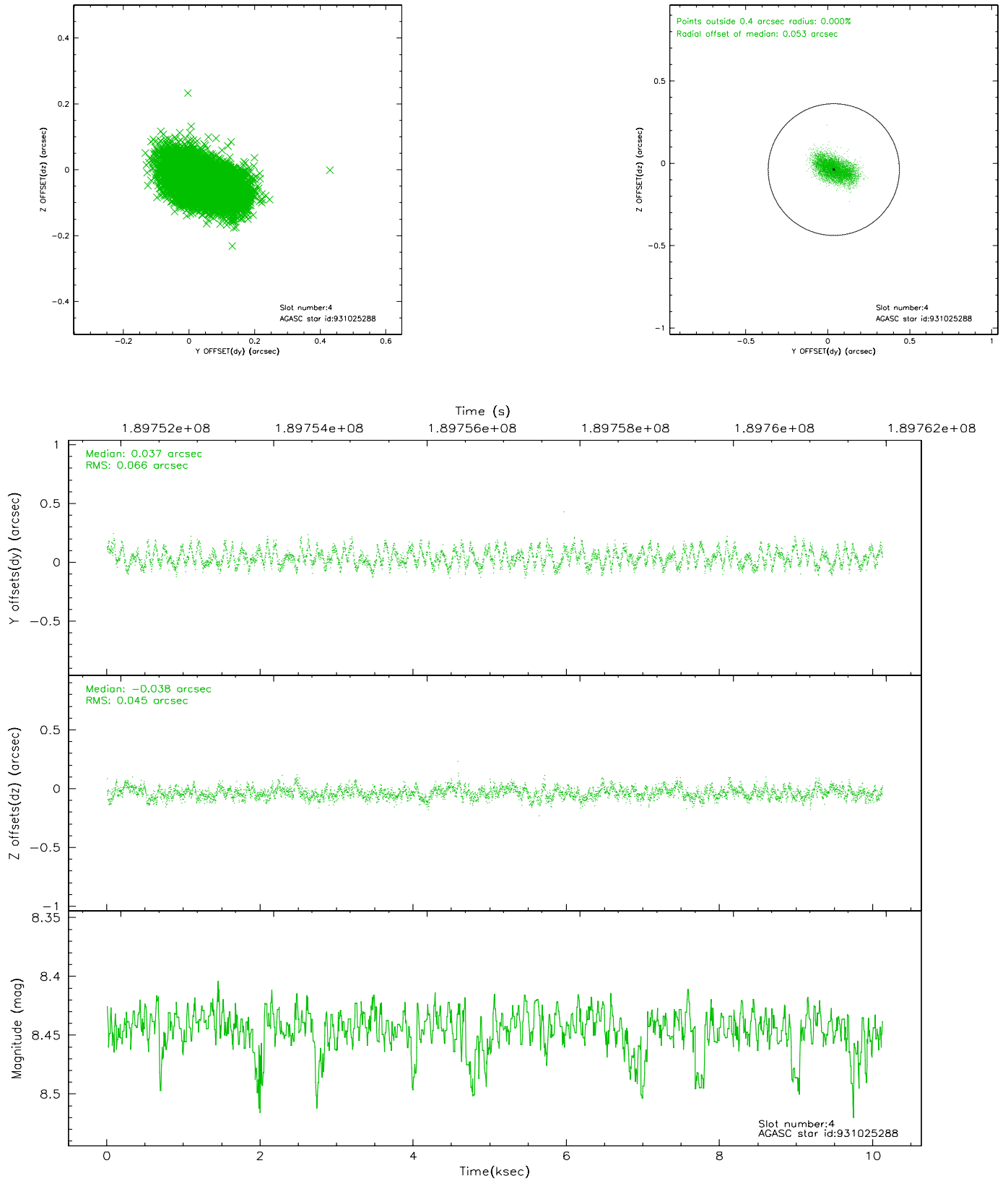
slot	status	id	mag	n_pts	med_dy	med_dz	dr1	dr2	ra	dec	mean_y	mean_z
0	FID	ACIS-S-2	7.11	2470	-0.024	-0.032	0.007	0.011	0.000000	0.000000	-758.07	-1729.31
1	FID	ACIS-S-4	7.21	2470	0.054	0.021	0.005	0.009	0.000000	0.000000	2155.07	178.65
2	FID	ACIS-S-5	7.23	2469	-0.060	0.020	0.007	0.010	0.000000	0.000000	-1810.26	172.96
3	GUIDE	931018016	8.47	4941	0.024	-0.007	0.071	0.114	109.684535	-31.226562	-1185.39	879.71
4	GUIDE	931025288	8.44	4939	0.037	-0.038	0.086	0.139	109.511084	-30.937793	-1648.54	1953.42
5	GUIDE	931160352	8.62	4938	-0.086	-0.057	0.093	0.141	110.268138	-30.864891	702.51	2050.45
6	GUIDE	931695048	7.39	4940	-0.009	0.033	0.100	0.151	110.648539	-32.046020	1545.98	-2277.91
7	GUIDE	931019296	8.66	4938	0.038	0.067	0.060	0.094	109.471771	-31.694370	-1951.08	-756.91

2.4 Star Slots

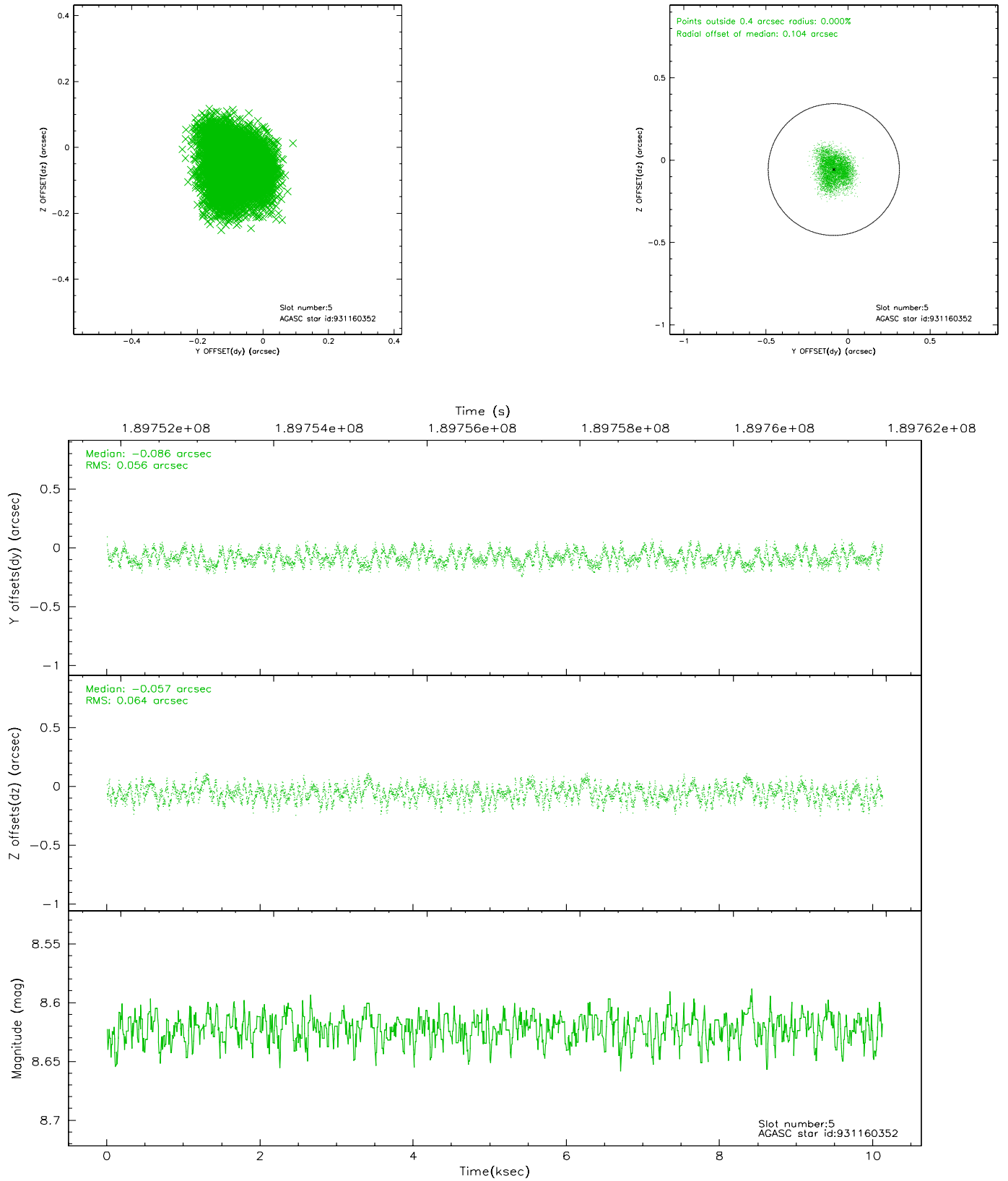
2.4.1 Slot 3



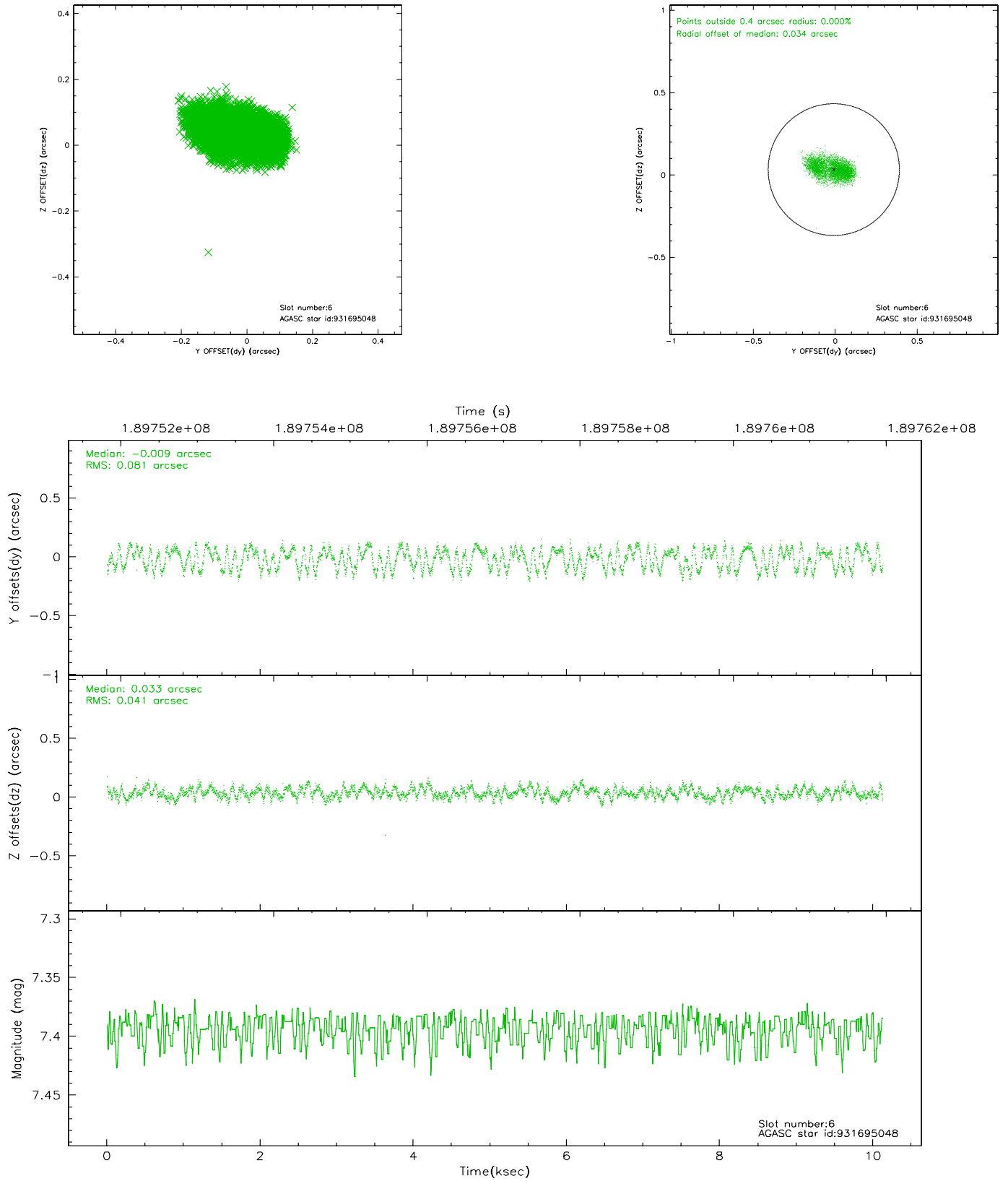
2.4.2 Slot 4



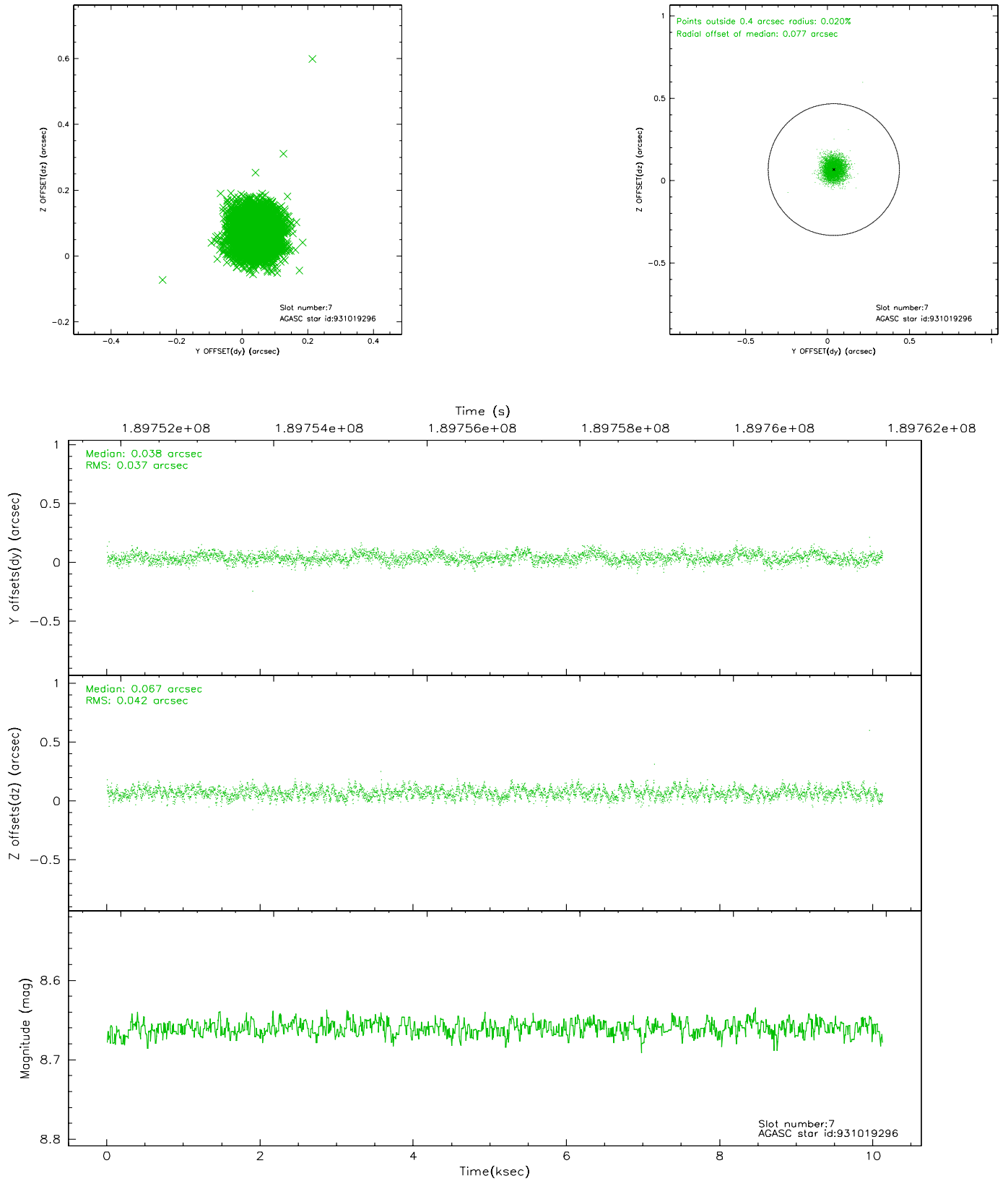
2.4.3 Slot 5



2.4.4 Slot 6

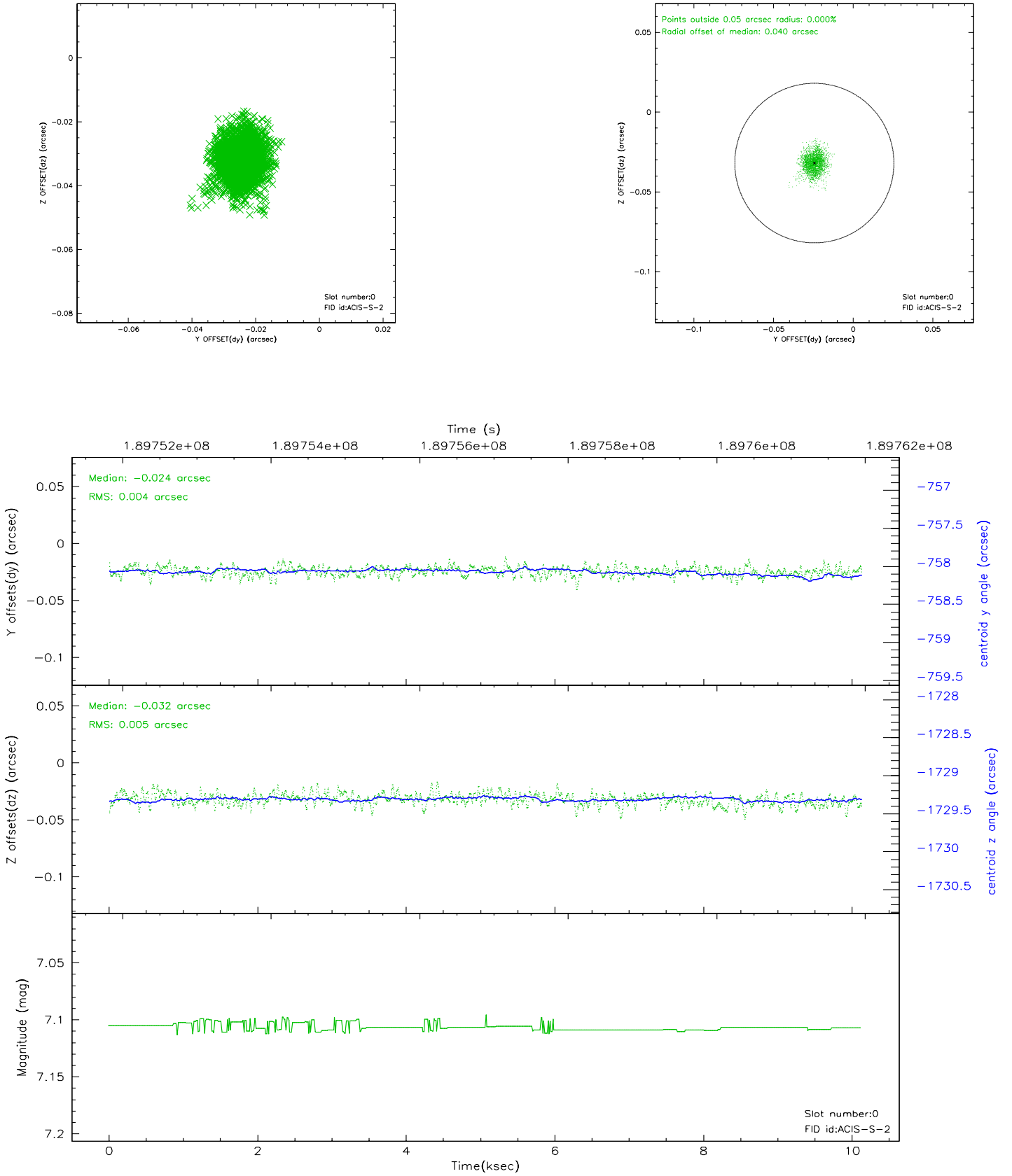


2.4.5 Slot 7

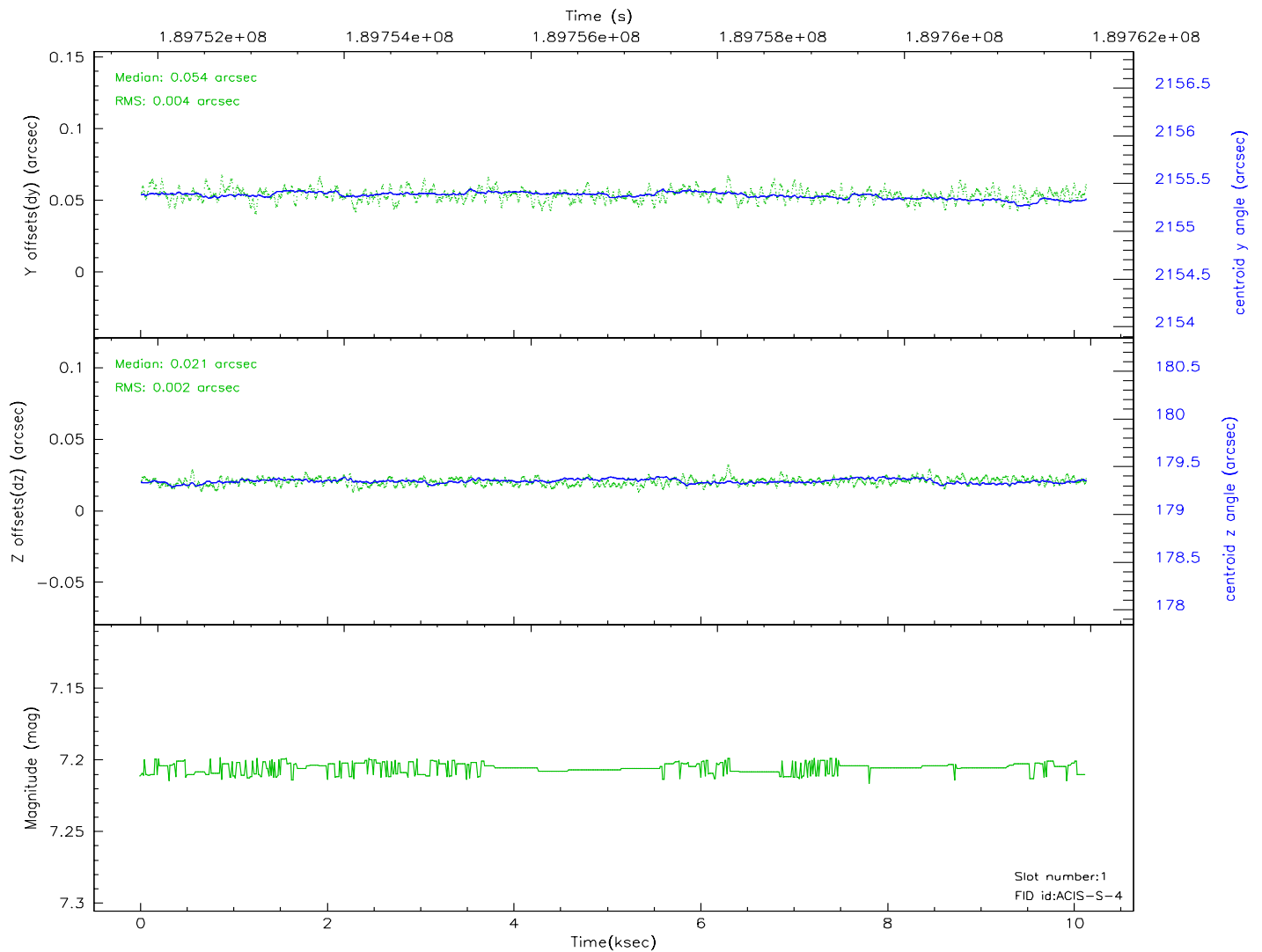
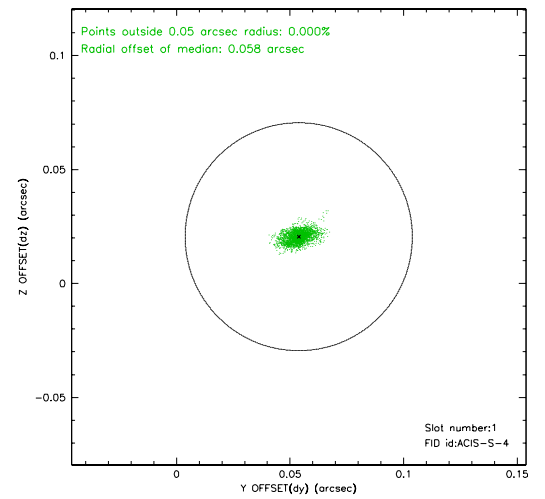
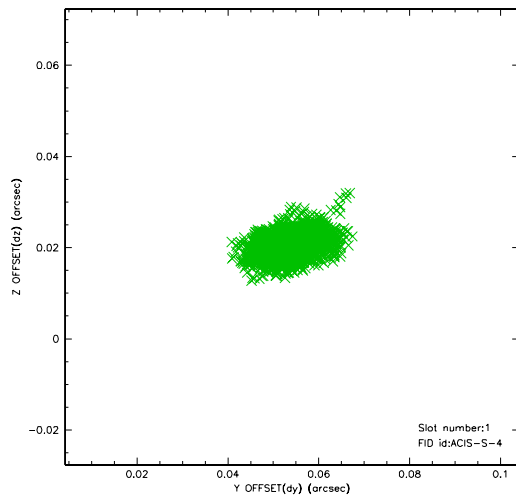


2.5 FID Slots

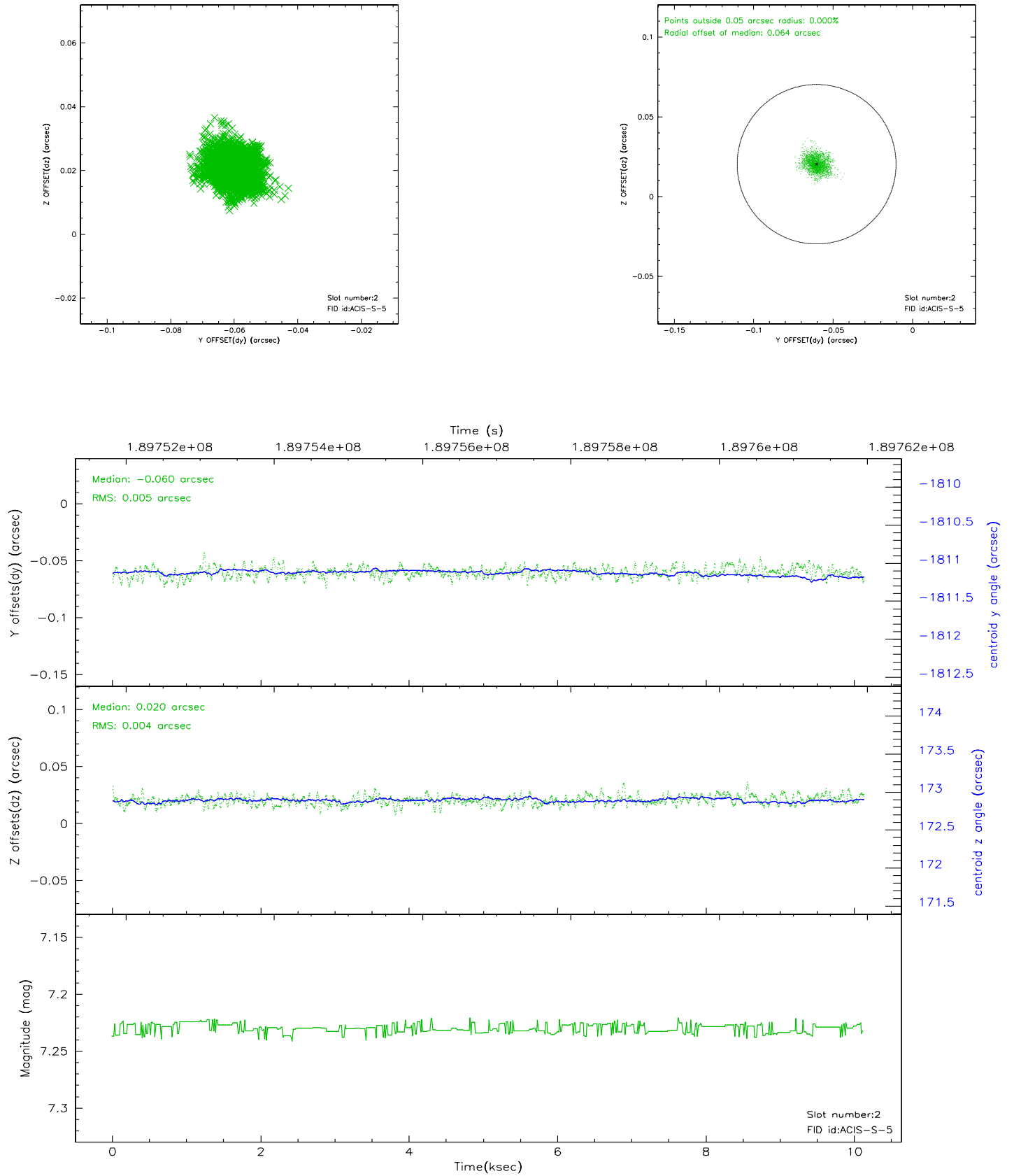
2.5.1 Slot 0



2.5.2 Slot 1



2.5.3 Slot 2



A Summary

A.1 Status

V&V Scientist	Beth Sundheim
V&V Date (YYYY-MM-DD)	2008.04.14
V&V Edition	1
V&V Disposition and Status	OK
V&V Charge Time	10.124

A.2 Comments