

V&V Reference Report

L2 ASCDS Version : 8.5

Observation 4665 - L2 Version 3
Chandra X-Ray Center

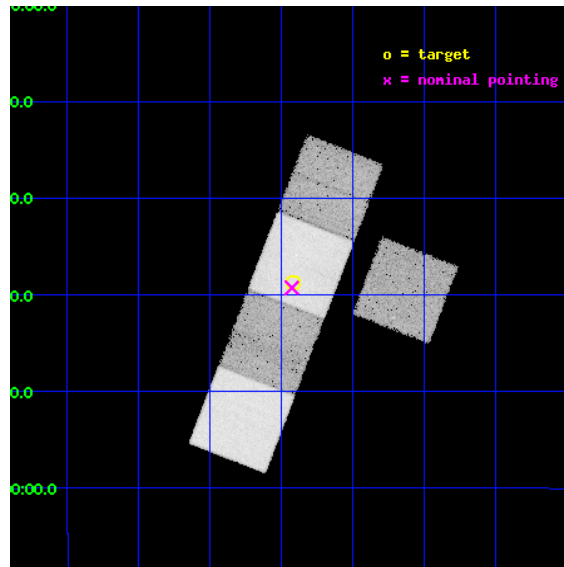
L2 Processing Date : Dec 9 2012

Contents

1	Front	2
2	OBI	3
2.1	OBI	3
2.1.1	Images	3
2.1.2	Bias	3
2.1.3	Parameters	4
2.1.4	Events	4
2.2	Compared Parameters	5
2.3	Aspect	6
2.4	Star Slots	9
2.4.1	Slot 3	9
2.4.2	Slot 4	10
2.4.3	Slot 5	11
2.4.4	Slot 6	12
2.4.5	Slot 7	13
2.5	FID Slots	14
2.5.1	Slot 0	14
2.5.2	Slot 1	15
2.5.3	Slot 2	16
A	Summary	17
A.1	Status	17
A.2	Comments	17

1 Front

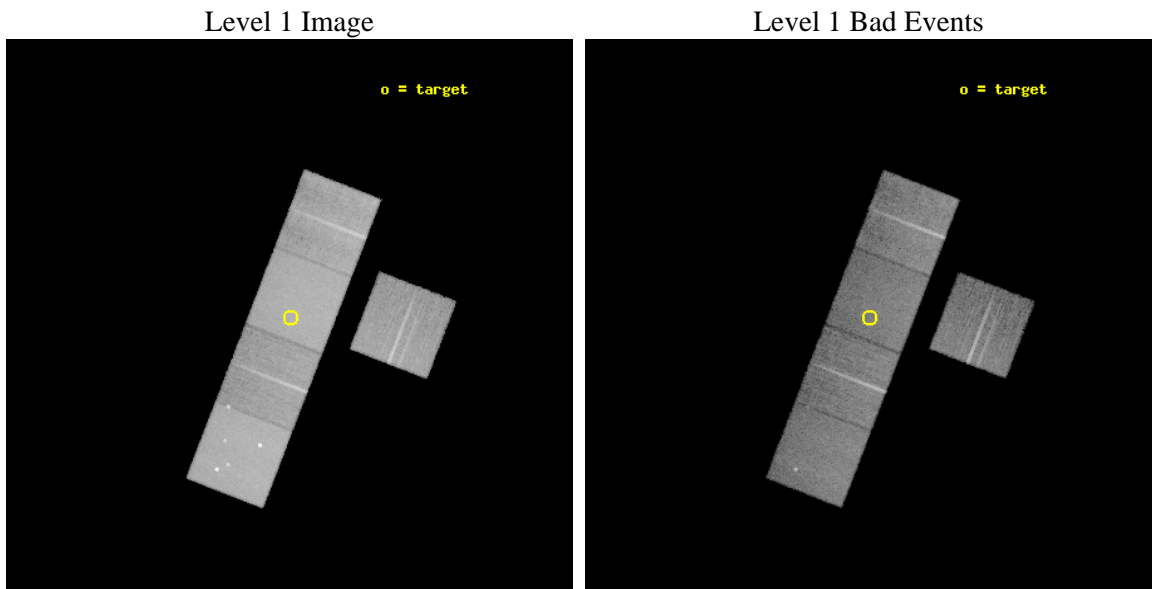
seq_num	500484	Sequence number
obs_id	4665	Observation id
title	The Energetics and Host Galaxies of X-Ray Flashes	Proposal title
observer	Prof. Derek Fox	Principal investigator
object	XRF040916	Source name
dtcycle	0	
cycle	P	events from which exps? Prim/Second/Both
ra_targ	345.229583	Observer's specified target RA [deg]
dec_targ	-5.645278	Observer's specified target Dec [deg]
ra_nom	345.23145952132	Nominal RA [deg]
dec_nom	-5.6547709391446	Nominal Dec [deg]
roll_nom	291.16587893523	Nominal Roll [deg]
revision	3	Processing version of data
ontime	18984.399963468	Sum of GTIs [s]
livetime	18736.354801834	Livetime [s]
ontime3	18981.258963346	Sum of GTIs [s]
ontime5	18984.399963468	Sum of GTIs [s]
ontime6	18984.399963468	Sum of GTIs [s]
ontime7	18984.399963468	Sum of GTIs [s]
ontime8	18981.258963317	Sum of GTIs [s]
l2events	290953	Number of level 2 events



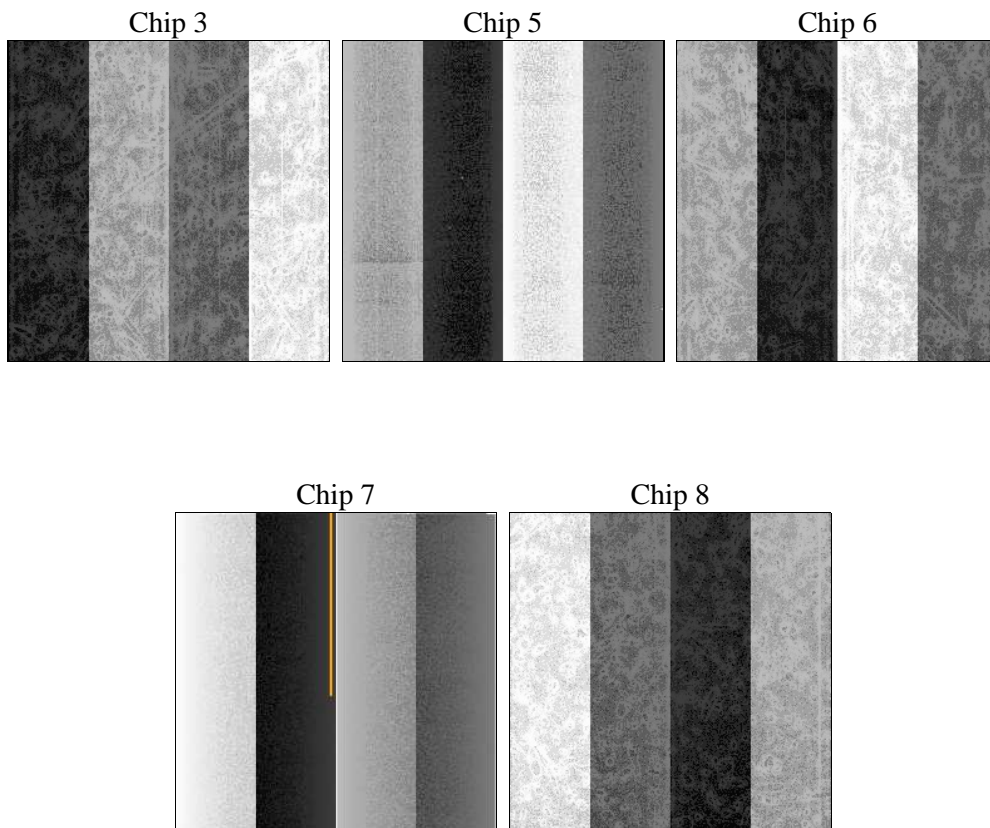
2 OBI

2.1 OBI

2.1.1 Images



2.1.2 Bias



2.1.3 Parameters

obi_num	0	Obi number	sched_exp_time	18843.752000	[s] Scheduled observation exposure time
ascdsver	8.5	Processing system revision	ontime	18984.399963468	Sum of GTIs [s]
caldsver	4.5.4	 	ontime3	18981.258963346	Sum of GTIs [s]
date	2012-12-09T07:11:08	Date and time of file creation	ontime5	18984.399963468	Sum of GTIs [s]
revision	3	Processing version of data	ontime6	18984.399963468	Sum of GTIs [s]
			ontime7	18984.399963468	Sum of GTIs [s]
			ontime8	18981.258963317	Sum of GTIs [s]
			l1events	983474	Number of level 1 events

2.1.4 Events

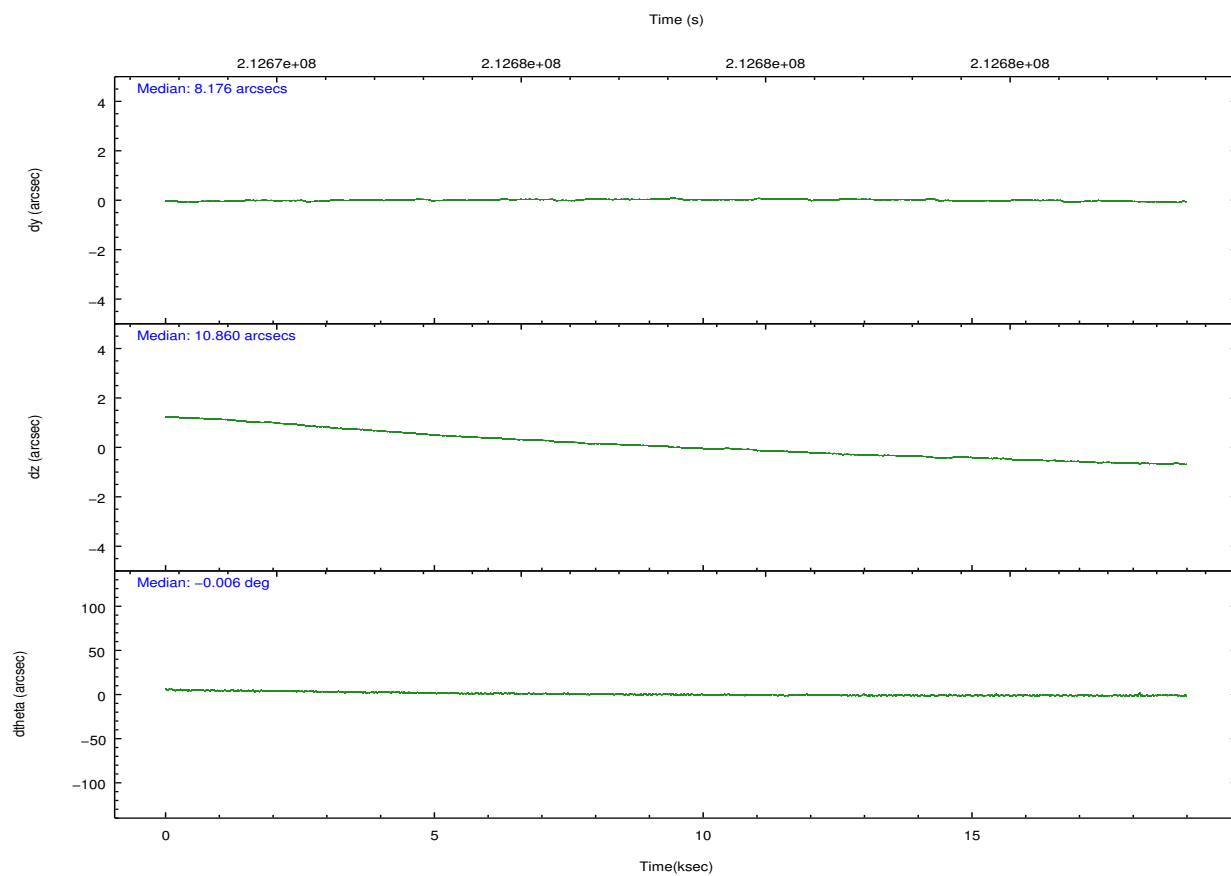
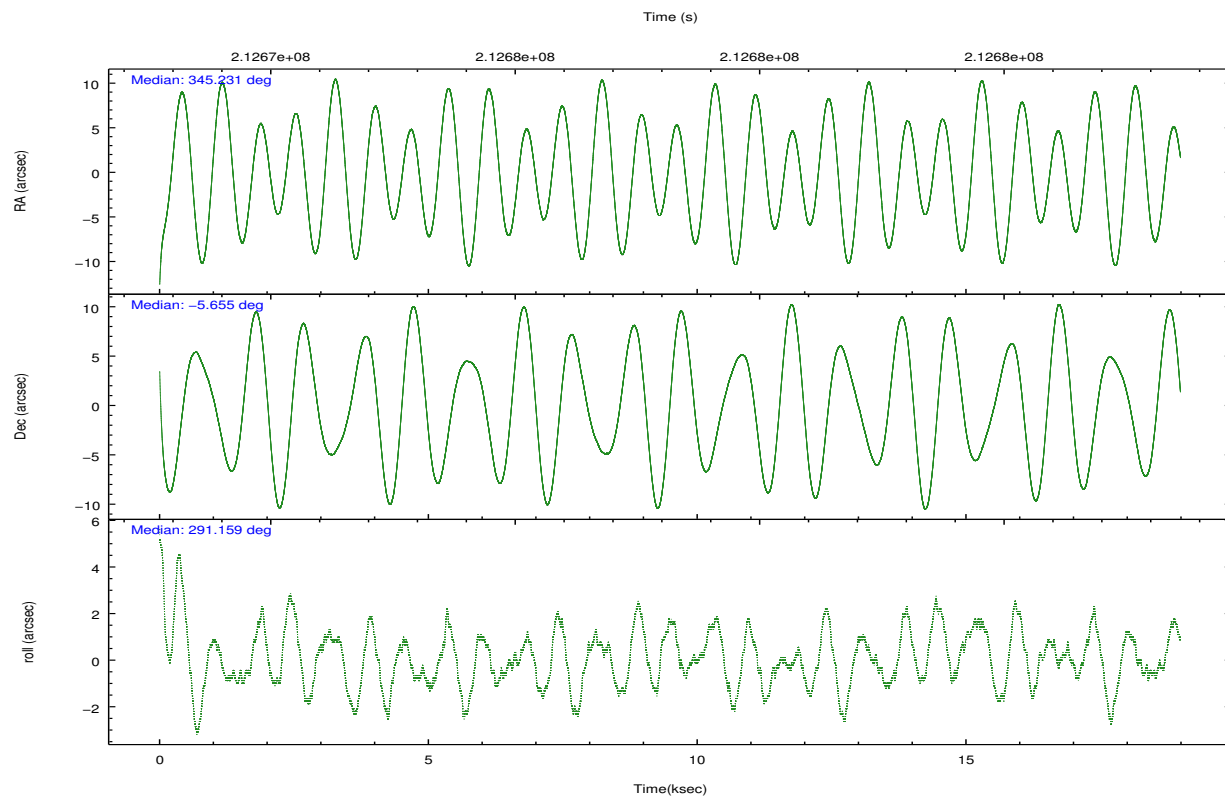
	ccd 3	ccd 5	ccd 6	ccd 7	ccd 8
level 1 events	147596	258931	153653	230930	192364
rejected events	126933	126641	130622	119235	148021
rejected %	86%	48%	85%	51%	76%

	ccd 3	ccd 5	ccd 6	ccd 7	ccd 8
grade 0 events	10817	18842	11942	10535	17026
	7%	7%	7%	4%	8%
grade 1 events	97	420	89	198	152
	0%	0%	0%	0%	0%
grade 2 events	3597	39338	4295	21392	9409
	2%	15%	2%	9%	4%
grade 3 events	1824	5813	1814	9501	4203
	1%	2%	1%	4%	2%
grade 4 events	1717	5436	1814	9422	3969
	1%	2%	1%	4%	2%
grade 5 events	6537	16802	6752	19095	8868
	4%	6%	4%	8%	4%
grade 6 events	3096	65378	3578	62791	10468
	2%	25%	2%	27%	5%
grade 7 events	119911	106902	123369	97996	138269
	81%	41%	80%	42%	71%

2.2 Compared Parameters

Parameter	Planned	Actual	Parameter	Planned	Actual
Instrument	ACIS	ACIS	Obspar format version number	7	7
Detector	ACIS-35678	ACIS-35678	Obspar file type	PREDICTED	ACTUAL
Grating	NONE	NONE	Obspar update status	NONE	UPDATED
Data mode	VFAINT	VFAINT	Number of optional ACIS chips dropped	0	0
Observation mode	POINTING	POINTING	On-chip summing requested	N	N
[deg] Pointing RA	345.209905	345.2314595213161	Subarray requested	NONE	NONE
[deg] Pointing Dec	-5.637986	-5.654770939144595	Alternating exposures requested	N	N
[deg] Pointing Roll	291.007122	291.1658789352318	[s] Primary exposure time	0.000000	3.1
[mm] SIM focus pos	-0.684267	-0.6828225247311905			
[mm] SIM defocus	0	0.001444936568705701			
[mm] SIM translation stage pos	-190.132523	-190.1425803651734			
[mm] SIM translation stage offset	0	0.01005778216563158			
[s] Observation start time (MET)	212668818.184000	212667608.3165			
Observation start date	2004-09-27T10:39:14	2004-09-27T10:20:08			
[s] Observation end time (MET)	212687662.184000	212687888.96741			
Observation end date	2004-09-27T15:53:18	2004-09-27T15:58:08			
Read mode	TIMED	TIMED			

2.3 Aspect

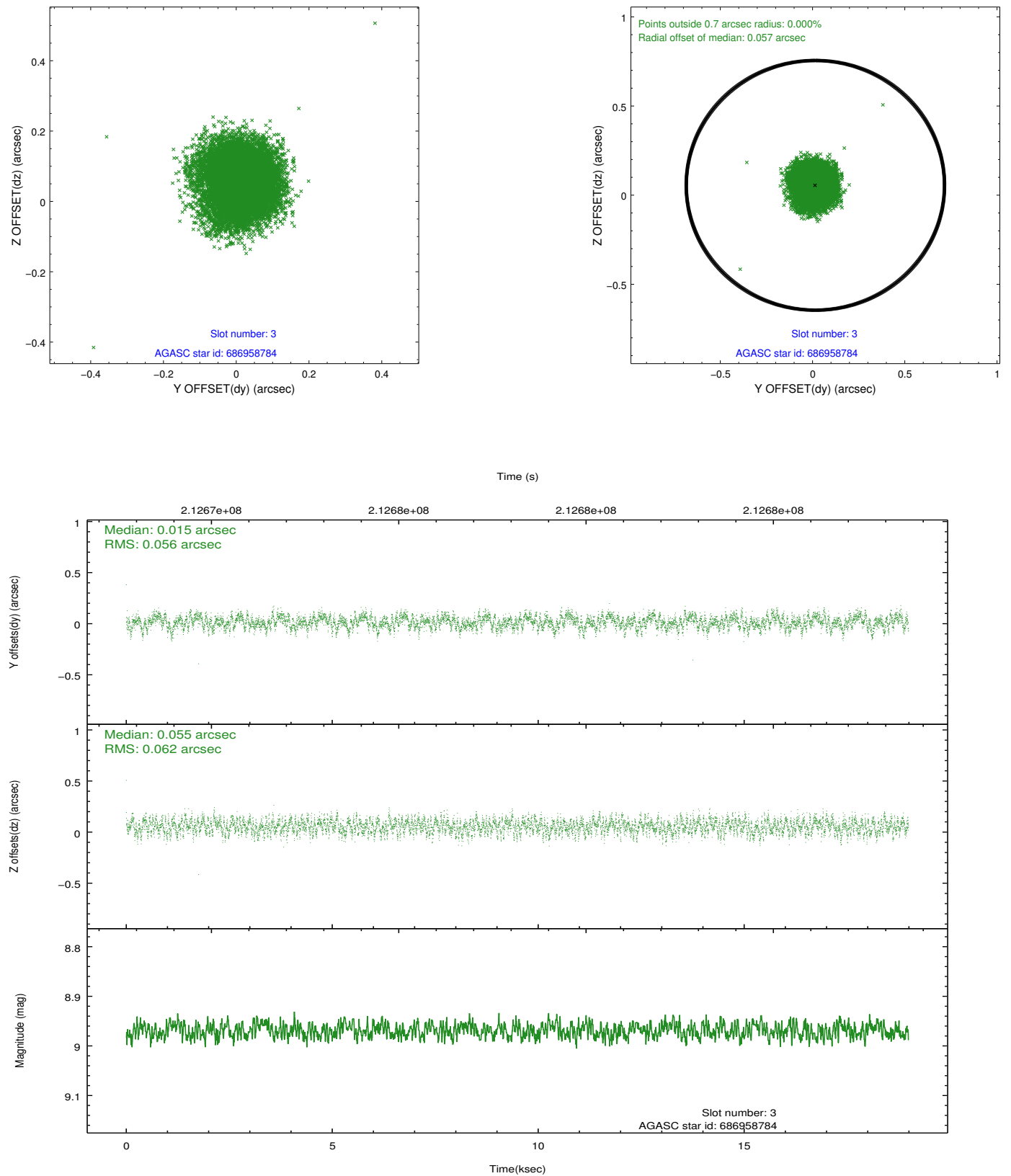


Slot Statistics

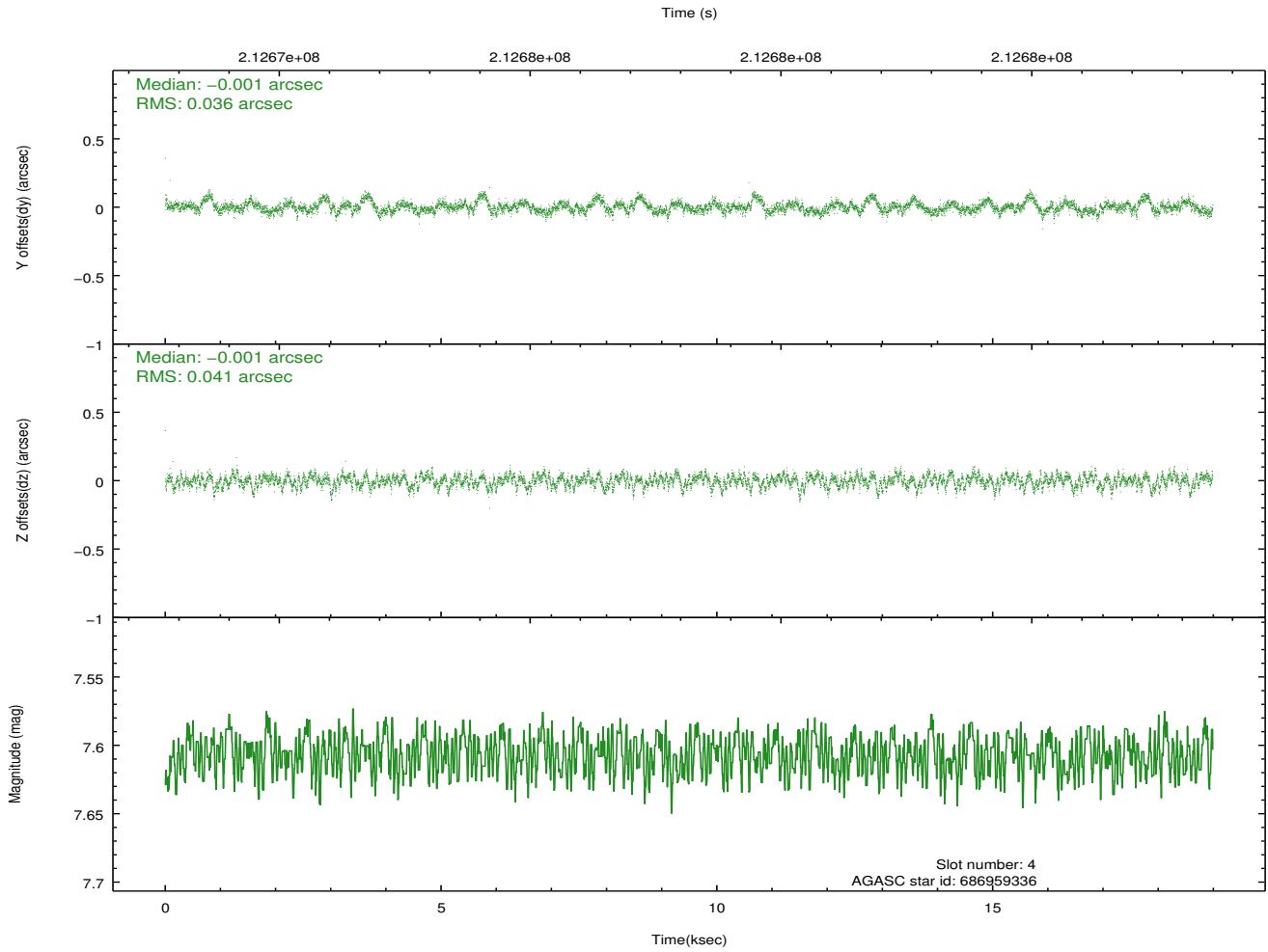
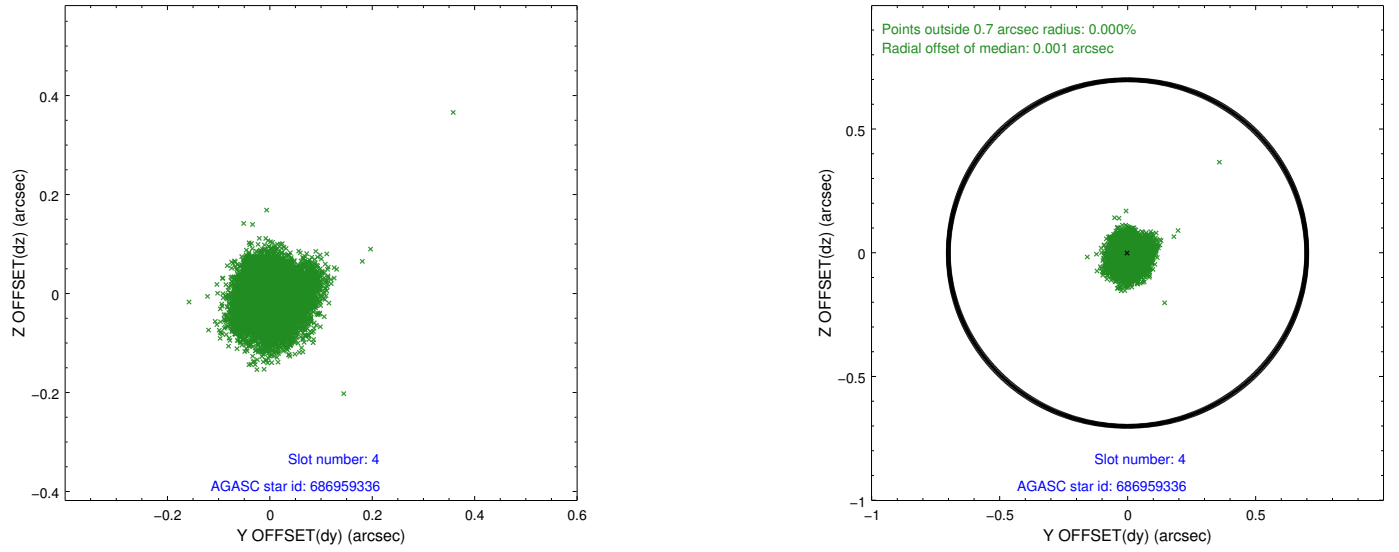
slot	status	id	mag	n_pts	med_dy	med_dz	dr1	dr2	ra	dec	mean_y	mean_z
0	FID	ACIS-S-1	7.19	4632	0.015	-0.059	0.023	0.033	0.000000	0.000000	935.09	-1727.88
1	FID	ACIS-S-4	7.20	4632	0.076	0.036	0.014	0.022	0.000000	0.000000	2152.66	176.16
2	FID	ACIS-S-5	7.23	4631	-0.119	0.033	0.012	0.020	0.000000	0.000000	-1813.66	169.98
3	GUIDE	686958784	8.97	9259	0.015	0.055	0.090	0.139	344.467722	-5.536527	-1292.14	-2352.37
4	GUIDE	686959336	7.61	9259	-0.001	-0.001	0.058	0.095	344.648349	-5.673907	-599.21	-1924.87
5	GUIDE	687477712	8.89	9260	-0.069	-0.011	0.080	0.128	345.588655	-4.951575	-1819.65	2153.72
6	GUIDE	687868160	7.78	9262	0.092	-0.073	0.059	0.093	345.476220	-5.966283	1445.62	467.04
7	GUIDE	687870736	8.58	9258	-0.039	0.037	0.070	0.109	345.435859	-5.326304	-756.78	1158.52

2.4 Star Slots

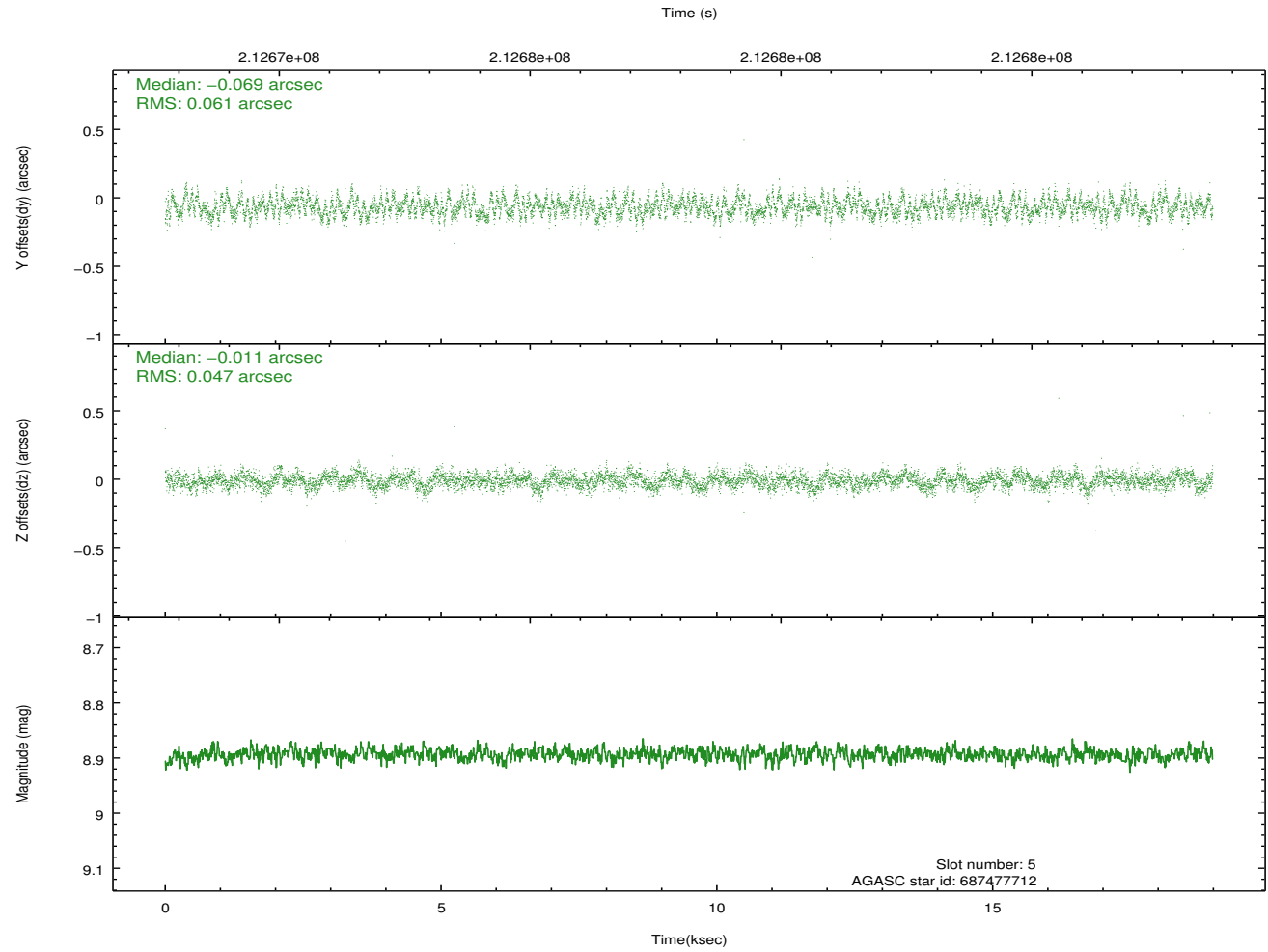
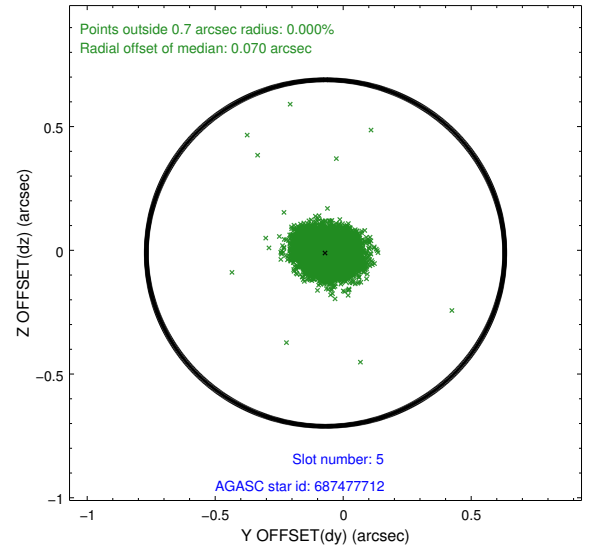
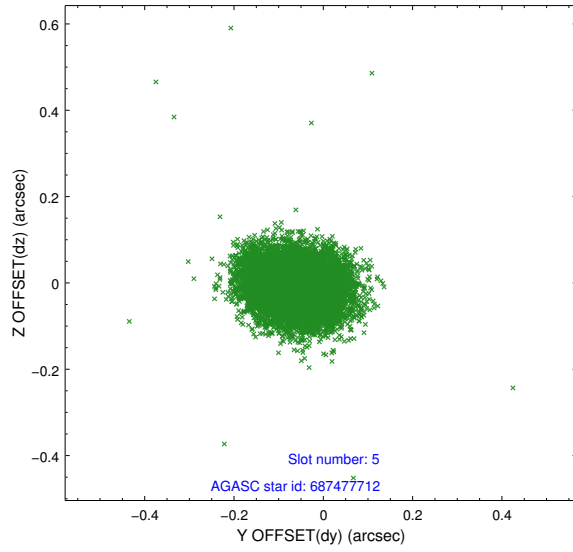
2.4.1 Slot 3



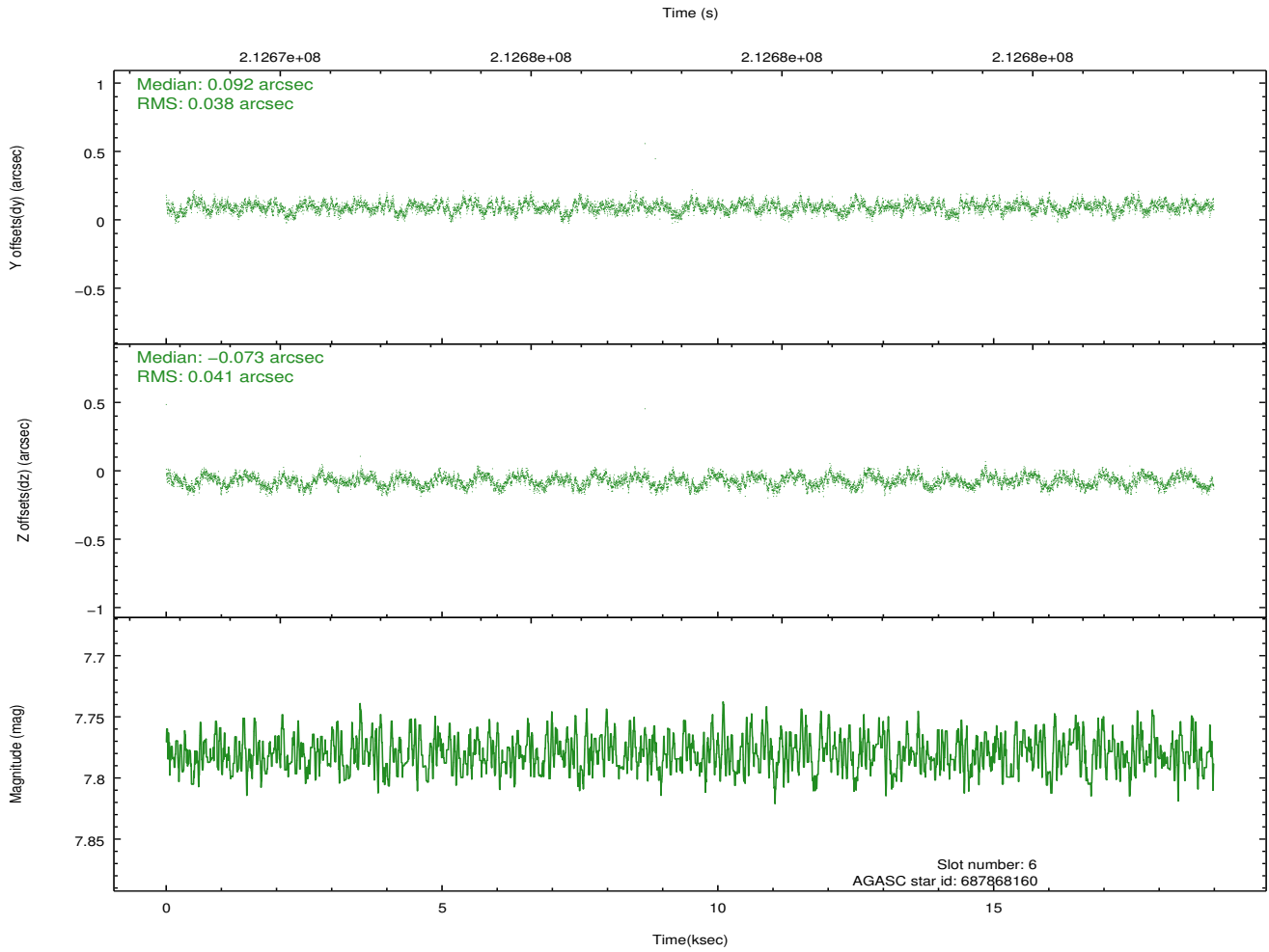
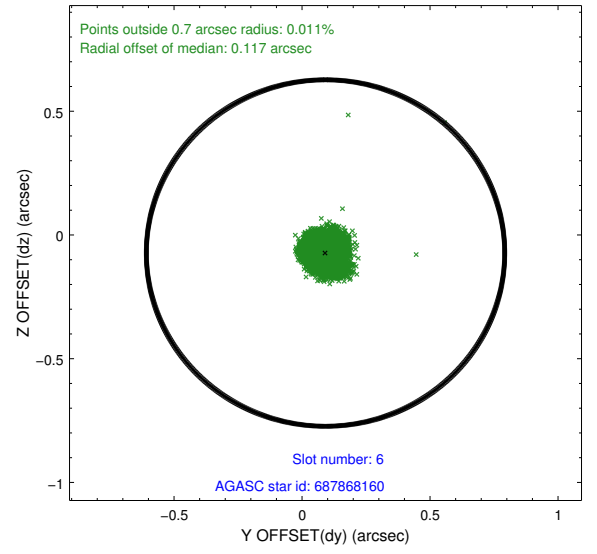
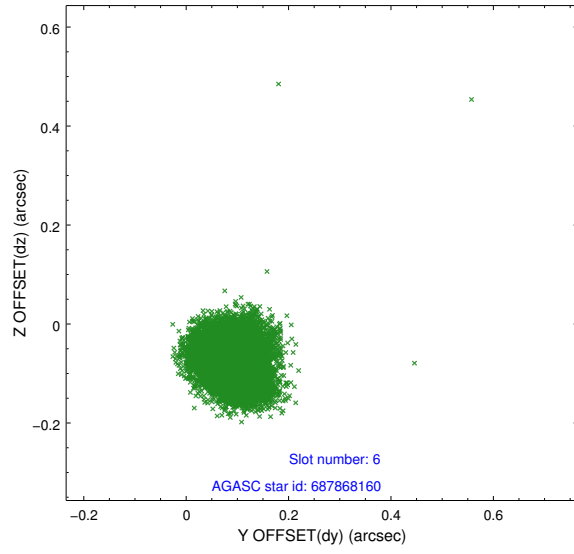
2.4.2 Slot 4



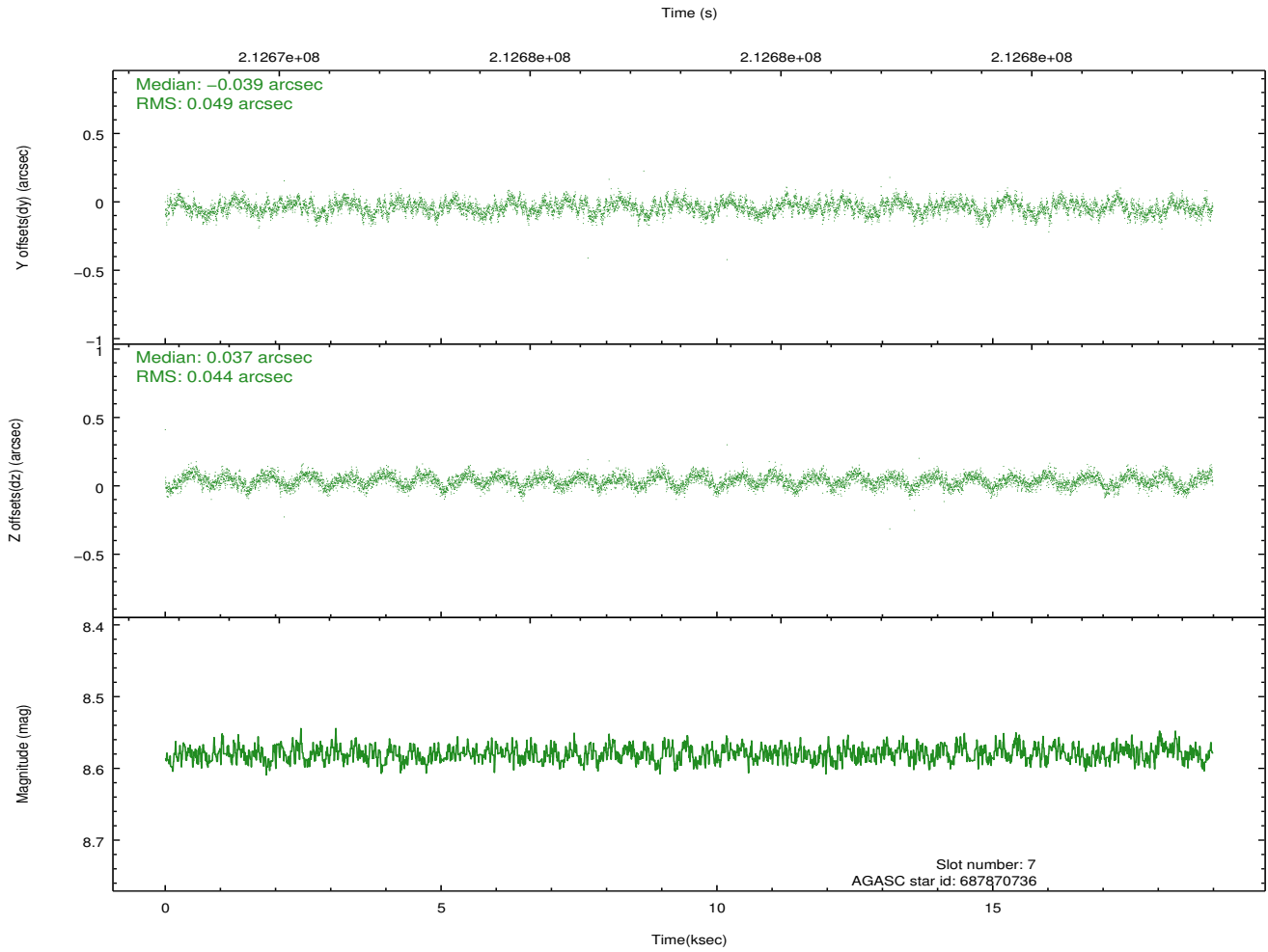
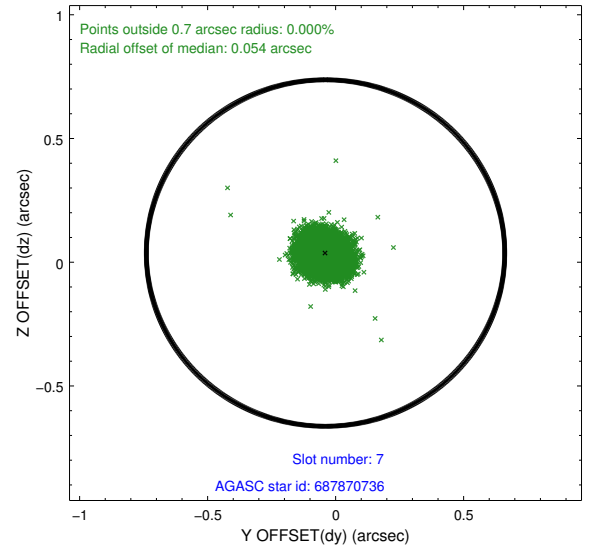
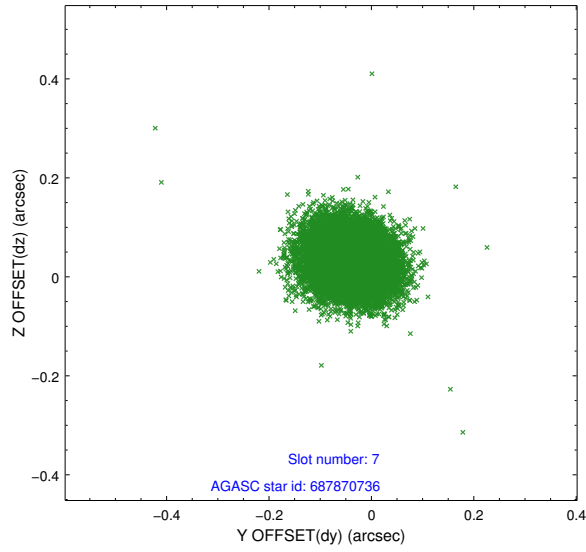
2.4.3 Slot 5



2.4.4 Slot 6

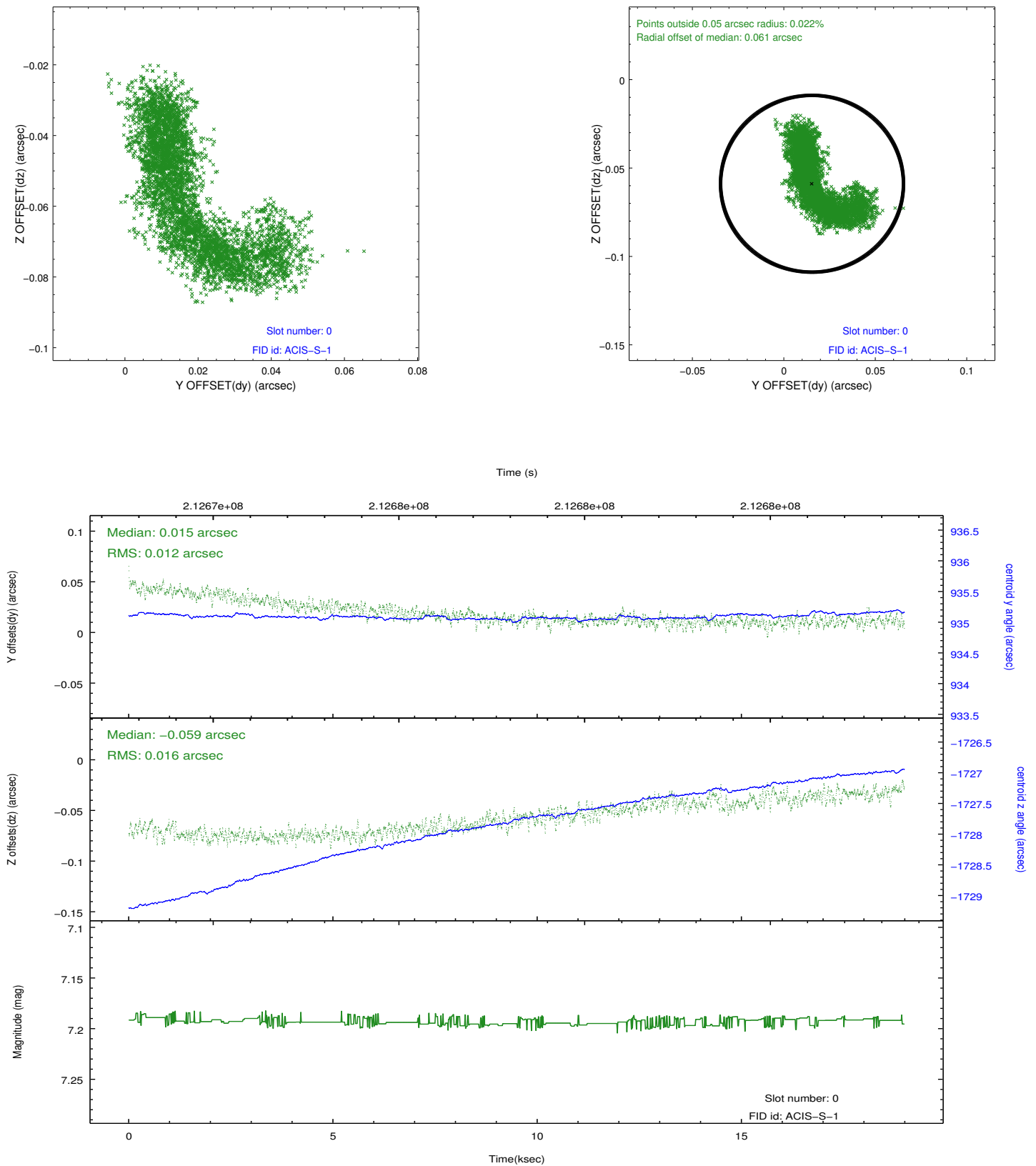


2.4.5 Slot 7

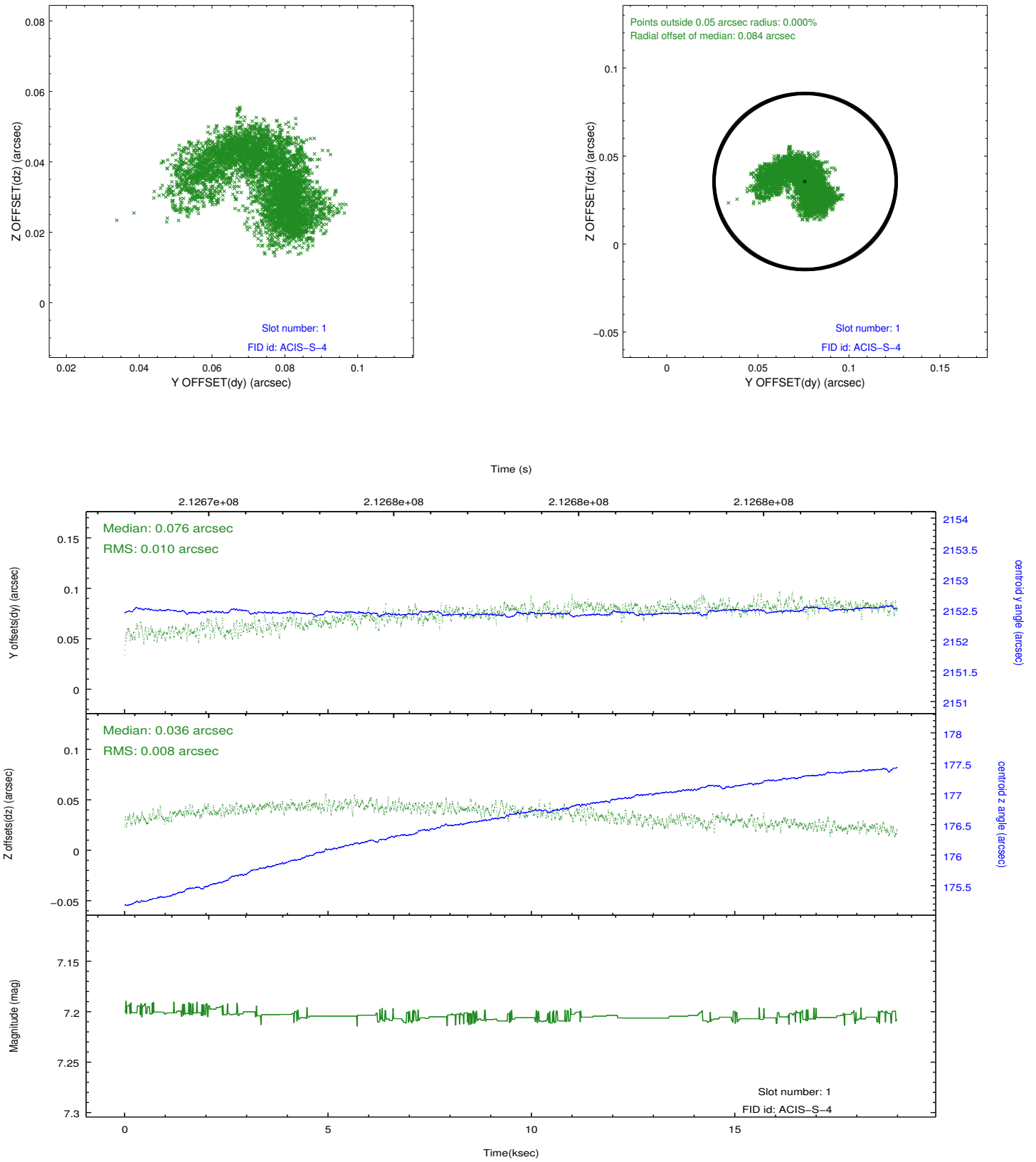


2.5 FID Slots

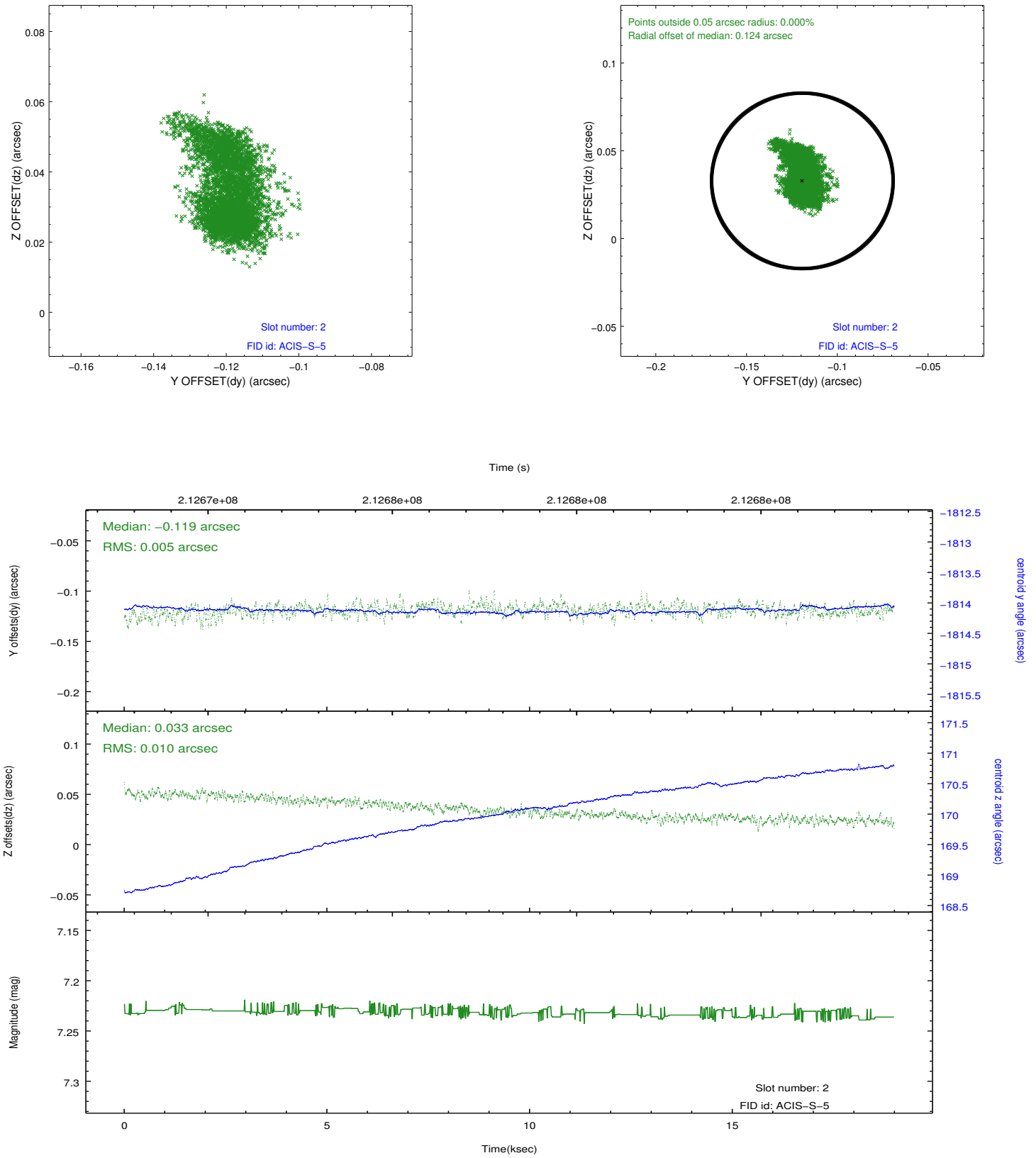
2.5.1 Slot 0



2.5.2 Slot 1



2.5.3 Slot 2



A Summary

A.1 Status

V&V Scientist	Beth Sundheim
V&V Date (YYYY-MM-DD)	2012.12.31
V&V Edition	1
V&V Disposition and Status	OK
V&V Charge Time	18.984

A.2 Comments