

V&V Reference Report

L2 ASCDS Version : 7.6.7.1

Observation 4665 - L2 Version 001
Chandra X-Ray Center

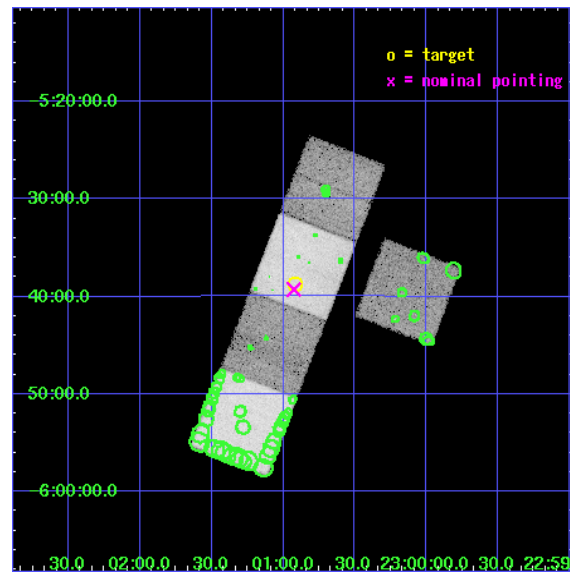
L2 Processing Date : Apr 16 2006

Contents

1	Front	2
2	OBI	3
2.1	OBI	3
2.1.1	Images	3
2.1.2	Bias	3
2.1.3	Parameters	4
2.1.4	Events	4
2.2	Compared Parameters	5
2.3	Aspect	6
2.4	Star Slots	9
2.4.1	Slot 3	9
2.4.2	Slot 4	10
2.4.3	Slot 5	11
2.4.4	Slot 6	12
2.4.5	Slot 7	13
2.5	FID Slots	14
2.5.1	Slot 0	14
2.5.2	Slot 1	15
2.5.3	Slot 2	16
3	Point Sources	17
A	Summary	18
A.1	Status	18
A.2	Comments	18

1 Front

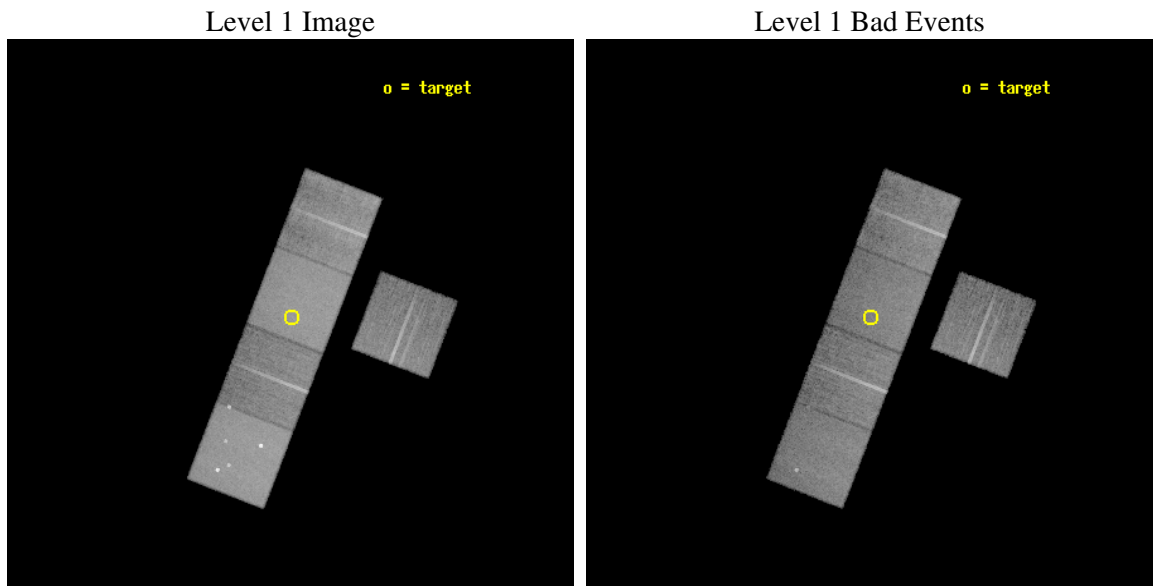
seq_num	500484
obs_id	4665
title	The Energetics and Host Galaxies of X-Ray Flashes
observer	Dr Derek Fox
object	XRF040916
dtcycle	0
cycle	P
ra_targ	345.229583
dec_targ	-5.645278
ra_nom	345.2314495161
dec_nom	-5.654745016431
roll_nom	291.16587794364
revision	2
ontime	18984.399963498
livetime	18736.354801863
ontime3	18981.258963376
ontime5	18984.399963498
ontime6	18984.399963498
ontime7	18984.399963498
ontime8	18981.258963346
l2events	277213



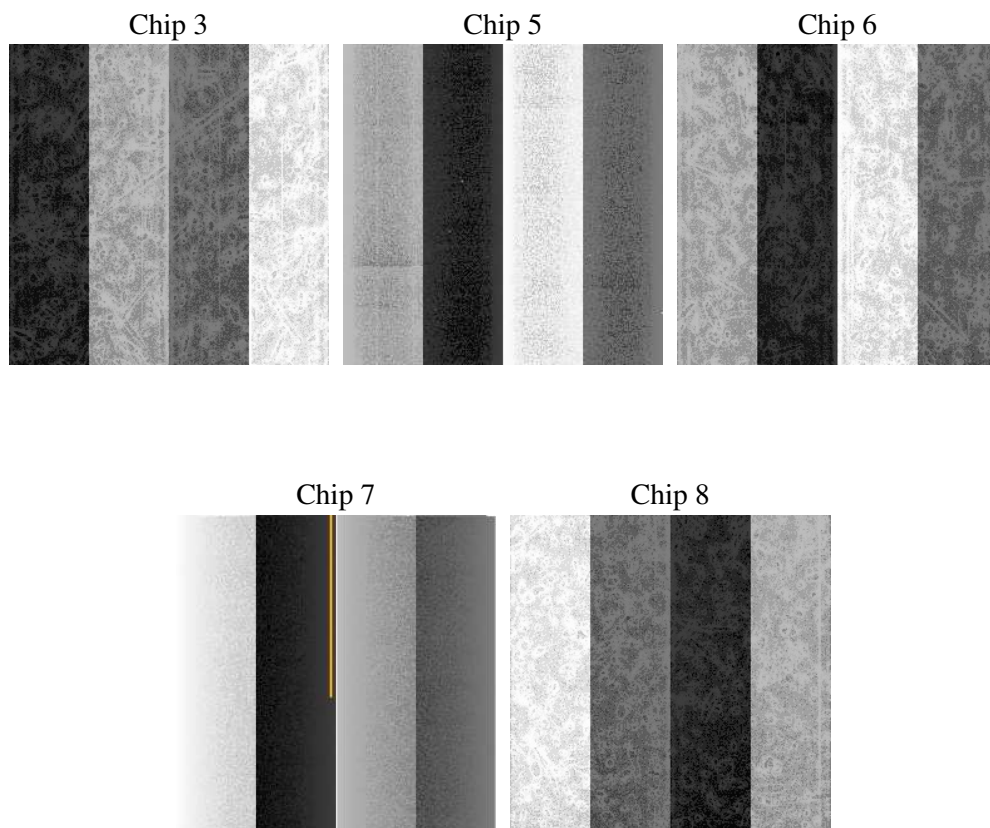
2 OBI

2.1 OBI

2.1.1 Images



2.1.2 Bias



2.1.3 Parameters

obi_num	0
ascdsver	7.6.7.1
caldbver	3.2.1
date	2006-04-16T17:19:13
revision	2

sched_exp_time	18843.752000
ontime	19449.123589575
ontime3	19445.982589453
ontime5	19449.123589575
ontime6	19449.123589575
ontime7	19449.123589575
ontime8	19445.982589424
l1events	983474

2.1.4 Events

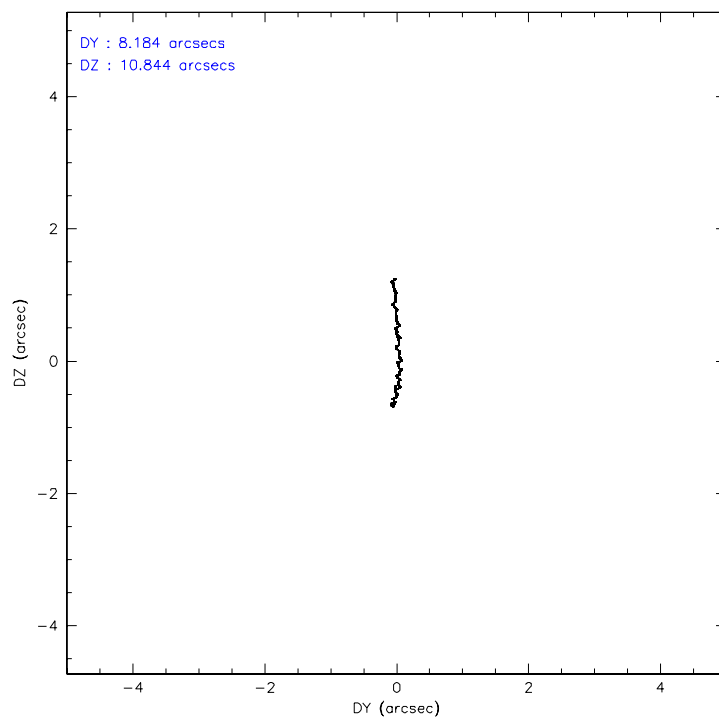
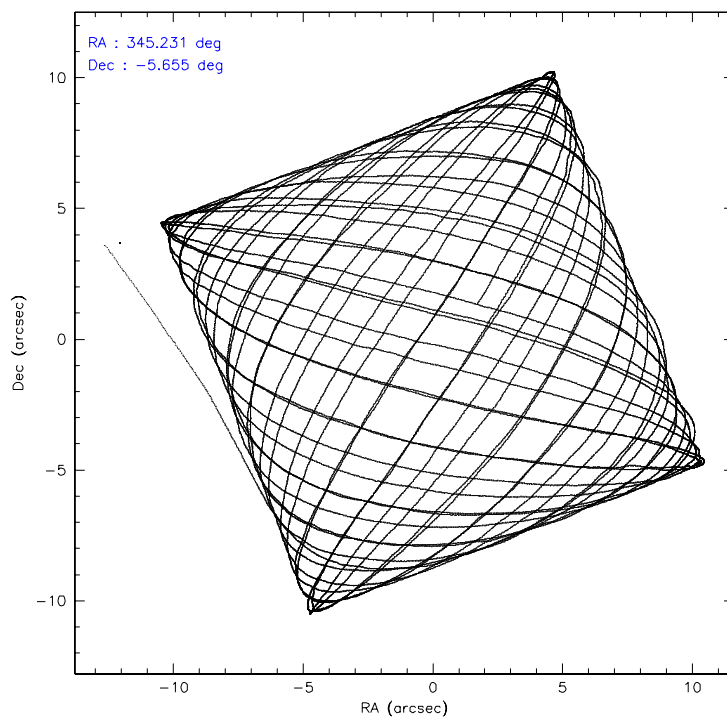
	ccd 3	ccd 5	ccd 6	ccd 7	ccd 8
level 1 events	147596	258931	153653	230930	192364
rejected events	126933	131363	130623	128952	148023
rejected %	86%	50%	85%	55%	76%

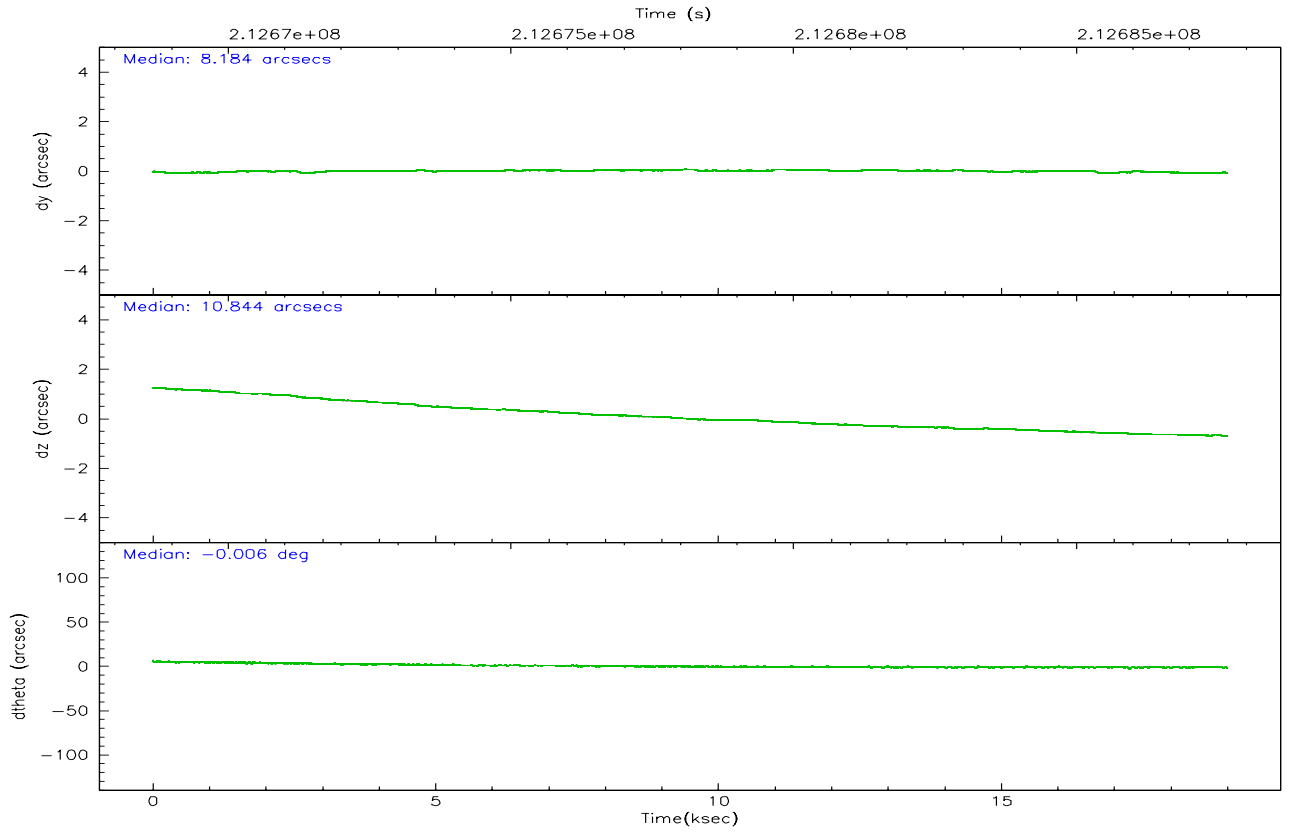
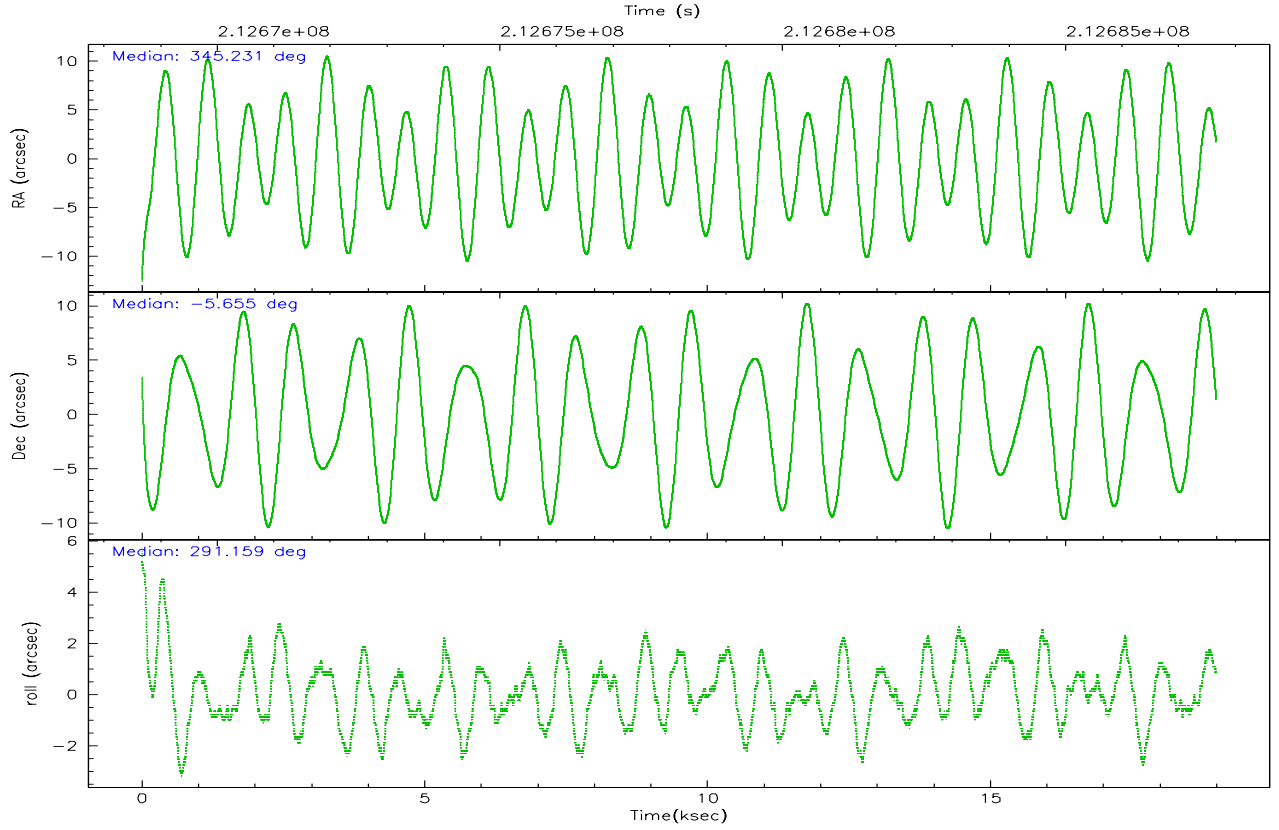
	ccd 3	ccd 5	ccd 6	ccd 7	ccd 8
grade 0 events	10817	15088	11939	6856	17021
	7%	5%	7%	2%	8%
grade 1 events	97	316	89	130	152
	0%	0%	0%	0%	0%
grade 2 events	3597	40185	4297	24203	9414
	2%	15%	2%	10%	4%
grade 3 events	1823	3290	1813	5131	4202
	1%	1%	1%	2%	2%
grade 4 events	1717	3028	1814	5153	3970
	1%	1%	1%	2%	2%
grade 5 events	6536	11444	6750	13100	8868
	4%	4%	4%	5%	4%
grade 6 events	3097	68421	3579	62426	10466
	2%	26%	2%	27%	5%
grade 7 events	119912	117159	123372	113931	138271
	81%	45%	80%	49%	71%

2.2 Compared Parameters

Parameter	Planned	Actual	Parameter	Planned	Actual
Instrument	ACIS	ACIS	Obspar format version number	6	6
Detector	ACIS-35678	ACIS-35678	Obspar file type	PREDICTED	ACTUAL
Grating	NONE	NONE	Obspar update status	NONE	UPDATED
Data mode	VFAINT	VFAINT	On-chip summing requested	N	N
Observation mode	POINTING	POINTING	Subarray requested	NONE	NONE
Pointing RA	345.209905	345.2314495161016	Alternating exposures requested	N	N
Pointing Dec	-5.637986	-5.654745016430957	Primary exposure time	0.000000	3.1
Pointing Roll	291.007122	291.1658779436395			
SIM focus pos (mm)	-0.684267	-0.6828225247311905			
SIM defocus (mm)	0	0.001444936568705701			
SIM translation stage pos (mm)	-190.132523	-190.1425803651734			
SIM translation stage offset (mm)	0	0.01005778216563158			
Observation start time	212668818.184000	212667608.3165			
Observation start date	2004-09-27T10:39:14	2004-09-27T10:20:08			
Observation end time	212687662.184000	212687888.96741			
Observation end date	2004-09-27T15:53:18	2004-09-27T15:58:08			
Read mode	TIMED	TIMED			

2.3 Aspect



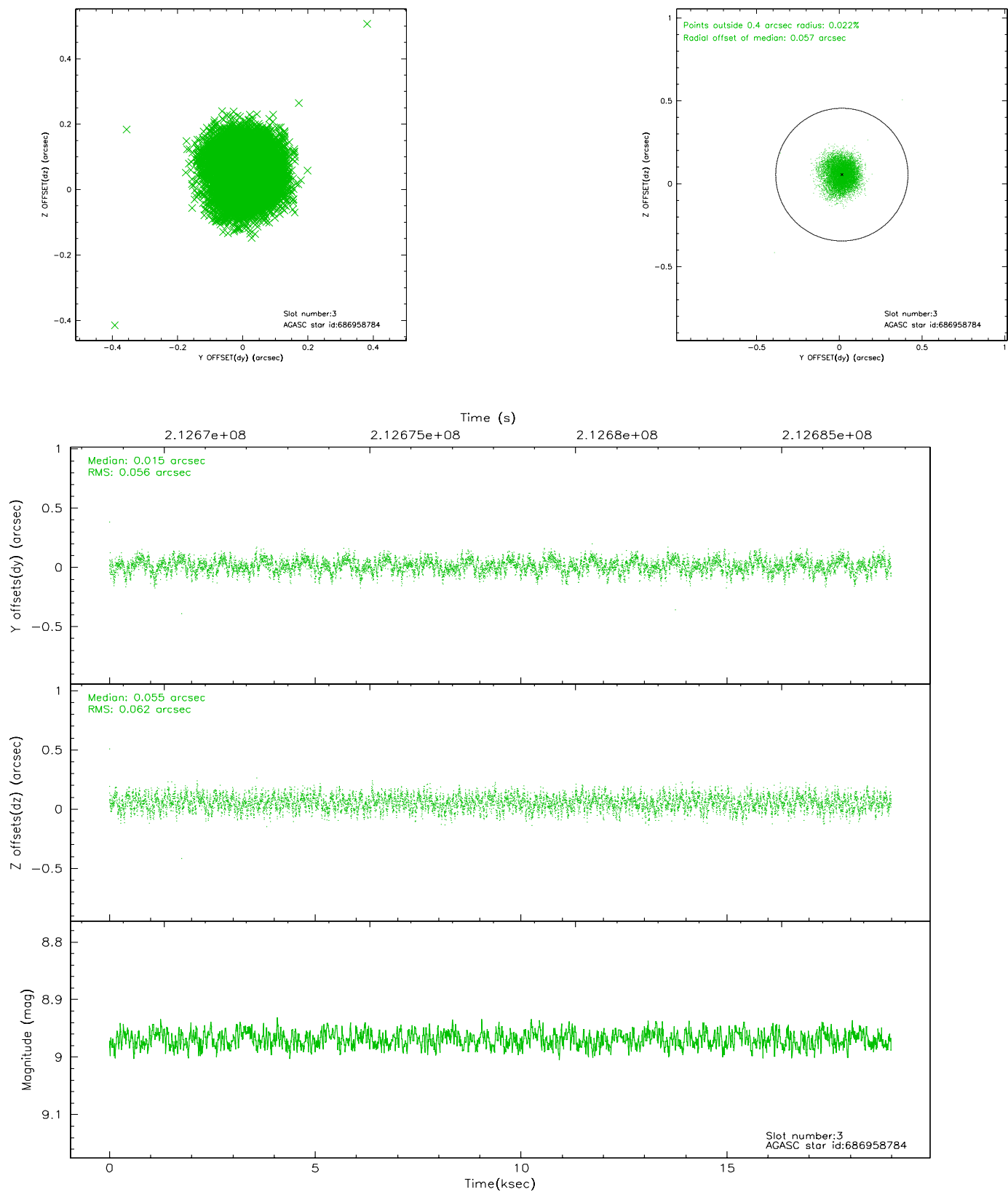


Slot Statistics

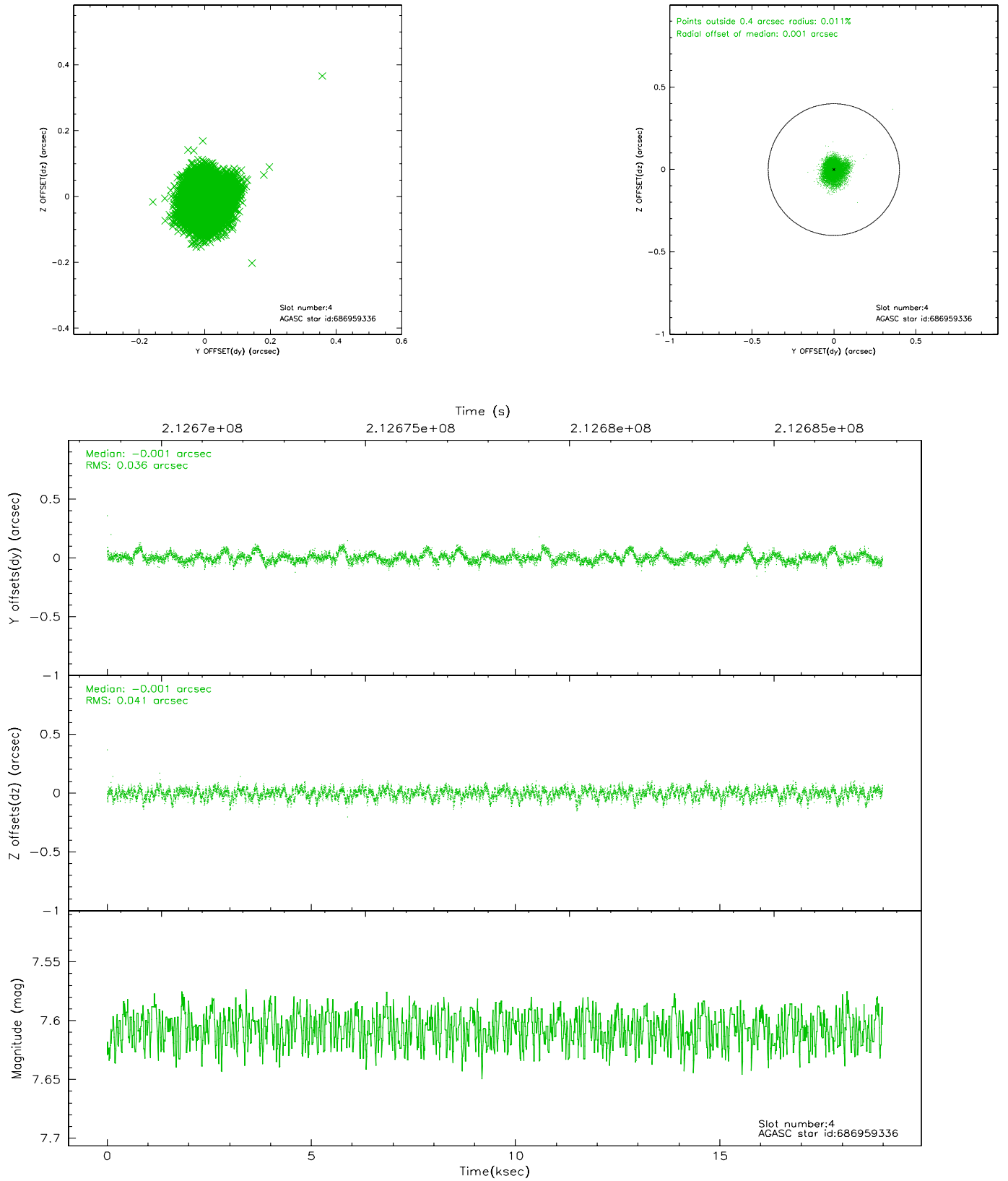
slot	status	id	mag	n_pts	med_dy	med_dz	dr1	dr2	ra	dec	mean_y	mean_z
0	FID	ACIS-S-1	7.19	4632	0.006	-0.036	0.022	0.031	0.000000	0.000000	935.07	-1727.84
1	FID	ACIS-S-4	7.20	4632	0.045	0.024	0.015	0.026	0.000000	0.000000	2152.62	176.17
2	FID	ACIS-S-5	7.23	4631	-0.078	0.022	0.011	0.017	0.000000	0.000000	-1813.63	169.98
3	GUIDE	686958784	8.97	9259	0.015	0.055	0.090	0.139	344.467722	-5.536527	-1292.14	-2352.37
4	GUIDE	686959336	7.61	9259	-0.001	-0.001	0.058	0.095	344.648349	-5.673907	-599.21	-1924.87
5	GUIDE	687477712	8.89	9260	-0.069	-0.011	0.080	0.128	345.588655	-4.951575	-1819.65	2153.72
6	GUIDE	687868160	7.78	9262	0.092	-0.073	0.059	0.093	345.476220	-5.966283	1445.62	467.04
7	GUIDE	687870736	8.58	9258	-0.039	0.037	0.070	0.109	345.435859	-5.326304	-756.78	1158.52

2.4 Star Slots

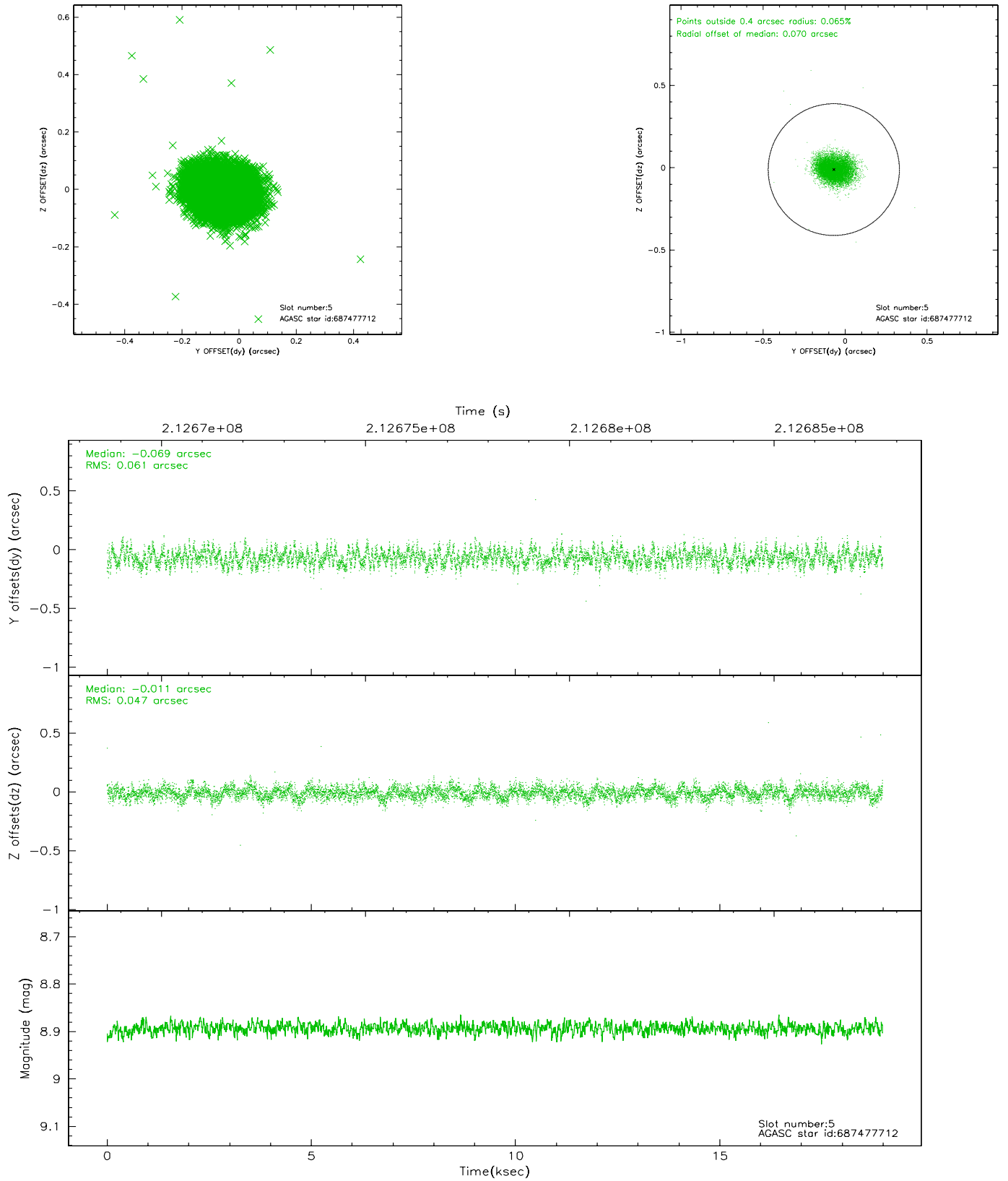
2.4.1 Slot 3



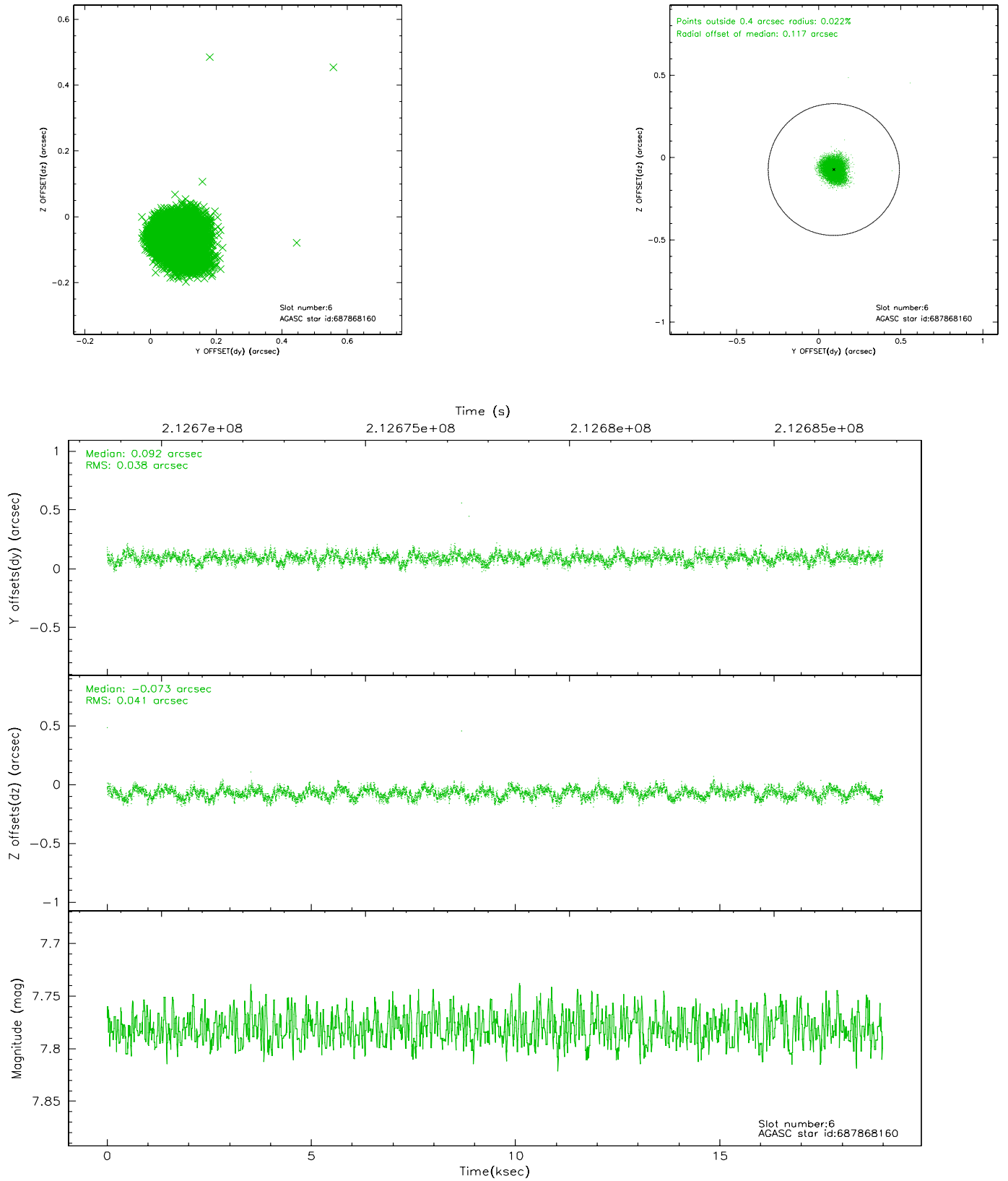
2.4.2 Slot 4



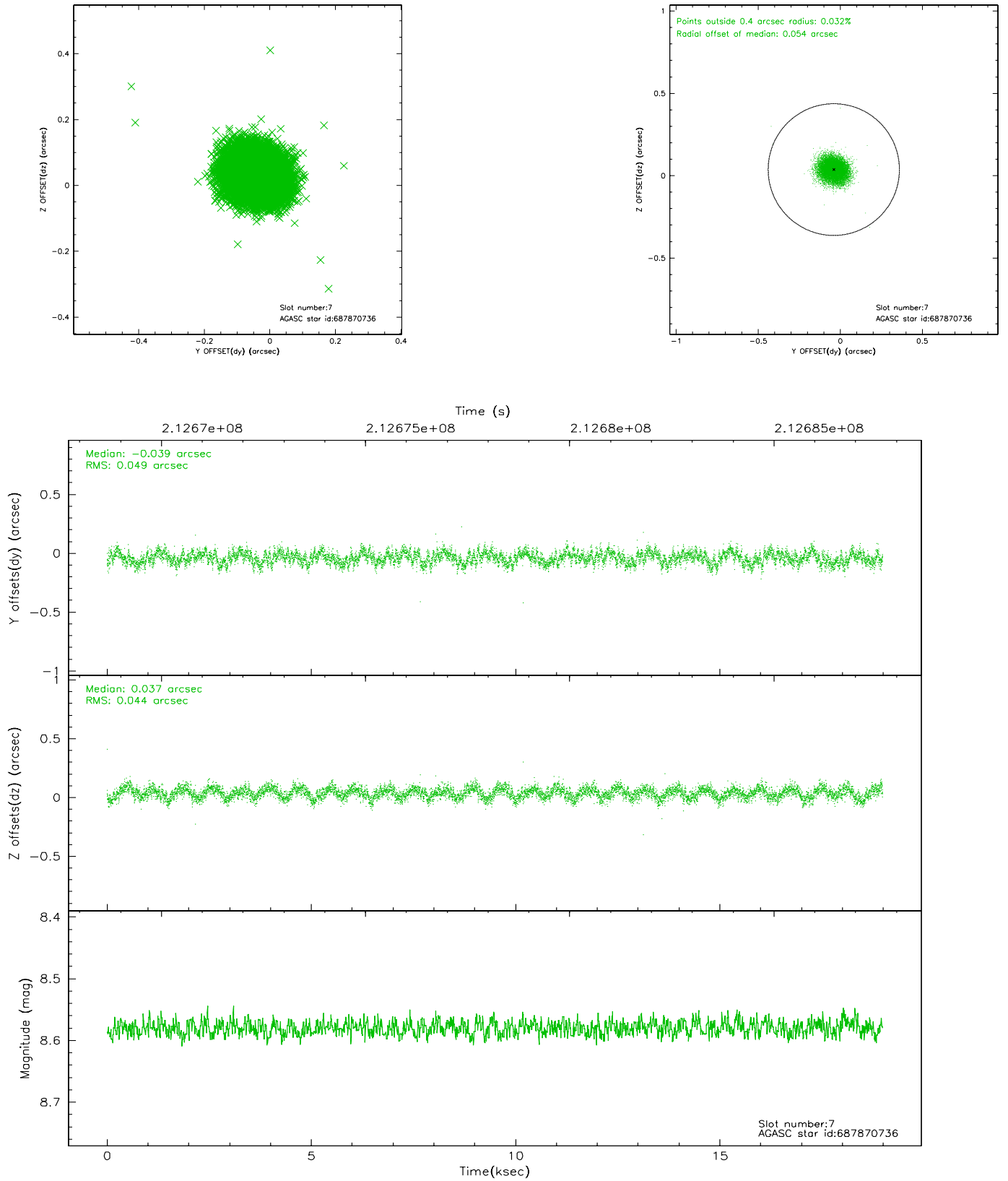
2.4.3 Slot 5



2.4.4 Slot 6

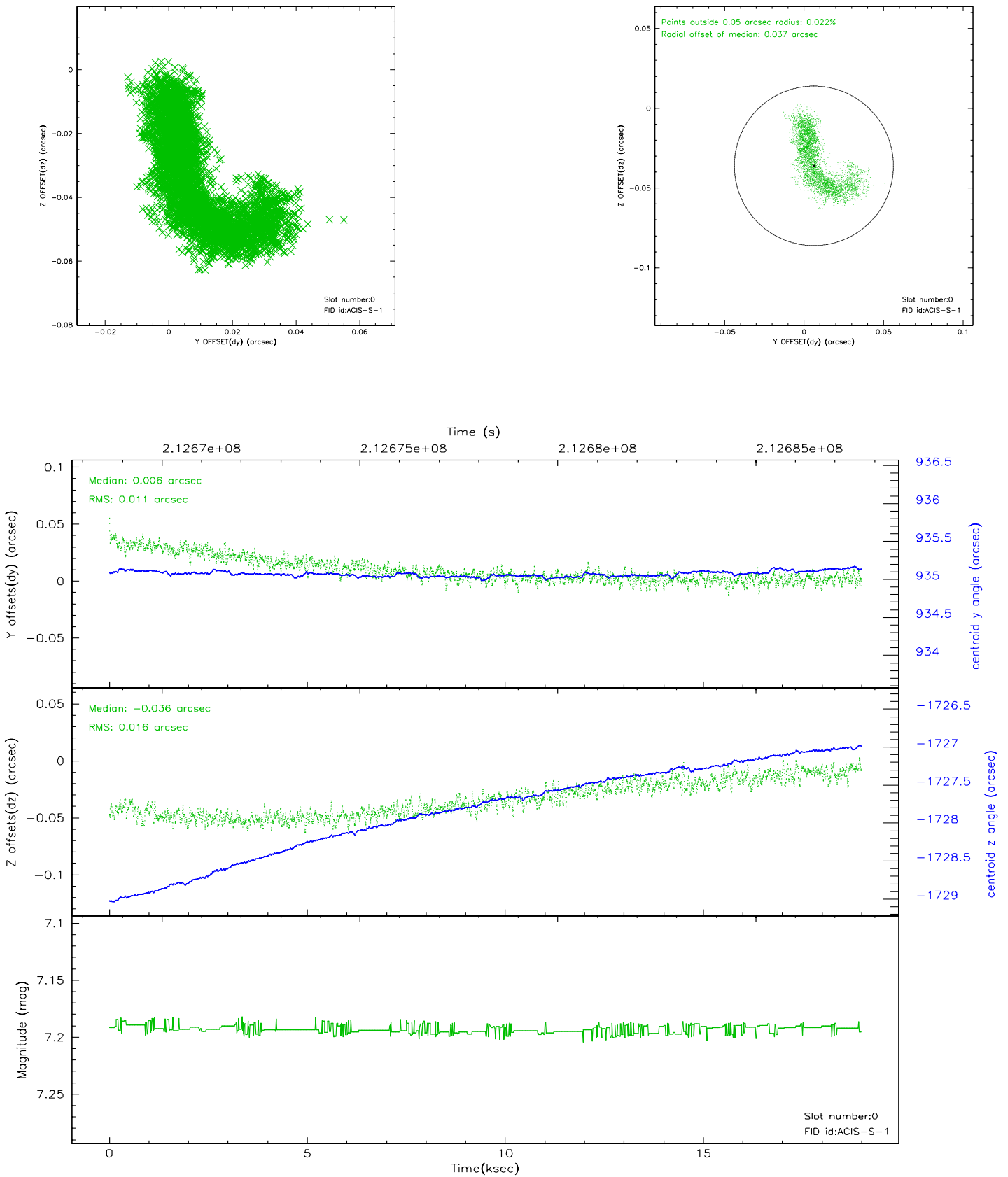


2.4.5 Slot 7

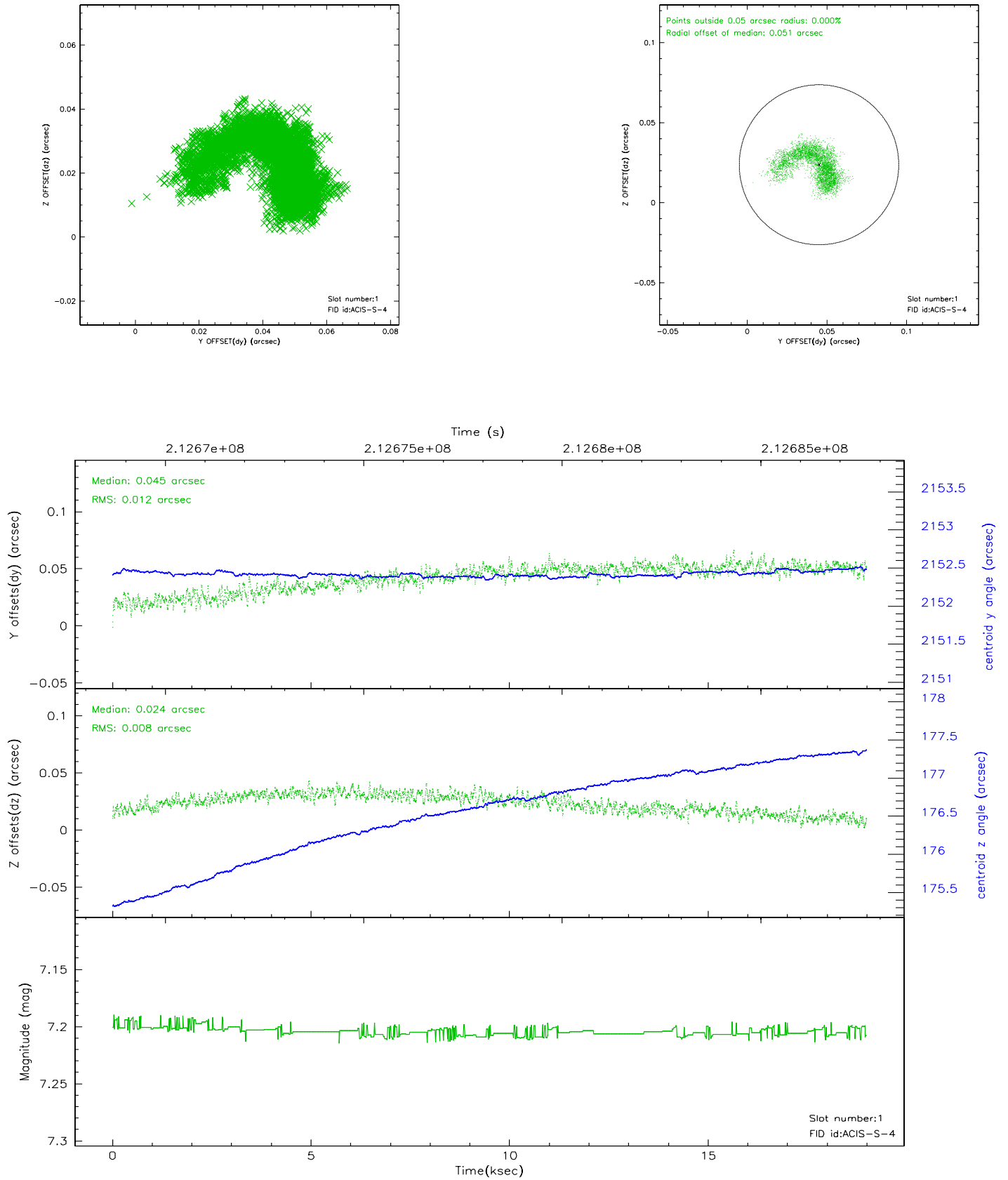


2.5 FID Slots

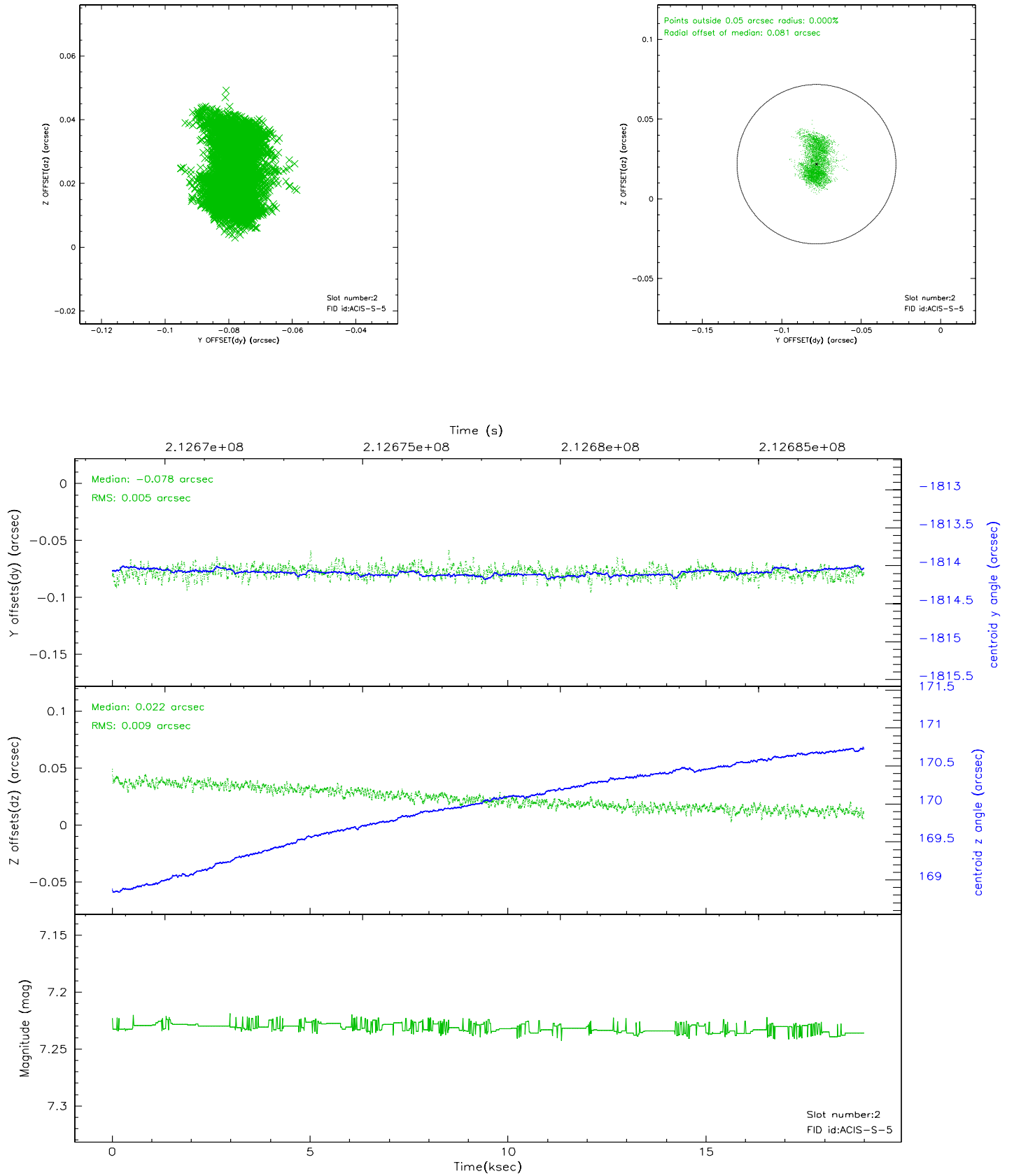
2.5.1 Slot 0



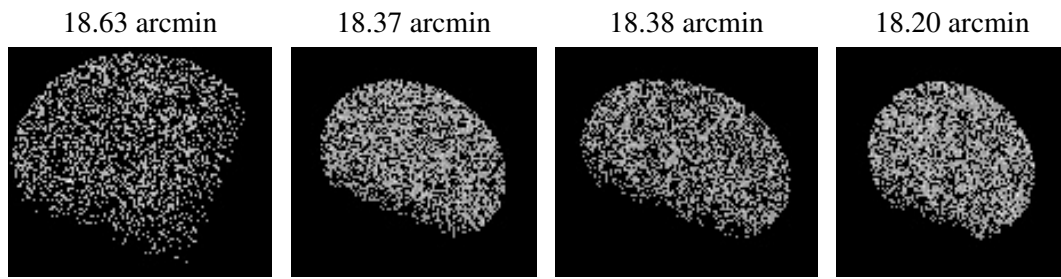
2.5.2 Slot 1



2.5.3 Slot 2



3 Point Sources



A Summary

A.1 Status

V&V Scientist	Beth Sundheim
V&V Date (YYYY-MM-DD)	2006.04.16
V&V Edition	1
V&V Disposition and Status	OK
V&V Charge Time	18.984

A.2 Comments