

# V&V Reference Report

## L2 ASCDS Version : 8.4.5

Observation 4649 - L2 Version 3  
Chandra X-Ray Center

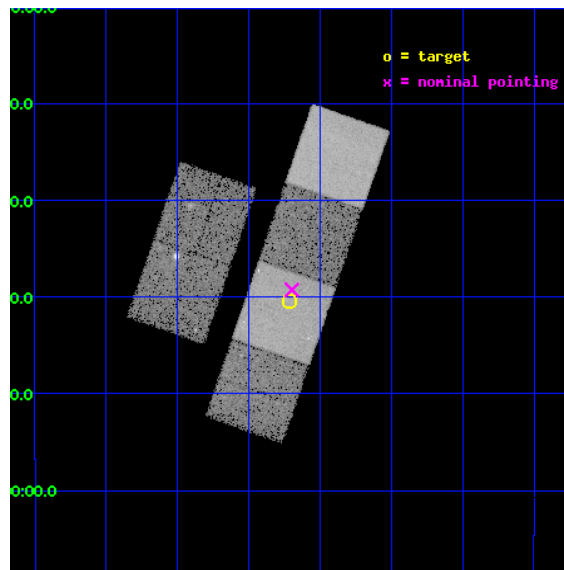
L2 Processing Date : Dec 1 2012

## Contents

<b>1</b>	<b>Front</b>	<b>2</b>
<b>2</b>	<b>OBI</b>	<b>3</b>
2.1	OBI . . . . .	3
2.1.1	Images . . . . .	3
2.1.2	Bias . . . . .	3
2.1.3	Parameters . . . . .	4
2.1.4	Events . . . . .	4
2.2	Compared Parameters . . . . .	5
2.3	Aspect . . . . .	6
2.4	Star Slots . . . . .	9
2.4.1	Slot 3 . . . . .	9
2.4.2	Slot 4 . . . . .	10
2.4.3	Slot 5 . . . . .	11
2.4.4	Slot 6 . . . . .	12
2.4.5	Slot 7 . . . . .	13
2.5	FID Slots . . . . .	14
2.5.1	Slot 0 . . . . .	14
2.5.2	Slot 1 . . . . .	15
2.5.3	Slot 2 . . . . .	16
<b>A</b>	<b>Summary</b>	<b>17</b>
A.1	Status . . . . .	17
A.2	Comments . . . . .	17

# 1 Front

seq_num	500468	Sequence number
obs_id	4649	Observation id
title	G26.6-0.1: A New, Nearby, Crab-like SNR in a Star Formation Region	&#160
observer	Prof. David Helfand	Principal investigator
object	G26.6-0.1	Source name
dtcycle	0	&#160
cycle	P	events from which exps? Prim/Second/Both
ra_targ	280.054583	Observer's specified target RA [deg]
dec_targ	-5.674444	Observer's specified target Dec [deg]
ra_nom	280.04942240676	Nominal RA [deg]
dec_nom	-5.6543037878818	Nominal Dec [deg]
roll_nom	109.07419624379	Nominal Roll [deg]
revision	3	Processing version of data
ontime	20358.399924159	Sum of GTIs [s]
liveltime	20100.609605963	Livetime [s]
ontime2	20358.399924159	Sum of GTIs [s]
ontime3	20355.158943862	Sum of GTIs [s]
ontime5	20358.399924159	Sum of GTIs [s]
ontime6	20358.399924159	Sum of GTIs [s]
ontime7	20358.399924159	Sum of GTIs [s]
ontime8	20358.399924159	Sum of GTIs [s]
l2events	174453	Number of level 2 events

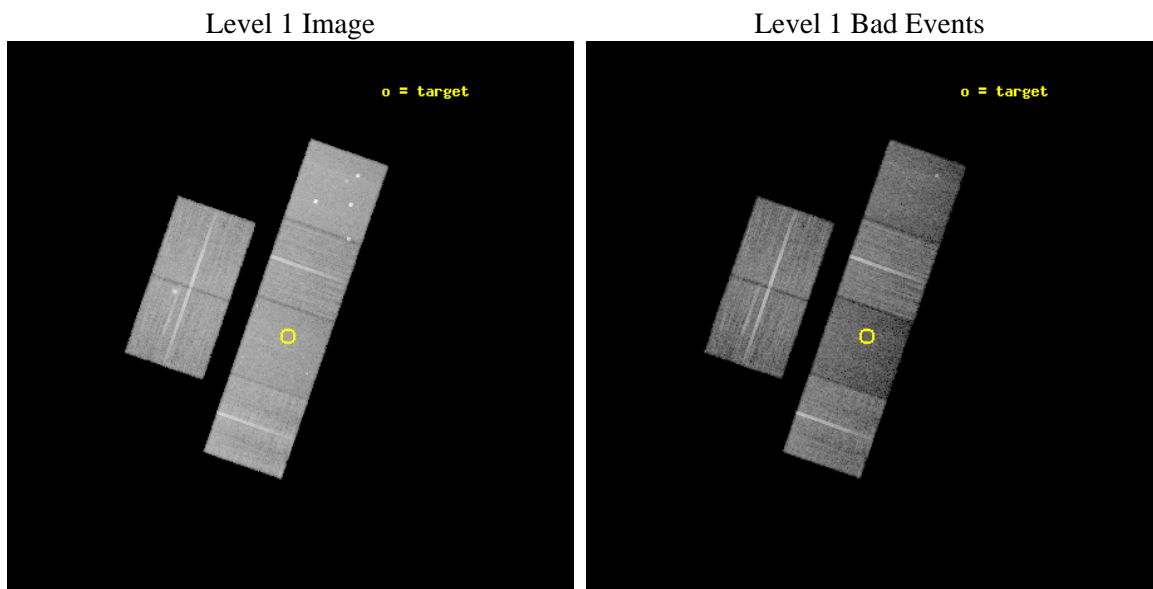




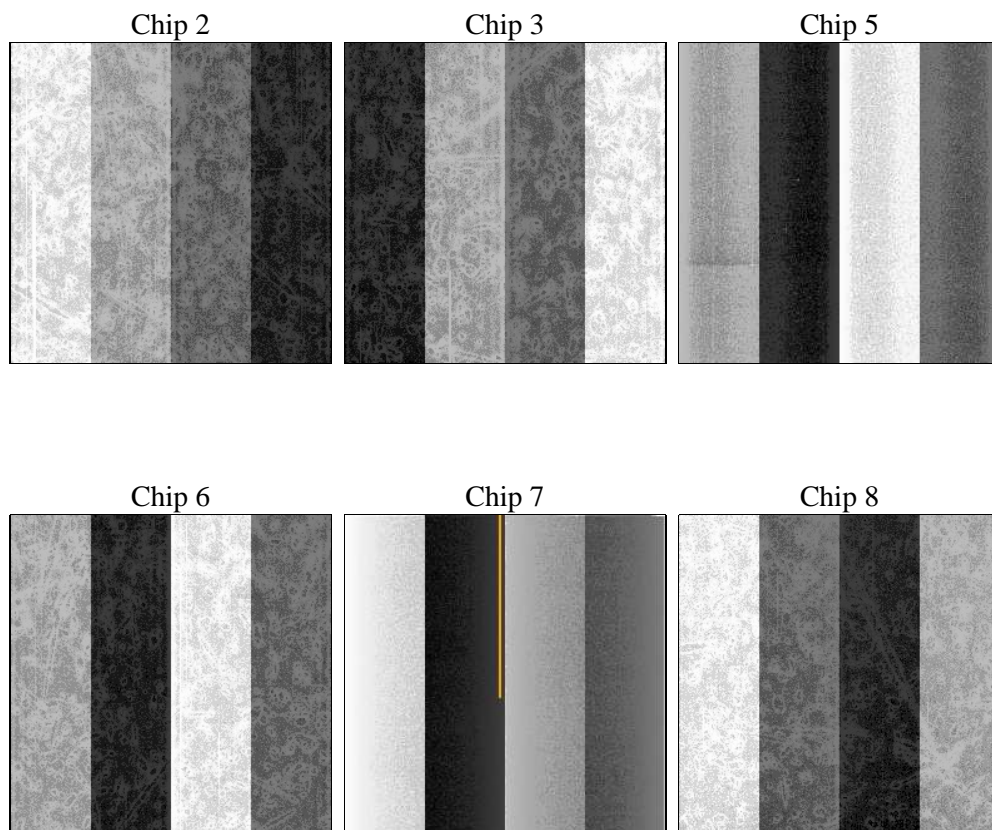
## 2 OBI

### 2.1 OBI

#### 2.1.1 Images



#### 2.1.2 Bias



### 2.1.3 Parameters

obi_num	0	Obi number	sched_exp_time	20400.000000	[s] Scheduled observation exposure time
ascdsver	8.4.5	Processing system revision	ontime	20358.399924159	Sum of GTIs [s]
caldsver	4.5.2	&#160	ontime2	20358.399924159	Sum of GTIs [s]
date	2012-12-01T07:29:58	Date and time of file creation	ontime3	20355.158943862	Sum of GTIs [s]
revision	3	Processing version of data	ontime5	20358.399924159	Sum of GTIs [s]
			ontime6	20358.399924159	Sum of GTIs [s]
			ontime7	20358.399924159	Sum of GTIs [s]
			ontime8	20358.399924159	Sum of GTIs [s]
			l1events	757319	Number of level 1 events

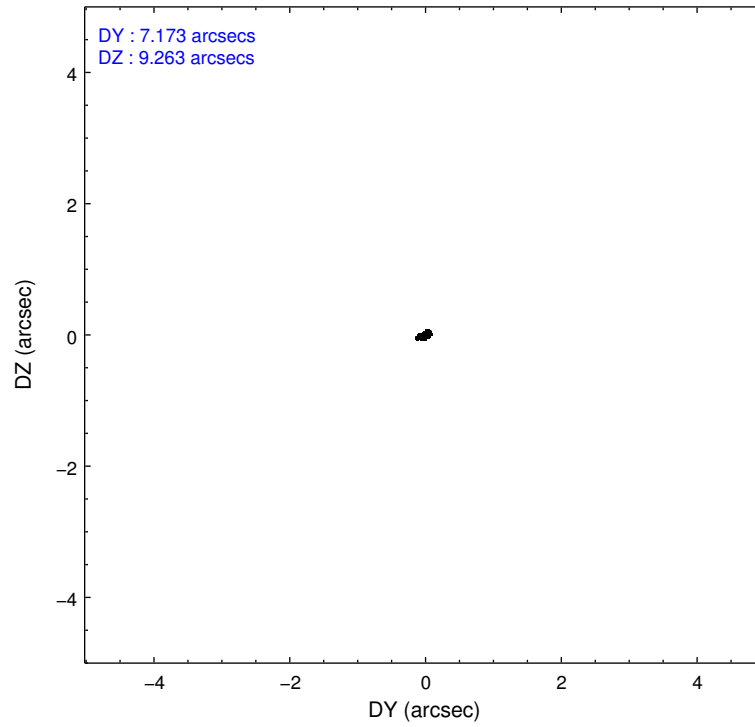
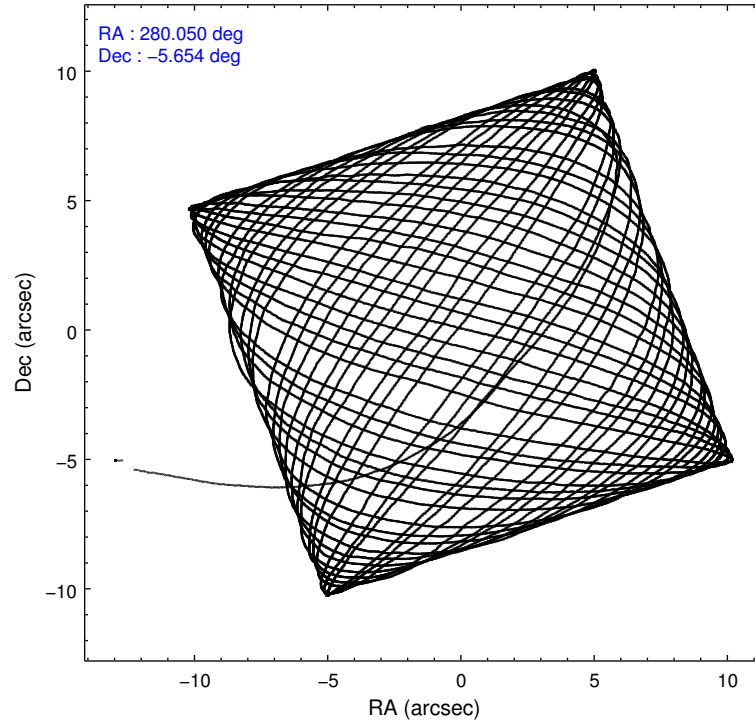
### 2.1.4 Events

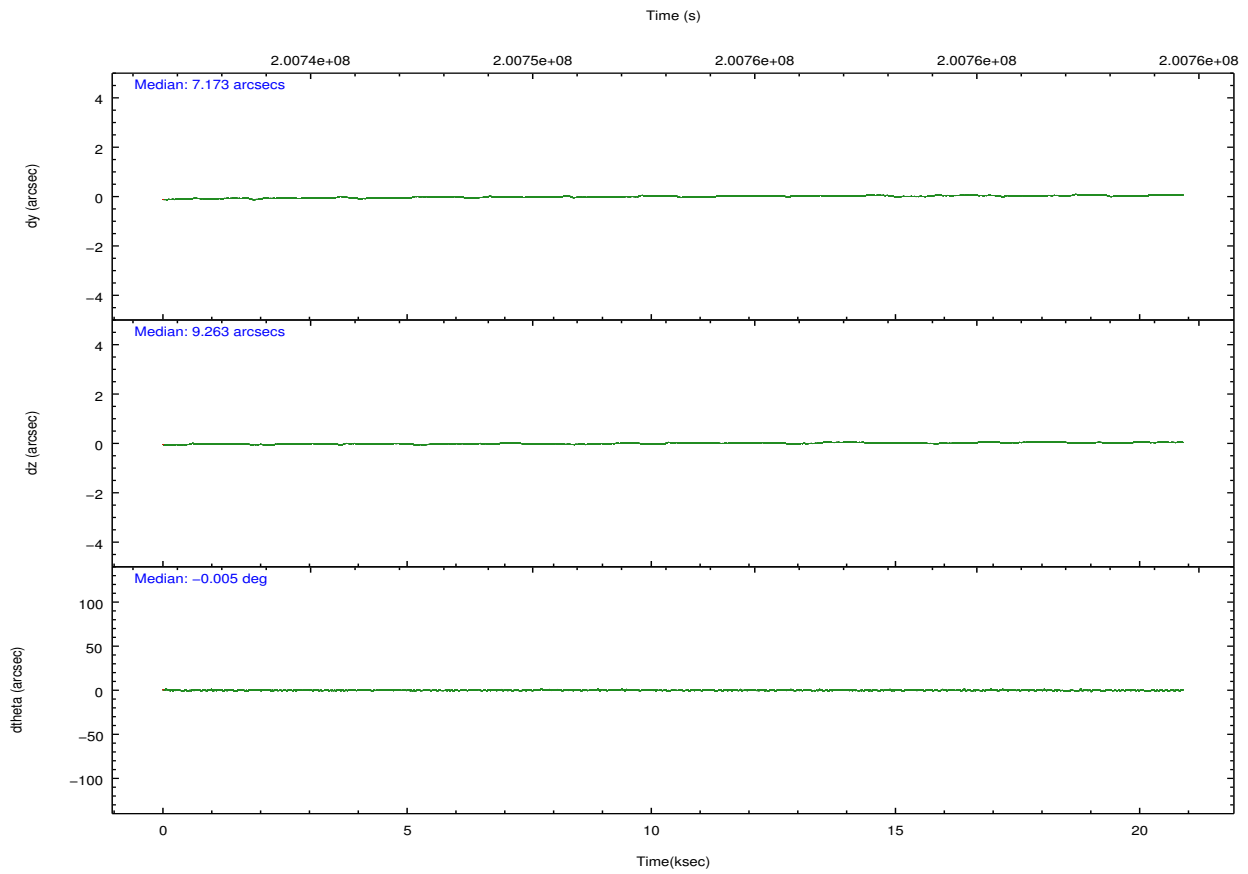
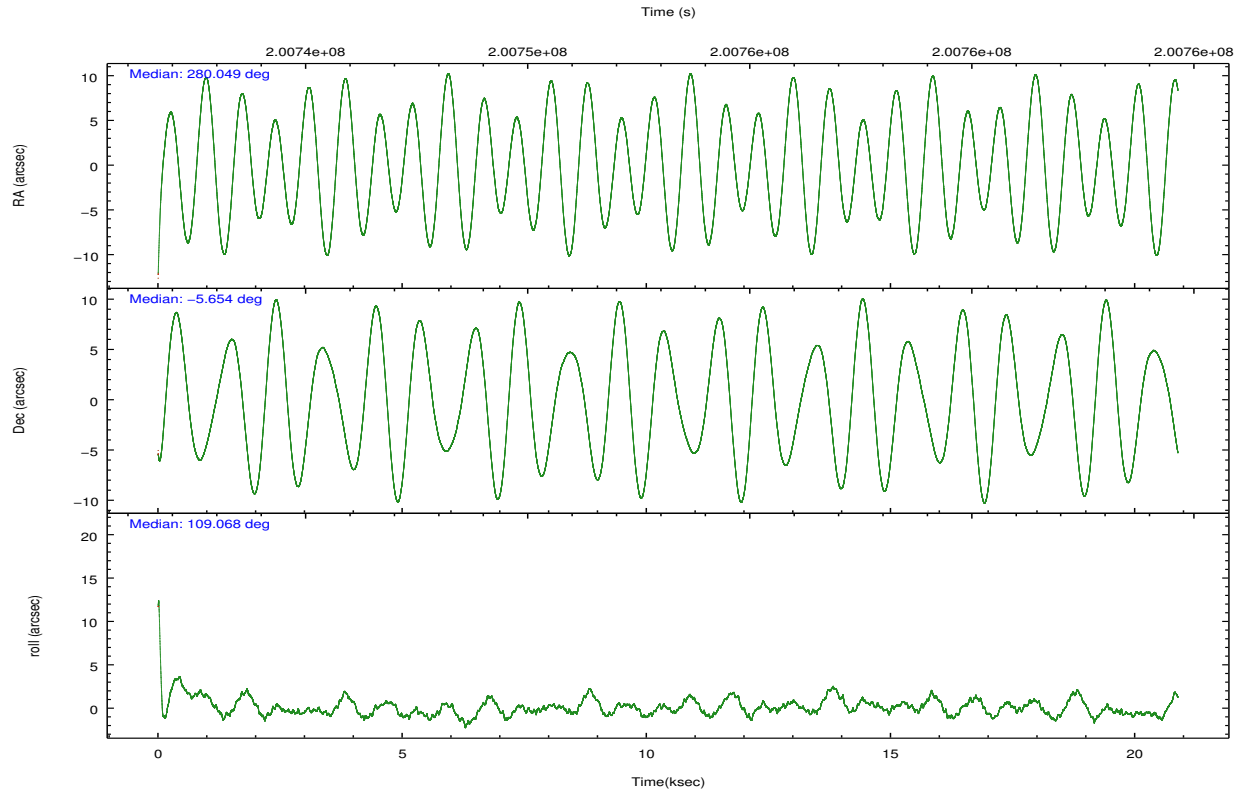
	ccd 2	ccd 3	ccd 5	ccd 6	ccd 7	ccd 8		ccd 2	ccd 3	ccd 5	ccd 6	ccd 7	ccd 8
level 1 events	125059	115834	146579	115796	111642	142409	grade 0 events	5881	6945	14735	5743	6255	11315
rejected events	111853	101329	65811	102220	54667	108332		4%	5%	10%	4%	5%	7%
rejected %	89%	87%	44%	88%	48%	76%	grade 1 events	75	74	496	58	99	110
								0%	0%	0%	0%	0%	0%
							grade 2 events	2828	2691	21949	2754	12260	7441
								2%	2%	14%	2%	10%	5%
							grade 3 events	1254	1434	3783	1419	5501	3500
								1%	1%	2%	1%	4%	2%
							grade 4 events	1289	1344	3506	1338	5717	3452
								1%	1%	2%	1%	5%	2%
							grade 5 events	3317	3725	11708	3999	11722	5702
								2%	3%	7%	3%	10%	4%
							grade 6 events	1954	2092	36806	2322	27245	8371
								1%	1%	25%	2%	24%	5%
							grade 7 events	108461	97529	53596	98163	42843	102518
								86%	84%	36%	84%	38%	71%

## 2.2 Compared Parameters

Parameter	Planned	Actual	Parameter	Planned	Actual
Instrument	ACIS	ACIS	Obspar format version number	7	7
Detector	ACIS-235678	ACIS-235678	Obspar file type	PREDICTED	ACTUAL
Grating	NONE	NONE	Obspar update status	NONE	UPDATED
Data mode	VFAINT	VFAINT	Number of optional ACIS chips dropped	0	0
Observation mode	POINTING	POINTING	On-chip summing requested	N	N
[deg] Pointing RA	280.070350	280.0494224067556	Subarray requested	NONE	NONE
[deg] Pointing Dec	-5.671888	-5.654303787881796	Alternating exposures requested	N	N
[deg] Pointing Roll	108.919629	109.0741962437913	[s] Primary exposure time	0.000000	3.2
[mm] SIM focus pos	-0.684267	-0.6828225247311905			
[mm] SIM defocus	0	0.001444936568705701			
[mm] SIM translation stage pos	-190.132523	-190.1400660498719			
[mm] SIM translation stage offset	0	0.00754346686406393			
[s] Observation start time (MET)	200743206.184000	200742098.19946			
Observation start date	2004-05-12T09:59:02	2004-05-12T09:41:38			
[s] Observation end time (MET)	200763606.184000	200764934.17546			
Observation end date	2004-05-12T15:39:02	2004-05-12T16:02:14			
Read mode	TIMED	TIMED			

## 2.3 Aspect



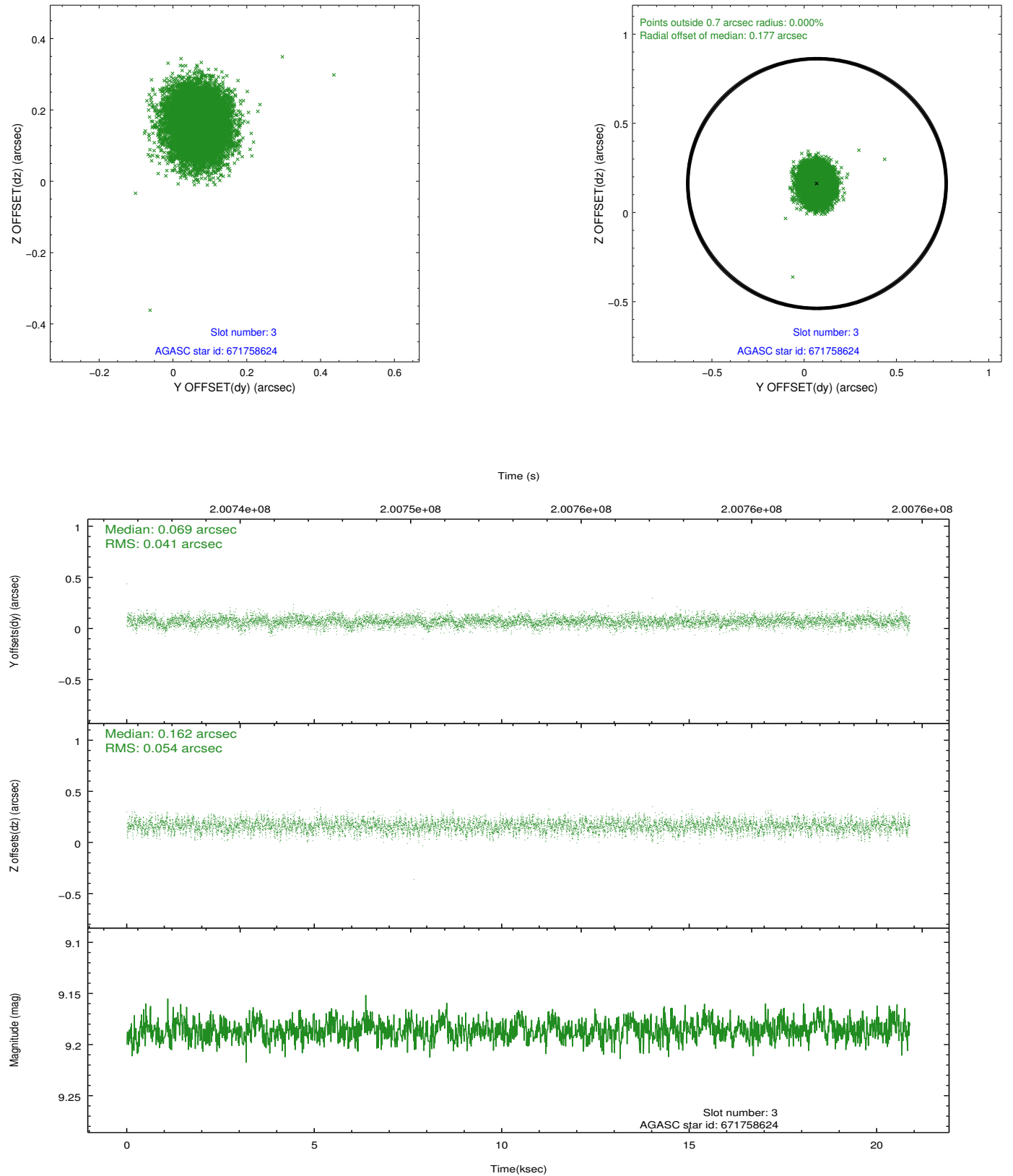


### Slot Statistics

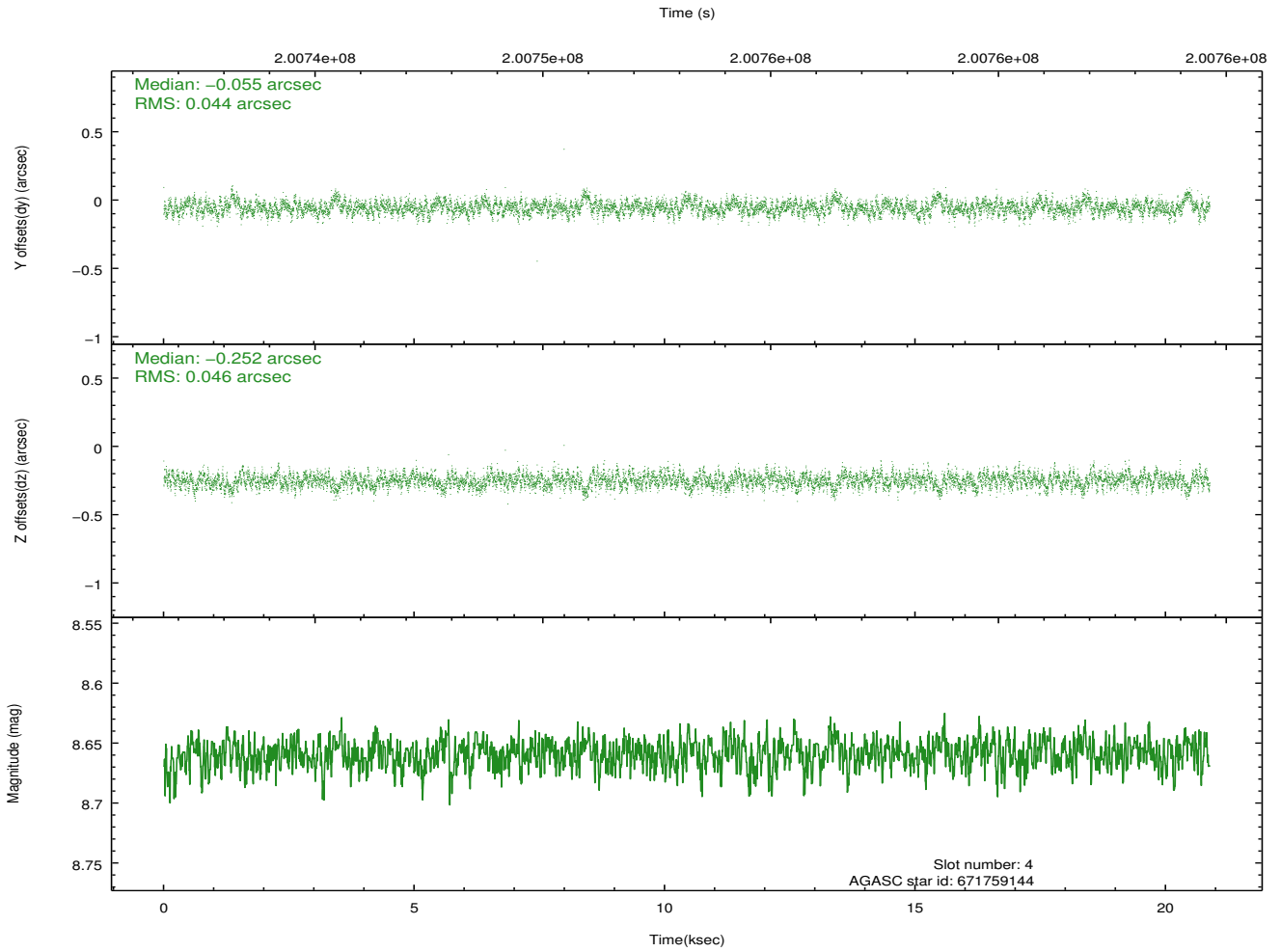
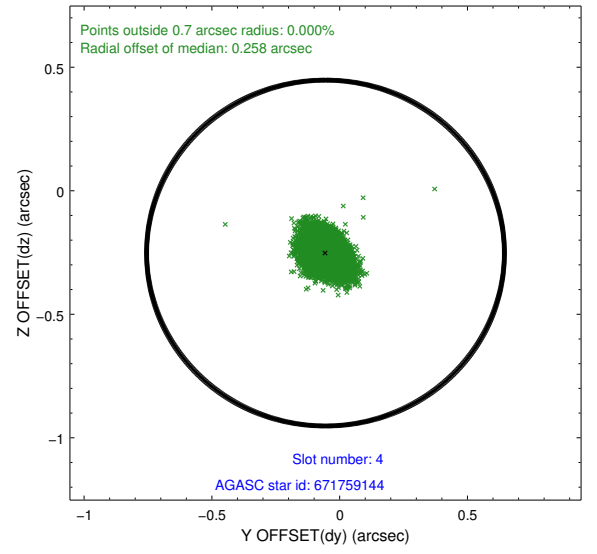
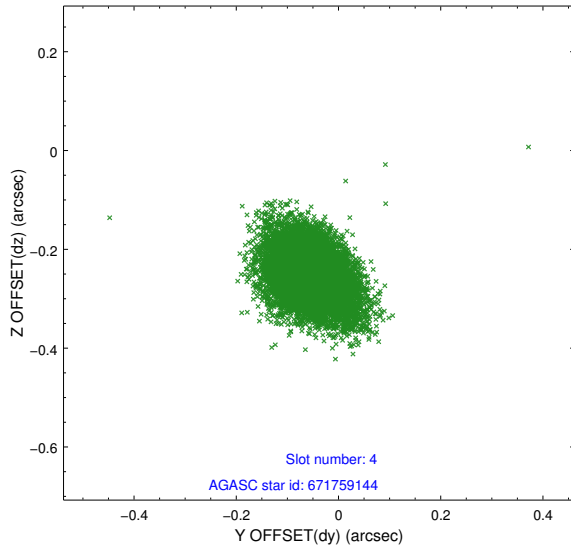
slot	status	id	mag	n_pts	med_dy	med_dz	dr1	dr2	ra	dec	mean_y	mean_z
0	FID	ACIS-S-1	7.19	5094	0.038	-0.014	0.006	0.011	0.000000	0.000000	936.15	-1726.13
1	FID	ACIS-S-5	7.24	5092	-0.065	0.034	0.007	0.011	0.000000	0.000000	-1812.85	171.30
2	FID	ACIS-S-6	7.35	5094	0.006	-0.009	0.008	0.012	0.000000	0.000000	401.49	815.41
3	GUIDE	671758624	9.19	10183	0.069	0.162	0.072	0.117	280.543949	-5.927318	-1420.05	-1305.66
4	GUIDE	671759144	8.66	10183	-0.055	-0.252	0.067	0.111	279.658906	-5.990264	-607.36	1765.10
5	GUIDE	671762280	8.87	10183	0.048	-0.107	0.072	0.118	280.028746	-5.773981	-299.62	260.20
6	GUIDE	671760936	9.35	10170	-0.113	-0.075	0.084	0.139	279.764572	-5.712435	216.58	1083.72
7	GUIDE	671758792	8.90	10182	0.055	0.277	0.077	0.126	280.738640	-5.820907	-1284.44	-2089.32

## 2.4 Star Slots

### 2.4.1 Slot 3

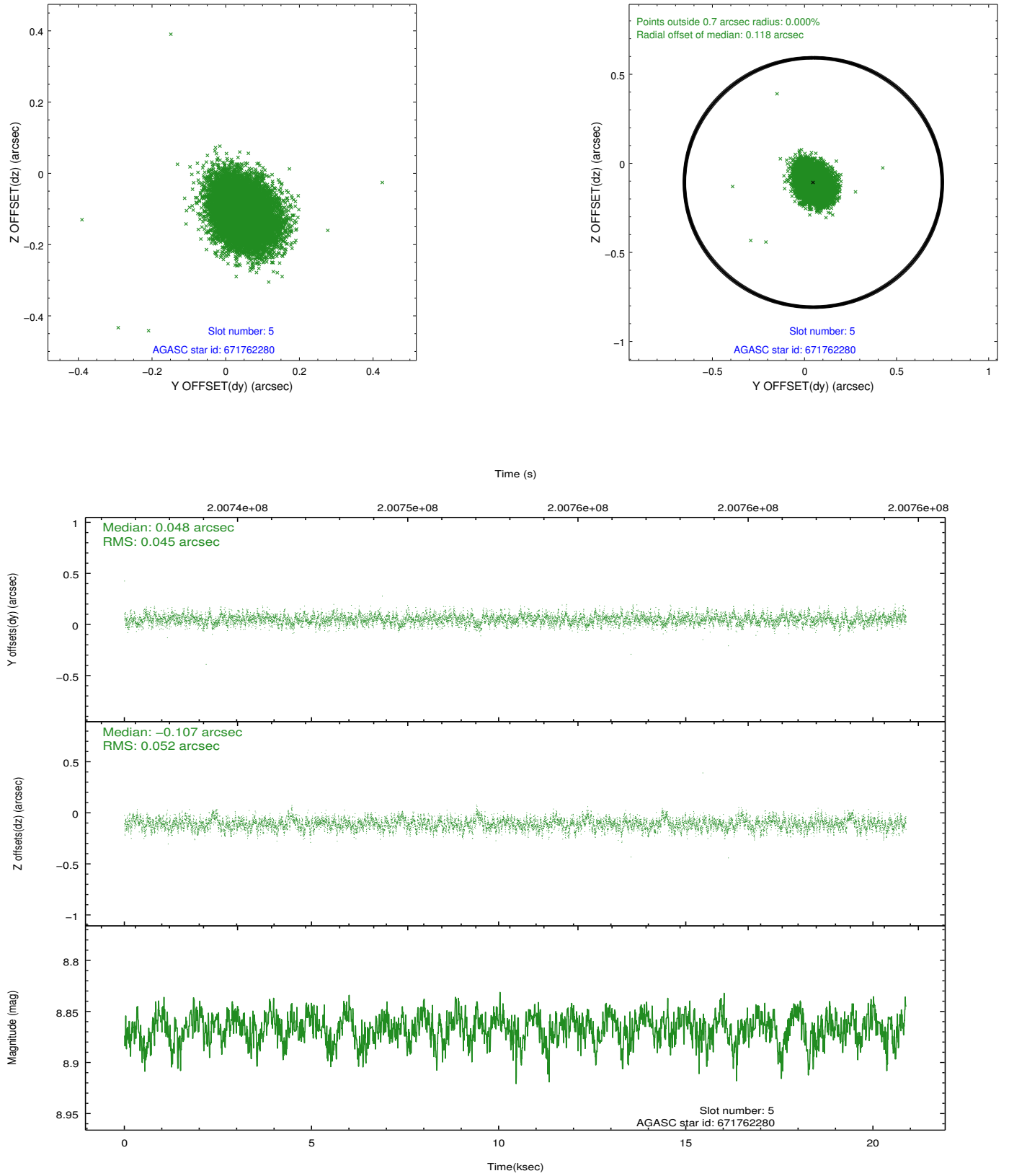


## 2.4.2 Slot 4

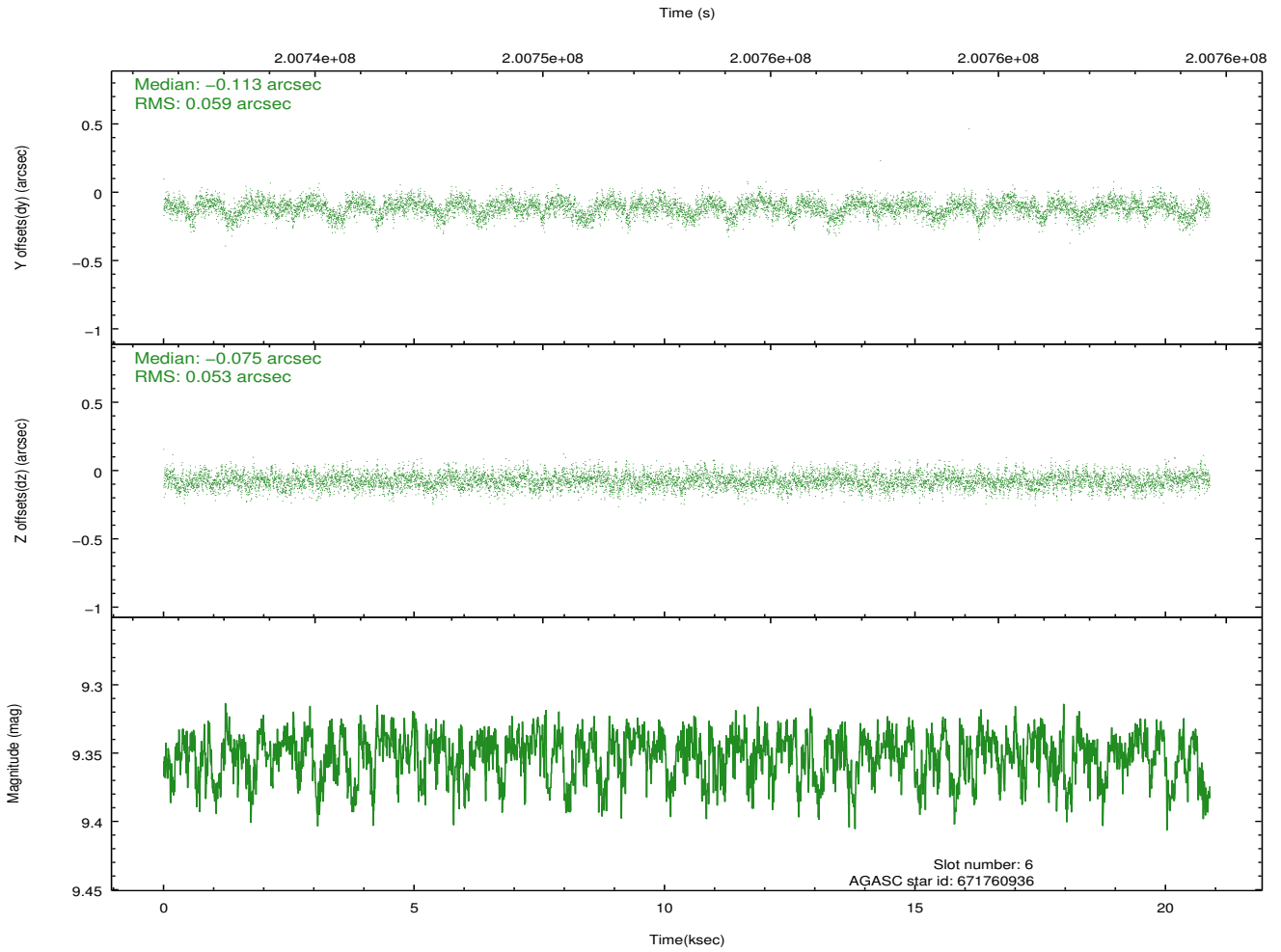
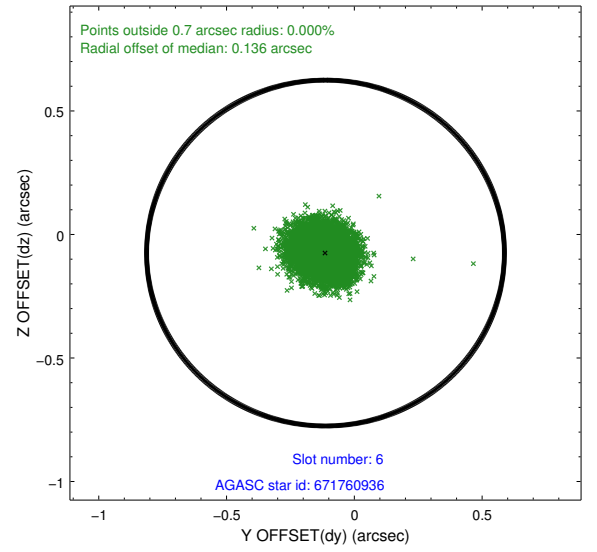
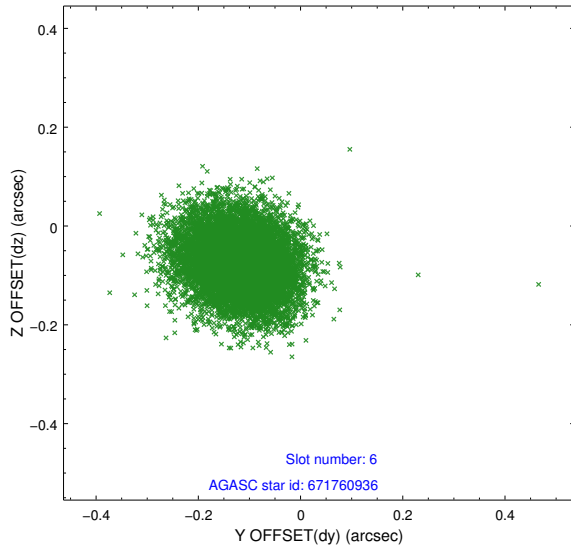




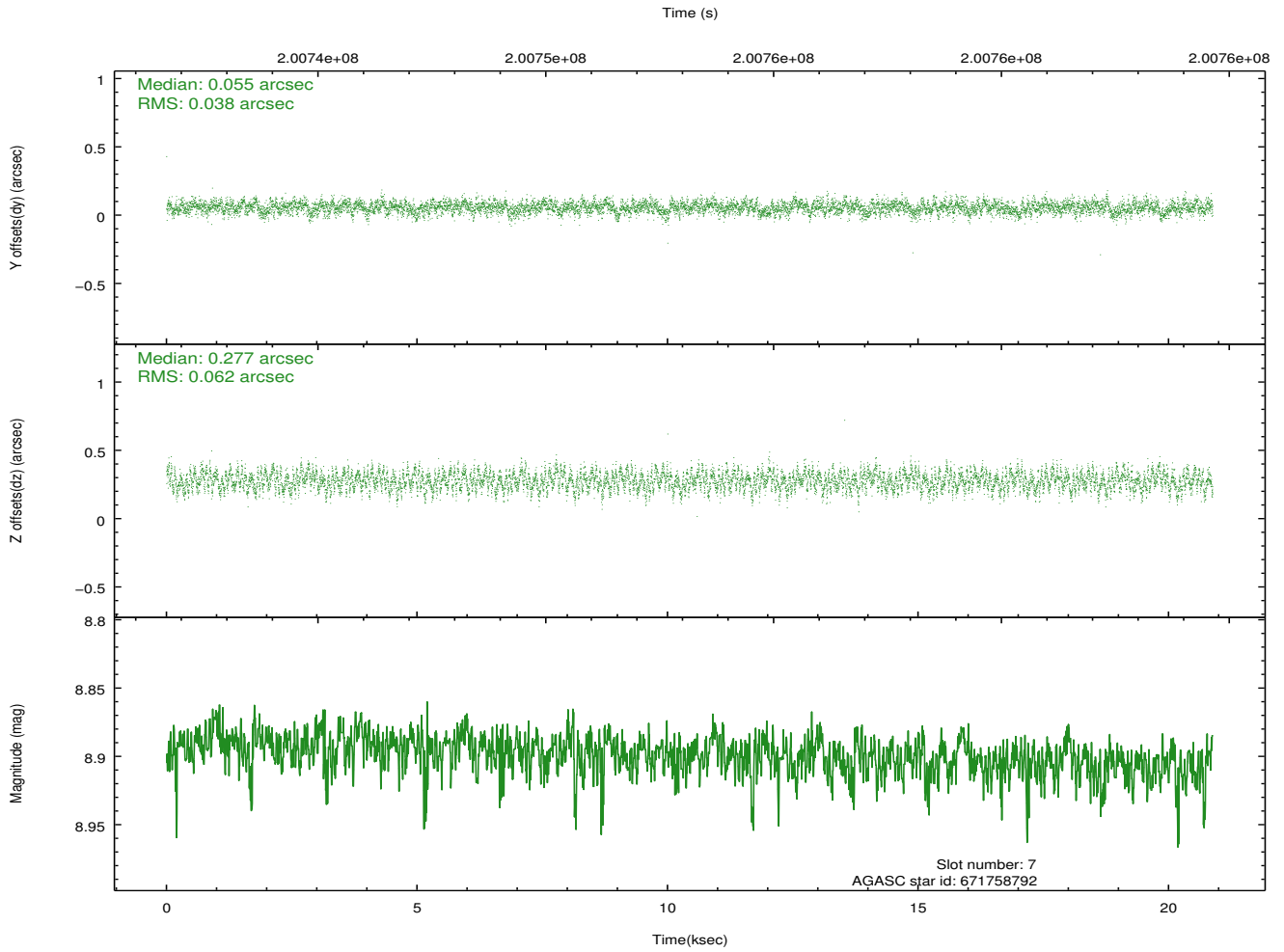
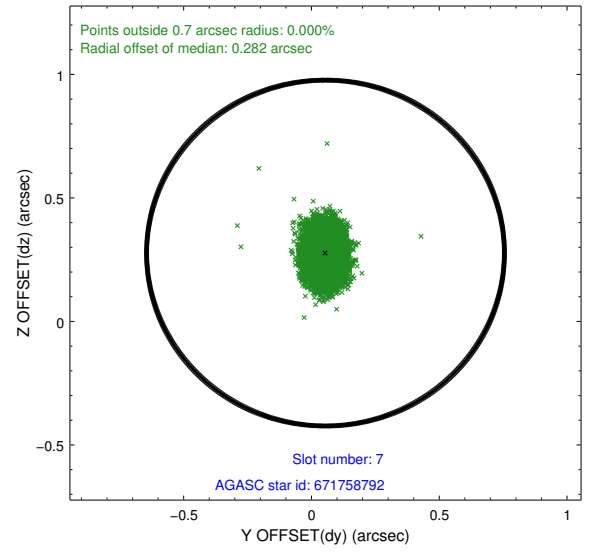
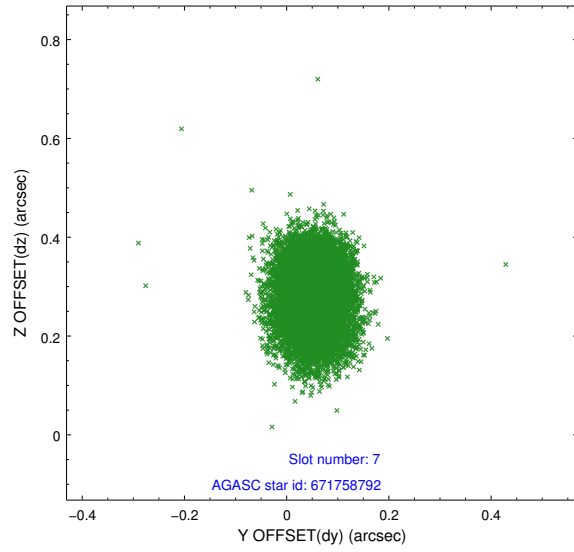
### 2.4.3 Slot 5



## 2.4.4 Slot 6

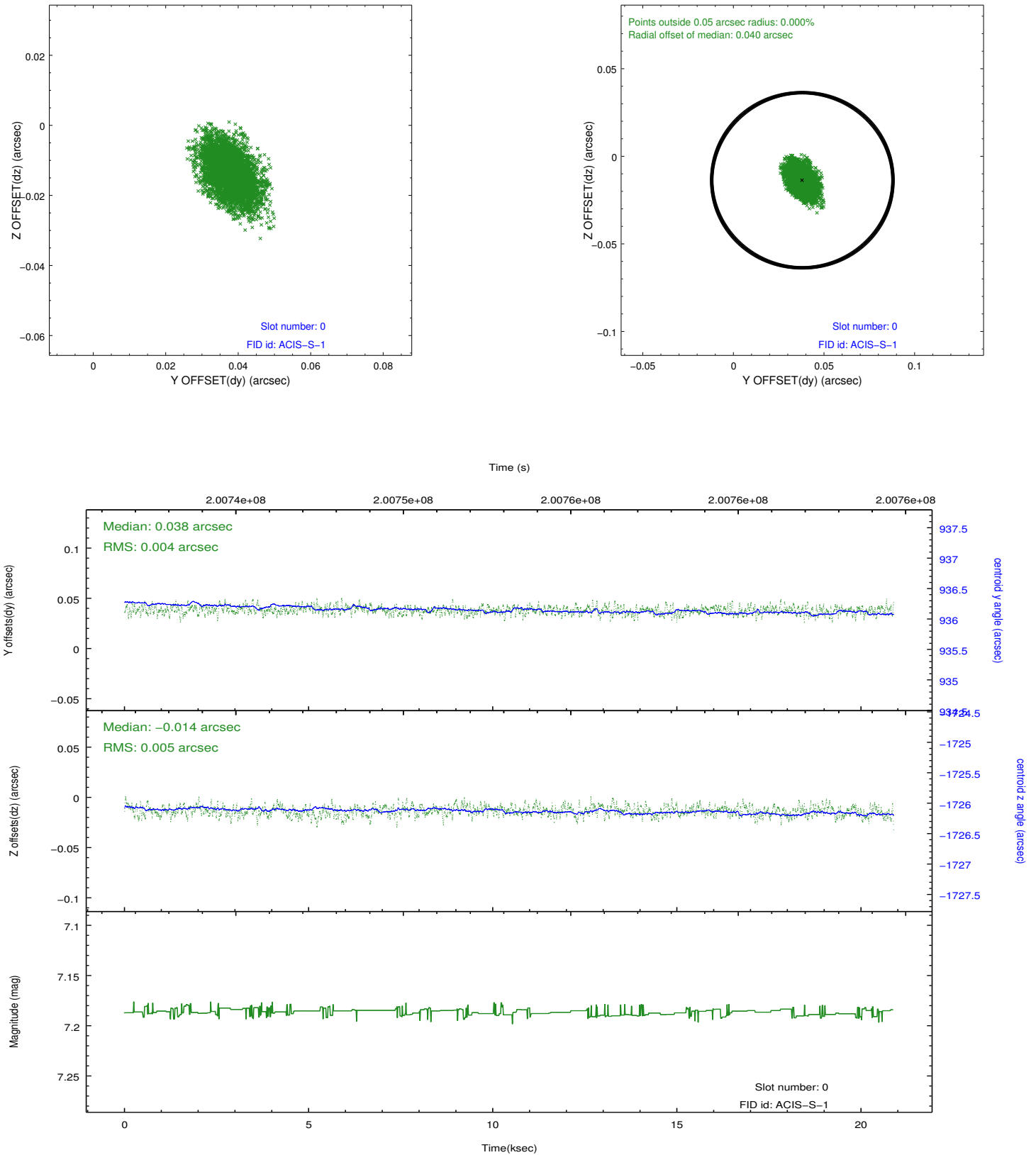


## 2.4.5 Slot 7

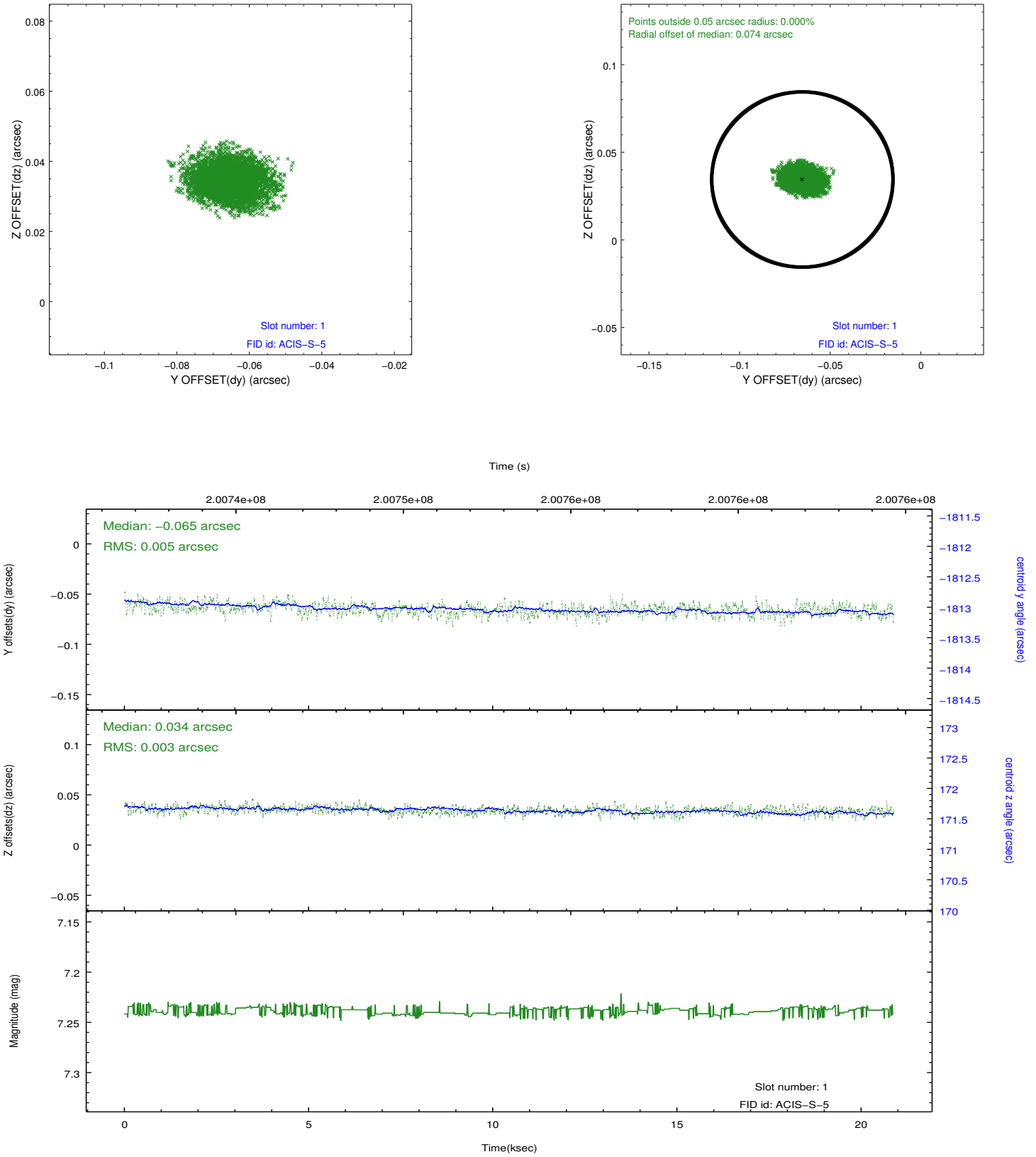


## 2.5 FID Slots

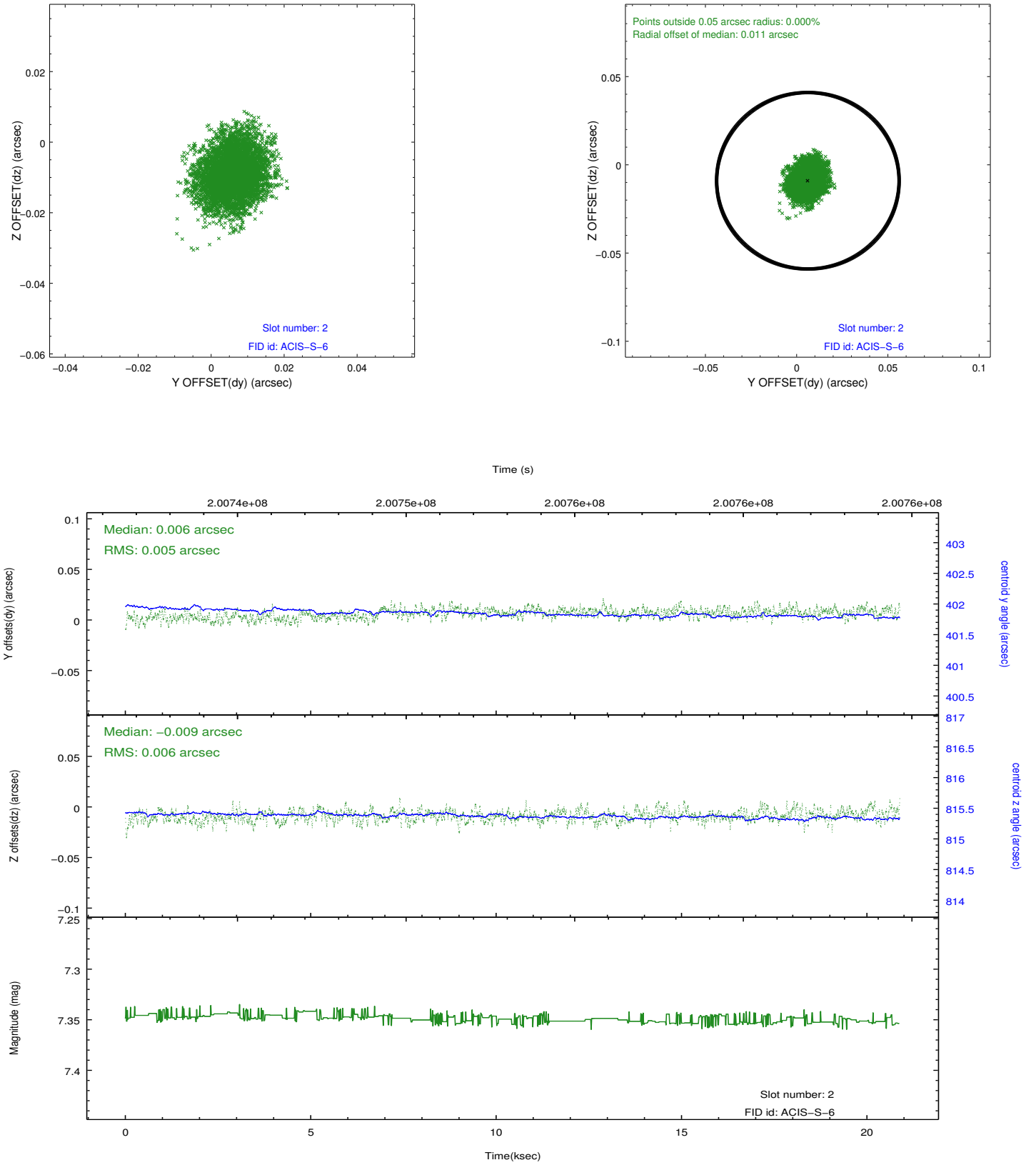
### 2.5.1 Slot 0



## 2.5.2 Slot 1



### 2.5.3 Slot 2



## A Summary

### A.1 Status

V&V Scientist	Jen Lauer
V&V Date (YYYY-MM-DD)	2012.12.17
V&V Edition	1
V&V Disposition and Status	OK
V&V Charge Time	20.361

### A.2 Comments