

V&V Reference Report

L2 ASCDS Version : 7.6.7.2

Observation 4649 - L2 Version 001
Chandra X-Ray Center

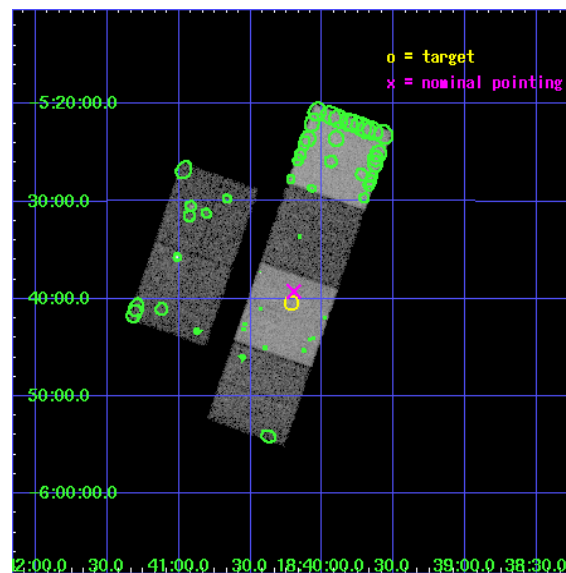
L2 Processing Date : May 18 2006

Contents

1	Front	2
2	OBI	3
2.1	OBI	3
2.1.1	Images	3
2.1.2	Bias	3
2.1.3	Parameters	4
2.1.4	Events	4
2.2	Compared Parameters	5
2.3	Aspect	6
2.4	Star Slots	9
2.4.1	Slot 3	9
2.4.2	Slot 4	10
2.4.3	Slot 5	11
2.4.4	Slot 6	12
2.4.5	Slot 7	13
2.5	FID Slots	14
2.5.1	Slot 0	14
2.5.2	Slot 1	15
2.5.3	Slot 2	16
3	Point Sources	17
A	Summary	18
A.1	Status	18
A.2	Comments	18

1 Front

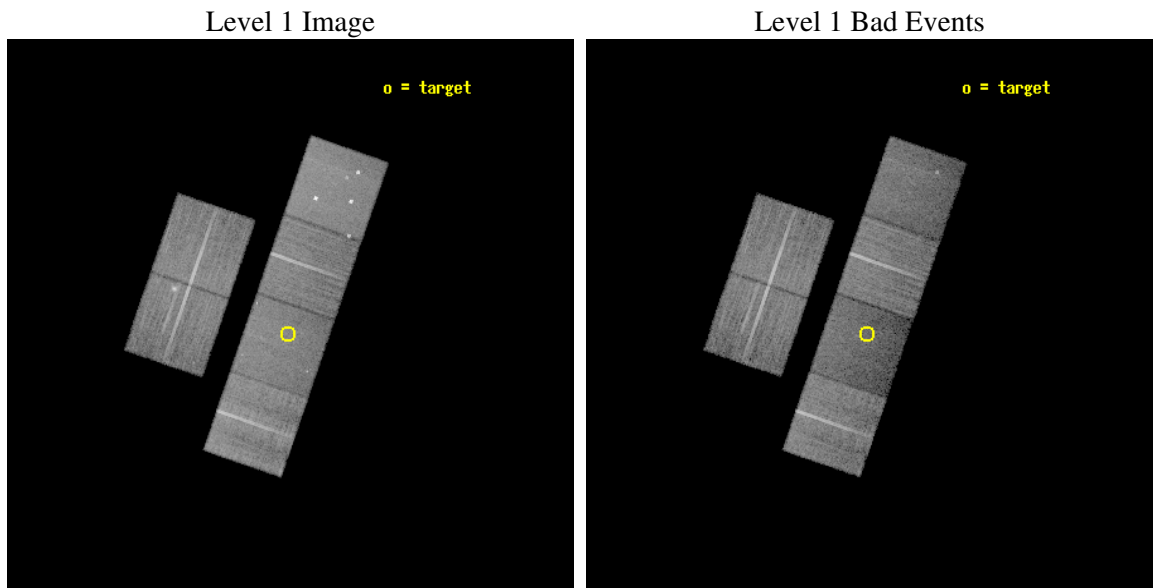
seq_num	500468
obs_id	4649
title	G26.6-0.1: A New, Nearby, Crab-like SNR in a Star Formation Region
observer	Prof. David Helfand
object	G26.6-0.1
dtcycle	0
cycle	P
ra_targ	280.054583
dec_targ	-5.674444
ra_nom	280.04943145101
dec_nom	-5.6543300595979
roll_nom	109.07419713175
revision	2
ontime	20358.399924159
livetime	20100.609605963
ontime2	20358.399924159
ontime3	20355.158943862
ontime5	20358.399924159
ontime6	20358.399924159
ontime7	20358.399924159
ontime8	20358.399924159
l2events	168597



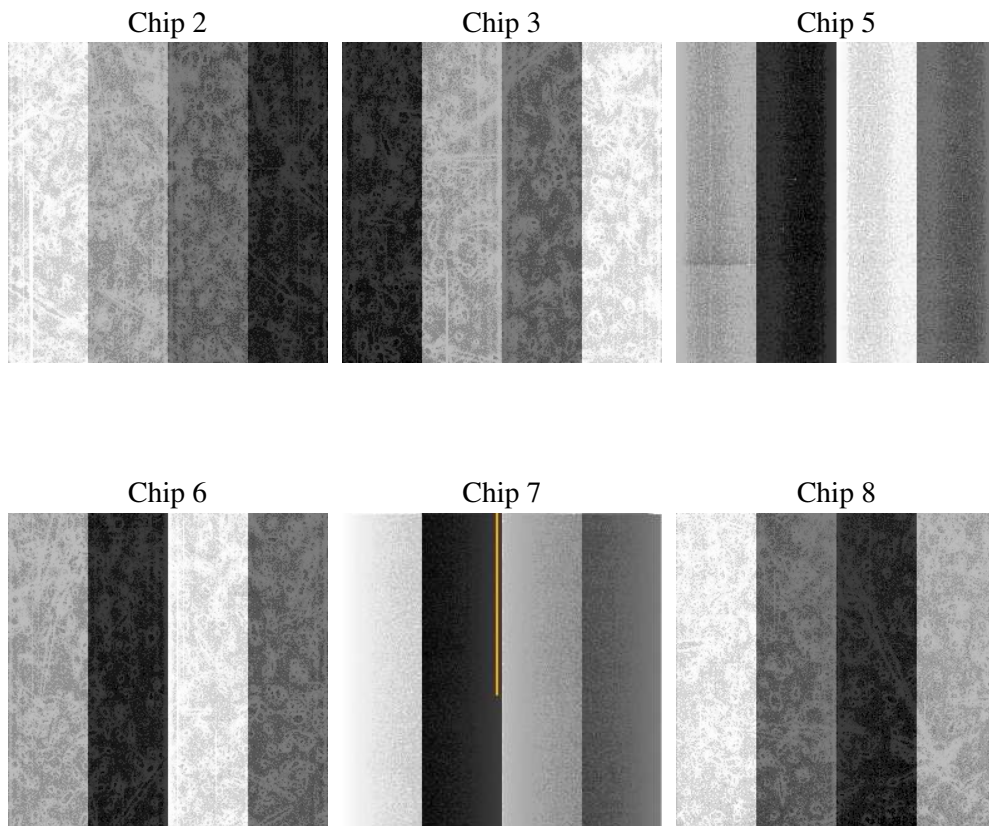
2 OBI

2.1 OBI

2.1.1 Images



2.1.2 Bias



2.1.3 Parameters

obi_num	0
ascdsver	7.6.7.2
caldsver	3.2.2
date	2006-05-19T00:14:36
revision	2

sched_exp_time	20400.000000
ontime	20363.255379081
ontime2	20363.255359143
ontime3	20360.014378846
ontime5	20363.255379081
ontime6	20363.255379081
ontime7	20363.255379081
ontime8	20366.496399164
l1events	757319

2.1.4 Events

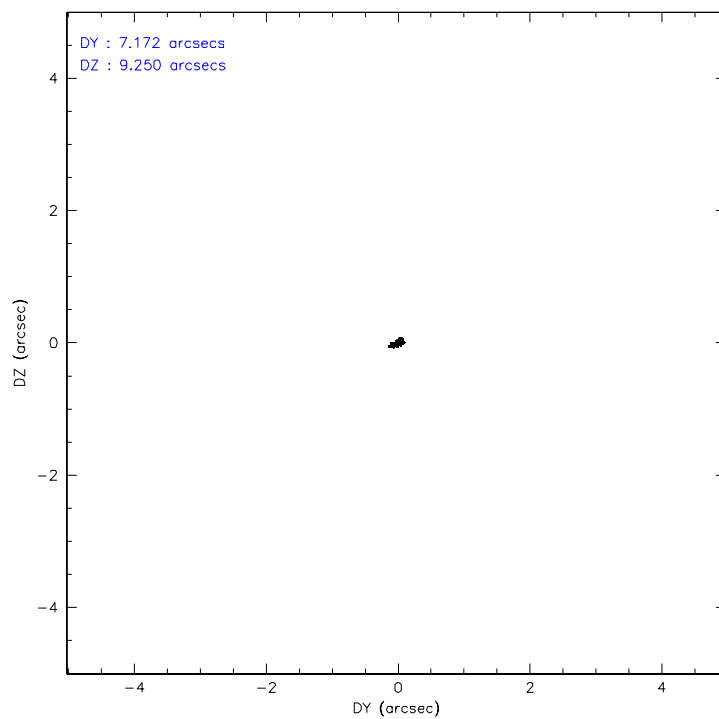
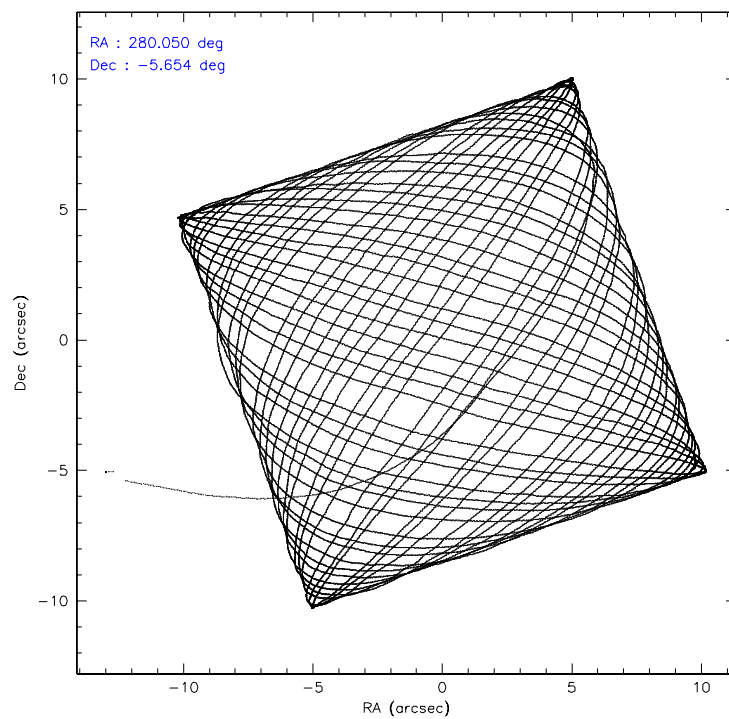
	ccd 2	ccd 3	ccd 5	ccd 6	ccd 7	ccd 8
level 1 events	125059	115834	146579	115796	111642	142409
rejected events	111854	101329	68271	102221	58188	108335
rejected %	89%	87%	46%	88%	52%	76%

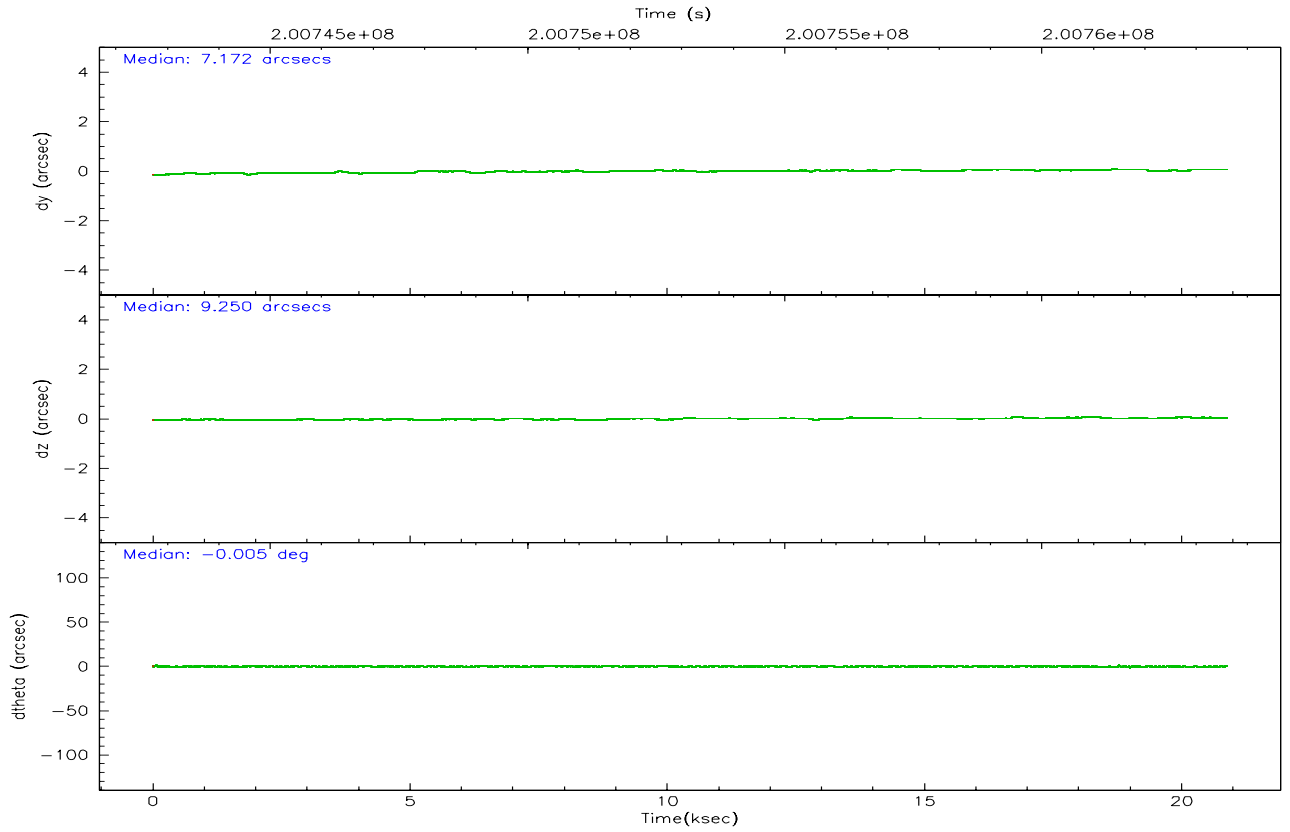
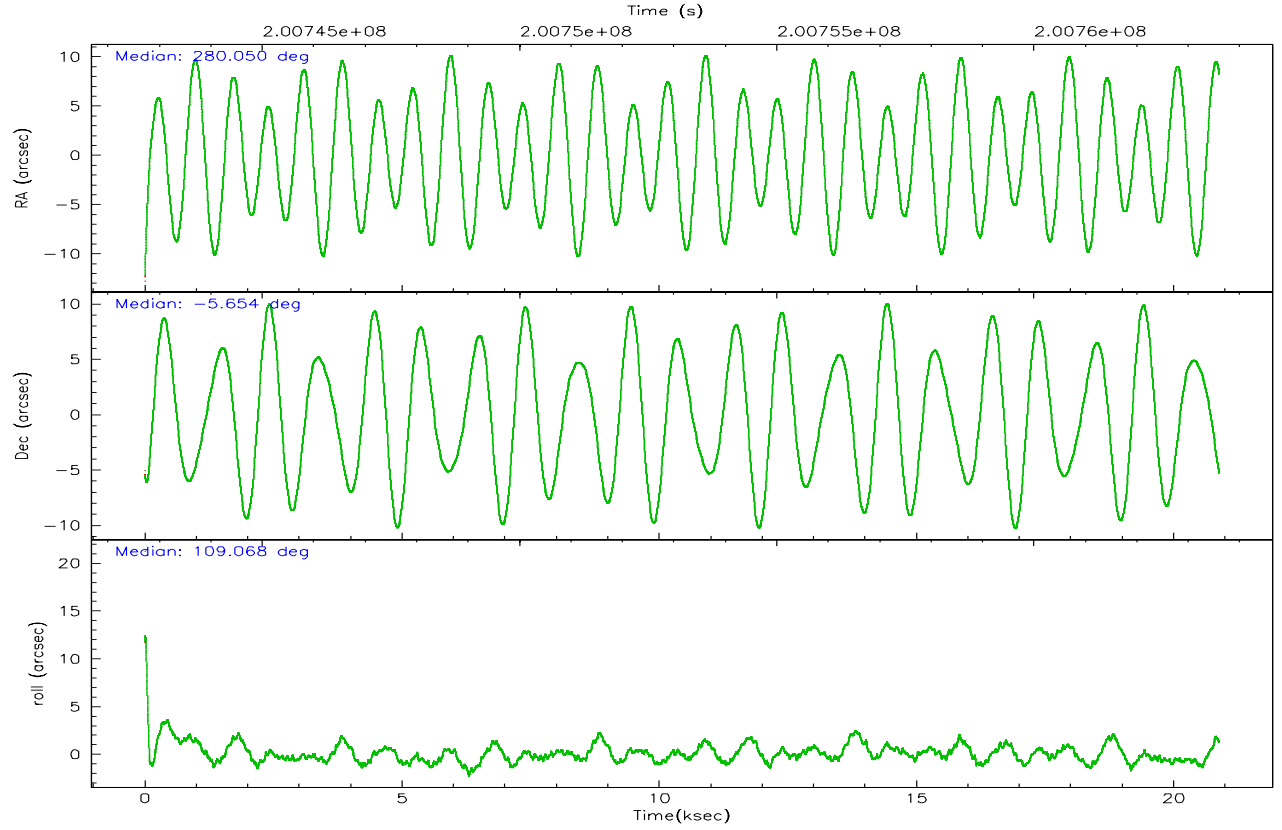
	ccd 2	ccd 3	ccd 5	ccd 6	ccd 7	ccd 8
grade 0 events	5880	6944	12357	5742	4134	11314
	4%	5%	8%	4%	3%	7%
grade 1 events	75	74	398	58	52	110
	0%	0%	0%	0%	0%	0%
grade 2 events	2829	2692	23024	2755	13991	7442
	2%	2%	15%	2%	12%	5%
grade 3 events	1254	1434	2163	1419	3451	3500
	1%	1%	1%	1%	3%	2%
grade 4 events	1289	1344	1997	1338	3516	3452
	1%	1%	1%	1%	3%	2%
grade 5 events	3316	3725	7746	3999	8664	5702
	2%	3%	5%	3%	7%	4%
grade 6 events	1954	2092	38786	2322	28368	8371
	1%	1%	26%	2%	25%	5%
grade 7 events	108462	97529	60108	98163	49466	102518
	86%	84%	41%	84%	44%	71%

2.2 Compared Parameters

Parameter	Planned	Actual	Parameter	Planned	Actual
Instrument	ACIS	ACIS	Obspar format version number	6	6
Detector	ACIS-235678	ACIS-235678	Obspar file type	PREDICTED	ACTUAL
Grating	NONE	NONE	Obspar update status	NONE	UPDATED
Data mode	VFAINT	VFAINT	On-chip summing requested	N	N
Observation mode	POINTING	POINTING	Subarray requested	NONE	NONE
Pointing RA	280.070350	280.0494314510074	Alternating exposures requested	N	N
Pointing Dec	-5.671888	-5.654330059597876	Primary exposure time	0.000000	3.2
Pointing Roll	108.919629	109.074197131751			
SIM focus pos (mm)	-0.684267	-0.6828225247311905			
SIM defocus (mm)	0	0.001444936568705701			
SIM translation stage pos (mm)	-190.132523	-190.1400660498719			
SIM translation stage offset (mm)	0	0.00754346686406393			
Observation start time	200743206.184000	200742098.19946			
Observation start date	2004-05-12T09:59:02	2004-05-12T09:41:38			
Observation end time	200763606.184000	200764934.17546			
Observation end date	2004-05-12T15:39:02	2004-05-12T16:02:14			
Read mode	TIMED	TIMED			

2.3 Aspect



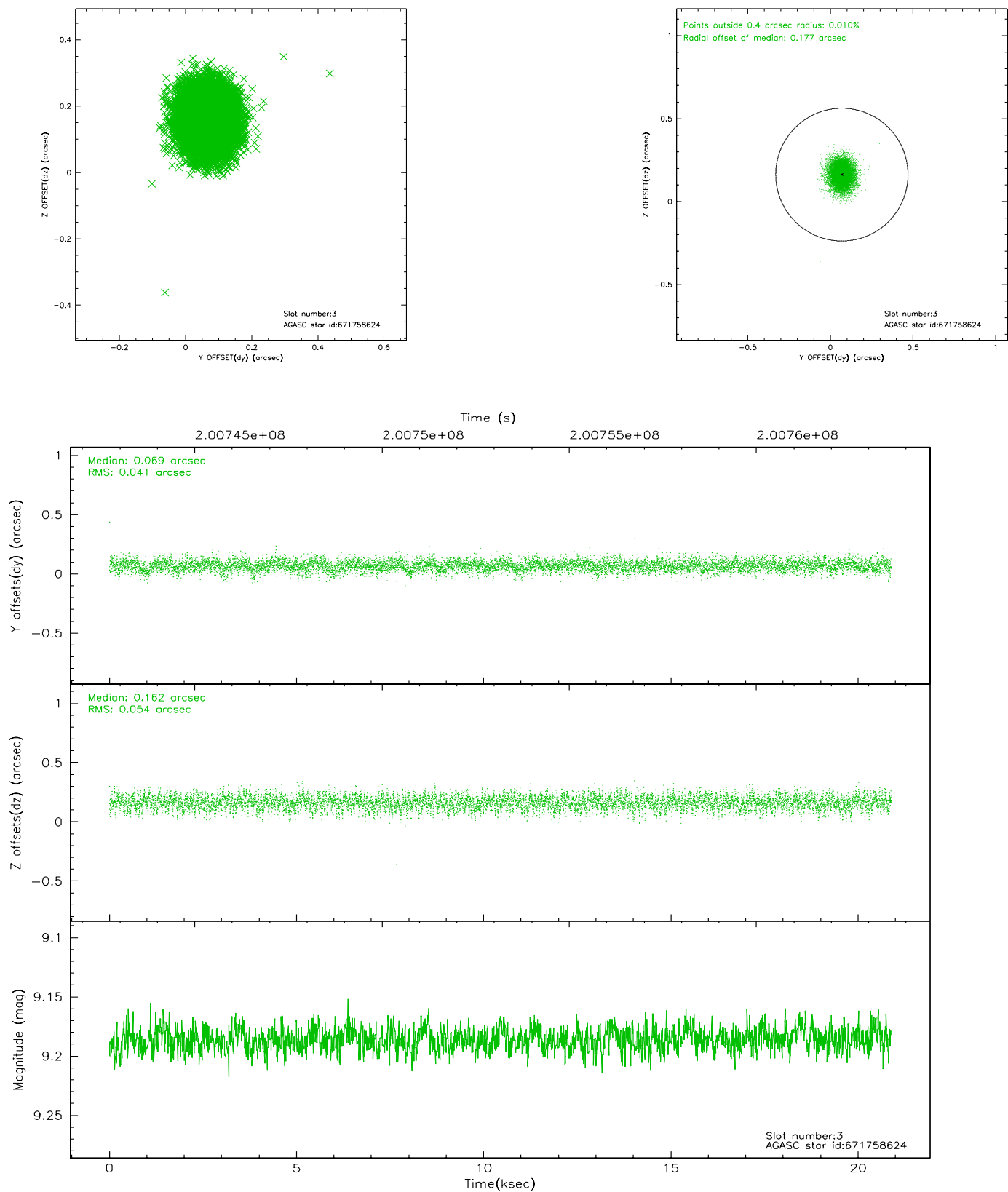


Slot Statistics

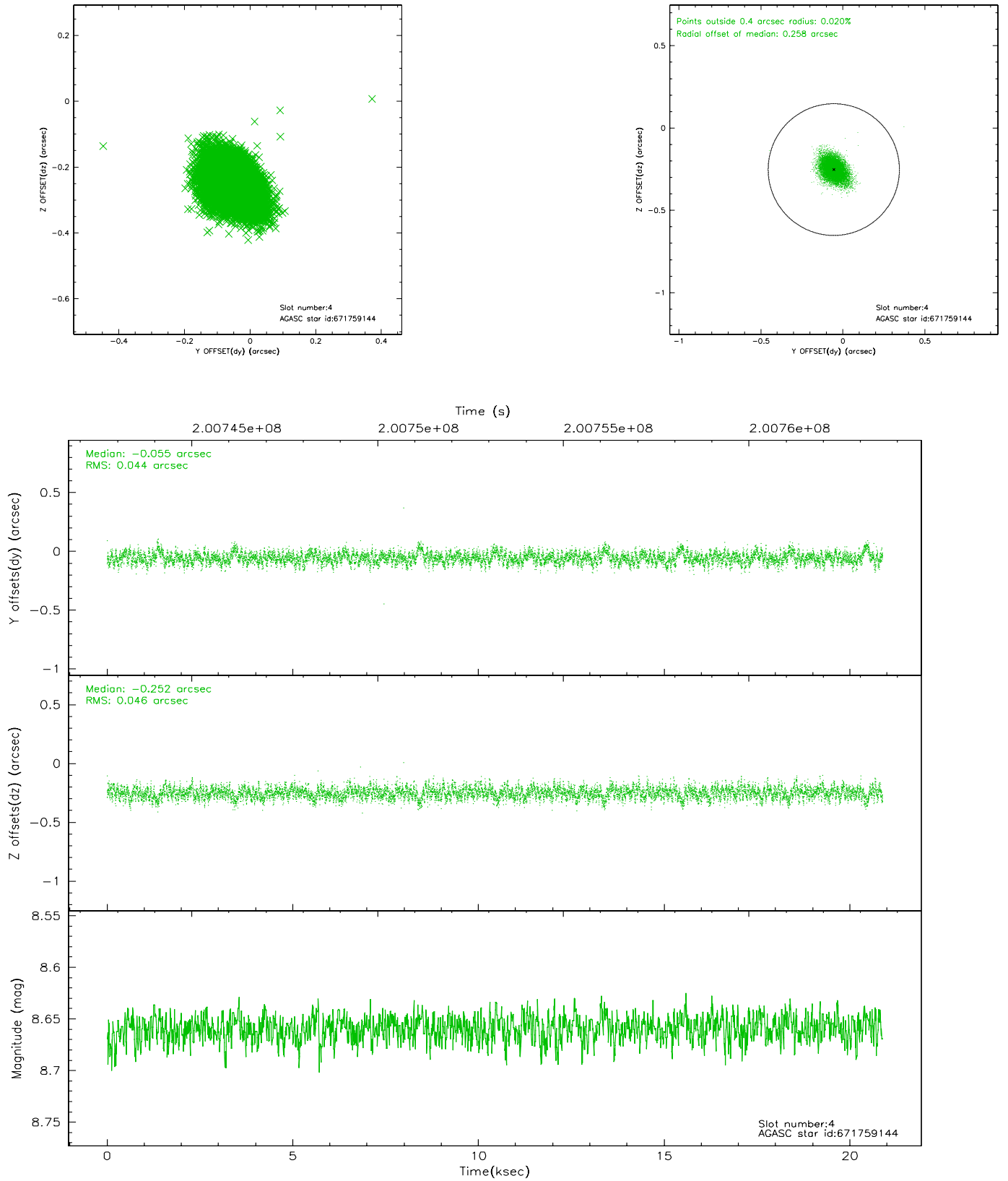
slot	status	id	mag	n_pts	med_dy	med_dz	dr1	dr2	ra	dec	mean_y	mean_z
0	FID	ACIS-S-1	7.19	5094	0.018	0.014	0.006	0.011	0.000000	0.000000	936.13	-1726.09
1	FID	ACIS-S-5	7.24	5092	-0.035	0.027	0.007	0.011	0.000000	0.000000	-1812.82	171.30
2	FID	ACIS-S-6	7.35	5094	-0.004	-0.029	0.008	0.013	0.000000	0.000000	401.48	815.40
3	GUIDE	671758624	9.19	10183	0.069	0.162	0.072	0.117	280.543949	-5.927318	-1420.05	-1305.66
4	GUIDE	671759144	8.66	10183	-0.055	-0.252	0.067	0.111	279.658906	-5.990264	-607.36	1765.10
5	GUIDE	671762280	8.87	10183	0.048	-0.107	0.072	0.118	280.028746	-5.773981	-299.62	260.20
6	GUIDE	671760936	9.35	10170	-0.113	-0.075	0.084	0.139	279.764572	-5.712435	216.58	1083.72
7	GUIDE	671758792	8.90	10182	0.055	0.277	0.077	0.126	280.738640	-5.820907	-1284.44	-2089.32

2.4 Star Slots

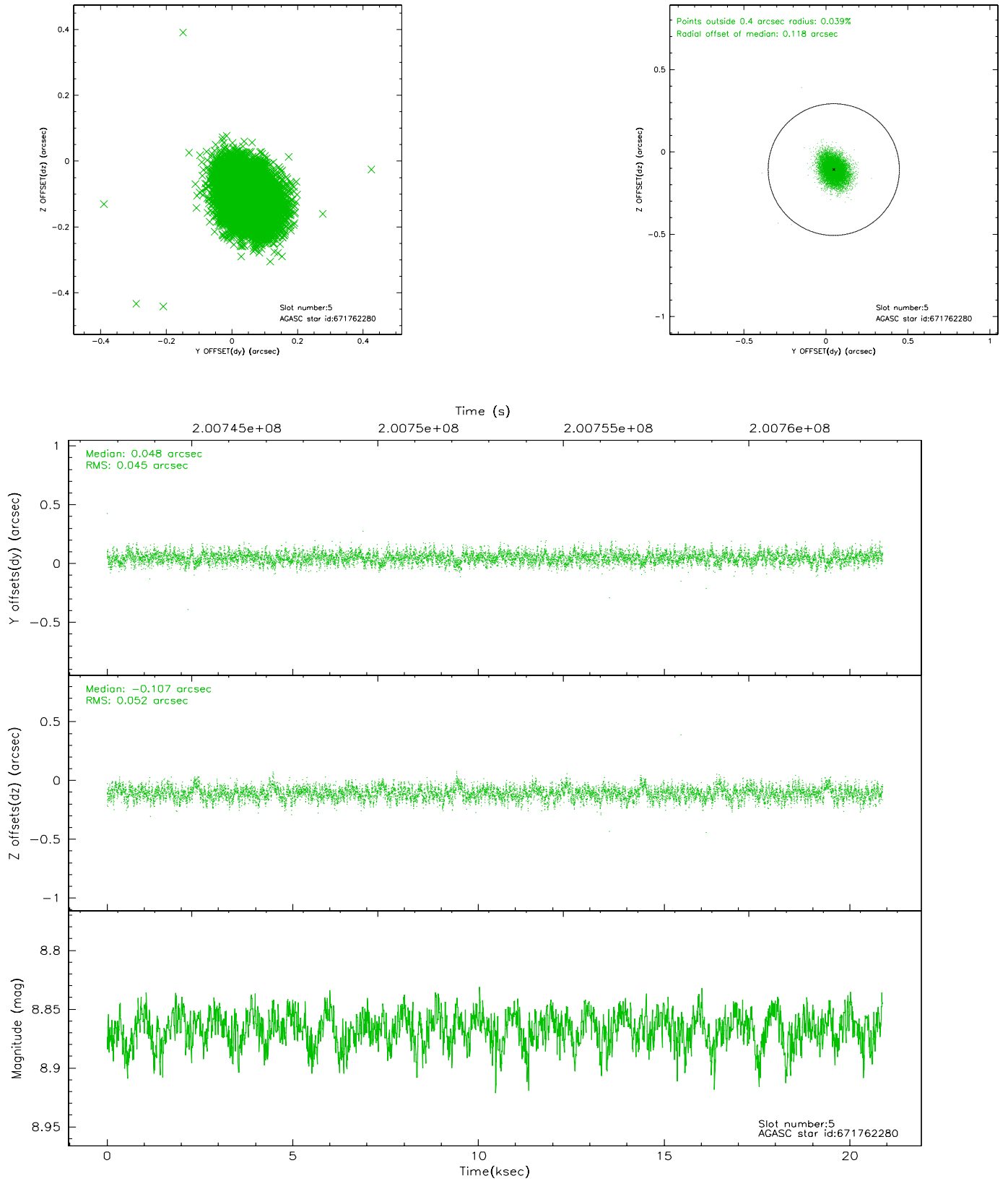
2.4.1 Slot 3



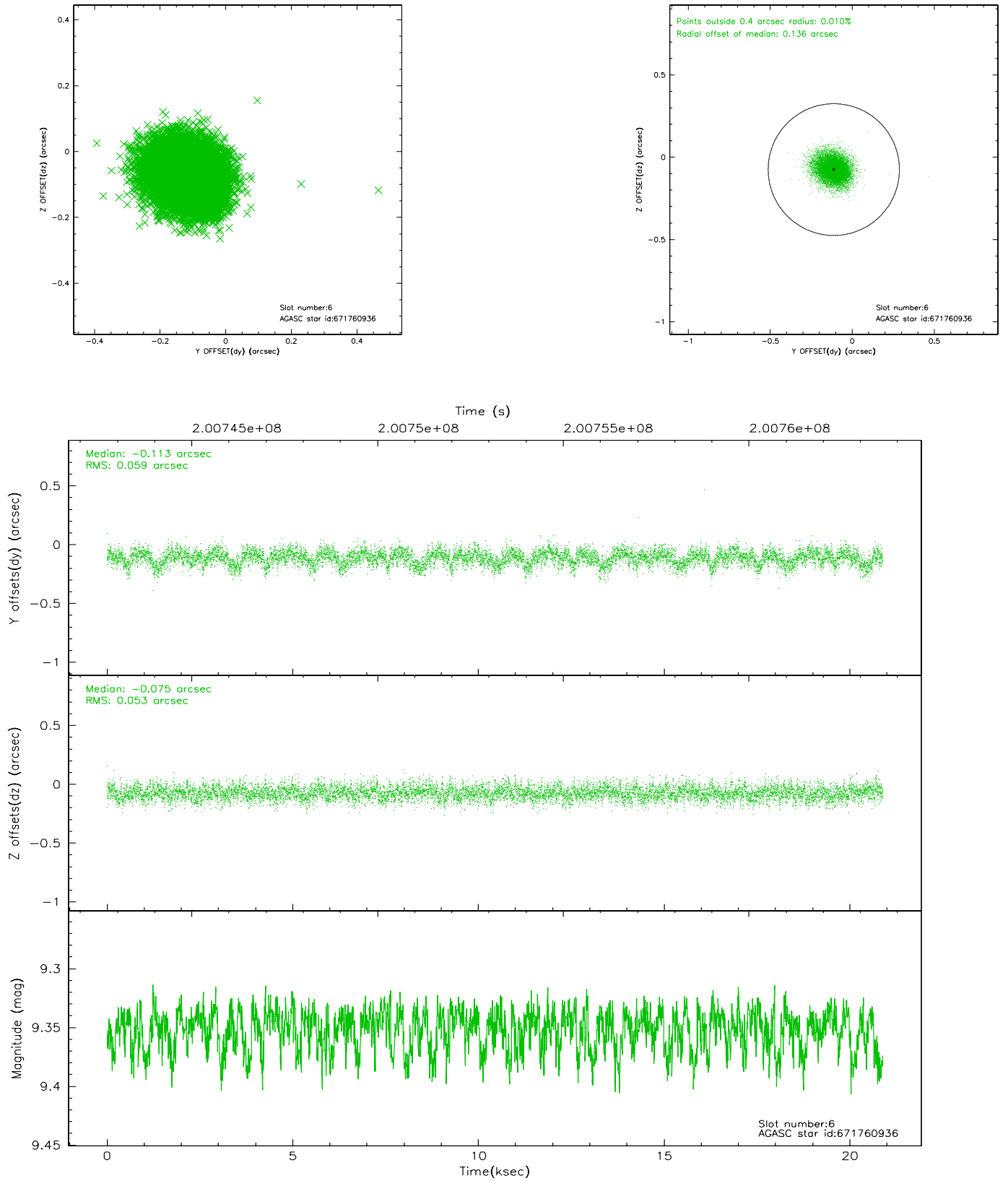
2.4.2 Slot 4



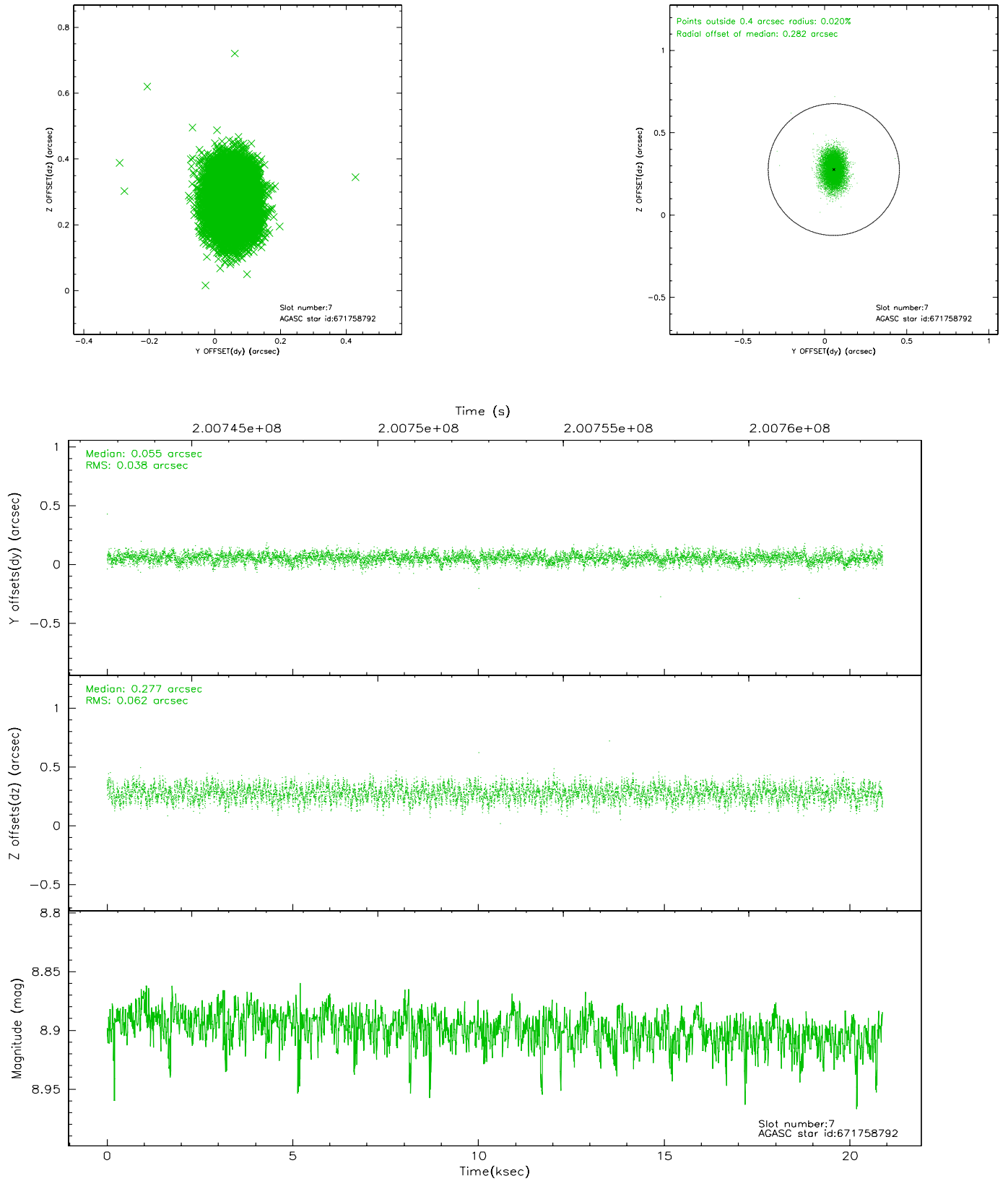
2.4.3 Slot 5



2.4.4 Slot 6

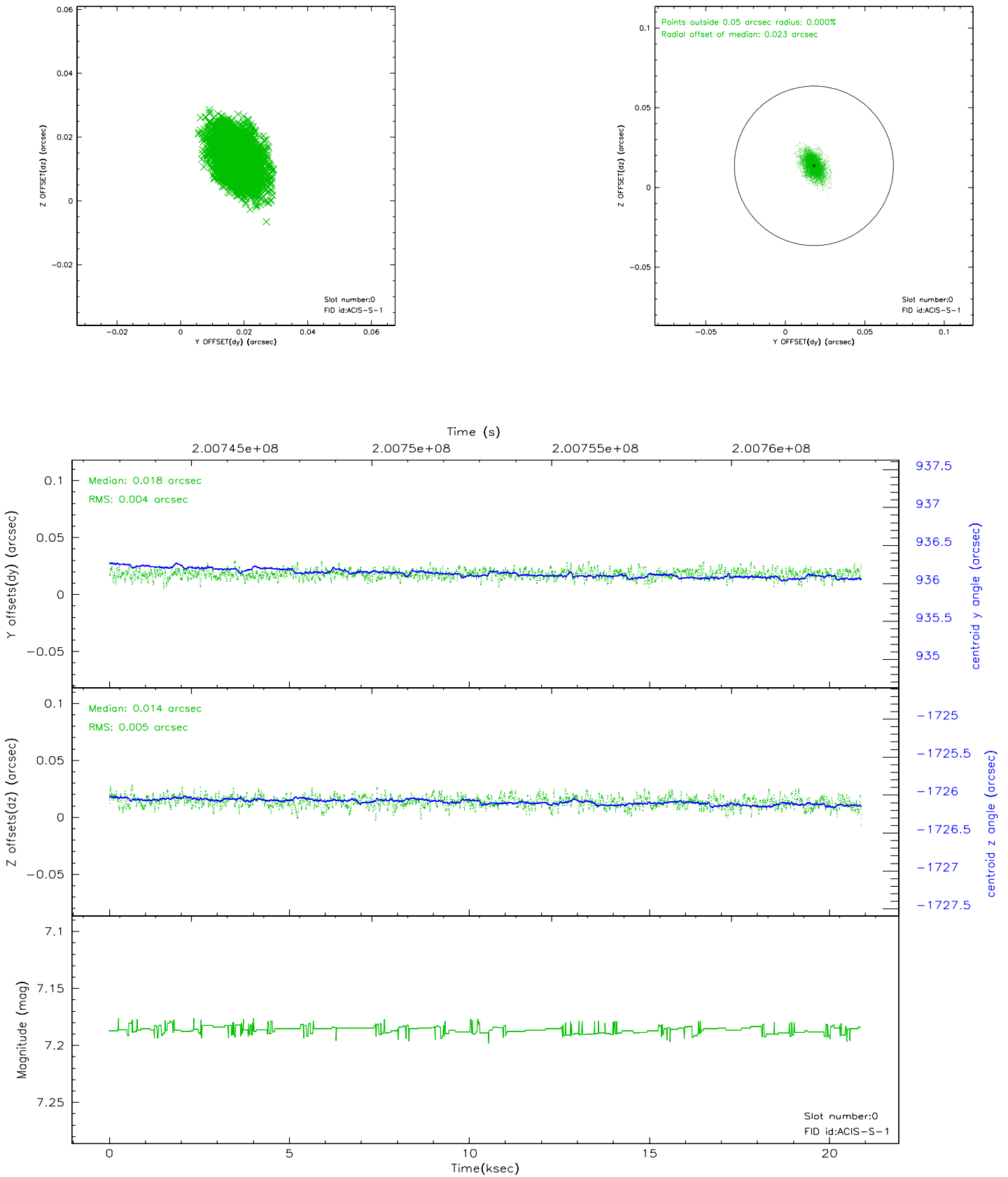


2.4.5 Slot 7

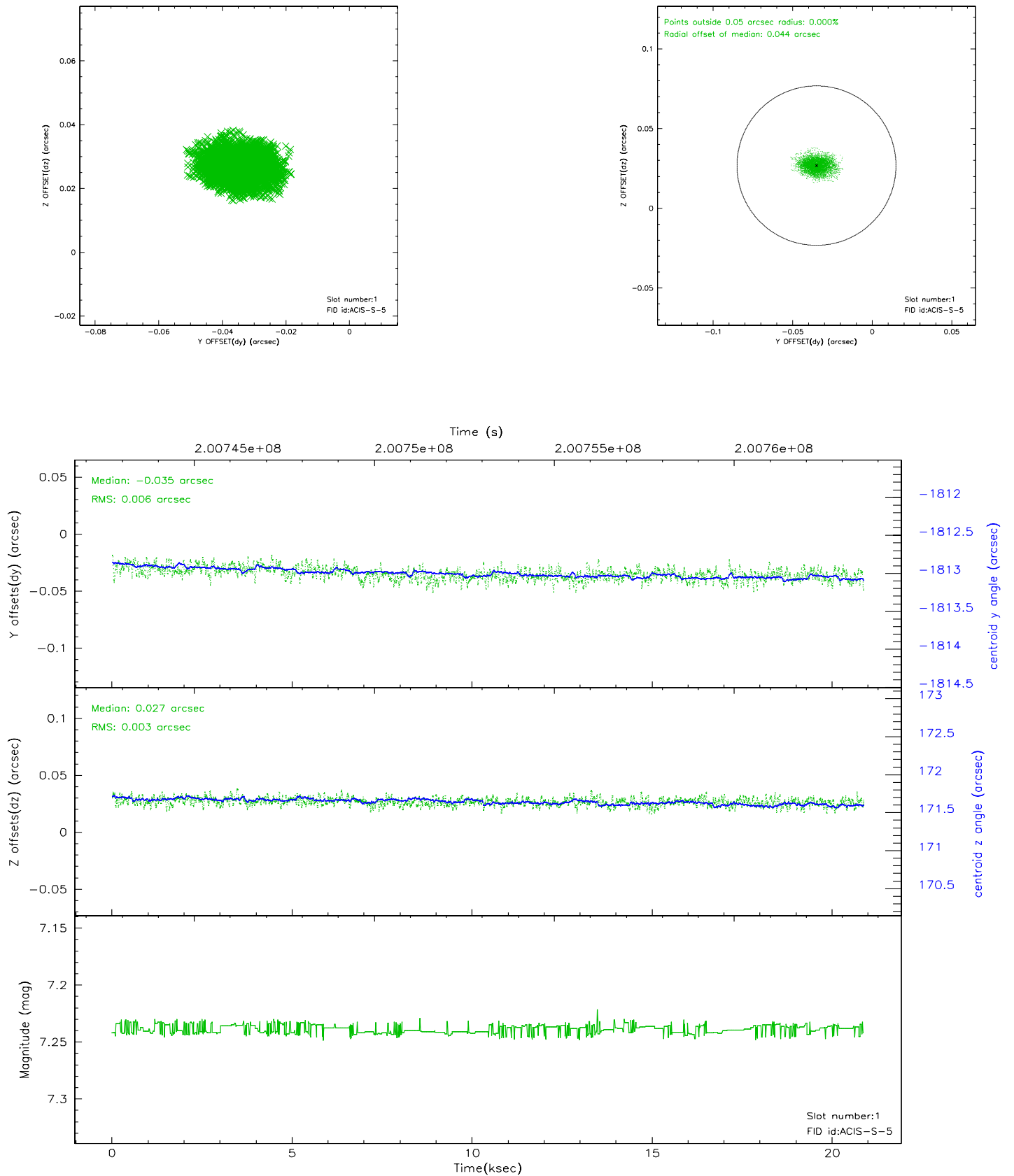


2.5 FID Slots

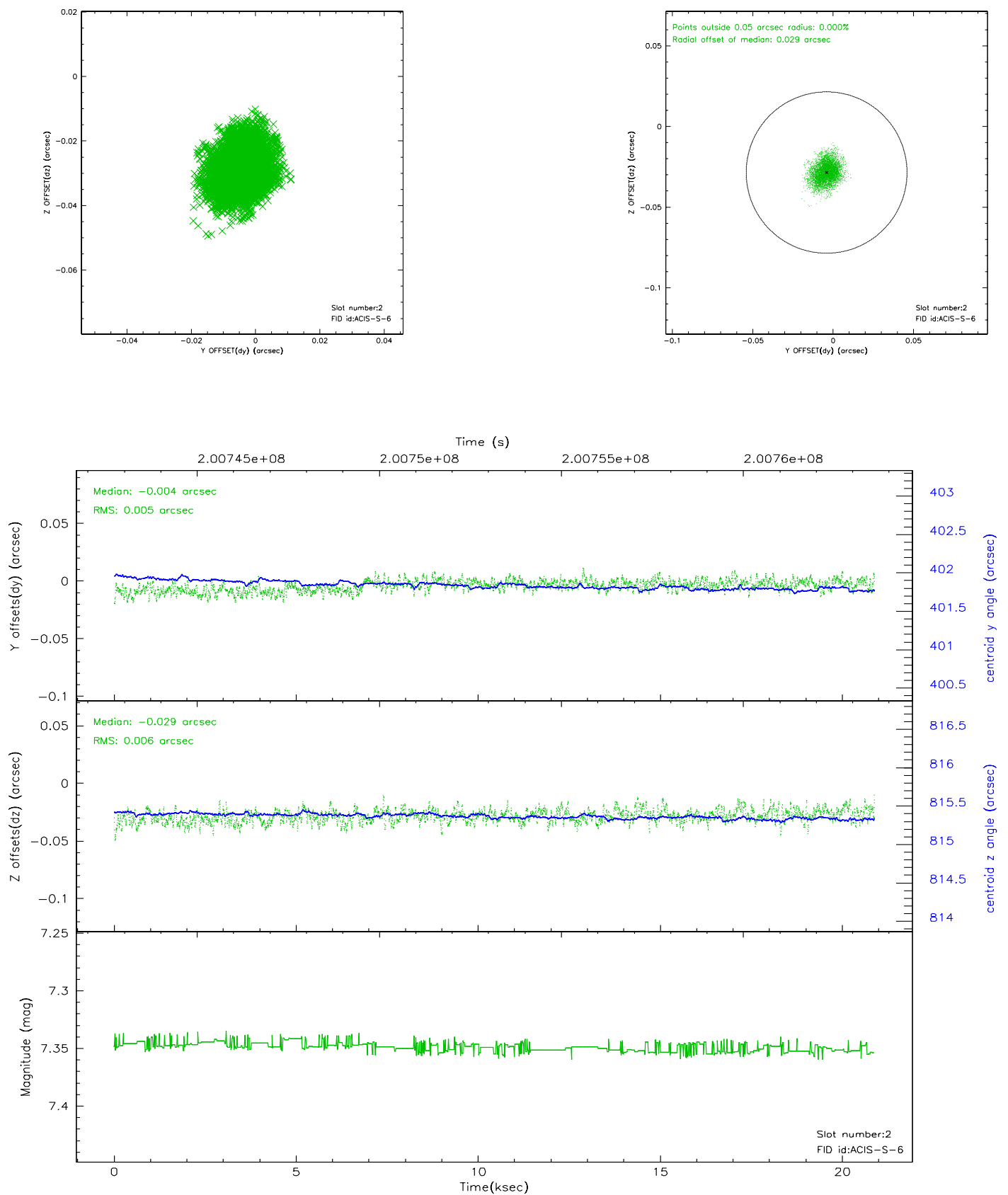
2.5.1 Slot 0



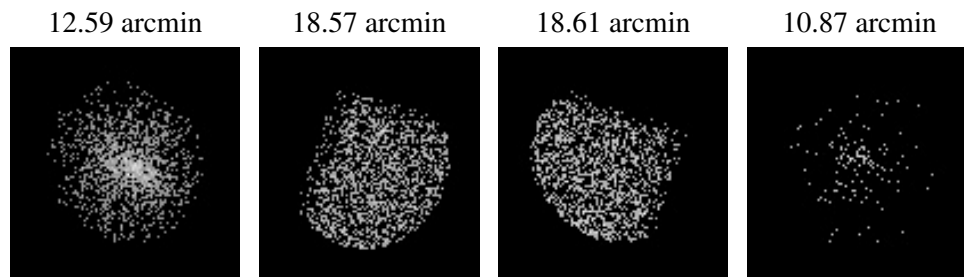
2.5.2 Slot 1



2.5.3 Slot 2



3 Point Sources



A Summary

A.1 Status

V&V Scientist	Beth Sundheim
V&V Date (YYYY-MM-DD)	2006.05.19
V&V Edition	1
V&V Disposition and Status	OK
V&V Charge Time	20.361

A.2 Comments