

# V&V Reference Report

## L2 ASCDS Version : 7.6.7.2

Observation 4638 - L2 Version 001  
Chandra X-Ray Center

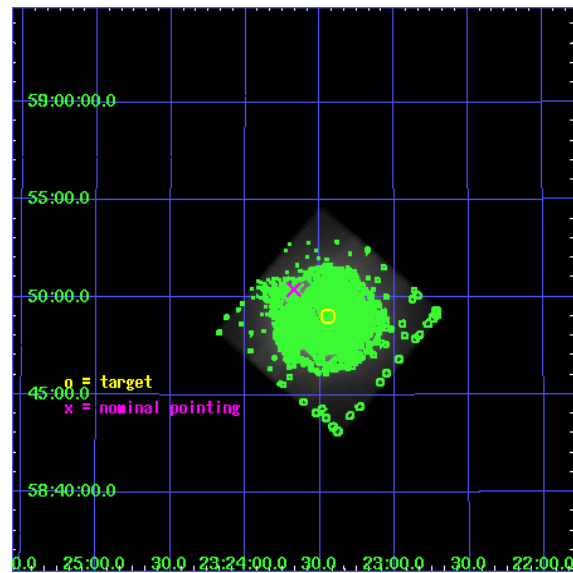
L2 Processing Date : May 27 2006

## Contents

<b>1</b>	<b>Front</b>	<b>2</b>
<b>2</b>	<b>OBI</b>	<b>3</b>
2.1	OBI . . . . .	3
2.1.1	Images . . . . .	3
2.1.2	Parameters . . . . .	4
2.1.3	Events . . . . .	4
2.2	Compared Parameters . . . . .	5
2.3	Aspect . . . . .	6
2.4	Star Slots . . . . .	9
2.4.1	Slot 3 . . . . .	9
2.4.2	Slot 4 . . . . .	10
2.4.3	Slot 5 . . . . .	11
2.4.4	Slot 6 . . . . .	12
2.4.5	Slot 7 . . . . .	13
2.5	FID Slots . . . . .	14
2.5.1	Slot 0 . . . . .	14
2.5.2	Slot 1 . . . . .	15
2.5.3	Slot 2 . . . . .	16
<b>3</b>	<b>Point Sources</b>	<b>17</b>
<b>A</b>	<b>Summary</b>	<b>18</b>
A.1	Status . . . . .	18
A.2	Comments . . . . .	18

# 1 Front

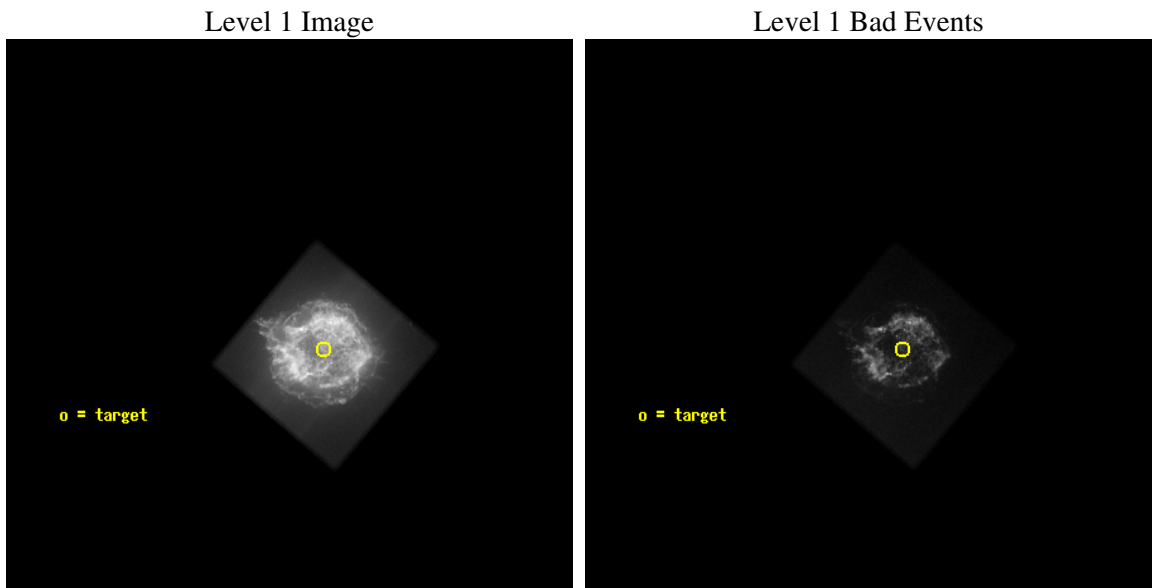
seq_num	500459
obs_id	4638
title	The Cassiopeia A Explosion: Getting at the Core Issues
observer	Dr Una Hwang
object	Cassiopeia A
dtcycle	0
cycle	P
ra_targ	350.86125
dec_targ	58.8175
ra_nom	350.91843664599
dec_nom	58.840324072004
roll_nom	40.327304339928
revision	2
ontime	166782.0
livetime	164531.21300608
ontime7	166782.0
l2events	49587855



## 2 OBI

### 2.1 OBI

#### 2.1.1 Images



### 2.1.2 Parameters

obi_num	0
ascdsver	7.6.7.2
caldsver	3.2.2
date	2006-05-26T18:01:11
revision	2

sched_exp_time	166141.910000
ontime	166786.78389576
ontime7	166786.78389576
l1events	53034827

### 2.1.3 Events

	<b>ccd 7</b>
level 1 events	53034827
rejected events	2933640
rejected %	5%

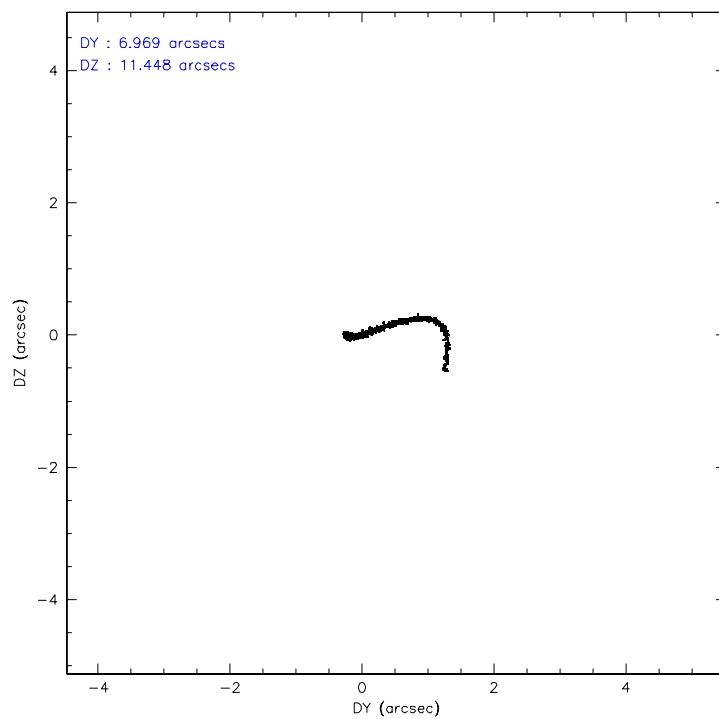
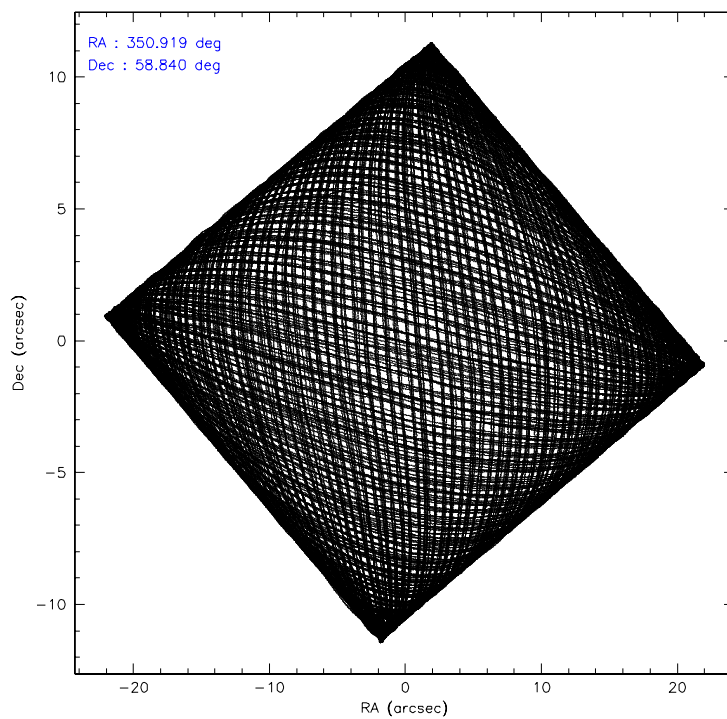
	<b>ccd 7</b>
grade 0 events	11296712
	21%
grade 1 events	203568
	0%
grade 2 events	14500346
	27%
grade 3 events	5440624
	10%
grade 4 events	5357298
	10%
grade 5 events	916235
	1%
grade 6 events	13508060
	25%
grade 7 events	1811984
	3%

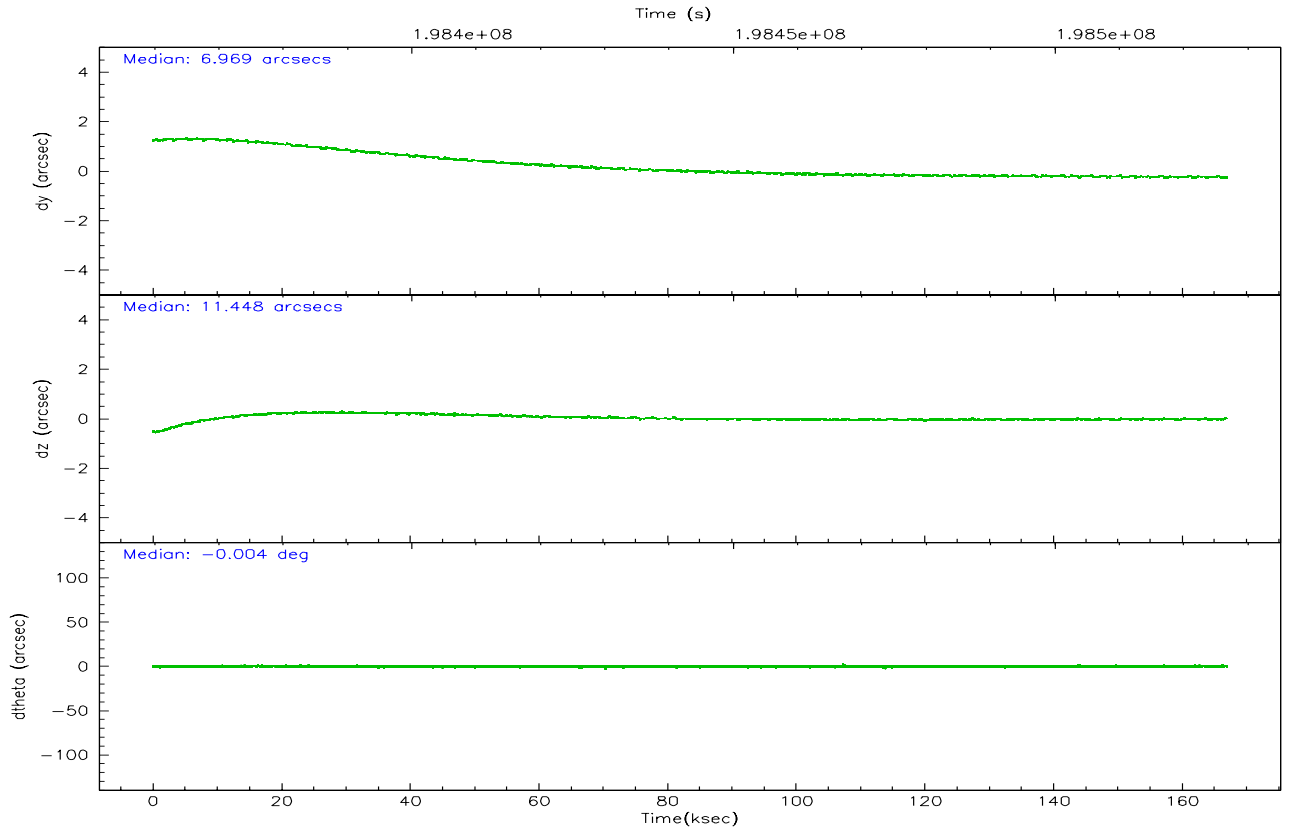
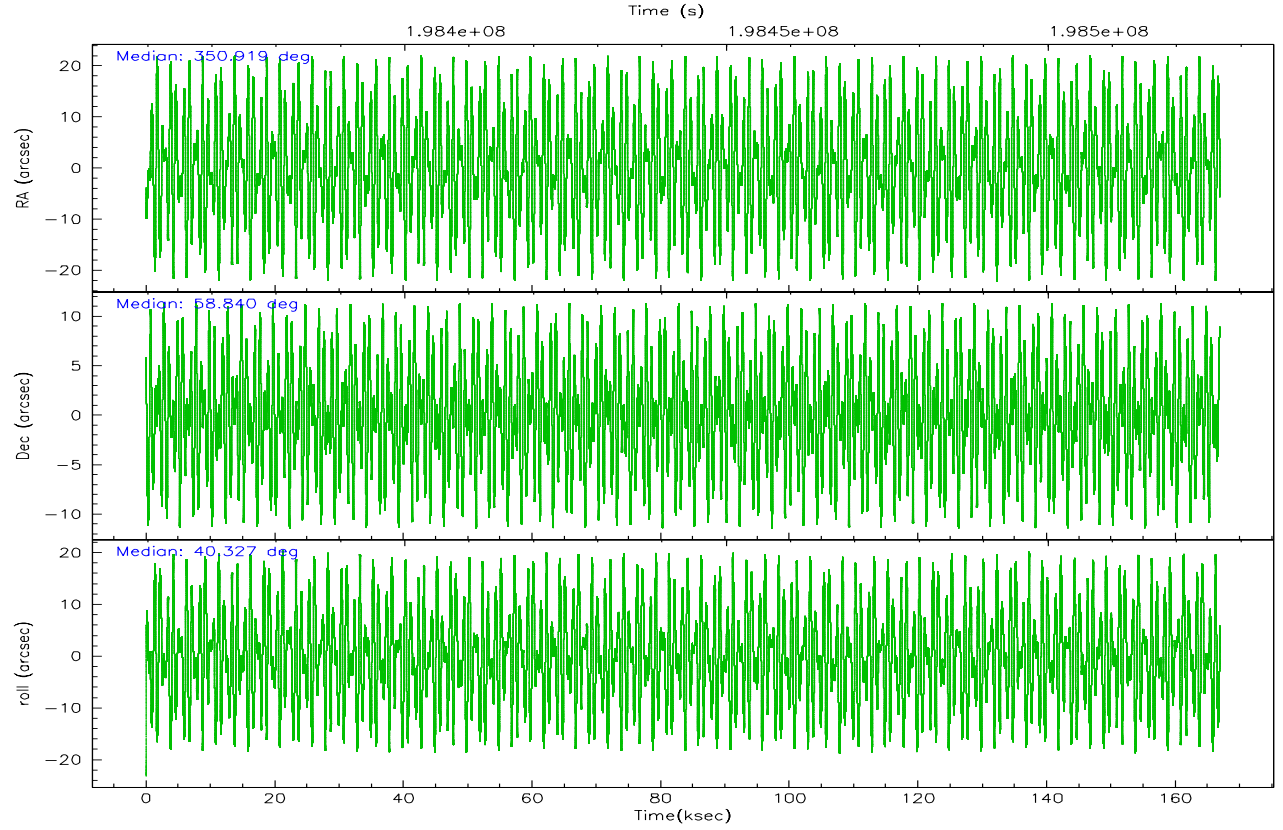


## 2.2 Compared Parameters

Parameter	Planned	Actual	Parameter	Planned	Actual
Instrument	ACIS	ACIS	Obspar format version number	6	6
Detector	ACIS-7	ACIS-7	Obspar file type	PREDICTED	ACTUAL
Grating	NONE	NONE	Obspar update status	NONE	UPDATED
Data mode	GRADED	GRADED	On-chip summing requested	N	N
Observation mode	POINTING	POINTING	Subarray requested	NONE	NONE
Pointing RA	350.901427	350.9184366459862	Alternating exposures requested	N	N
Pointing Dec	58.814575	58.84032407200446	Primary exposure time	0.000000	3
Pointing Roll	40.185235	40.32730433992822			
SIM focus pos (mm)	-0.684267	-0.6828225247311905			
SIM defocus (mm)	0	0.001444936568705701			
SIM translation stage pos (mm)	-190.132523	-190.1400660498719			
SIM translation stage offset (mm)	0	0.00754346686406393			
Observation start time	198360634.184000	198359339.01942			
Observation start date	2004-04-14T20:09:30	2004-04-14T19:48:59			
Observation end time	198526776.184000	198527091.0393			
Observation end date	2004-04-16T18:18:32	2004-04-16T18:24:51			
Read mode	TIMED	TIMED			

## 2.3 Aspect



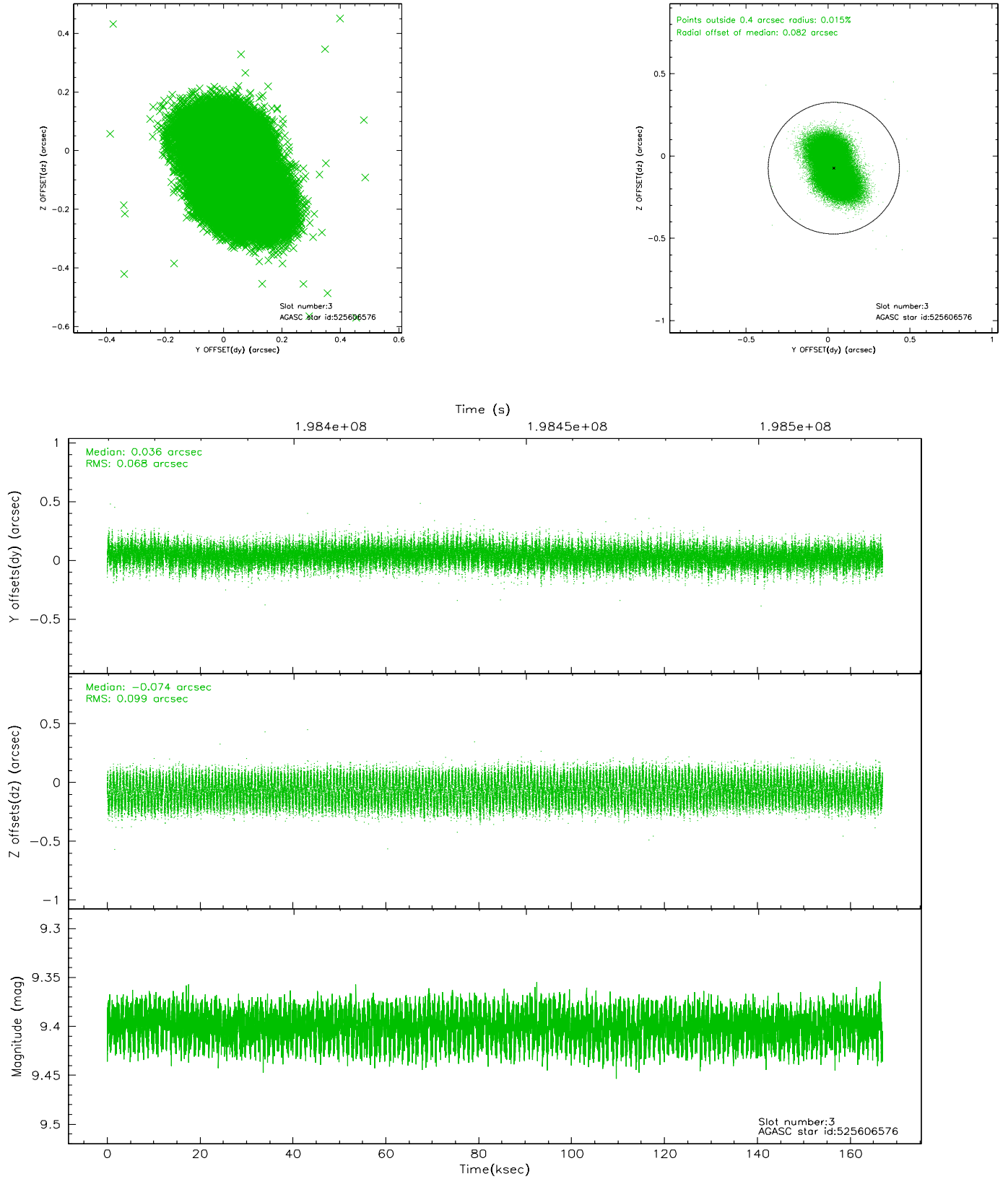


### Slot Statistics

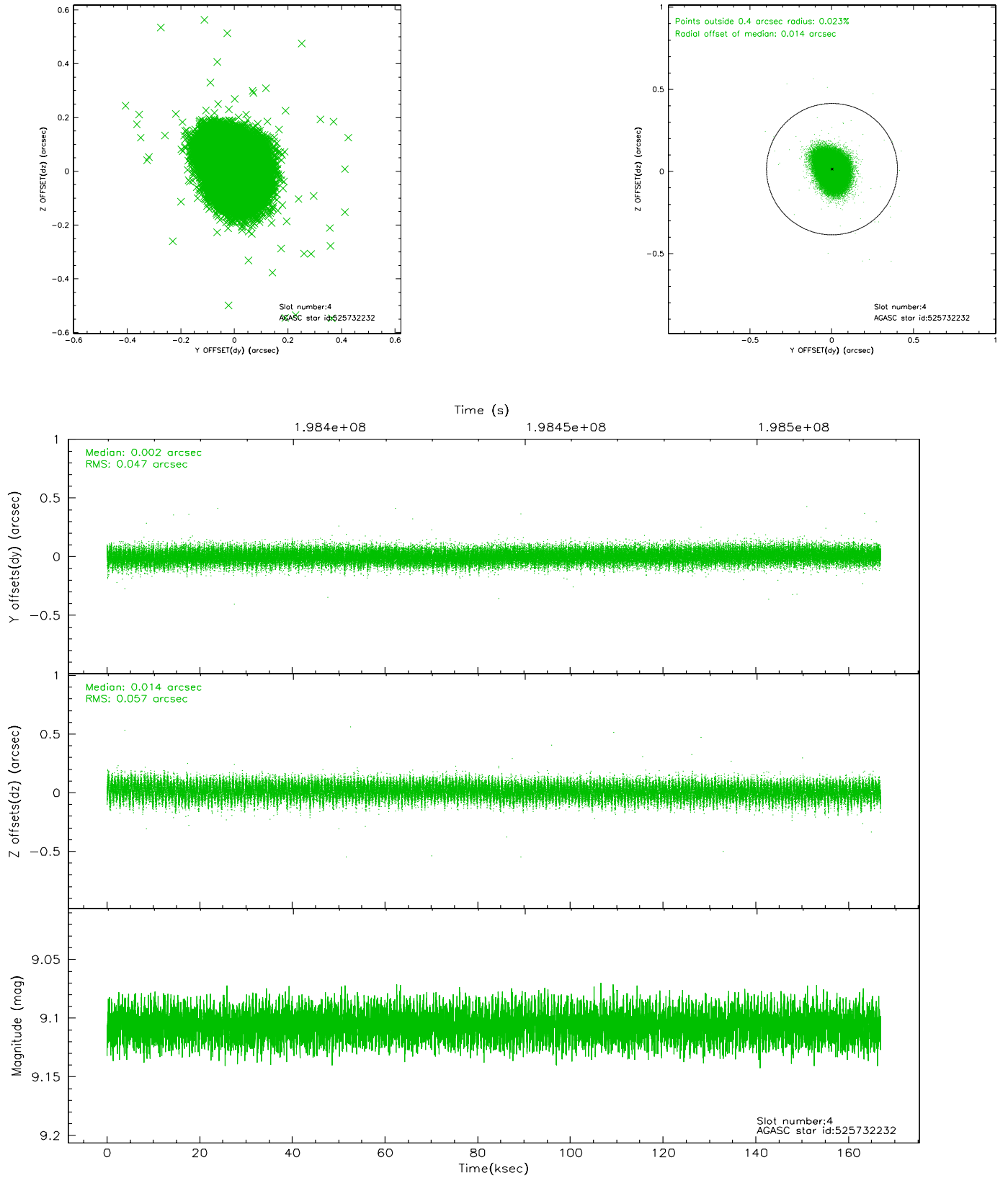
slot	status	id	mag	n_pts	med_dy	med_dz	dr1	dr2	ra	dec	mean_y	mean_z
0	FID	ACIS-S-2	7.10	40729	-0.015	-0.003	0.018	0.025	0.000000	0.000000	-759.97	-1732.78
1	FID	ACIS-S-4	7.20	40731	0.021	-0.000	0.011	0.016	0.000000	0.000000	2153.39	175.84
2	FID	ACIS-S-6	7.34	40730	-0.034	0.009	0.012	0.017	0.000000	0.000000	401.84	813.10
3	GUIDE	525606576	9.40	81333	0.036	-0.074	0.130	0.200	349.543555	58.678895	-2239.86	1286.29
4	GUIDE	525732232	9.11	81422	0.002	0.014	0.078	0.128	351.669550	58.757012	967.42	-1077.90
5	GUIDE	525735976	8.74	81432	0.006	0.078	0.065	0.105	350.142956	58.277622	-2338.85	-543.83
6	GUIDE	525736400	9.07	81413	0.029	-0.075	0.078	0.128	350.974563	59.175145	940.74	904.87
7	GUIDE	525732528	9.37	81405	-0.072	0.054	0.086	0.140	351.607241	59.298932	2120.61	500.61

## 2.4 Star Slots

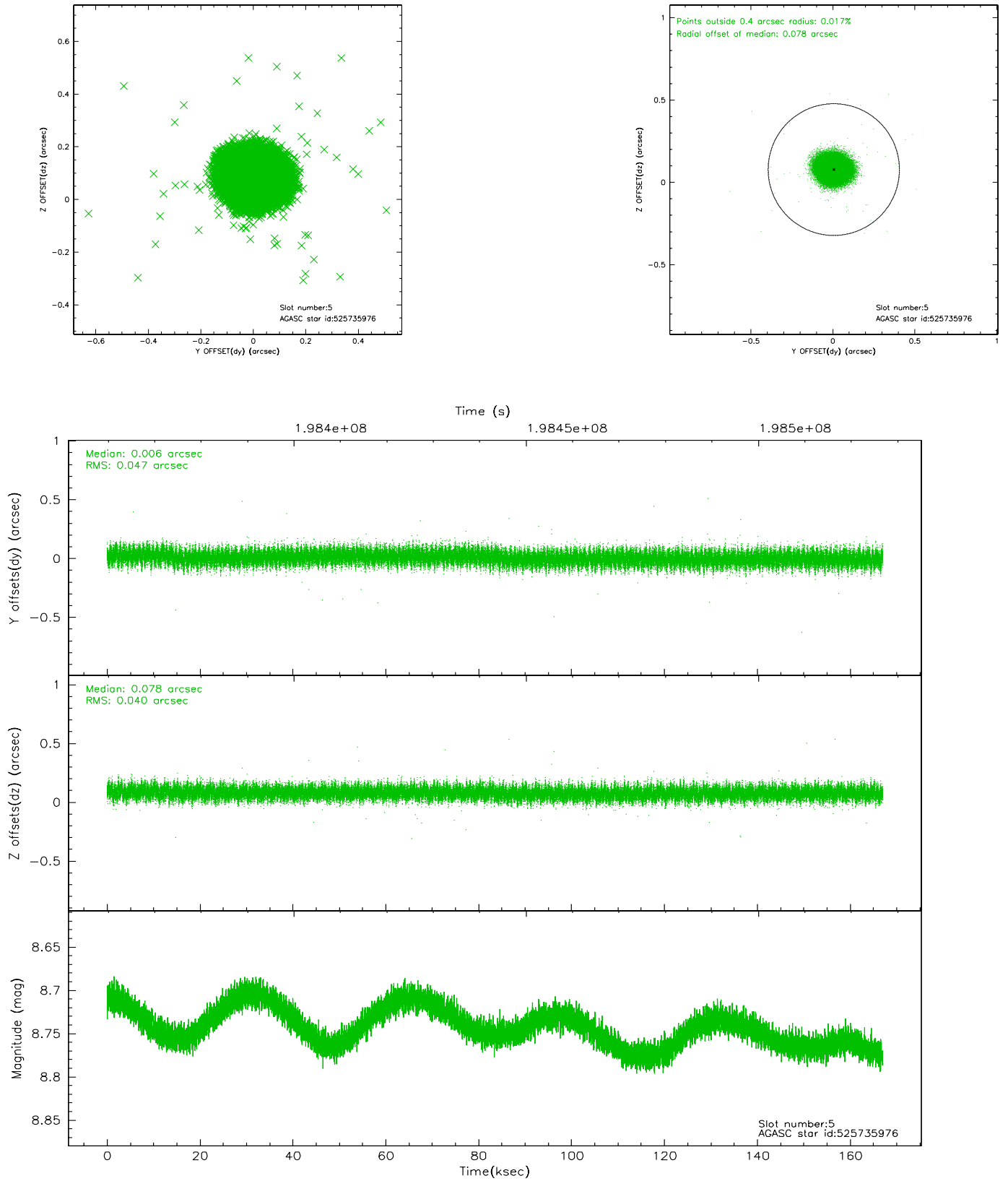
### 2.4.1 Slot 3



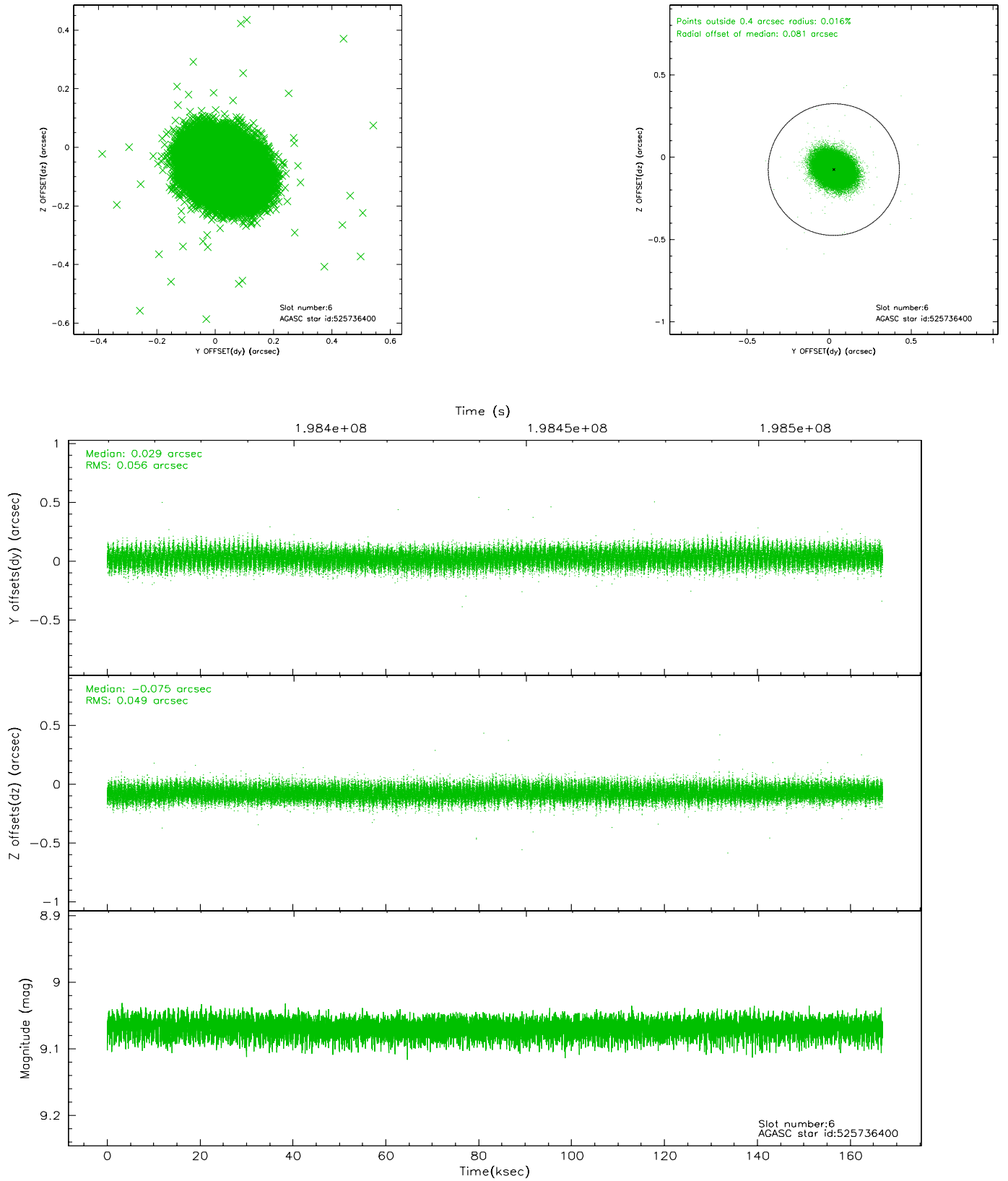
## 2.4.2 Slot 4



### 2.4.3 Slot 5

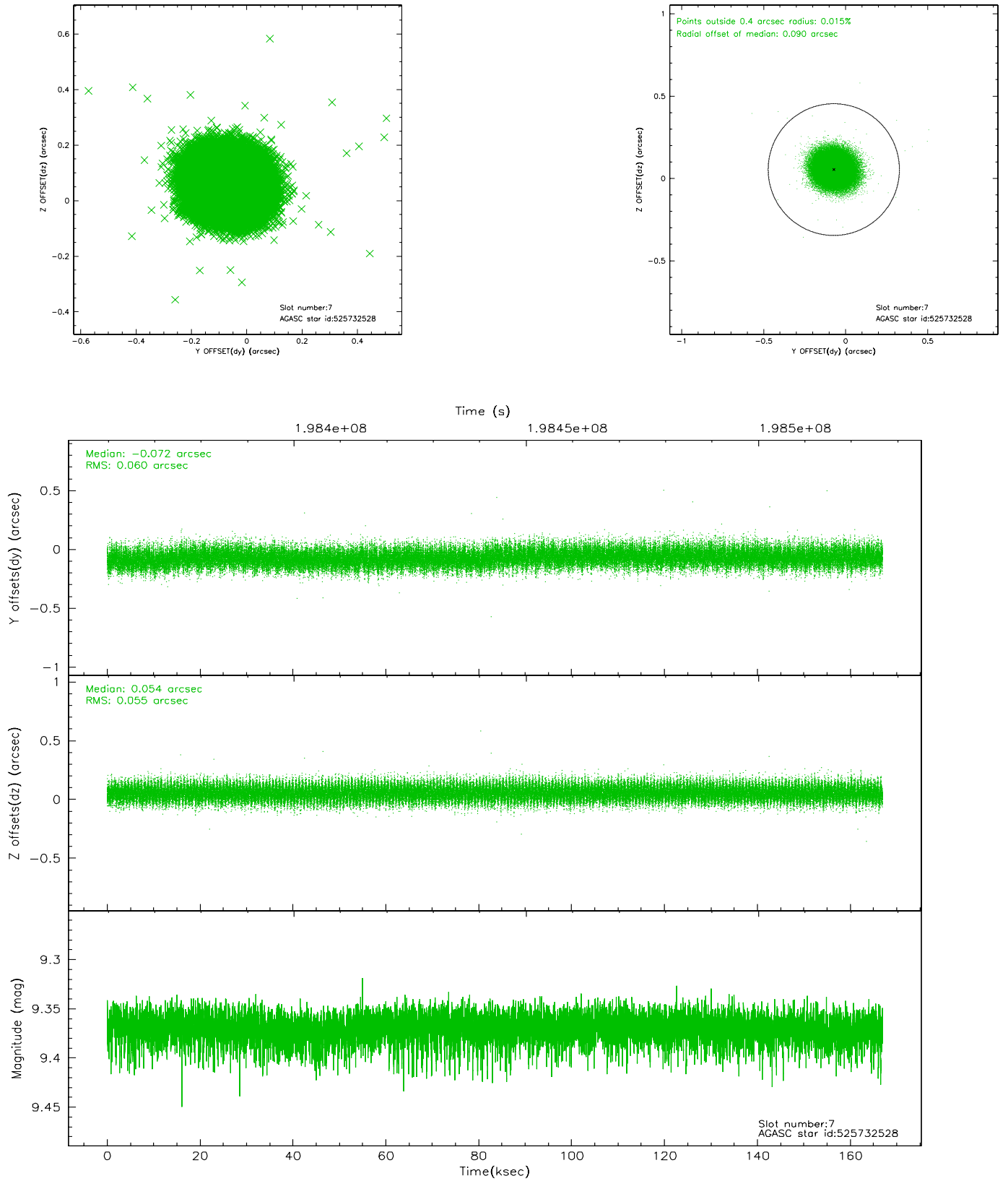


## 2.4.4 Slot 6



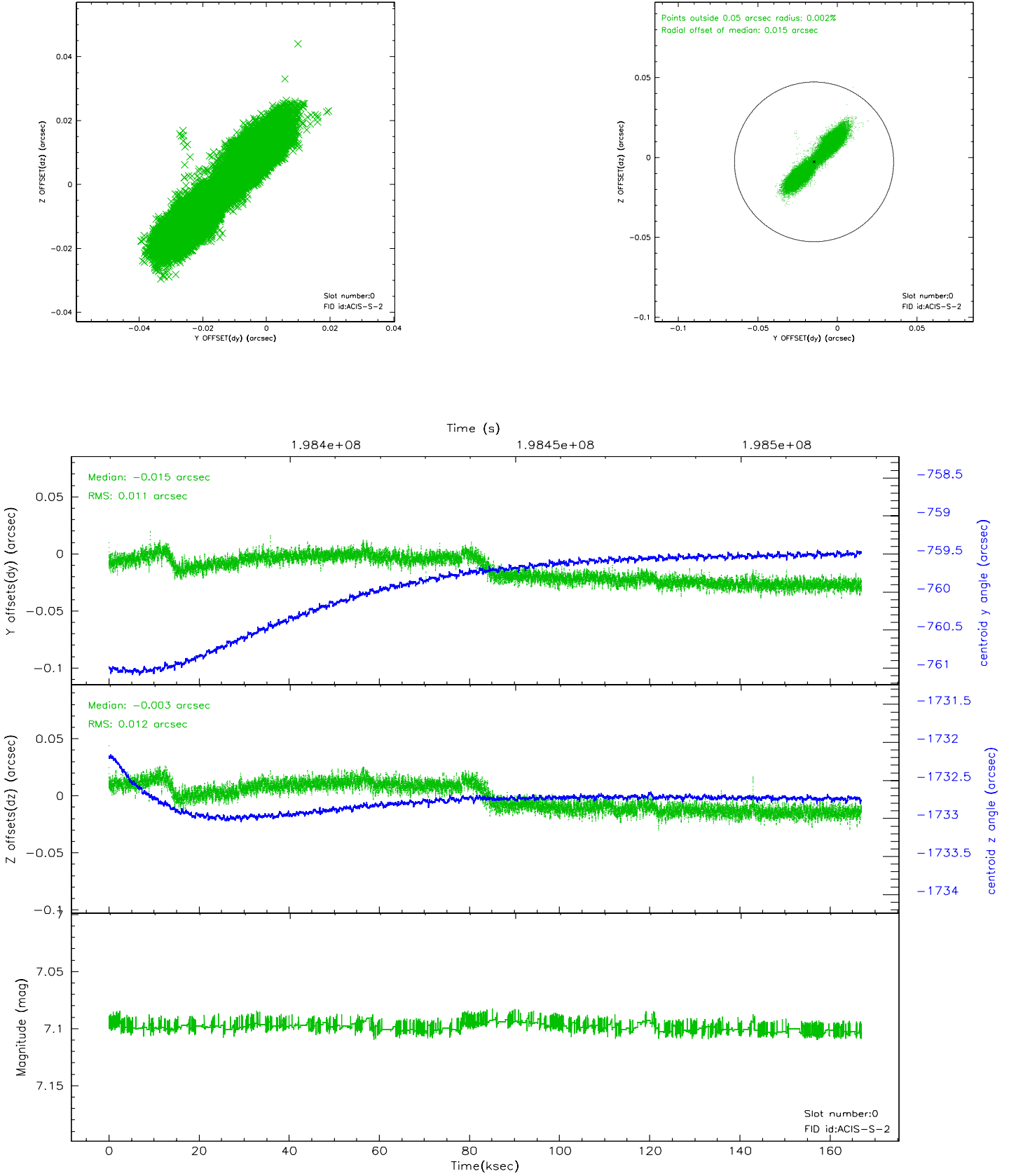


## 2.4.5 Slot 7

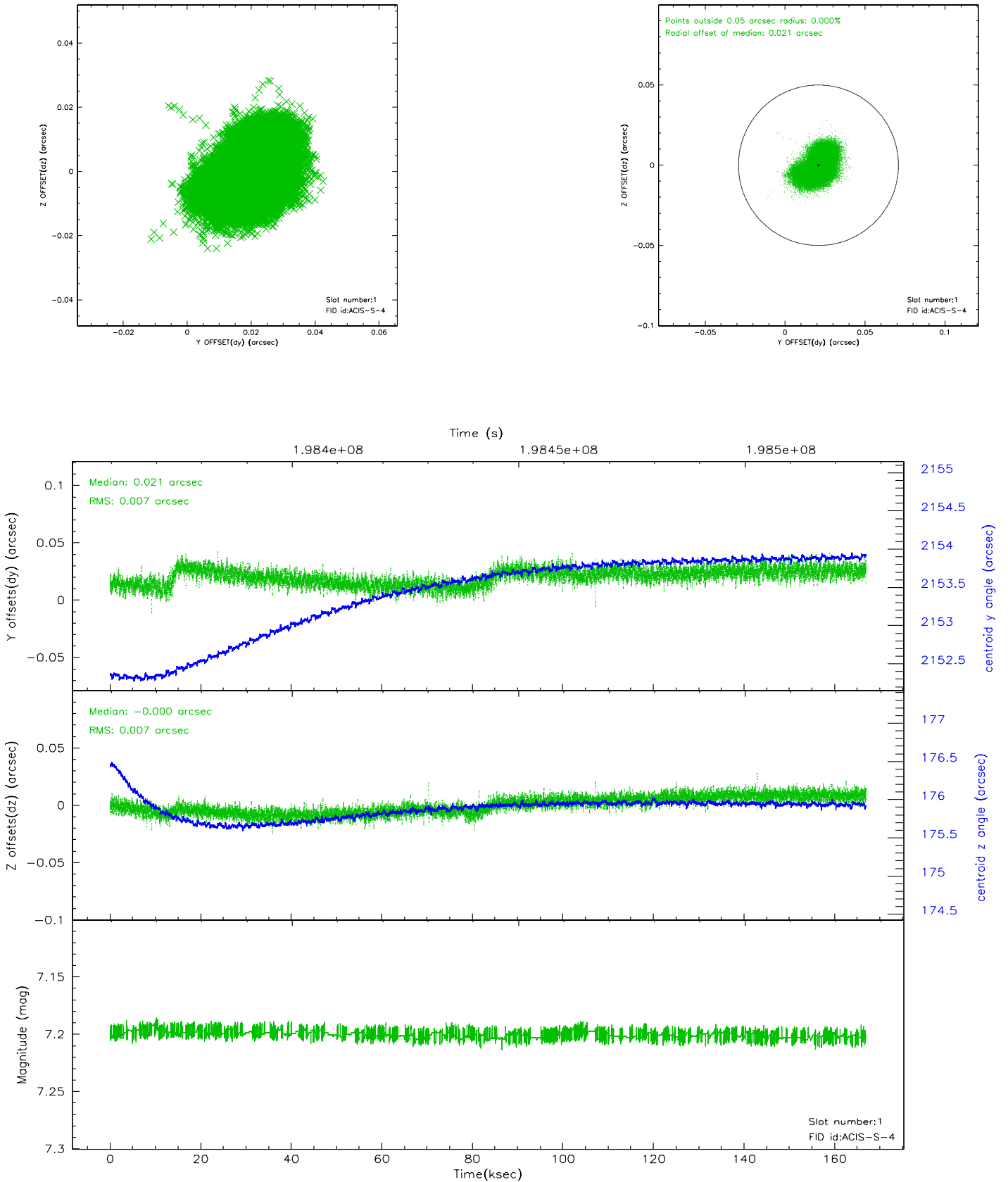


## 2.5 FID Slots

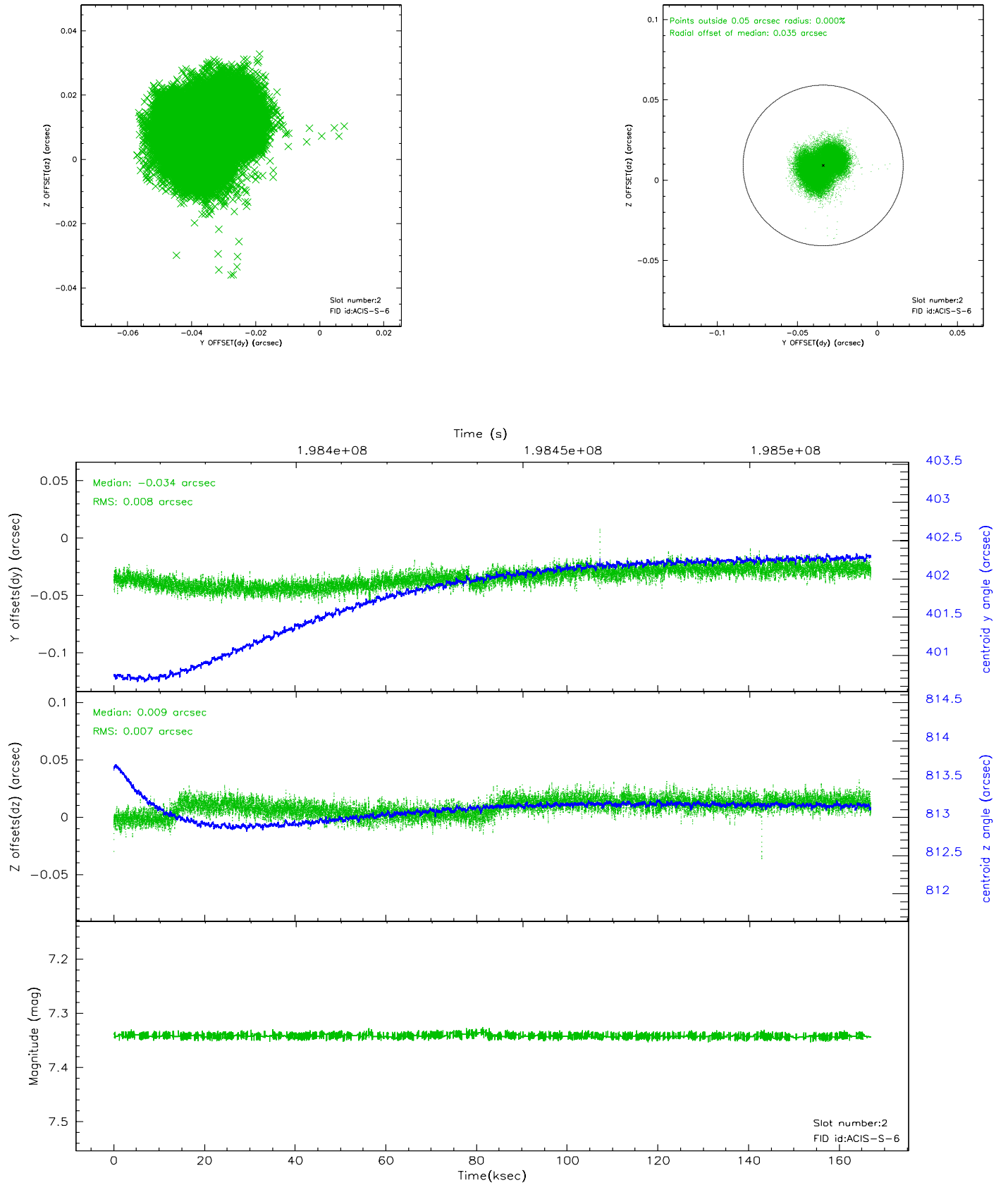
### 2.5.1 Slot 0



## 2.5.2 Slot 1

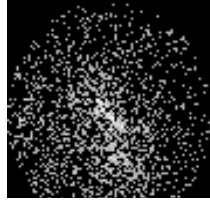


### 2.5.3 Slot 2



### 3 Point Sources

6.31 arcmin



## A Summary

### A.1 Status

V&V Scientist	Beth Sundheim
V&V Date (YYYY-MM-DD)	2006.05.30
V&V Edition	1
V&V Disposition and Status	OK
V&V Charge Time	166.719

### A.2 Comments