

# V&V Reference Report

## L2 ASCDS Version : 8.5.1

Observation 4630 - L2 Version 3  
Chandra X-Ray Center

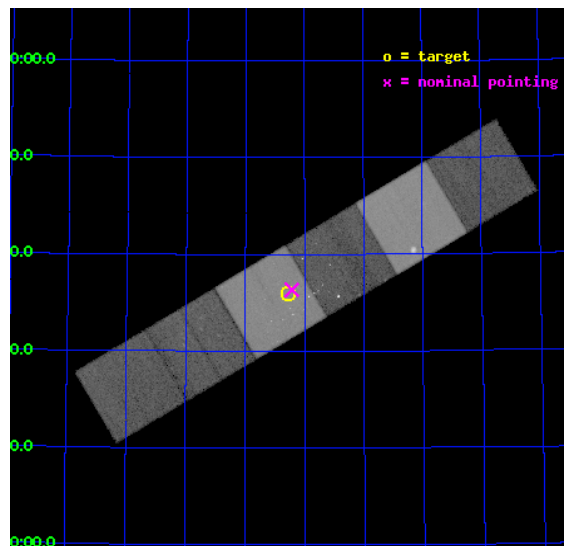
L2 Processing Date : Dec 15 2012

## Contents

<b>1</b>	<b>Front</b>	<b>2</b>
<b>2</b>	<b>OBI</b>	<b>3</b>
2.1	OBI . . . . .	3
2.1.1	Images . . . . .	3
2.1.2	Bias . . . . .	3
2.1.3	Parameters . . . . .	4
2.1.4	Events . . . . .	4
2.2	Compared Parameters . . . . .	5
2.3	Aspect . . . . .	6
2.4	Star Slots . . . . .	9
2.4.1	Slot 3 . . . . .	9
2.4.2	Slot 4 . . . . .	10
2.4.3	Slot 5 . . . . .	11
2.4.4	Slot 6 . . . . .	12
2.4.5	Slot 7 . . . . .	13
2.5	FID Slots . . . . .	14
2.5.1	Slot 0 . . . . .	14
2.5.2	Slot 1 . . . . .	15
2.5.3	Slot 2 . . . . .	16
<b>A</b>	<b>Summary</b>	<b>17</b>
A.1	Status . . . . .	17
A.2	Comments . . . . .	17

# 1 Front

seq_num	500455	Sequence number
obs_id	4630	Observation id
title	Prompt Chandra Observations of Nearby Supernovae	Proposal title
observer	Prof. Walter Lewin	Principal investigator
object	SN 2004dj	Source name
dtcycle	0	&#160
cycle	P	events from which exps? Prim/Second/Both
ra_targ	114.32125	Observer's specified target RA [deg]
dec_targ	65.599528	Observer's specified target Dec [deg]
ra_nom	114.3035019663	Nominal RA [deg]
dec_nom	65.605847118838	Nominal Dec [deg]
roll_nom	149.30228792196	Nominal Roll [deg]
revision	3	Processing version of data
ontime	50574.627752513	Sum of GTIs [s]
livetime	49934.221363526	Livetime [s]
ontime4	50574.668792516	Sum of GTIs [s]
ontime5	50574.586712509	Sum of GTIs [s]
ontime6	50571.304692209	Sum of GTIs [s]
ontime7	50574.627752513	Sum of GTIs [s]
ontime8	50571.26371187	Sum of GTIs [s]
ontime9	50574.463592529	Sum of GTIs [s]
l2events	661094	Number of level 2 events

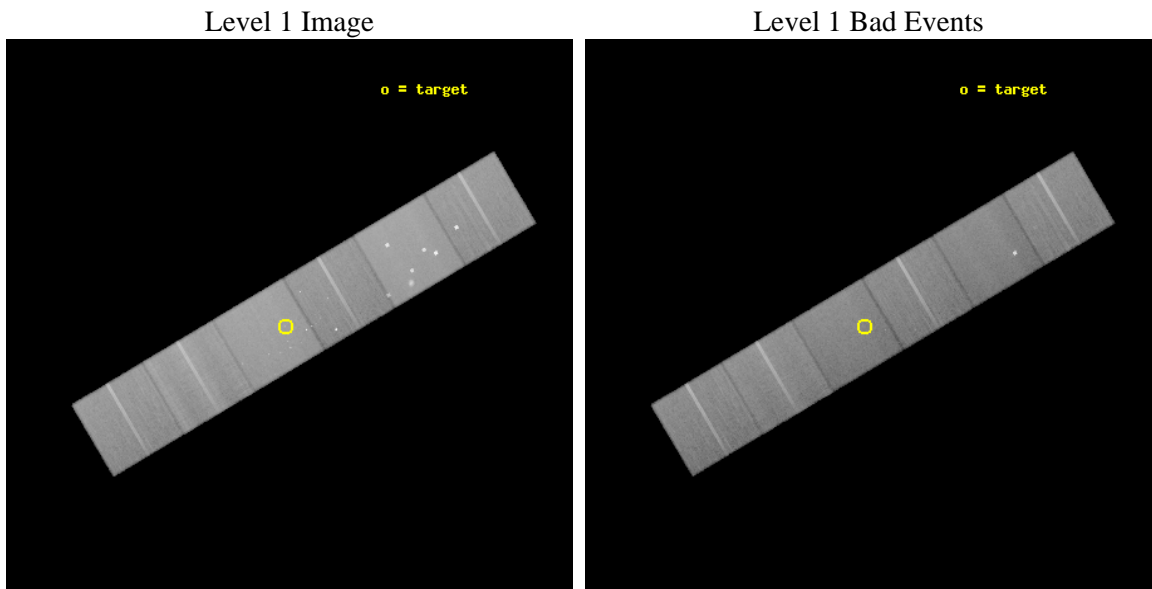




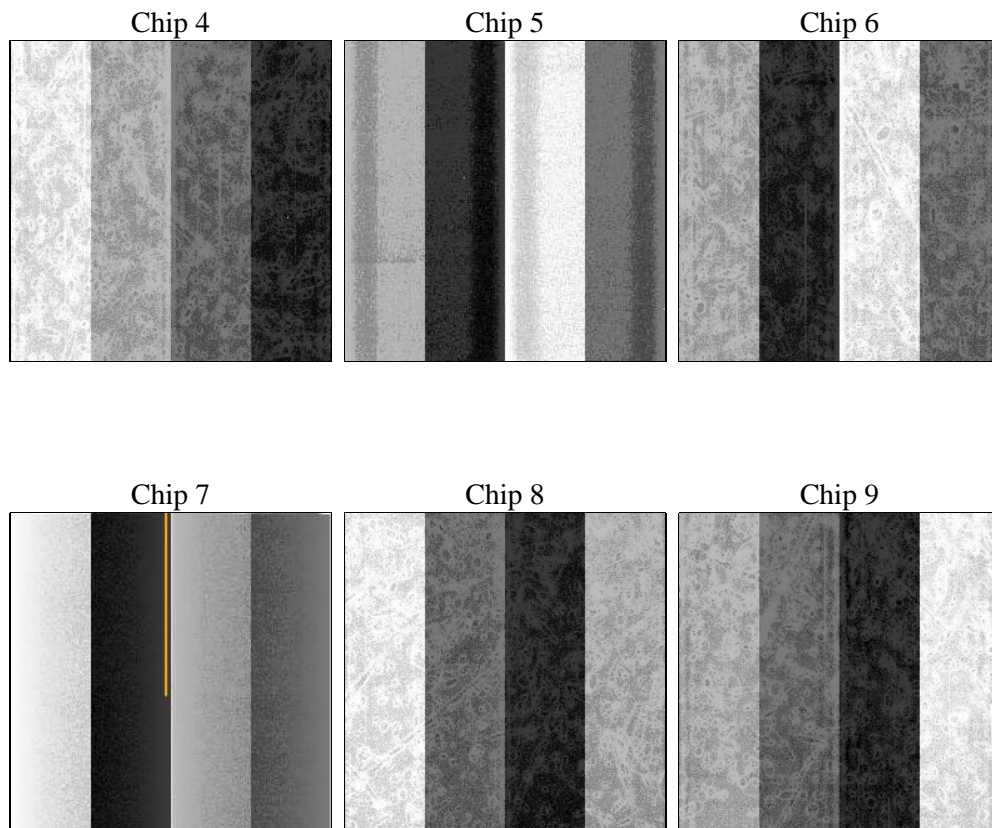
## 2 OBI

### 2.1 OBI

#### 2.1.1 Images



#### 2.1.2 Bias



### 2.1.3 Parameters

obi_num	0	Obi number	sched_exp_time	50620.000000	[s] Scheduled observation exposure time
ascdsver	8.5.1	Processing system revision	ontime	50574.627752513	Sum of GTIs [s]
caldsver	4.5.5	&#160	ontime4	50574.668792516	Sum of GTIs [s]
date	2012-12-15T06:53:36	Date and time of file creation	ontime5	50574.586712509	Sum of GTIs [s]
revision	3	Processing version of data	ontime6	50571.304692209	Sum of GTIs [s]
			ontime7	50574.627752513	Sum of GTIs [s]
			ontime8	50571.26371187	Sum of GTIs [s]
			ontime9	50574.463592529	Sum of GTIs [s]
			l1events	2936434	Number of level 1 events

### 2.1.4 Events

	ccd 4	ccd 5	ccd 6	ccd 7	ccd 8	ccd 9		ccd 4	ccd 5	ccd 6	ccd 7	ccd 8	ccd 9
level 1 events	459216	630210	408092	542768	499383	396765	grade 0 events	36431	52234	25795	21442	33317	19831
rejected events	394904	325817	352404	314064	393751	349153		7%	8%	6%	3%	6%	4%
rejected %	85%	51%	86%	57%	78%	87%	grade 1 events	451	4874	248	521	353	220
								0%	0%	0%	0%	0%	0%
							grade 2 events	10429	86648	10747	45774	23367	9078
								2%	13%	2%	8%	4%	2%
							grade 3 events	4996	11474	4772	20233	11121	4713
								1%	1%	1%	3%	2%	1%
							grade 4 events	4855	10888	4866	20323	10461	4693
								1%	1%	1%	3%	2%	1%
							grade 5 events	17573	44474	18221	51053	23937	19204
								3%	7%	4%	9%	4%	4%
							grade 6 events	7603	143177	9510	120955	27369	9300
								1%	22%	2%	22%	5%	2%
							grade 7 events	376878	276441	333933	262467	369458	329726
								82%	43%	81%	48%	73%	83%

## 2.2 Compared Parameters

Parameter	Planned	Actual	Parameter	Planned	Actual
Instrument	ACIS	ACIS	Obspar format version number	7	7
Detector	ACIS-456789	ACIS-456789	Obspar file type	PREDICTED	ACTUAL
Grating	NONE	NONE	Obspar update status	NONE	UPDATED
Data mode	FAINT	FAINT	Number of optional ACIS chips dropped	0	0
Observation mode	POINTING	POINTING	On-chip summing requested	N	N
[deg] Pointing RA	114.369477	114.3035019662969	Subarray requested	NONE	NONE
[deg] Pointing Dec	65.605874	65.60584711883786	Alternating exposures requested	N	N
[deg] Pointing Roll	149.085577	149.3022879219571	[s] Primary exposure time	0.000000	3.2
[mm] SIM focus pos	-0.684267	-0.6828225247311905			
[mm] SIM defocus	0	0.001444936568705701			
[mm] SIM translation stage pos	-190.132523	-190.1400660498719			
[mm] SIM translation stage offset	0	0.00754346686406393			
[s] Observation start time (MET)	220116644.184000	220115609.71305			
Observation start date	2004-12-22T15:29:40	2004-12-22T15:13:29			
[s] Observation end time (MET)	220167264.184000	220168051.79041			
Observation end date	2004-12-23T05:33:20	2004-12-23T05:47:31			
Read mode	TIMED	TIMED			

## 2.3 Aspect

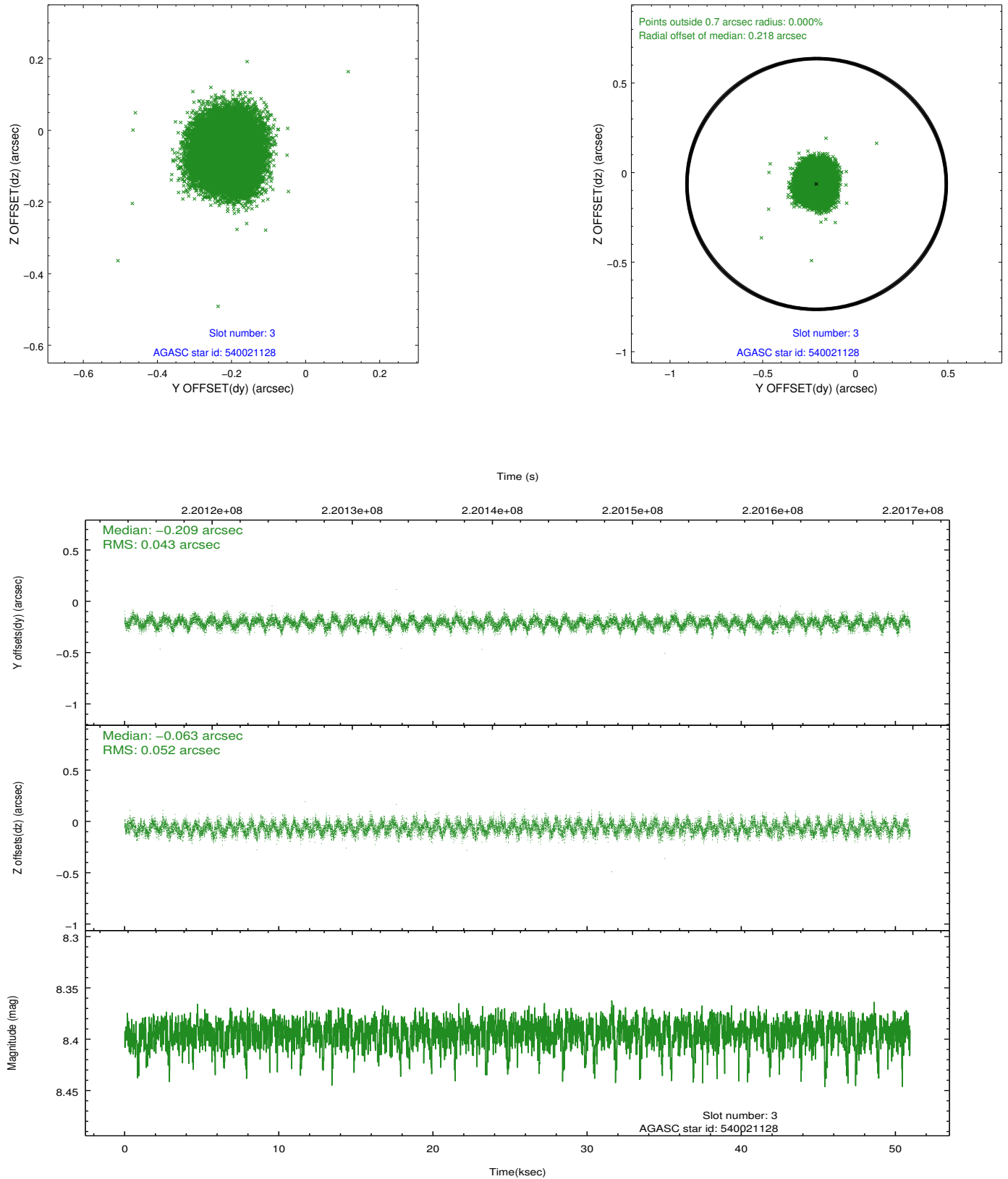


### Slot Statistics

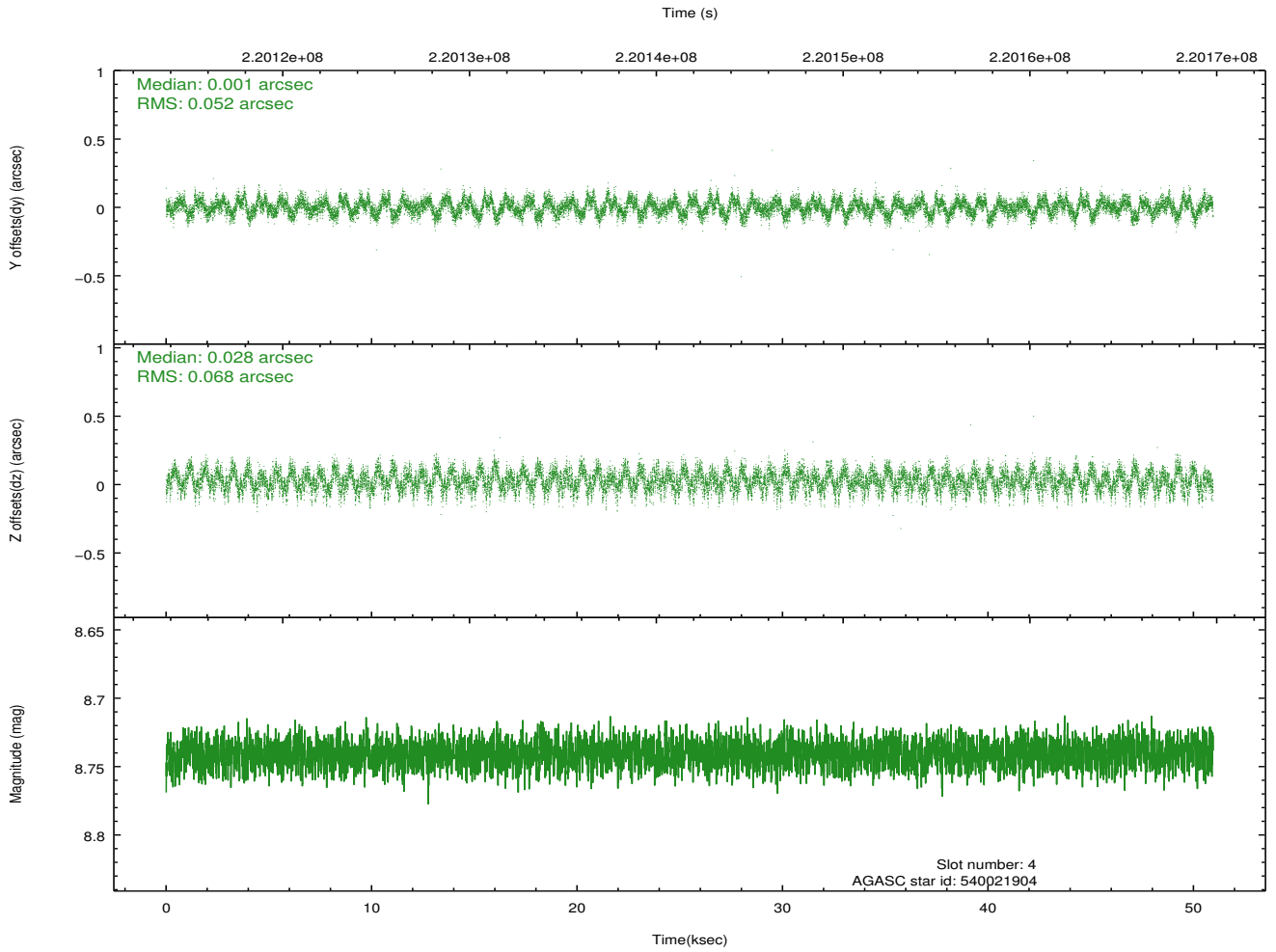
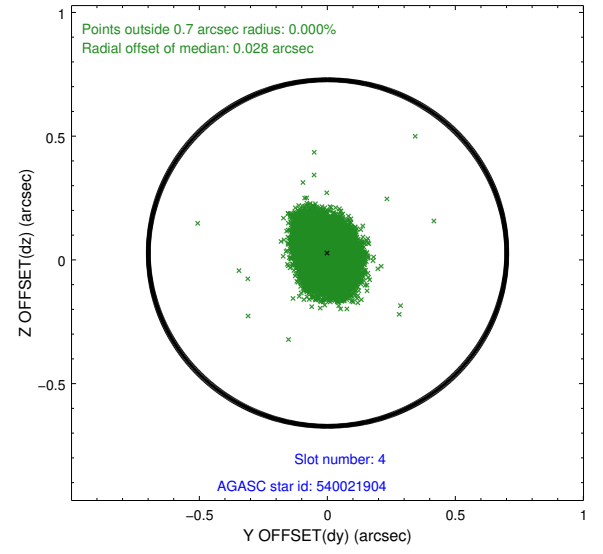
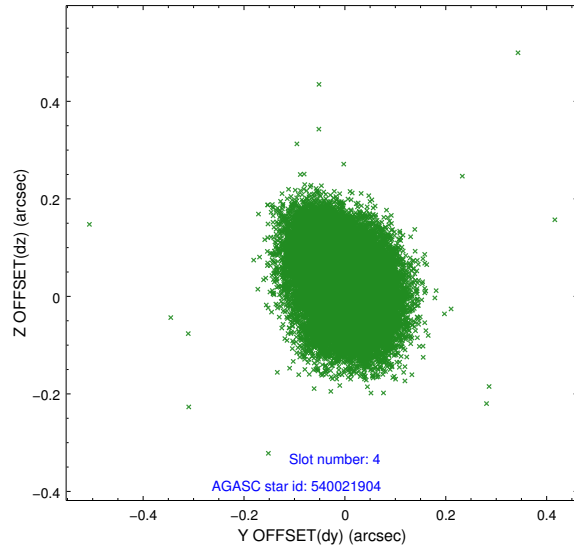
slot	status	id	mag	n_pts	med_dy	med_dz	dr1	dr2	ra	dec	mean_y	mean_z
0	FID	ACIS-S-2	7.11	12429	-0.041	-0.021	0.009	0.015	0.000000	0.000000	-761.06	-1731.72
1	FID	ACIS-S-4	7.21	12429	0.125	0.026	0.013	0.031	0.000000	0.000000	2152.34	176.90
2	FID	ACIS-S-5	7.23	12428	-0.114	0.004	0.012	0.026	0.000000	0.000000	-1814.05	170.43
3	GUIDE	540021128	8.39	24841	-0.209	-0.063	0.073	0.114	114.291258	65.330448	-408.67	911.05
4	GUIDE	540021904	8.74	24850	0.001	0.028	0.092	0.147	114.203372	65.242134	-457.71	1251.98
5	GUIDE	540541056	8.92	24837	-0.018	0.106	0.083	0.133	114.633382	66.183962	740.88	-1982.66
6	GUIDE	540548768	8.47	24745	0.050	-0.164	0.188	0.253	113.788166	65.673634	867.29	230.65
7	GUIDE	540153792	9.35	24834	0.174	0.090	0.082	0.135	115.938716	65.425474	-2333.52	-674.80

## 2.4 Star Slots

### 2.4.1 Slot 3

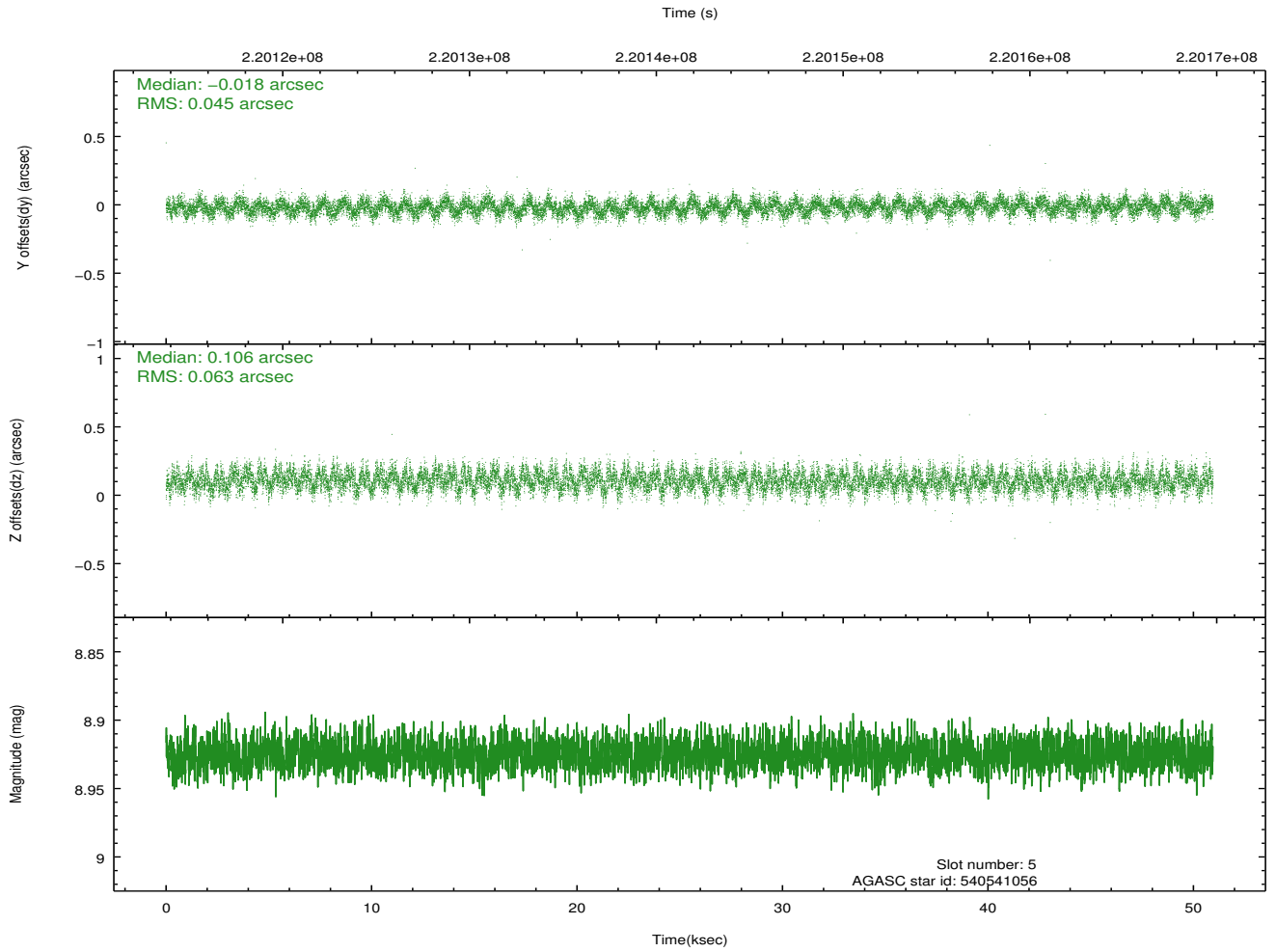
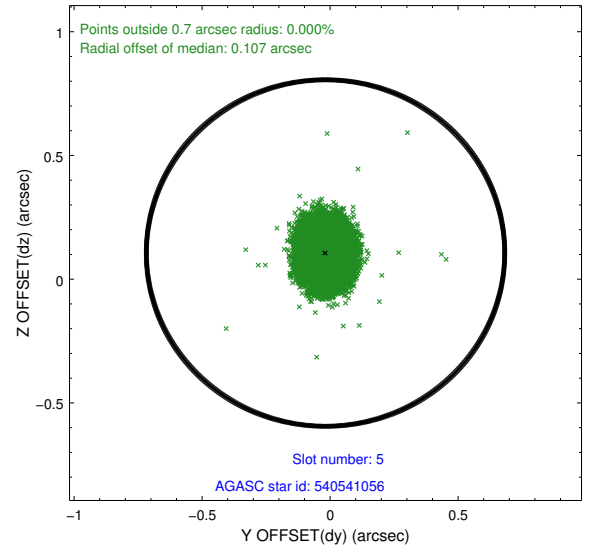
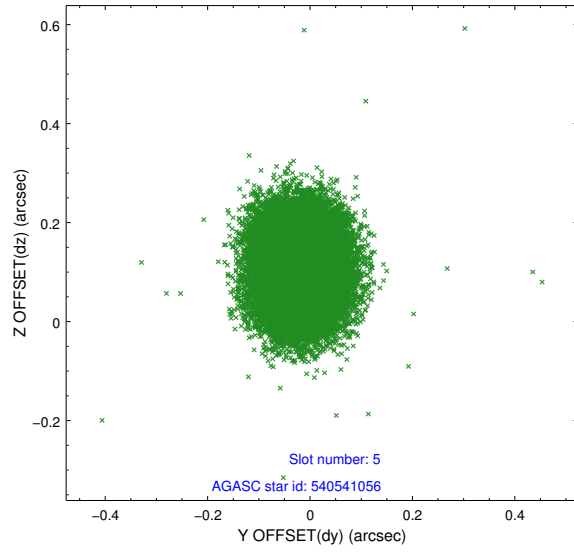


## 2.4.2 Slot 4

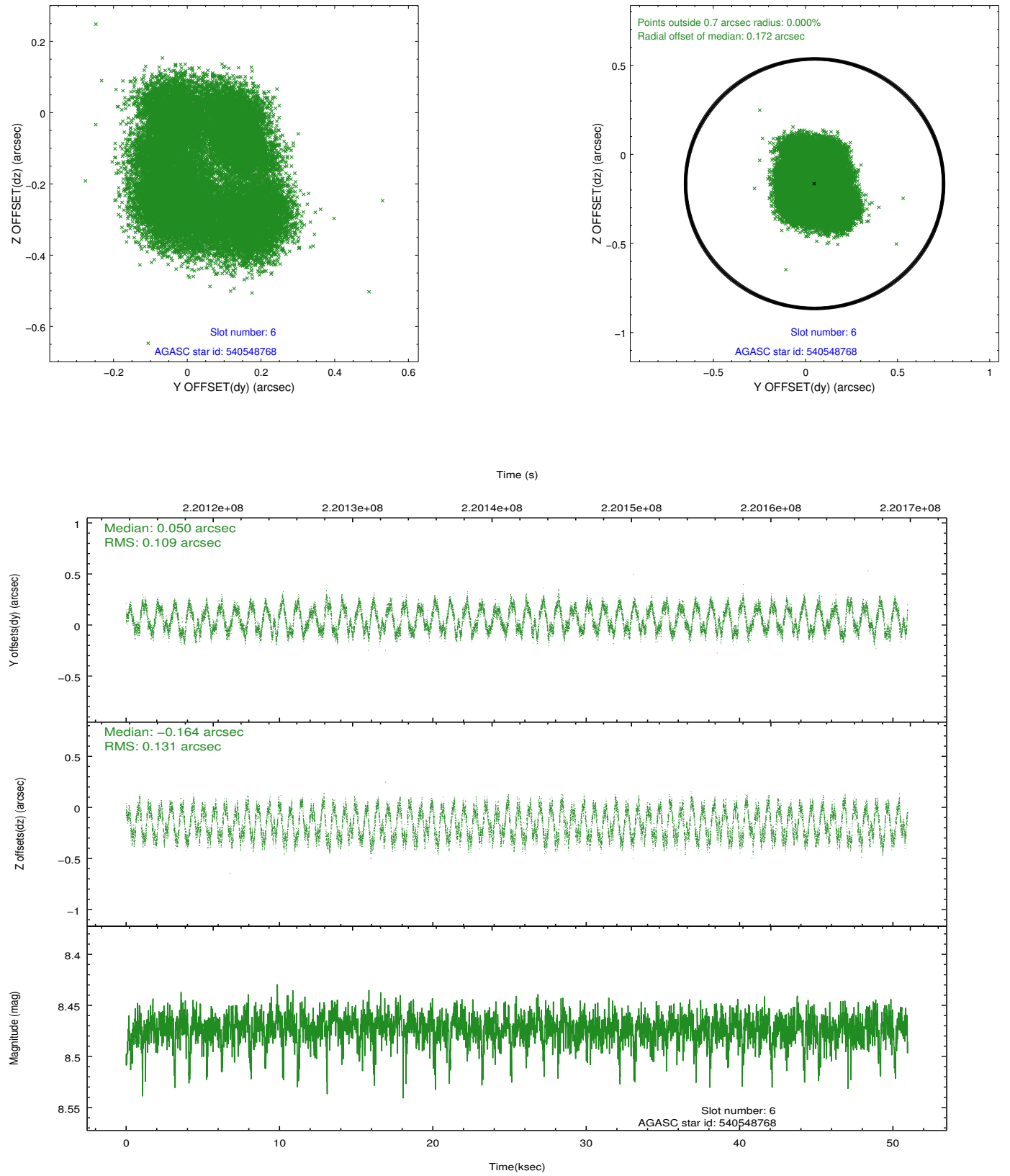




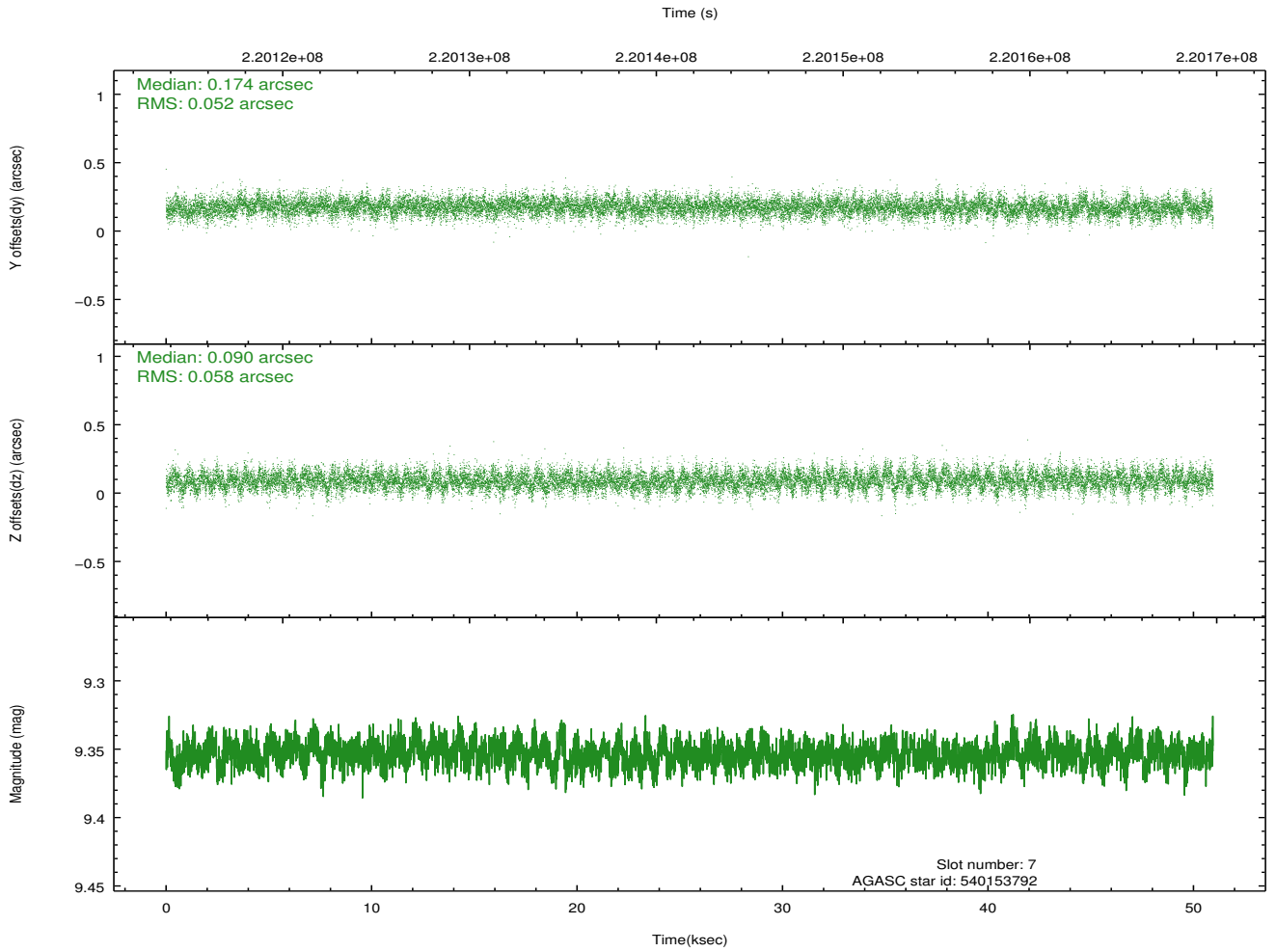
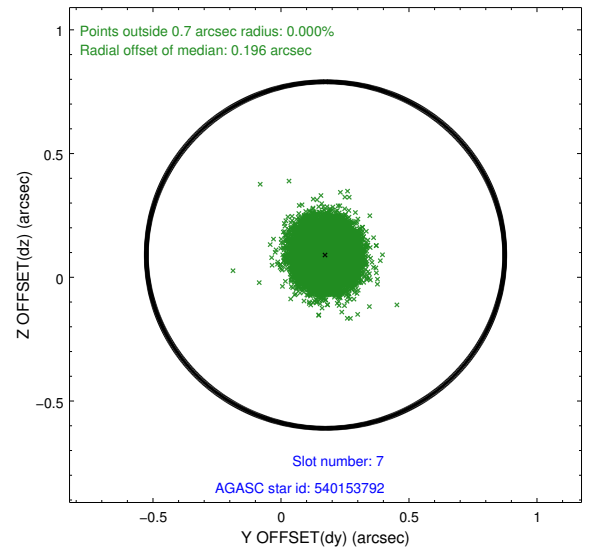
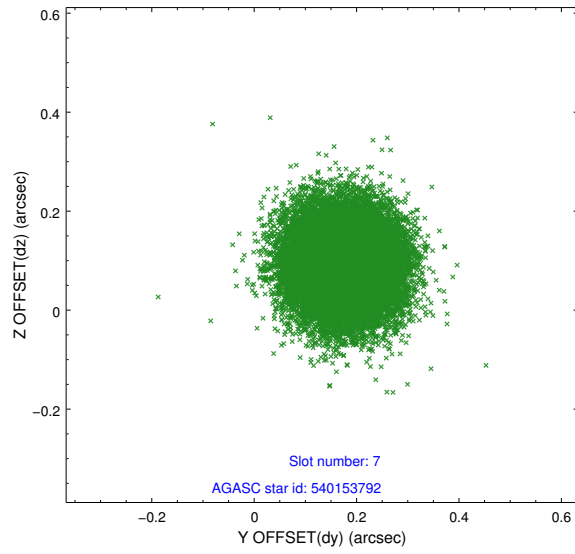
### 2.4.3 Slot 5



## 2.4.4 Slot 6

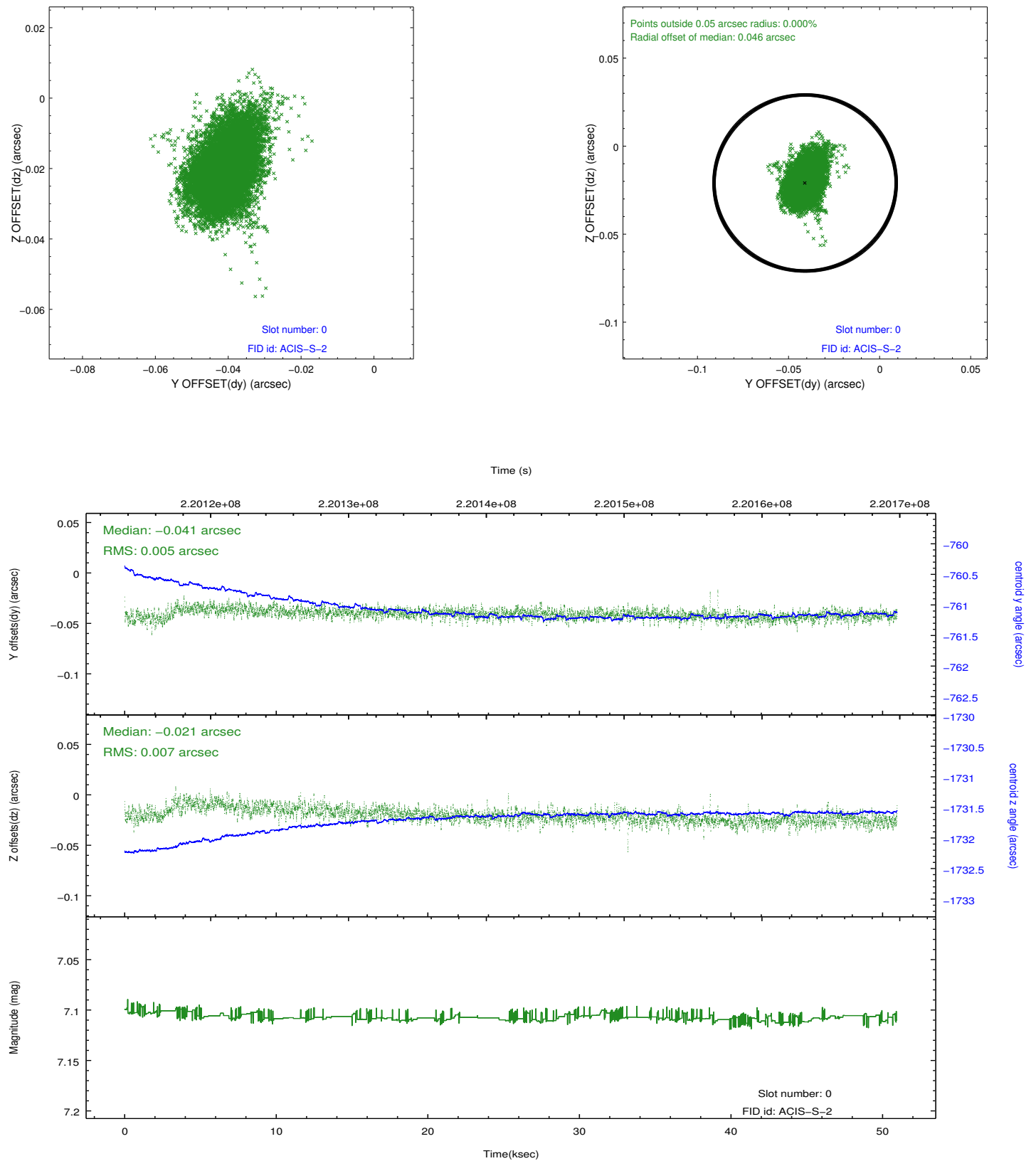


## 2.4.5 Slot 7

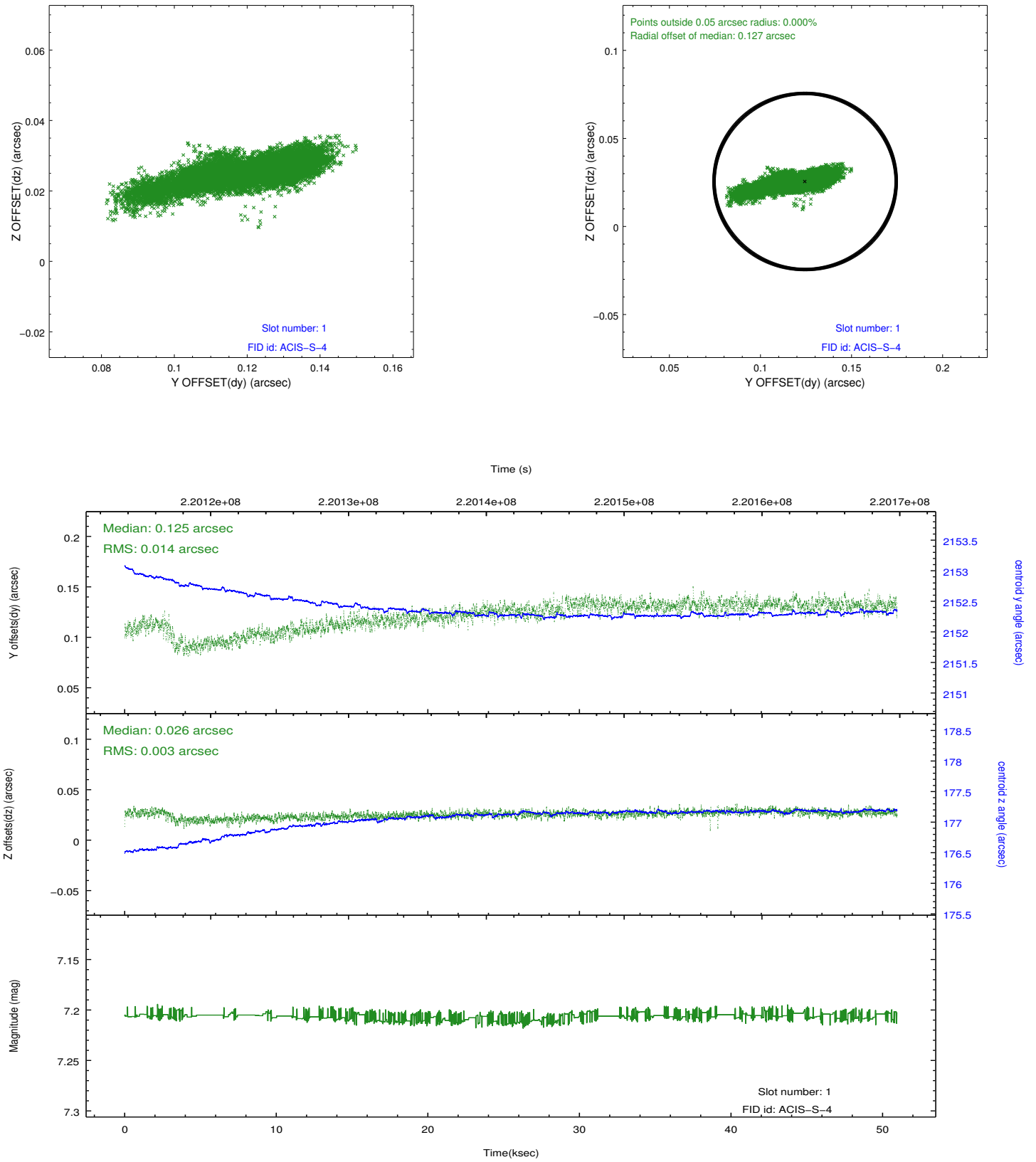


## 2.5 FID Slots

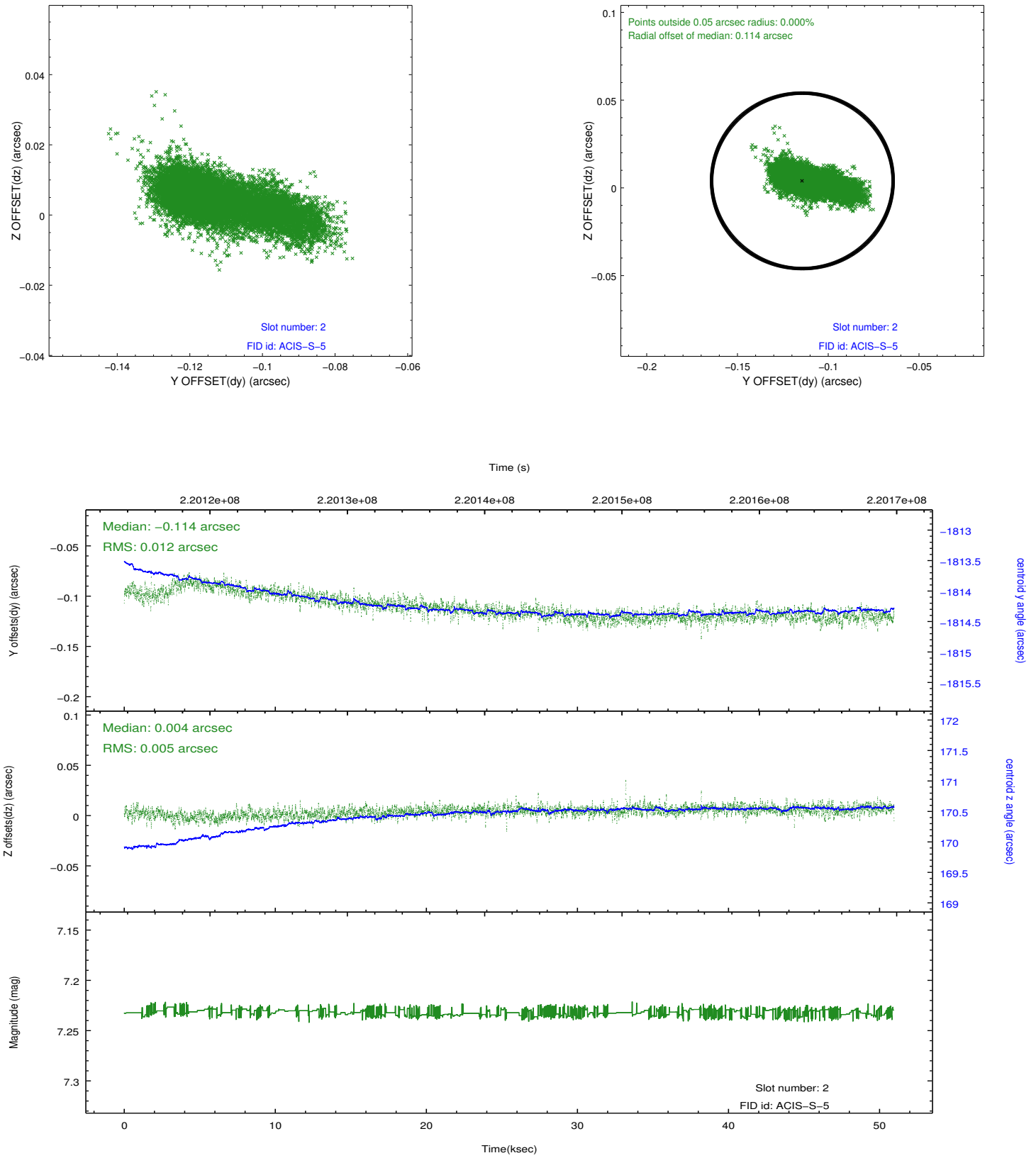
### 2.5.1 Slot 0



## 2.5.2 Slot 1



### 2.5.3 Slot 2



## **A Summary**

### **A.1 Status**

V&V Scientist	Jen Lauer
V&V Date (YYYY-MM-DD)	2013.01.08
V&V Edition	1
V&V Disposition and Status	OK
V&V Charge Time	50.57599

### **A.2 Comments**