

V&V Reference Report

L2 ASCDS Version : 7.6.7.1

Observation 4629 - L2 Version 001
Chandra X-Ray Center

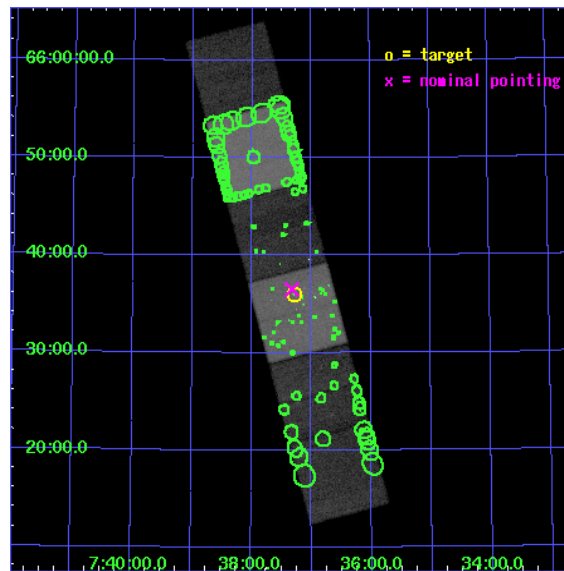
L2 Processing Date : Apr 16 2006

Contents

1	Front	2
2	OBI	3
2.1	OBI	3
2.1.1	Images	3
2.1.2	Bias	3
2.1.3	Parameters	4
2.1.4	Events	4
2.2	Compared Parameters	5
2.3	Aspect	6
2.4	Star Slots	9
2.4.1	Slot 3	9
2.4.2	Slot 4	10
2.4.3	Slot 5	11
2.4.4	Slot 6	12
2.4.5	Slot 7	13
2.5	FID Slots	14
2.5.1	Slot 0	14
2.5.2	Slot 1	15
2.5.3	Slot 2	16
3	Point Sources	17
A	Summary	18
A.1	Status	18
A.2	Comments	18

1 Front

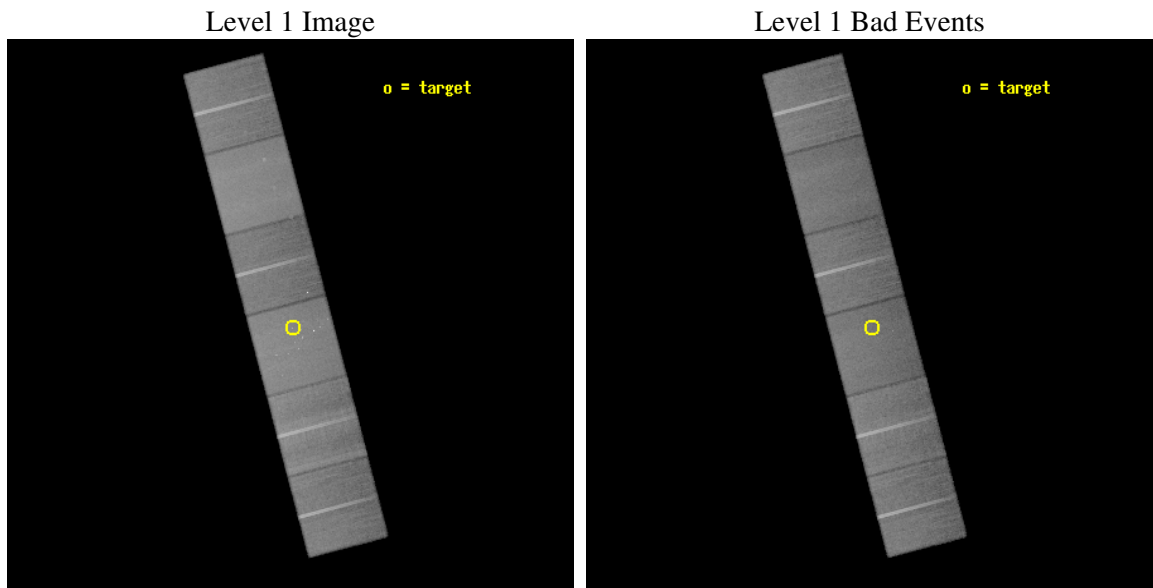
seq_num	500454
obs_id	4629
title	Prompt Chandra Observations of Nearby Supernovae
observer	Prof. Walter Lewin
object	SN 2004dj
dtcycle	0
cycle	P
ra_targ	114.32125
dec_targ	65.599528
ra_nom	114.33107119187
dec_nom	65.608289987258
roll_nom	75.221210740549
revision	2
ontime	45142.399831831
livetime	44570.779583671
ontime4	45142.399831831
ontime5	45142.399831831
ontime6	45139.15884164
ontime7	45142.399831831
ontime8	45139.158961177
ontime9	45142.399831831
l2events	537102



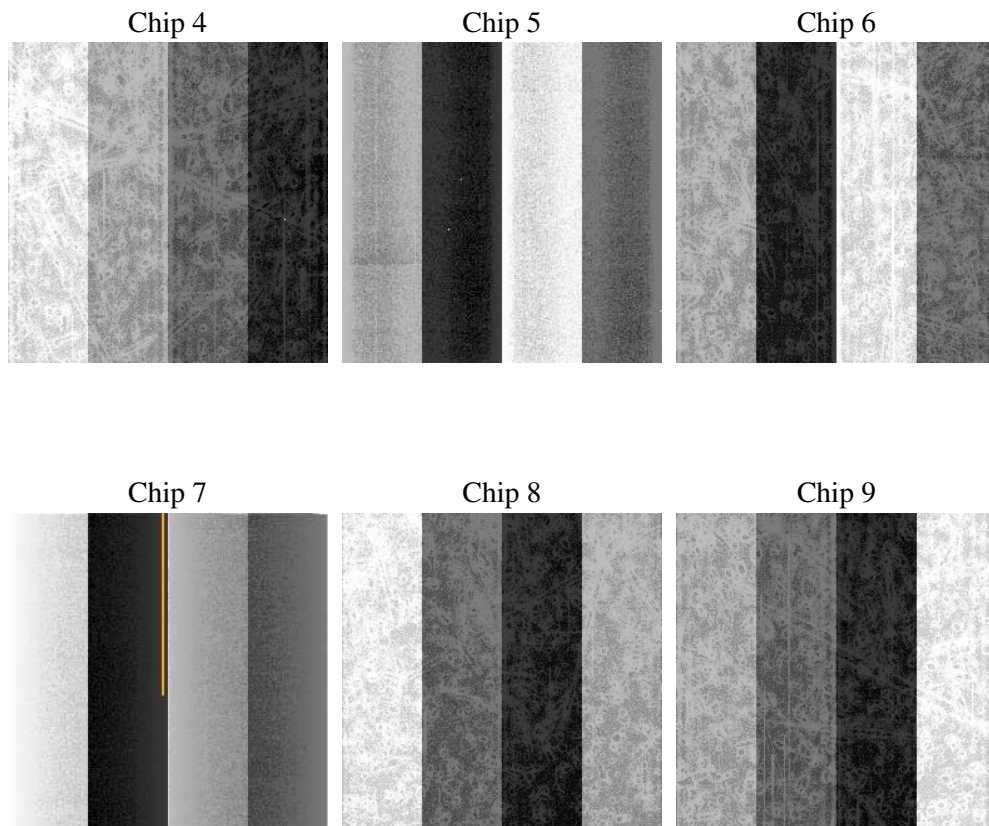
2 OBI

2.1 OBI

2.1.1 Images



2.1.2 Bias



2.1.3 Parameters

obi_num	0
ascdsver	7.6.7.1
caldsver	3.2.1
date	2006-04-16T22:30:48
revision	2

sched_exp_time	45000.000000
ontime	45186.044289172
ontime4	45186.044289172
ontime5	45186.044319063
ontime6	45182.80329898
ontime7	45186.044289172
ontime8	45186.04443863
ontime9	45189.285309285
l1events	2497465

2.1.4 Events

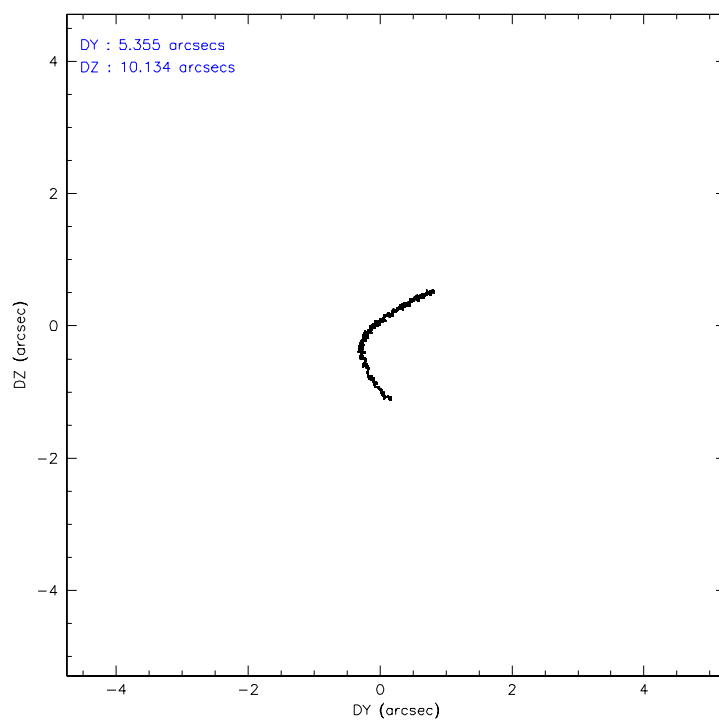
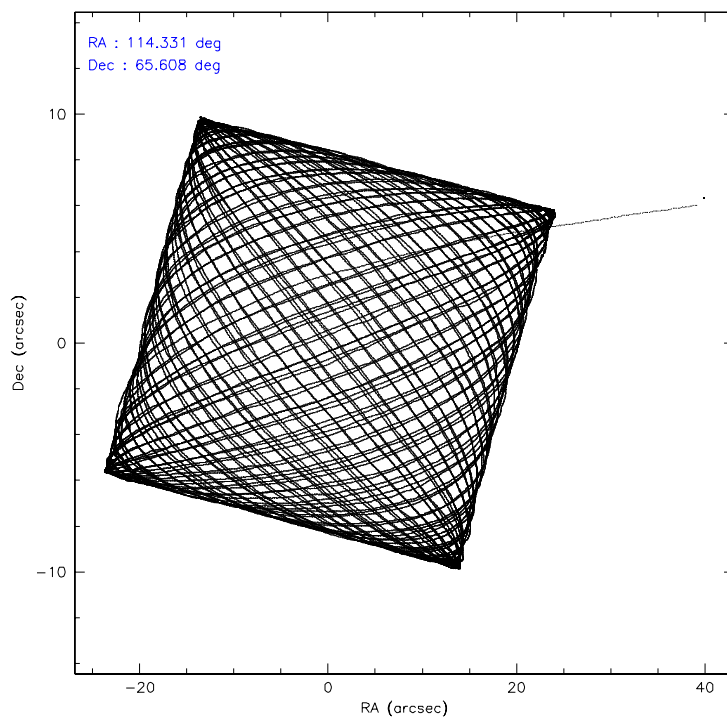
	ccd 4	ccd 5	ccd 6	ccd 7	ccd 8	ccd 9
level 1 events	386479	501653	352231	470516	438992	347594
rejected events	343967	286033	310433	288062	347819	305643
rejected %	89%	57%	88%	61%	79%	87%

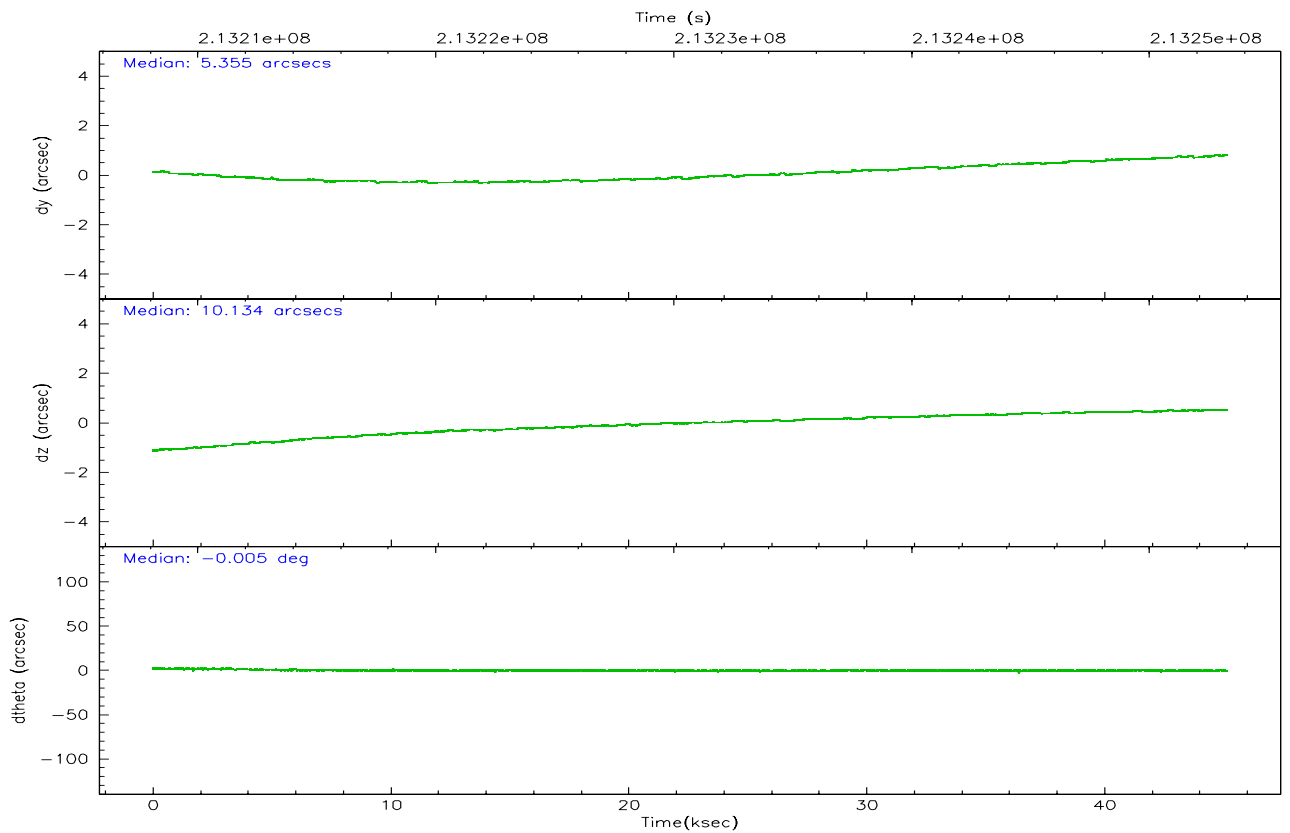
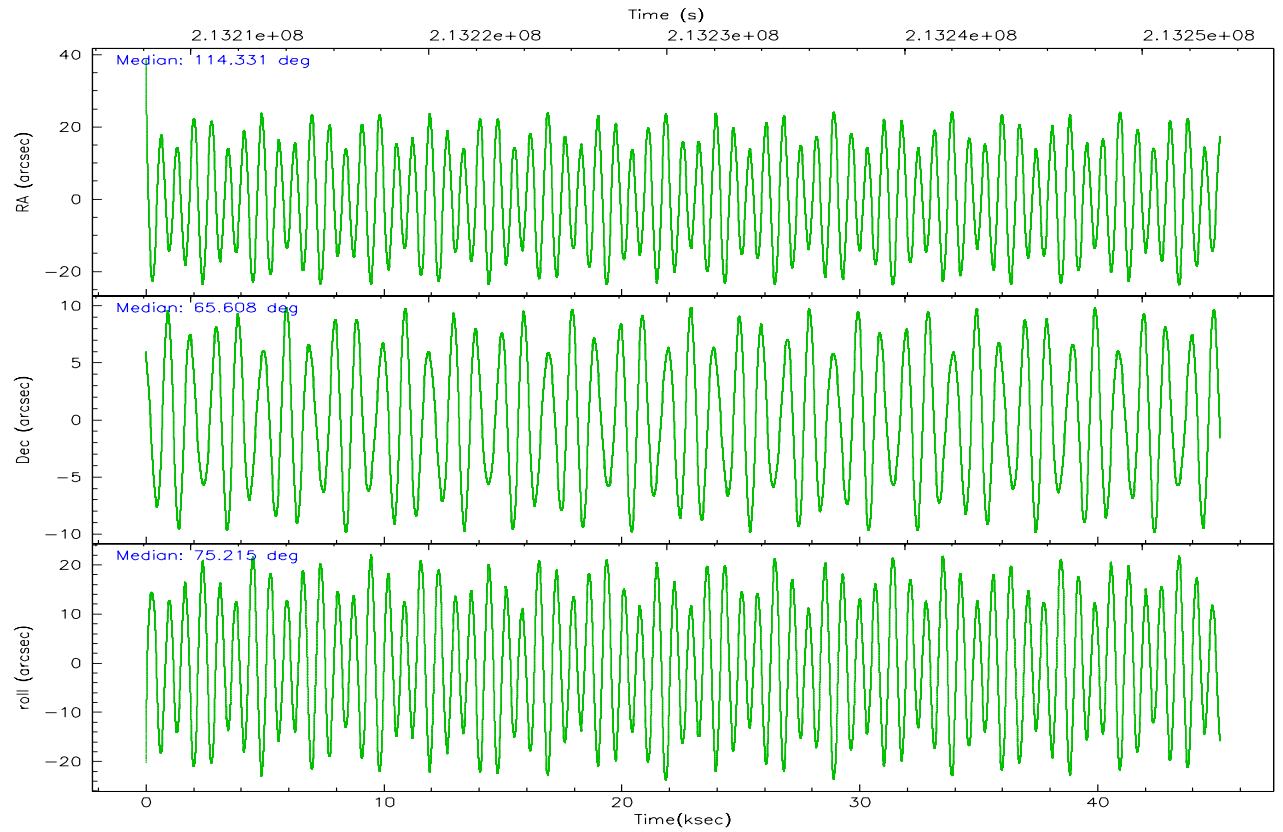
	ccd 4	ccd 5	ccd 6	ccd 7	ccd 8	ccd 9
grade 0 events	18618	9187	16986	11862	28675	17401
	4%	1%	4%	2%	6%	5%
grade 1 events	345	377	197	319	266	214
	0%	0%	0%	0%	0%	0%
grade 2 events	8758	67911	8681	45849	20088	8196
	2%	13%	2%	9%	4%	2%
grade 3 events	4297	4850	4079	9217	9734	4200
	1%	0%	1%	1%	2%	1%
grade 4 events	4169	4601	3945	9202	9097	4153
	1%	0%	1%	1%	2%	1%
grade 5 events	15209	24109	15664	30115	21120	16823
	3%	4%	4%	6%	4%	4%
grade 6 events	6713	129325	8137	106496	23660	8050
	1%	25%	2%	22%	5%	2%
grade 7 events	328370	261293	294542	257456	326352	288557
	84%	52%	83%	54%	74%	83%

2.2 Compared Parameters

Parameter	Planned	Actual	Parameter	Planned	Actual
Instrument	ACIS	ACIS	Obspar format version number	6	6
Detector	ACIS-456789	ACIS-456789	Obspar file type	PREDICTED	ACTUAL
Grating	NONE	NONE	Obspar update status	NONE	UPDATED
Data mode	FAINT	FAINT	On-chip summing requested	N	N
Observation mode	POINTING	POINTING	Subarray requested	NONE	NONE
Pointing RA	114.349252	114.3310711918661	Alternating exposures requested	N	N
Pointing Dec	65.582110	65.60828998725822	Primary exposure time	0.000000	3.2
Pointing Roll	75.048027	75.22121074054945			
SIM focus pos (mm)	-0.684267	-0.6828225247311905			
SIM defocus (mm)	0	0.001444936568705701			
SIM translation stage pos (mm)	-190.132523	-190.1400660498719			
SIM translation stage offset (mm)	0	0.00754346686406393			
Observation start time	213208257.184000	213207126.31561			
Observation start date	2004-10-03T16:29:53	2004-10-03T16:12:06			
Observation end time	213253257.184000	213254697.59273			
Observation end date	2004-10-04T04:59:53	2004-10-04T05:24:57			
Read mode	TIMED	TIMED			

2.3 Aspect



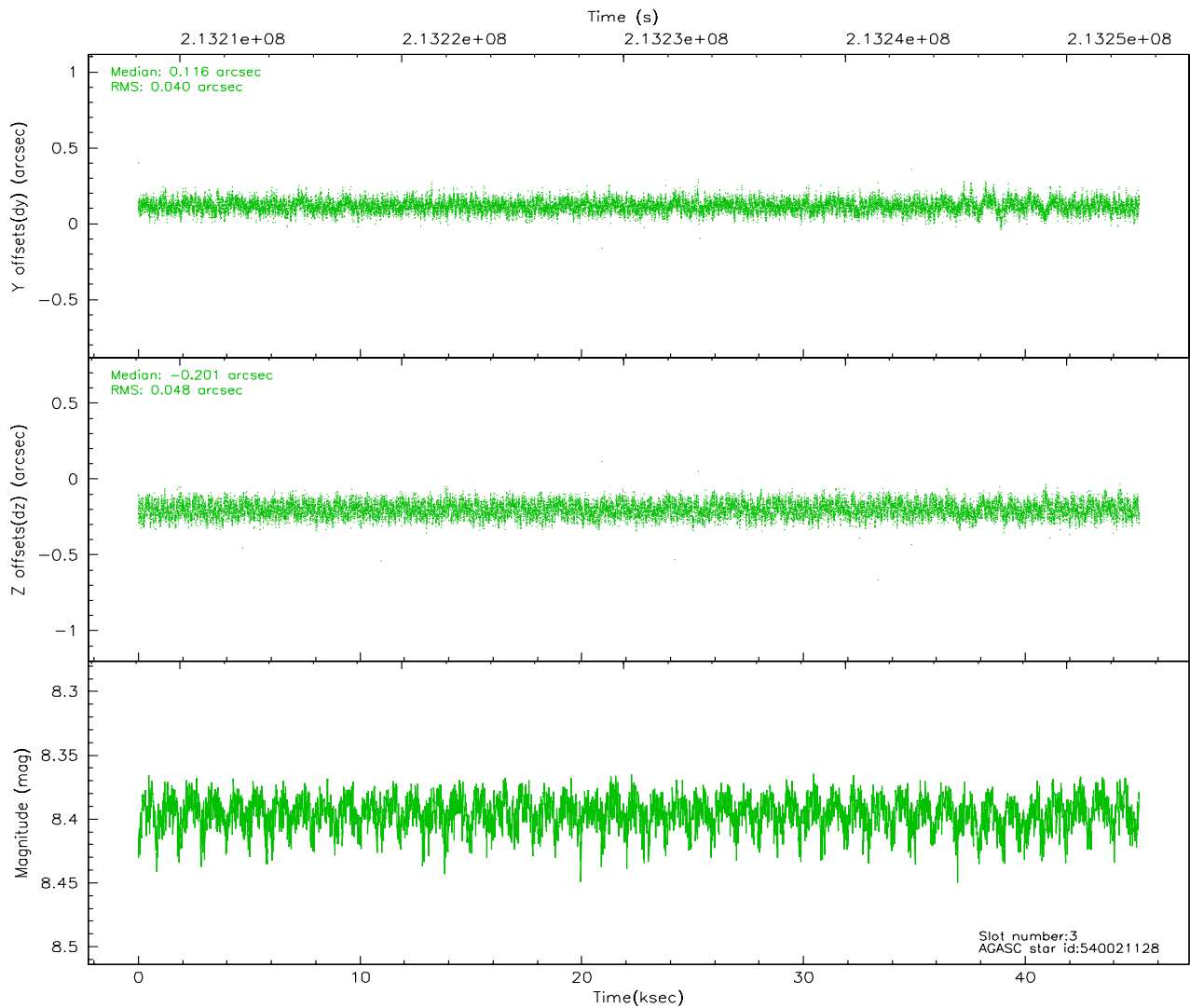
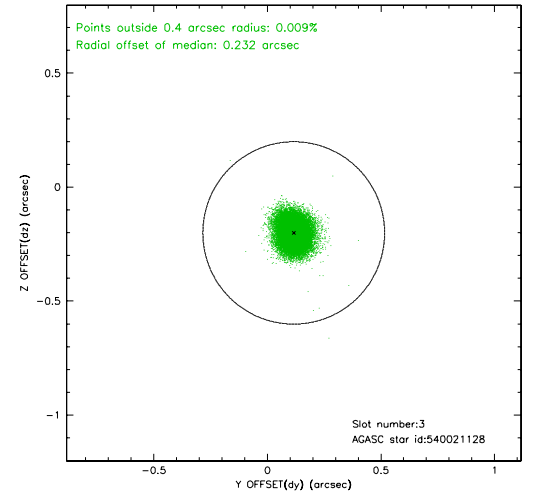
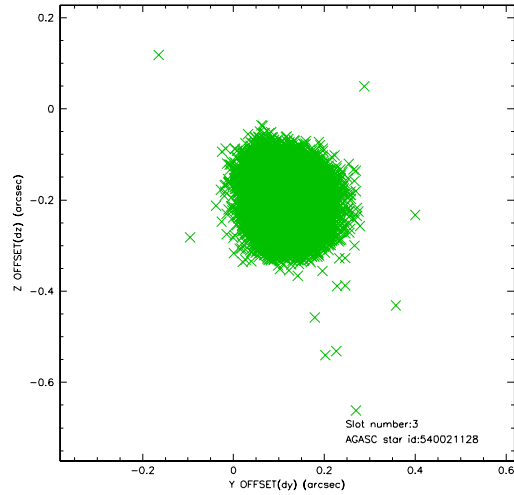


Slot Statistics

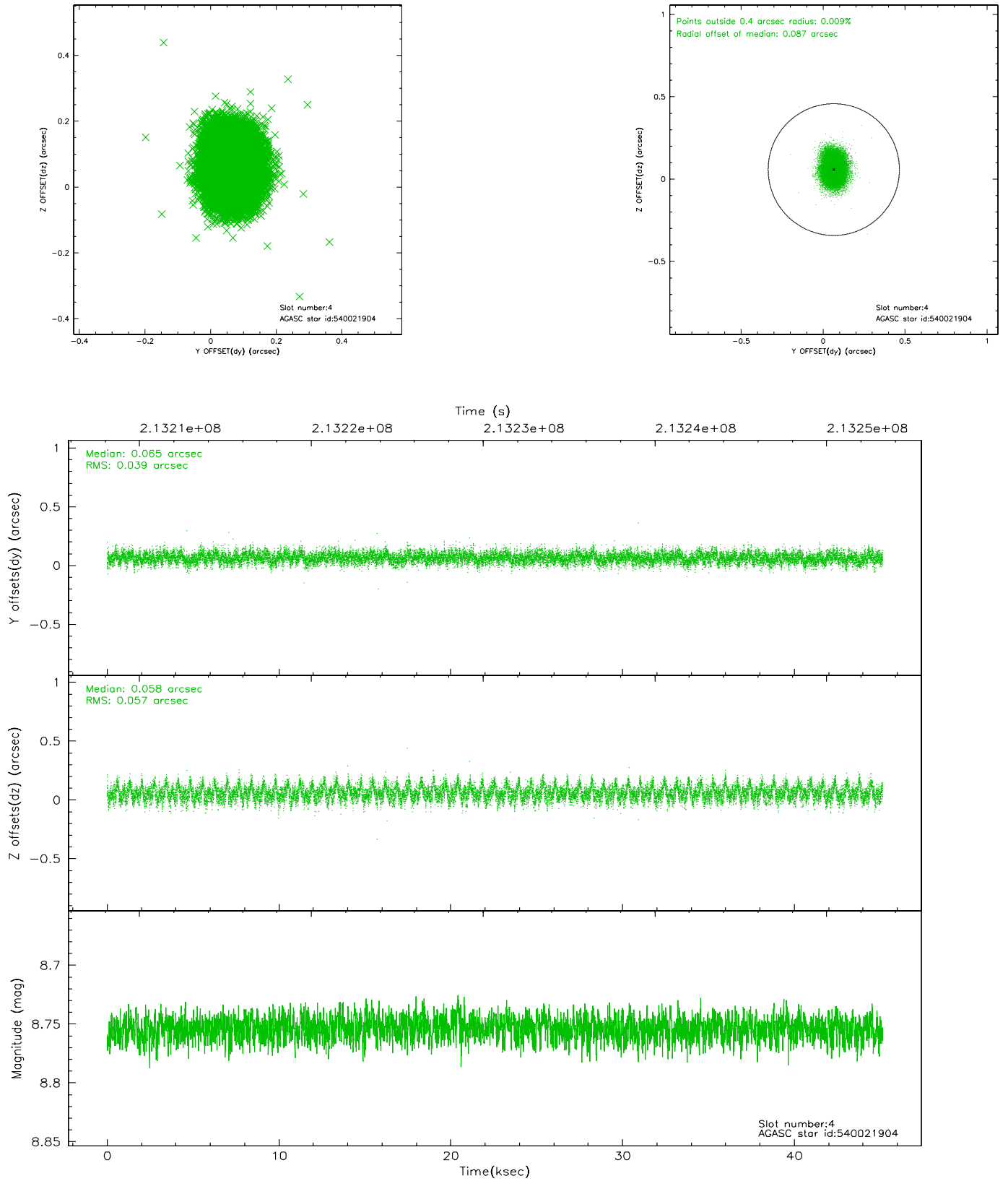
slot	status	id	mag	n_pts	med_dy	med_dz	dr1	dr2	ra	dec	mean_y	mean_z
0	FID	ACIS-S-1	7.18	11011	-0.012	0.011	0.023	0.038	0.000000	0.000000	937.85	-1726.92
1	FID	ACIS-S-5	7.23	11012	-0.052	-0.014	0.015	0.023	0.000000	0.000000	-1811.16	170.65
2	FID	ACIS-S-6	7.35	11012	0.044	0.018	0.031	0.043	0.000000	0.000000	403.50	814.60
3	GUIDE	540021128	8.40	22021	0.116	-0.201	0.068	0.106	114.291258	65.330448	-897.35	-149.86
4	GUIDE	540021904	8.75	22013	0.065	0.058	0.073	0.120	114.203372	65.242134	-1238.67	-103.32
5	GUIDE	540540984	9.09	22011	-0.021	0.102	0.072	0.118	115.004403	66.050286	1880.33	-488.54
6	GUIDE	540548768	8.50	21986	-0.023	-0.191	0.065	0.103	113.788166	65.673634	107.10	889.81
7	GUIDE	540153792	9.34	22010	-0.139	0.235	0.119	0.195	115.938716	65.425474	98.46	-2436.27

2.4 Star Slots

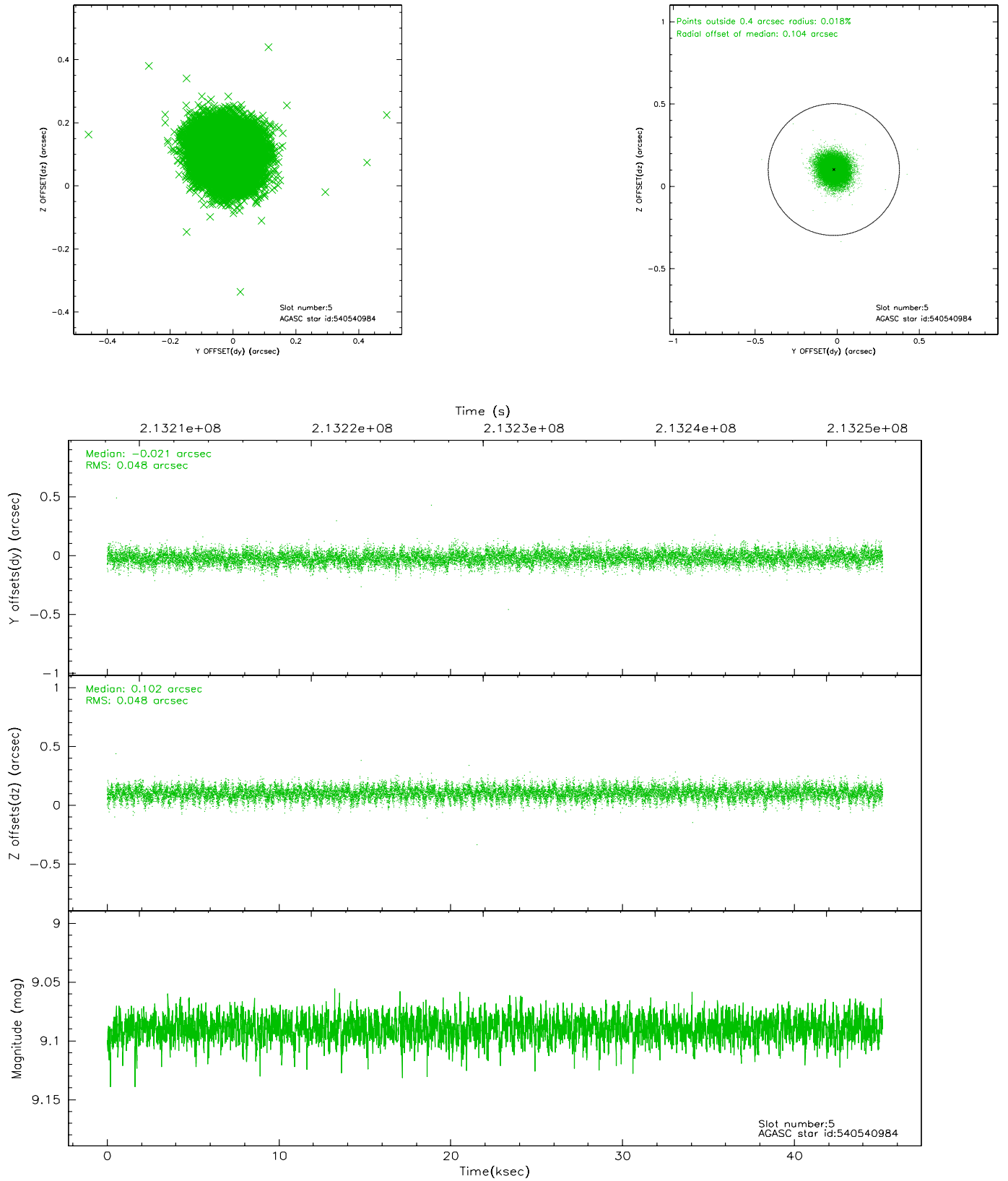
2.4.1 Slot 3



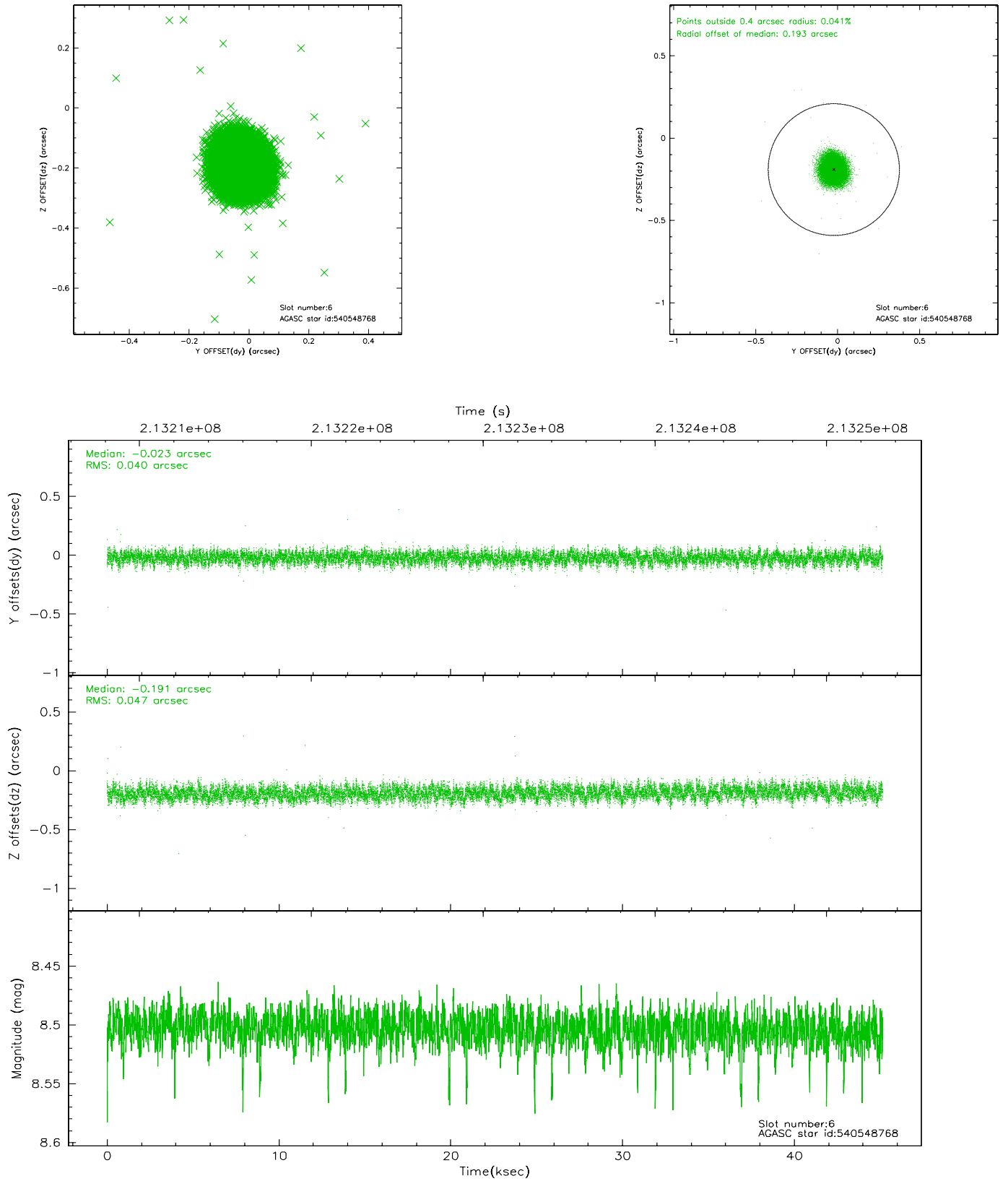
2.4.2 Slot 4



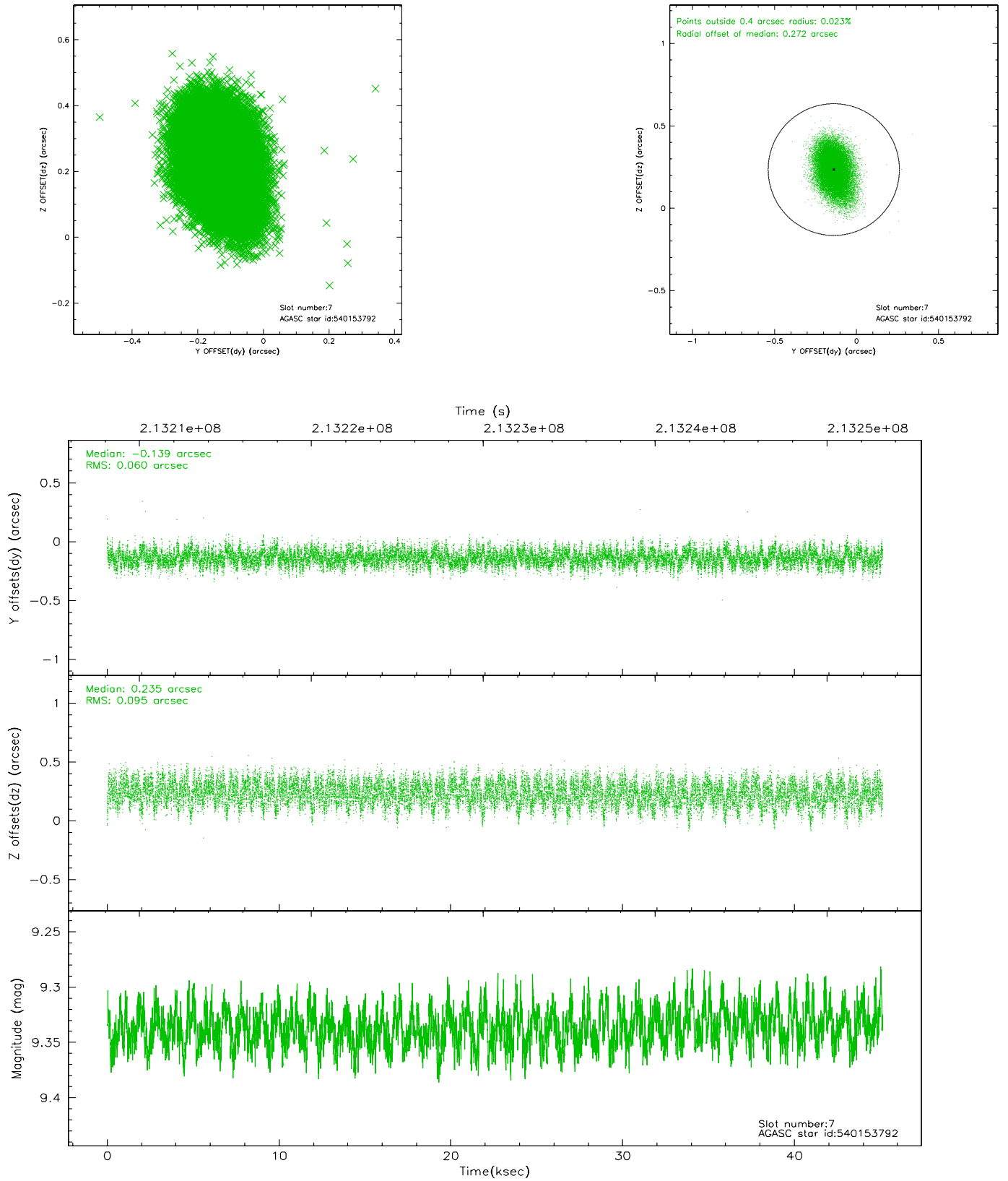
2.4.3 Slot 5



2.4.4 Slot 6

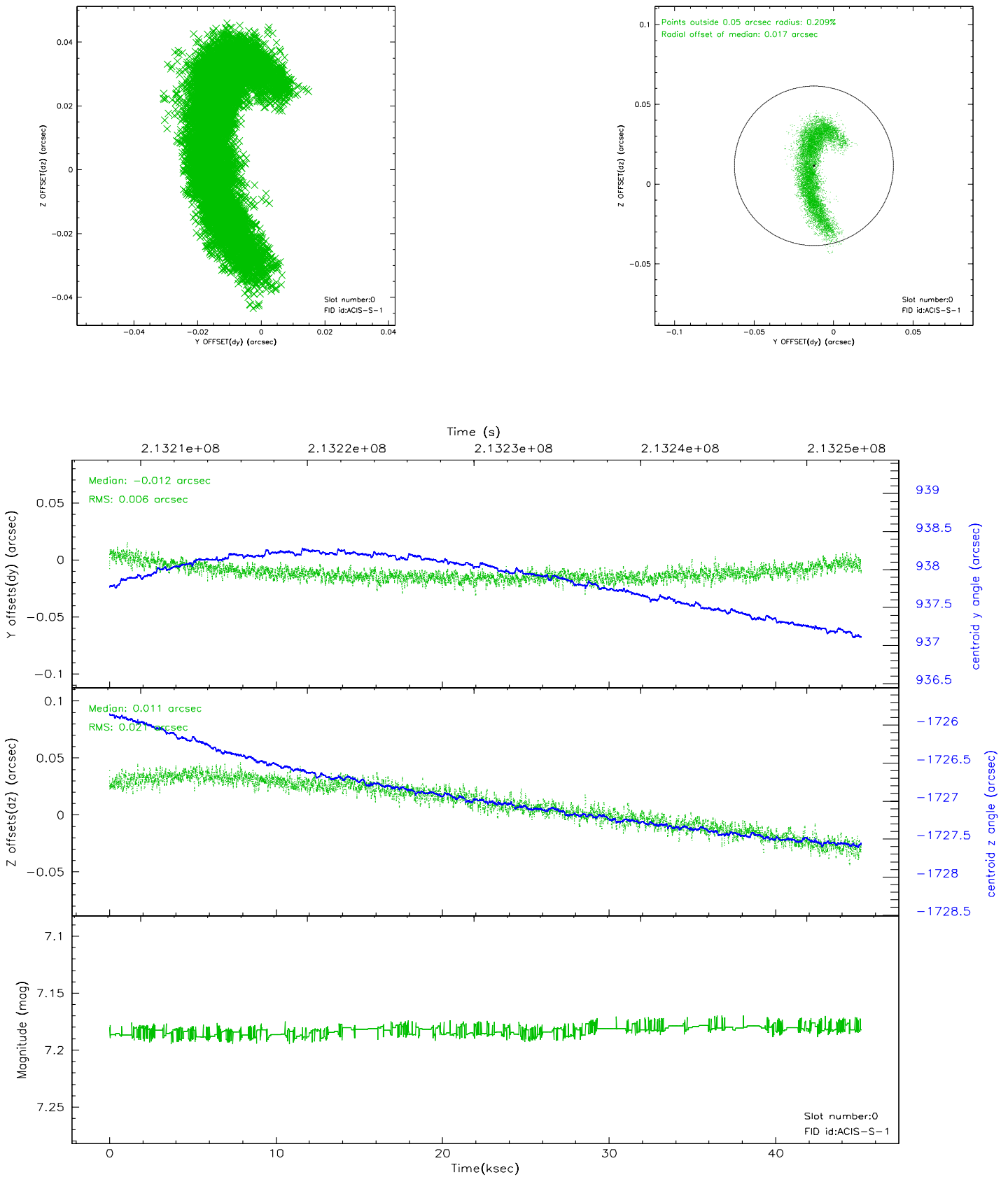


2.4.5 Slot 7

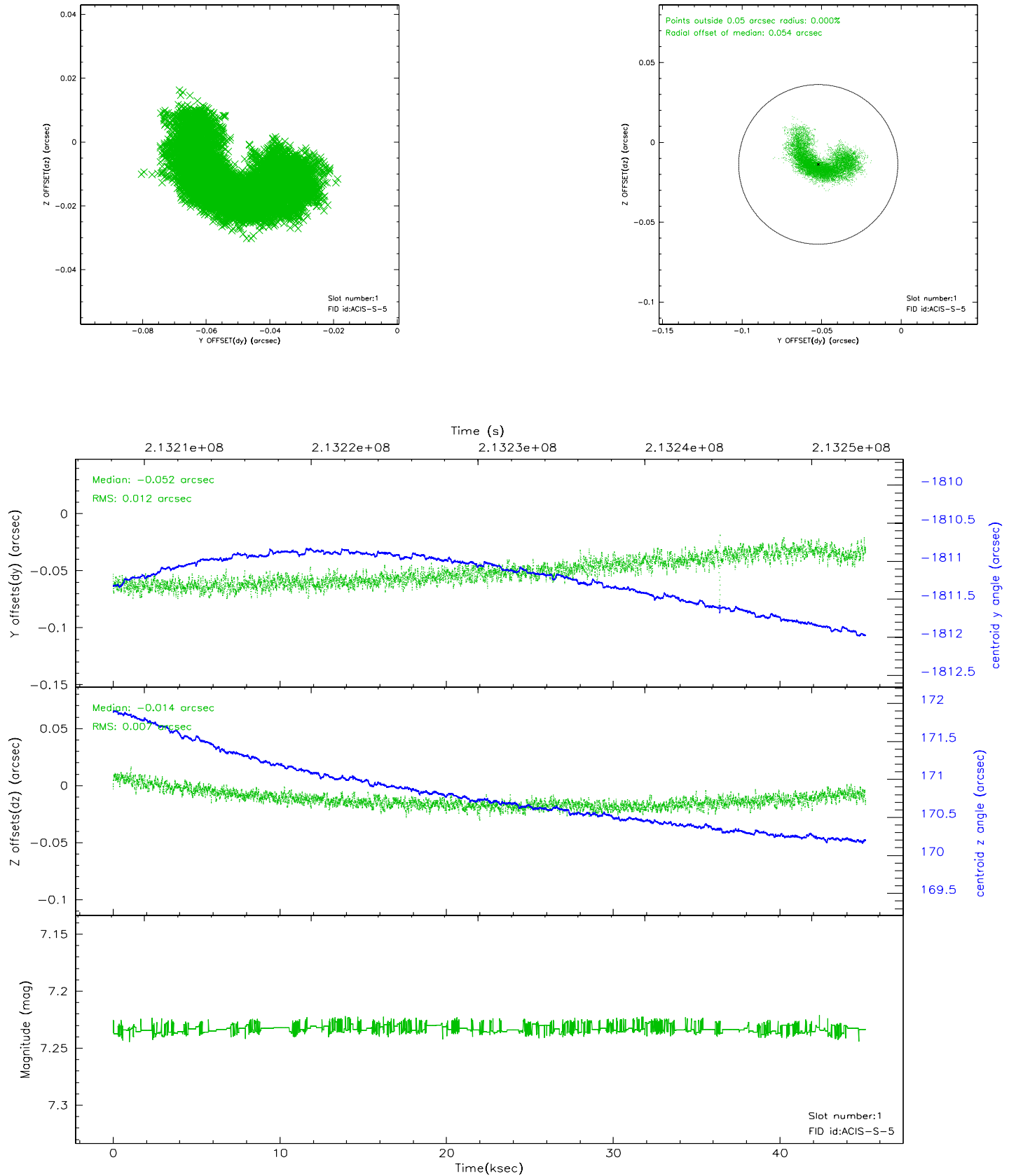


2.5 FID Slots

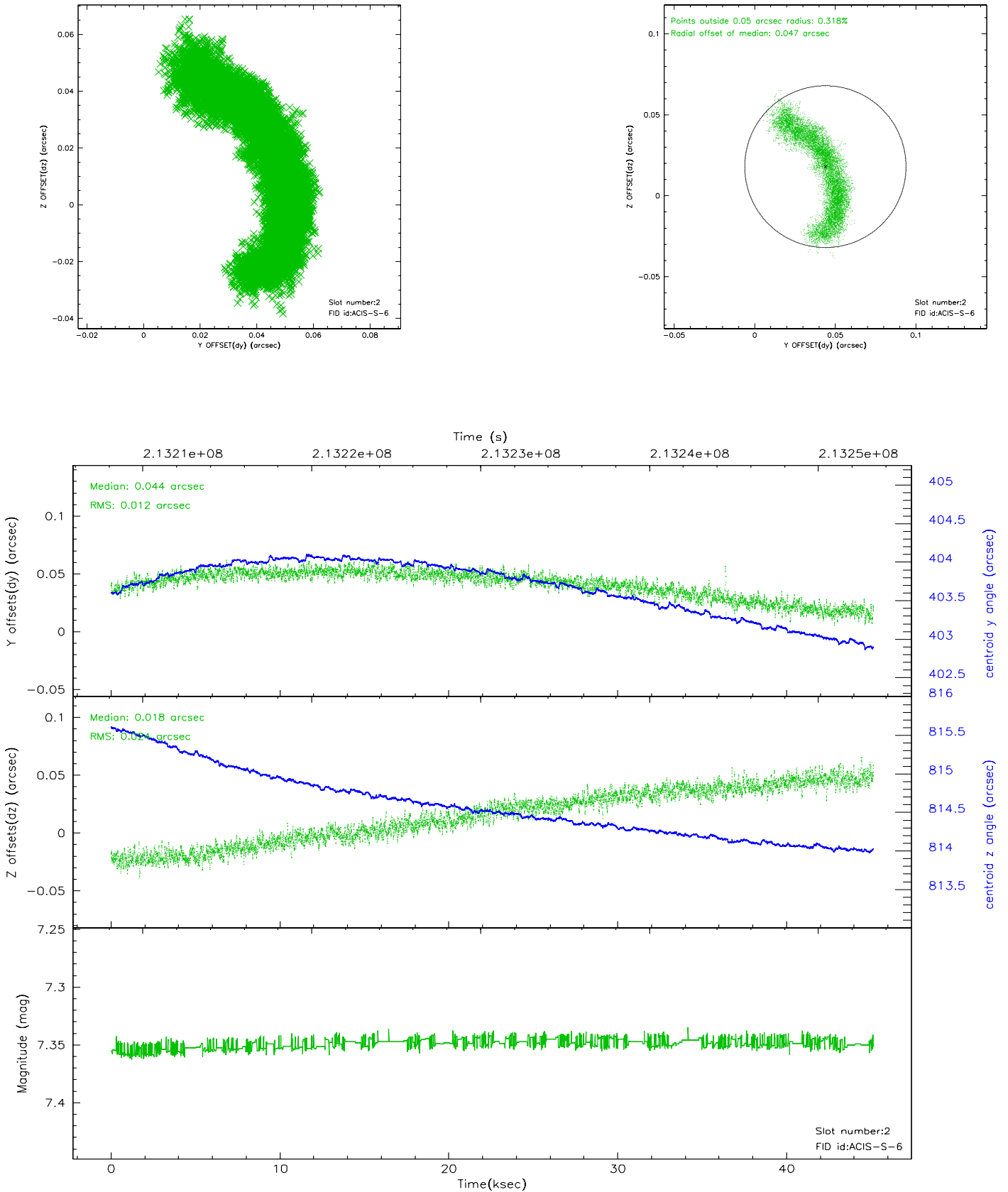
2.5.1 Slot 0



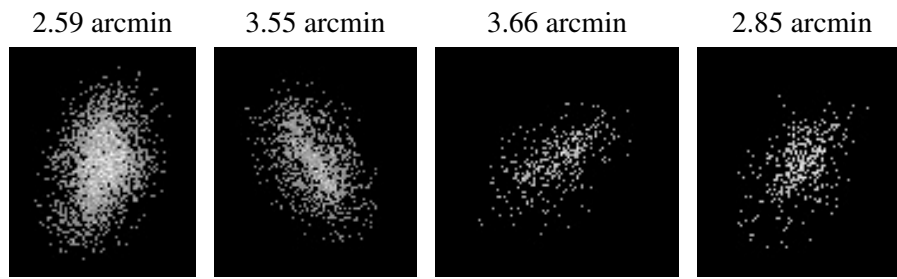
2.5.2 Slot 1



2.5.3 Slot 2



3 Point Sources



A Summary

A.1 Status

V&V Scientist	Beth Sundheim
V&V Date (YYYY-MM-DD)	2006.04.17
V&V Edition	1
V&V Disposition and Status	OK
V&V Charge Time	45.142

A.2 Comments

Focal plane temperature is elevated during initial ~6 ksec of observation.