

V&V Reference Report

L2 ASCDS Version : 8.4.5

Observation 4619 - L2 Version 3
Chandra X-Ray Center

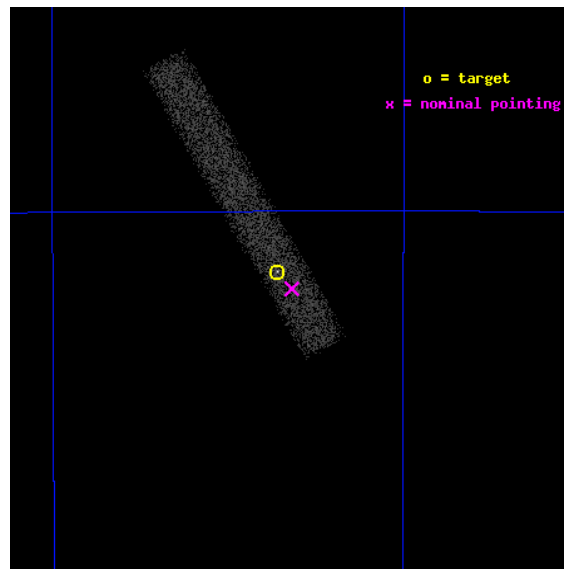
L2 Processing Date : Nov 11 2012

Contents

1	Front	2
2	OBI	3
2.1	OBI	3
2.1.1	Images	3
2.1.2	Bias	3
2.1.3	Parameters	4
2.1.4	Events	4
2.2	Compared Parameters	5
2.3	Aspect	6
2.4	Star Slots	9
2.4.1	Slot 3	9
2.4.2	Slot 4	10
2.4.3	Slot 5	11
2.4.4	Slot 6	12
2.4.5	Slot 7	13
2.5	FID Slots	14
2.5.1	Slot 0	14
2.5.2	Slot 1	15
2.5.3	Slot 2	16
A	Summary	17
A.1	Status	17
A.2	Comments	17

1 Front

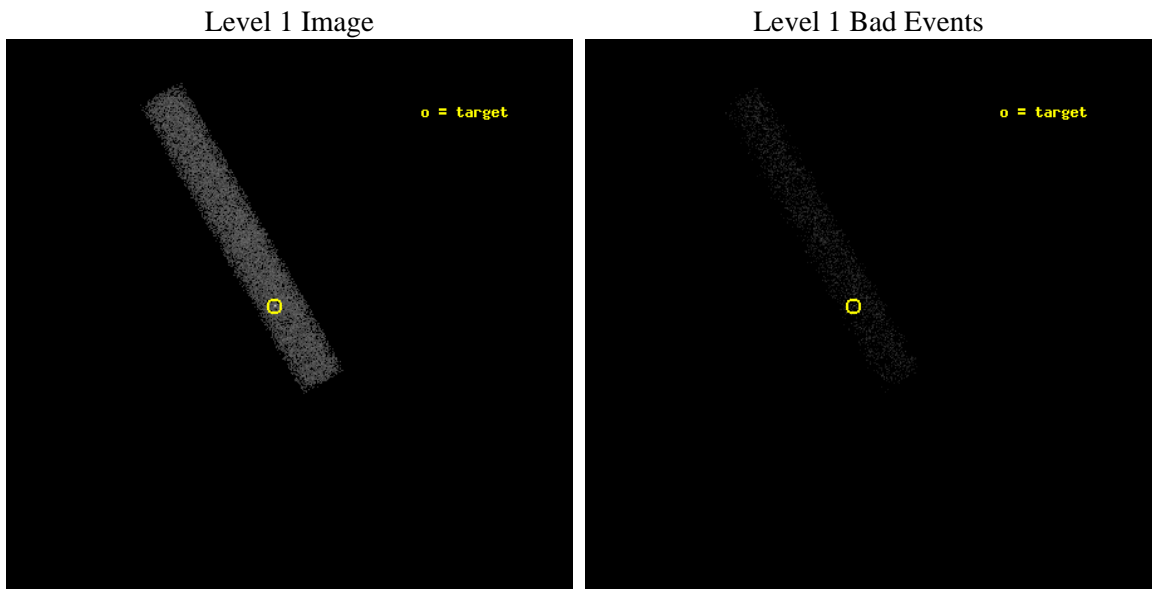
seq_num	500444	Sequence number
obs_id	4619	Observation id
title	PRECISION TIMING OF A POSSIBLE NEW ANOMALOUS X-RAY PULSAR	Proposal
observer	Prof. Bryan Gaensler	Principal investigator
object	CXOU J010043.1-721134	Source name
dtcycle	0	
cycle	P	events from which exps? Prim/Second/Both
ra_targ	15.179583	Observer's specified target RA [deg]
dec_targ	-72.192722	Observer's specified target Dec [deg]
ra_nom	15.159174906338	Nominal RA [deg]
dec_nom	-72.200146691364	Nominal Dec [deg]
roll_nom	240.14222666043	Nominal Roll [deg]
revision	3	Processing version of data
ontime	16583.200247079	Sum of GTIs [s]
livetime	15040.08729102	Livetime [s]
ontime7	16583.200247079	Sum of GTIs [s]
l2events	9874	Number of level 2 events



2 OBI

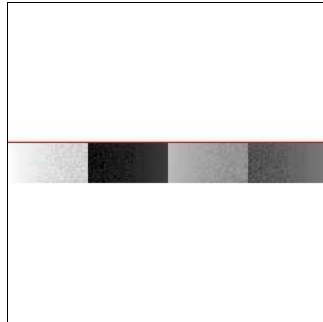
2.1 OBI

2.1.1 Images



2.1.2 Bias

Chip 7



2.1.3 Parameters

obi_num	0	Obi number	sched_exp_time	16437.950000	[s] Scheduled observation exposure time
ascdsver	8.4.5	Processing system revision	ontime	16583.200247079	Sum of GTIs [s]
caldsver	4.5.2	 	ontime7	16583.200247079	Sum of GTIs [s]
date	2012-11-11T16:54:33	Date and time of file creation	l1events	22104	Number of level 1 events
revision	3	Processing version of data			

2.1.4 Events

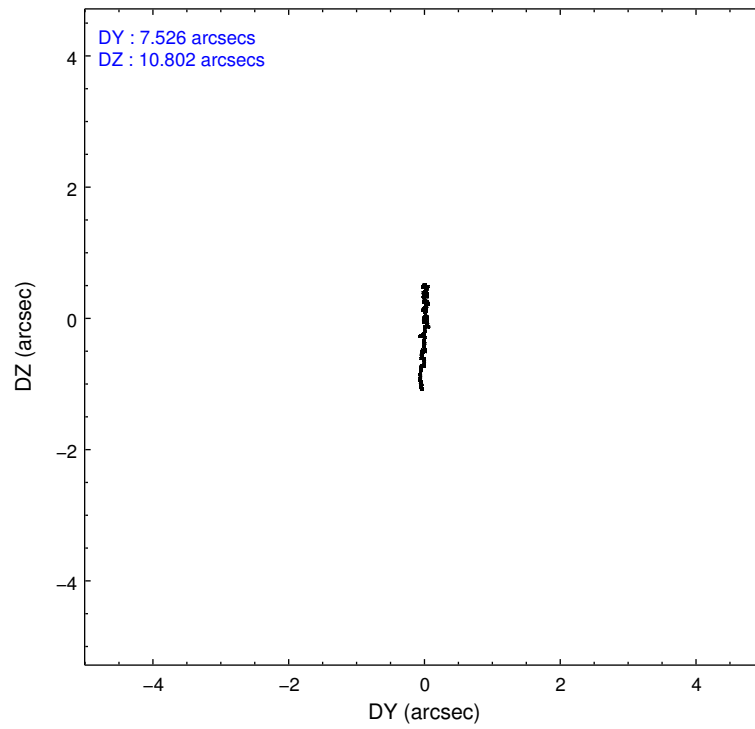
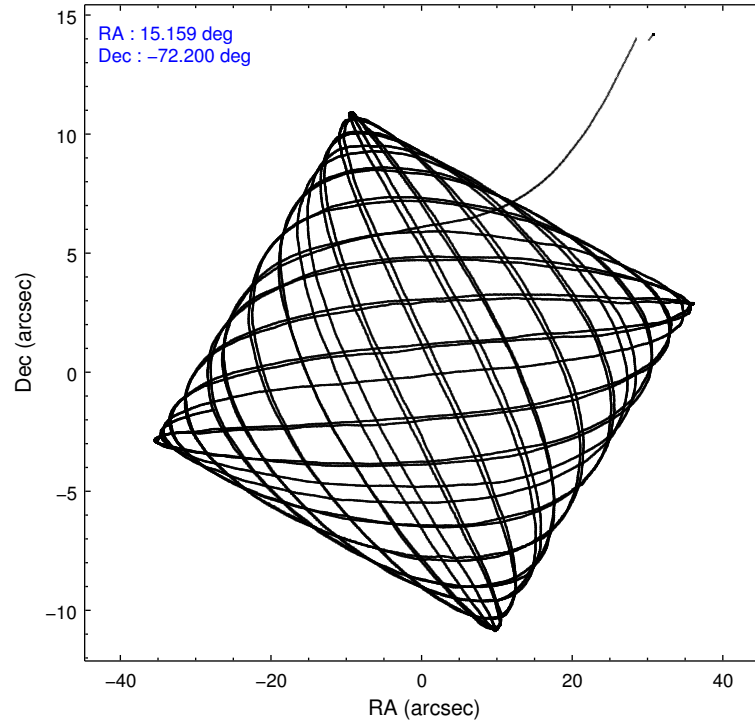
	ccd 7
level 1 events	22104
rejected events	11913
rejected %	53%

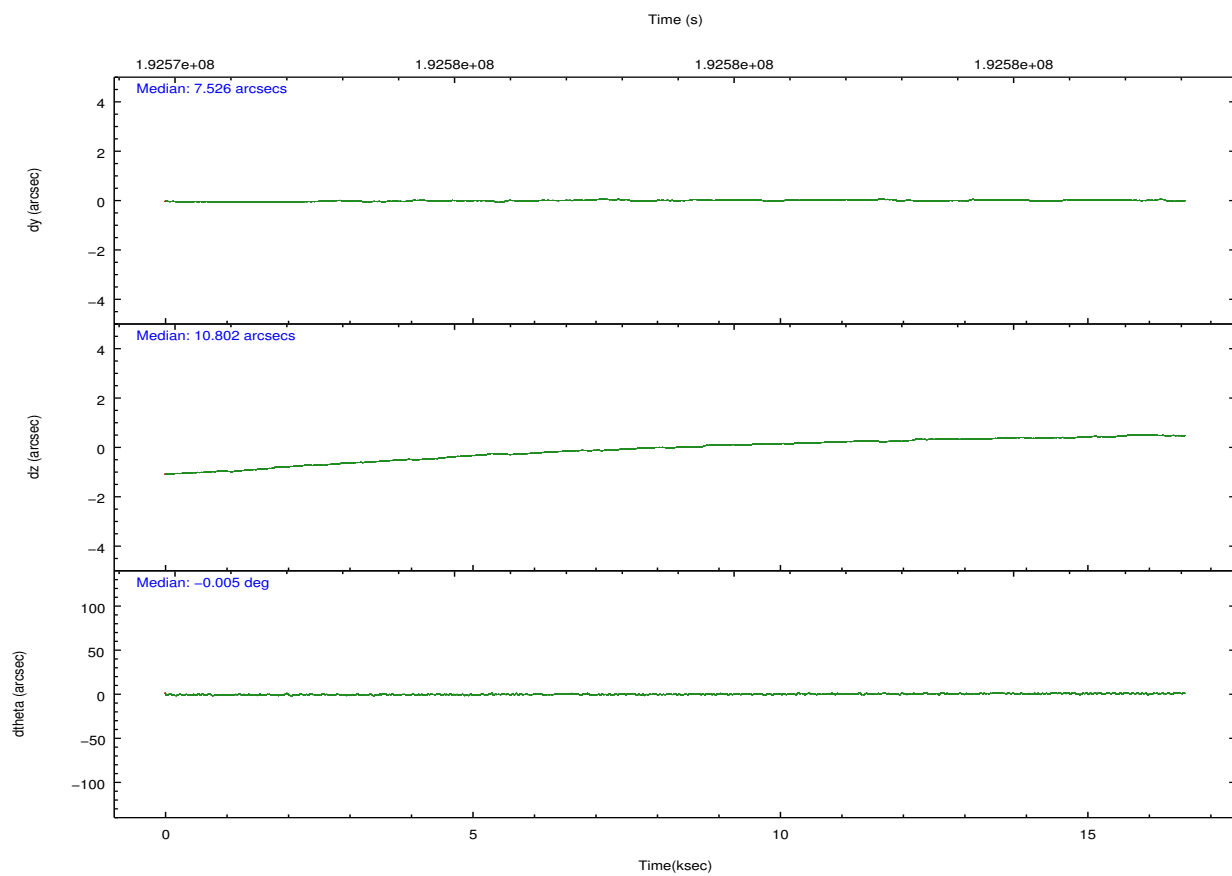
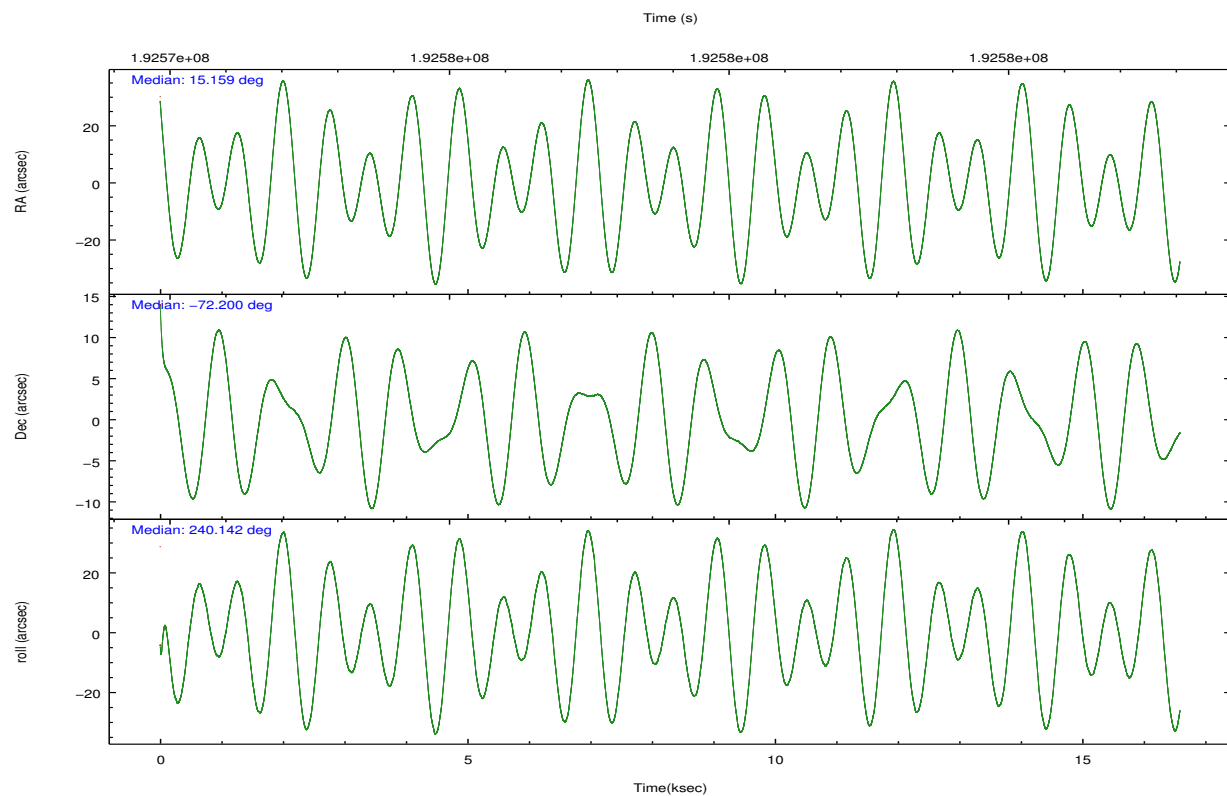
	ccd 7
grade 0 events	1540
	6%
grade 1 events	20
	0%
grade 2 events	2197
	9%
grade 3 events	1434
	6%
grade 4 events	1313
	5%
grade 5 events	1907
	8%
grade 6 events	4558
	20%
grade 7 events	9135
	41%

2.2 Compared Parameters

Parameter	Planned	Actual	Parameter	Planned	Actual
Instrument	ACIS	ACIS	Obspar format version number	7	7
Detector	ACIS-7	ACIS-7	Obspar file type	PREDICTED	ACTUAL
Grating	NONE	NONE	Obspar update status	NONE	UPDATED
Data mode	VFAINT	VFAINT	Number of optional ACIS chips dropped	0	0
Observation mode	POINTING	POINTING	On-chip summing requested	N	N
[deg] Pointing RA	15.157861	15.15917490633805	Subarray requested	CUSTOM	1/8
[deg] Pointing Dec	-72.172904	-72.20014669136351	Subarray start row	449	449
[deg] Pointing Roll	239.984374	240.1422266604315	Subarray row count	128	128
[mm] SIM focus pos	-0.684267	-0.6828225247311905	Alternating exposures requested	N	N
[mm] SIM defocus	0	0.001444936568705701	[s] Primary exposure time	0.000000	0.4
[mm] SIM translation stage pos	-190.132523	-190.1425803651734			
[mm] SIM translation stage offset	0	0.01005778216563158			
[s] Observation start time (MET)	192570796.184000	192568816.00291			
Observation start date	2004-02-07T19:52:12	2004-02-07T19:20:16			
[s] Observation end time (MET)	192587234.184000	192587548.39123			
Observation end date	2004-02-08T00:26:10	2004-02-08T00:32:28			
Read mode	TIMED	TIMED			

2.3 Aspect



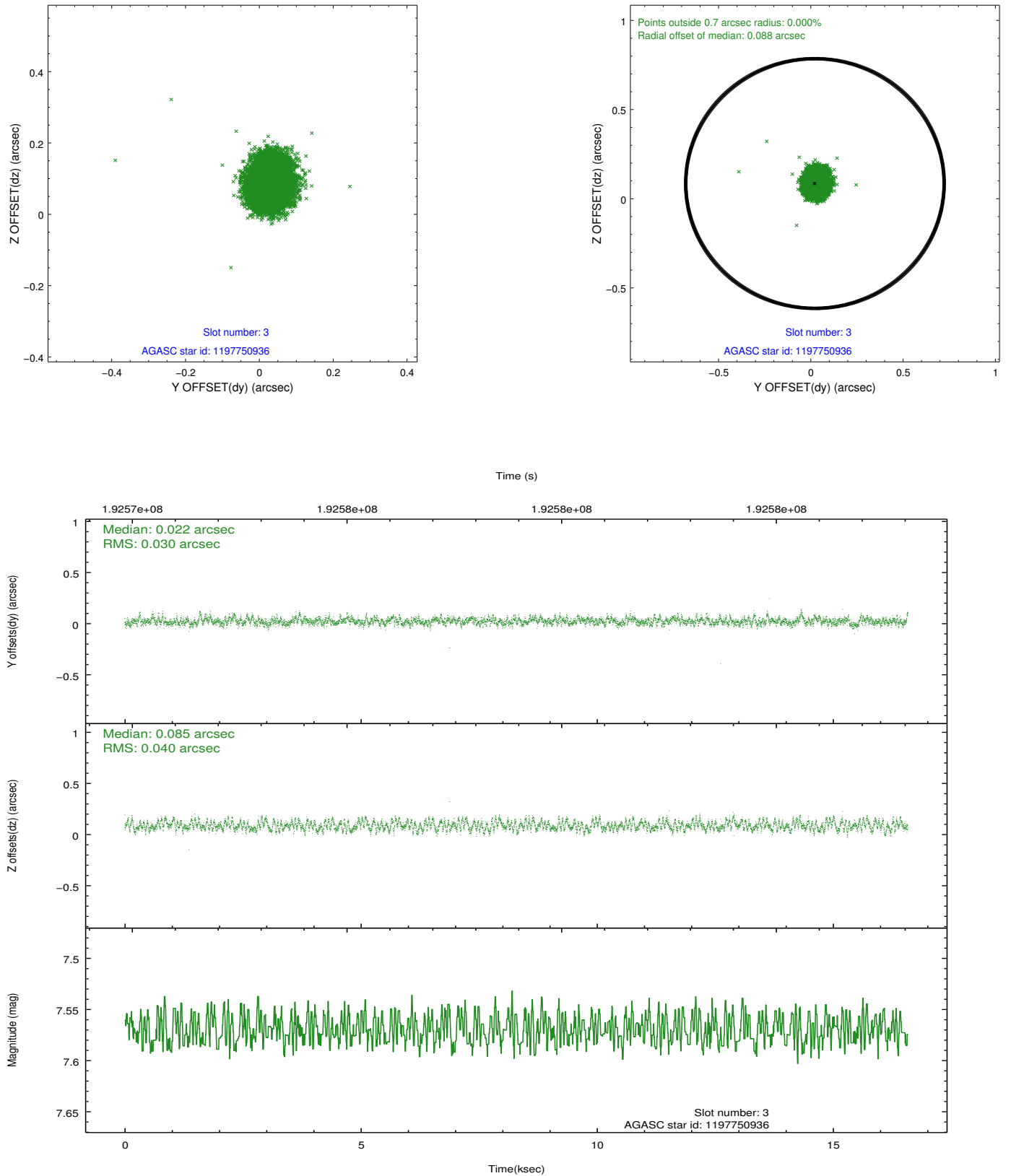


Slot Statistics

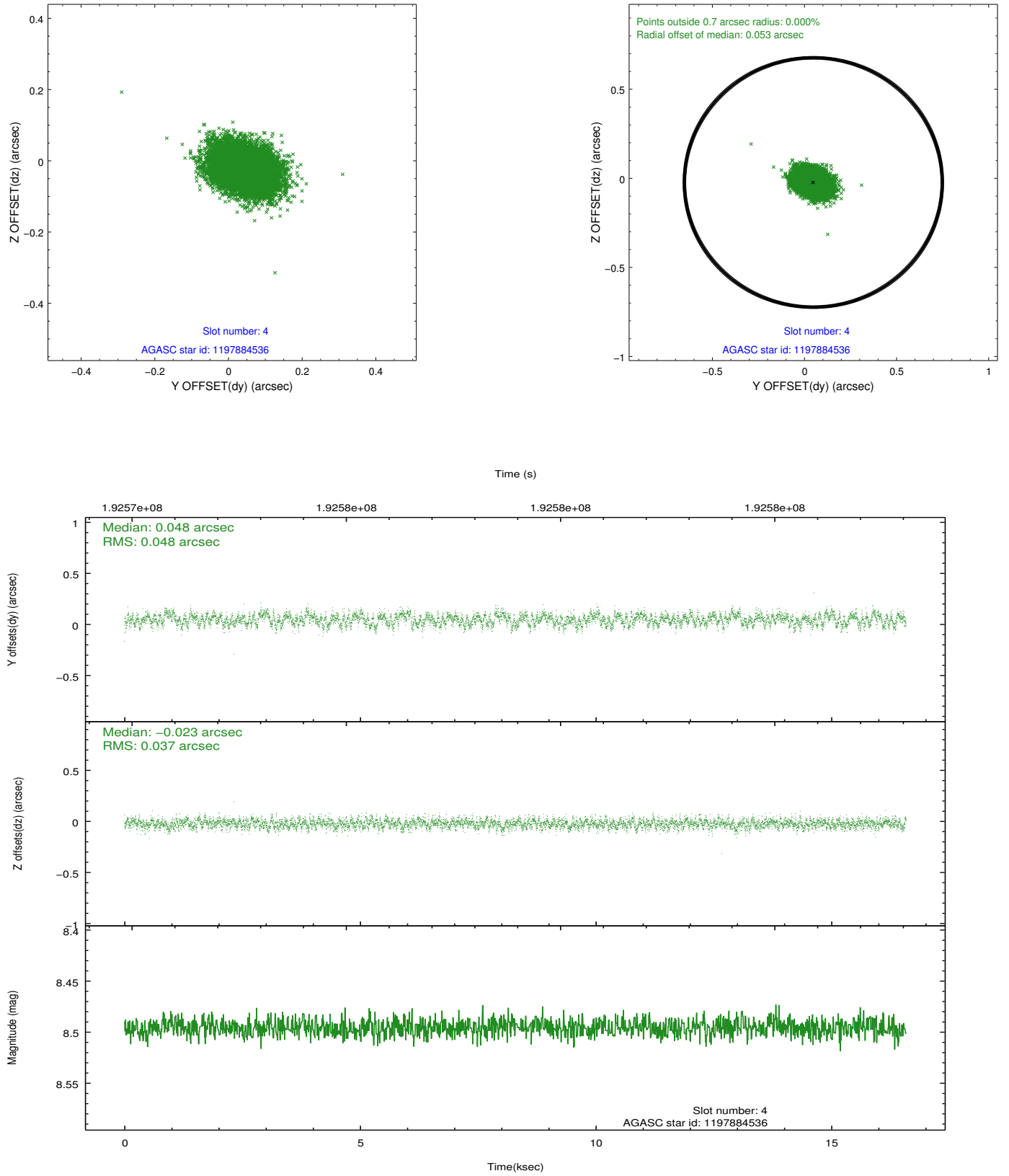
slot	status	id	mag	n_pts	med_dy	med_dz	dr1	dr2	ra	dec	mean_y	mean_z
0	FID	ACIS-S-1	7.18	4046	0.016	-0.053	0.021	0.049	0.000000	0.000000	935.73	-1727.60
1	FID	ACIS-S-2	7.11	4046	-0.066	-0.002	0.015	0.025	0.000000	0.000000	-760.11	-1732.35
2	FID	ACIS-S-4	7.20	4046	0.025	0.061	0.012	0.026	0.000000	0.000000	2152.89	176.38
3	GUIDE	1197750936	7.57	8090	0.022	0.085	0.053	0.083	15.387940	-71.549550	-2073.70	-894.87
4	GUIDE	1197884536	8.50	8091	0.048	-0.023	0.065	0.103	17.160729	-71.835289	-2144.54	1356.90
5	GUIDE	1197884712	8.30	8089	0.040	0.041	0.055	0.089	16.087398	-72.252690	-254.93	1031.33
6	GUIDE	1197885328	7.22	8090	0.012	-0.077	0.052	0.080	16.283090	-71.733943	-1993.57	315.37
7	GUIDE	1198189696	7.35	8089	-0.121	-0.028	0.044	0.069	15.223750	-72.697522	1599.72	1006.26

2.4 Star Slots

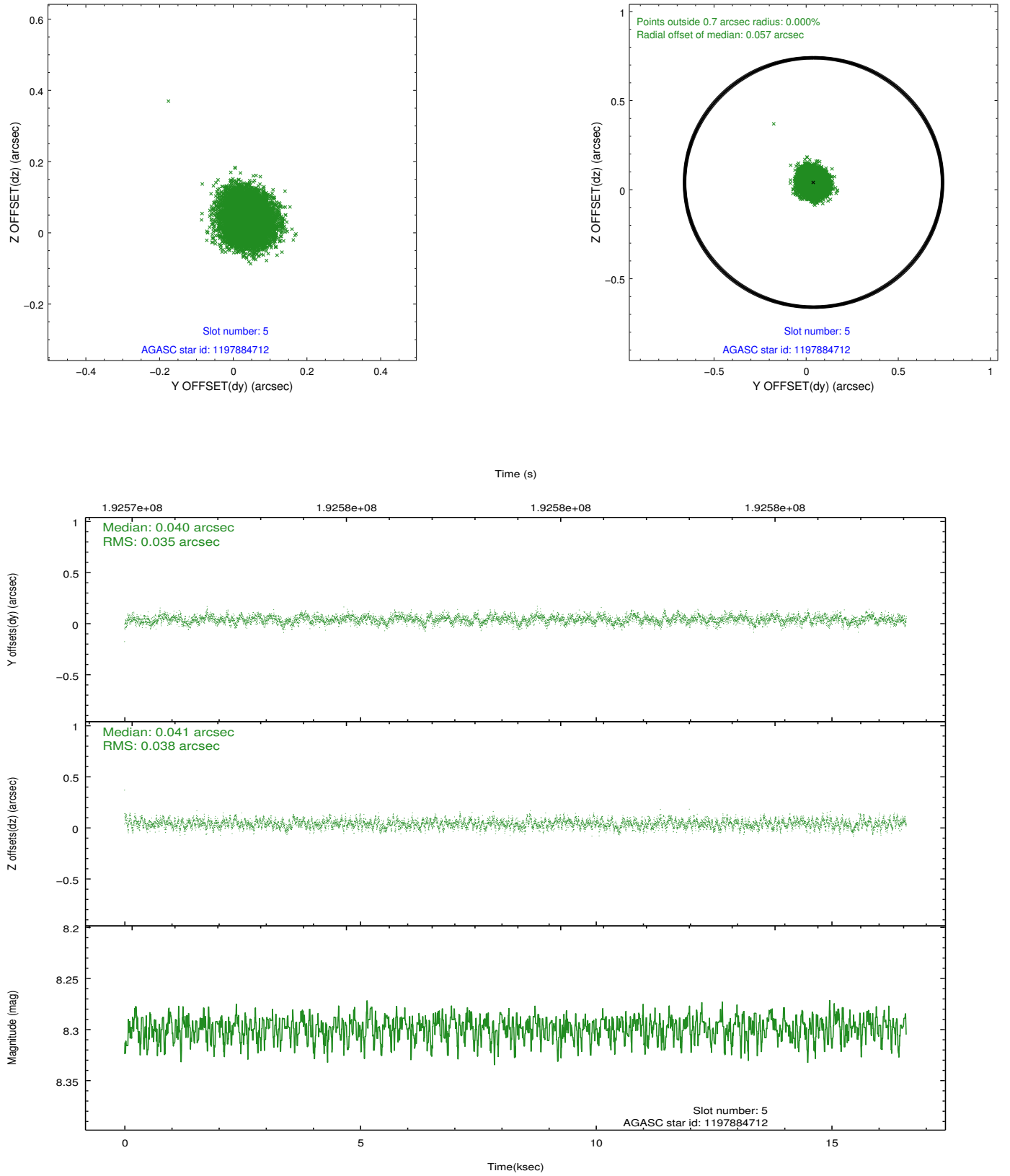
2.4.1 Slot 3



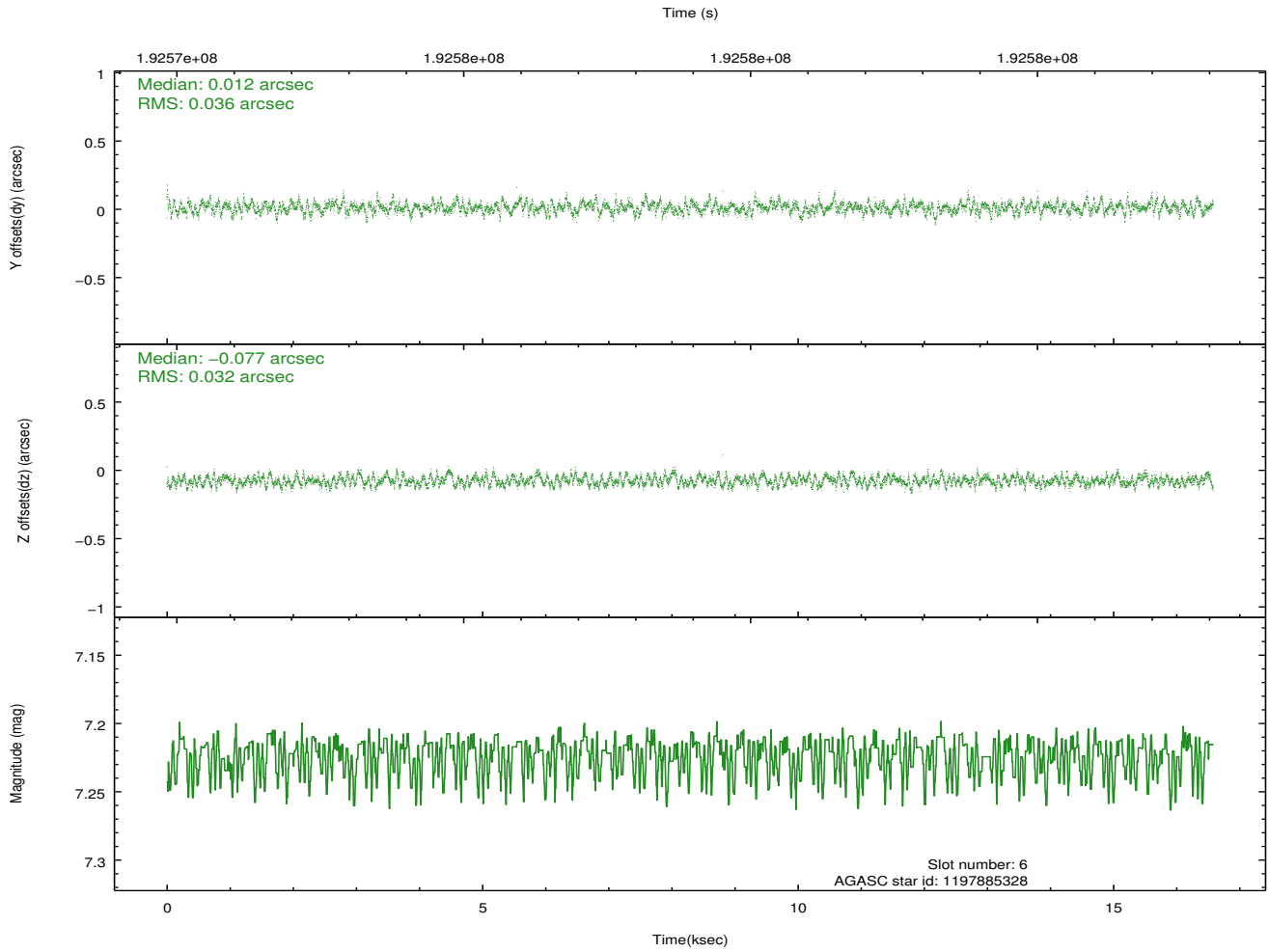
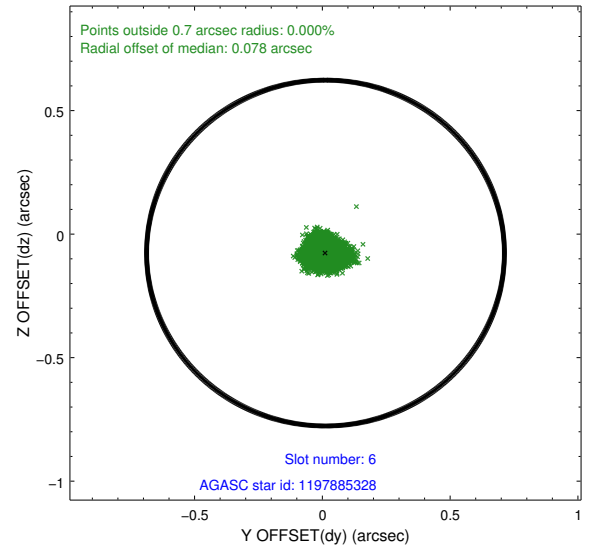
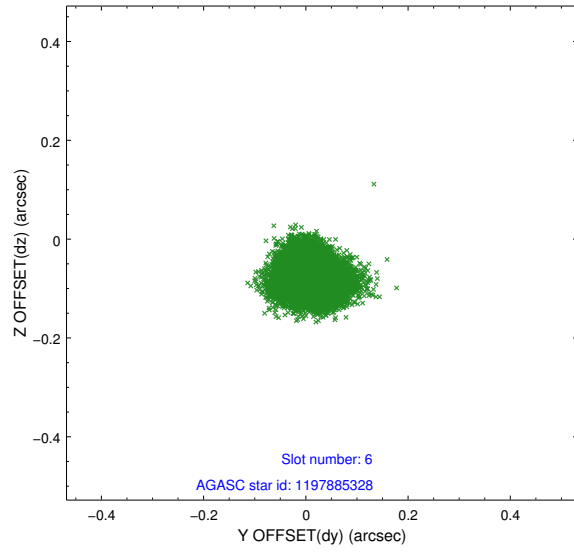
2.4.2 Slot 4



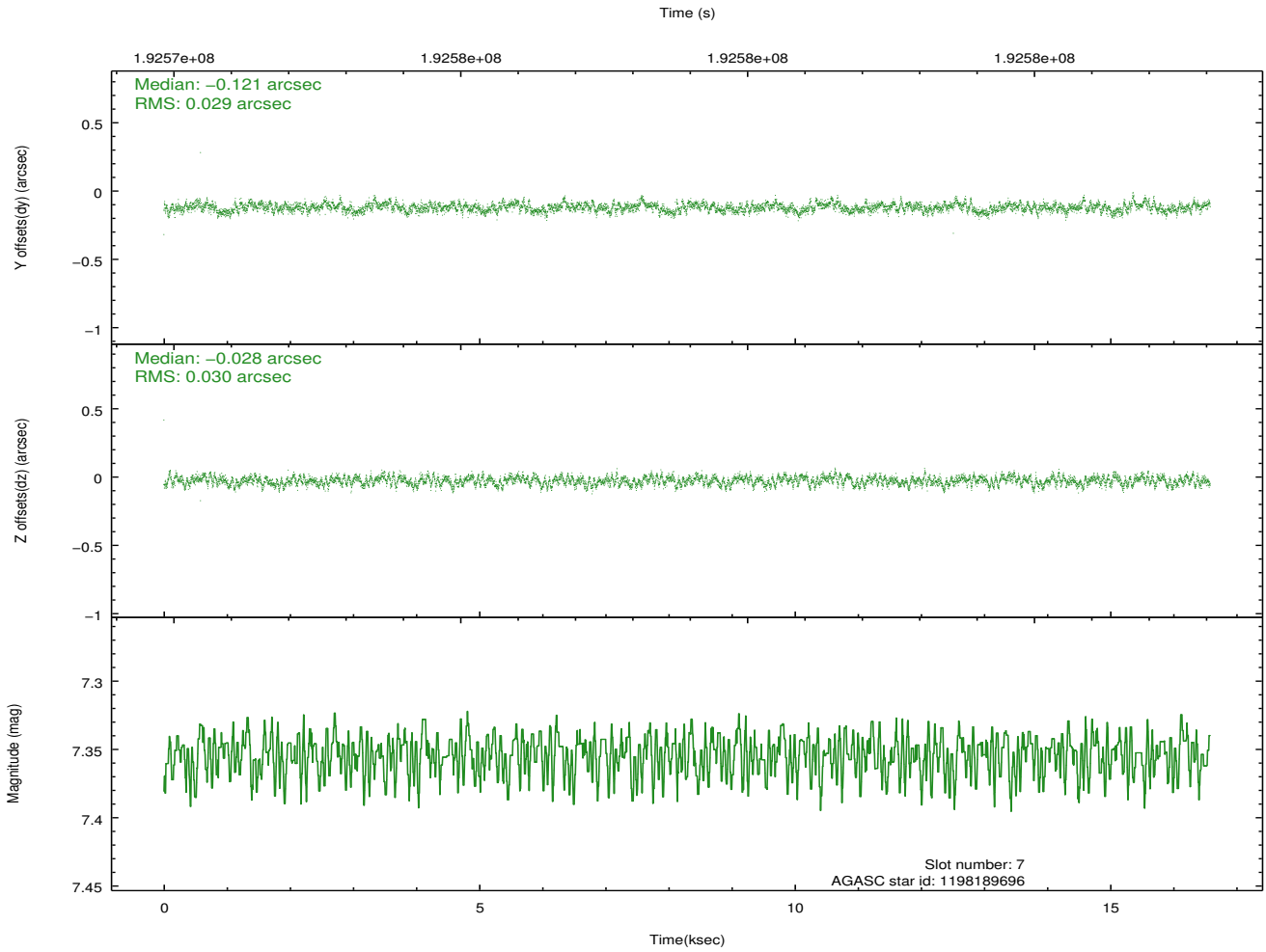
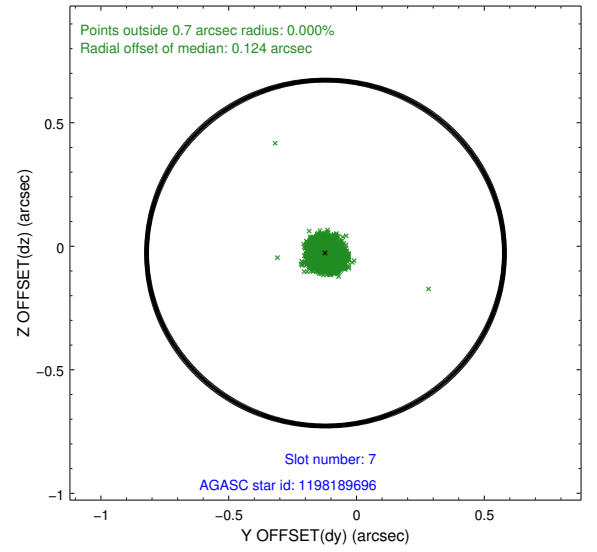
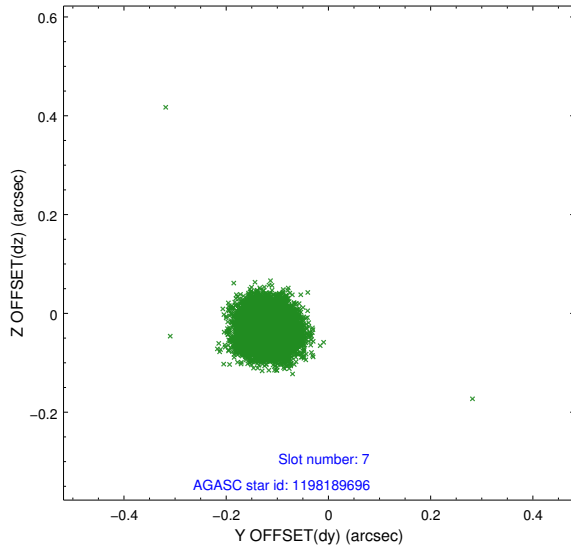
2.4.3 Slot 5



2.4.4 Slot 6

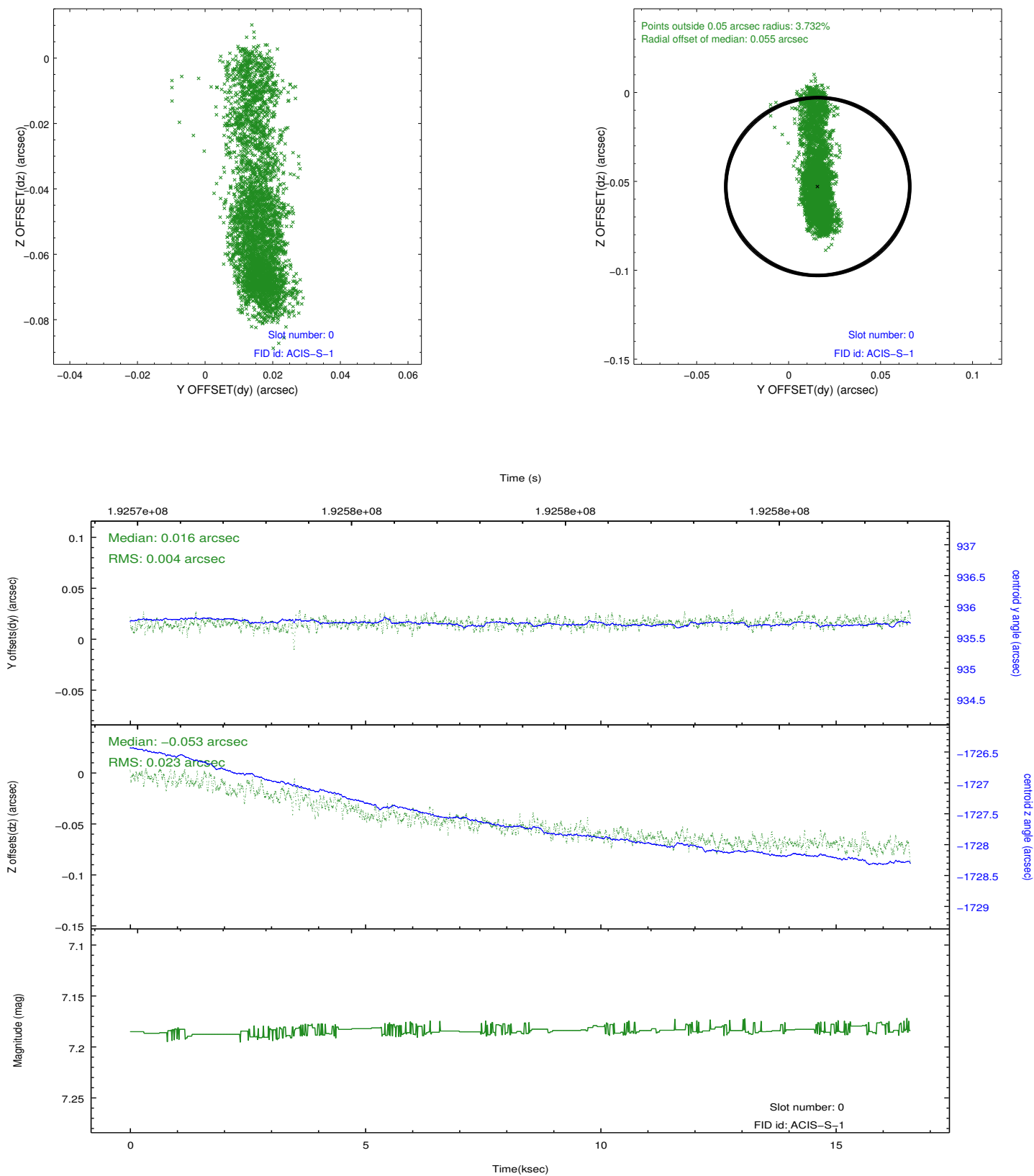


2.4.5 Slot 7

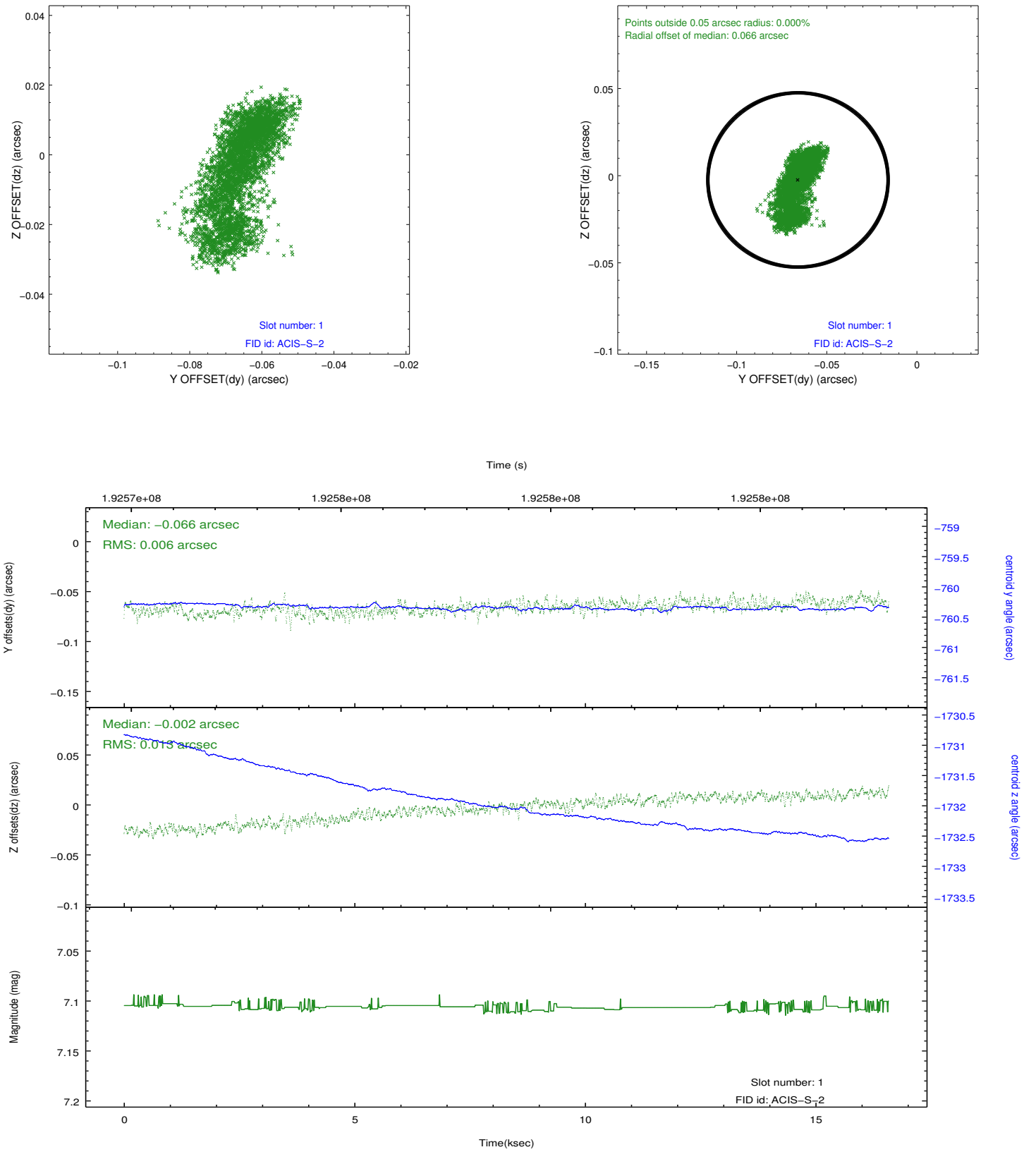


2.5 FID Slots

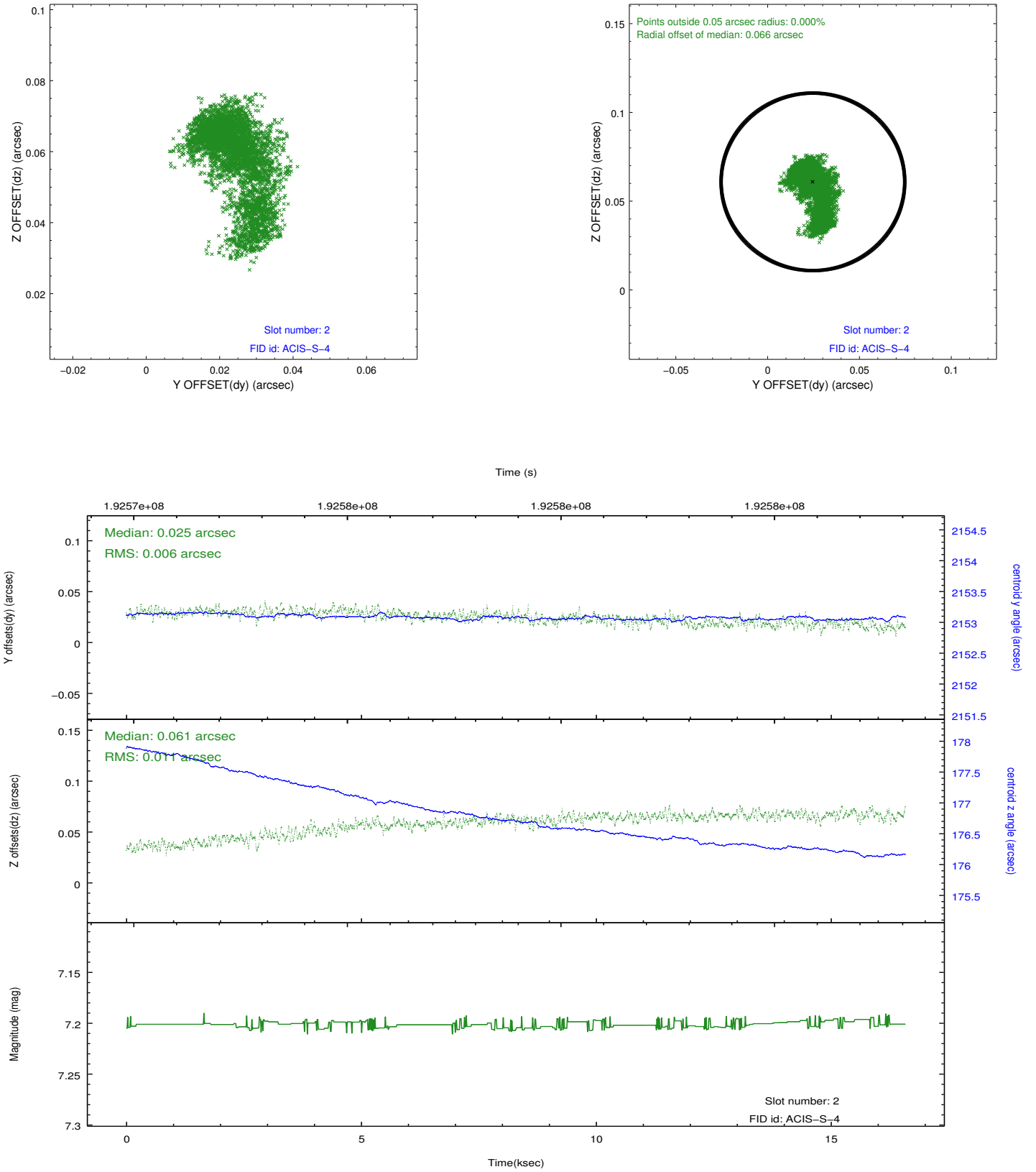
2.5.1 Slot 0



2.5.2 Slot 1



2.5.3 Slot 2



A Summary

A.1 Status

V&V Scientist	Jen Lauer
V&V Date (YYYY-MM-DD)	2012.12.11
V&V Edition	1
V&V Disposition and Status	OK
V&V Charge Time	16.583

A.2 Comments