

# V&V Reference Report

## L2 ASCDS Version : 7.6.7.2

Observation 4616 - L2 Version 001  
Chandra X-Ray Center

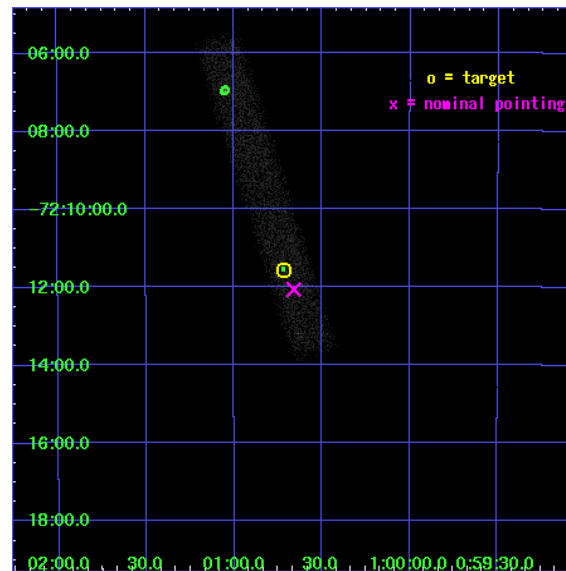
L2 Processing Date : Jun 7 2006

## Contents

<b>1</b>	<b>Front</b>	<b>2</b>
<b>2</b>	<b>OBI</b>	<b>3</b>
2.1	OBI . . . . .	3
2.1.1	Images . . . . .	3
2.1.2	Bias . . . . .	3
2.1.3	Parameters . . . . .	4
2.1.4	Events . . . . .	4
2.2	Compared Parameters . . . . .	5
2.3	Aspect . . . . .	6
2.4	Star Slots . . . . .	9
2.4.1	Slot 3 . . . . .	9
2.4.2	Slot 4 . . . . .	10
2.4.3	Slot 5 . . . . .	11
2.4.4	Slot 6 . . . . .	12
2.4.5	Slot 7 . . . . .	13
2.5	FID Slots . . . . .	14
2.5.1	Slot 0 . . . . .	14
2.5.2	Slot 1 . . . . .	15
2.5.3	Slot 2 . . . . .	16
<b>3</b>	<b>Point Sources</b>	<b>17</b>
<b>A</b>	<b>Summary</b>	<b>18</b>
A.1	Status . . . . .	18
A.2	Comments . . . . .	18

# 1 Front

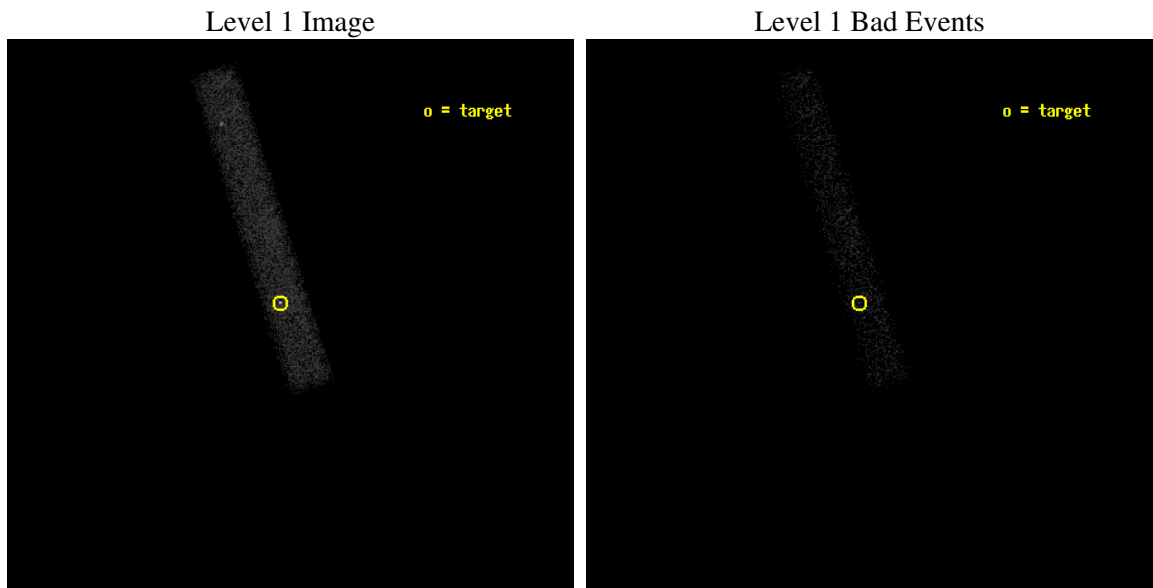
seq_num	500441
obs_id	4616
title	PRECISION TIMING OF A POSSIBLE NEW ANOMALOUS X-RAY PULSAR
observer	Prof. Bryan Gaensler
object	CXOU J010043.1-721134
dtcycle	0
cycle	P
ra_targ	15.179583
dec_targ	-72.192722
ra_nom	15.165024597382
dec_nom	-72.201263758609
roll_nom	252.46913677687
revision	2
ontime	17156.000255644
livetime	15559.586663926
ontime7	17156.000255644
l2events	9460



## 2 OBI

### 2.1 OBI

#### 2.1.1 Images



#### 2.1.2 Bias

Chip 7



### 2.1.3 Parameters

obi_num	0
ascdsver	7.6.7.2
caldbver	3.2.2
date	2006-06-07T05:11:36
revision	2

sched_exp_time	17000.000000
ontime	17901.153181762
ontime7	17901.153181762
l1events	20994

### 2.1.4 Events

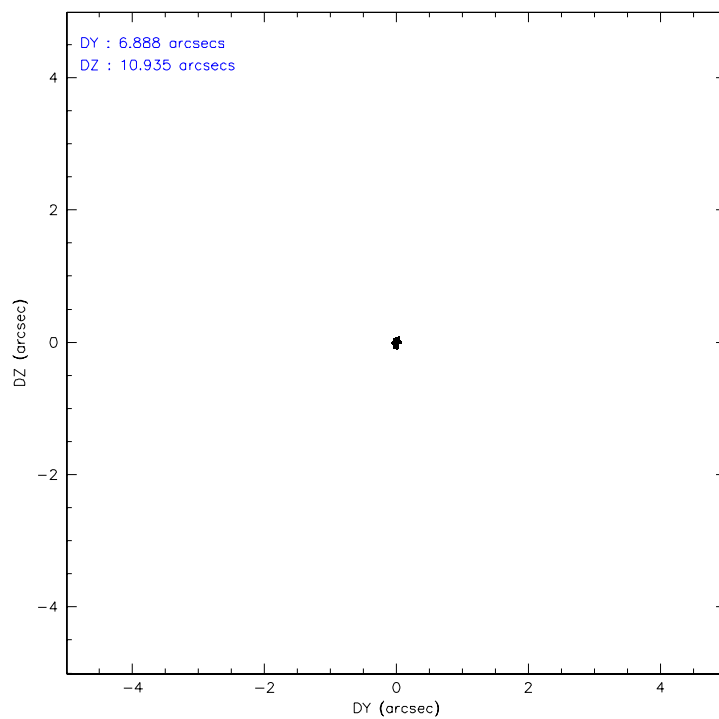
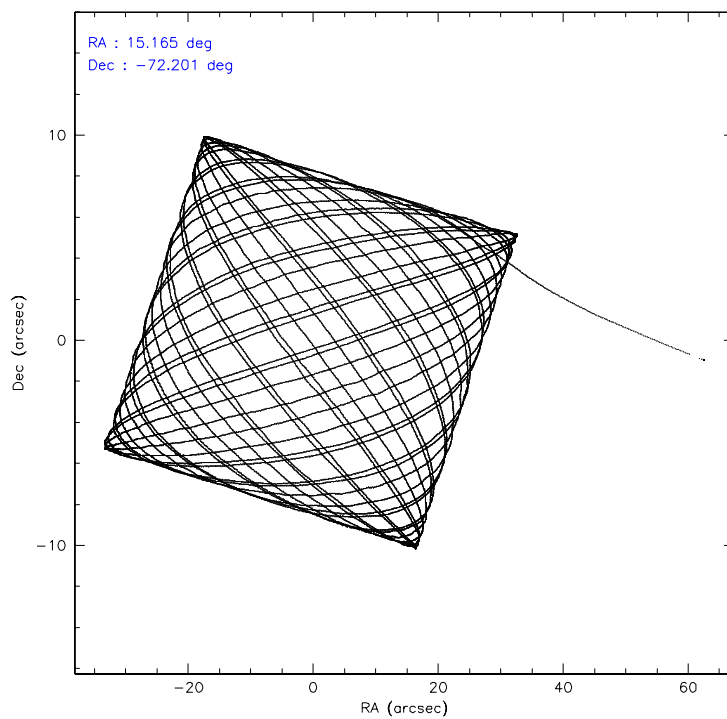
	<b>ccd 7</b>
level 1 events	20994
rejected events	11155
rejected %	53%

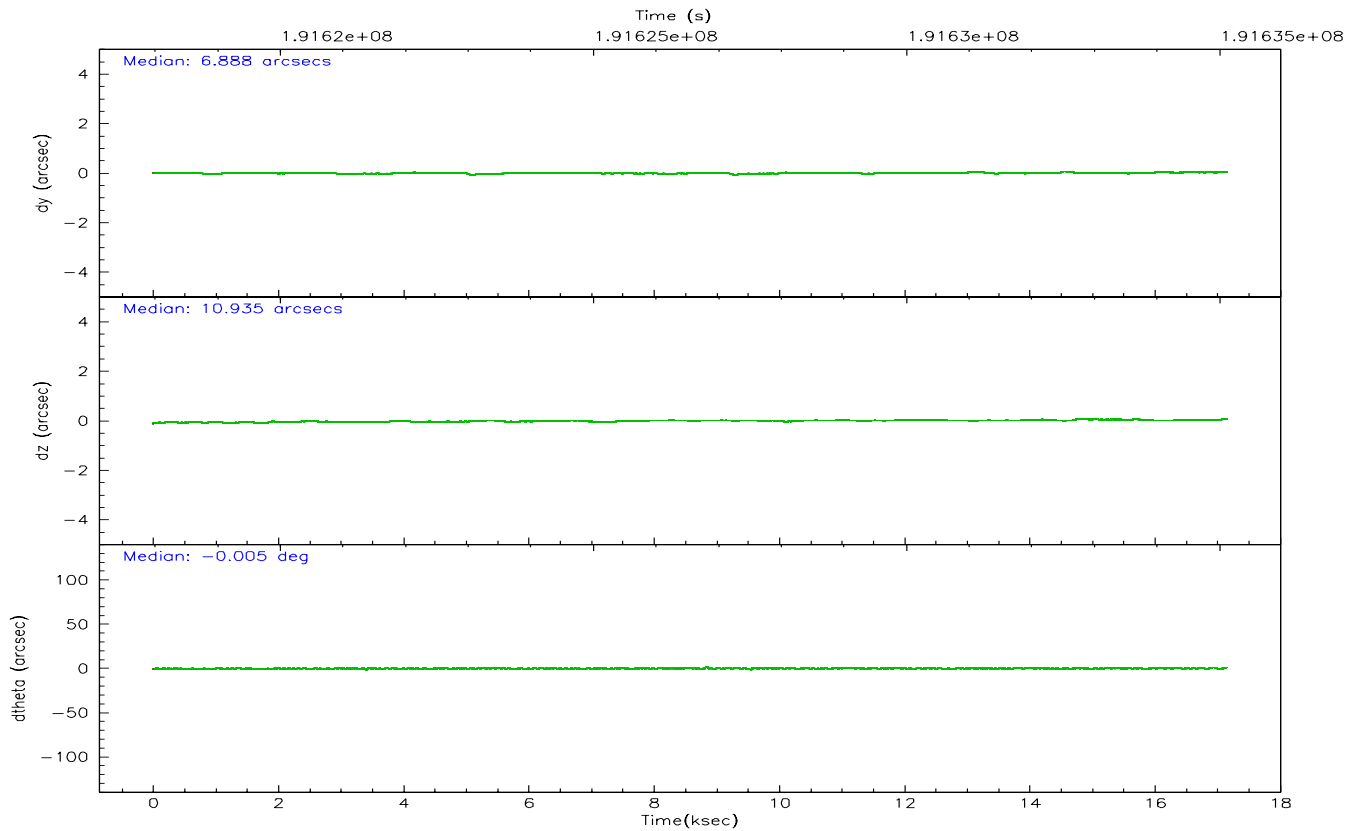
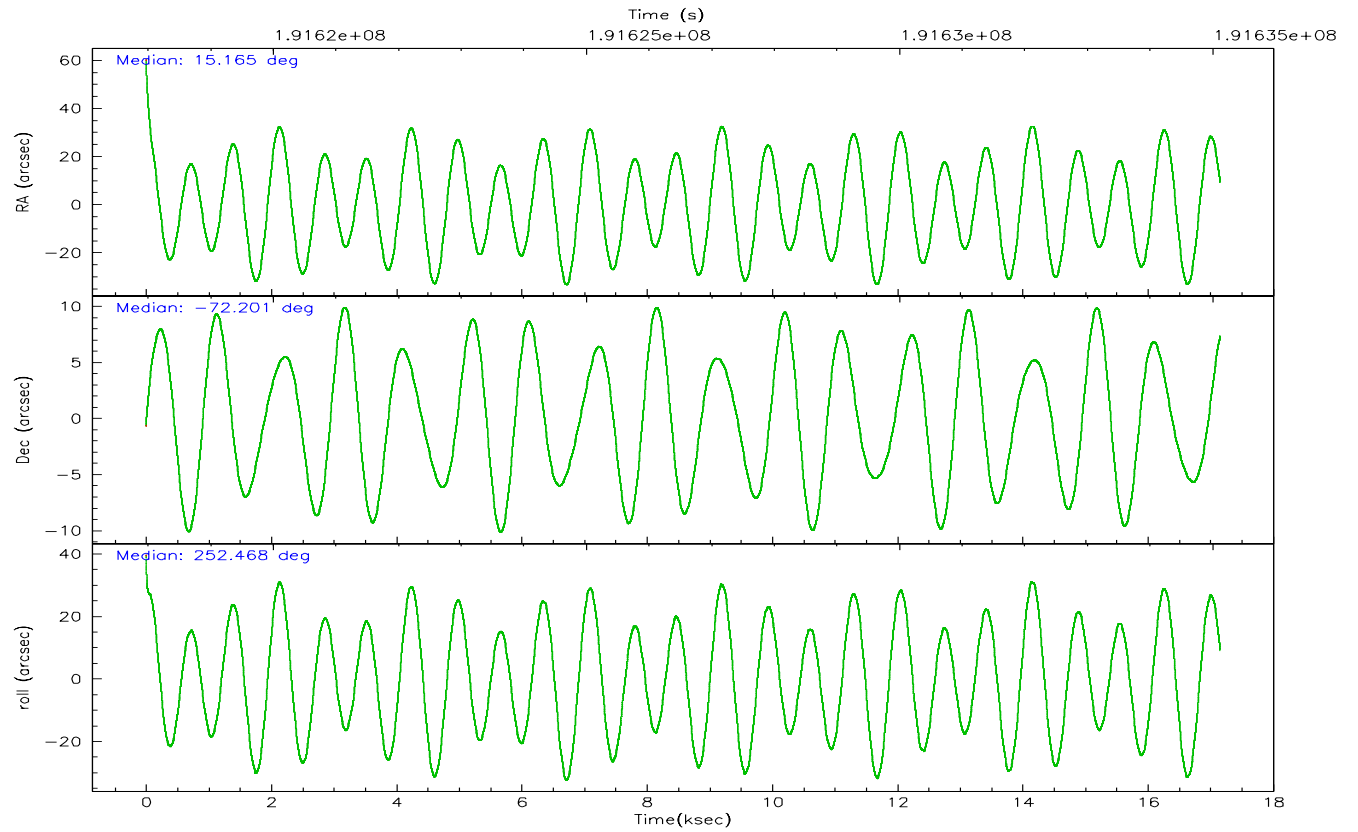
	<b>ccd 7</b>
grade 0 events	1197
	5%
grade 1 events	13
	0%
grade 2 events	2319
	11%
grade 3 events	1115
	5%
grade 4 events	1076
	5%
grade 5 events	1336
	6%
grade 6 events	4465
	21%
grade 7 events	9473
	45%

## 2.2 Compared Parameters

Parameter	Planned	Actual	Parameter	Planned	Actual
Instrument	ACIS	ACIS	Obspar format version number	6	6
Detector	ACIS-7	ACIS-7	Obspar file type	PREDICTED	ACTUAL
Grating	NONE	NONE	Obspar update status	NONE	UPDATED
Data mode	VFAINT	VFAINT	On-chip summing requested	N	N
Observation mode	POINTING	POINTING	Subarray requested	1/8	1/8
Pointing RA	15.144531	15.16502459738184	Subarray start row	0	449
Pointing Dec	-72.174792	-72.20126375860855	Subarray row count	1024	128
Pointing Roll	252.293015	252.4691367768708	Alternating exposures requested	N	N
SIM focus pos (mm)	-0.684267	-0.6828225247311905	Primary exposure time	0.000000	0.4
SIM defocus (mm)	0	0.001444936568705701			
SIM translation stage pos (mm)	-190.132523	-190.1425803651734			
SIM translation stage offset (mm)	0	0.01005778216563158			
Observation start time	191618119.184000	191617137.28632			
Observation start date	2004-01-27T19:14:15	2004-01-27T18:58:57			
Observation end time	191635119.184000	191636010.61215			
Observation end date	2004-01-27T23:57:35	2004-01-28T00:13:30			
Read mode	TIMED	TIMED			

## 2.3 Aspect





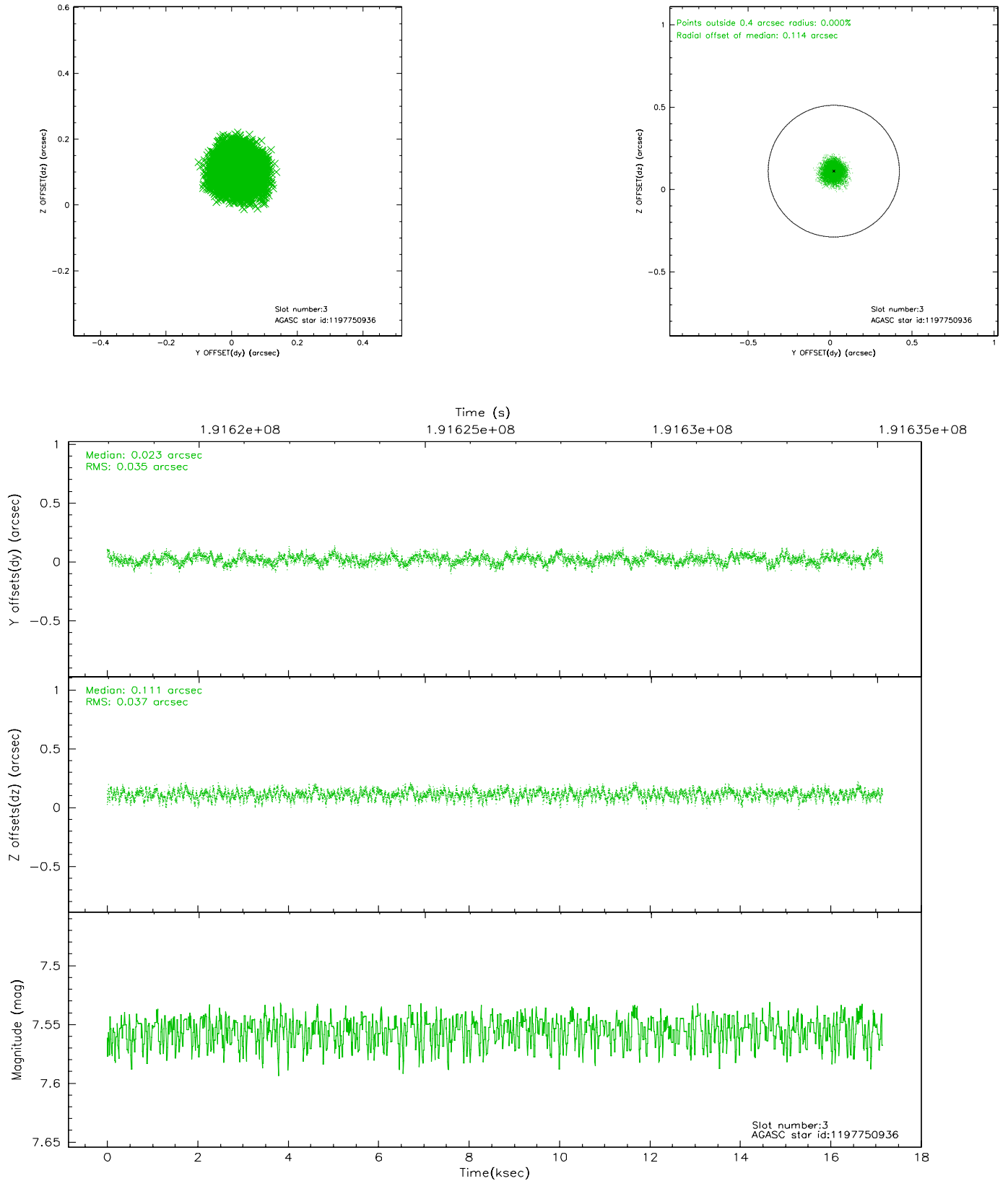
### Slot Statistics

slot	status	id	mag	n_pts	med_dy	med_dz	dr1	dr2	ra	dec	mean_y	mean_z
0	FID	ACIS-S-2	7.10	4184	-0.038	0.008	0.007	0.012	0.000000	0.000000	-759.64	-1732.16
1	FID	ACIS-S-4	7.20	4185	0.031	0.016	0.005	0.009	0.000000	0.000000	2153.56	176.14
2	FID	ACIS-S-5	7.23	4185	-0.024	-0.015	0.006	0.010	0.000000	0.000000	-1812.19	169.98
3	GUIDE	1197750936	7.55	8369	0.023	0.111	0.055	0.086	15.387940	-71.549550	-2227.70	-419.99
4	GUIDE	1197884536	8.50	8369	-0.015	-0.043	0.066	0.112	17.160729	-71.835289	-1816.53	1794.99
5	GUIDE	1197884712	8.31	8369	0.045	0.045	0.056	0.088	16.087398	-72.252690	-39.83	1073.76
6	GUIDE	1197885328	7.23	8370	0.013	-0.097	0.051	0.083	16.283090	-71.733943	-1891.18	745.22
7	GUIDE	1198189696	7.36	8368	-0.067	-0.016	0.049	0.077	15.223750	-72.697522	1766.82	653.51

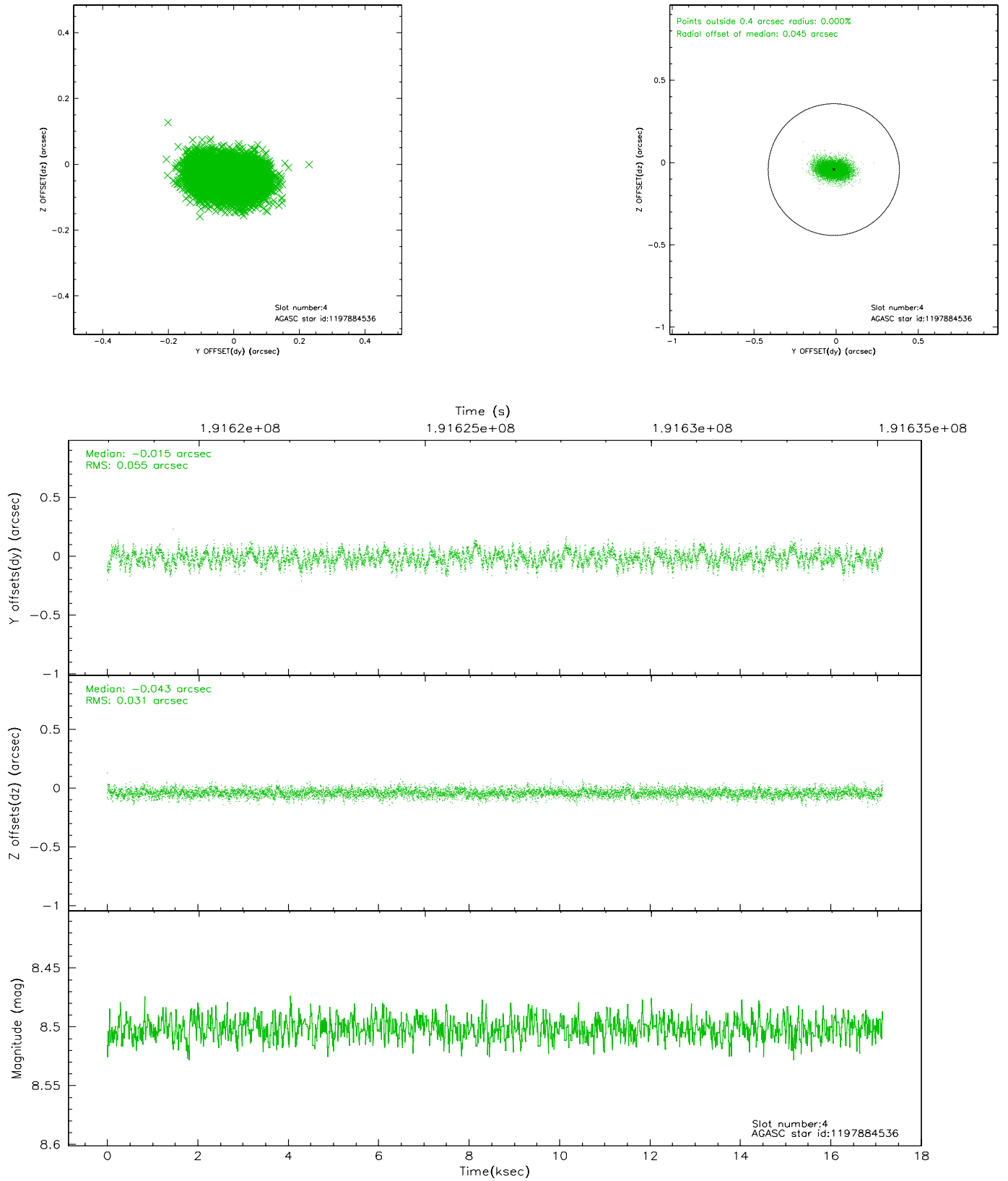


## 2.4 Star Slots

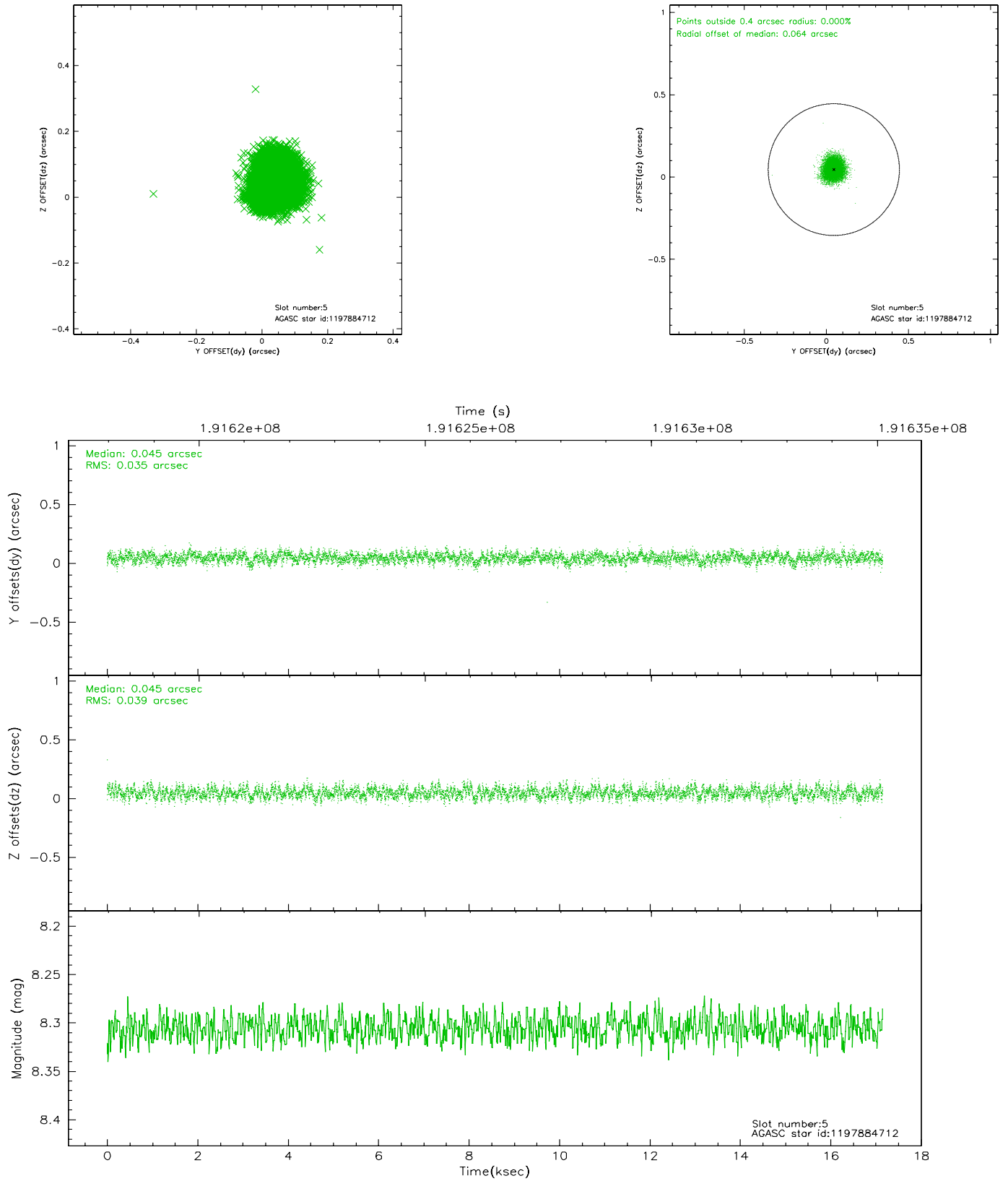
### 2.4.1 Slot 3



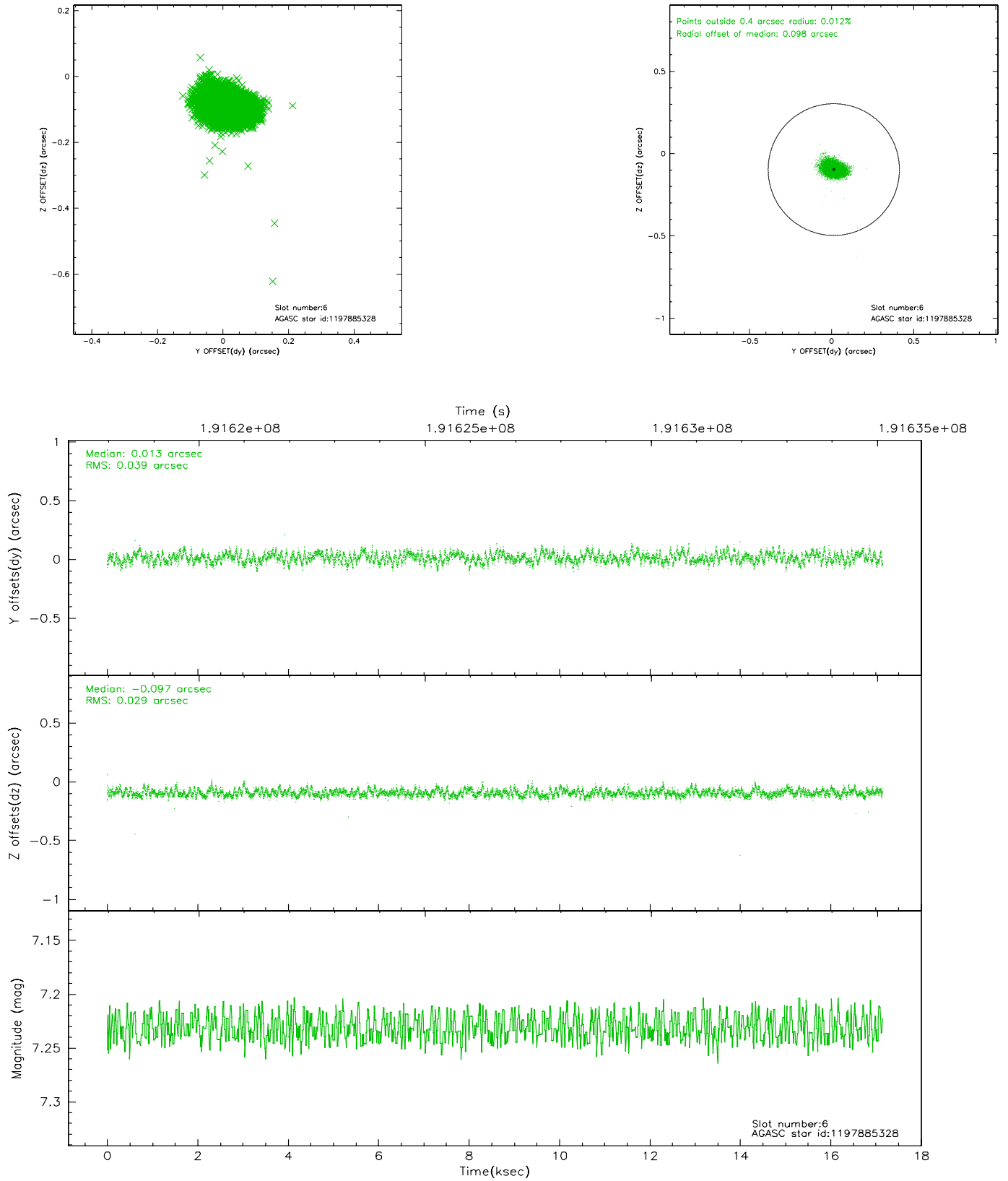
## 2.4.2 Slot 4



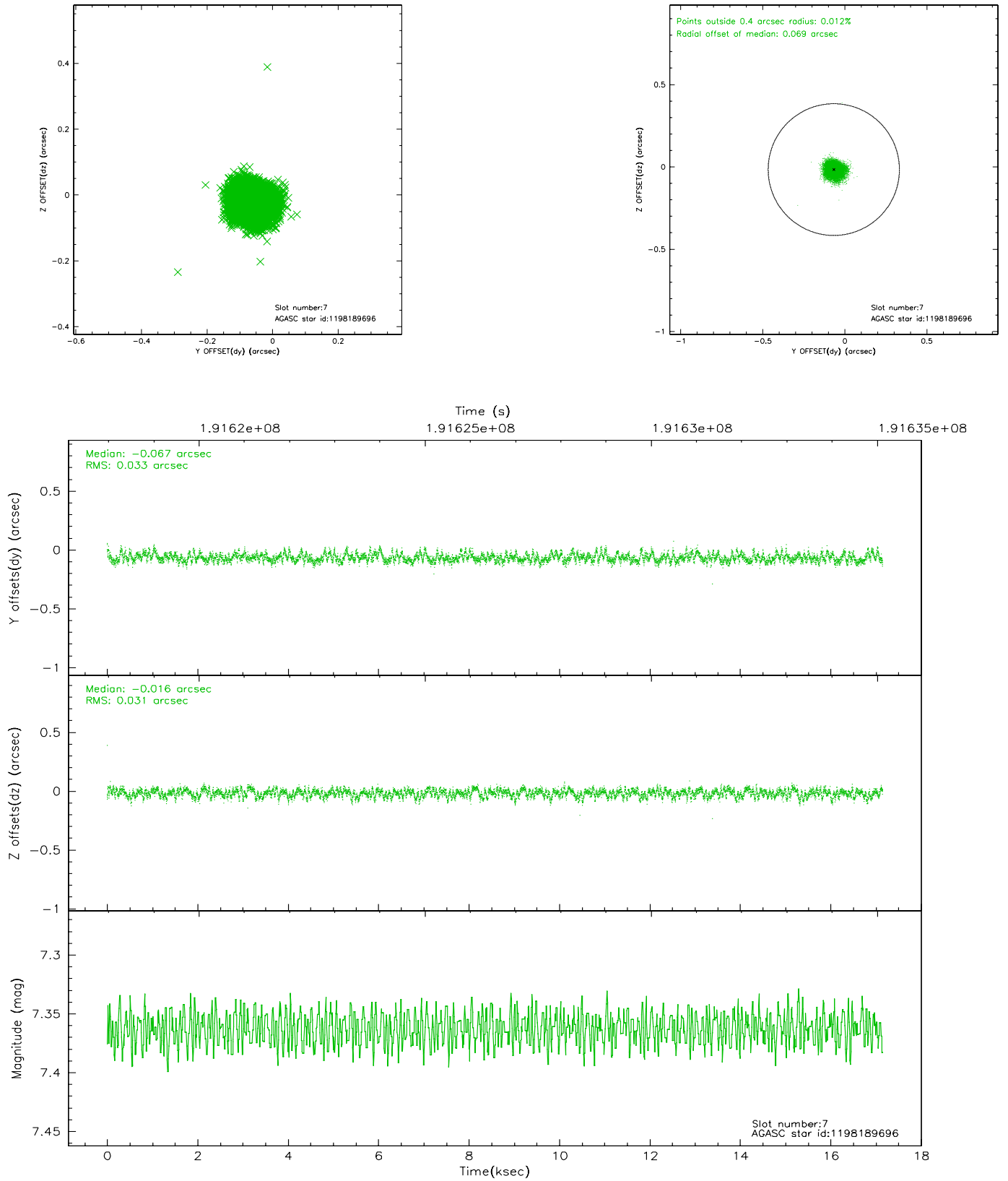
### 2.4.3 Slot 5



## 2.4.4 Slot 6

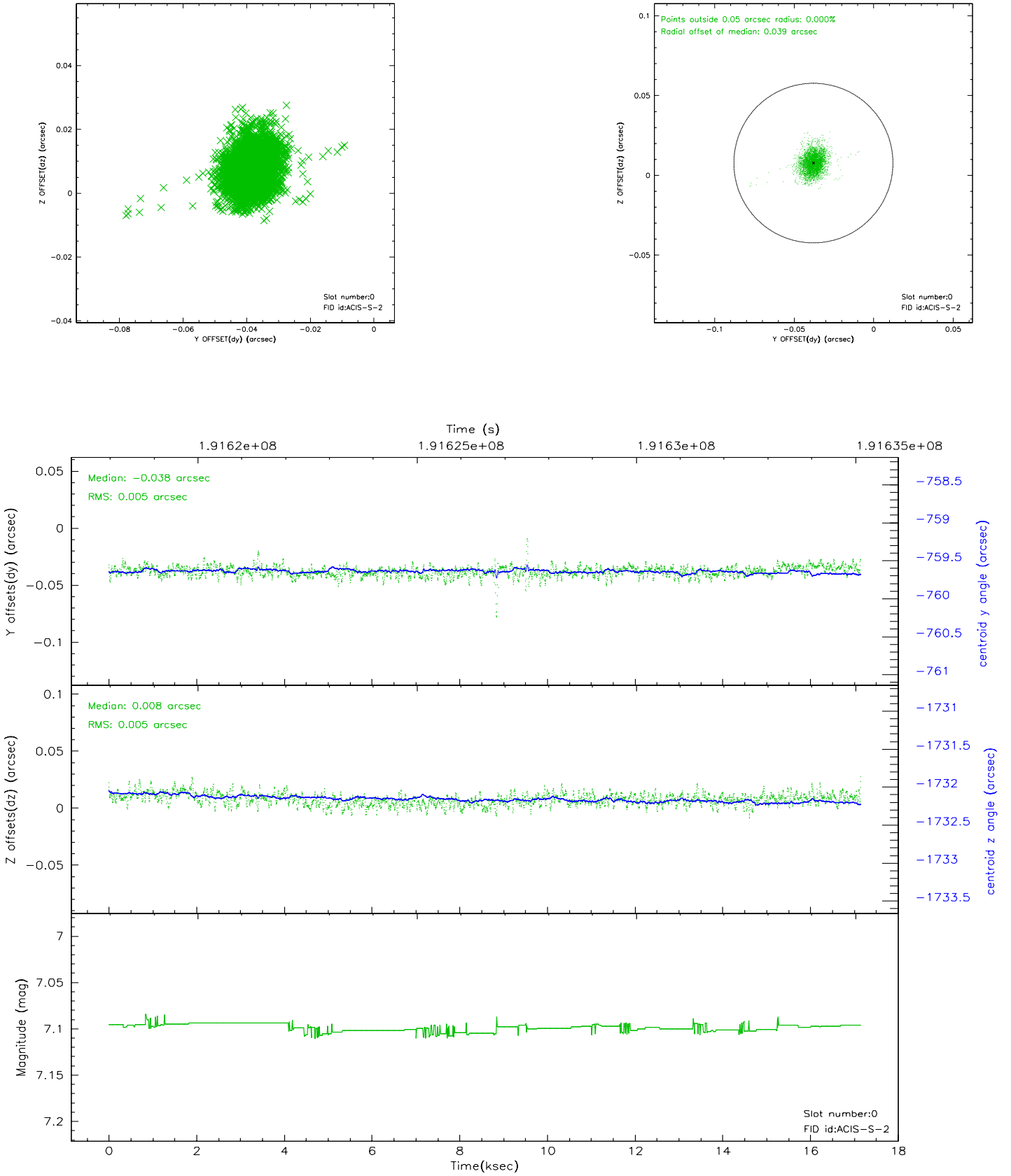


## 2.4.5 Slot 7

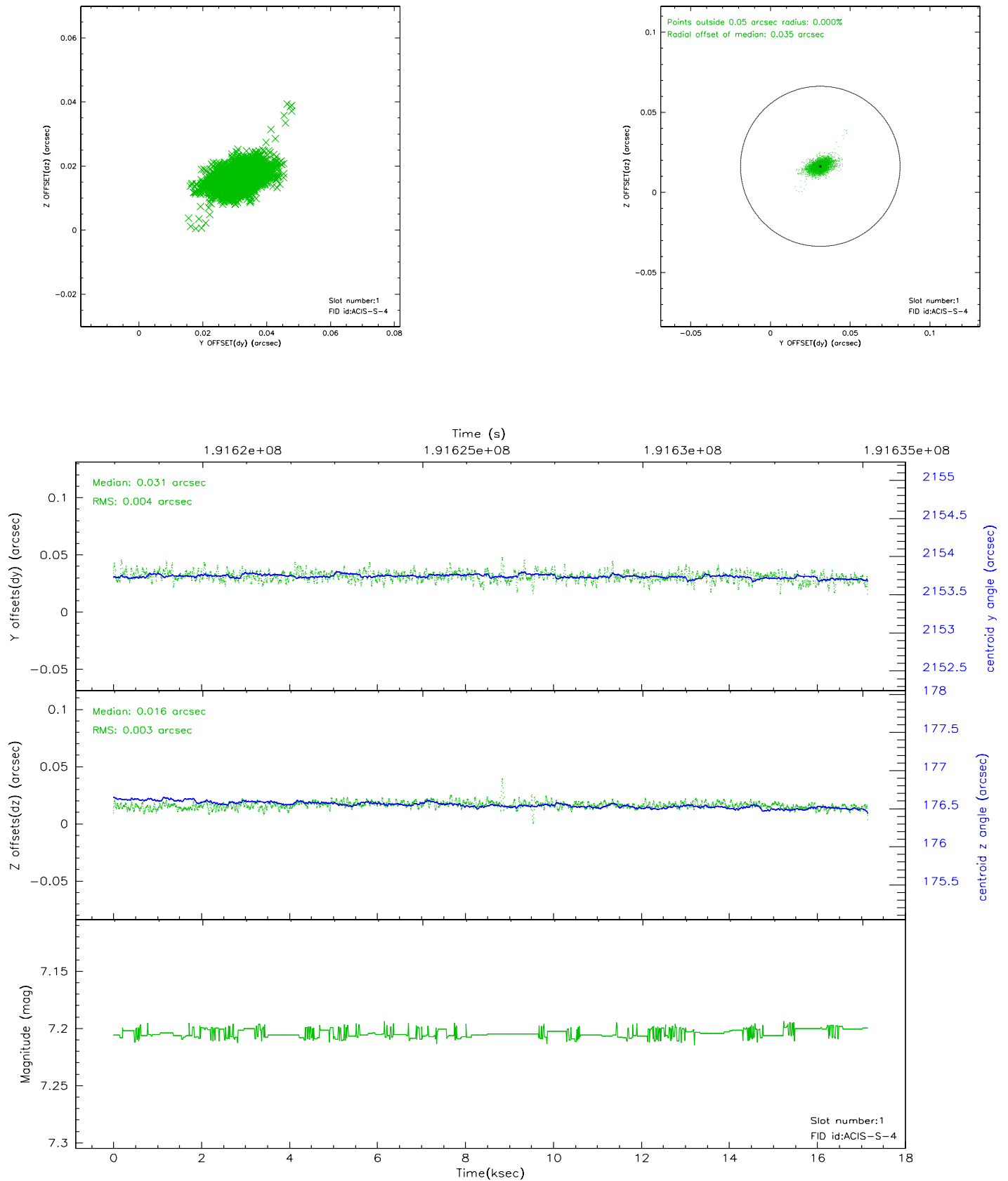


## 2.5 FID Slots

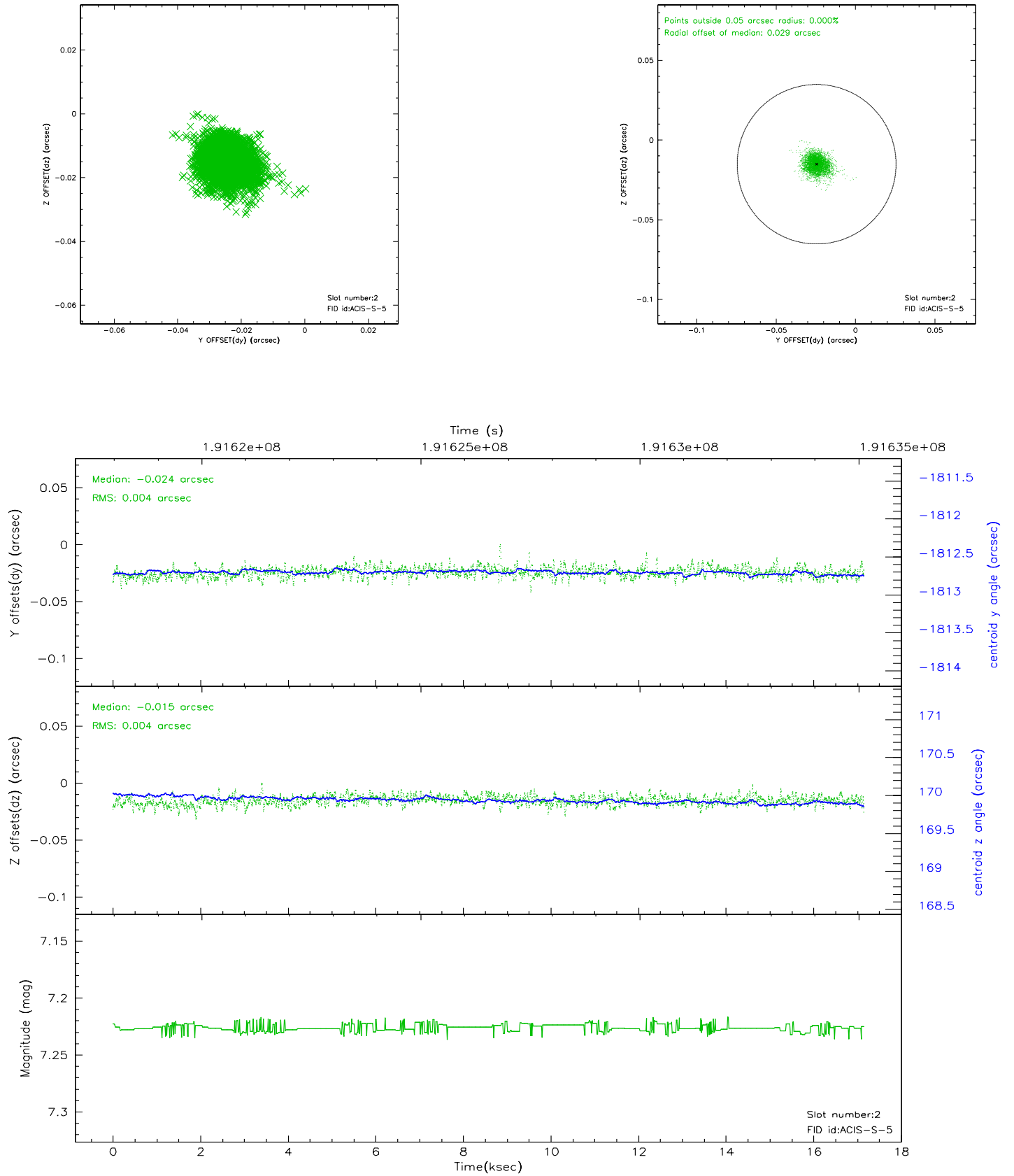
### 2.5.1 Slot 0



## 2.5.2 Slot 1



### 2.5.3 Slot 2





### 3 Point Sources

5.40 arcmin



## A Summary

### A.1 Status

V&V Scientist	Beth Sundheim
V&V Date (YYYY-MM-DD)	2006.06.07
V&V Edition	1
V&V Disposition and Status	OK
V&V Charge Time	17.156

### A.2 Comments