

V&V Reference Report

L2 ASCDS Version : 7.6.7.2

Observation 5291 - L2 Version 001
Chandra X-Ray Center

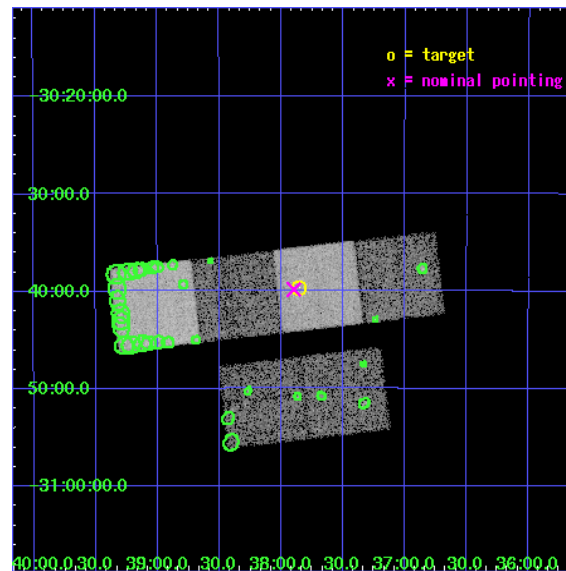
L2 Processing Date : Jun 6 2006

Contents

1	Front	2
2	OBI	3
2.1	OBI	3
2.1.1	Images	3
2.1.2	Bias	3
2.1.3	Parameters	4
2.1.4	Events	4
2.2	Compared Parameters	5
2.3	Aspect	6
2.4	Star Slots	9
2.4.1	Slot 3	9
2.4.2	Slot 4	10
2.4.3	Slot 5	11
2.4.4	Slot 6	12
2.4.5	Slot 7	13
2.5	FID Slots	14
2.5.1	Slot 0	14
2.5.2	Slot 1	15
2.5.3	Slot 2	16
3	Point Sources	17
A	Summary	18
A.1	Status	18
A.2	Comments	18

1 Front

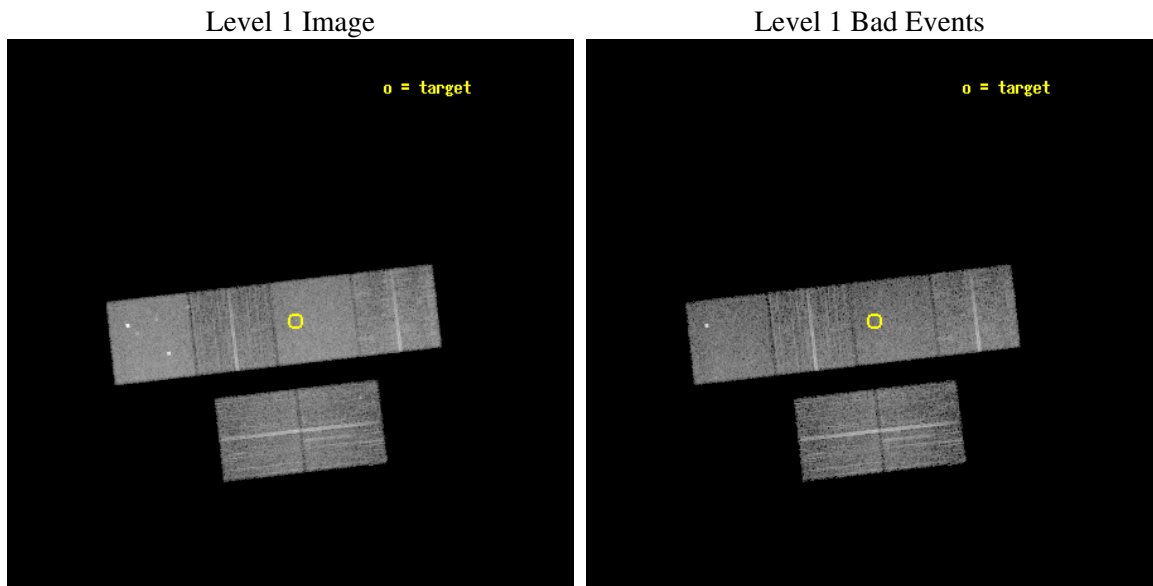
seq_num	400376
obs_id	5291
title	A Search for X-Ray Emission from the Double-Pulsar Binary System J0737-3039
observer	Dr Maura McLaughlin
object	PSR J0737-3039
dtcycle	0
cycle	P
ra_targ	114.46375
dec_targ	-30.661306
ra_nom	114.47447884052
dec_nom	-30.664056760902
roll_nom	353.41177238044
revision	2
ontime	10137.599962234
livetime	10009.231567383
ontime2	10137.599962234
ontime3	10137.599962234
ontime5	10137.599962234
ontime6	10137.599962234
ontime7	10137.599962234
ontime8	10137.599962234
l2events	104214



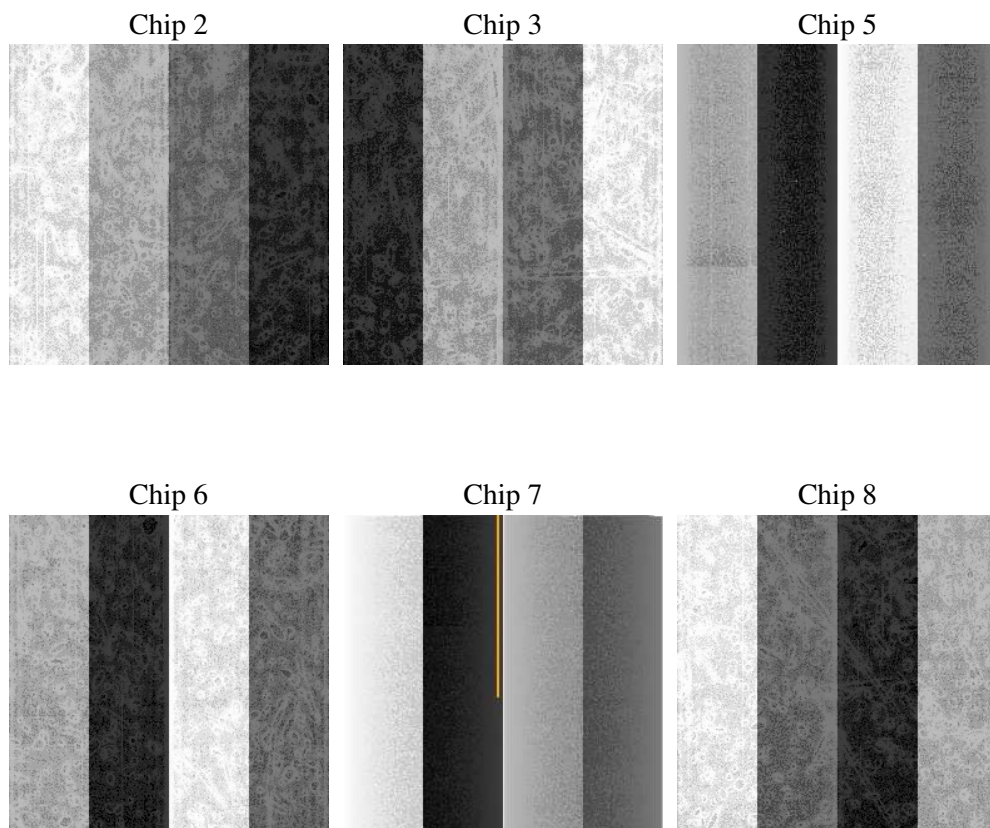
2 OBI

2.1 OBI

2.1.1 Images



2.1.2 Bias



2.1.3 Parameters

obi_num	1
ascdsver	7.6.7.2
caldbver	3.2.2
date	2006-06-06T21:56:19
revision	2

sched_exp_time	10000.000000
ontime	10847.642943174
ontime2	10847.642923236
ontime3	10847.642923236
ontime5	10847.642943174
ontime6	10847.642923236
ontime7	10847.642943174
ontime8	10847.642923236
l1events	500600

2.1.4 Events

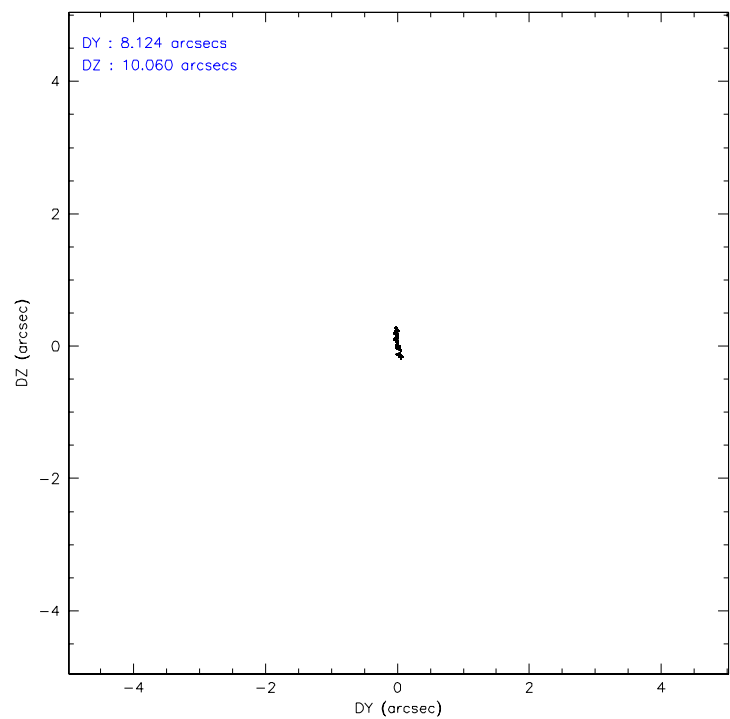
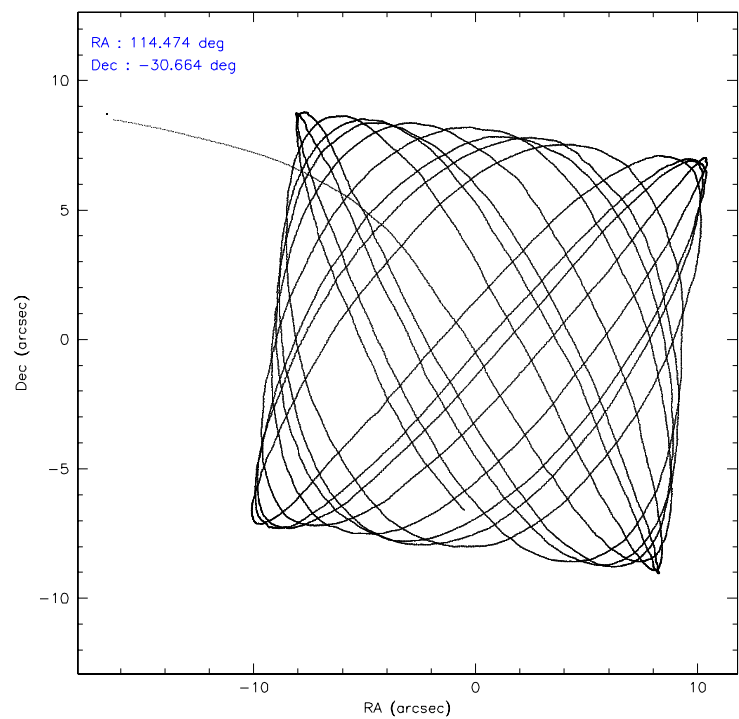
	ccd 2	ccd 3	ccd 5	ccd 6	ccd 7	ccd 8
level 1 events	70215	68045	107727	71541	95375	87697
rejected events	61765	59823	62790	63016	61517	69290
rejected %	87%	87%	58%	88%	64%	79%

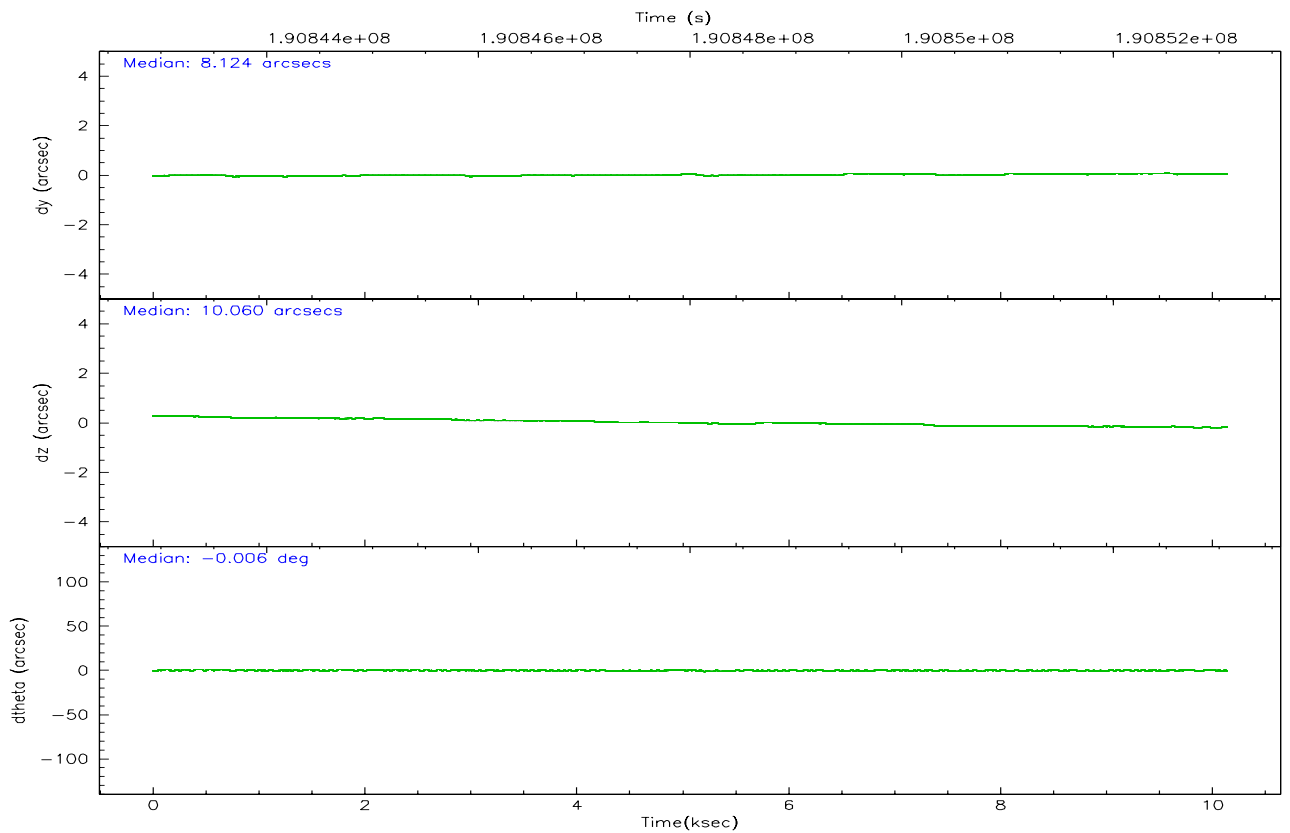
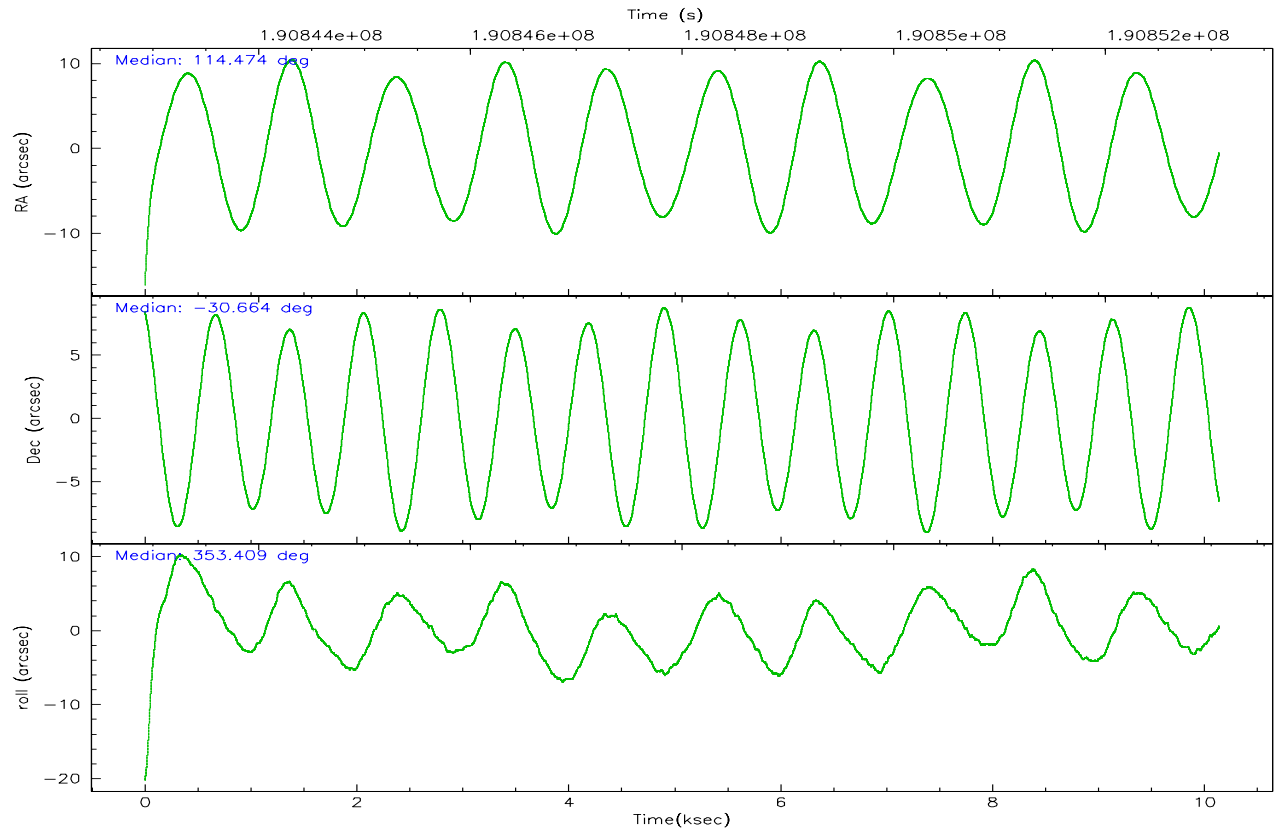
	ccd 2	ccd 3	ccd 5	ccd 6	ccd 7	ccd 8
grade 0 events	4234	4001	4526	3802	2035	6522
	6%	5%	4%	5%	2%	7%
grade 1 events	40	46	93	34	52	38
	0%	0%	0%	0%	0%	0%
grade 2 events	1727	1591	15185	1872	9064	4191
	2%	2%	14%	2%	9%	4%
grade 3 events	765	770	1006	871	1812	2029
	1%	1%	0%	1%	1%	2%
grade 4 events	816	909	951	800	1770	1948
	1%	1%	0%	1%	1%	2%
grade 5 events	2785	3013	4962	3305	6216	4161
	3%	4%	4%	4%	6%	4%
grade 6 events	1426	1498	26468	1745	21575	4928
	2%	2%	24%	2%	22%	5%
grade 7 events	58422	56217	54536	59112	52851	63880
	83%	82%	50%	82%	55%	72%

2.2 Compared Parameters

Parameter	Planned	Actual	Parameter	Planned	Actual
Instrument	ACIS	ACIS	Obspar format version number	6	6
Detector	ACIS-235678	ACIS-235678	Obspar file type	PREDICTED	ACTUAL
Grating	NONE	NONE	Obspar update status	NONE	UPDATED
Data mode	FAINT	FAINT	On-chip summing requested	N	N
Observation mode	POINTING	POINTING	Subarray requested	NONE	NONE
Pointing RA	114.445643	114.4744788405212	Alternating exposures requested	N	N
Pointing Dec	-30.675236	-30.66405676090205	Primary exposure time	0.000000	3.2
Pointing Roll	353.240448	353.411772380438			
SIM focus pos (mm)	-0.684267	-0.6828225247311905			
SIM defocus (mm)	0	0.001444936568705701			
SIM translation stage pos (mm)	-190.132523	-190.1425803651734			
SIM translation stage offset (mm)	0	0.01005778216563158			
Observation start time	190843069.184000	190841668.37748			
Observation start date	2004-01-18T19:56:45	2004-01-18T19:34:28			
Observation end time	190853069.184000	190853748.51551			
Observation end date	2004-01-18T22:43:25	2004-01-18T22:55:48			
Read mode	TIMED	TIMED			

2.3 Aspect



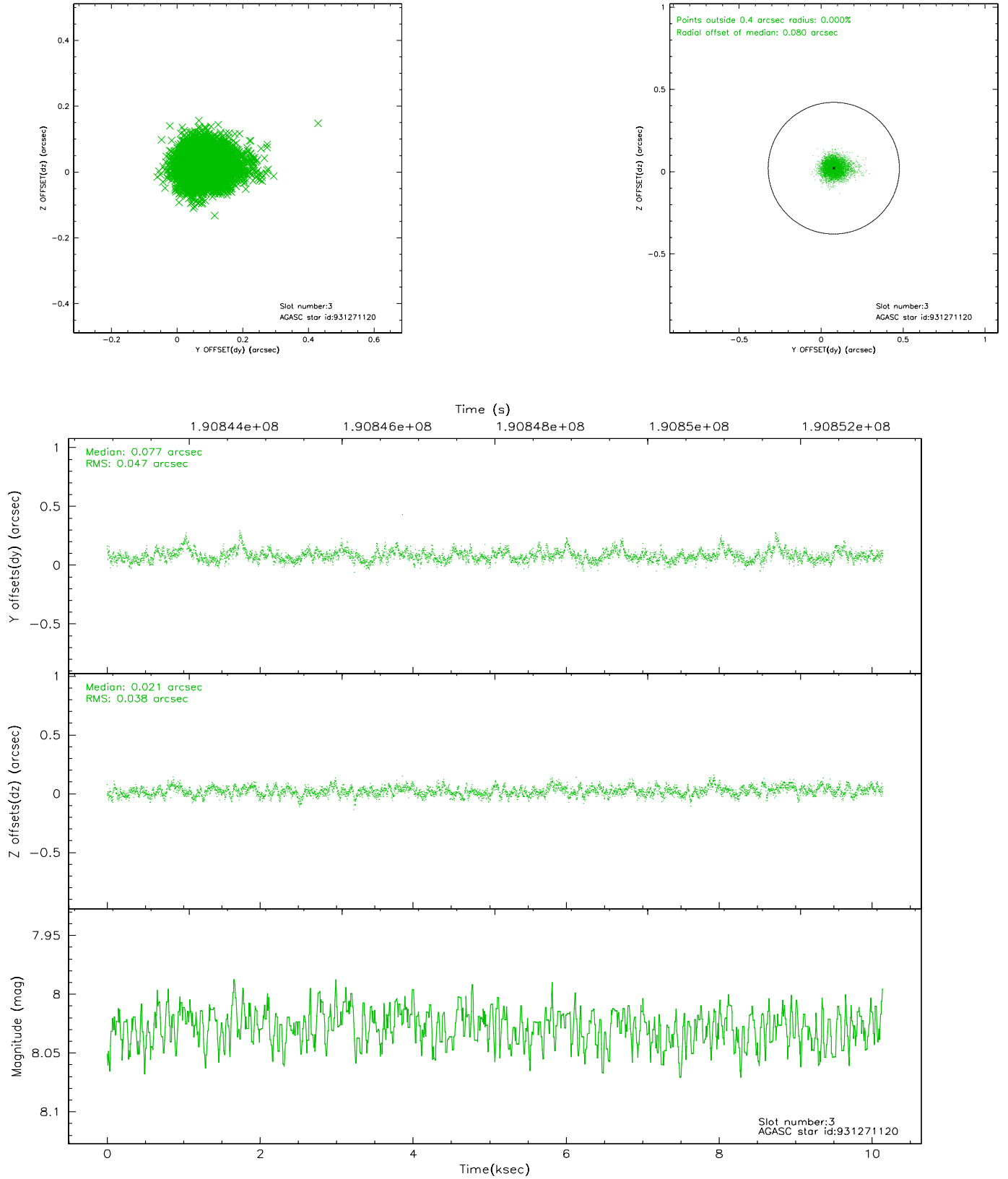


Slot Statistics

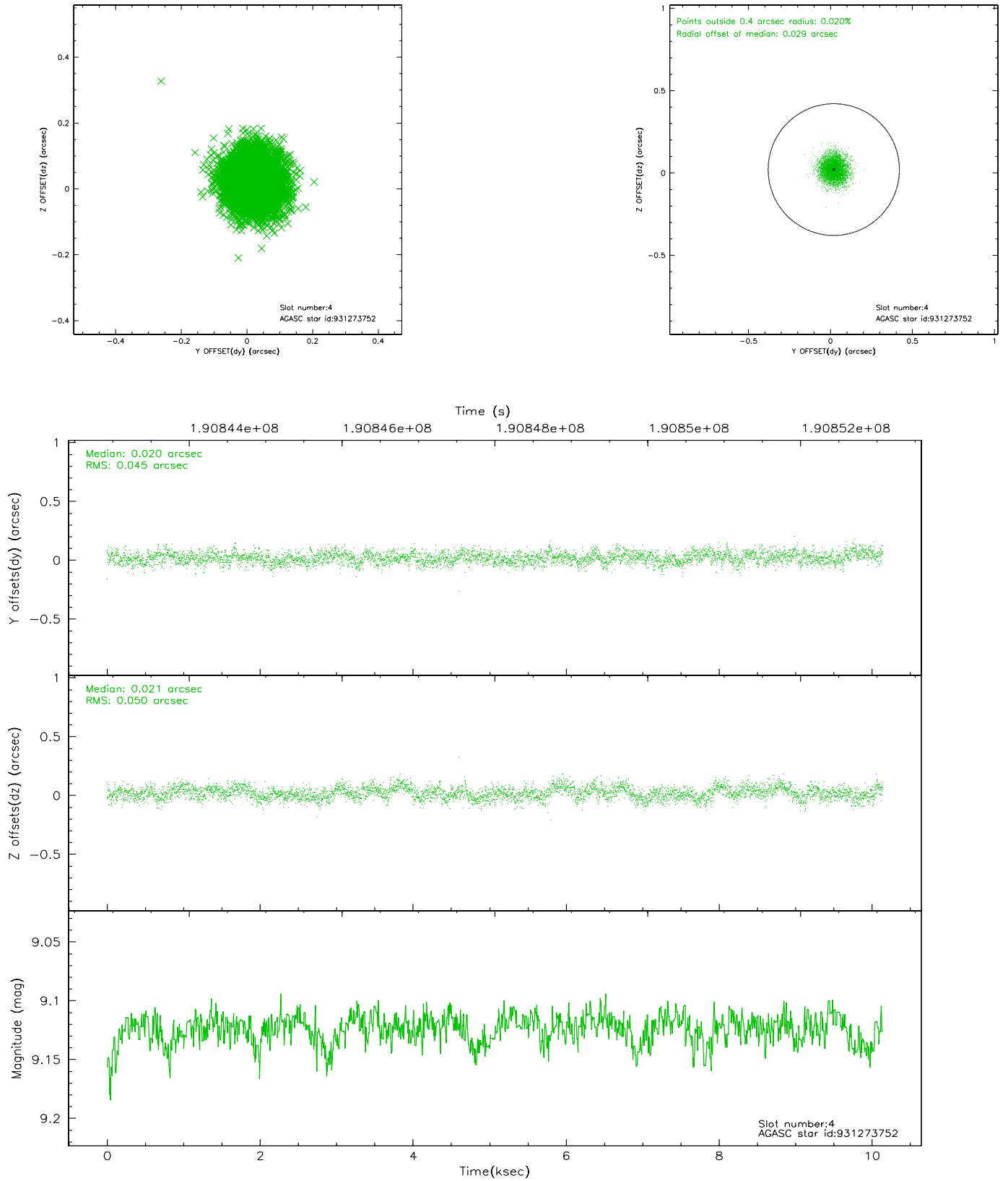
slot	status	id	mag	n_pts	med_dy	med_dz	dr1	dr2	ra	dec	mean_y	mean_z
0	FID	ACIS-S-1	7.18	2474	0.024	-0.014	0.014	0.026	0.000000	0.000000	935.16	-1726.91
1	FID	ACIS-S-5	7.23	2475	-0.054	0.022	0.007	0.013	0.000000	0.000000	-1813.63	170.13
2	FID	ACIS-S-6	7.34	2474	0.009	0.003	0.014	0.024	0.000000	0.000000	400.12	814.67
3	GUIDE	931271120	8.03	4948	0.077	0.021	0.063	0.105	114.333464	-30.792205	-294.62	-459.19
4	GUIDE	931273752	9.12	4946	0.020	0.021	0.073	0.116	114.272866	-30.278196	-701.52	1355.64
5	GUIDE	931276288	9.26	4947	0.087	0.109	0.091	0.146	114.013223	-30.688150	-1323.47	-206.00
6	GUIDE	931417848	6.92	4949	-0.190	-0.128	0.048	0.078	115.018285	-30.169061	1555.65	2014.76
7	GUIDE	931413320	7.41	4878	-0.000	-0.021	0.059	0.097	115.109397	-30.079715	1802.11	2366.85

2.4 Star Slots

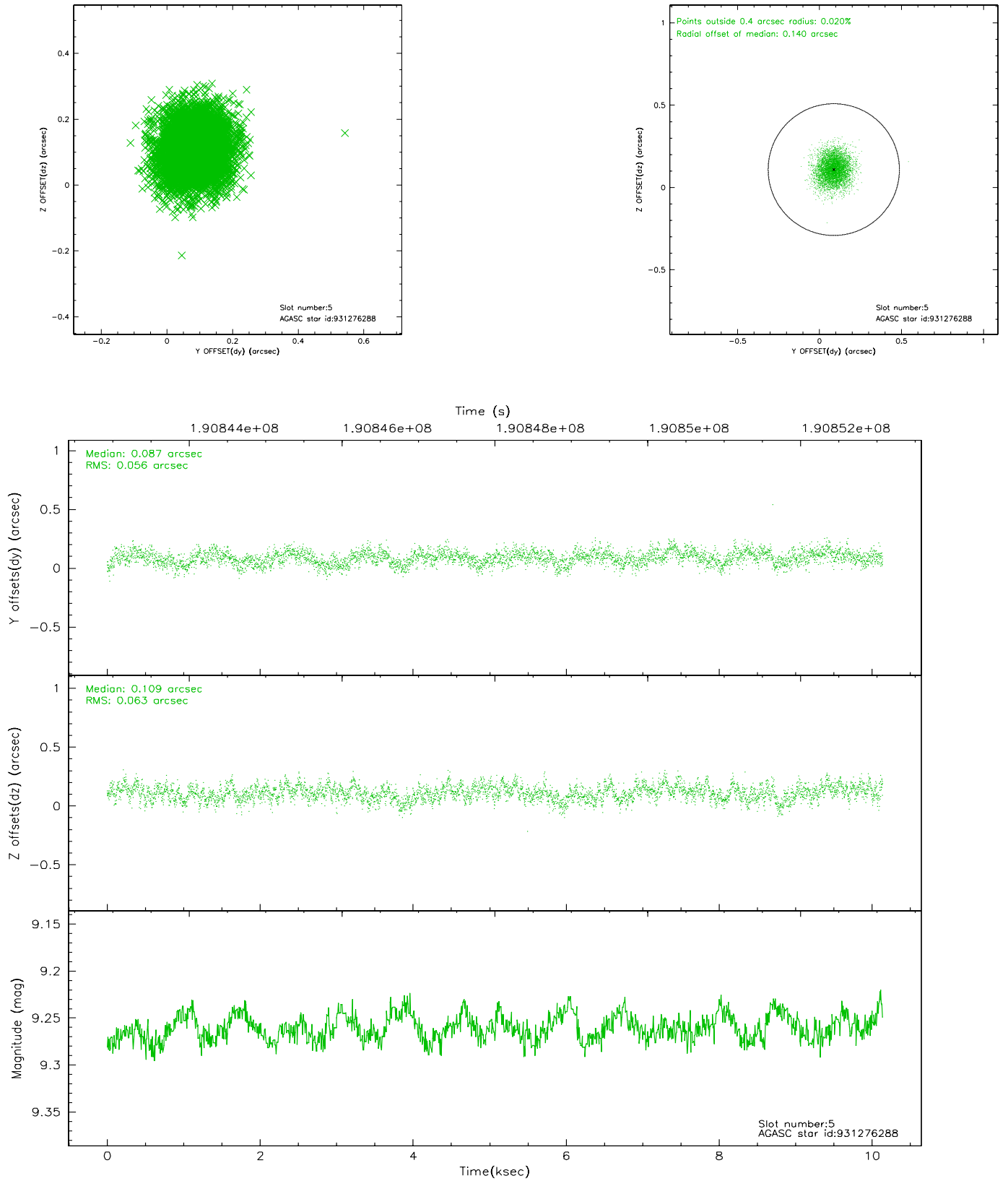
2.4.1 Slot 3



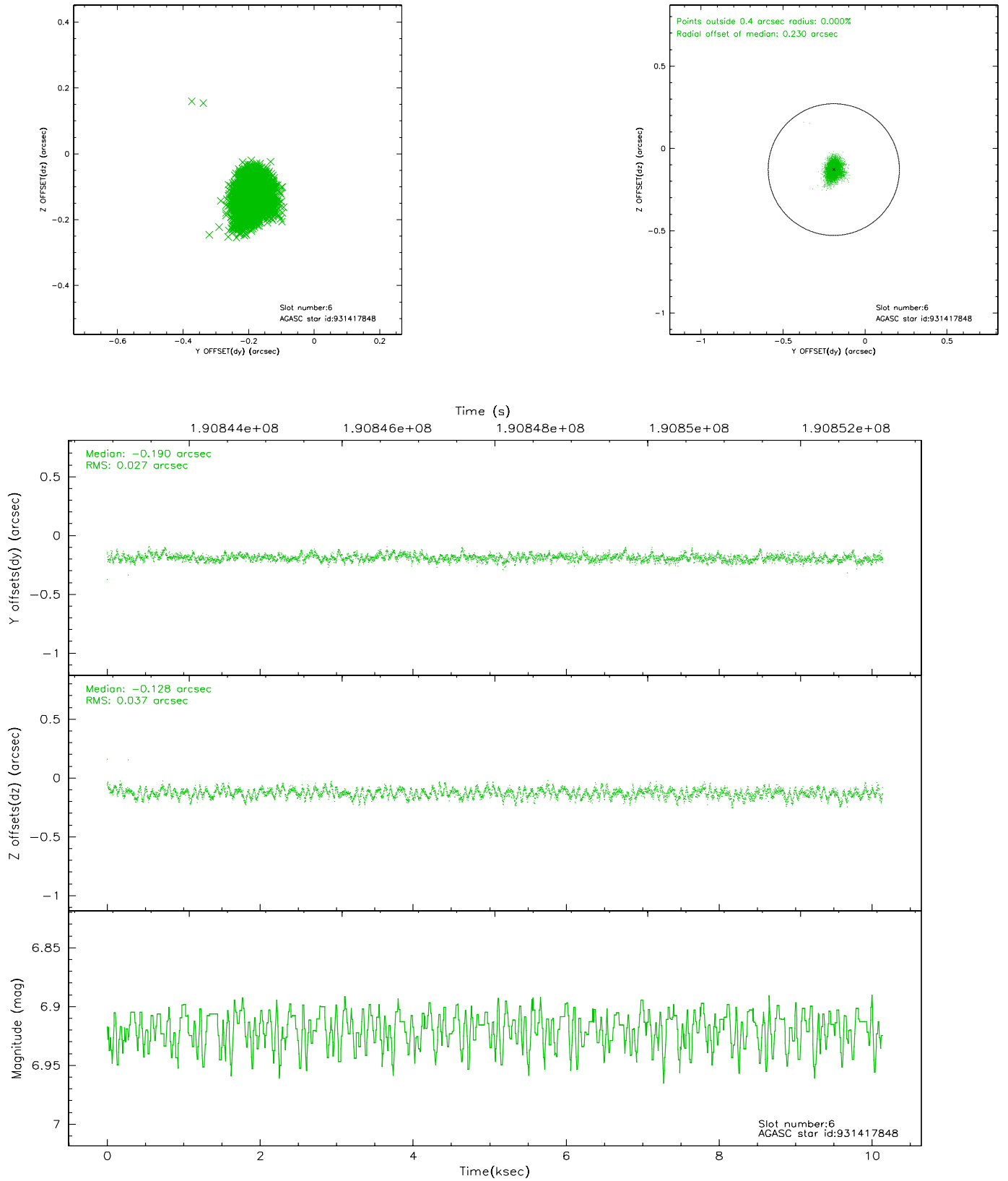
2.4.2 Slot 4



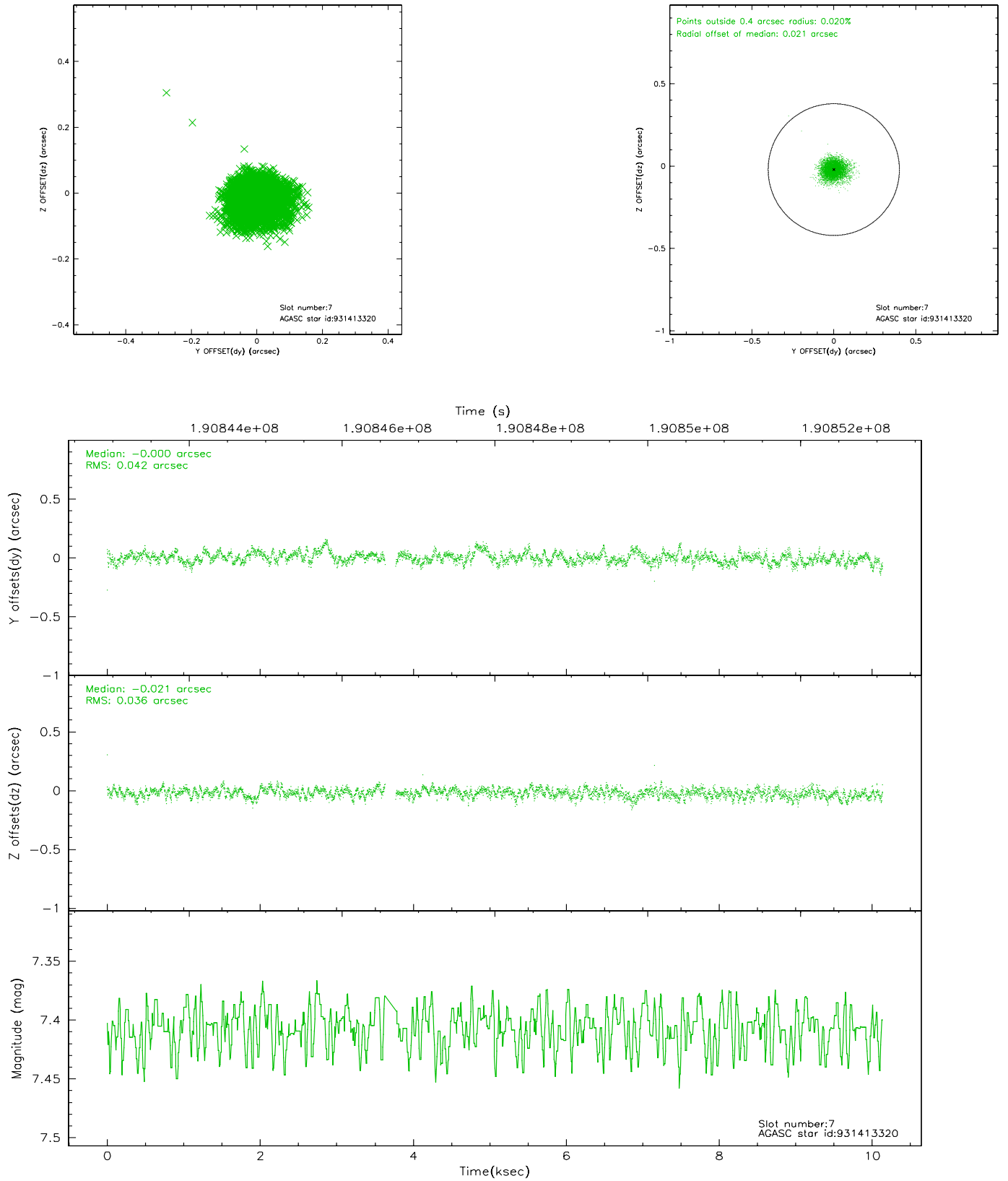
2.4.3 Slot 5



2.4.4 Slot 6

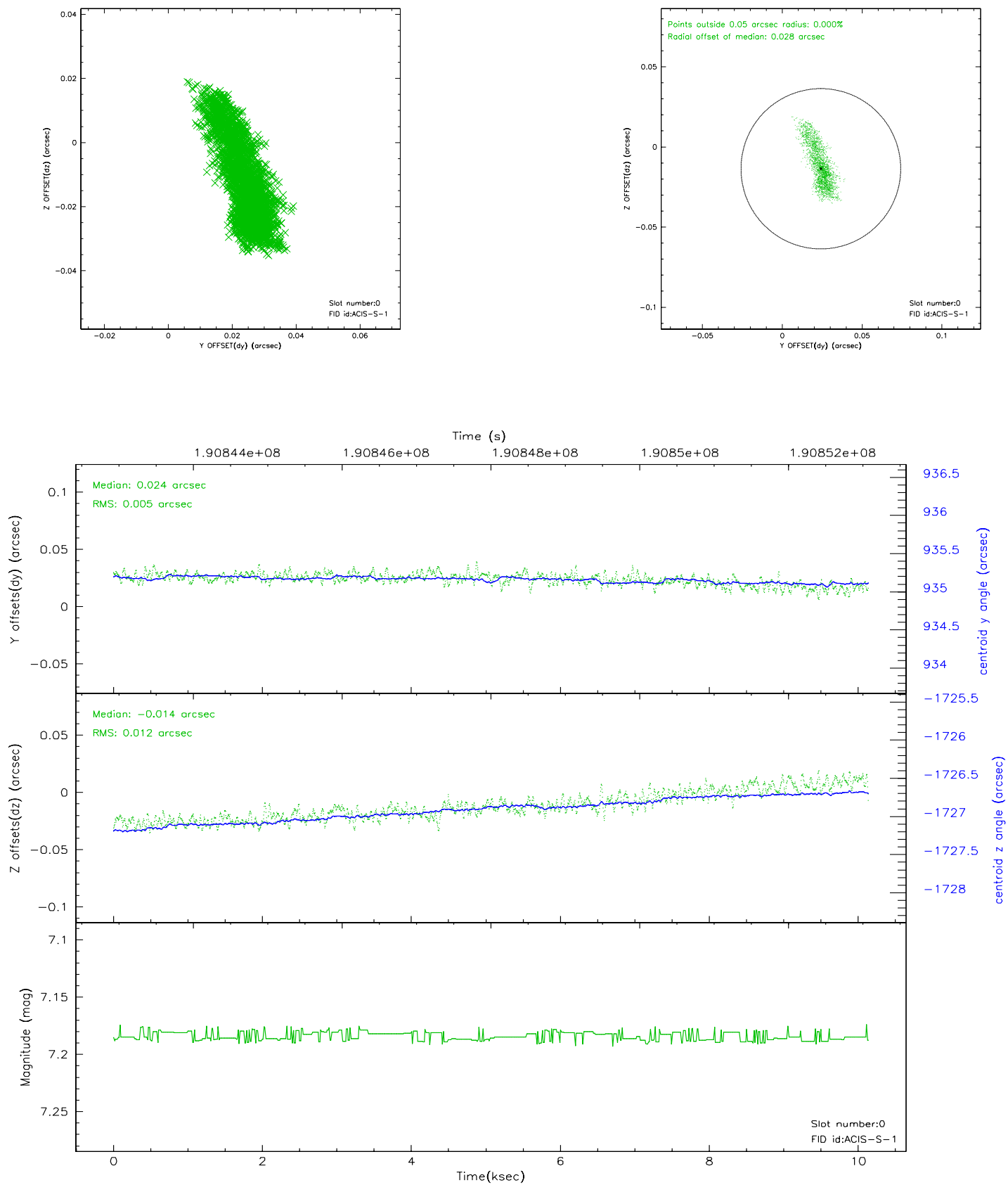


2.4.5 Slot 7

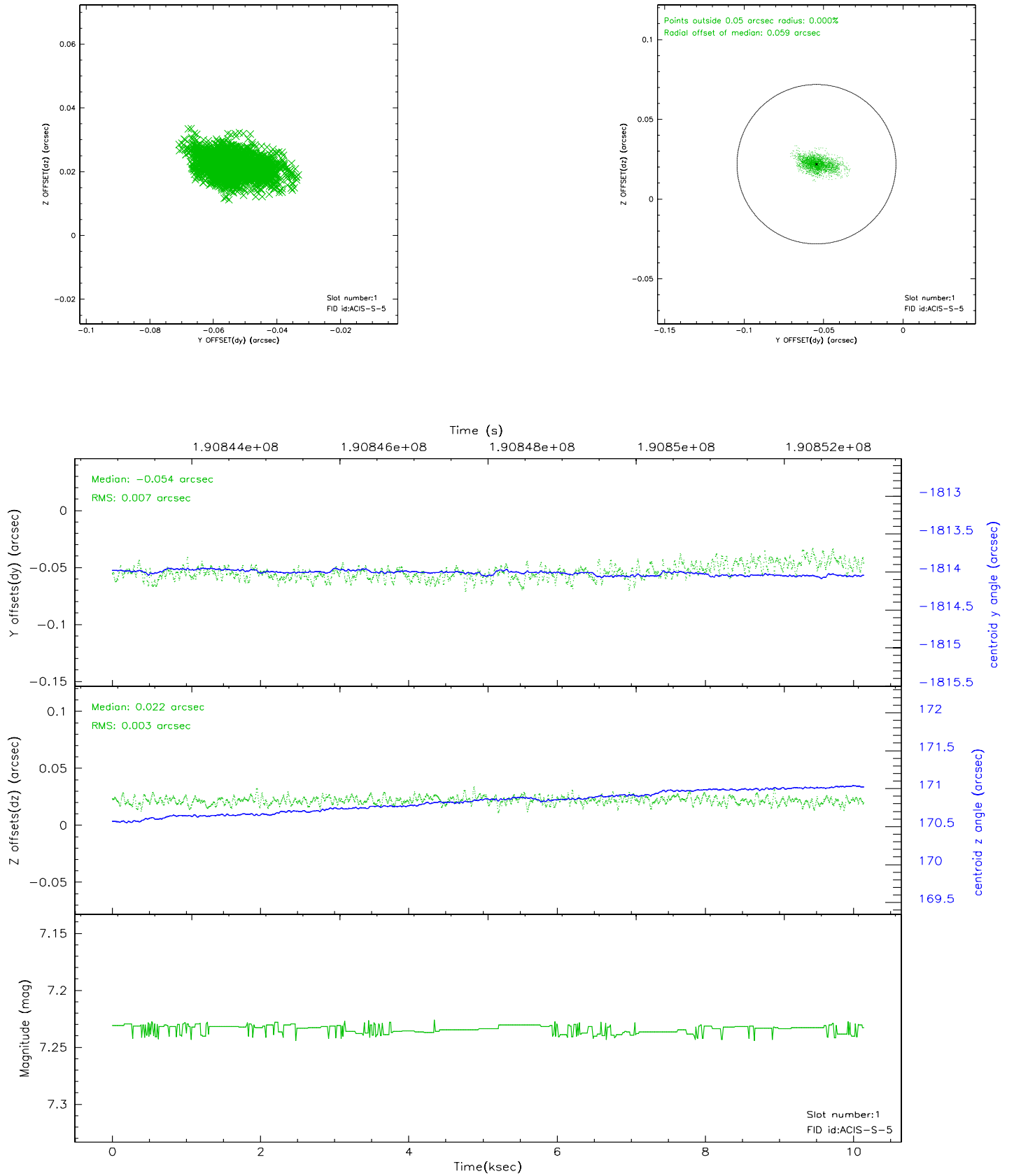


2.5 FID Slots

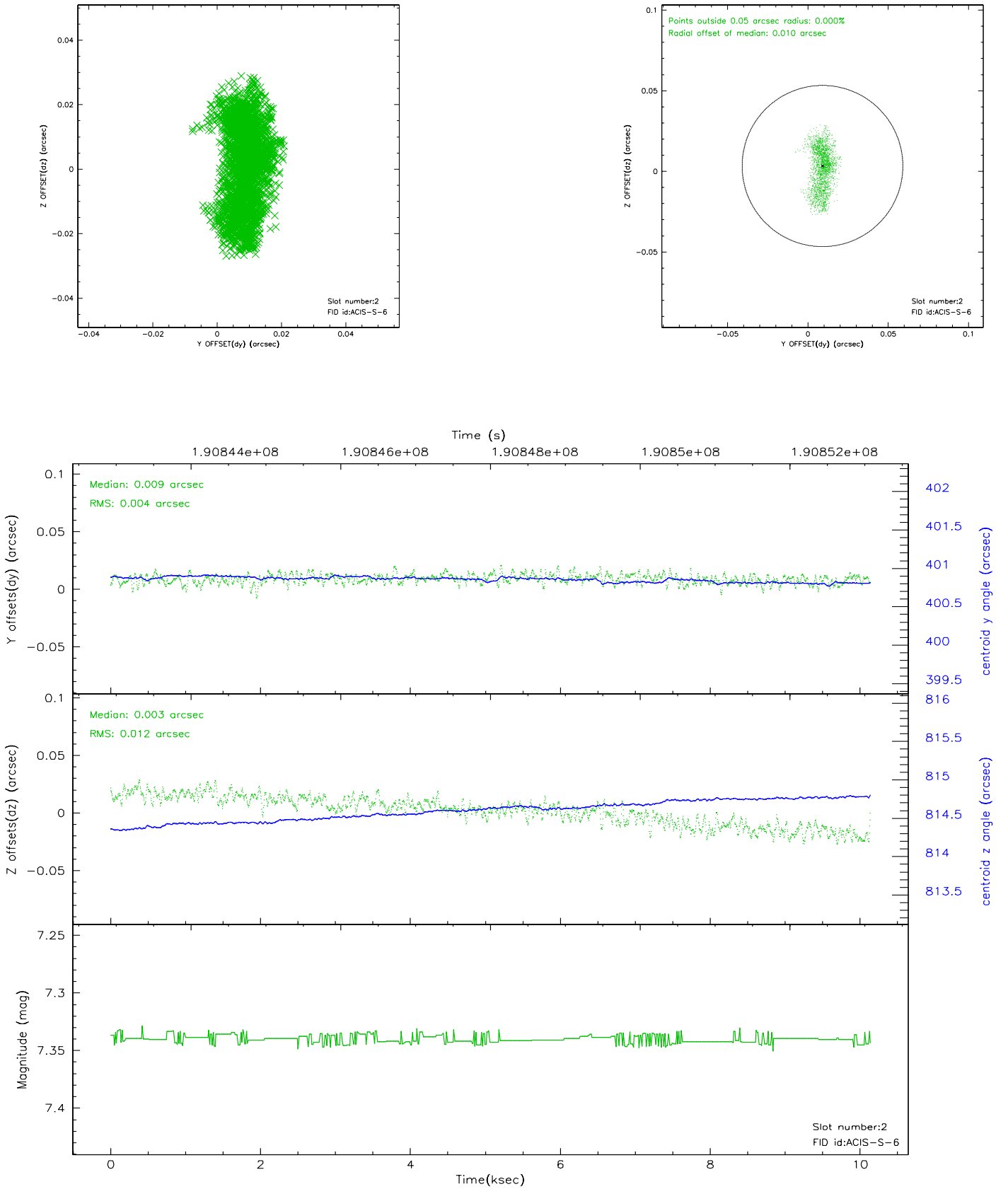
2.5.1 Slot 0



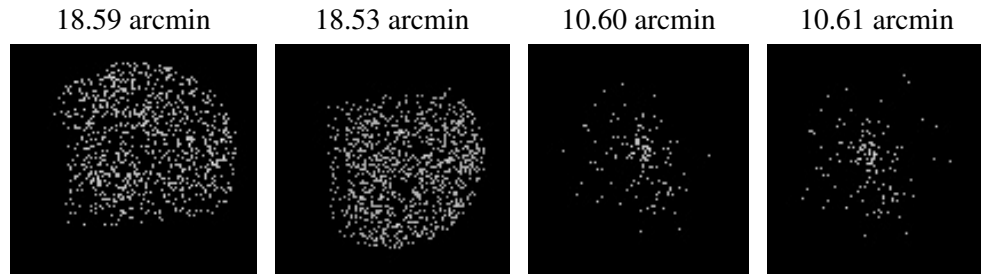
2.5.2 Slot 1



2.5.3 Slot 2



3 Point Sources



A Summary

A.1 Status

V&V Scientist	Beth Sundheim
V&V Date (YYYY-MM-DD)	2006.06.07
V&V Edition	1
V&V Disposition and Status	OK
V&V Charge Time	10.137

A.2 Comments