

V&V Reference Report

L2 ASCDS Version : 7.6.7.2

Observation 4590 - L2 Version 001
Chandra X-Ray Center

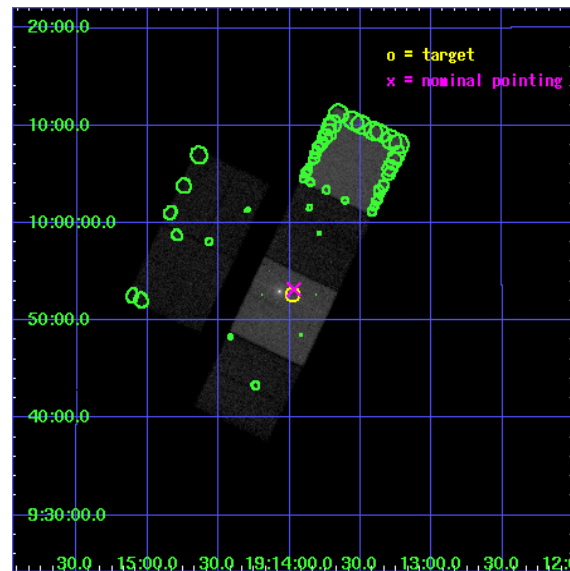
L2 Processing Date : May 18 2006

Contents

1	Front	2
2	OBI	3
2.1	OBI	3
2.1.1	Images	3
2.1.2	Bias	3
2.1.3	Parameters	4
2.1.4	Events	4
2.2	Compared Parameters	5
2.3	Aspect	6
2.4	Star Slots	9
2.4.1	Slot 3	9
2.4.2	Slot 4	10
2.4.3	Slot 5	11
2.4.4	Slot 6	12
2.4.5	Slot 7	13
2.5	FID Slots	14
2.5.1	Slot 0	14
2.5.2	Slot 1	15
2.5.3	Slot 2	16
3	Point Sources	17
A	Summary	18
A.1	Status	18
A.2	Comments	18

1 Front

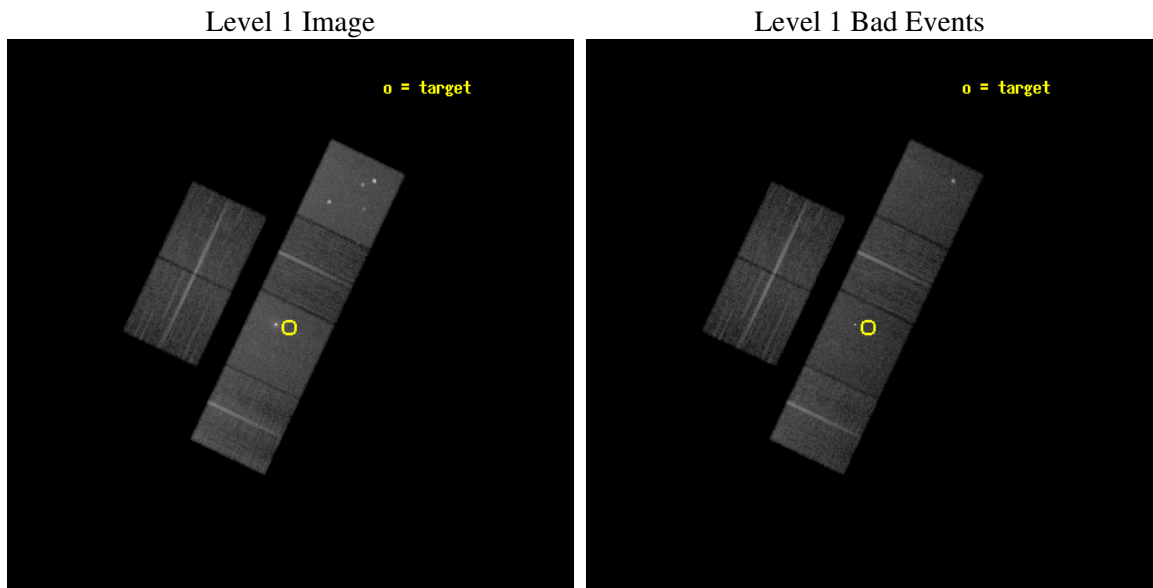
seq_num	400372
obs_id	4590
title	The Low-luminosity X-ray binary EXO 1912+097
observer	Dr Mariano Mendez
object	EXO 1912+097
dtcycle	0
cycle	P
ra_targ	288.495
dec_targ	9.876944
ra_nom	288.49241097421
dec_nom	9.8862843811341
roll_nom	115.43576612381
revision	2
ontime	20358.399924159
livetime	20100.609605963
ontime2	20355.158943892
ontime3	20358.399924159
ontime5	20358.399924159
ontime6	20358.399924159
ontime7	20358.399924159
ontime8	20358.399924159
l2events	234304



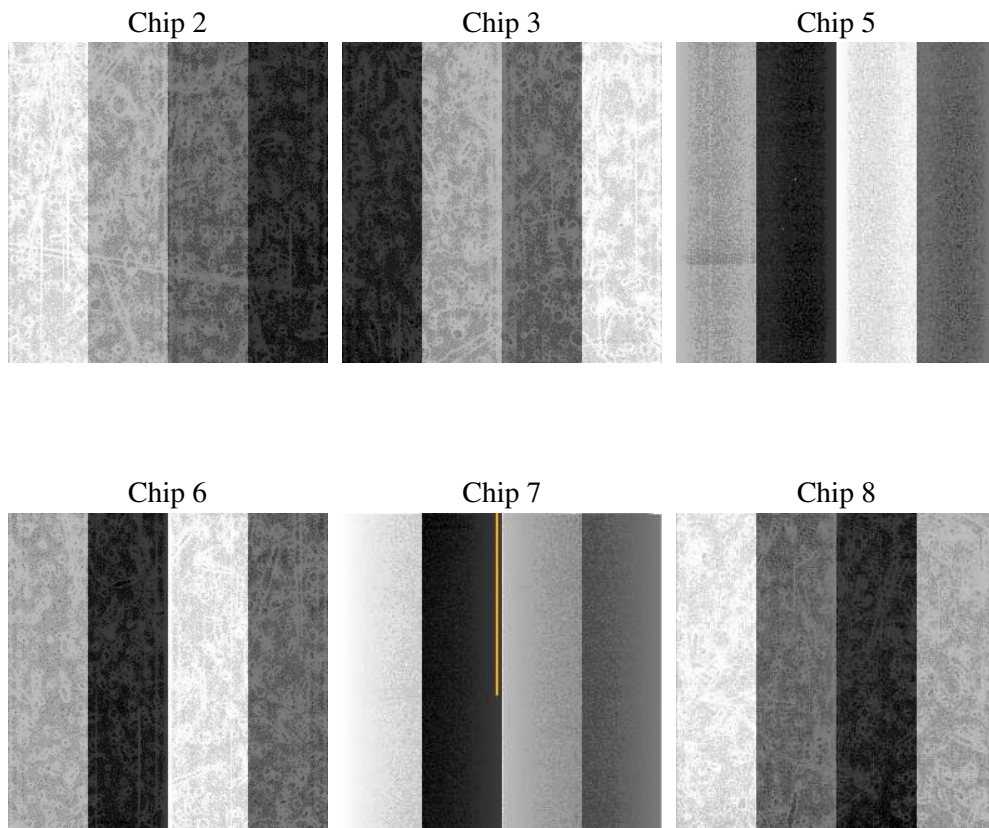
2 OBI

2.1 OBI

2.1.1 Images



2.1.2 Bias



2.1.3 Parameters

obi_num	0
ascdsver	7.6.7.2
caldsver	3.2.2
date	2006-05-19T00:03:06
revision	2

sched_exp_time	20400.000000
ontime	20363.251598954
ontime2	20360.010618687
ontime3	20363.251579016
ontime5	20363.251598954
ontime6	20363.251579016
ontime7	20363.251598954
ontime8	20363.251579016
l1events	1047372

2.1.4 Events

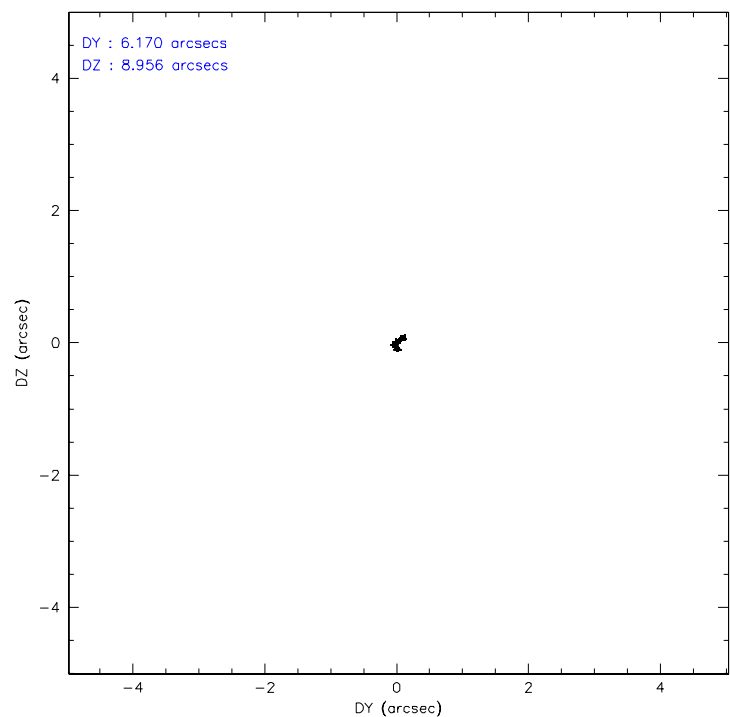
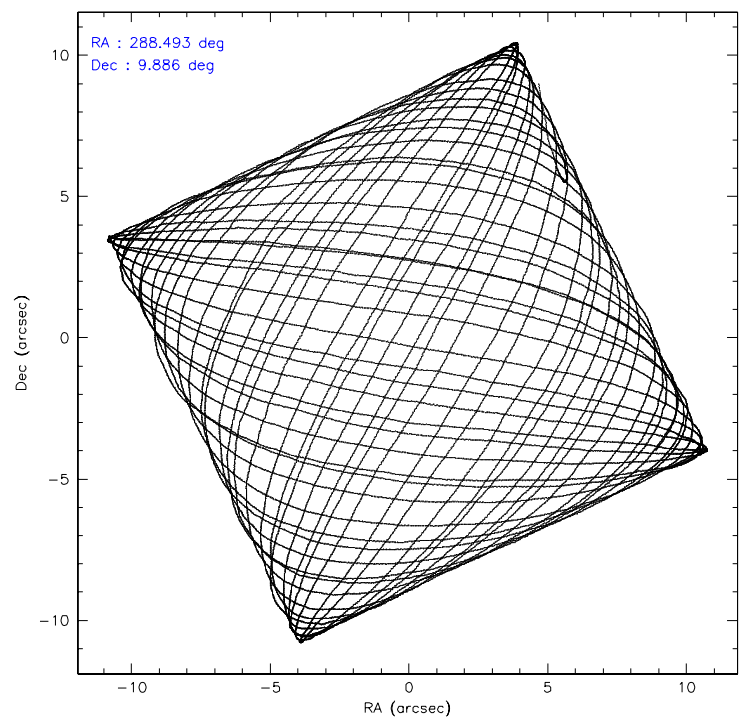
	ccd 2	ccd 3	ccd 5	ccd 6	ccd 7	ccd 8
level 1 events	144238	139648	222333	146816	209304	185033
rejected events	126993	123123	122291	128927	124425	146520
rejected %	88%	88%	55%	87%	59%	79%

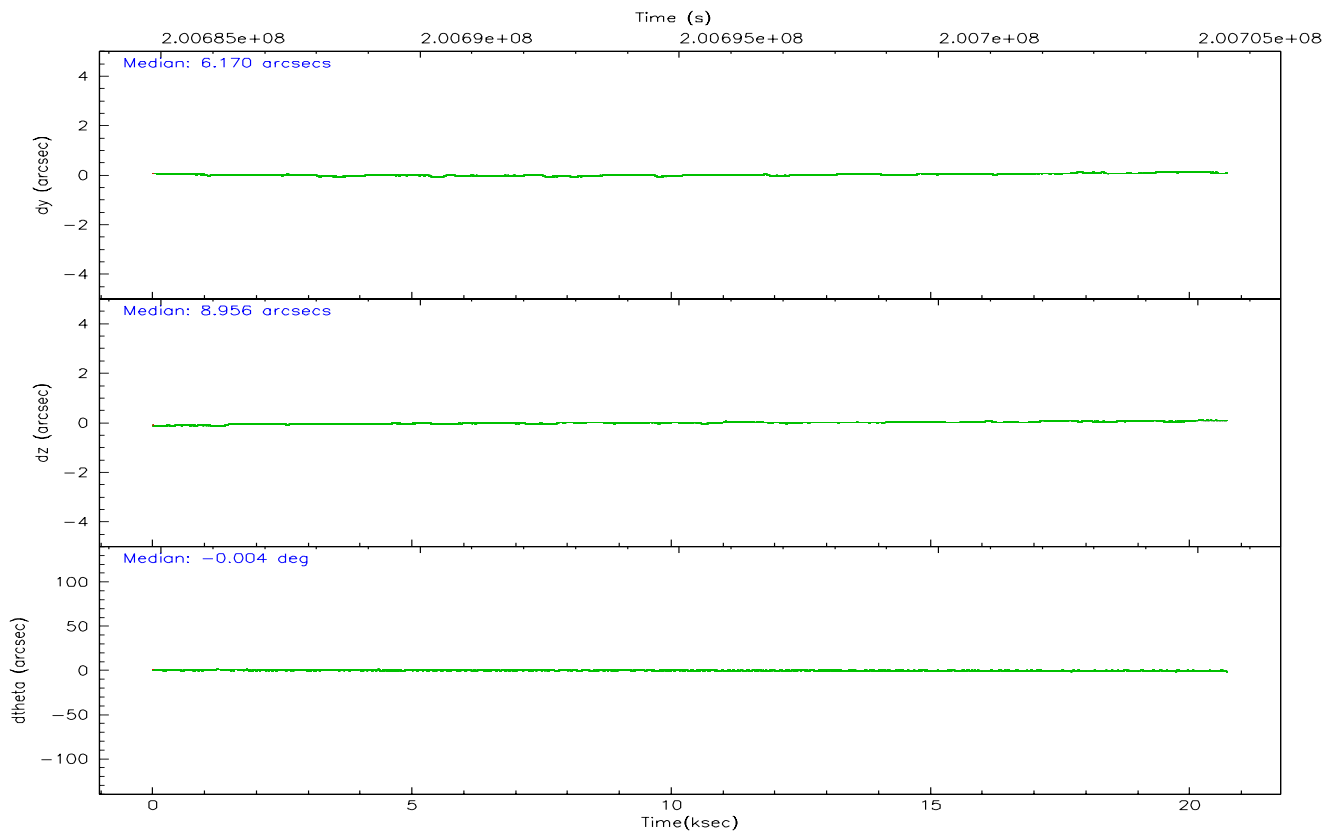
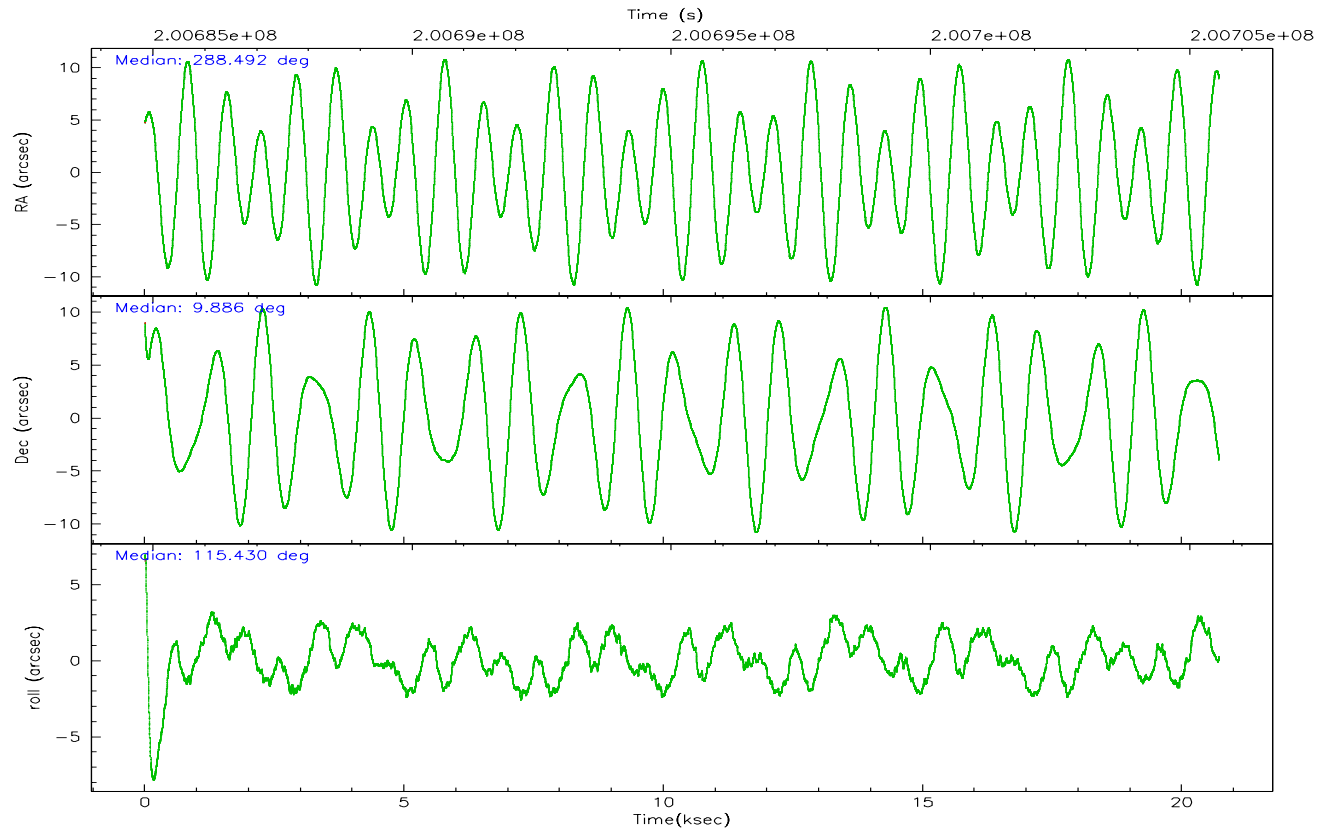
	ccd 2	ccd 3	ccd 5	ccd 6	ccd 7	ccd 8
grade 0 events	7698	7160	9778	7317	5513	12228
	5%	5%	4%	4%	2%	6%
grade 1 events	110	92	2040	66	176	118
	0%	0%	0%	0%	0%	0%
grade 2 events	3447	3174	31883	3571	21432	8365
	2%	2%	14%	2%	10%	4%
grade 3 events	1642	1655	2033	1734	4655	4084
	1%	1%	0%	1%	2%	2%
grade 4 events	1654	1606	1982	1717	4430	3894
	1%	1%	0%	1%	2%	2%
grade 5 events	5847	6306	10366	6779	13488	8696
	4%	4%	4%	4%	6%	4%
grade 6 events	2810	2933	54402	3554	48876	9946
	1%	2%	24%	2%	23%	5%
grade 7 events	121030	116722	109849	122078	110734	137702
	83%	83%	49%	83%	52%	74%

2.2 Compared Parameters

Parameter	Planned	Actual	Parameter	Planned	Actual
Instrument	ACIS	ACIS	Obspar format version number	6	6
Detector	ACIS-235678	ACIS-235678	Obspar file type	PREDICTED	ACTUAL
Grating	NONE	NONE	Obspar update status	NONE	UPDATED
Data mode	FAINT	FAINT	On-chip summing requested	N	N
Observation mode	POINTING	POINTING	Subarray requested	NONE	NONE
Pointing RA	288.515374	288.4924109742056	Alternating exposures requested	N	N
Pointing Dec	9.871124	9.886284381134109	Primary exposure time	0.000000	3.2
Pointing Roll	115.275192	115.4357661238087			
SIM focus pos (mm)	-0.684267	-0.6828225247311905			
SIM defocus (mm)	0	0.001444936568705701			
SIM translation stage pos (mm)	-190.132523	-190.1400660498719			
SIM translation stage offset (mm)	0	0.00754346686406393			
Observation start time	200685173.184000	200684145.7219			
Observation start date	2004-05-11T17:51:49	2004-05-11T17:35:45			
Observation end time	200705573.184000	200706228.32287			
Observation end date	2004-05-11T23:31:49	2004-05-11T23:43:48			
Read mode	TIMED	TIMED			

2.3 Aspect



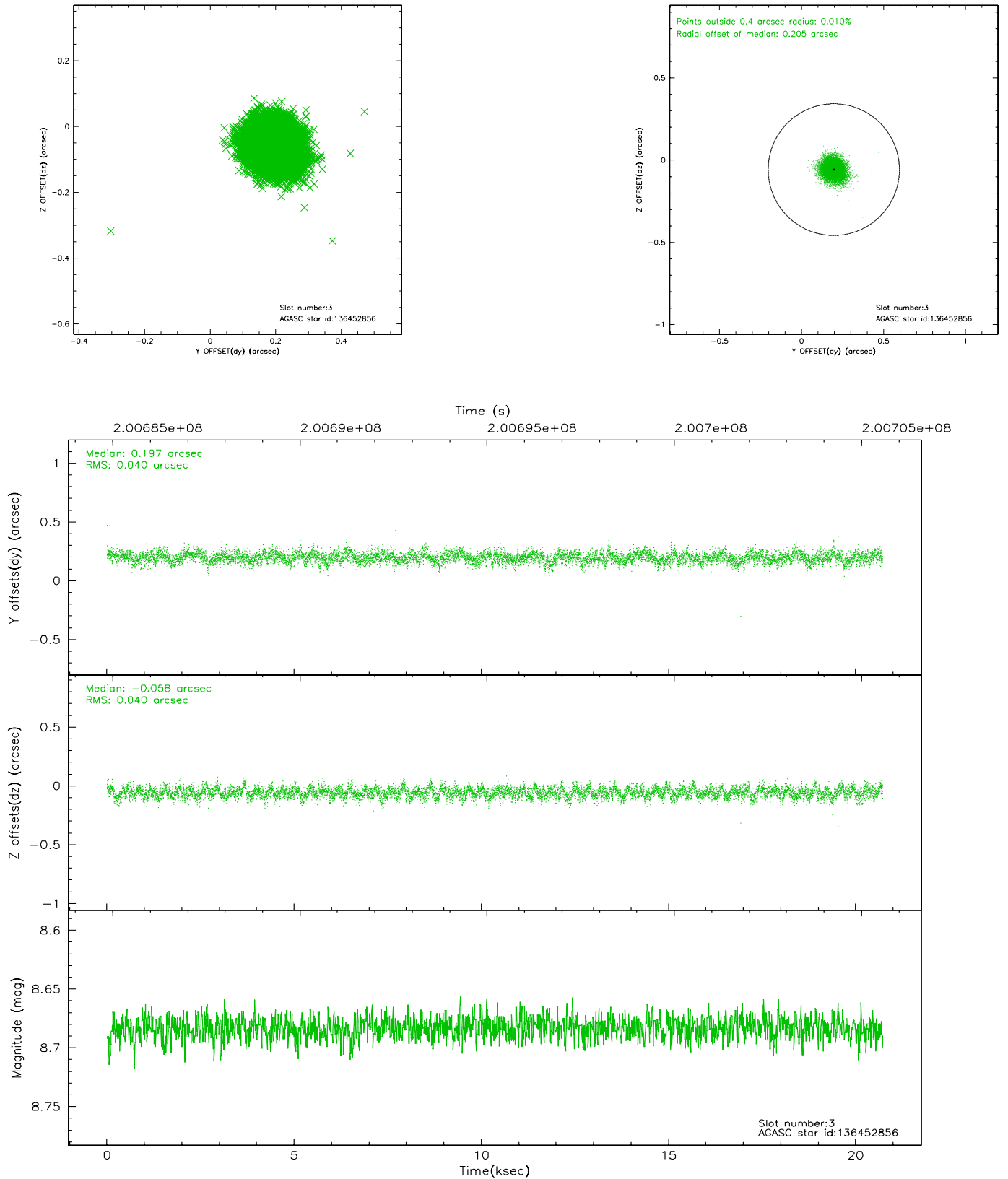


Slot Statistics

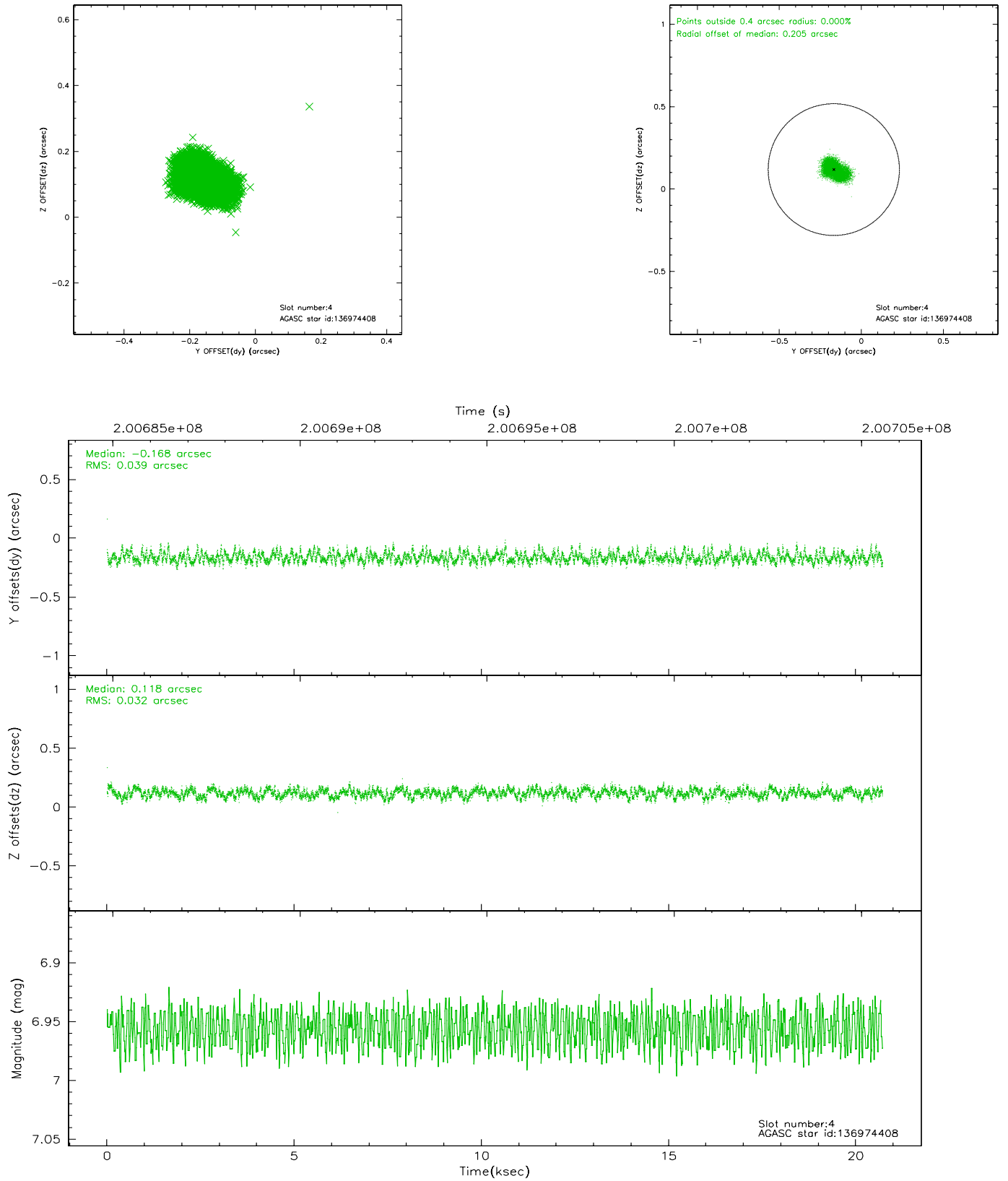
slot	status	id	mag	n_pts	med_dy	med_dz	dr1	dr2	ra	dec	mean_y	mean_z
0	FID	ACIS-S-2	7.10	5054	-0.038	-0.025	0.007	0.011	0.000000	0.000000	-758.95	-1730.20
1	FID	ACIS-S-4	7.20	5054	0.047	0.025	0.005	0.009	0.000000	0.000000	2154.33	178.15
2	FID	ACIS-S-5	7.23	5054	-0.041	0.009	0.006	0.010	0.000000	0.000000	-1811.57	172.01
3	GUIDE	136452856	8.68	10102	0.197	-0.058	0.060	0.098	288.703253	9.318908	-2082.13	245.18
4	GUIDE	136974408	6.96	10103	-0.168	0.118	0.054	0.089	288.806802	10.212409	670.52	-1458.00
5	GUIDE	136977584	8.43	10098	-0.099	0.105	0.080	0.129	288.635599	10.555283	2045.90	-1436.03
6	GUIDE	136973480	8.44	10103	-0.156	-0.139	0.066	0.108	287.924725	9.951688	1158.23	1769.34
7	GUIDE	136975784	9.22	10101	0.227	-0.025	0.077	0.124	288.508619	9.520005	-1132.33	561.69

2.4 Star Slots

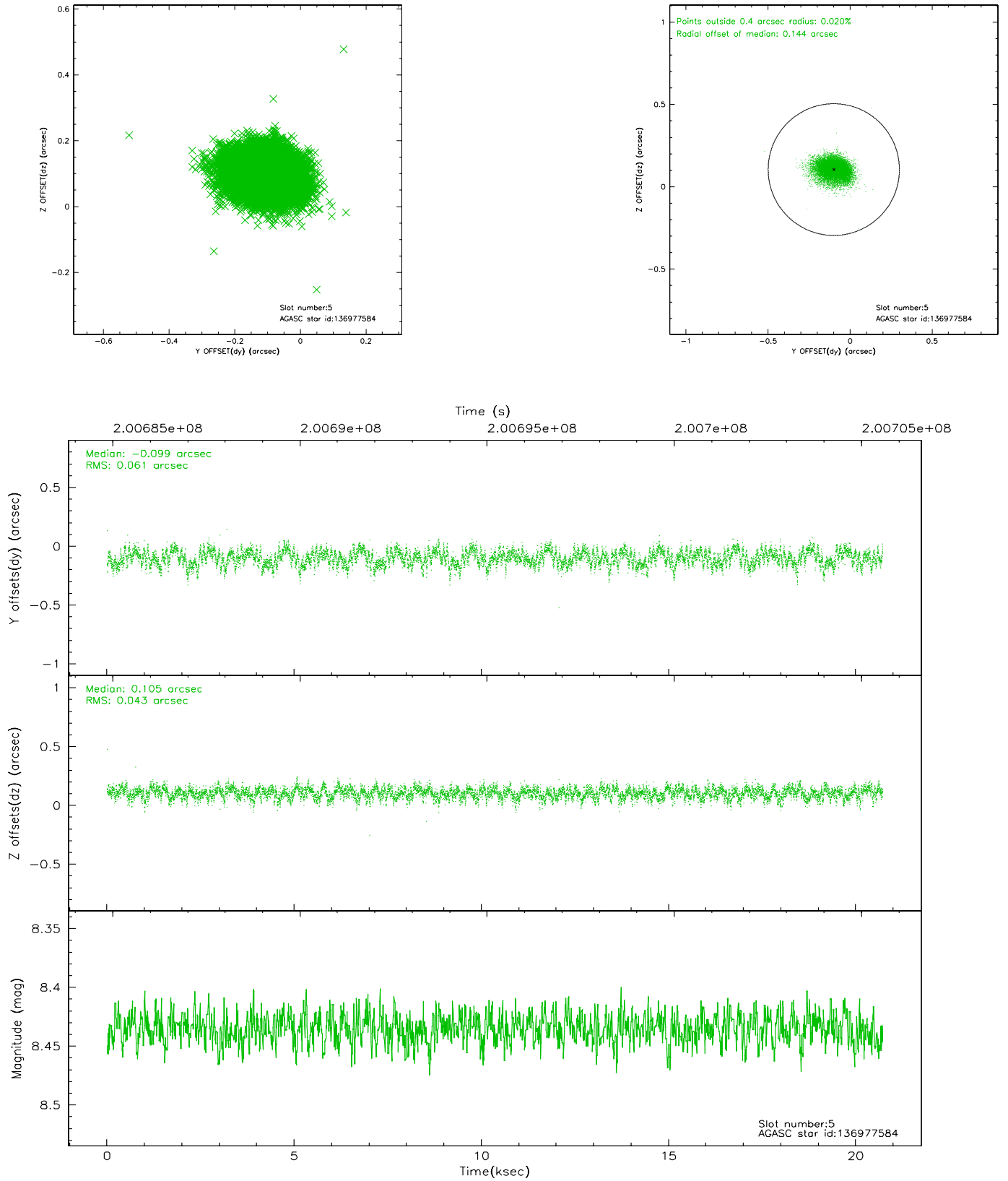
2.4.1 Slot 3



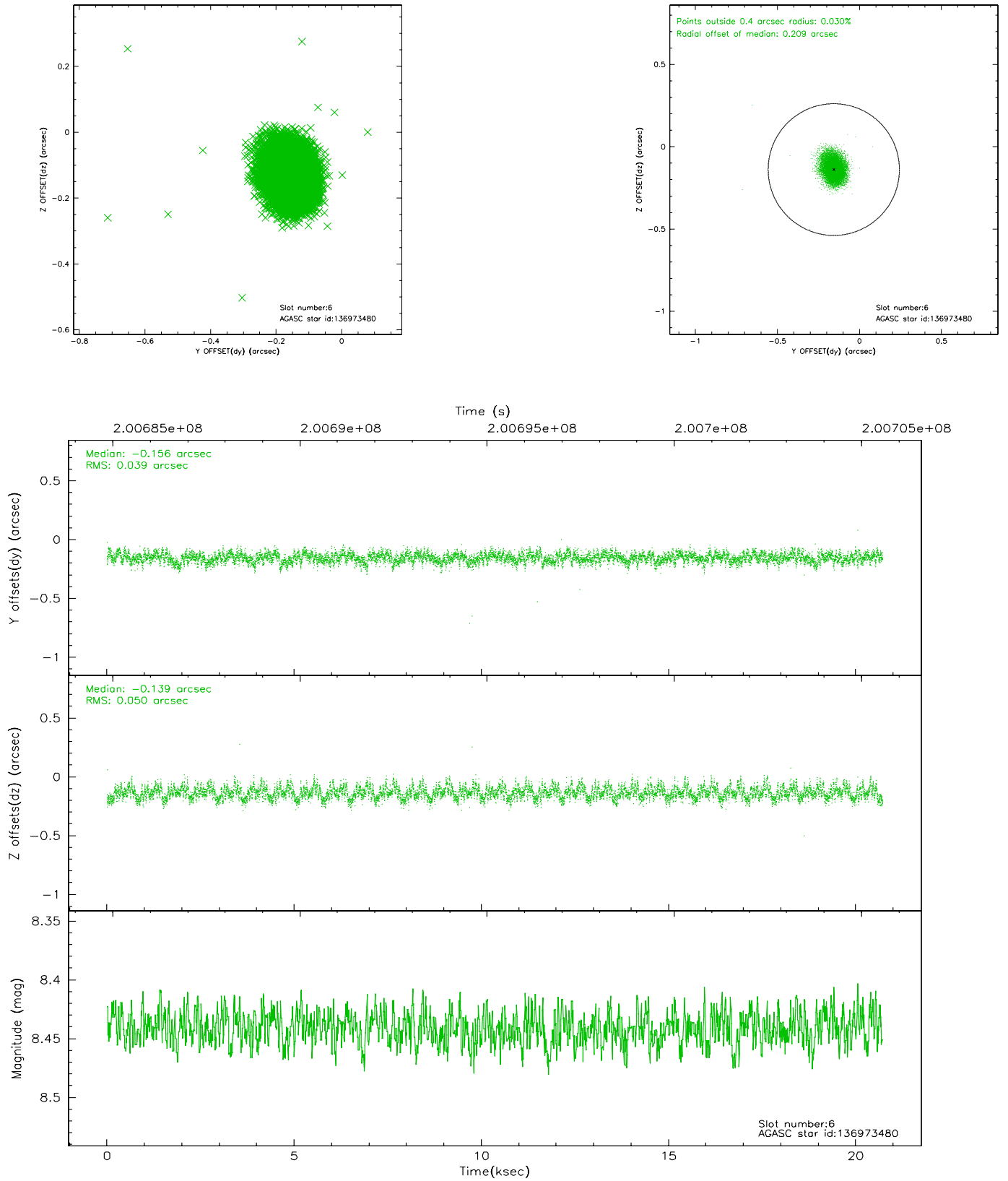
2.4.2 Slot 4



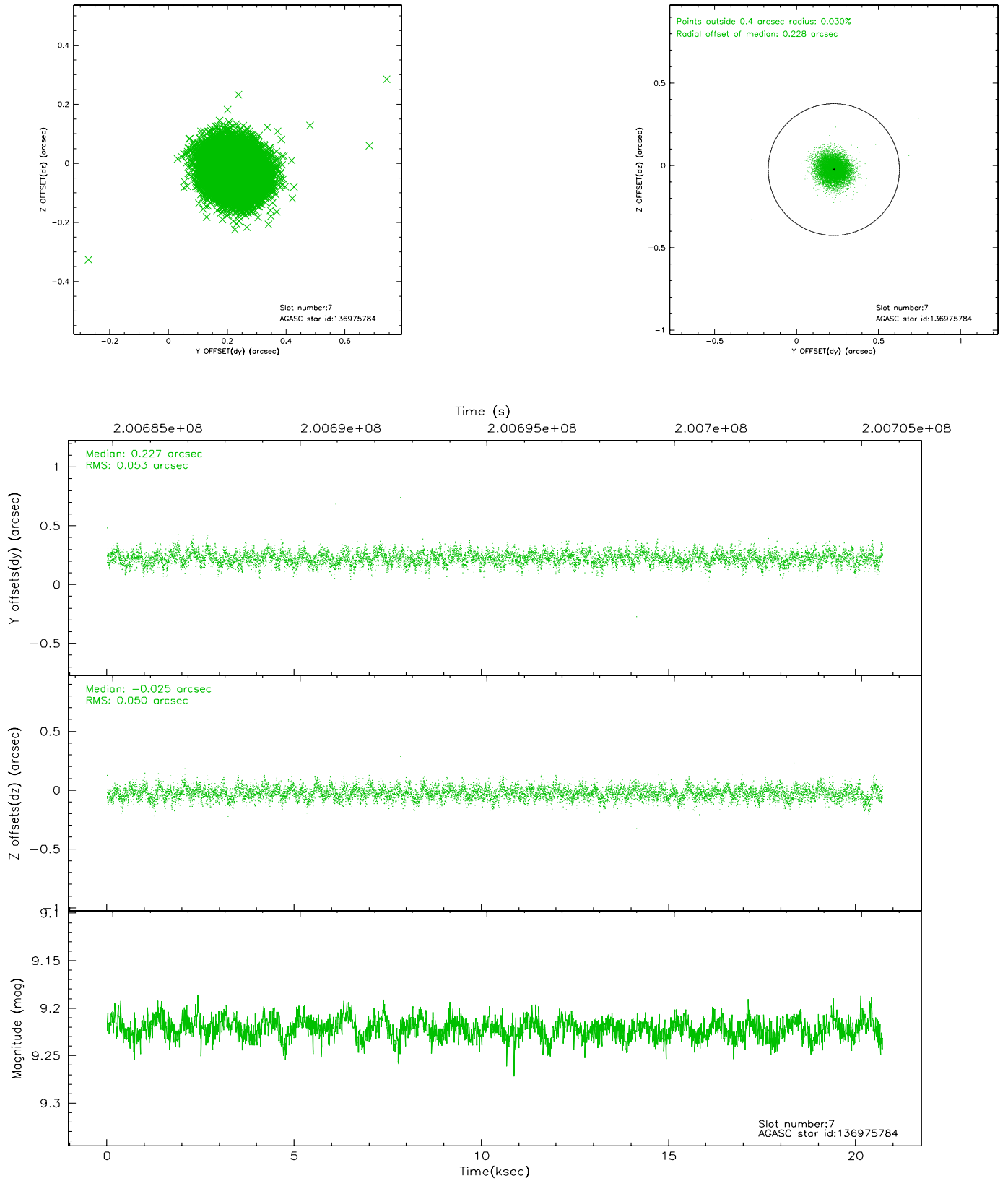
2.4.3 Slot 5



2.4.4 Slot 6

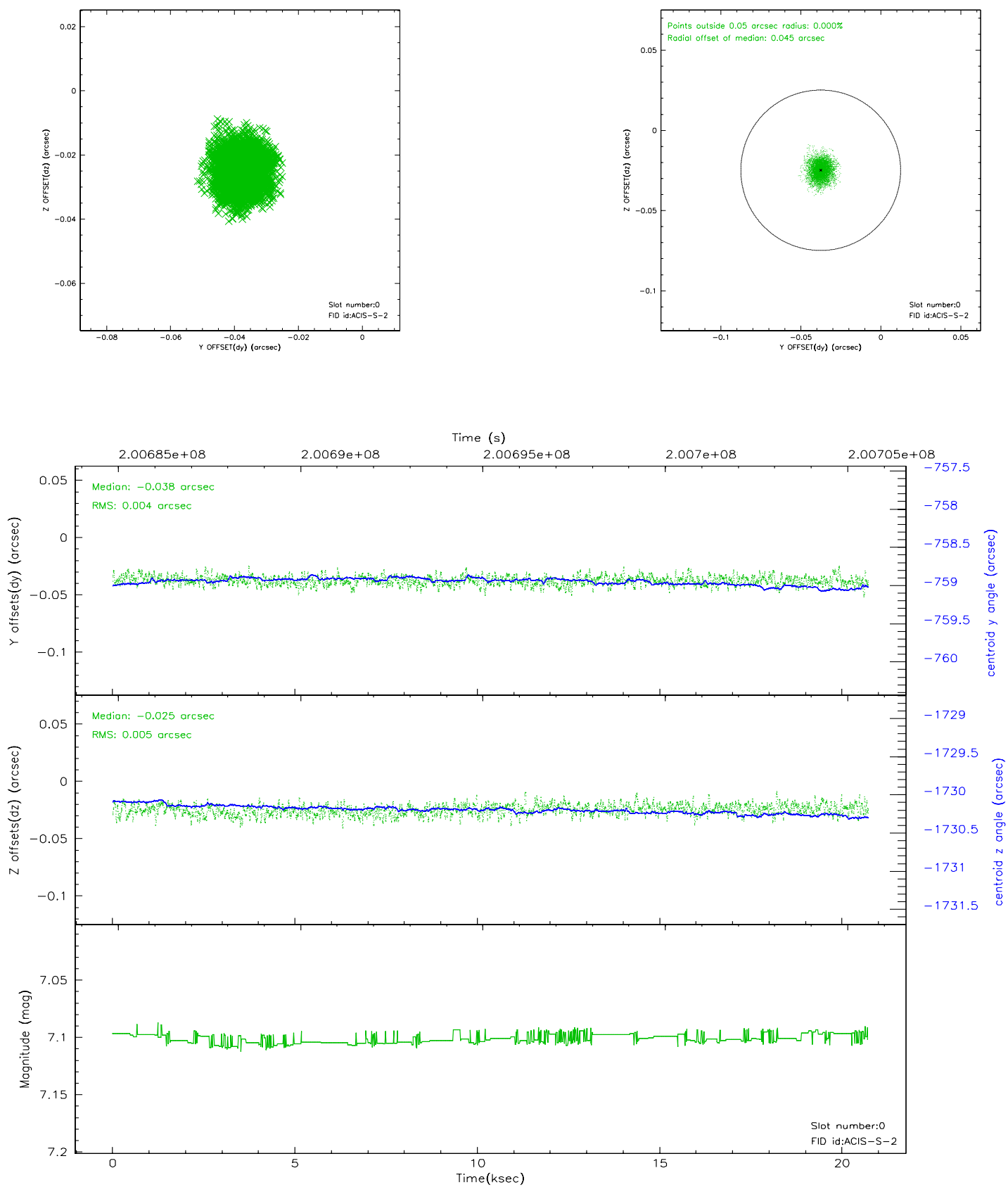


2.4.5 Slot 7

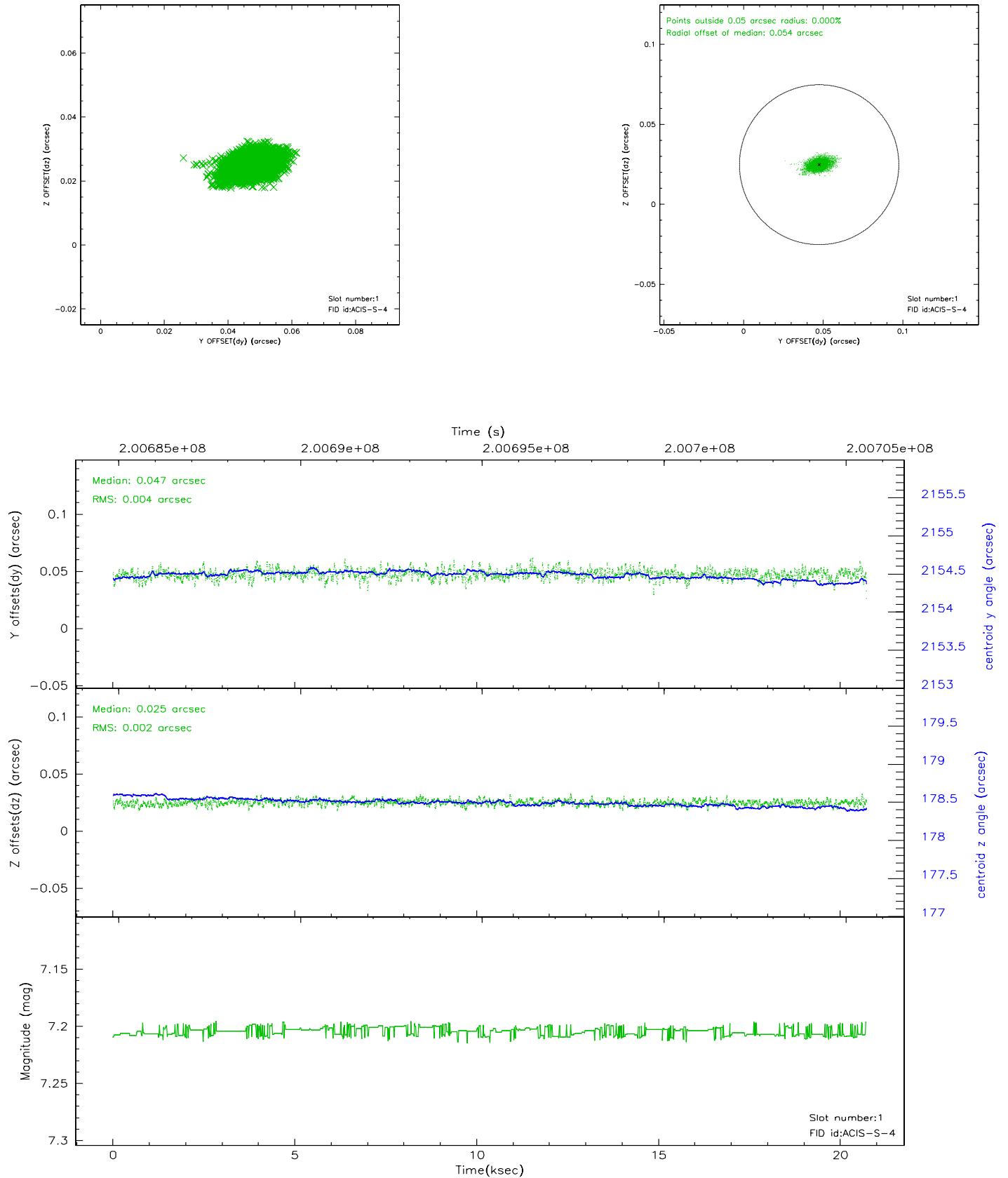


2.5 FID Slots

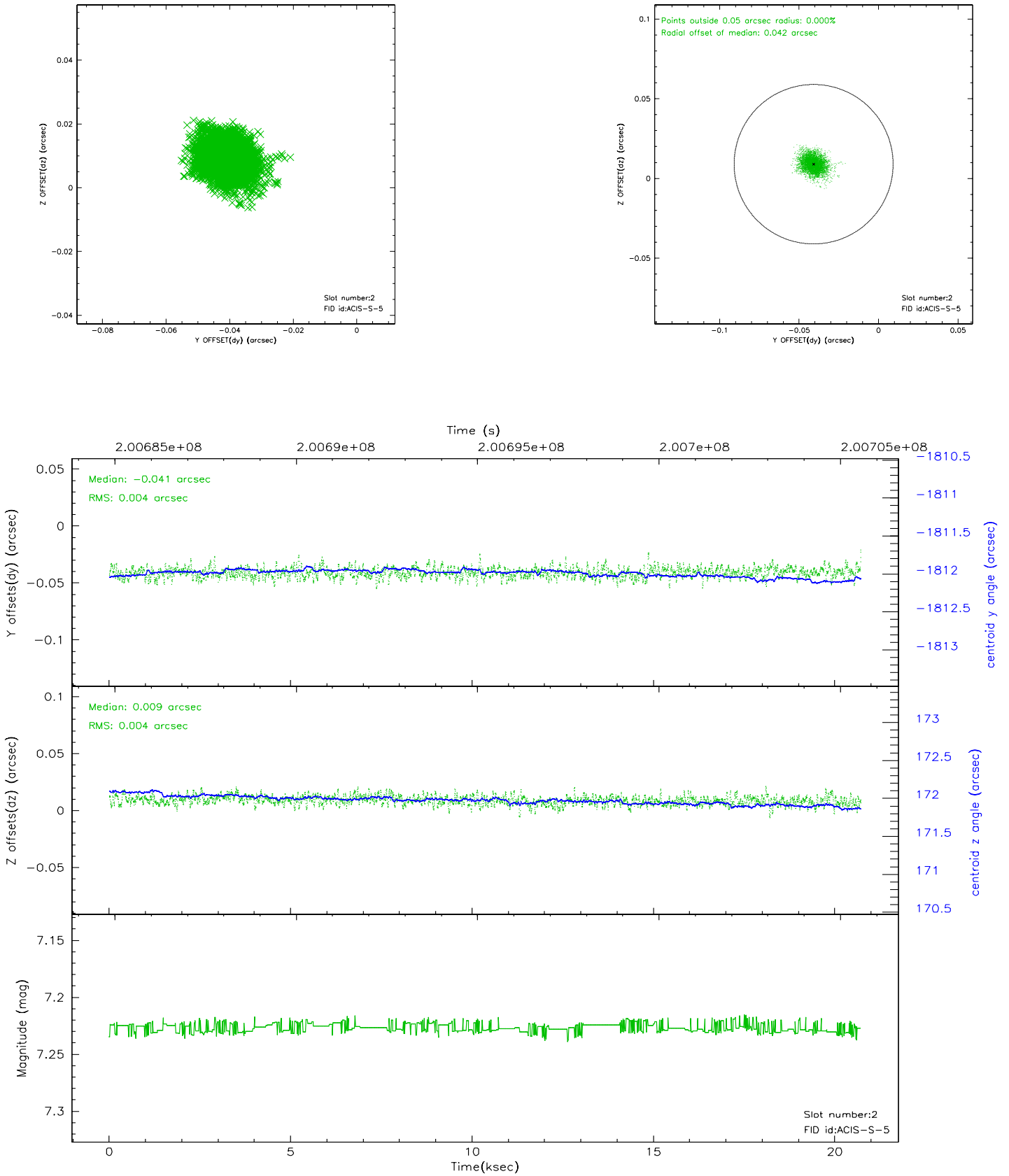
2.5.1 Slot 0



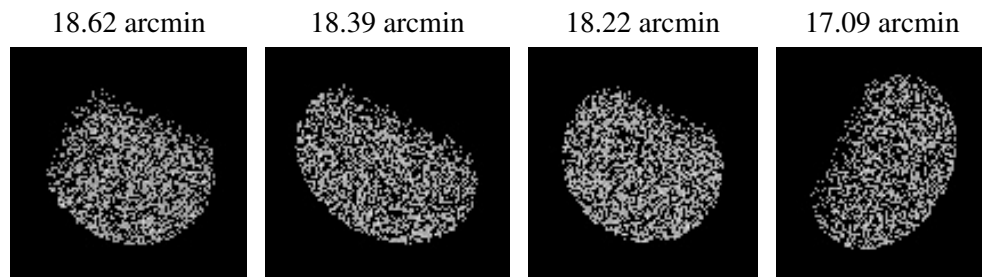
2.5.2 Slot 1



2.5.3 Slot 2



3 Point Sources



A Summary

A.1 Status

V&V Scientist	Beth Sundheim
V&V Date (YYYY-MM-DD)	2006.05.19
V&V Edition	1
V&V Disposition and Status	OK
V&V Charge Time	20.361

A.2 Comments