

V&V Reference Report

L2 ASCDS Version : 7.6.7.2

Observation 4562 - L2 Version 001
Chandra X-Ray Center

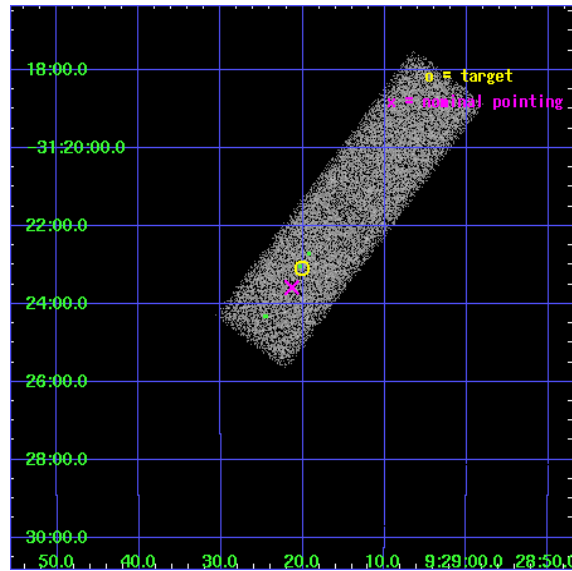
L2 Processing Date : May 29 2006

Contents

1	Front	2
2	OBI	3
2.1	OBI	3
2.1.1	Images	3
2.1.2	Bias	3
2.1.3	Parameters	4
2.1.4	Events	4
2.2	Compared Parameters	5
2.3	Aspect	6
2.4	Star Slots	9
2.4.1	Slot 3	9
2.4.2	Slot 4	10
2.4.3	Slot 5	11
2.4.4	Slot 6	12
2.4.5	Slot 7	13
2.5	FID Slots	14
2.5.1	Slot 0	14
2.5.2	Slot 1	15
2.5.3	Slot 2	16
3	Point Sources	17
A	Summary	18
A.1	Status	18
A.2	Comments	18

1 Front

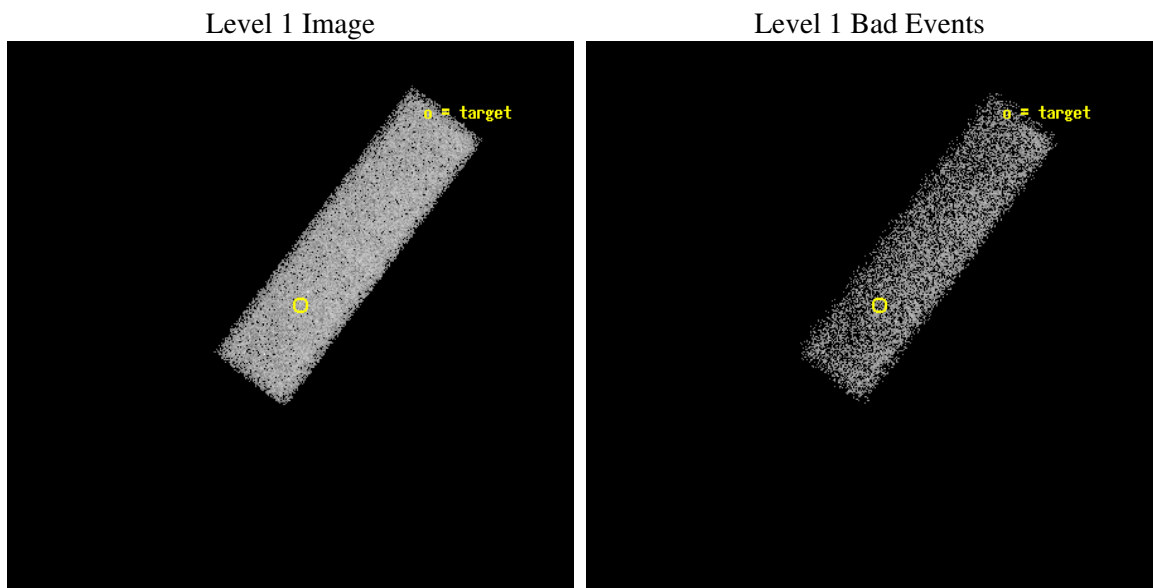
seq_num	400345
obs_id	4562
title	Chandra observations of accretion-driven millisecond X-ray pulsars in quiescence
observer	Dr. Rudy Wijnands
object	XTE J0929-314
dtcycle	0
cycle	P
ra_targ	142.33375
dec_targ	-31.384528
ra_nom	142.33886313543
dec_nom	-31.393150757592
roll_nom	306.97180074884
revision	2
ontime	25700.00038296
livetime	24445.924458252
ontime7	25700.00038296
l2events	23920



2 OBI

2.1 OBI

2.1.1 Images



2.1.2 Bias

Chip 7



2.1.3 Parameters

obi_num	0
ascdsver	7.6.7.2
caldbver	3.2.2
date	2006-05-29T15:29:11
revision	2

sched_exp_time	25181.000000
ontime	25770.909761339
ontime7	25770.909761339
l1events	60169

2.1.4 Events

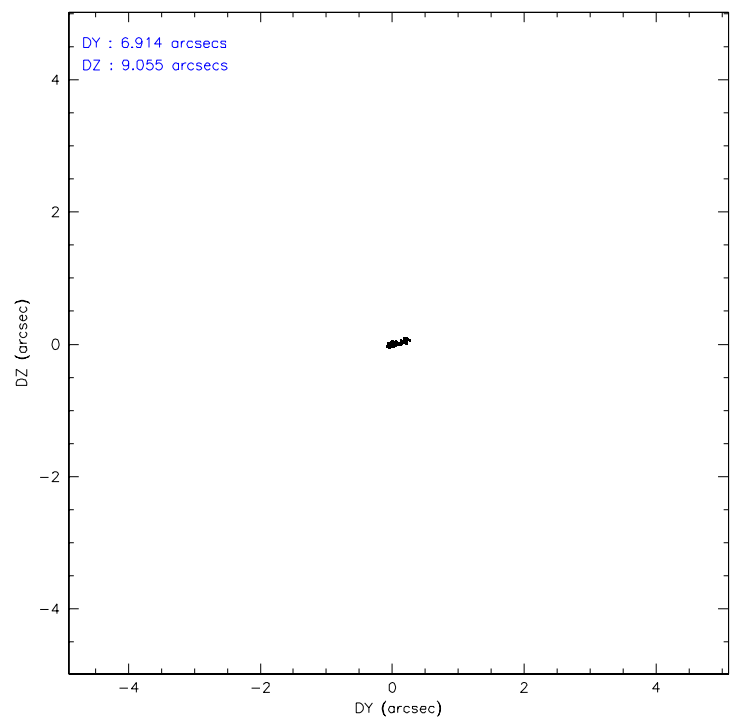
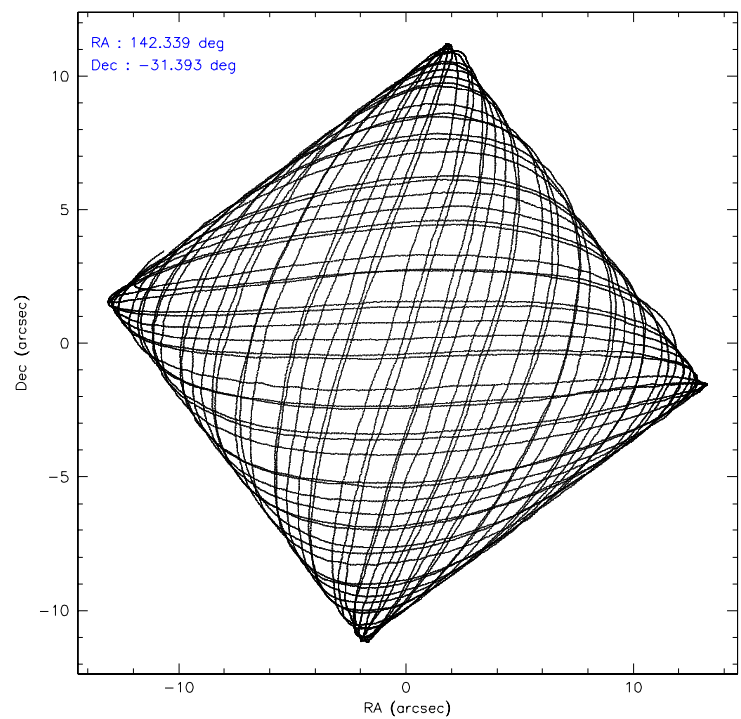
	ccd 7
level 1 events	60169
rejected events	35432
rejected %	58%

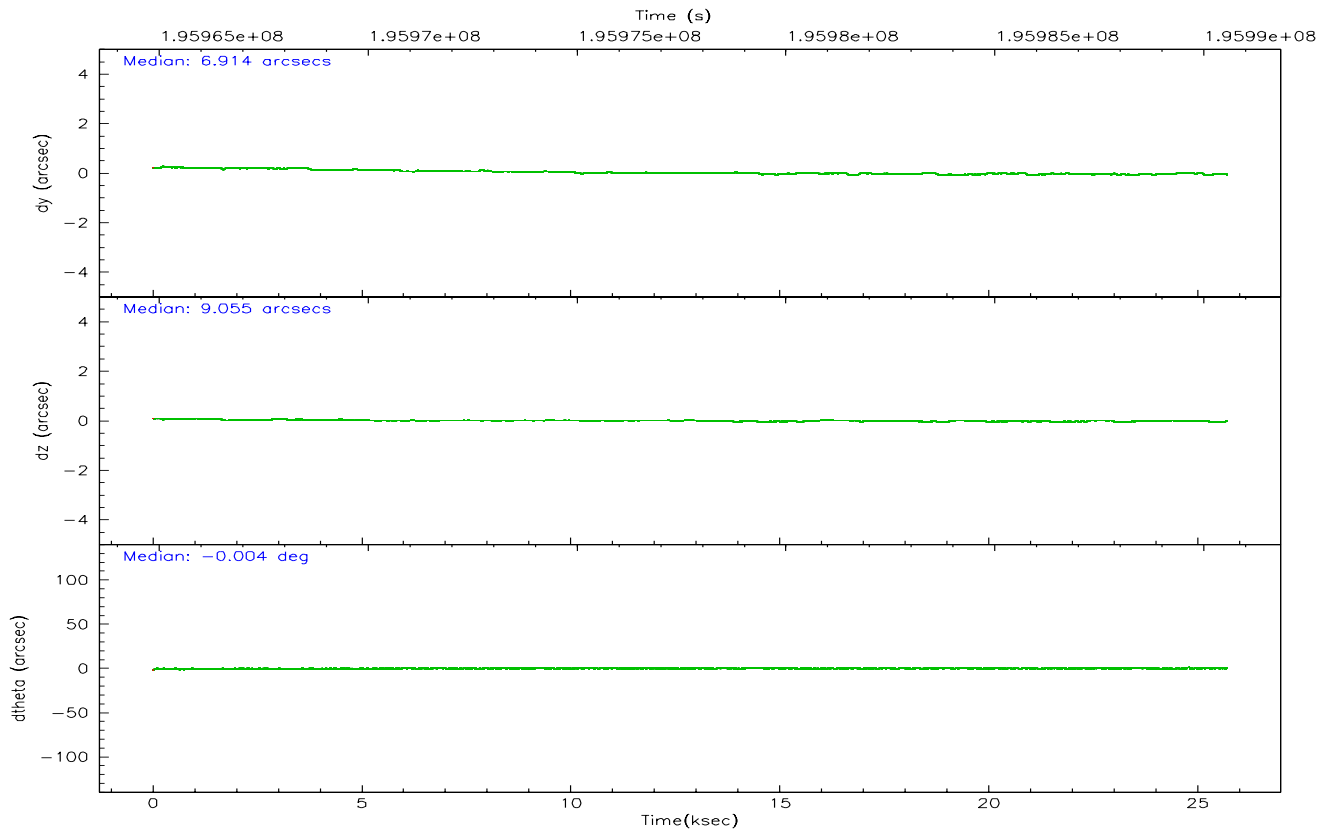
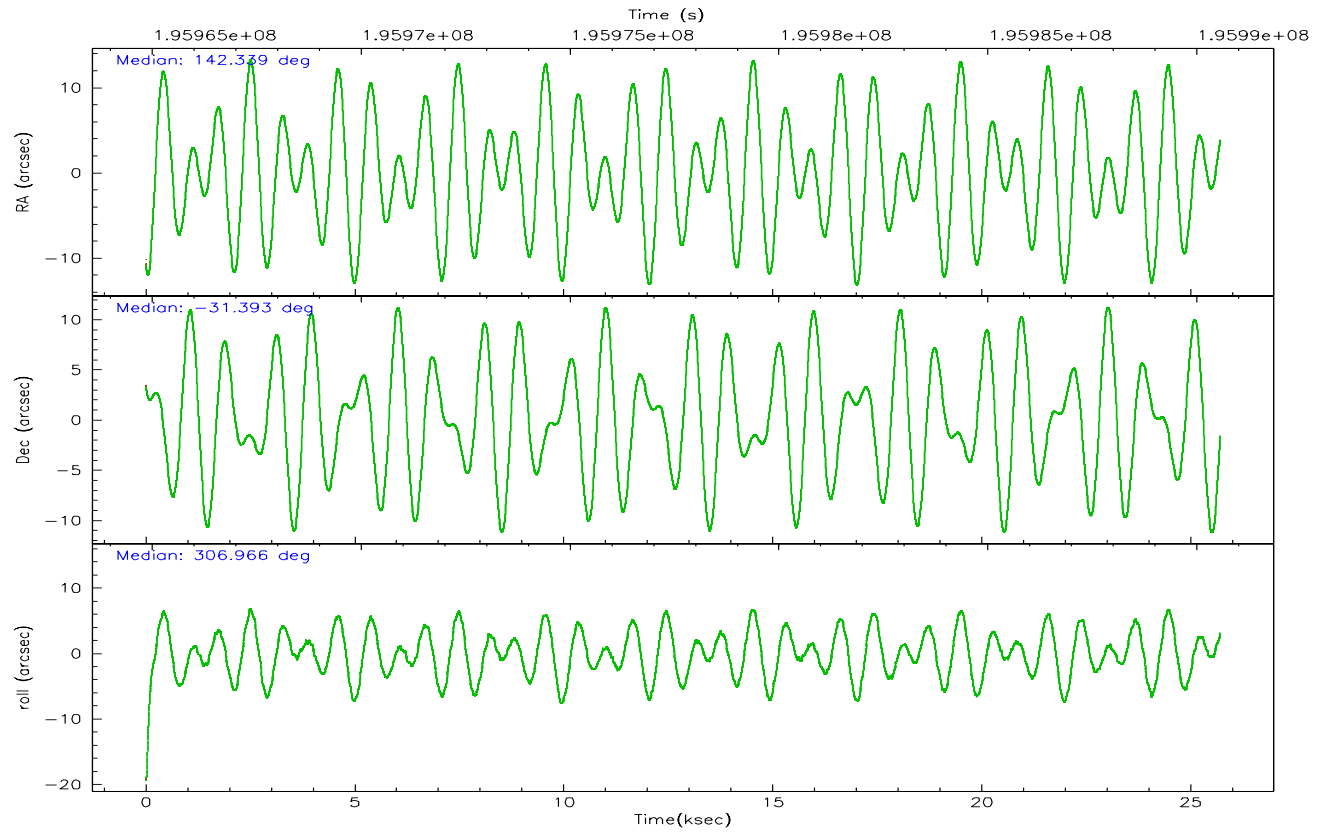
	ccd 7
grade 0 events	1568
	2%
grade 1 events	35
	0%
grade 2 events	6028
	10%
grade 3 events	1955
	3%
grade 4 events	1840
	3%
grade 5 events	4339
	7%
grade 6 events	13403
	22%
grade 7 events	31001
	51%

2.2 Compared Parameters

Parameter	Planned	Actual	Parameter	Planned	Actual
Instrument	ACIS	ACIS	Obspar format version number	6	6
Detector	ACIS-7	ACIS-7	Obspar file type	PREDICTED	ACTUAL
Grating	NONE	NONE	Obspar update status	NONE	UPDATED
Data mode	FAINT	FAINT	On-chip summing requested	N	N
Observation mode	POINTING	POINTING	Subarray requested	1/4	1/4
Pointing RA	142.309348	142.3388631354322	Subarray start row	0	385
Pointing Dec	-31.382835	-31.39315075759189	Subarray row count	1024	256
Pointing Roll	306.799803	306.9718007488413	Alternating exposures requested	N	N
SIM focus pos (mm)	-0.684267	-0.6828225247311905	Primary exposure time	0.000000	0.8
SIM defocus (mm)	0	0.001444936568705701			
SIM translation stage pos (mm)	-190.132523	-190.1400660498719			
SIM translation stage offset (mm)	0	0.00754346686406393			
Observation start time	195965372.184000	195964245.50164			
Observation start date	2004-03-18T02:48:28	2004-03-18T02:30:45			
Observation end time	195990553.184000	195991344.96533			
Observation end date	2004-03-18T09:48:09	2004-03-18T10:02:24			
Read mode	TIMED	TIMED			

2.3 Aspect



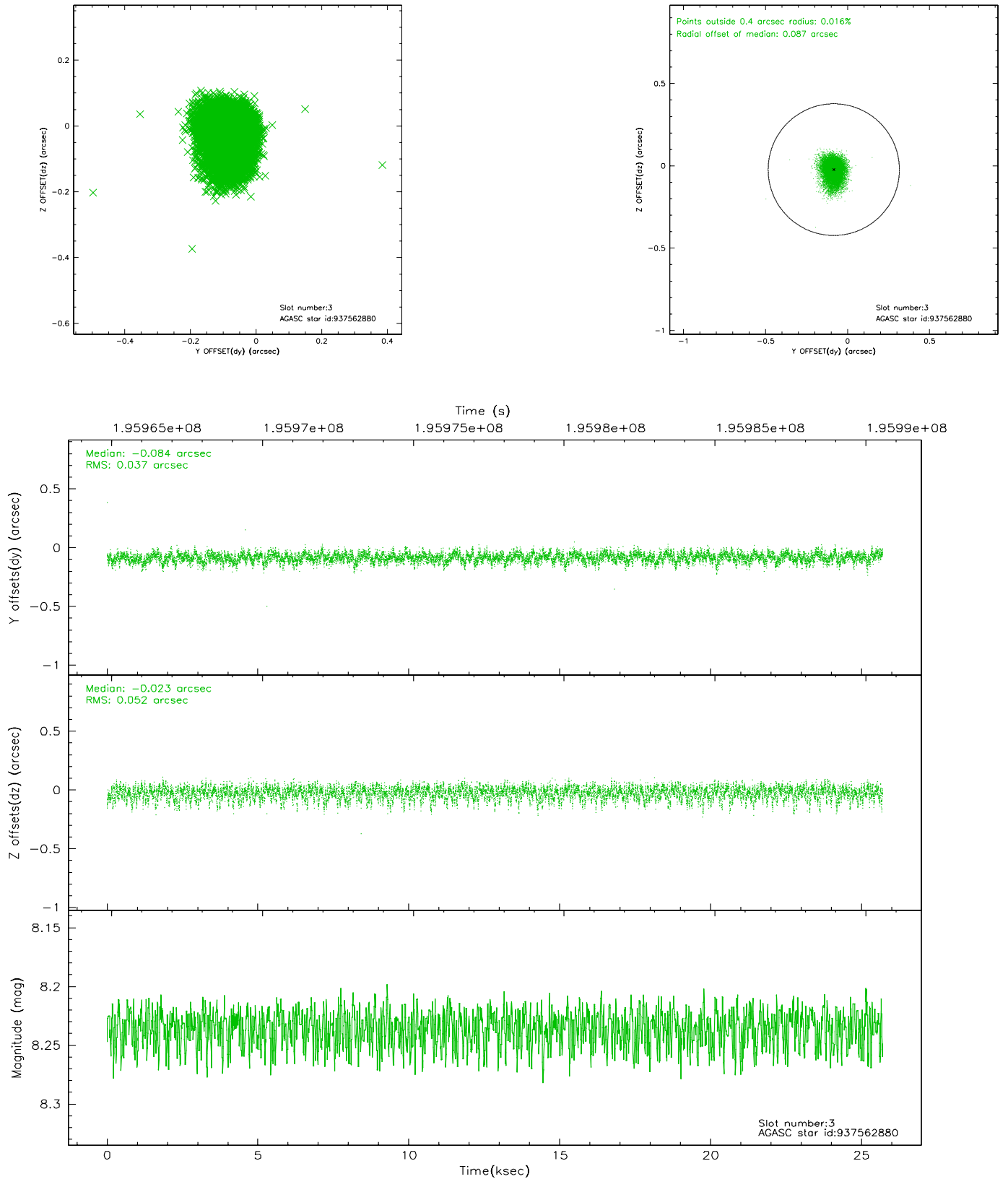


Slot Statistics

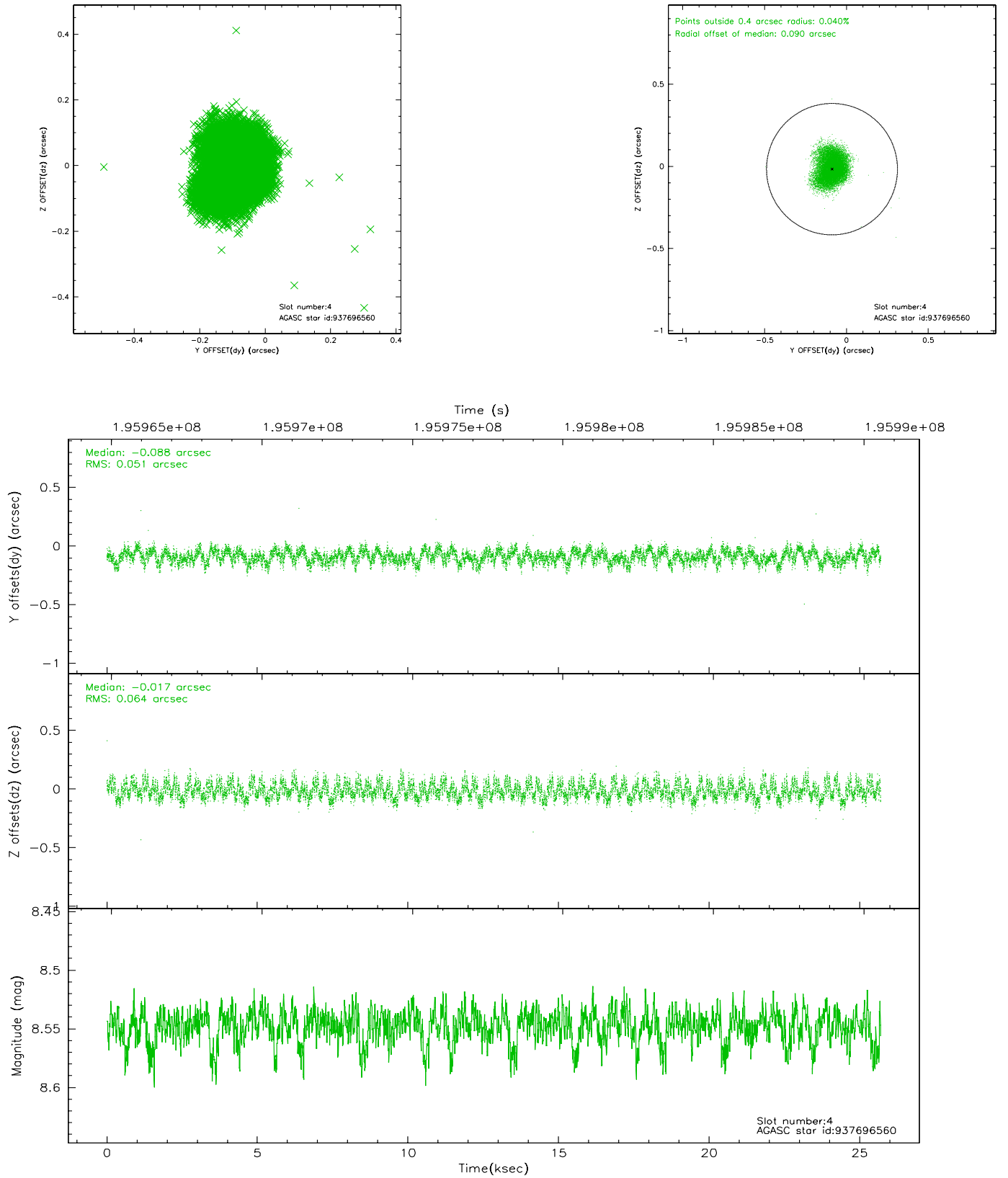
slot	status	id	mag	n_pts	med_dy	med_dz	dr1	dr2	ra	dec	mean_y	mean_z
0	FID	ACIS-S-2	7.10	6269	-0.019	-0.005	0.006	0.011	0.000000	0.000000	-759.71	-1730.29
1	FID	ACIS-S-4	7.20	6269	0.016	0.010	0.005	0.009	0.000000	0.000000	2153.54	178.11
2	FID	ACIS-S-5	7.23	6269	-0.029	0.004	0.006	0.011	0.000000	0.000000	-1812.43	171.88
3	GUIDE	937562880	8.24	12537	-0.084	-0.023	0.066	0.114	141.495546	-31.369017	-1530.49	-1978.74
4	GUIDE	937696560	8.55	12537	-0.088	-0.017	0.088	0.137	143.127288	-31.389604	1532.62	1992.76
5	GUIDE	937697504	9.31	12532	0.005	0.060	0.090	0.142	142.201640	-31.796736	996.38	-1156.03
6	GUIDE	937698384	7.86	12537	0.038	0.062	0.060	0.094	141.887562	-31.505027	-420.80	-1301.51
7	GUIDE	937702016	7.40	12537	0.133	-0.082	0.049	0.077	142.591301	-31.549956	1000.87	331.53

2.4 Star Slots

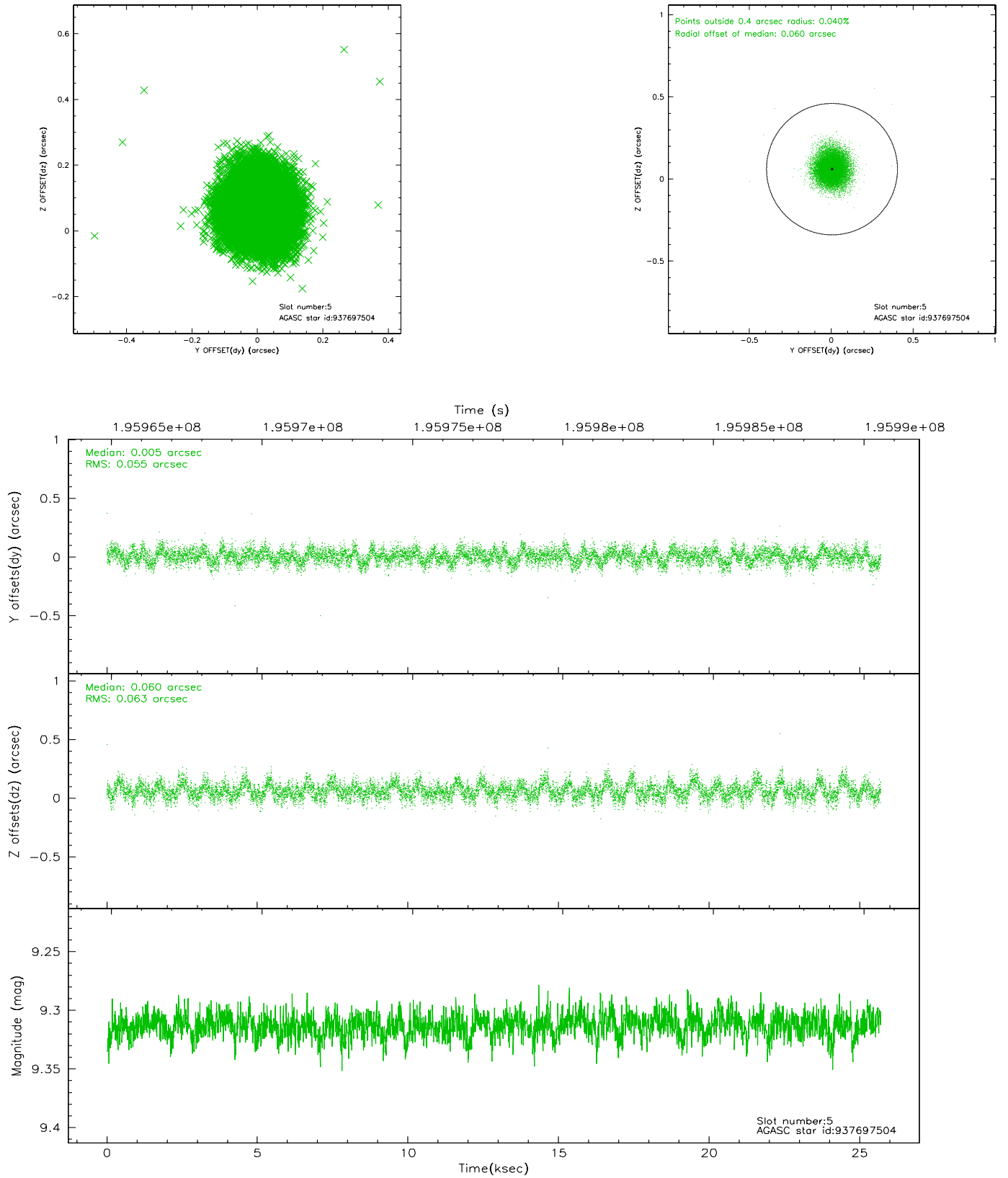
2.4.1 Slot 3



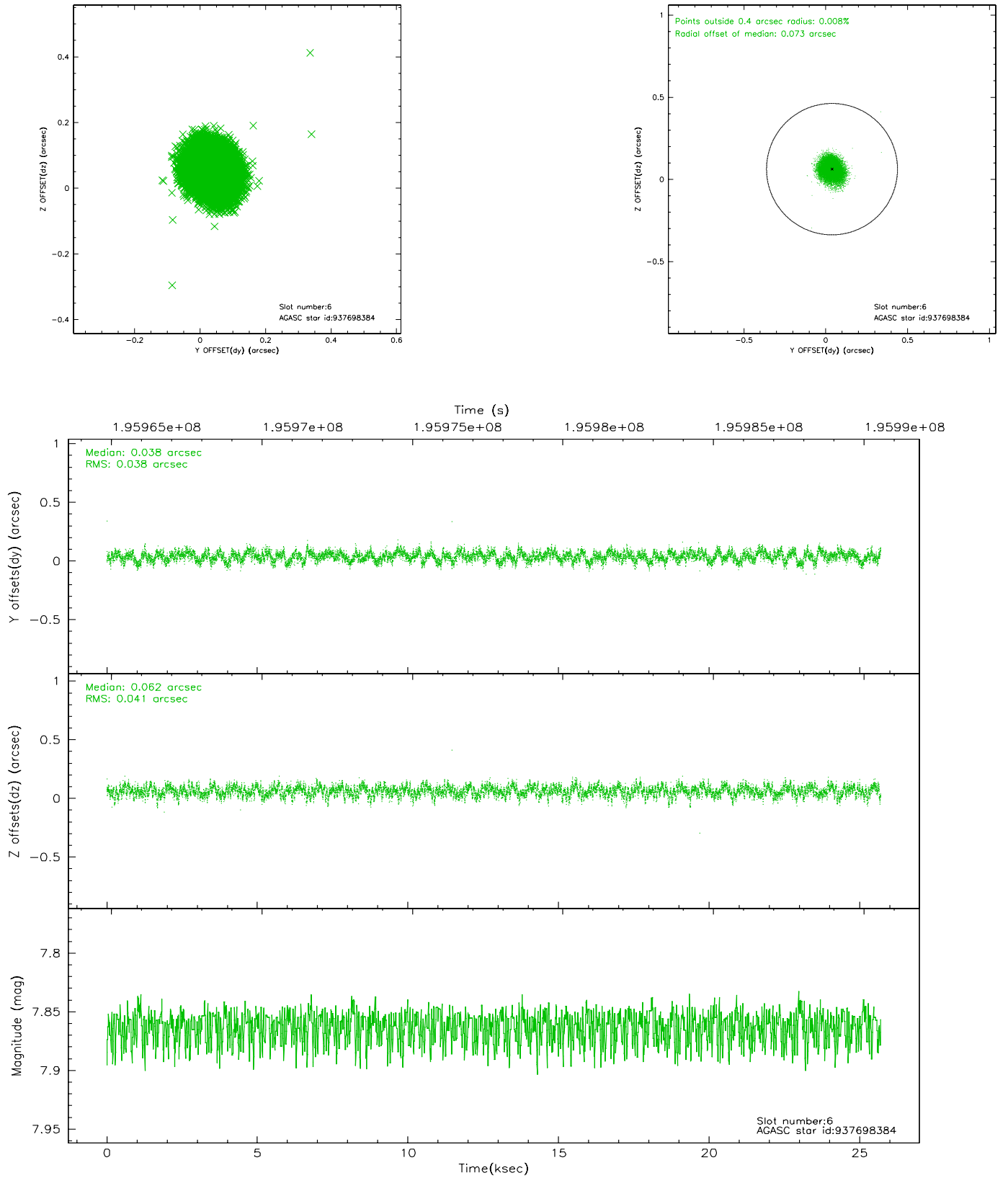
2.4.2 Slot 4



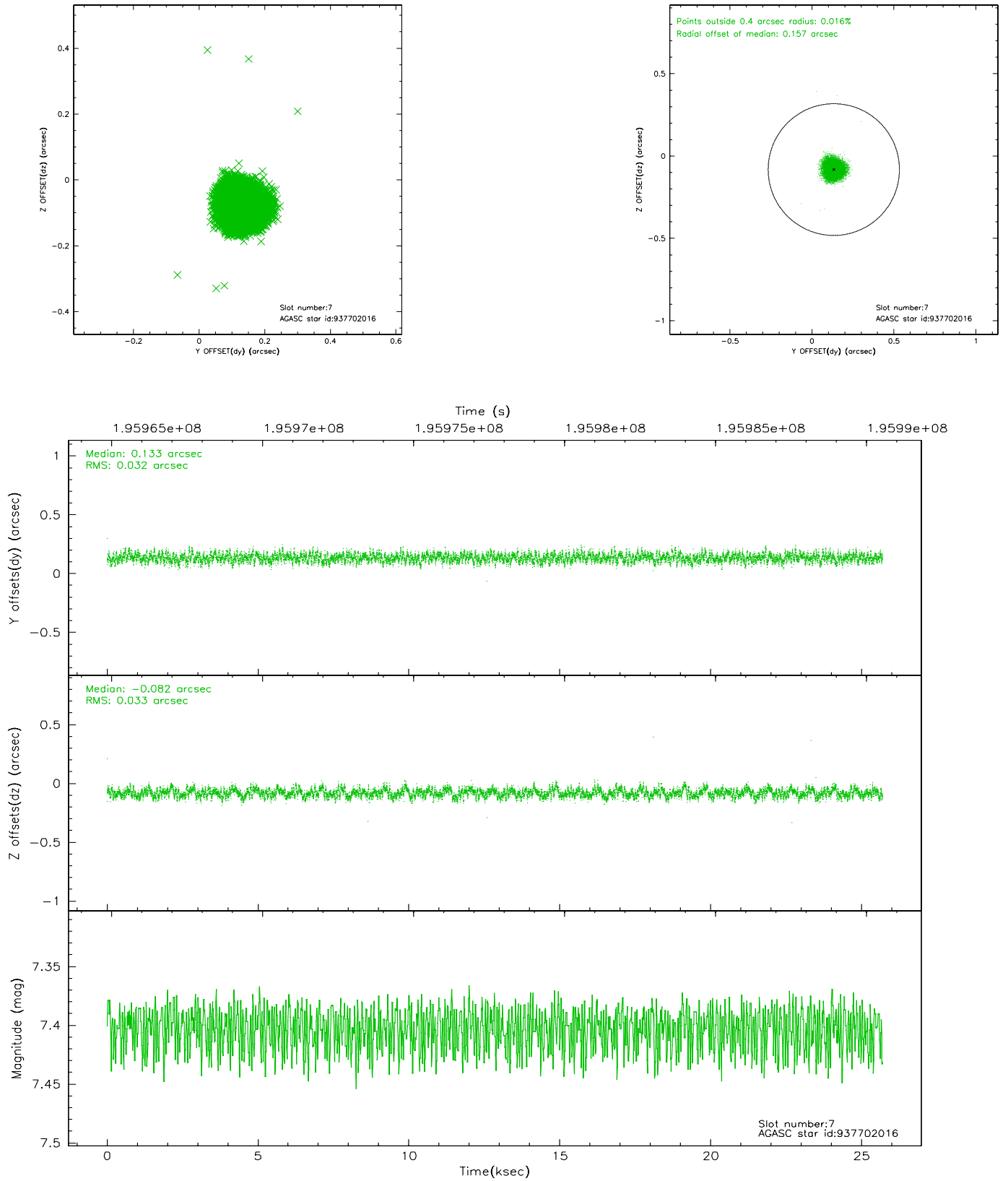
2.4.3 Slot 5



2.4.4 Slot 6

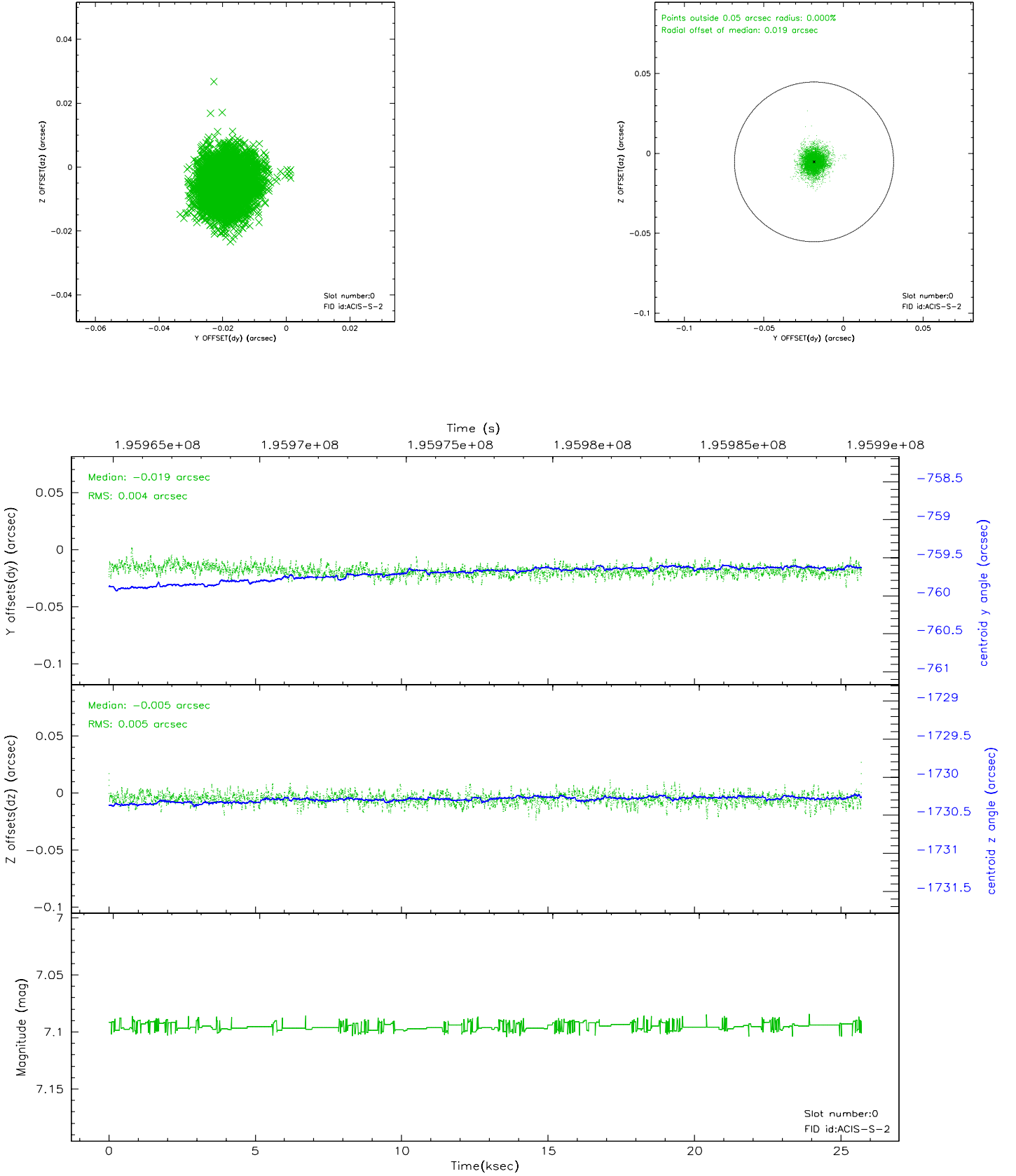


2.4.5 Slot 7

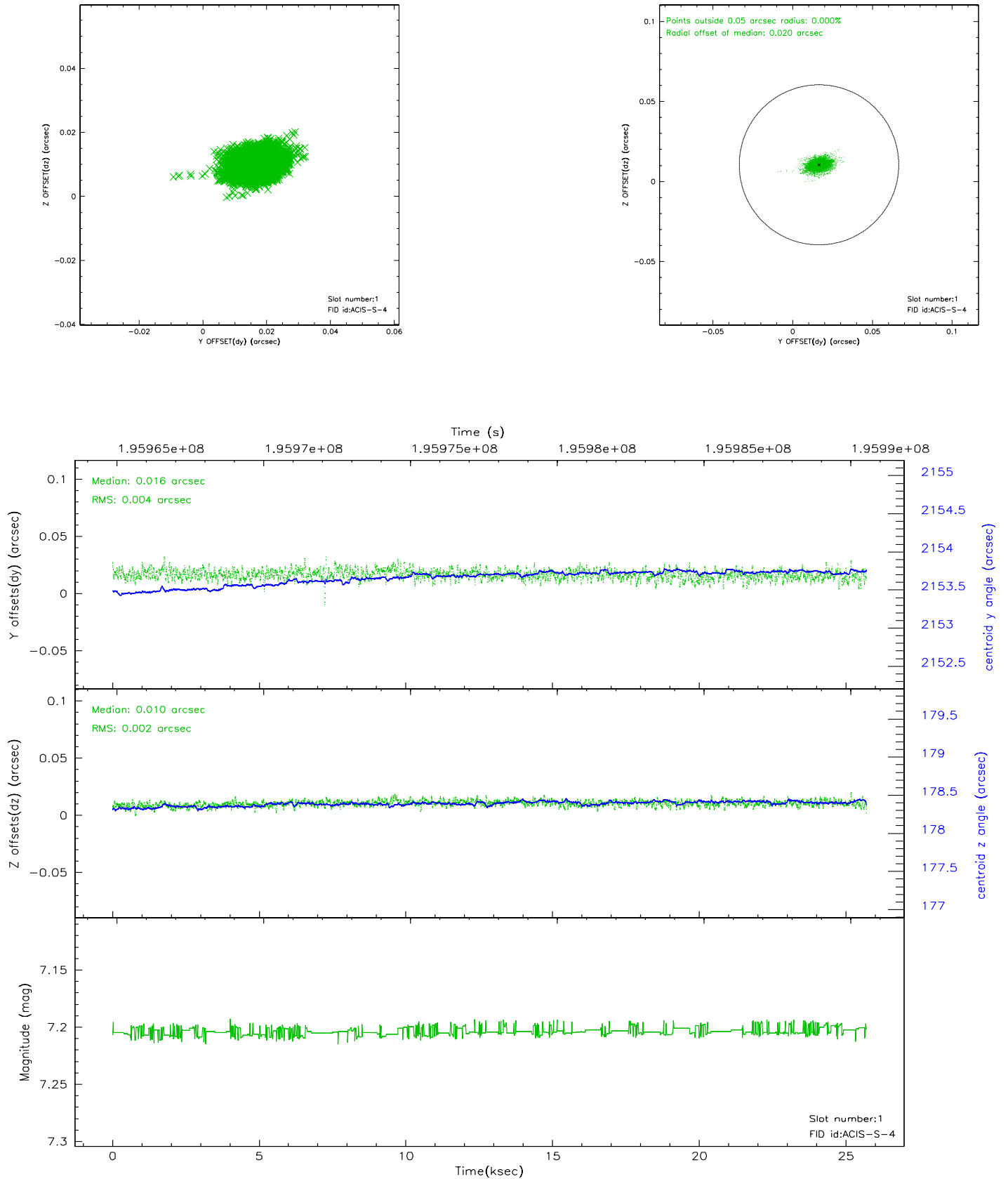


2.5 FID Slots

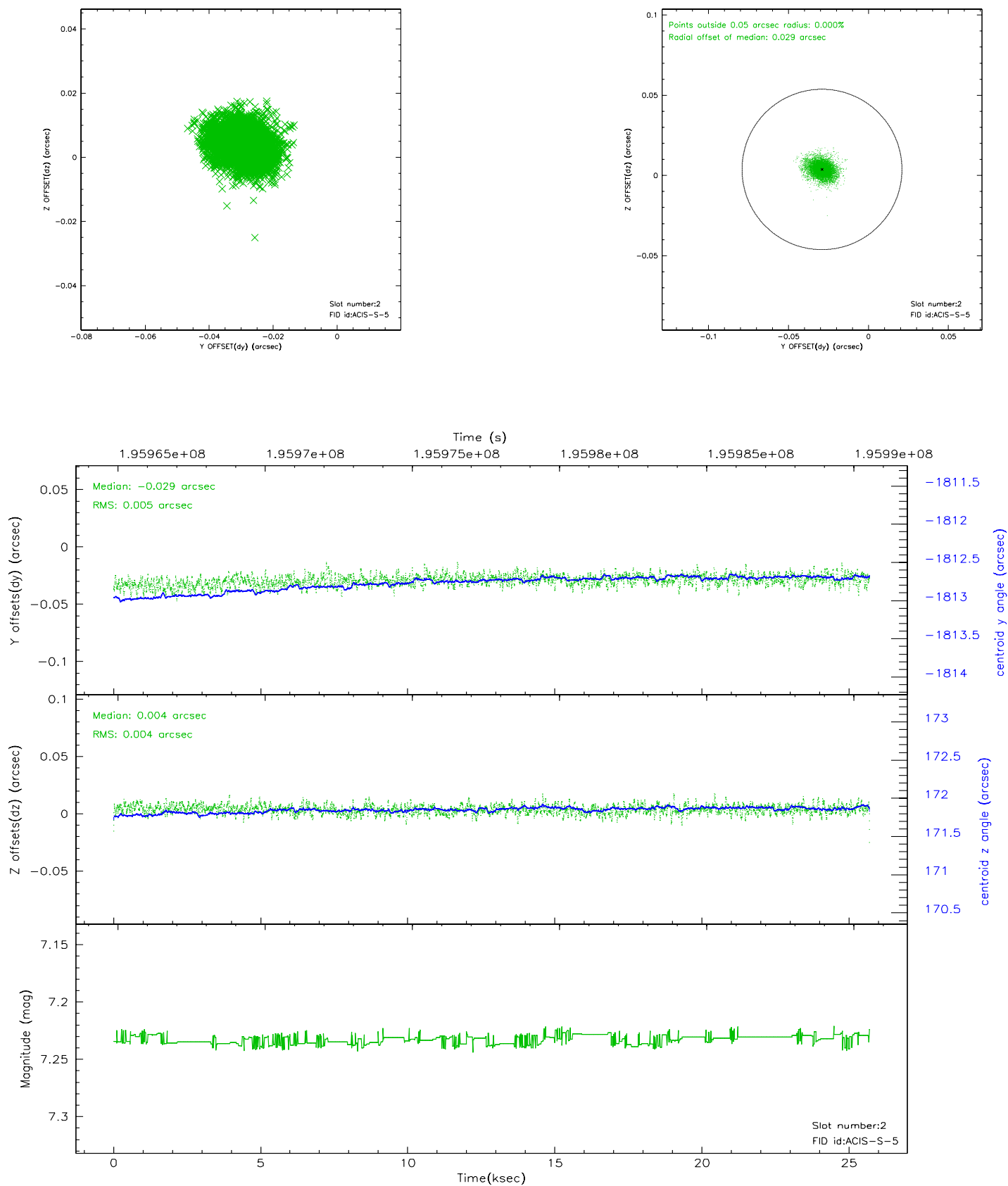
2.5.1 Slot 0



2.5.2 Slot 1



2.5.3 Slot 2



3 Point Sources

A Summary

A.1 Status

V&V Scientist	Jen Lauer
V&V Date (YYYY-MM-DD)	2006.05.30
V&V Edition	1
V&V Disposition and Status	OK
V&V Charge Time	25.7

A.2 Comments