

# V&V Reference Report

## L2 ASCDS Version : 7.6.7.2

Observation 4548 - L2 Version 001  
Chandra X-Ray Center

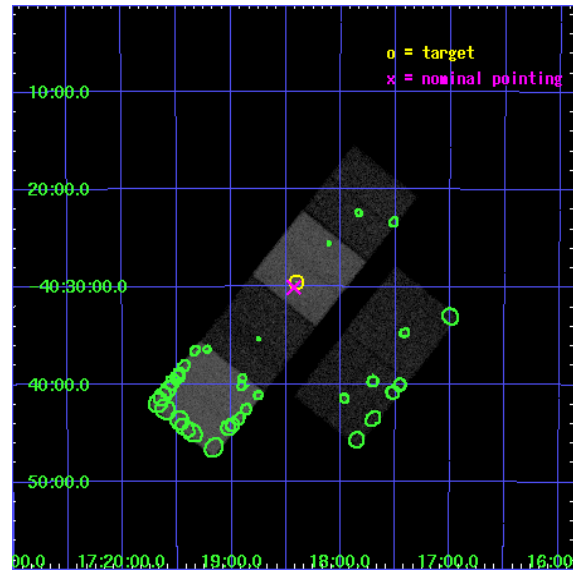
L2 Processing Date : Apr 29 2006

## Contents

<b>1</b>	<b>Front</b>	<b>2</b>
<b>2</b>	<b>OBI</b>	<b>3</b>
2.1	OBI . . . . .	3
2.1.1	Images . . . . .	3
2.1.2	Bias . . . . .	3
2.1.3	Parameters . . . . .	4
2.1.4	Events . . . . .	4
2.2	Compared Parameters . . . . .	5
2.3	Aspect . . . . .	6
2.4	Star Slots . . . . .	9
2.4.1	Slot 3 . . . . .	9
2.4.2	Slot 4 . . . . .	10
2.4.3	Slot 5 . . . . .	11
2.4.4	Slot 6 . . . . .	12
2.4.5	Slot 7 . . . . .	13
2.5	FID Slots . . . . .	14
2.5.1	Slot 0 . . . . .	14
2.5.2	Slot 1 . . . . .	15
2.5.3	Slot 2 . . . . .	16
<b>3</b>	<b>Point Sources</b>	<b>17</b>
<b>A</b>	<b>Summary</b>	<b>18</b>
A.1	Status . . . . .	18
A.2	Comments . . . . .	18

# 1 Front

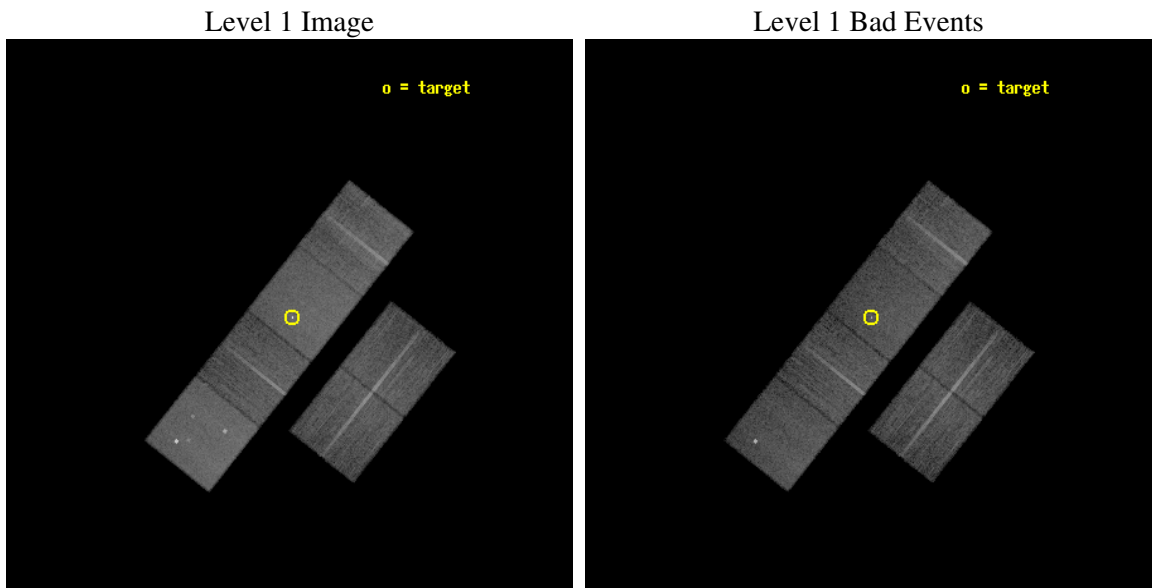
seq_num	400331
obs_id	4548
title	Low-luminosity X-ray binaries
observer	Dr Mariano Mendez
object	RXJ1718.4-4029
dtcycle	0
cycle	P
ra_targ	259.60125
dec_targ	-40.492778
ra_nom	259.60729212612
dec_nom	-40.501246354599
roll_nom	308.50670561919
revision	2
ontime	14956.799944282
livetime	14767.407937483
ontime2	14956.799944282
ontime3	14956.799944282
ontime5	14956.799944282
ontime6	14956.799944282
ontime7	14956.799944282
ontime8	14956.799944282
l2events	177691



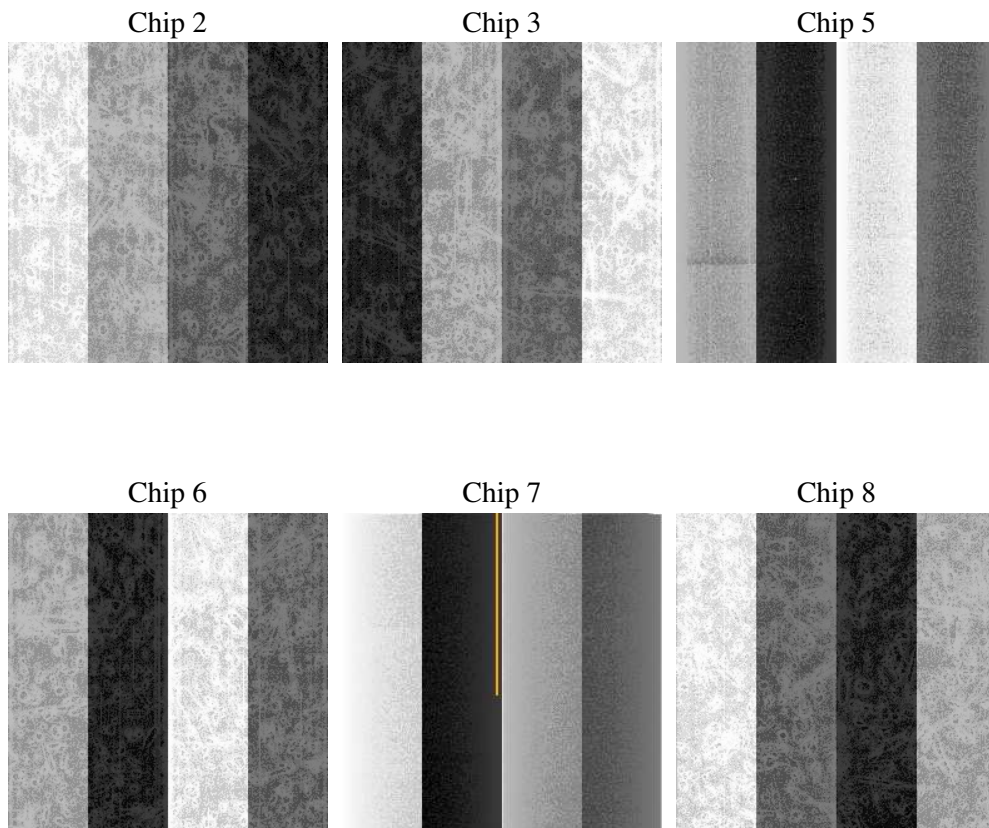
## 2 OBI

### 2.1 OBI

#### 2.1.1 Images



#### 2.1.2 Bias



### 2.1.3 Parameters

obi_num	1
ascdsver	7.6.7.2
caldsver	3.2.1
date	2006-04-29T07:12:22
revision	2

sched_exp_time	15000.000000
ontime	14963.730263501
ontime2	14963.730263501
ontime3	14963.730263501
ontime5	14963.730283409
ontime6	14963.730263501
ontime7	14963.730263501
ontime8	14963.730263501
l1events	802673

### 2.1.4 Events

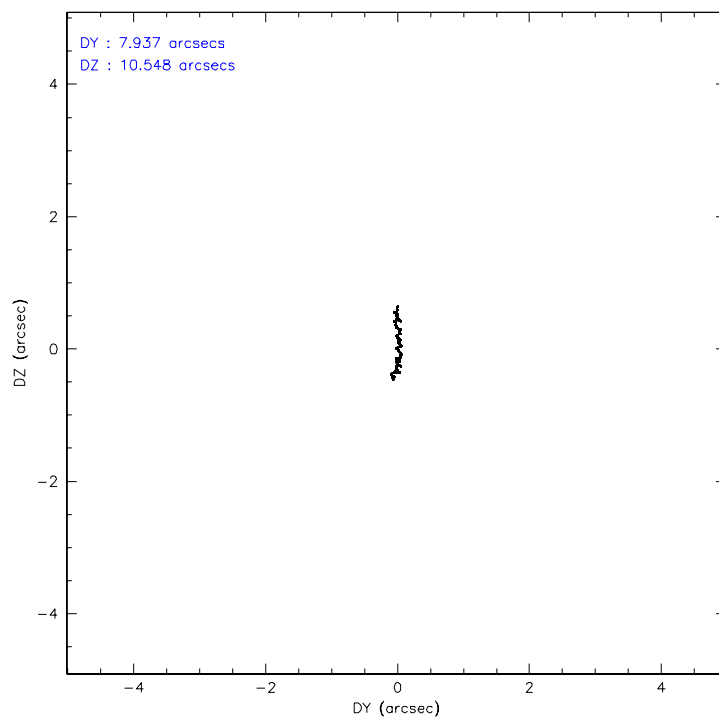
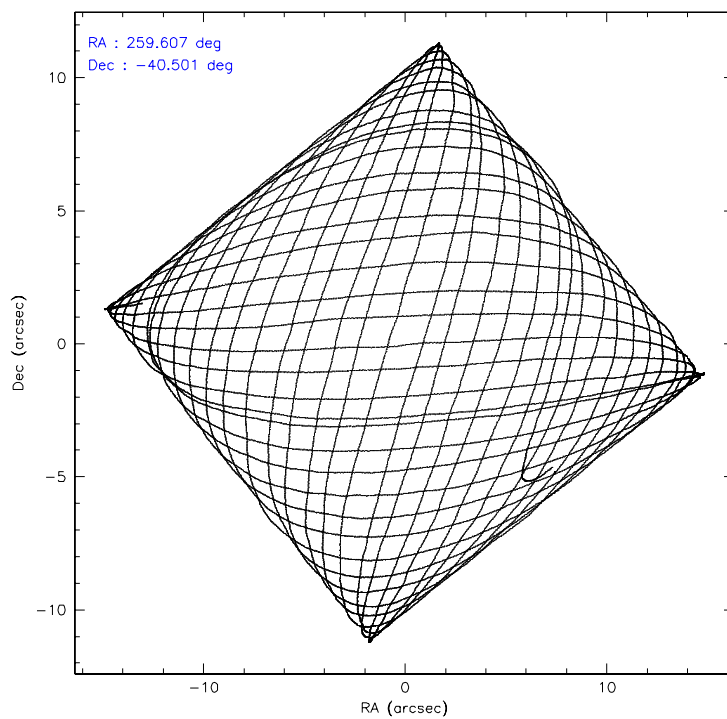
	ccd 2	ccd 3	ccd 5	ccd 6	ccd 7	ccd 8
level 1 events	111456	111124	169243	114176	155158	141516
rejected events	97928	97704	94826	100213	93852	110931
rejected %	87%	87%	56%	87%	60%	78%

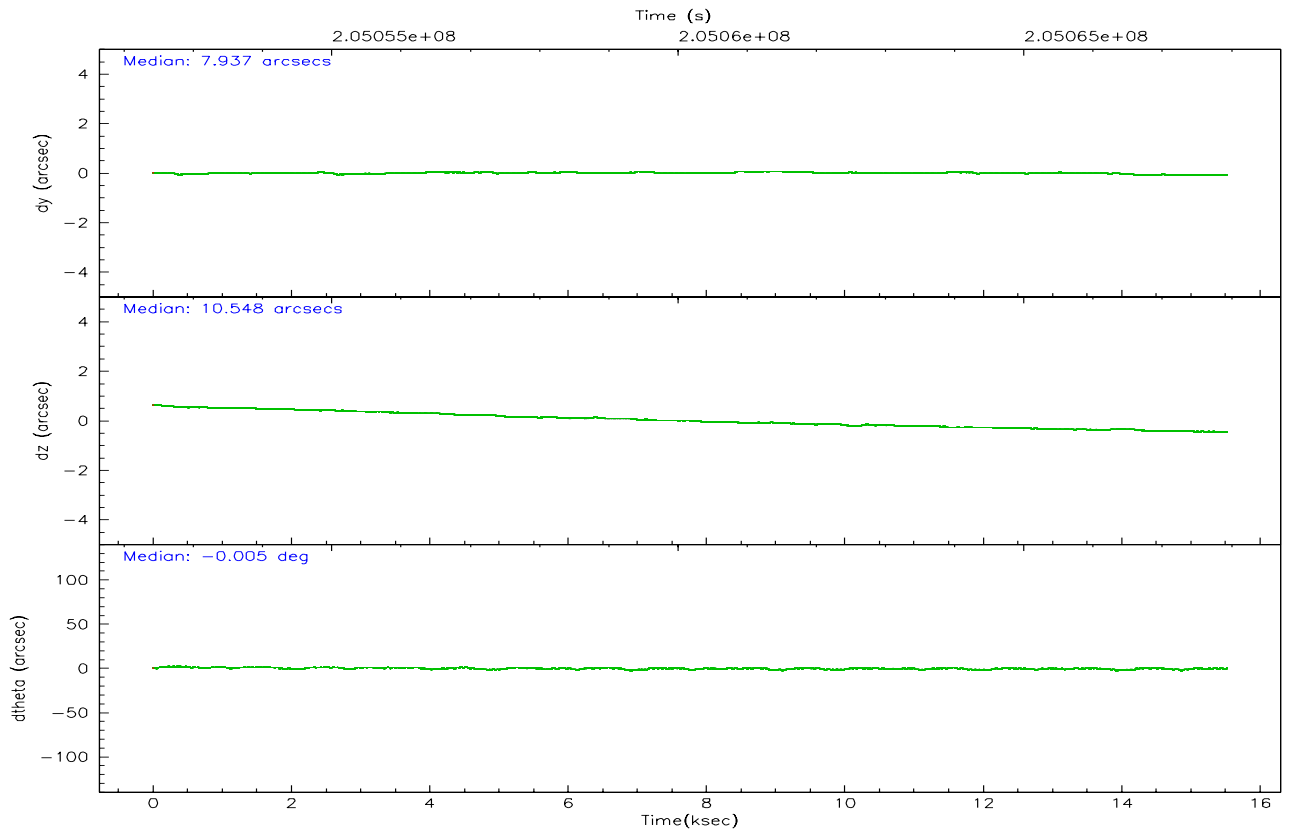
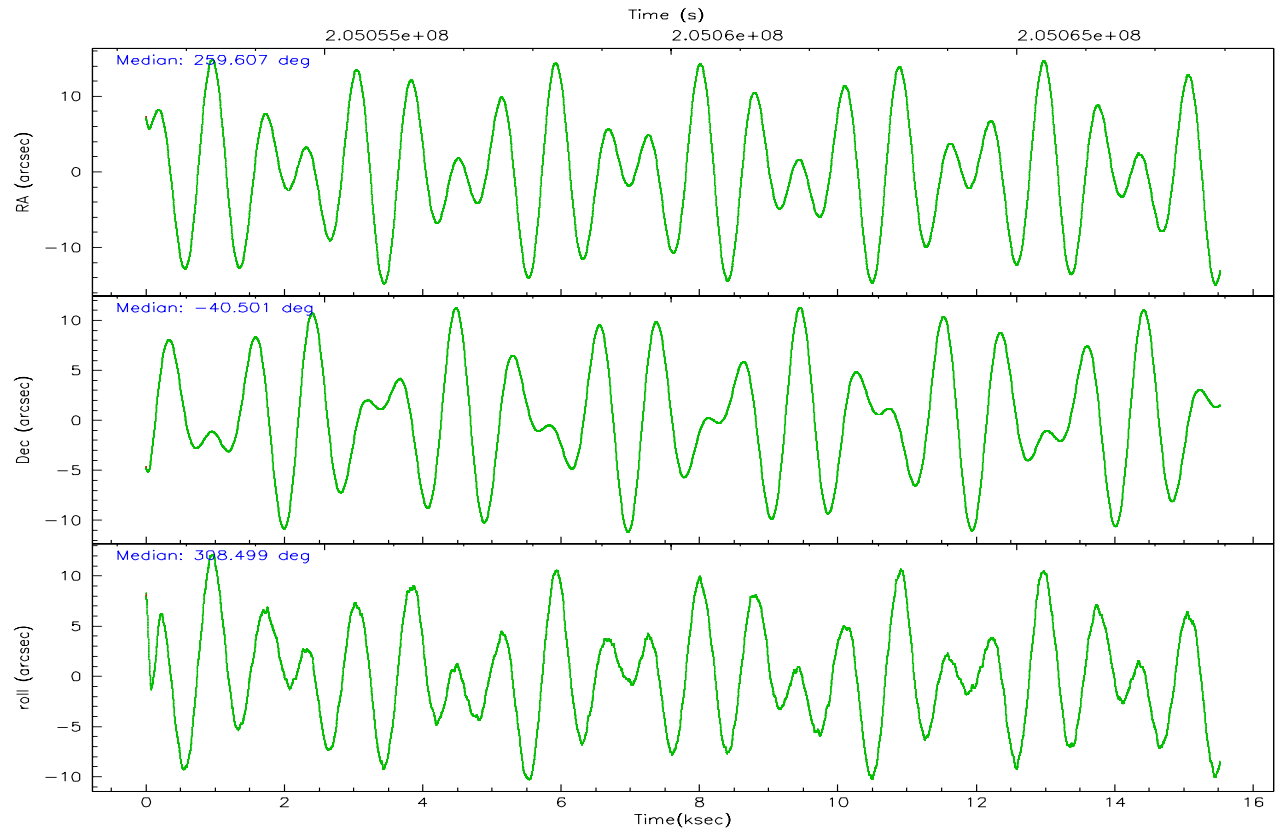
	ccd 2	ccd 3	ccd 5	ccd 6	ccd 7	ccd 8
grade 0 events	6038	6090	5668	5781	4044	10092
	5%	5%	3%	5%	2%	7%
grade 1 events	83	72	129	64	131	100
	0%	0%	0%	0%	0%	0%
grade 2 events	2774	2406	24096	2882	15436	6532
	2%	2%	14%	2%	9%	4%
grade 3 events	1266	1309	1619	1280	3332	3229
	1%	1%	0%	1%	2%	2%
grade 4 events	1303	1369	1577	1291	3183	2986
	1%	1%	0%	1%	2%	2%
grade 5 events	4411	4803	8045	5110	10163	6699
	3%	4%	4%	4%	6%	4%
grade 6 events	2152	2248	41492	2734	35334	7755
	1%	2%	24%	2%	22%	5%
grade 7 events	93429	92827	86617	95034	83535	104123
	83%	83%	51%	83%	53%	73%

## 2.2 Compared Parameters

Parameter	Planned	Actual	Parameter	Planned	Actual
Instrument	ACIS	ACIS	Obspar format version number	6	6
Detector	ACIS-235678	ACIS-235678	Obspar file type	PREDICTED	ACTUAL
Grating	NONE	NONE	Obspar update status	NONE	UPDATED
Data mode	FAINT	FAINT	On-chip summing requested	N	N
Observation mode	POINTING	POINTING	Subarray requested	NONE	NONE
Pointing RA	259.573804	259.6072921261155	Alternating exposures requested	N	N
Pointing Dec	-40.491639	-40.50124635459937	Primary exposure time	0.000000	3.2
Pointing Roll	308.328323	308.5067056191858			
SIM focus pos (mm)	-0.684267	-0.6828225247311905			
SIM defocus (mm)	0	0.001444936568705701			
SIM translation stage pos (mm)	-190.132523	-190.1400660498719			
SIM translation stage offset (mm)	0	0.00754346686406393			
Observation start time	205052943.184000	205051759.57753			
Observation start date	2004-07-01T07:07:59	2004-07-01T06:49:19			
Observation end time	205067943.184000	205068980.0908			
Observation end date	2004-07-01T11:17:59	2004-07-01T11:36:20			
Read mode	TIMED	TIMED			

## 2.3 Aspect



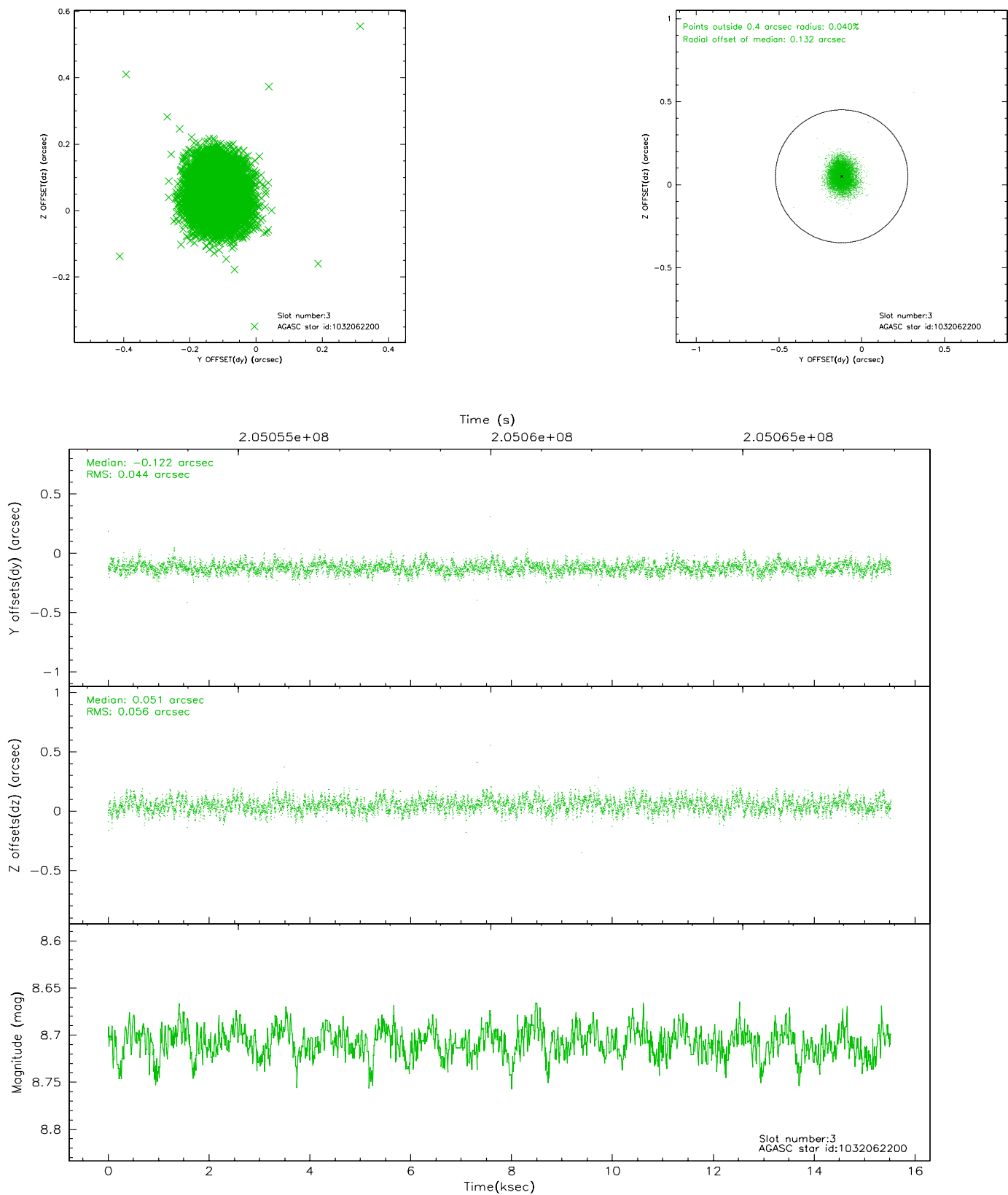


### Slot Statistics

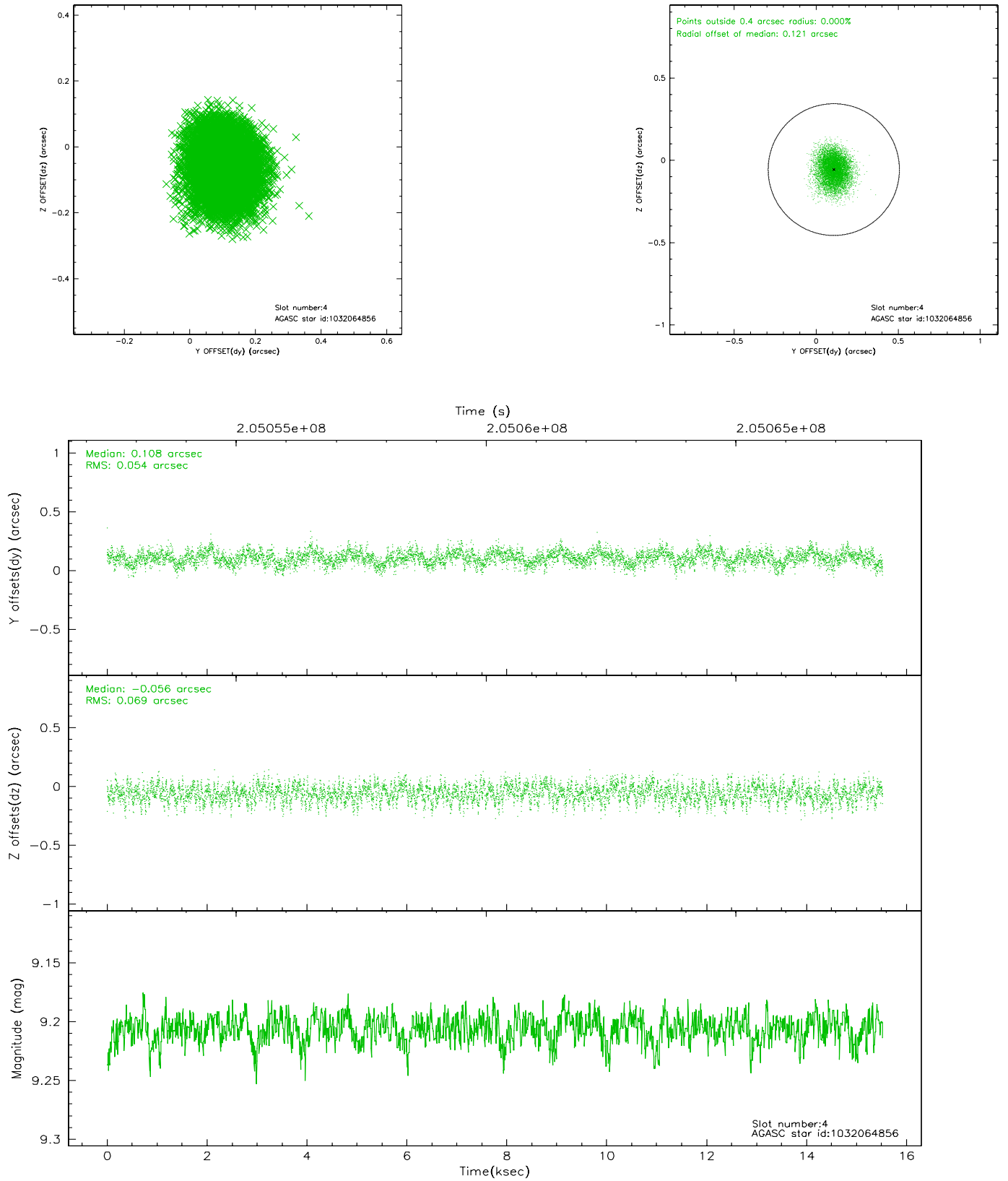
slot	status	id	mag	n_pts	med_dy	med_dz	dr1	dr2	ra	dec	mean_y	mean_z
0	FID	ACIS-S-2	7.10	3788	-0.033	0.017	0.015	0.023	0.000000	0.000000	-760.70	-1731.84
1	FID	ACIS-S-4	7.20	3787	0.058	0.011	0.010	0.018	0.000000	0.000000	2152.49	176.41
2	FID	ACIS-S-5	7.23	3788	-0.059	-0.018	0.016	0.025	0.000000	0.000000	-1813.25	170.28
3	GUIDE	1032062200	8.71	7575	-0.122	0.051	0.075	0.122	259.162367	-40.866249	365.74	-1716.49
4	GUIDE	1032064856	9.21	7570	0.108	-0.056	0.093	0.149	258.958011	-40.551517	-870.26	-1459.01
5	GUIDE	1032069472	8.06	7574	-0.059	0.023	0.051	0.084	259.731127	-39.838834	-1573.71	1798.13
6	GUIDE	1033770424	8.24	7574	-0.051	-0.020	0.062	0.103	260.243465	-40.286835	567.37	1895.93
7	GUIDE	1033777192	9.18	7567	0.128	0.002	0.075	0.122	260.370115	-40.603373	1673.39	1452.42

## 2.4 Star Slots

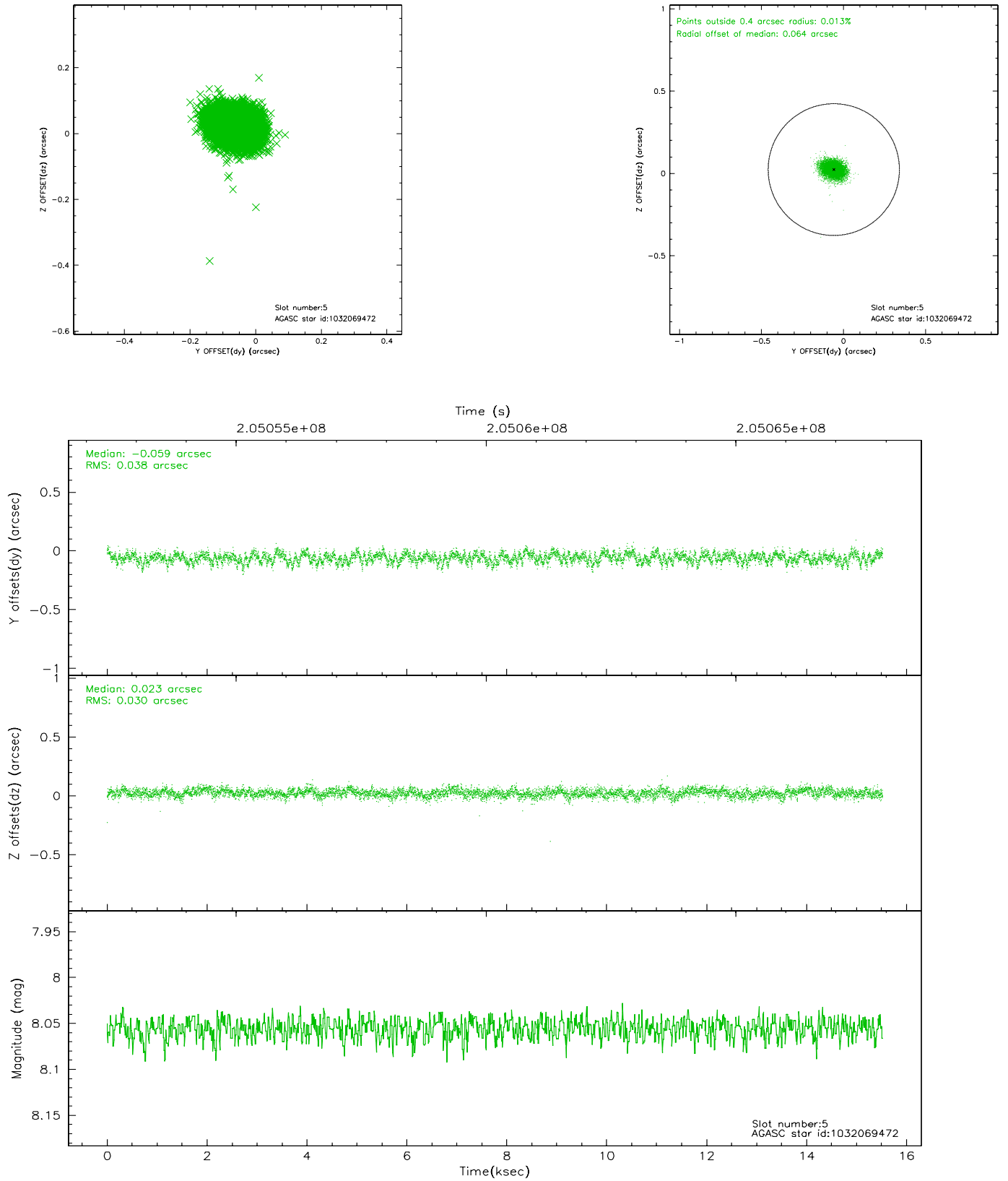
### 2.4.1 Slot 3



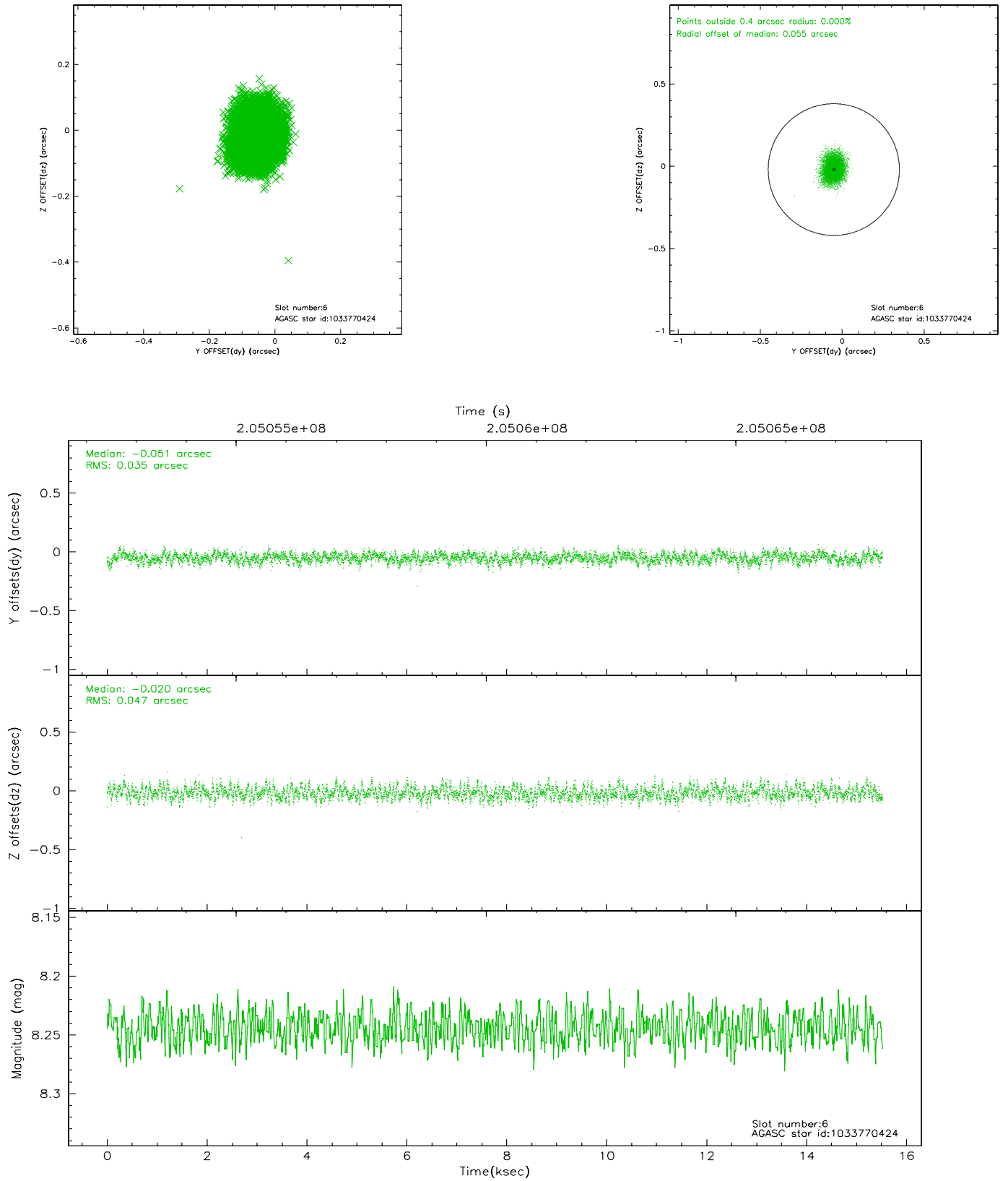
## 2.4.2 Slot 4



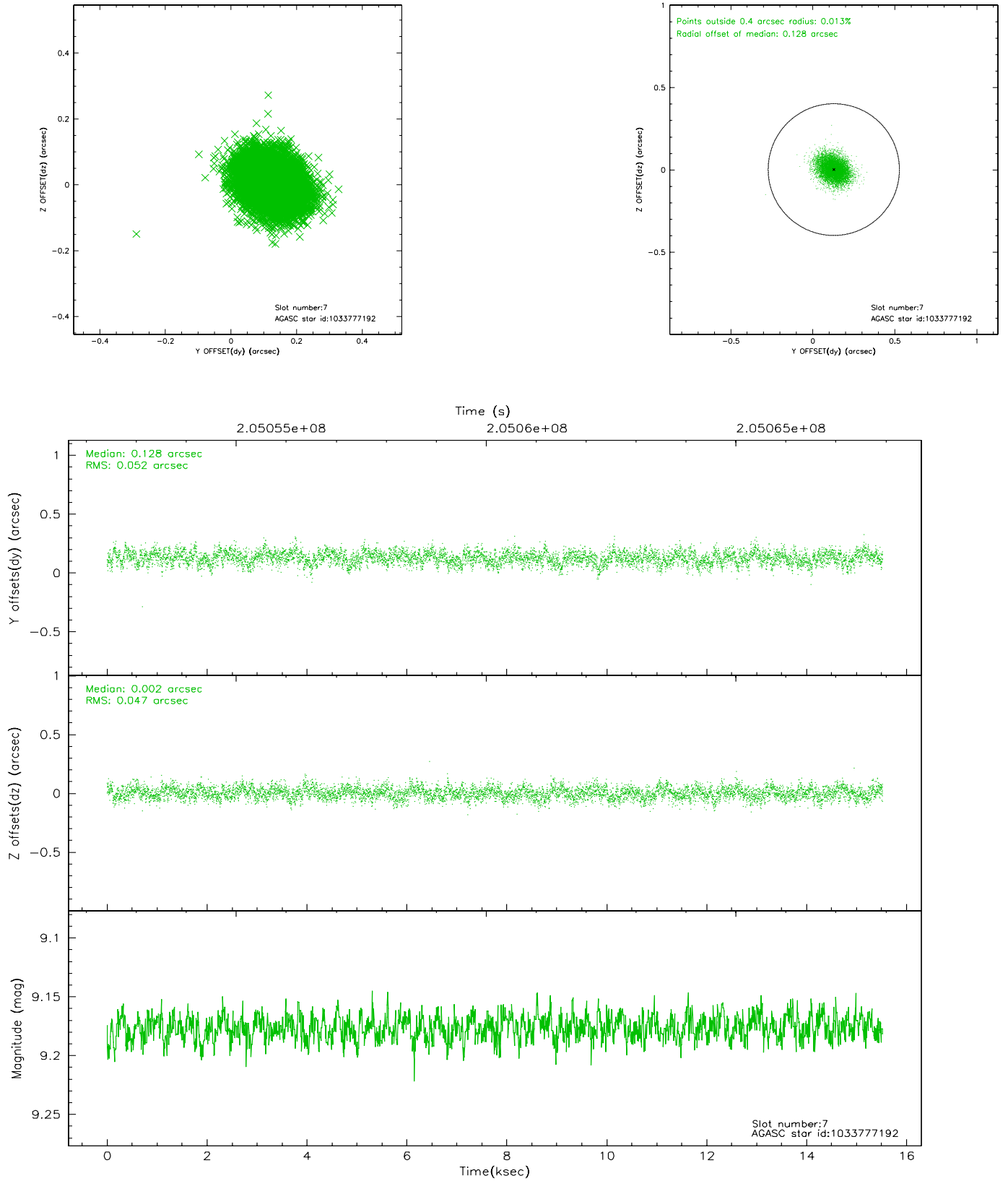
### 2.4.3 Slot 5



## 2.4.4 Slot 6

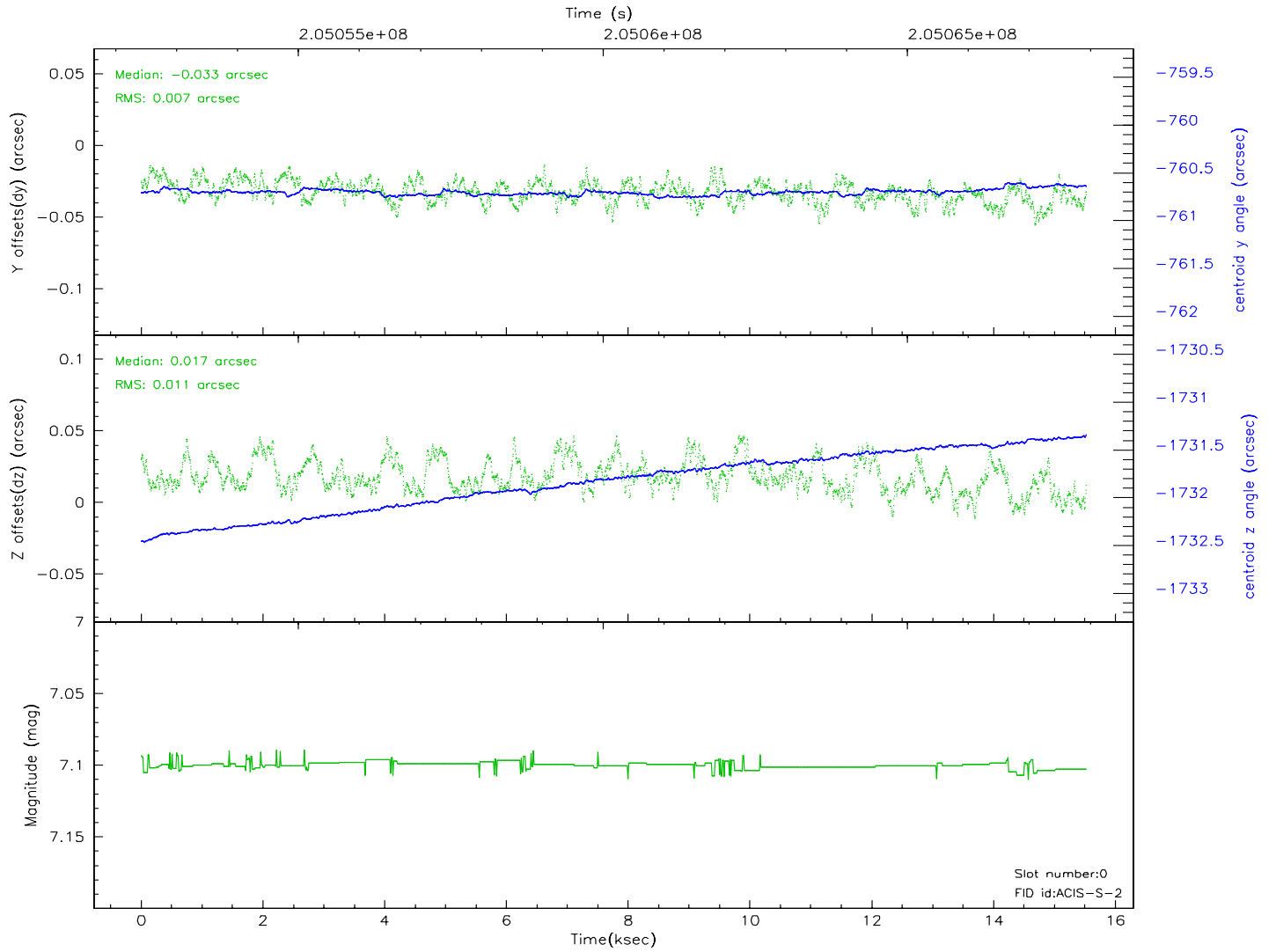
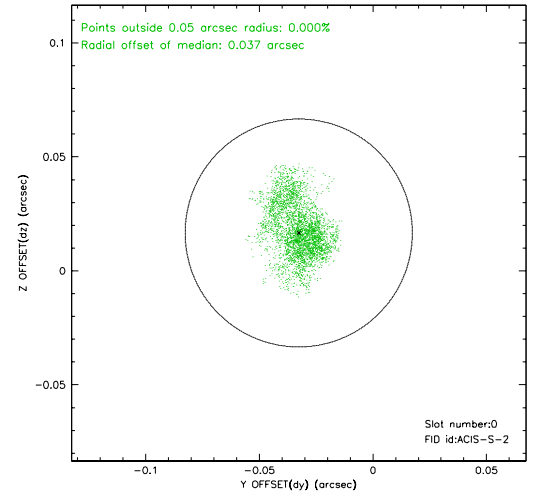
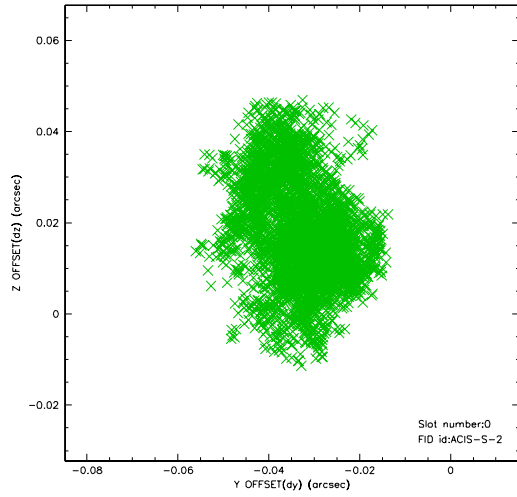


## 2.4.5 Slot 7

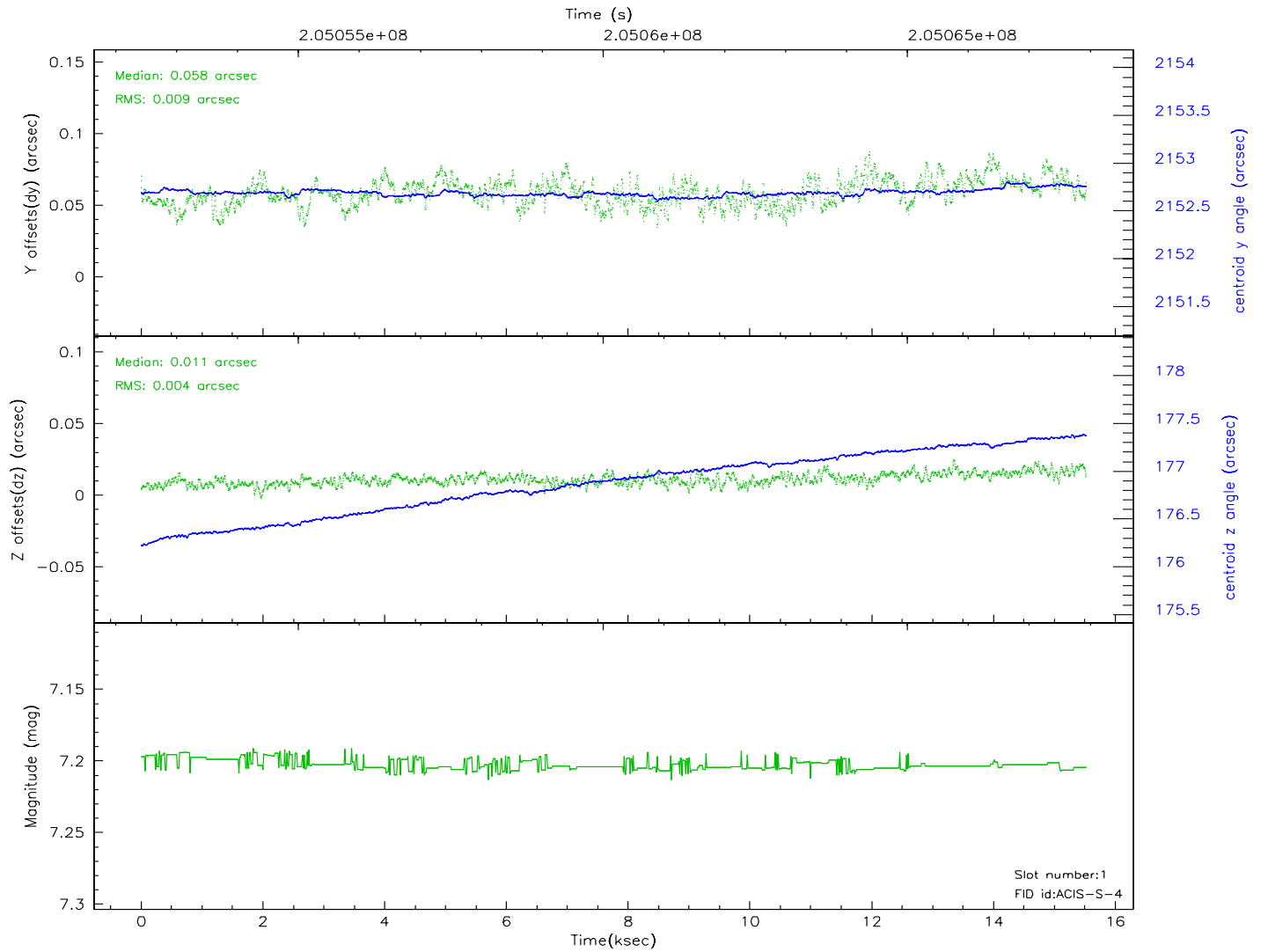
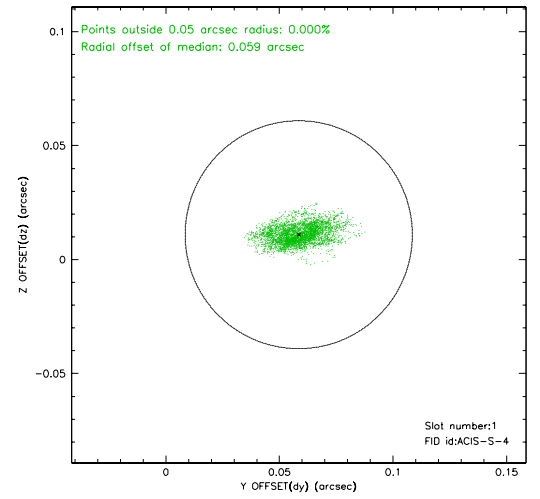
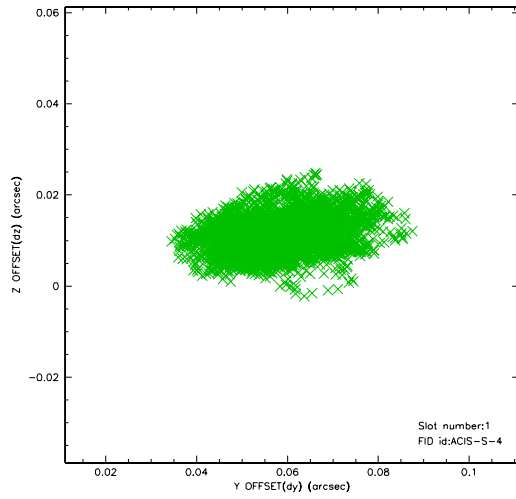


## 2.5 FID Slots

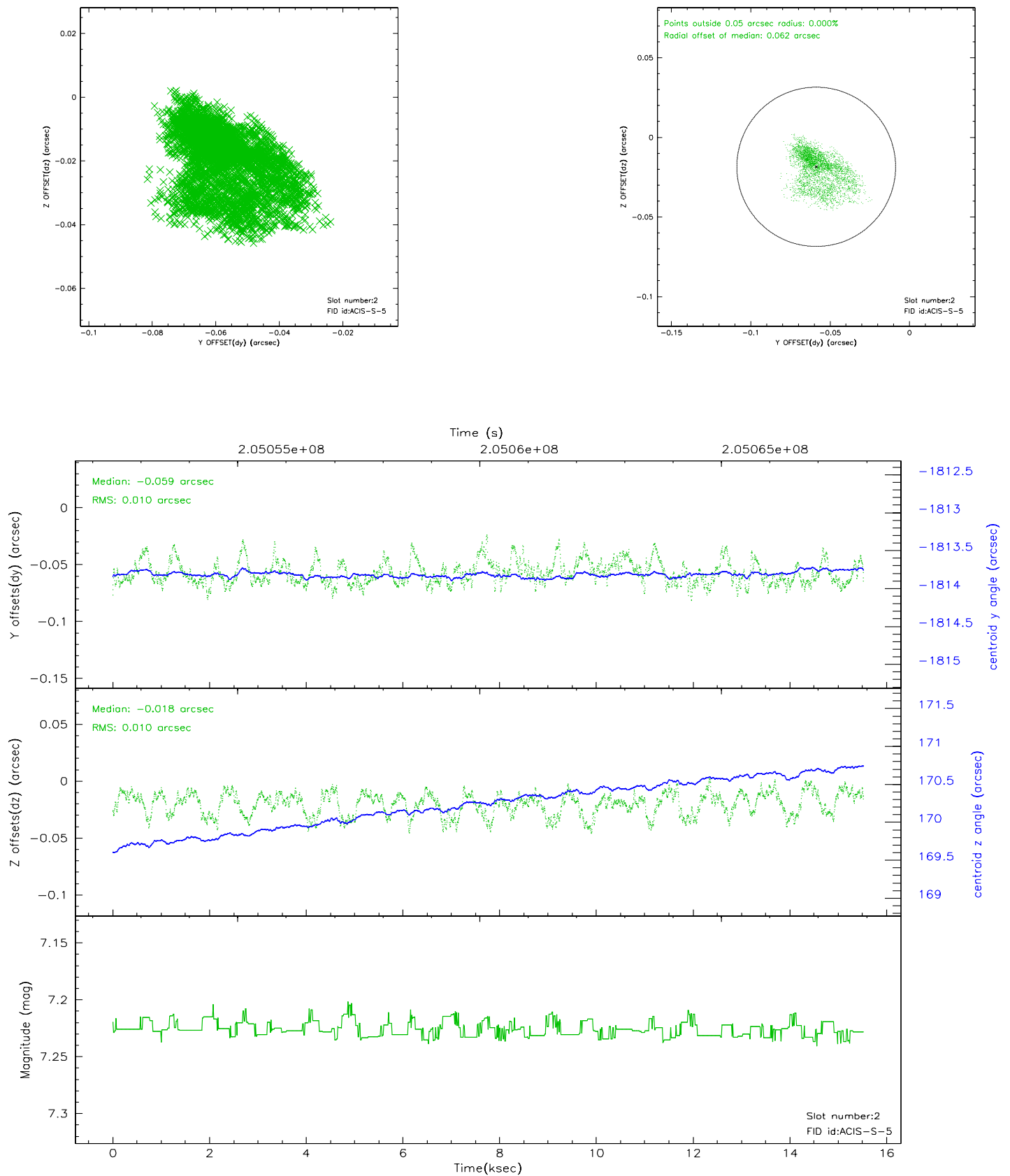
### 2.5.1 Slot 0



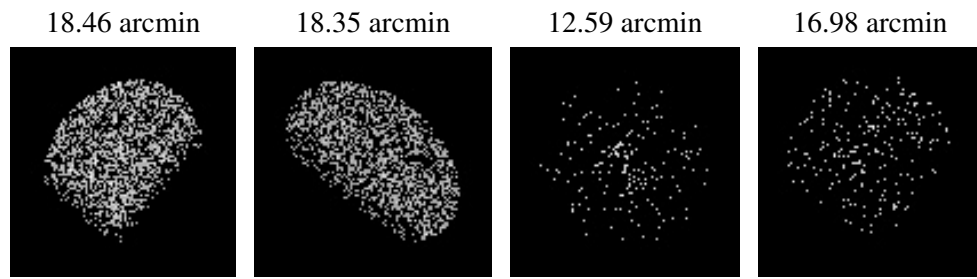
## 2.5.2 Slot 1



### 2.5.3 Slot 2



### 3 Point Sources



## A Summary

### A.1 Status

V&V Scientist	Jen Lauer
V&V Date (YYYY-MM-DD)	2006.04.30
V&V Edition	1
V&V Disposition and Status	OK
V&V Charge Time	14.956

### A.2 Comments