

# V&V Reference Report

## L2 ASCDS Version : 8.5

Observation 4451 - L2 Version 3  
Chandra X-Ray Center

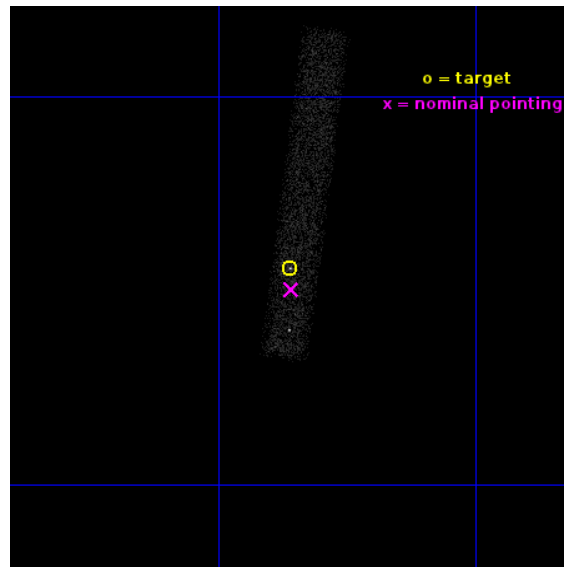
L2 Processing Date : Dec 6 2012

## Contents

<b>1</b>	<b>Front</b>	<b>2</b>
<b>2</b>	<b>OBI</b>	<b>3</b>
2.1	OBI . . . . .	3
2.1.1	Images . . . . .	3
2.1.2	Bias . . . . .	3
2.1.3	Parameters . . . . .	4
2.1.4	Events . . . . .	4
2.2	Compared Parameters . . . . .	5
2.3	Aspect . . . . .	6
2.4	Star Slots . . . . .	9
2.4.1	Slot 3 . . . . .	9
2.4.2	Slot 4 . . . . .	10
2.4.3	Slot 5 . . . . .	11
2.4.4	Slot 6 . . . . .	12
2.4.5	Slot 7 . . . . .	13
2.5	FID Slots . . . . .	14
2.5.1	Slot 0 . . . . .	14
2.5.2	Slot 1 . . . . .	15
2.5.3	Slot 2 . . . . .	16
<b>A</b>	<b>Summary</b>	<b>17</b>
A.1	Status . . . . .	17
A.2	Comments . . . . .	17

# 1 Front

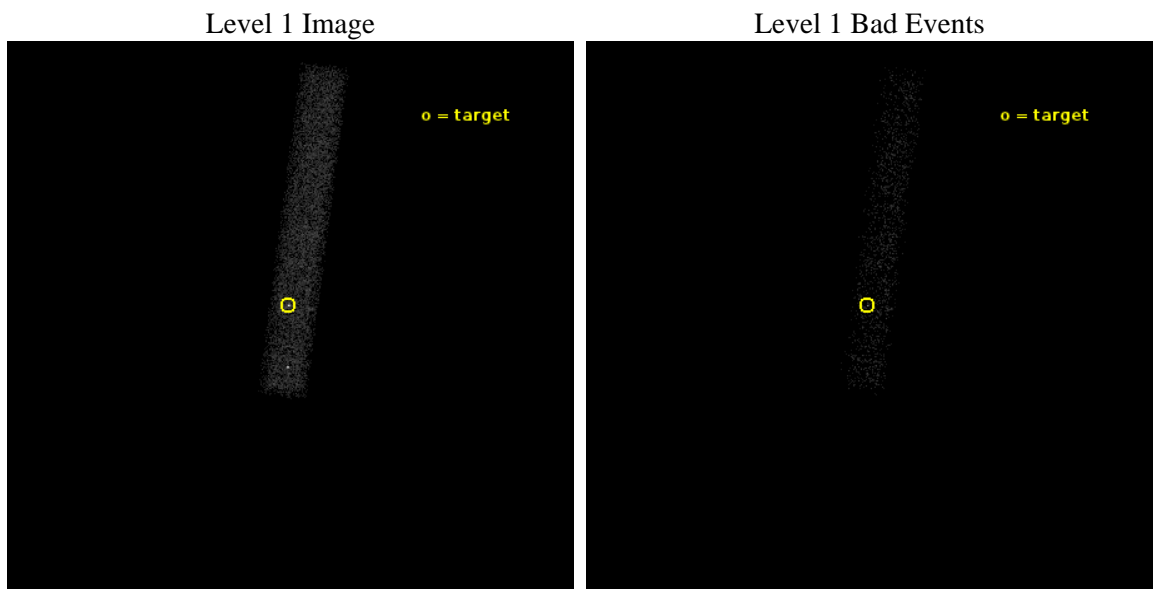
seq_num	400328	Sequence number
obs_id	4451	Observation id
title	Following a black hole candidate soft X-ray transient returning to quiescence	Proposal title
observer	dr Peter Jonker	Principal investigator
object	V 4641 Sgr	Source name
dtcycle	0	&#160
cycle	P	events from which exps? Prim/Second/Both
ra_targ	274.84	Observer's specified target RA [deg]
dec_targ	-25.407167	Observer's specified target Dec [deg]
ra_nom	274.83944680218	Nominal RA [deg]
dec_nom	-25.416366477646	Nominal Dec [deg]
roll_nom	277.53814171046	Nominal Roll [deg]
revision	3	Processing version of data
ontime	10154.153911263	Sum of GTIs [s]
livetime	9209.2816173252	Livetime [s]
ontime7	10154.153911263	Sum of GTIs [s]
l2events	7407	Number of level 2 events



## 2 OBI

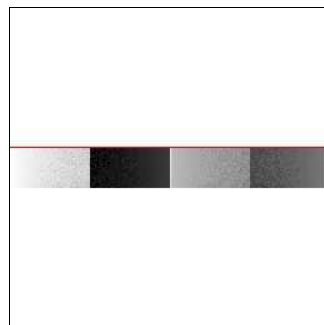
### 2.1 OBI

#### 2.1.1 Images



#### 2.1.2 Bias

Chip 7



### 2.1.3 Parameters

obi_num	0	Obi number	sched_exp_time	10000.000000	[s] Scheduled observation exposure time
ascdsver	8.5	Processing system revision	ontime	10154.153911263	Sum of GTIs [s]
caldsver	4.5.4	&#160	ontime7	10154.153911263	Sum of GTIs [s]
date	2012-12-06T09:16:33	Date and time of file creation	l1events	16459	Number of level 1 events
revision	3	Processing version of data			

### 2.1.4 Events

	<b>ccd 7</b>
level 1 events	16459
rejected events	8672
rejected %	52%

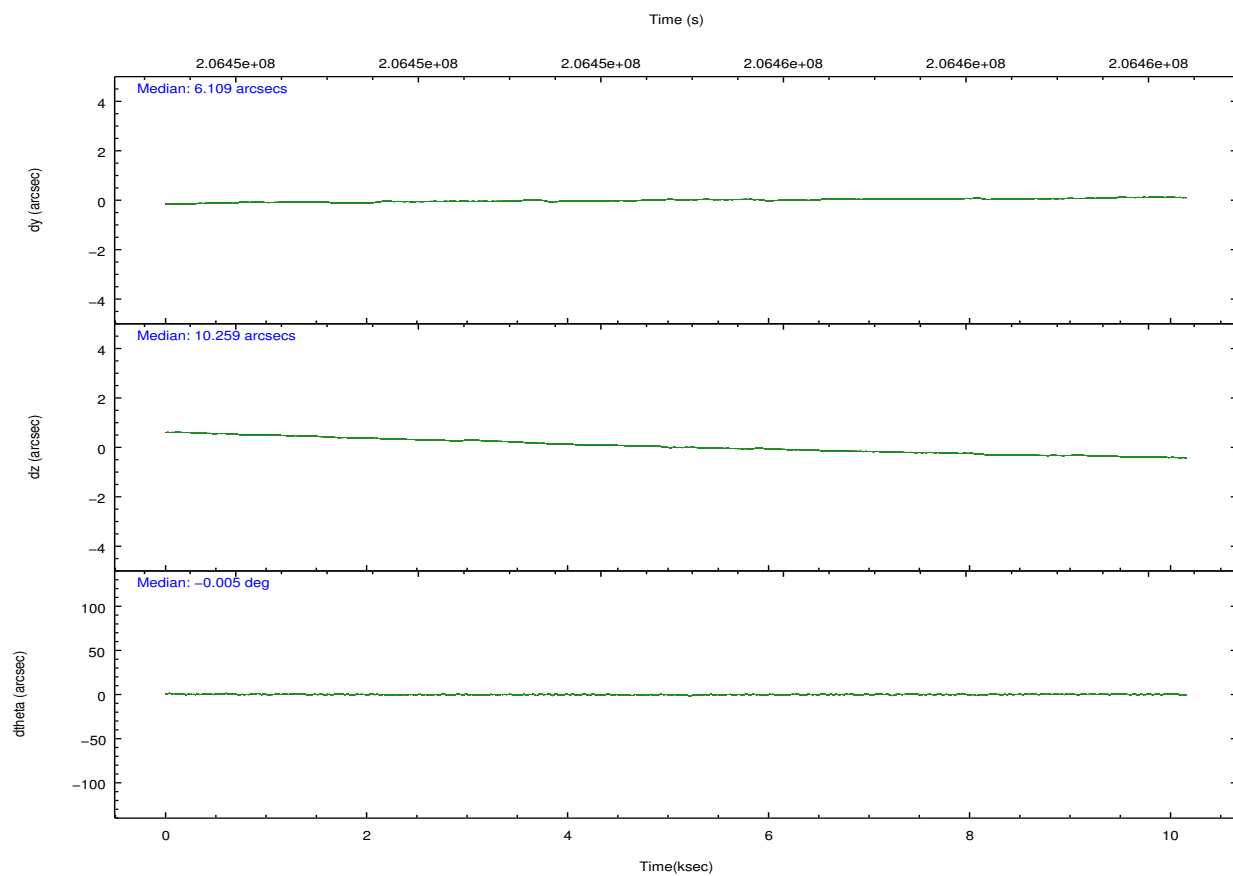
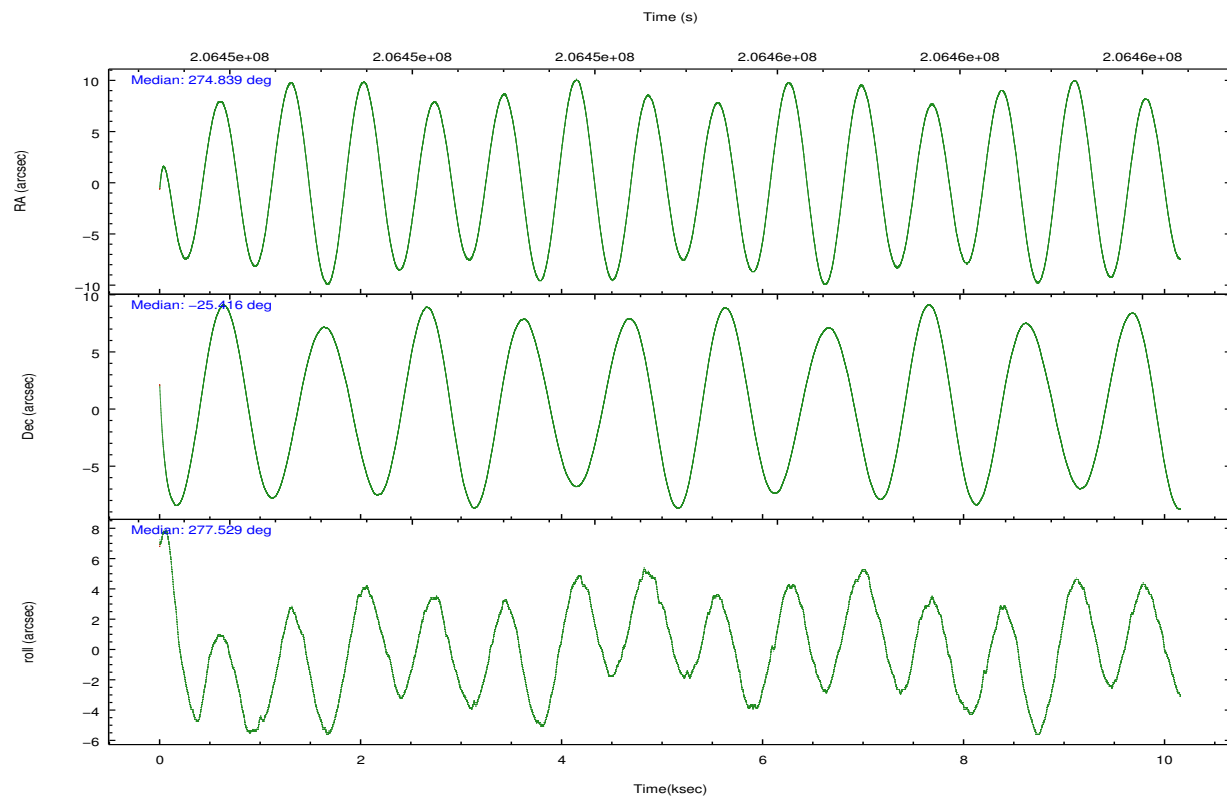
	<b>ccd 7</b>
grade 0 events	1124
	6%
grade 1 events	23
	0%
grade 2 events	1822
	11%
grade 3 events	1076
	6%
grade 4 events	988
	6%
grade 5 events	1431
	8%
grade 6 events	3459
	21%
grade 7 events	6536
	39%



## 2.2 Compared Parameters

Parameter	Planned	Actual	Parameter	Planned	Actual
Instrument	ACIS	ACIS	Obspar format version number	7	7
Detector	ACIS-7	ACIS-7	Obspar file type	PREDICTED	ACTUAL
Grating	NONE	NONE	Obspar update status	NONE	UPDATED
Data mode	FAINT	FAINT	Number of optional ACIS chips dropped	0	0
Observation mode	POINTING	POINTING	On-chip summing requested	N	N
[deg] Pointing RA	274.820759	274.8394468021831	Subarray requested	CUSTOM	1/8
[deg] Pointing Dec	-25.394966	-25.41636647764626	Subarray start row	449	449
[deg] Pointing Roll	277.373491	277.5381417104632	Subarray row count	128	128
[mm] SIM focus pos	-0.684267	-0.6828225247311905	Alternating exposures requested	N	N
[mm] SIM defocus	0	0.001444936568705701	[s] Primary exposure time	0.000000	0.4
[mm] SIM translation stage pos	-190.132523	-190.1425803651734			
[mm] SIM translation stage offset	0	0.01005778216563158			
[s] Observation start time (MET)	206449902.184000	206448698.31451			
Observation start date	2004-07-17T11:10:38	2004-07-17T10:51:38			
[s] Observation end time (MET)	206459902.184000	206460532.96503			
Observation end date	2004-07-17T13:57:18	2004-07-17T14:08:52			
Read mode	TIMED	TIMED			

## 2.3 Aspect

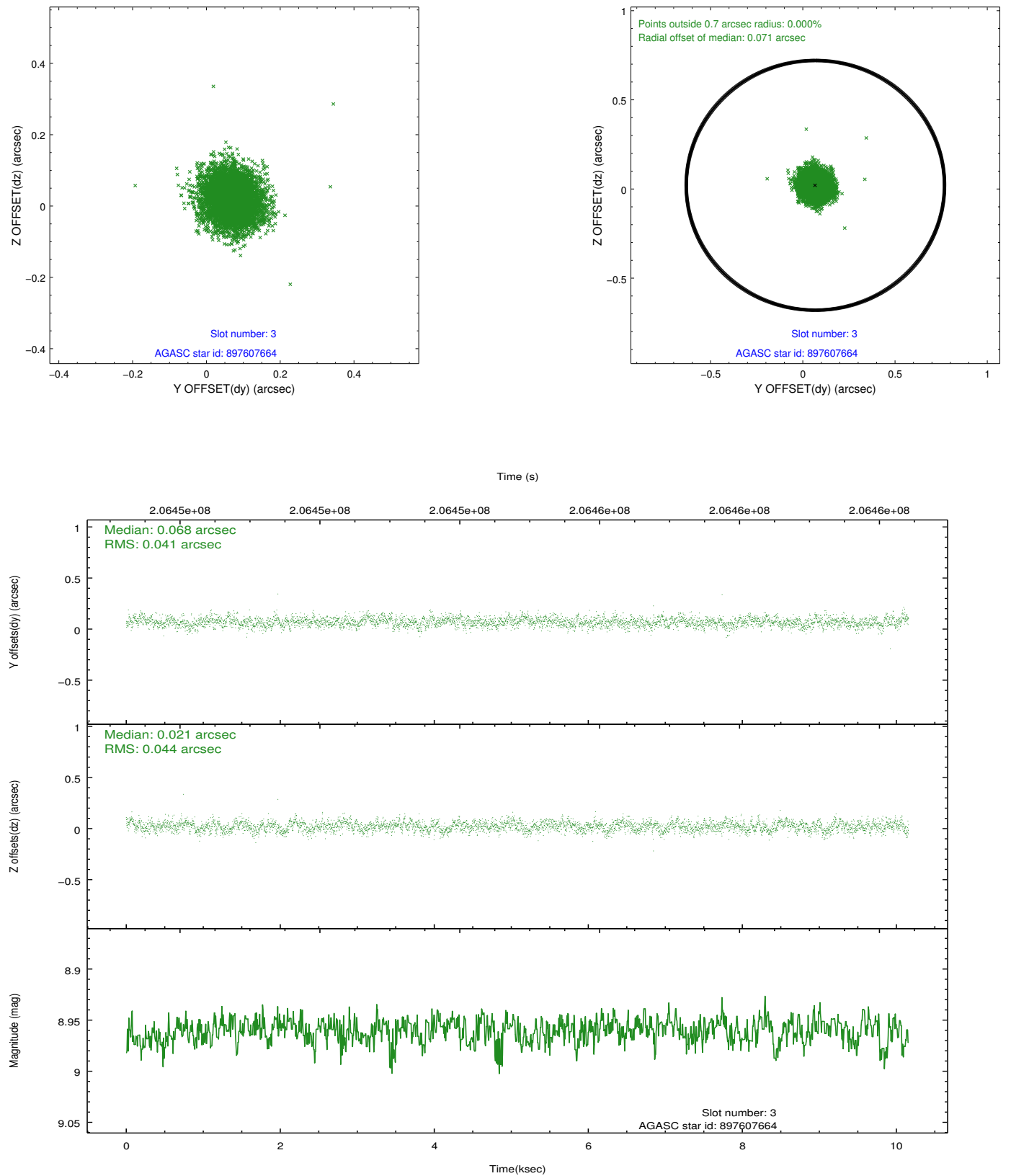


### Slot Statistics

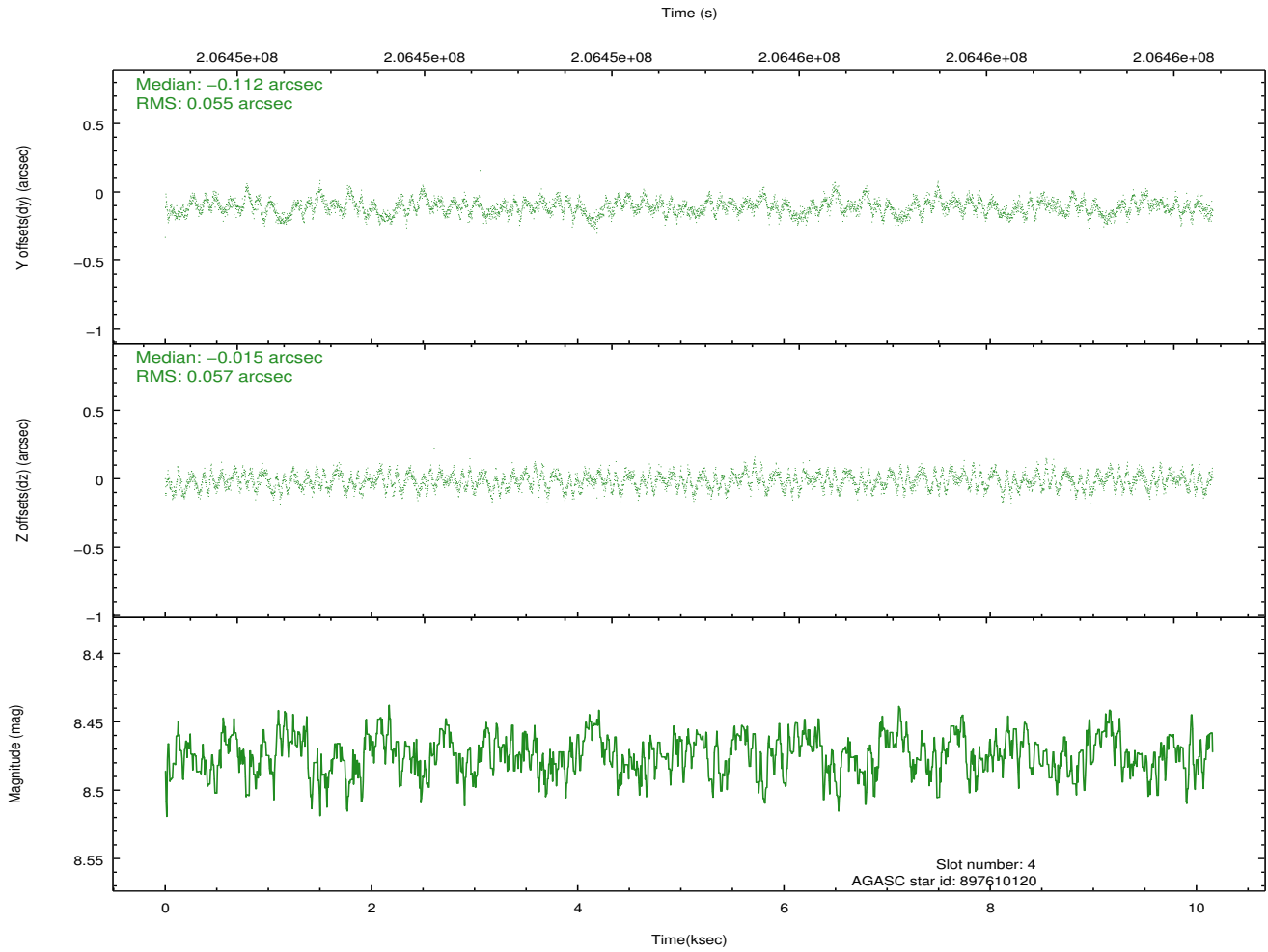
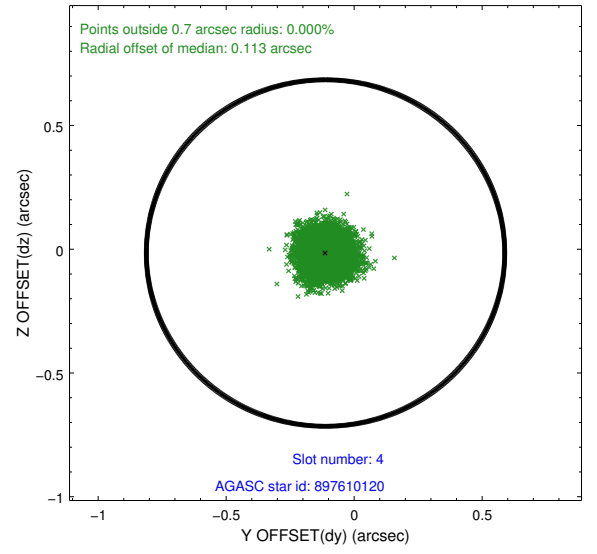
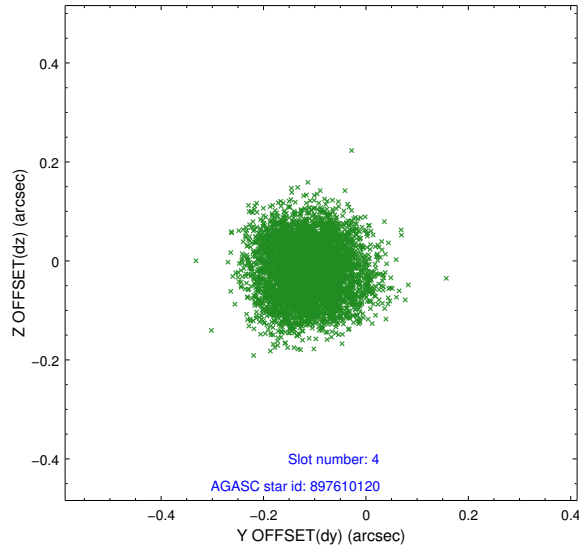
slot	status	id	mag	n_pts	med_dy	med_dz	dr1	dr2	ra	dec	mean_y	mean_z
0	FID	ACIS-S-2	7.10	2475	-0.064	-0.026	0.009	0.015	0.000000	0.000000	-758.86	-1731.55
1	FID	ACIS-S-4	7.21	2475	0.087	0.038	0.006	0.011	0.000000	0.000000	2154.29	176.51
2	FID	ACIS-S-5	7.23	2475	-0.054	-0.004	0.008	0.015	0.000000	0.000000	-1811.06	170.66
3	GUIDE	897607664	8.96	4949	0.068	0.021	0.064	0.104	274.763984	-25.327976	-262.15	-152.23
4	GUIDE	897610120	8.47	4949	-0.112	-0.015	0.087	0.131	275.375820	-25.427247	350.34	1774.40
5	GUIDE	897614272	8.74	4951	-0.036	0.084	0.074	0.121	275.179042	-25.471578	424.61	1119.75
6	GUIDE	897607632	9.04	4951	0.105	-0.090	0.097	0.151	275.528210	-25.239953	-251.68	2355.52
7	GUIDE	897601280	9.68	4948	-0.024	0.003	0.108	0.182	274.221964	-25.156854	-1095.78	-1825.26

## 2.4 Star Slots

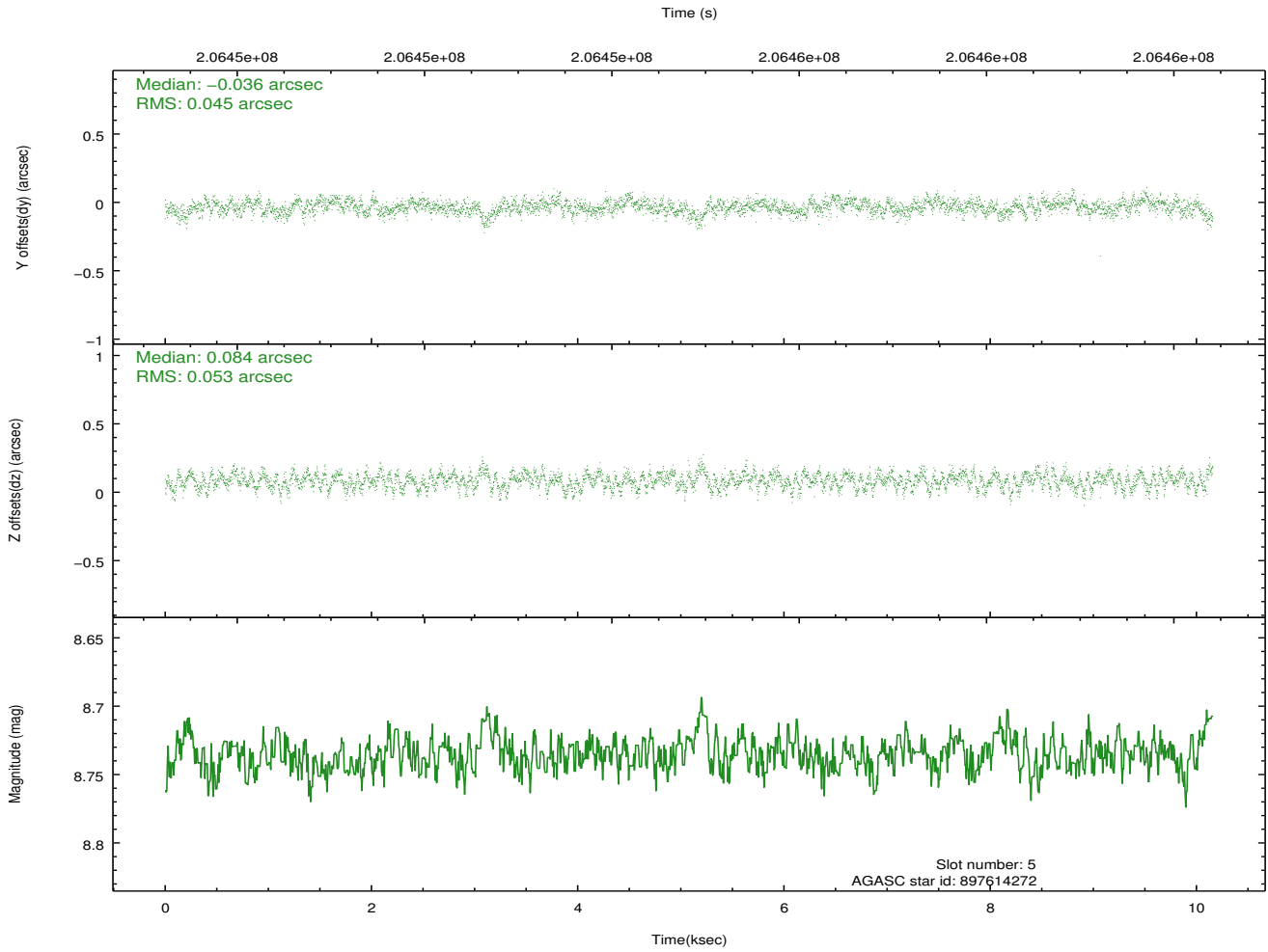
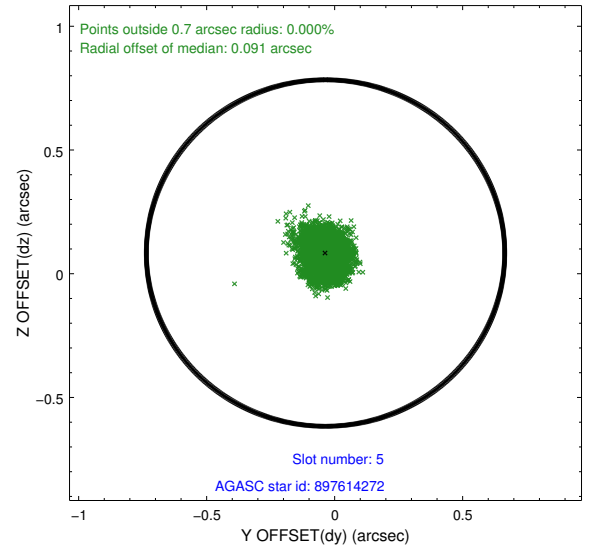
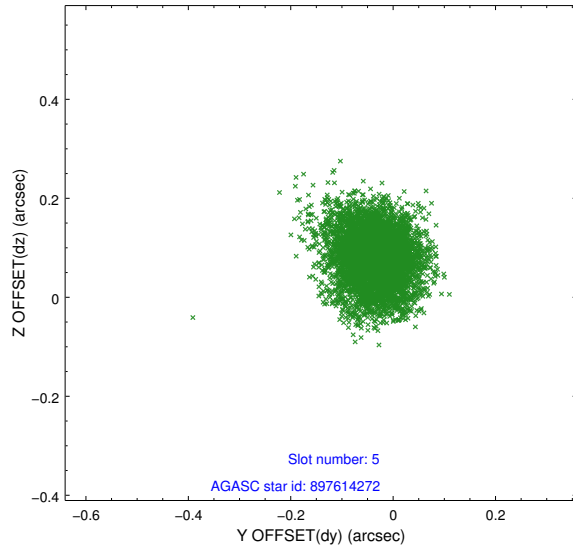
### 2.4.1 Slot 3



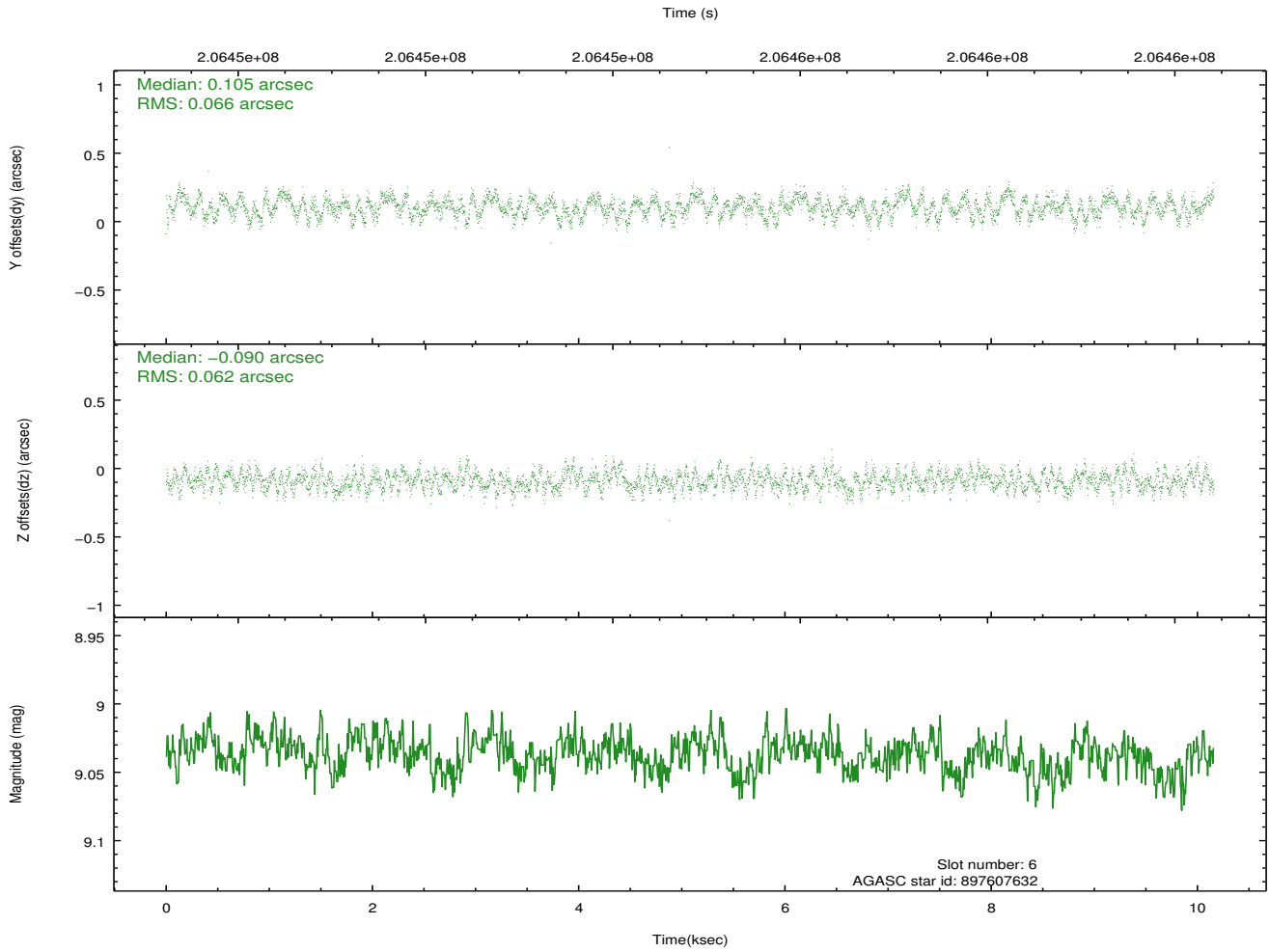
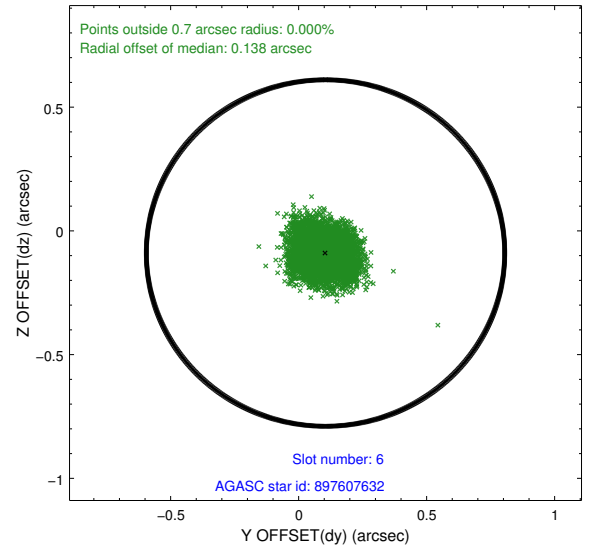
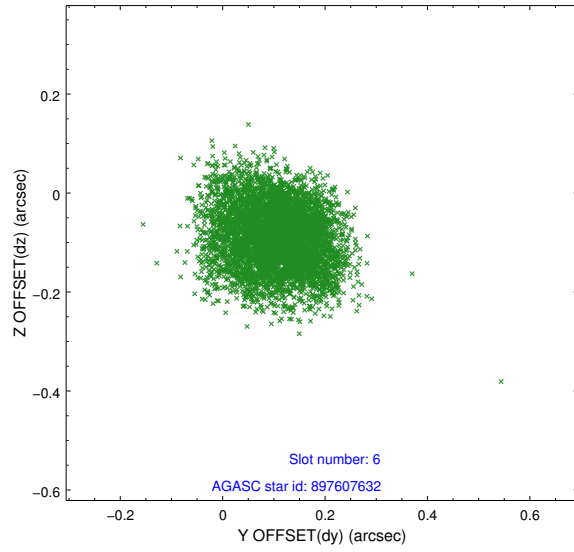
## 2.4.2 Slot 4



### 2.4.3 Slot 5

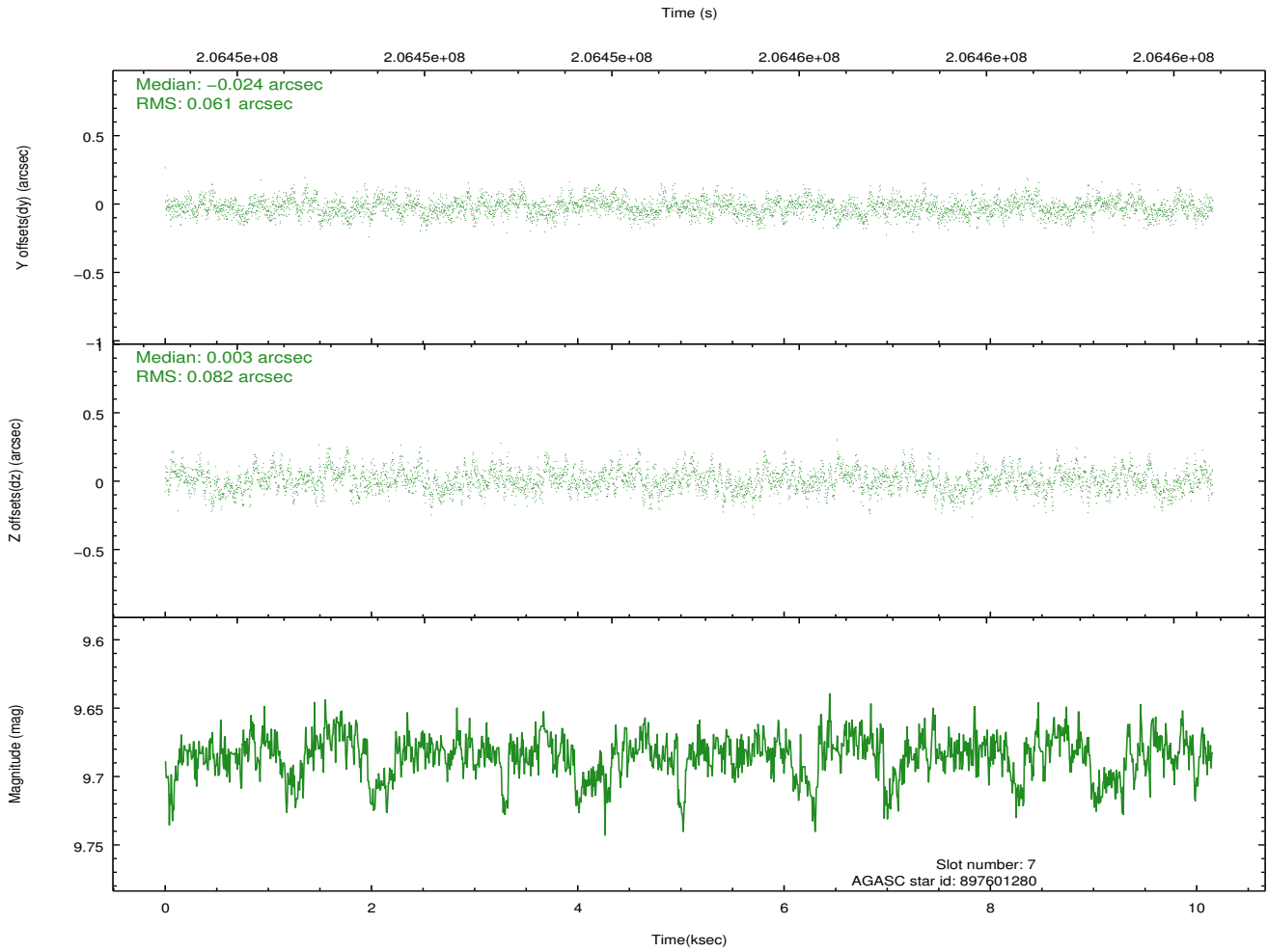
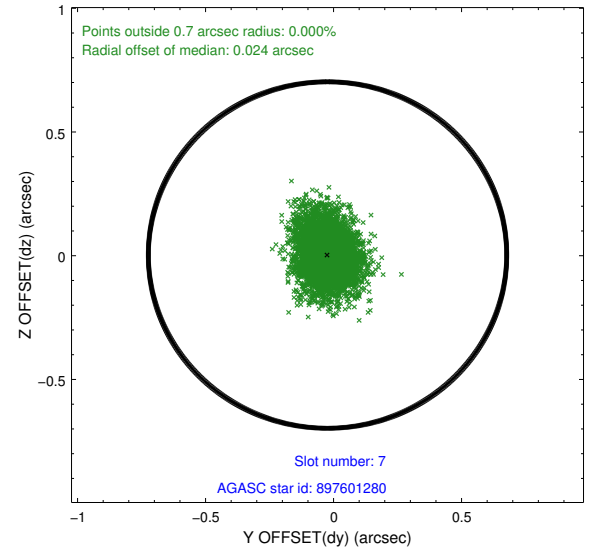
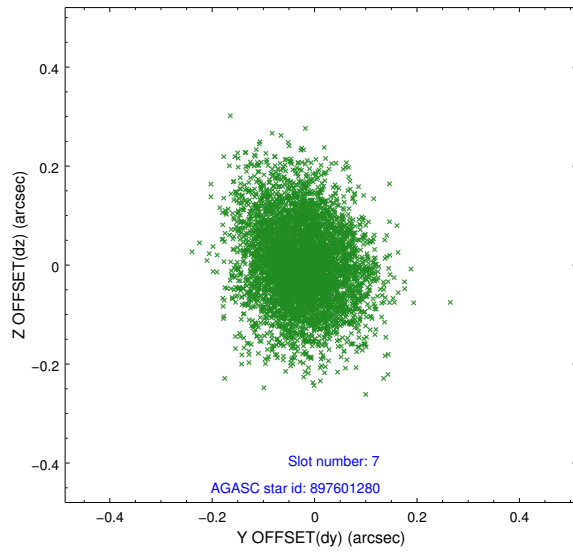


## 2.4.4 Slot 6



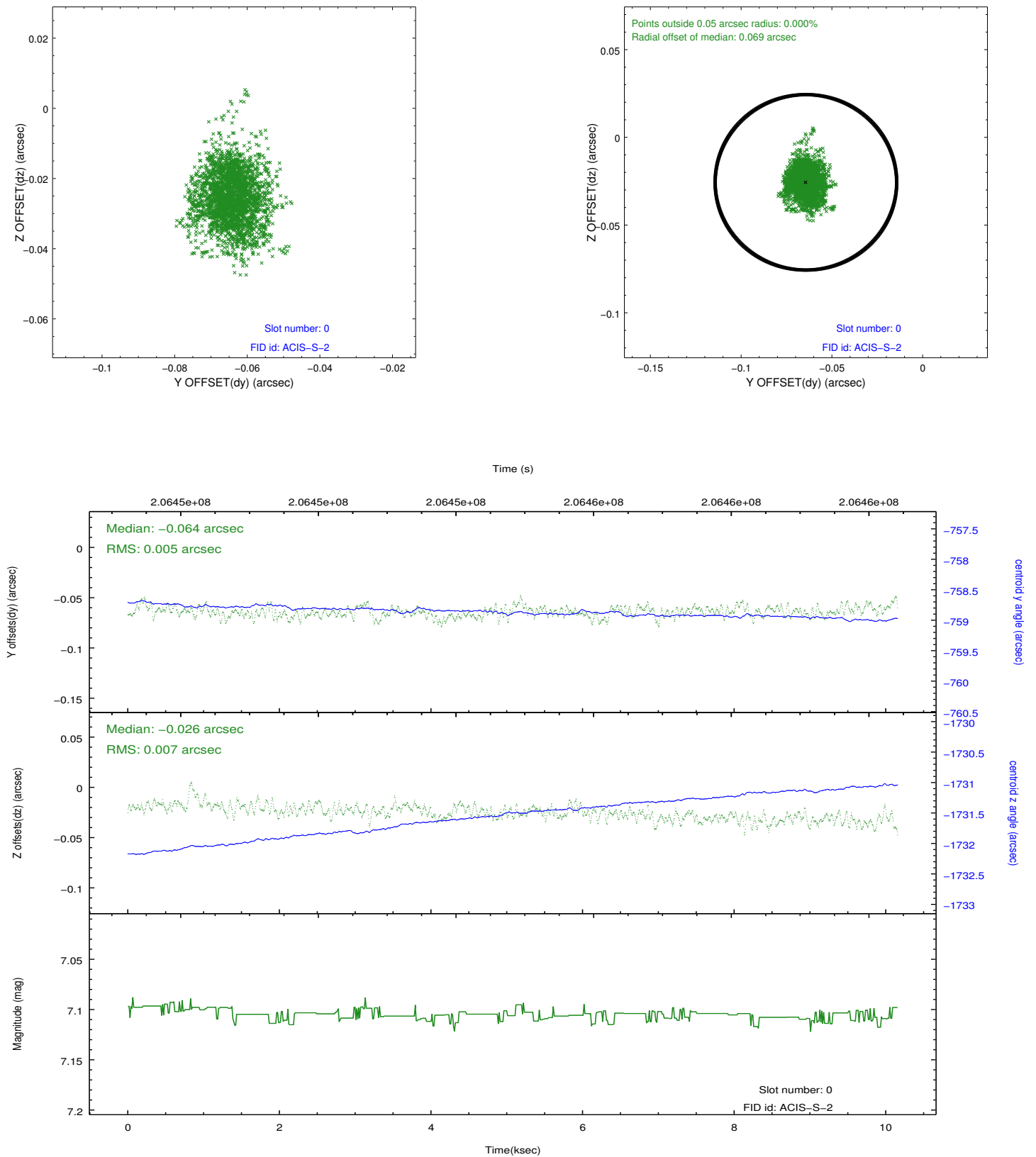


## 2.4.5 Slot 7

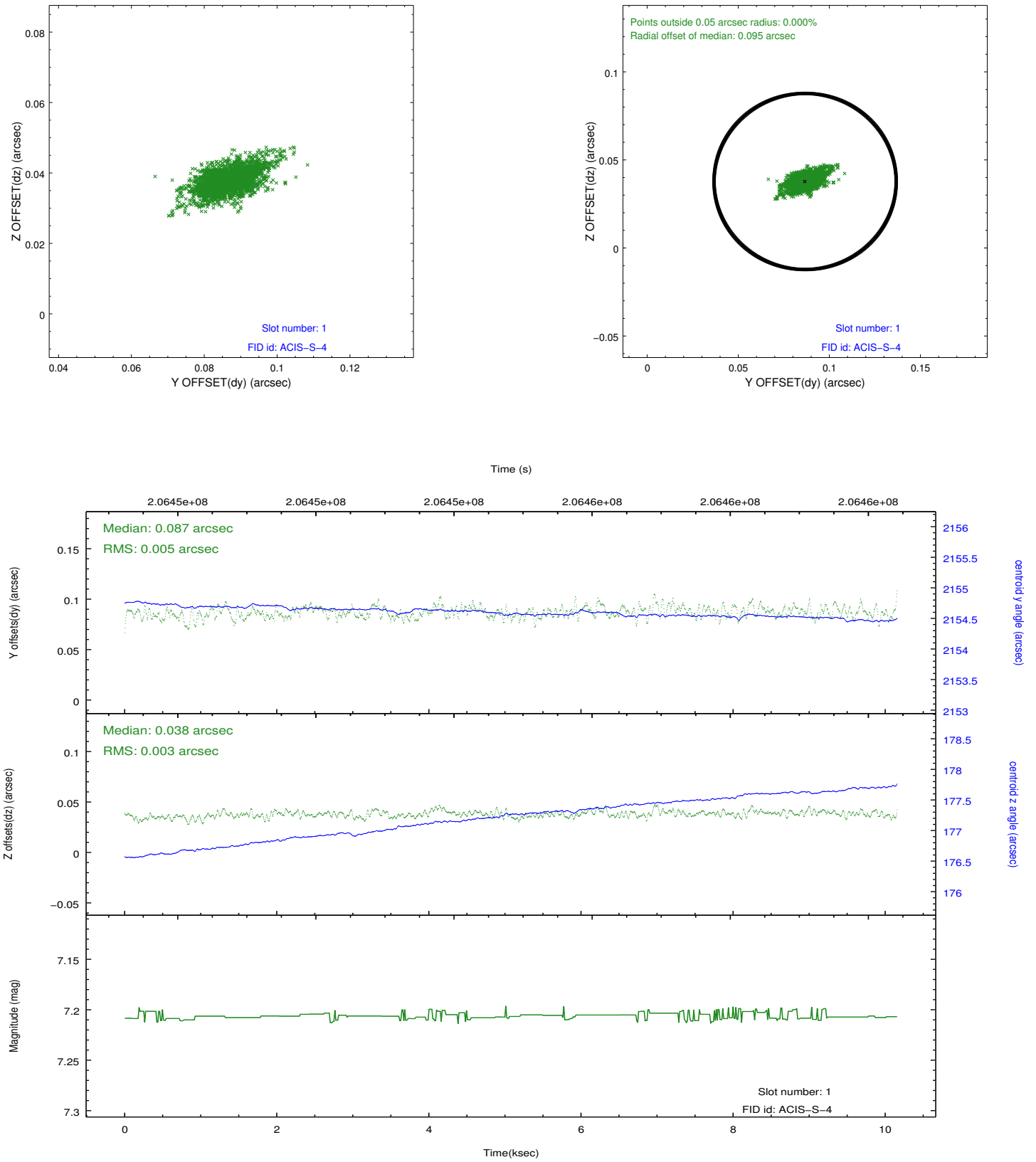


## 2.5 FID Slots

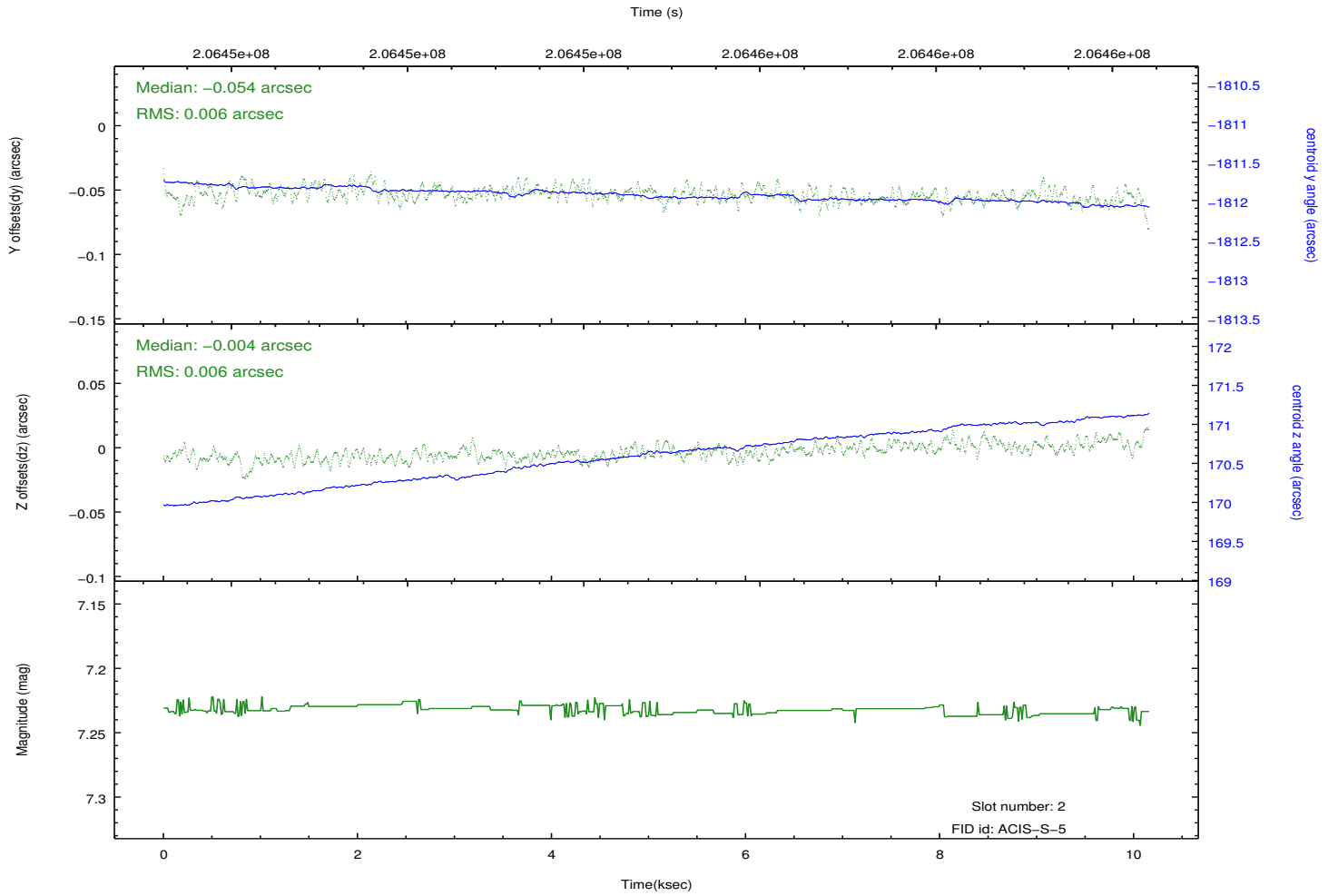
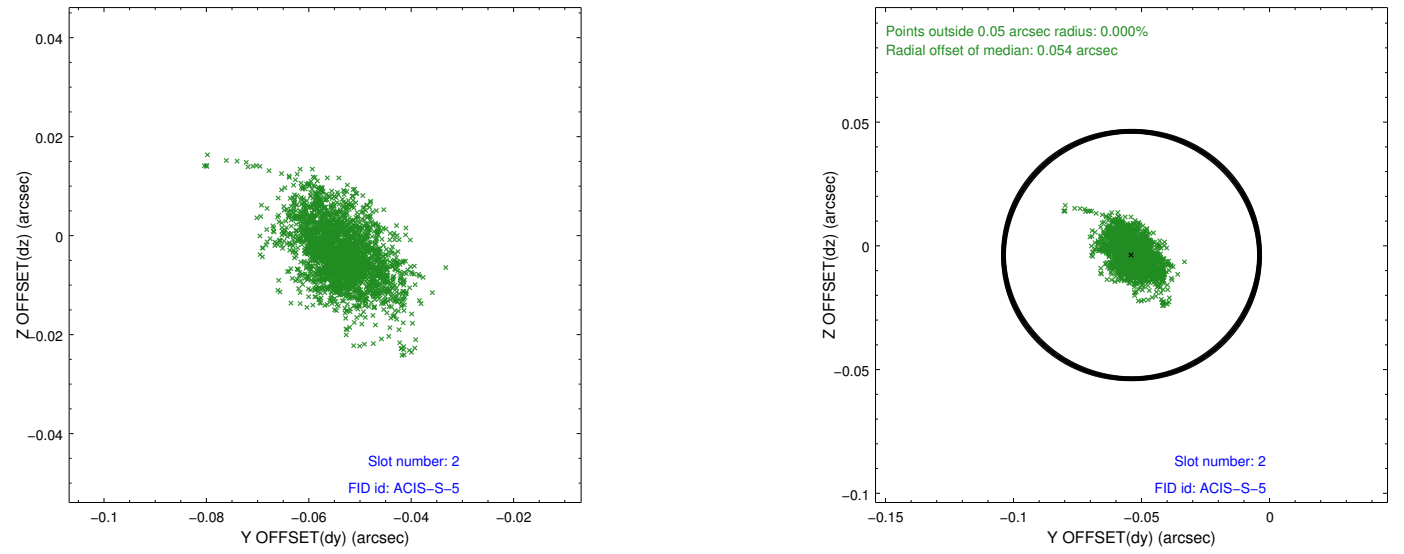
### 2.5.1 Slot 0



## 2.5.2 Slot 1



### 2.5.3 Slot 2



# A Summary

## A.1 Status

V&V Scientist	Beth Sundheim
V&V Date (YYYY-MM-DD)	2012.12.13
V&V Edition	1
V&V Disposition and Status	OK
V&V Charge Time	10.154

## A.2 Comments

Joint proposal with NRAO.