

# V&V Reference Report

## L2 ASCDS Version : 7.6.7.2

Observation 4543 - L2 Version 001  
Chandra X-Ray Center

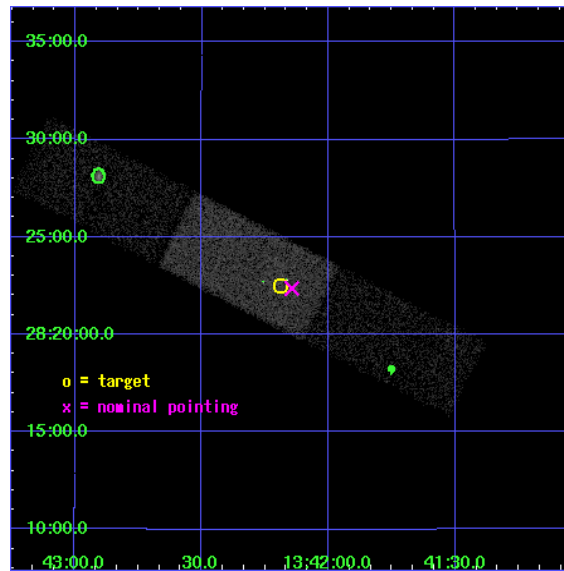
L2 Processing Date : May 18 2006

## Contents

<b>1</b>	<b>Front</b>	<b>2</b>
<b>2</b>	<b>OBI</b>	<b>3</b>
2.1	OBI . . . . .	3
2.1.1	Images . . . . .	3
2.1.2	Bias . . . . .	3
2.1.3	Parameters . . . . .	4
2.1.4	Events . . . . .	4
2.2	Compared Parameters . . . . .	5
2.3	Aspect . . . . .	6
2.4	Star Slots . . . . .	9
2.4.1	Slot 3 . . . . .	9
2.4.2	Slot 4 . . . . .	10
2.4.3	Slot 5 . . . . .	11
2.4.4	Slot 6 . . . . .	12
2.4.5	Slot 7 . . . . .	13
2.5	FID Slots . . . . .	14
2.5.1	Slot 0 . . . . .	14
2.5.2	Slot 1 . . . . .	15
2.5.3	Slot 2 . . . . .	16
<b>3</b>	<b>Point Sources</b>	<b>17</b>
<b>A</b>	<b>Summary</b>	<b>18</b>
A.1	Status . . . . .	18
A.2	Comments . . . . .	18

# 1 Front

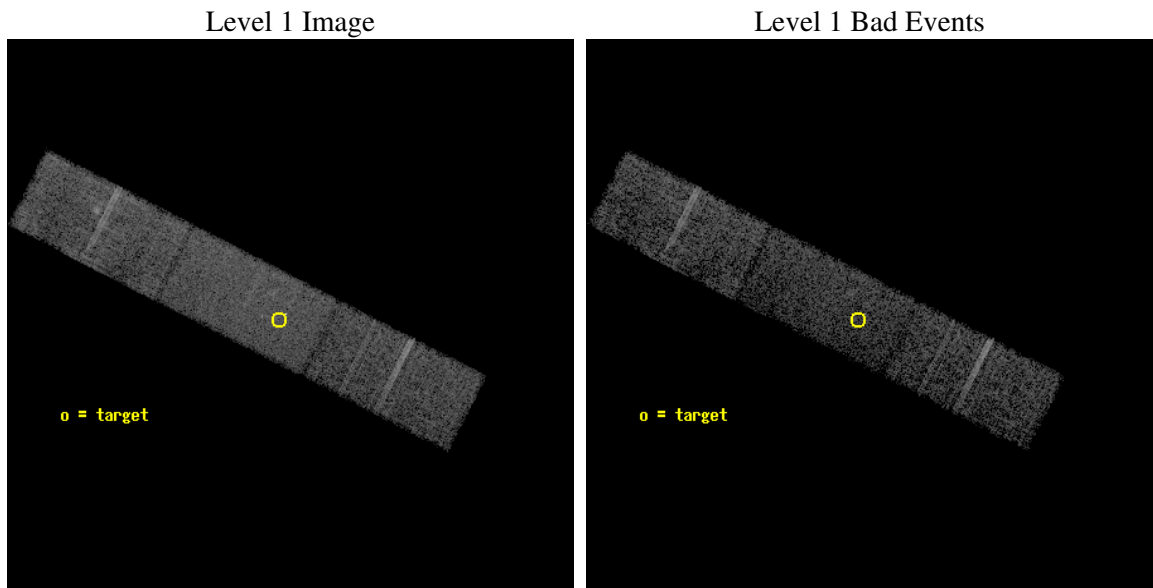
seq_num	300137
obs_id	4543
title	The Supersoft Source 1E1339.8+2837 and Globular Cluster M3
observer	Prof. Jonathan Grindlay
object	M3
dtcycle	0
cycle	P
ra_targ	205.546667
dec_targ	28.375556
ra_nom	205.53608664152
dec_nom	28.372740326525
roll_nom	206.98290275223
revision	2
ontime	10412.799961209
livetime	10152.391128757
ontime6	10412.799961209
ontime7	10412.799961209
ontime8	10412.799961209
l2events	29319



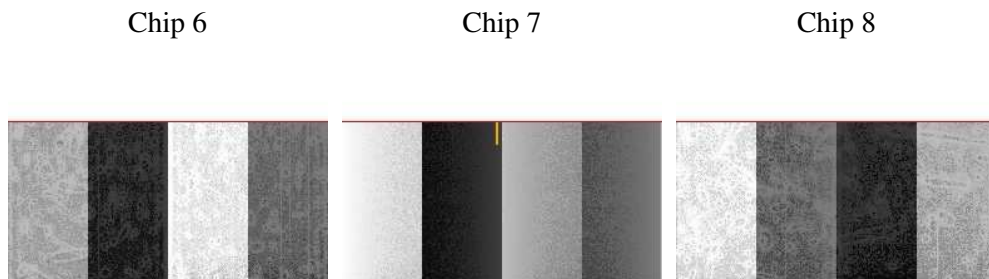
## 2 OBI

### 2.1 OBI

#### 2.1.1 Images



#### 2.1.2 Bias



### 2.1.3 Parameters

obi_num	0
ascdsver	7.6.7.2
caldsver	3.2.2
date	2006-05-18T21:12:13
revision	2

sched_exp_time	10000.000000
ontime	10612.499128342
ontime6	10612.499128342
ontime7	10612.499128342
ontime8	10612.499128342
l1events	148585

### 2.1.4 Events

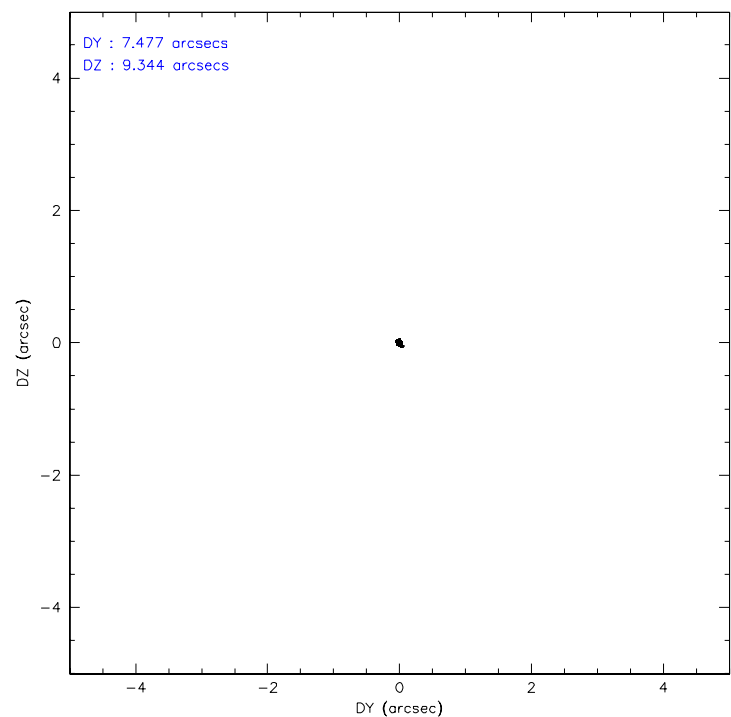
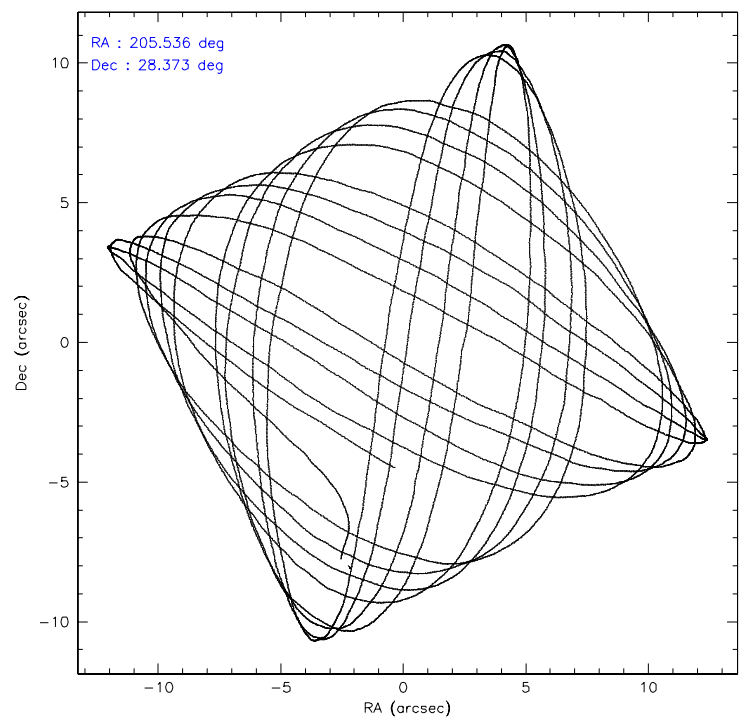
	<b>ccd 6</b>	<b>ccd 7</b>	<b>ccd 8</b>
level 1 events	41739	53016	53830
rejected events	36826	32029	42894
rejected %	88%	60%	79%

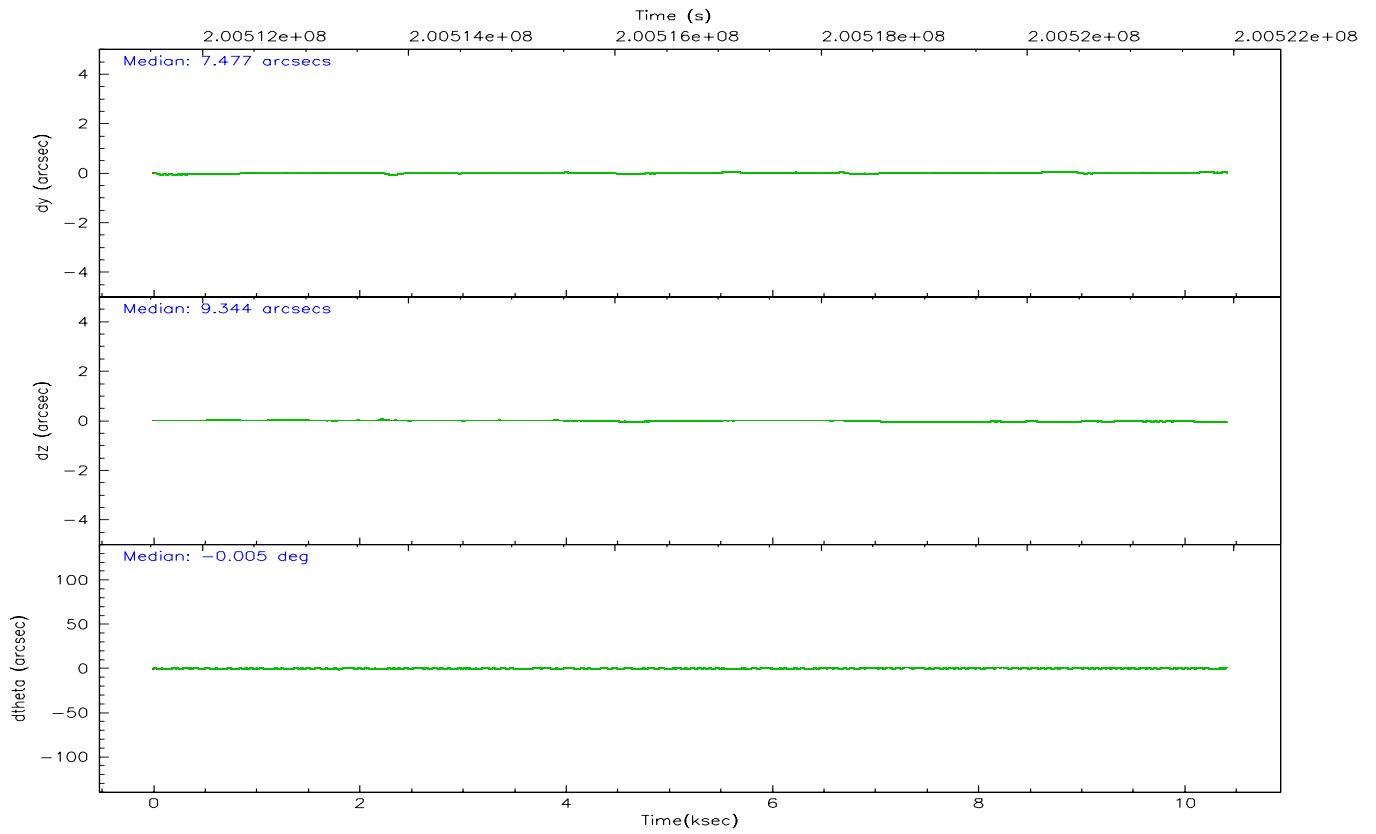
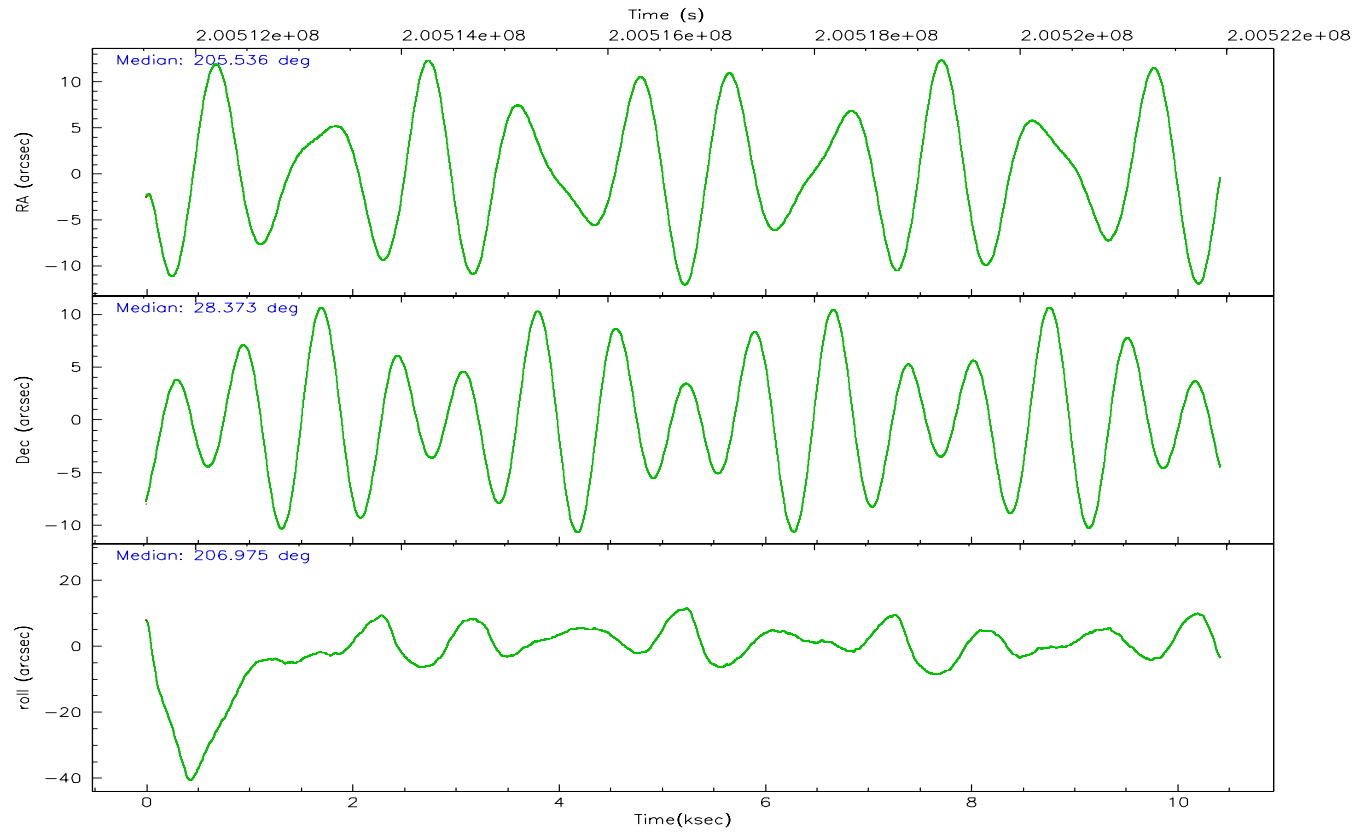
	<b>ccd 6</b>	<b>ccd 7</b>	<b>ccd 8</b>
grade 0 events	1891	1563	3460
	4%	2%	6%
grade 1 events	11	34	24
	0%	0%	0%
grade 2 events	1035	5386	2323
	2%	10%	4%
grade 3 events	590	1335	1216
	1%	2%	2%
grade 4 events	547	1303	1208
	1%	2%	2%
grade 5 events	1867	3661	2317
	4%	6%	4%
grade 6 events	934	11777	2885
	2%	22%	5%
grade 7 events	34864	27957	40397
	83%	52%	75%

## 2.2 Compared Parameters

Parameter	Planned	Actual	Parameter	Planned	Actual
Instrument	ACIS	ACIS	Obspar format version number	6	6
Detector	ACIS-678	ACIS-678	Obspar file type	PREDICTED	ACTUAL
Grating	NONE	NONE	Obspar update status	NONE	UPDATED
Data mode	VFAINT	VFAINT	On-chip summing requested	N	N
Observation mode	POINTING	POINTING	Subarray requested	1/2	1/2
Pointing RA	205.552665	205.5360866415203	Subarray start row	0	257
Pointing Dec	28.395779	28.37274032652491	Subarray row count	1024	512
Pointing Roll	206.818355	206.9829027522298	Alternating exposures requested	N	N
SIM focus pos (mm)	-0.684267	-0.6828225247311905	Primary exposure time	0.000000	1.6
SIM defocus (mm)	0	0.001444936568705701			
SIM translation stage pos (mm)	-190.132523	-190.1400660498719			
SIM translation stage offset (mm)	0	0.00754346686406393			
Observation start time	200511930.184000	200510856.13925			
Observation start date	2004-05-09T17:44:26	2004-05-09T17:27:36			
Observation end time	200521930.184000	200522502.70226			
Observation end date	2004-05-09T20:31:06	2004-05-09T20:41:42			
Read mode	TIMED	TIMED			

2.3 Aspect





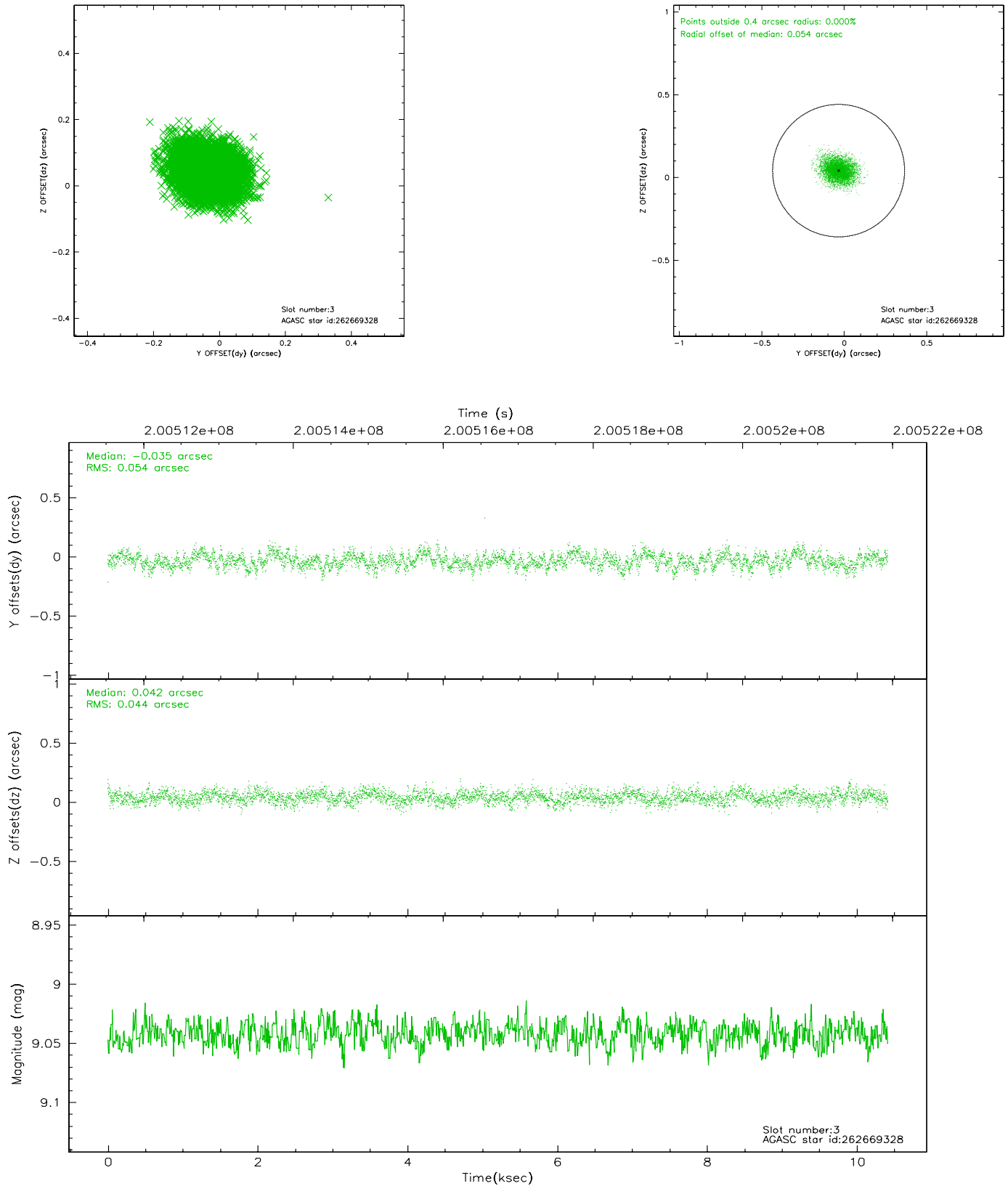
### Slot Statistics

slot	status	id	mag	n_pts	med_dy	med_dz	dr1	dr2	ra	dec	mean_y	mean_z
0	FID	ACIS-S-2	7.10	2541	-0.021	-0.009	0.007	0.011	0.000000	0.000000	-760.24	-1730.59
1	FID	ACIS-S-4	7.20	2541	0.041	0.013	0.005	0.010	0.000000	0.000000	2152.85	177.44
2	FID	ACIS-S-5	7.24	2541	-0.052	0.005	0.006	0.010	0.000000	0.000000	-1812.49	171.62
3	GUIDE	262669328	9.04	5081	-0.035	0.042	0.074	0.121	206.280601	28.188398	-1727.90	1702.20
4	GUIDE	262675088	9.43	5049	0.157	-0.116	0.081	0.130	204.972671	28.348526	1714.67	-680.53
5	GUIDE	262676040	9.16	5079	-0.033	0.052	0.084	0.137	205.599968	27.875331	711.22	1740.11
6	GUIDE	262679552	8.58	5078	-0.031	-0.053	0.088	0.134	205.617019	28.202388	132.09	713.96
7	GUIDE	262681752	9.57	5076	-0.059	0.076	0.088	0.144	205.441552	28.454810	217.96	-348.00

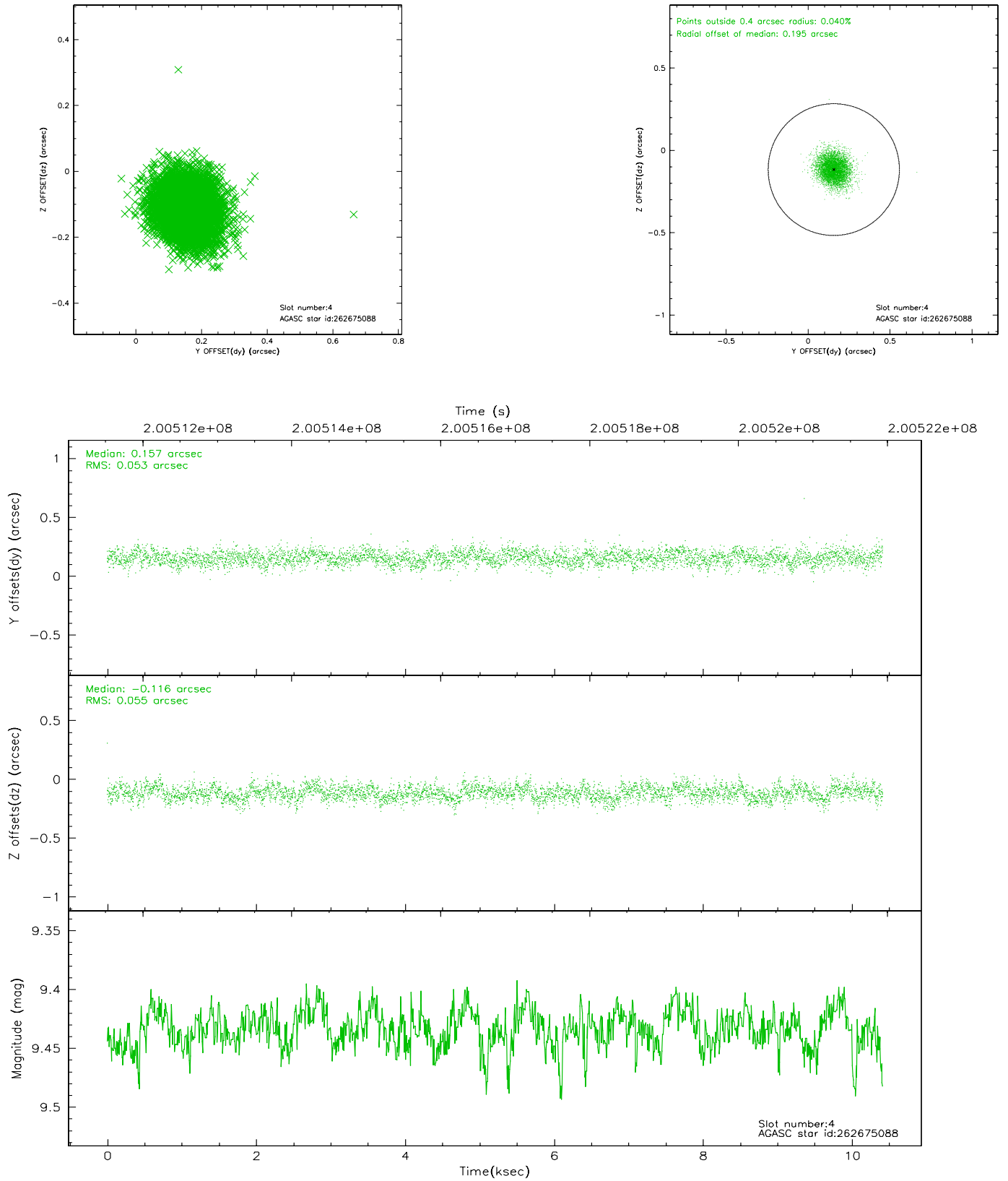


## 2.4 Star Slots

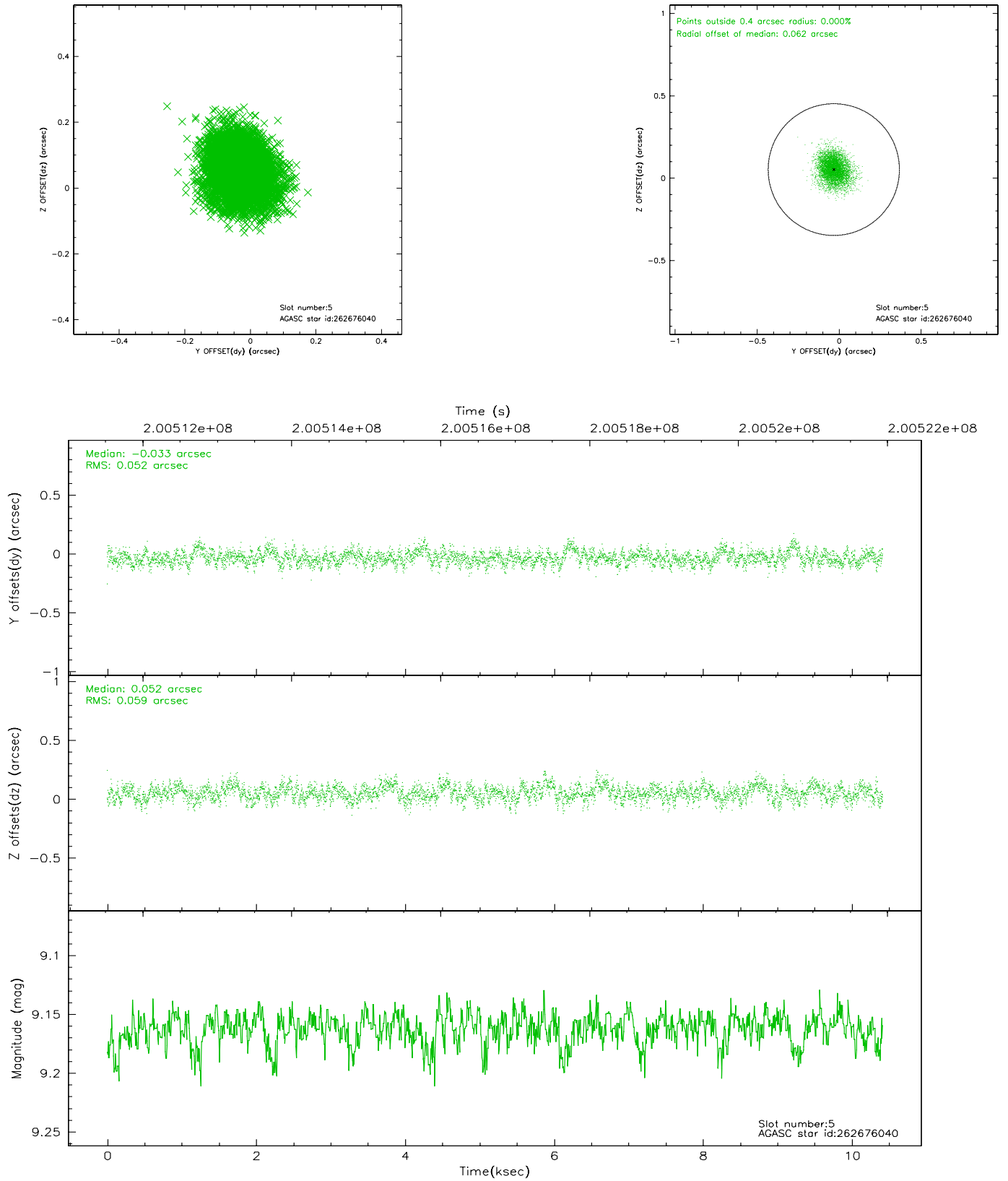
### 2.4.1 Slot 3



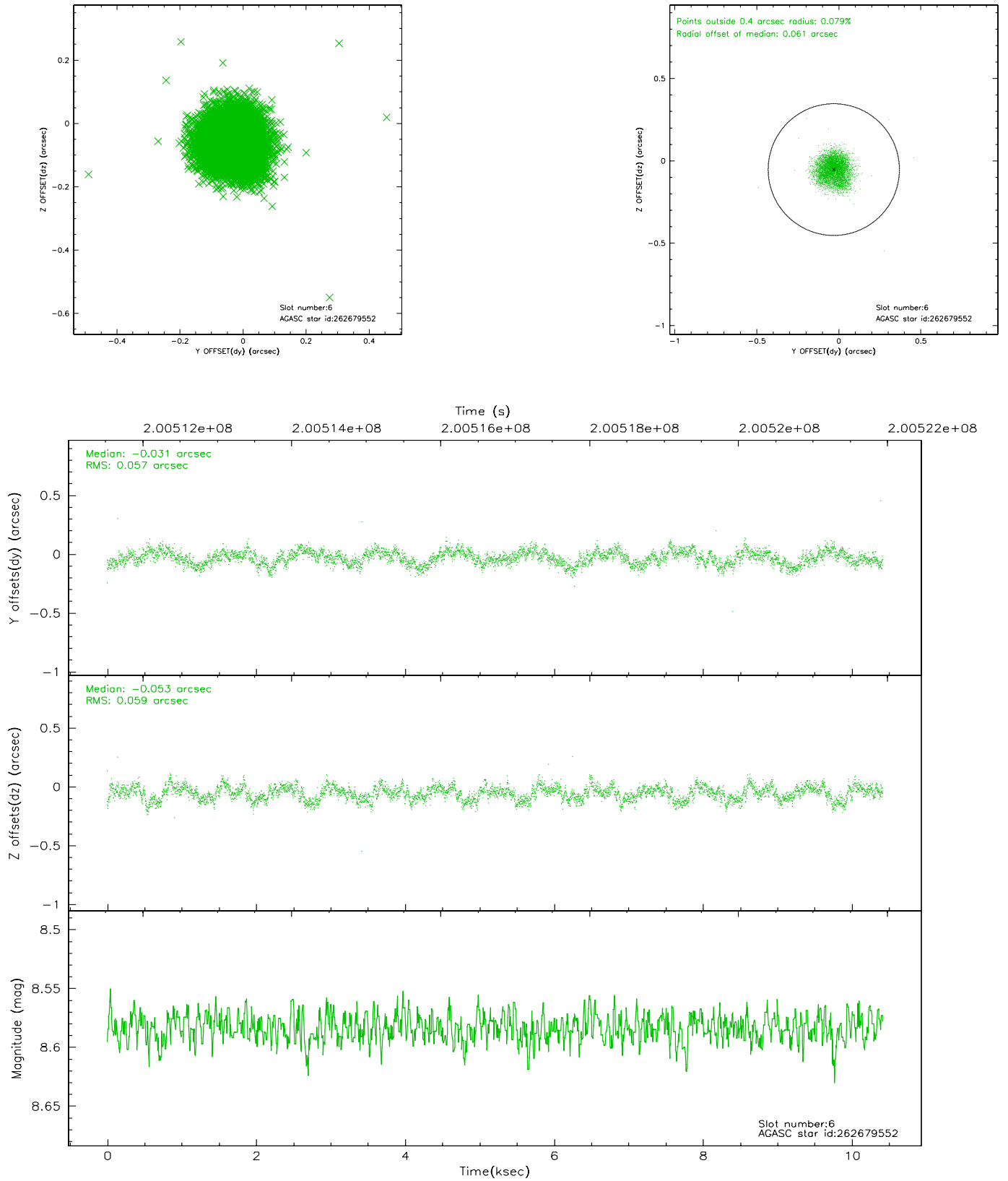
## 2.4.2 Slot 4



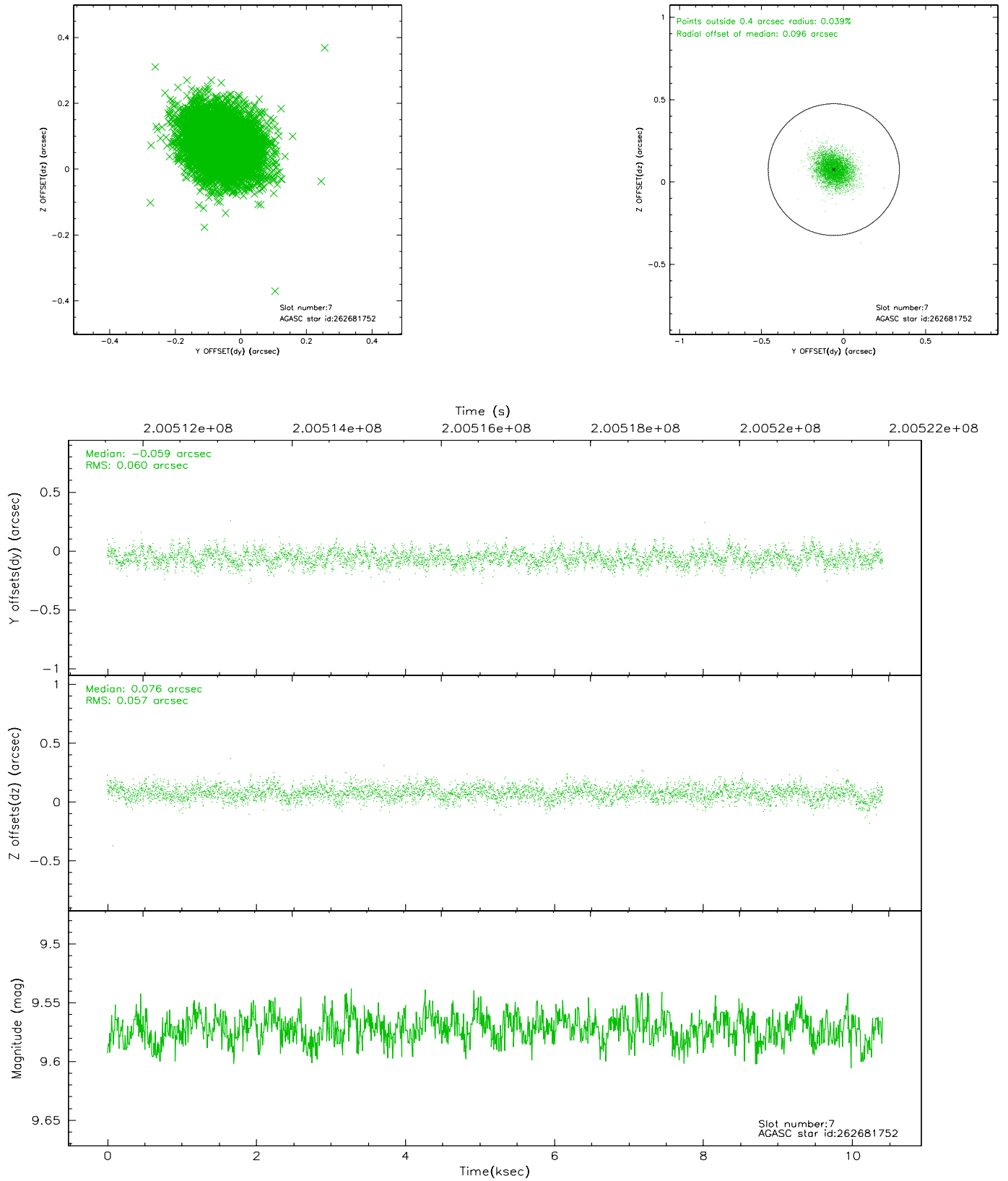
### 2.4.3 Slot 5



## 2.4.4 Slot 6

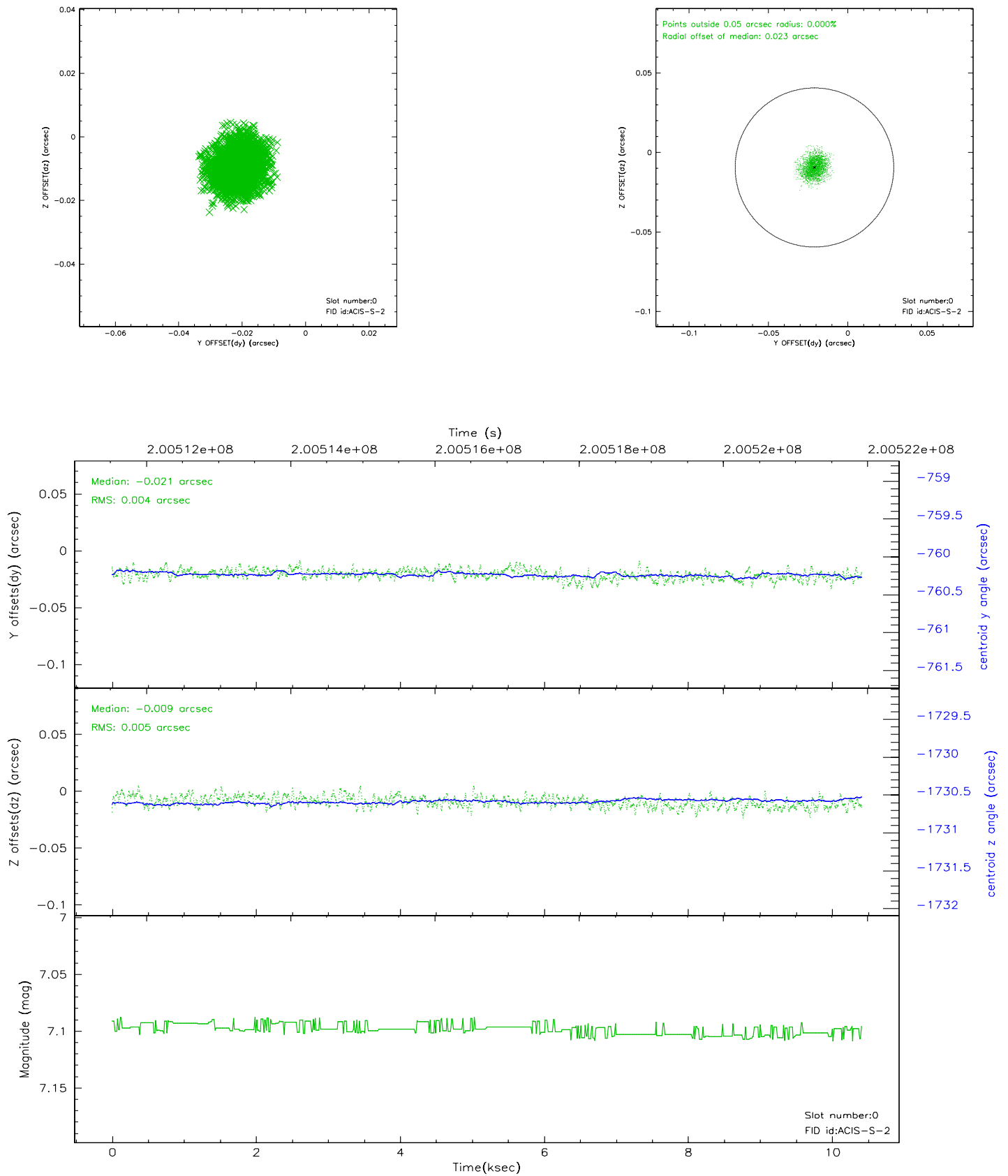


## 2.4.5 Slot 7

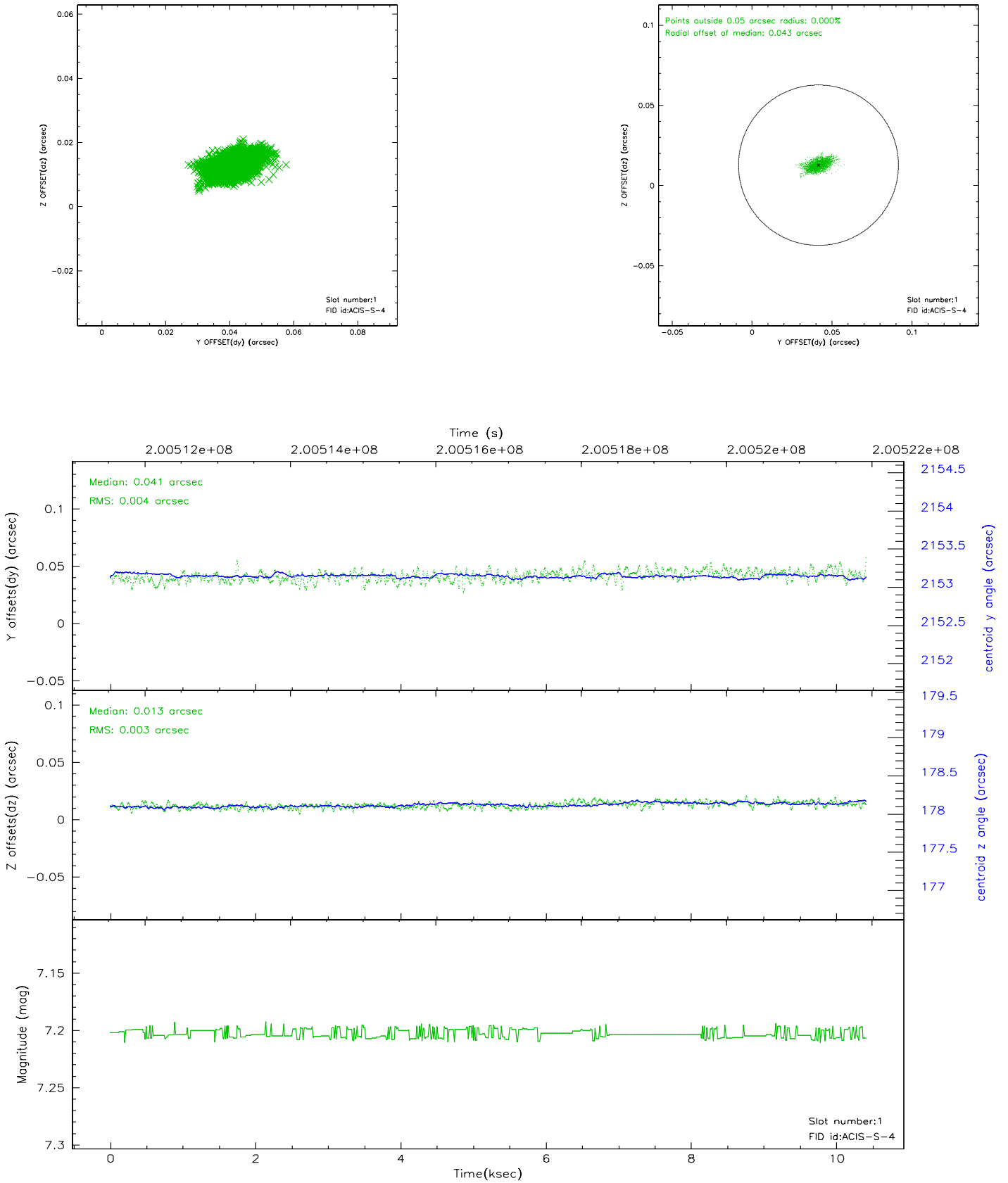


## 2.5 FID Slots

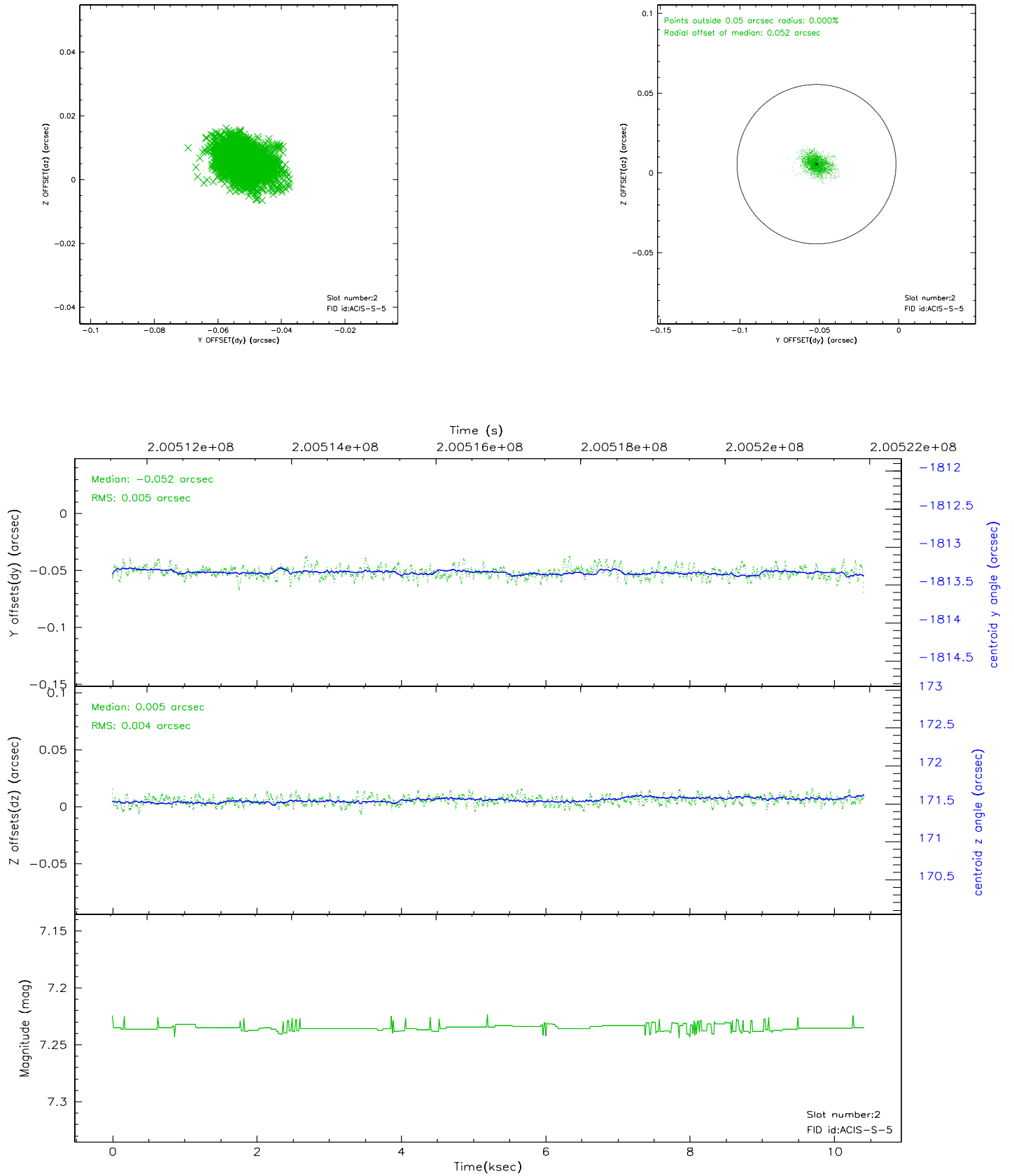
### 2.5.1 Slot 0



## 2.5.2 Slot 1

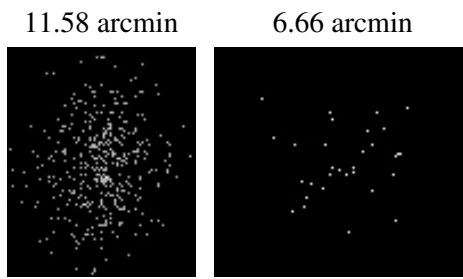


### 2.5.3 Slot 2





### 3 Point Sources



## A Summary

### A.1 Status

V&V Scientist	Jen Lauer
V&V Date (YYYY-MM-DD)	2006.05.19
V&V Edition	1
V&V Disposition and Status	OK
V&V Charge Time	10.412

### A.2 Comments

Monitor constraint met.