

V&V Reference Report

L2 ASCDS Version : 8.5

Observation 4541 - L2 Version 3
Chandra X-Ray Center

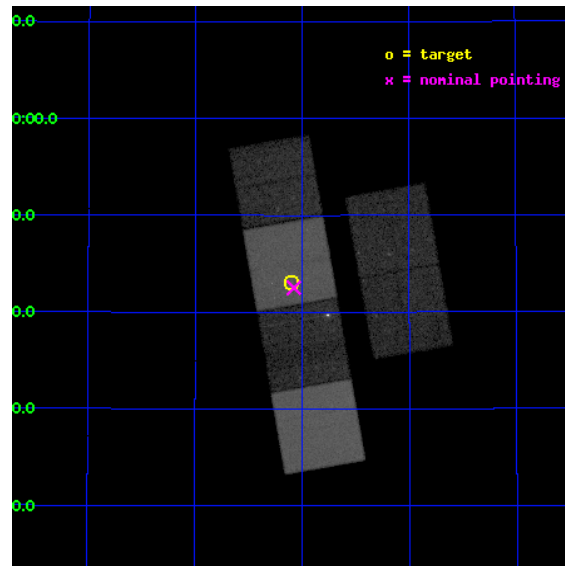
L2 Processing Date : Dec 12 2012

Contents

1	Front	2
2	OBI	3
2.1	OBI	3
2.1.1	Images	3
2.1.2	Bias	3
2.1.3	Parameters	4
2.1.4	Events	4
2.2	Compared Parameters	5
2.3	Aspect	6
2.4	Star Slots	9
2.4.1	Slot 3	9
2.4.2	Slot 4	10
2.4.3	Slot 5	11
2.4.4	Slot 6	12
2.4.5	Slot 7	13
2.5	FID Slots	14
2.5.1	Slot 0	14
2.5.2	Slot 1	15
2.5.3	Slot 2	16
A	Summary	17
A.1	Status	17
A.2	Comments	17

1 Front

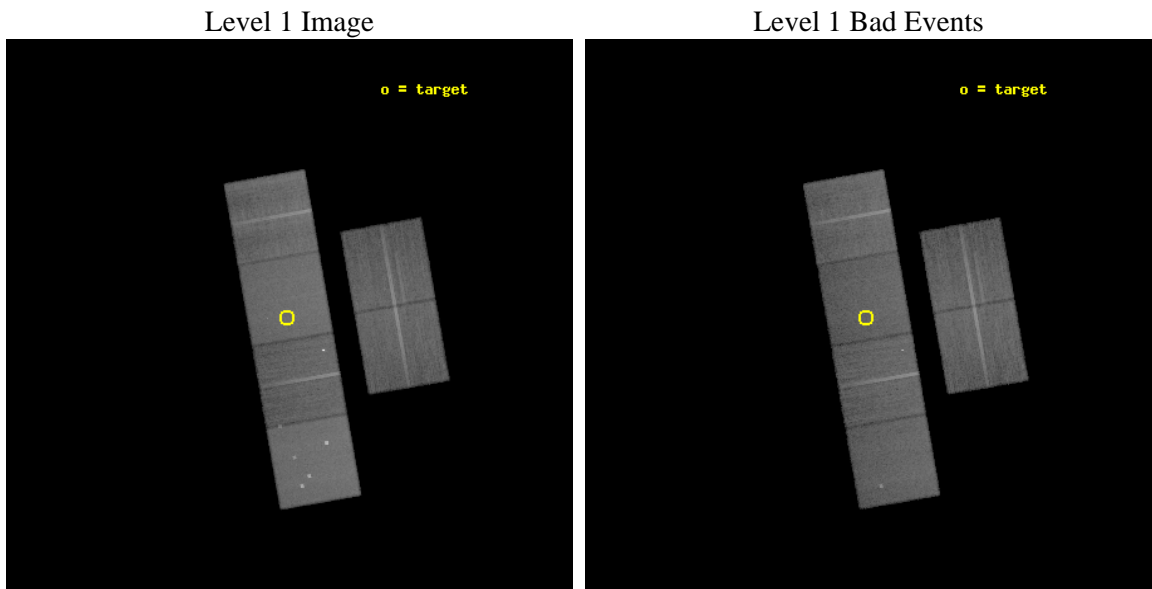
seq_num	300135	Sequence number
obs_id	4541	Observation id
title	Understanding the nature of supersoft X-ray sources	Proposal title
observer	Dr. Jochen Greiner	Principal investigator
object	M31-0046.0+4143	Source name
dtcycle	0	
cycle	P	events from which exps? Prim/Second/Both
ra_targ	11.52375	Observer's specified target RA [deg]
dec_targ	41.717778	Observer's specified target Dec [deg]
ra_nom	11.519331613033	Nominal RA [deg]
dec_nom	41.708679377985	Nominal Dec [deg]
roll_nom	260.01956310376	Nominal Roll [deg]
revision	3	Processing version of data
ontime	25955.199903309	Sum of GTIs [s]
livetime	25626.539533789	Livetime [s]
ontime2	25955.199903309	Sum of GTIs [s]
ontime3	25951.958913028	Sum of GTIs [s]
ontime5	25955.199903309	Sum of GTIs [s]
ontime6	25955.199903309	Sum of GTIs [s]
ontime7	25955.199903309	Sum of GTIs [s]
ontime8	25955.199903309	Sum of GTIs [s]
l2events	338603	Number of level 2 events



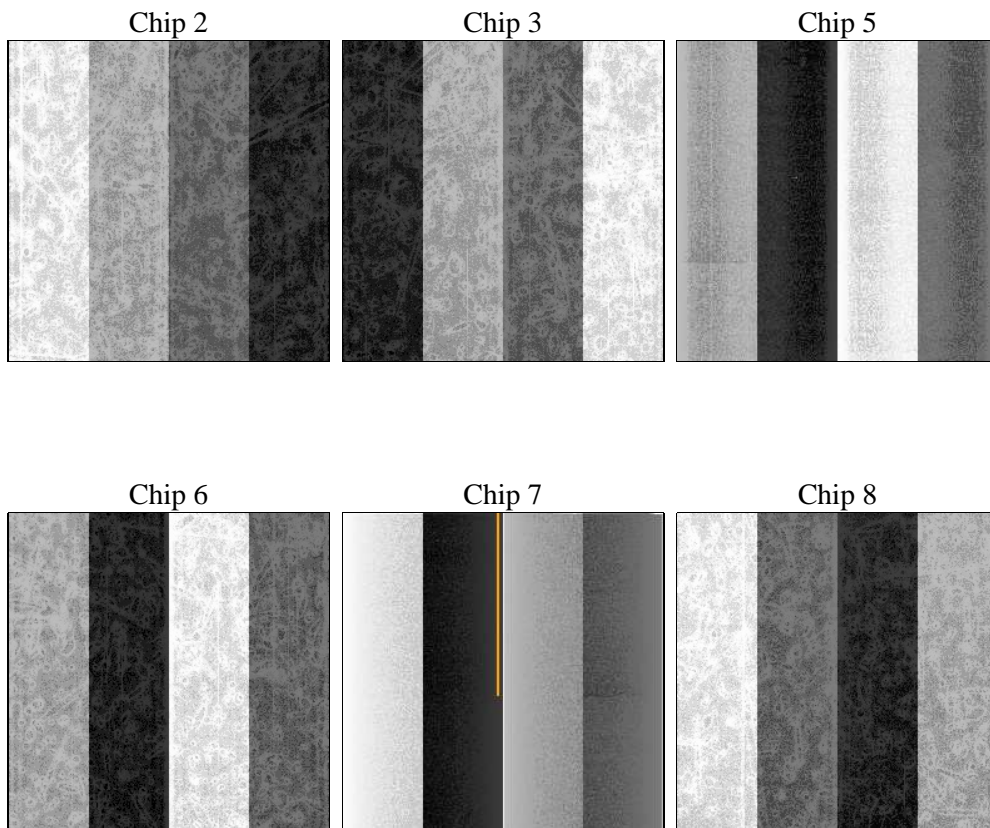
2 OBI

2.1 OBI

2.1.1 Images



2.1.2 Bias



2.1.3 Parameters

obi_num	0	Obi number	sched_exp_time	26000.000000	[s] Scheduled observation exposure time
ascdsver	8.5	Processing system revision	ontime	25955.199903309	Sum of GTIs [s]
caldsver	4.5.4	 	ontime2	25955.199903309	Sum of GTIs [s]
date	2012-12-12T01:43:26	Date and time of file creation	ontime3	25951.958913028	Sum of GTIs [s]
revision	3	Processing version of data	ontime5	25955.199903309	Sum of GTIs [s]
			ontime6	25955.199903309	Sum of GTIs [s]
			ontime7	25955.199903309	Sum of GTIs [s]
			ontime8	25955.199903309	Sum of GTIs [s]
			l1events	1452095	Number of level 1 events

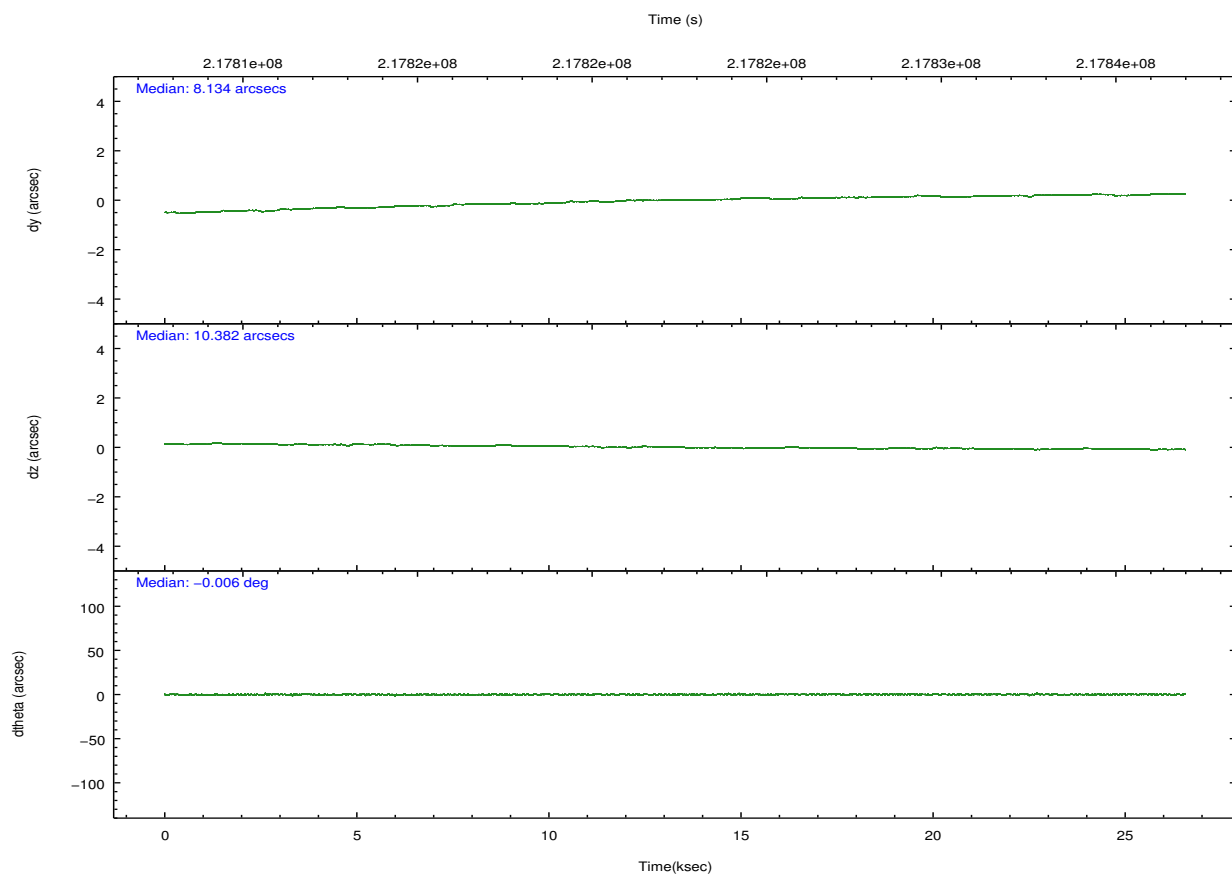
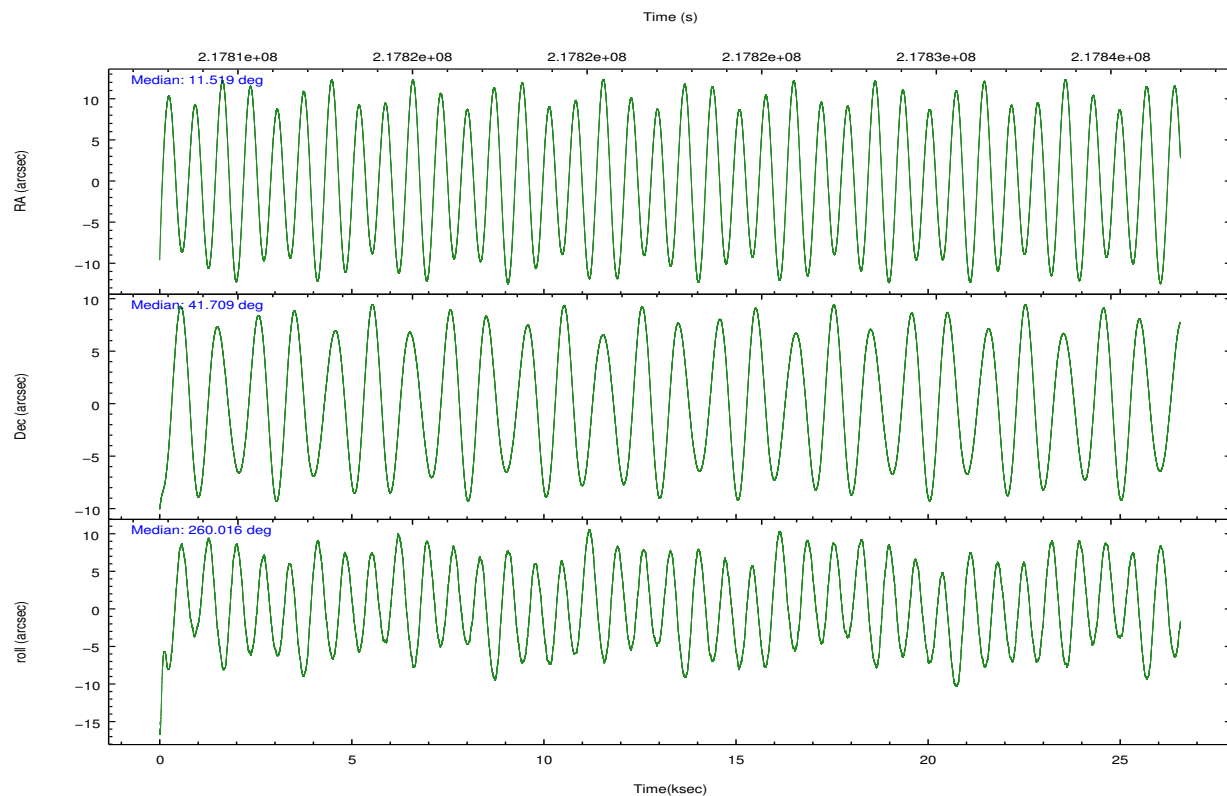
2.1.4 Events

	ccd 2	ccd 3	ccd 5	ccd 6	ccd 7	ccd 8		ccd 2	ccd 3	ccd 5	ccd 6	ccd 7	ccd 8
level 1 events	205244	191691	309837	222170	270230	252923	grade 0 events	10496	9988	20849	22394	9928	16452
rejected events	181503	168743	164170	181167	158247	199523		5%	5%	6%	10%	3%	6%
rejected %	88%	88%	52%	81%	58%	78%	grade 1 events	121	123	437	1065	247	171
								0%	0%	0%	0%	0%	0%
							grade 2 events	4806	4467	42394	7132	22259	11799
								2%	2%	13%	3%	8%	4%
							grade 3 events	2269	2279	5284	3051	9792	5629
								1%	1%	1%	1%	3%	2%
							grade 4 events	2227	2207	4827	3060	9882	5254
								1%	1%	1%	1%	3%	2%
							grade 5 events	8019	8711	21922	9580	25648	12127
								3%	4%	7%	4%	9%	4%
							grade 6 events	3947	4016	72333	5372	60144	14276
								1%	2%	23%	2%	22%	5%
							grade 7 events	173359	159900	141791	170516	132330	187215
								84%	83%	45%	76%	48%	74%

2.2 Compared Parameters

Parameter	Planned	Actual	Parameter	Planned	Actual
Instrument	ACIS	ACIS	Obspar format version number	7	7
Detector	ACIS-235678	ACIS-235678	Obspar file type	PREDICTED	ACTUAL
Grating	NONE	NONE	Obspar update status	NONE	UPDATED
Data mode	FAINT	FAINT	Number of optional ACIS chips dropped	0	0
Observation mode	POINTING	POINTING	On-chip summing requested	N	N
[deg] Pointing RA	11.506348	11.51933161303347	Subarray requested	NONE	NONE
[deg] Pointing Dec	41.734153	41.70867937798521	Alternating exposures requested	N	N
[deg] Pointing Roll	259.871585	260.019563103762	[s] Primary exposure time	0.000000	3.2
[mm] SIM focus pos	-0.684267	-0.6828225247311905			
[mm] SIM defocus	0	0.001444936568705701			
[mm] SIM translation stage pos	-190.132523	-190.1400660498719			
[mm] SIM translation stage offset	0	0.00754346686406393			
[s] Observation start time (MET)	217809657.184000	217808500.65925			
Observation start date	2004-11-25T22:39:53	2004-11-25T22:21:40			
[s] Observation end time (MET)	217835657.184000	217836560.54801			
Observation end date	2004-11-26T05:53:13	2004-11-26T06:09:20			
Read mode	TIMED	TIMED			

2.3 Aspect

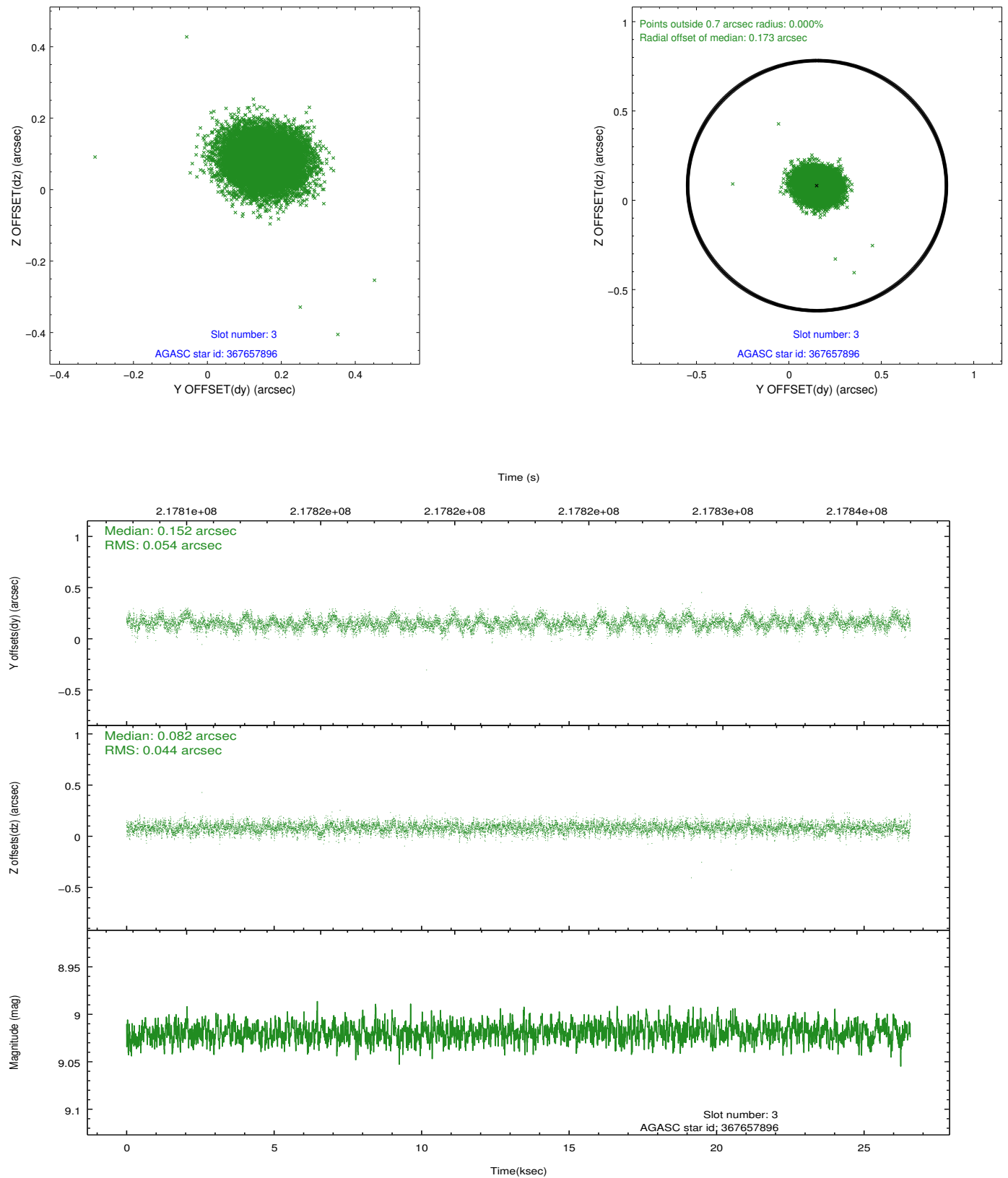


Slot Statistics

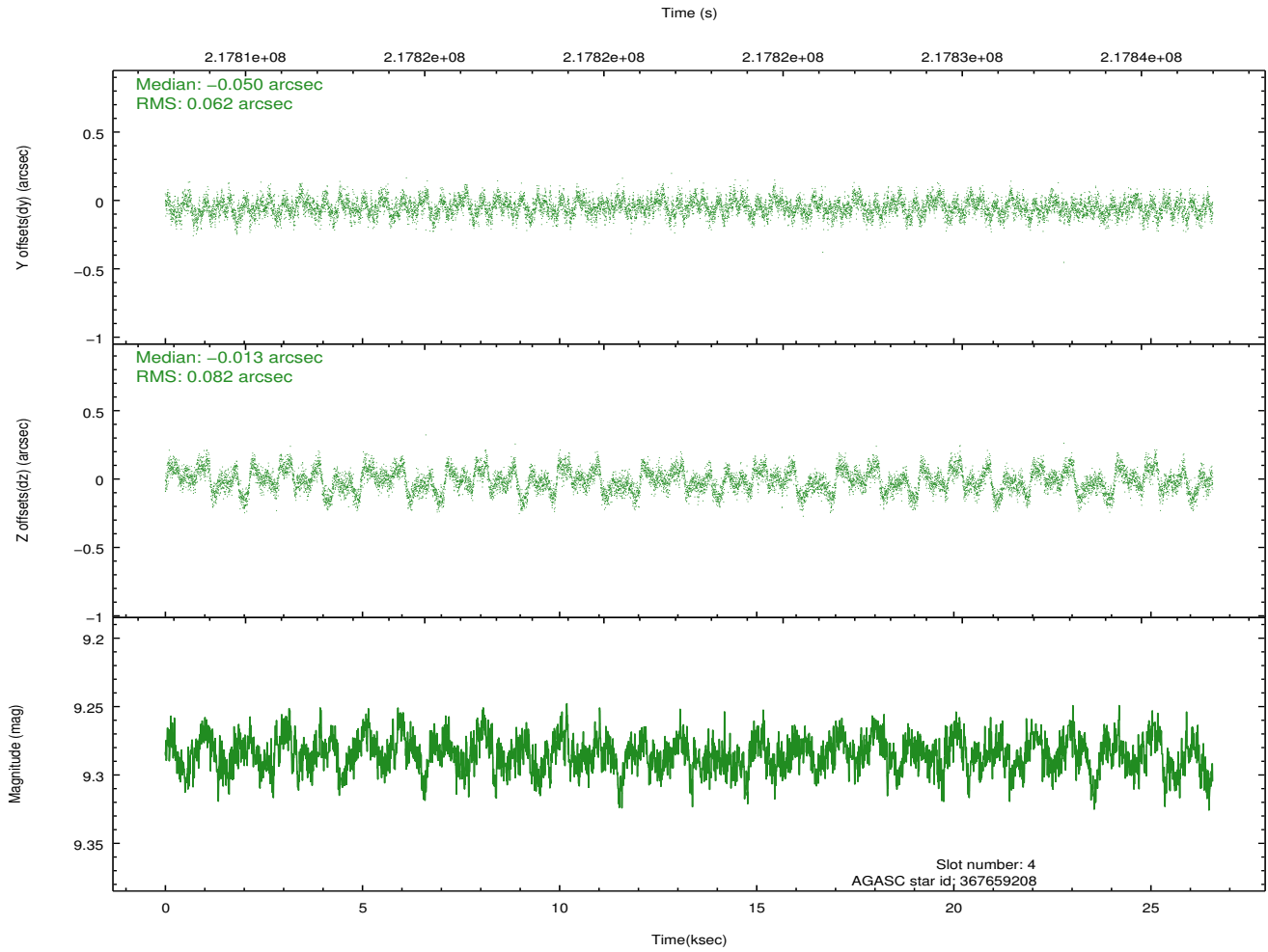
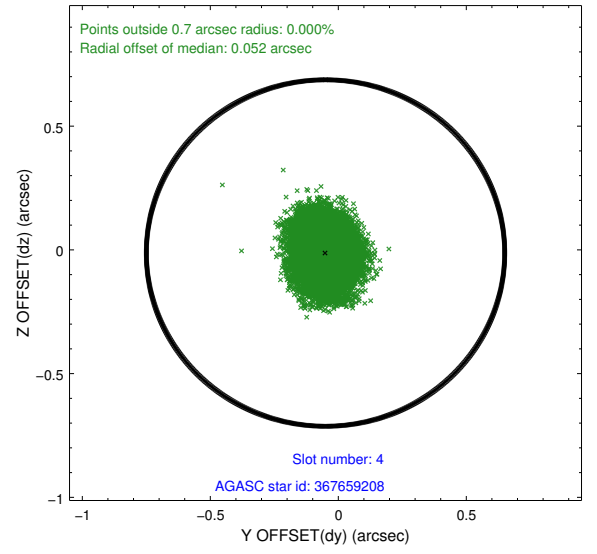
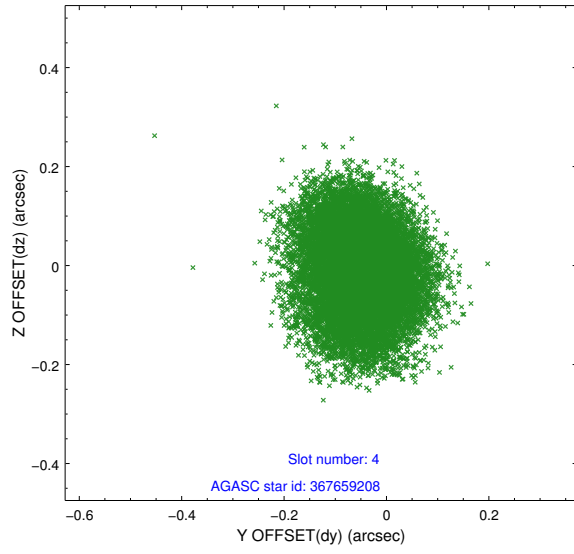
slot	status	id	mag	n_pts	med_dy	med_dz	dr1	dr2	ra	dec	mean_y	mean_z
0	FID	ACIS-S-1	7.19	6480	0.043	-0.054	0.008	0.021	0.000000	0.000000	935.22	-1727.34
1	FID	ACIS-S-5	7.24	6482	-0.088	0.023	0.013	0.021	0.000000	0.000000	-1813.85	170.18
2	FID	ACIS-S-6	7.35	6481	0.024	0.044	0.013	0.022	0.000000	0.000000	400.64	814.29
3	GUIDE	367657896	9.02	12956	0.152	0.082	0.074	0.120	11.197765	41.313576	1636.13	-555.10
4	GUIDE	367659208	9.28	12956	-0.050	-0.013	0.112	0.174	11.848231	42.124331	-1545.03	651.39
5	GUIDE	367663272	9.28	12954	-0.075	-0.033	0.107	0.176	10.656279	41.699429	514.17	-2229.45
6	GUIDE	367670520	9.24	12956	-0.012	0.013	0.093	0.148	11.265516	42.371946	-2148.19	-1034.63
7	GUIDE	367145056	7.41	12961	-0.016	-0.049	0.074	0.113	12.259409	41.132018	1766.10	2390.17

2.4 Star Slots

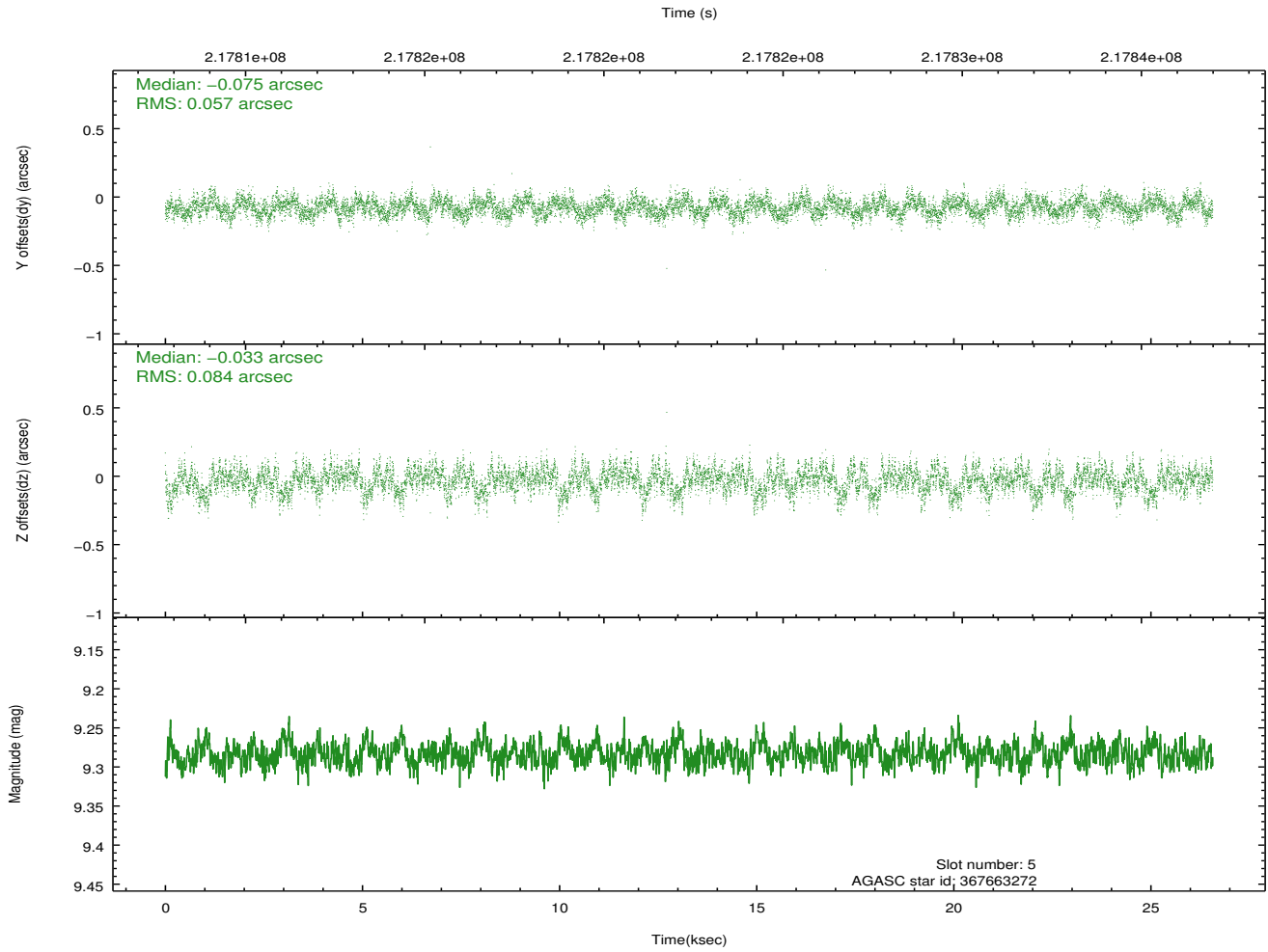
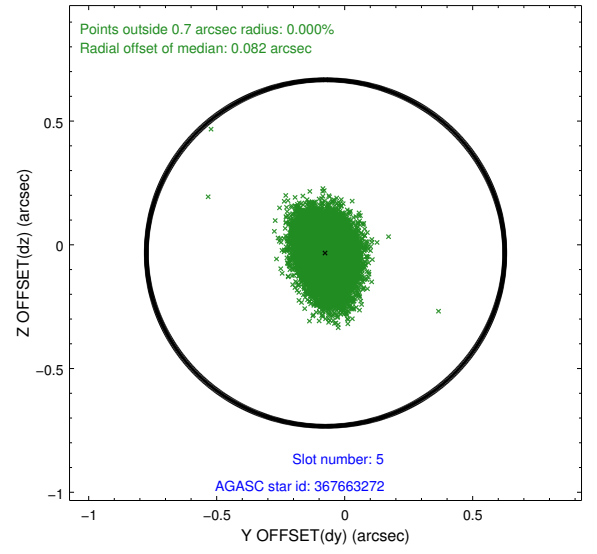
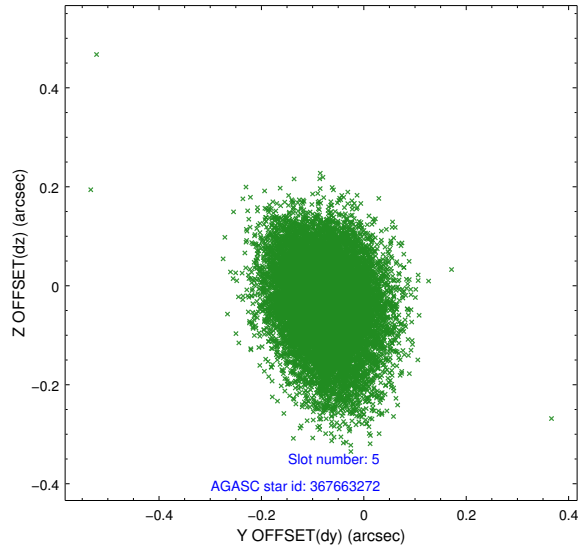
2.4.1 Slot 3



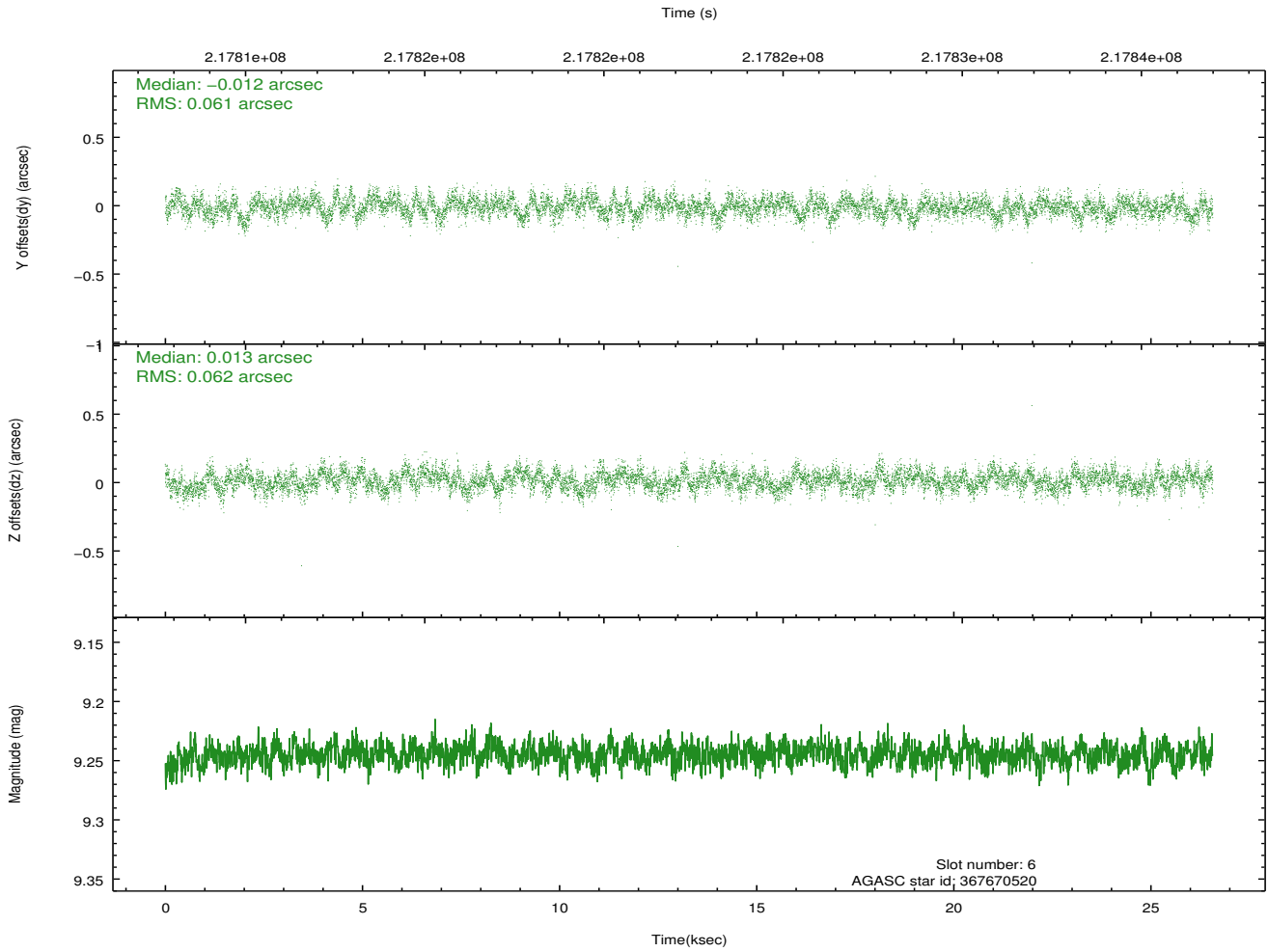
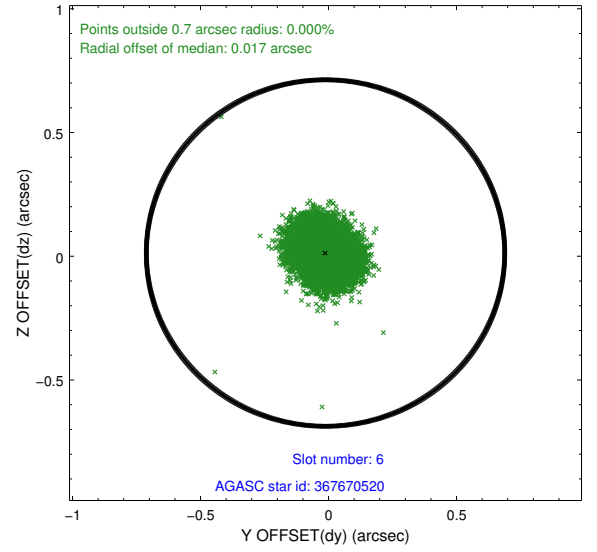
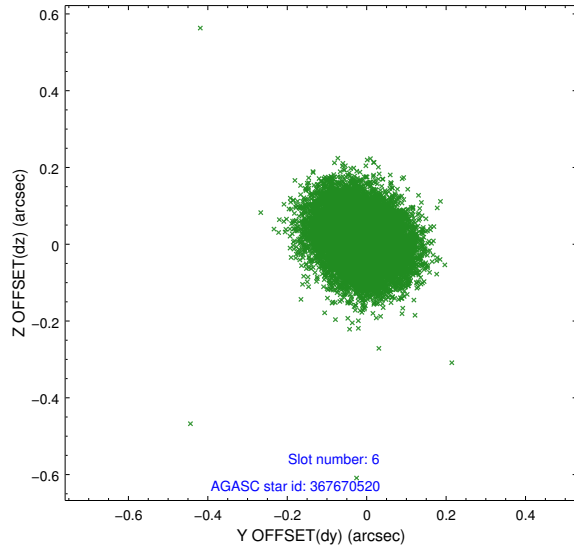
2.4.2 Slot 4



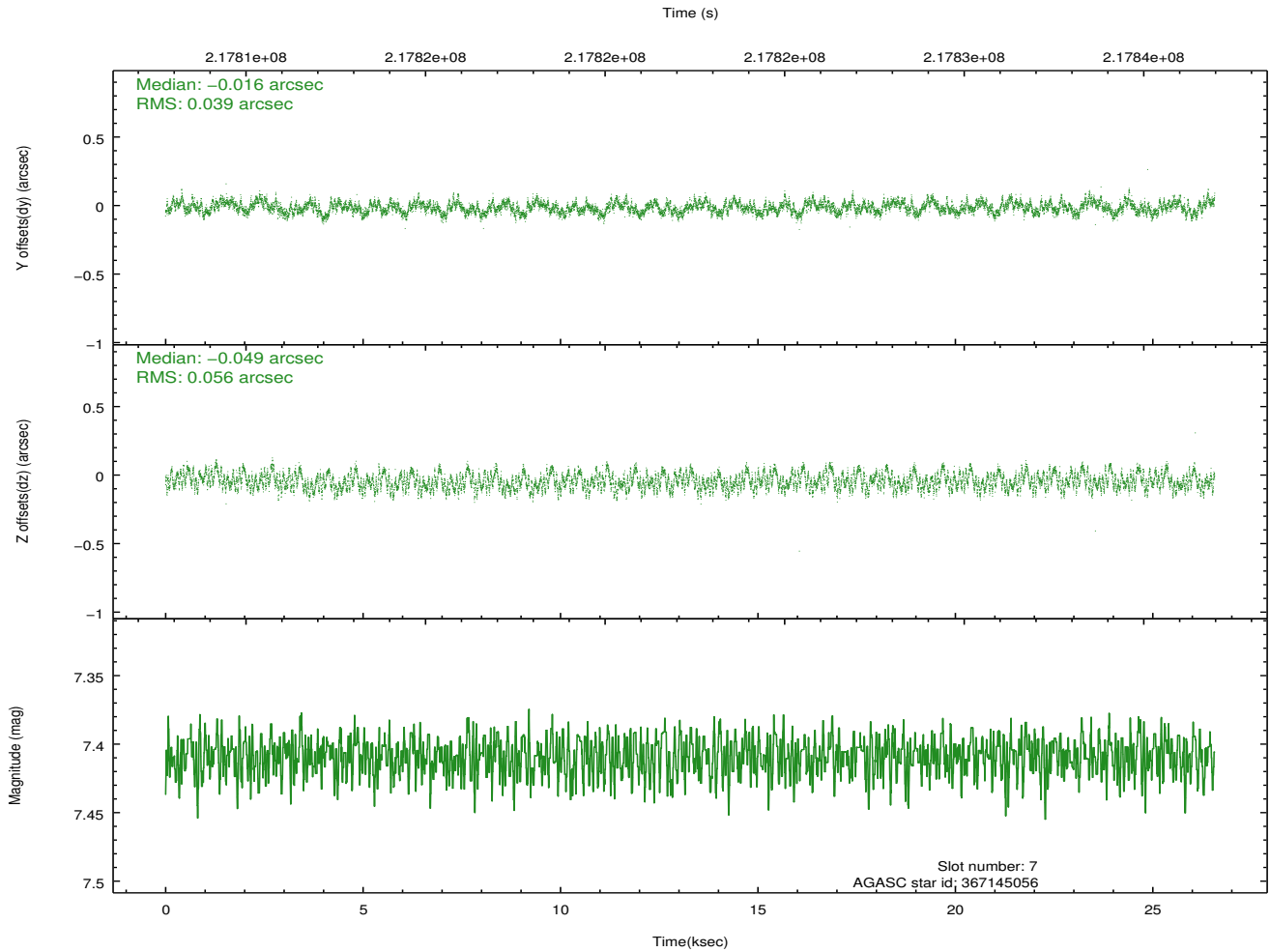
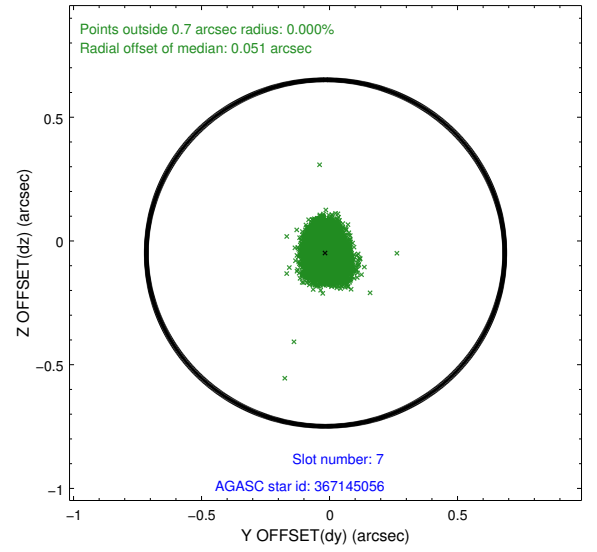
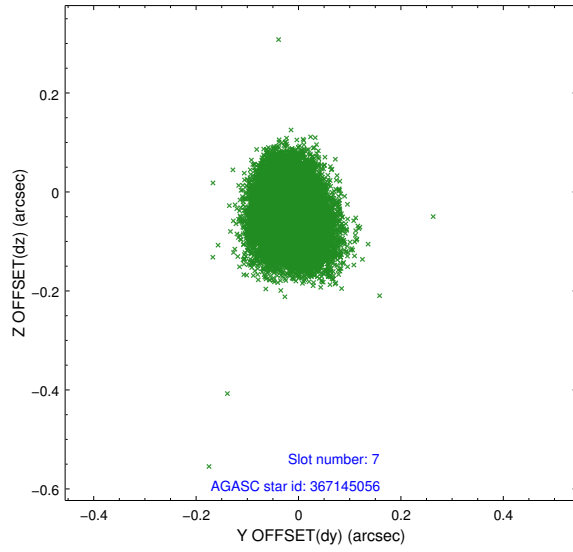
2.4.3 Slot 5



2.4.4 Slot 6

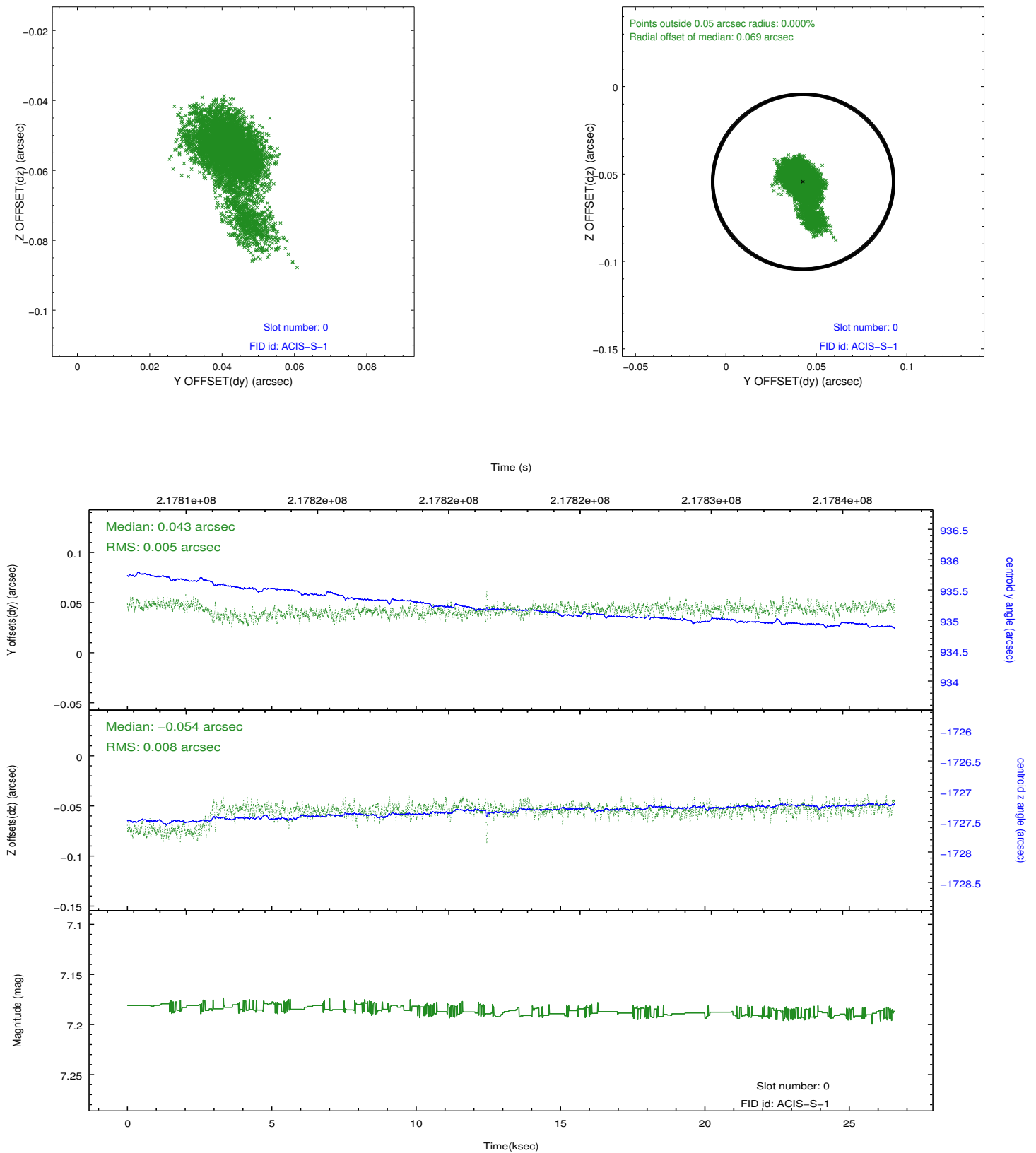


2.4.5 Slot 7

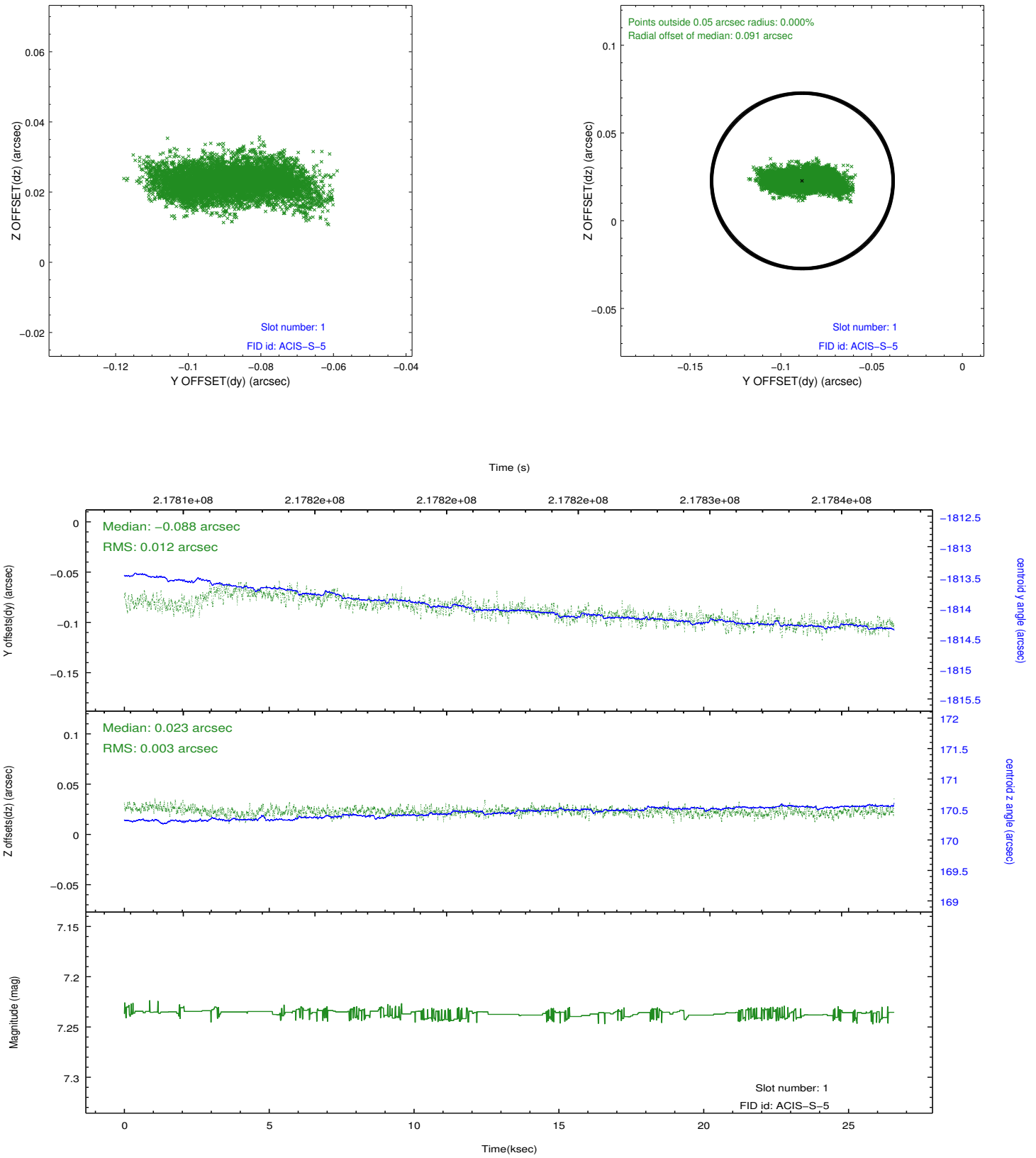


2.5 FID Slots

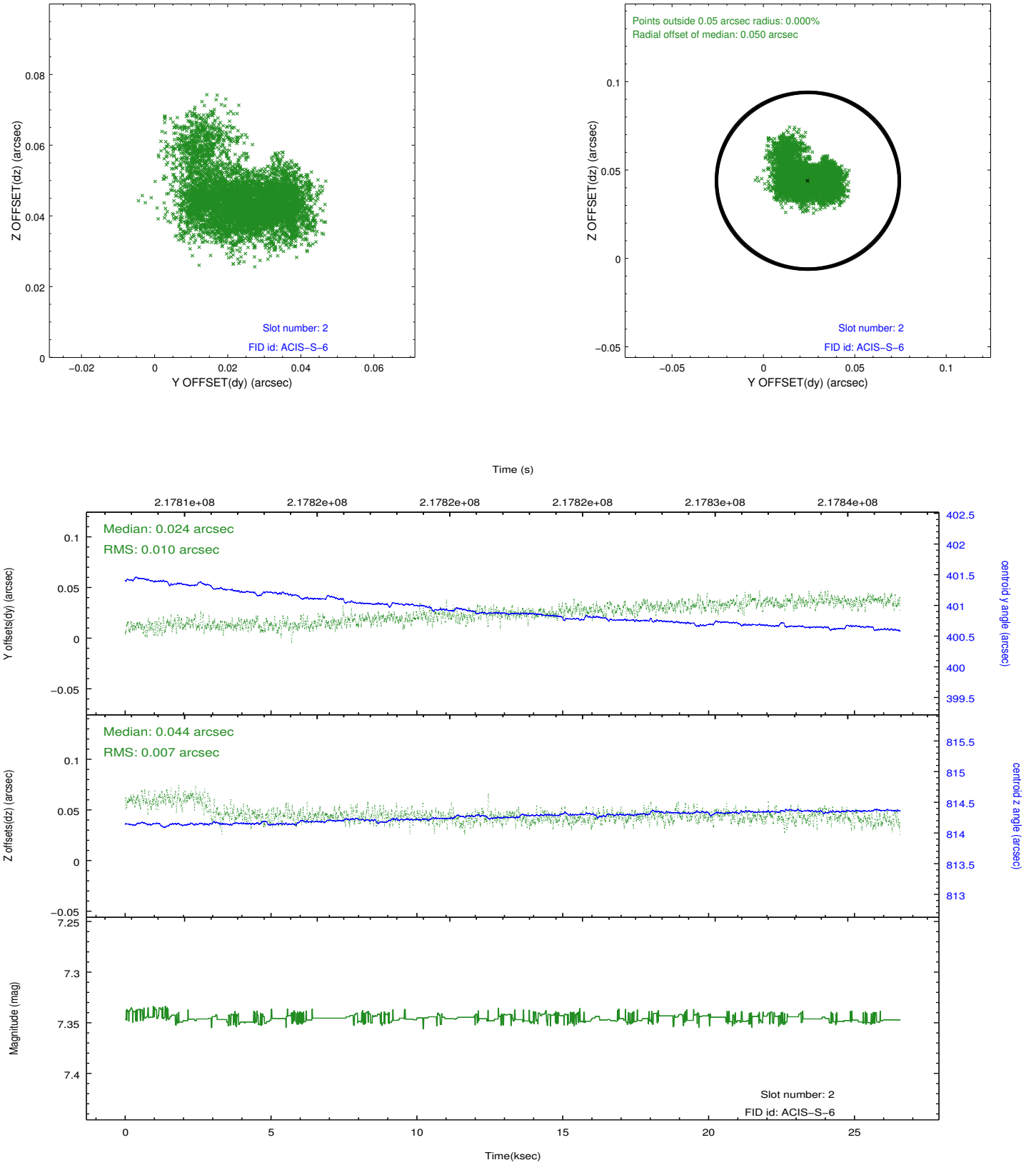
2.5.1 Slot 0



2.5.2 Slot 1



2.5.3 Slot 2



A Summary

A.1 Status

V&V Scientist	Jen Lauer
V&V Date (YYYY-MM-DD)	2013.01.04
V&V Edition	1
V&V Disposition and Status	OK
V&V Charge Time	25.95519

A.2 Comments