

# V&V Reference Report

## L2 ASCDS Version : 7.6.8

Observation 4539 - L2 Version 001  
Chandra X-Ray Center

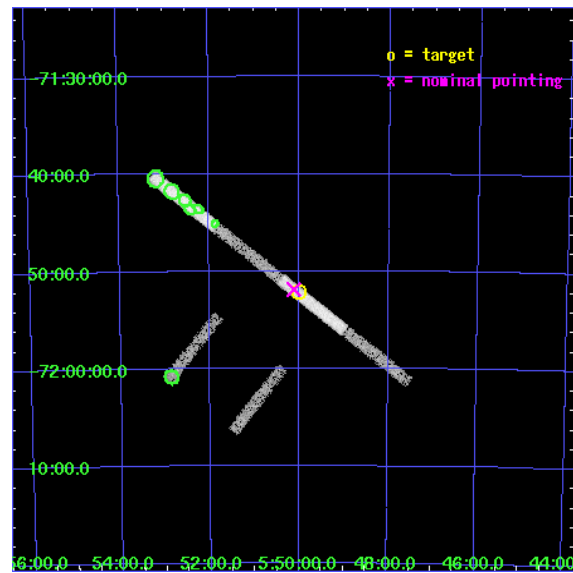
L2 Processing Date : Jun 30 2006

## Contents

<b>1</b>	<b>Front</b>	<b>2</b>
<b>2</b>	<b>OBI</b>	<b>3</b>
2.1	OBI . . . . .	3
2.1.1	Images . . . . .	3
2.1.2	Bias . . . . .	3
2.1.3	Parameters . . . . .	4
2.1.4	Events . . . . .	4
2.2	Compared Parameters . . . . .	5
2.3	Aspect . . . . .	6
2.4	Star Slots . . . . .	9
2.4.1	Slot 3 . . . . .	9
2.4.2	Slot 4 . . . . .	10
2.4.3	Slot 5 . . . . .	11
2.4.4	Slot 6 . . . . .	12
2.4.5	Slot 7 . . . . .	13
2.5	FID Slots . . . . .	14
2.5.1	Slot 0 . . . . .	14
2.5.2	Slot 1 . . . . .	15
2.5.3	Slot 2 . . . . .	16
<b>3</b>	<b>Point Sources</b>	<b>17</b>
<b>A</b>	<b>Summary</b>	<b>18</b>
A.1	Status . . . . .	18
A.2	Comments . . . . .	18

# 1 Front

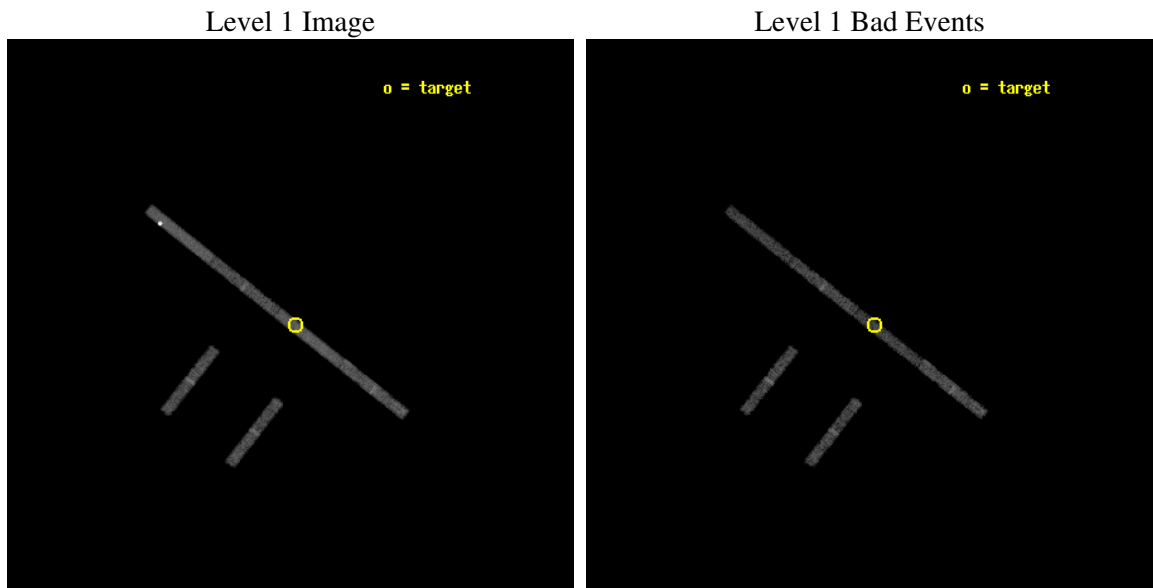
seq_num	300133
obs_id	4539
title	Understanding the nature of supersoft X-ray sources
observer	Dr. Jochen Greiner
object	RXJ 0550.0-7151
dtcycle	0
cycle	P
ra_targ	87.500833
dec_targ	-71.869167
ra_nom	87.528283790351
dec_nom	-71.864611766842
roll_nom	38.288692212416
revision	2
ontime	9762.8998337388
livetime	9222.2145681976
ontime2	9762.8998337388
ontime3	9762.8998337388
ontime5	9762.8998337388
ontime6	9762.8998337388
ontime7	9762.8998337388
ontime8	9762.8998337388
l2events	20703



## 2 OBI

### 2.1 OBI

#### 2.1.1 Images



#### 2.1.2 Bias

Chip 2

Chip 3

Chip 5



Chip 6

Chip 7

Chip 8



### 2.1.3 Parameters

obi_num	0
ascdsver	7.6.8
caldbver	3.2.2
date	2006-06-30T13:05:09
revision	2

sched_exp_time	9999.003000
ontime	9764.5665432513
ontime2	9764.5665432513
ontime3	9765.3075832427
ontime5	9764.5665432513
ontime6	9765.3075832427
ontime7	9764.5665432513
ontime8	9765.3075832427
l1events	87075

### 2.1.4 Events

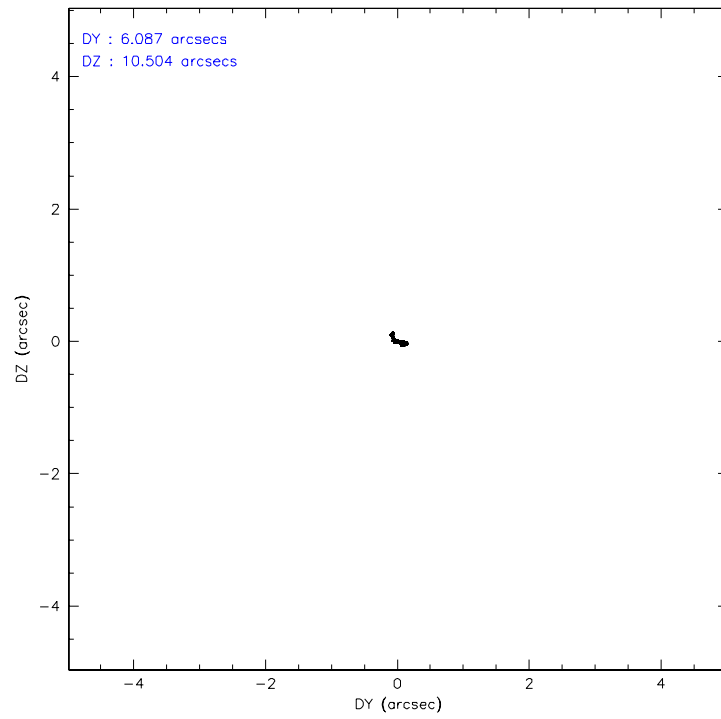
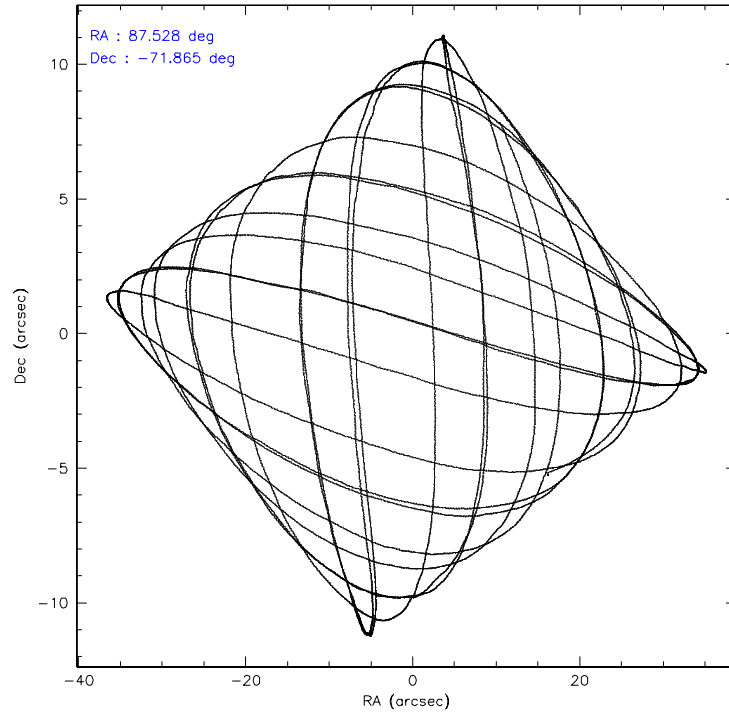
	ccd 2	ccd 3	ccd 5	ccd 6	ccd 7	ccd 8
level 1 events	10309	9981	27739	10747	14519	13780
rejected events	8843	8597	6859	9015	6825	10939
rejected %	85%	86%	24%	83%	47%	79%

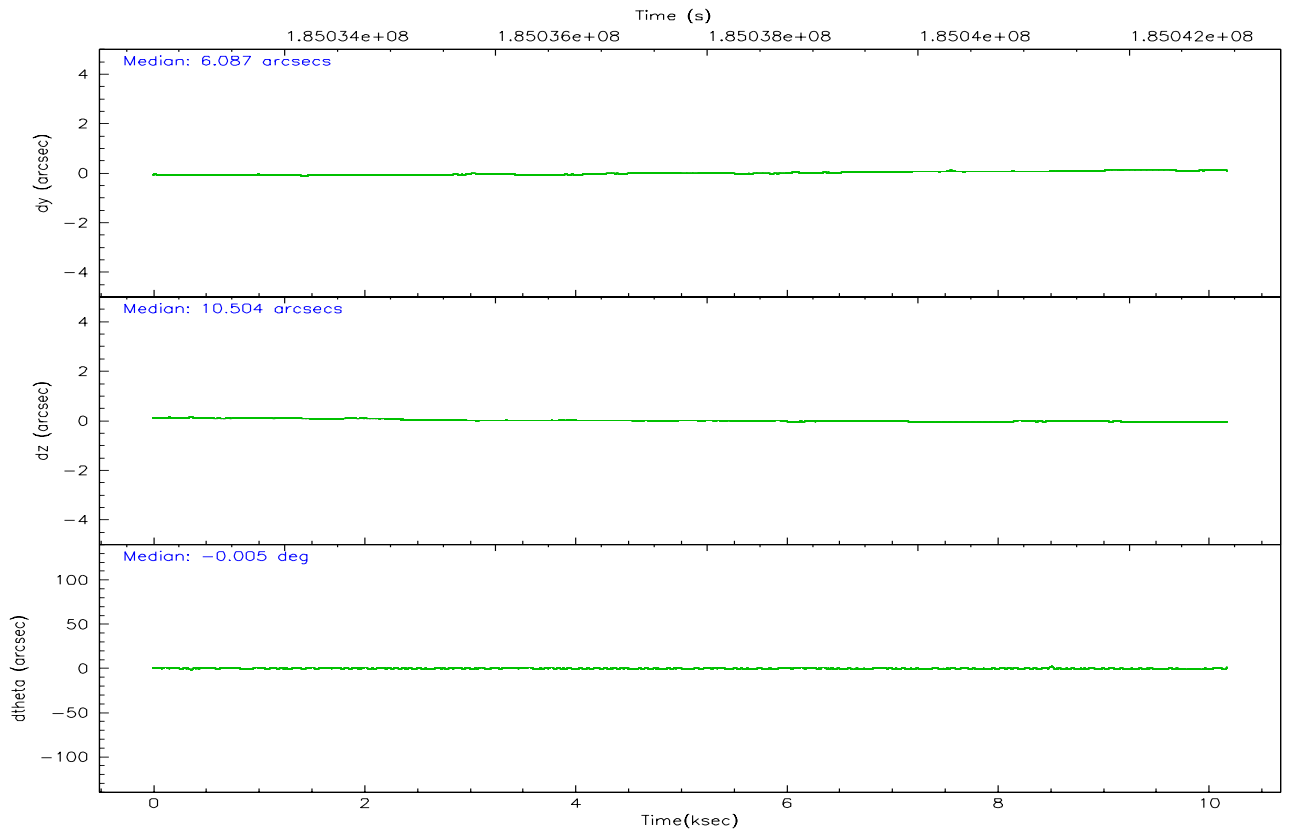
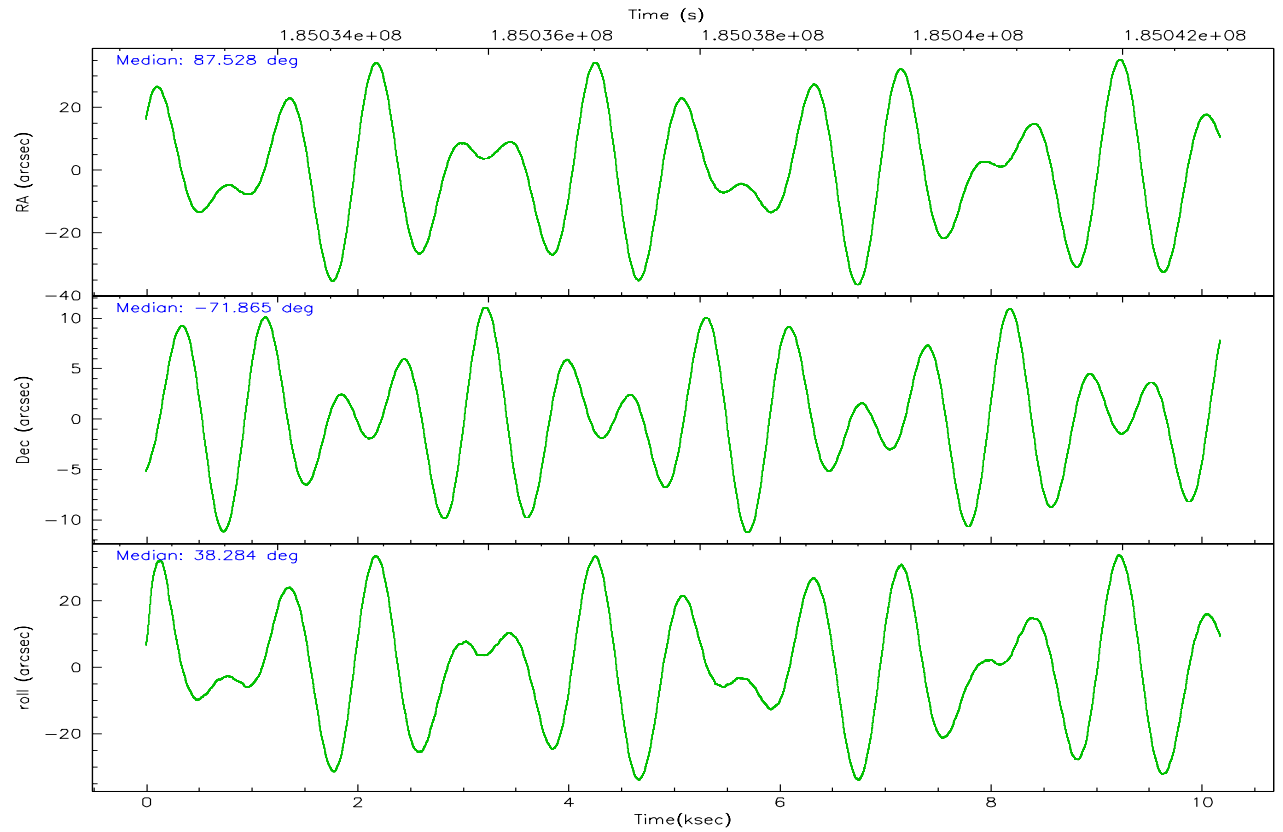
	ccd 2	ccd 3	ccd 5	ccd 6	ccd 7	ccd 8
grade 0 events	692	678	12270	894	663	1081
	6%	6%	44%	8%	4%	7%
grade 1 events	5	3	18	4	6	2
	0%	0%	0%	0%	0%	0%
grade 2 events	250	237	3466	303	1675	531
	2%	2%	12%	2%	11%	3%
grade 3 events	177	181	335	170	568	265
	1%	1%	1%	1%	3%	1%
grade 4 events	186	140	564	155	530	240
	1%	1%	2%	1%	3%	1%
grade 5 events	321	293	617	319	850	425
	3%	2%	2%	2%	5%	3%
grade 6 events	161	148	4248	211	4261	724
	1%	1%	15%	1%	29%	5%
grade 7 events	8517	8301	6221	8691	5966	10512
	82%	83%	22%	80%	41%	76%

## 2.2 Compared Parameters

Parameter	Planned	Actual	Parameter	Planned	Actual
Instrument	ACIS	ACIS	Obspar format version number	6	6
Detector	ACIS-235678	ACIS-235678	Obspar file type	PREDICTED	ACTUAL
Grating	NONE	NONE	Obspar update status	NONE	UPDATED
Data mode	FAINT	FAINT	On-chip summing requested	N	N
Observation mode	POINTING	POINTING	Subarray requested	1/8	1/8
Pointing RA	87.496943	87.52828379035068	Subarray start row	0	449
Pointing Dec	-71.890037	-71.86461176684244	Subarray row count	1024	128
Pointing Roll	38.102280	38.28869221241609	Alternating exposures requested	N	N
SIM focus pos (mm)	-0.684267	-0.6828225247311905	Primary exposure time	0.000000	0.7
SIM defocus (mm)	0	0.001444936568705701			
SIM translation stage pos (mm)	-190.132523	-190.1400660498719			
SIM translation stage offset (mm)	0	0.00754346686406393			
Observation start time	185032925.184000	185032489.33765			
Observation start date	2003-11-12T14:01:01	2003-11-12T13:54:49			
Observation end time	185042924.184000	185043238.51312			
Observation end date	2003-11-12T16:47:40	2003-11-12T16:53:58			
Read mode	TIMED	TIMED			

## 2.3 Aspect





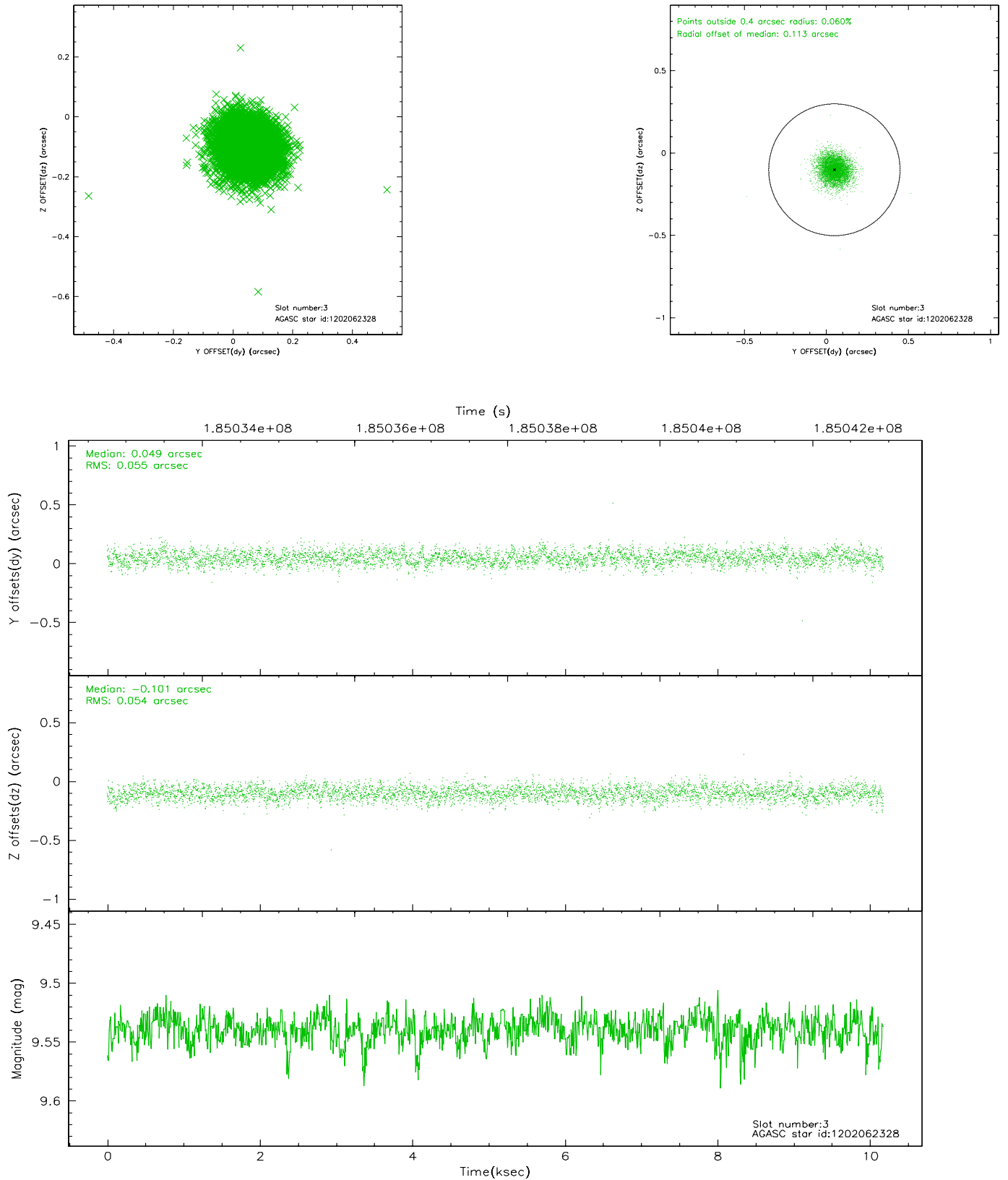
### Slot Statistics

slot	status	id	mag	n_pts	med_dy	med_dz	dr1	dr2	ra	dec	mean_y	mean_z
0	FID	ACIS-S-2	7.10	2482	-0.052	0.009	0.007	0.012	0.000000	0.000000	-758.85	-1731.78
1	FID	ACIS-S-4	7.21	2483	0.031	0.023	0.005	0.009	0.000000	0.000000	2154.25	176.22
2	FID	ACIS-S-5	7.23	2483	-0.010	-0.023	0.006	0.011	0.000000	0.000000	-1811.00	170.38
3	GUIDE	1202062328	9.54	4960	0.049	-0.101	0.081	0.130	87.078008	-71.975897	-558.57	43.54
4	GUIDE	1202066656	9.91	4966	0.063	0.001	0.114	0.184	88.773544	-72.273960	239.36	-1962.37
5	GUIDE	1202068104	9.82	4963	-0.005	0.070	0.104	0.168	86.710730	-72.350514	-1701.31	-779.59
6	GUIDE	1202072464	9.44	4964	0.004	0.104	0.090	0.148	86.698095	-71.603515	-81.60	1367.18
7	GUIDE	1202070752	6.40	4964	-0.111	-0.073	0.052	0.087	86.950556	-72.702251	-2265.92	-1941.81

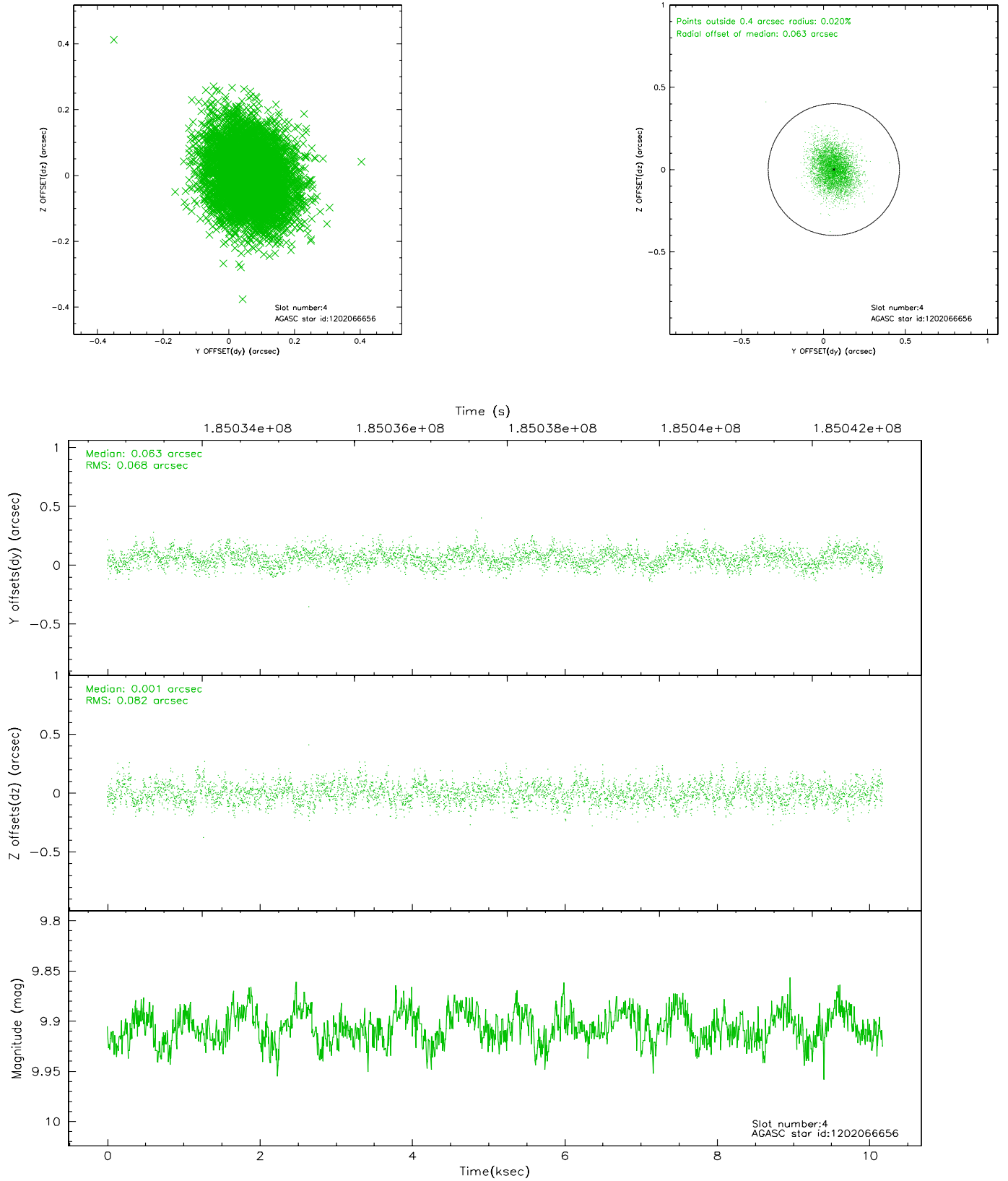


## 2.4 Star Slots

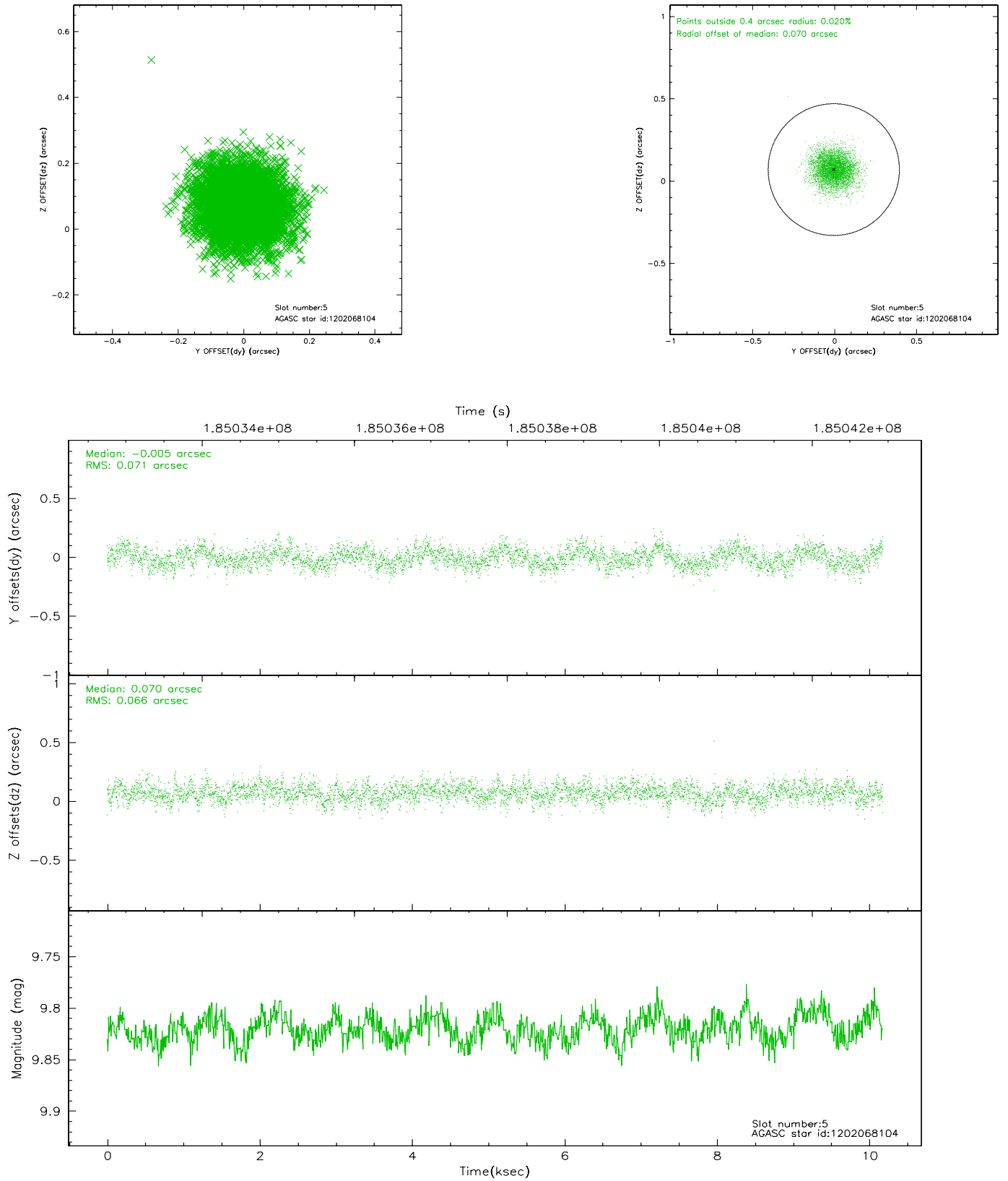
### 2.4.1 Slot 3



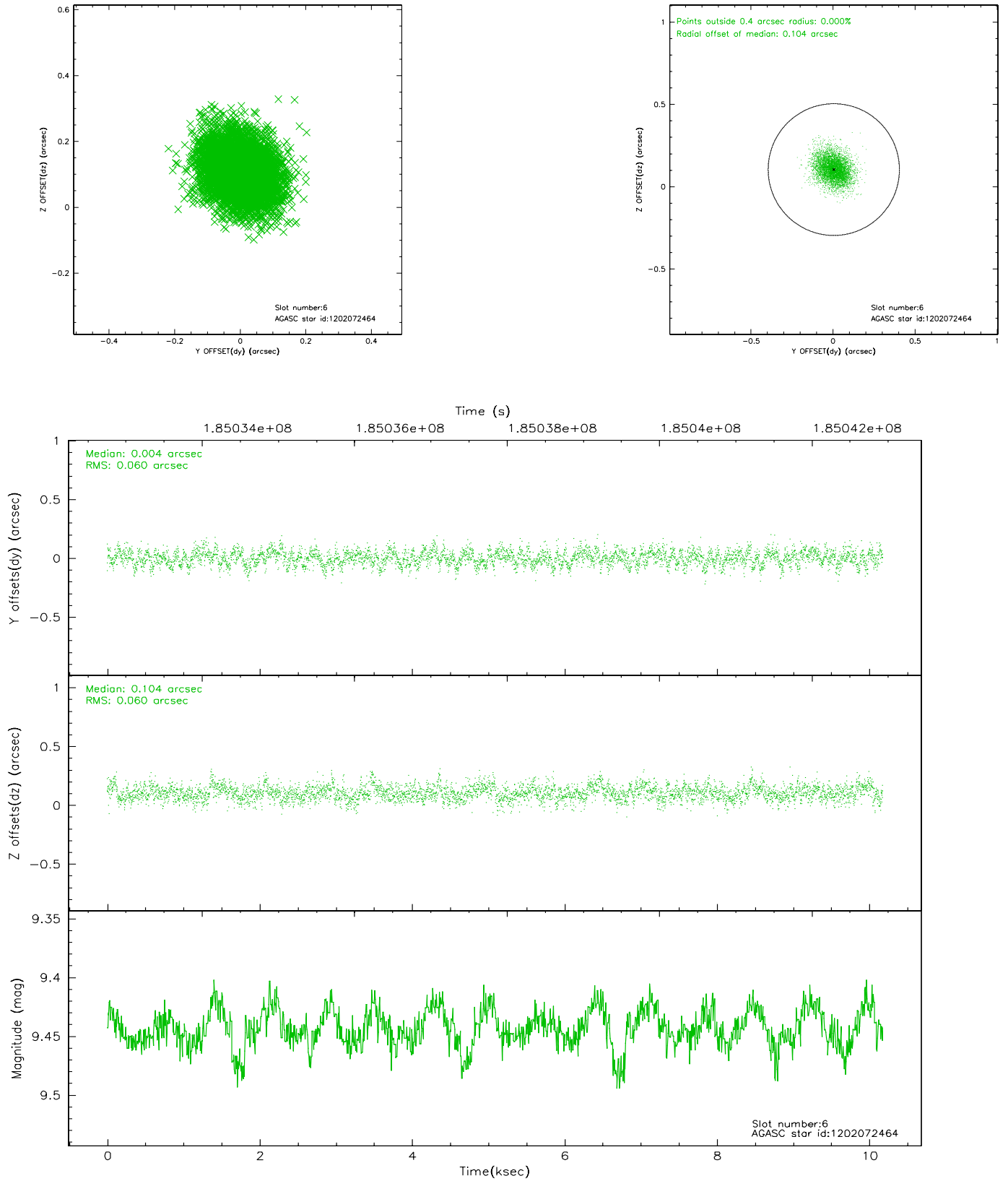
## 2.4.2 Slot 4



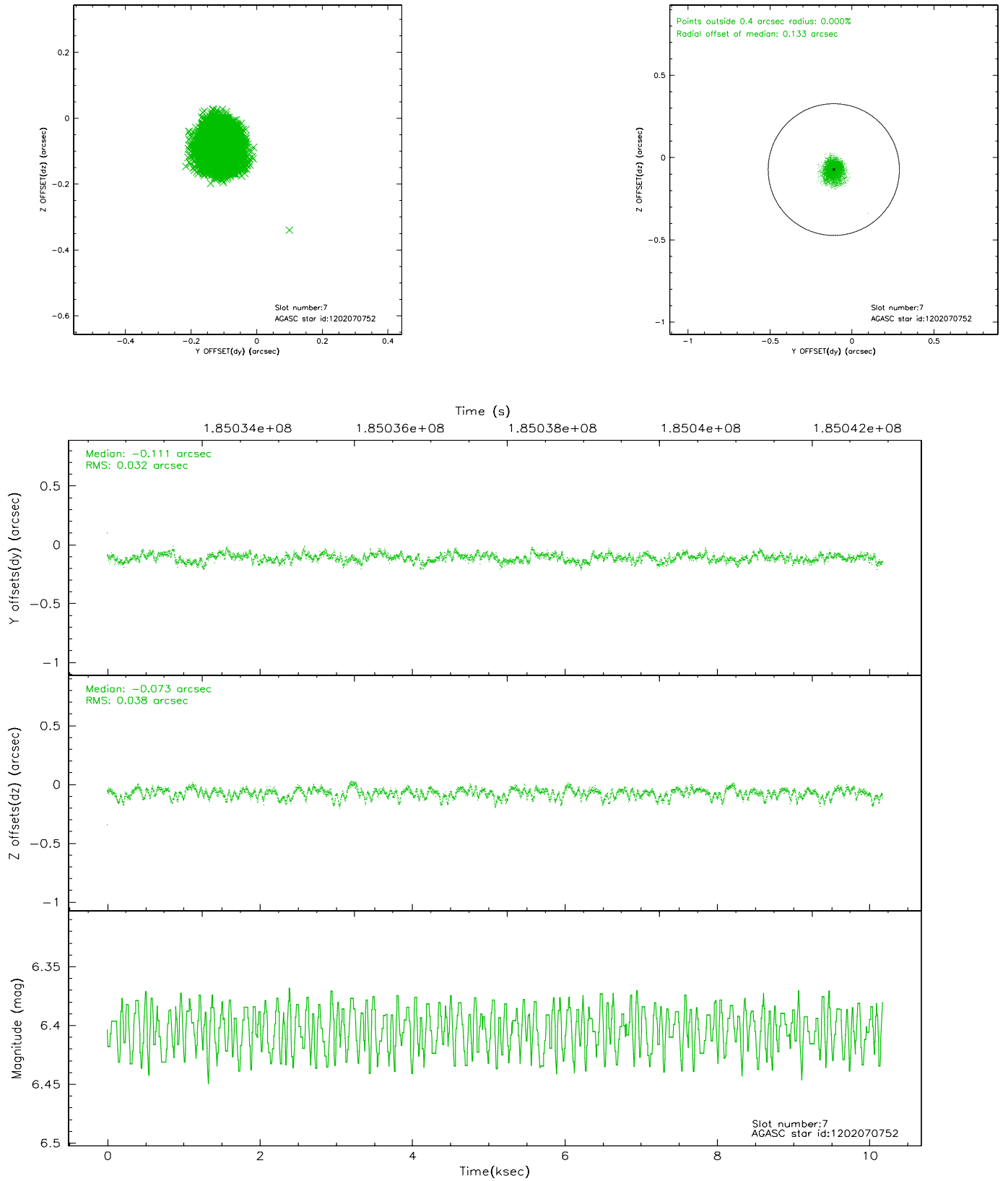
### 2.4.3 Slot 5



## 2.4.4 Slot 6

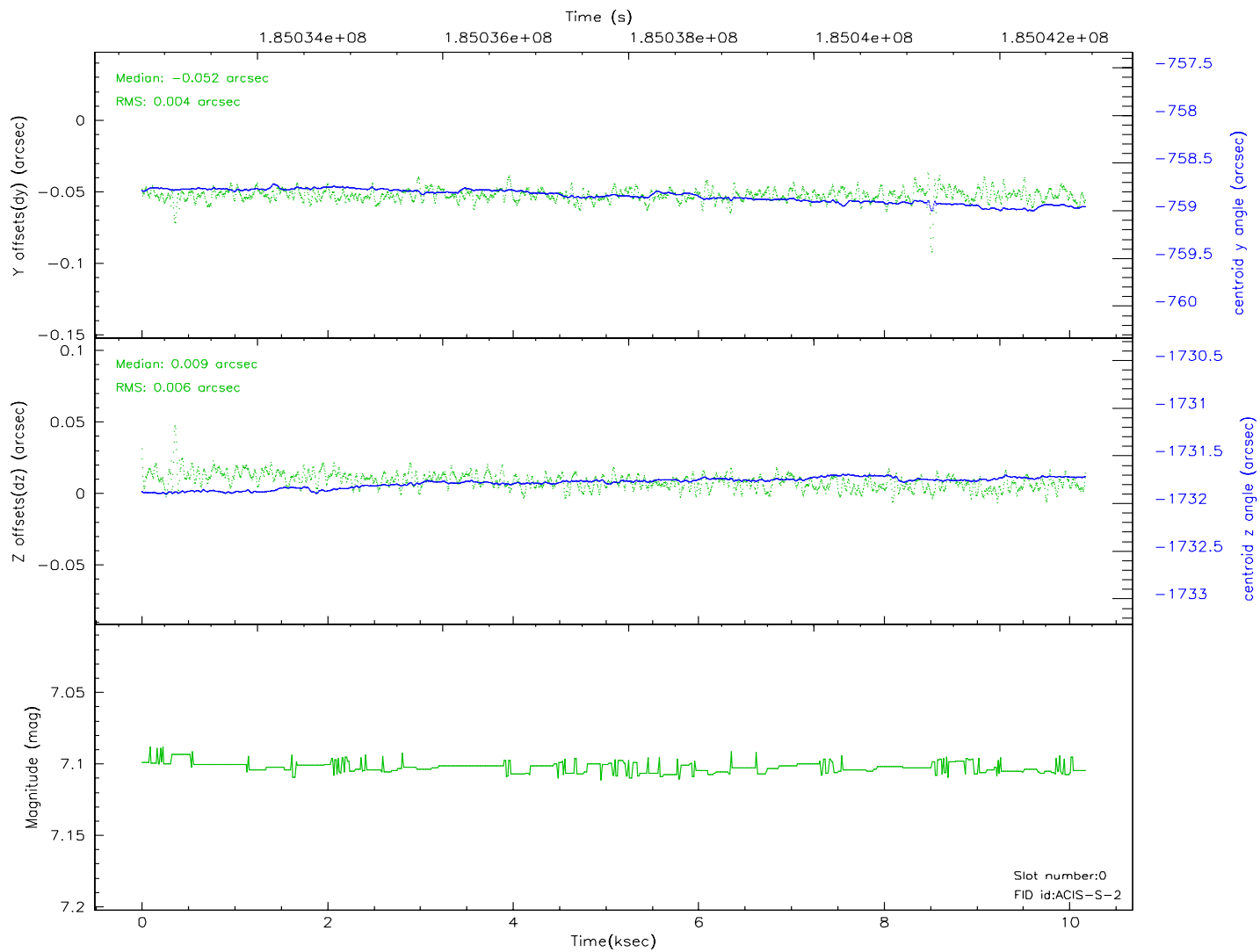
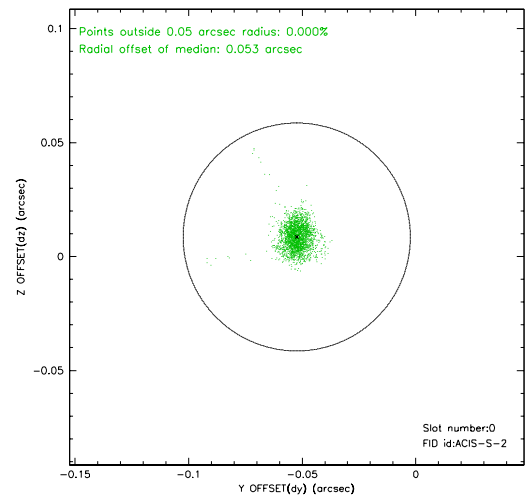
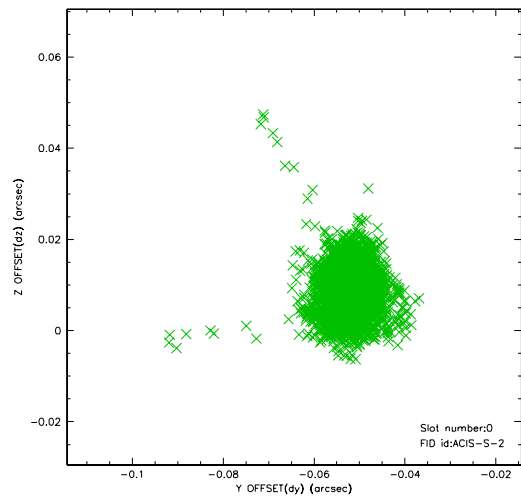


## 2.4.5 Slot 7

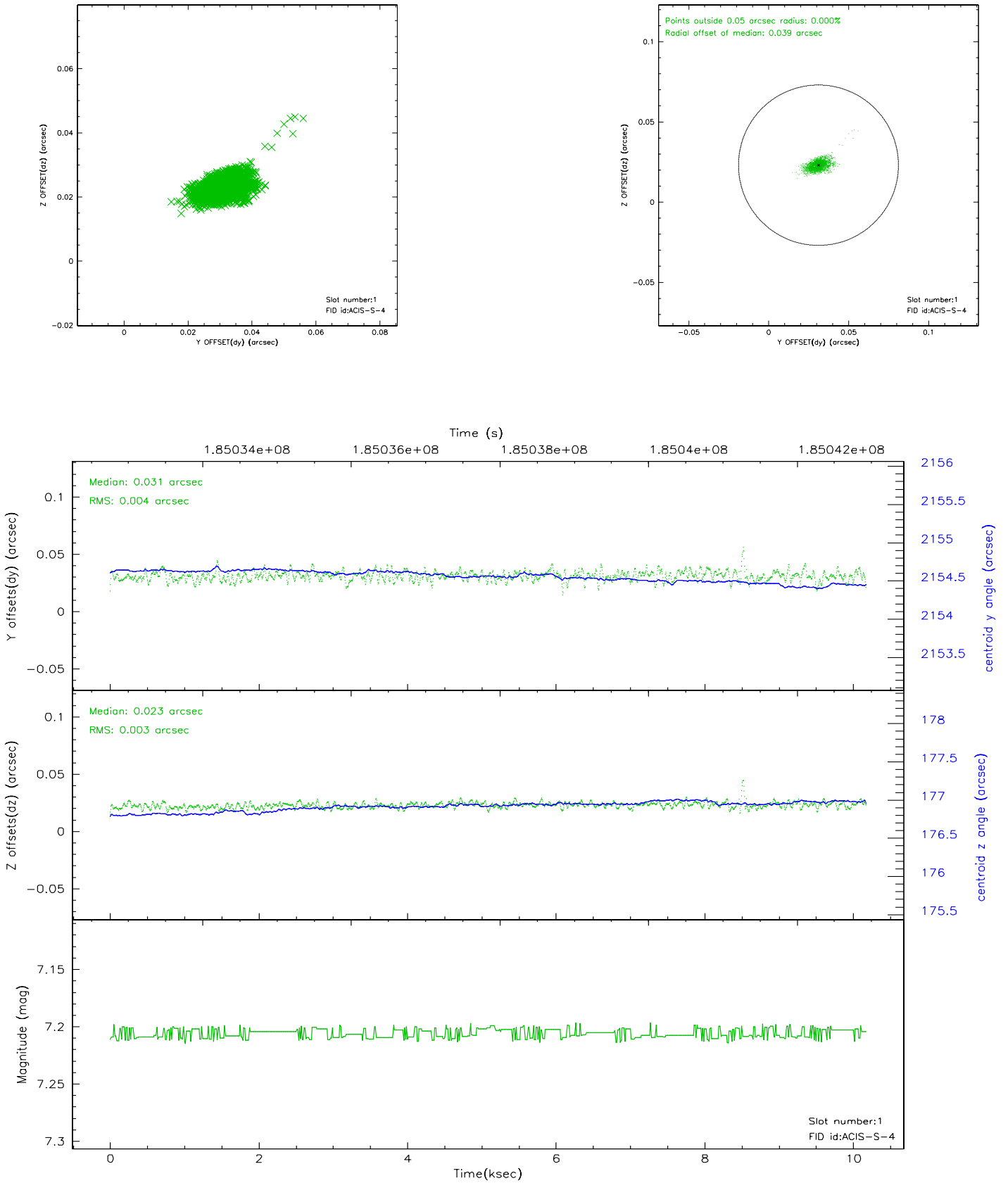


## 2.5 FID Slots

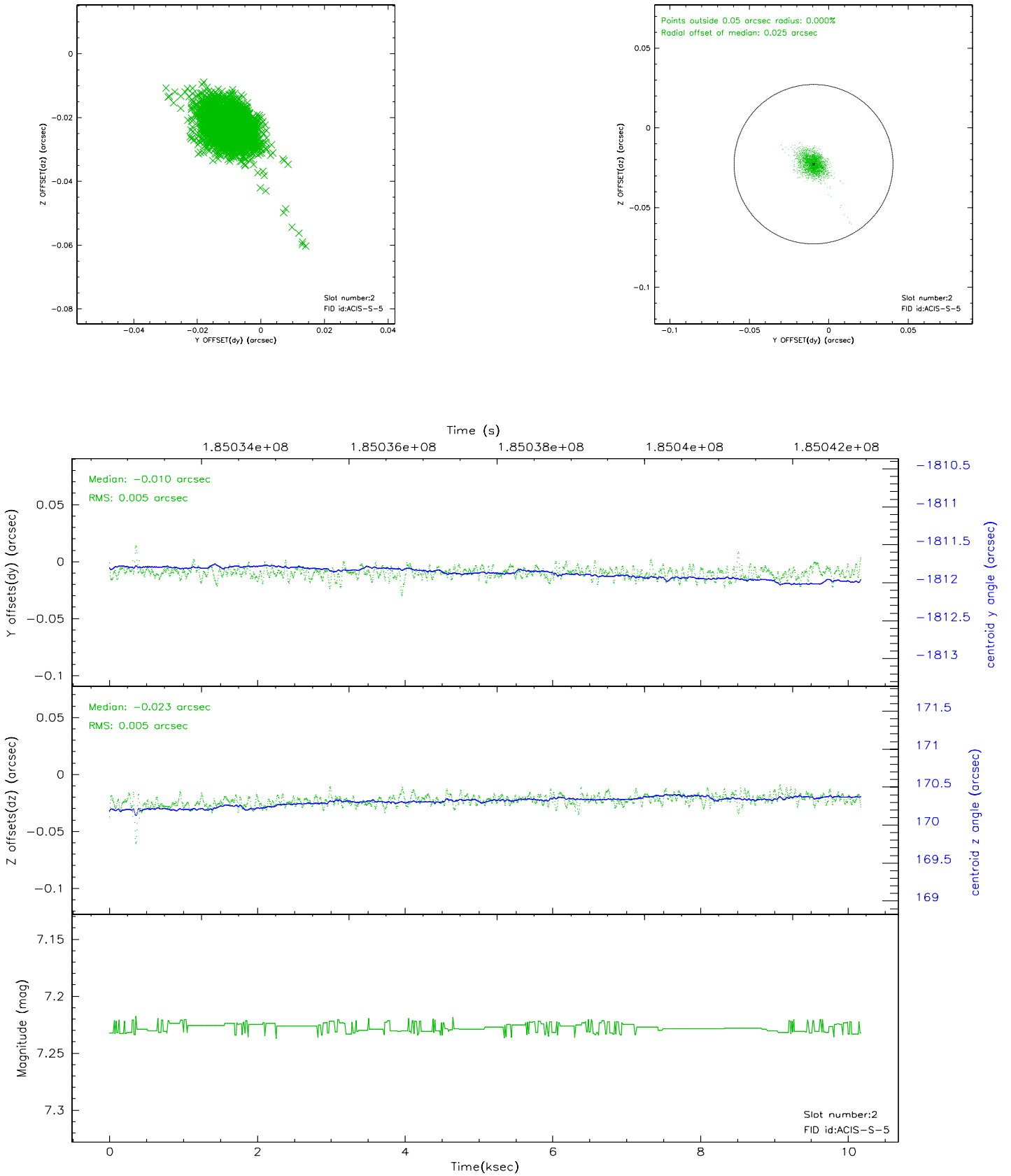
### 2.5.1 Slot 0



## 2.5.2 Slot 1

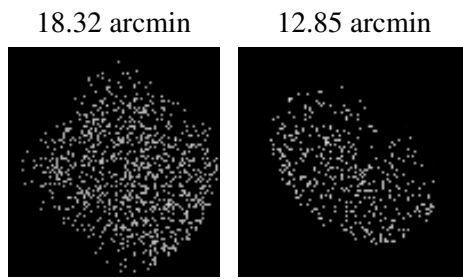


### 2.5.3 Slot 2





### 3 Point Sources



## A Summary

### A.1 Status

V&V Scientist	Beth Sundheim
V&V Date (YYYY-MM-DD)	2006.06.30
V&V Edition	1
V&V Disposition and Status	OK
V&V Charge Time	9.763

### A.2 Comments