

V&V Reference Report

L2 ASCDS Version : 7.6.7

Observation 4536 - L2 Version 002
Chandra X-Ray Center

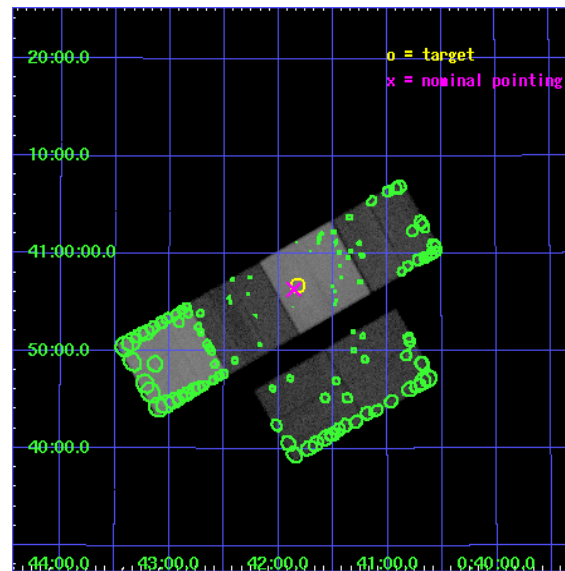
L2 Processing Date: Feb 25 2006

Contents

| | | |
|----------|-------------------------------|-----------|
| 1 | Front | 2 |
| 2 | OBI | 3 |
| 2.1 | OBI | 3 |
| 2.1.1 | Images | 3 |
| 2.1.2 | Bias | 3 |
| 2.1.3 | Parameters | 4 |
| 2.1.4 | Events | 4 |
| 2.2 | Compared Parameters | 5 |
| 2.3 | Aspect | 6 |
| 2.4 | Star Slots | 9 |
| 2.4.1 | Slot 3 | 9 |
| 2.4.2 | Slot 4 | 10 |
| 2.4.3 | Slot 5 | 11 |
| 2.4.4 | Slot 6 | 12 |
| 2.4.5 | Slot 7 | 13 |
| 2.5 | FID Slots | 14 |
| 2.5.1 | Slot 0 | 14 |
| 2.5.2 | Slot 1 | 15 |
| 2.5.3 | Slot 2 | 16 |
| 3 | Point Sources | 17 |
| A | Summary | 18 |
| A.1 | Status | 18 |
| A.2 | Comments | 18 |

1 Front

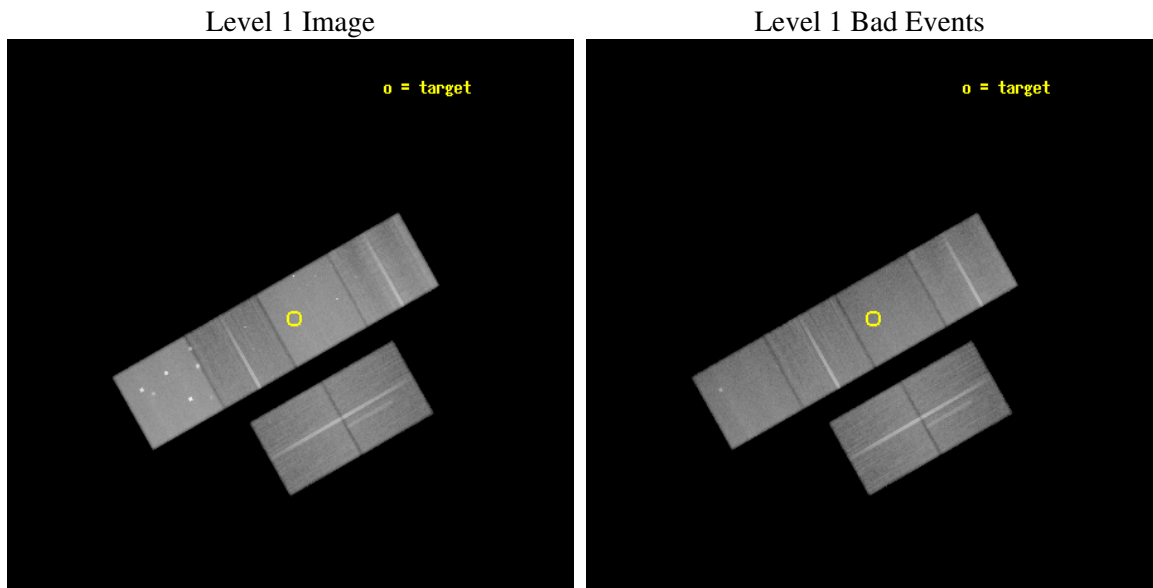
| | |
|----------|---|
| seq_num | 300130 |
| obs_id | 4536 |
| title | Understanding the nature of supersoft X-ray sources |
| observer | Dr. Jochen Greiner |
| object | M31-0041.7+4056 |
| dtcycle | 0 |
| cycle | P |
| ra_targ | 10.455 |
| dec_targ | 40.945278 |
| ra_nom | 10.464832922441 |
| dec_nom | 40.939115176148 |
| roll_nom | 330.42158230887 |
| revision | 2 |
| ontime | 54940.79979533 |
| livetime | 54245.106306943 |
| ontime2 | 54937.558825046 |
| ontime3 | 54940.79979533 |
| ontime5 | 54940.79979533 |
| ontime6 | 54940.79979533 |
| ontime7 | 54940.79979533 |
| ontime8 | 54937.558835059 |
| l2events | 720262 |



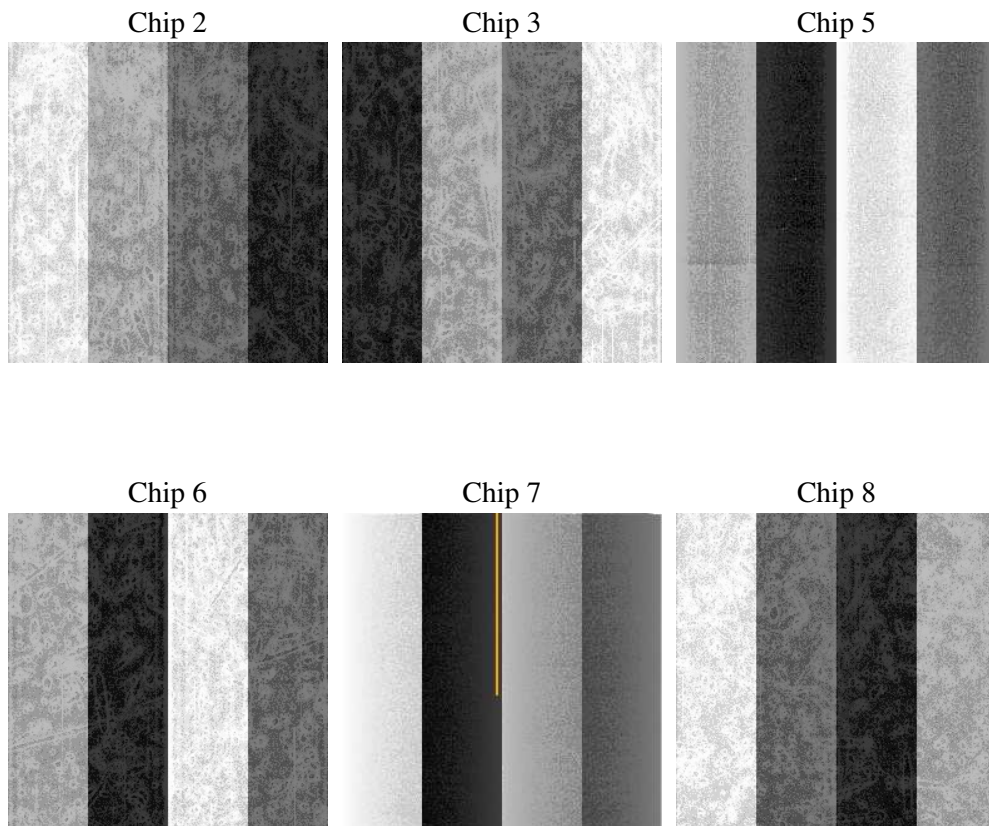
2 OBI

2.1 OBI

2.1.1 Images



2.1.2 Bias



2.1.3 Parameters

| | |
|----------|---------------------|
| obi_num | 0 |
| ascdsver | 7.6.7 |
| caldsver | 3.2.1 |
| date | 2006-02-25T15:40:12 |
| revision | 2 |

| | |
|----------------|-----------------|
| sched_exp_time | 54800.000000 |
| ontime | 56902.244228065 |
| ontime2 | 56899.003257781 |
| ontime3 | 56902.244247973 |
| ontime5 | 56902.244228065 |
| ontime6 | 56902.244247973 |
| ontime7 | 56902.244228065 |
| ontime8 | 56899.003287703 |
| l1events | 3115139 |

2.1.4 Events

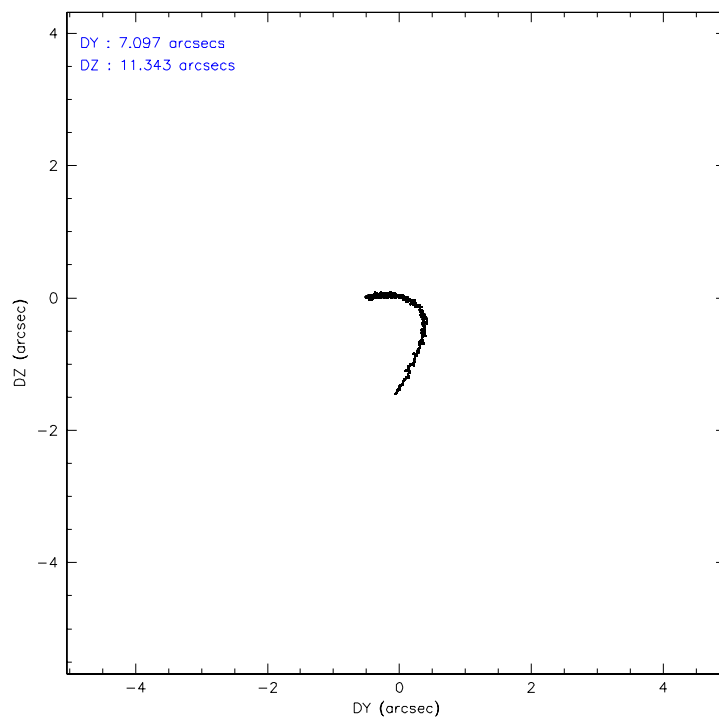
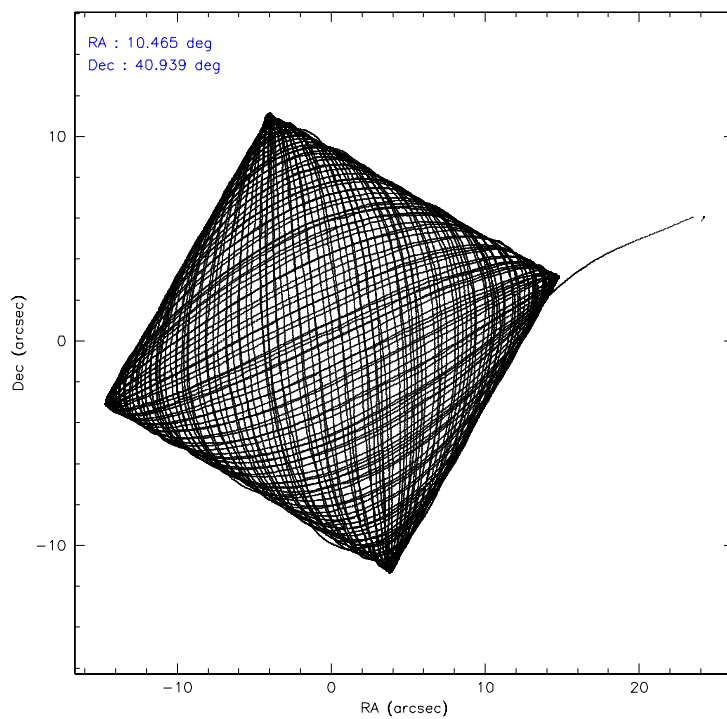
| | ccd 2 | ccd 3 | ccd 5 | ccd 6 | ccd 7 | ccd 8 |
|-----------------|--------|--------|--------|--------|--------|--------|
| level 1 events | 434673 | 405958 | 689322 | 430710 | 610974 | 543502 |
| rejected events | 382600 | 356102 | 367001 | 375786 | 364468 | 420865 |
| rejected % | 88% | 87% | 53% | 87% | 59% | 77% |

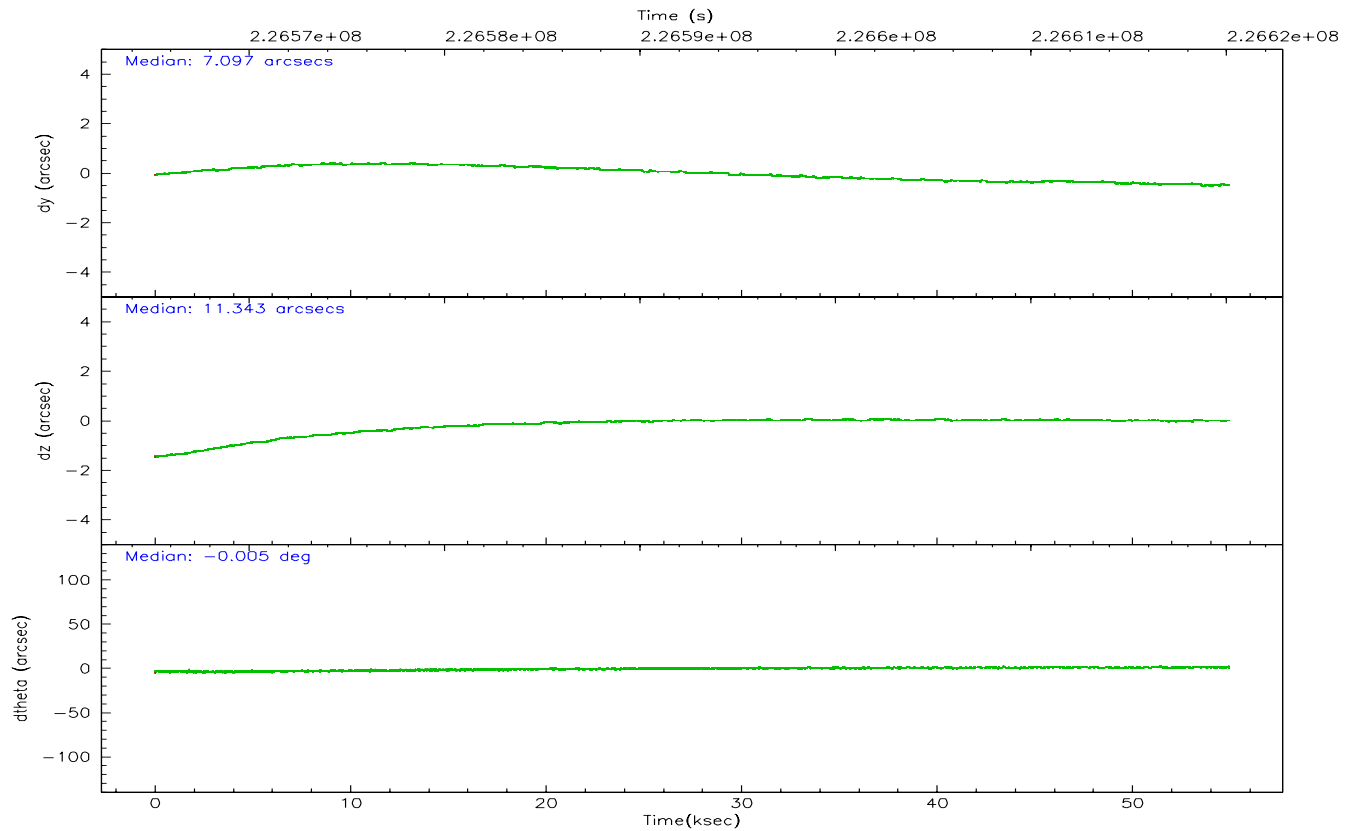
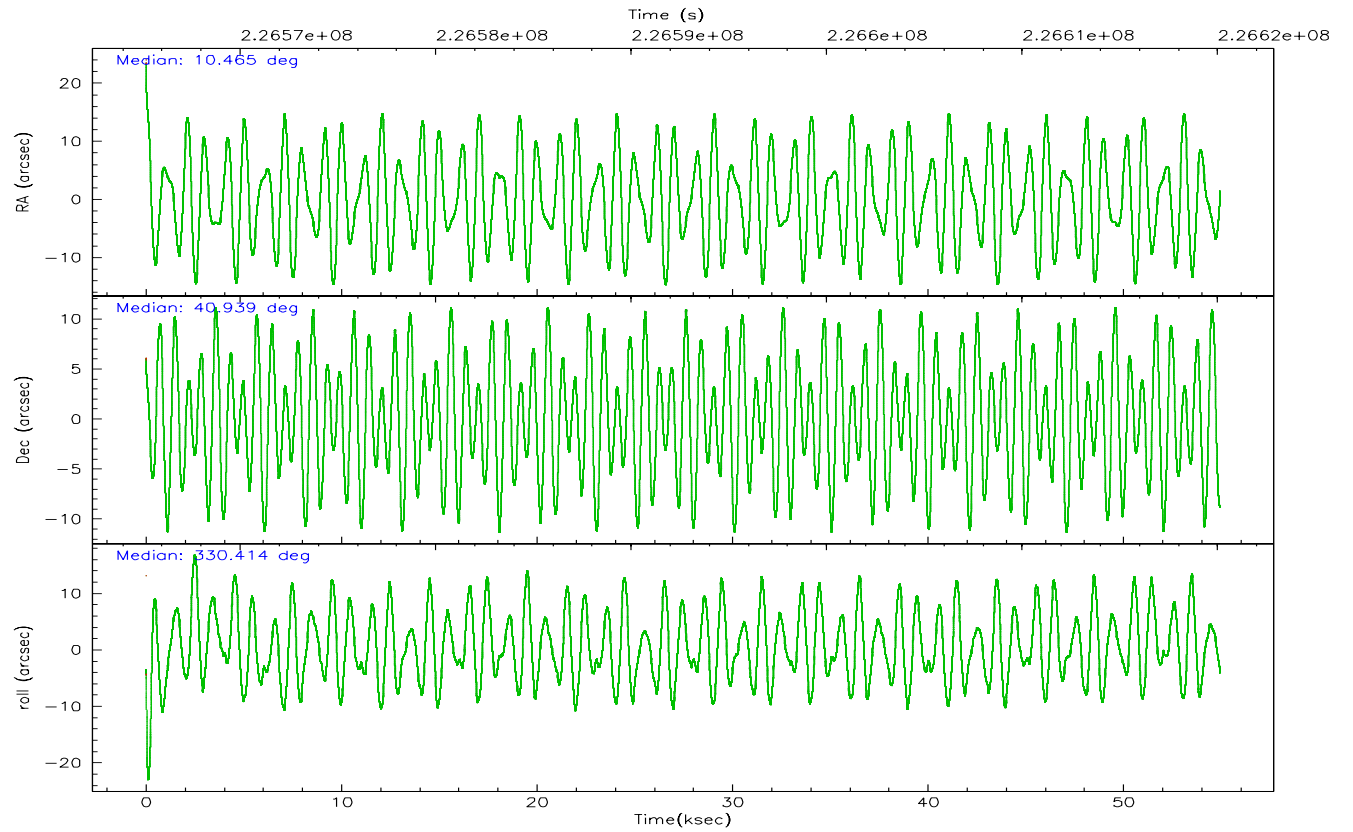
| | ccd 2 | ccd 3 | ccd 5 | ccd 6 | ccd 7 | ccd 8 |
|----------------|--------|--------|--------|--------|--------|--------|
| grade 0 events | 24575 | 23255 | 46285 | 24647 | 17081 | 41890 |
| | 5% | 5% | 6% | 5% | 2% | 7% |
| grade 1 events | 269 | 240 | 1852 | 234 | 348 | 352 |
| | 0% | 0% | 0% | 0% | 0% | 0% |
| grade 2 events | 11136 | 9878 | 98447 | 11697 | 62257 | 26807 |
| | 2% | 2% | 14% | 2% | 10% | 4% |
| grade 3 events | 4703 | 4796 | 7735 | 4948 | 13266 | 13622 |
| | 1% | 1% | 1% | 1% | 2% | 2% |
| grade 4 events | 4750 | 4780 | 7435 | 4898 | 13263 | 12699 |
| | 1% | 1% | 1% | 1% | 2% | 2% |
| grade 5 events | 16627 | 18905 | 30922 | 19763 | 38408 | 26098 |
| | 3% | 4% | 4% | 4% | 6% | 4% |
| grade 6 events | 8604 | 8807 | 173067 | 10547 | 148258 | 31630 |
| | 1% | 2% | 25% | 2% | 24% | 5% |
| grade 7 events | 364009 | 335297 | 323579 | 353976 | 318093 | 390404 |
| | 83% | 82% | 46% | 82% | 52% | 71% |

2.2 Compared Parameters

| Parameter | Planned | Actual | Parameter | Planned | Actual |
|-----------------------------------|---------------------|----------------------|---------------------------------|-----------|---------|
| Instrument | ACIS | ACIS | Obspar format version number | 6 | 6 |
| Detector | ACIS-235678 | ACIS-235678 | Obspar file type | PREDICTED | ACTUAL |
| Grating | NONE | NONE | Obspar update status | NONE | UPDATED |
| Data mode | FAINT | FAINT | On-chip summing requested | N | N |
| Observation mode | POINTING | POINTING | Subarray requested | NONE | NONE |
| Pointing RA | 10.428817 | 10.46483292244082 | Alternating exposures requested | N | N |
| Pointing Dec | 40.938523 | 40.93911517614814 | Primary exposure time | 0.000000 | 3.2 |
| Pointing Roll | 330.288549 | 330.4215823088741 | | | |
| SIM focus pos (mm) | -0.684267 | -0.6828225247311905 | | | |
| SIM defocus (mm) | 0 | 0.001444936568705701 | | | |
| SIM translation stage pos (mm) | -190.132523 | -190.1425803651734 | | | |
| SIM translation stage offset (mm) | 0 | 0.01005778216563158 | | | |
| Observation start time | 226565323.184000 | 226563220.80431 | | | |
| Observation start date | 2005-03-07T06:47:39 | 2005-03-07T06:13:40 | | | |
| Observation end time | 226620123.184000 | 226620964.18193 | | | |
| Observation end date | 2005-03-07T22:00:59 | 2005-03-07T22:16:04 | | | |
| Read mode | TIMED | TIMED | | | |

2.3 Aspect



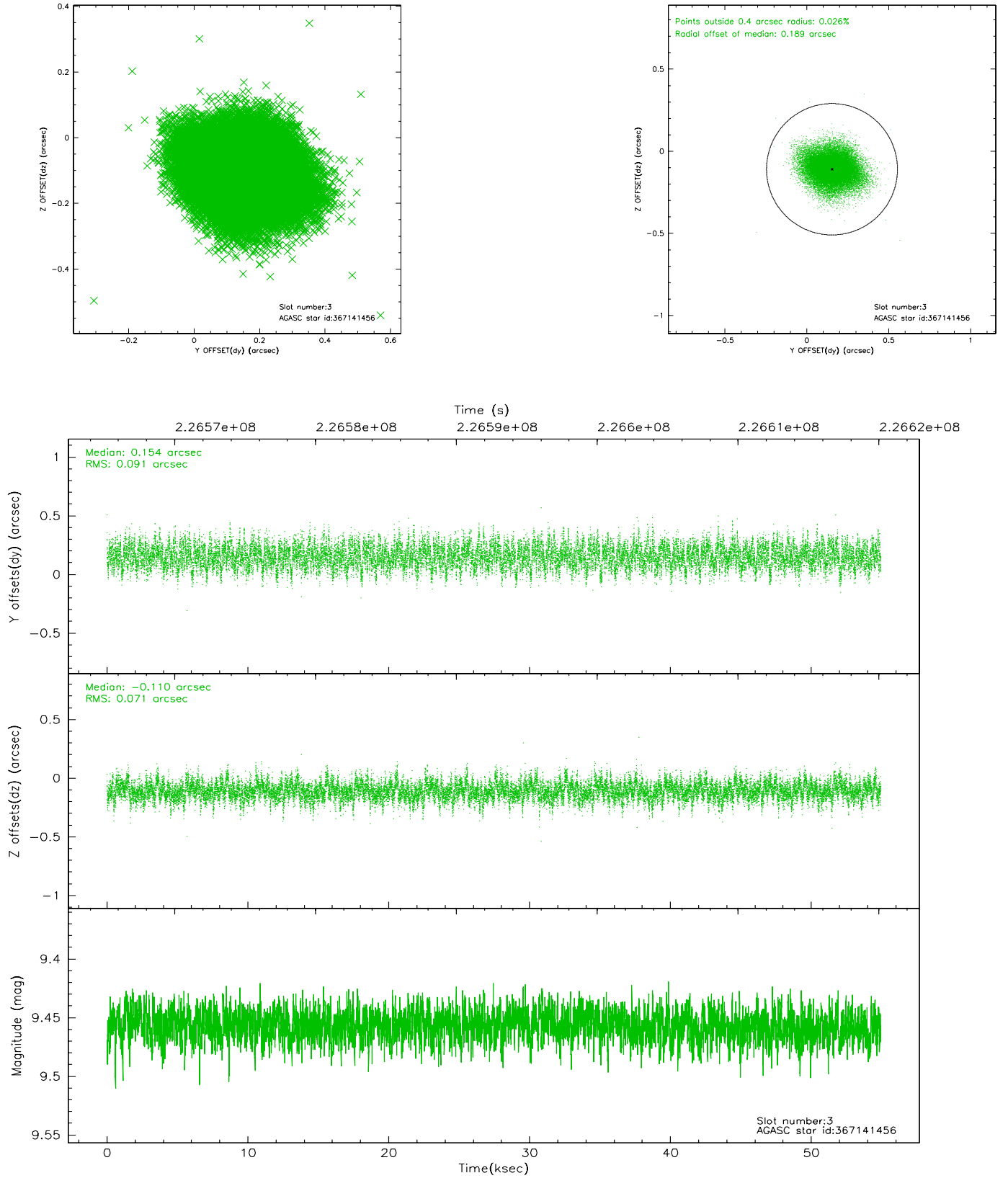


Slot Statistics

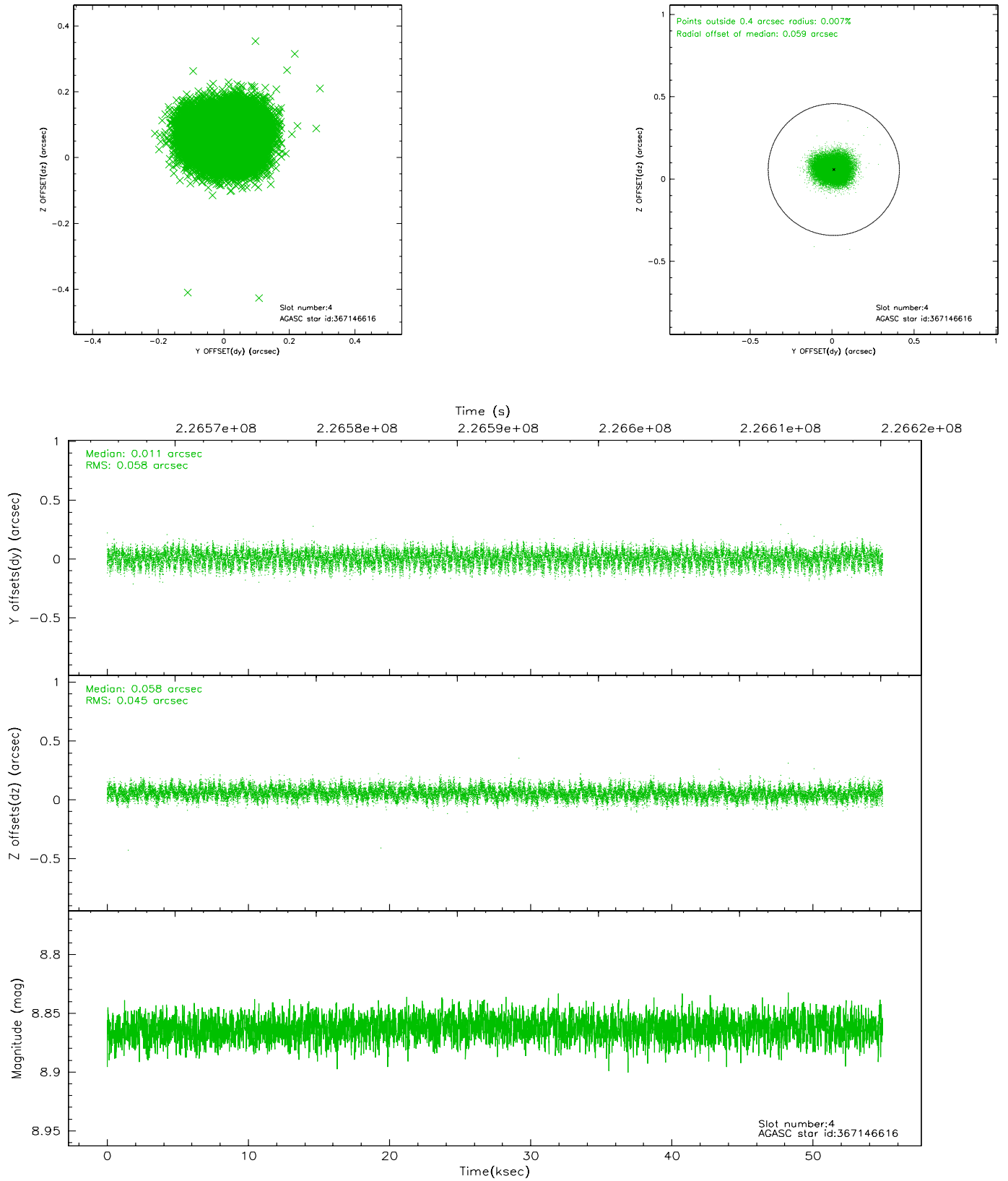
| slot | status | id | mag | n_pts | med_dy | med_dz | dr1 | dr2 | ra | dec | mean_y | mean_z |
|------|--------|-----------|------|-------|--------|--------|-------|-------|-----------|-----------|----------|----------|
| 0 | FID | ACIS-S-1 | 7.18 | 13401 | 0.022 | -0.054 | 0.011 | 0.042 | 0.000000 | 0.000000 | 936.21 | -1728.05 |
| 1 | FID | ACIS-S-5 | 7.23 | 13400 | -0.024 | 0.019 | 0.012 | 0.019 | 0.000000 | 0.000000 | -1812.83 | 169.63 |
| 2 | FID | ACIS-S-6 | 7.34 | 13401 | -0.021 | 0.046 | 0.011 | 0.042 | 0.000000 | 0.000000 | 401.78 | 813.56 |
| 3 | GUIDE | 367141456 | 9.46 | 26769 | 0.154 | -0.110 | 0.123 | 0.199 | 10.733182 | 40.145955 | 2141.75 | -2061.81 |
| 4 | GUIDE | 367146616 | 8.86 | 26789 | 0.011 | 0.058 | 0.079 | 0.125 | 11.418645 | 41.190163 | 1872.62 | 2129.24 |
| 5 | GUIDE | 367148872 | 7.22 | 26736 | 0.048 | -0.003 | 0.058 | 0.091 | 10.505940 | 40.688258 | 629.98 | -678.34 |
| 6 | GUIDE | 367144424 | 8.66 | 26795 | -0.161 | -0.011 | 0.066 | 0.106 | 10.464515 | 40.309136 | 1208.60 | -1919.33 |
| 7 | GUIDE | 367139648 | 8.21 | 26790 | -0.050 | 0.067 | 0.062 | 0.100 | 11.021290 | 40.433909 | 2308.33 | -768.22 |

2.4 Star Slots

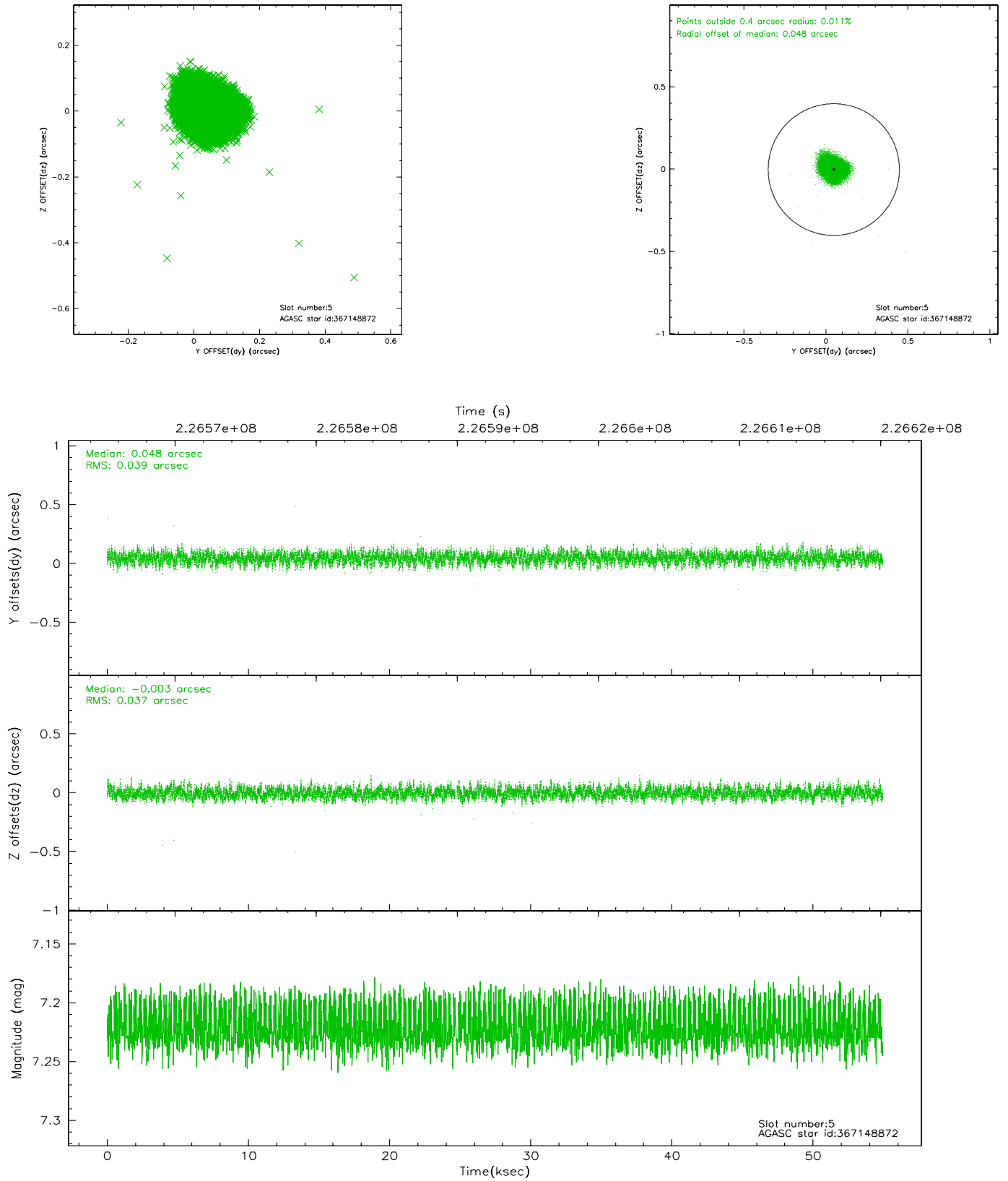
2.4.1 Slot 3



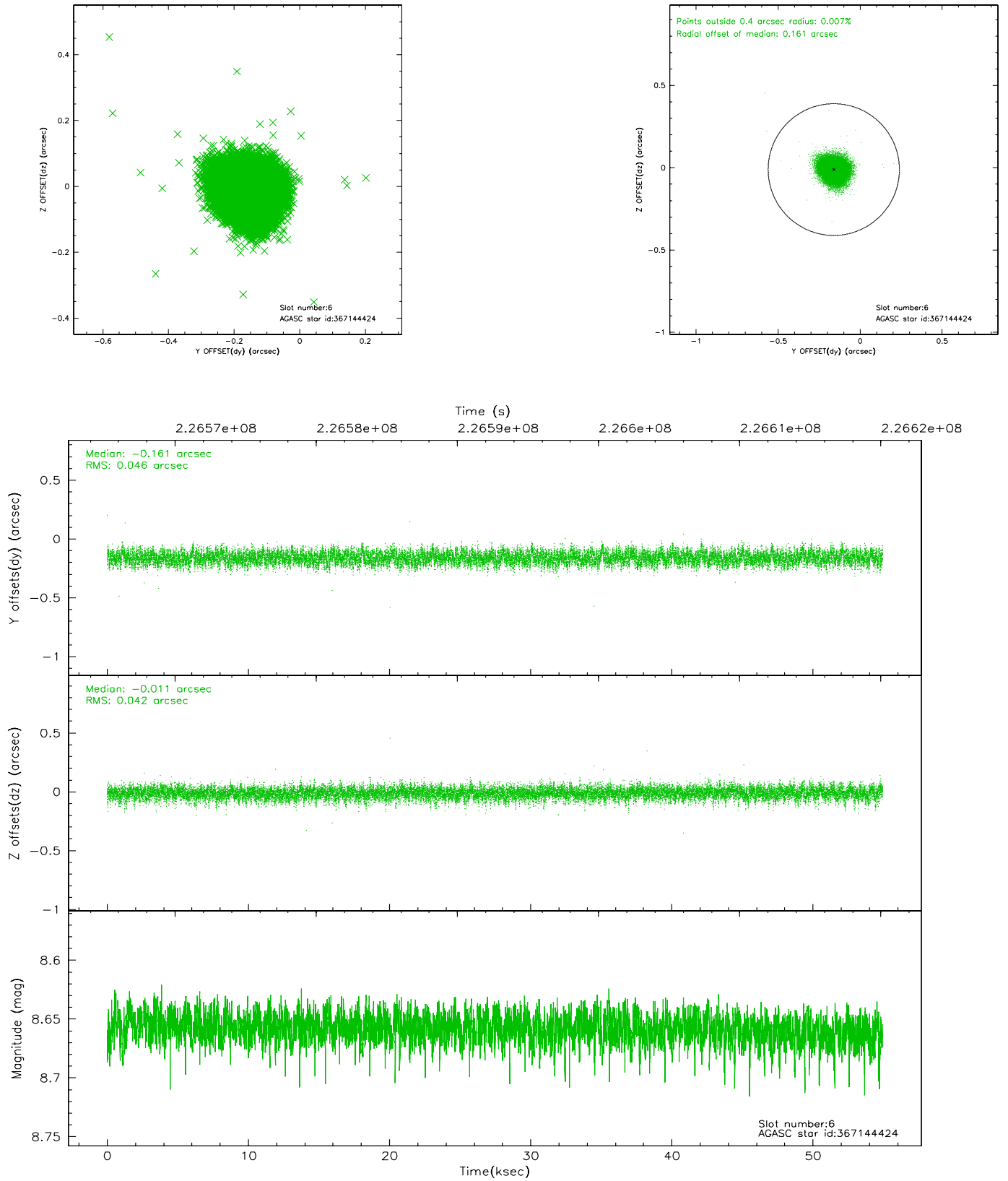
2.4.2 Slot 4



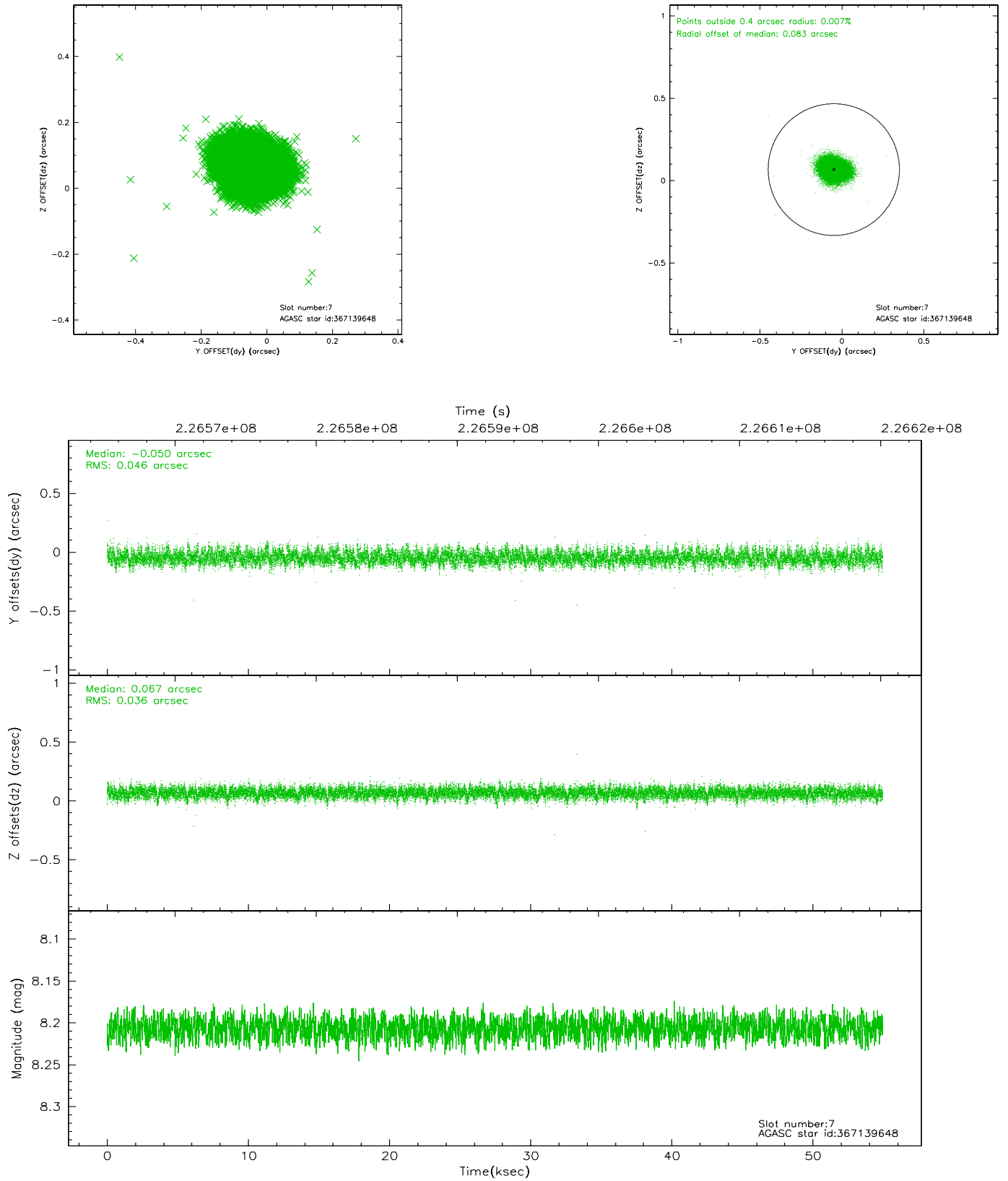
2.4.3 Slot 5



2.4.4 Slot 6

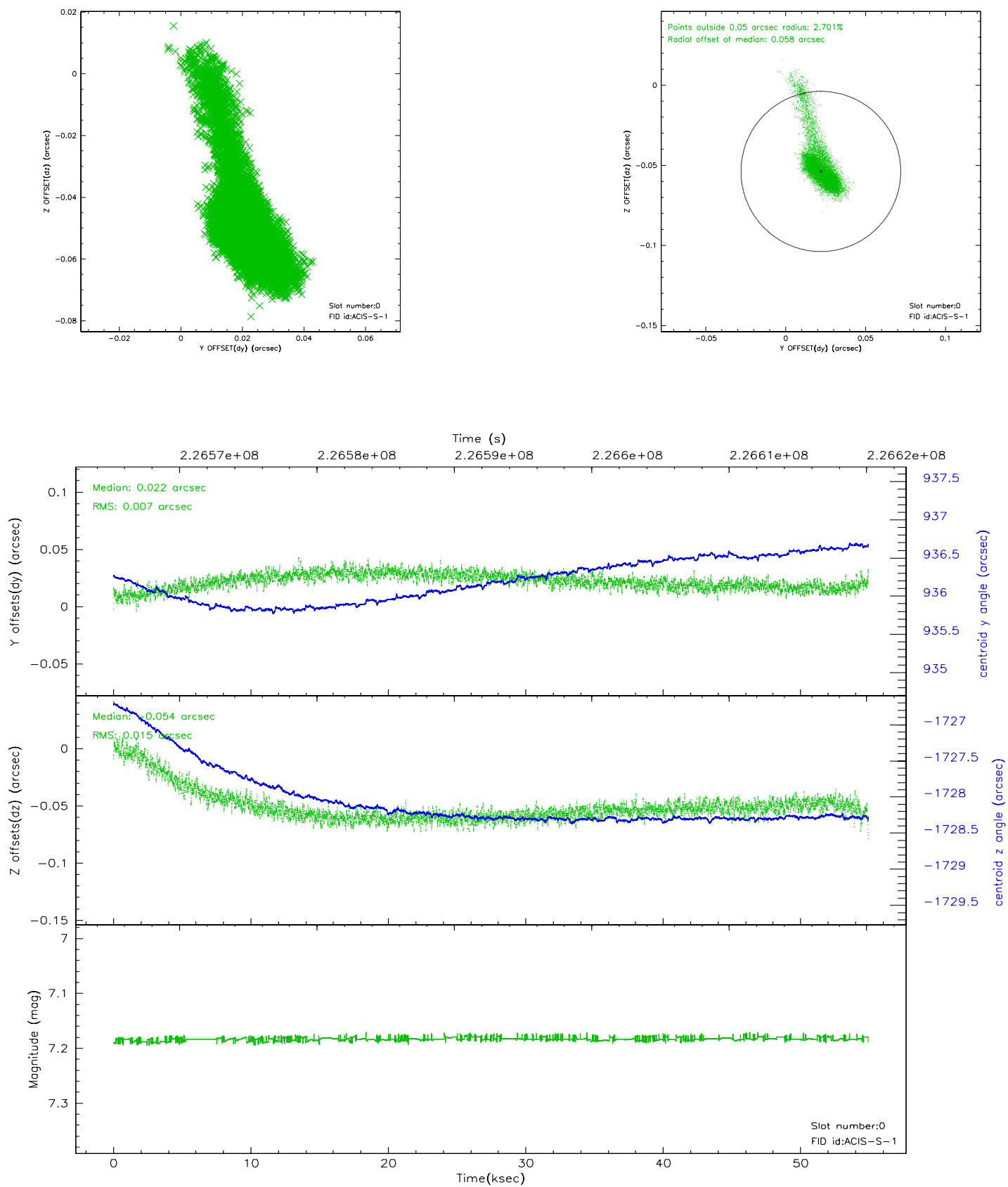


2.4.5 Slot 7

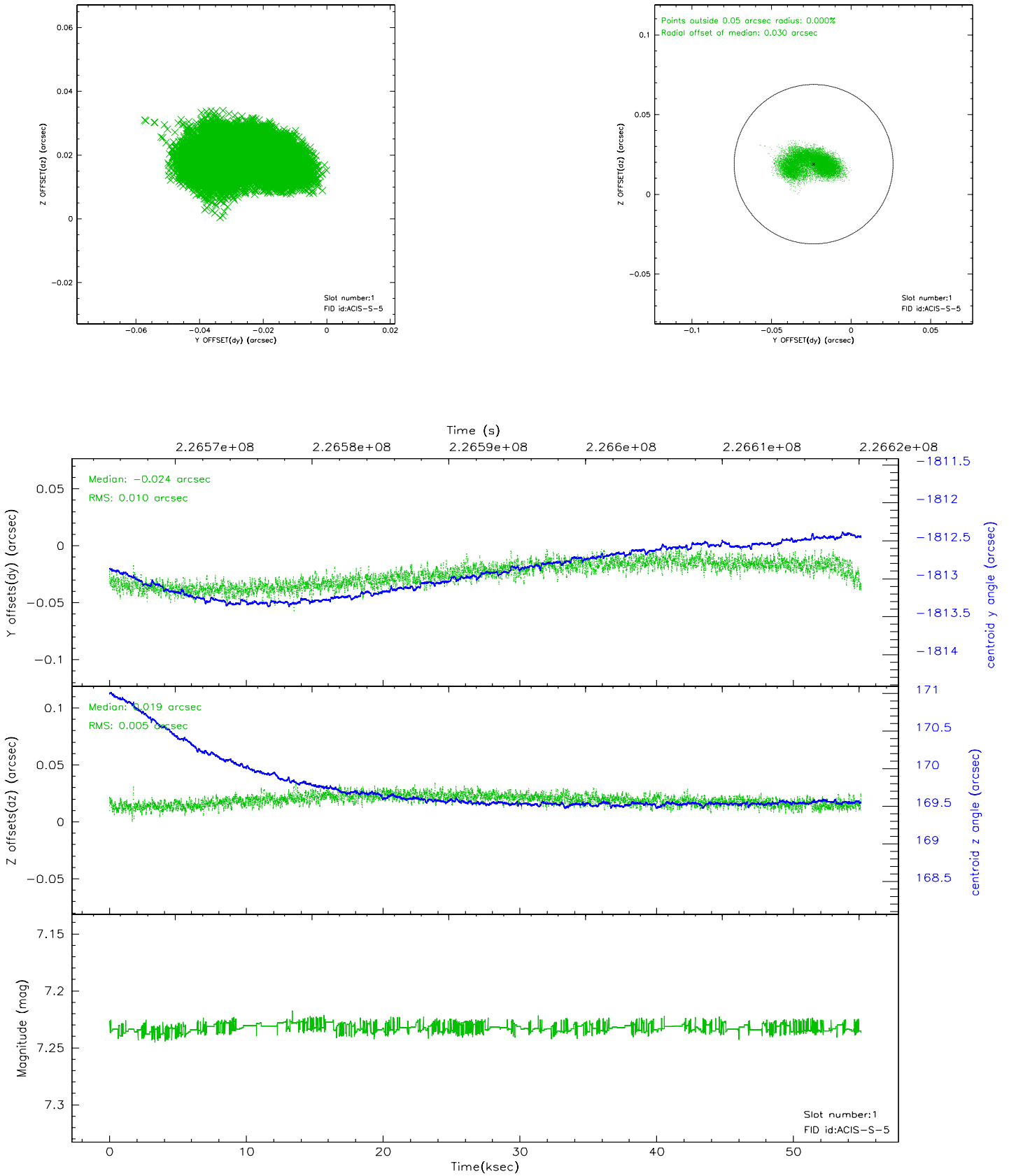


2.5 FID Slots

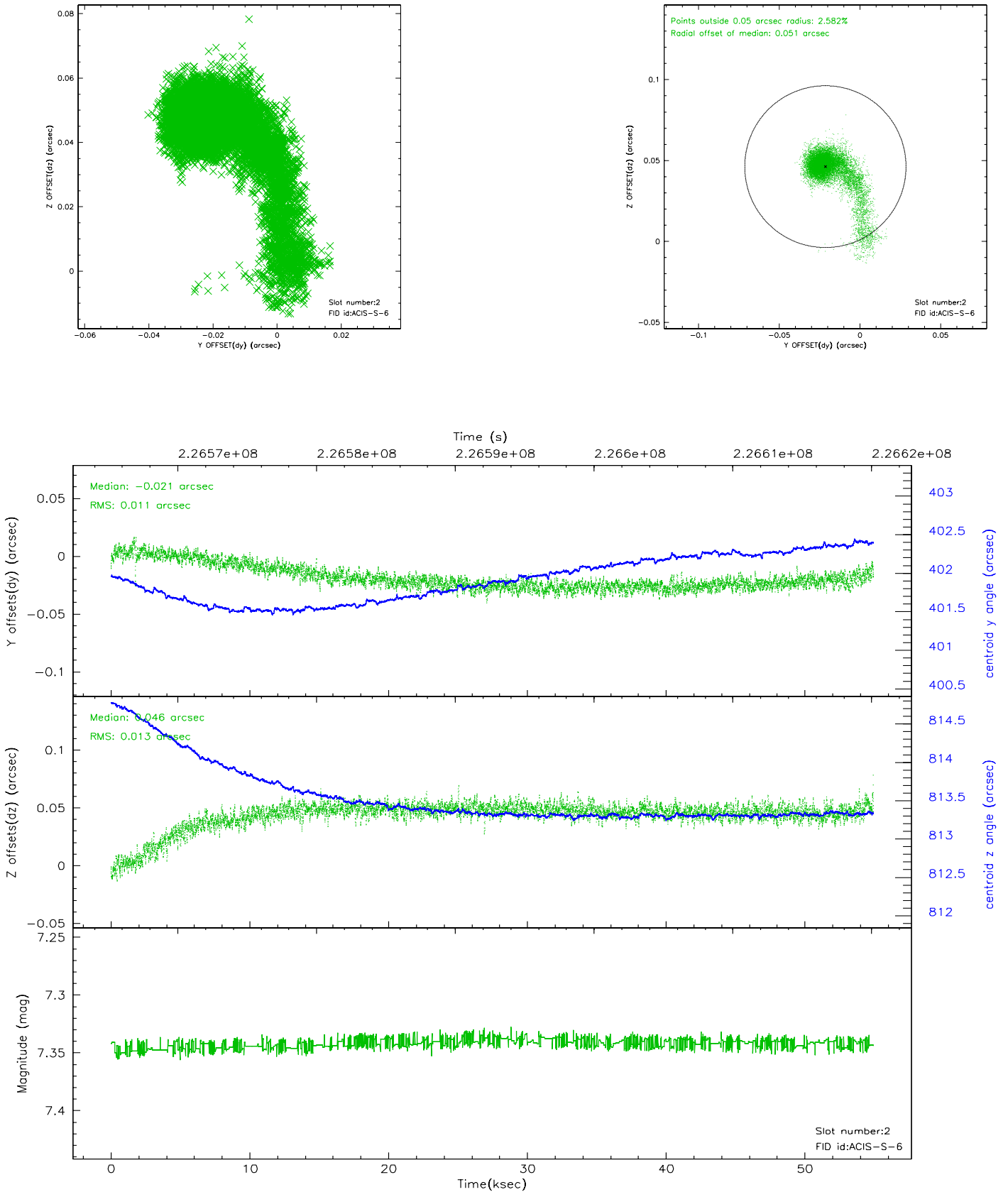
2.5.1 Slot 0



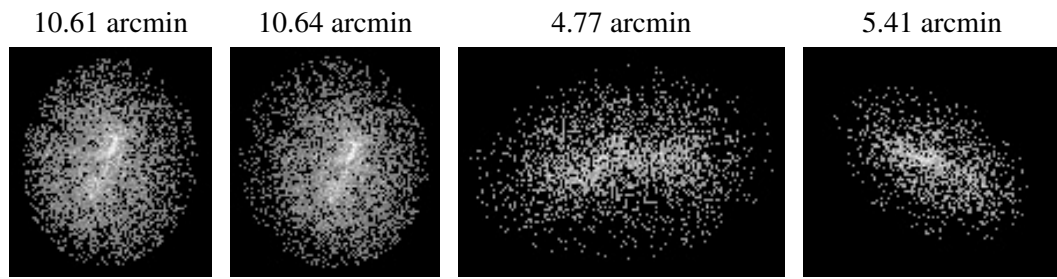
2.5.2 Slot 1



2.5.3 Slot 2



3 Point Sources



A Summary

A.1 Status

| | |
|----------------------------|-------------|
| V&V Scientist | Doug Morgan |
| V&V Date (YYYY-MM-DD) | 2006.02.26 |
| V&V Edition | 1 |
| V&V Disposition and Status | OK |
| V&V Charge Time | 54.94079 |

A.2 Comments