

# V&V Reference Report

## L2 ASCDS Version : 8.5

Observation 4521 - L2 Version 4  
Chandra X-Ray Center

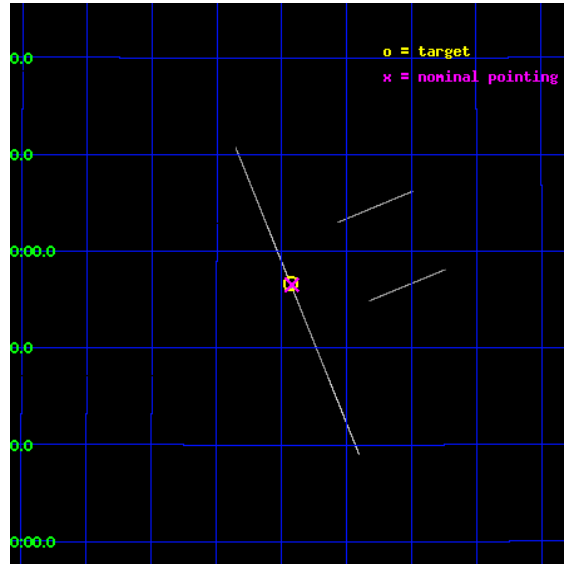
L2 Processing Date : Dec 8 2012

## Contents

<b>1</b>	<b>Front</b>	<b>2</b>
<b>2</b>	<b>OBI</b>	<b>3</b>
2.1	OBI . . . . .	3
2.1.1	Images . . . . .	3
2.1.2	Parameters . . . . .	4
2.1.3	Events . . . . .	4
2.2	Compared Parameters . . . . .	5
2.3	Aspect . . . . .	6
2.4	Star Slots . . . . .	9
2.4.1	Slot 3 . . . . .	9
2.4.2	Slot 4 . . . . .	10
2.4.3	Slot 5 . . . . .	11
2.4.4	Slot 6 . . . . .	12
2.4.5	Slot 7 . . . . .	13
2.5	FID Slots . . . . .	14
2.5.1	Slot 0 . . . . .	14
2.5.2	Slot 1 . . . . .	15
2.5.3	Slot 2 . . . . .	16
<b>A</b>	<b>Summary</b>	<b>17</b>
A.1	Status . . . . .	17
A.2	Comments . . . . .	17

# 1 Front

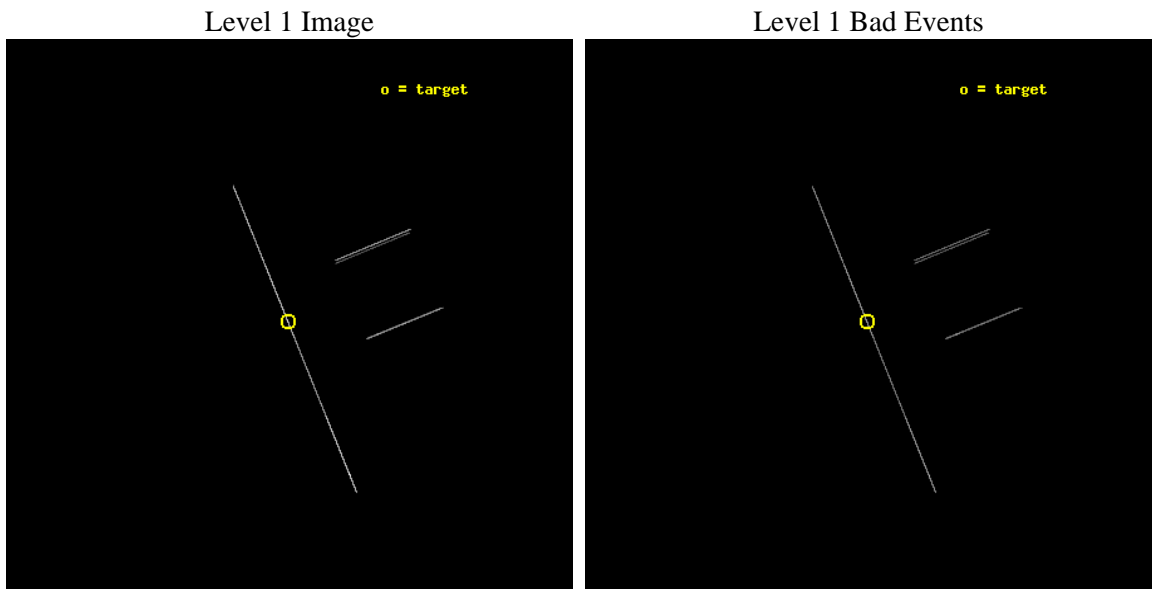
seq_num	300115	Sequence number
obs_id	4521	Observation id
title	Continued Monitoring of the Orbital Evolution of RX J1914.4+2456	P
observer	Dr. Tod Strohmayer	Principal investigator
object	RX J1914.4+2456	Source name
ra_targ	288.60875	Observer's specified target RA [deg]
dec_targ	24.945444	Observer's specified target Dec [deg]
ra_nom	288.60538862159	Nominal RA [deg]
dec_nom	24.942315920839	Nominal Dec [deg]
roll_nom	247.79851203666	Nominal Roll [deg]
revision	4	Processing version of data
ontime	15144.25	Sum of GTIs [s]
livetime	15085.092773438	Livetime [s]
ontime2	15144.25	Sum of GTIs [s]
ontime3	15144.25	Sum of GTIs [s]
ontime5	15144.25	Sum of GTIs [s]
ontime6	15144.25	Sum of GTIs [s]
ontime7	15144.25	Sum of GTIs [s]
ontime8	15144.25	Sum of GTIs [s]
l2events	211643	Number of level 2 events



## 2 OBI

### 2.1 OBI

#### 2.1.1 Images



### 2.1.2 Parameters

obi_num	0	Obi number	sched_exp_time	15000.000000	[s] Scheduled observation exposure time
ascdsver	8.5	Processing system revision	ontime	15144.25	Sum of GTIs [s]
caldsver	4.5.4	&#160	ontime2	15144.25	Sum of GTIs [s]
date	2012-12-08T09:29:06	Date and time of file creation	ontime3	15144.25	Sum of GTIs [s]
revision	4	Processing version of data	ontime5	15144.25	Sum of GTIs [s]
			ontime6	15144.25	Sum of GTIs [s]
			ontime7	15144.25	Sum of GTIs [s]
			ontime8	15144.25	Sum of GTIs [s]
			l1events	352857	Number of level 1 events

### 2.1.3 Events

	ccd 2	ccd 3	ccd 5	ccd 6	ccd 7	ccd 8
level 1 events	26080	26577	133301	26458	87623	52818
rejected events	7104	6976	20019	7084	18532	11391
rejected %	27%	26%	15%	26%	21%	21%

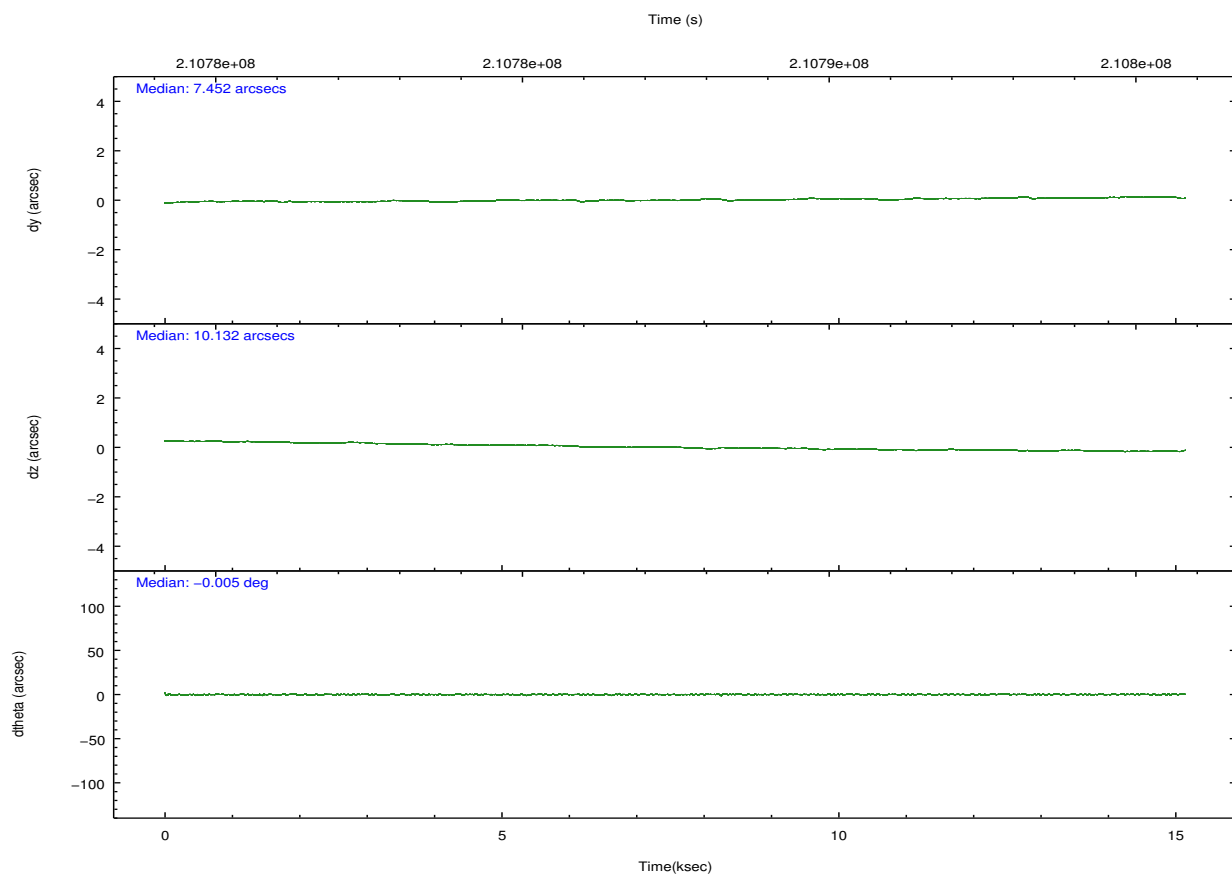
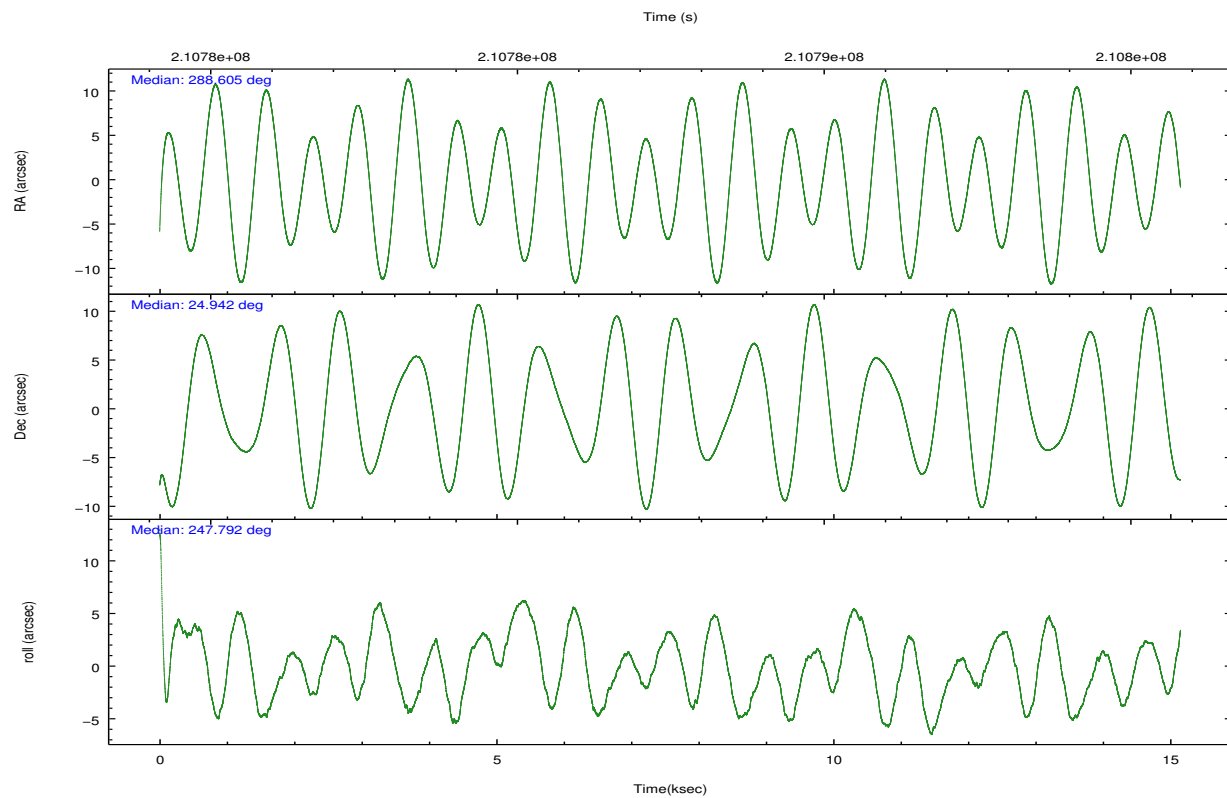
	ccd 2	ccd 3	ccd 5	ccd 6	ccd 7	ccd 8
grade 0 events	2745	2464	33315	2240	5847	8228
	10%	9%	24%	8%	6%	15%
grade 1 events	188	87	124	64	140	146
	0%	0%	0%	0%	0%	0%
grade 2 events	8217	8533	32556	8200	19929	14457
	31%	32%	24%	30%	22%	27%
grade 3 events	2626	2971	1912	2698	3397	5136
	10%	11%	1%	10%	3%	9%
grade 4 events	2576	2624	1828	2586	3280	5021
	9%	9%	1%	9%	3%	9%
grade 5 events	4873	4763	9925	5160	12295	7264
	18%	17%	7%	19%	14%	13%
grade 6 events	4855	5135	53641	5510	42735	12566
	18%	19%	40%	20%	48%	23%
grade 7 events	0	0	0	0	0	0
	0%	0%	0%	0%	0%	0%



## 2.2 Compared Parameters

Parameter	Planned	Actual	Parameter	Planned	Actual
Instrument	ACIS	ACIS	Obspar format version number	7	7
Detector	ACIS-235678	ACIS-235678	Obspar file type	PREDICTED	ACTUAL
Grating	NONE	NONE	Obspar update status	NONE	UPDATED
Data mode	CC33_GRADED	CC33_GRADED	Number of optional ACIS chips dropped	0	0
Observation mode	POINTING	POINTING	On-chip summing requested	N	N
[deg] Pointing RA	288.600876	288.6053886215897	Subarray requested	NONE	NONE
[deg] Pointing Dec	24.969278	24.94231592083857	Alternating exposures requested	N	N
[deg] Pointing Roll	247.643774	247.7985120366639	[s] Primary exposure time	0.000000	0
[mm] SIM focus pos	-0.684267	-0.6828225247311905			
[mm] SIM defocus	0	0.001444936568705701			
[mm] SIM translation stage pos	-190.132523	-190.1400660498719			
[mm] SIM translation stage offset	0	0.00754346686406393			
[s] Observation start time (MET)	210780064.184000	210778512.73213			
Observation start date	2004-09-05T14:00:00	2004-09-05T13:35:12			
[s] Observation end time (MET)	210795064.184000	210795829.08291			
Observation end date	2004-09-05T18:10:00	2004-09-05T18:23:49			
Read mode	CONTINUOUS	CONTINUOUS			

## 2.3 Aspect

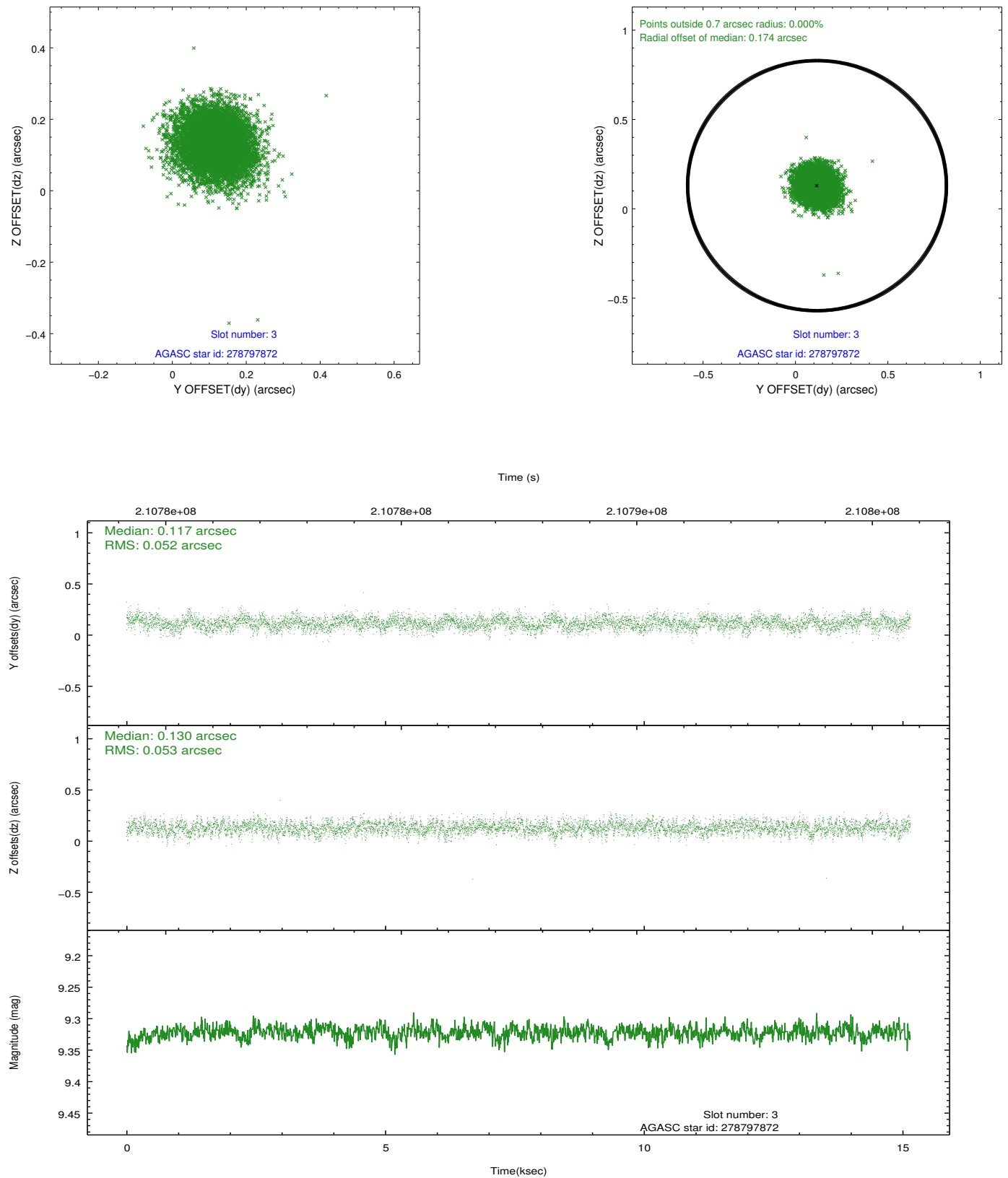


### Slot Statistics

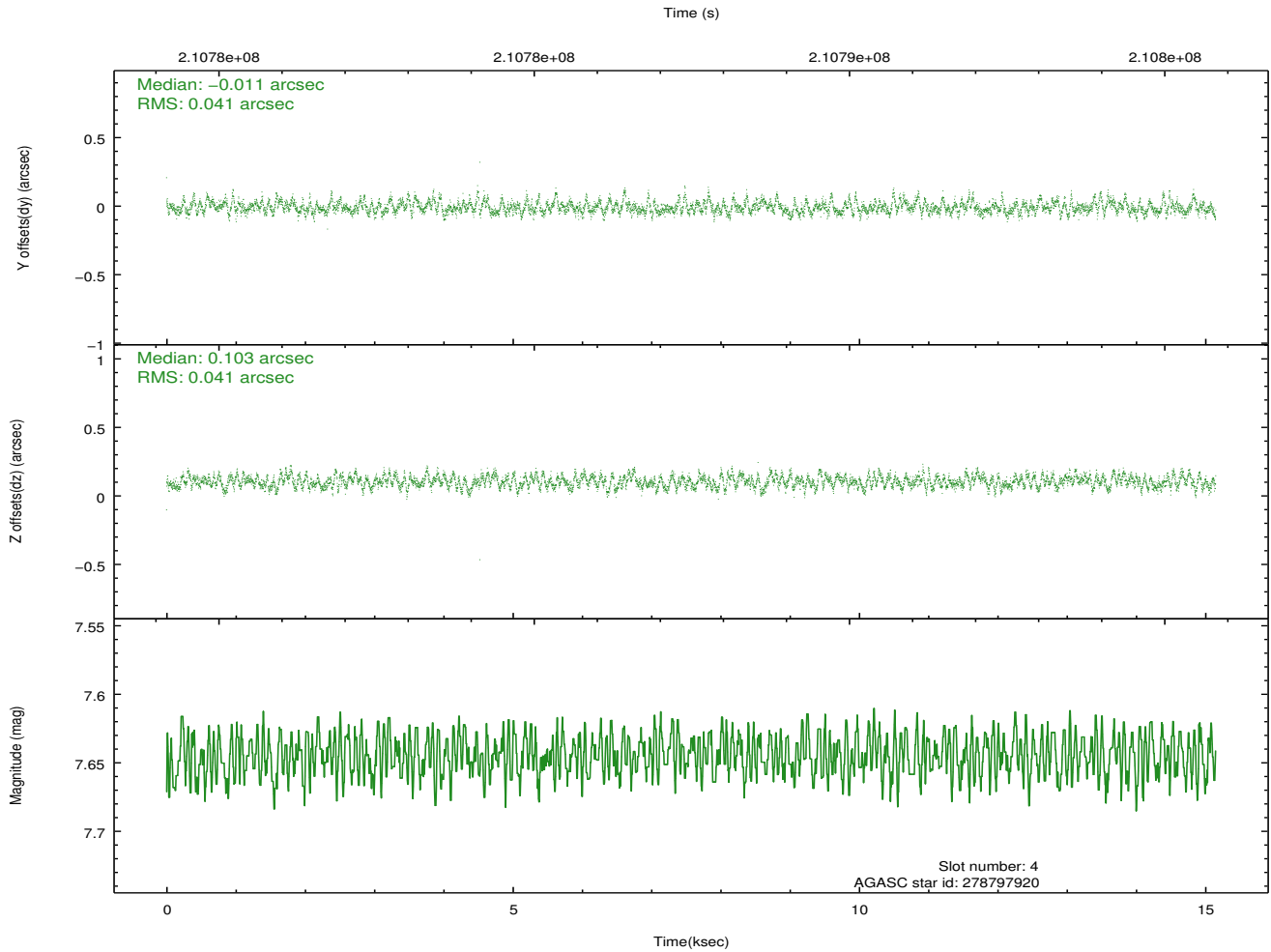
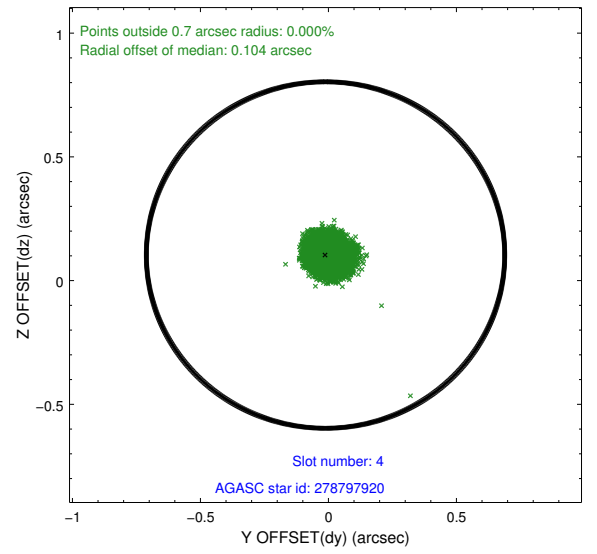
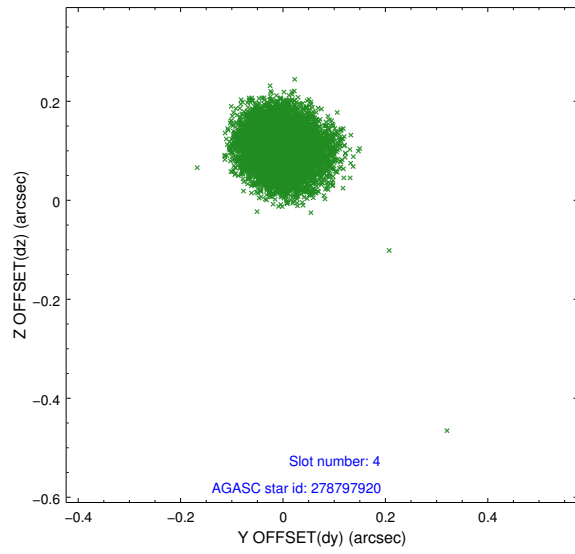
slot	status	id	mag	n_pts	med_dy	med_dz	dr1	dr2	ra	dec	mean_y	mean_z
0	FID	ACIS-S-2	7.10	3694	-0.050	-0.021	0.008	0.013	0.000000	0.000000	-760.24	-1731.44
1	FID	ACIS-S-4	7.21	3695	0.093	0.030	0.007	0.014	0.000000	0.000000	2153.00	176.86
2	FID	ACIS-S-5	7.23	3695	-0.074	-0.000	0.009	0.016	0.000000	0.000000	-1812.77	170.74
3	GUIDE	278797872	9.32	7385	0.117	0.130	0.079	0.128	288.418074	24.631395	1352.56	-90.51
4	GUIDE	278797920	7.64	7389	-0.011	0.103	0.062	0.098	288.580174	25.013203	-120.06	-122.59
5	GUIDE	278802576	9.50	7385	0.080	-0.218	0.087	0.140	288.504248	24.563340	1472.12	263.09
6	GUIDE	278806384	9.45	7382	-0.001	-0.076	0.088	0.149	288.649975	24.433815	1721.96	882.16
7	GUIDE	278954448	7.73	7388	-0.184	0.061	0.059	0.093	289.033961	24.779147	93.58	1568.73

## 2.4 Star Slots

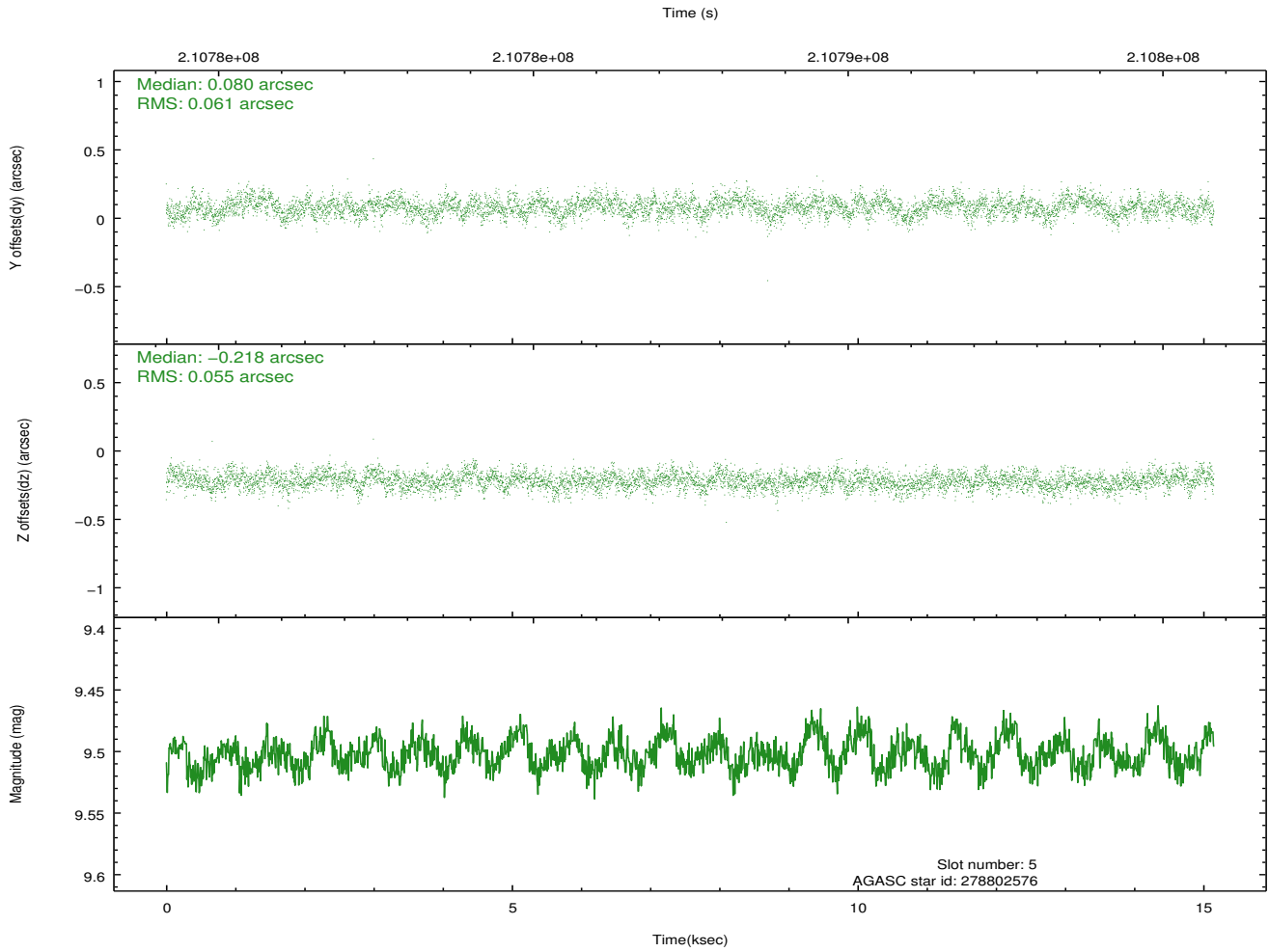
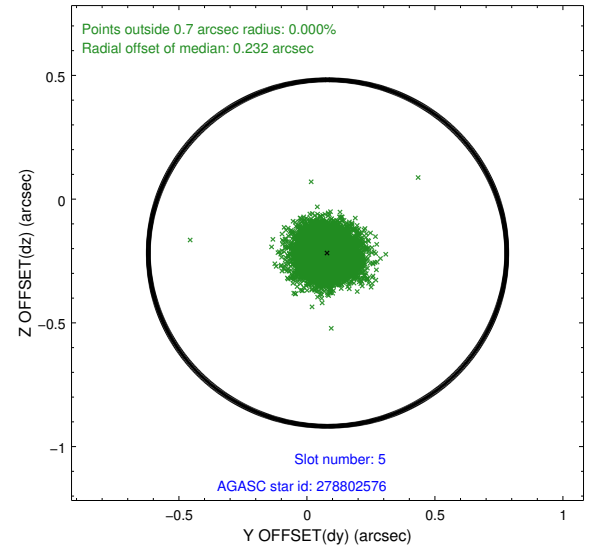
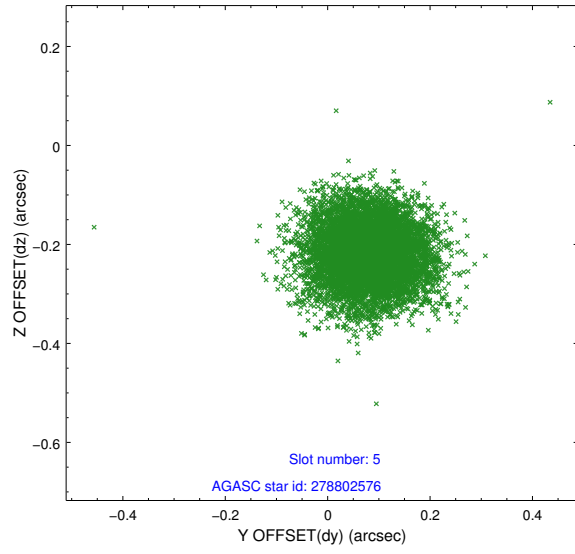
### 2.4.1 Slot 3



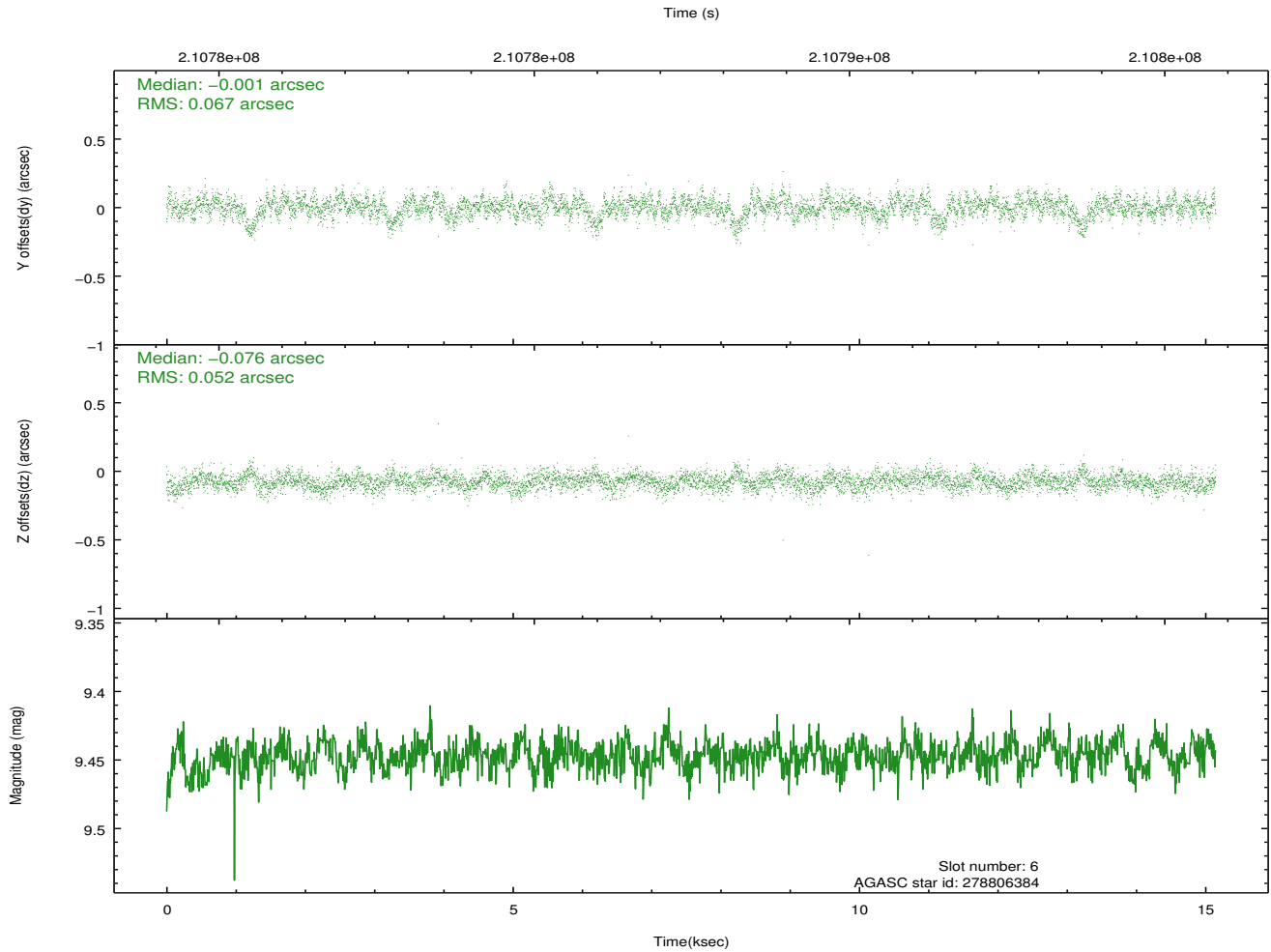
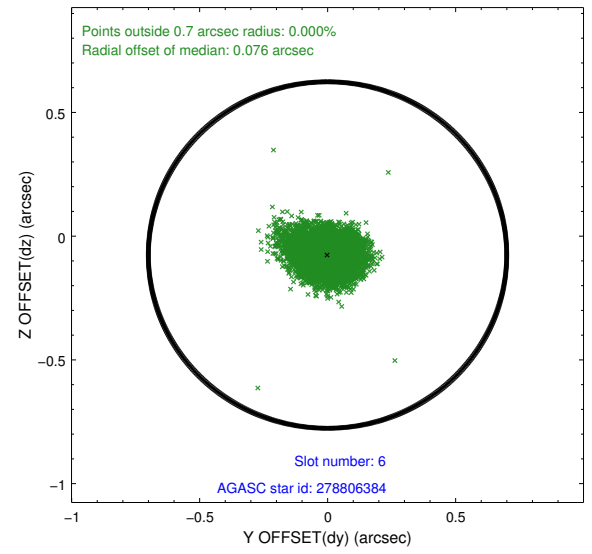
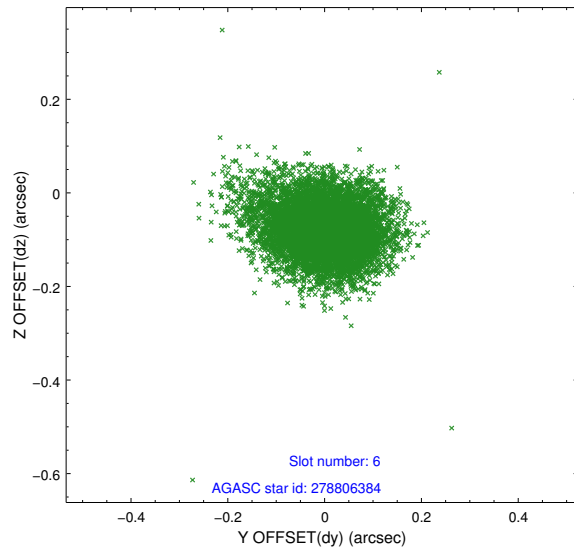
## 2.4.2 Slot 4



### 2.4.3 Slot 5

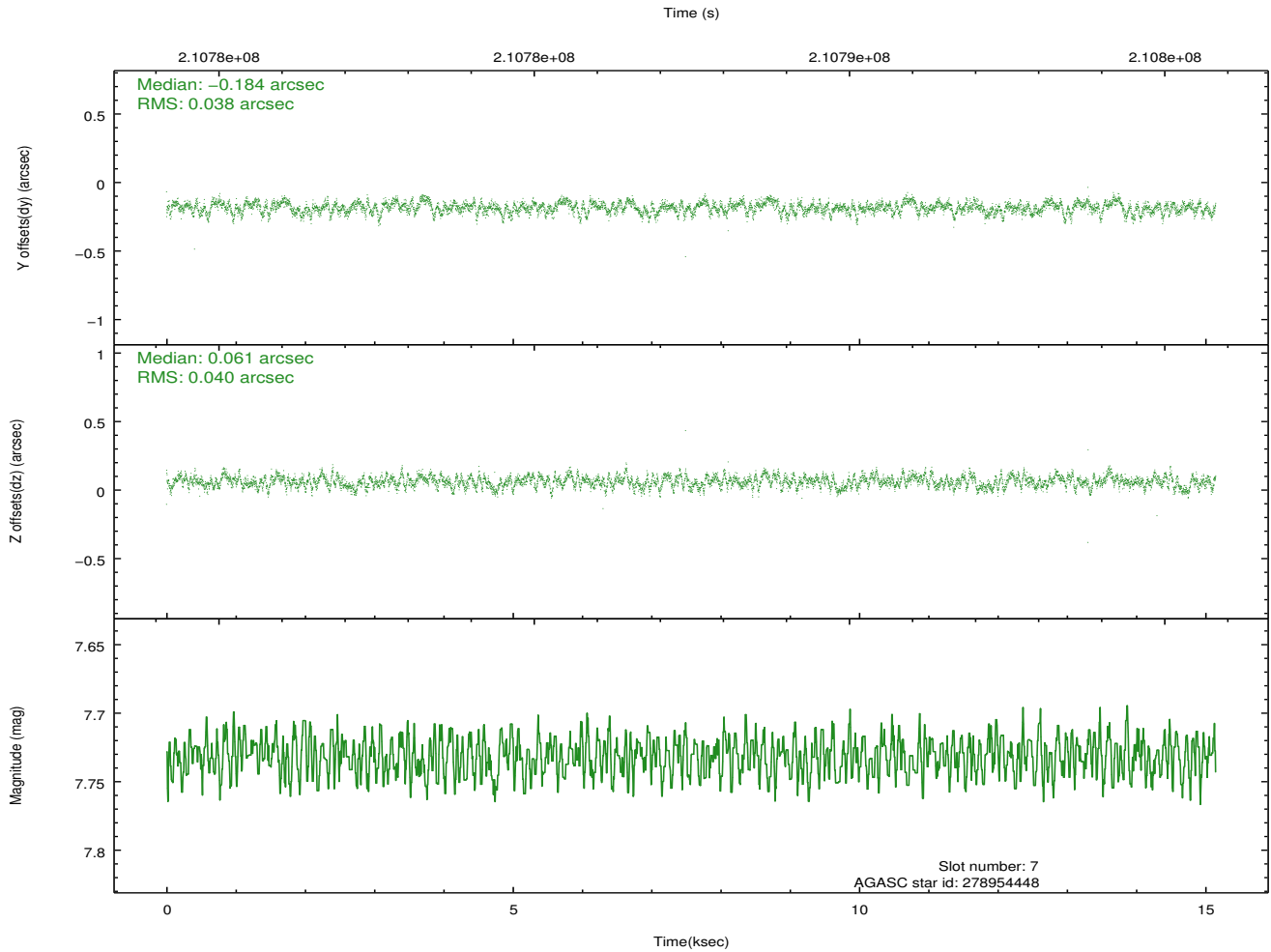
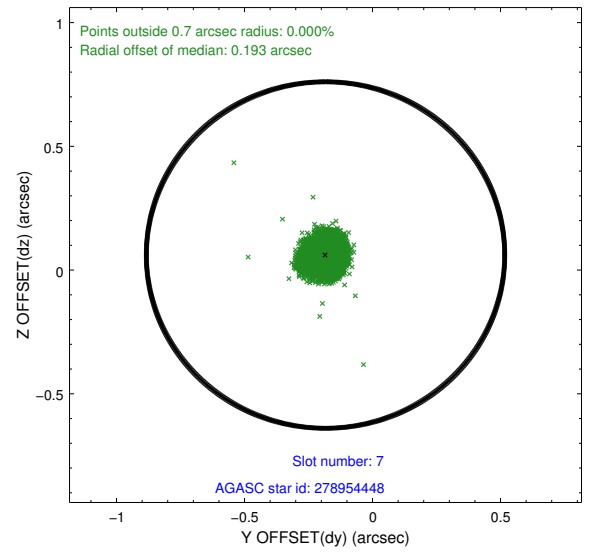
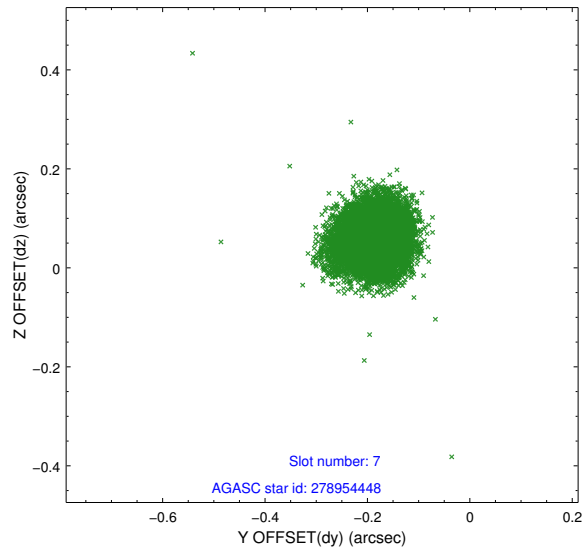


## 2.4.4 Slot 6



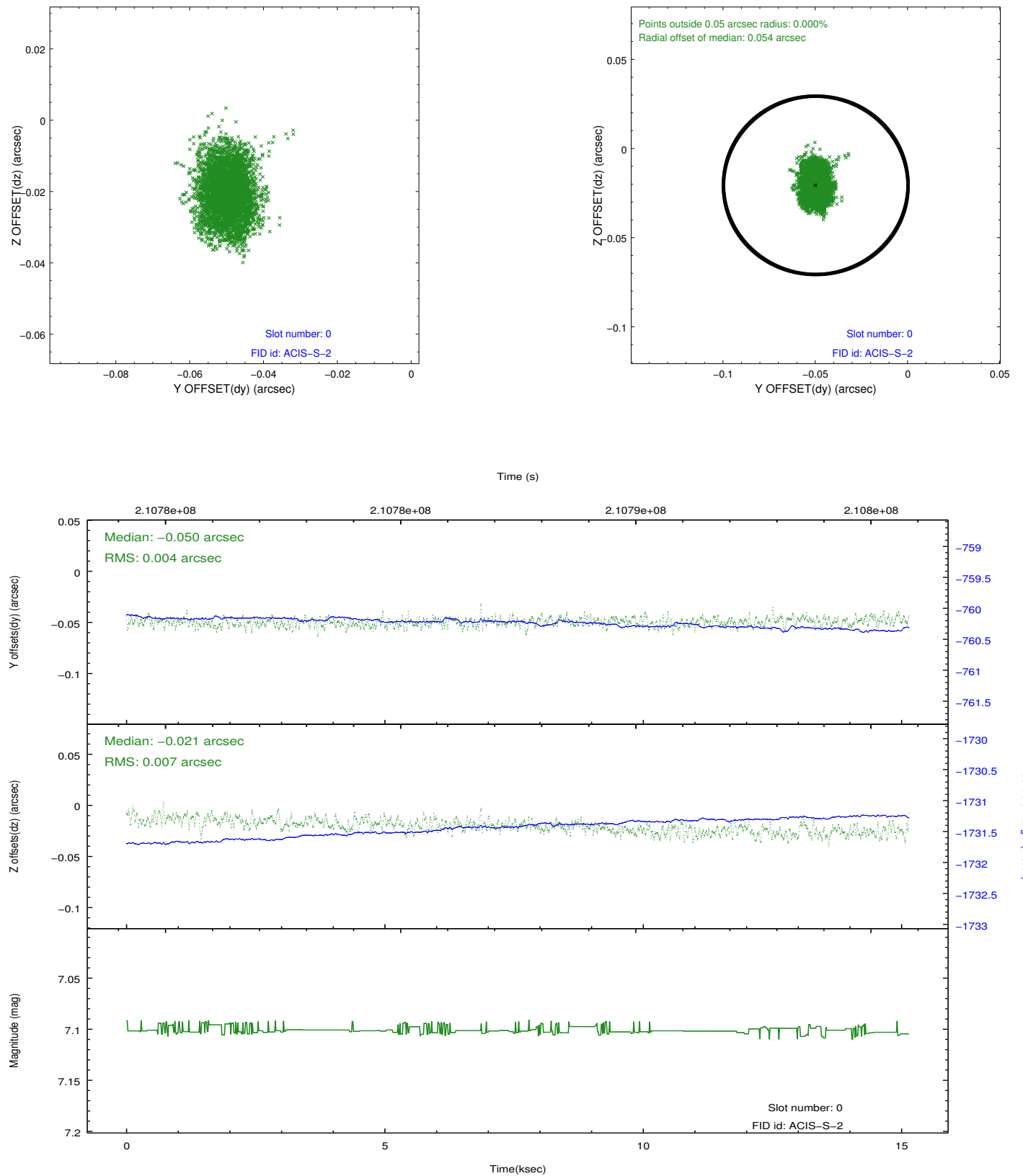


## 2.4.5 Slot 7

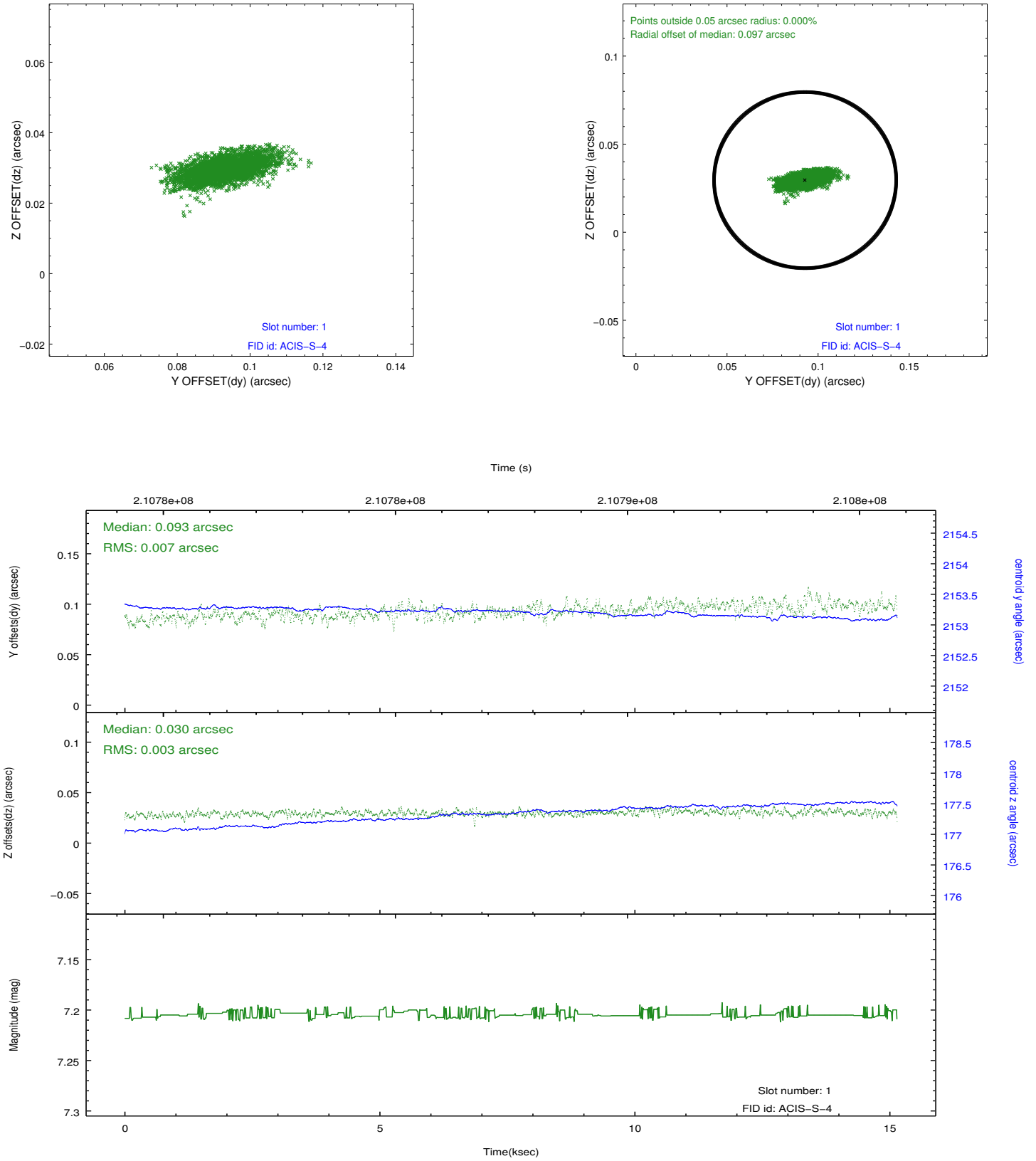


## 2.5 FID Slots

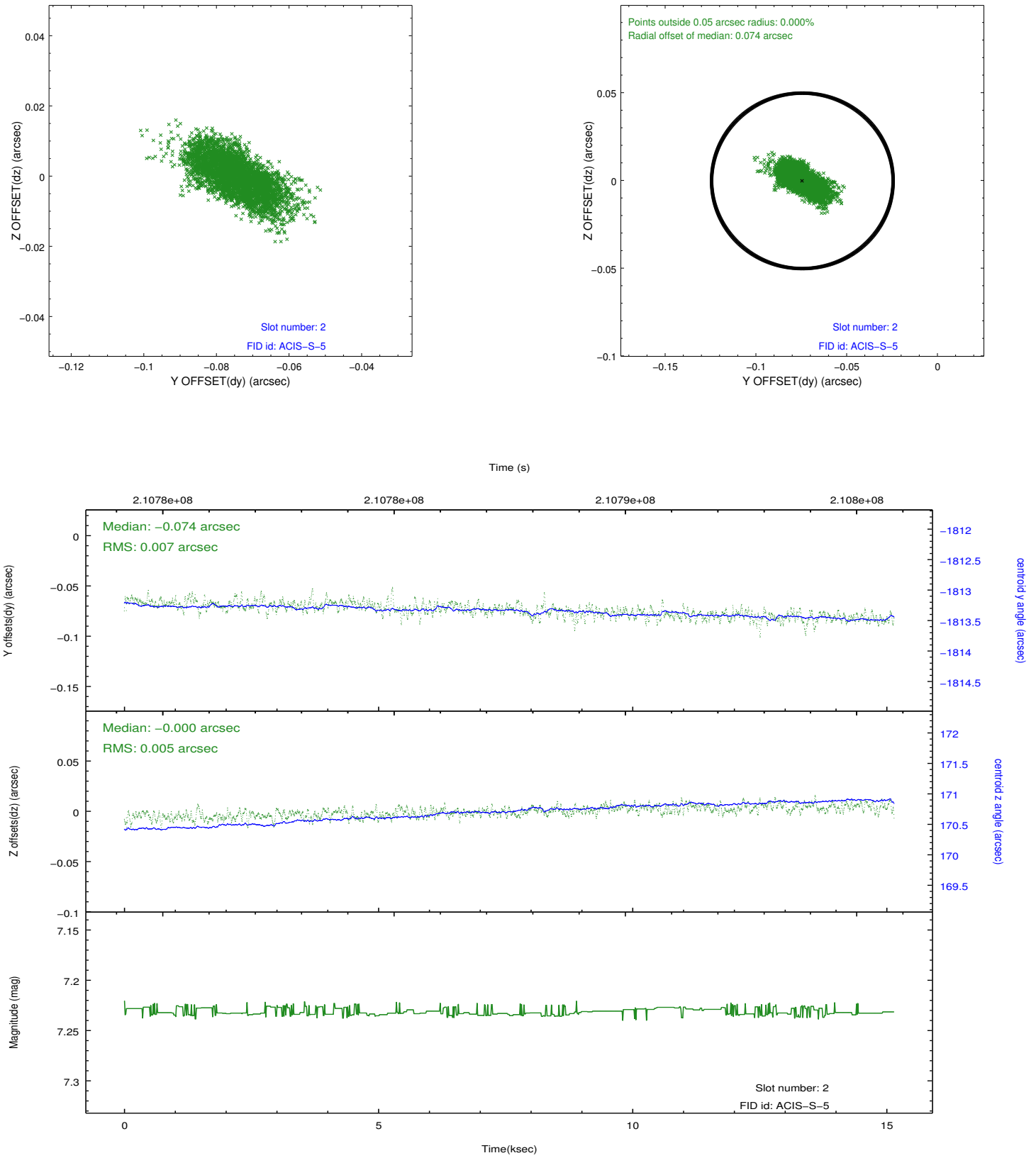
### 2.5.1 Slot 0



## 2.5.2 Slot 1



### 2.5.3 Slot 2



## A Summary

### A.1 Status

V&V Scientist	Joy Nichols
V&V Date (YYYY-MM-DD)	2012.12.28
V&V Edition	1
V&V Disposition and Status	OK
V&V Charge Time	15.148

### A.2 Comments