

V&V Reference Report

L2 ASCDS Version : 7.6.7.2

Observation 5307 - L2 Version 001
Chandra X-Ray Center

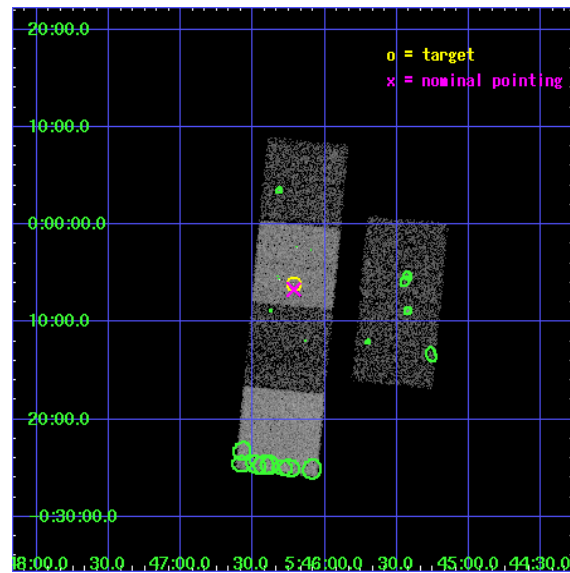
L2 Processing Date : May 31 2006

Contents

1	Front	2
2	OBI	3
2.1	OBI	3
2.1.1	Images	3
2.1.2	Bias	3
2.1.3	Parameters	4
2.1.4	Events	4
2.2	Compared Parameters	5
2.3	Aspect	6
2.4	Star Slots	9
2.4.1	Slot 3	9
2.4.2	Slot 4	10
2.4.3	Slot 5	11
2.4.4	Slot 6	12
2.4.5	Slot 7	13
2.5	FID Slots	14
2.5.1	Slot 0	14
2.5.2	Slot 1	15
2.5.3	Slot 2	16
3	Point Sources	17
A	Summary	18
A.1	Status	18
A.2	Comments	18

1 Front

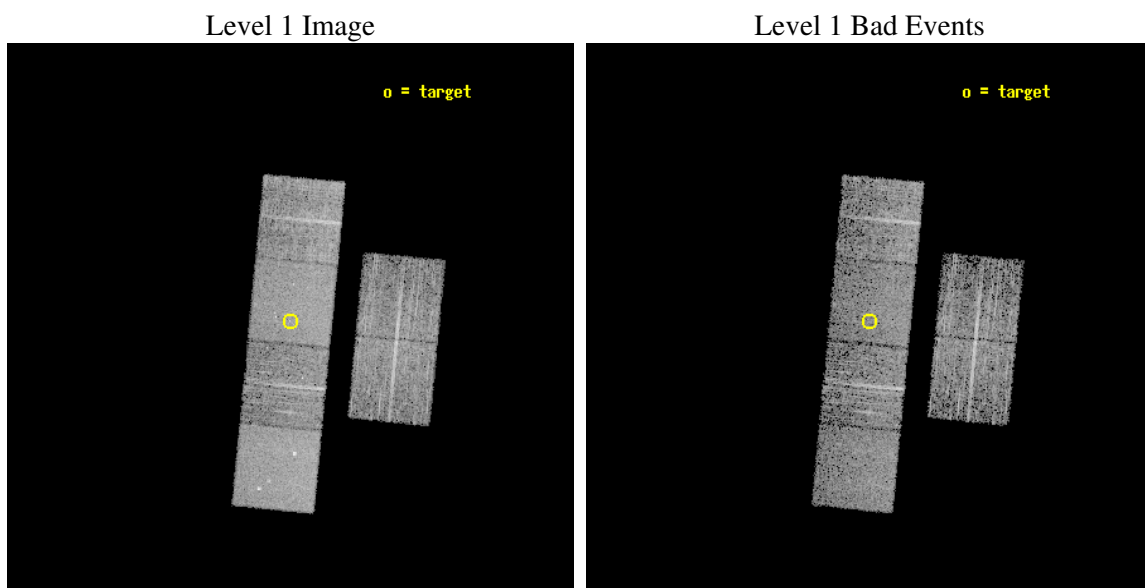
seq_num	200297
obs_id	5307
title	A Star is Born: X-ray Imaging of the Onset of an FU Ori Outburst
observer	Prof. Joel Kastner
object	IRAS05436-0007
dtcycle	0
cycle	P
ra_targ	86.554583
dec_targ	-0.101389
ra_nom	86.553864881088
dec_nom	-0.1111169949872
roll_nom	275.4938128939
revision	2
ontime	5561.5999792814
livetime	5491.1756515503
ontime2	5561.5999792814
ontime3	5561.5999792814
ontime5	5561.5999792814
ontime6	5561.5999792814
ontime7	5561.5999792814
ontime8	5561.5999792814
l2events	56693



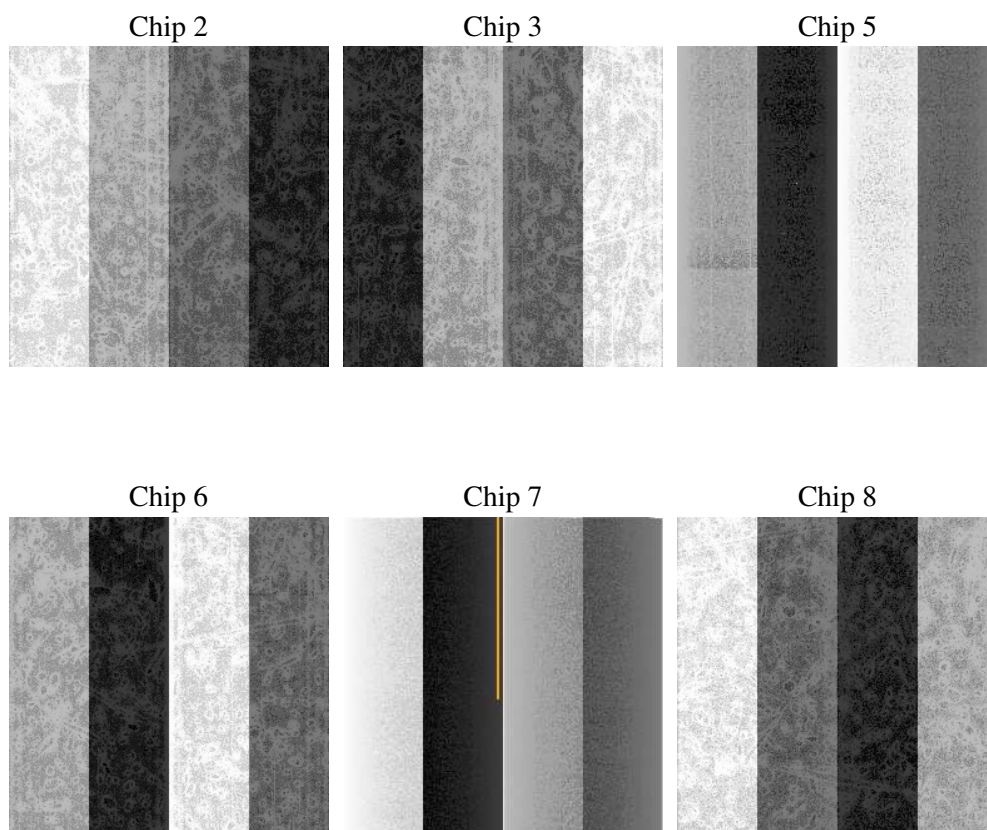
2 OBI

2.1 OBI

2.1.1 Images



2.1.2 Bias



2.1.3 Parameters

obi_num	0
ascdsver	7.6.7.2
caldbver	3.2.2
date	2006-05-31T12:24:23
revision	2

sched_exp_time	5425.288000
ontime	5856.4991770089
ontime2	5856.4991770089
ontime3	5856.4991770089
ontime5	5856.4991770089
ontime6	5856.4991770089
ontime7	5856.4991770089
ontime8	5856.4991770089
l1events	276833

2.1.4 Events

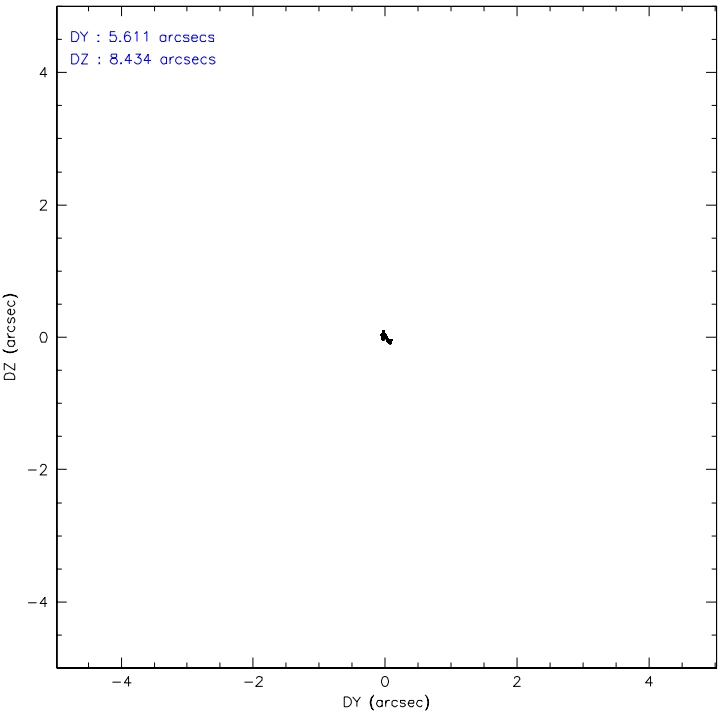
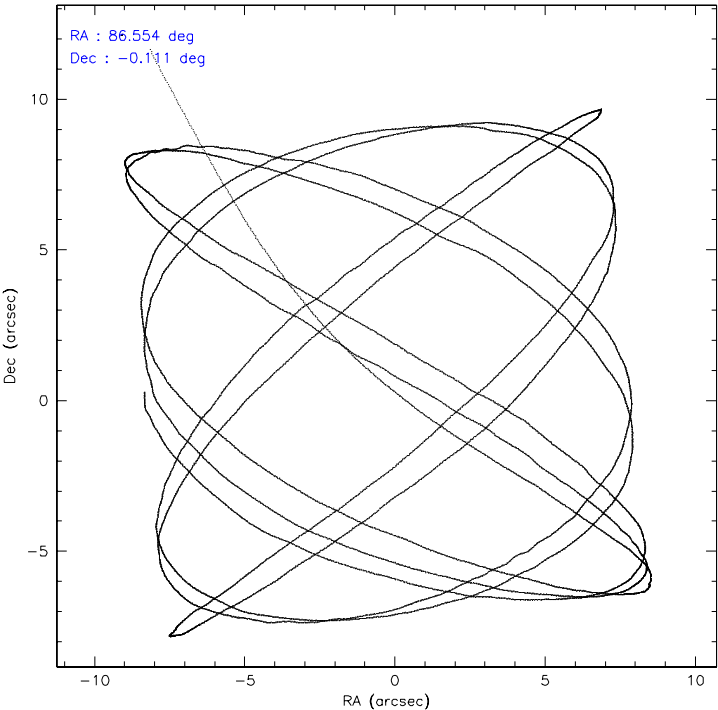
	ccd 2	ccd 3	ccd 5	ccd 6	ccd 7	ccd 8
level 1 events	40337	37518	58118	38968	52685	49207
rejected events	35973	33289	33946	34436	34125	39565
rejected %	89%	88%	58%	88%	64%	80%

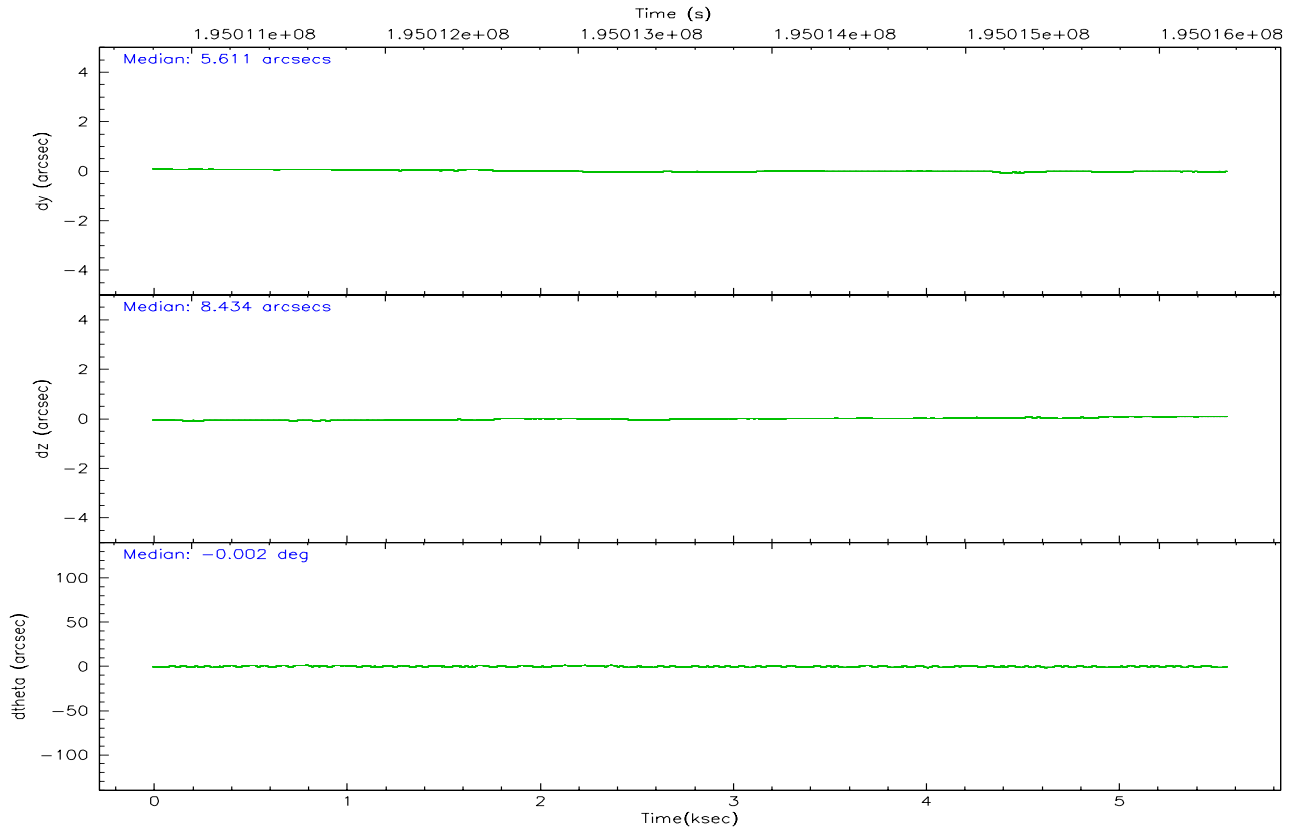
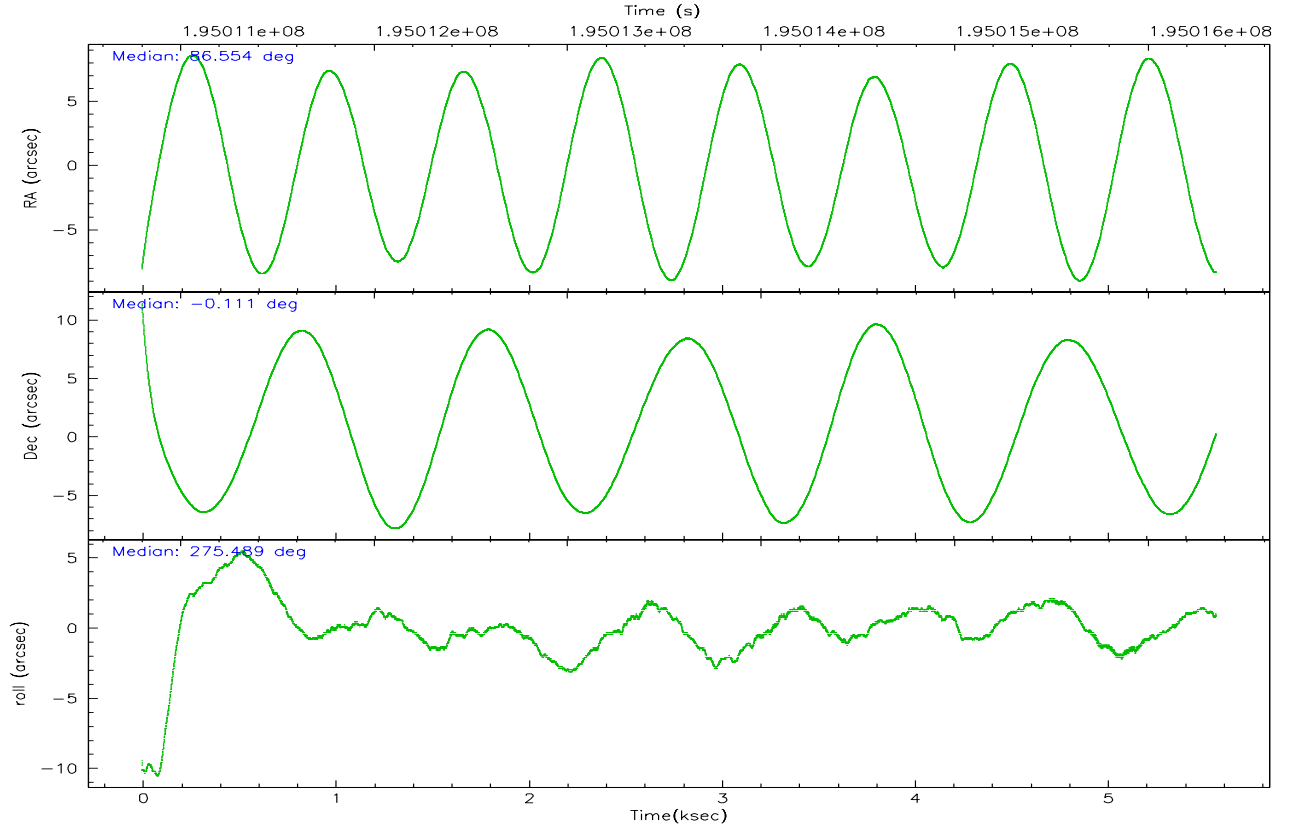
	ccd 2	ccd 3	ccd 5	ccd 6	ccd 7	ccd 8
grade 0 events	2035	1901	1919	1959	1109	3183
	5%	5%	3%	5%	2%	6%
grade 1 events	28	19	62	23	35	32
	0%	0%	0%	0%	0%	0%
grade 2 events	929	874	7766	998	4789	2284
	2%	2%	13%	2%	9%	4%
grade 3 events	421	432	510	460	943	1093
	1%	1%	0%	1%	1%	2%
grade 4 events	445	423	559	445	946	1080
	1%	1%	0%	1%	1%	2%
grade 5 events	1629	1681	2739	1748	3342	2311
	4%	4%	4%	4%	6%	4%
grade 6 events	753	792	14792	901	11807	2523
	1%	2%	25%	2%	22%	5%
grade 7 events	34097	31396	29771	32434	29714	36701
	84%	83%	51%	83%	56%	74%

2.2 Compared Parameters

Parameter	Planned	Actual	Parameter	Planned	Actual
Instrument	ACIS	ACIS	Obspar format version number	6	6
Detector	ACIS-235678	ACIS-235678	Obspar file type	PREDICTED	ACTUAL
Grating	NONE	NONE	Obspar update status	NONE	UPDATED
Data mode	FAINT	FAINT	On-chip summing requested	N	N
Observation mode	POINTING	POINTING	Subarray requested	NONE	NONE
Pointing RA	86.537703	86.55386488108824	Alternating exposures requested	N	N
Pointing Dec	-0.089068	-0.1111169949871959	Primary exposure time	0.000000	3.2
Pointing Roll	275.337159	275.4938128938998			
SIM focus pos (mm)	-0.684267	-0.6828225247311905			
SIM defocus (mm)	0	0.001444936568705701			
SIM translation stage pos (mm)	-190.132523	-190.1425803651734			
SIM translation stage offset (mm)	0	0.01005778216563158			
Observation start time	195010934.184000	195009740.85977			
Observation start date	2004-03-07T01:41:10	2004-03-07T01:22:20			
Observation end time	195016359.184000	195018246.31014			
Observation end date	2004-03-07T03:11:35	2004-03-07T03:44:06			
Read mode	TIMED	TIMED			

2.3 Aspect



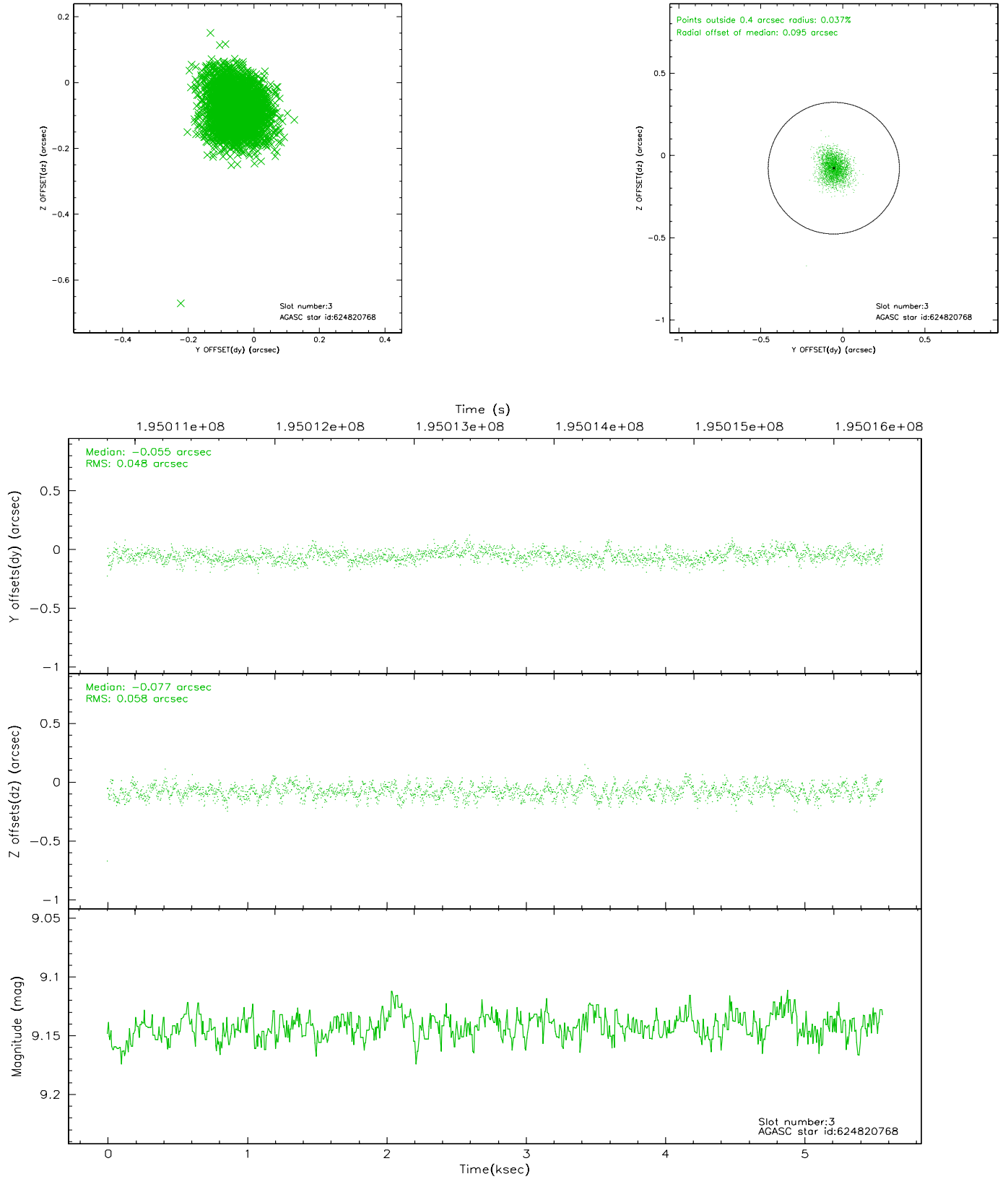


Slot Statistics

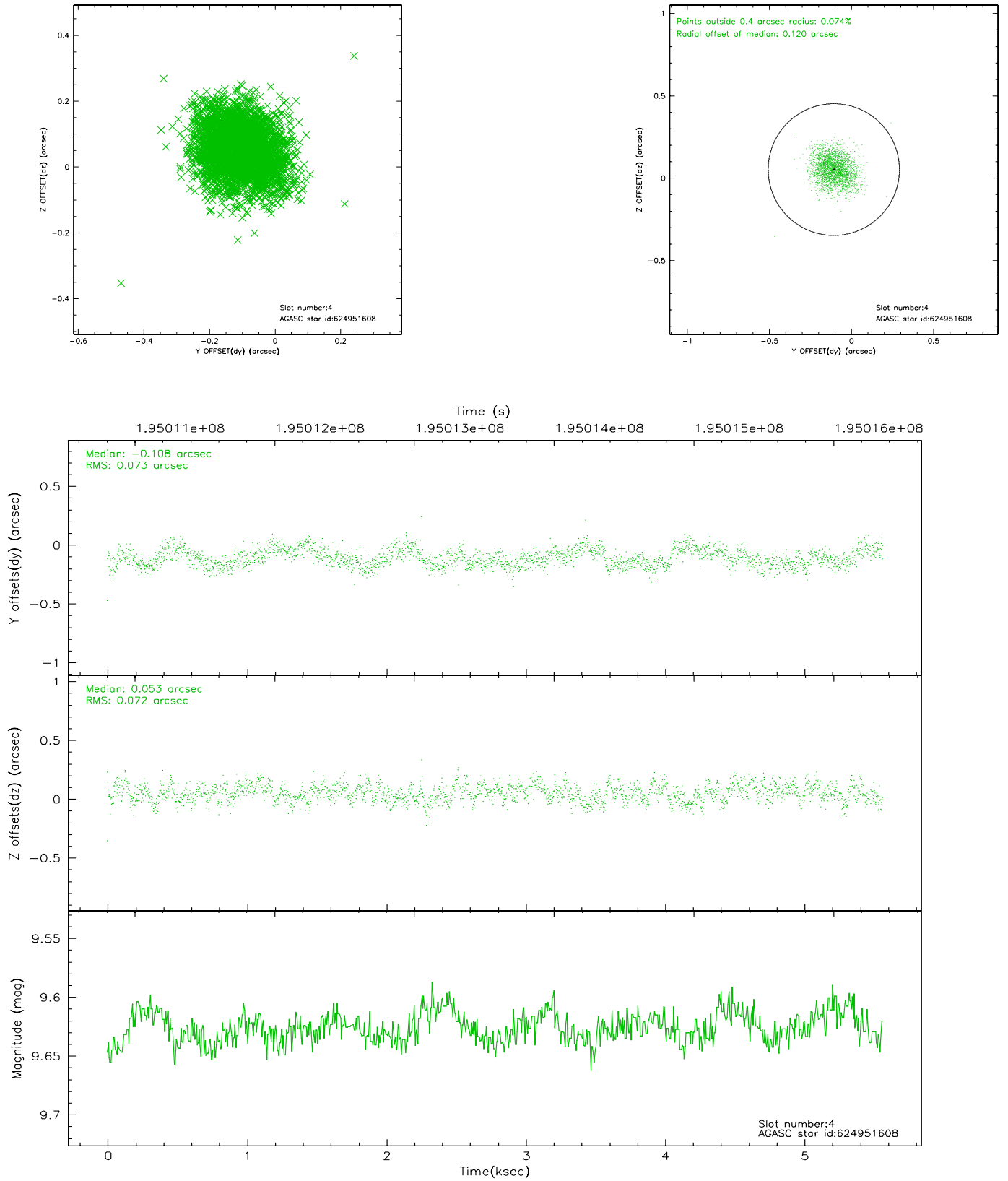
slot	status	id	mag	n_pts	med_dy	med_dz	dr1	dr2	ra	dec	mean_y	mean_z
0	FID	ACIS-S-2	7.10	1358	0.004	-0.007	0.006	0.010	0.000000	0.000000	-758.38	-1729.57
1	FID	ACIS-S-5	7.23	1358	-0.045	0.013	0.007	0.011	0.000000	0.000000	-1811.97	171.35
2	FID	ACIS-S-6	7.35	1358	0.015	0.001	0.005	0.009	0.000000	0.000000	402.15	816.39
3	GUIDE	624820768	9.14	2712	-0.055	-0.077	0.080	0.129	86.202480	-0.061953	-209.52	-1192.67
4	GUIDE	624951608	9.63	2715	-0.108	0.053	0.110	0.172	86.354222	-0.045842	-216.63	-643.68
5	GUIDE	624953040	8.69	2715	-0.041	0.163	0.055	0.089	87.231595	-0.668980	2311.03	2293.26
6	GUIDE	624954088	9.60	2712	0.124	0.001	0.104	0.170	86.606399	-0.671650	2112.06	52.08
7	GUIDE	624954400	9.19	2713	0.071	-0.139	0.084	0.137	86.607838	-0.762568	2438.30	25.84

2.4 Star Slots

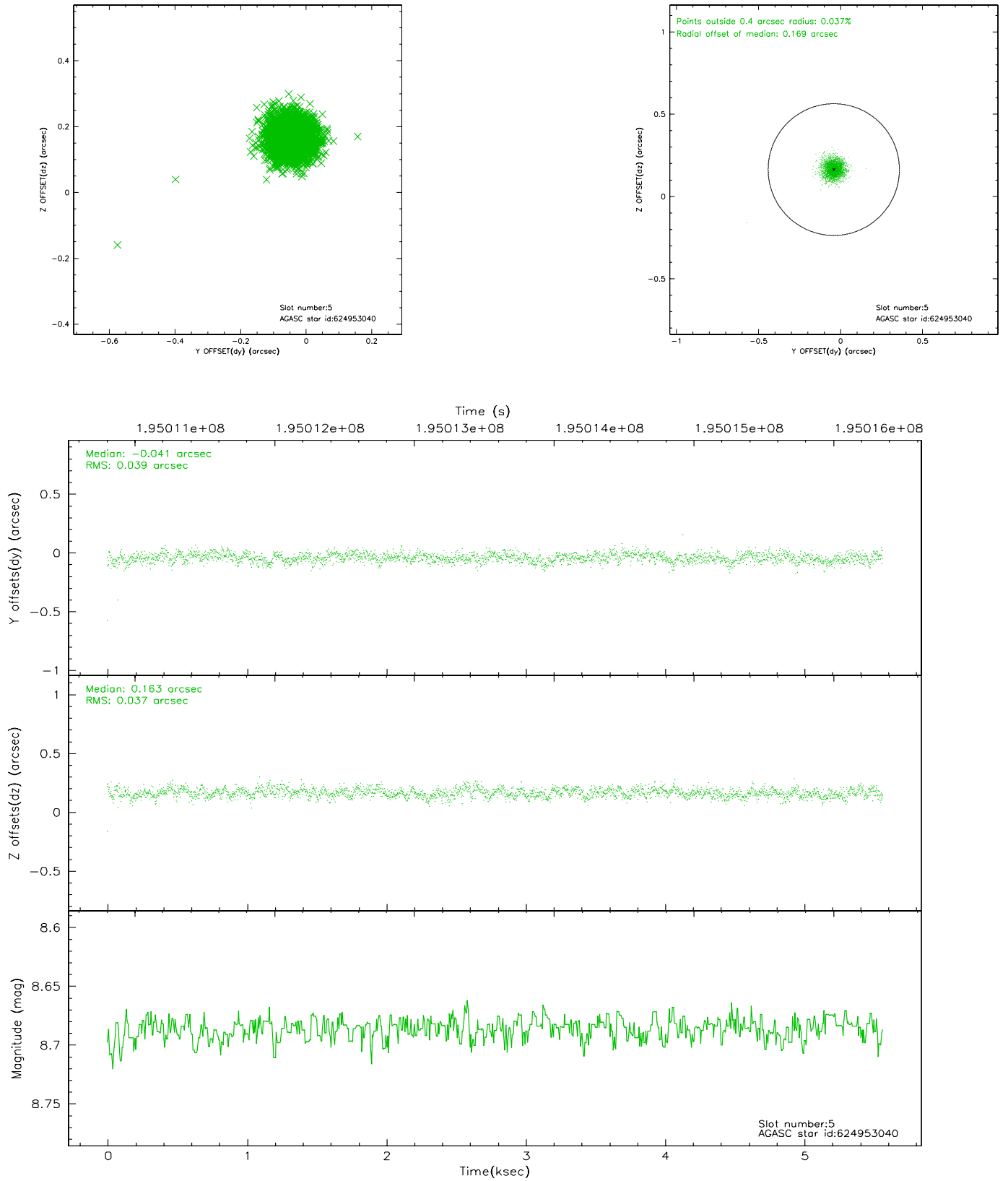
2.4.1 Slot 3



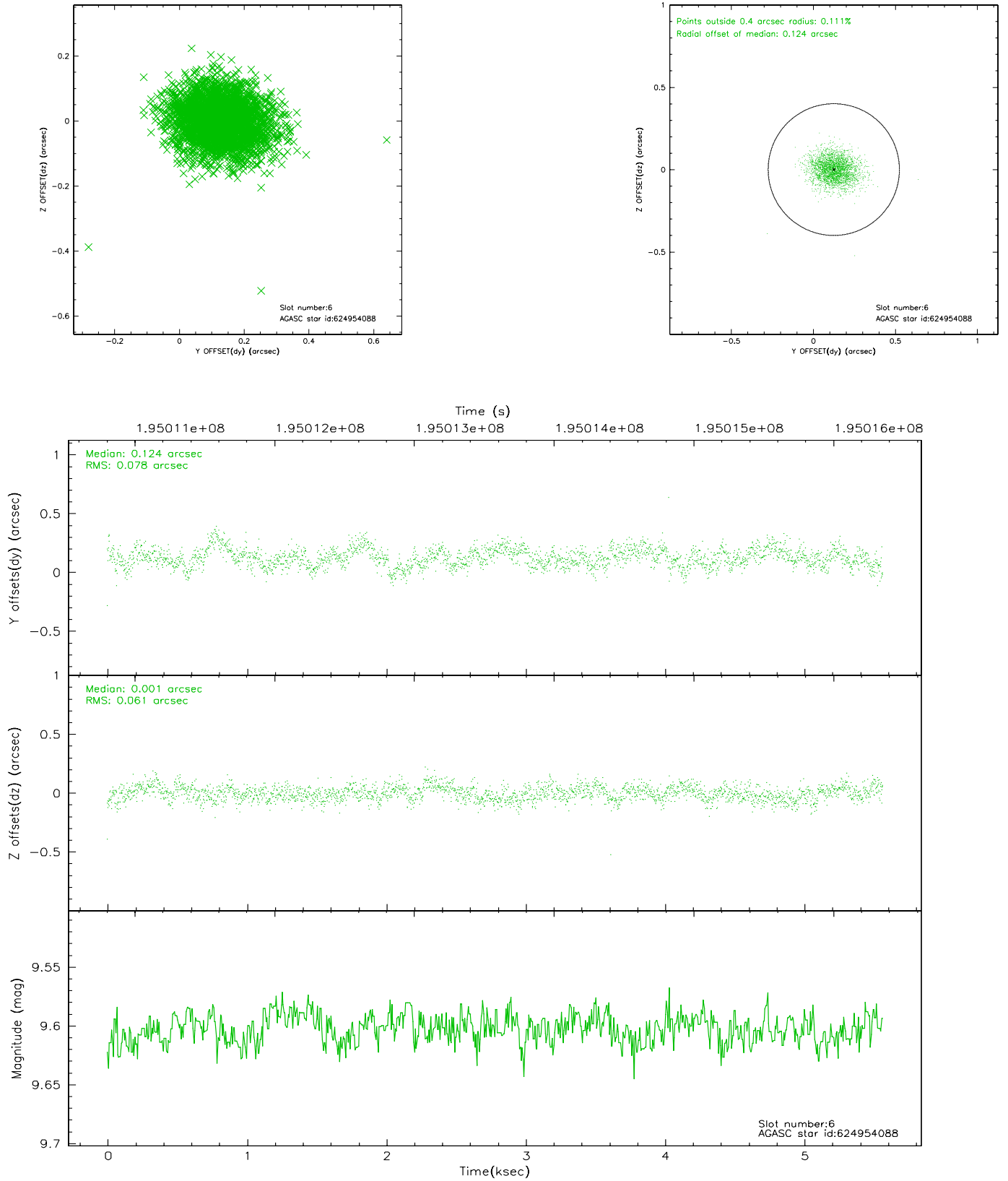
2.4.2 Slot 4



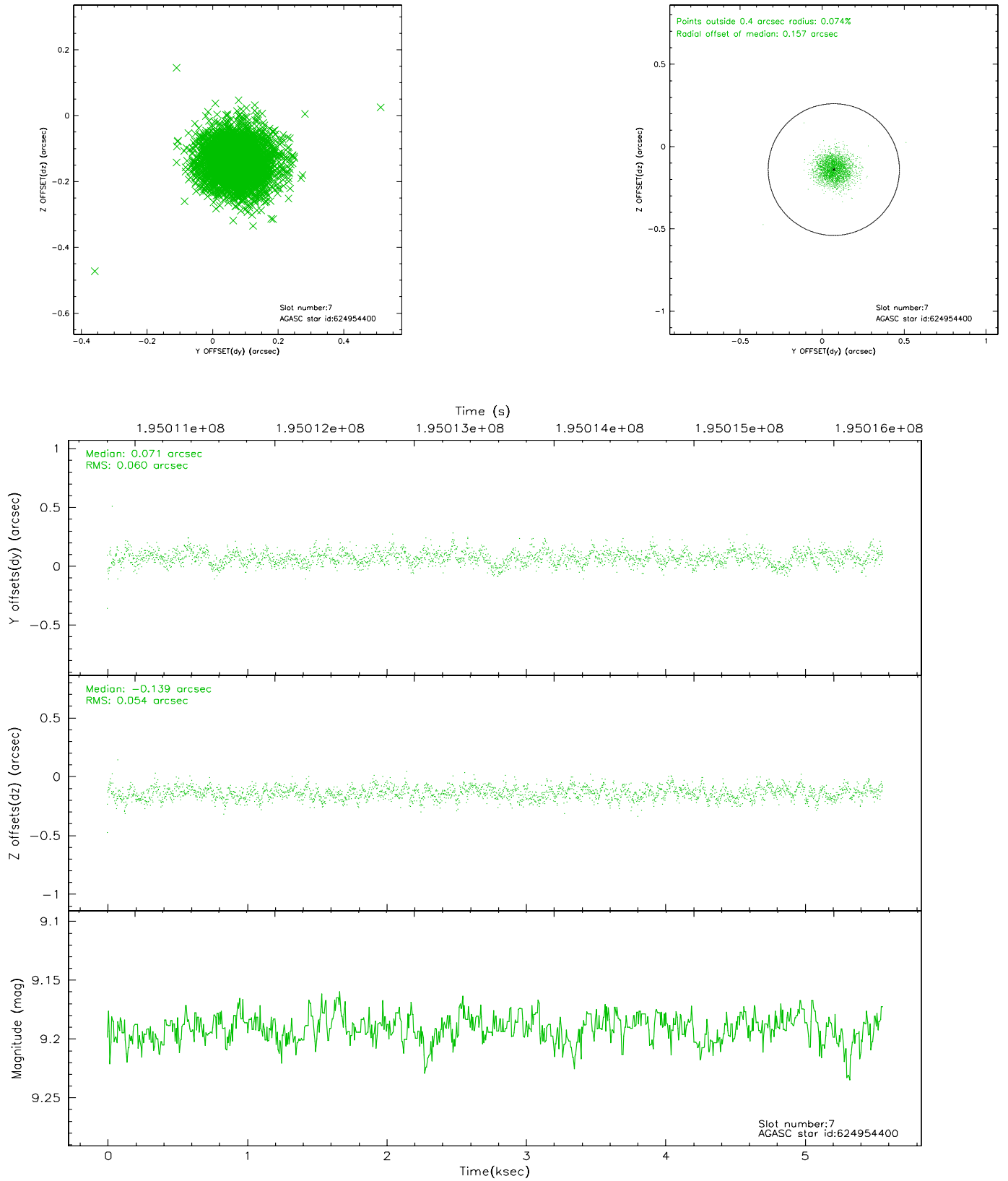
2.4.3 Slot 5



2.4.4 Slot 6

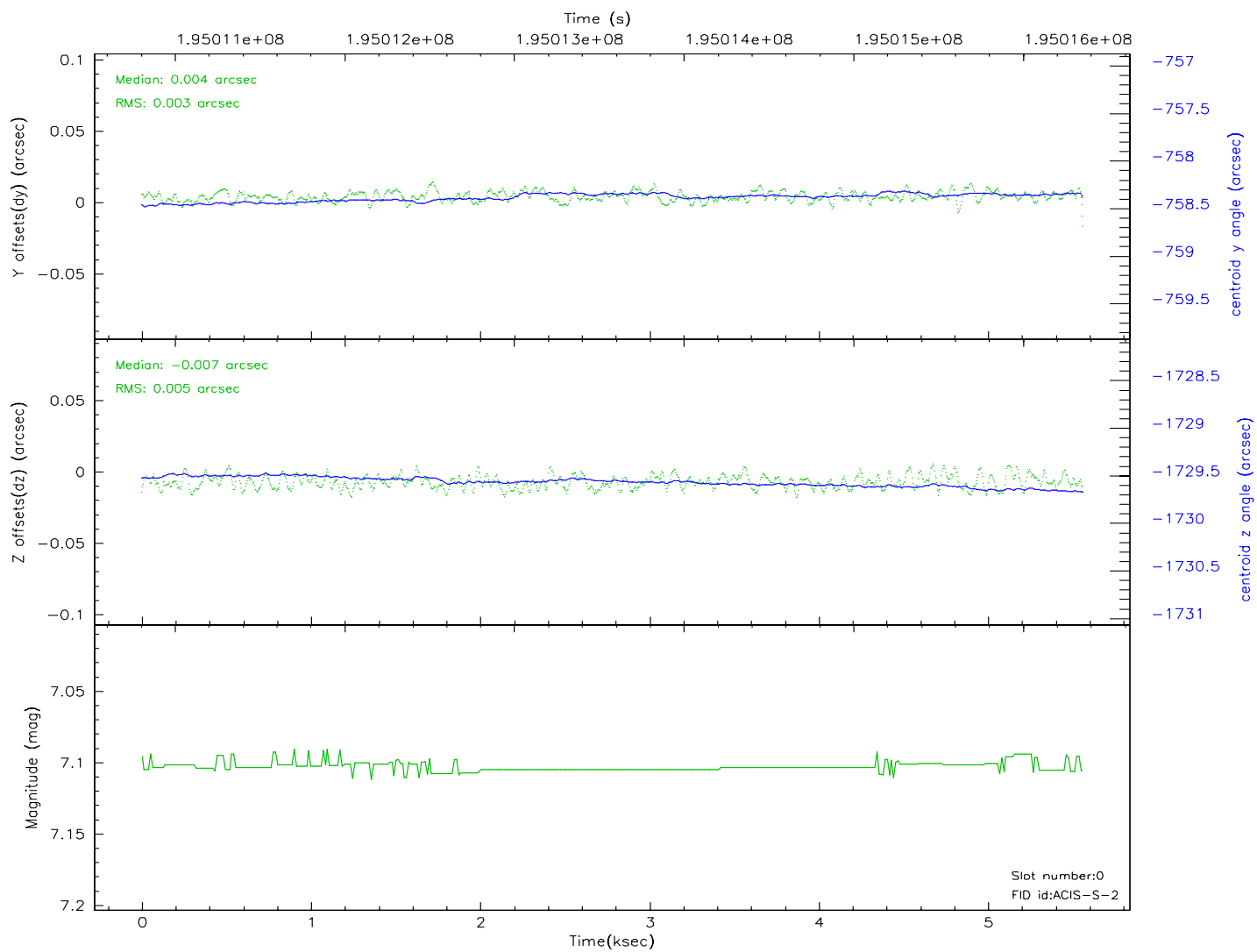
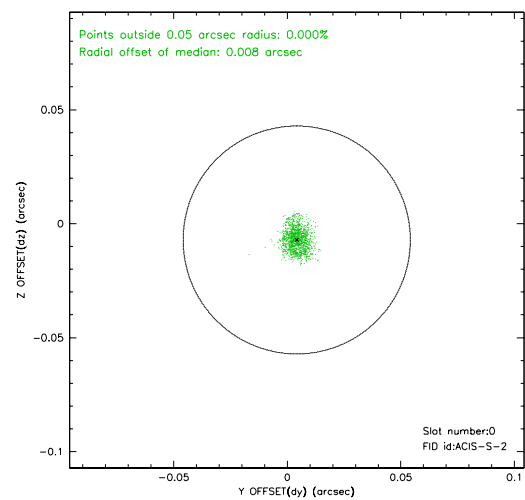
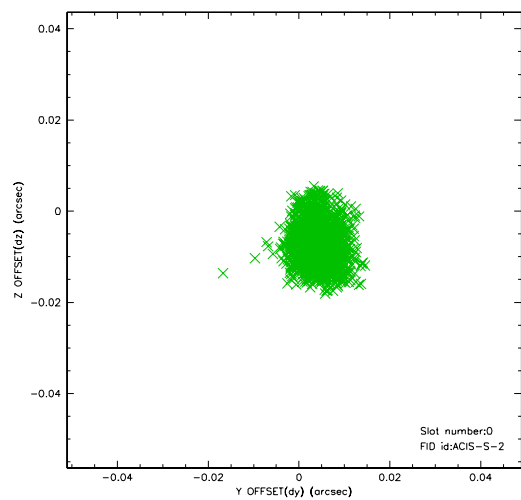


2.4.5 Slot 7

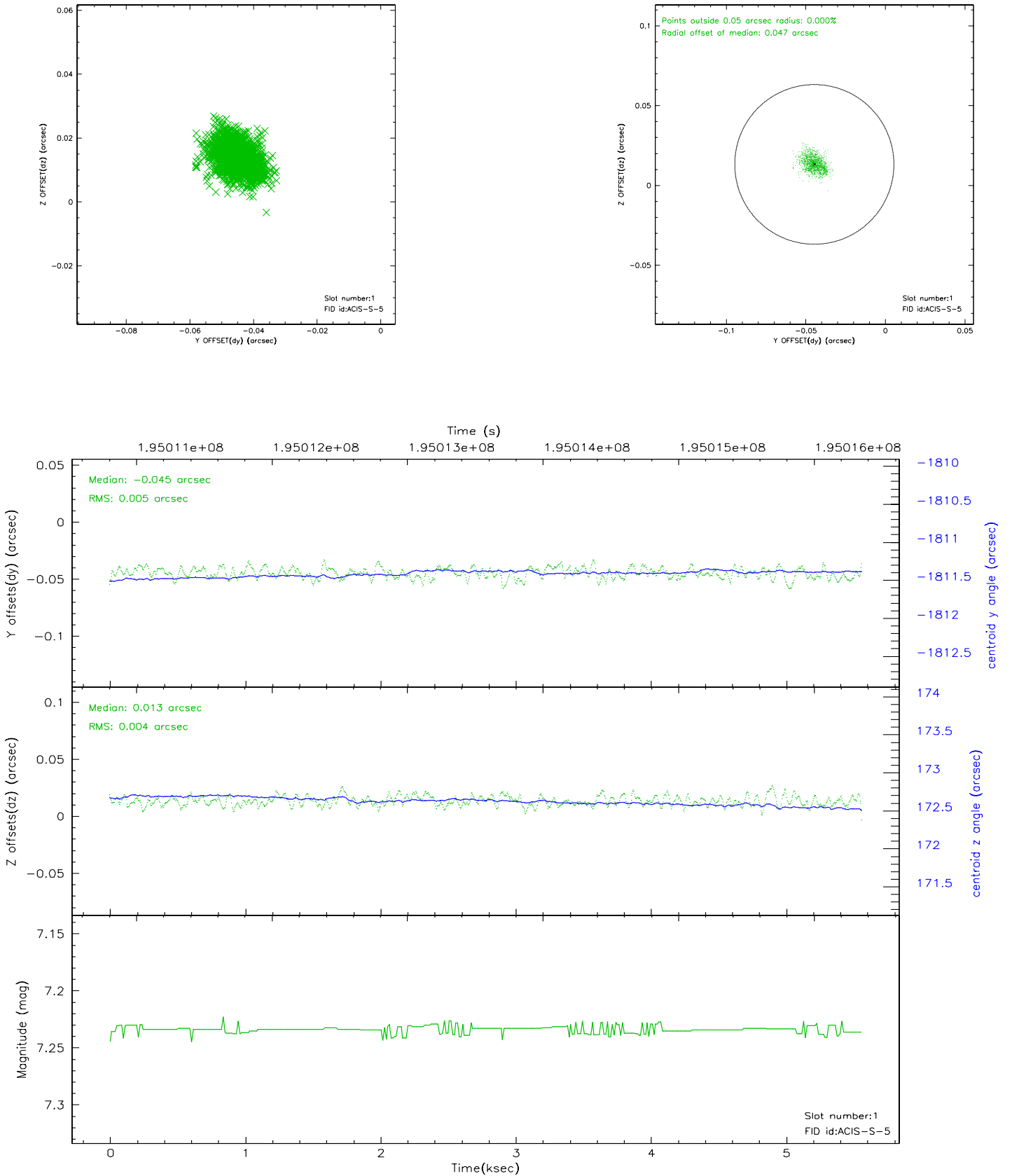


2.5 FID Slots

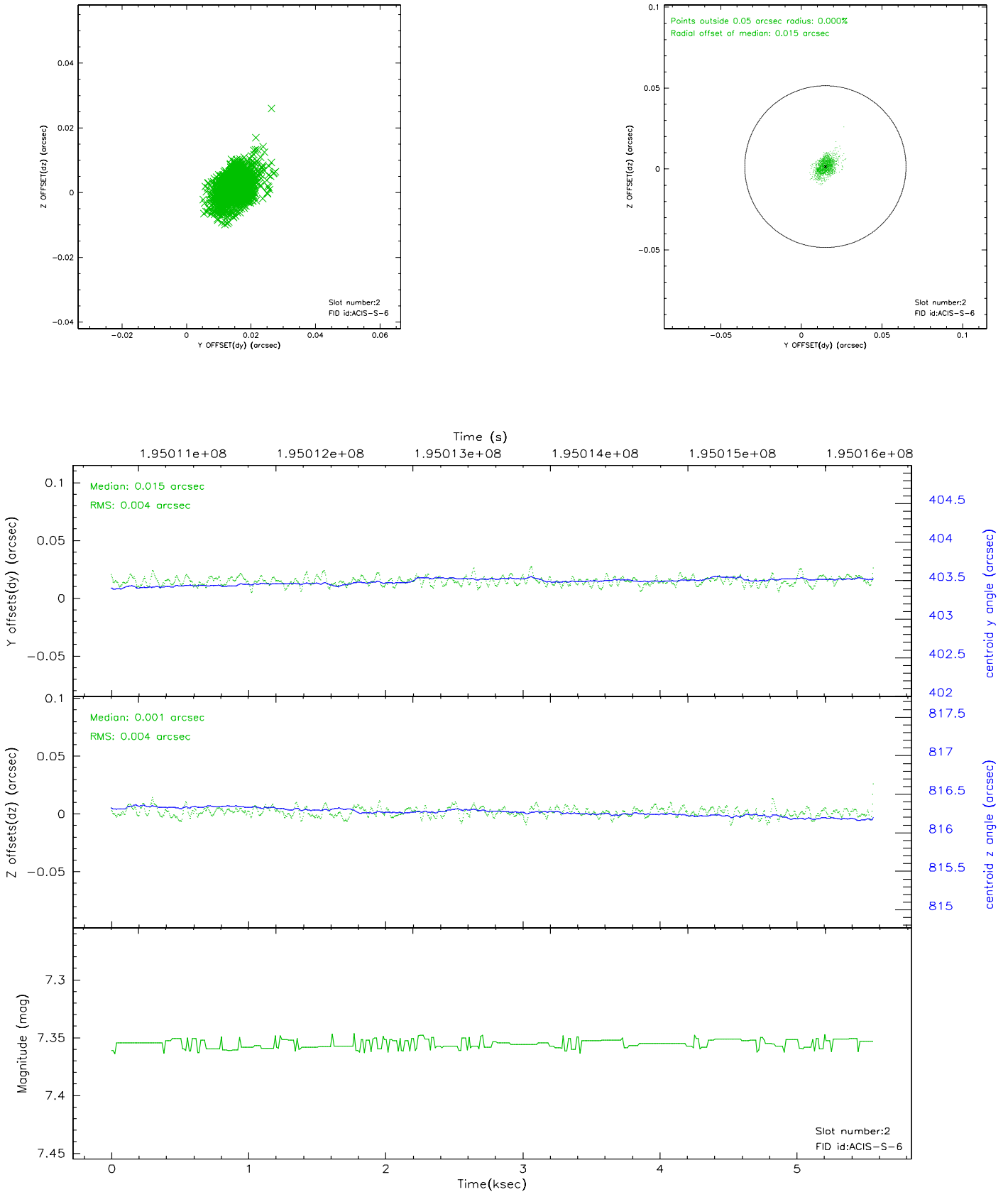
2.5.1 Slot 0



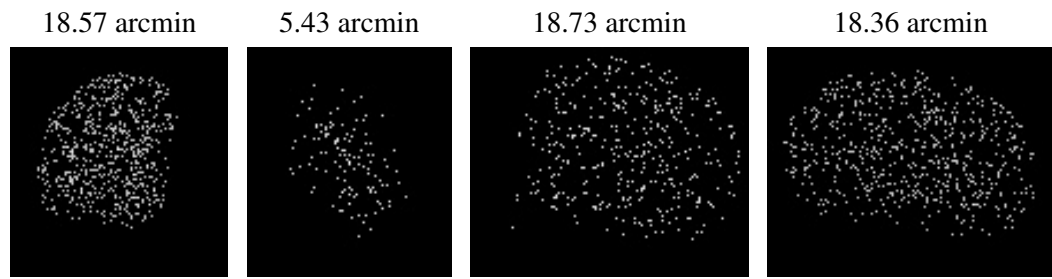
2.5.2 Slot 1



2.5.3 Slot 2



3 Point Sources



A Summary

A.1 Status

V&V Scientist	Jen Lauer
V&V Date (YYYY-MM-DD)	2006.05.31
V&V Edition	1
V&V Disposition and Status	OK
V&V Charge Time	5.561

A.2 Comments