

# V&V Reference Report

## L2 ASCDS Version : 7.6.8

Observation 5185 - L2 Version 001  
Chandra X-Ray Center

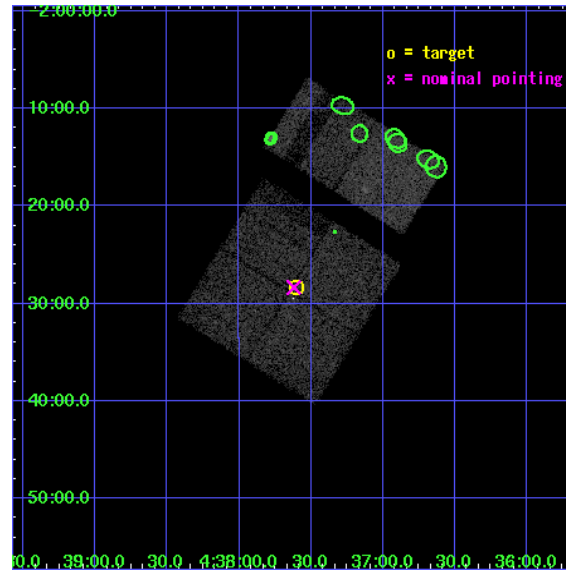
L2 Processing Date : Jun 26 2006

## Contents

<b>1</b>	<b>Front</b>	<b>2</b>
<b>2</b>	<b>OBI</b>	<b>3</b>
2.1	OBI . . . . .	3
2.1.1	Images . . . . .	3
2.1.2	Bias . . . . .	3
2.1.3	Parameters . . . . .	4
2.1.4	Events . . . . .	4
2.2	Compared Parameters . . . . .	5
2.3	Aspect . . . . .	6
2.4	Star Slots . . . . .	9
2.4.1	Slot 3 . . . . .	9
2.4.2	Slot 4 . . . . .	10
2.4.3	Slot 5 . . . . .	11
2.4.4	Slot 6 . . . . .	12
2.4.5	Slot 7 . . . . .	13
2.5	FID Slots . . . . .	14
2.5.1	Slot 0 . . . . .	14
2.5.2	Slot 1 . . . . .	15
2.5.3	Slot 2 . . . . .	16
<b>3</b>	<b>Point Sources</b>	<b>17</b>
<b>A</b>	<b>Summary</b>	<b>18</b>
A.1	Status . . . . .	18
A.2	Comments . . . . .	18

# 1 Front

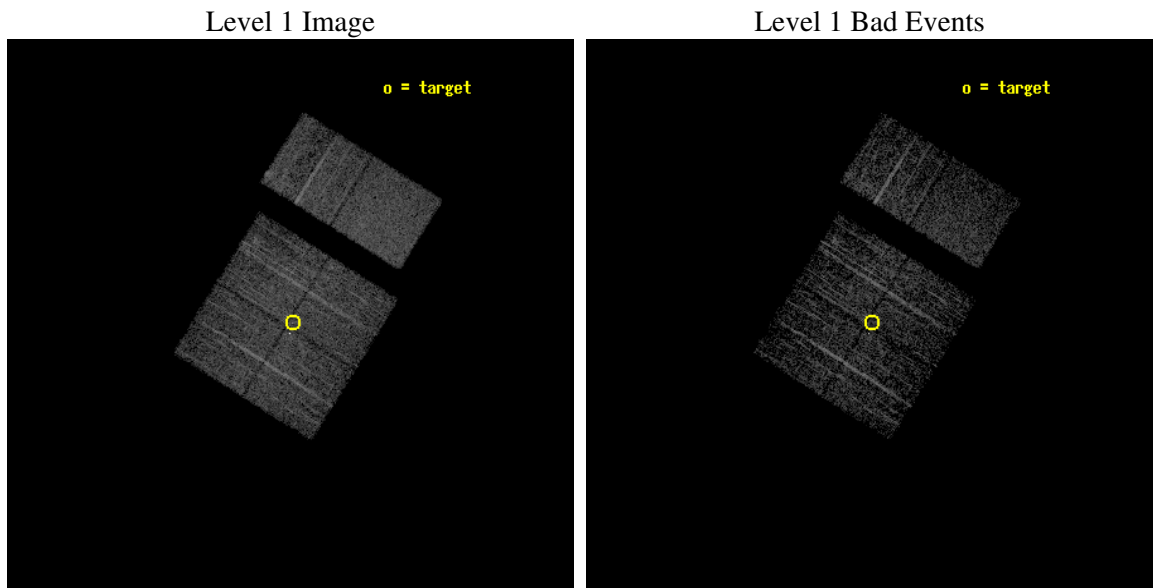
seq_num	200293
obs_id	5185
title	Search for beta Pic analogs
observer	Professor Gordon Garmire
object	51 Eri
dtcycle	0
cycle	P
ra_targ	69.400417
dec_targ	-2.473333
ra_nom	69.40484408734
dec_nom	-2.4725354416454
roll_nom	31.949185416278
revision	2
ontime	3187.1999881268
livetime	3146.8417427757
ontime0	3187.1999881268
ontime1	3187.1999881268
ontime2	3187.1999881268
ontime3	3187.1999881268
ontime6	3187.1999881268
ontime7	3187.1999881268
l2events	46780



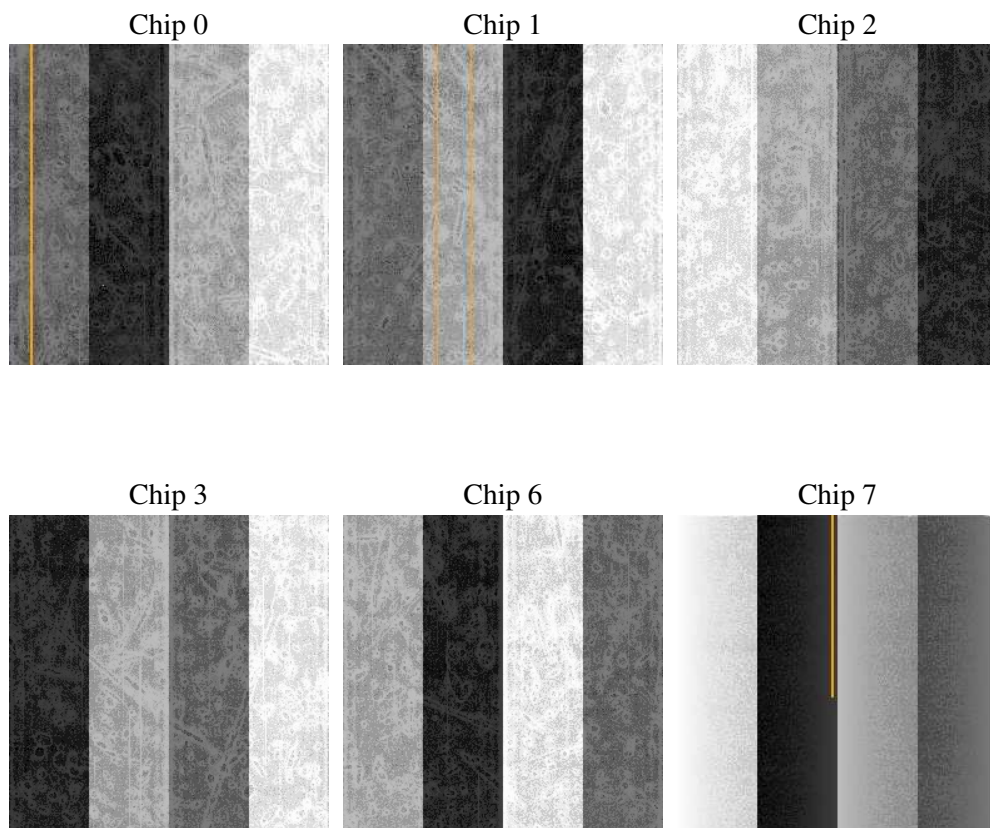
## 2 OBI

### 2.1 OBI

#### 2.1.1 Images



#### 2.1.2 Bias



### 2.1.3 Parameters

obi_num	0
ascdsver	7.6.8
caldsver	3.2.2
date	2006-06-26T15:38:45
revision	2

sched_exp_time	3000.000000
ontime	3840.5969766676
ontime0	3840.5969766676
ontime1	3840.5969766676
ontime2	3840.5969766676
ontime3	3840.5969766676
ontime6	3840.5969766676
ontime7	3840.5969766676
l1events	175201

### 2.1.4 Events

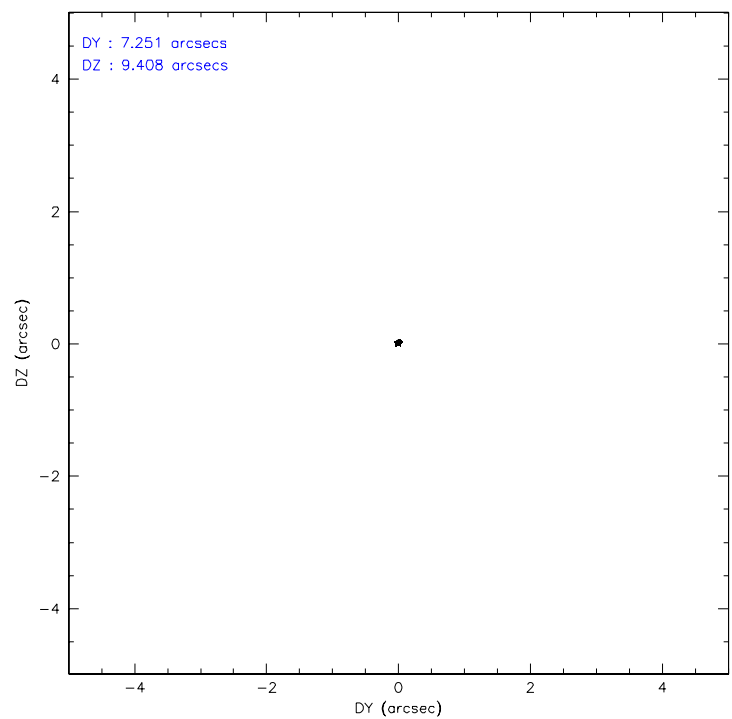
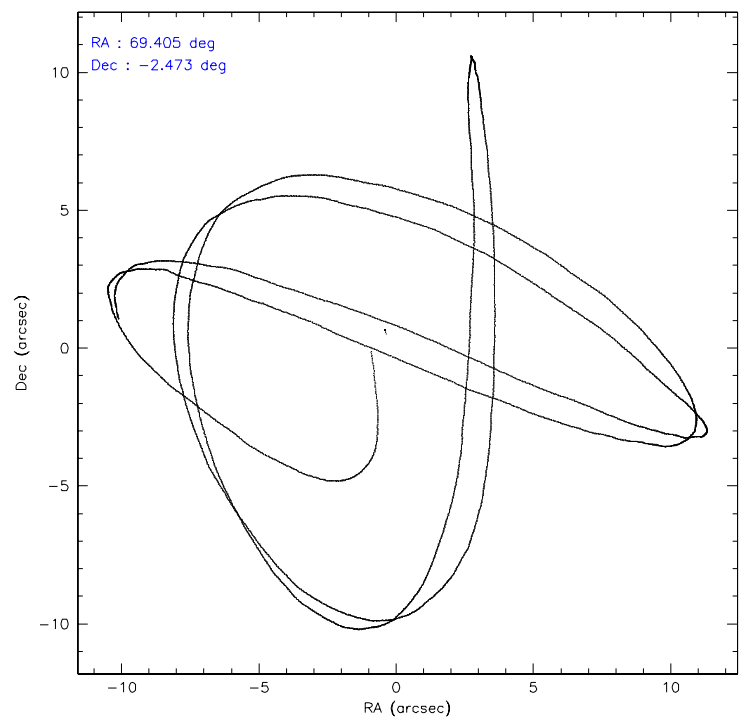
	ccd 0	ccd 1	ccd 2	ccd 3	ccd 6	ccd 7
level 1 events	26838	28785	29233	27629	30073	32643
rejected events	19232	20019	22312	19730	22221	20892
rejected %	71%	69%	76%	71%	73%	64%

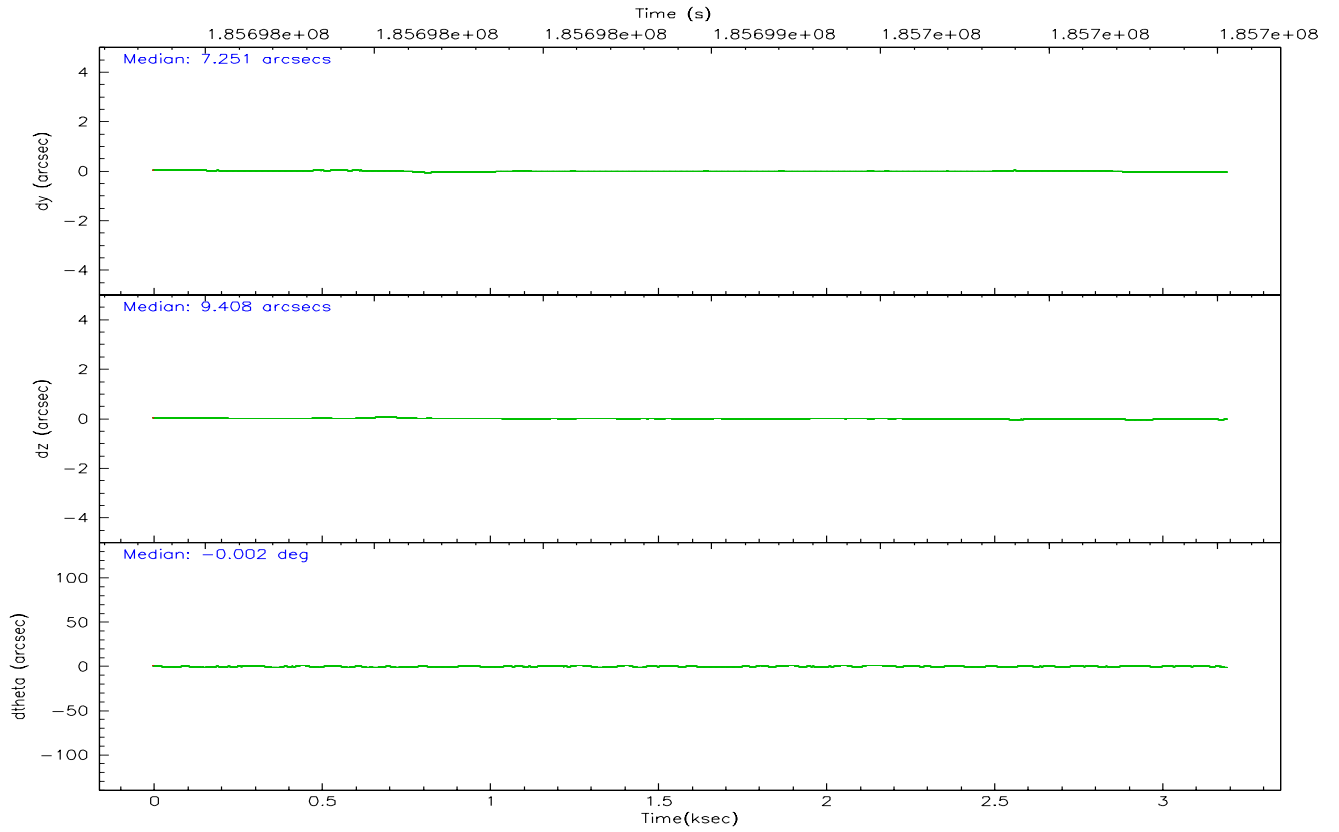
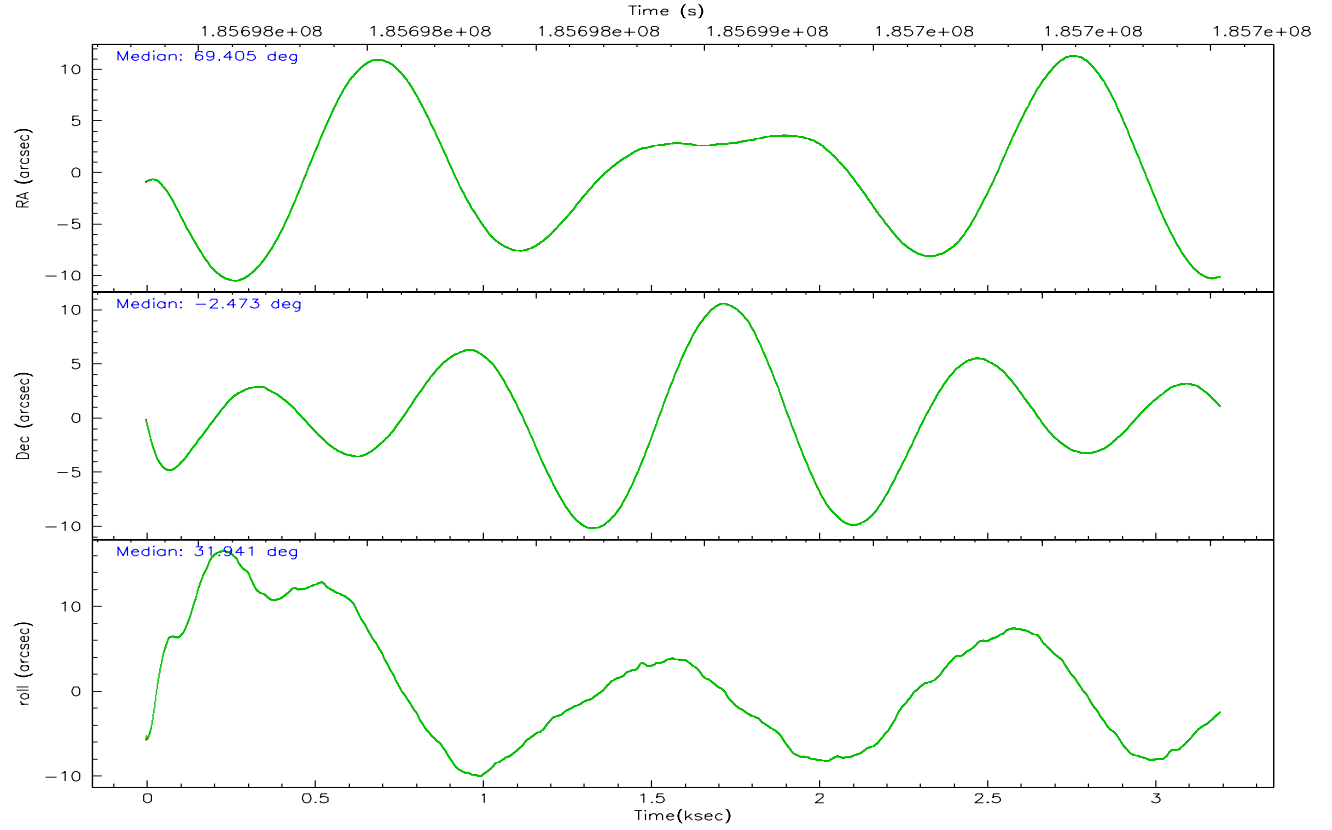
	ccd 0	ccd 1	ccd 2	ccd 3	ccd 6	ccd 7
grade 0 events	4122	4060	3939	4081	4203	1004
	15%	14%	13%	14%	13%	3%
grade 1 events	19	125	25	17	24	22
	0%	0%	0%	0%	0%	0%
grade 2 events	2772	3716	2084	3162	3343	3521
	10%	12%	7%	11%	11%	10%
grade 3 events	350	441	312	369	342	809
	1%	1%	1%	1%	1%	2%
grade 4 events	360	390	444	346	341	734
	1%	1%	1%	1%	1%	2%
grade 5 events	853	946	818	938	1023	2048
	3%	3%	2%	3%	3%	6%
grade 6 events	1773	2079	1702	1693	1485	8193
	6%	7%	5%	6%	4%	25%
grade 7 events	16589	17028	19909	17023	19312	16312
	61%	59%	68%	61%	64%	49%

## 2.2 Compared Parameters

Parameter	Planned	Actual	Parameter	Planned	Actual
Instrument	ACIS	ACIS	Obspar format version number	6	6
Detector	ACIS-012367	ACIS-012367	Obspar file type	PREDICTED	ACTUAL
Grating	NONE	NONE	Obspar update status	NONE	UPDATED
Data mode	FAINT	FAINT	On-chip summing requested	N	N
Observation mode	POINTING	POINTING	Subarray requested	NONE	NONE
Pointing RA	69.392209	69.40484408733971	Alternating exposures requested	N	N
Pointing Dec	-2.496824	-2.472535441645433	Primary exposure time	0.000000	3.2
Pointing Roll	31.739993	31.9491854162779			
SIM focus pos (mm)	-0.782348	-0.7809083437167272			
SIM defocus (mm)	0	0.001439871863259334			
SIM translation stage pos (mm)	-233.592463	-233.5874344608287			
SIM translation stage offset (mm)	0	-0.005018542100998502			
Observation start time	185697535.184000	185696138.42892			
Observation start date	2003-11-20T06:37:51	2003-11-20T06:15:38			
Observation end time	185700535.184000	185701346.96664			
Observation end date	2003-11-20T07:27:51	2003-11-20T07:42:26			
Read mode	TIMED	TIMED			

## 2.3 Aspect





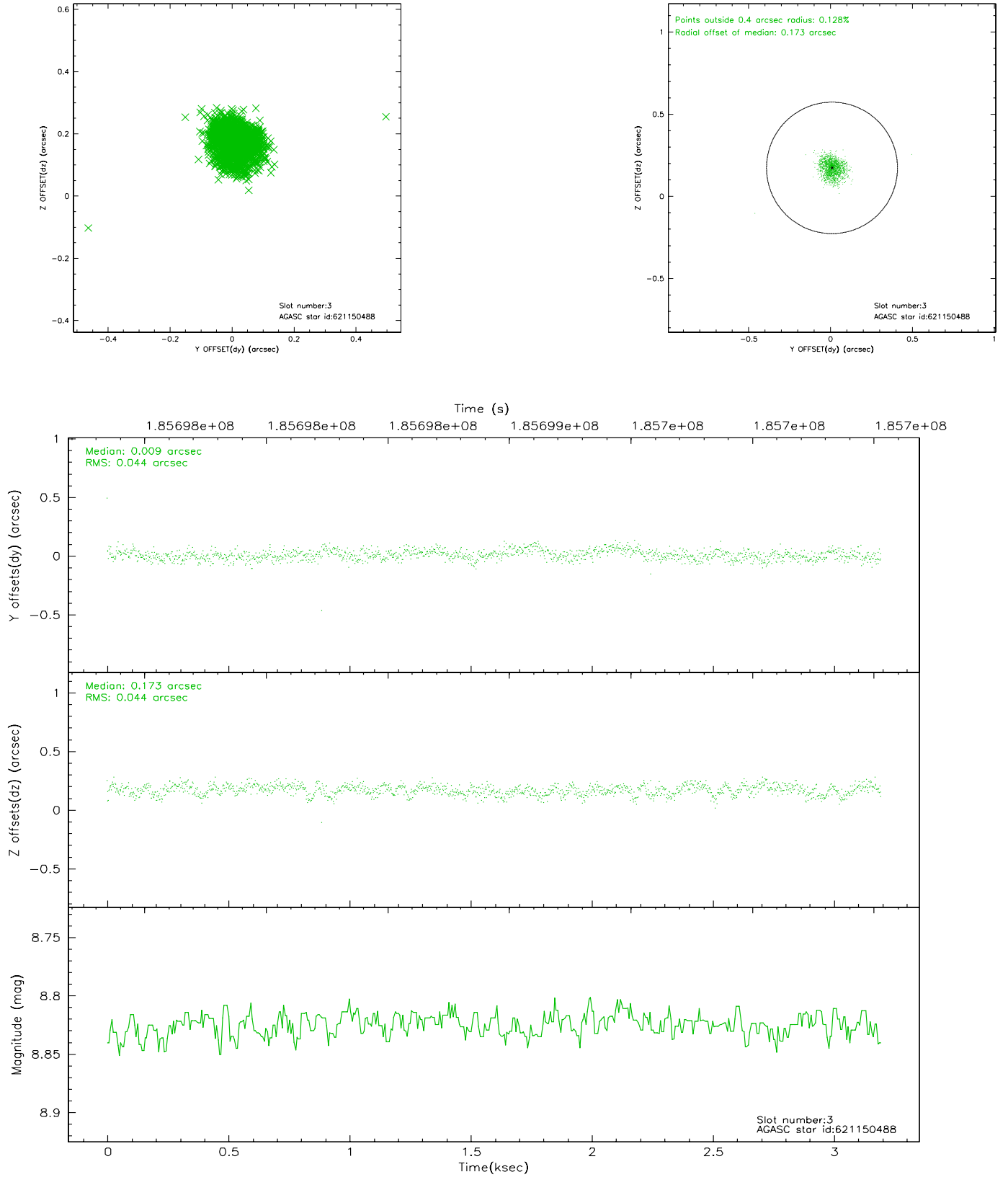
### Slot Statistics

slot	status	id	mag	n_pts	med_dy	med_dz	dr1	dr2	ra	dec	mean_y	mean_z
0	FID	ACIS-I-1	7.24	780	-0.027	0.072	0.006	0.011	0.000000	0.000000	932.40	-832.79
1	FID	ACIS-I-5	7.23	780	-0.109	0.017	0.006	0.010	0.000000	0.000000	-1814.69	1063.64
2	FID	ACIS-I-6	7.26	780	0.044	-0.018	0.006	0.011	0.000000	0.000000	395.85	1710.37
3	GUIDE	621150488	8.82	1559	0.009	0.173	0.065	0.100	69.381004	-2.536201	-107.99	-99.73
4	GUIDE	621151192	9.95	1557	0.036	0.015	0.133	0.232	70.235475	-2.692308	2209.32	-2195.04
5	GUIDE	621152560	8.84	1560	0.058	-0.005	0.063	0.103	69.453503	-2.701542	-197.86	-744.66
6	GUIDE	621154808	7.08	1560	-0.090	-0.107	0.062	0.097	69.428429	-2.646508	-172.03	-527.89
7	GUIDE	621155736	9.56	1559	-0.014	-0.079	0.090	0.151	69.594541	-1.940502	1673.20	1319.58

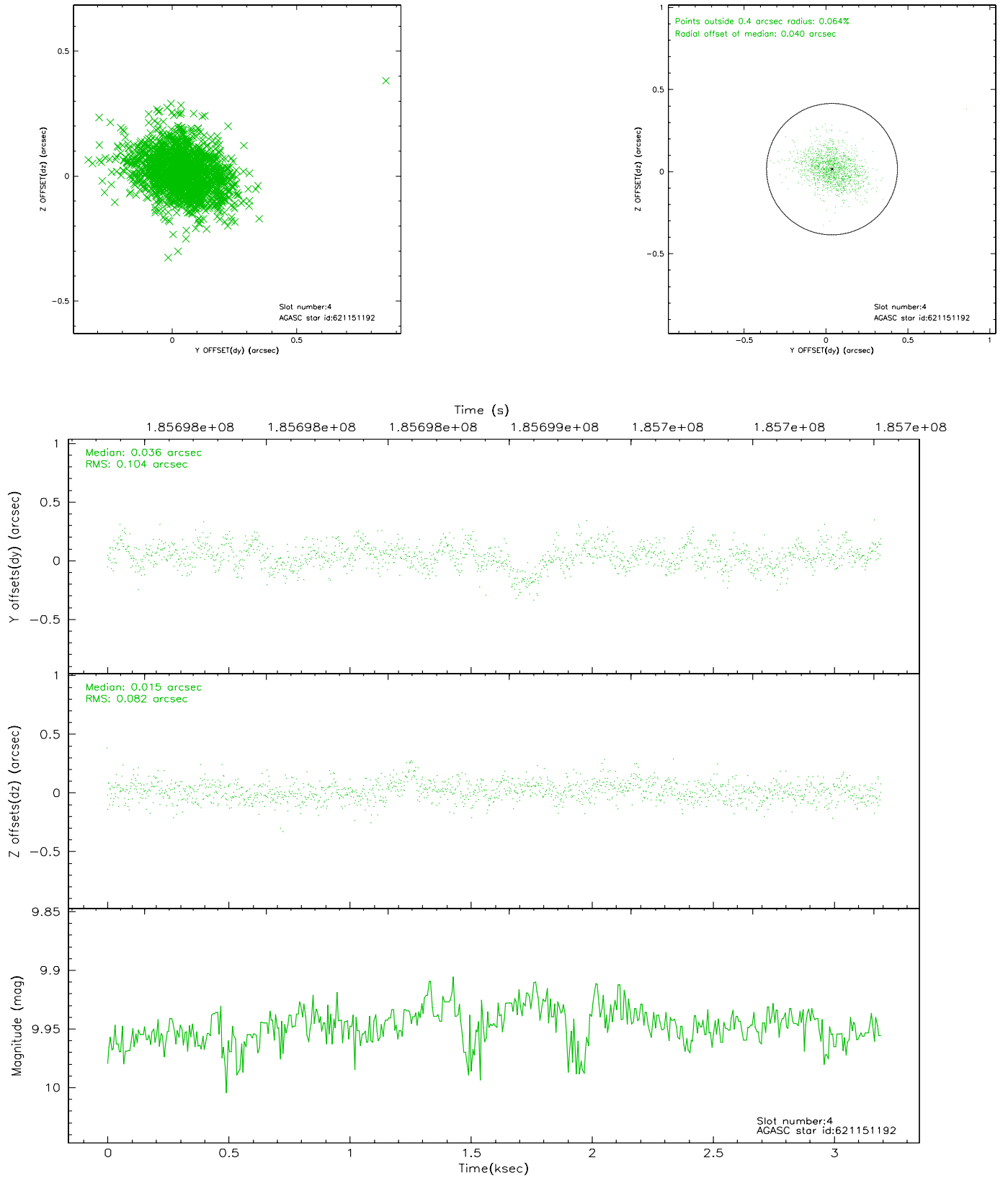


## 2.4 Star Slots

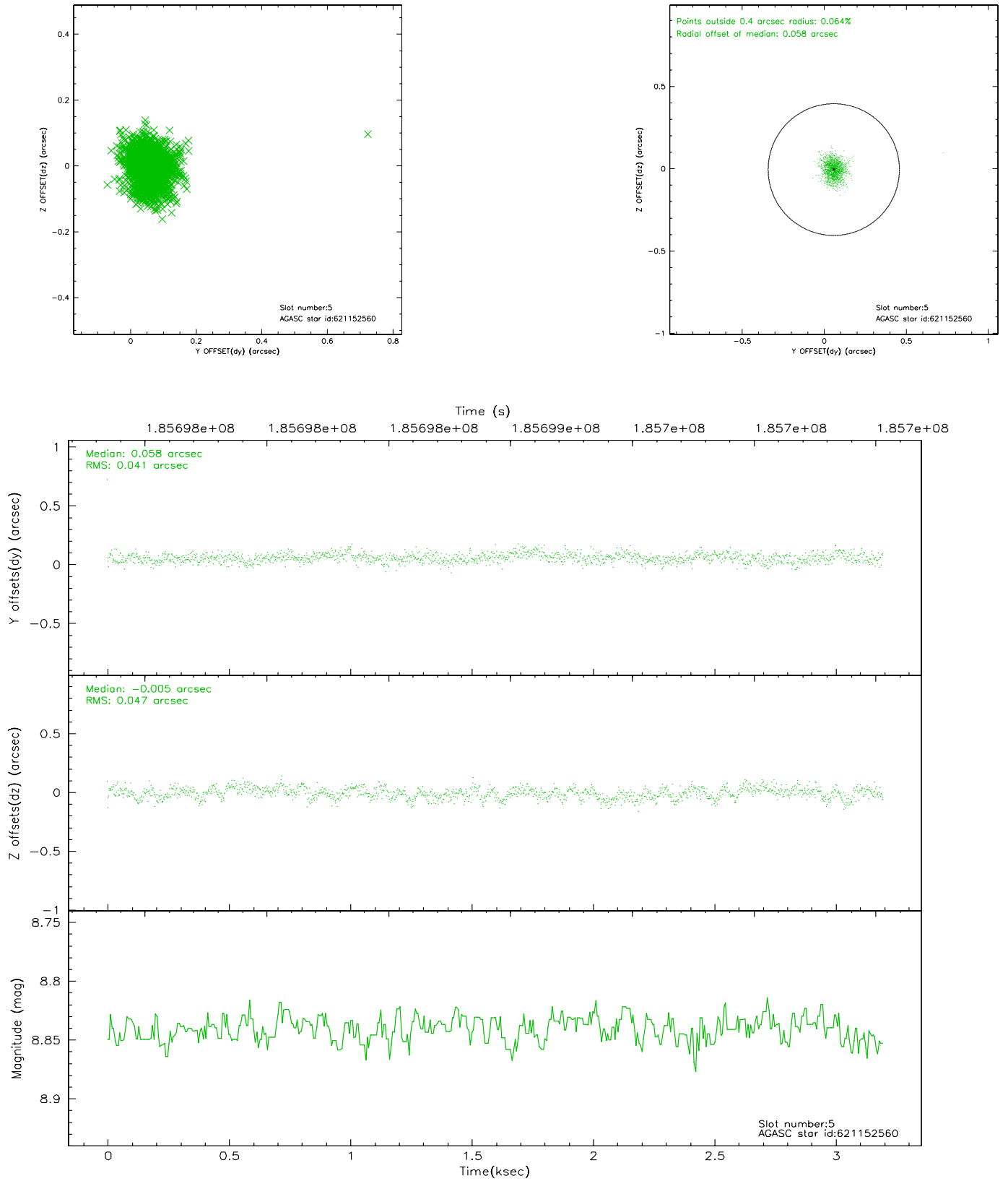
### 2.4.1 Slot 3



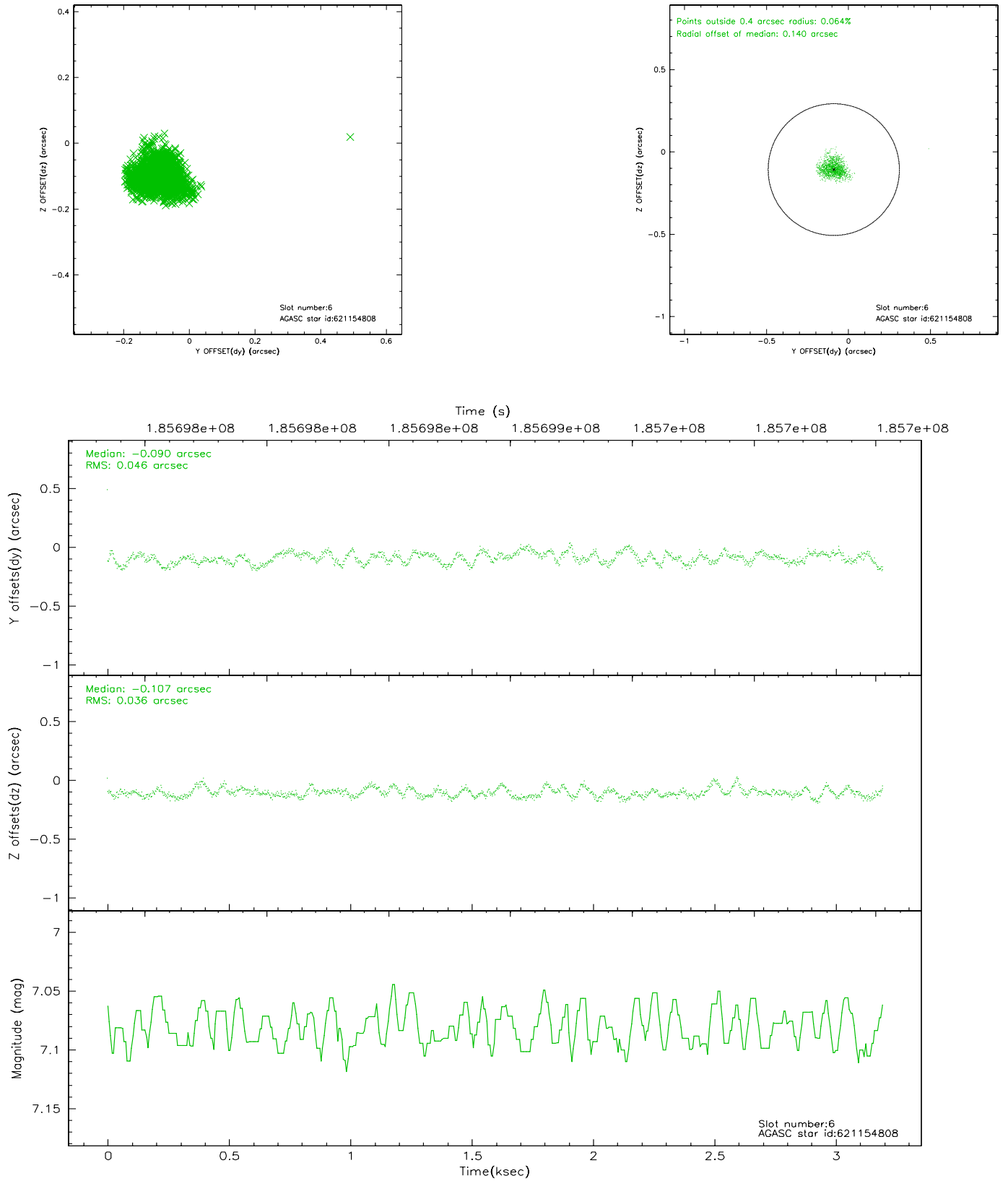
## 2.4.2 Slot 4



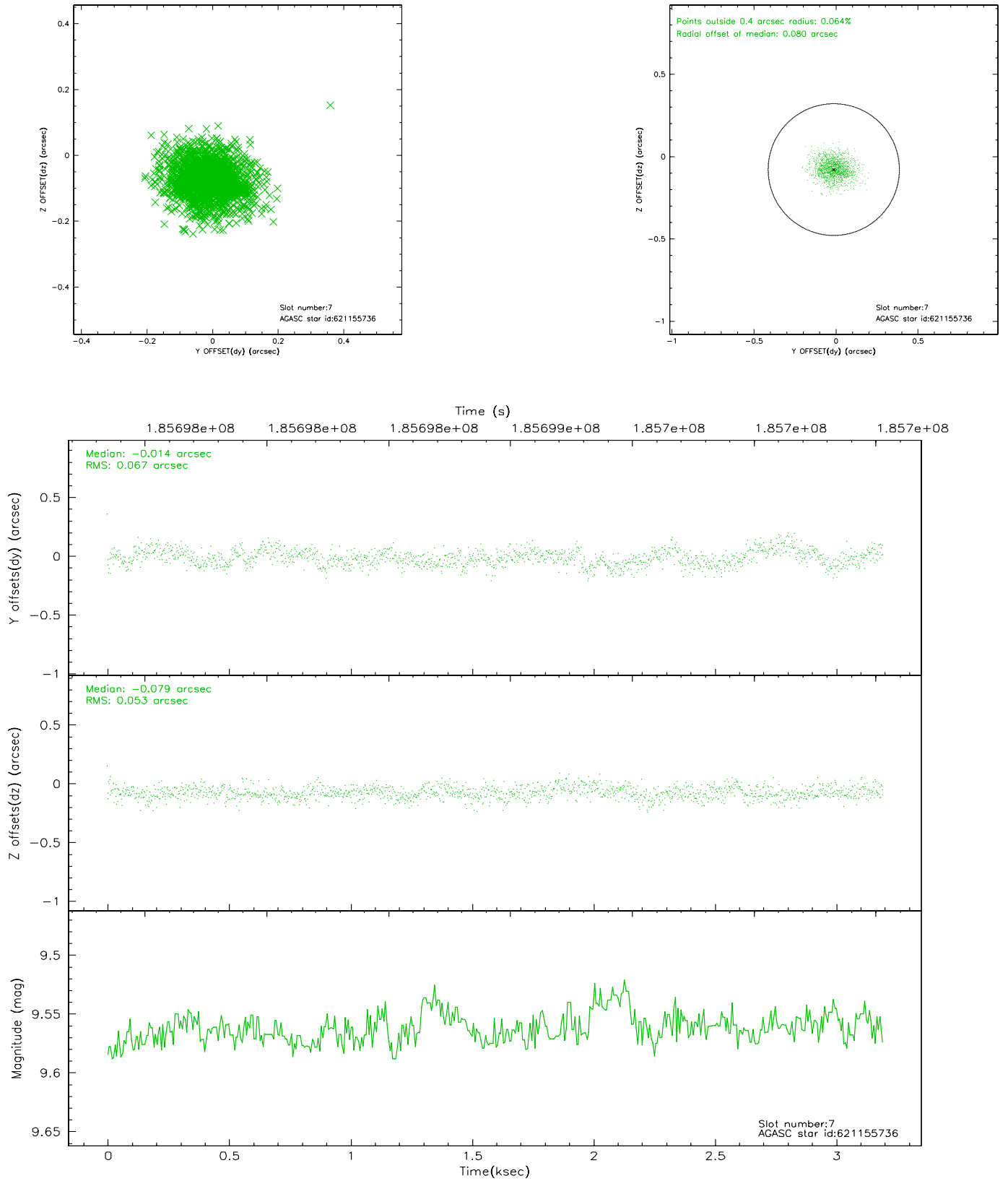
### 2.4.3 Slot 5



## 2.4.4 Slot 6

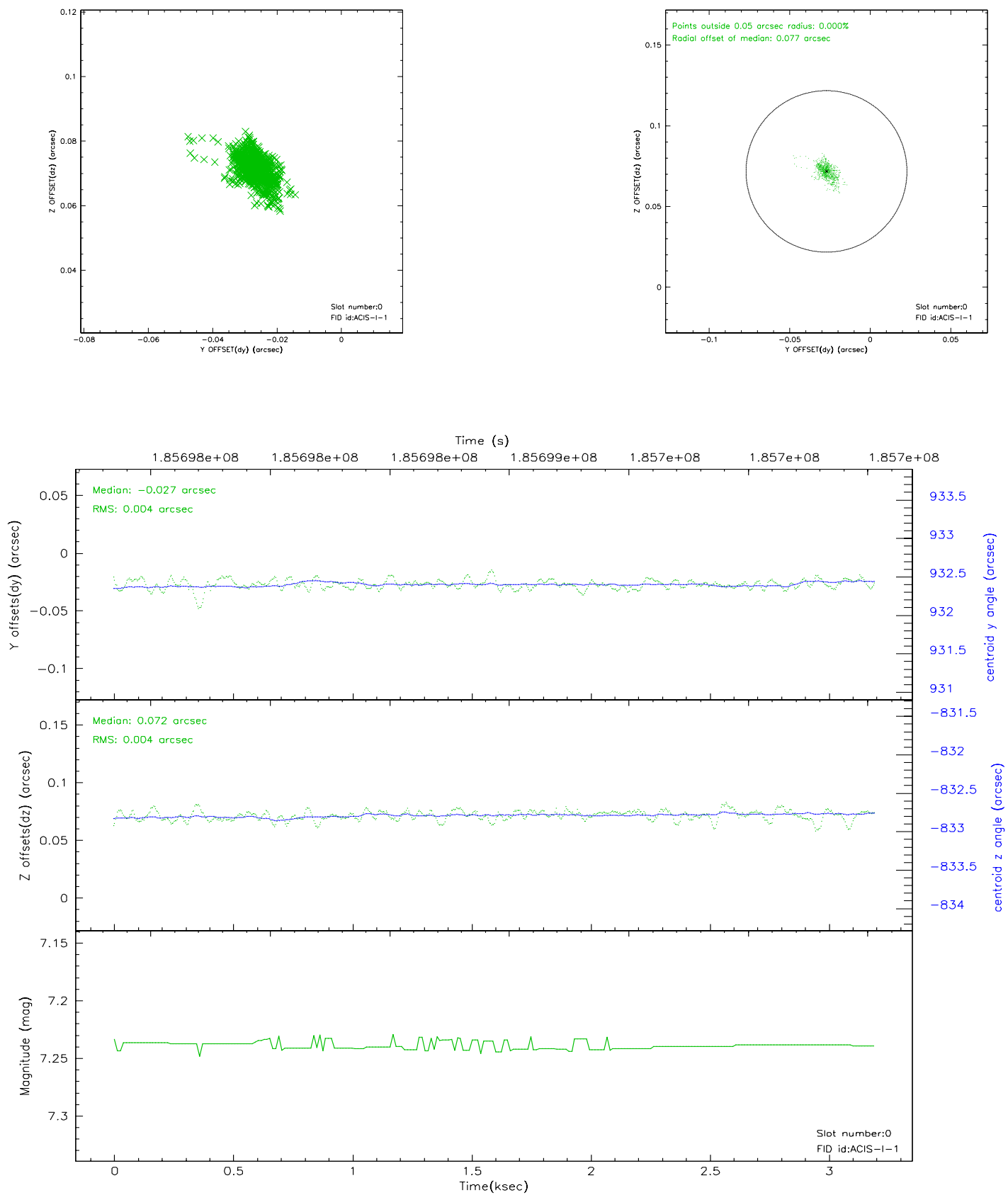


## 2.4.5 Slot 7

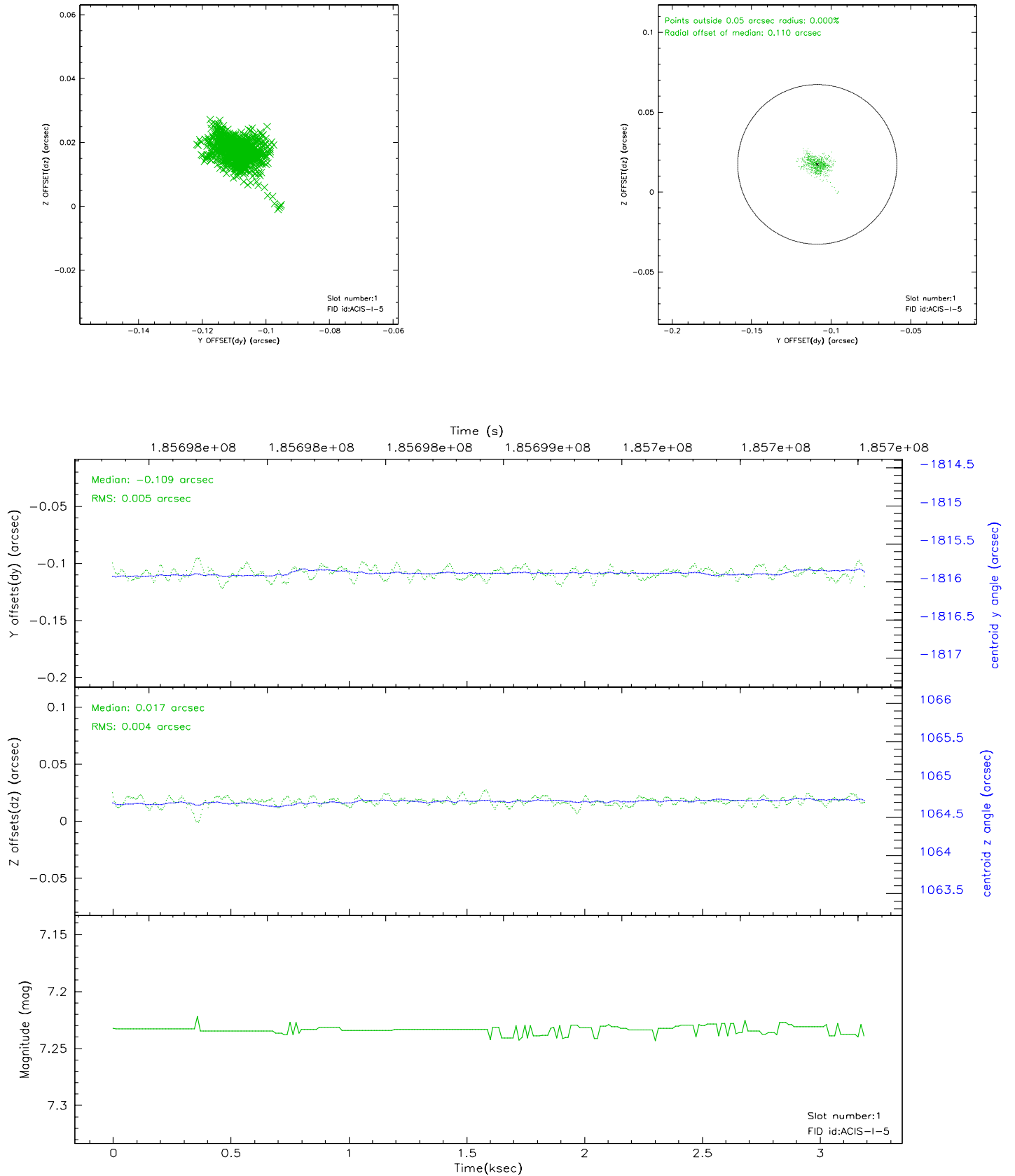


## 2.5 FID Slots

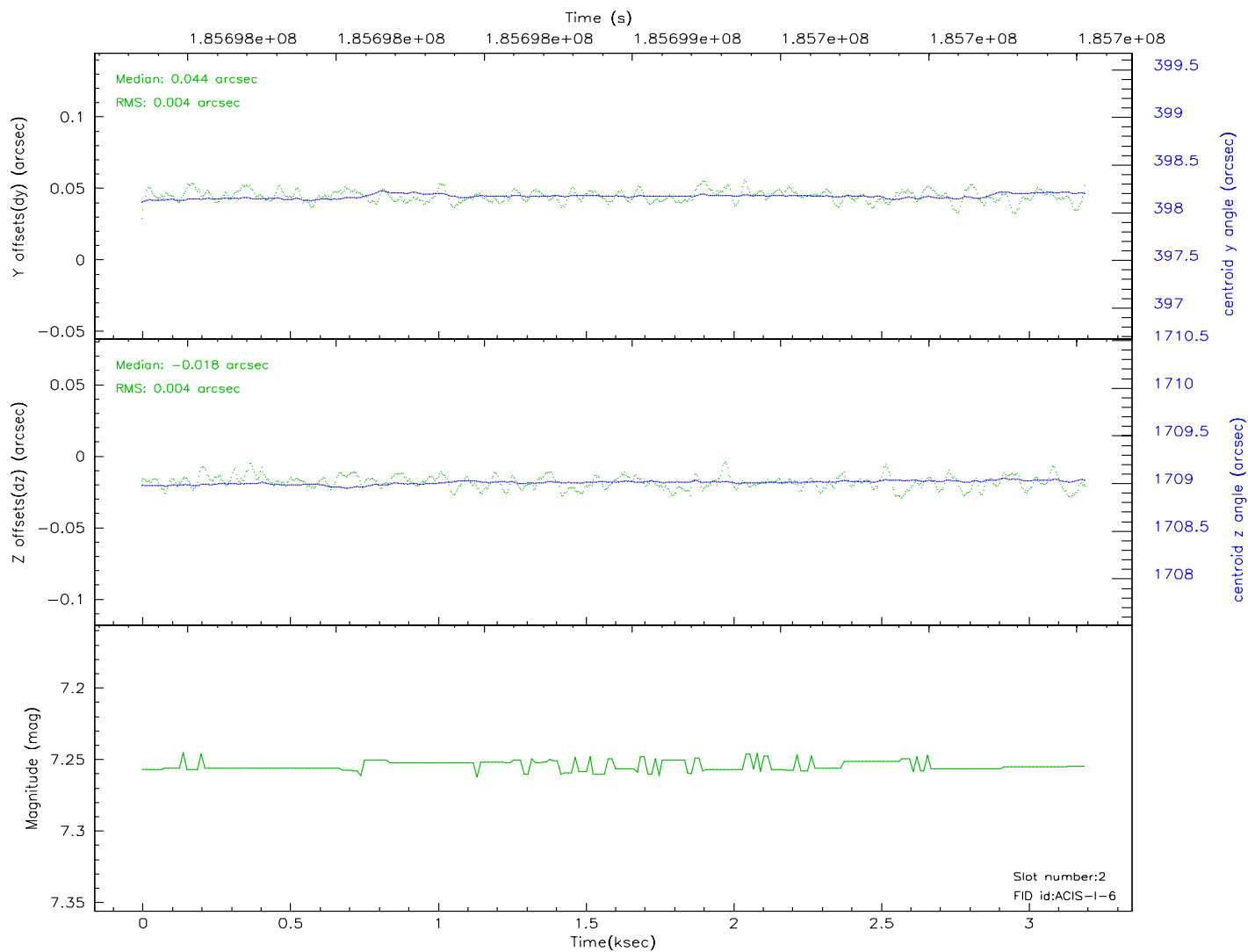
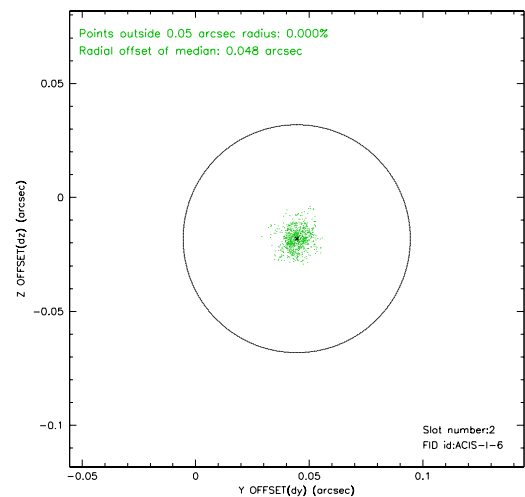
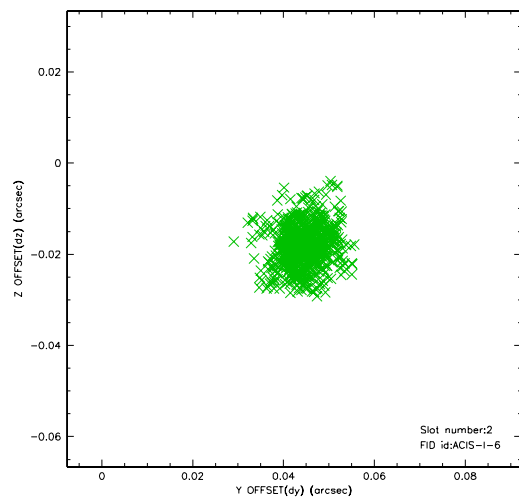
### 2.5.1 Slot 0



## 2.5.2 Slot 1

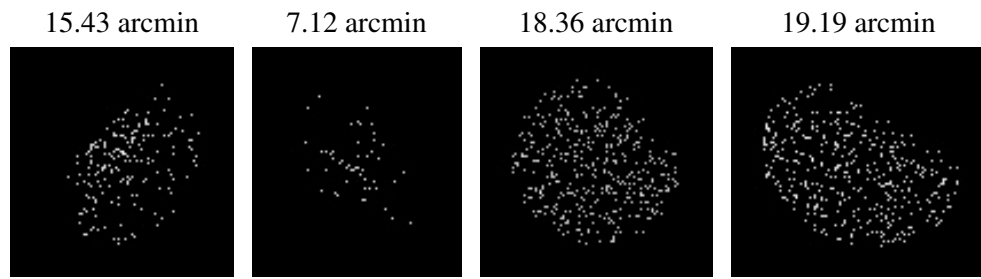


### 2.5.3 Slot 2





### 3 Point Sources



## A Summary

### A.1 Status

V&V Scientist	Jen Lauer
V&V Date (YYYY-MM-DD)	2006.06.26
V&V Edition	1
V&V Disposition and Status	OK
V&V Charge Time	3.187

### A.2 Comments

Source is near chip boundary.