

V&V Reference Report

L2 ASCDS Version : 7.6.7.2

Observation 5176 - L2 Version 001
Chandra X-Ray Center

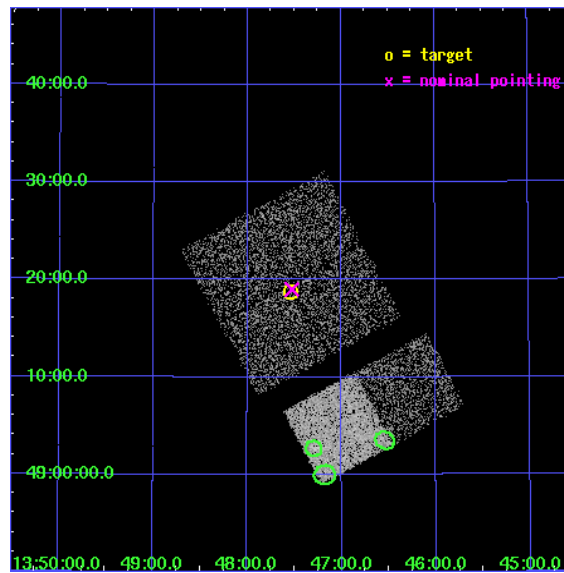
L2 Processing Date : May 27 2006

Contents

1	Front	2
2	OBI	3
2.1	OBI	3
2.1.1	Images	3
2.1.2	Bias	3
2.1.3	Parameters	4
2.1.4	Events	4
2.2	Compared Parameters	5
2.3	Aspect	6
2.4	Star Slots	9
2.4.1	Slot 3	9
2.4.2	Slot 4	10
2.4.3	Slot 5	11
2.4.4	Slot 6	12
2.4.5	Slot 7	13
2.5	FID Slots	14
2.5.1	Slot 0	14
2.5.2	Slot 1	15
2.5.3	Slot 2	16
3	Point Sources	17
A	Summary	18
A.1	Status	18
A.2	Comments	18

1 Front

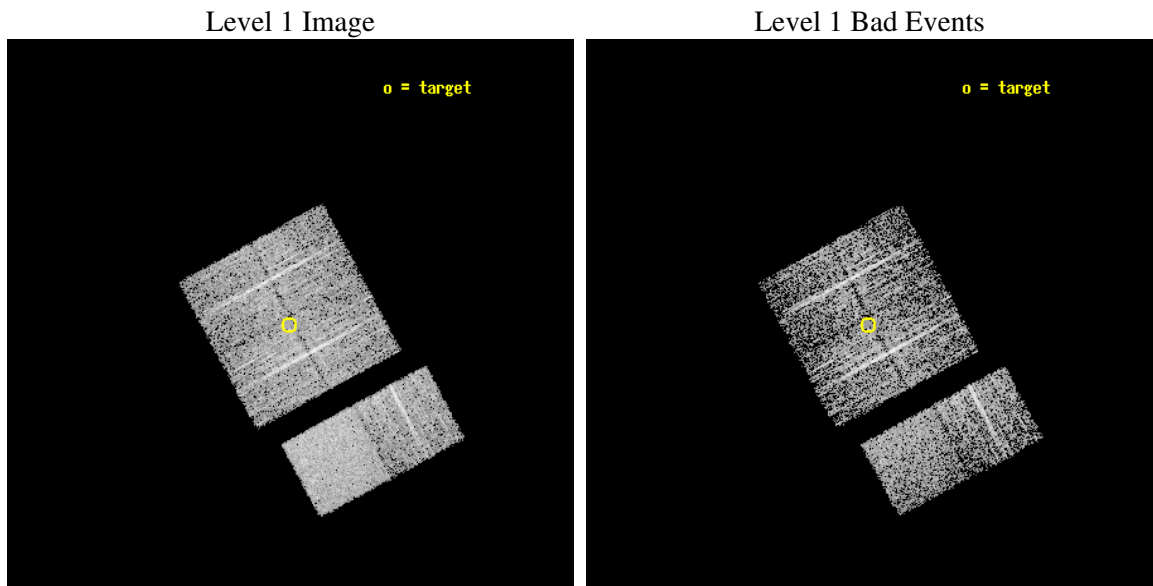
seq_num	200284
obs_id	5176
title	Alternate - Search for beta Pic analogs extension
observer	Professor Gordon Garmire
object	eta UMa
dtcycle	0
cycle	P
ra_targ	206.885833
dec_targ	49.313333
ra_nom	206.88158500631
dec_nom	49.316855996742
roll_nom	151.69291486984
revision	2
ontime	2803.1999895573
livetime	2767.7041834051
ontime0	2803.1999895573
ontime1	2803.1999895573
ontime2	2803.1999895573
ontime3	2803.1999895573
ontime6	2803.1999895573
ontime7	2803.1999895573
l2events	19169



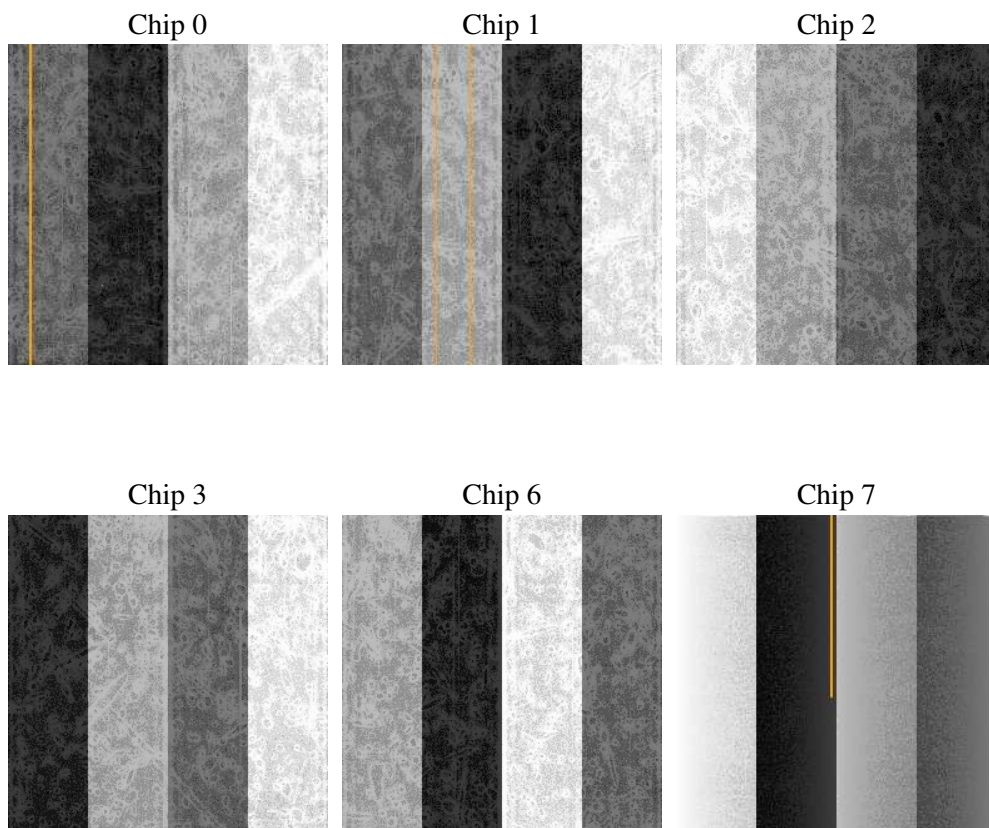
2 OBI

2.1 OBI

2.1.1 Images



2.1.2 Bias



2.1.3 Parameters

obi_num	0
ascdsver	7.6.7.2
caldbver	3.2.2
date	2006-05-27T02:51:29
revision	2

sched_exp_time	3000.000000
ontime	2809.952593565
ontime0	2809.9525736272
ontime1	2809.952593565
ontime2	2809.9525736272
ontime3	2809.952593565
ontime6	2809.952593565
ontime7	2809.952593565
l1events	115348

2.1.4 Events

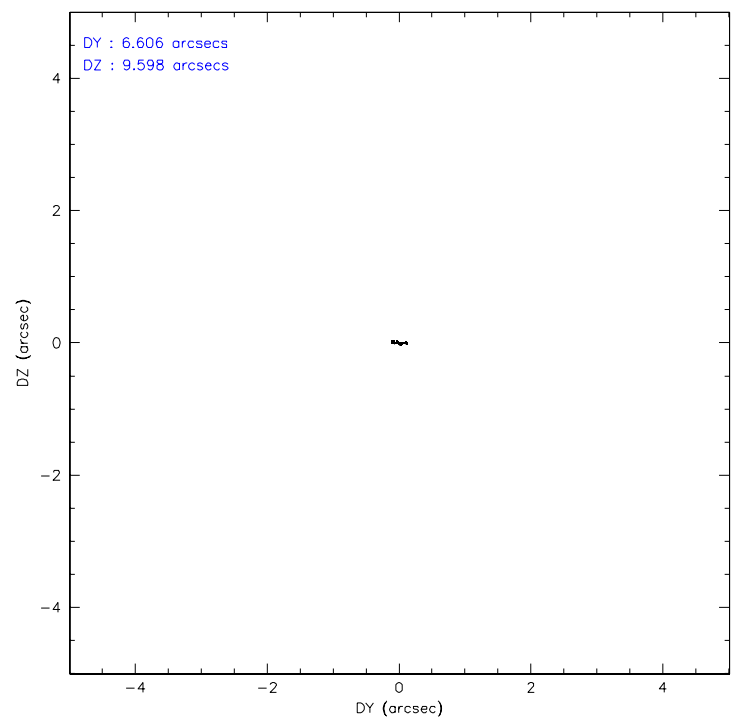
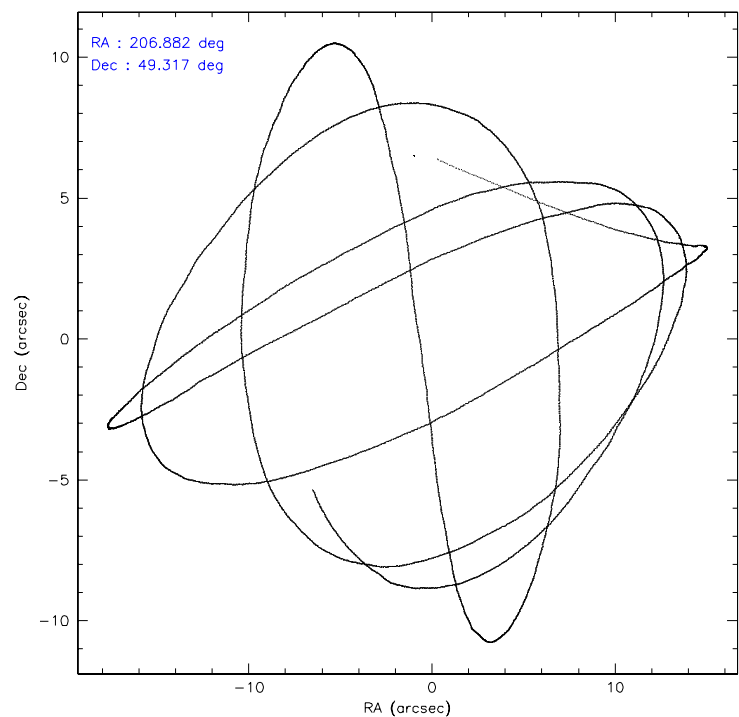
	ccd 0	ccd 1	ccd 2	ccd 3	ccd 6	ccd 7
level 1 events	17125	16557	18040	18994	18655	25977
rejected events	14841	14272	15934	16717	16444	16148
rejected %	86%	86%	88%	88%	88%	62%

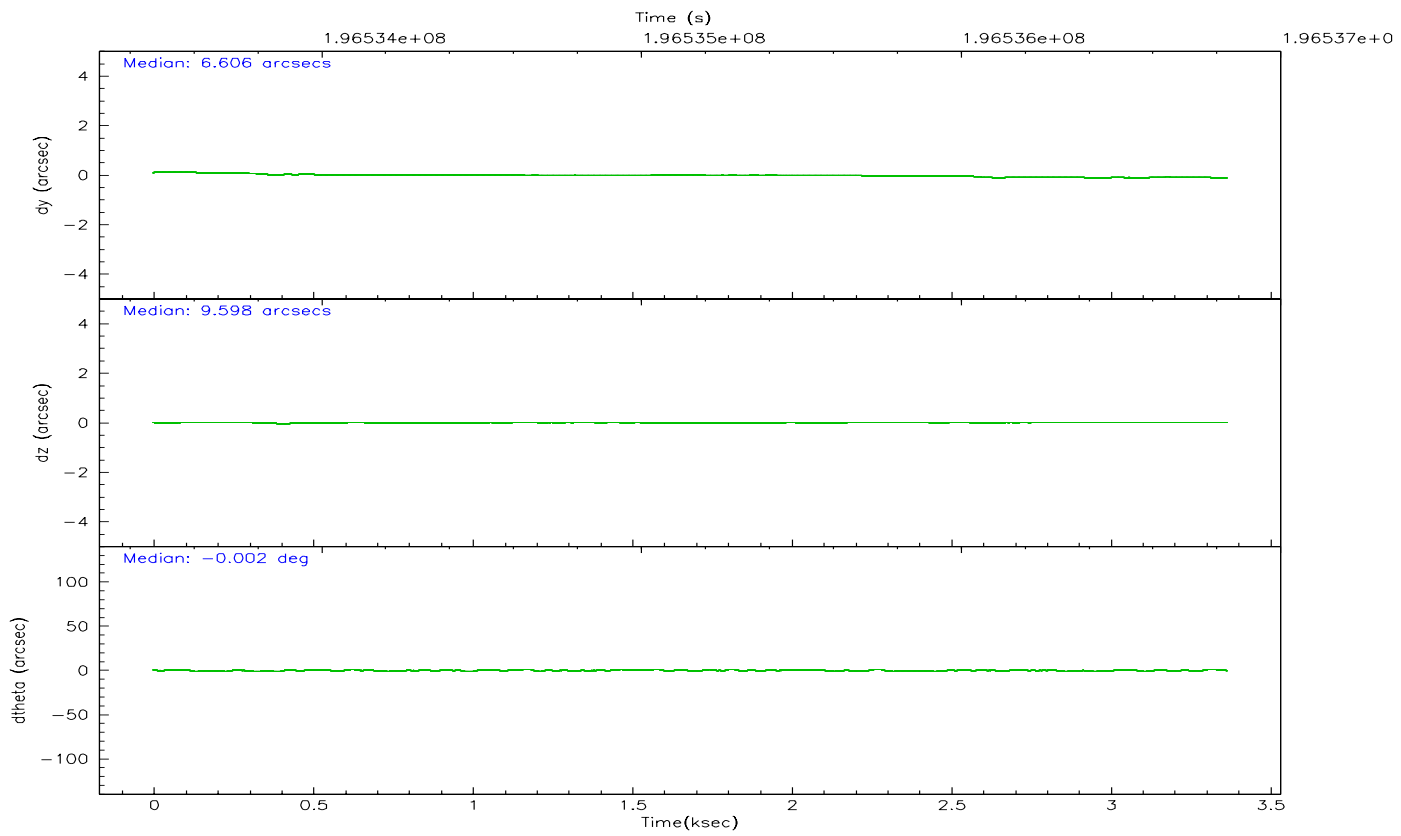
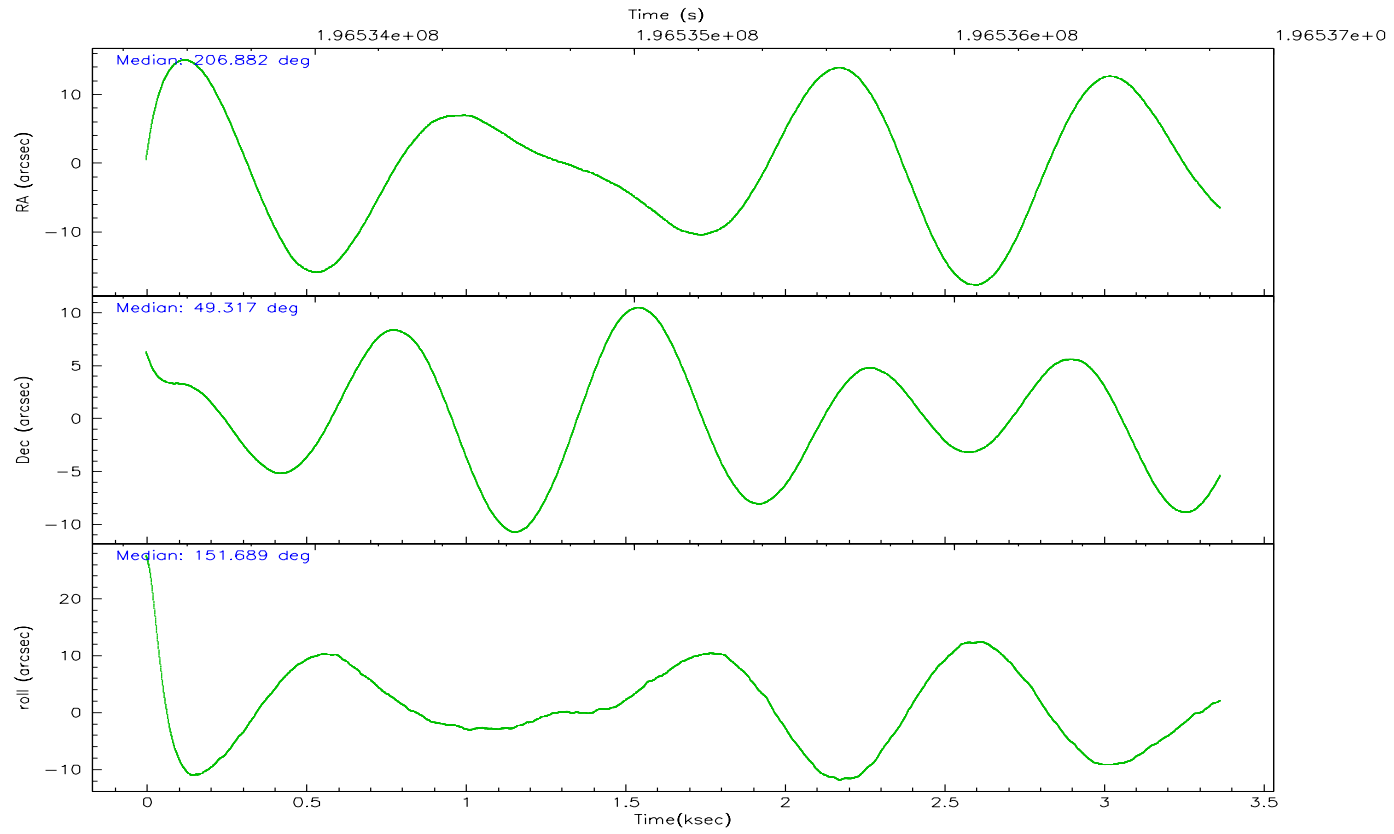
	ccd 0	ccd 1	ccd 2	ccd 3	ccd 6	ccd 7
grade 0 events	940	883	922	1038	852	589
	5%	5%	5%	5%	4%	2%
grade 1 events	8	6	12	15	8	12
	0%	0%	0%	0%	0%	0%
grade 2 events	479	474	420	412	435	2336
	2%	2%	2%	2%	2%	8%
grade 3 events	206	232	191	226	206	489
	1%	1%	1%	1%	1%	1%
grade 4 events	235	241	195	220	212	473
	1%	1%	1%	1%	1%	1%
grade 5 events	808	791	772	887	891	1756
	4%	4%	4%	4%	4%	6%
grade 6 events	432	461	384	389	514	5960
	2%	2%	2%	2%	2%	22%
grade 7 events	14017	13469	15144	15807	15537	14362
	81%	81%	83%	83%	83%	55%

2.2 Compared Parameters

Parameter	Planned	Actual	Parameter	Planned	Actual
Instrument	ACIS	ACIS	Obspar format version number	6	6
Detector	ACIS-012367	ACIS-012367	Obspar file type	PREDICTED	ACTUAL
Grating	NONE	NONE	Obspar update status	NONE	UPDATED
Data mode	FAINT	FAINT	On-chip summing requested	N	N
Observation mode	POINTING	POINTING	Subarray requested	NONE	NONE
Pointing RA	206.923366	206.8815850063118	Alternating exposures requested	N	N
Pointing Dec	49.317859	49.31685599674238	Primary exposure time	0.000000	3.2
Pointing Roll	151.452424	151.6929148698433			
SIM focus pos (mm)	-0.782348	-0.7809083437167272			
SIM defocus (mm)	0	0.001439871863259334			
SIM translation stage pos (mm)	-233.592463	-233.5874344608287			
SIM translation stage offset (mm)	0	-0.005018542100998502			
Observation start time	196533836.184000	196532771.51411			
Observation start date	2004-03-24T16:42:52	2004-03-24T16:26:11			
Observation end time	196536836.184000	196537892.41434			
Observation end date	2004-03-24T17:32:52	2004-03-24T17:51:32			
Read mode	TIMED	TIMED			

2.3 Aspect



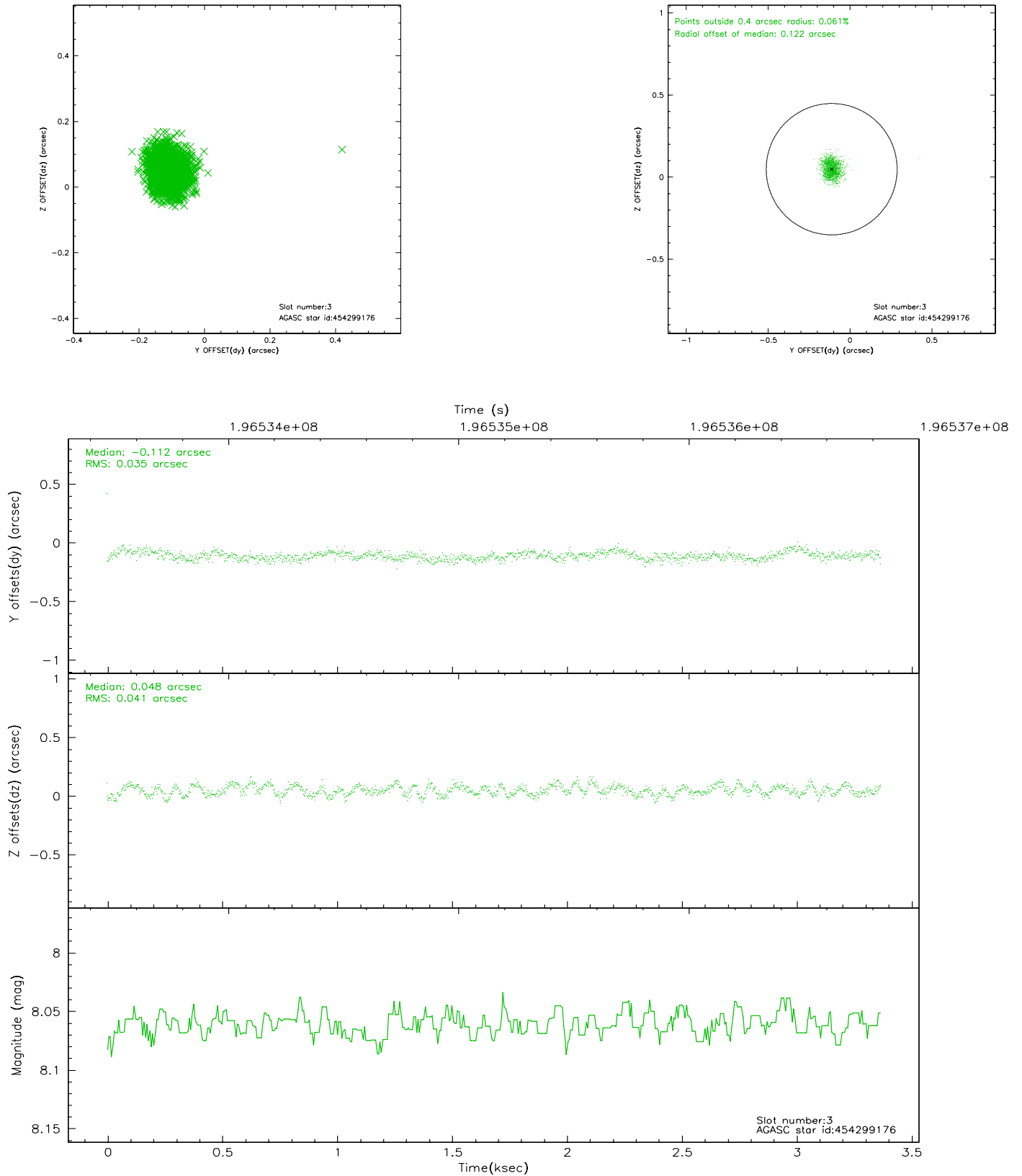


Slot Statistics

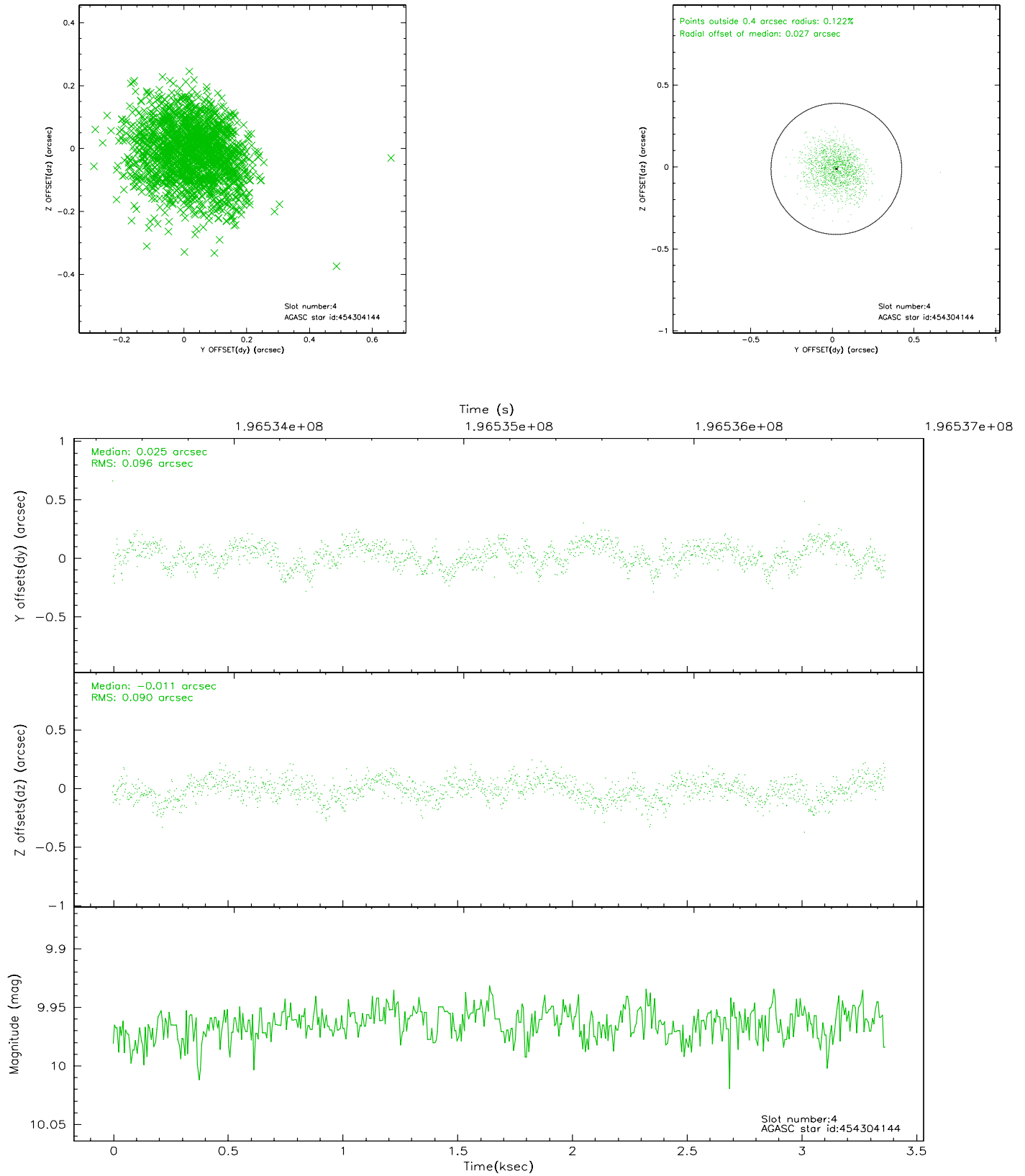
slot	status	id	mag	n_pts	med_dy	med_dz	dr1	dr2	ra	dec	mean_y	mean_z
0	FID	ACIS-I-1	7.24	822	-0.030	0.071	0.006	0.011	0.000000	0.000000	933.07	-832.98
1	FID	ACIS-I-5	7.23	822	-0.107	0.014	0.005	0.009	0.000000	0.000000	-1814.07	1063.50
2	FID	ACIS-I-6	7.25	822	0.045	-0.015	0.006	0.011	0.000000	0.000000	396.64	1710.11
3	GUIDE	454299176	8.06	1644	-0.112	0.048	0.057	0.089	205.980064	49.134870	1643.93	1628.57
4	GUIDE	454304144	9.96	1643	0.025	-0.011	0.140	0.225	206.063182	48.933717	1133.22	2177.94
5	GUIDE	454434224	8.18	1644	0.092	-0.016	0.055	0.093	207.312110	49.402692	-651.36	-704.10
6	GUIDE	454435816	9.85	1644	0.059	-0.105	0.108	0.175	207.191689	48.578705	-1832.51	2030.55
7	GUIDE	454433840	10.30	1641	-0.063	0.080	0.160	0.269	208.286786	49.596141	-2302.15	-2424.36

2.4 Star Slots

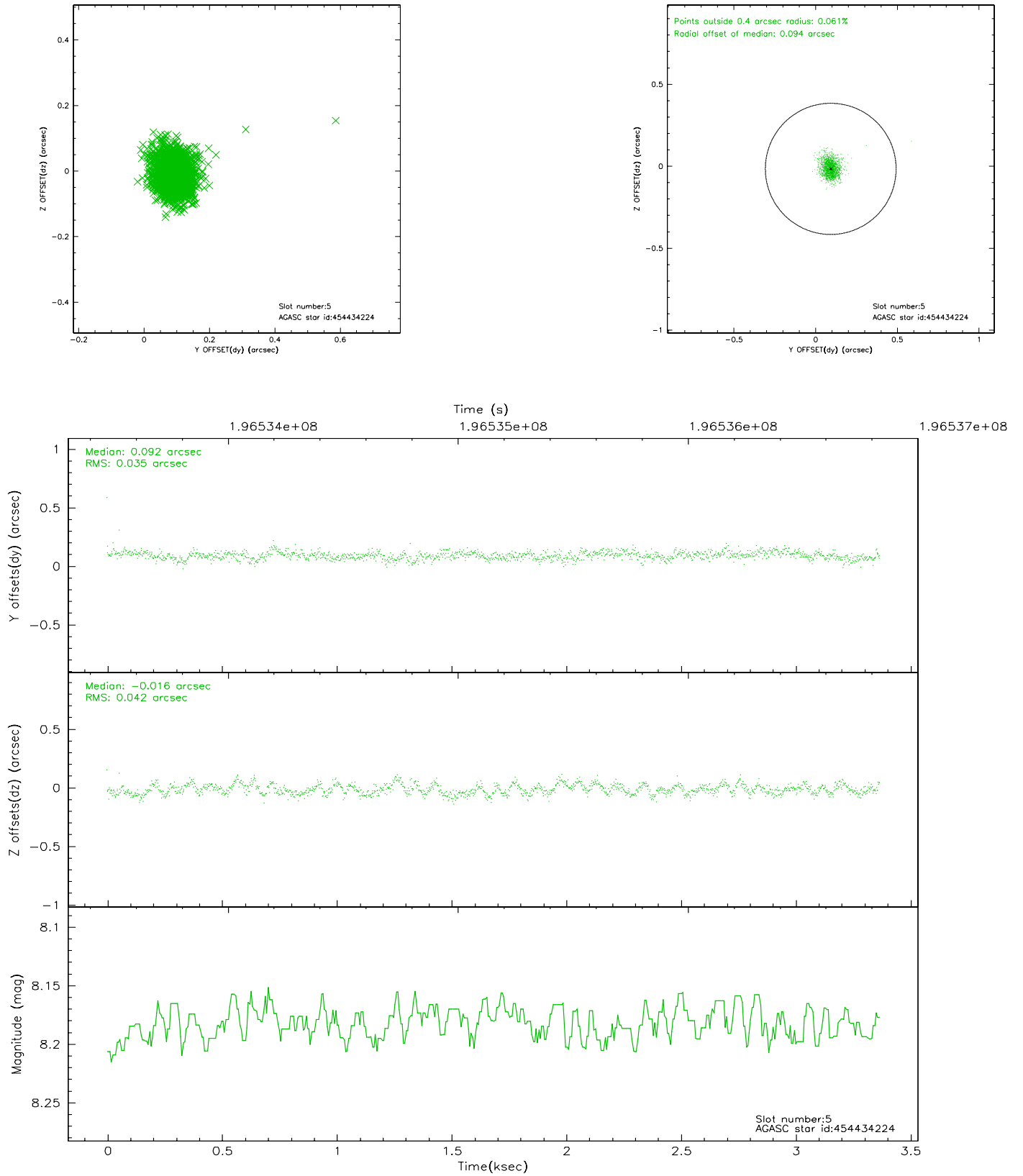
2.4.1 Slot 3



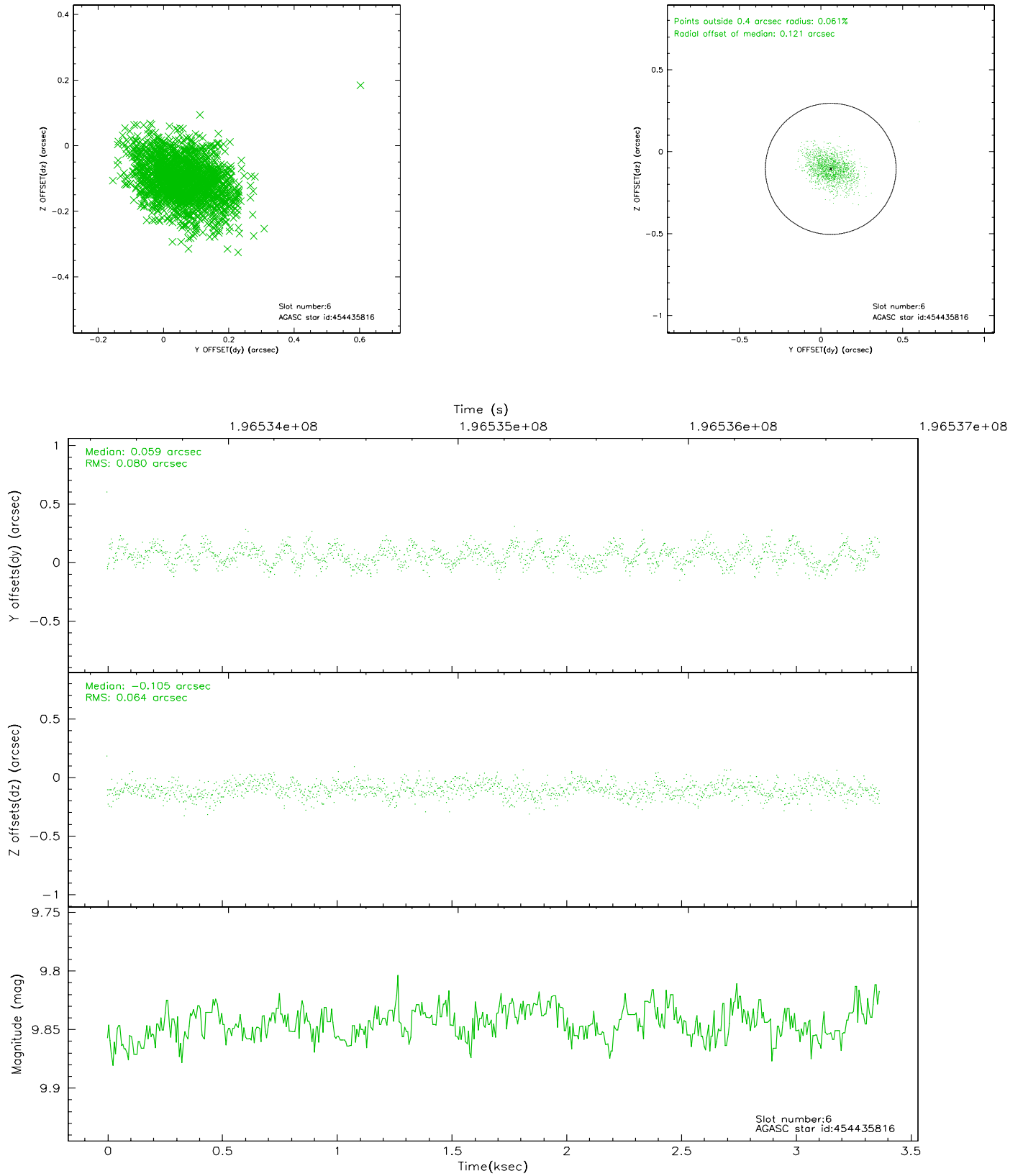
2.4.2 Slot 4



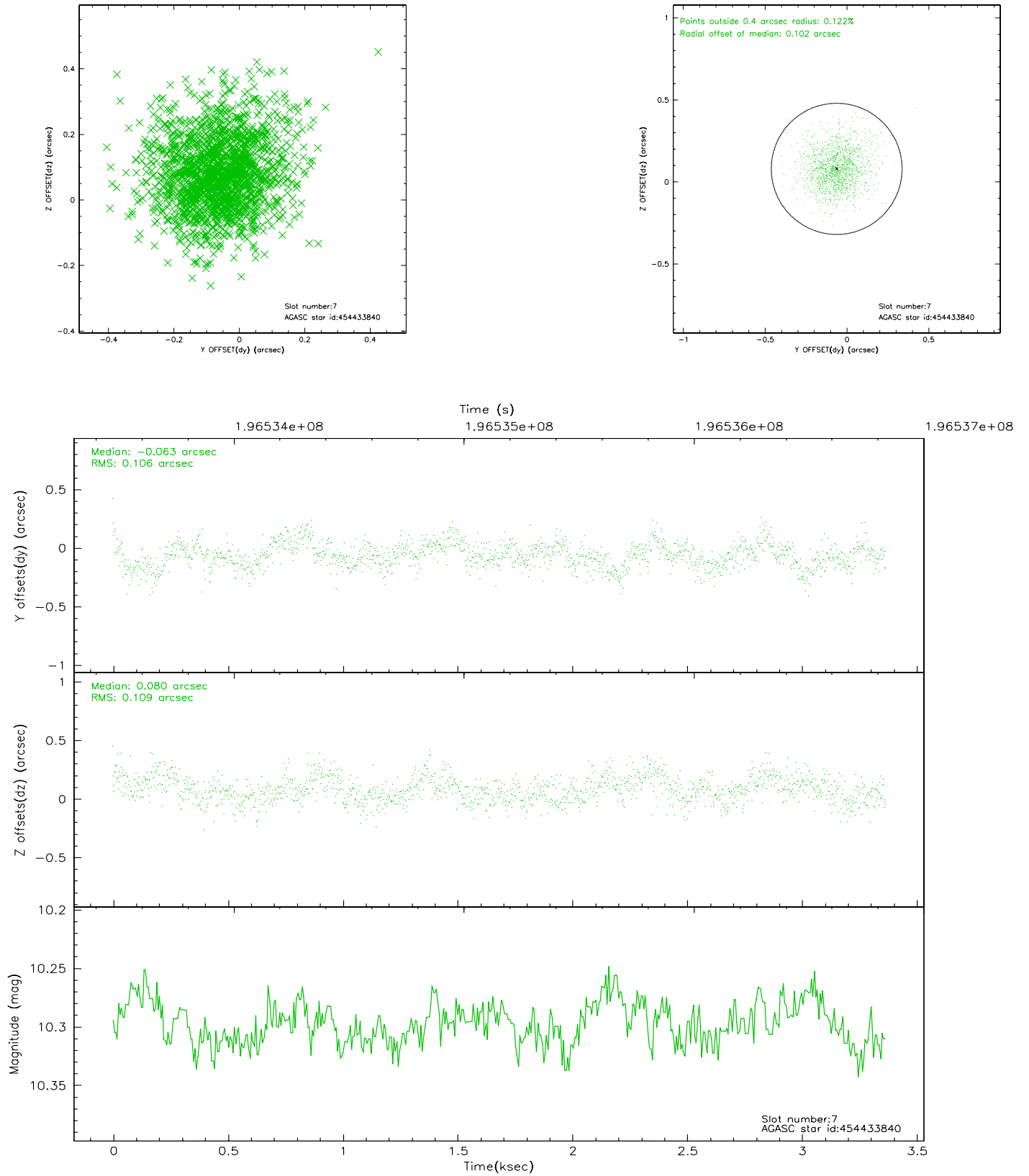
2.4.3 Slot 5



2.4.4 Slot 6

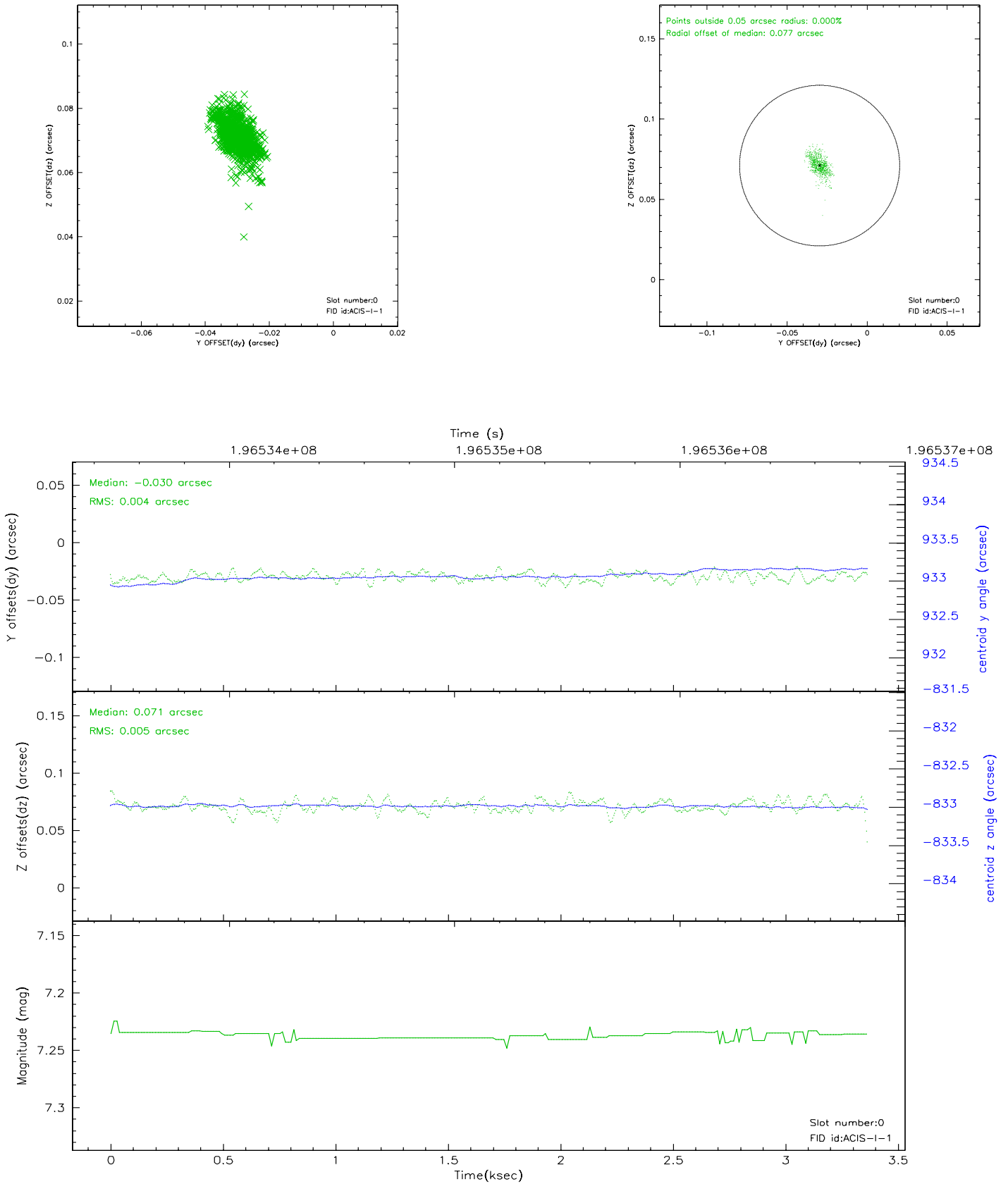


2.4.5 Slot 7

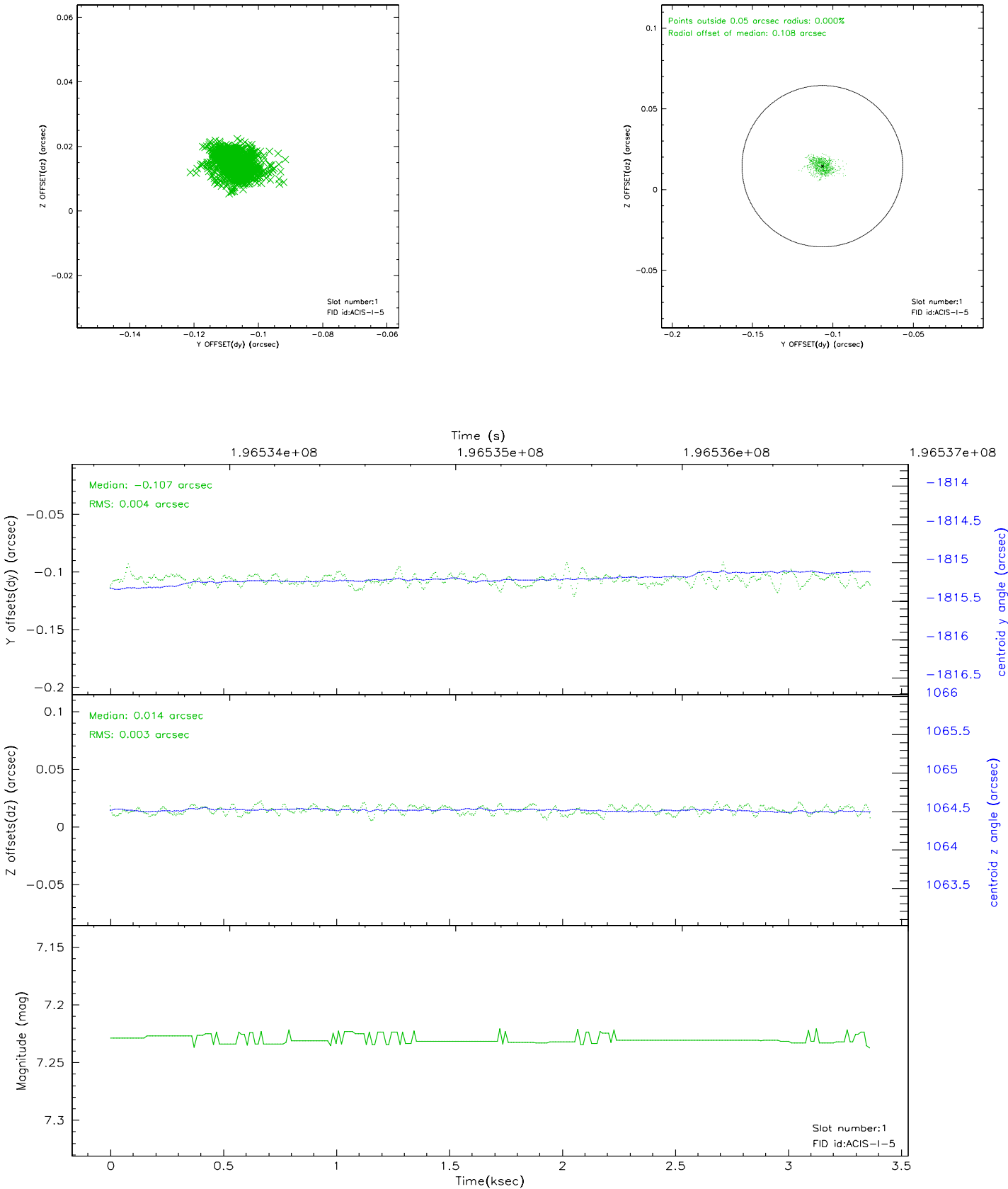


2.5 FID Slots

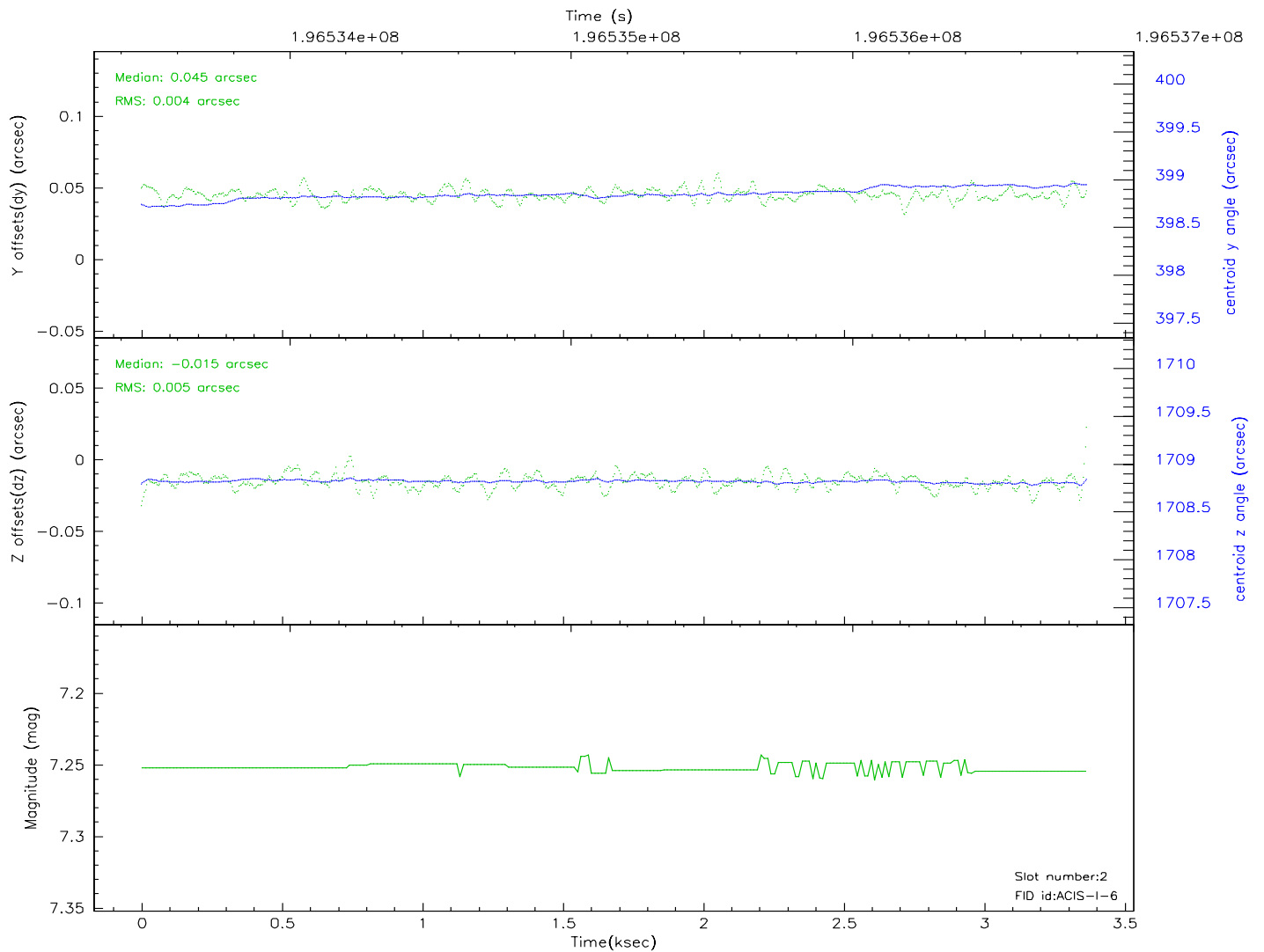
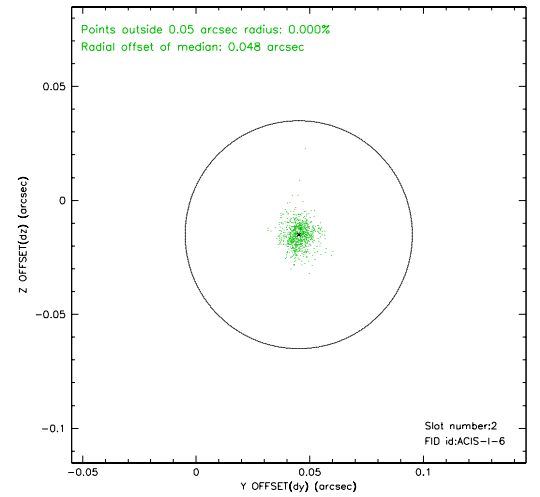
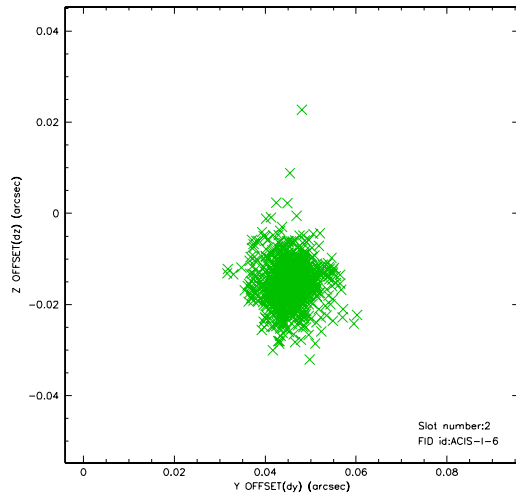
2.5.1 Slot 0



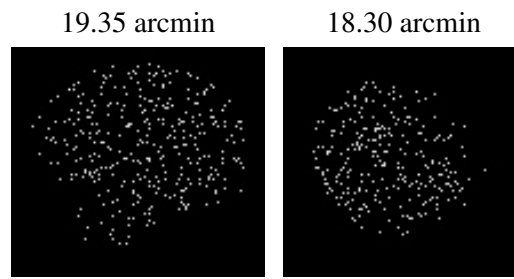
2.5.2 Slot 1



2.5.3 Slot 2



3 Point Sources



A Summary

A.1 Status

V&V Scientist	Beth Sundheim
V&V Date (YYYY-MM-DD)	2006.05.30
V&V Edition	1
V&V Disposition and Status	OK
V&V Charge Time	2.806

A.2 Comments