

V&V Reference Report

L2 ASCDS Version : 7.6.7.2

Observation 4510 - L2 Version 001
Chandra X-Ray Center

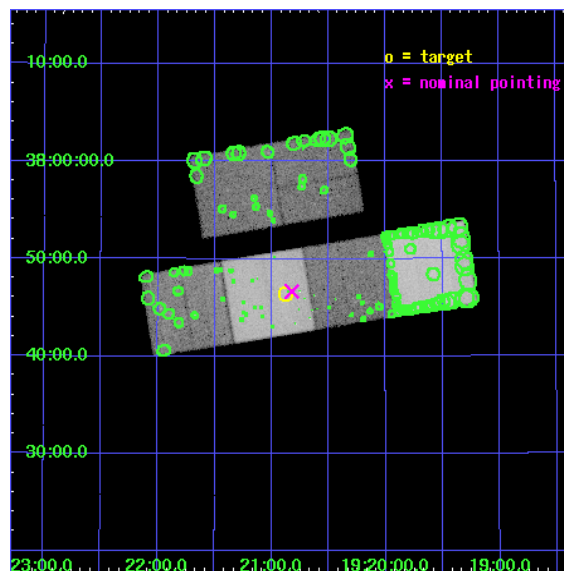
L2 Processing Date : Apr 29 2006

Contents

1	Front	2
2	OBI	3
2.1	OBI	3
2.1.1	Images	3
2.1.2	Bias	3
2.1.3	Parameters	4
2.1.4	Events	4
2.2	Compared Parameters	5
2.3	Aspect	6
2.4	Star Slots	9
2.4.1	Slot 3	9
2.4.2	Slot 4	10
2.4.3	Slot 5	11
2.4.4	Slot 6	12
2.4.5	Slot 7	13
2.5	FID Slots	14
2.5.1	Slot 0	14
2.5.2	Slot 1	15
2.5.3	Slot 2	16
3	Point Sources	17
A	Summary	18
A.1	Status	18
A.2	Comments	18

1 Front

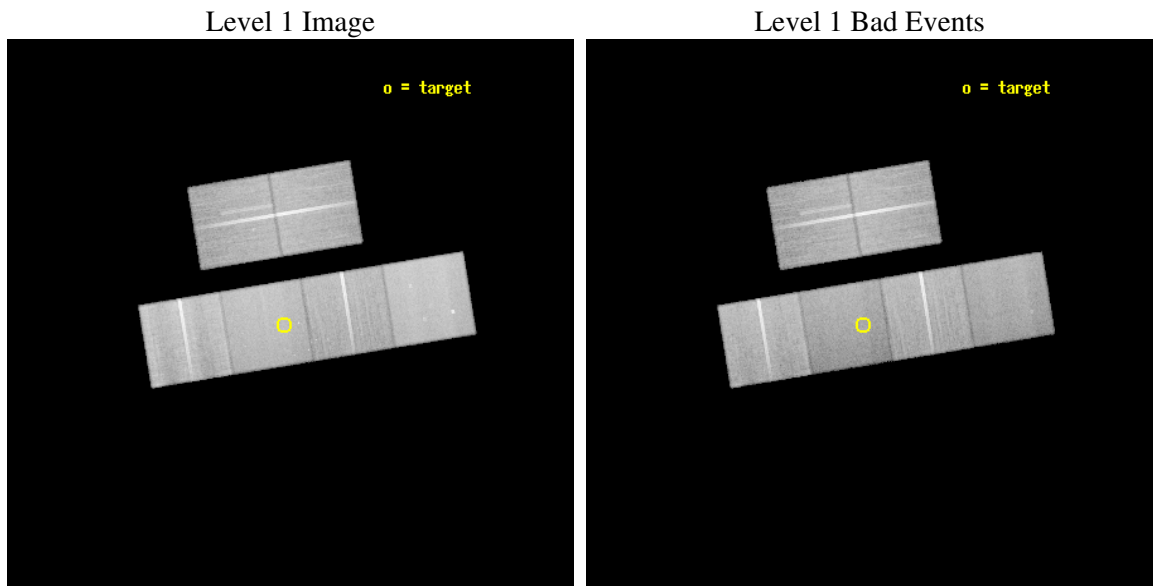
seq_num	200279
obs_id	4510
title	Looking for binaries in the oldest open clusters
observer	Dr Maureen van den Berg
object	NGC6791
dtcycle	0
cycle	P
ra_targ	290.220833
dec_targ	37.774167
ra_nom	290.20578317264
dec_nom	37.777852703589
roll_nom	170.6507166435
revision	2
ontime	48783.999818265
livetime	48166.267438368
ontime2	48780.758957535
ontime3	48767.79489705
ontime5	48783.999818265
ontime6	48780.758847982
ontime7	48783.999818265
ontime8	48780.75891763
l2events	453493



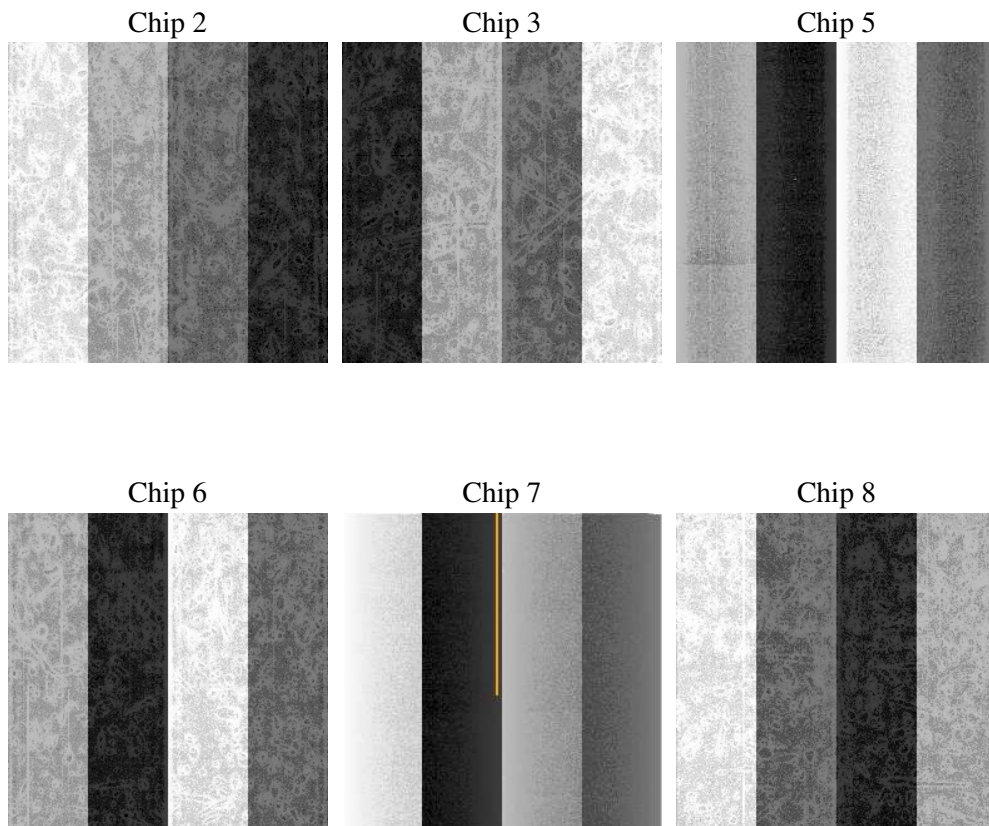
2 OBI

2.1 OBI

2.1.1 Images



2.1.2 Bias



2.1.3 Parameters

obi_num	1
ascdsver	7.6.7.2
caldsver	3.2.1
date	2006-04-29T08:23:33
revision	2

sched_exp_time	48826.087000
ontime	48790.108412802
ontime2	48786.867532164
ontime3	48773.903471678
ontime5	48790.108412802
ontime6	48786.867422611
ontime7	48790.108412802
ontime8	48786.867492259
l1events	2062179

2.1.4 Events

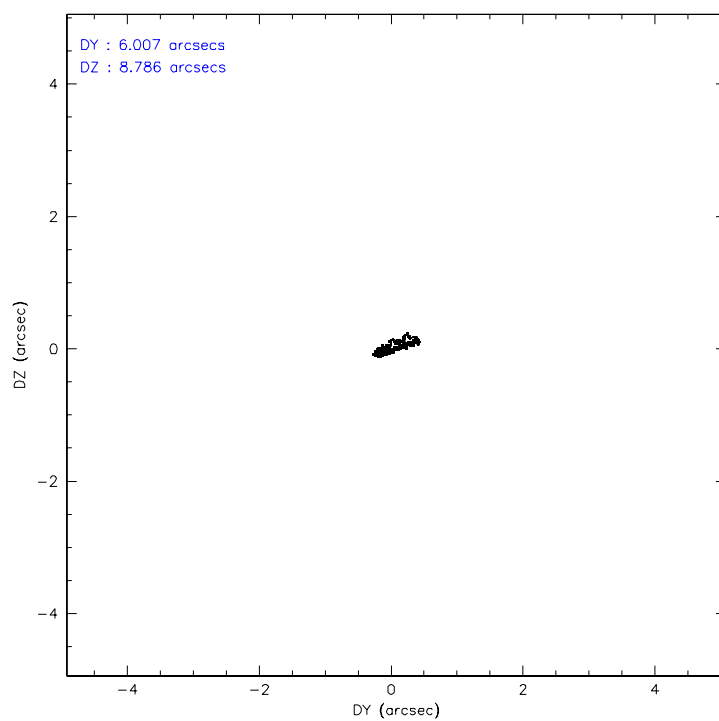
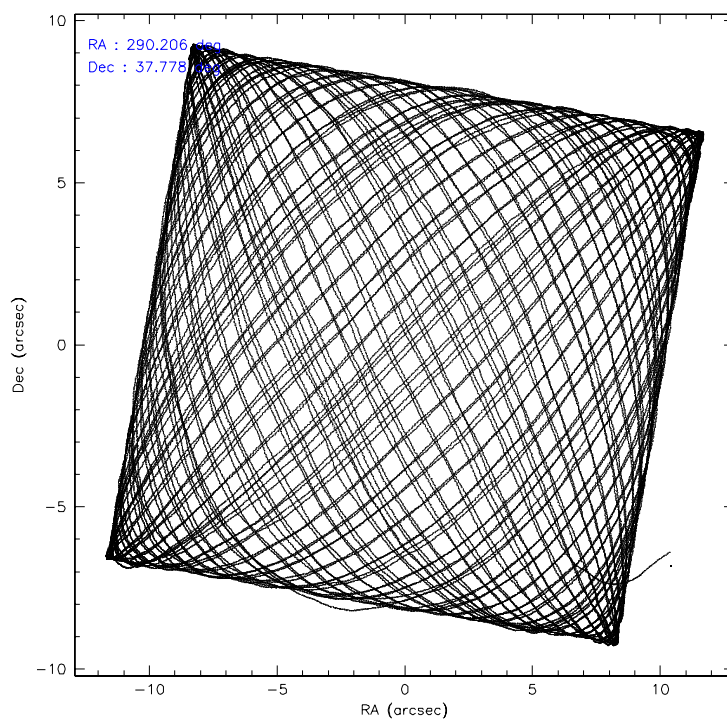
	ccd 2	ccd 3	ccd 5	ccd 6	ccd 7	ccd 8
level 1 events	321848	296216	405675	313380	342304	382756
rejected events	289458	265445	213031	278645	193265	291730
rejected %	89%	89%	52%	88%	56%	76%

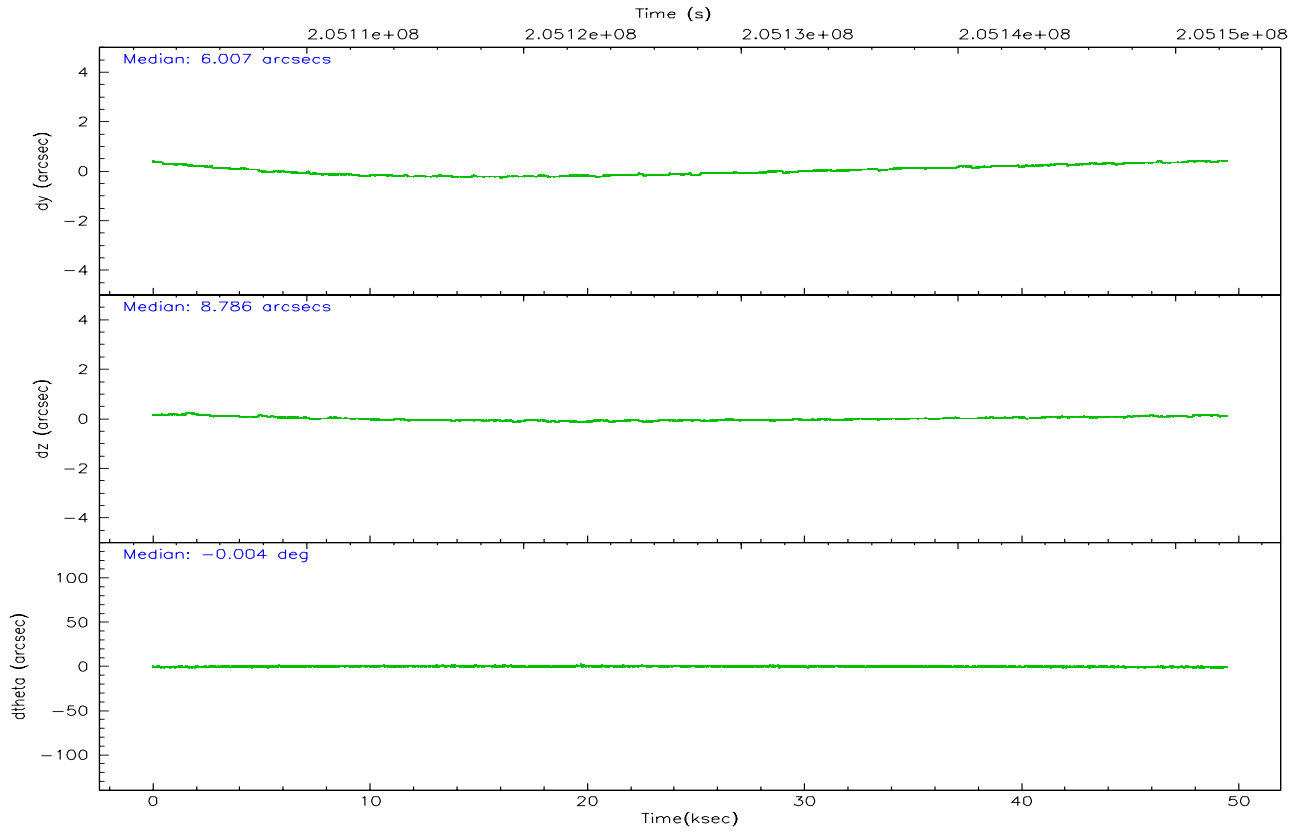
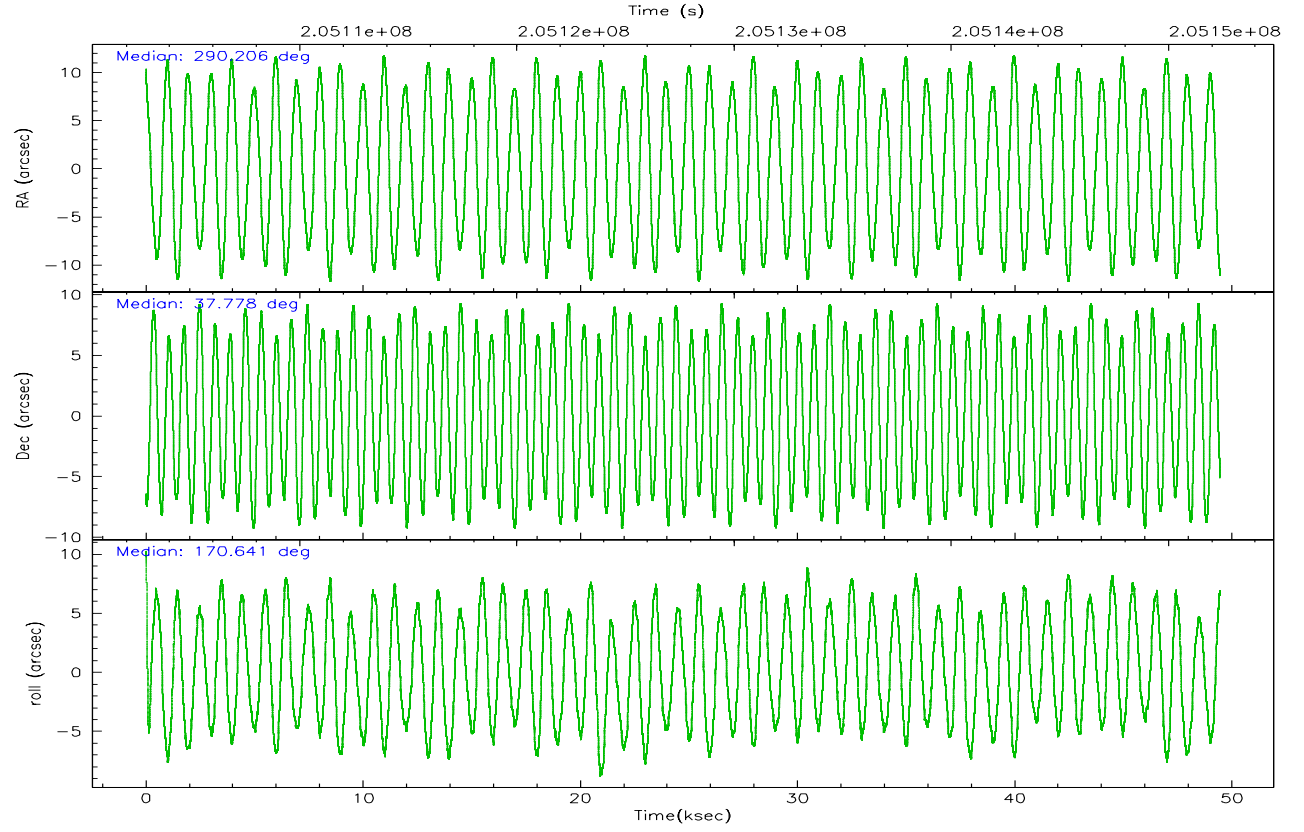
	ccd 2	ccd 3	ccd 5	ccd 6	ccd 7	ccd 8
grade 0 events	12728	12191	9323	13823	9309	29814
	3%	4%	2%	4%	2%	7%
grade 1 events	188	172	342	167	166	286
	0%	0%	0%	0%	0%	0%
grade 2 events	7179	6275	60672	7126	36112	19552
	2%	2%	14%	2%	10%	5%
grade 3 events	3437	3335	5275	3610	8853	9516
	1%	1%	1%	1%	2%	2%
grade 4 events	3387	3266	5055	3411	8401	8964
	1%	1%	1%	1%	2%	2%
grade 5 events	10376	11434	21881	12119	25601	16953
	3%	3%	5%	3%	7%	4%
grade 6 events	5664	5714	112360	6769	86392	23197
	1%	1%	27%	2%	25%	6%
grade 7 events	278889	253829	190767	266355	167470	274474
	86%	85%	47%	84%	48%	71%

2.2 Compared Parameters

Parameter	Planned	Actual	Parameter	Planned	Actual
Instrument	ACIS	ACIS	Obspar format version number	6	6
Detector	ACIS-235678	ACIS-235678	Obspar file type	PREDICTED	ACTUAL
Grating	NONE	NONE	Obspar update status	NONE	UPDATED
Data mode	VFAINT	VFAINT	On-chip summing requested	N	N
Observation mode	POINTING	POINTING	Subarray requested	NONE	NONE
Pointing RA	290.237844	290.2057831726351	Alternating exposures requested	N	N
Pointing Dec	37.787792	37.7778527035886	Primary exposure time	0.000000	3.2
Pointing Roll	170.474446	170.6507166435032			
SIM focus pos (mm)	-0.684267	-0.6828225247311905			
SIM defocus (mm)	0	0.001444936568705701			
SIM translation stage pos (mm)	-190.132523	-190.1400660498719			
SIM translation stage offset (mm)	0	0.00754346686406393			
Observation start time	205103550.184000	205102312.06728			
Observation start date	2004-07-01T21:11:26	2004-07-01T20:51:52			
Observation end time	205152376.184000	205152592.4195			
Observation end date	2004-07-02T10:45:12	2004-07-02T10:49:52			
Read mode	TIMED	TIMED			

2.3 Aspect



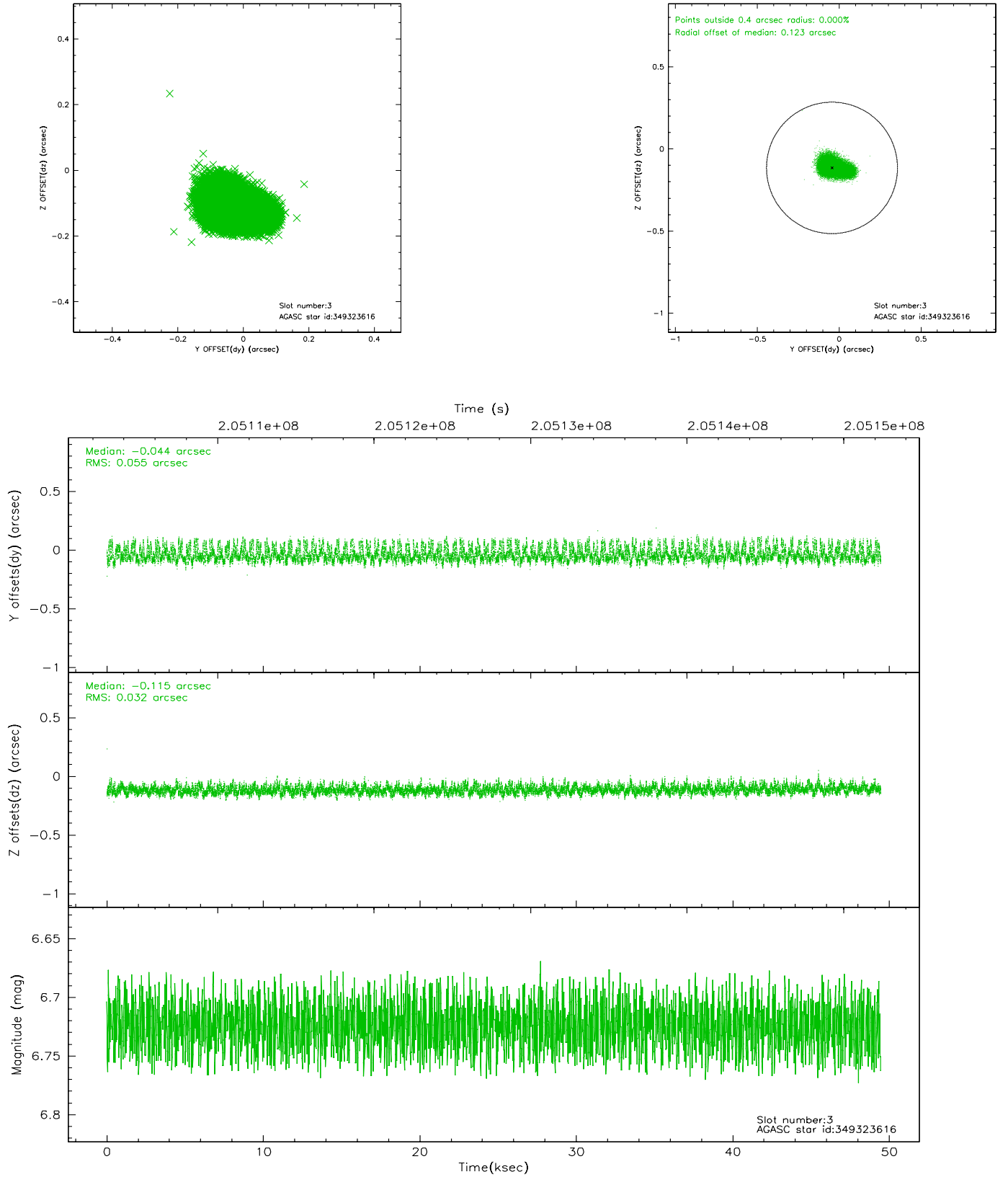


Slot Statistics

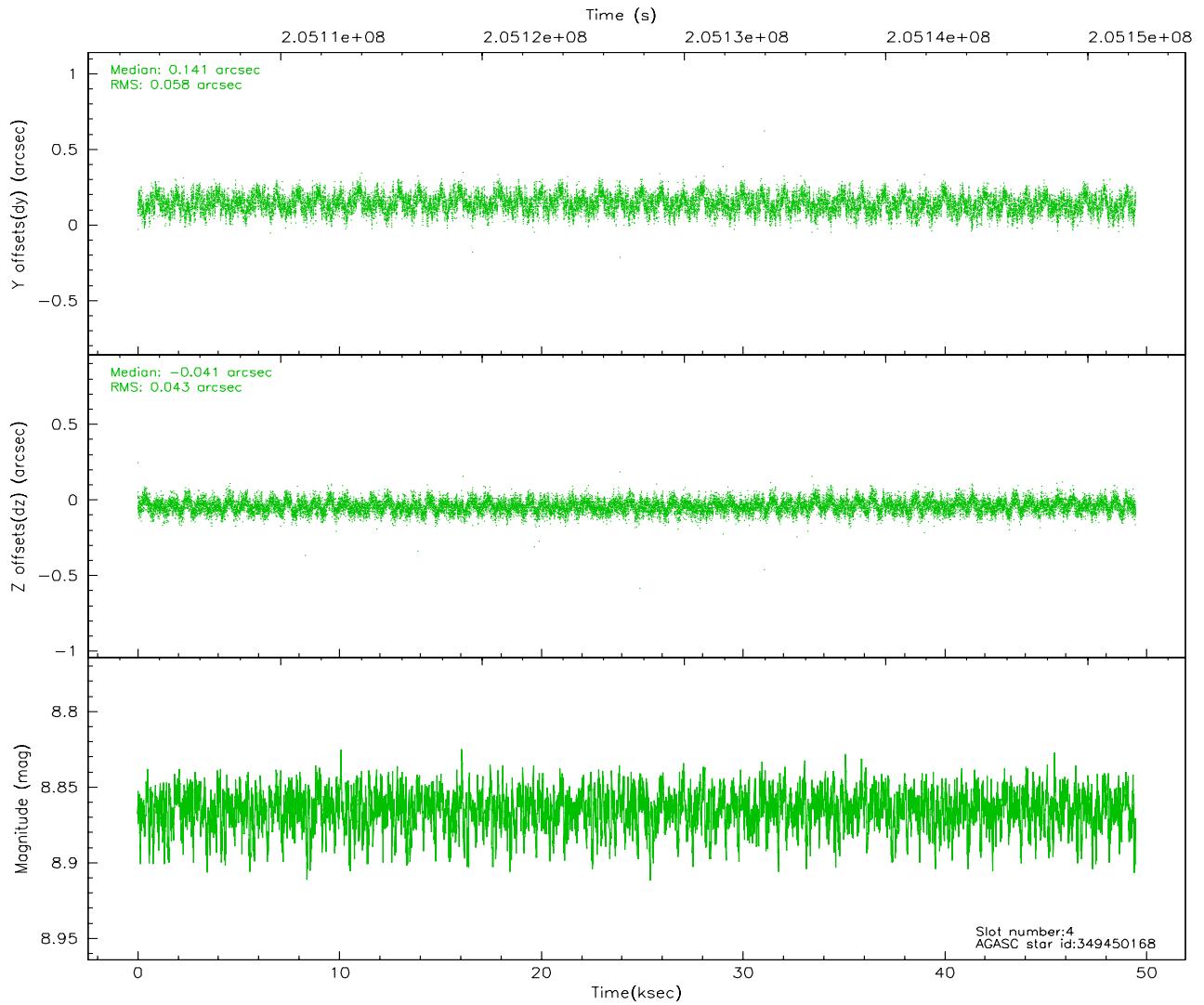
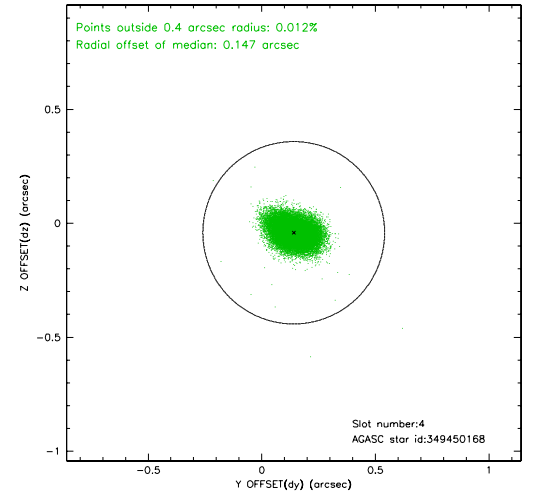
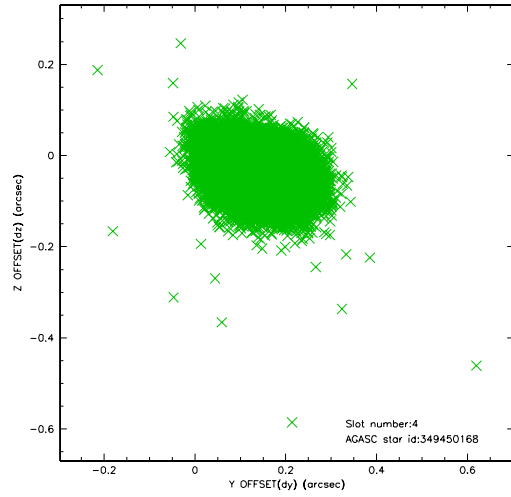
slot	status	id	mag	n_pts	med_dy	med_dz	dr1	dr2	ra	dec	mean_y	mean_z
0	FID	ACIS-S-1	7.18	12063	0.036	0.002	0.006	0.010	0.000000	0.000000	937.28	-1725.65
1	FID	ACIS-S-2	7.10	12064	-0.036	-0.022	0.007	0.011	0.000000	0.000000	-758.71	-1730.18
2	FID	ACIS-S-5	7.23	12063	-0.023	0.027	0.006	0.010	0.000000	0.000000	-1811.89	172.00
3	GUIDE	349323616	6.72	24124	-0.044	-0.115	0.066	0.117	289.754804	37.445352	1158.13	1440.95
4	GUIDE	349450168	8.86	24019	0.141	-0.041	0.077	0.125	290.661112	37.337400	-1462.49	1395.84
5	GUIDE	409079120	7.59	24127	-0.096	-0.012	0.044	0.071	289.707491	37.585682	1372.37	964.19
6	GUIDE	409085408	8.77	24121	0.096	0.044	0.088	0.140	289.841686	38.530382	1544.00	-2453.70
7	GUIDE	410786512	8.04	24121	-0.105	0.123	0.049	0.081	290.134357	38.425391	668.30	-2215.30

2.4 Star Slots

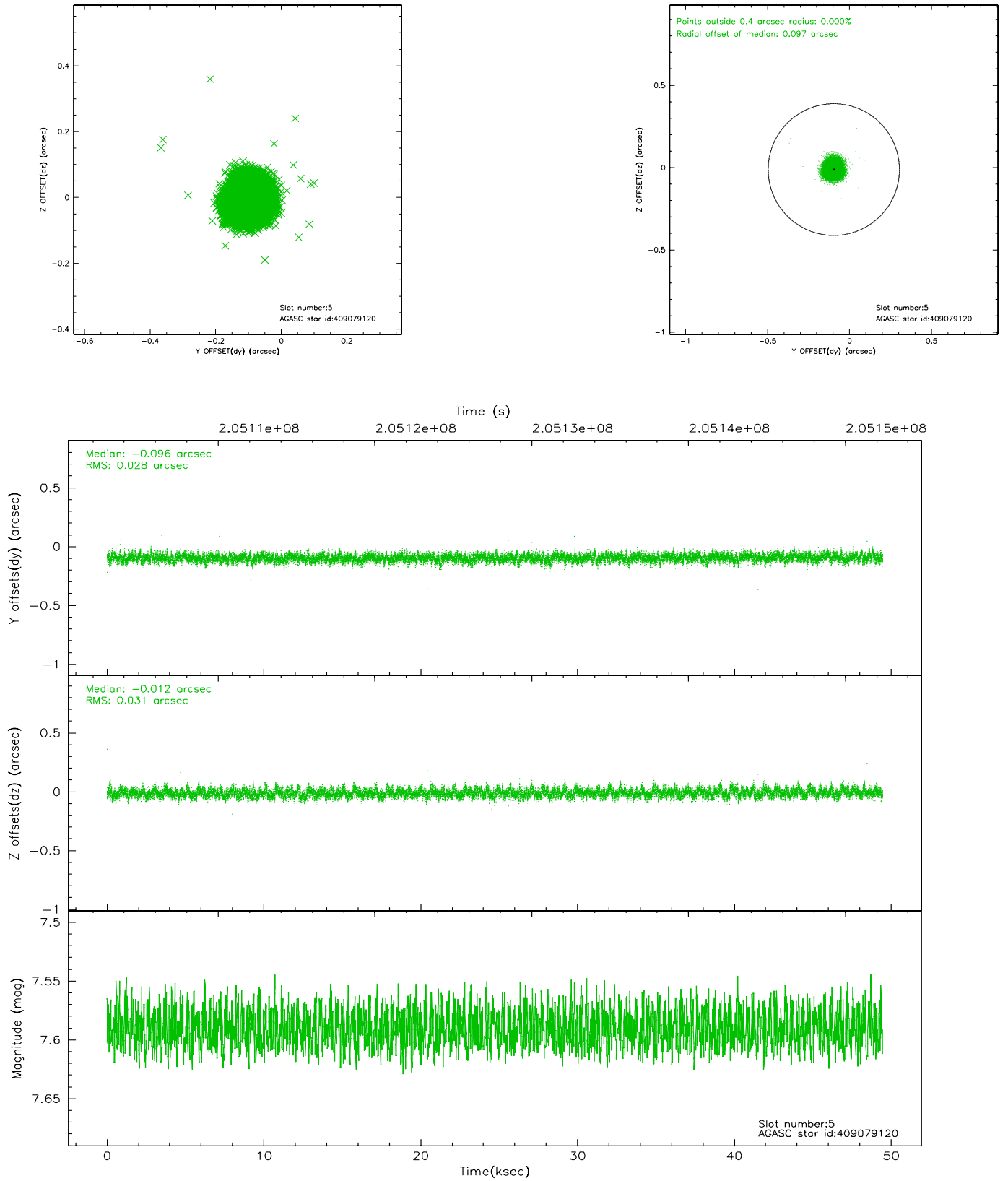
2.4.1 Slot 3



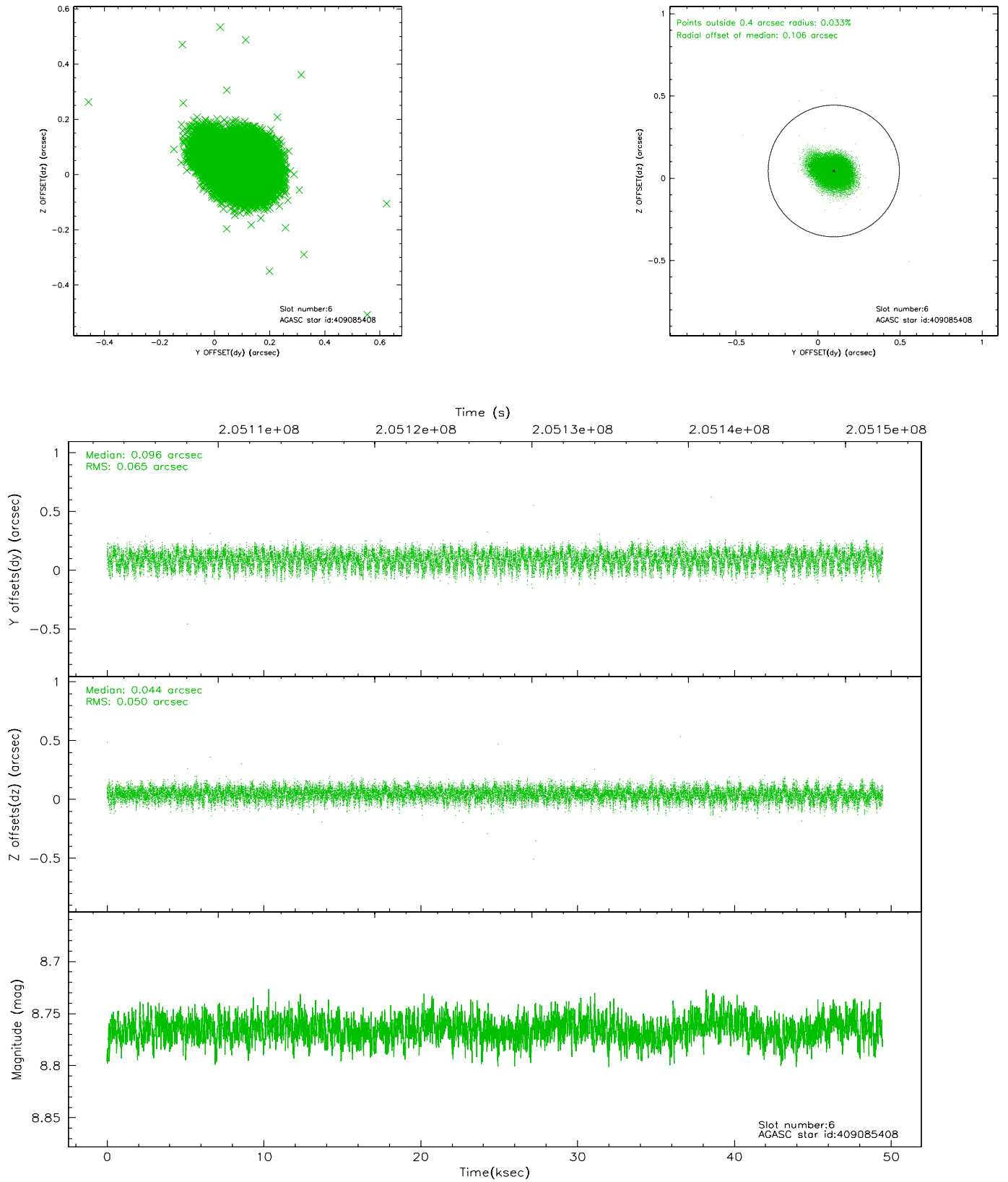
2.4.2 Slot 4



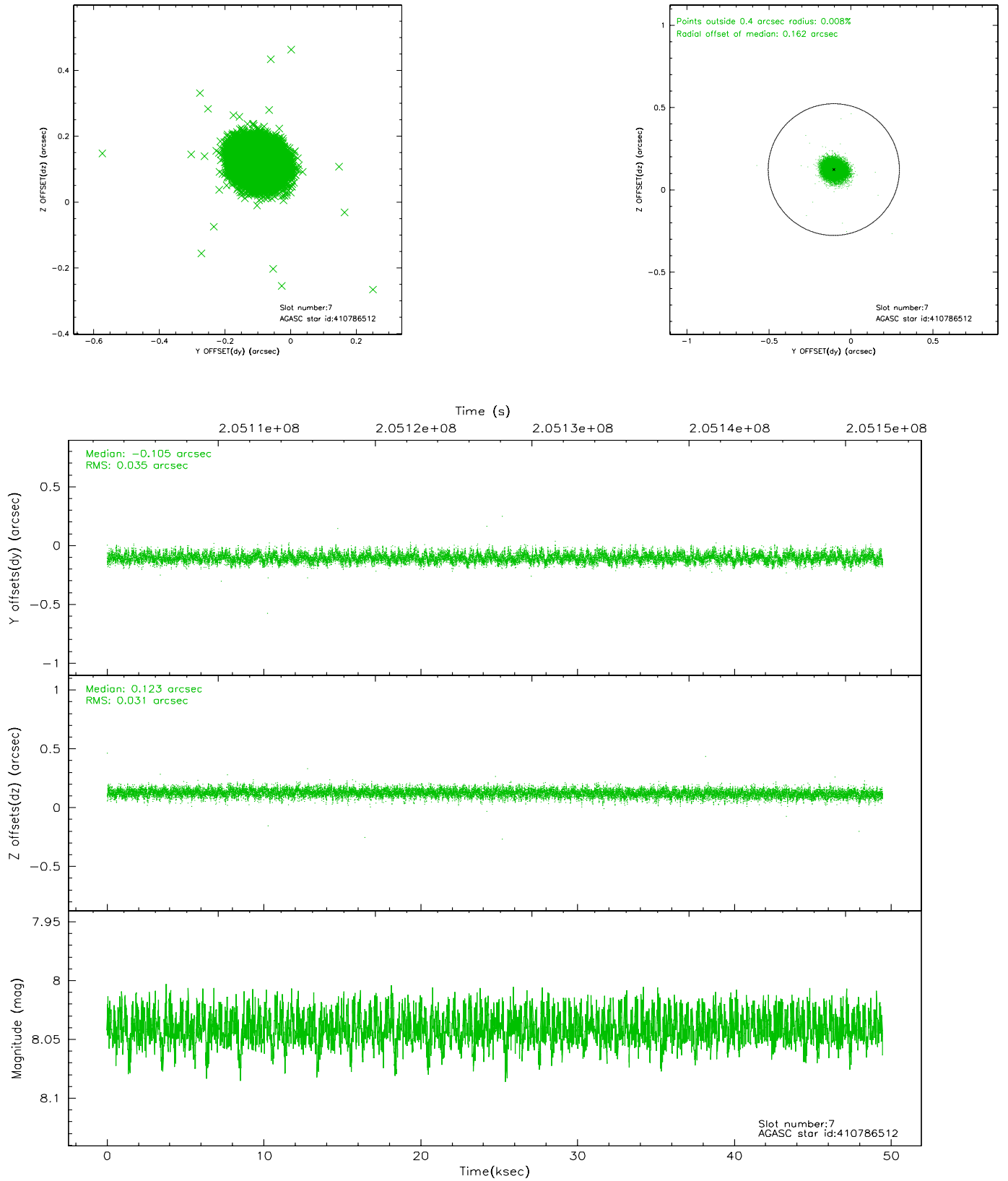
2.4.3 Slot 5



2.4.4 Slot 6

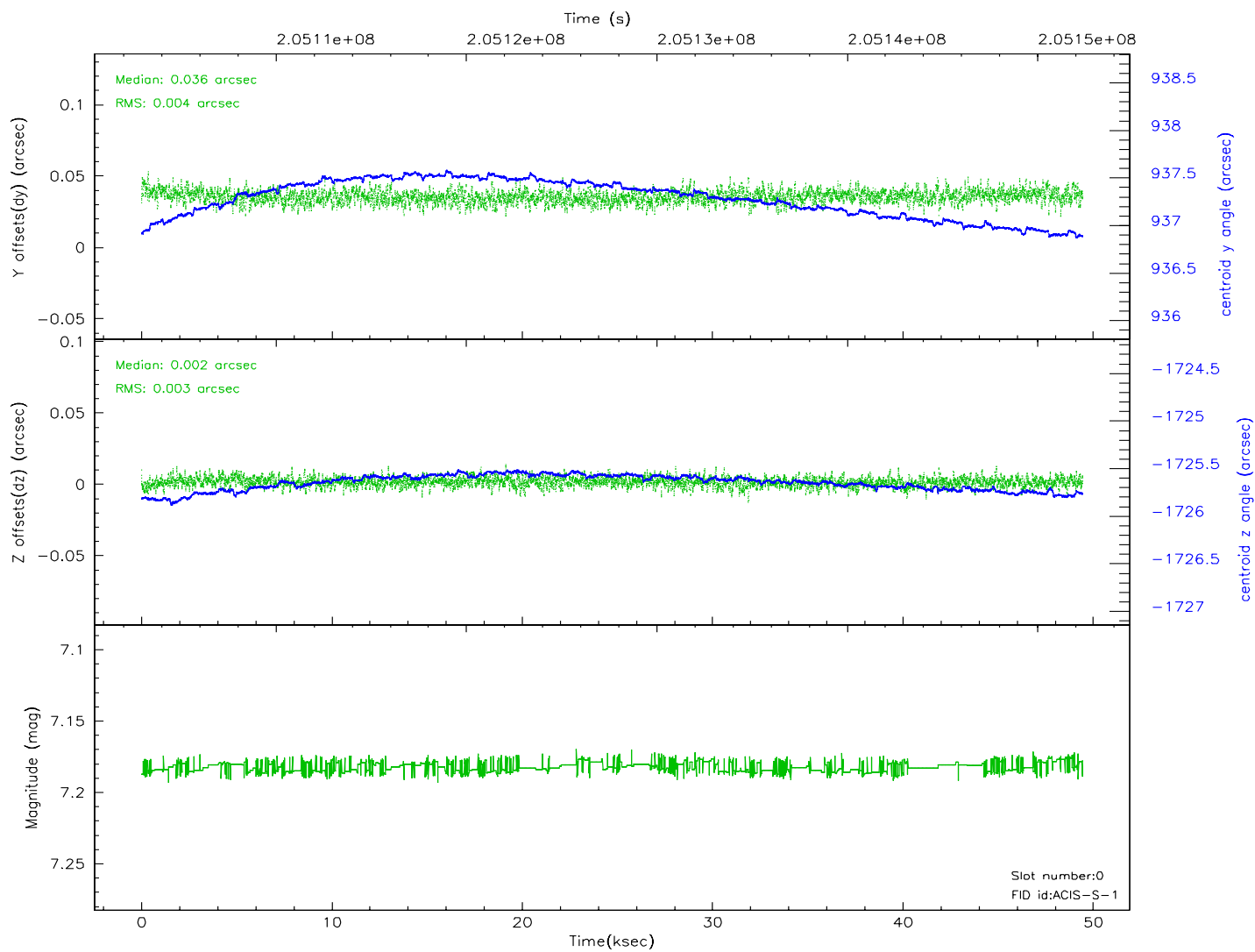
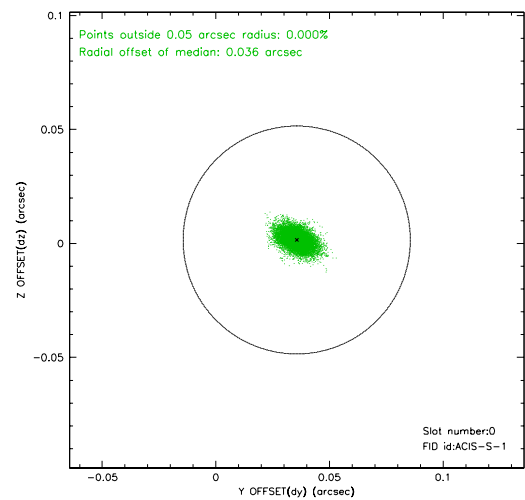
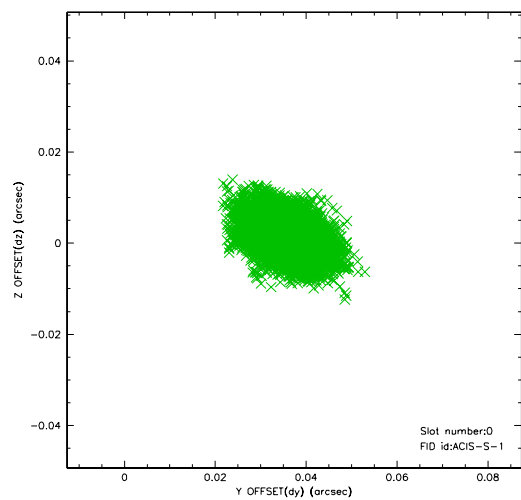


2.4.5 Slot 7

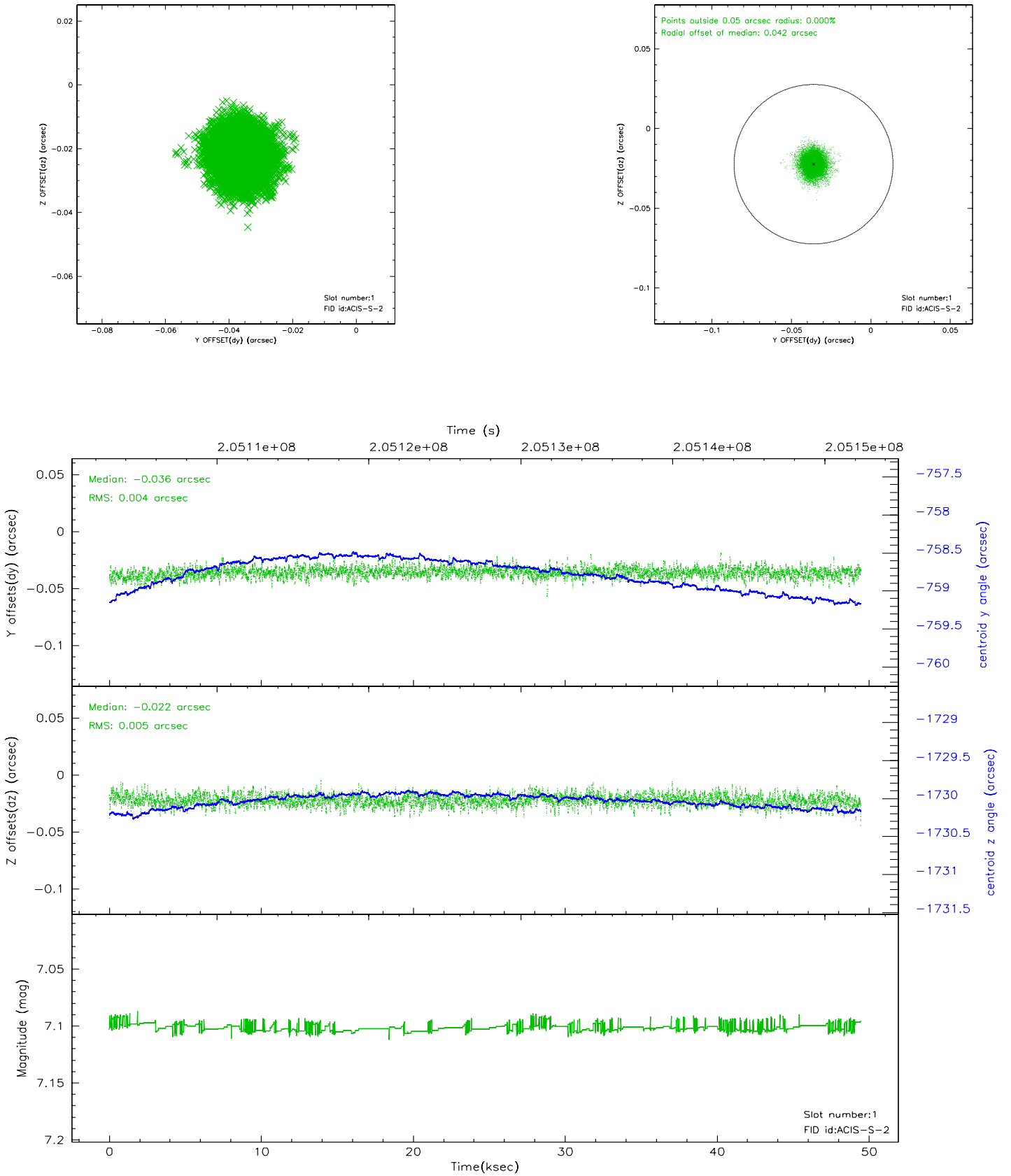


2.5 FID Slots

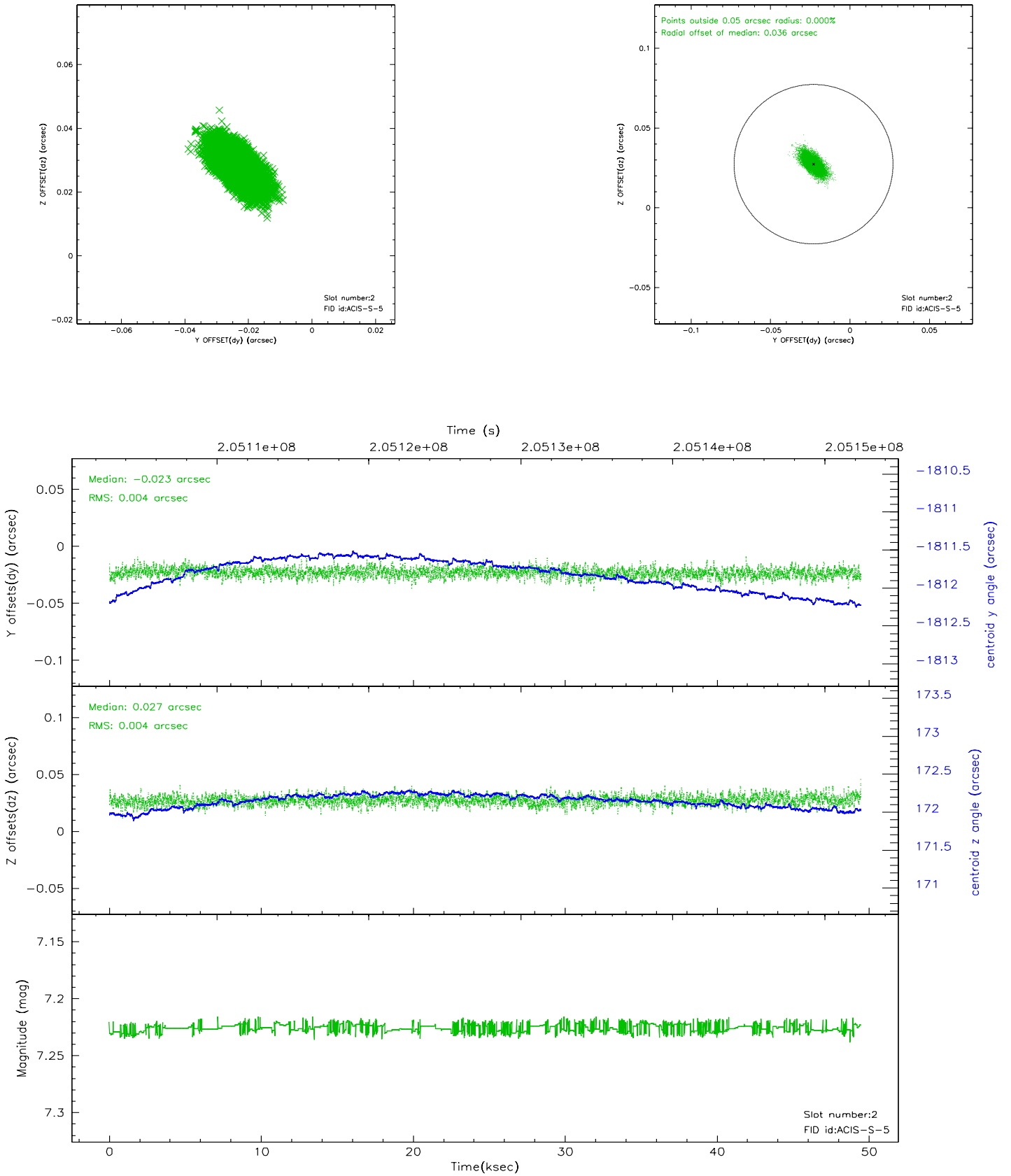
2.5.1 Slot 0



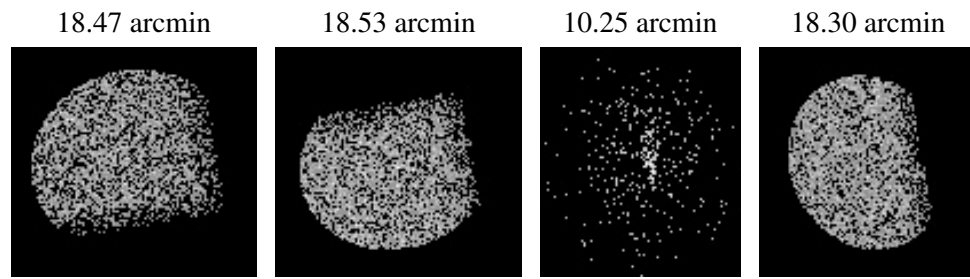
2.5.2 Slot 1



2.5.3 Slot 2



3 Point Sources



A Summary

A.1 Status

V&V Scientist	Jen Lauer
V&V Date (YYYY-MM-DD)	2006.04.30
V&V Edition	1
V&V Disposition and Status	OK
V&V Charge Time	48.783

A.2 Comments