

V&V Reference Report

L2 ASCDS Version : 7.6.7.2

Observation 4501 - L2 Version 001
Chandra X-Ray Center

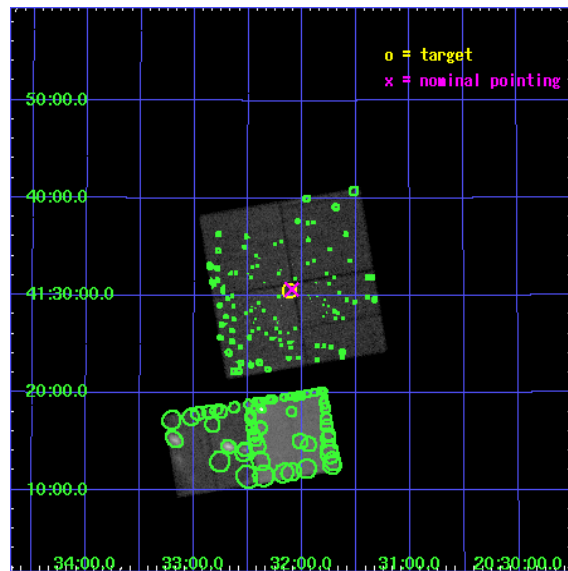
L2 Processing Date : Apr 28 2006

Contents

1	Front	2
2	OBI	3
2.1	OBI	3
2.1.1	Images	3
2.1.2	Bias	3
2.1.3	Parameters	4
2.1.4	Events	4
2.2	Compared Parameters	5
2.3	Aspect	6
2.4	Star Slots	9
2.4.1	Slot 3	9
2.4.2	Slot 4	10
2.4.3	Slot 5	11
2.4.4	Slot 6	12
2.4.5	Slot 7	13
2.5	FID Slots	14
2.5.1	Slot 0	14
2.5.2	Slot 1	15
2.5.3	Slot 2	16
3	Point Sources	17
A	Summary	18
A.1	Status	18
A.2	Comments	18

1 Front

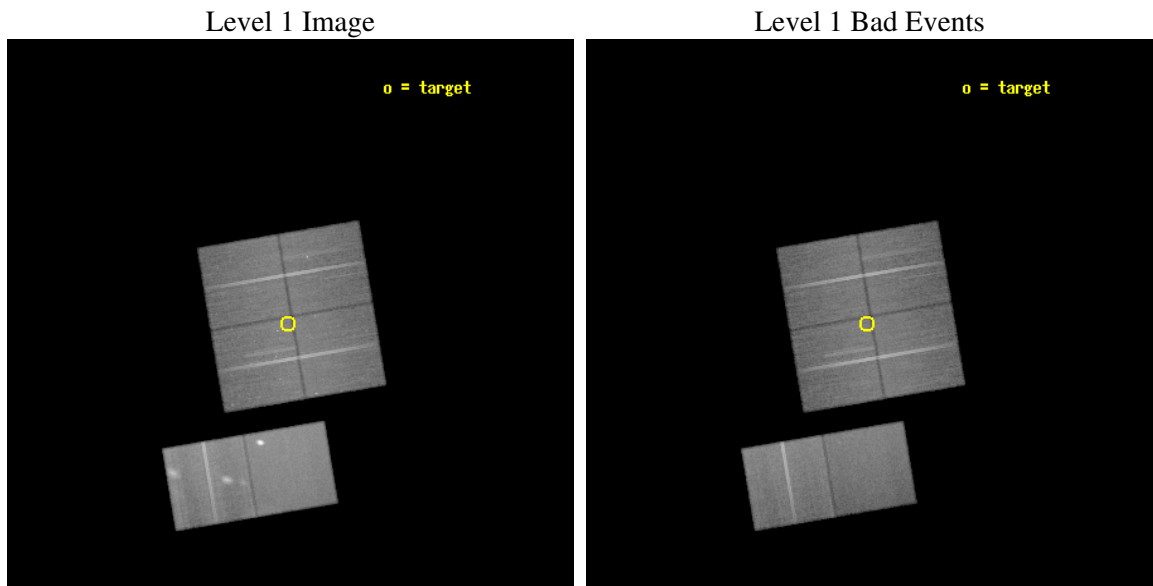
seq_num	200270
obs_id	4501
title	Cosmic Ray Acceleration and Non-thermal X-rays in Cyg OB2
observer	Dr. Yousaf Butt
object	Cygnus OB2 North West
dtcycle	0
cycle	P
ra_targ	308.029167
dec_targ	41.508333
ra_nom	308.02397549763
dec_nom	41.51082898603
roll_nom	170.39917309727
revision	3
ontime	49353.517925292
livetime	48728.573964201
ontime0	49356.758945376
ontime1	49350.276984811
ontime2	49350.276974916
ontime3	49353.517925292
ontime7	49359.99981612
ontime8	49353.517955154
l2events	462421



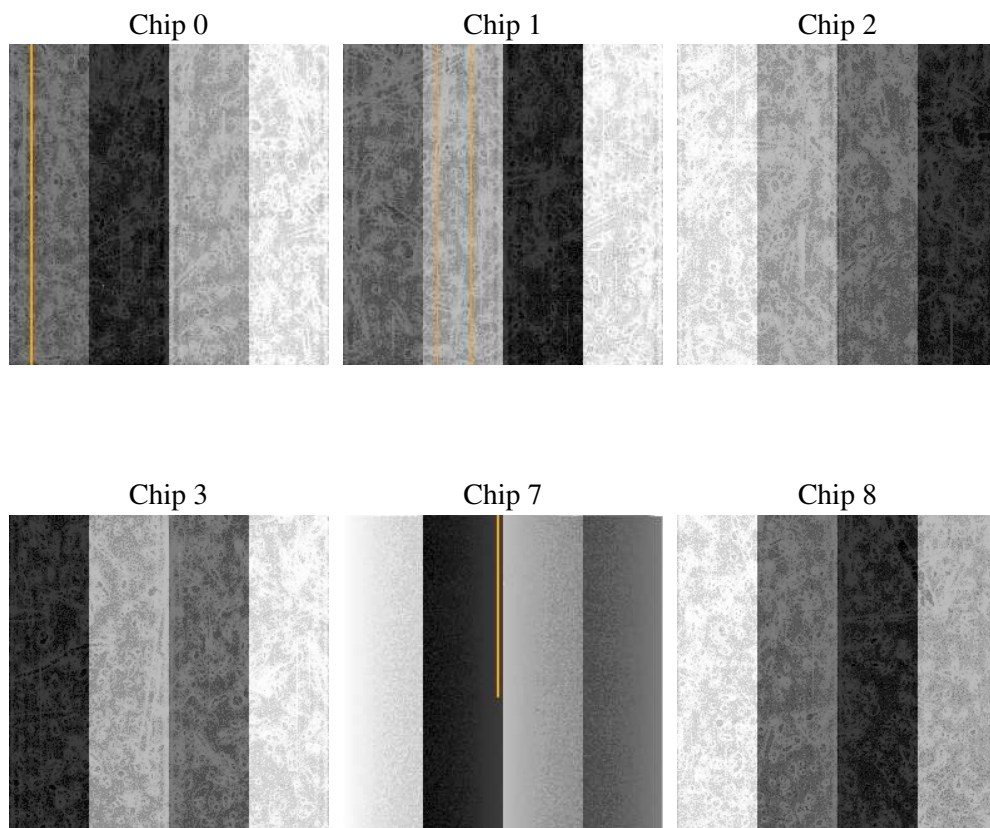
2 OBI

2.1 OBI

2.1.1 Images



2.1.2 Bias



2.1.3 Parameters

obi_num	0
ascdsver	7.6.7.2
caldsver	3.2.1
date	2006-04-28T16:30:53
revision	3

sched_exp_time	49232.000000
ontime	49357.280101836
ontime0	49360.521141827
ontime1	49354.039181262
ontime2	49354.03915146
ontime3	49357.280101836
ontime7	49363.762012571
ontime8	49357.280131698
l1events	2427230

2.1.4 Events

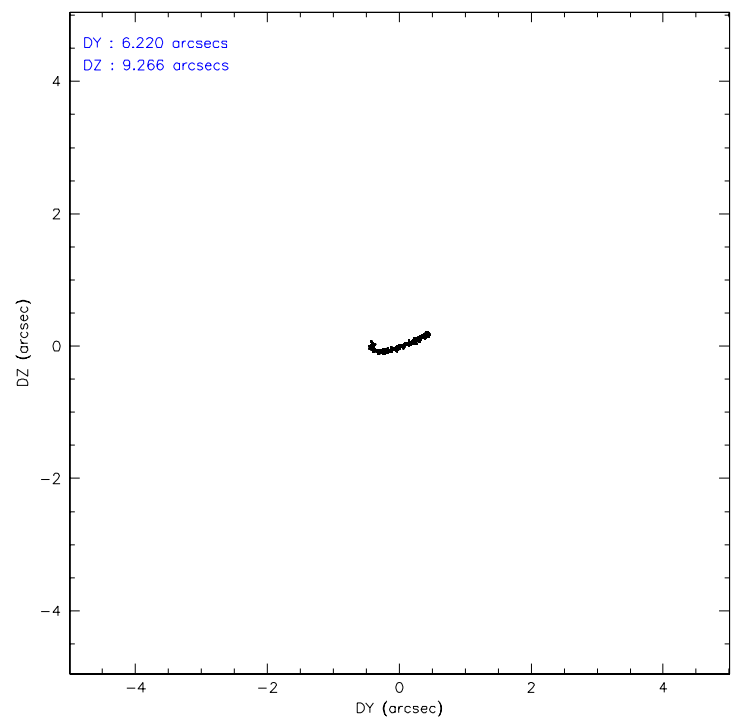
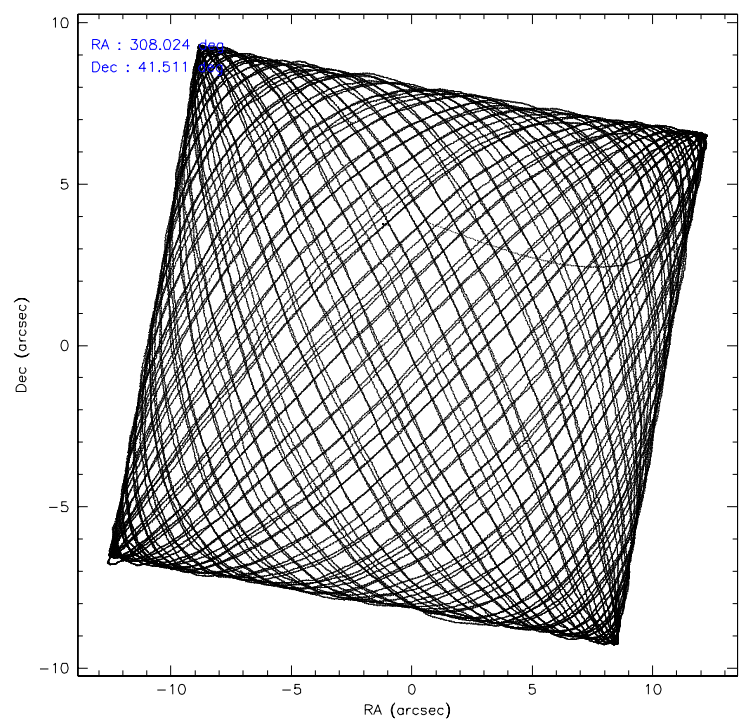
	ccd 0	ccd 1	ccd 2	ccd 3	ccd 7	ccd 8
level 1 events	330800	339141	358792	367251	518055	513191
rejected events	284063	289454	311289	311947	300515	375292
rejected %	85%	85%	86%	84%	58%	73%

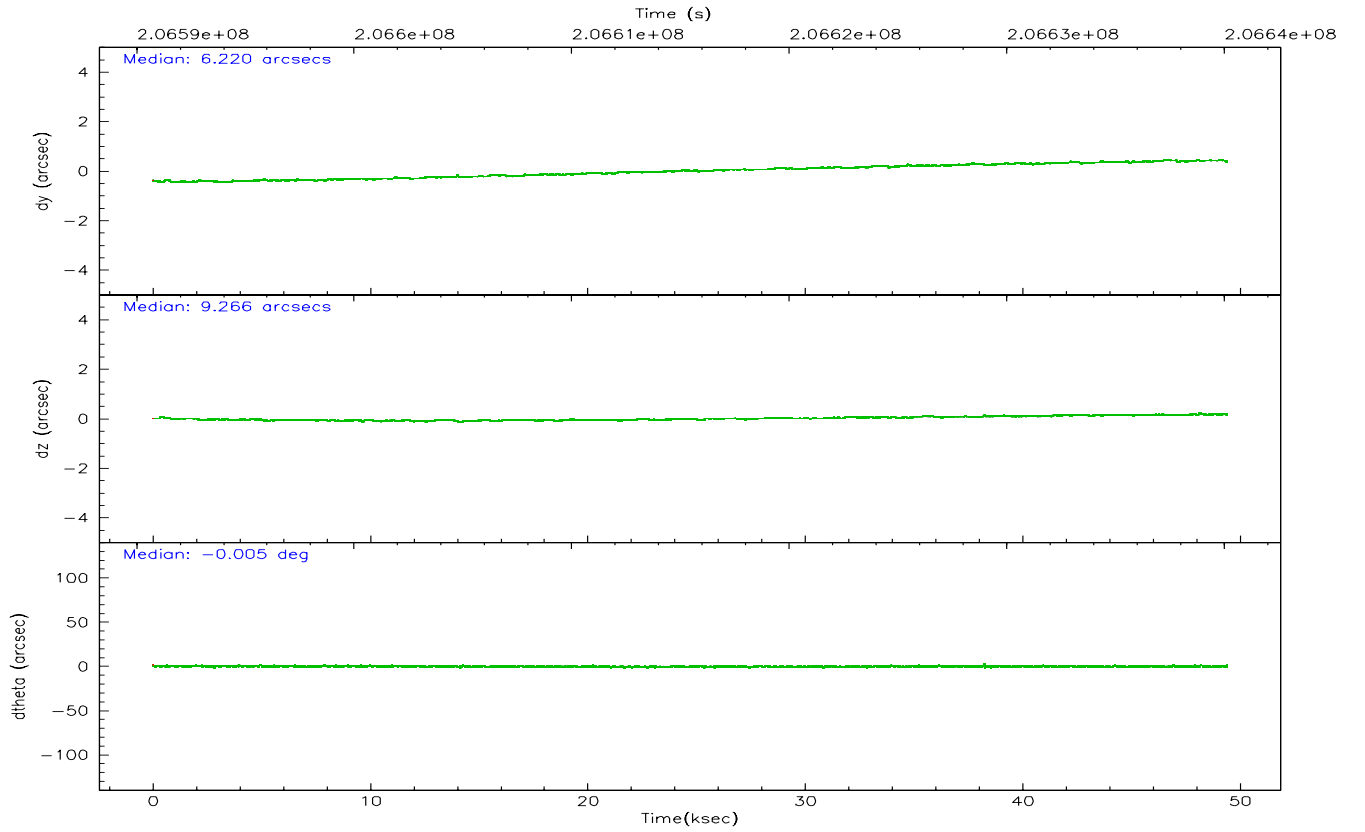
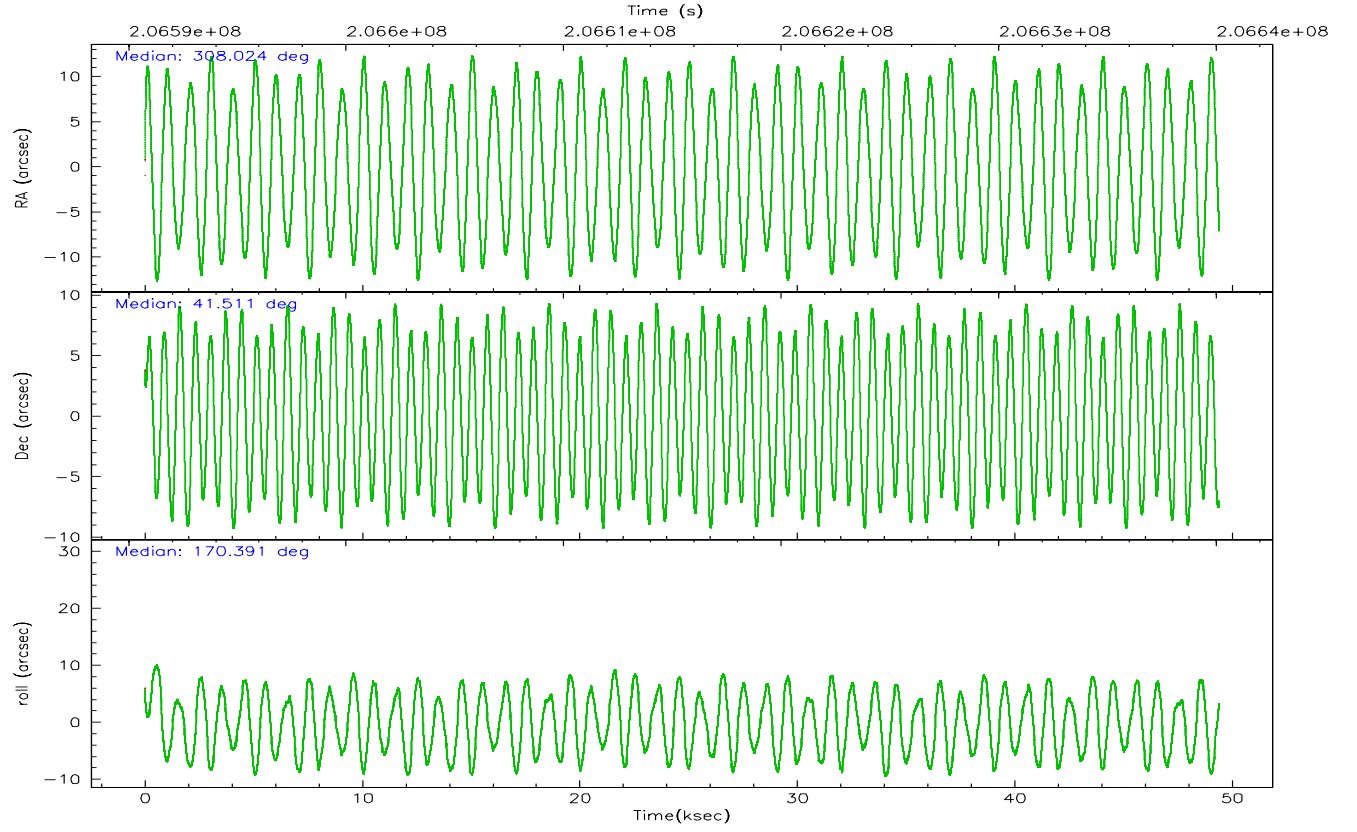
	ccd 0	ccd 1	ccd 2	ccd 3	ccd 7	ccd 8
grade 0 events	21098	21334	23344	29061	17909	62686
	6%	6%	6%	7%	3%	12%
grade 1 events	231	169	214	263	319	514
	0%	0%	0%	0%	0%	0%
grade 2 events	9560	10331	8989	9569	56231	25481
	2%	3%	2%	2%	10%	4%
grade 3 events	4420	4586	4150	4526	12538	11941
	1%	1%	1%	1%	2%	2%
grade 4 events	4071	4496	4121	4495	12426	11427
	1%	1%	1%	1%	2%	2%
grade 5 events	14300	15061	13804	15997	31454	22363
	4%	4%	3%	4%	6%	4%
grade 6 events	7595	8946	6903	7663	118464	26388
	2%	2%	1%	2%	22%	5%
grade 7 events	269525	274218	297267	295677	268714	352391
	81%	80%	82%	80%	51%	68%

2.2 Compared Parameters

Parameter	Planned	Actual	Parameter	Planned	Actual
Instrument	ACIS	ACIS	Obspar format version number	6	6
Detector	ACIS-012378	ACIS-012378	Obspar file type	PREDICTED	ACTUAL
Grating	NONE	NONE	Obspar update status	NONE	UPDATED
Data mode	VFAINT	VFAINT	On-chip summing requested	N	N
Observation mode	POINTING	POINTING	Subarray requested	NONE	NONE
Pointing RA	308.058177	308.0239754976328	Alternating exposures requested	N	N
Pointing Dec	41.520471	41.51082898602954	Primary exposure time	0.000000	3.2
Pointing Roll	170.167811	170.3991730972668			
SIM focus pos (mm)	-0.782348	-0.7809083437167272			
SIM defocus (mm)	0	0.001439871863259334			
SIM translation stage pos (mm)	-233.592463	-233.5874344608287			
SIM translation stage offset (mm)	0	-0.005018542100998502			
Observation start time	206590917.184000	206589873.10828			
Observation start date	2004-07-19T02:20:53	2004-07-19T02:04:33			
Observation end time	206640149.184000	206641053.41055			
Observation end date	2004-07-19T16:01:25	2004-07-19T16:17:33			
Read mode	TIMED	TIMED			

2.3 Aspect



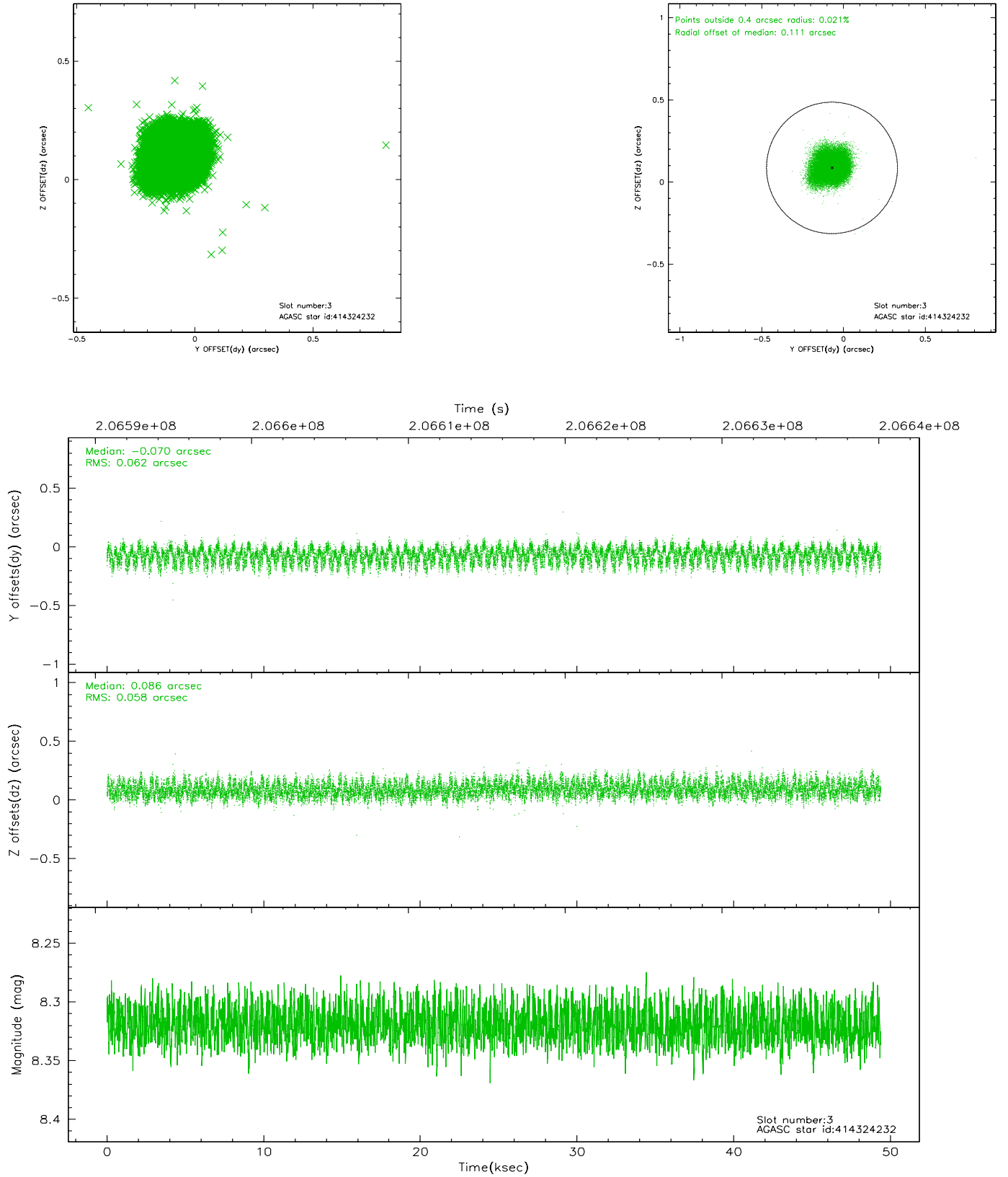


Slot Statistics

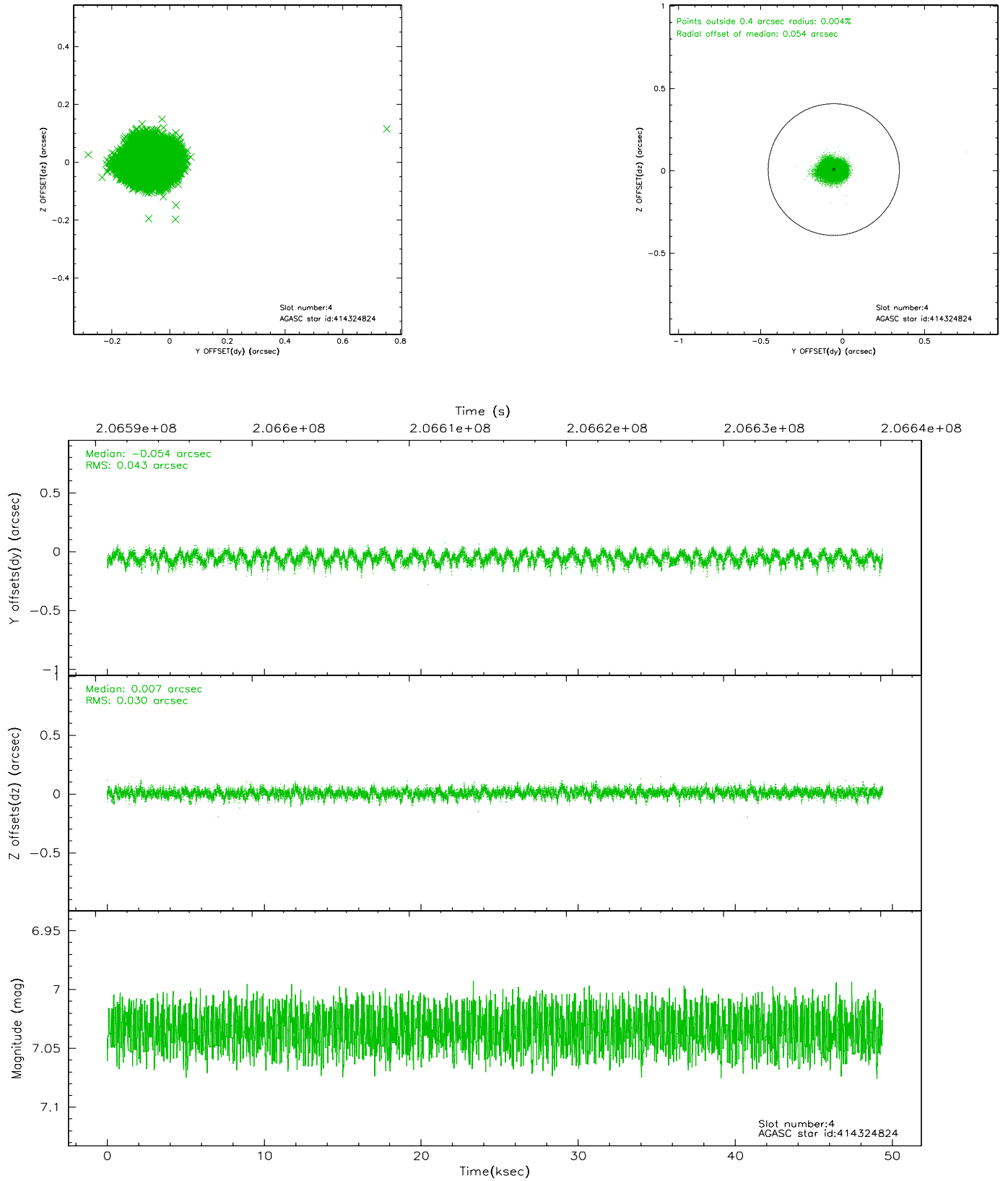
slot	status	id	mag	n_pts	med_dy	med_dz	dr1	dr2	ra	dec	mean_y	mean_z
0	FID	ACIS-I-1	7.24	12049	0.015	0.031	0.012	0.018	0.000000	0.000000	933.54	-832.66
1	FID	ACIS-I-5	7.23	12048	-0.016	0.083	0.019	0.030	0.000000	0.000000	-1814.70	1064.76
2	FID	ACIS-I-6	7.24	12049	-0.089	-0.043	0.014	0.022	0.000000	0.000000	398.88	1709.22
3	GUIDE	414324232	8.32	24087	-0.070	0.086	0.092	0.142	308.637806	41.996627	-1233.96	-1958.76
4	GUIDE	414324824	7.03	24097	-0.054	0.007	0.055	0.088	308.215183	41.898482	-180.71	-1414.83
5	GUIDE	413795864	9.07	24091	-0.015	0.032	0.076	0.126	308.320200	41.030480	-1002.22	1615.59
6	GUIDE	413800040	8.53	24089	-0.037	-0.047	0.069	0.110	308.324931	40.981886	-1045.40	1785.72
7	GUIDE	414189552	9.29	24067	0.172	-0.078	0.153	0.256	307.314504	42.279872	2420.86	-2363.38

2.4 Star Slots

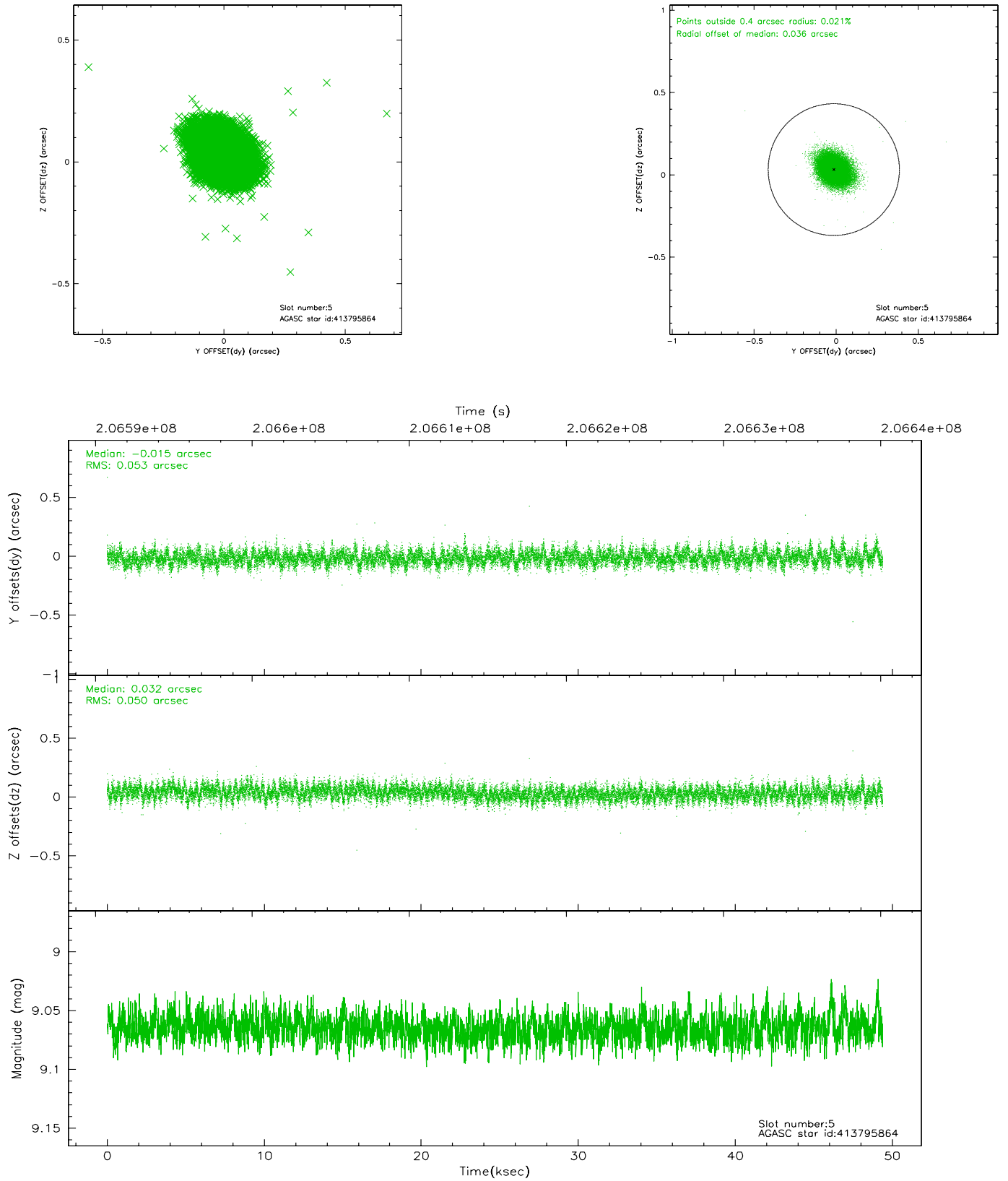
2.4.1 Slot 3



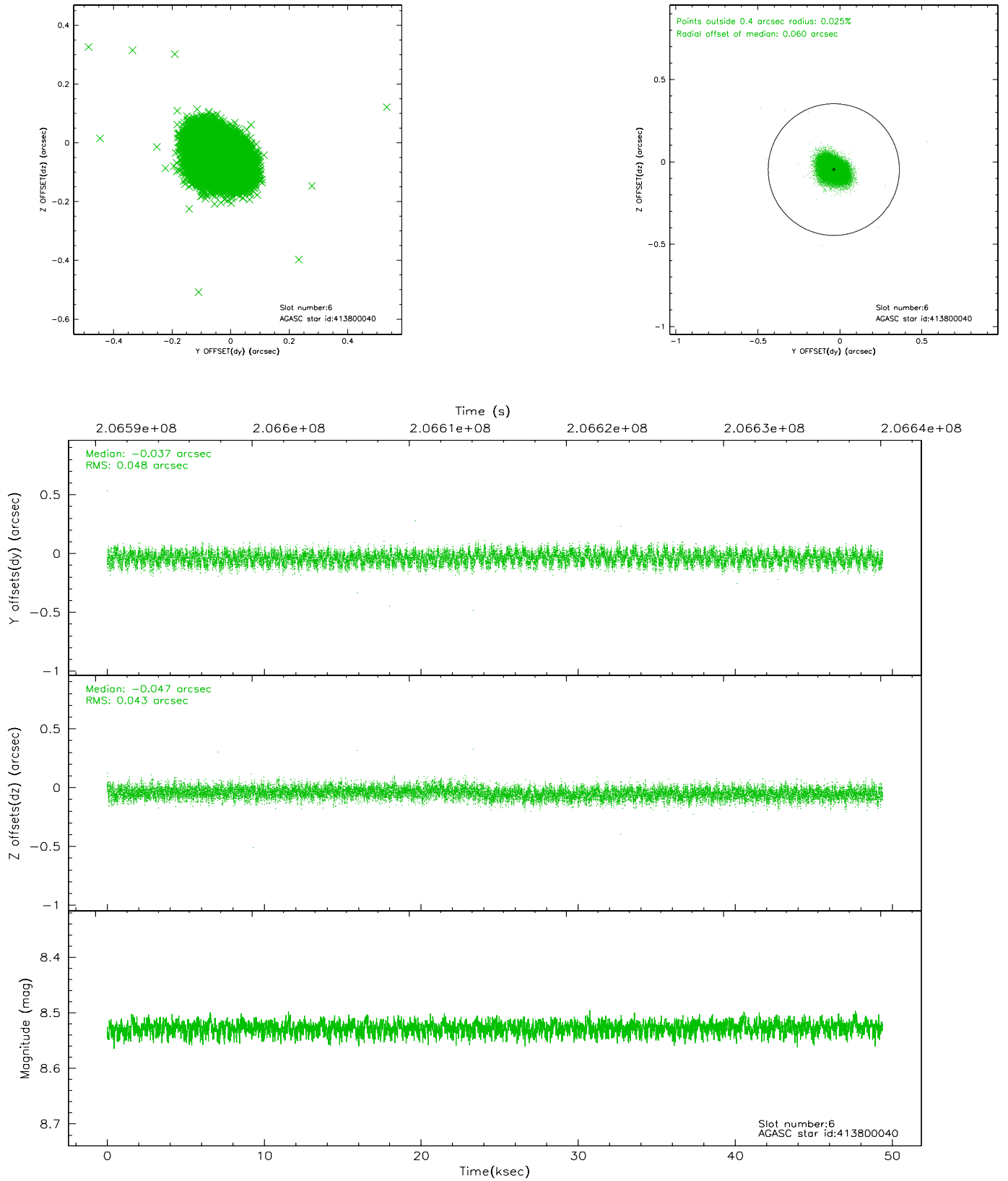
2.4.2 Slot 4



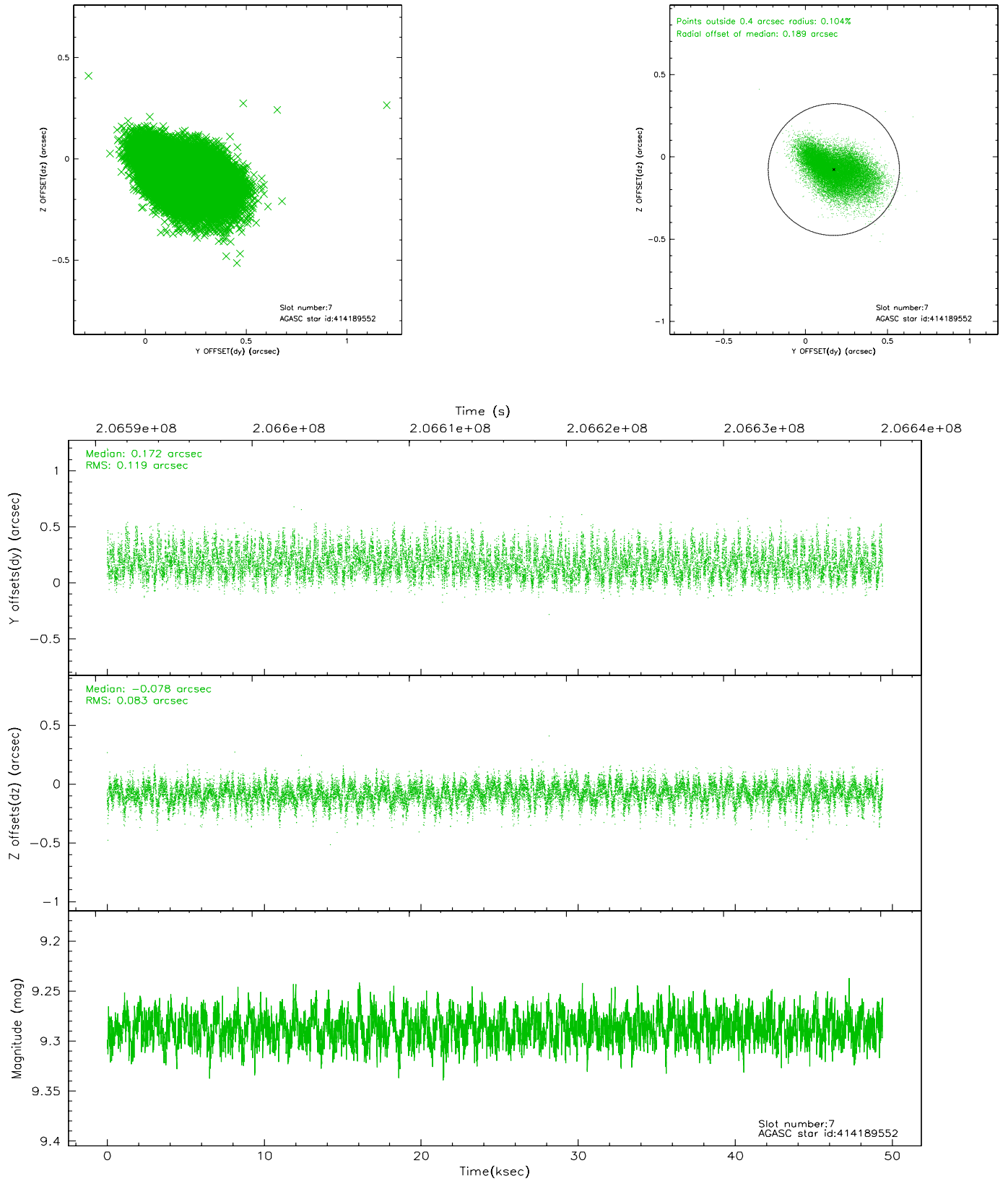
2.4.3 Slot 5



2.4.4 Slot 6

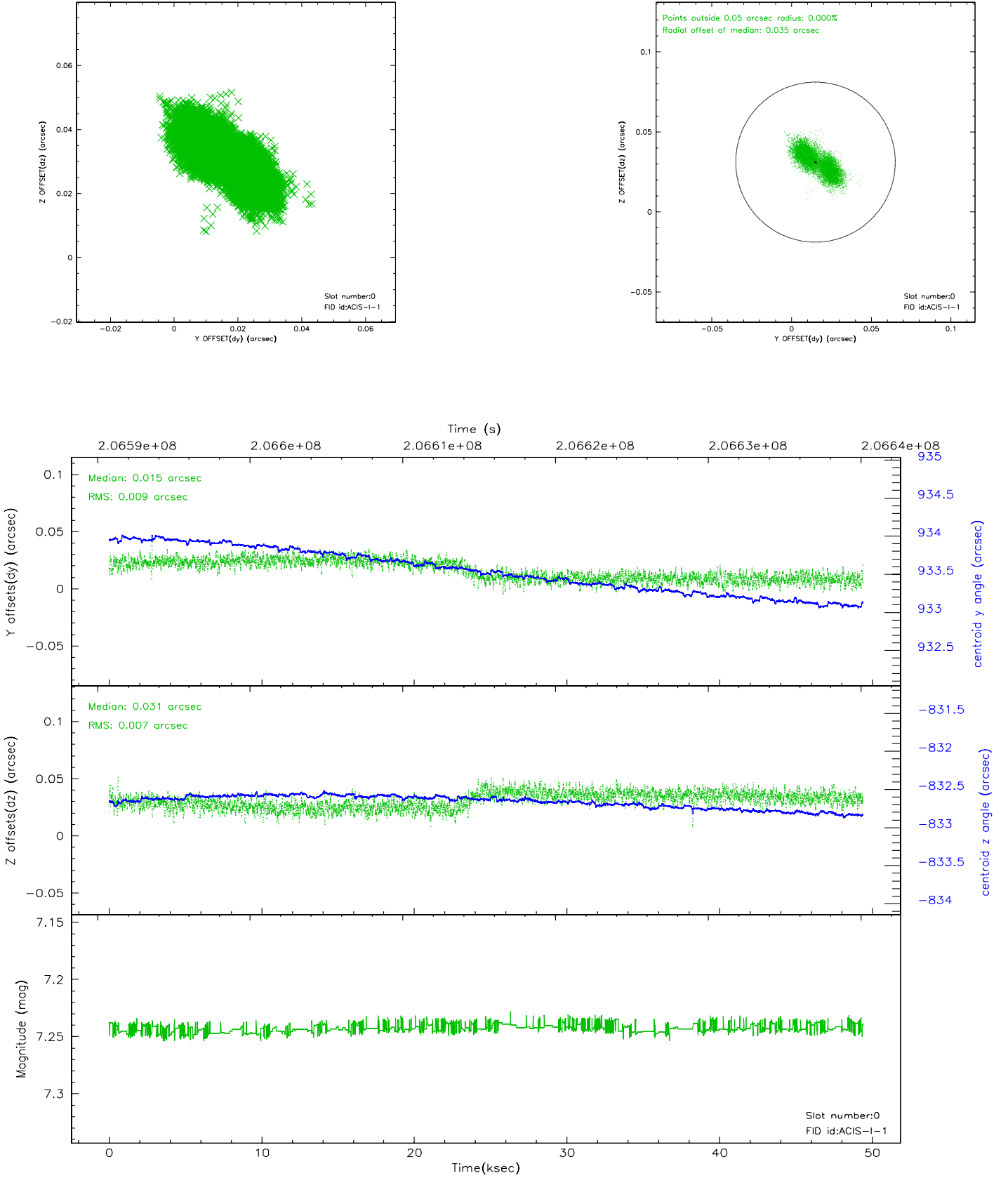


2.4.5 Slot 7

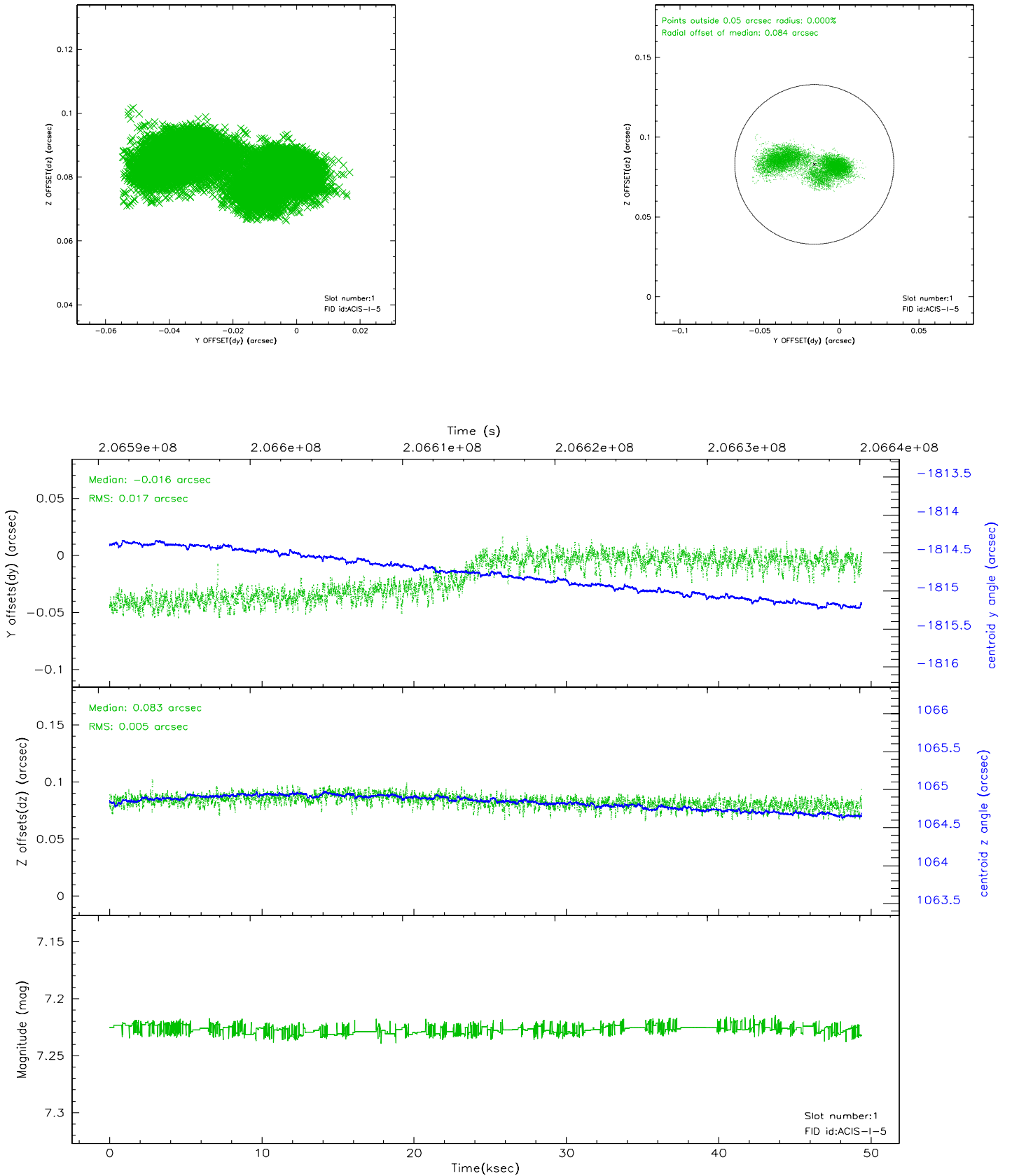


2.5 FID Slots

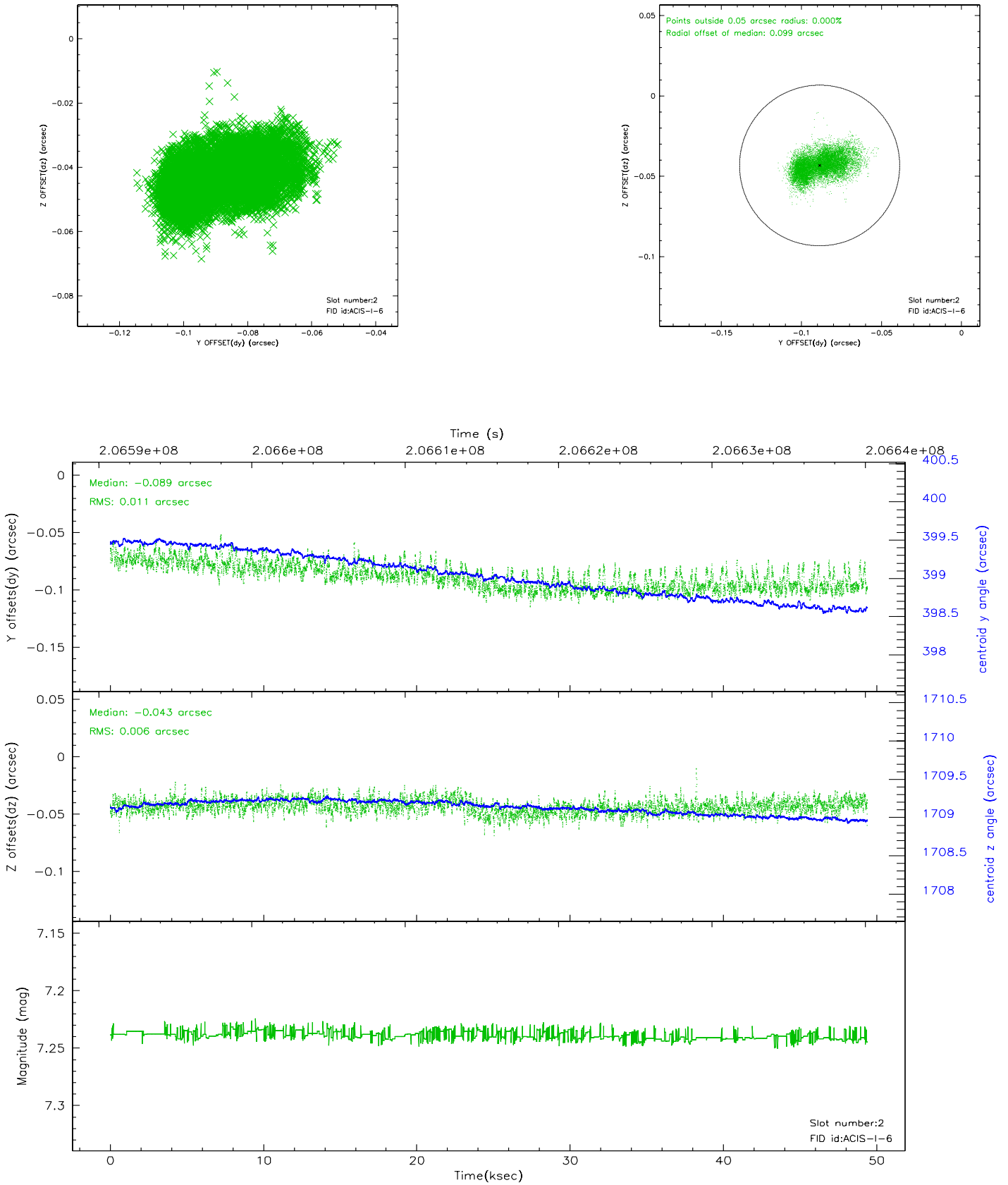
2.5.1 Slot 0



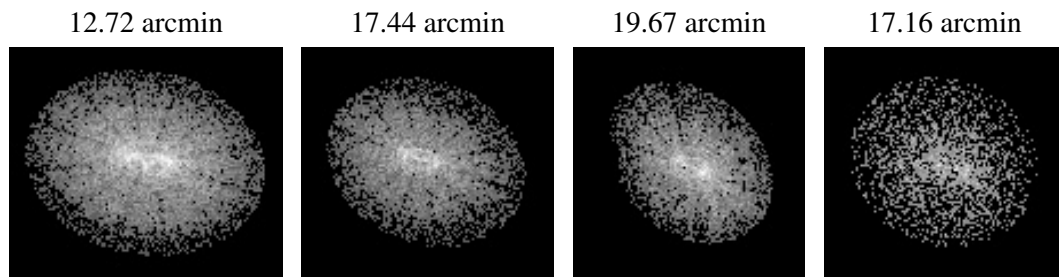
2.5.2 Slot 1



2.5.3 Slot 2



3 Point Sources



A Summary

A.1 Status

V&V Scientist	Beth Sundheim
V&V Date (YYYY-MM-DD)	2006.04.28
V&V Edition	1
V&V Disposition and Status	OK
V&V Charge Time	49.353

A.2 Comments