

V&V Reference Report

L2 ASCDS Version : 7.6.7.2

Observation 4479 - L2 Version 001
Chandra X-Ray Center

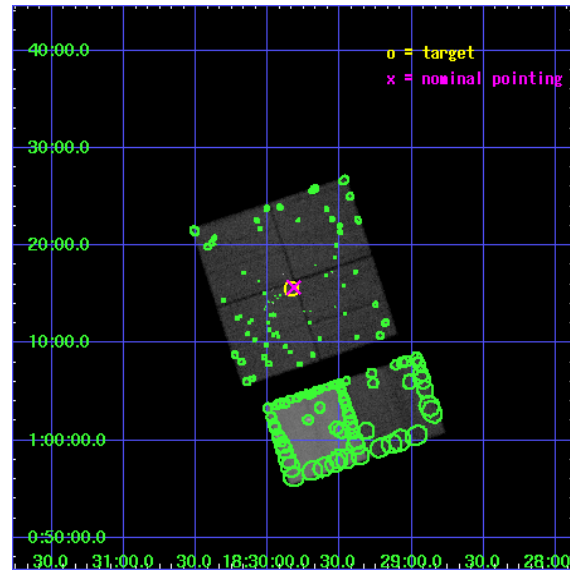
L2 Processing Date : May 23 2006

Contents

1	Front	2
2	OBI	3
2.1	OBI	3
2.1.1	Images	3
2.1.2	Bias	3
2.1.3	Parameters	4
2.1.4	Events	4
2.2	Compared Parameters	5
2.3	Aspect	6
2.4	Star Slots	9
2.4.1	Slot 3	9
2.4.2	Slot 4	10
2.4.3	Slot 5	11
2.4.4	Slot 6	12
2.4.5	Slot 7	13
2.5	FID Slots	14
2.5.1	Slot 0	14
2.5.2	Slot 1	15
2.5.3	Slot 2	16
3	Point Sources	17
A	Summary	18
A.1	Status	18
A.2	Comments	18

1 Front

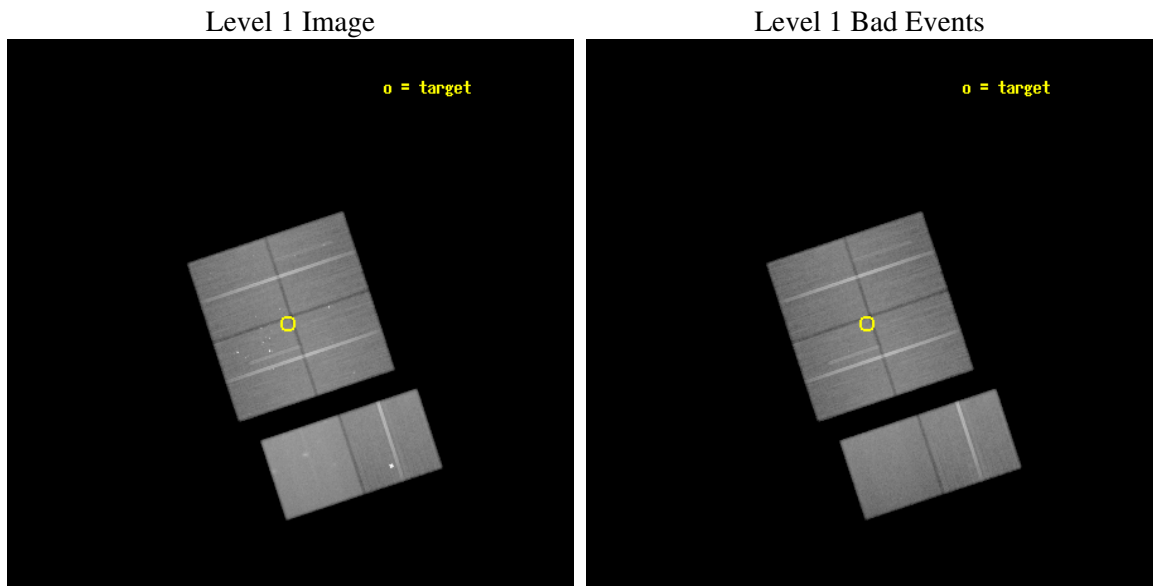
seq_num	200248
obs_id	4479
title	A comprehensive survey of X-ray emission from the earliest phases of star formation
observer	Dr. Fabio Favata
object	Serpens cloud core
dtcycle	0
cycle	P
ra_targ	277.458333
dec_targ	1.258333
ra_nom	277.45486006735
dec_nom	1.2613796815028
roll_nom	161.71878398945
revision	2
ontime	89580.758656114
livetime	88446.433150954
ontime0	89577.517735541
ontime1	89583.999666274
ontime2	89583.999666274
ontime3	89580.758656114
ontime6	89583.999666274
ontime7	89583.999666274
l2events	668694



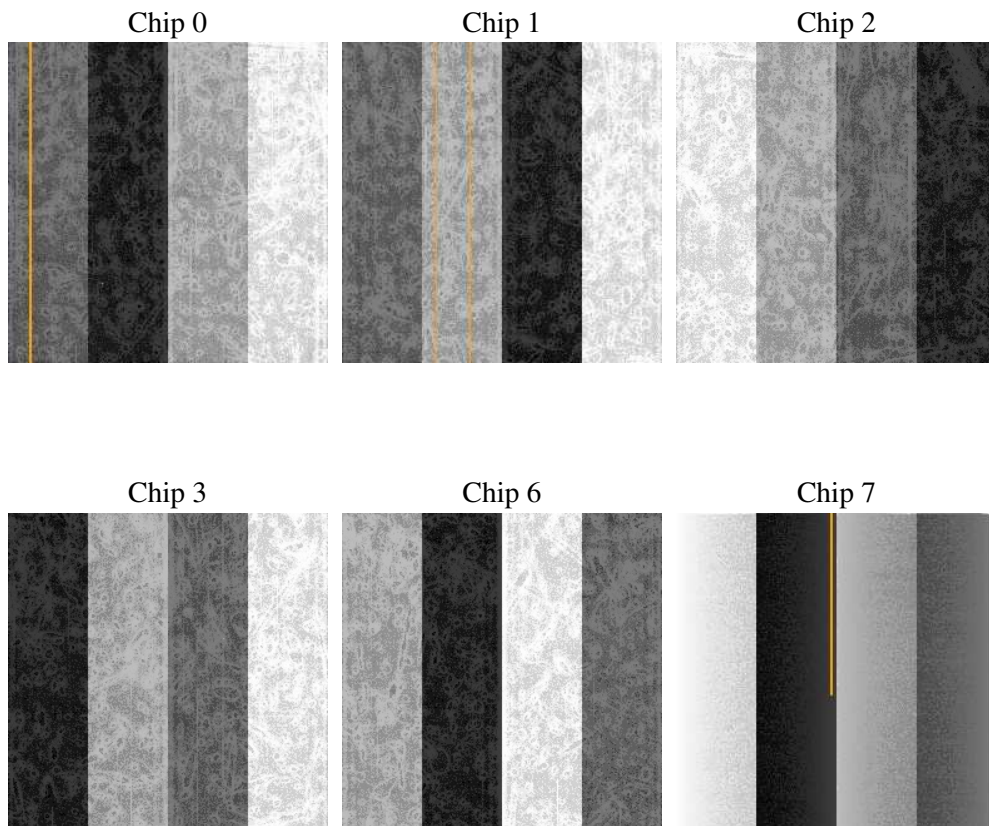
2 OBI

2.1 OBI

2.1.1 Images



2.1.2 Bias



2.1.3 Parameters

obi_num	0
ascdsver	7.6.7.2
caldsver	3.2.2
date	2006-05-23T15:46:43
revision	2

sched_exp_time	89407.000000
ontime	89798.665636301
ontime0	89795.424715728
ontime1	89801.90664646
ontime2	89801.90664646
ontime3	89798.665636301
ontime6	89801.90664646
ontime7	89801.90664646
l1events	4100409

2.1.4 Events

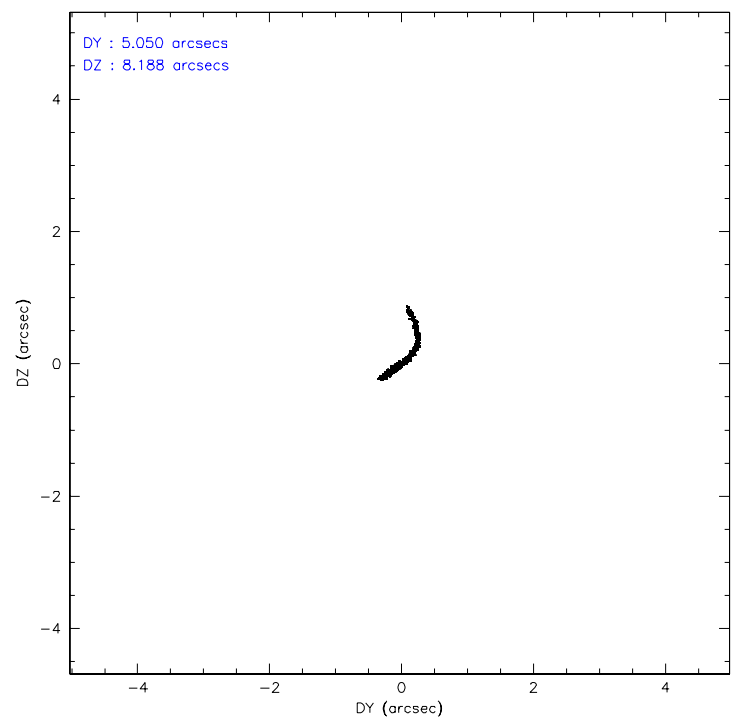
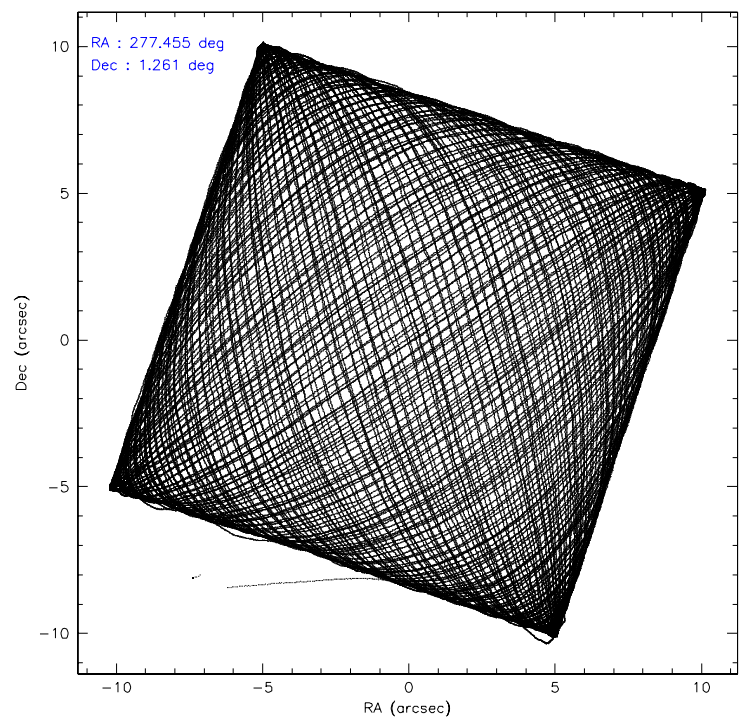
	ccd 0	ccd 1	ccd 2	ccd 3	ccd 6	ccd 7
level 1 events	598814	602262	660202	655688	703193	880250
rejected events	521575	521477	584982	568520	605166	548349
rejected %	87%	86%	88%	86%	86%	62%

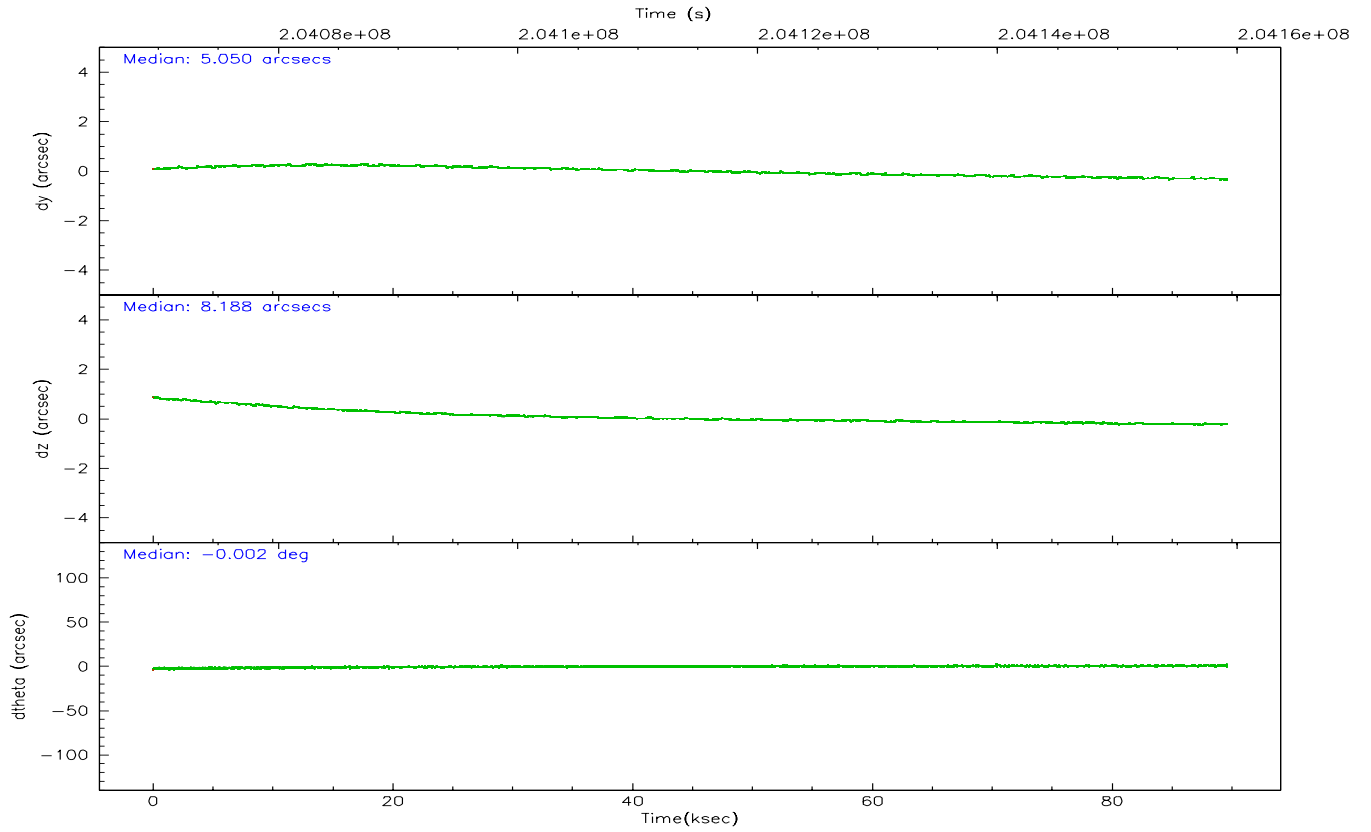
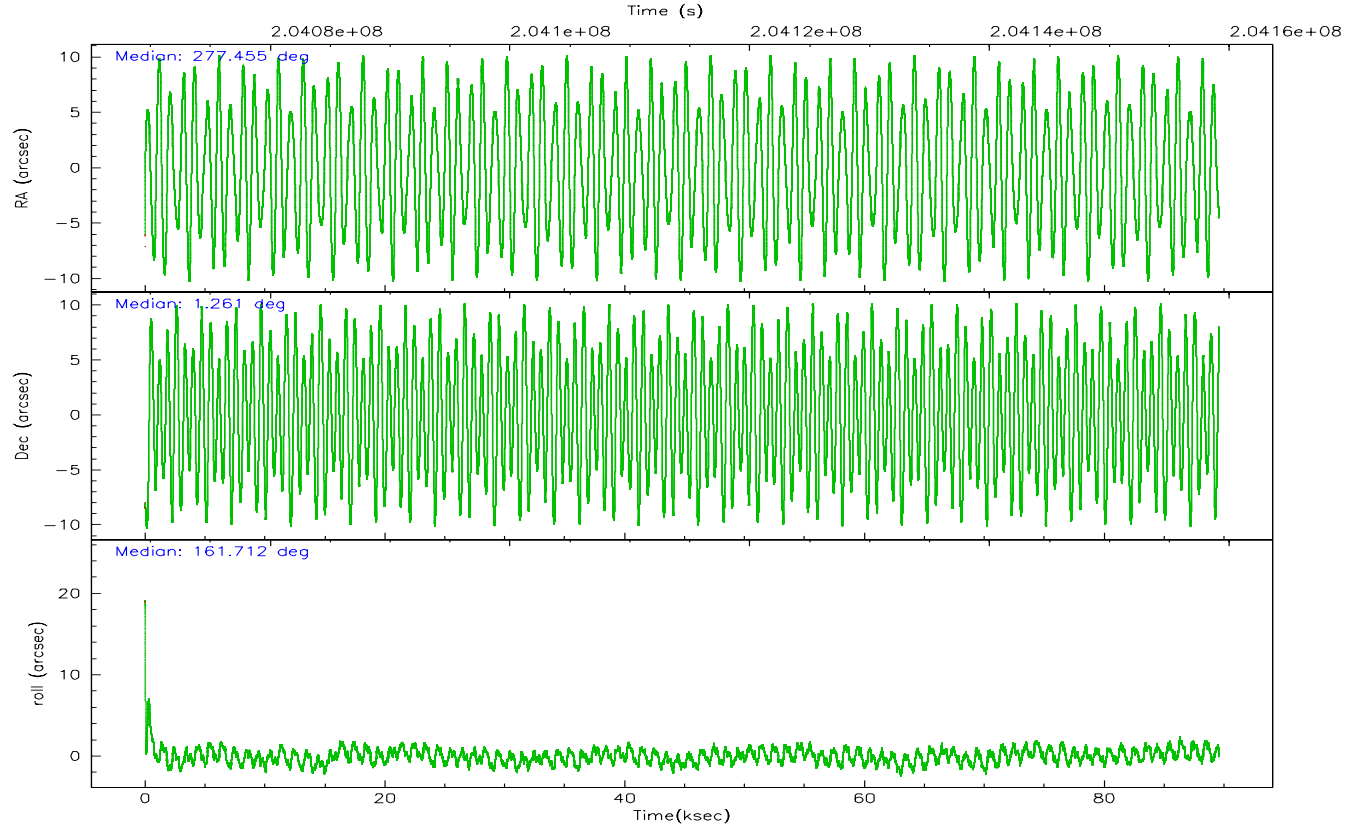
	ccd 0	ccd 1	ccd 2	ccd 3	ccd 6	ccd 7
grade 0 events	32854	31675	33204	41716	50691	18170
	5%	5%	5%	6%	7%	2%
grade 1 events	344	300	355	487	388	559
	0%	0%	0%	0%	0%	0%
grade 2 events	16194	17733	15272	15950	16435	82754
	2%	2%	2%	2%	2%	9%
grade 3 events	7622	7978	7143	7907	7799	16540
	1%	1%	1%	1%	1%	1%
grade 4 events	7037	7923	7193	7827	7378	15992
	1%	1%	1%	1%	1%	1%
grade 5 events	26334	27009	25333	29033	30330	57552
	4%	4%	3%	4%	4%	6%
grade 6 events	13718	15654	12613	13931	15947	199319
	2%	2%	1%	2%	2%	22%
grade 7 events	494711	493990	559089	538837	574225	489364
	82%	82%	84%	82%	81%	55%

2.2 Compared Parameters

Parameter	Planned	Actual	Parameter	Planned	Actual
Instrument	ACIS	ACIS	Obspar format version number	6	6
Detector	ACIS-012367	ACIS-012367	Obspar file type	PREDICTED	ACTUAL
Grating	NONE	NONE	Obspar update status	NONE	UPDATED
Data mode	FAINT	FAINT	On-chip summing requested	N	N
Observation mode	POINTING	POINTING	Subarray requested	NONE	NONE
Pointing RA	277.481644	277.4548600673488	Alternating exposures requested	N	N
Pointing Dec	1.267059	1.261379681502798	Primary exposure time	0.000000	3.2
Pointing Roll	161.509508	161.7187839894503			
SIM focus pos (mm)	-0.782348	-0.7809083437167272			
SIM defocus (mm)	0	0.001439871863259334			
SIM translation stage pos (mm)	-233.592463	-233.5874344608287			
SIM translation stage offset (mm)	0	-0.005018542100998502			
Observation start time	204069739.184000	204068562.10898			
Observation start date	2004-06-19T22:01:15	2004-06-19T21:42:42			
Observation end time	204159146.184000	204159904.98802			
Observation end date	2004-06-20T22:51:22	2004-06-20T23:05:04			
Read mode	TIMED	TIMED			

2.3 Aspect



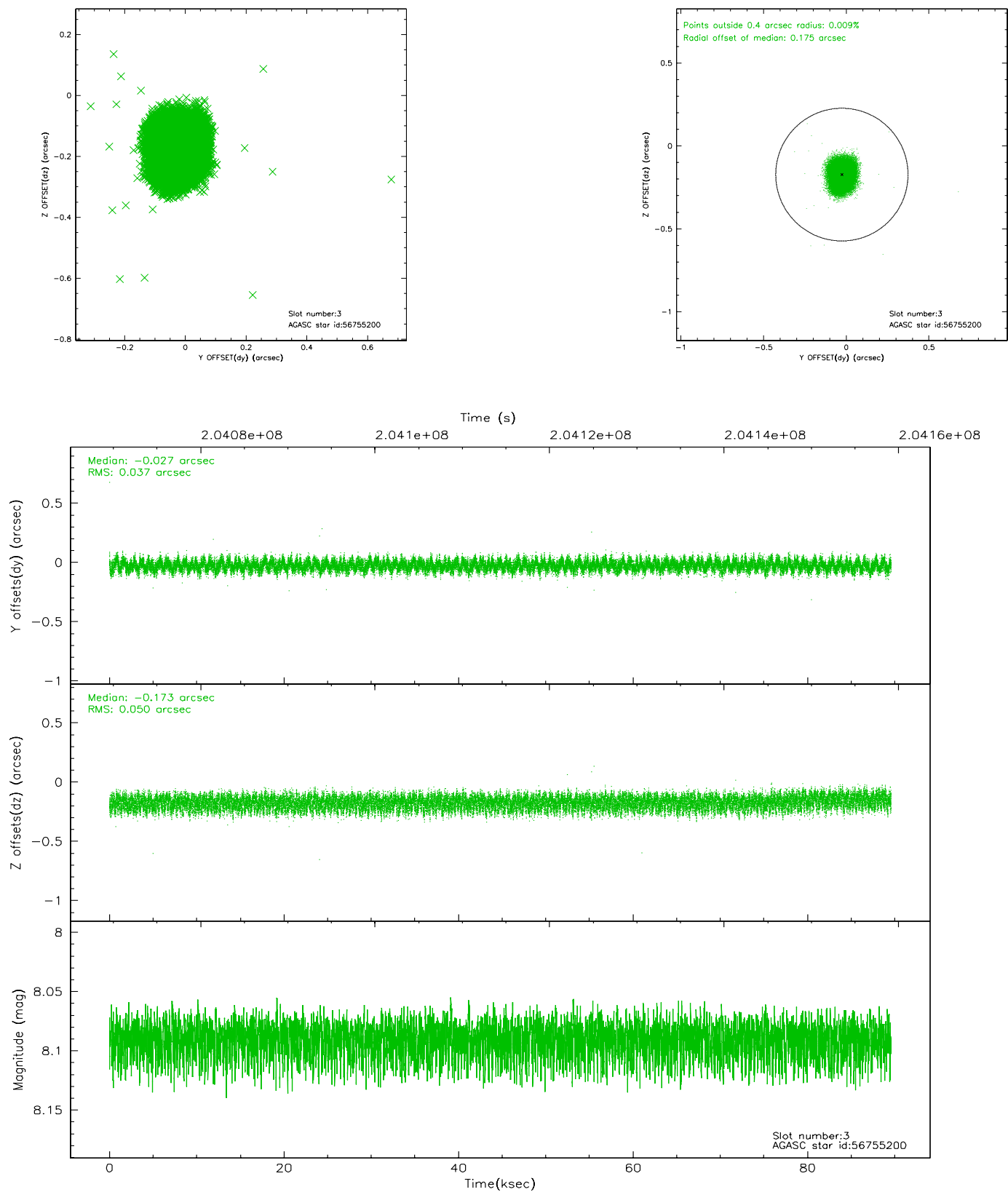


Slot Statistics

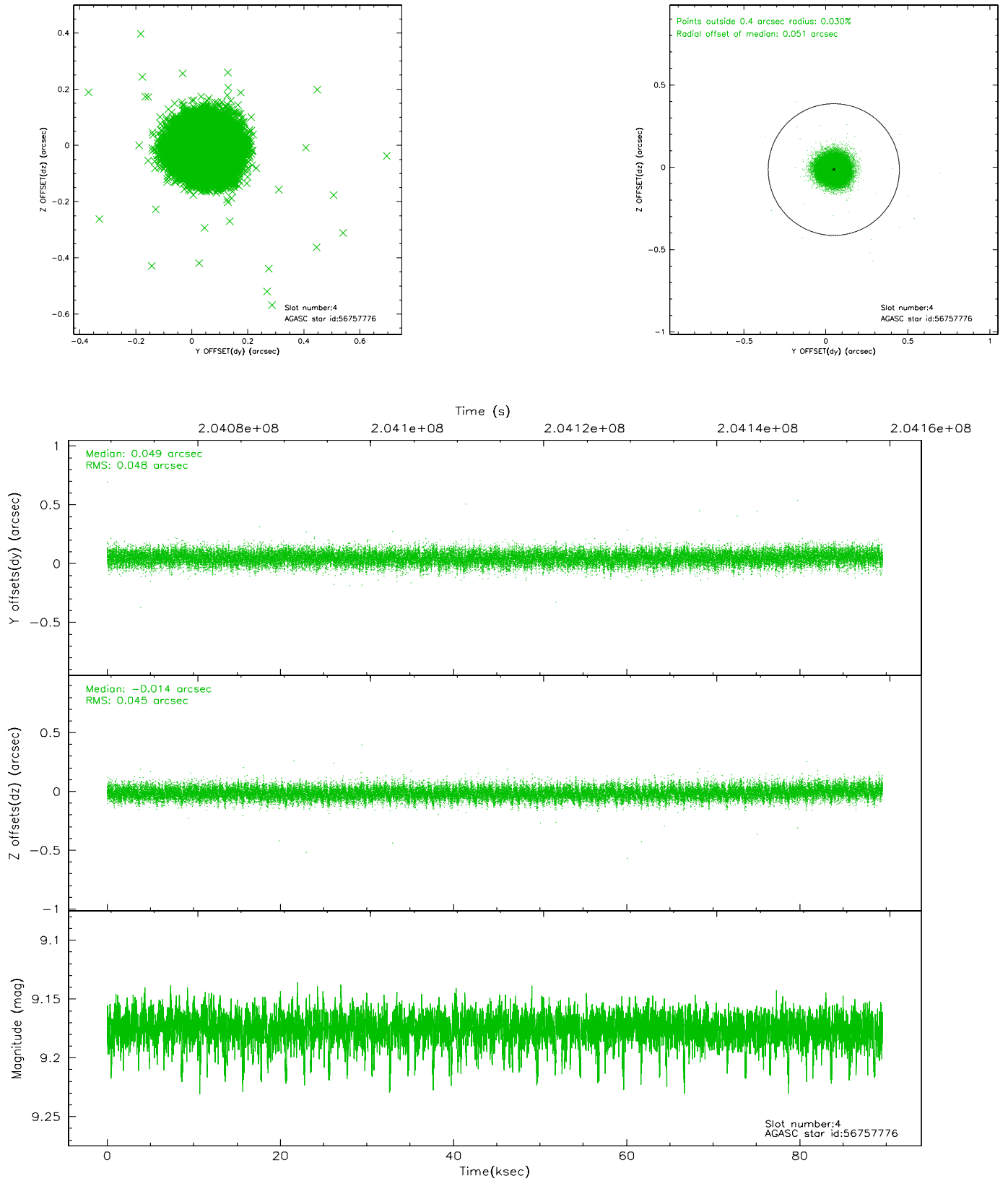
slot	status	id	mag	n_pts	med_dy	med_dz	dr1	dr2	ra	dec	mean_y	mean_z
0	FID	ACIS-I-1	7.24	21851	0.014	0.057	0.016	0.034	0.000000	0.000000	934.70	-831.65
1	FID	ACIS-I-5	7.23	21849	-0.143	0.051	0.011	0.024	0.000000	0.000000	-1813.60	1065.88
2	FID	ACIS-I-6	7.25	21851	0.038	-0.036	0.011	0.019	0.000000	0.000000	400.36	1710.20
3	GUIDE	56755200	8.09	43695	-0.027	-0.173	0.068	0.105	277.143483	0.797062	618.19	1990.80
4	GUIDE	56757776	9.17	43684	0.049	-0.014	0.070	0.114	276.804174	1.118276	2142.90	1281.29
5	GUIDE	56757848	9.02	43680	0.053	0.122	0.093	0.145	276.869135	1.518366	2377.77	-158.68
6	GUIDE	57286536	7.80	43695	-0.159	0.041	0.065	0.115	277.049152	2.007832	2322.00	-2035.62
7	GUIDE	58459296	8.69	43690	0.084	0.022	0.065	0.106	277.787470	1.449641	-834.84	-972.62

2.4 Star Slots

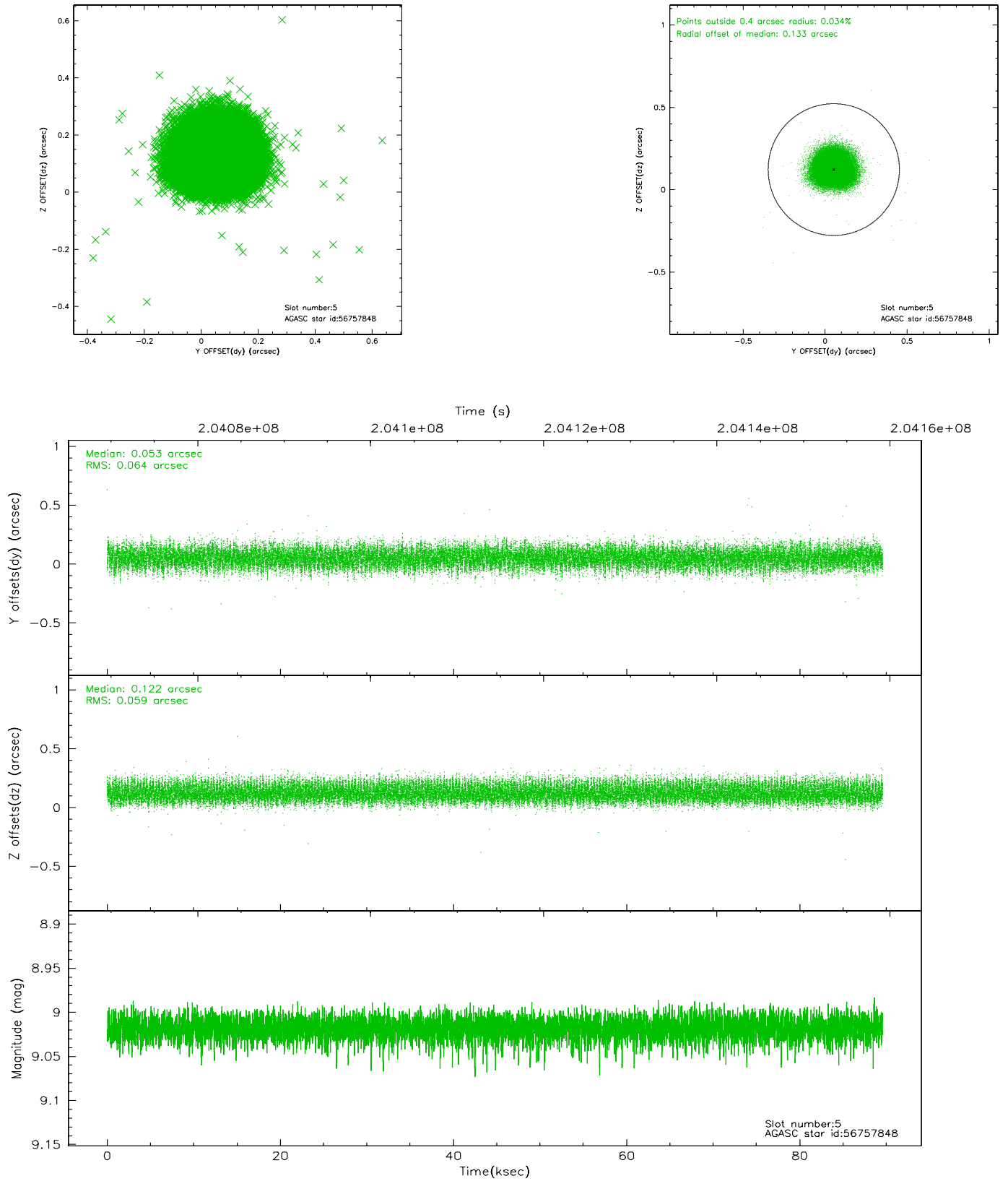
2.4.1 Slot 3



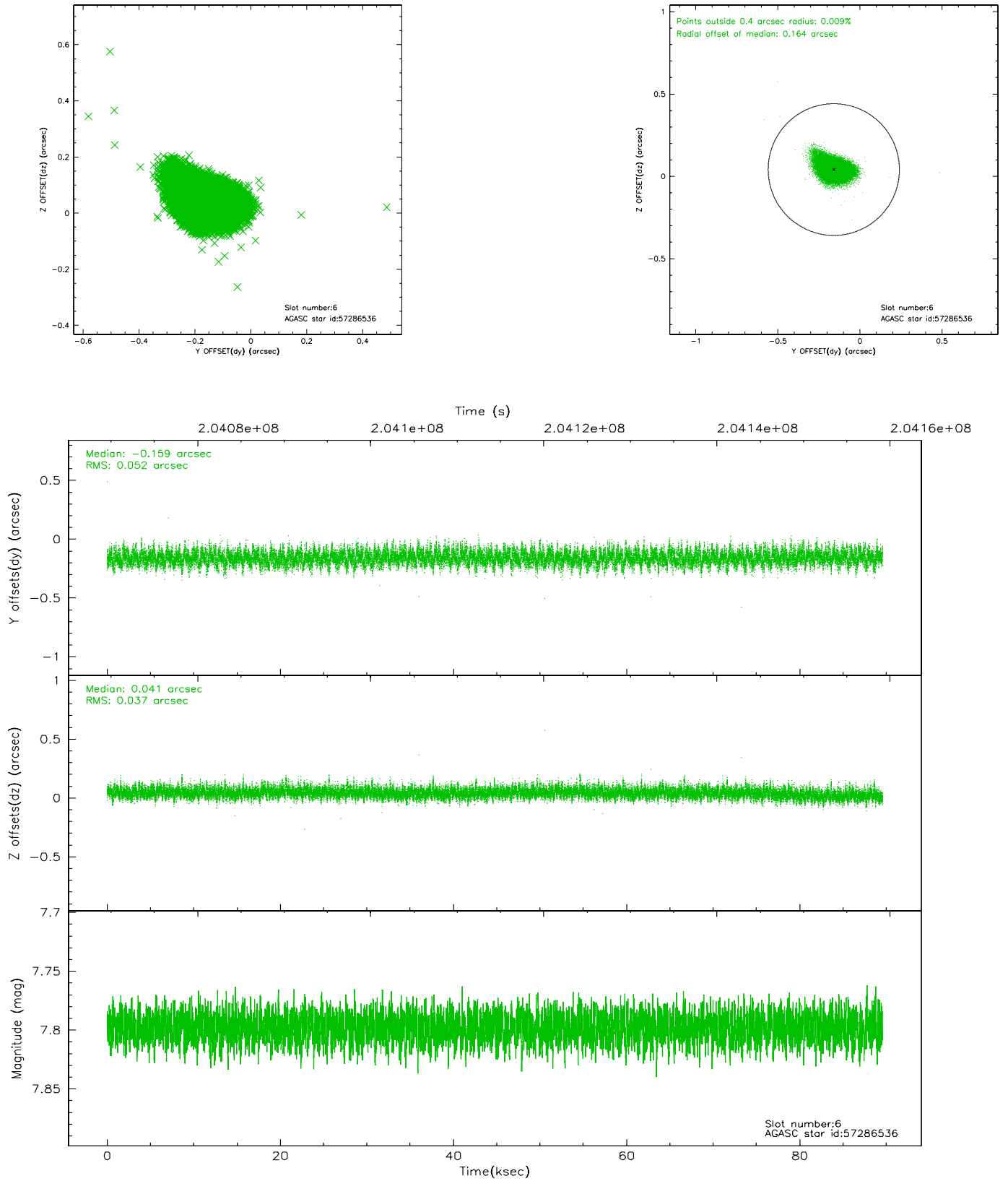
2.4.2 Slot 4



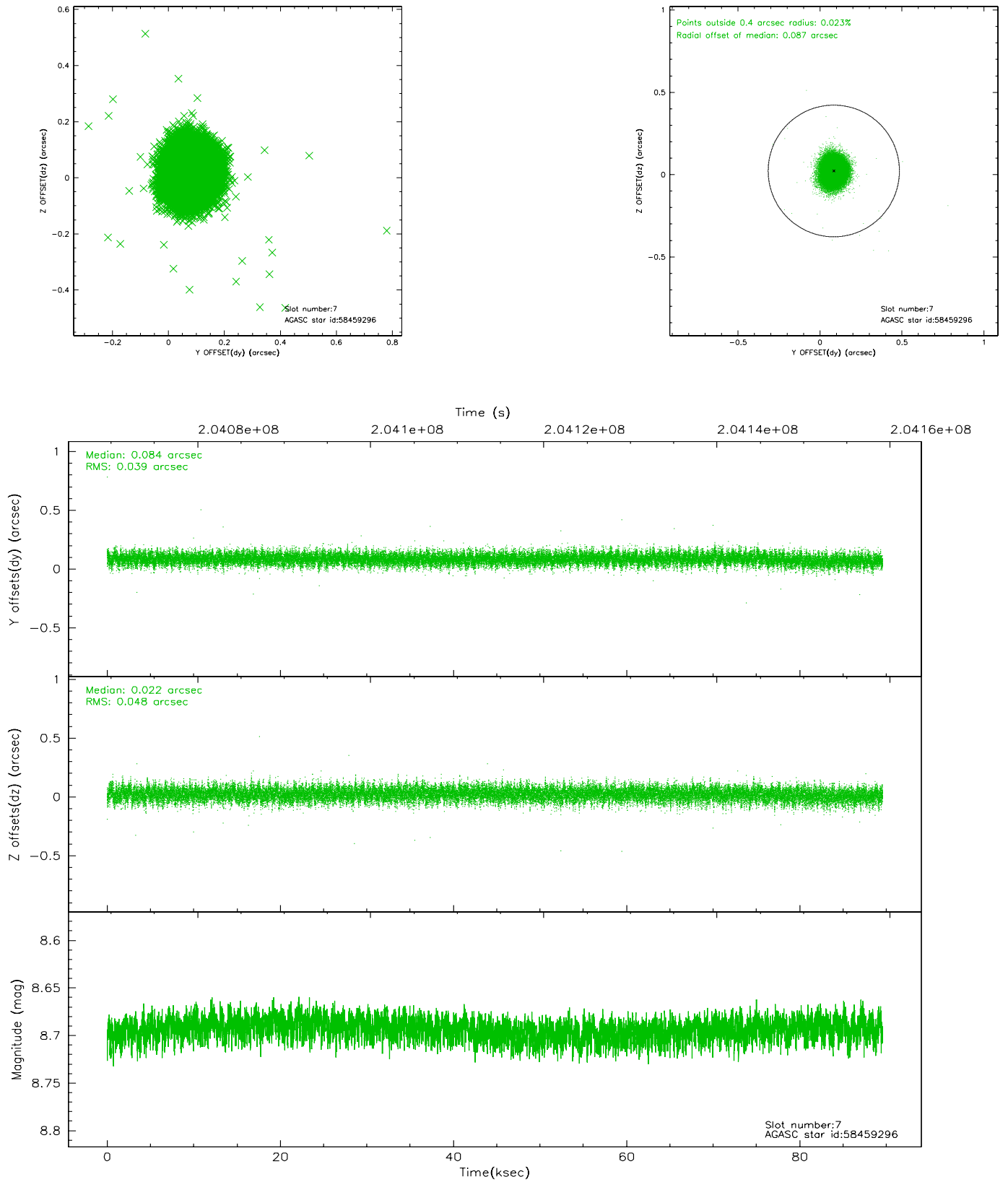
2.4.3 Slot 5



2.4.4 Slot 6

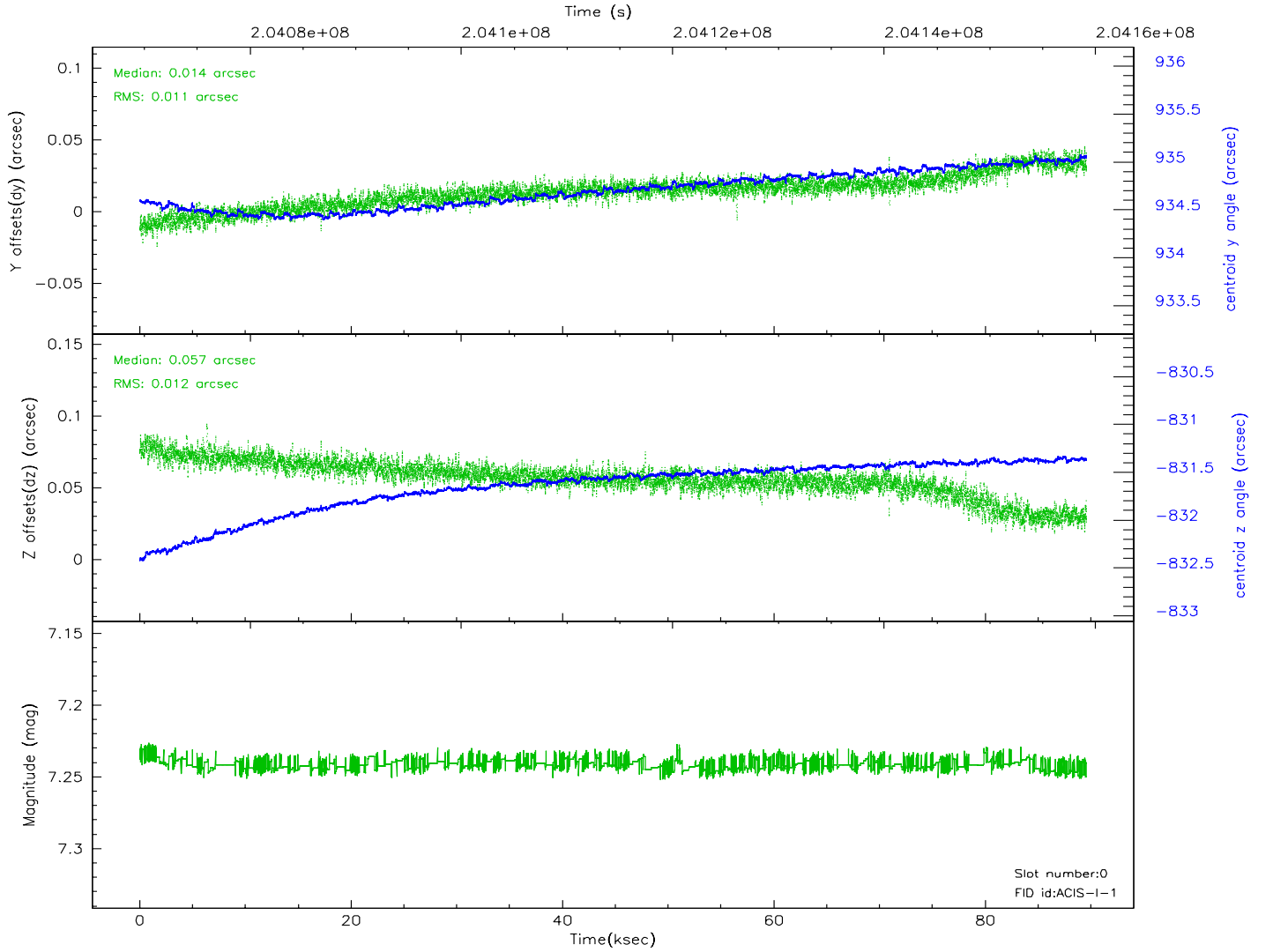
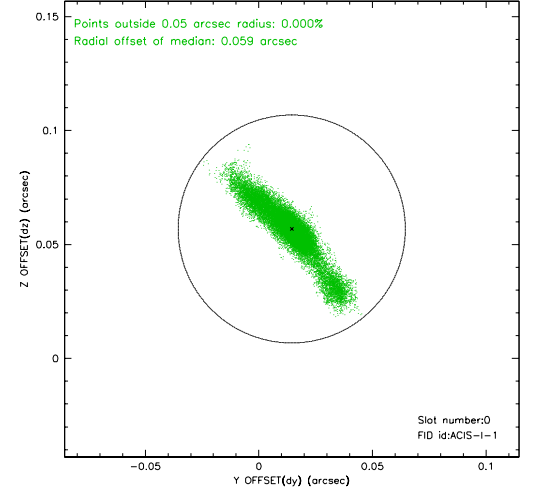
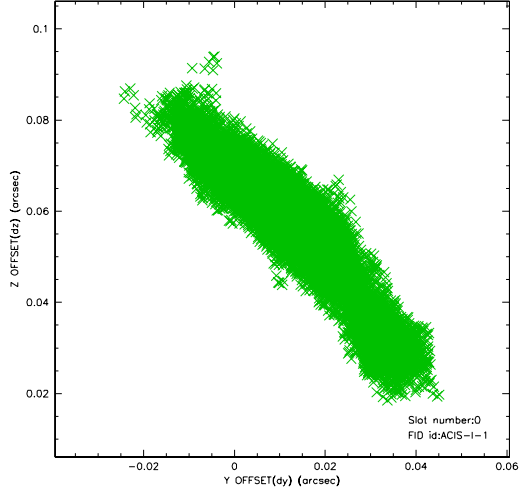


2.4.5 Slot 7

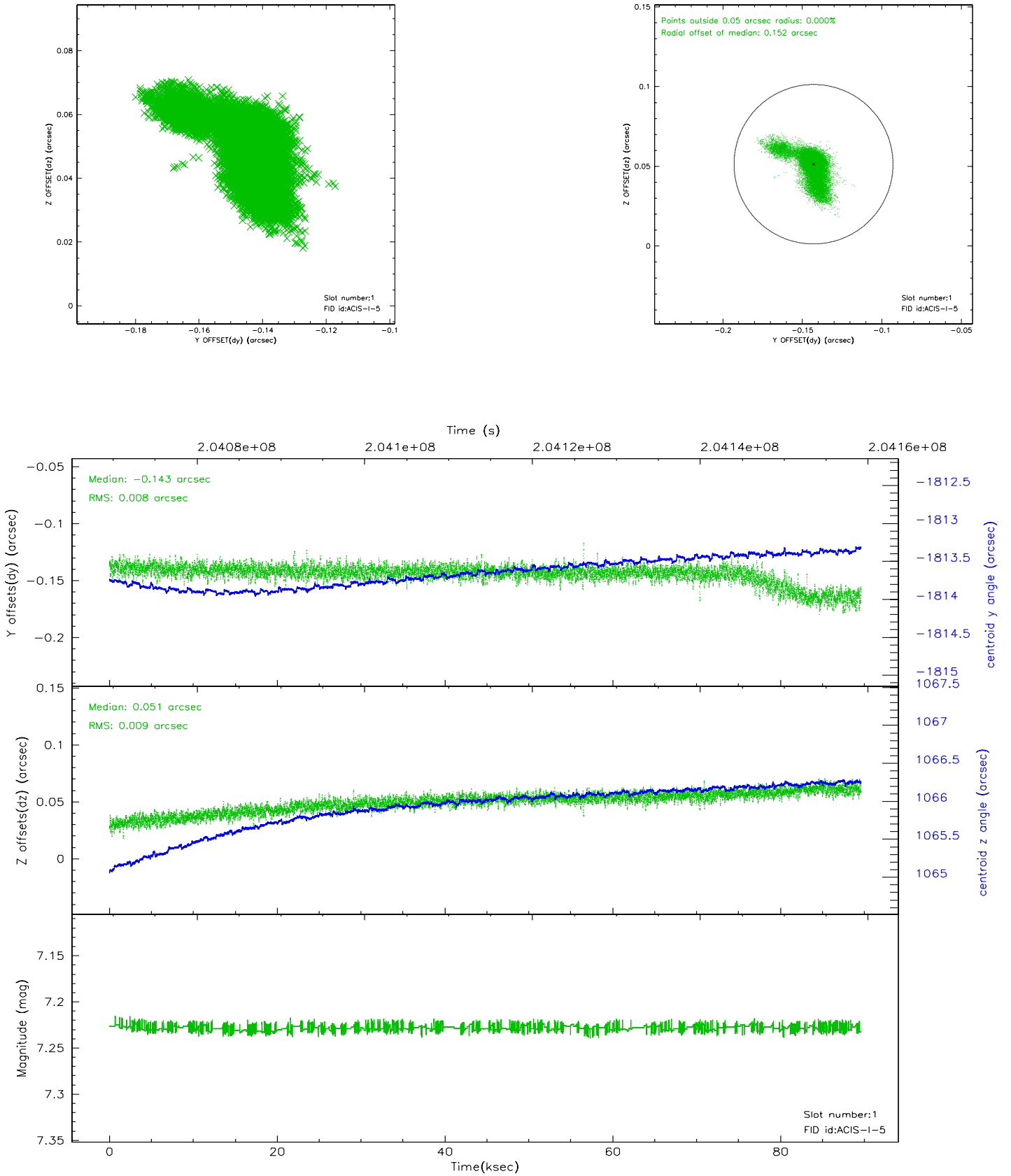


2.5 FID Slots

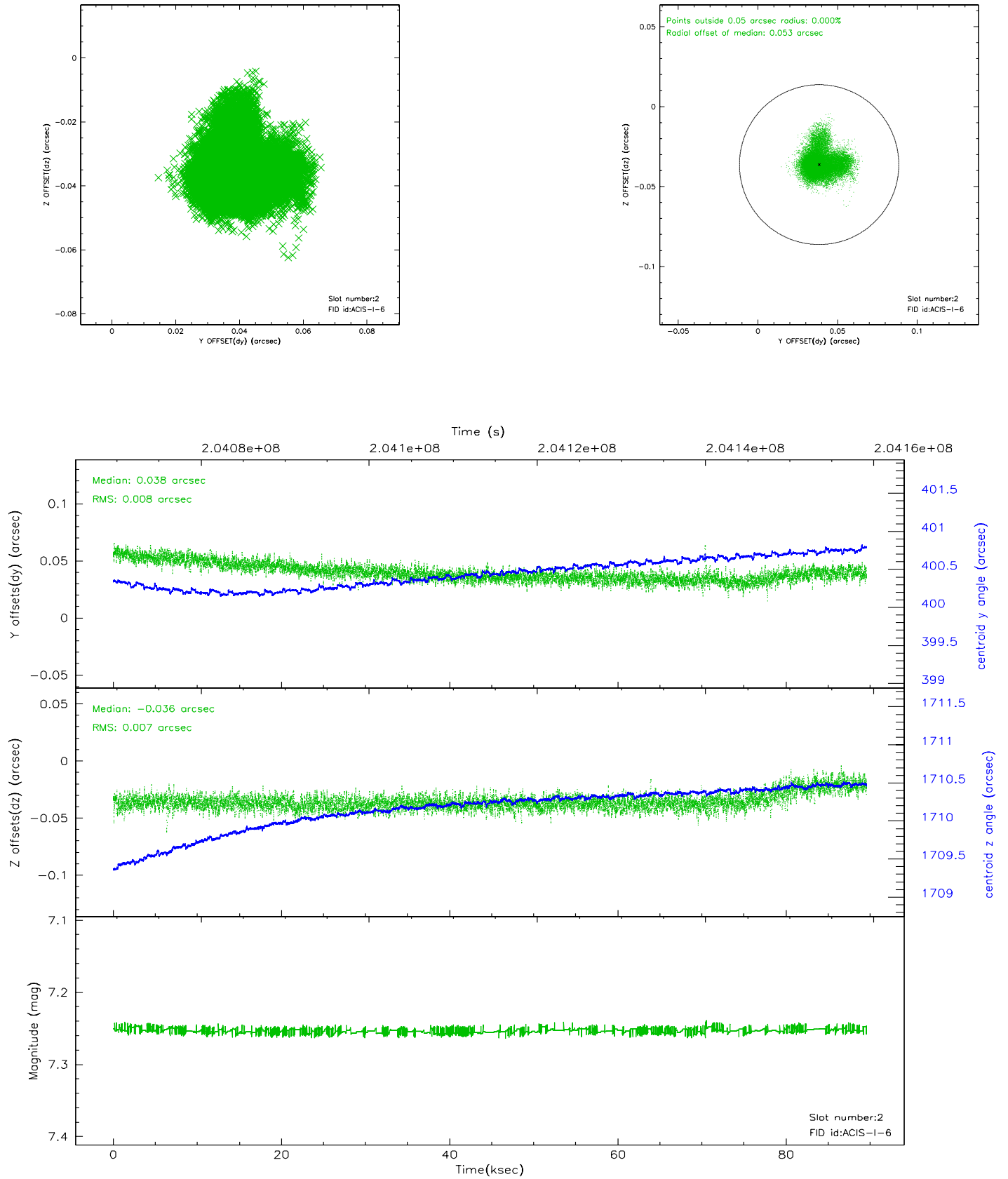
2.5.1 Slot 0



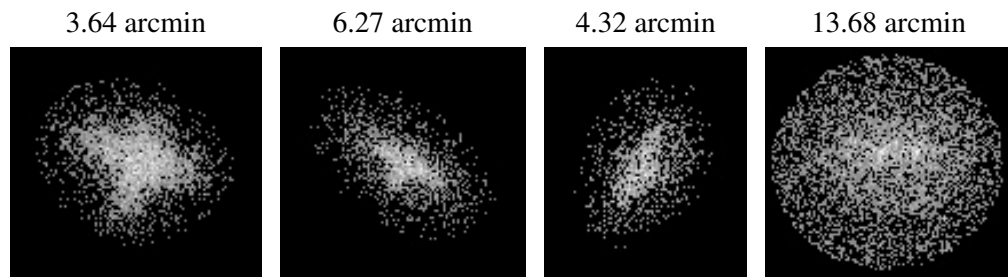
2.5.2 Slot 1



2.5.3 Slot 2



3 Point Sources



A Summary

A.1 Status

V&V Scientist	Beth Sundheim
V&V Date (YYYY-MM-DD)	2006.05.23
V&V Edition	1
V&V Disposition and Status	OK
V&V Charge Time	89.58

A.2 Comments

Focal plane temperature is elevated at start of observation.