

V&V Reference Report

L2 ASCDS Version : 8.4.5

Observation 4475 - L2 Version 3
Chandra X-Ray Center

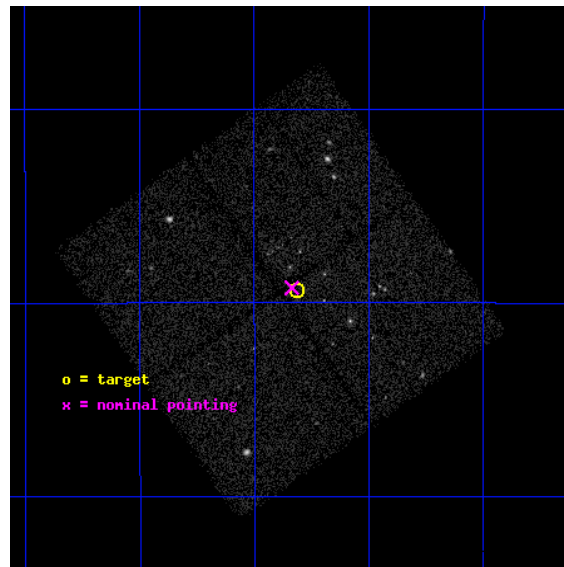
L2 Processing Date : Dec 3 2012

Contents

1	Front	2
2	OBI	3
2.1	OBI	3
2.1.1	Images	3
2.1.2	Bias	3
2.1.3	Parameters	4
2.1.4	Events	4
2.2	Compared Parameters	5
2.3	Aspect	6
2.4	Star Slots	9
2.4.1	Slot 3	9
2.4.2	Slot 4	10
2.4.3	Slot 5	11
2.4.4	Slot 6	12
2.4.5	Slot 7	13
2.5	FID Slots	14
2.5.1	Slot 0	14
2.5.2	Slot 1	15
2.5.3	Slot 2	16
A	Summary	17
A.1	Status	17
A.2	Comments	17

1 Front

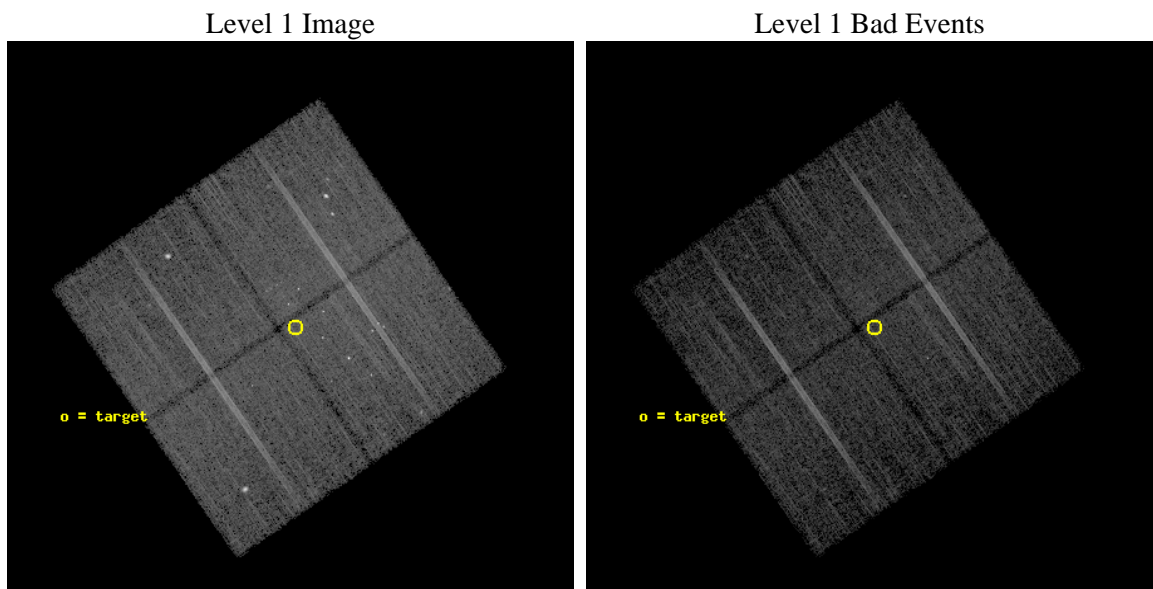
seq_num	200244	Sequence number
obs_id	4475	Observation id
title	Observation of the Core of the RCrA Dark Cloud	Proposal title
observer	Professor Gordon Garmire	Principal investigator
object	RCrADarkCloud	Source name
dtcycle	0	
cycle	P	events from which exps? Prim/Second/Both
ra_targ	285.454083	Observer's specified target RA [deg]
dec_targ	-36.989628	Observer's specified target Dec [deg]
ra_nom	285.45900334034	Nominal RA [deg]
dec_nom	-36.987160735552	Nominal Dec [deg]
roll_nom	55.175870377891	Nominal Roll [deg]
revision	3	Processing version of data
ontime	20171.61796084	Sum of GTIs [s]
livetime	19908.060922053	Livetime [s]
ontime0	20177.899961174	Sum of GTIs [s]
ontime1	20174.758971035	Sum of GTIs [s]
ontime2	20174.759010822	Sum of GTIs [s]
ontime3	20171.61796084	Sum of GTIs [s]
l2events	55065	Number of level 2 events



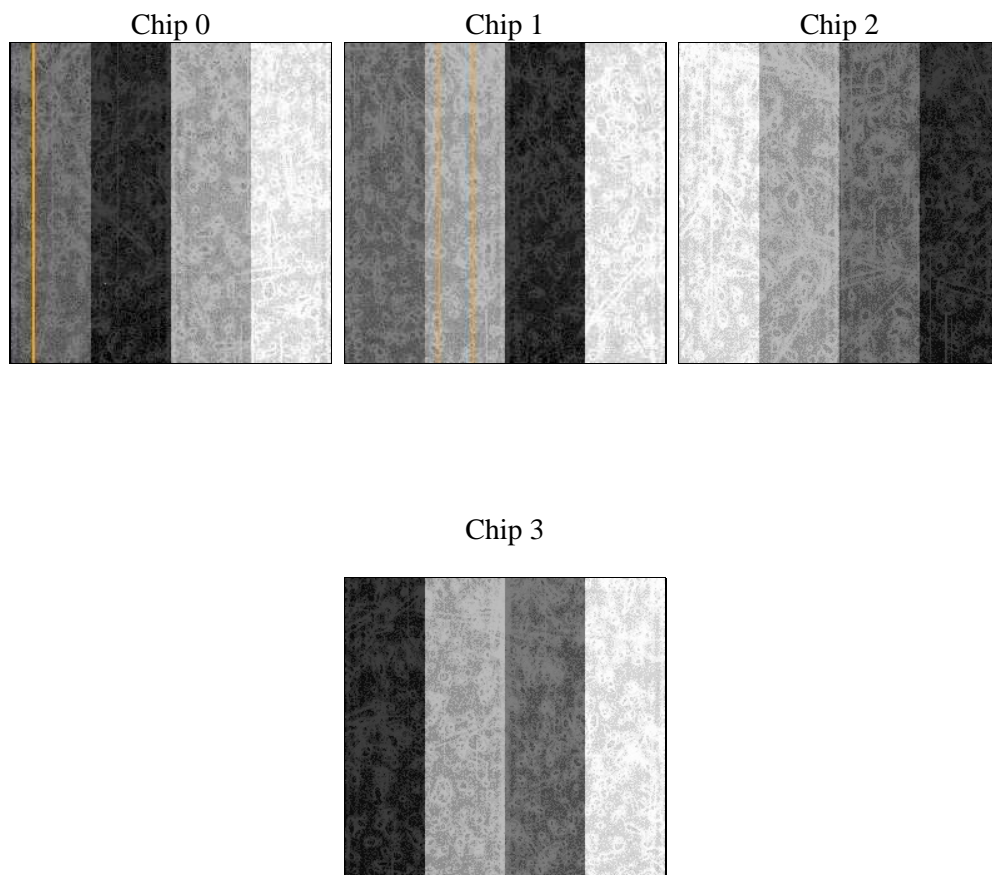
2 OBI

2.1 OBI

2.1.1 Images



2.1.2 Bias



2.1.3 Parameters

obi_num	2	Obi number	sched_exp_time	20000.000000	[s] Scheduled observation exposure time
ascdsver	8.4.5	Processing system revision	ontime	20171.61796084	Sum of GTIs [s]
caldsver	4.5.2	 	ontime0	20177.899961174	Sum of GTIs [s]
date	2012-12-03T04:34:50	Date and time of file creation	ontime1	20174.758971035	Sum of GTIs [s]
revision	3	Processing version of data	ontime2	20174.759010822	Sum of GTIs [s]
			ontime3	20171.61796084	Sum of GTIs [s]
			l1events	486155	Number of level 1 events

2.1.4 Events

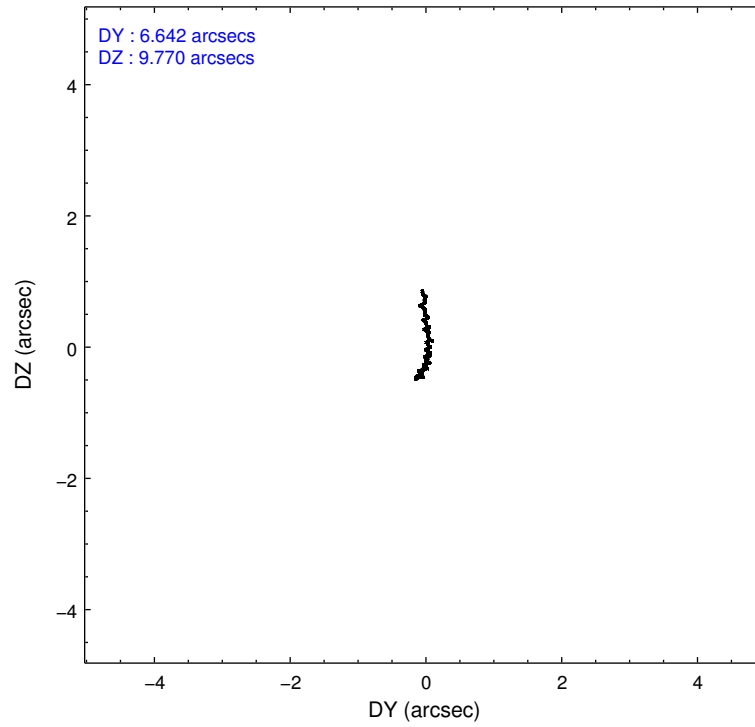
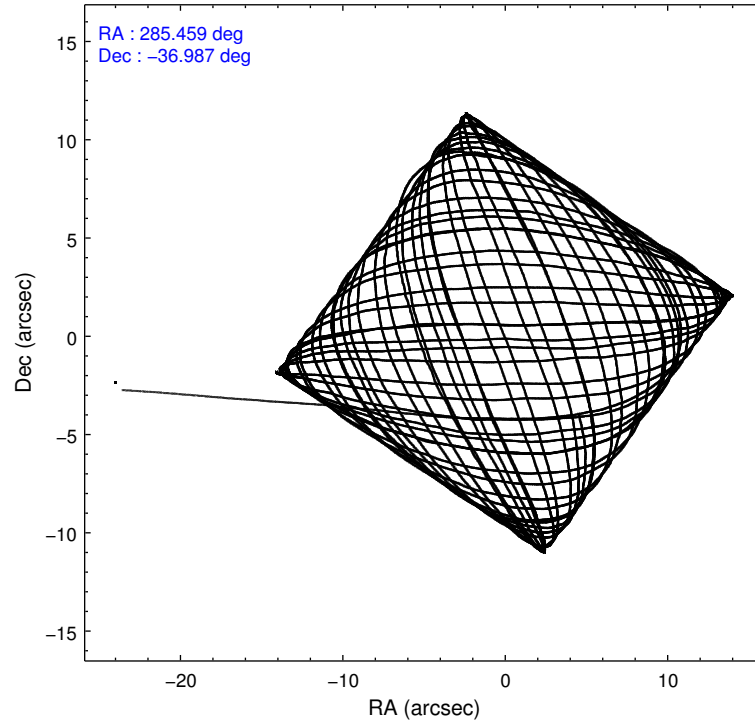
	ccd 0	ccd 1	ccd 2	ccd 3
level 1 events	112076	113062	133976	127041
rejected events	97902	98203	116067	110024
rejected %	87%	86%	86%	86%

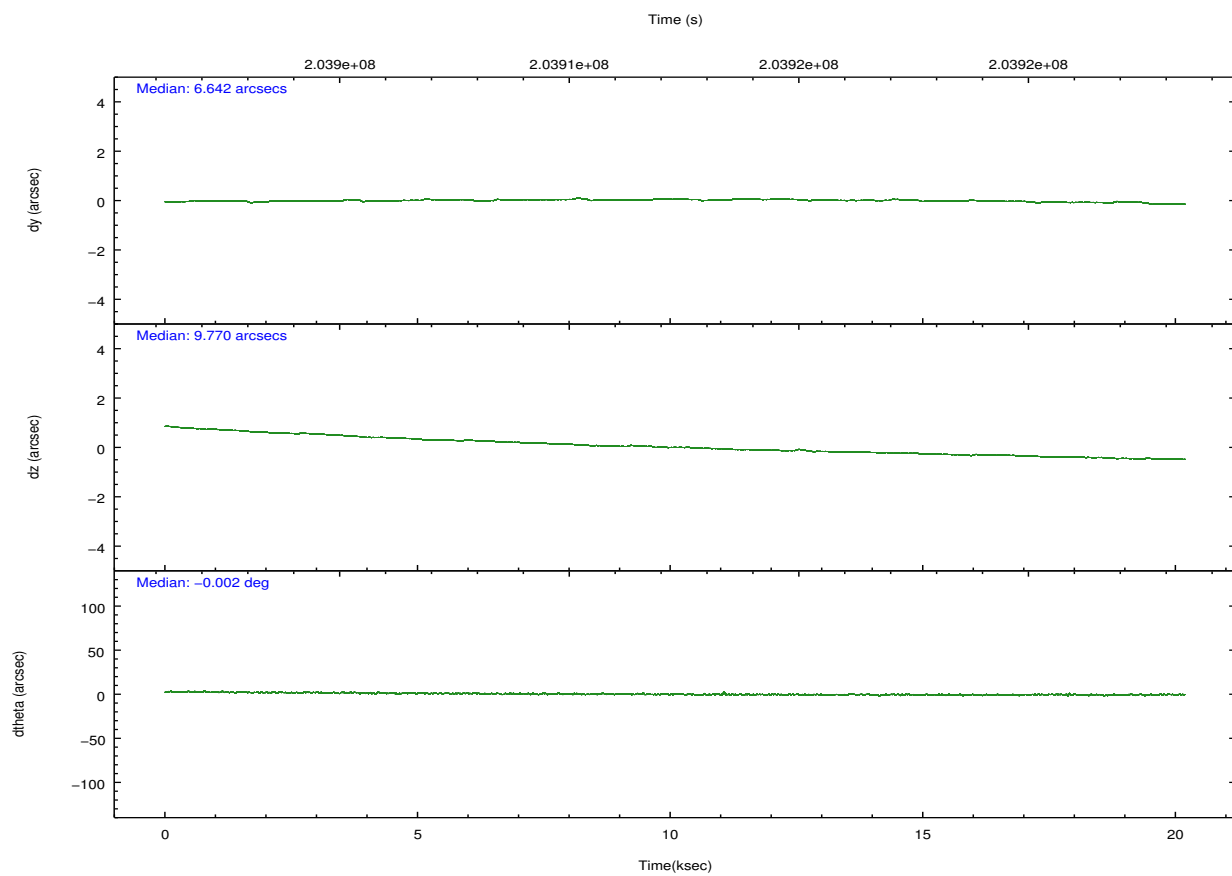
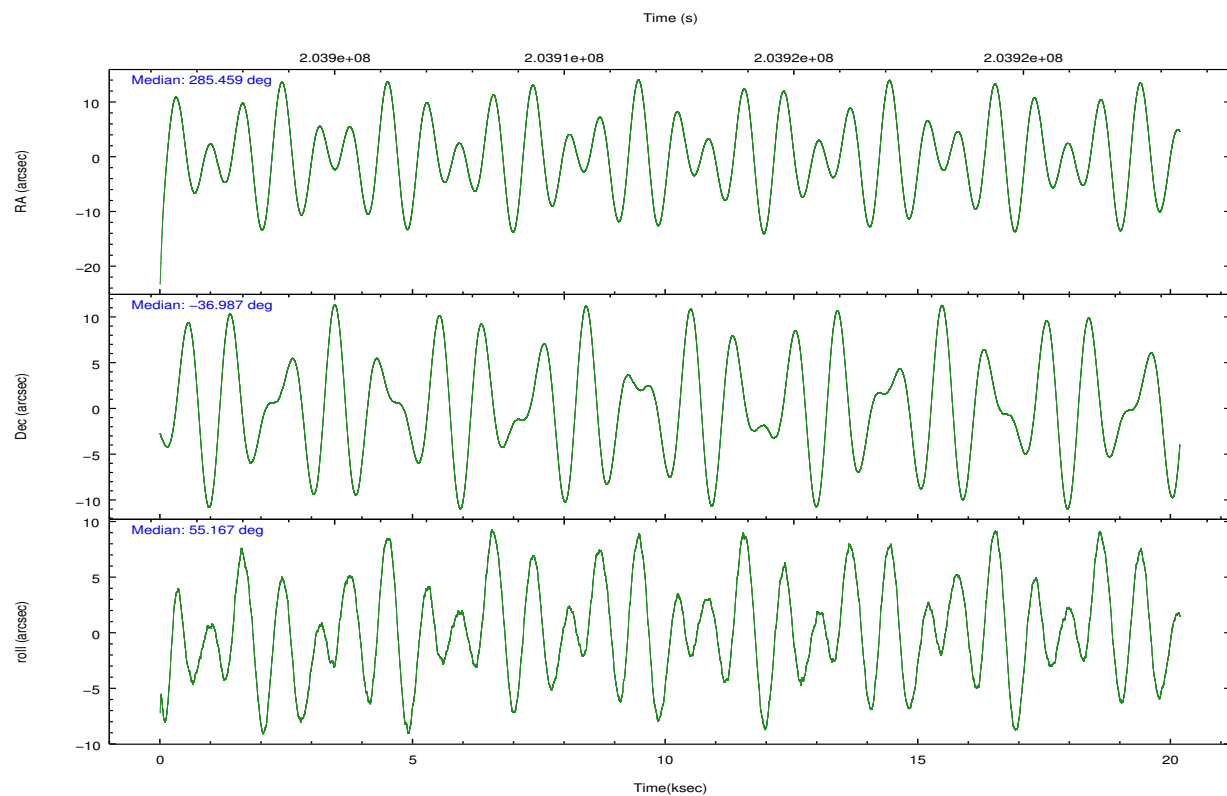
	ccd 0	ccd 1	ccd 2	ccd 3
grade 0 events	6474	6674	9647	9191
	5%	5%	7%	7%
grade 1 events	73	71	146	208
	0%	0%	0%	0%
grade 2 events	2834	2776	3276	2917
	2%	2%	2%	2%
grade 3 events	1416	1548	1459	1405
	1%	1%	1%	1%
grade 4 events	1343	1426	1449	1416
	1%	1%	1%	1%
grade 5 events	3618	3902	3488	4284
	3%	3%	2%	3%
grade 6 events	2198	2505	2167	2178
	1%	2%	1%	1%
grade 7 events	94120	94160	112344	105442
	83%	83%	83%	82%

2.2 Compared Parameters

Parameter	Planned	Actual	Parameter	Planned	Actual
Instrument	ACIS	ACIS	Obspar format version number	7	7
Detector	ACIS-0123	ACIS-0123	Obspar file type	PREDICTED	ACTUAL
Grating	NONE	NONE	Obspar update status	NONE	UPDATED
Data mode	VFAINT	VFAINT	Number of optional ACIS chips dropped	0	0
Observation mode	POINTING	POINTING	On-chip summing requested	N	N
[deg] Pointing RA	285.456247	285.4590033403433	Subarray requested	NONE	NONE
[deg] Pointing Dec	-37.014445	-36.9871607355521	Alternating exposures requested	N	N
[deg] Pointing Roll	54.965515	55.17587037789087	[s] Primary exposure time	0.000000	3.1
[mm] SIM focus pos	-0.782348	-0.7809083437167272			
[mm] SIM defocus	0	0.001439871863259334			
[mm] SIM translation stage pos	-233.592463	-233.5874344608287			
[mm] SIM translation stage offset	0	-0.005018542100998502			
[s] Observation start time (MET)	203902398.184000	203901419.96408			
Observation start date	2004-06-17T23:32:14	2004-06-17T23:16:59			
[s] Observation end time (MET)	203922398.184000	203923449.77755			
Observation end date	2004-06-18T05:05:34	2004-06-18T05:24:09			
Read mode	TIMED	TIMED			

2.3 Aspect



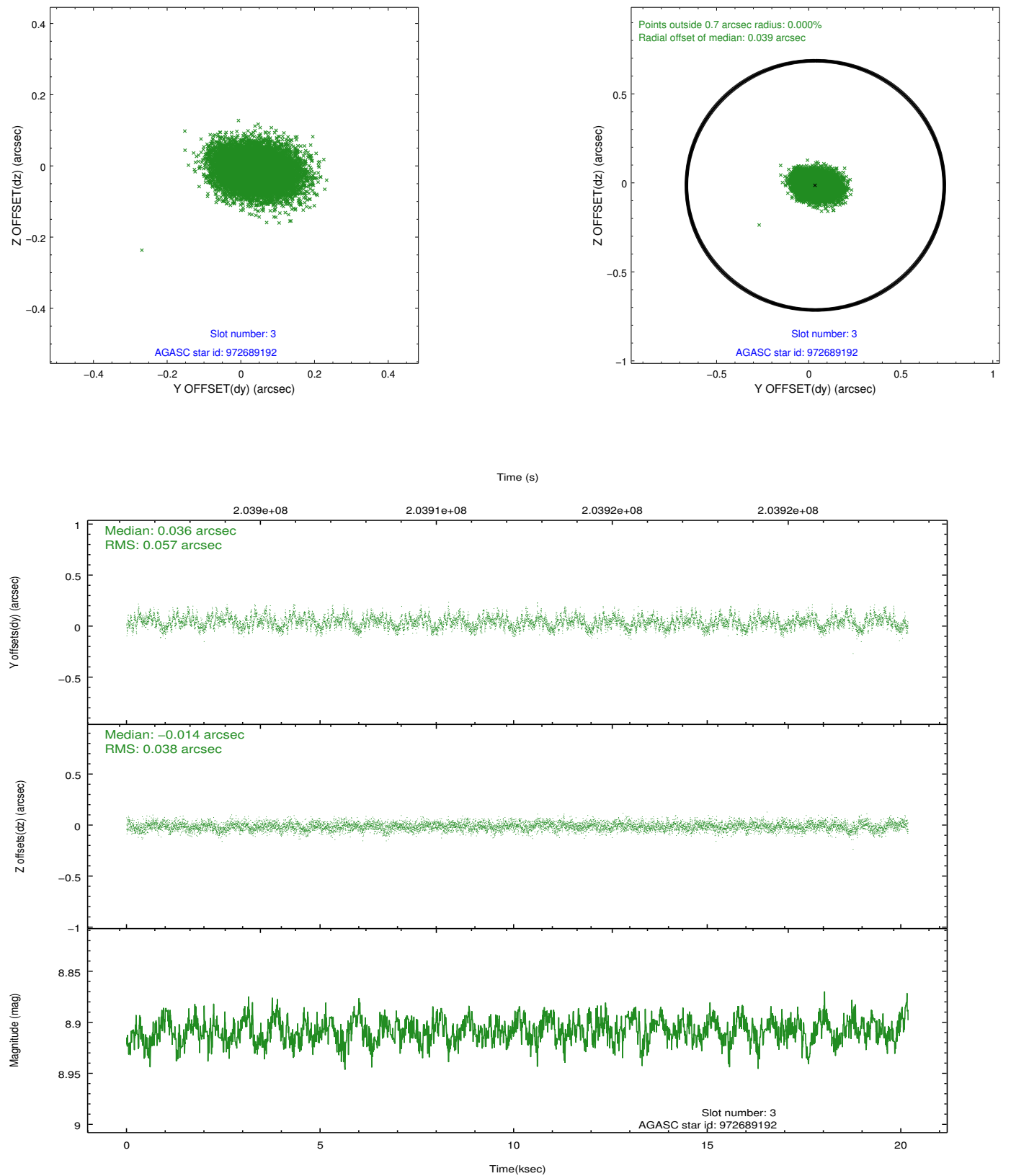


Slot Statistics

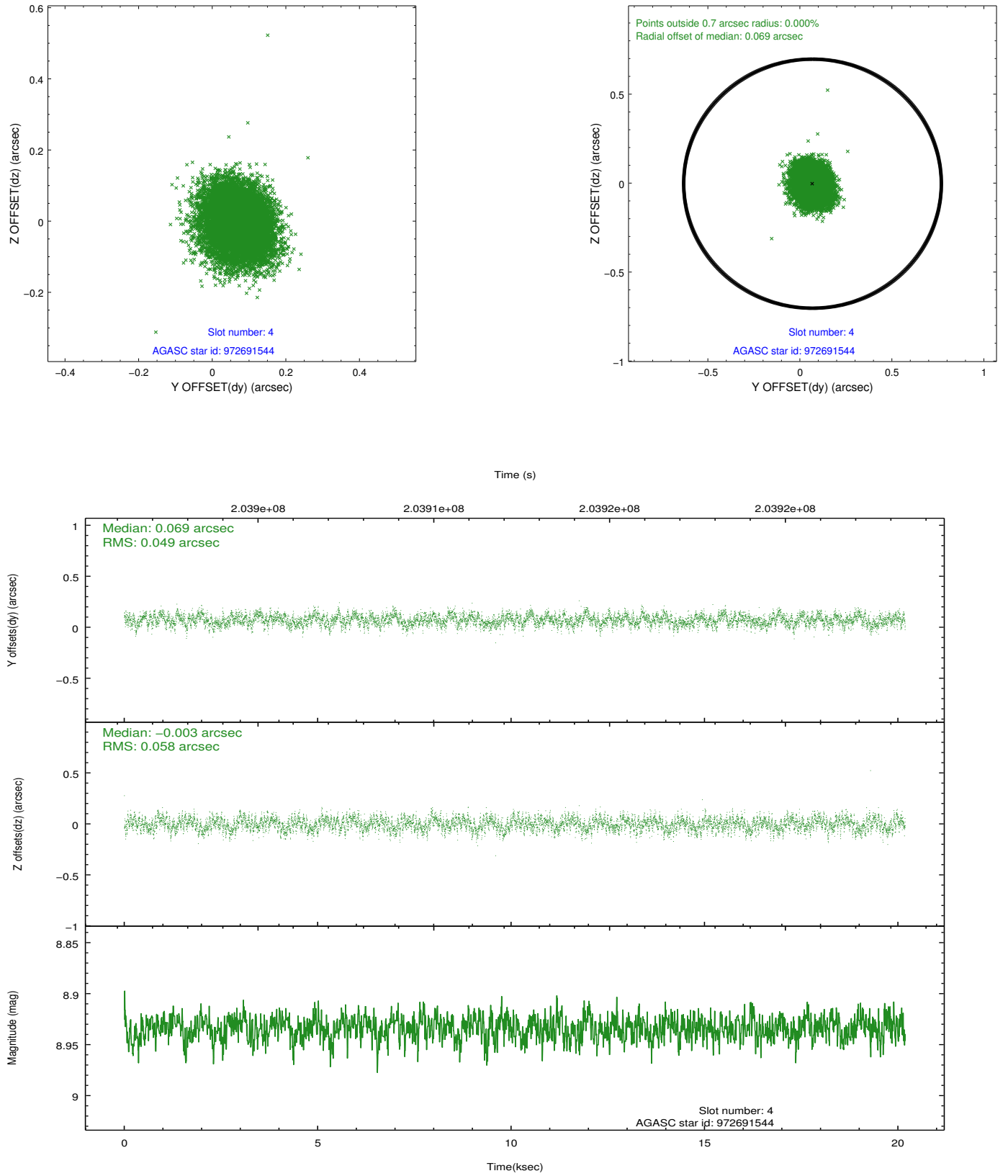
slot	status	id	mag	n_pts	med_dy	med_dz	dr1	dr2	ra	dec	mean_y	mean_z
0	FID	ACIS-I-1	7.24	4923	-0.006	0.039	0.016	0.036	0.000000	0.000000	933.05	-833.25
1	FID	ACIS-I-5	7.24	4922	-0.146	0.023	0.007	0.013	0.000000	0.000000	-1815.10	1064.13
2	FID	ACIS-I-6	7.25	4922	0.059	0.009	0.014	0.024	0.000000	0.000000	398.46	1708.83
3	GUIDE	972689192	8.91	9844	0.036	-0.014	0.072	0.120	284.589186	-37.133486	-1788.71	1784.94
4	GUIDE	972691544	8.93	9841	0.069	-0.003	0.081	0.129	284.930895	-36.788005	-205.67	1705.98
5	GUIDE	972693120	7.63	9846	-0.069	-0.155	0.052	0.083	285.412210	-36.890704	292.09	359.72
6	GUIDE	972698608	9.27	9843	-0.002	-0.032	0.078	0.130	285.647031	-36.601212	1534.43	402.58
7	GUIDE	972816680	9.15	9837	-0.034	0.205	0.068	0.114	286.054324	-36.904693	1308.05	-1185.44

2.4 Star Slots

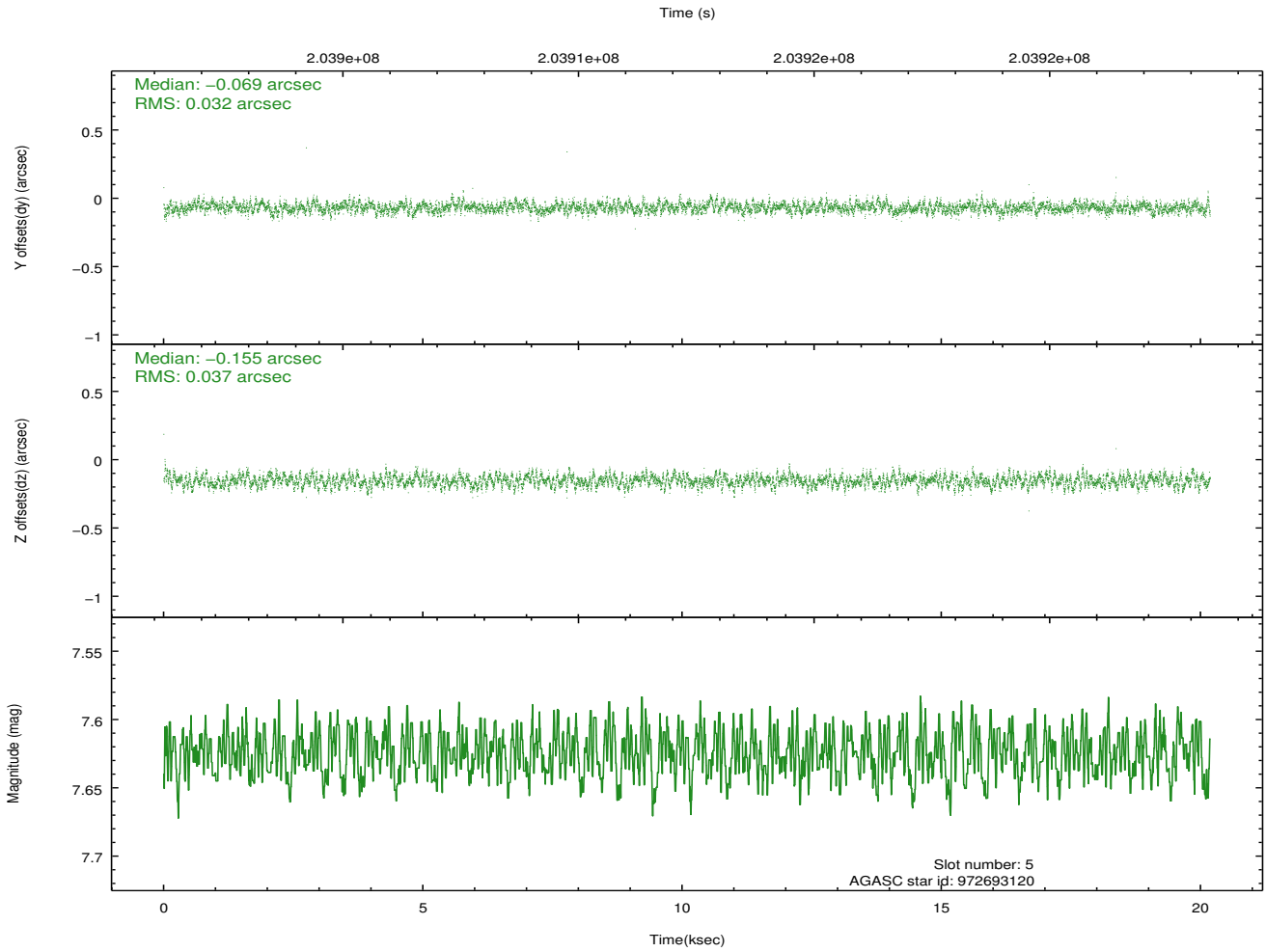
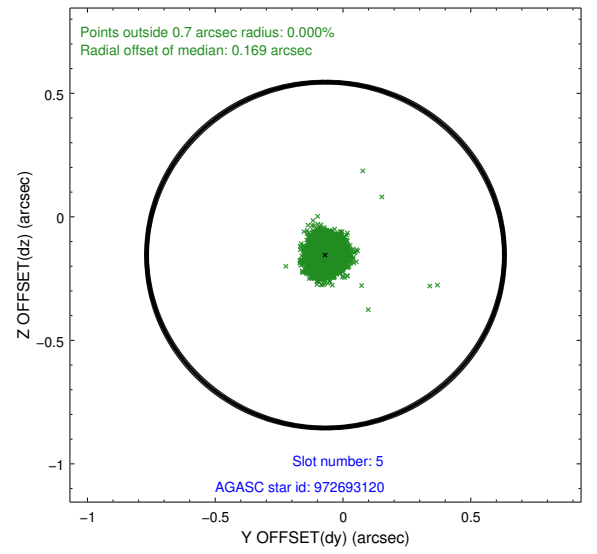
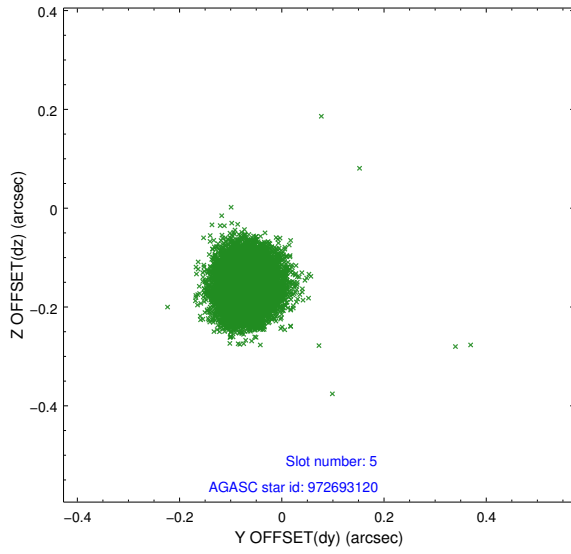
2.4.1 Slot 3



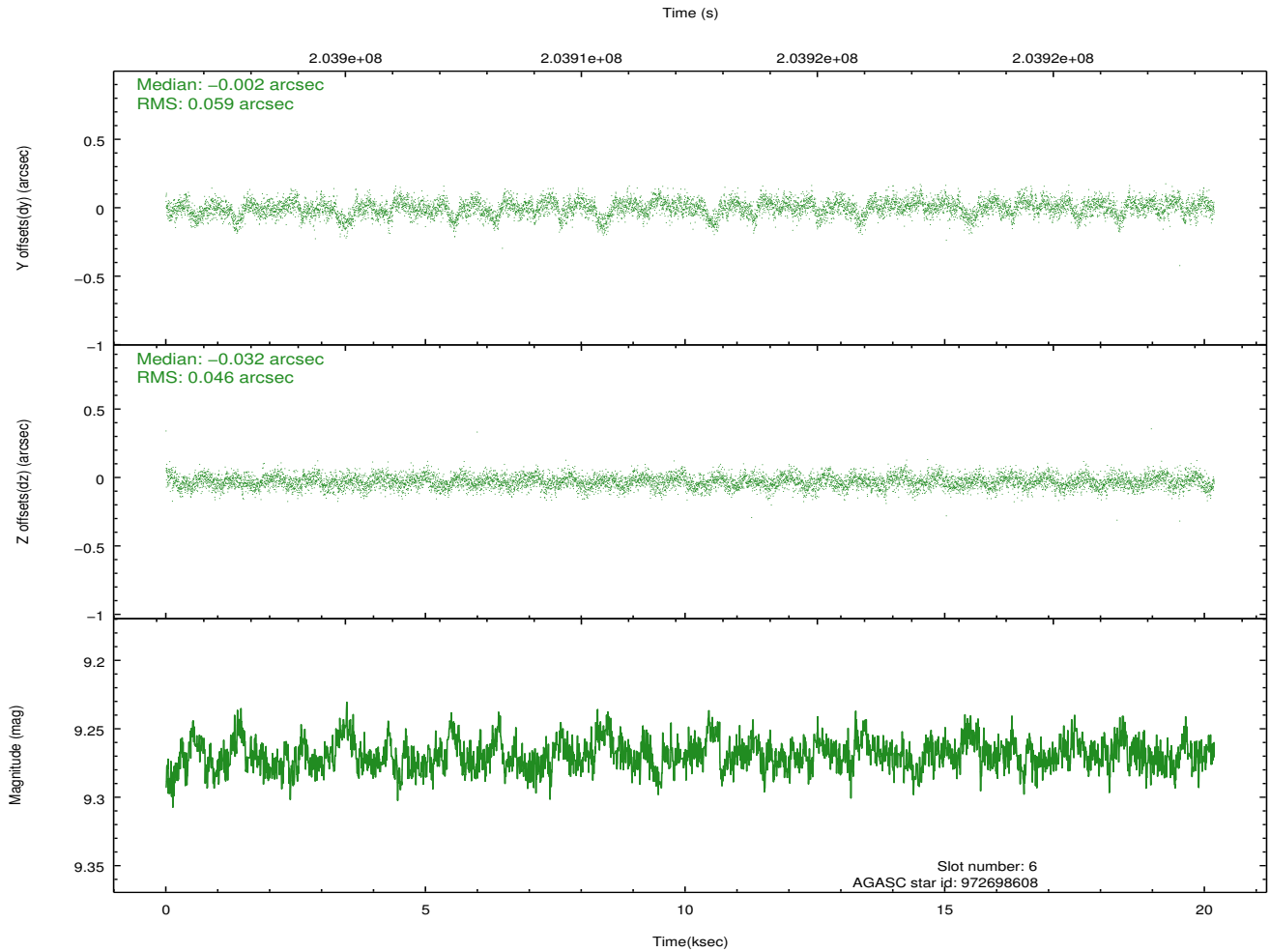
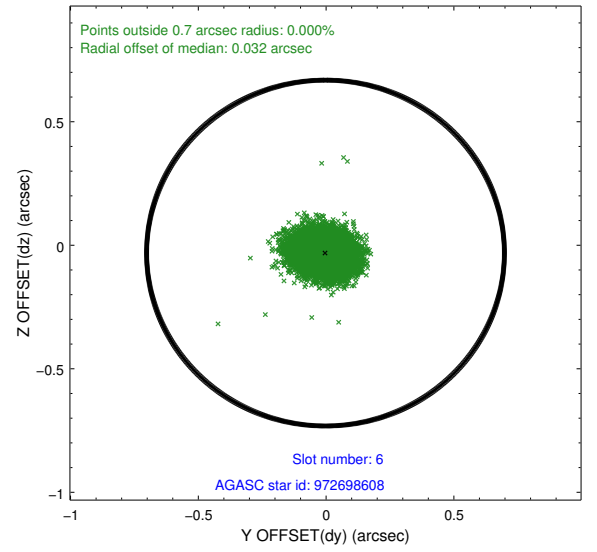
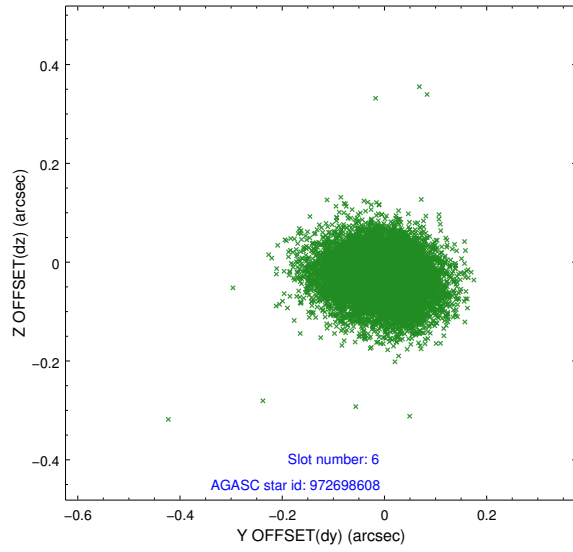
2.4.2 Slot 4



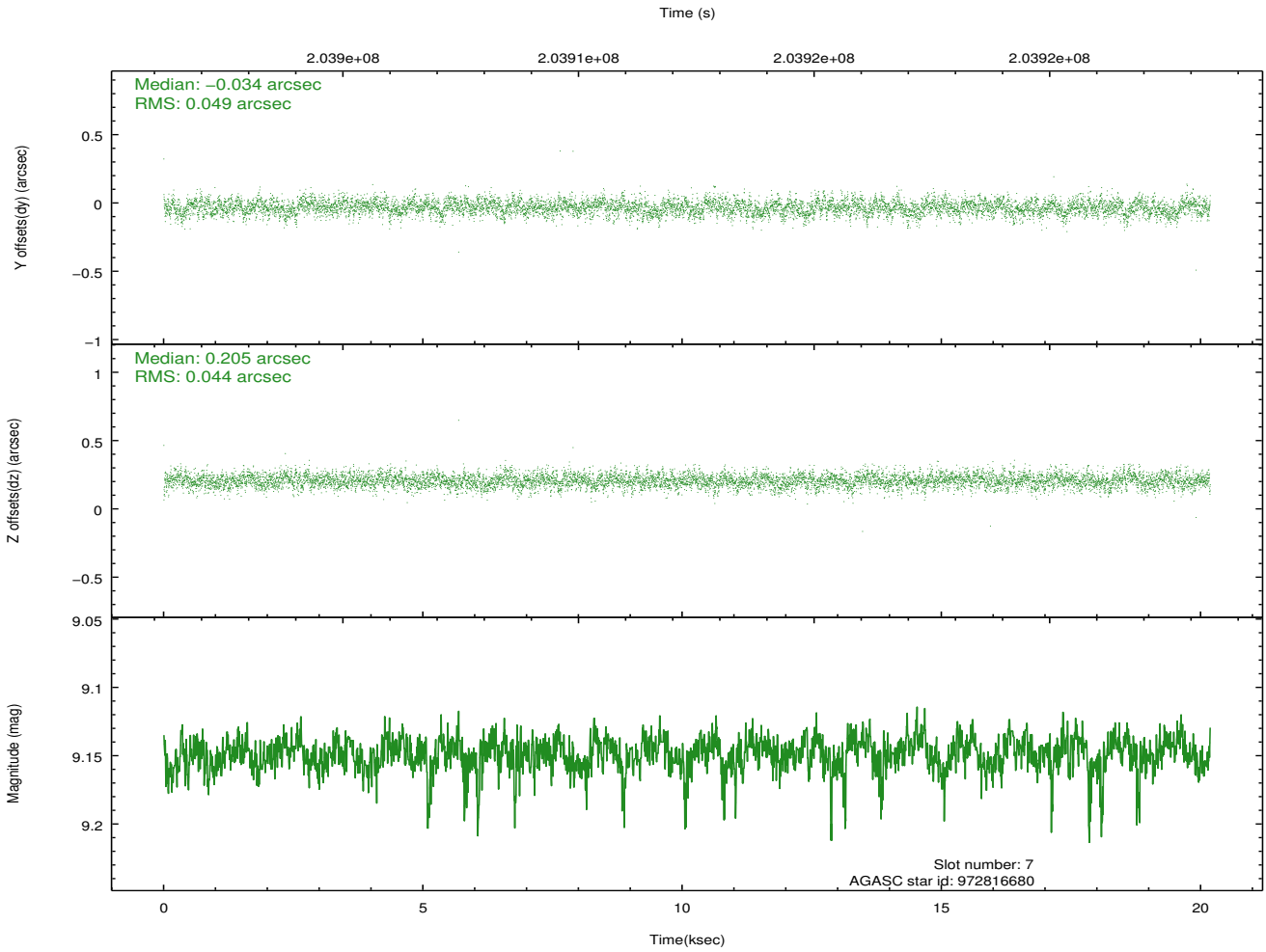
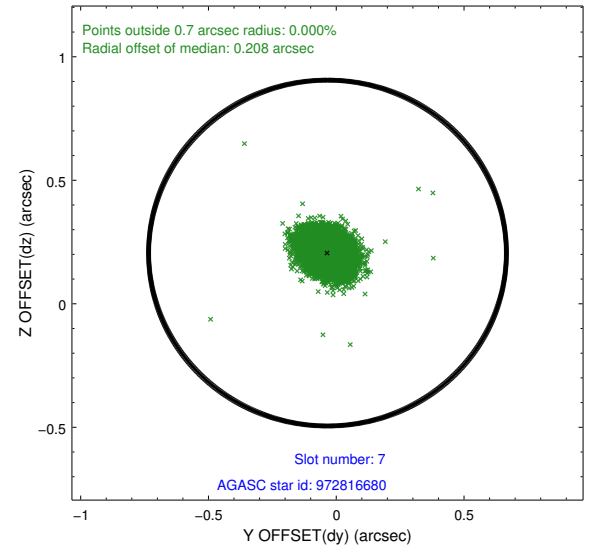
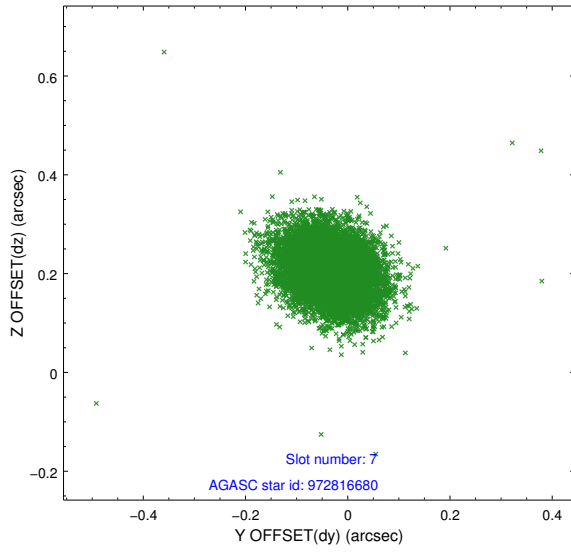
2.4.3 Slot 5



2.4.4 Slot 6

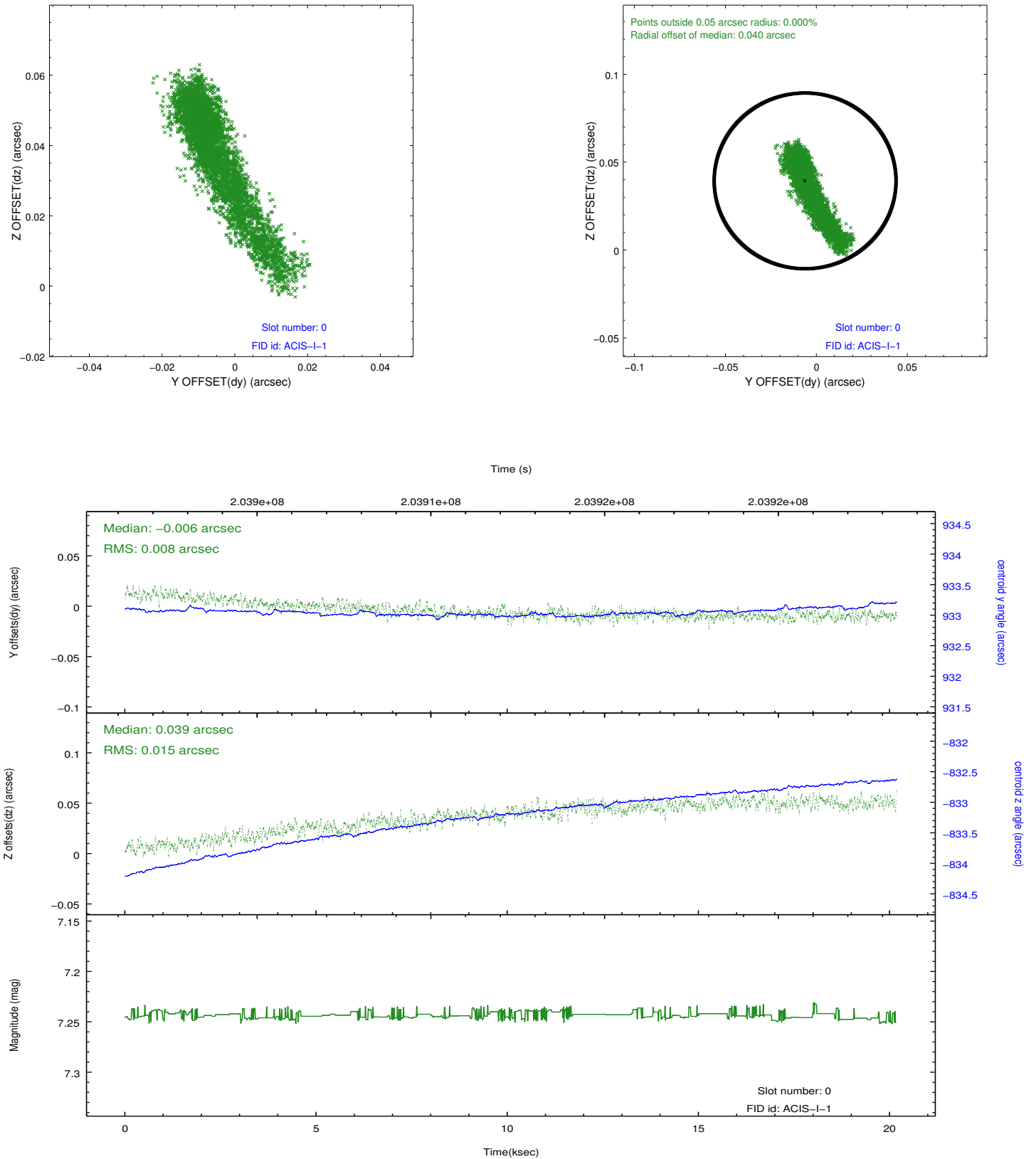


2.4.5 Slot 7

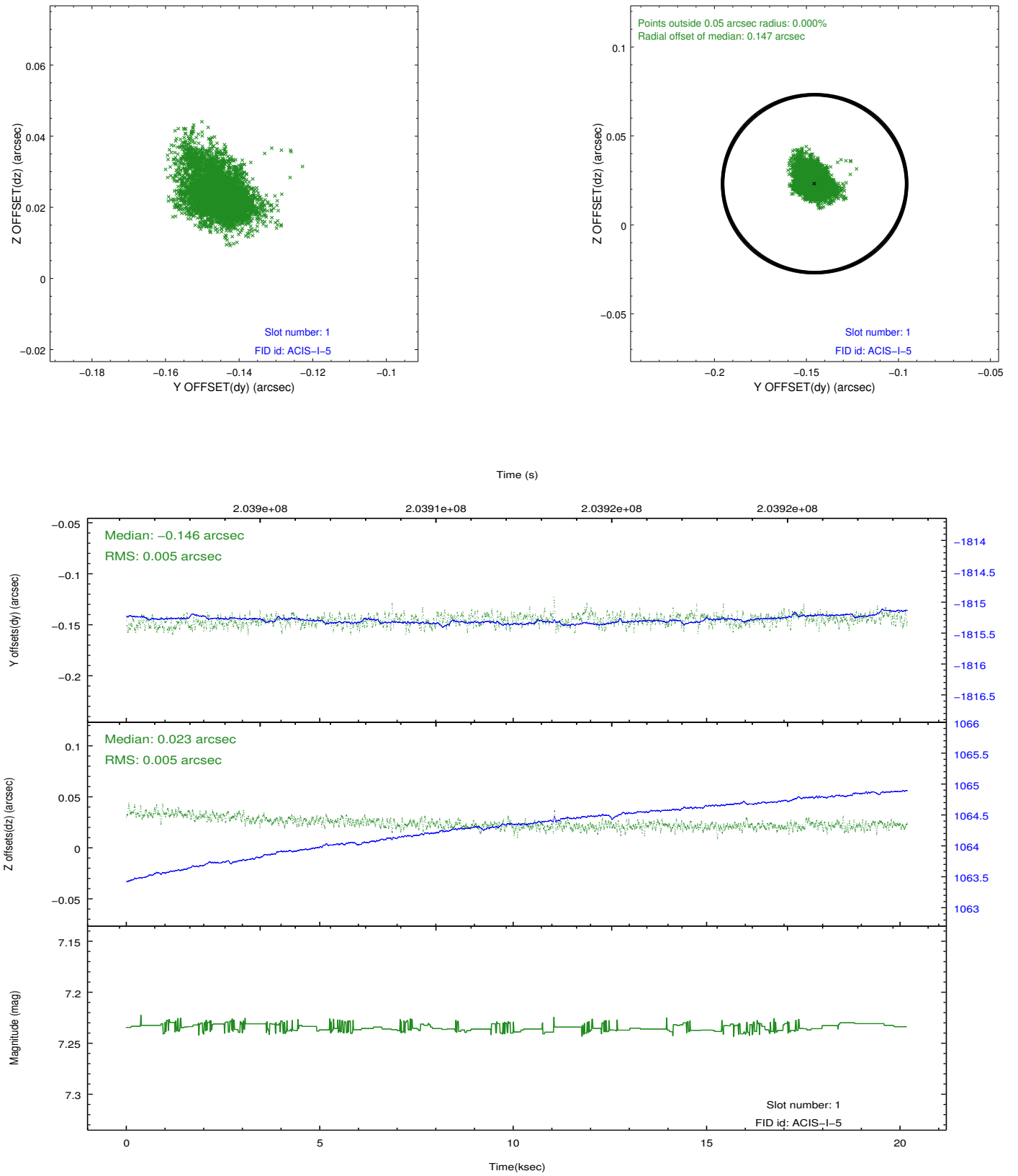


2.5 FID Slots

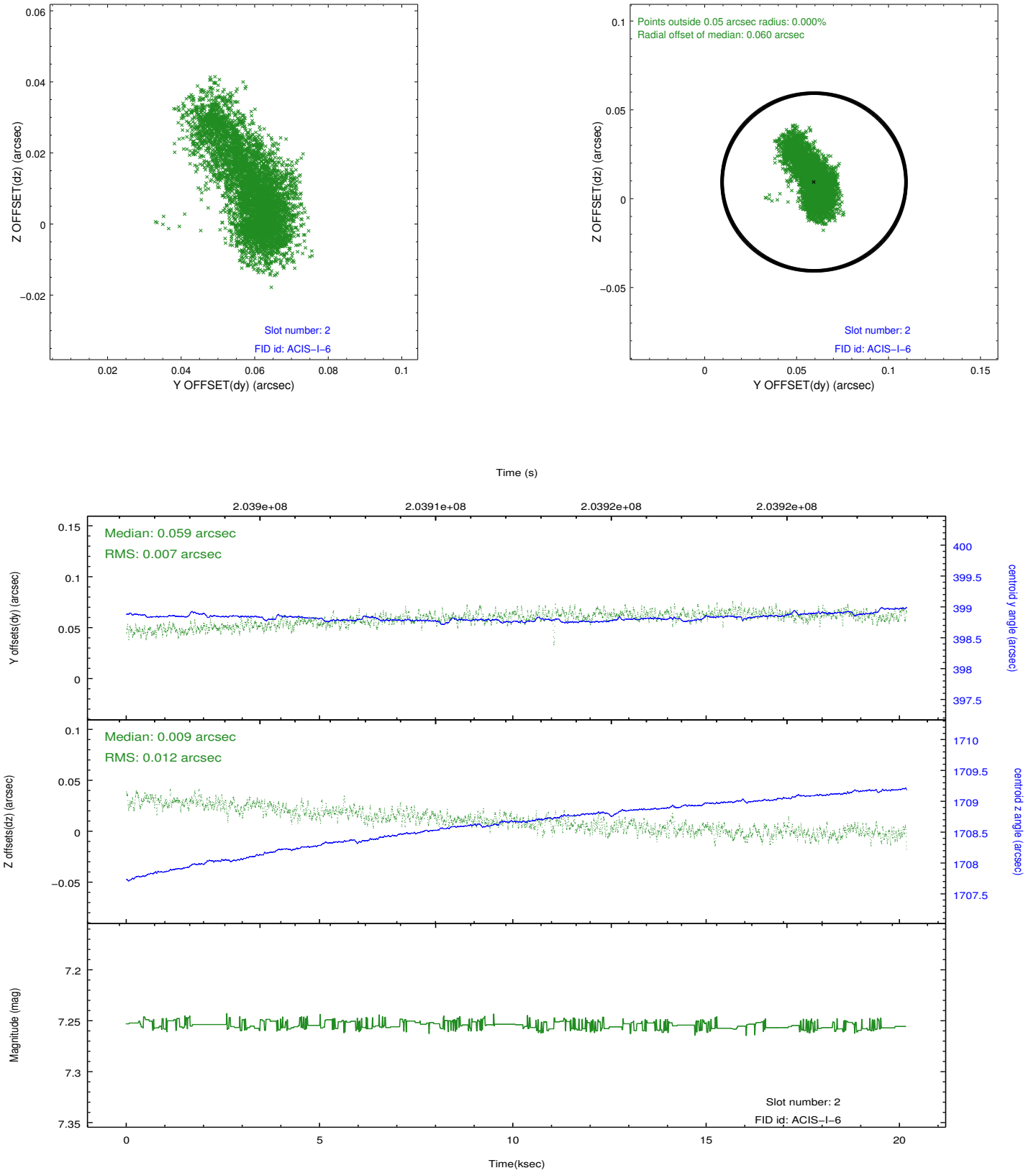
2.5.1 Slot 0



2.5.2 Slot 1



2.5.3 Slot 2



A Summary

A.1 Status

V&V Scientist	Jen Lauer
V&V Date (YYYY-MM-DD)	2012.12.18
V&V Edition	1
V&V Disposition and Status	OK
V&V Charge Time	20.171

A.2 Comments