

V&V Reference Report

L2 ASCDS Version : 8.4.5

Observation 5321 - L2 Version 3
Chandra X-Ray Center

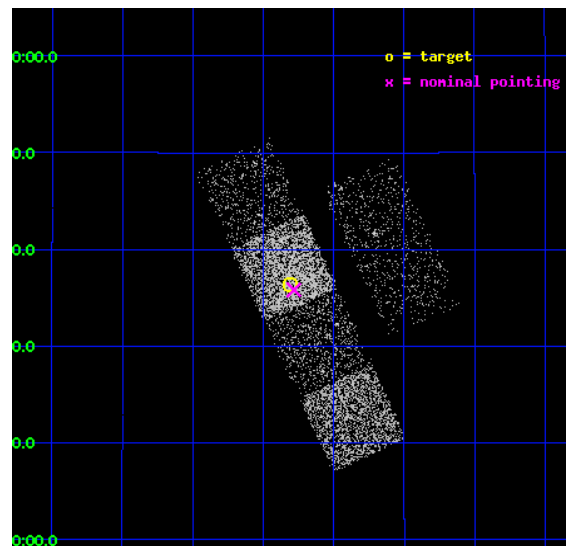
L2 Processing Date : Dec 1 2012

Contents

1	Front	2
2	OBI	3
2.1	OBI	3
2.1.1	Images	3
2.1.2	Bias	3
2.1.3	Parameters	4
2.1.4	Events	4
2.2	Compared Parameters	5
2.3	Aspect	6
2.4	Star Slots	9
2.4.1	Slot 3	9
2.4.2	Slot 4	10
2.4.3	Slot 5	11
2.4.4	Slot 6	12
2.4.5	Slot 7	13
2.5	FID Slots	14
2.5.1	Slot 0	14
2.5.2	Slot 1	15
2.5.3	Slot 2	16
A	Summary	17
A.1	Status	17
A.2	Comments	17

1 Front

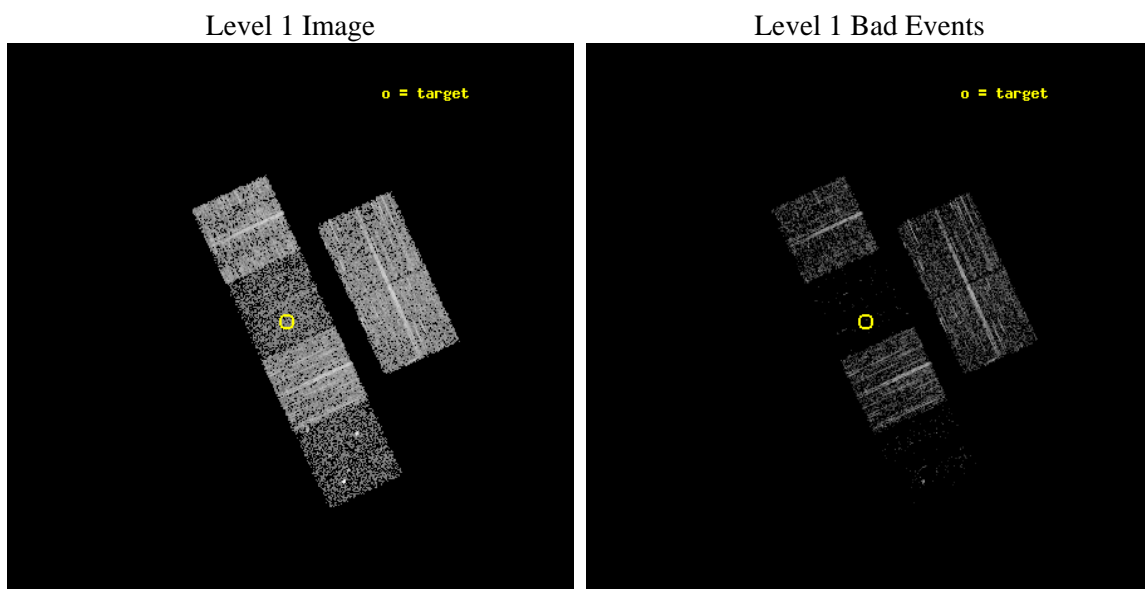
seq_num	100053	Sequence number
obs_id	5321	Observation id
title	Chandra Snapshot Spectral Imaging of Comets C/2001 Q4 (NEAT) and C/2002 T7 (LINEAR)	Proposal title
observer	Dr. Carey Lisse	Principal investigator
object	C/2001 Q4 (NEAT)	Source name
dtcycle	0	
cycle	P	events from which exps? Prim/Second/Both
ra_targ	124.32631	Observer's specified target RA [deg]
dec_targ	10.605365	Observer's specified target Dec [deg]
ra_nom	124.32060952757	Nominal RA [deg]
dec_nom	10.597246329204	Nominal Dec [deg]
roll_nom	245.15760269153	Nominal Roll [deg]
revision	3	Processing version of data
ontime	3558.3999867439	Sum of GTIs [s]
livetime	3513.3413835005	Livetime [s]
ontime2	3558.3999867439	Sum of GTIs [s]
ontime3	3558.3999867439	Sum of GTIs [s]
ontime5	3558.3999867439	Sum of GTIs [s]
ontime6	3558.3999867439	Sum of GTIs [s]
ontime7	3558.3999867439	Sum of GTIs [s]
ontime8	3558.3999867439	Sum of GTIs [s]
l2events	9088	Number of level 2 events



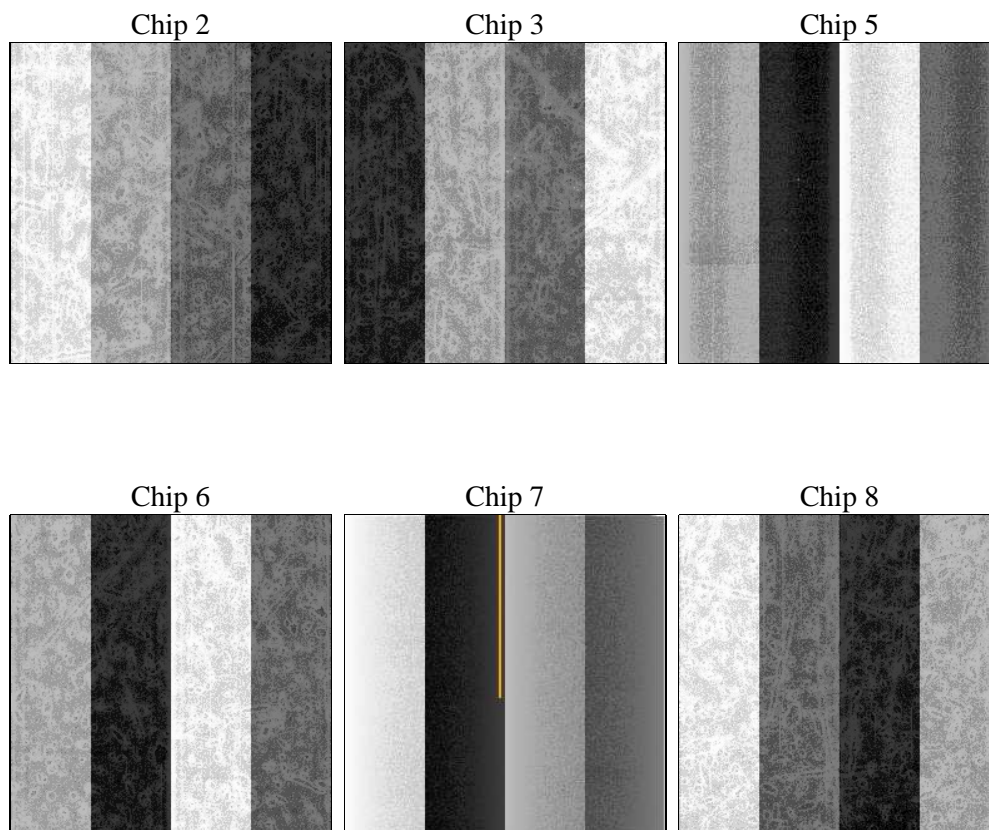
2 OBI

2.1 OBI

2.1.1 Images



2.1.2 Bias



2.1.3 Parameters

obi_num	0	Obi number	sched_exp_time	3400.000000	[s] Scheduled observation exposure time
ascdsver	8.4.5	Processing system revision	ontime	3558.3999867439	Sum of GTIs [s]
caldsver	4.5.2	 	ontime2	3558.3999867439	Sum of GTIs [s]
date	2012-12-01T07:16:22	Date and time of file creation	ontime3	3558.3999867439	Sum of GTIs [s]
revision	3	Processing version of data	ontime5	3558.3999867439	Sum of GTIs [s]
			ontime6	3558.3999867439	Sum of GTIs [s]
			ontime7	3558.3999867439	Sum of GTIs [s]
			ontime8	3558.3999867439	Sum of GTIs [s]
			l1events	71835	Number of level 1 events

2.1.4 Events

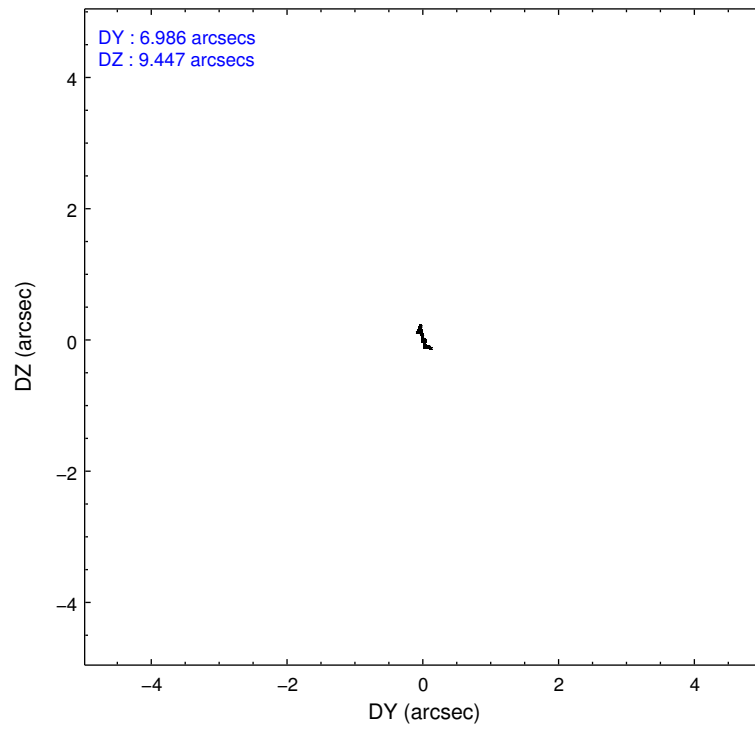
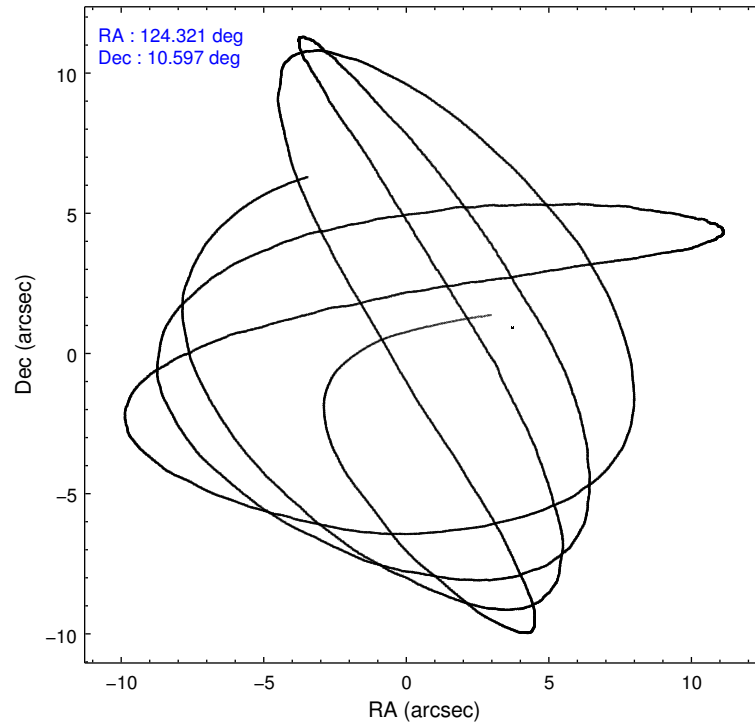
	ccd 2	ccd 3	ccd 5	ccd 6	ccd 7	ccd 8
level 1 events	15914	14174	4782	15567	4960	16438
rejected events	15226	13593	928	14431	606	12534
rejected %	95%	95%	19%	92%	12%	76%

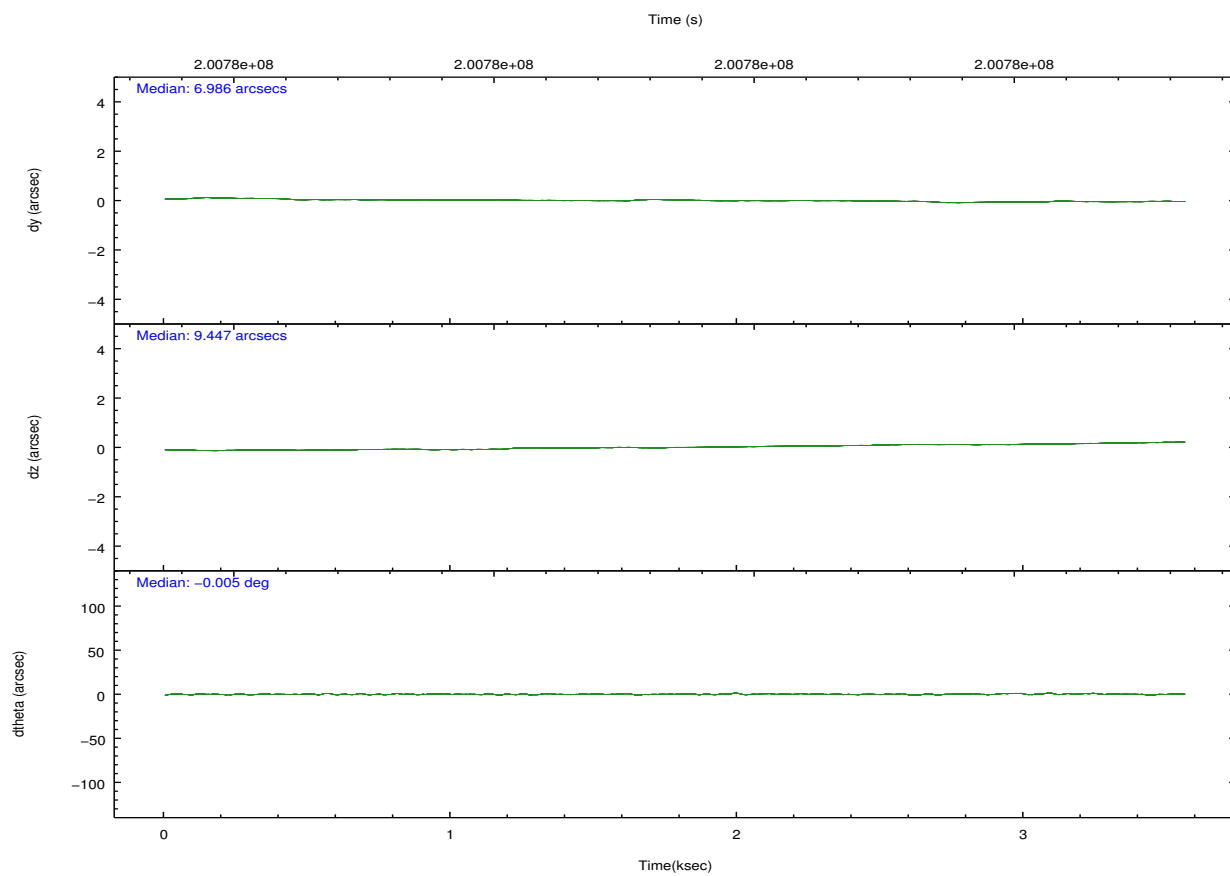
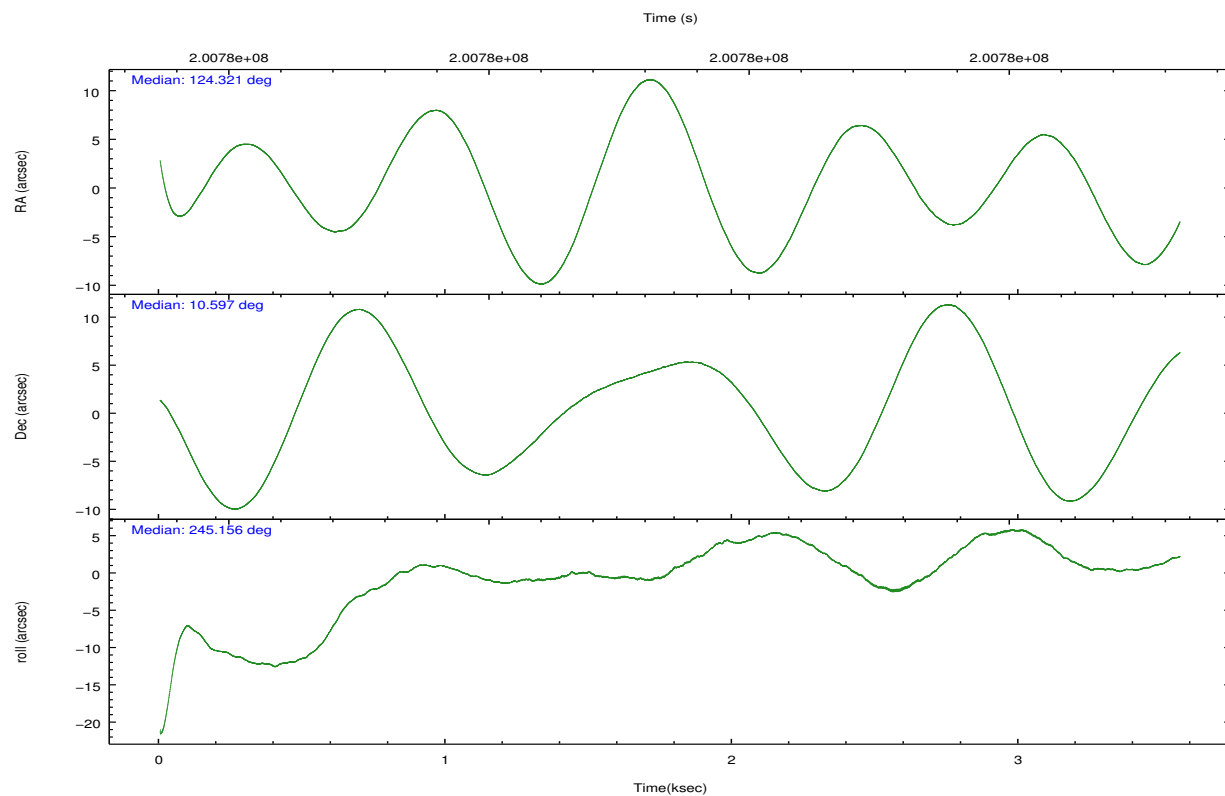
	ccd 2	ccd 3	ccd 5	ccd 6	ccd 7	ccd 8
grade 0 events	321	314	2155	751	2224	1267
	2%	2%	45%	4%	44%	7%
grade 1 events	6	3	89	8	9	14
	0%	0%	1%	0%	0%	0%
grade 2 events	160	76	896	154	1081	884
	1%	0%	18%	0%	21%	5%
grade 3 events	85	71	392	90	465	472
	0%	0%	8%	0%	9%	2%
grade 4 events	88	99	343	118	491	426
	0%	0%	7%	0%	9%	2%
grade 5 events	12	11	143	15	78	79
	0%	0%	2%	0%	1%	0%
grade 6 events	69	42	218	62	330	1057
	0%	0%	4%	0%	6%	6%
grade 7 events	15173	13558	546	14369	282	12239
	95%	95%	11%	92%	5%	74%

2.2 Compared Parameters

Parameter	Planned	Actual	Parameter	Planned	Actual
Instrument	ACIS	ACIS	Obspar format version number	7	7
Detector	ACIS-235678	ACIS-235678	Obspar file type	PREDICTED	ACTUAL
Grating	NONE	NONE	Obspar update status	NONE	UPDATED
Data mode	VFAINT	VFAINT	Number of optional ACIS chips dropped	0	0
Observation mode	POINTING	POINTING	On-chip summing requested	N	N
[deg] Pointing RA	124.317813	124.3206095275672	Subarray requested	NONE	NONE
[deg] Pointing Dec	10.624524	10.59724632920355	Alternating exposures requested	N	N
[deg] Pointing Roll	245.001562	245.1576026915267	[s] Primary exposure time	0.000000	3.2
[s] Window start time (MET)	200361664.184000	200361664.184000			
[s] Window stop time (MET)	201484864.184000	201484864.184000			
[mm] SIM focus pos	-0.684267	-0.6828225247311905			
[mm] SIM defocus	0	0.001444936568705701			
[mm] SIM translation stage pos	-190.132523	-190.1400660498719			
[mm] SIM translation stage offset	0	0.00754346686406393			
[s] Observation start time (MET)	200775078.184000	200774015.16336			
Observation start date	2004-05-12T18:50:14	2004-05-12T18:33:35			
[s] Observation end time (MET)	200778478.184000	200778612.80107			
Observation end date	2004-05-12T19:46:54	2004-05-12T19:50:12			
Read mode	TIMED	TIMED			

2.3 Aspect



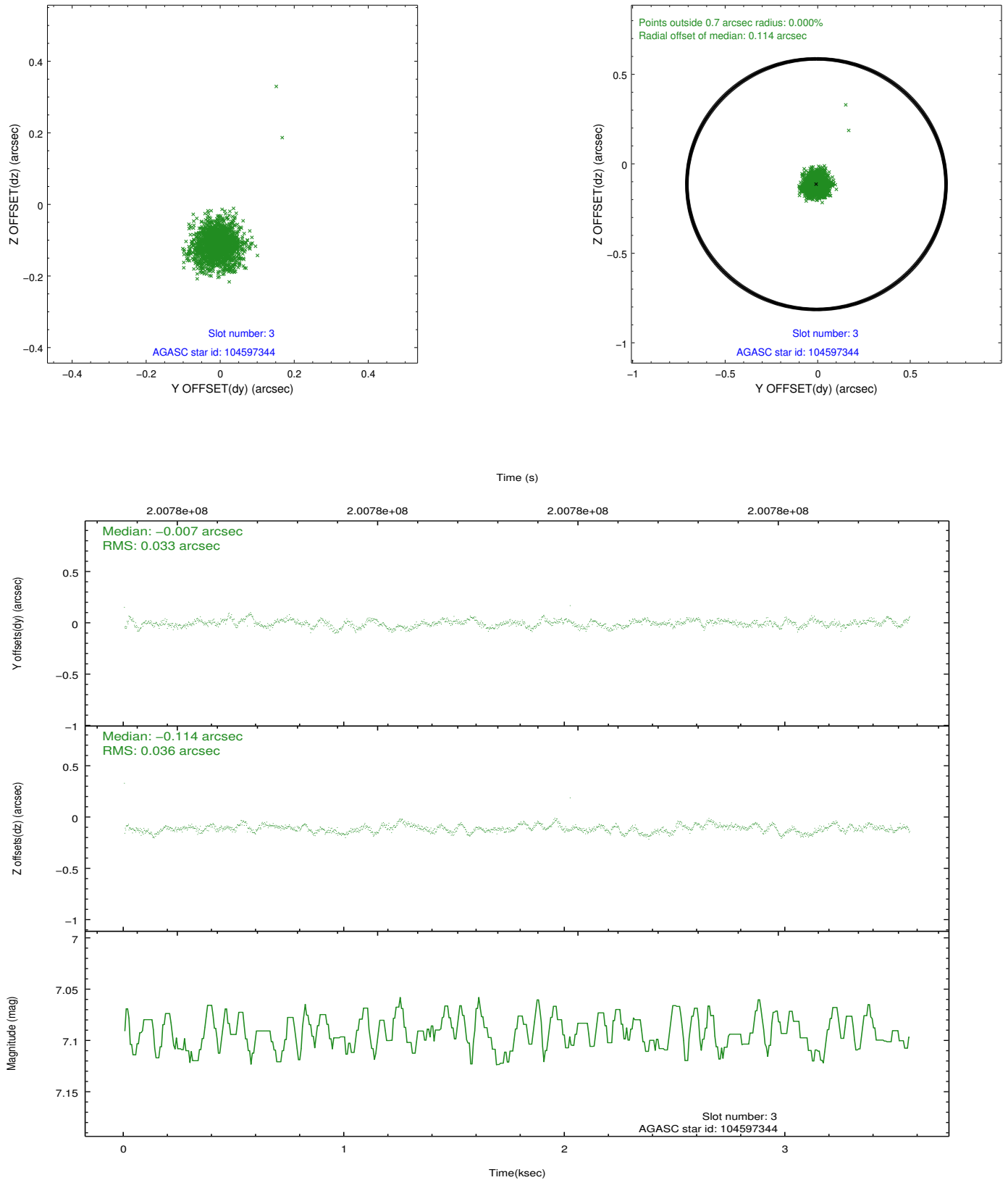


Slot Statistics

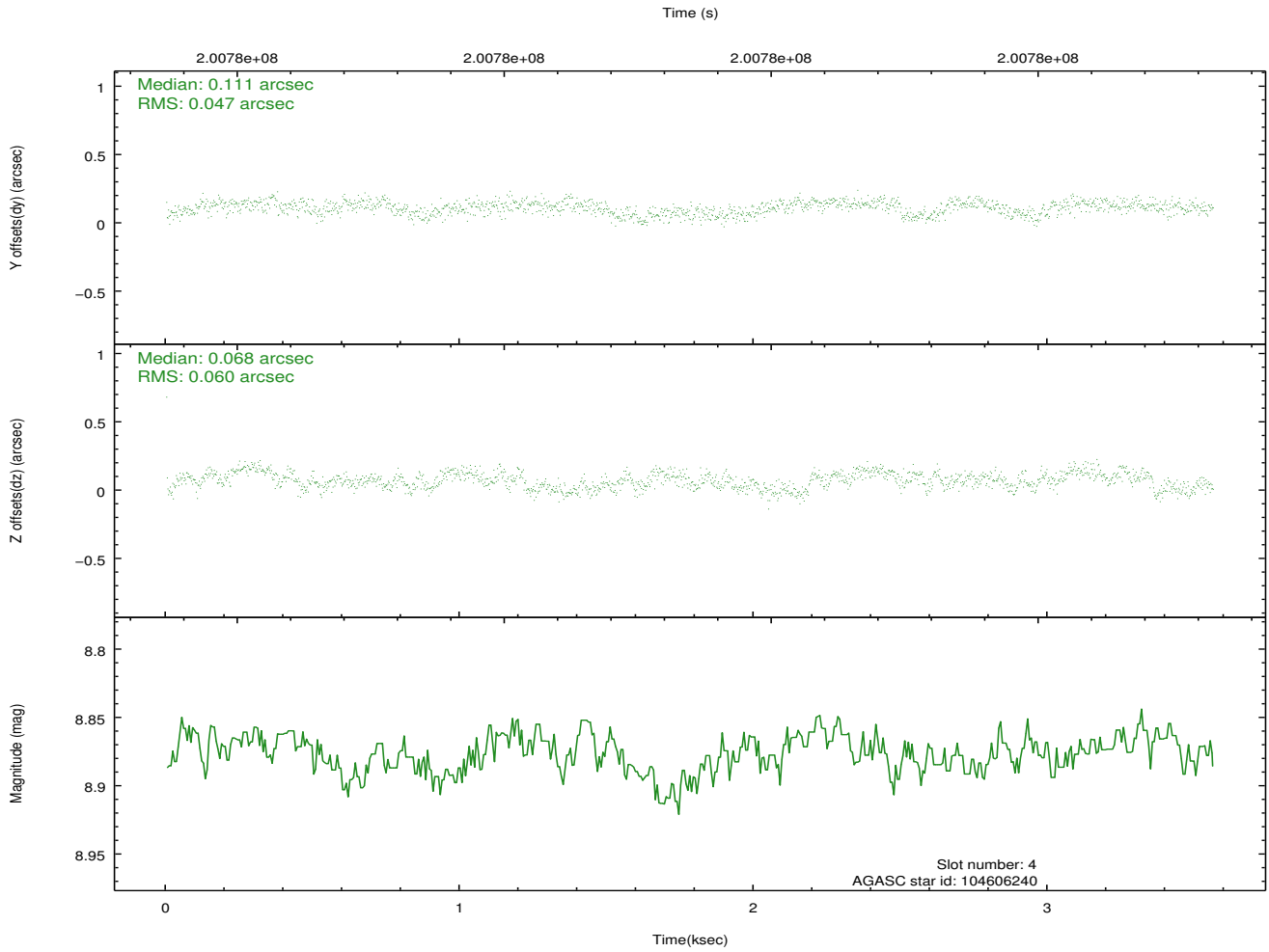
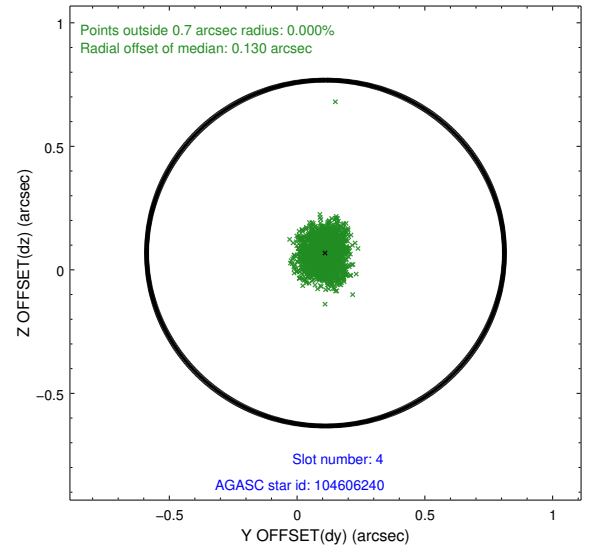
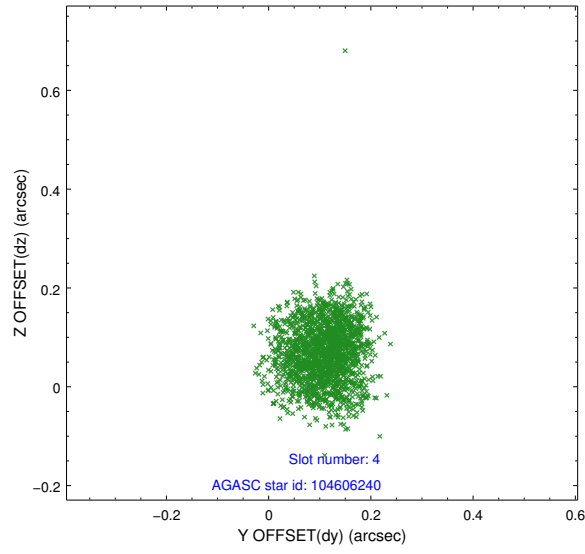
slot	status	id	mag	n_pts	med_dy	med_dz	dr1	dr2	ra	dec	mean_y	mean_z
0	FID	ACIS-S-2	7.10	869	-0.058	-0.032	0.006	0.011	0.000000	0.000000	-759.78	-1730.73
1	FID	ACIS-S-4	7.20	869	0.056	0.031	0.006	0.010	0.000000	0.000000	2152.79	176.01
2	FID	ACIS-S-6	7.35	869	-0.026	0.008	0.007	0.010	0.000000	0.000000	404.49	815.38
3	GUIDE	104597344	7.09	1738	-0.007	-0.114	0.050	0.081	124.136828	11.043606	-1097.67	-1217.09
4	GUIDE	104606240	8.88	1738	0.111	0.068	0.082	0.126	124.221640	10.540343	417.68	-180.78
5	GUIDE	104728024	9.70	1734	-0.022	0.026	0.110	0.184	124.793410	10.914039	-1656.48	1082.87
6	GUIDE	104729968	9.26	1735	0.081	0.070	0.090	0.145	124.567030	10.276646	760.35	1330.19
7	GUIDE	105125392	7.58	1737	-0.163	-0.047	0.054	0.090	124.280650	11.351214	-2315.70	-1223.54

2.4 Star Slots

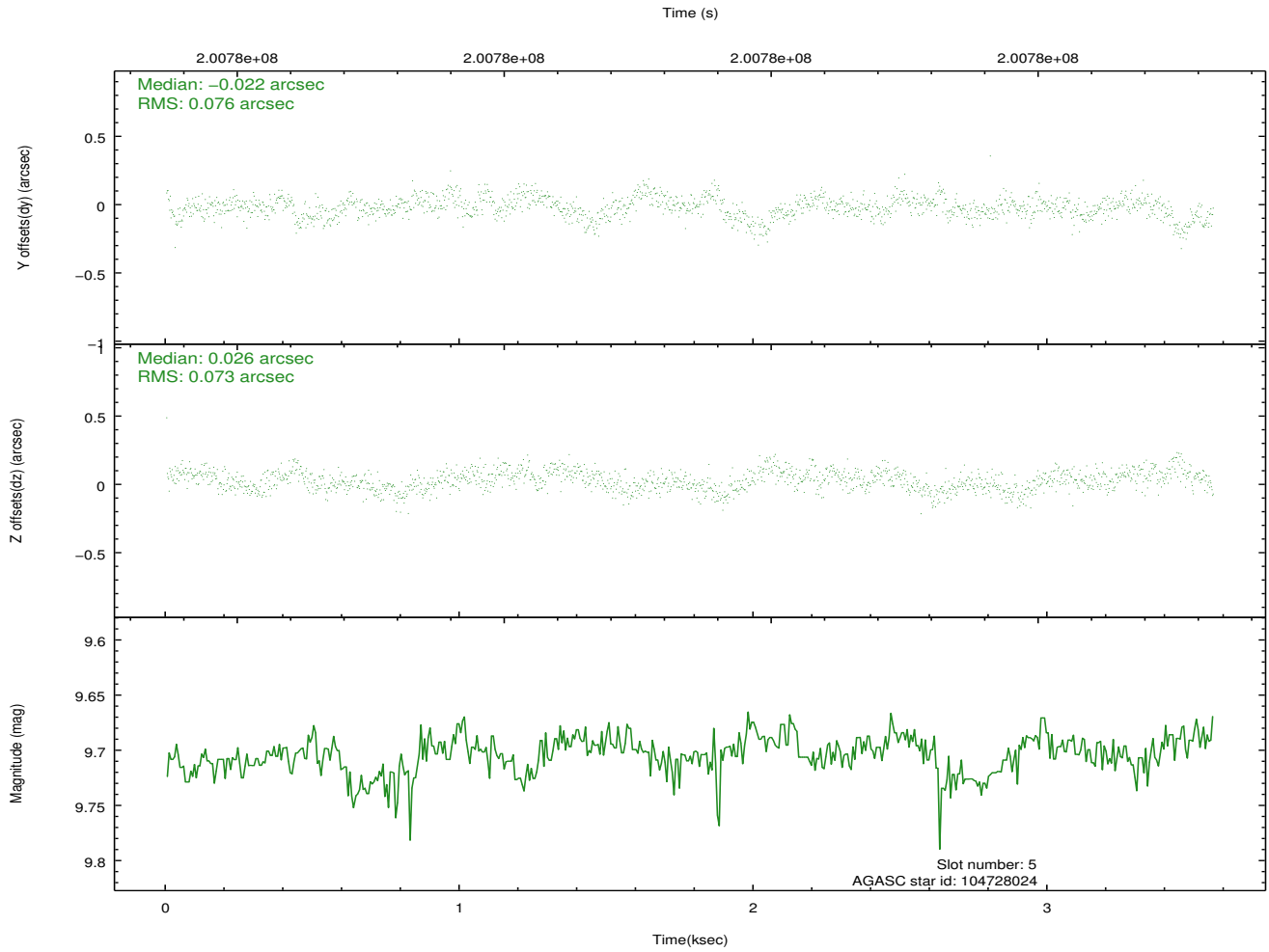
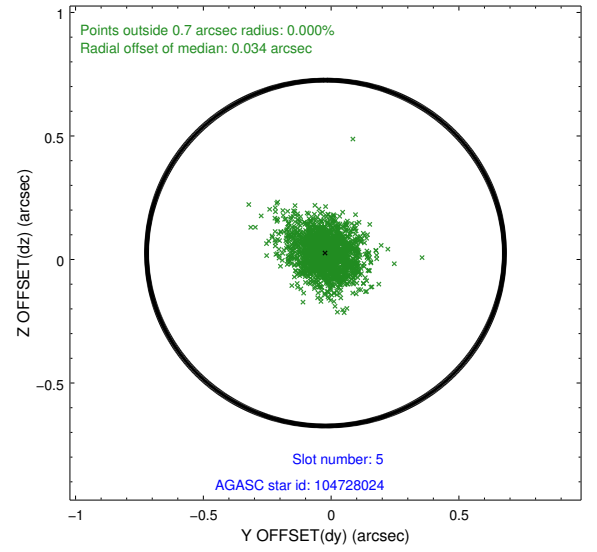
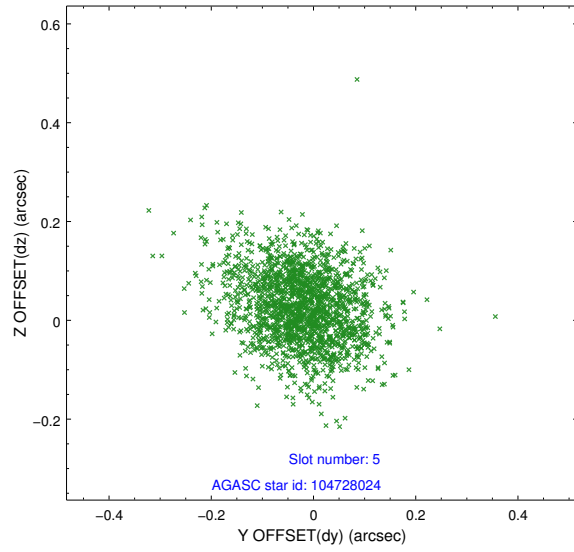
2.4.1 Slot 3



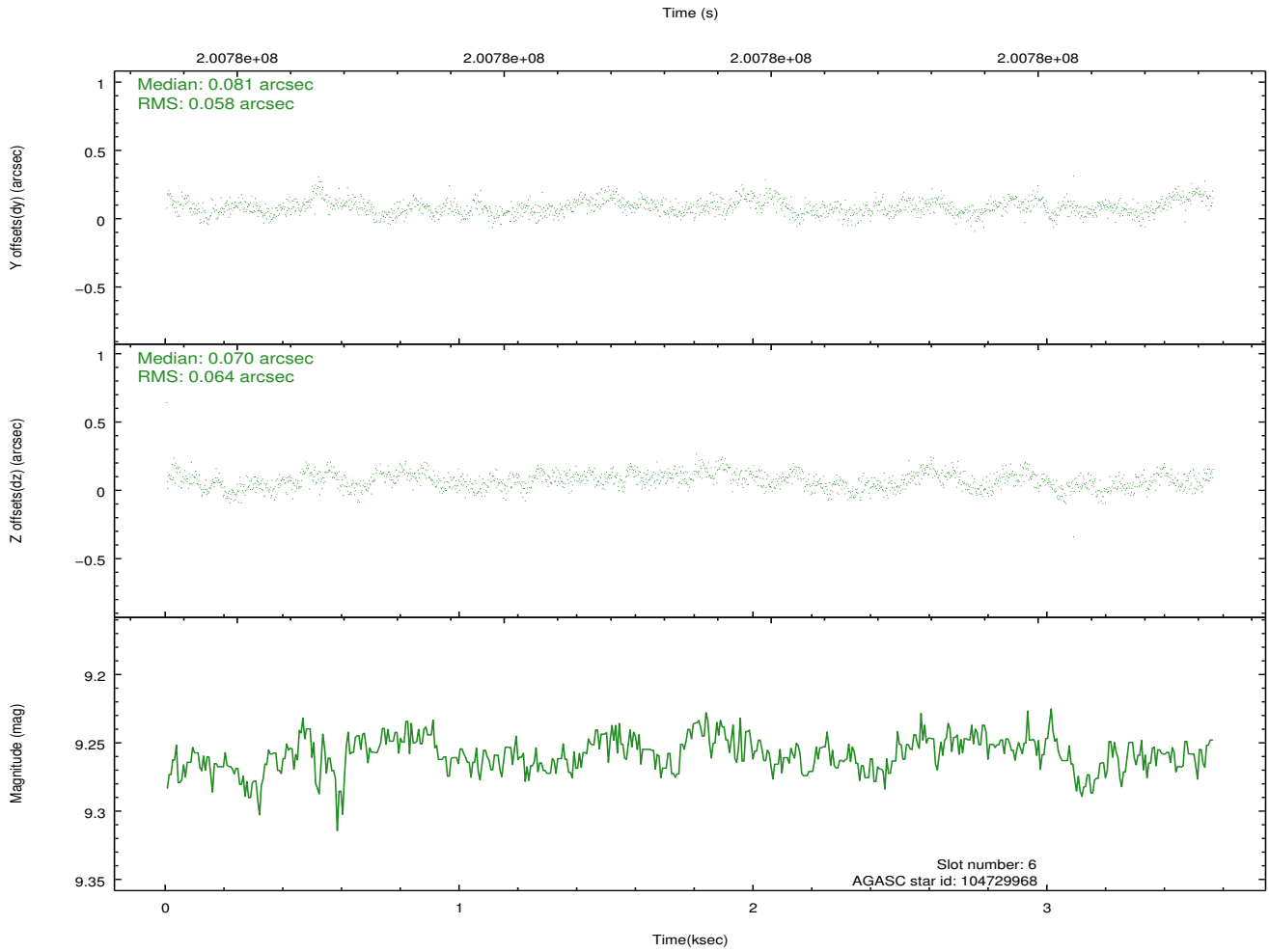
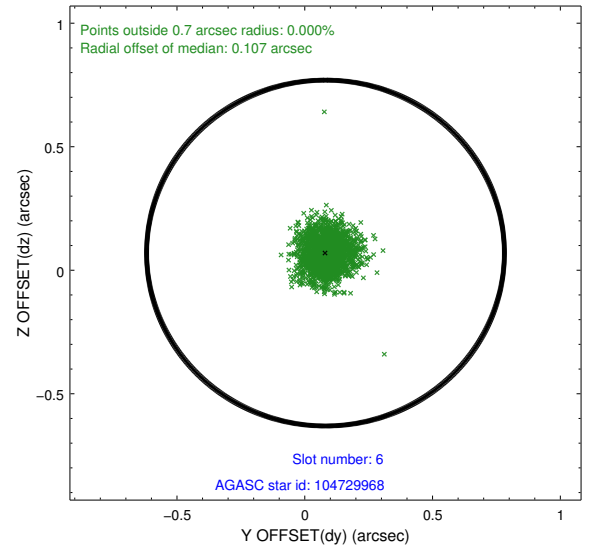
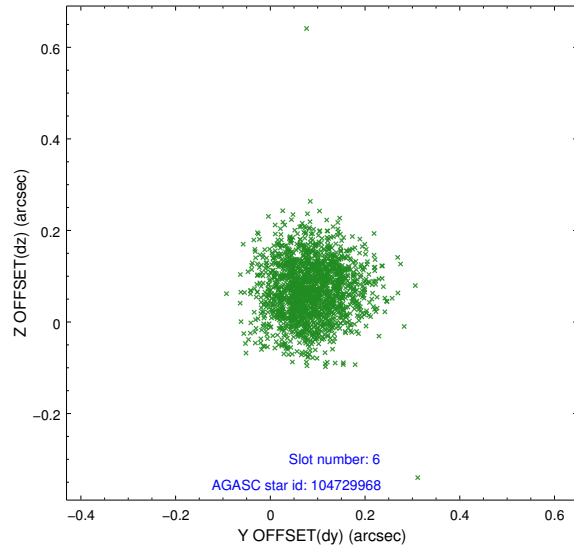
2.4.2 Slot 4



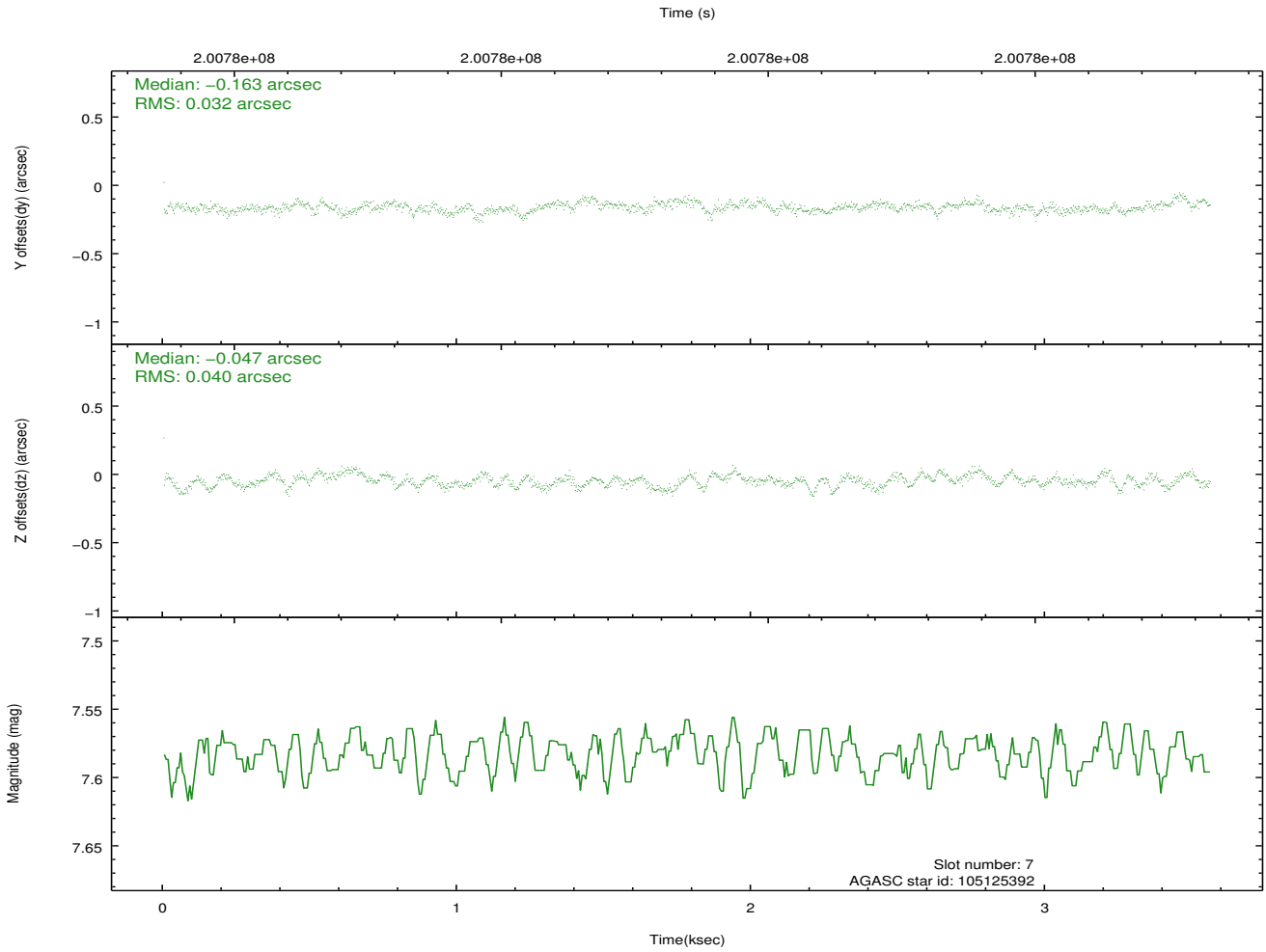
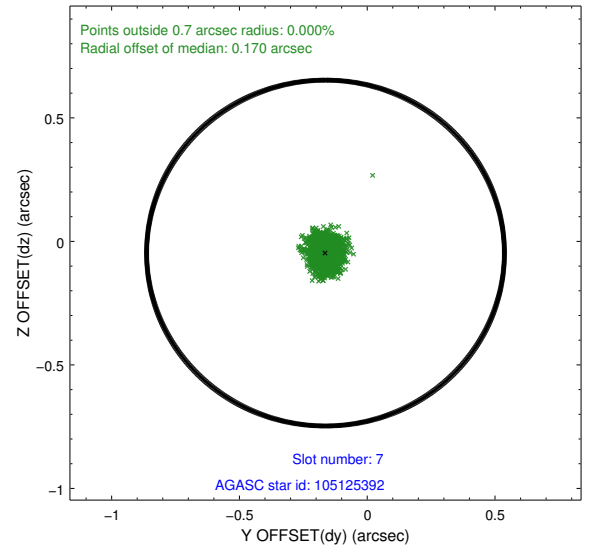
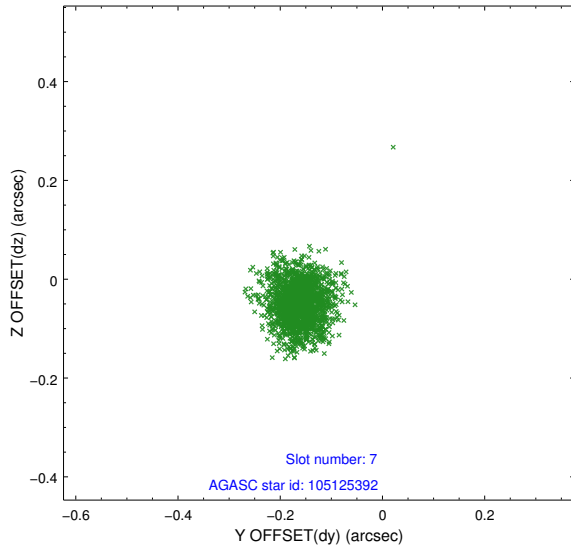
2.4.3 Slot 5



2.4.4 Slot 6

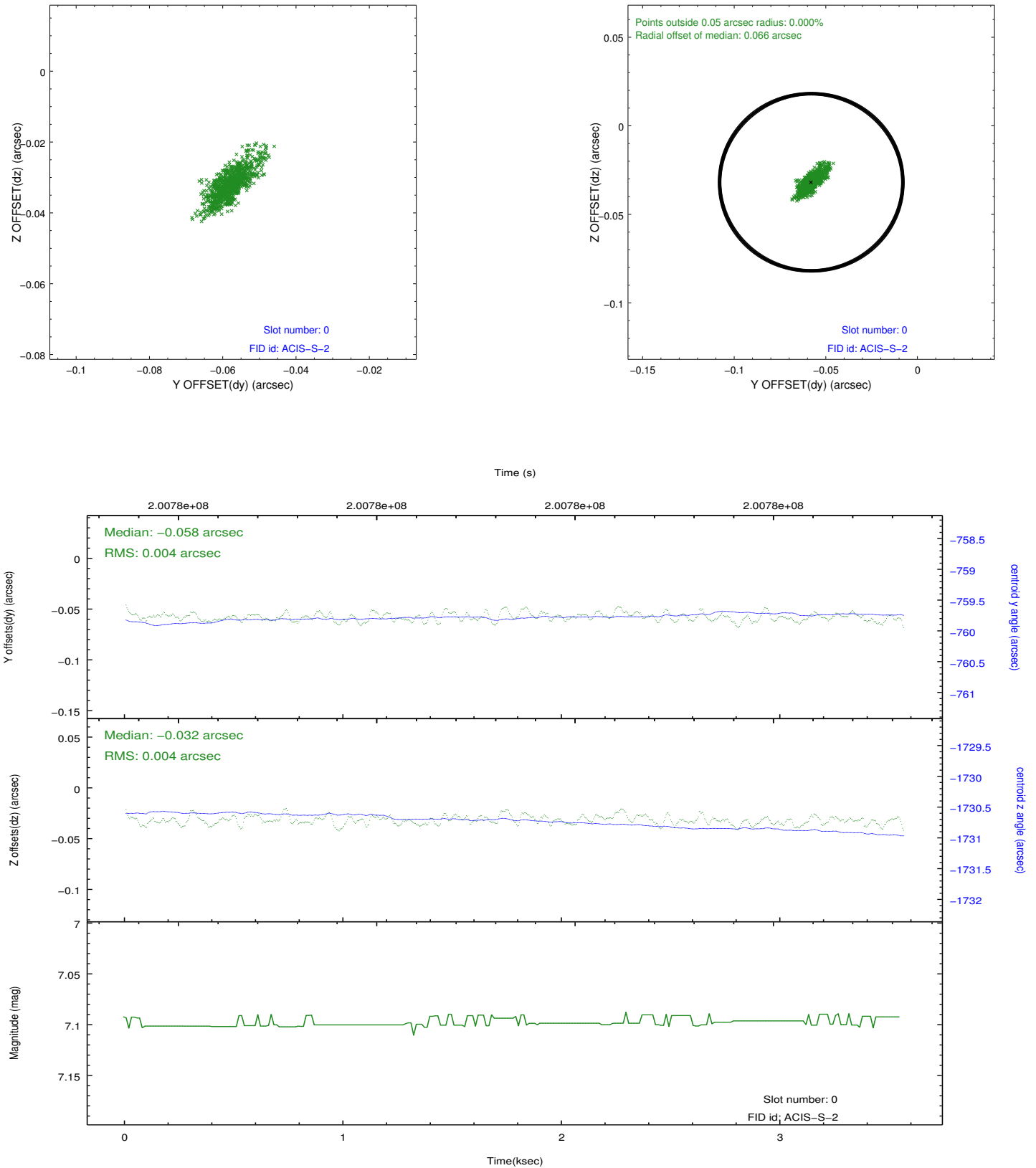


2.4.5 Slot 7

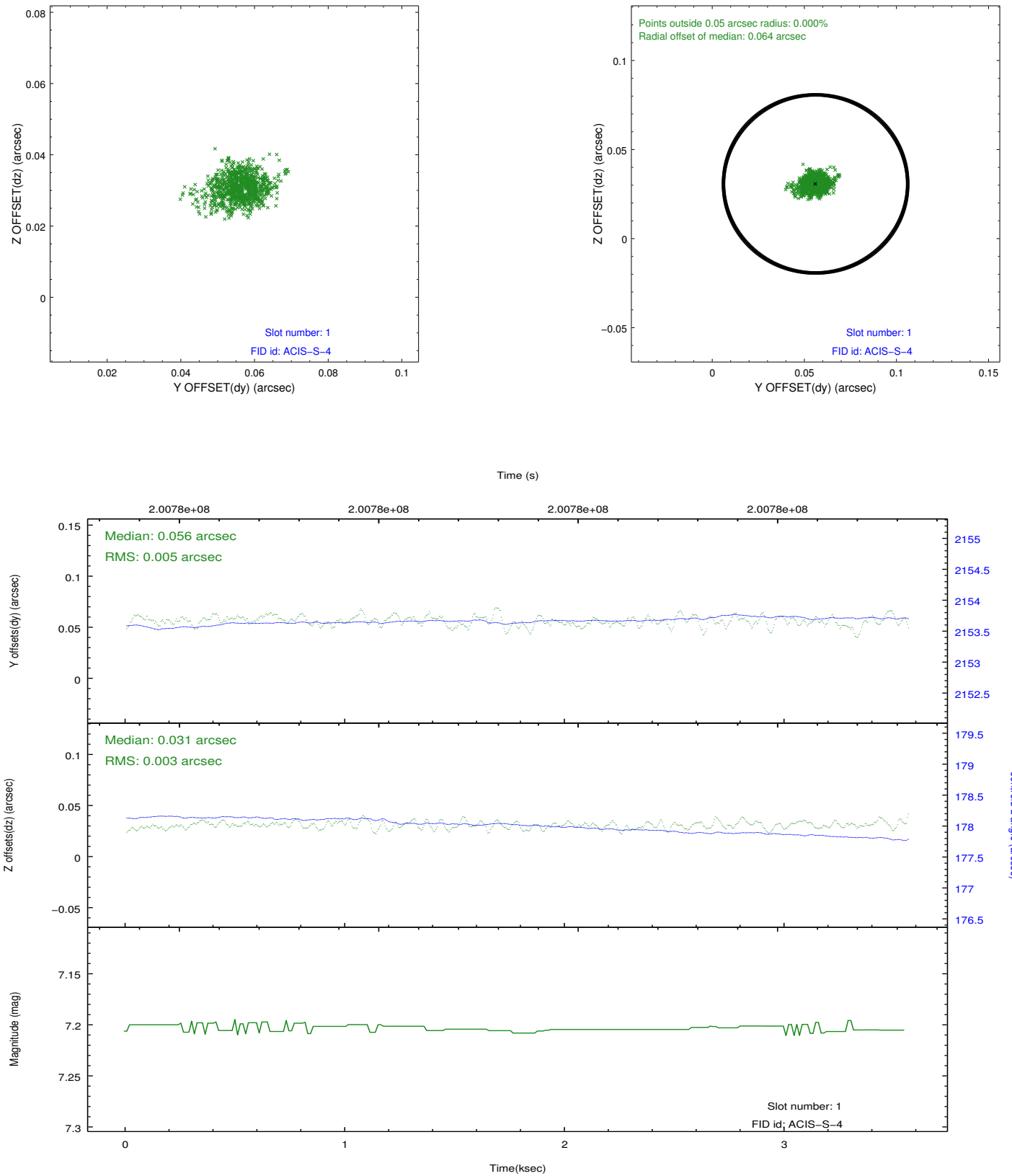


2.5 FID Slots

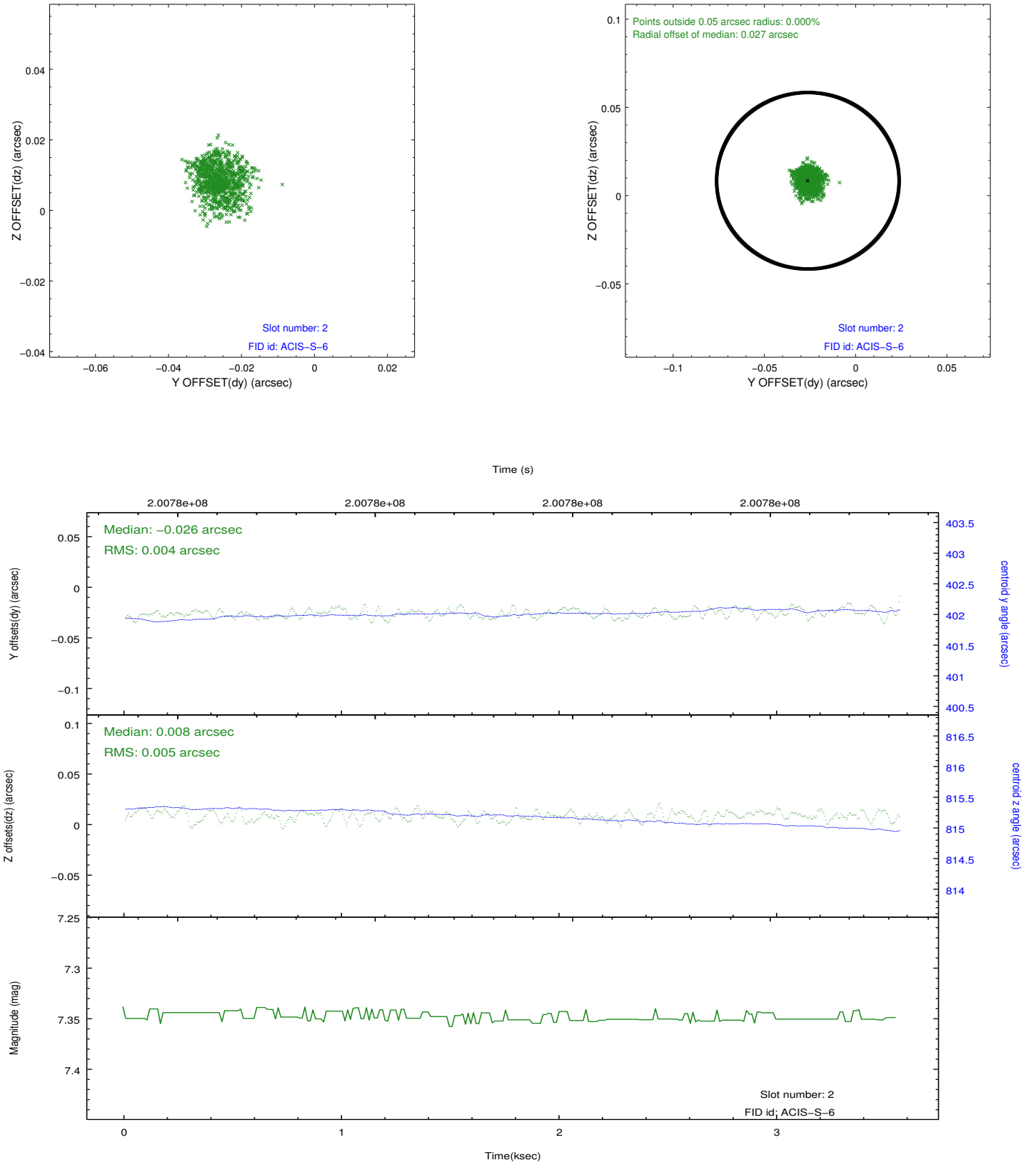
2.5.1 Slot 0



2.5.2 Slot 1



2.5.3 Slot 2



A Summary

A.1 Status

V&V Scientist	Beth Sundheim
V&V Date (YYYY-MM-DD)	2012.12.11
V&V Edition	1
V&V Disposition and Status	OK
V&V Charge Time	3.558

A.2 Comments

Window preference met.