

V&V Reference Report

L2 ASCDS Version : 7.6.7.2

Observation 5321 - L2 Version 001
Chandra X-Ray Center

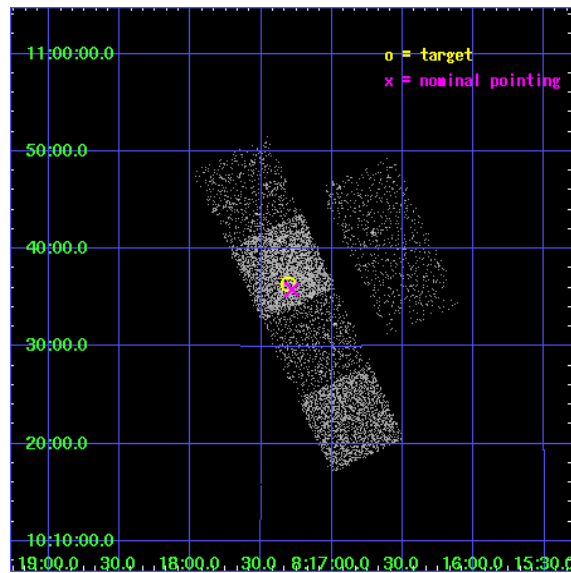
L2 Processing Date : May 18 2006

Contents

1	Front	2
2	OBI	3
2.1	OBI	3
2.1.1	Images	3
2.1.2	Bias	3
2.1.3	Parameters	4
2.1.4	Events	4
2.2	Compared Parameters	5
2.3	Aspect	6
2.4	Star Slots	9
2.4.1	Slot 3	9
2.4.2	Slot 4	10
2.4.3	Slot 5	11
2.4.4	Slot 6	12
2.4.5	Slot 7	13
2.5	FID Slots	14
2.5.1	Slot 0	14
2.5.2	Slot 1	15
2.5.3	Slot 2	16
3	Point Sources	17
A	Summary	18
A.1	Status	18
A.2	Comments	18

1 Front

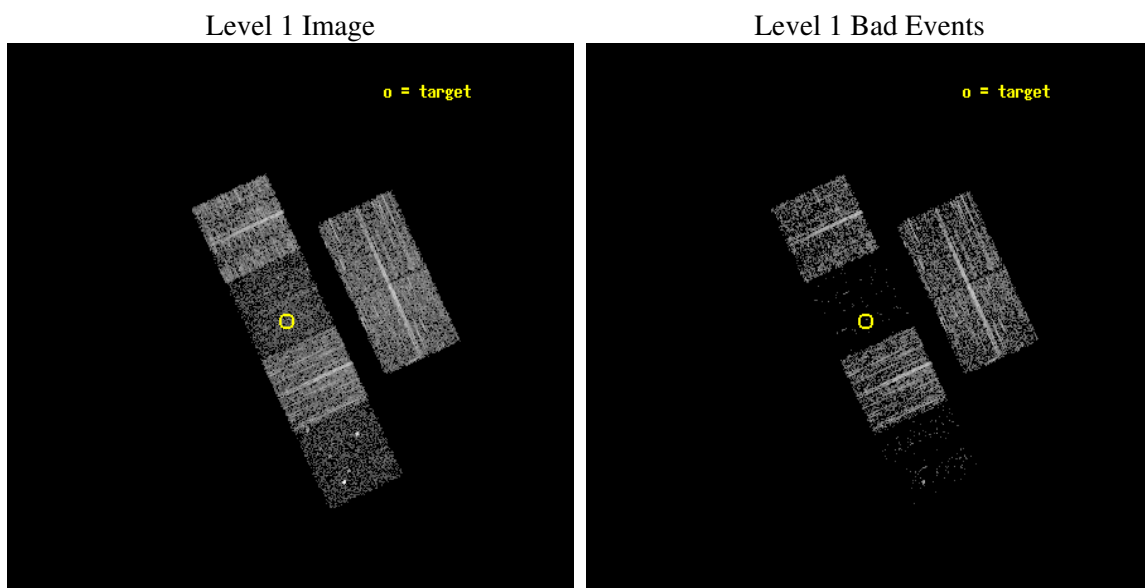
seq_num	100053
obs_id	5321
title	Chandra Snapshot Spectral Imaging of Comets C/2001 Q4 (NEAT) and C/2002 T7 (LINEAR)
observer	Dr. Carey Lisse
object	C/2001 Q4 (NEAT)
dtcycle	0
cycle	P
ra_targ	124.32631
dec_targ	10.605365
ra_nom	124.32062147023
dec_nom	10.597271504619
roll_nom	245.15760048843
revision	2
ontime	3558.3999867439
livetime	3513.3413835005
ontime2	3558.3999867439
ontime3	3558.3999867439
ontime5	3558.3999867439
ontime6	3558.3999867439
ontime7	3558.3999867439
ontime8	3558.3999867439
l2events	9140



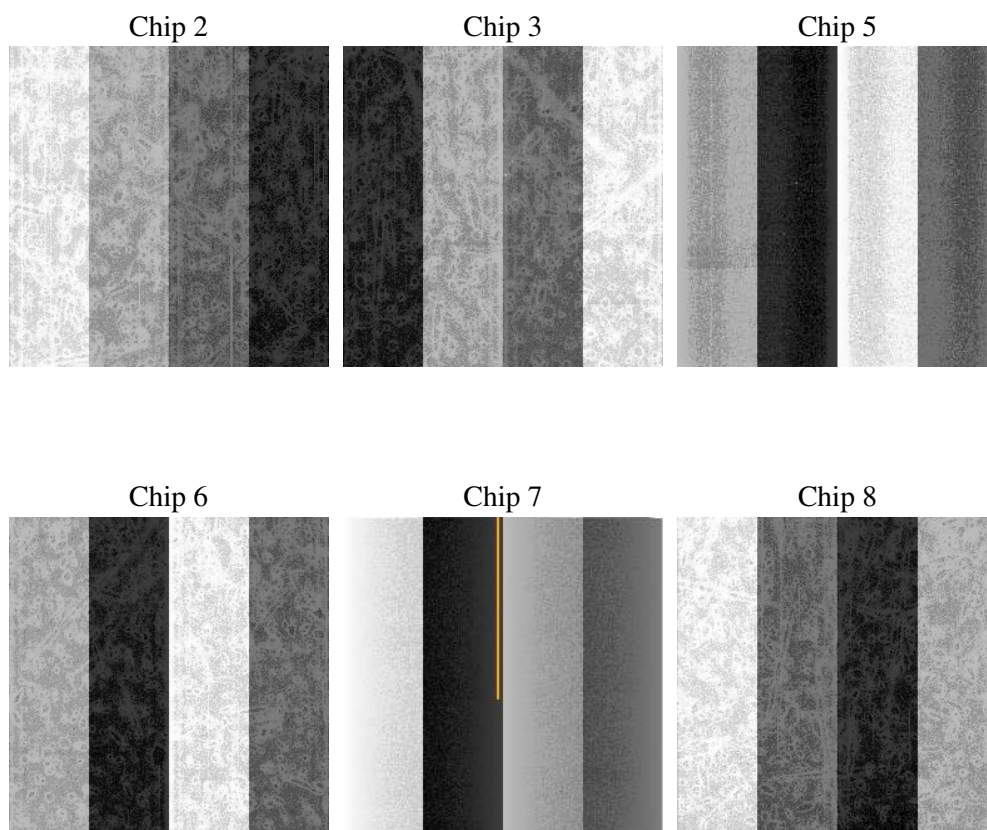
2 OBI

2.1 OBI

2.1.1 Images



2.1.2 Bias



2.1.3 Parameters

obi_num	0
ascdsver	7.6.7.2
caldsver	3.2.2
date	2006-05-19T00:10:07
revision	2

sched_exp_time	3400.000000
ontime	3704.4695236385
ontime2	3704.4695037305
ontime3	3704.4695037305
ontime5	3704.4695236385
ontime6	3704.4695037305
ontime7	3704.4695236385
ontime8	3704.4695236385
l1events	71835

2.1.4 Events

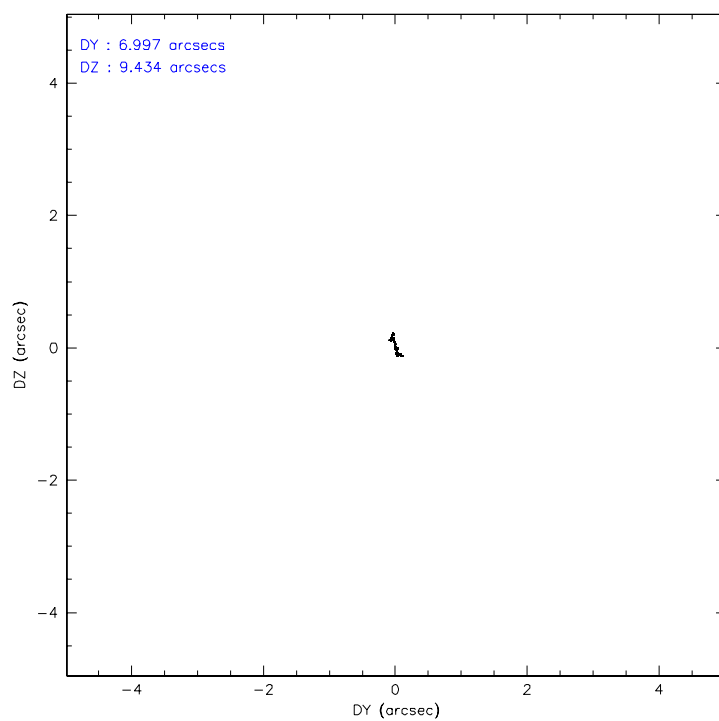
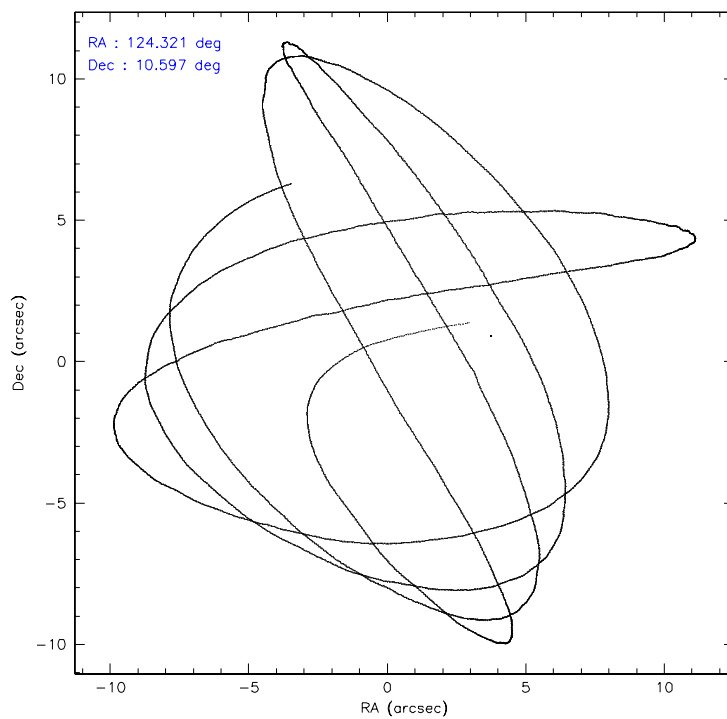
	ccd 2	ccd 3	ccd 5	ccd 6	ccd 7	ccd 8
level 1 events	15914	14174	4782	15567	4960	16438
rejected events	15226	13593	944	14435	618	12534
rejected %	95%	95%	19%	92%	12%	76%

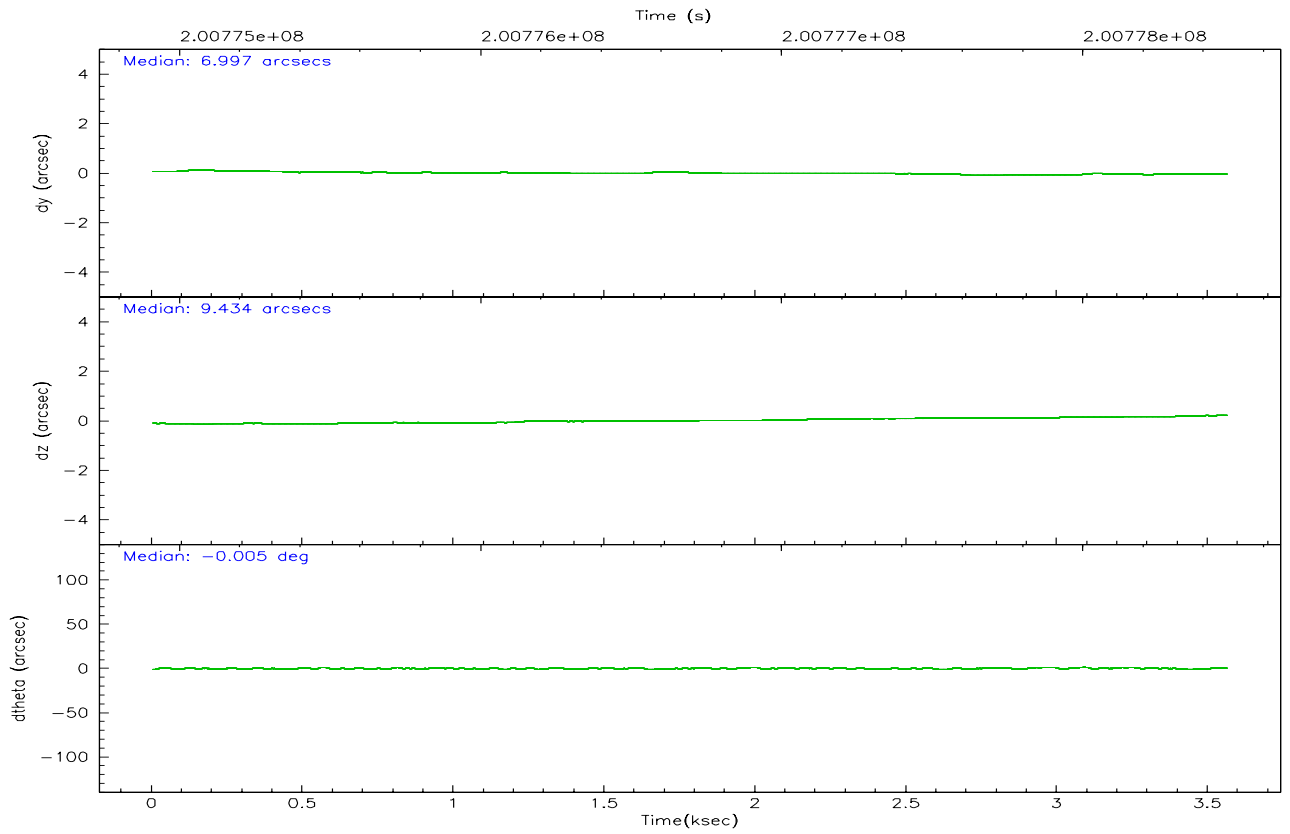
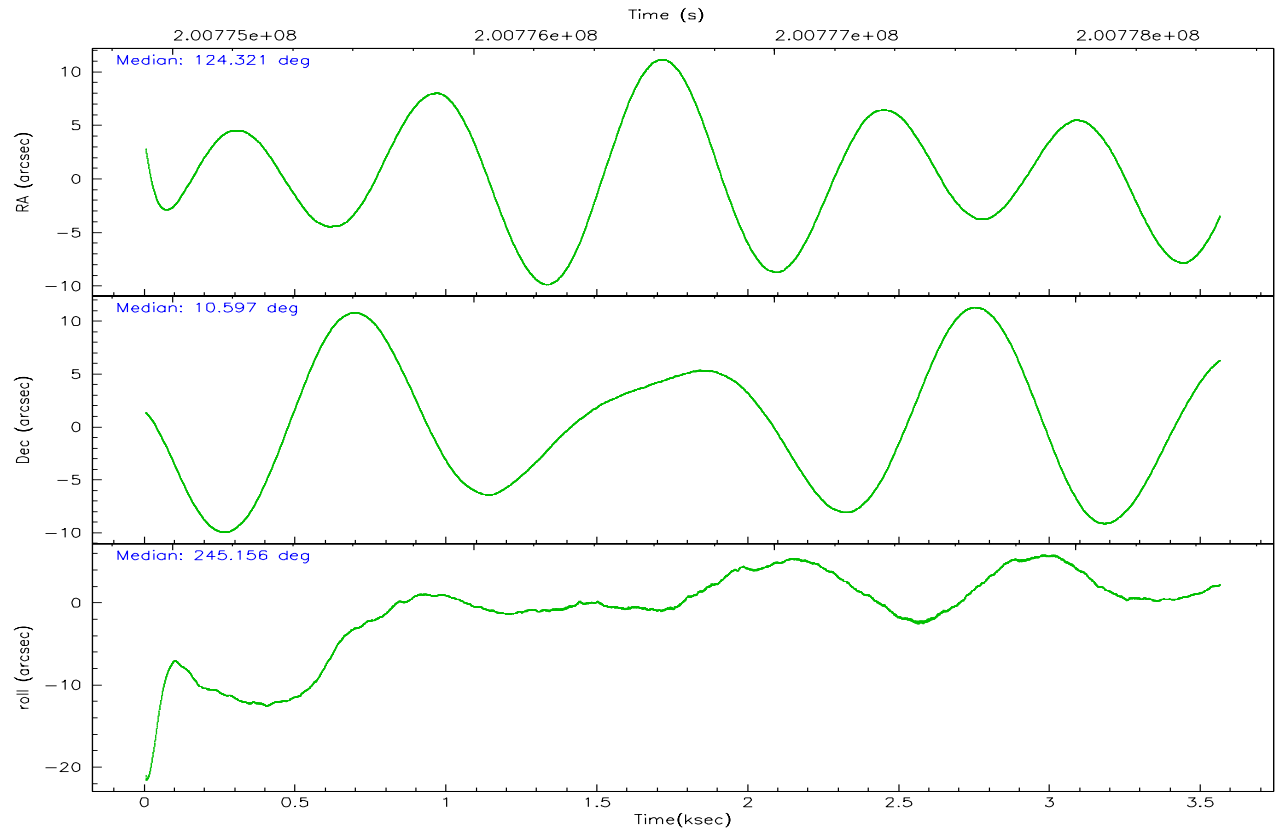
	ccd 2	ccd 3	ccd 5	ccd 6	ccd 7	ccd 8
grade 0 events	321	314	2027	751	2124	1267
	2%	2%	42%	4%	42%	7%
grade 1 events	6	3	78	8	6	14
	0%	0%	1%	0%	0%	0%
grade 2 events	160	76	986	154	1136	884
	1%	0%	20%	0%	22%	5%
grade 3 events	85	71	386	90	478	472
	0%	0%	8%	0%	9%	2%
grade 4 events	88	99	348	118	487	426
	0%	0%	7%	0%	9%	2%
grade 5 events	12	11	127	15	76	79
	0%	0%	2%	0%	1%	0%
grade 6 events	69	42	244	62	359	1057
	0%	0%	5%	0%	7%	6%
grade 7 events	15173	13558	586	14369	294	12239
	95%	95%	12%	92%	5%	74%

2.2 Compared Parameters

Parameter	Planned	Actual	Parameter	Planned	Actual
Instrument	ACIS	ACIS	Obspar format version number	6	6
Detector	ACIS-235678	ACIS-235678	Obspar file type	PREDICTED	ACTUAL
Grating	NONE	NONE	Obspar update status	NONE	UPDATED
Data mode	VFAINT	VFAINT	On-chip summing requested	N	N
Observation mode	POINTING	POINTING	Subarray requested	NONE	NONE
Pointing RA	124.317813	124.3206214702262	Alternating exposures requested	N	N
Pointing Dec	10.624524	10.5972715046186	Primary exposure time	0.000000	3.2
Pointing Roll	245.001562	245.1576004884331			
Window start time	200361664.184000	200361664.184000			
Window stop time	201484864.184000	201484864.184000			
SIM focus pos (mm)	-0.684267	-0.6828225247311905			
SIM defocus (mm)	0	0.001444936568705701			
SIM translation stage pos (mm)	-190.132523	-190.1400660498719			
SIM translation stage offset (mm)	0	0.00754346686406393			
Observation start time	200775078.184000	200774015.16336			
Observation start date	2004-05-12T18:50:14	2004-05-12T18:33:35			
Observation end time	200778478.184000	200778612.80107			
Observation end date	2004-05-12T19:46:54	2004-05-12T19:50:12			
Read mode	TIMED	TIMED			

2.3 Aspect



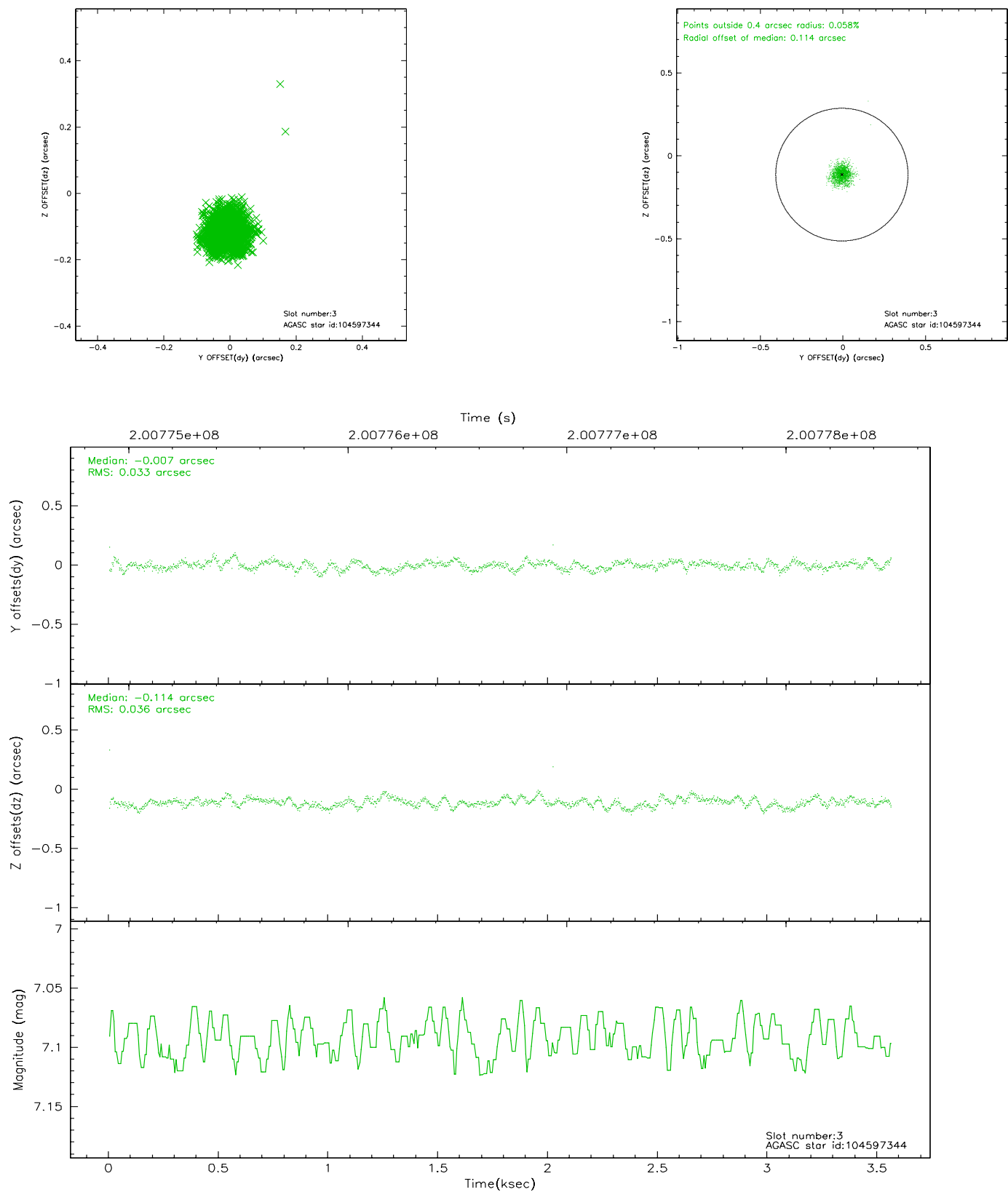


Slot Statistics

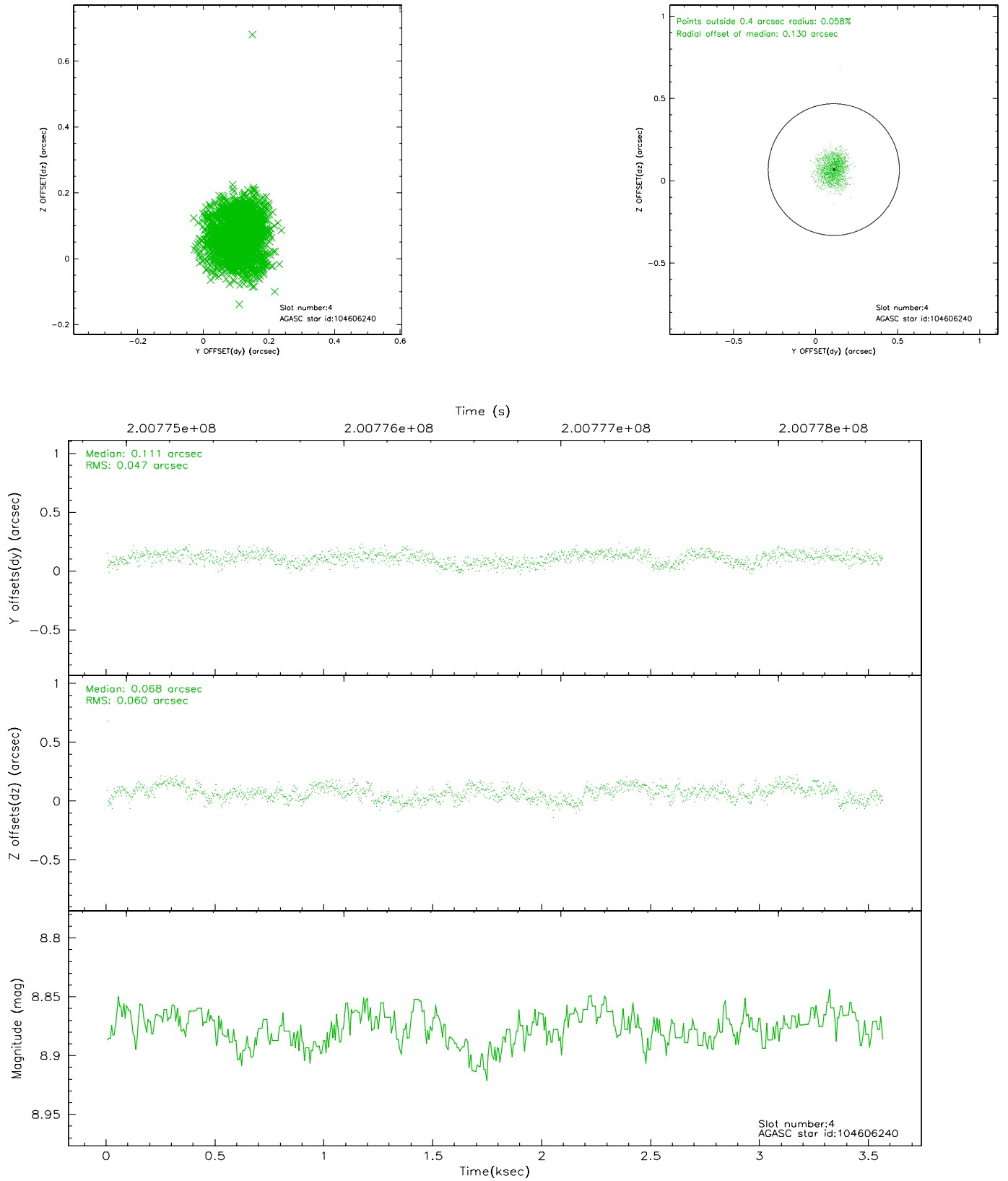
slot	status	id	mag	n_pts	med_dy	med_dz	dr1	dr2	ra	dec	mean_y	mean_z
0	FID	ACIS-S-2	7.10	869	-0.033	-0.005	0.005	0.009	0.000000	0.000000	-759.77	-1730.69
1	FID	ACIS-S-4	7.20	869	0.028	0.023	0.006	0.009	0.000000	0.000000	2152.75	176.01
2	FID	ACIS-S-6	7.35	869	-0.023	-0.011	0.007	0.010	0.000000	0.000000	404.48	815.38
3	GUIDE	104597344	7.09	1738	-0.007	-0.114	0.050	0.081	124.136828	11.043606	-1097.67	-1217.09
4	GUIDE	104606240	8.88	1738	0.111	0.068	0.082	0.126	124.221640	10.540343	417.68	-180.78
5	GUIDE	104728024	9.70	1734	-0.022	0.026	0.110	0.184	124.793410	10.914039	-1656.48	1082.87
6	GUIDE	104729968	9.26	1735	0.081	0.070	0.090	0.145	124.567030	10.276646	760.35	1330.19
7	GUIDE	105125392	7.58	1737	-0.163	-0.047	0.054	0.090	124.280650	11.351214	-2315.70	-1223.54

2.4 Star Slots

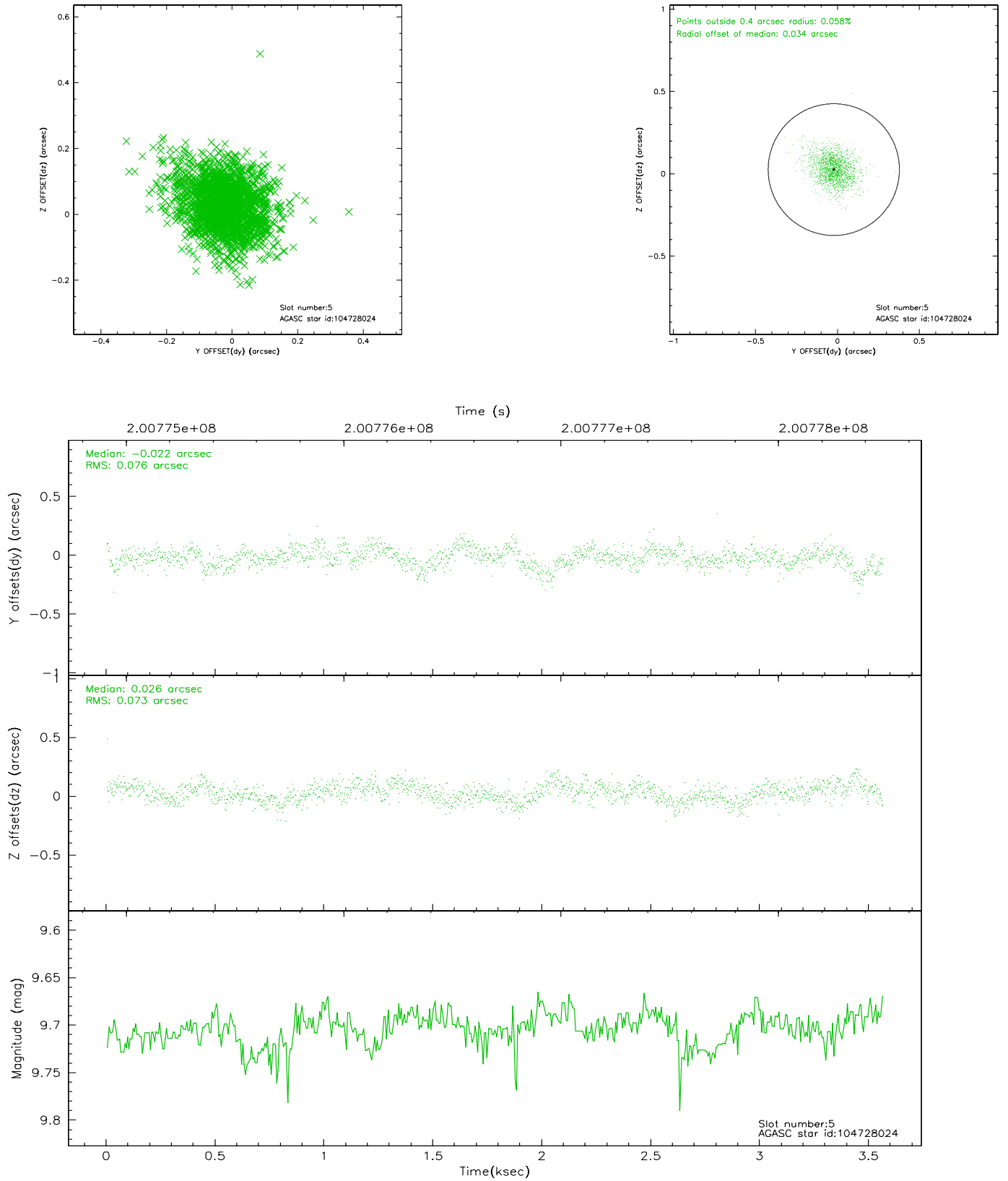
2.4.1 Slot 3



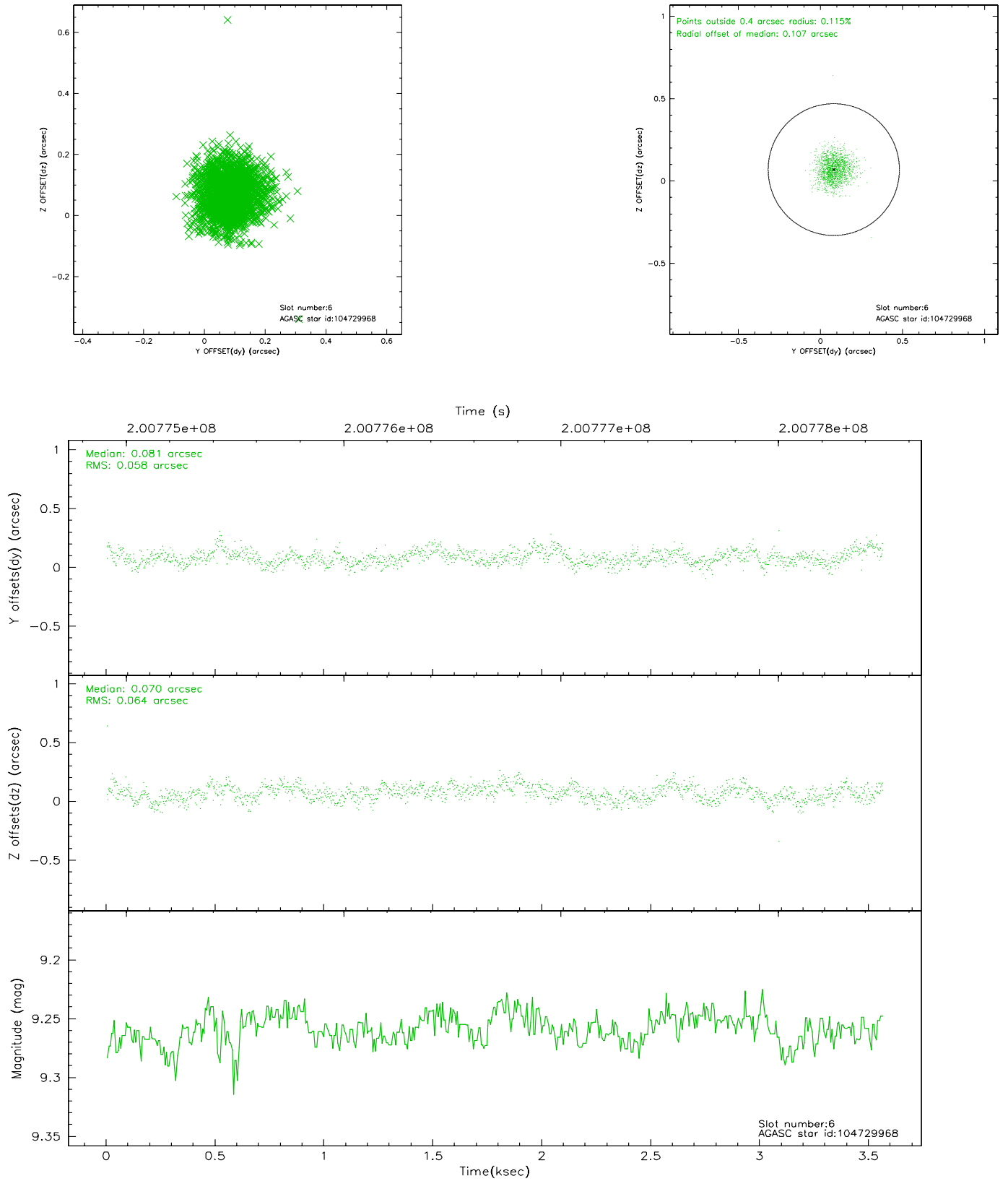
2.4.2 Slot 4



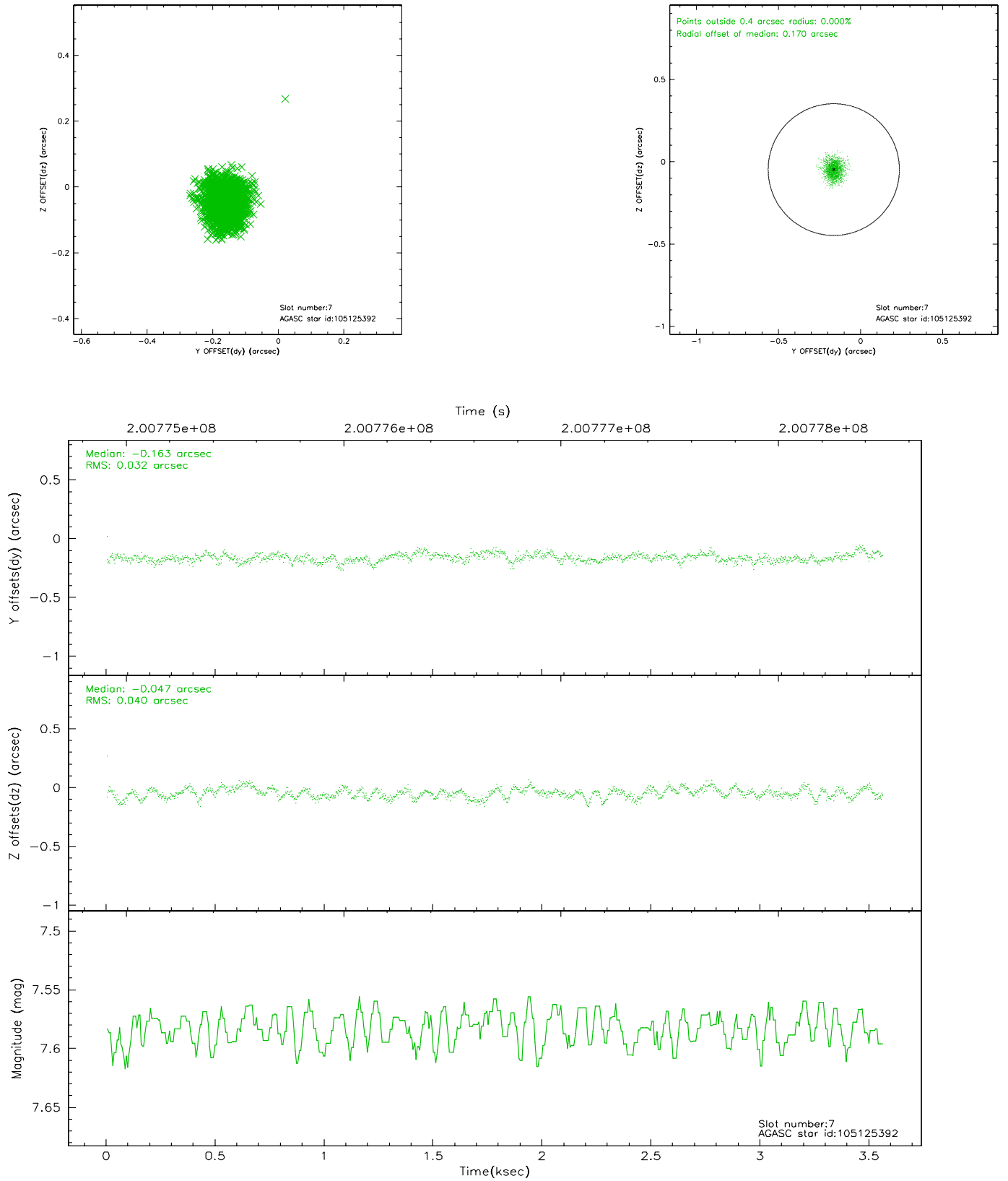
2.4.3 Slot 5



2.4.4 Slot 6

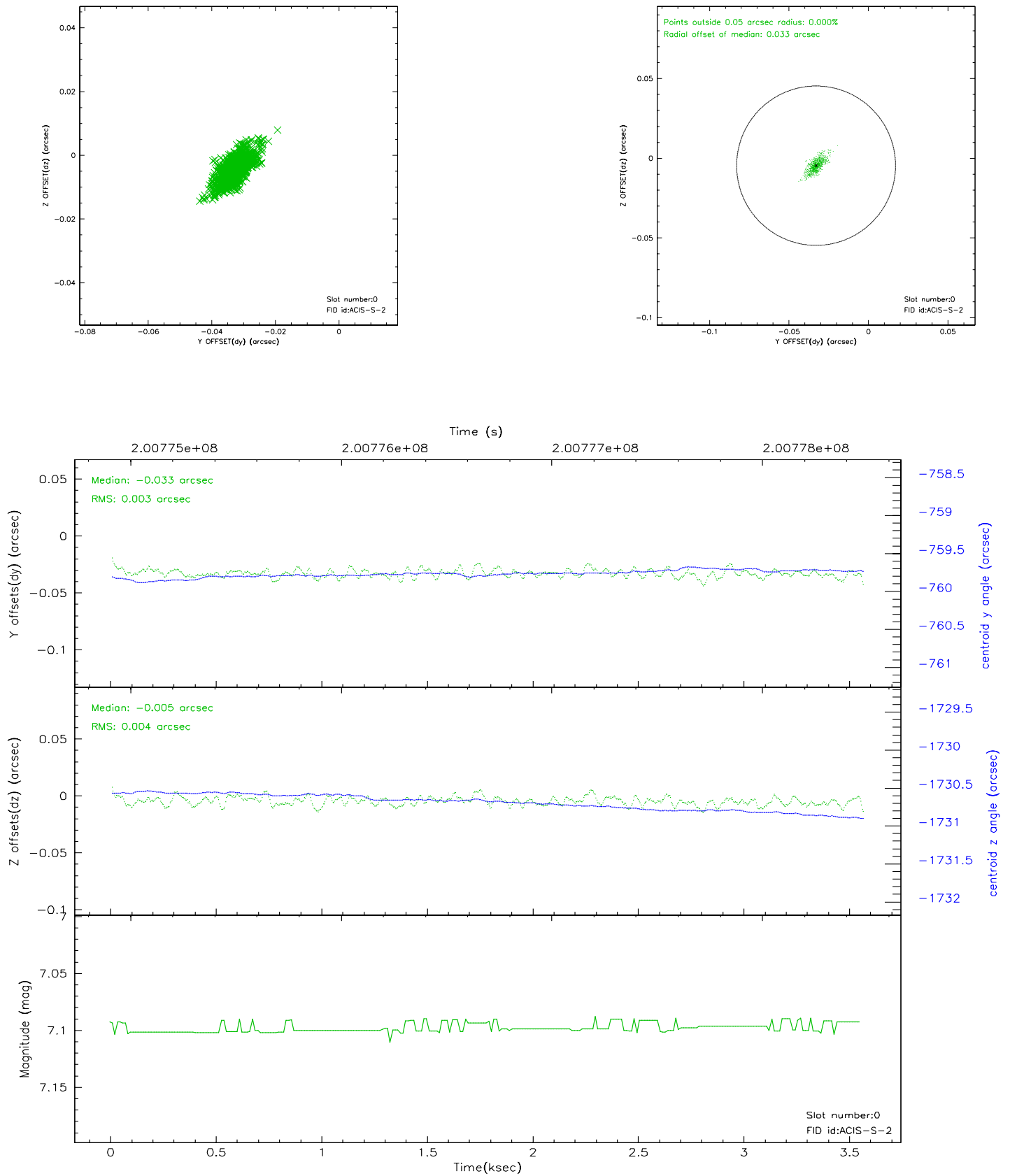


2.4.5 Slot 7

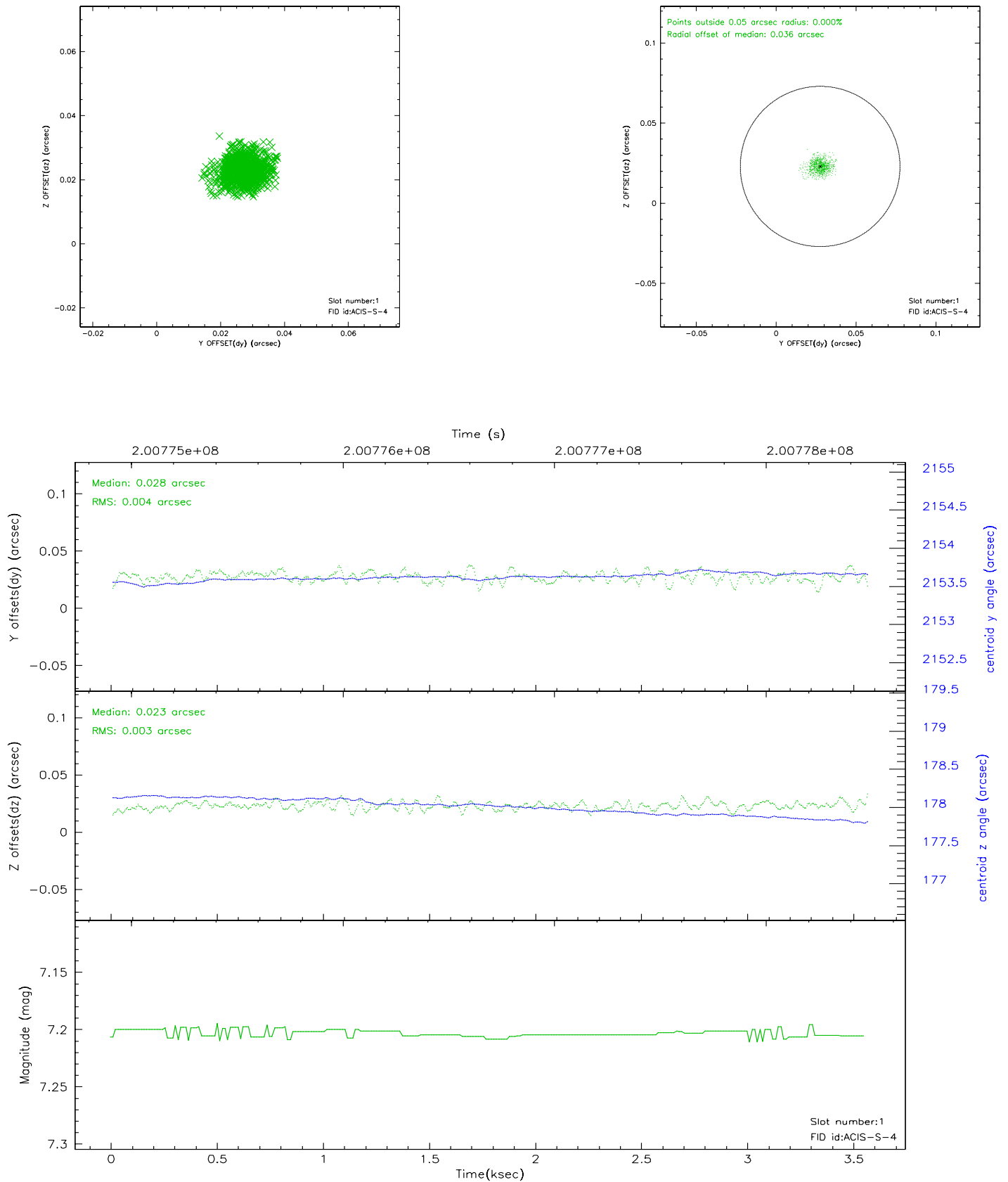


2.5 FID Slots

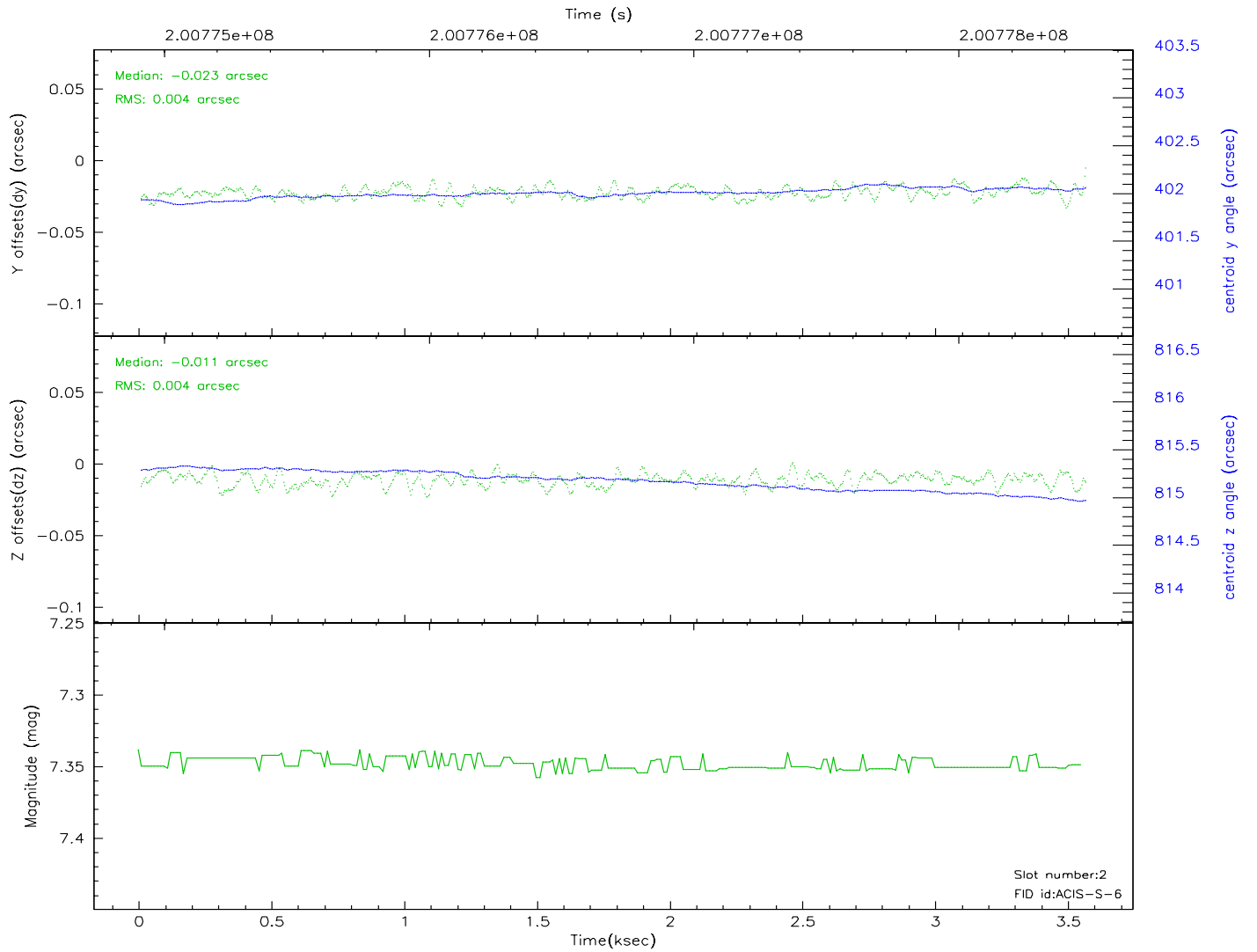
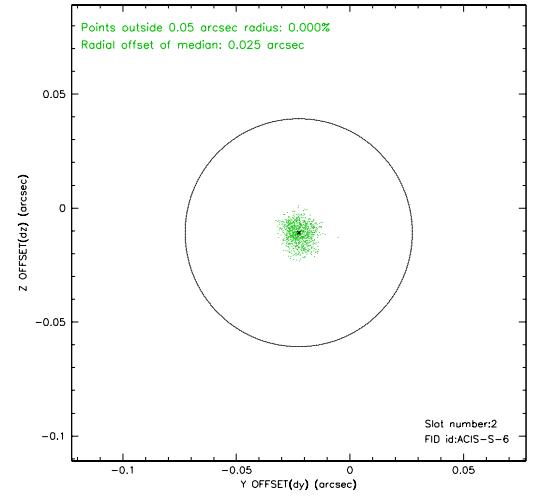
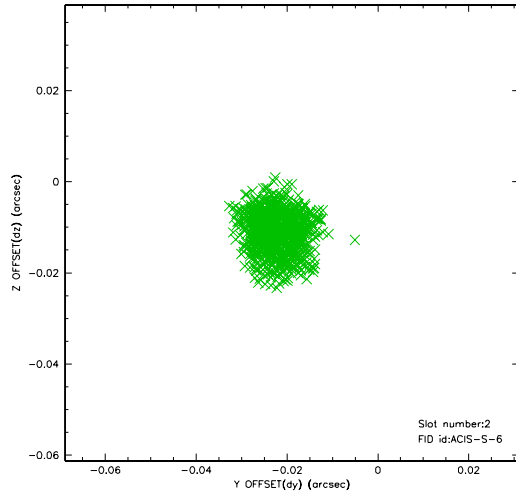
2.5.1 Slot 0



2.5.2 Slot 1



2.5.3 Slot 2



3 Point Sources

A Summary

A.1 Status

V&V Scientist	Jen Lauer
V&V Date (YYYY-MM-DD)	2006.05.19
V&V Edition	1
V&V Disposition and Status	OK
V&V Charge Time	3.558

A.2 Comments

Window constraint met. Roll preference met.