

V&V Reference Report

L2 ASCDS Version : 8.4.5

Observation 4273 - L2 Version 3
Chandra X-Ray Center

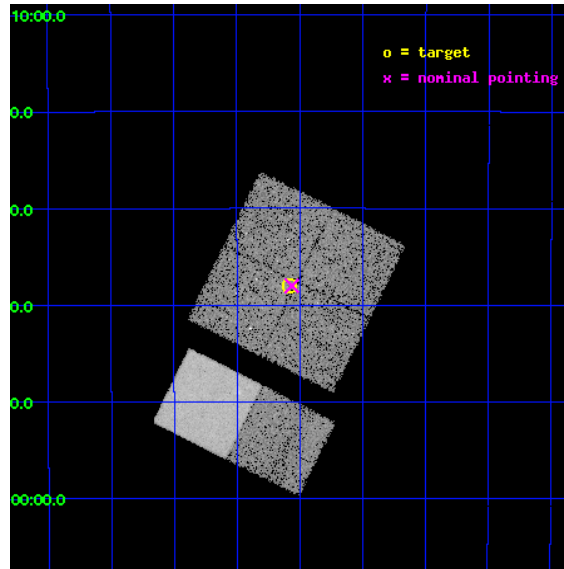
L2 Processing Date : Oct 28 2012

Contents

1	Front	2
2	OBI	3
2.1	OBI	3
2.1.1	Images	3
2.1.2	Bias	3
2.1.3	Parameters	4
2.1.4	Events	4
2.2	Compared Parameters	5
2.3	Aspect	6
2.4	Star Slots	9
2.4.1	Slot 3	9
2.4.2	Slot 4	10
2.4.3	Slot 5	11
2.4.4	Slot 6	12
2.4.5	Slot 7	13
2.5	FID Slots	14
2.5.1	Slot 0	14
2.5.2	Slot 1	15
2.5.3	Slot 2	16
A	Summary	17
A.1	Status	17
A.2	Comments	17

1 Front

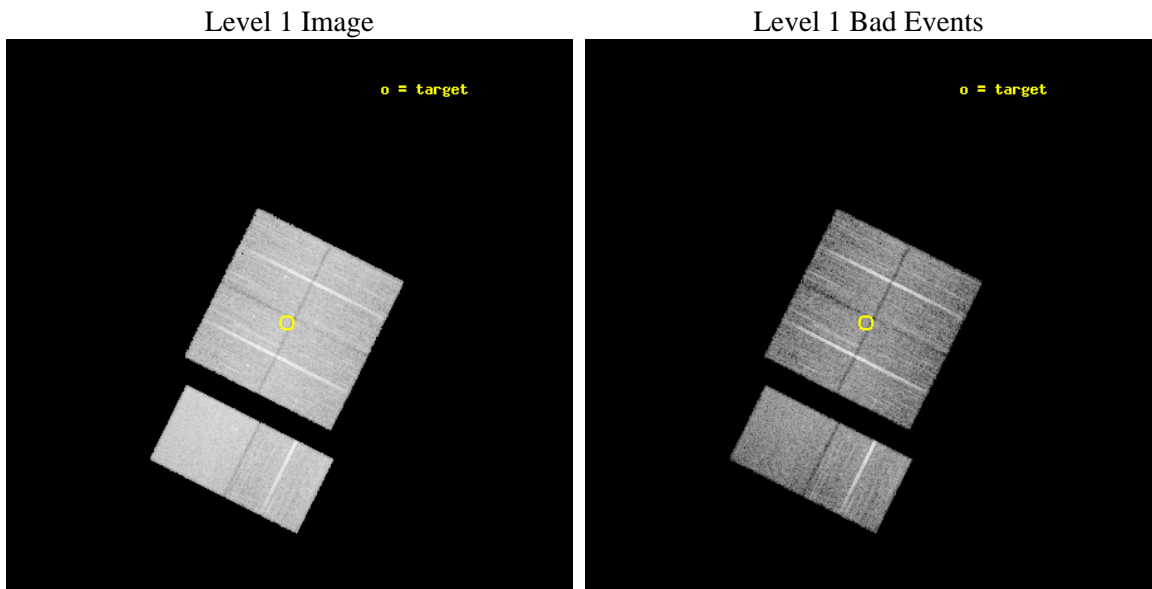
seq_num	900316	Sequence number
obs_id	4273	Observation id
title	CHASING QUASAR 2	Proposal title
observer	Dr Fabrizio Fiore	Principal investigator
object	PKS0537-28_1	Source name
dtcycle	0	
cycle	P	events from which exps? Prim/Second/Both
ra_targ	84.770833	Observer's specified target RA [deg]
dec_targ	-28.633333	Observer's specified target Dec [deg]
ra_nom	84.765562259388	Nominal RA [deg]
dec_nom	-28.633582438042	Nominal Dec [deg]
roll_nom	206.53945454579	Nominal Roll [deg]
revision	3	Processing version of data
ontime	14963.158954054	Sum of GTIs [s]
livetime	14773.686425645	Livetime [s]
ontime0	14966.399944246	Sum of GTIs [s]
ontime1	14966.399944246	Sum of GTIs [s]
ontime2	14963.158954054	Sum of GTIs [s]
ontime3	14963.158954054	Sum of GTIs [s]
ontime6	14966.399944246	Sum of GTIs [s]
ontime7	14966.399944246	Sum of GTIs [s]
l2events	99771	Number of level 2 events



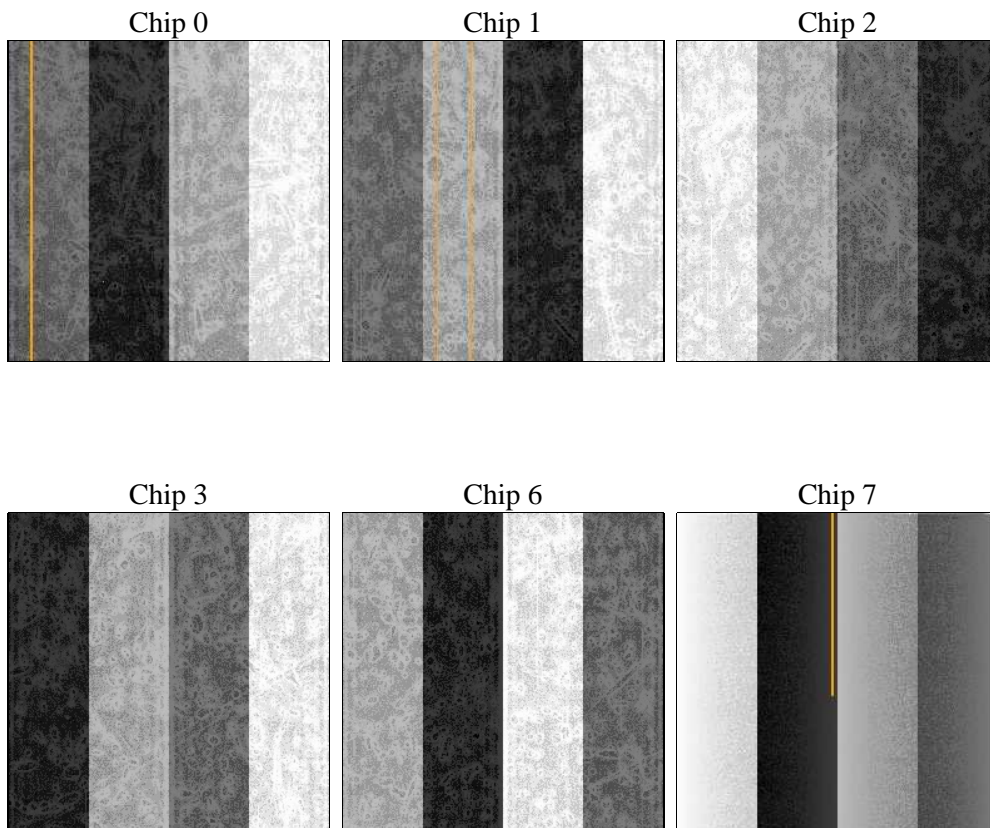
2 OBI

2.1 OBI

2.1.1 Images



2.1.2 Bias



2.1.3 Parameters

obi_num	0	Obi number	sched_exp_time	15000.000000	[s] Scheduled observation exposure time
ascdsver	8.4.5	Processing system revision	ontime	14963.158954054	Sum of GTIs [s]
caldsver	4.5.2	 	ontime0	14966.399944246	Sum of GTIs [s]
date	2012-10-28T13:35:40	Date and time of file creation	ontime1	14966.399944246	Sum of GTIs [s]
revision	3	Processing version of data	ontime2	14963.158954054	Sum of GTIs [s]
			ontime3	14963.158954054	Sum of GTIs [s]
			ontime6	14966.399944246	Sum of GTIs [s]
			ontime7	14966.399944246	Sum of GTIs [s]
			l1events	586520	Number of level 1 events

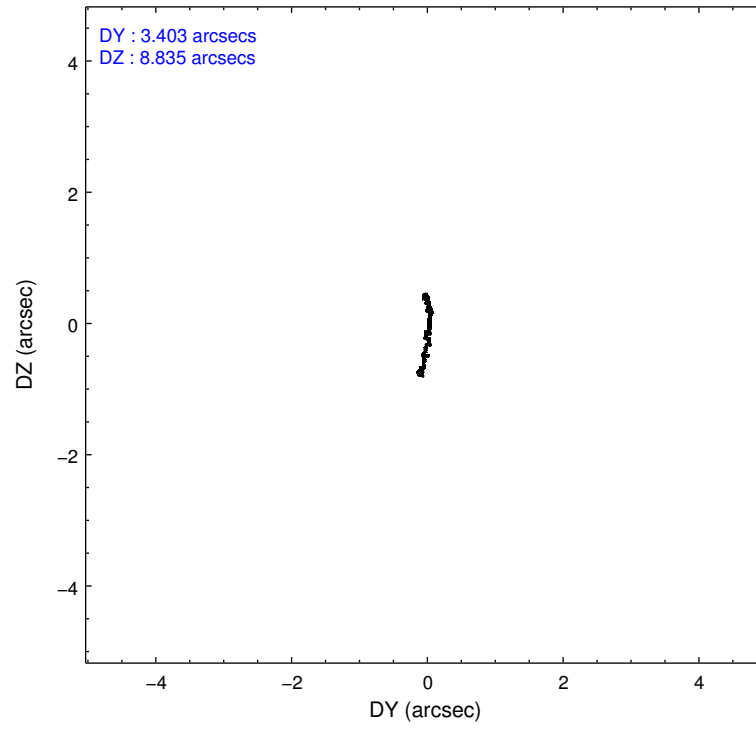
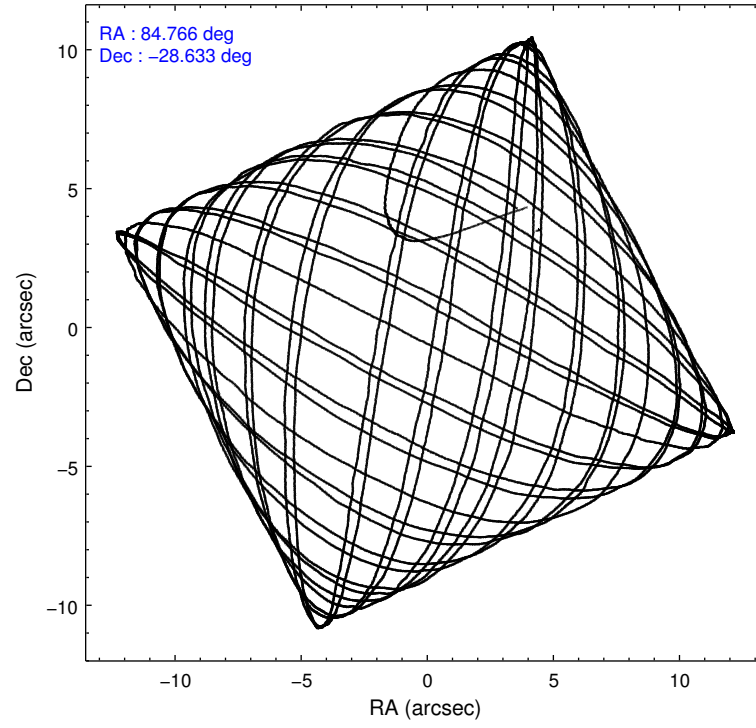
2.1.4 Events

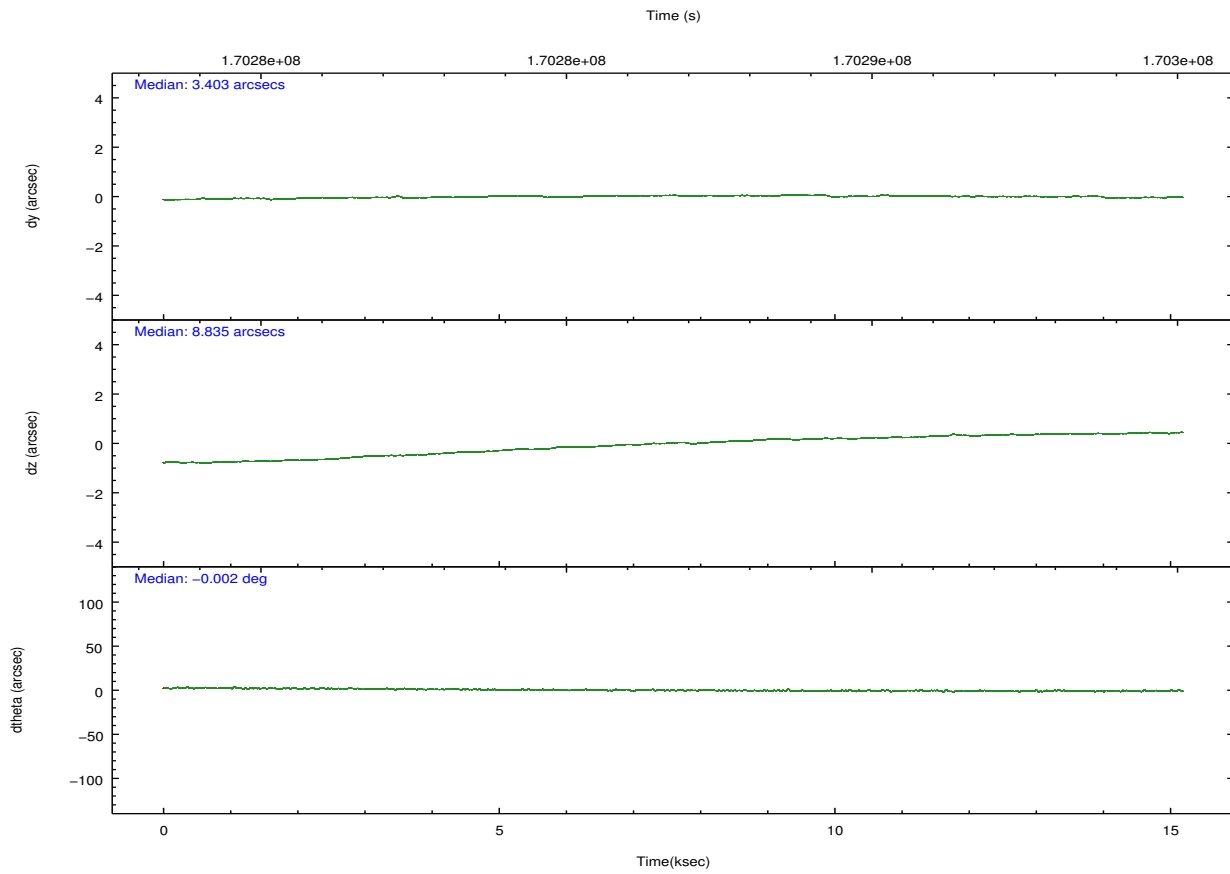
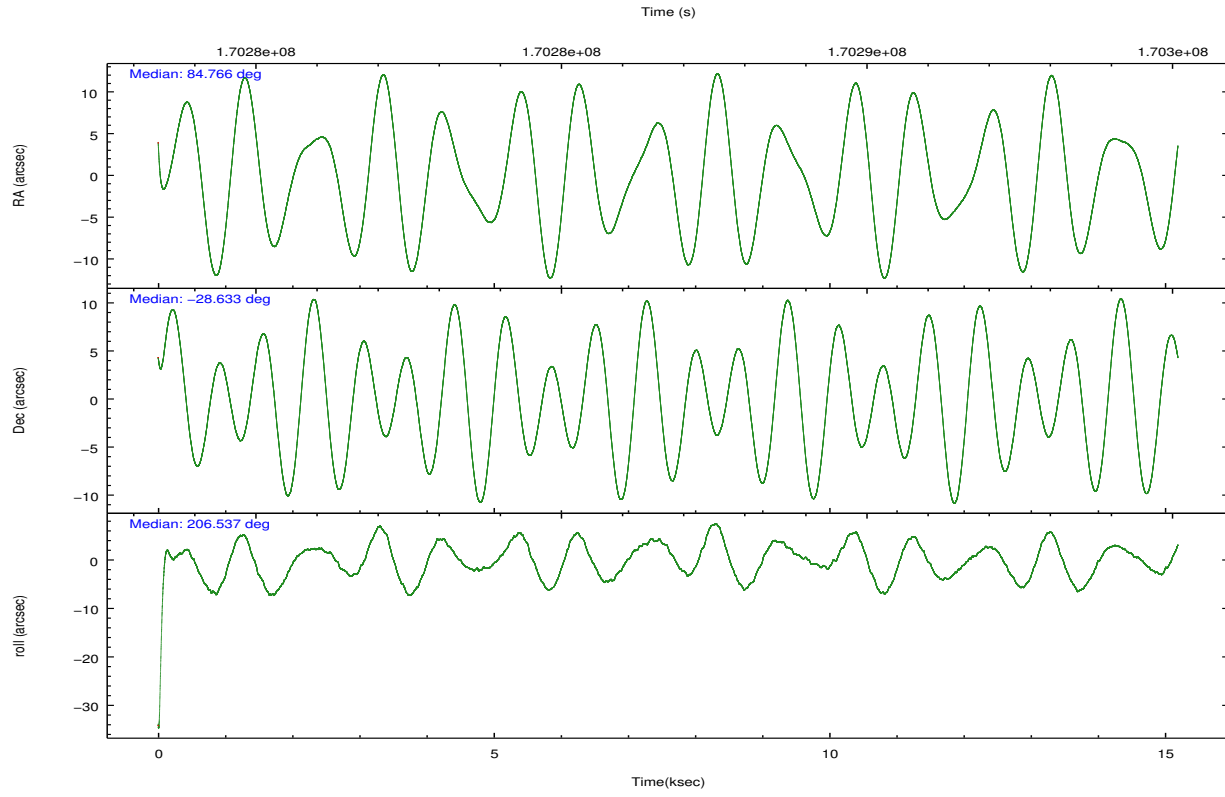
	ccd 0	ccd 1	ccd 2	ccd 3	ccd 6	ccd 7		ccd 0	ccd 1	ccd 2	ccd 3	ccd 6	ccd 7
level 1 events	86833	89418	91977	93235	98729	126328	grade 0 events	5014	4795	5164	5081	4438	4910
rejected events	75310	77697	80639	81932	87553	74453		5%	5%	5%	5%	4%	3%
rejected %	86%	86%	87%	87%	88%	58%	grade 1 events	54	39	53	69	42	133
								0%	0%	0%	0%	0%	0%
							grade 2 events	2350	2496	2194	2087	2307	10377
								2%	2%	2%	2%	2%	8%
							grade 3 events	1169	1112	1040	1138	1092	4630
								1%	1%	1%	1%	1%	3%
							grade 4 events	1021	1161	1139	1124	1064	4538
								1%	1%	1%	1%	1%	3%
							grade 5 events	3741	3907	3611	4153	4414	12010
								4%	4%	3%	4%	4%	9%
							grade 6 events	1972	2160	1805	1877	2278	27437
								2%	2%	1%	2%	2%	21%
							grade 7 events	71512	73748	76971	77706	83094	62293
								82%	82%	83%	83%	84%	49%

2.2 Compared Parameters

Parameter	Planned	Actual	Parameter	Planned	Actual
Instrument	ACIS	ACIS	Obspar format version number	7	7
Detector	ACIS-012367	ACIS-012367	Obspar file type	PREDICTED	ACTUAL
Grating	NONE	NONE	Obspar update status	NONE	UPDATED
Data mode	VFAINT	VFAINT	Number of optional ACIS chips dropped	0	0
Observation mode	POINTING	POINTING	On-chip summing requested	N	N
[deg] Pointing RA	84.782659	84.7655622593883	Subarray requested	NONE	NONE
[deg] Pointing Dec	-28.610716	-28.63358243804233	Alternating exposures requested	N	N
[deg] Pointing Roll	206.338996	206.5394545457915	[s] Primary exposure time	0.000000	3.2
[mm] SIM focus pos	-0.782348	-0.7809083437167272			
[mm] SIM defocus	0	0.001439871863259334			
[mm] SIM translation stage pos	-233.592463	-233.5874344608287			
[mm] SIM translation stage offset	0	-0.005018542100998502			
[s] Observation start time (MET)	170279337.184000	170278369.6441			
Observation start date	2003-05-25T19:47:53	2003-05-25T19:32:49			
[s] Observation end time (MET)	170294337.184000	170295166.31981			
Observation end date	2003-05-25T23:57:53	2003-05-26T00:12:46			
Read mode	TIMED	TIMED			

2.3 Aspect



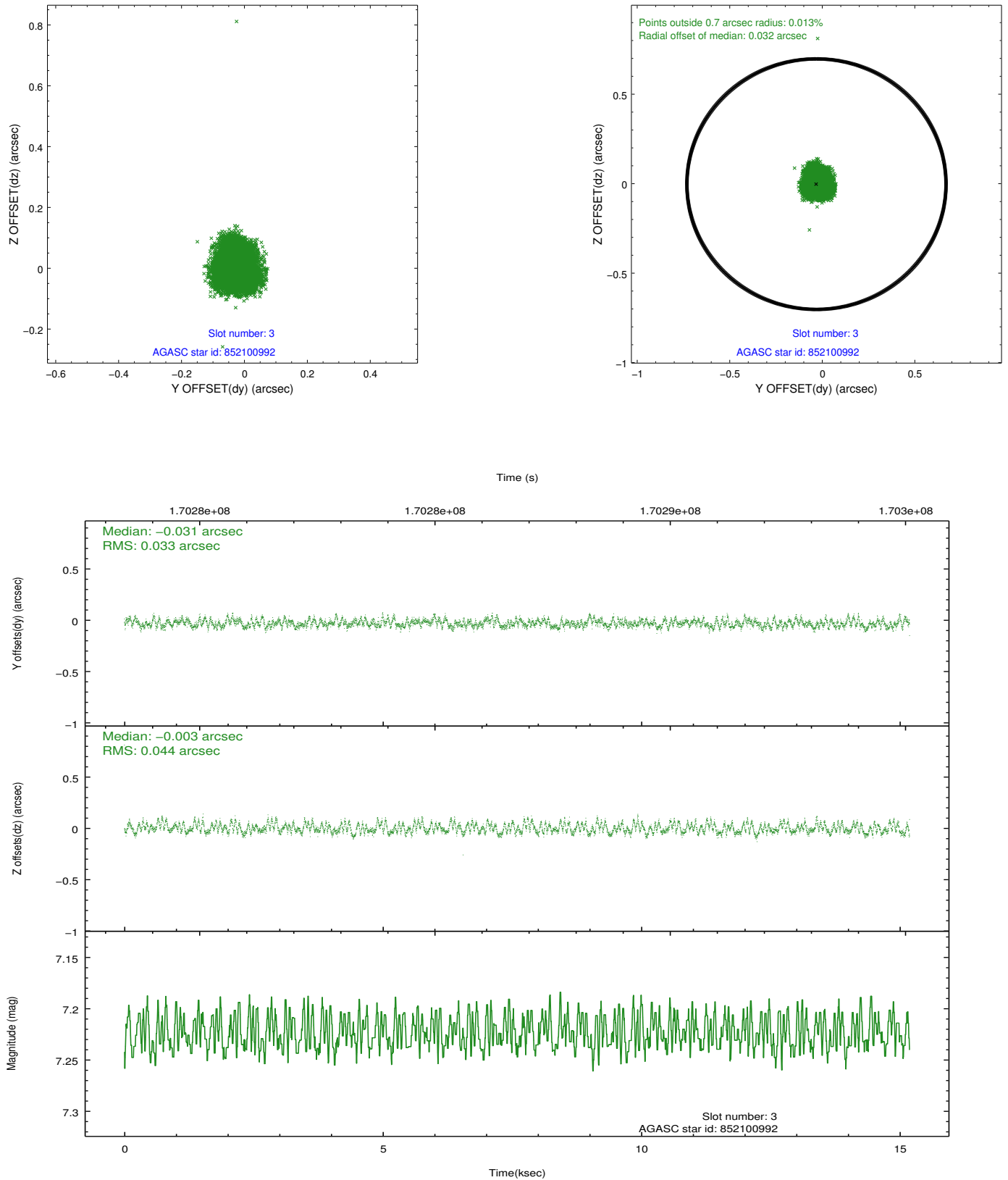


Slot Statistics

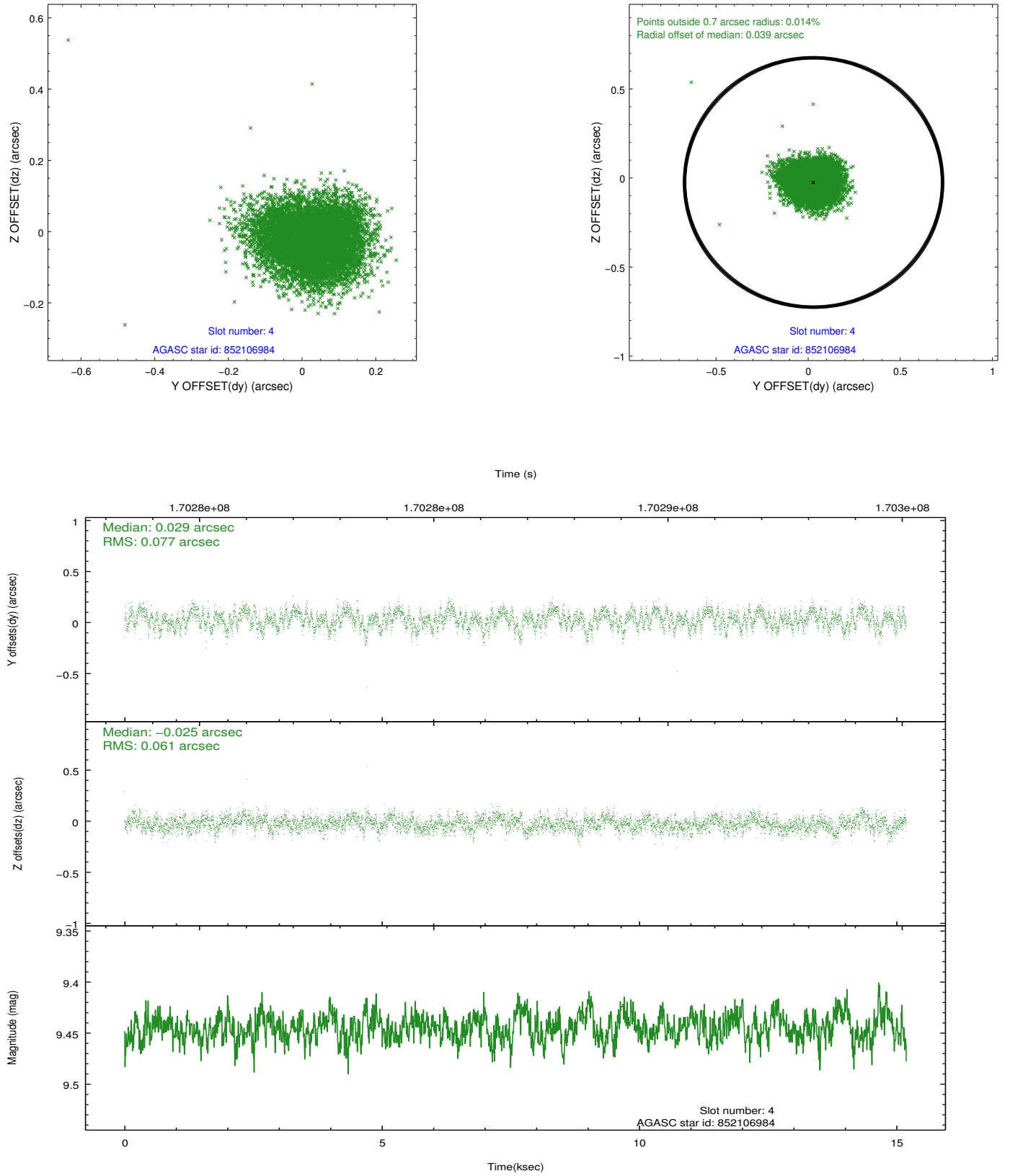
slot	status	id	mag	n_pts	med_dy	med_dz	dr1	dr2	ra	dec	mean_y	mean_z
0	FID	ACIS-I-1	7.24	3706	-0.011	0.054	0.011	0.020	0.000000	0.000000	936.38	-832.13
1	FID	ACIS-I-5	7.23	3706	-0.100	0.034	0.011	0.017	0.000000	0.000000	-1811.66	1065.18
2	FID	ACIS-I-6	7.25	3705	0.021	-0.019	0.012	0.021	0.000000	0.000000	401.62	1709.97
3	GUIDE	852100992	7.22	7411	-0.031	-0.003	0.059	0.091	84.461225	-28.937358	1430.05	606.24
4	GUIDE	852106984	9.44	7405	0.029	-0.025	0.106	0.167	85.449615	-28.768754	-1630.80	1449.39
5	GUIDE	852108824	8.15	7405	0.067	0.084	0.053	0.085	84.638223	-28.836492	768.99	527.15
6	GUIDE	851579176	9.50	7408	-0.095	-0.029	0.101	0.162	85.024532	-27.739397	-2081.86	-2468.17
7	GUIDE	851581920	7.02	7410	0.031	-0.027	0.046	0.076	85.244897	-27.952156	-2368.02	-1470.07

2.4 Star Slots

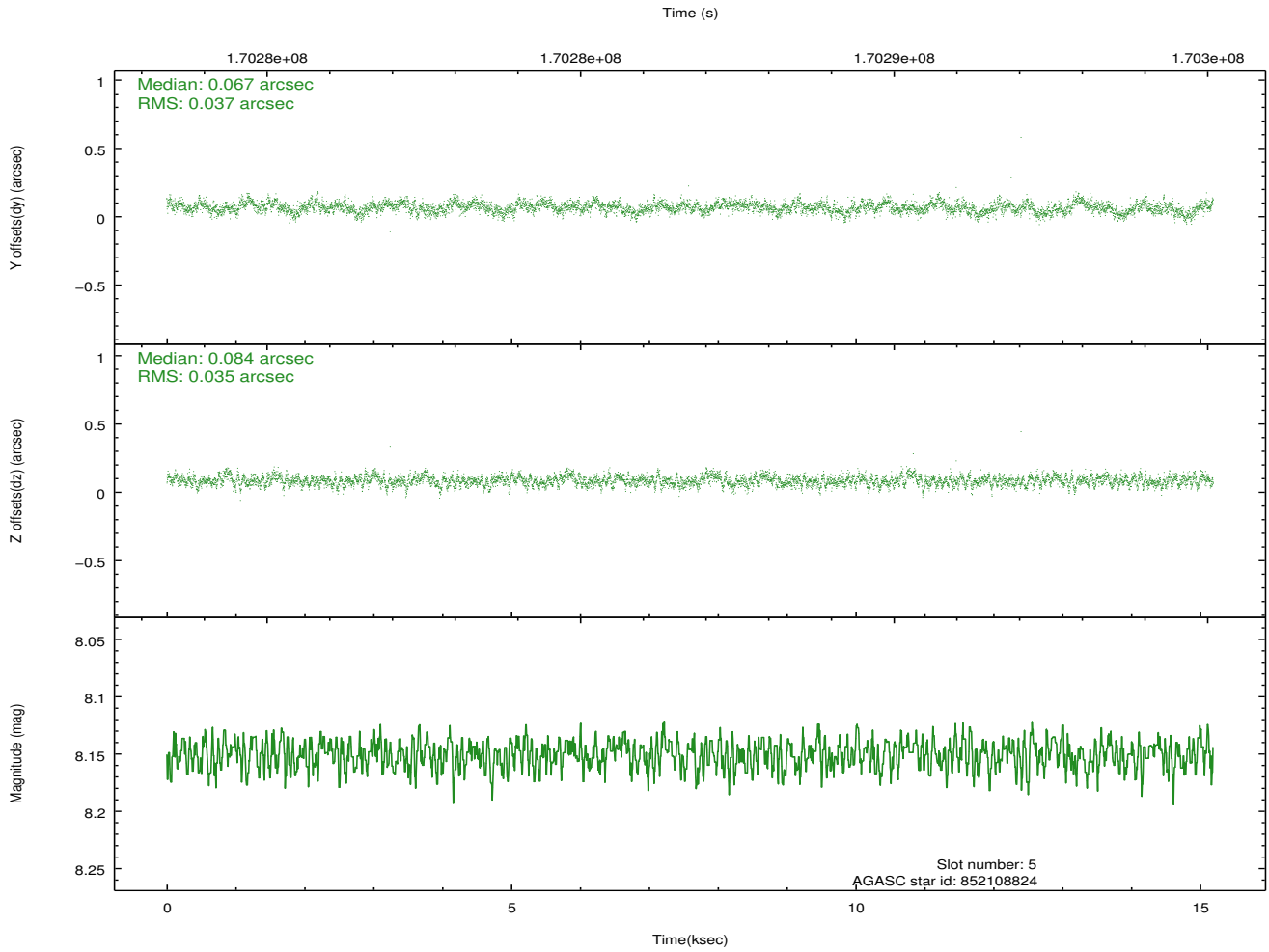
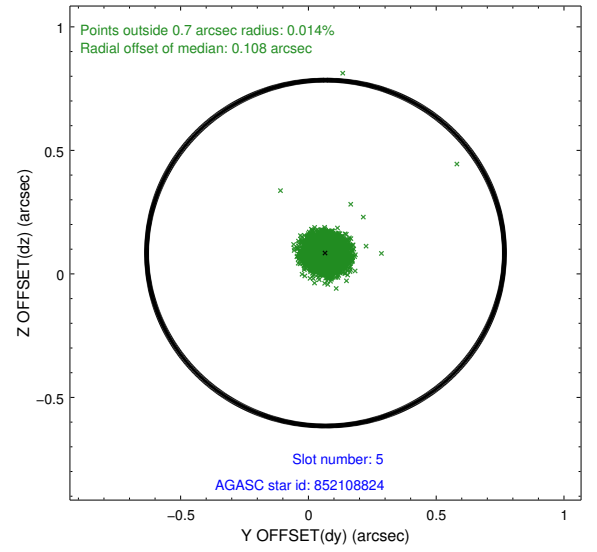
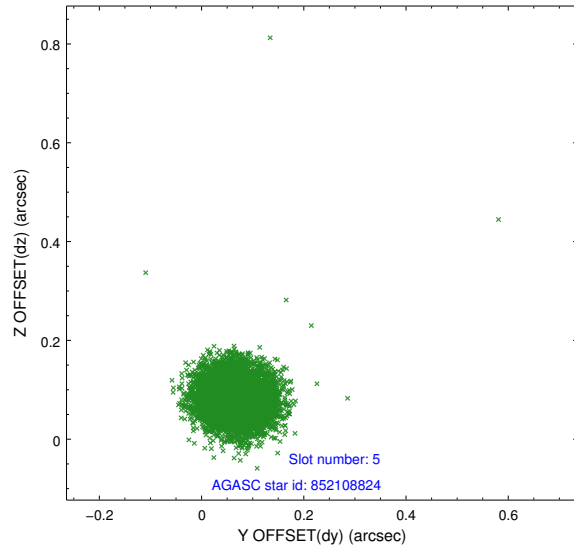
2.4.1 Slot 3



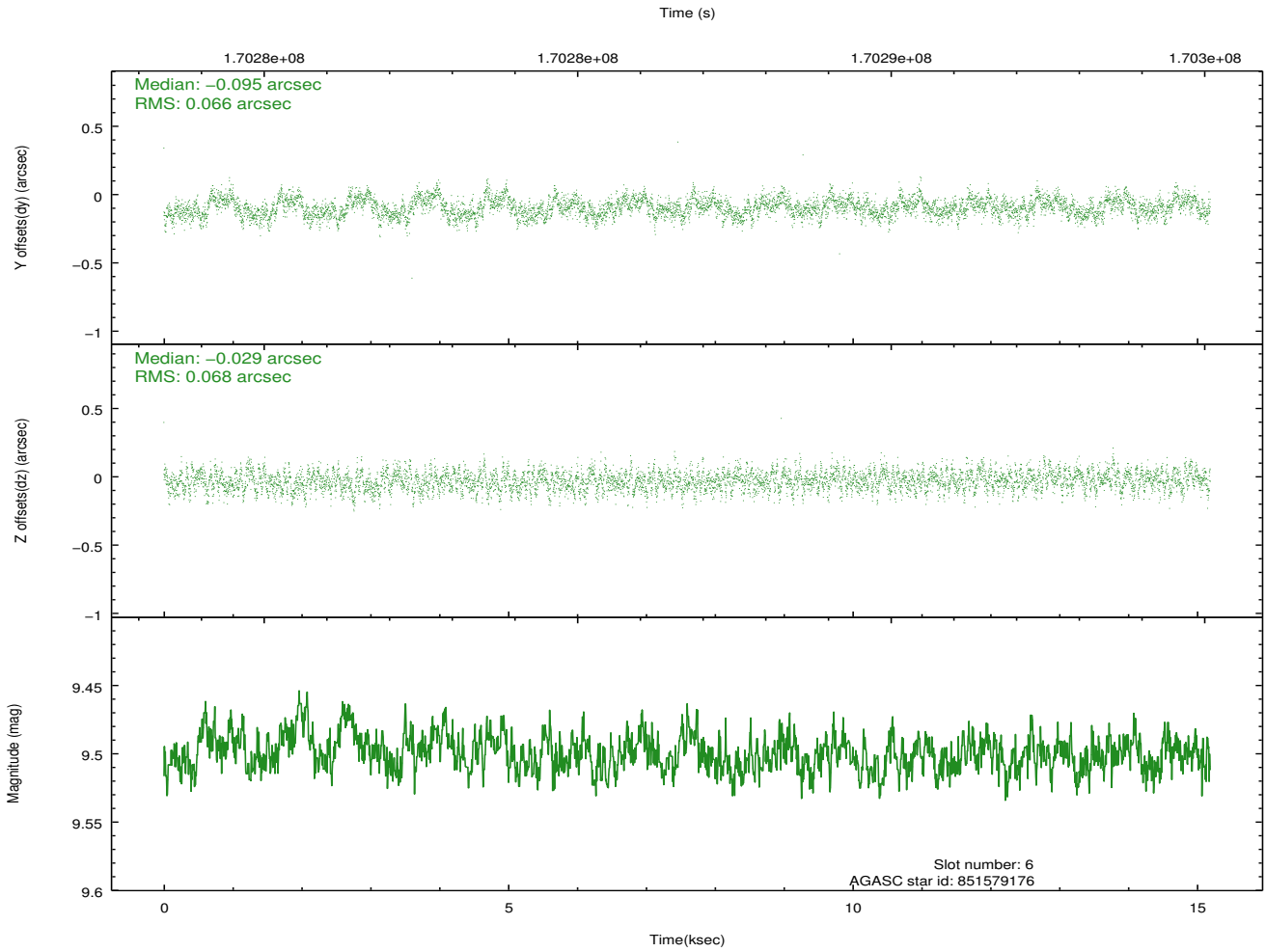
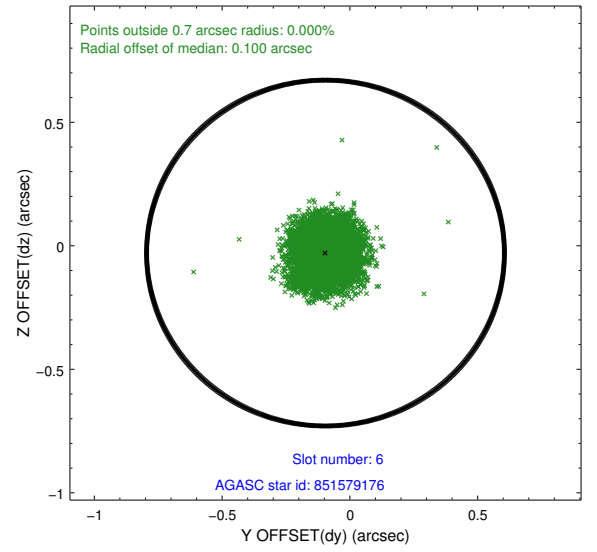
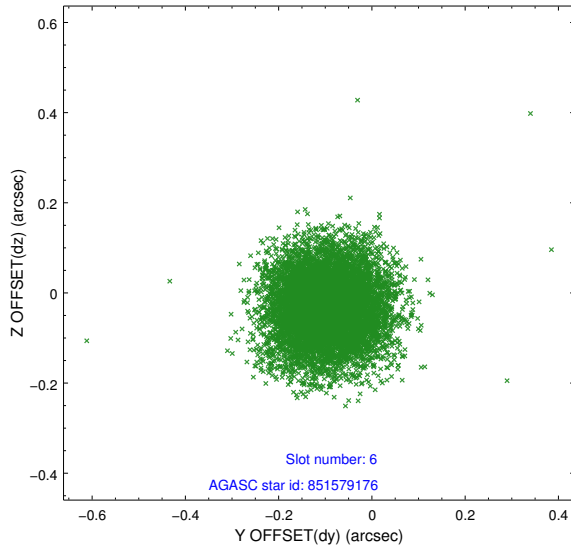
2.4.2 Slot 4



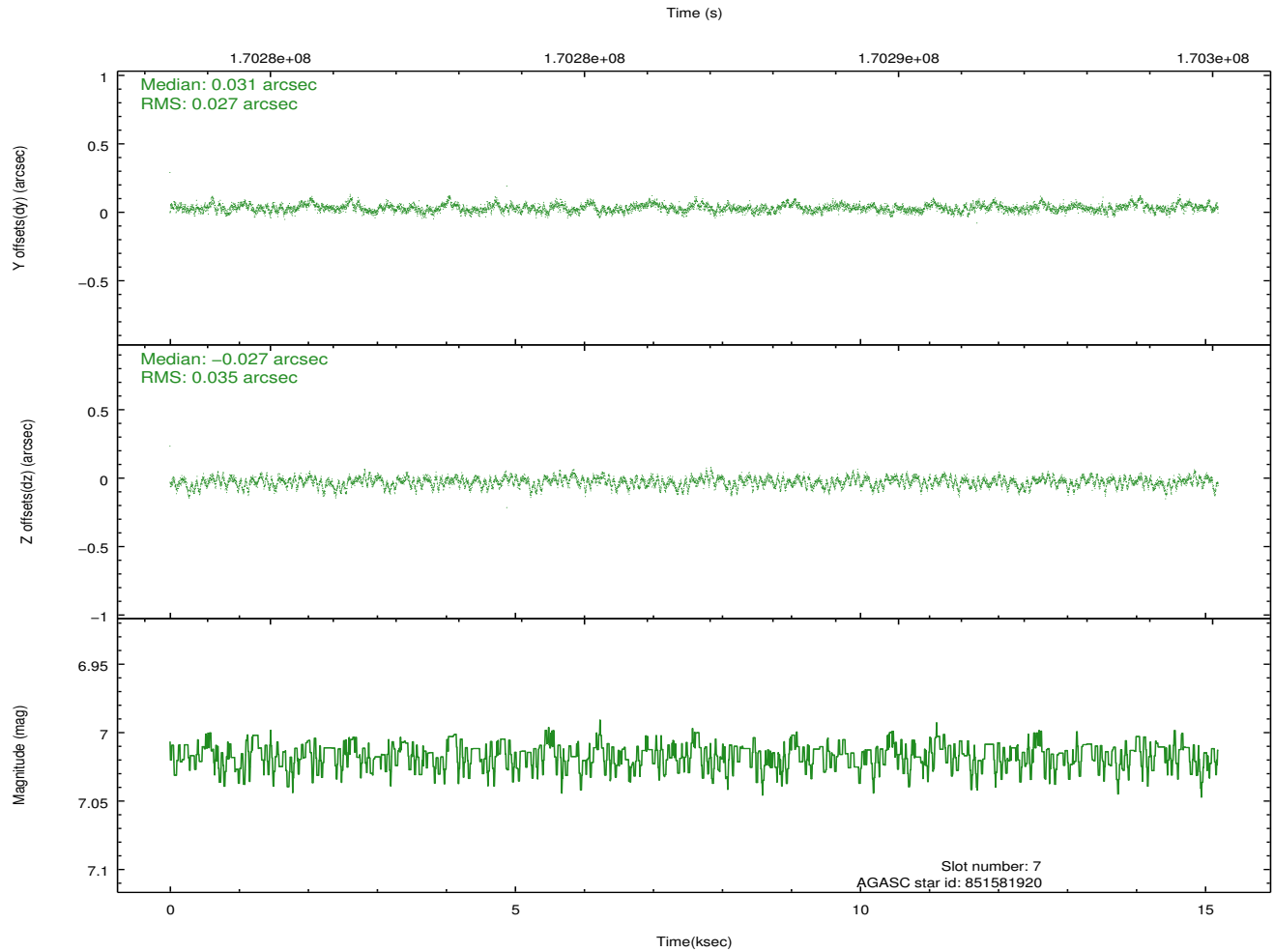
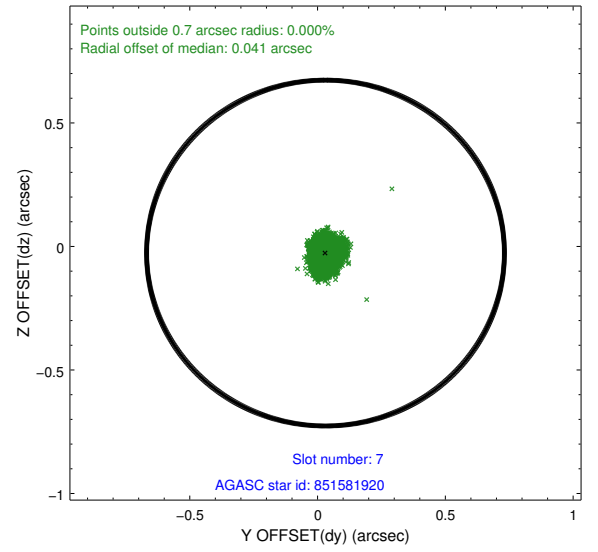
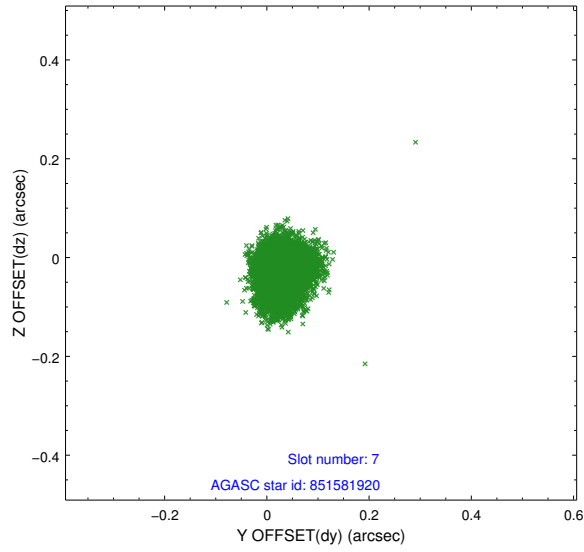
2.4.3 Slot 5



2.4.4 Slot 6

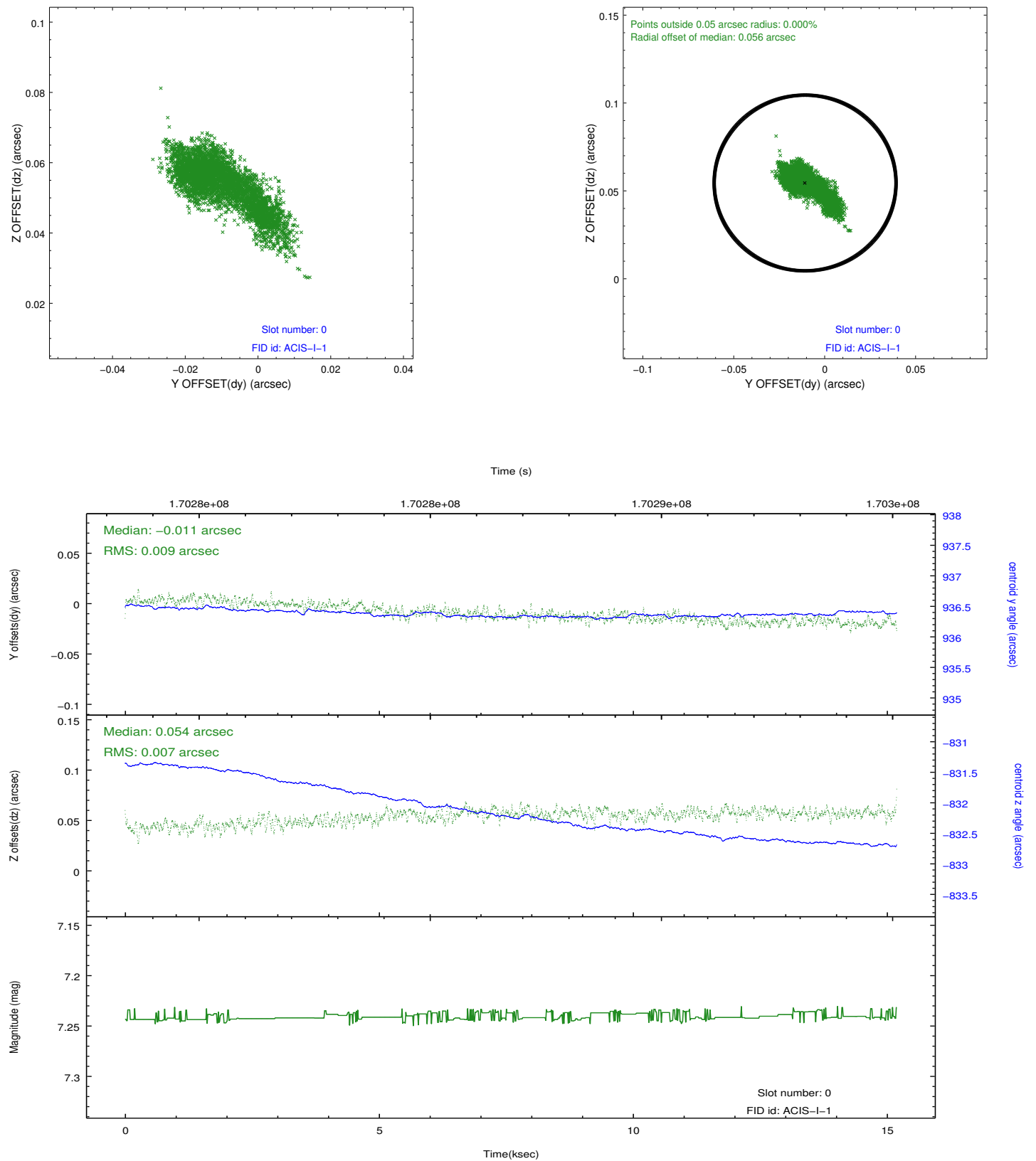


2.4.5 Slot 7

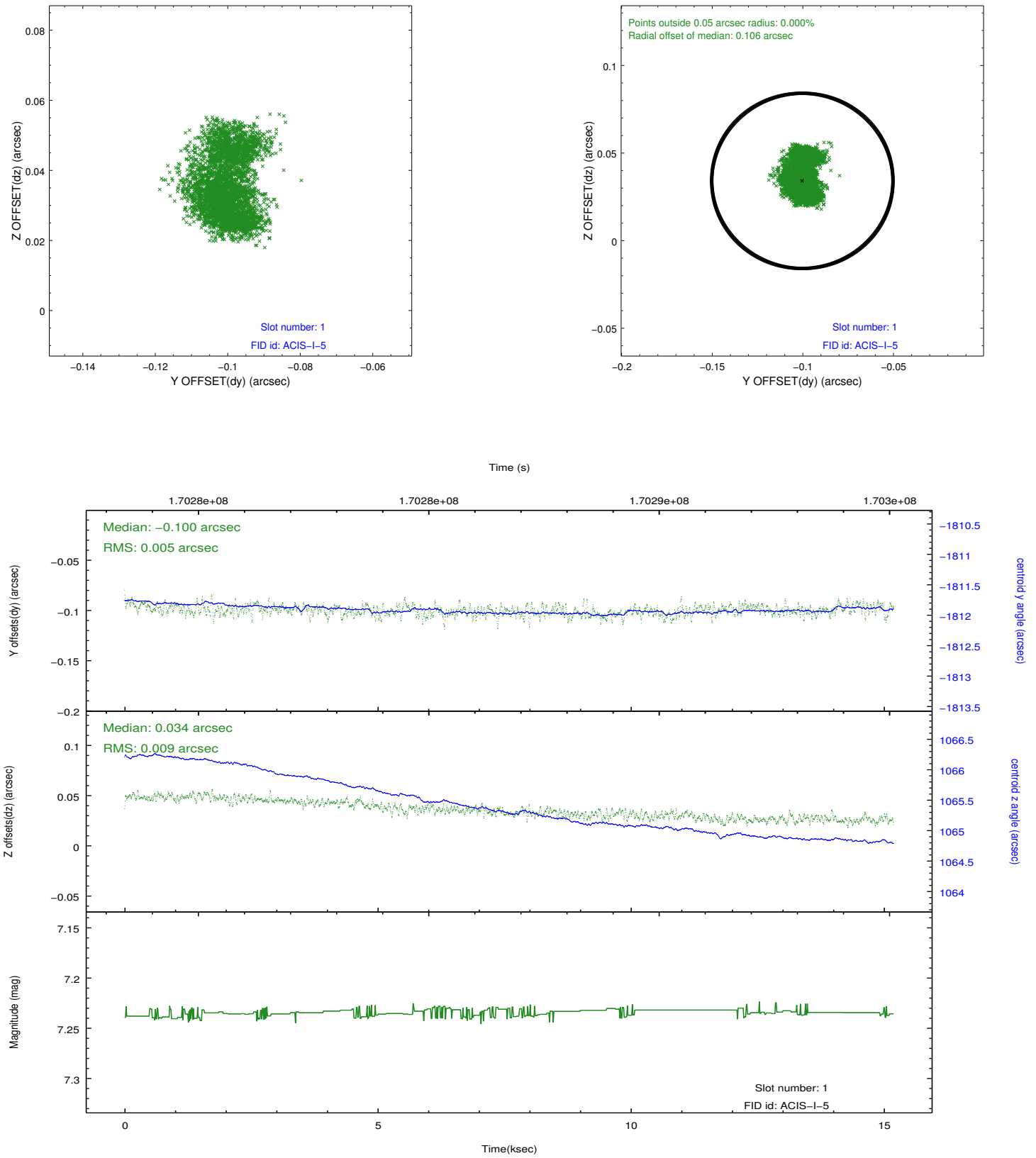


2.5 FID Slots

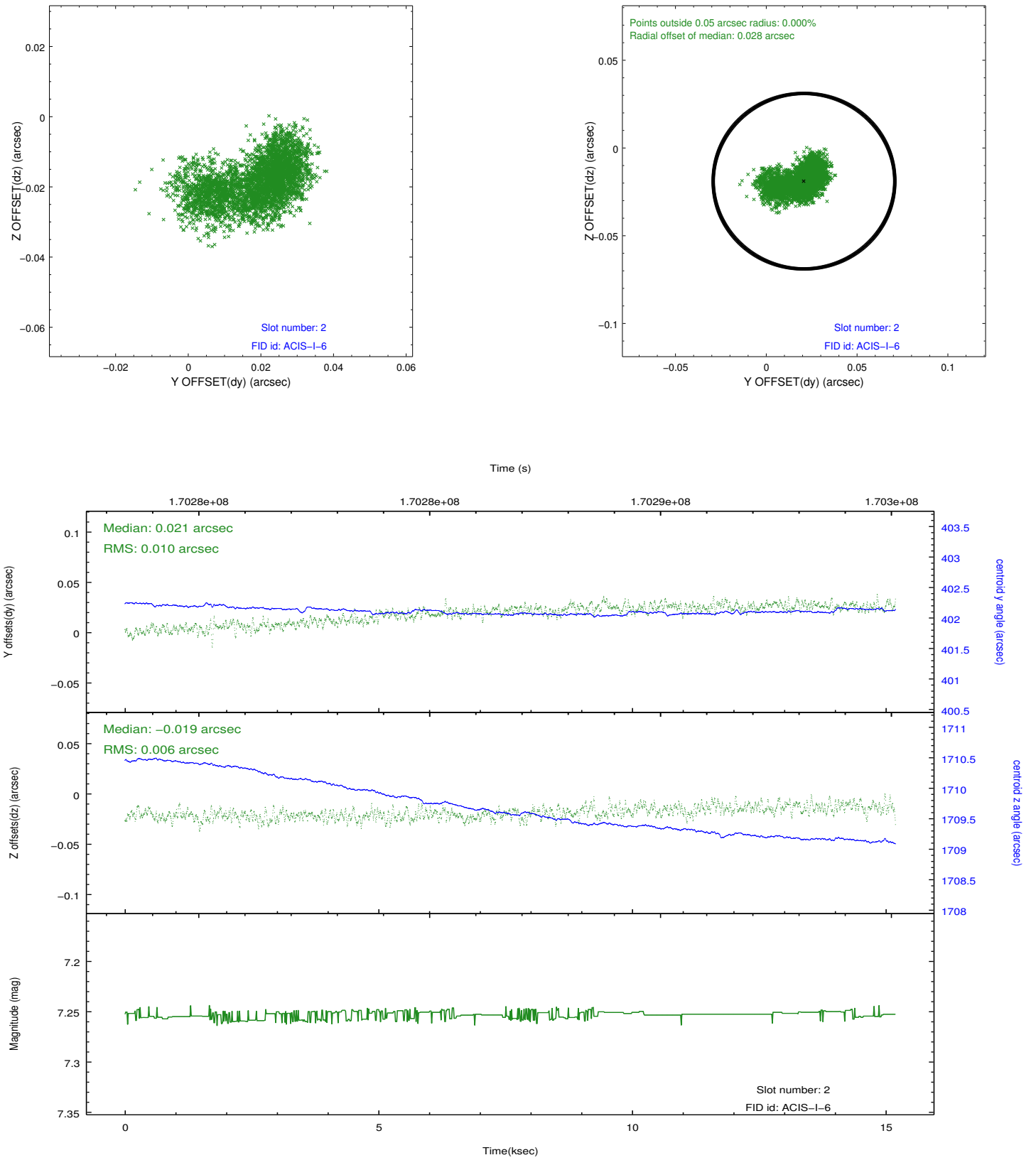
2.5.1 Slot 0



2.5.2 Slot 1



2.5.3 Slot 2



A Summary

A.1 Status

V&V Scientist	Jen Lauer
V&V Date (YYYY-MM-DD)	2012.11.15
V&V Edition	1
V&V Disposition and Status	OK
V&V Charge Time	14.969

A.2 Comments