

V&V Reference Report

L2 ASCDS Version : 8.4.5

Observation 4268 - L2 Version 3
Chandra X-Ray Center

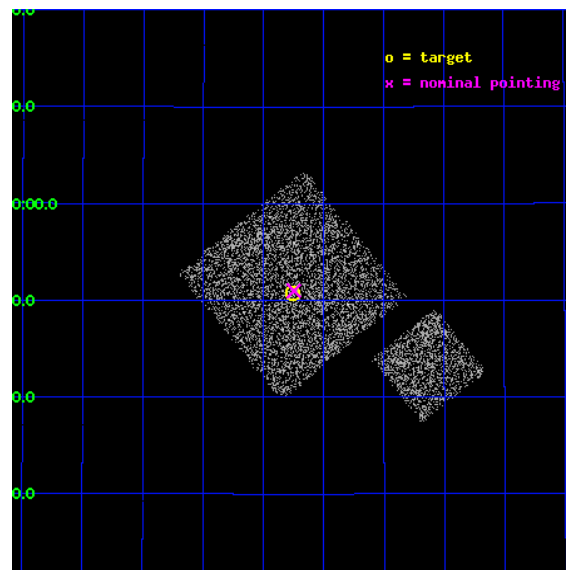
L2 Processing Date : Oct 24 2012

Contents

1	Front	2
2	OBI	3
2.1	OBI	3
2.1.1	Images	3
2.1.2	Bias	3
2.1.3	Parameters	4
2.1.4	Events	4
2.2	Compared Parameters	5
2.3	Aspect	6
2.4	Star Slots	9
2.4.1	Slot 3	9
2.4.2	Slot 4	10
2.4.3	Slot 5	11
2.4.4	Slot 6	12
2.4.5	Slot 7	13
2.5	FID Slots	14
2.5.1	Slot 0	14
2.5.2	Slot 1	15
2.5.3	Slot 2	16
A	Summary	17
A.1	Status	17
A.2	Comments	17

1 Front

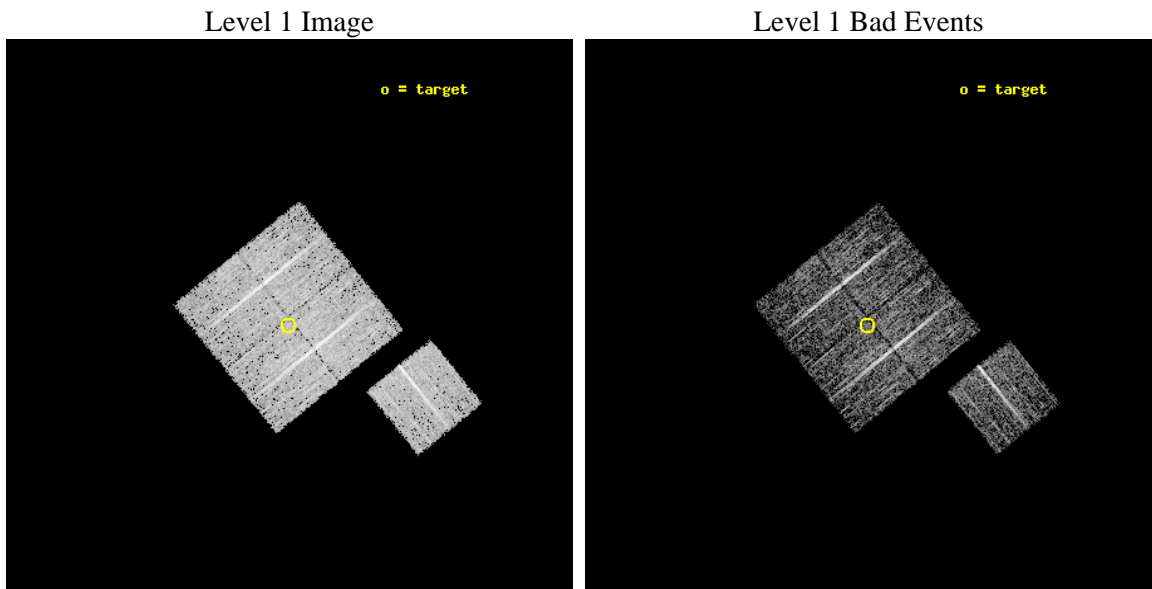
seq_num	900311	Sequence number
obs_id	4268	Observation id
title	A CHANDRA WIDE-FIELD SURVEY TO MAP THE COSMIC WEB AND INVESTIGATE THE EVOLUTION OF NUCLEAR ACCRETION	Proposal title
observer	Dr. Christine Jones	Principal investigator
object	SS11	Source name
dtcycle	0	
cycle	P	events from which exps? Prim/Second/Both
ra_targ	216.314346	Observer's specified target RA [deg]
dec_targ	32.845836	Observer's specified target Dec [deg]
ra_nom	216.3118012245	Nominal RA [deg]
dec_nom	32.849884708046	Nominal Dec [deg]
roll_nom	141.01013777144	Nominal Roll [deg]
revision	3	Processing version of data
ontime	4770.4344167709	Sum of GTIs [s]
livetime	4708.1051791731	Livetime [s]
ontime0	4776.5932772458	Sum of GTIs [s]
ontime1	4776.6343172491	Sum of GTIs [s]
ontime2	4770.3933768272	Sum of GTIs [s]
ontime3	4770.4344167709	Sum of GTIs [s]
ontime6	4776.5522372425	Sum of GTIs [s]
l2events	9720	Number of level 2 events



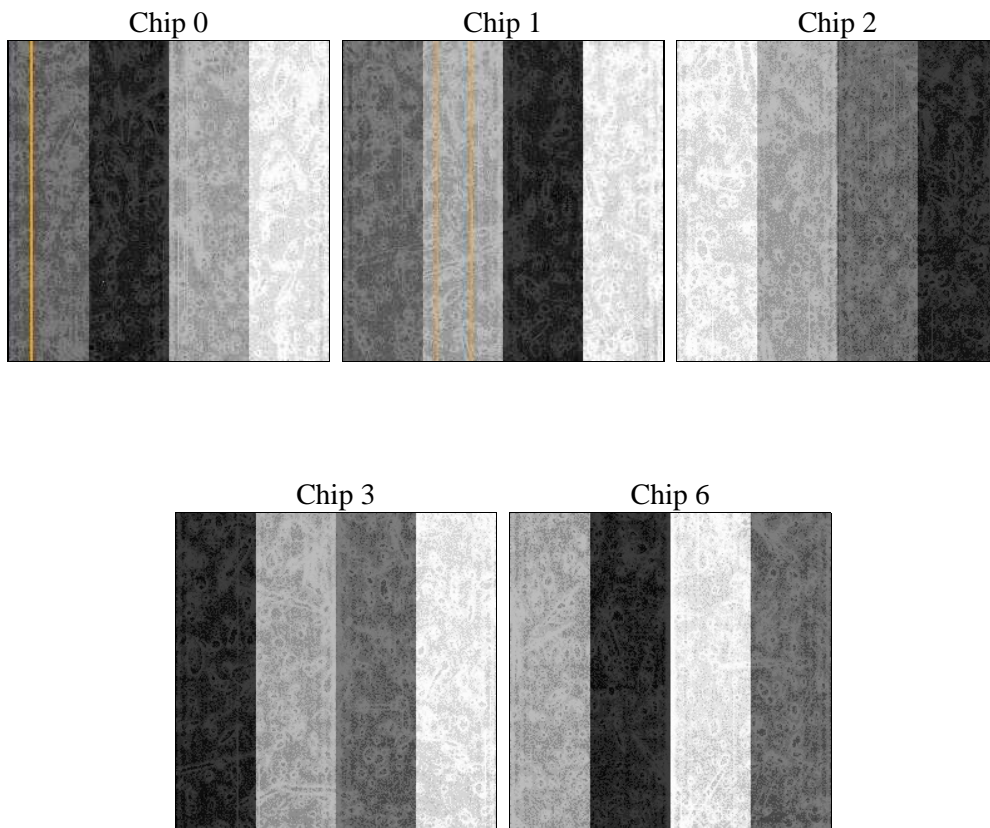
2 OBI

2.1 OBI

2.1.1 Images



2.1.2 Bias



2.1.3 Parameters

obi_num	0	Obi number	sched_exp_time	5000.000000	[s] Scheduled observation exposure time
ascdsver	8.4.5	Processing system revision	ontime	4770.4344167709	Sum of GTIs [s]
caldsver	4.5.2	 	ontime0	4776.5932772458	Sum of GTIs [s]
date	2012-10-24T20:38:43	Date and time of file creation	ontime1	4776.6343172491	Sum of GTIs [s]
revision	3	Processing version of data	ontime2	4770.3933768272	Sum of GTIs [s]
			ontime3	4770.4344167709	Sum of GTIs [s]
			ontime6	4776.5522372425	Sum of GTIs [s]
			l1events	120839	Number of level 1 events

2.1.4 Events

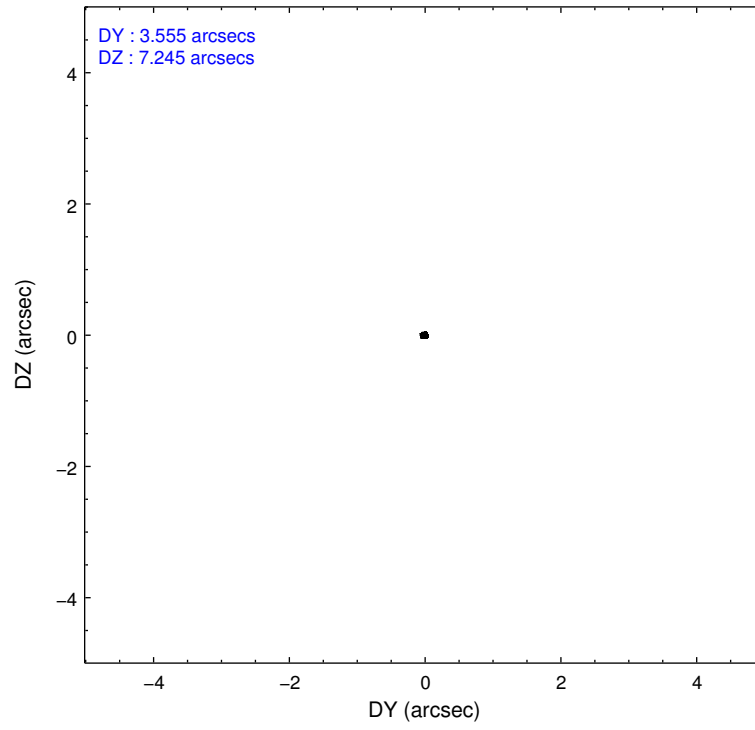
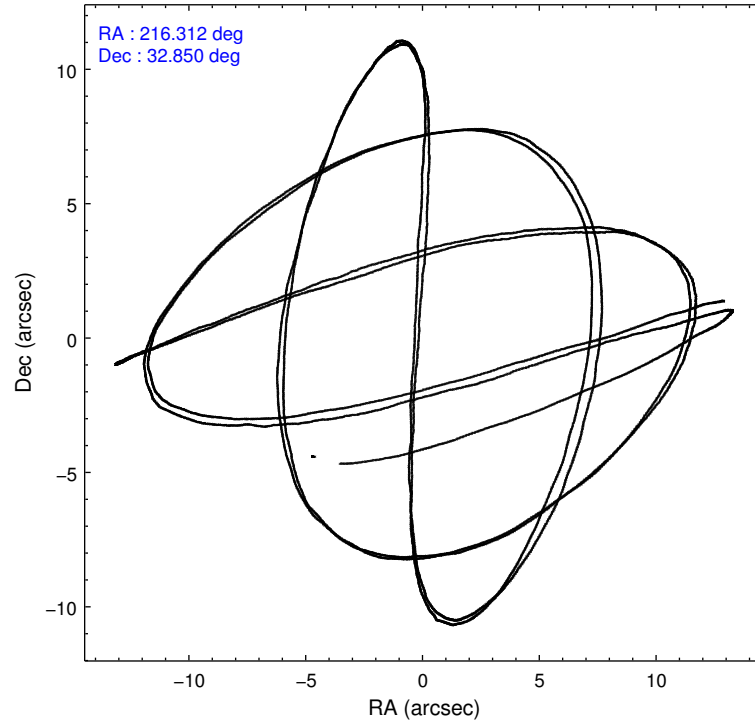
	ccd 0	ccd 1	ccd 2	ccd 3	ccd 6
level 1 events	23773	21912	26214	24545	24395
rejected events	21373	19420	23808	22269	21938
rejected %	89%	88%	90%	90%	89%

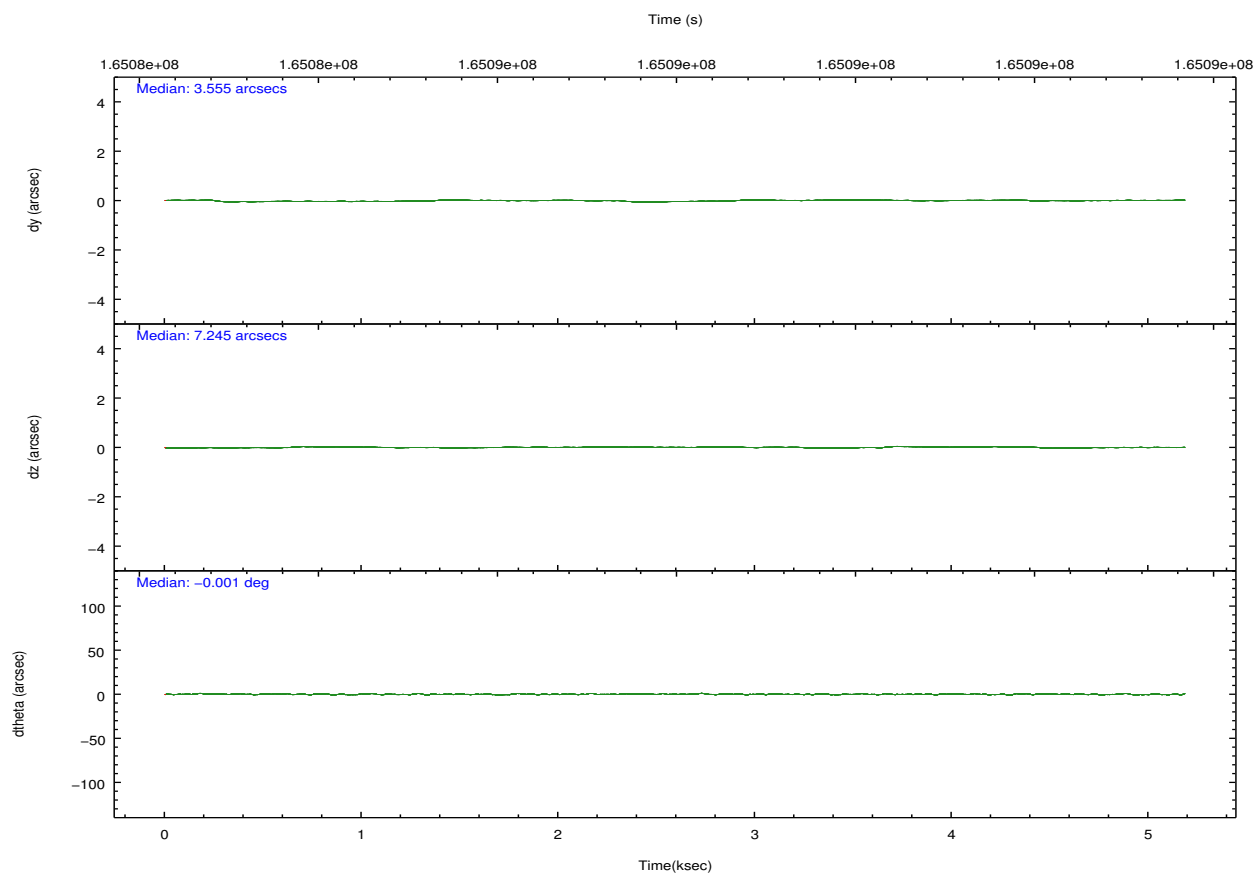
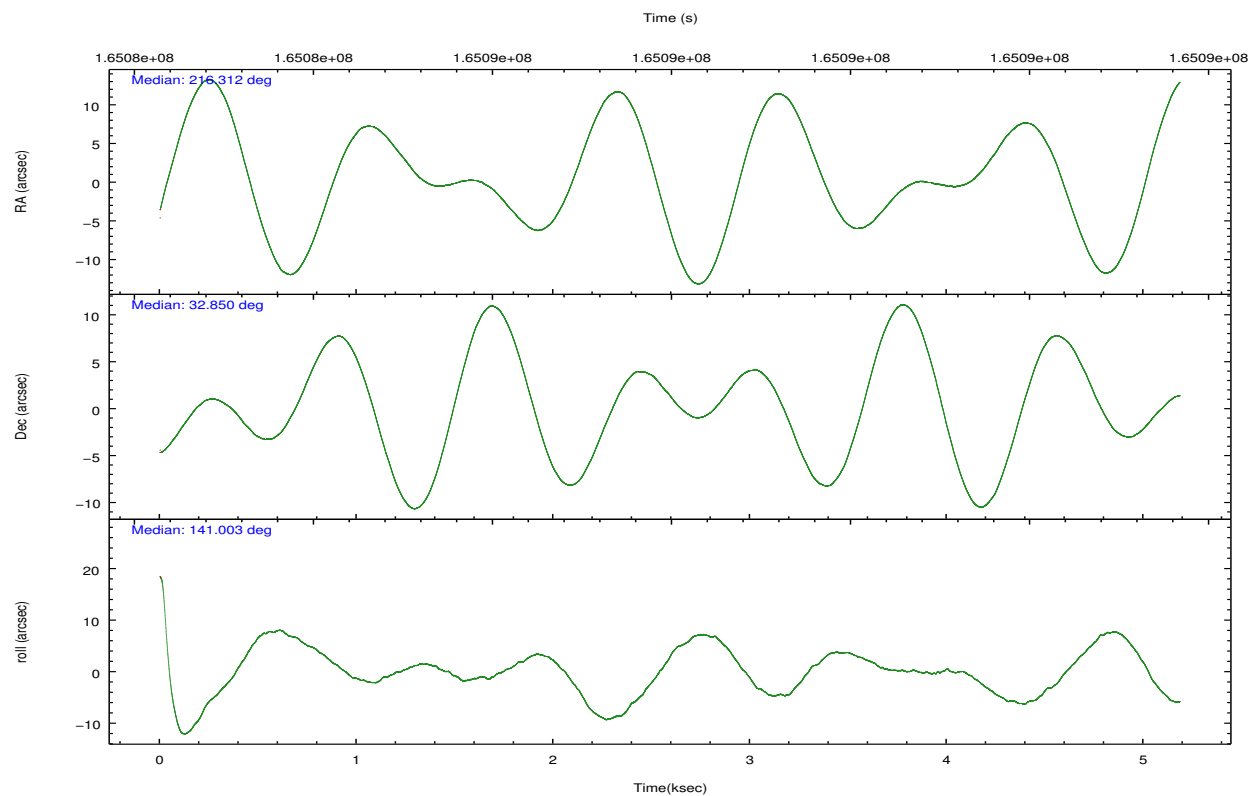
	ccd 0	ccd 1	ccd 2	ccd 3	ccd 6
grade 0 events	851	907	917	880	938
	3%	4%	3%	3%	3%
grade 1 events	11	8	13	13	8
	0%	0%	0%	0%	0%
grade 2 events	534	534	559	444	469
	2%	2%	2%	1%	1%
grade 3 events	291	300	266	261	298
	1%	1%	1%	1%	1%
grade 4 events	281	276	285	254	278
	1%	1%	1%	1%	1%
grade 5 events	696	788	661	775	783
	2%	3%	2%	3%	3%
grade 6 events	445	480	382	439	475
	1%	2%	1%	1%	1%
grade 7 events	20664	18619	23131	21479	21146
	86%	84%	88%	87%	86%

2.2 Compared Parameters

Parameter	Planned	Actual	Parameter	Planned	Actual
Instrument	ACIS	ACIS	Obspar format version number	7	7
Detector	ACIS-01236	ACIS-01236	Obspar file type	PREDICTED	ACTUAL
Grating	NONE	NONE	Obspar update status	NONE	UPDATED
Data mode	VFAINT	VFAINT	Number of optional ACIS chips dropped	0	0
Observation mode	POINTING	POINTING	On-chip summing requested	N	N
[deg] Pointing RA	216.343970	216.3118012245035	Subarray requested	NONE	NONE
[deg] Pointing Dec	32.845757	32.8498847080464	Alternating exposures requested	N	N
[deg] Pointing Roll	140.783932	141.0101377714402	[s] Primary exposure time	0.000000	3.1
[mm] SIM focus pos	-0.782348	-0.7809083437167272			
[mm] SIM defocus	0	0.001439871863259334			
[mm] SIM translation stage pos	-233.592463	-233.5874344608287			
[mm] SIM translation stage offset	0	-0.005018542100998502			
[s] Observation start time (MET)	165084589.184000	165084213.69953			
Observation start date	2003-03-26T16:48:45	2003-03-26T16:43:33			
[s] Observation end time (MET)	165089589.184000	165089723.58726			
Observation end date	2003-03-26T18:12:05	2003-03-26T18:15:23			
Read mode	TIMED	TIMED			

2.3 Aspect



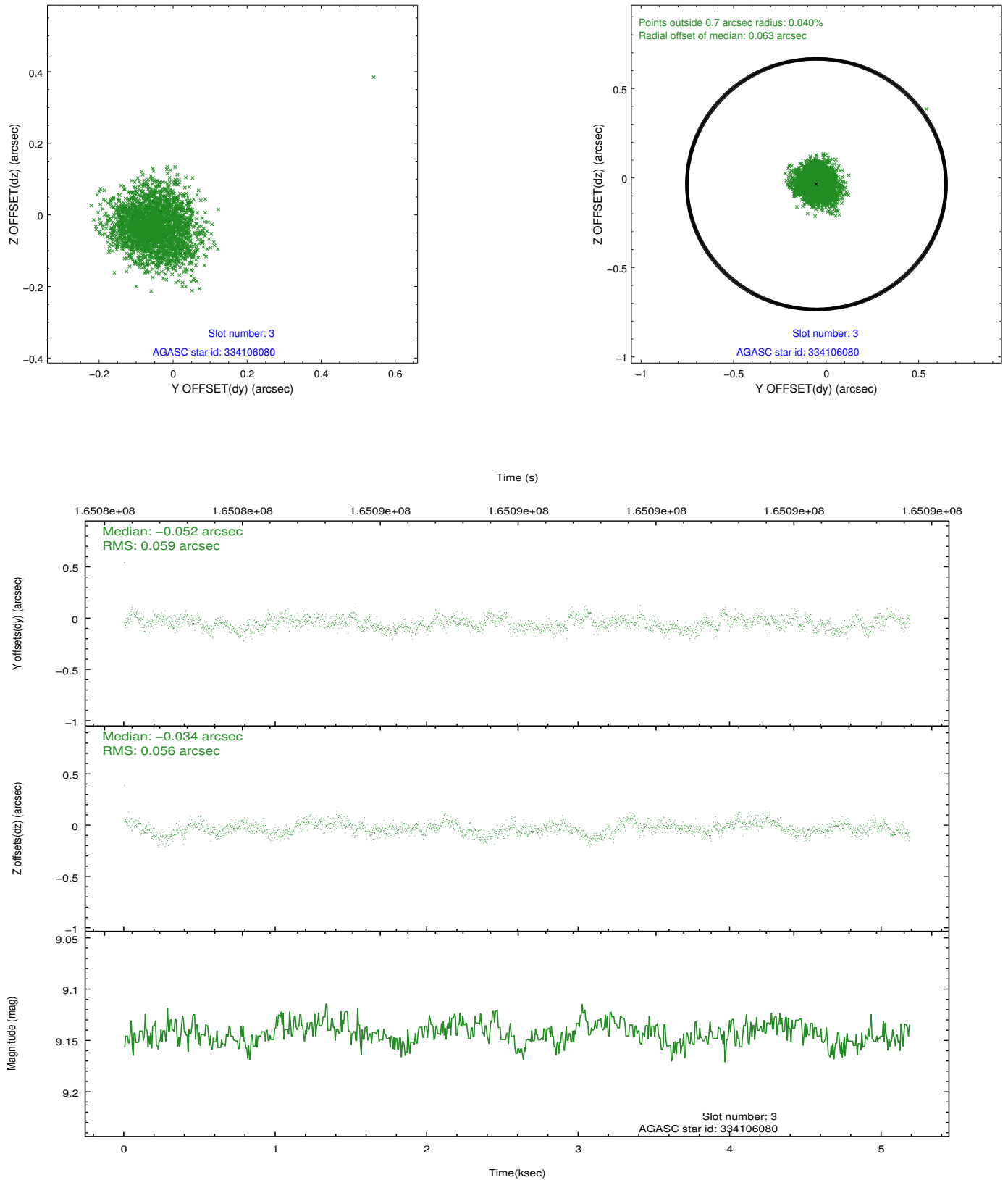


Slot Statistics

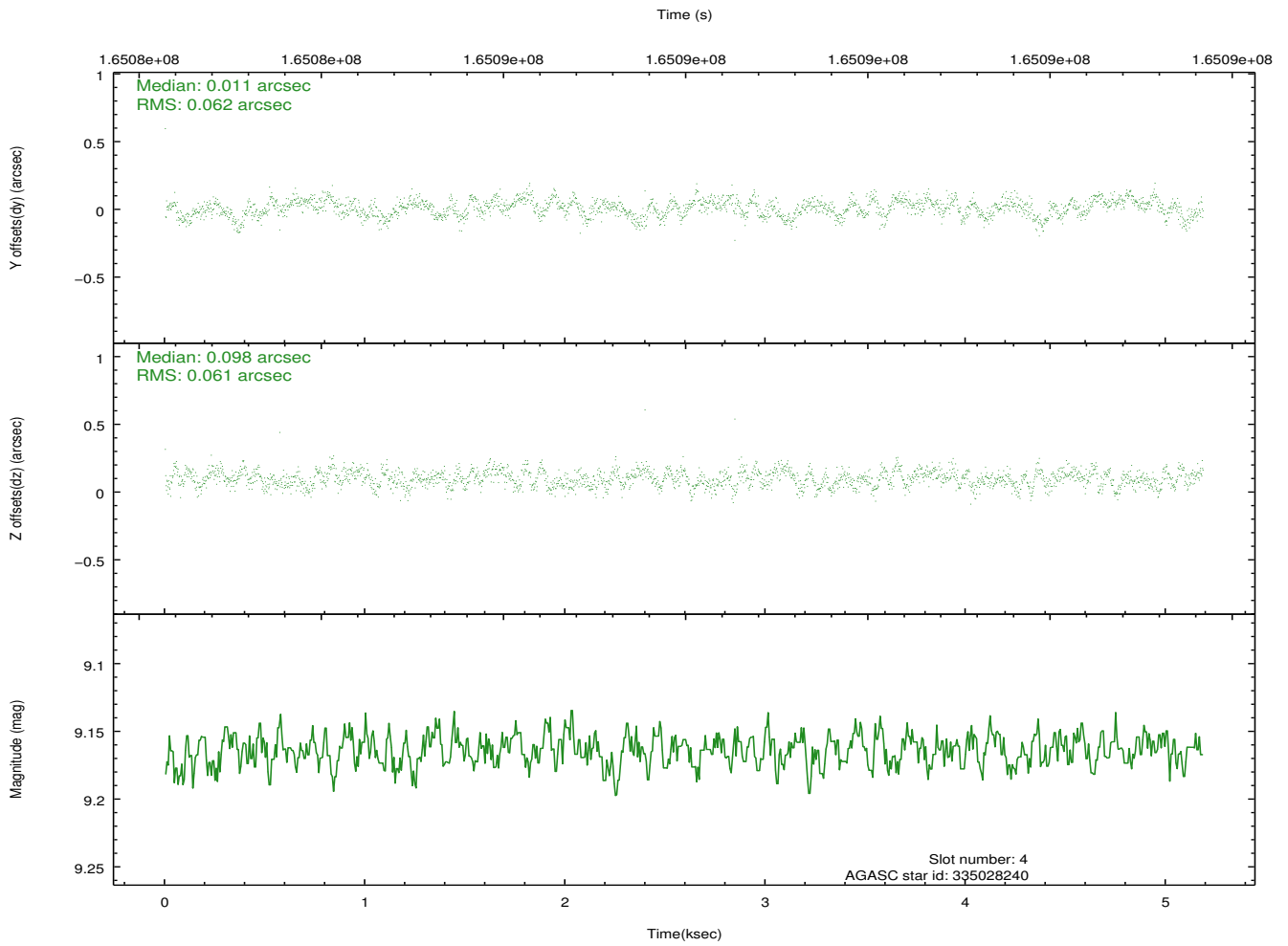
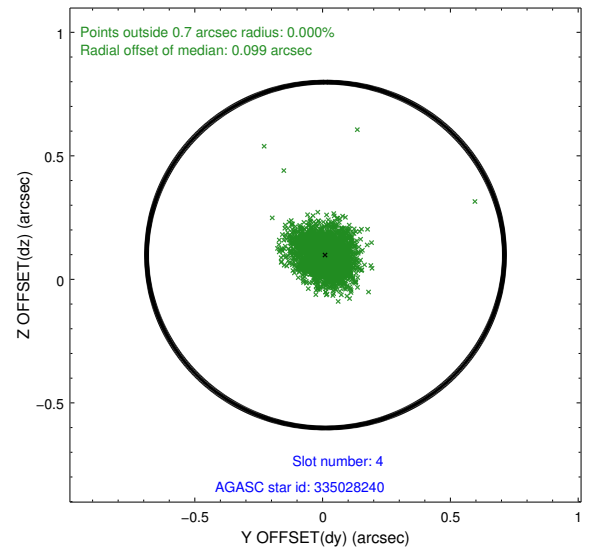
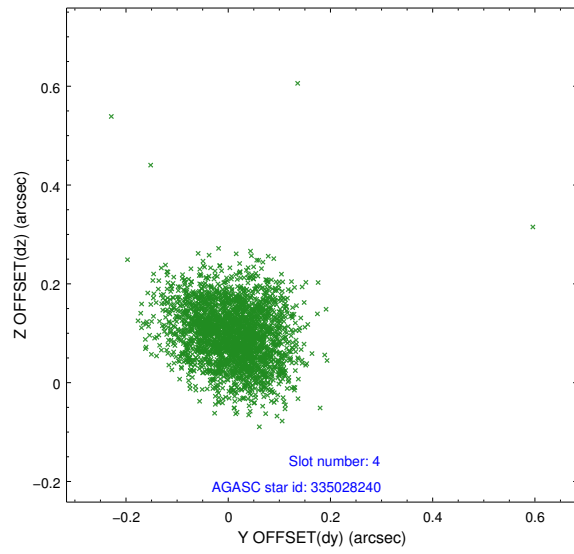
slot	status	id	mag	n_pts	med_dy	med_dz	dr1	dr2	ra	dec	mean_y	mean_z
0	FID	ACIS-I-1	7.25	1265	0.020	0.015	0.006	0.010	0.000000	0.000000	936.24	-830.64
1	FID	ACIS-I-5	7.24	1265	-0.095	0.062	0.006	0.009	0.000000	0.000000	-1811.31	1066.35
2	FID	ACIS-I-6	7.26	1265	-0.017	-0.007	0.007	0.011	0.000000	0.000000	400.52	1712.08
3	GUIDE	334106080	9.14	2529	-0.052	-0.034	0.087	0.135	215.767785	32.987168	1673.11	702.46
4	GUIDE	335028240	9.16	2528	0.011	0.098	0.090	0.145	216.746851	33.385009	292.10	-2270.80
5	GUIDE	335029368	10.17	2530	0.042	0.248	0.116	0.189	217.181018	33.065030	-1450.39	-2216.56
6	GUIDE	333710328	9.31	2529	-0.115	-0.252	0.122	0.195	215.919797	32.382995	-52.76	2103.28
7	GUIDE	334627032	9.93	2529	0.107	-0.060	0.136	0.220	216.632536	32.266744	-1997.39	1059.52

2.4 Star Slots

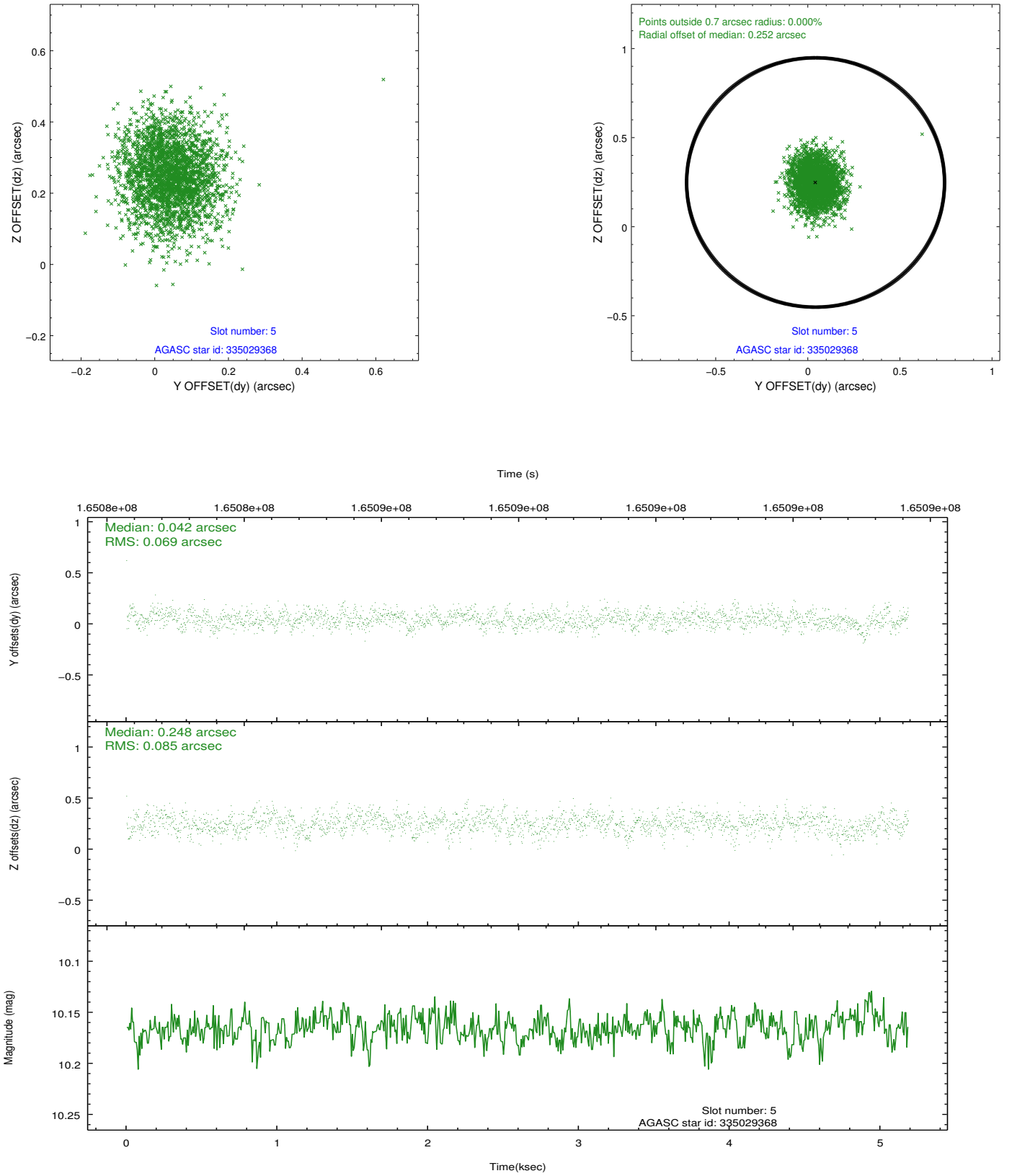
2.4.1 Slot 3



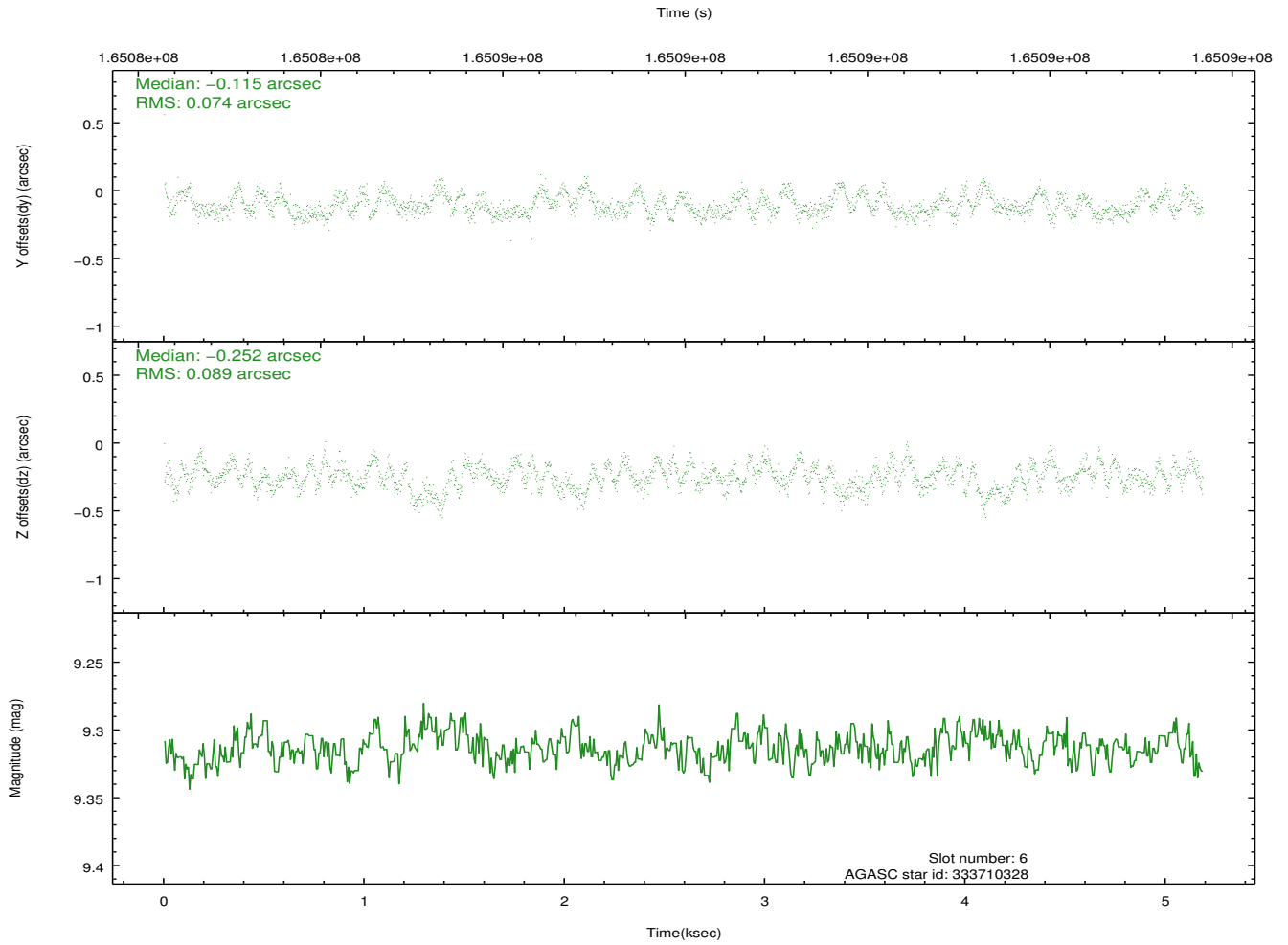
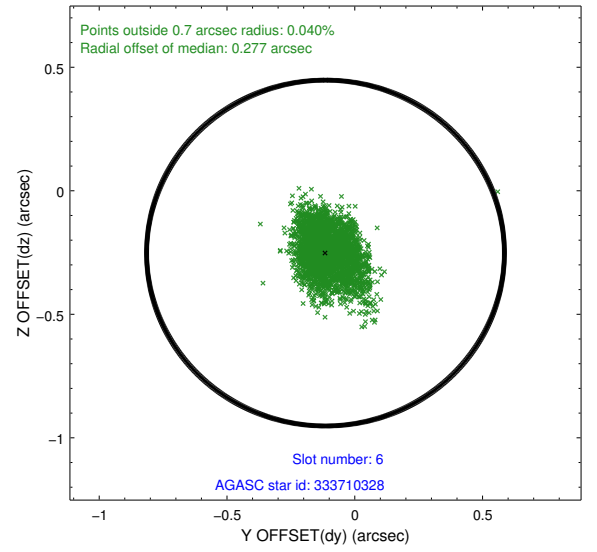
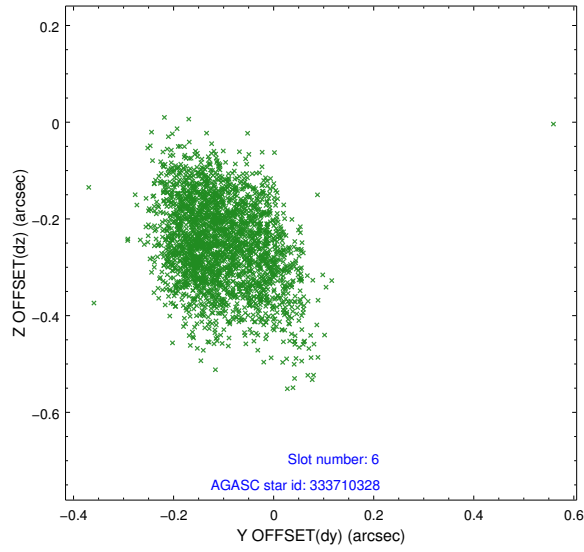
2.4.2 Slot 4



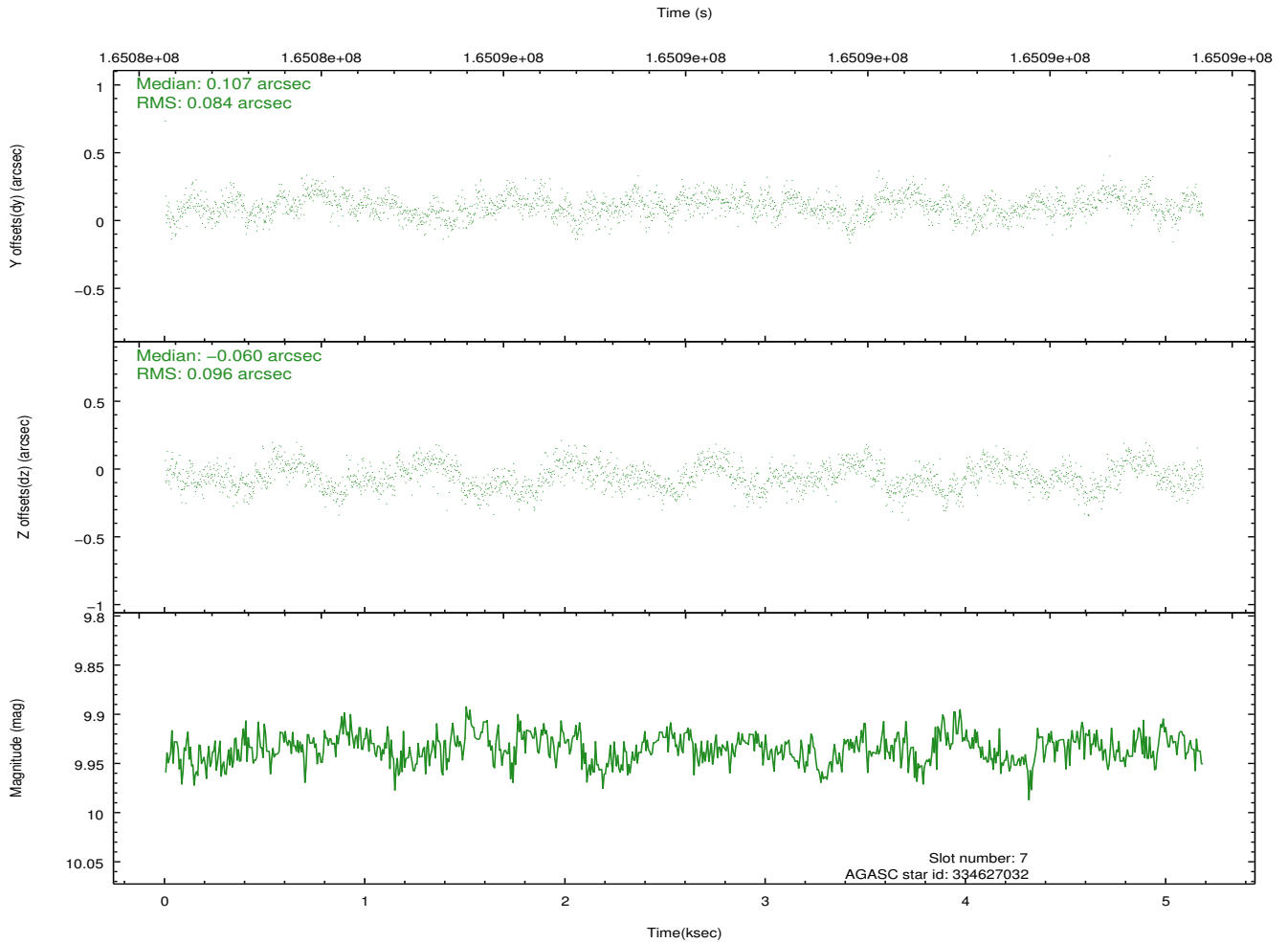
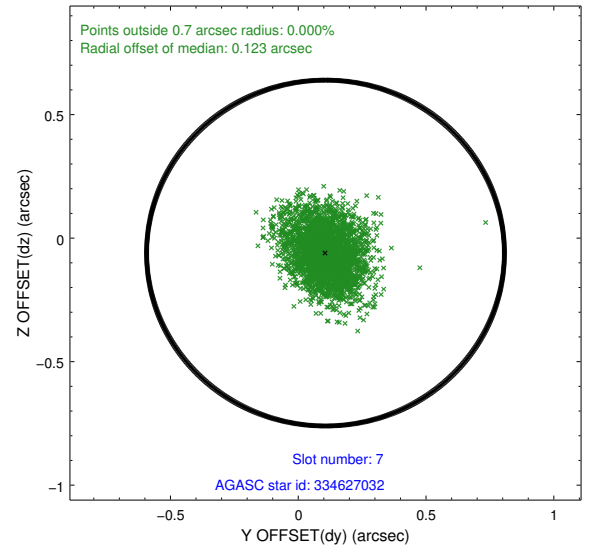
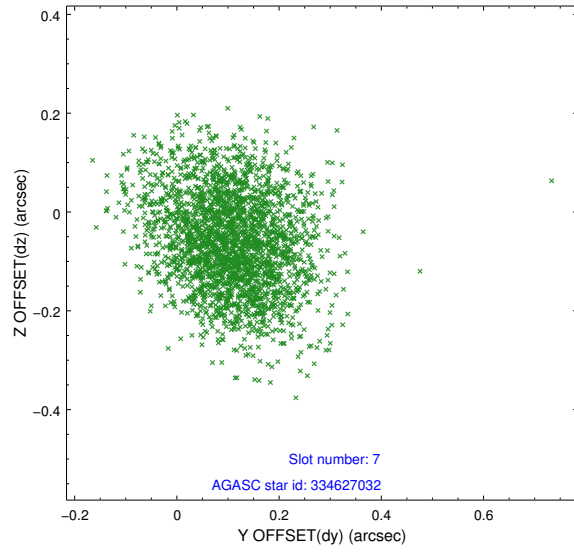
2.4.3 Slot 5



2.4.4 Slot 6

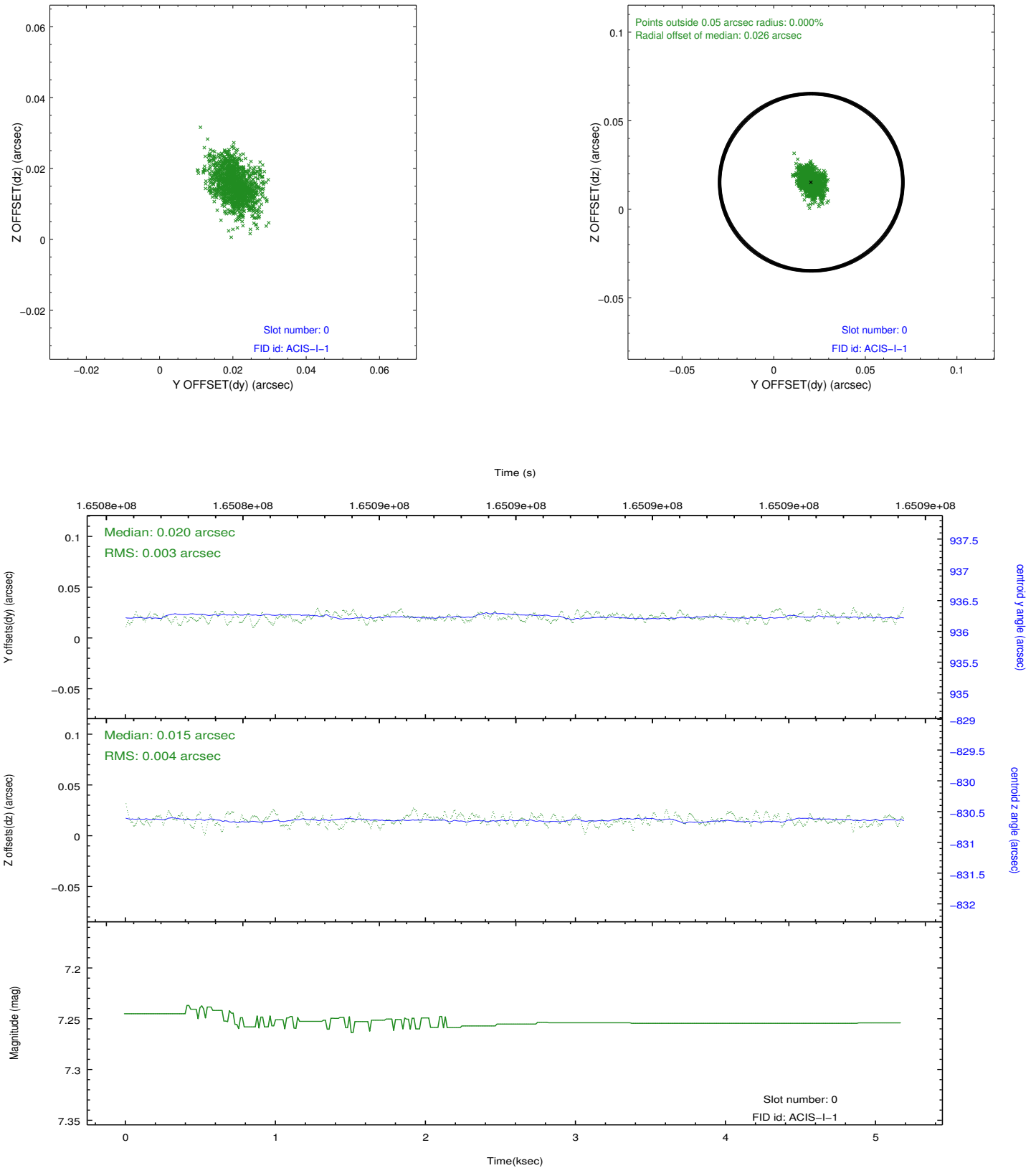


2.4.5 Slot 7

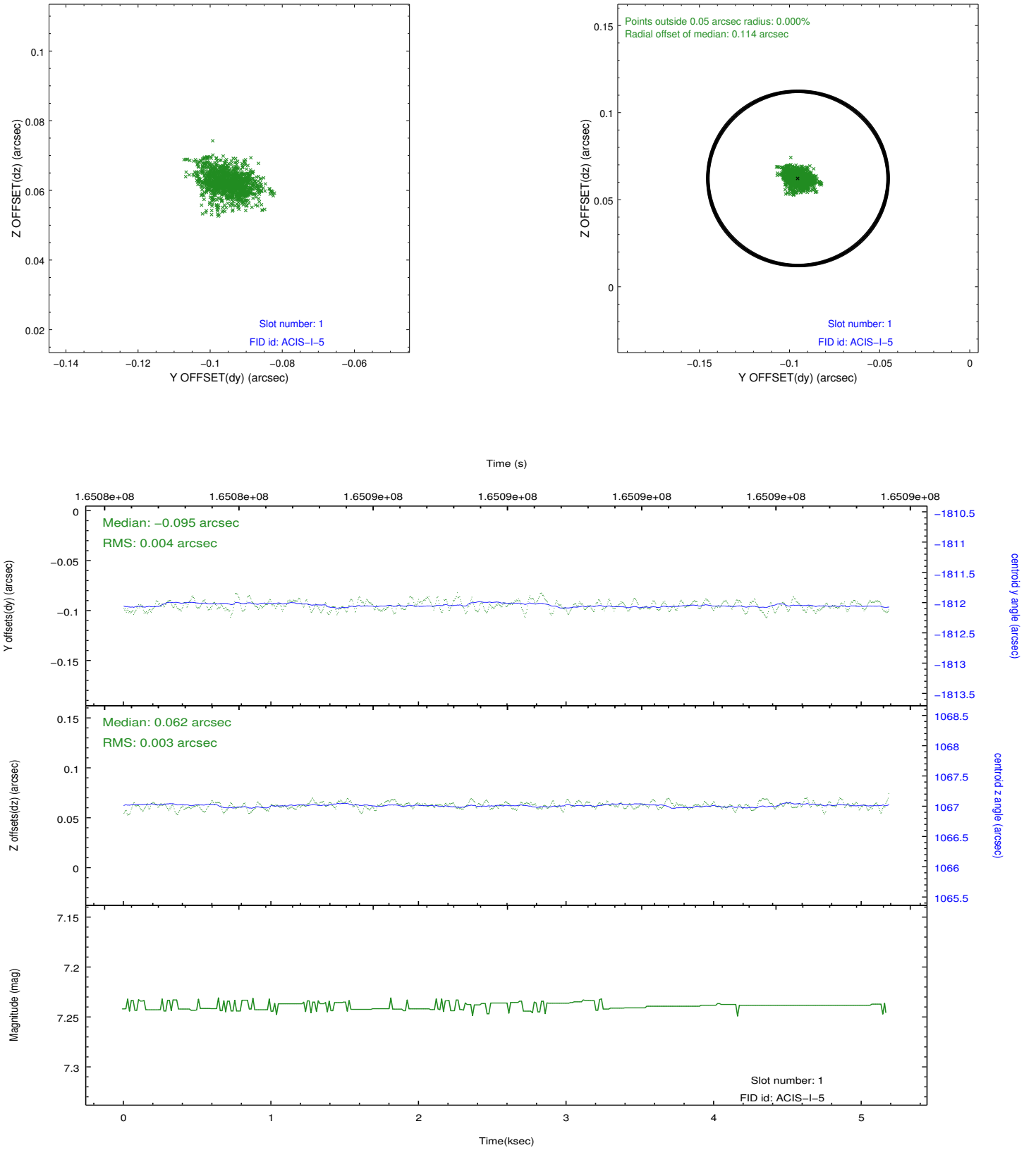


2.5 FID Slots

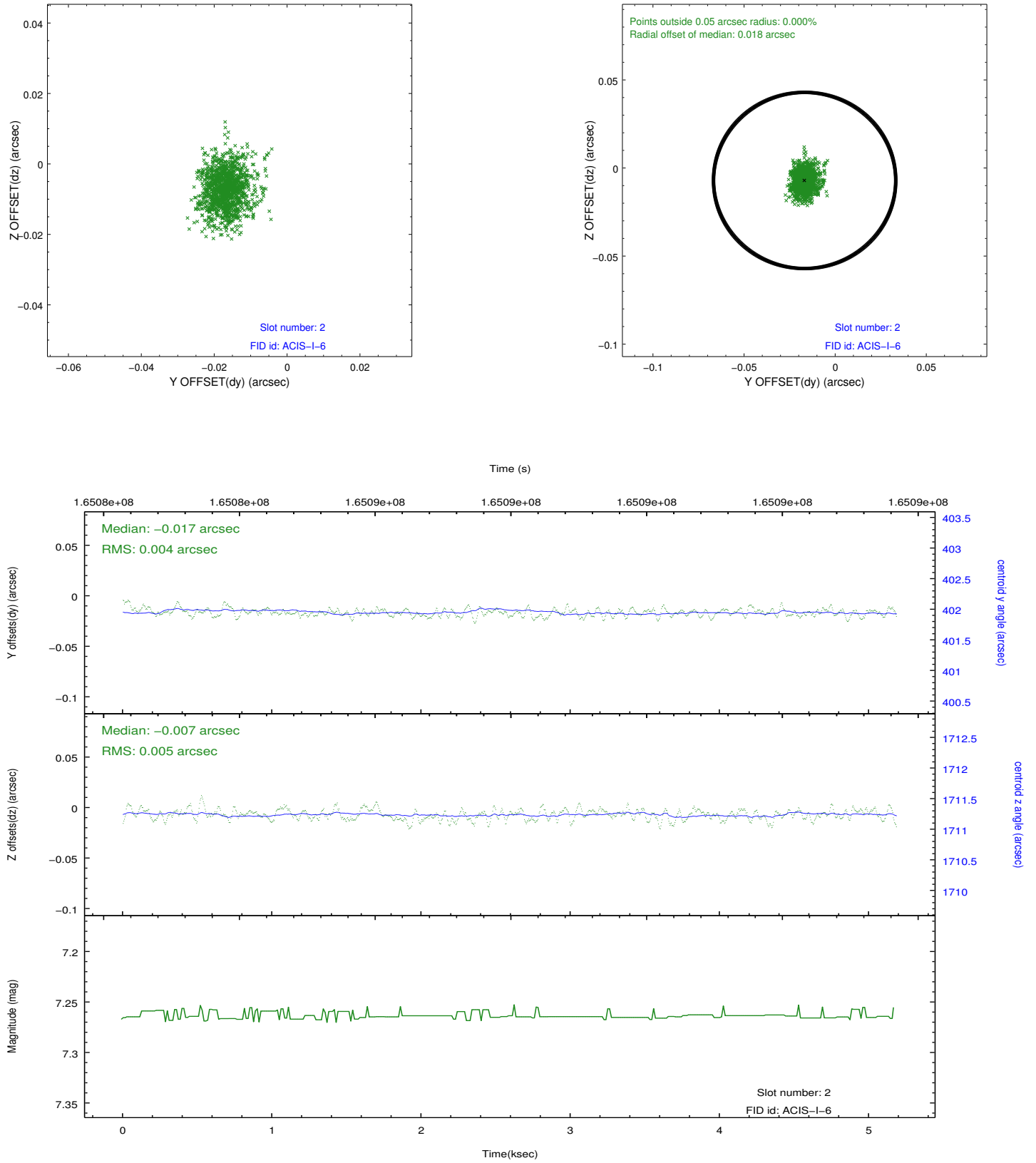
2.5.1 Slot 0



2.5.2 Slot 1



2.5.3 Slot 2



A Summary

A.1 Status

V&V Scientist	Jen Lauer
V&V Date (YYYY-MM-DD)	2012.11.08
V&V Edition	1
V&V Disposition and Status	OK
V&V Charge Time	4.77

A.2 Comments