

V&V Reference Report

L2 ASCDS Version : 8.4.5

Observation 4267 - L2 Version 3
Chandra X-Ray Center

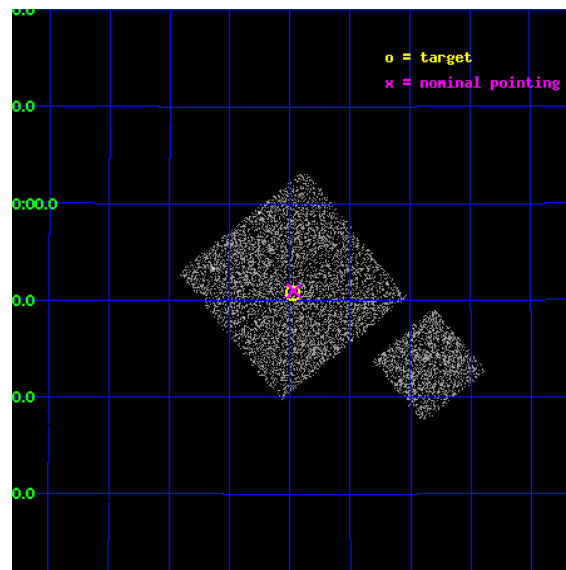
L2 Processing Date : Oct 24 2012

Contents

1	Front	2
2	OBI	3
2.1	OBI	3
2.1.1	Images	3
2.1.2	Bias	3
2.1.3	Parameters	4
2.1.4	Events	4
2.2	Compared Parameters	5
2.3	Aspect	6
2.4	Star Slots	9
2.4.1	Slot 3	9
2.4.2	Slot 4	10
2.4.3	Slot 5	11
2.4.4	Slot 6	12
2.4.5	Slot 7	13
2.5	FID Slots	14
2.5.1	Slot 0	14
2.5.2	Slot 1	15
2.5.3	Slot 2	16
A	Summary	17
A.1	Status	17
A.2	Comments	17

1 Front

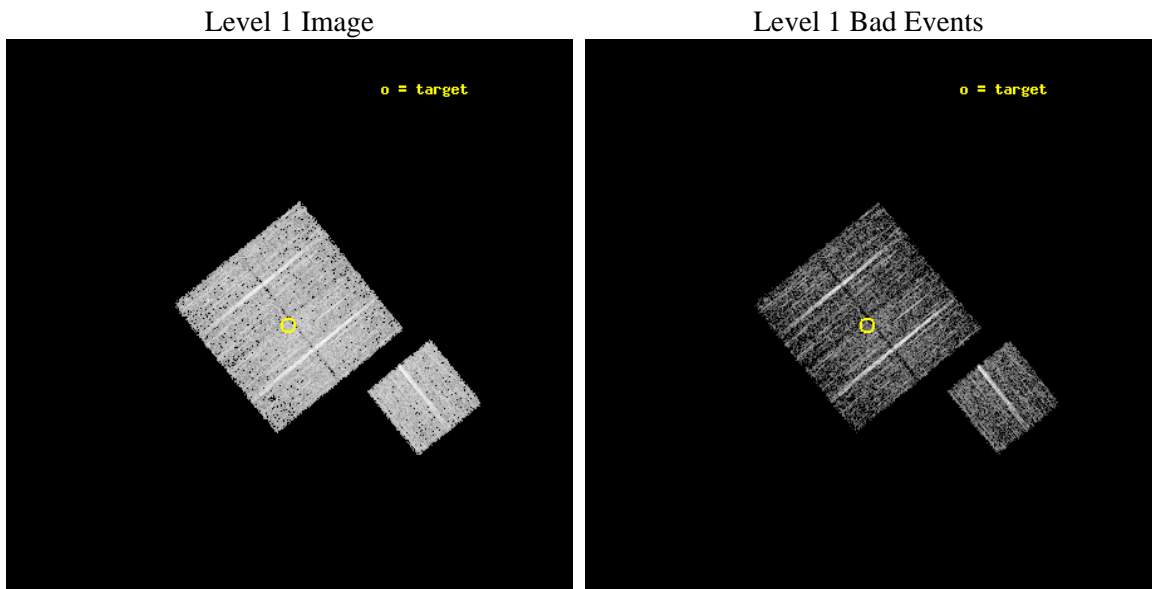
seq_num	900310	Sequence number
obs_id	4267	Observation id
title	A CHANDRA WIDE-FIELD SURVEY TO MAP THE COSMIC WEB AND INVESTIGATE THE EVOLUTION OF NUCLEAR ACCRETION	Proposal title
observer	Dr. Christine Jones	Principal investigator
object	SS54	Source name
dtcycle	0	
cycle	P	events from which exps? Prim/Second/Both
ra_targ	216.744263	Observer's specified target RA [deg]
dec_targ	32.845836	Observer's specified target Dec [deg]
ra_nom	216.74169367829	Nominal RA [deg]
dec_nom	32.849934241667	Nominal Dec [deg]
roll_nom	141.01009687356	Nominal Roll [deg]
revision	3	Processing version of data
ontime	4673.5483468473	Sum of GTIs [s]
livetime	4612.4849970795	Livetime [s]
ontime0	4673.4252268374	Sum of GTIs [s]
ontime1	4673.4662668407	Sum of GTIs [s]
ontime2	4673.507306844	Sum of GTIs [s]
ontime3	4673.5483468473	Sum of GTIs [s]
ontime6	4673.3841868341	Sum of GTIs [s]
l2events	9570	Number of level 2 events



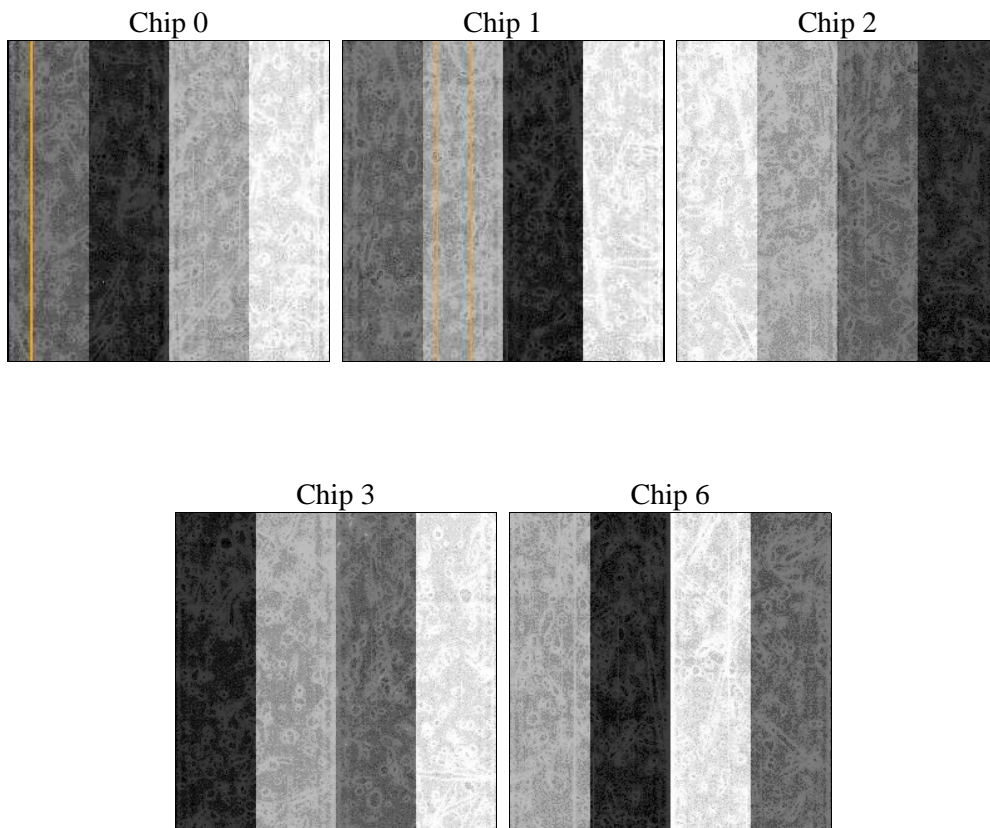
2 OBI

2.1 OBI

2.1.1 Images



2.1.2 Bias



2.1.3 Parameters

obi_num	0	Obi number	sched_exp_time	4900.000000	[s] Scheduled observation exposure time
ascdsver	8.4.5	Processing system revision	ontime	4673.5483468473	Sum of GTIs [s]
caldsver	4.5.2	 	ontime0	4673.4252268374	Sum of GTIs [s]
date	2012-10-24T21:04:30	Date and time of file creation	ontime1	4673.4662668407	Sum of GTIs [s]
revision	3	Processing version of data	ontime2	4673.507306844	Sum of GTIs [s]
			ontime3	4673.5483468473	Sum of GTIs [s]
			ontime6	4673.3841868341	Sum of GTIs [s]
			l1events	118668	Number of level 1 events

2.1.4 Events

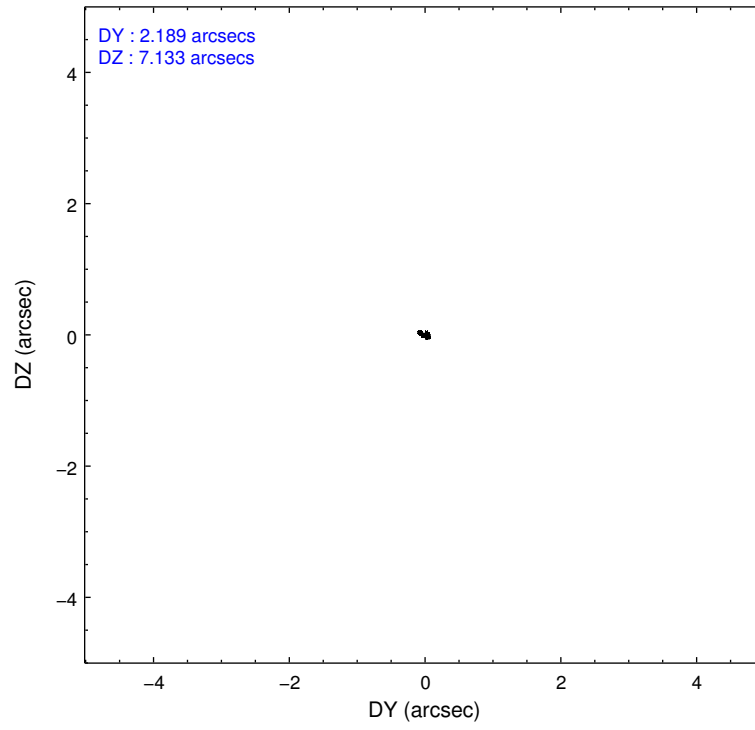
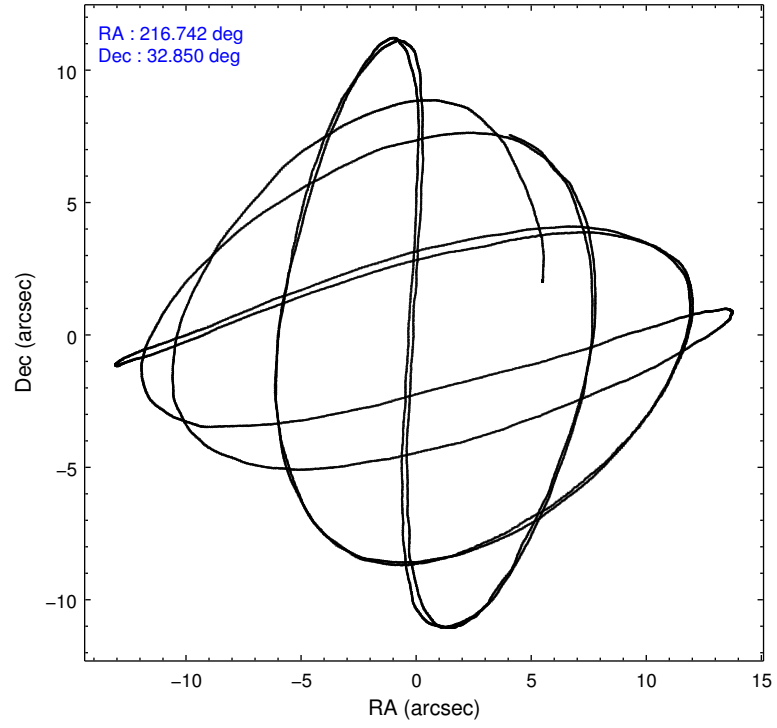
	ccd 0	ccd 1	ccd 2	ccd 3	ccd 6
level 1 events	21980	22258	25124	23806	25500
rejected events	19693	19724	22931	21596	22990
rejected %	89%	88%	91%	90%	90%

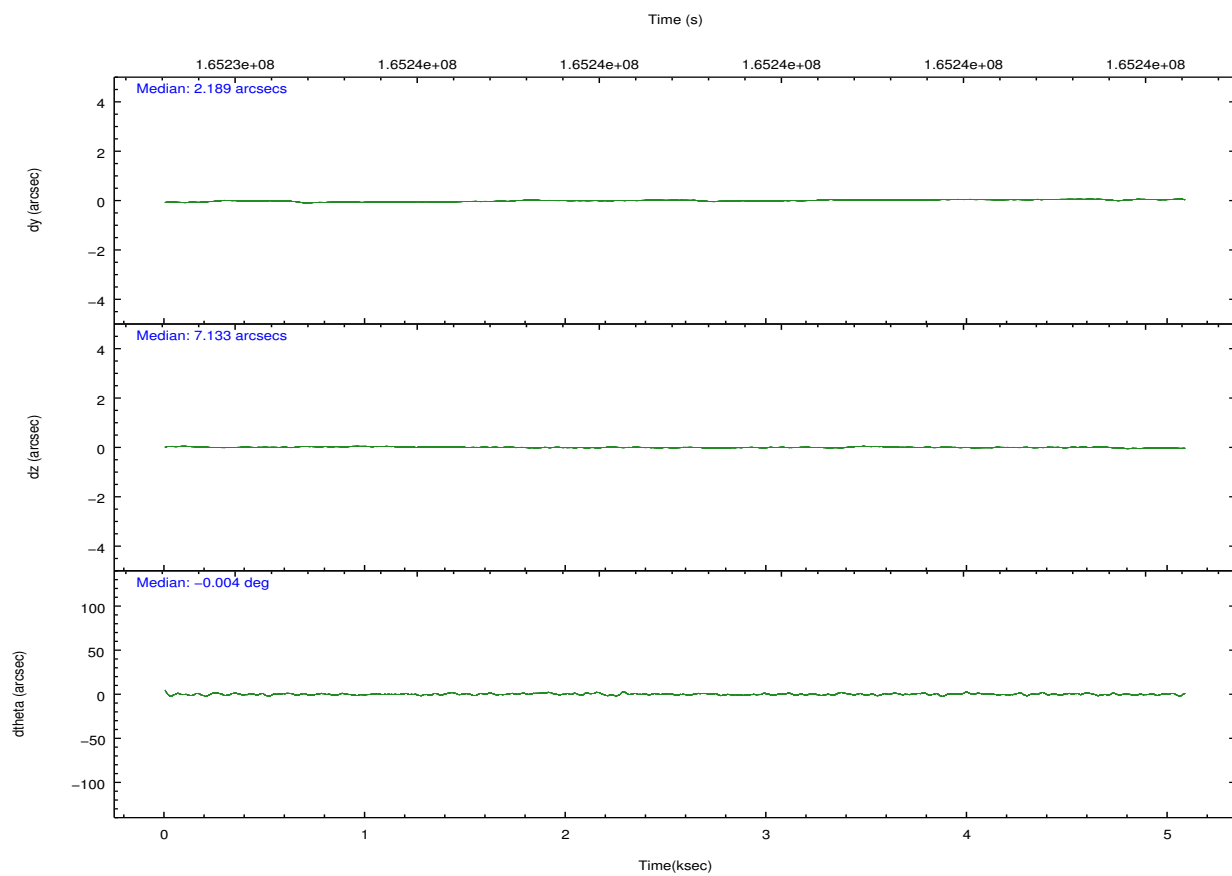
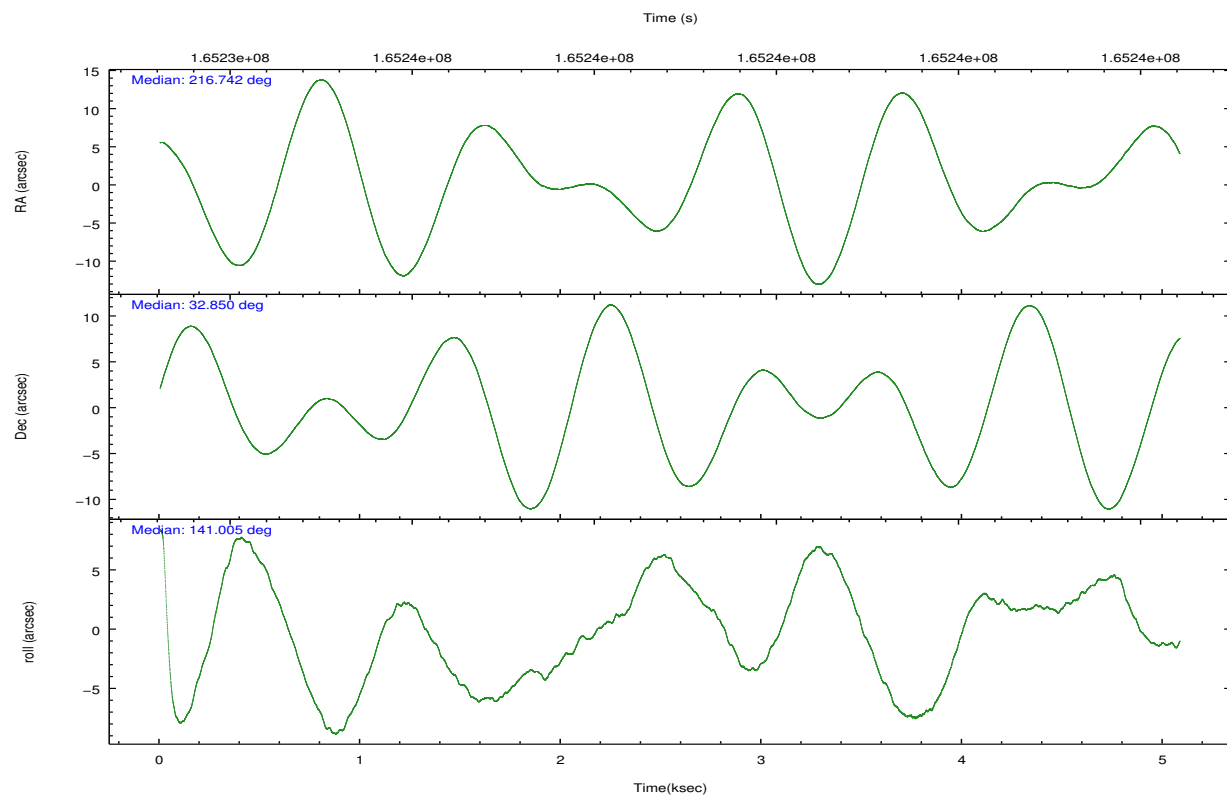
	ccd 0	ccd 1	ccd 2	ccd 3	ccd 6
grade 0 events	837	919	812	838	946
	3%	4%	3%	3%	3%
grade 1 events	12	6	15	8	9
	0%	0%	0%	0%	0%
grade 2 events	527	538	524	460	510
	2%	2%	2%	1%	2%
grade 3 events	264	291	247	251	277
	1%	1%	0%	1%	1%
grade 4 events	252	299	250	263	287
	1%	1%	0%	1%	1%
grade 5 events	710	713	635	770	744
	3%	3%	2%	3%	2%
grade 6 events	408	487	362	399	491
	1%	2%	1%	1%	1%
grade 7 events	18970	19005	22279	20817	22236
	86%	85%	88%	87%	87%

2.2 Compared Parameters

Parameter	Planned	Actual	Parameter	Planned	Actual
Instrument	ACIS	ACIS	Obspar format version number	7	7
Detector	ACIS-01236	ACIS-01236	Obspar file type	PREDICTED	ACTUAL
Grating	NONE	NONE	Obspar update status	NONE	UPDATED
Data mode	VFAINT	VFAINT	Number of optional ACIS chips dropped	0	0
Observation mode	POINTING	POINTING	On-chip summing requested	N	N
[deg] Pointing RA	216.773879	216.7416936782924	Subarray requested	NONE	NONE
[deg] Pointing Dec	32.845758	32.84993424166685	Alternating exposures requested	N	N
[deg] Pointing Roll	140.783937	141.0100968735573	[s] Primary exposure time	0.000000	3.1
[mm] SIM focus pos	-0.782348	-0.7809083437167272			
[mm] SIM defocus	0	0.001439871863259334			
[mm] SIM translation stage pos	-233.592463	-233.5874344608287			
[mm] SIM translation stage offset	0	-0.005018542100998502			
[s] Observation start time (MET)	165234060.184000	165233684.84333			
Observation start date	2003-03-28T10:19:56	2003-03-28T10:14:44			
[s] Observation end time (MET)	165238960.184000	165239094.79356			
Observation end date	2003-03-28T11:41:36	2003-03-28T11:44:54			
Read mode	TIMED	TIMED			

2.3 Aspect



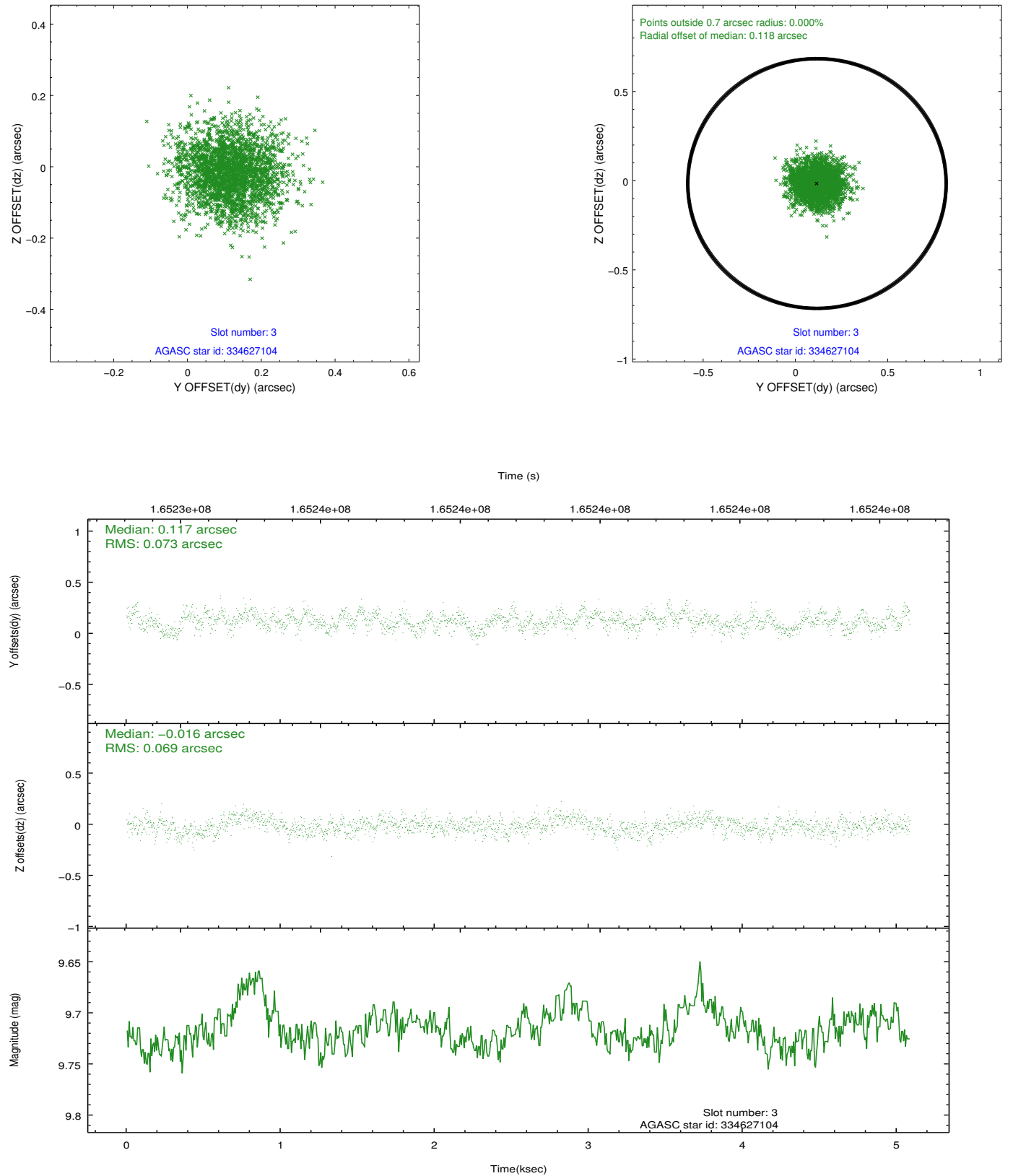


Slot Statistics

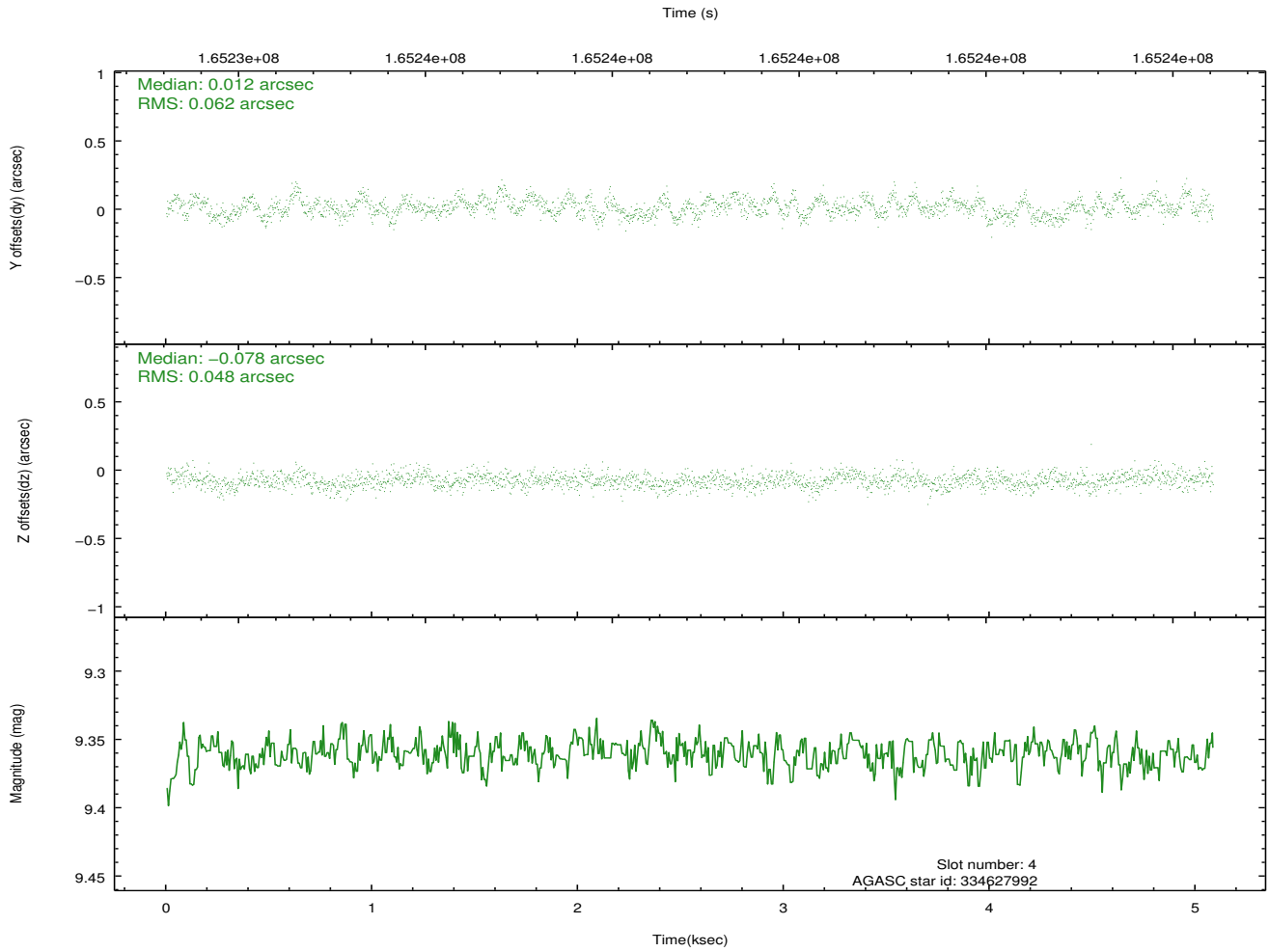
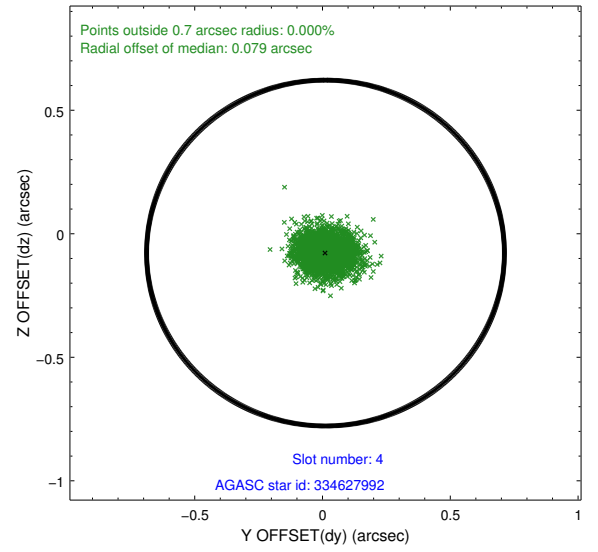
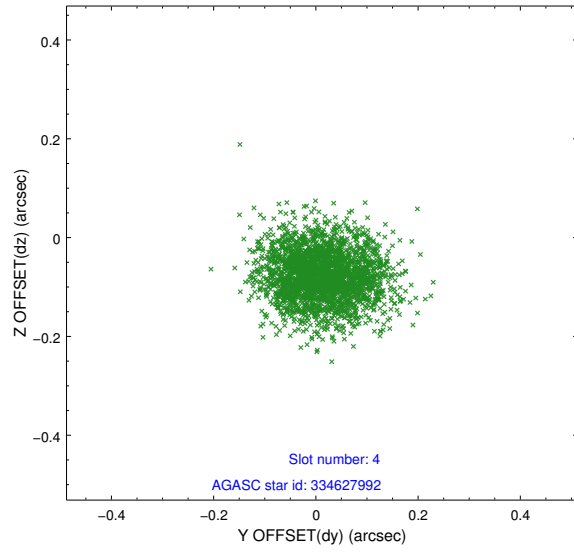
slot	status	id	mag	n_pts	med_dy	med_dz	dr1	dr2	ra	dec	mean_y	mean_z
0	FID	ACIS-I-1	7.25	1240	-0.094	0.002	0.009	0.014	0.000000	0.000000	937.56	-830.51
1	FID	ACIS-I-2	7.16	1240	-0.058	-0.028	0.006	0.010	0.000000	0.000000	-755.82	-837.61
2	FID	ACIS-I-4	7.18	1240	0.054	0.093	0.006	0.010	0.000000	0.000000	2157.01	1068.82
3	GUIDE	334627104	9.72	2479	0.117	-0.016	0.108	0.171	217.006799	32.294654	-1802.79	1088.40
4	GUIDE	334627992	9.36	2479	0.012	-0.078	0.083	0.135	216.814353	32.274859	-1395.51	1514.86
5	GUIDE	335028240	9.17	2480	0.028	0.022	0.080	0.128	216.746851	33.385009	1290.37	-1451.77
6	GUIDE	335029808	9.06	2477	-0.076	0.136	0.068	0.110	216.789548	33.180488	726.09	-963.69
7	GUIDE	335030152	9.71	2479	-0.089	-0.071	0.132	0.234	216.202154	33.091054	1897.64	402.32

2.4 Star Slots

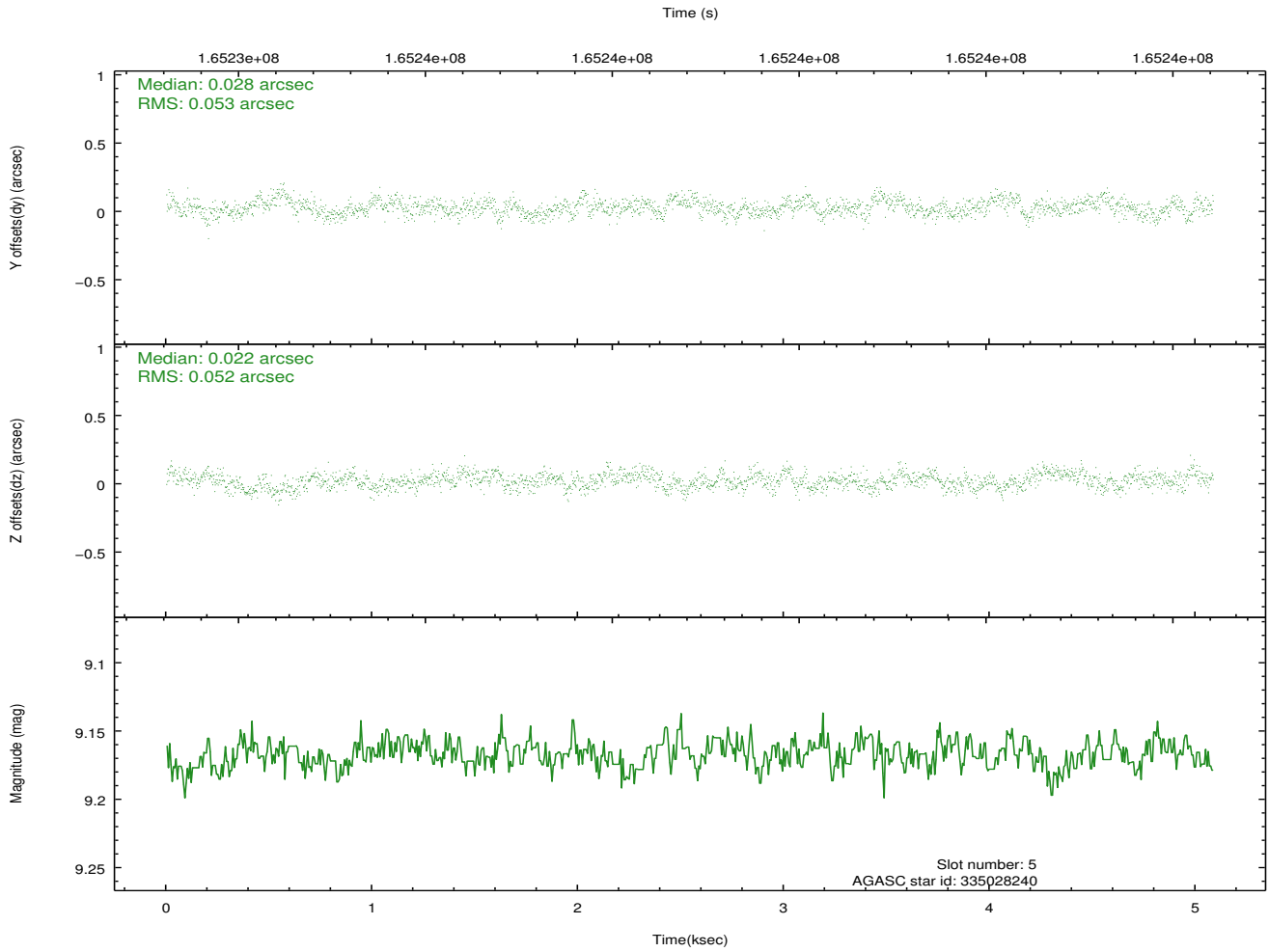
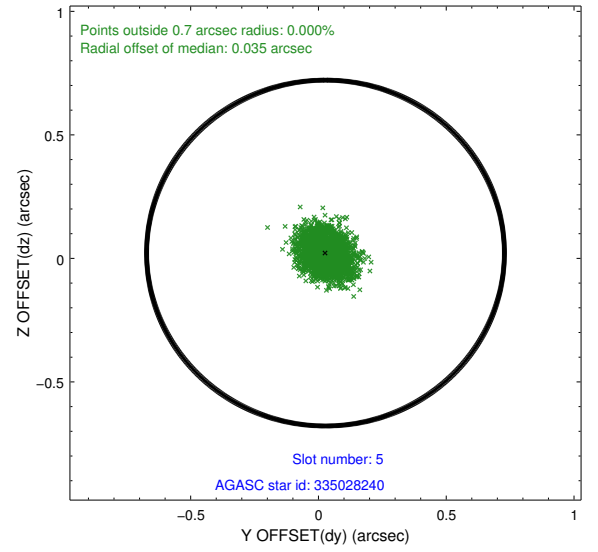
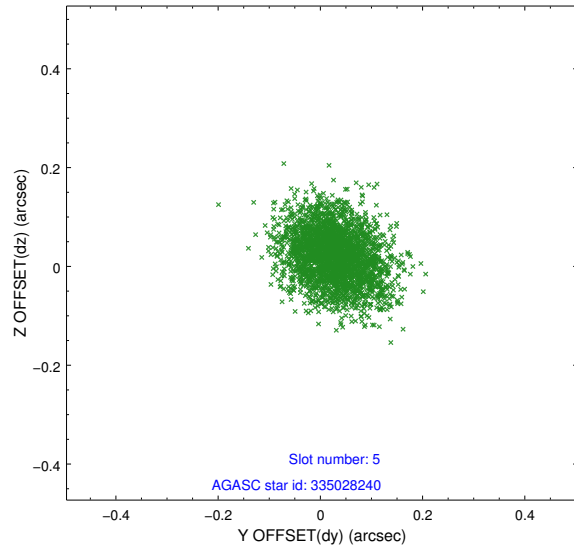
2.4.1 Slot 3



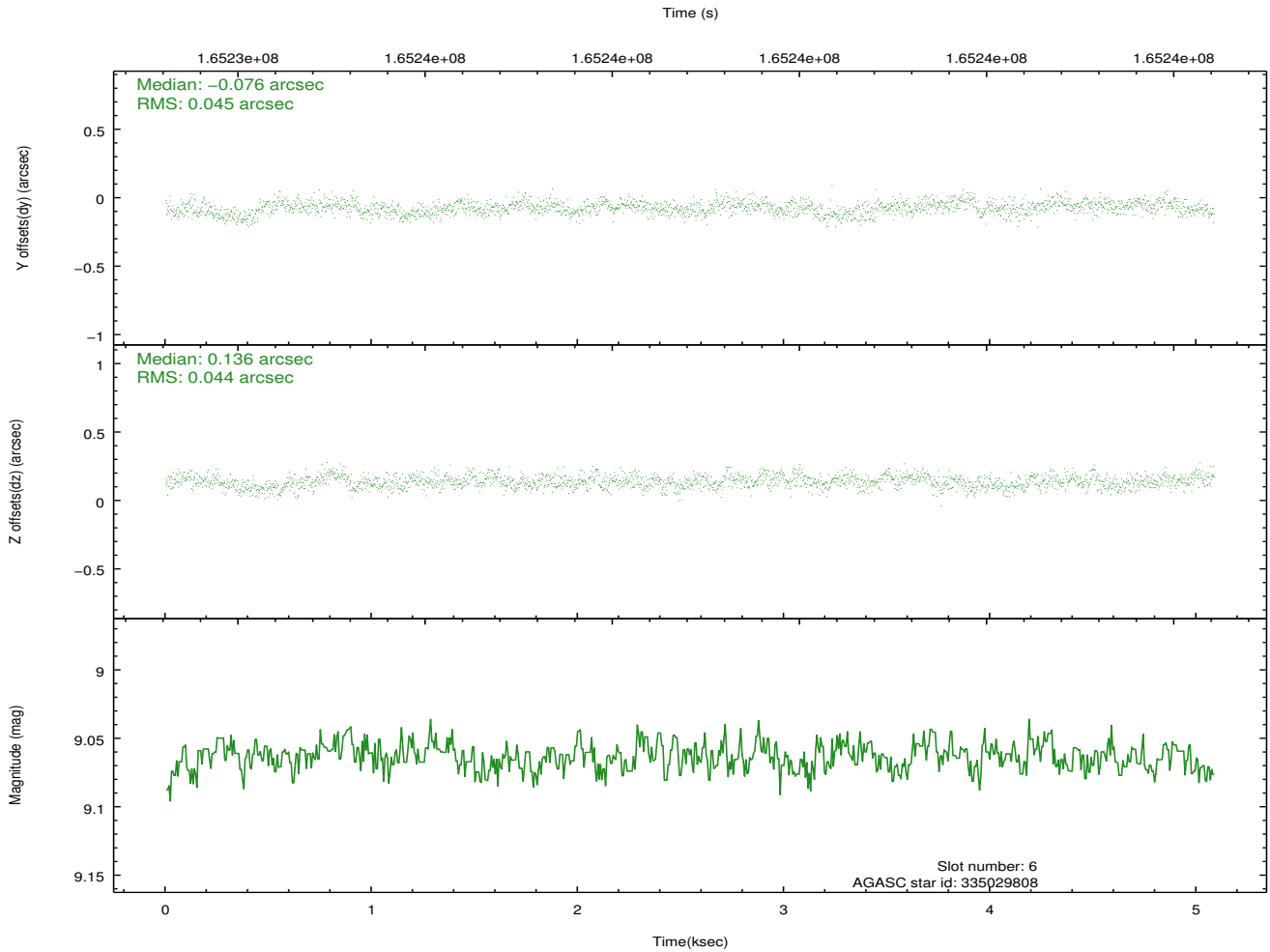
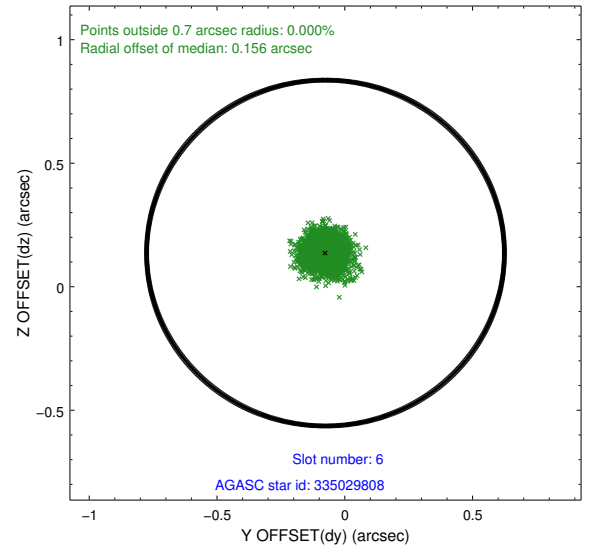
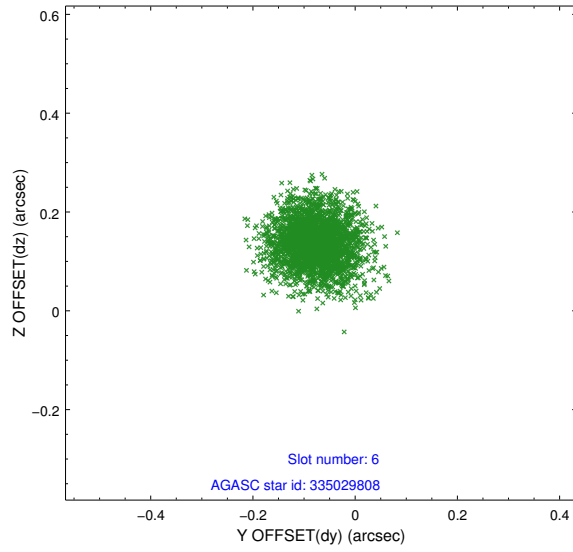
2.4.2 Slot 4



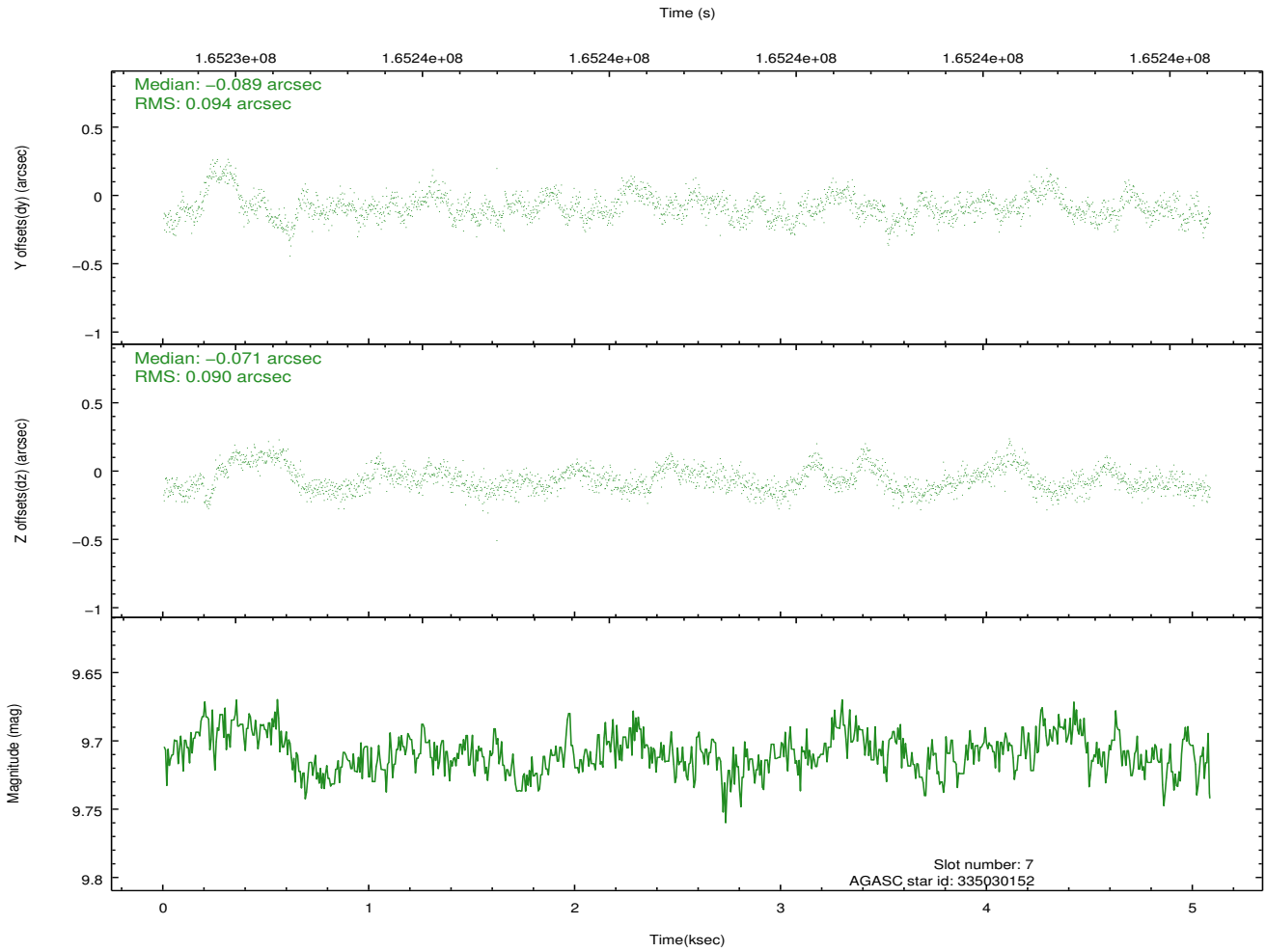
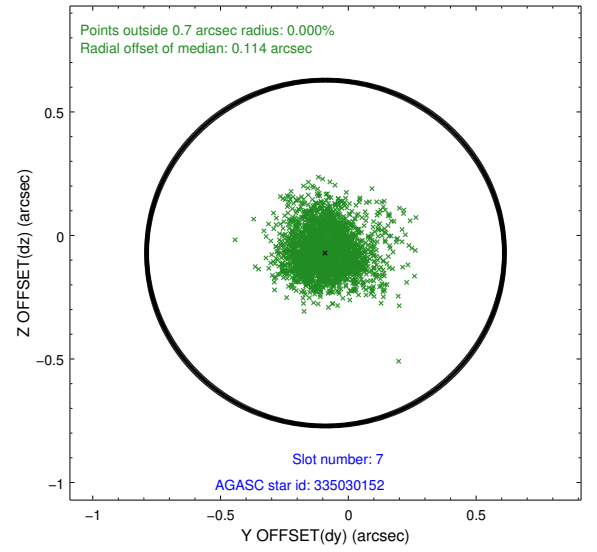
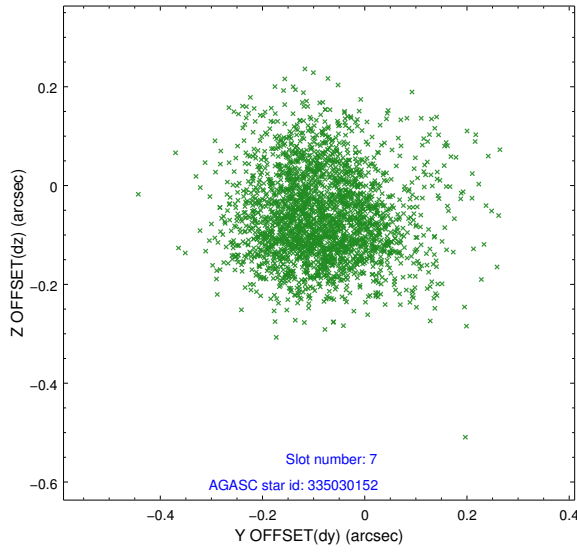
2.4.3 Slot 5



2.4.4 Slot 6

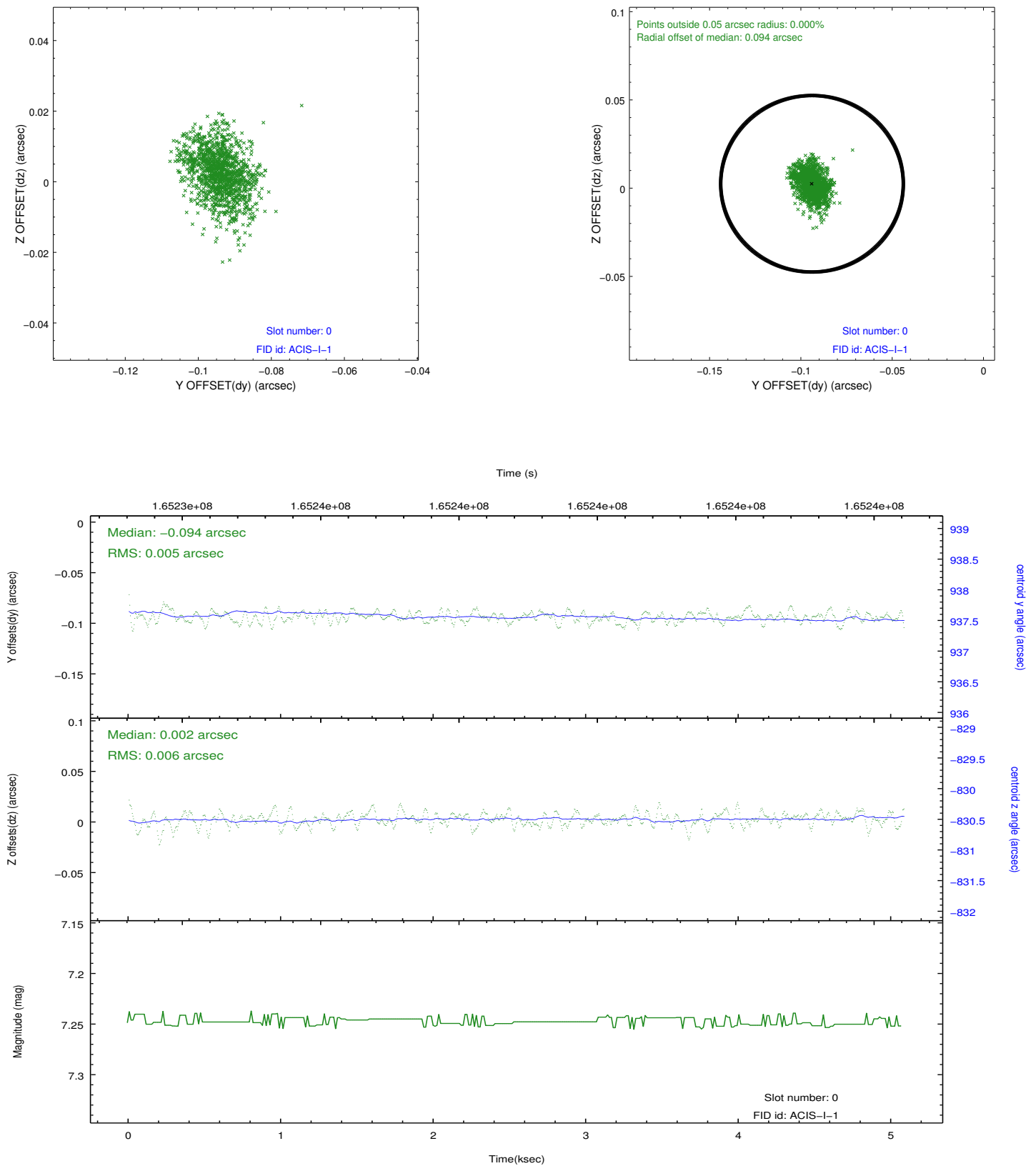


2.4.5 Slot 7

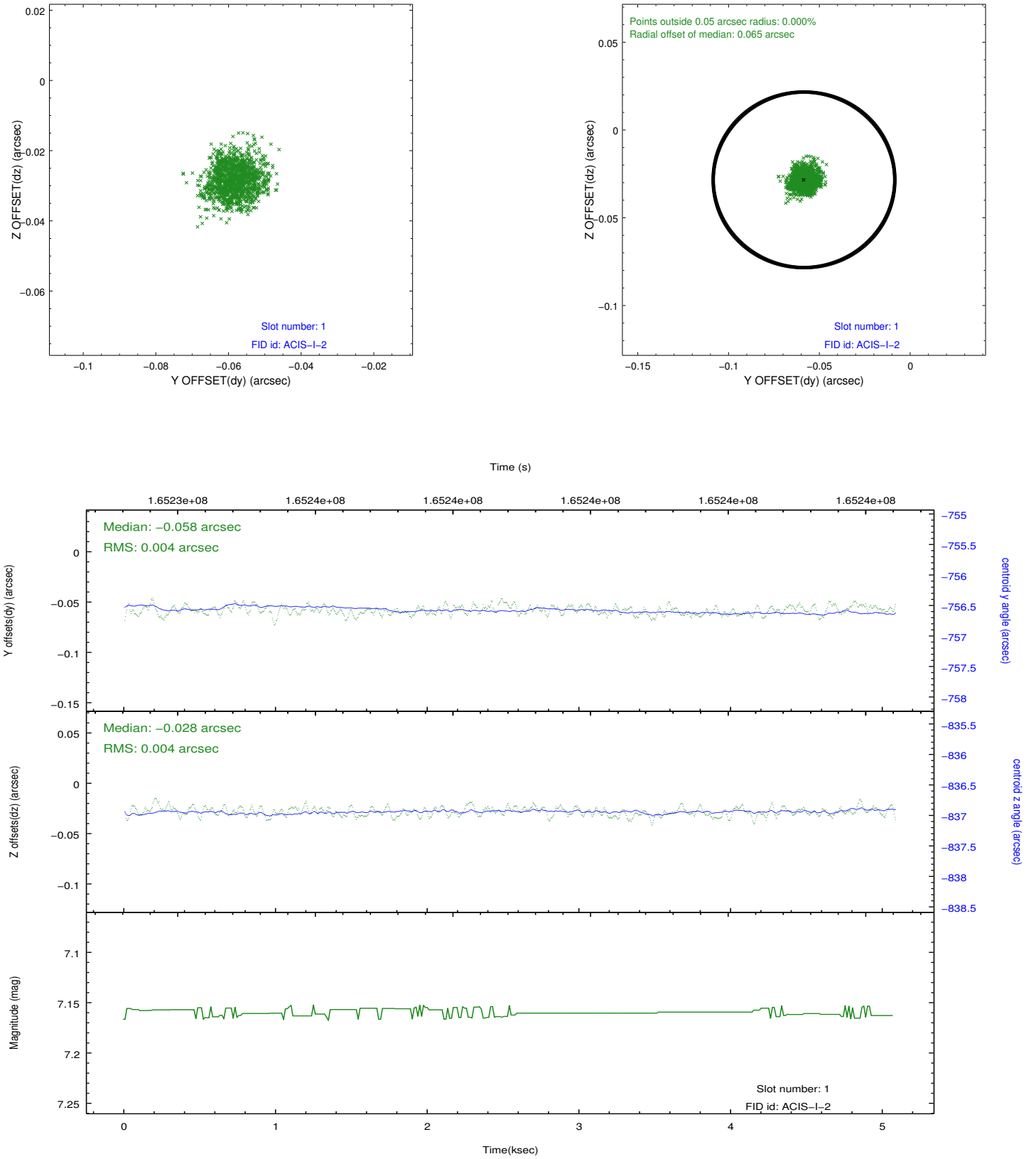


2.5 FID Slots

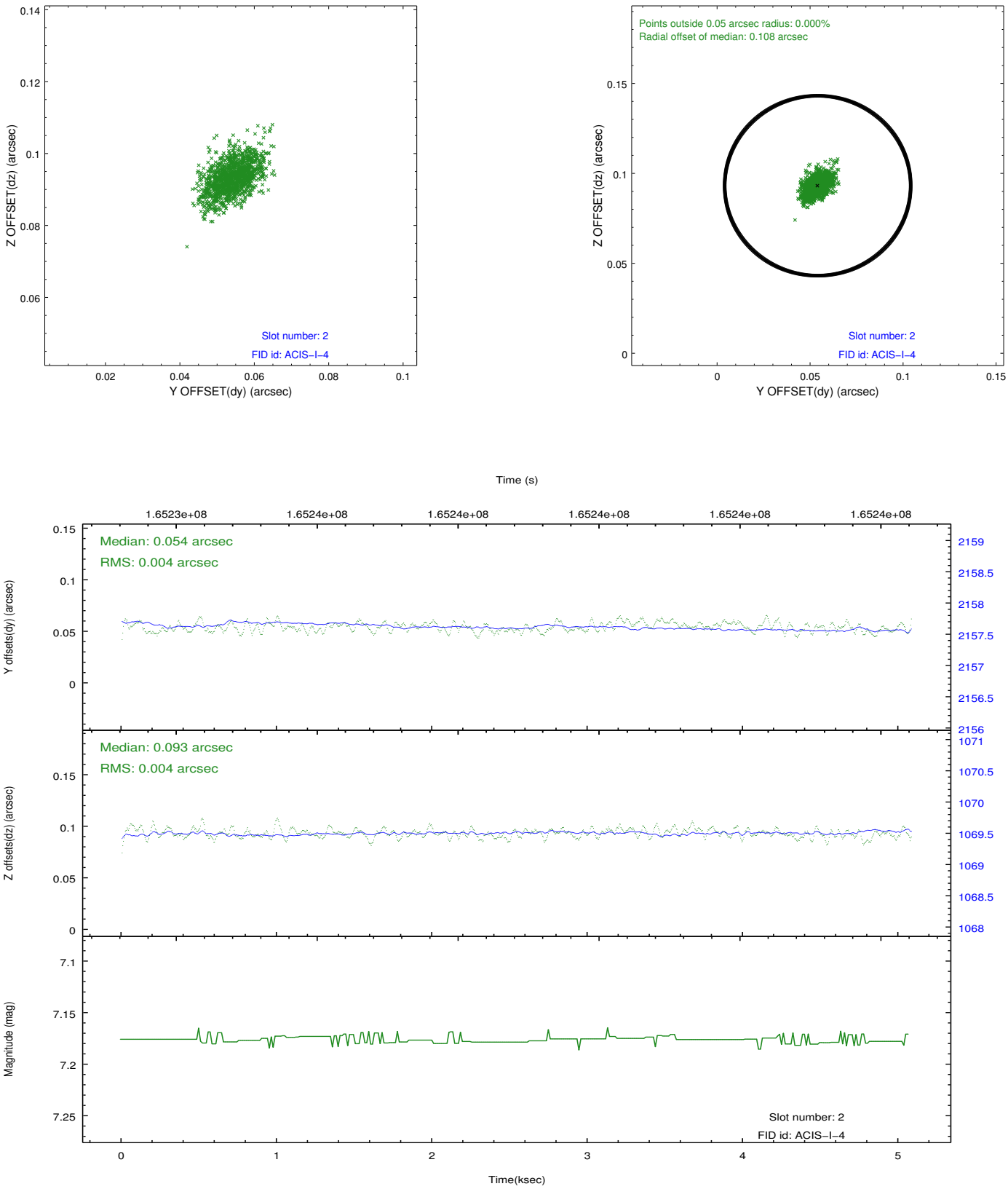
2.5.1 Slot 0



2.5.2 Slot 1



2.5.3 Slot 2



A Summary

A.1 Status

V&V Scientist	Jen Lauer
V&V Date (YYYY-MM-DD)	2012.11.09
V&V Edition	1
V&V Disposition and Status	OK
V&V Charge Time	4.675

A.2 Comments