

V&V Reference Report

L2 ASCDS Version : 8.4.5

Observation 4264 - L2 Version 5
Chandra X-Ray Center

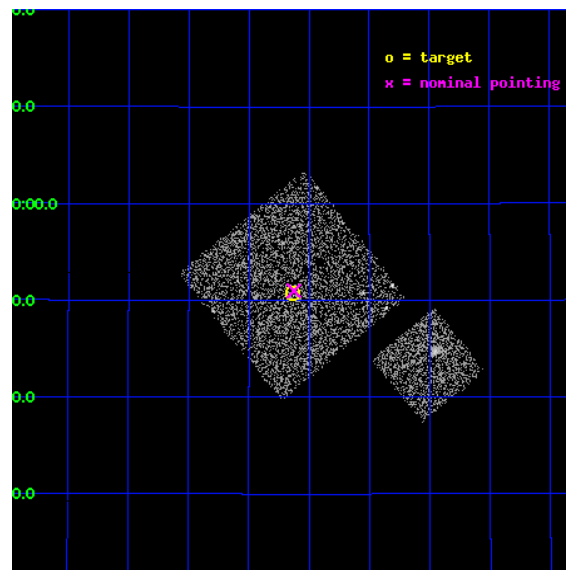
L2 Processing Date : Jan 4 2013

Contents

1	Front	2
2	OBI	3
2.1	OBI	3
2.1.1	Images	3
2.1.2	Bias	3
2.1.3	Parameters	4
2.1.4	Events	4
2.2	Compared Parameters	5
2.3	Aspect	6
2.4	Star Slots	9
2.4.1	Slot 4	9
2.4.2	Slot 5	10
2.4.3	Slot 6	11
2.4.4	Slot 7	12
2.5	FID Slots	13
2.5.1	Slot 0	13
2.5.2	Slot 1	14
A	Summary	15
A.1	Status	15
A.2	Comments	15

1 Front

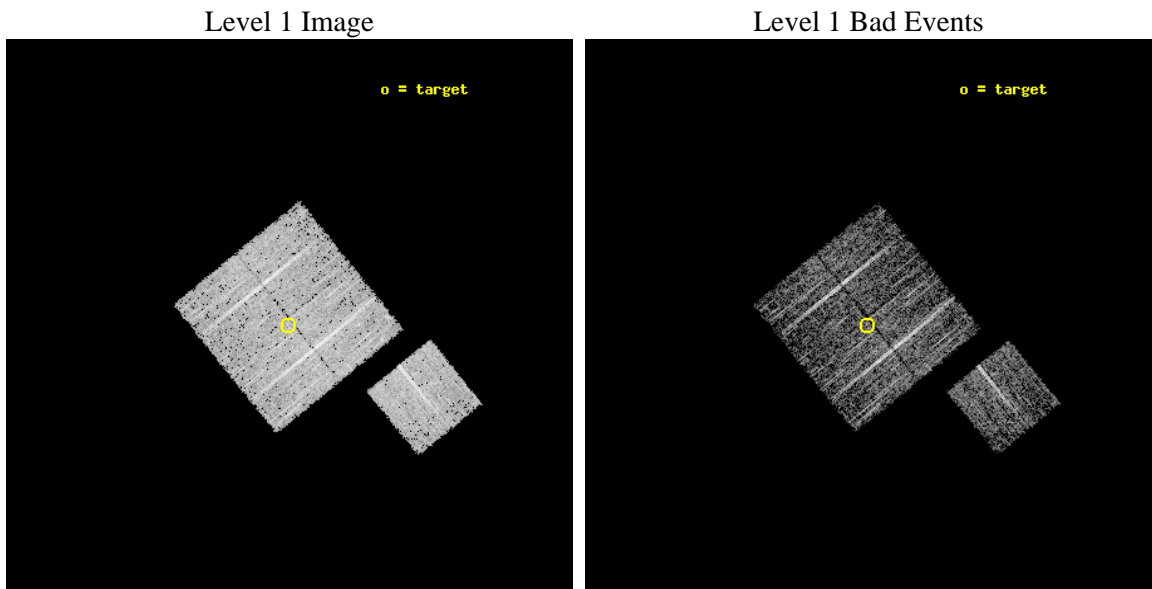
seq_num	900307	Sequence number
obs_id	4264	Observation id
title	A CHANDRA WIDE-FIELD SURVEY TO MAP THE COSMIC WEB AND INVESTIGATE THE EVOLUTION OF NUCLEAR ACCRETION	Proposal title
observer	Dr. Christine Jones	Principal investigator
object	SS21	Source name
dtcycle	0	
cycle	P	events from which exps? Prim/Second/Both
ra_targ	218.034014	Observer's specified target RA [deg]
dec_targ	32.845836	Observer's specified target Dec [deg]
ra_nom	218.03148432388	Nominal RA [deg]
dec_nom	32.849872616521	Nominal Dec [deg]
roll_nom	141.01021397029	Nominal Roll [deg]
revision	5	Processing version of data
ontime	5018.8999903202	Sum of GTIs [s]
livetime	4953.3243670863	Livetime [s]
ontime0	5018.8999903202	Sum of GTIs [s]
ontime1	5015.7590100765	Sum of GTIs [s]
ontime2	5015.7590101063	Sum of GTIs [s]
ontime3	5018.8999903202	Sum of GTIs [s]
ontime6	5018.8999903202	Sum of GTIs [s]
l2events	10206	Number of level 2 events



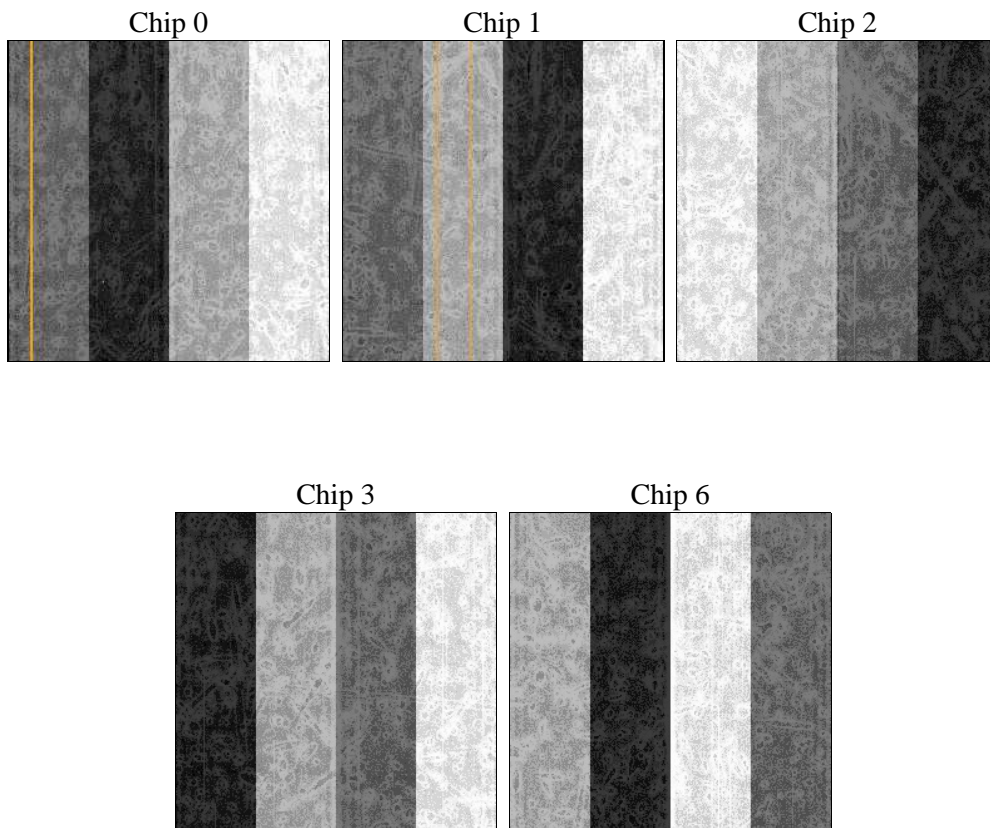
2 OBI

2.1 OBI

2.1.1 Images



2.1.2 Bias



2.1.3 Parameters

obi_num	1	Obi number	sched_exp_time	4900.000000	[s] Scheduled observation exposure time
ascdsver	8.5.1.1	Processing system revision	ontime	5018.8999903202	Sum of GTIs [s]
caldsver	4.5.5	 	ontime0	5018.8999903202	Sum of GTIs [s]
date	2013-01-04T19:43:51	Date and time of file creation	ontime1	5015.7590100765	Sum of GTIs [s]
revision	5	Processing version of data	ontime2	5015.7590101063	Sum of GTIs [s]
			ontime3	5018.8999903202	Sum of GTIs [s]
			ontime6	5018.8999903202	Sum of GTIs [s]
			l1events	123318	Number of level 1 events

2.1.4 Events

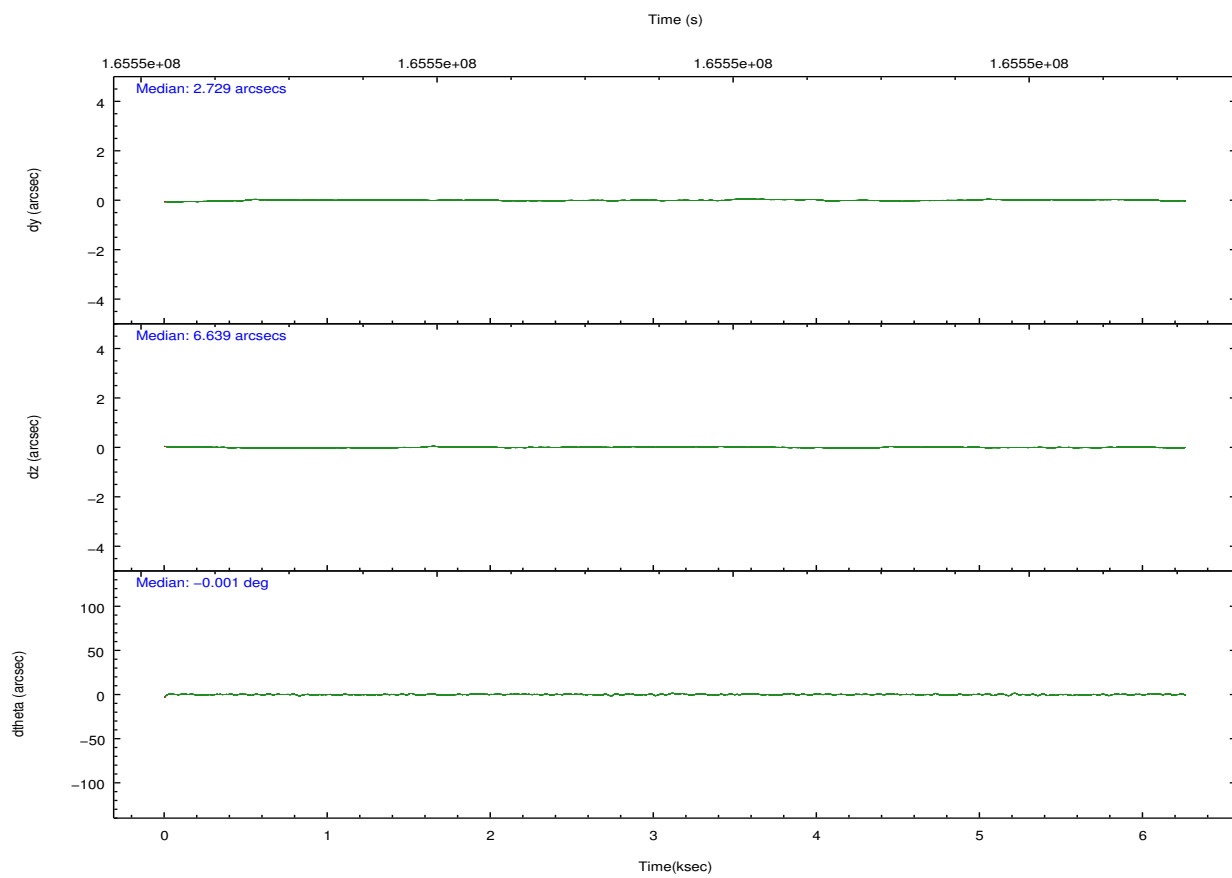
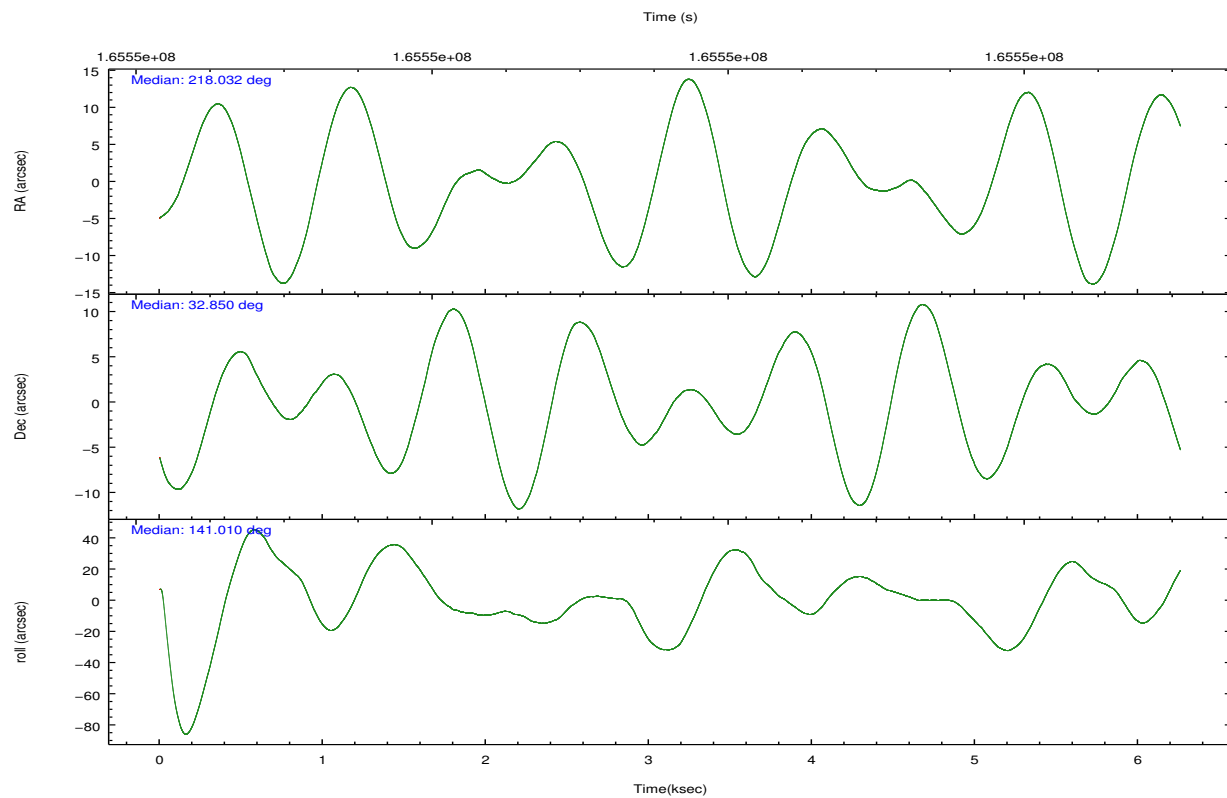
	ccd 0	ccd 1	ccd 2	ccd 3	ccd 6
level 1 events	22559	23117	27006	25905	24731
rejected events	20136	20540	24509	23587	22101
rejected %	89%	88%	90%	91%	89%

	ccd 0	ccd 1	ccd 2	ccd 3	ccd 6
grade 0 events	920	906	1008	868	1018
	4%	3%	3%	3%	4%
grade 1 events	6	8	14	6	11
	0%	0%	0%	0%	0%
grade 2 events	584	532	564	474	547
	2%	2%	2%	1%	2%
grade 3 events	292	316	277	270	272
	1%	1%	1%	1%	1%
grade 4 events	212	318	260	280	281
	0%	1%	0%	1%	1%
grade 5 events	729	742	684	875	786
	3%	3%	2%	3%	3%
grade 6 events	415	509	390	427	515
	1%	2%	1%	1%	2%
grade 7 events	19401	19786	23809	22705	21301
	86%	85%	88%	87%	86%

2.2 Compared Parameters

Parameter	Planned	Actual	Parameter	Planned	Actual
Instrument	ACIS	ACIS	Obspar format version number	7	7
Detector	ACIS-01236	ACIS-01236	Obspar file type	PREDICTED	ACTUAL
Grating	NONE	NONE	Obspar update status	NONE	UPDATED
Data mode	VFAINT	VFAINT	Number of optional ACIS chips dropped	0	0
Observation mode	POINTING	POINTING	On-chip summing requested	N	N
[deg] Pointing RA	218.063638	218.0314843238831	Subarray requested	NONE	NONE
[deg] Pointing Dec	32.845761	32.84987261652122	Alternating exposures requested	N	N
[deg] Pointing Roll	140.783937	141.0102139702904	[s] Primary exposure time	0.000000	3.1
[mm] SIM focus pos	-0.782348	-0.7809083437167272			
[mm] SIM defocus	0	0.001439871863259334			
[mm] SIM translation stage pos	-233.592463	-233.5874344608287			
[mm] SIM translation stage offset	0	-0.005018542100998502			
[s] Observation start time (MET)	165549844.184000	165548297.84409			
Observation start date	2003-04-01T02:03:00	2003-04-01T01:38:17			
[s] Observation end time (MET)	165554744.184000	165554877.83187			
Observation end date	2003-04-01T03:24:40	2003-04-01T03:27:57			
Read mode	TIMED	TIMED			

2.3 Aspect

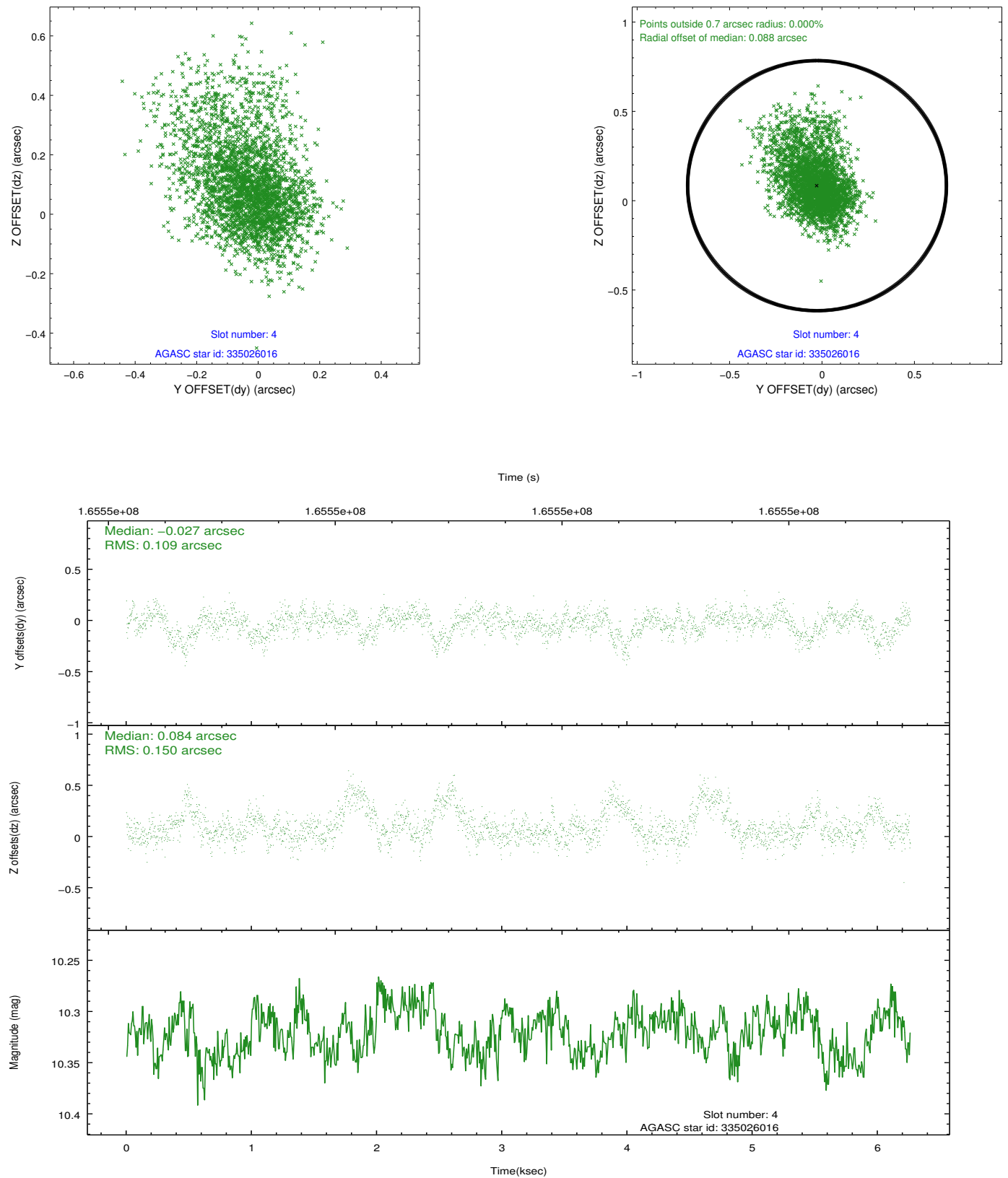


Slot Statistics

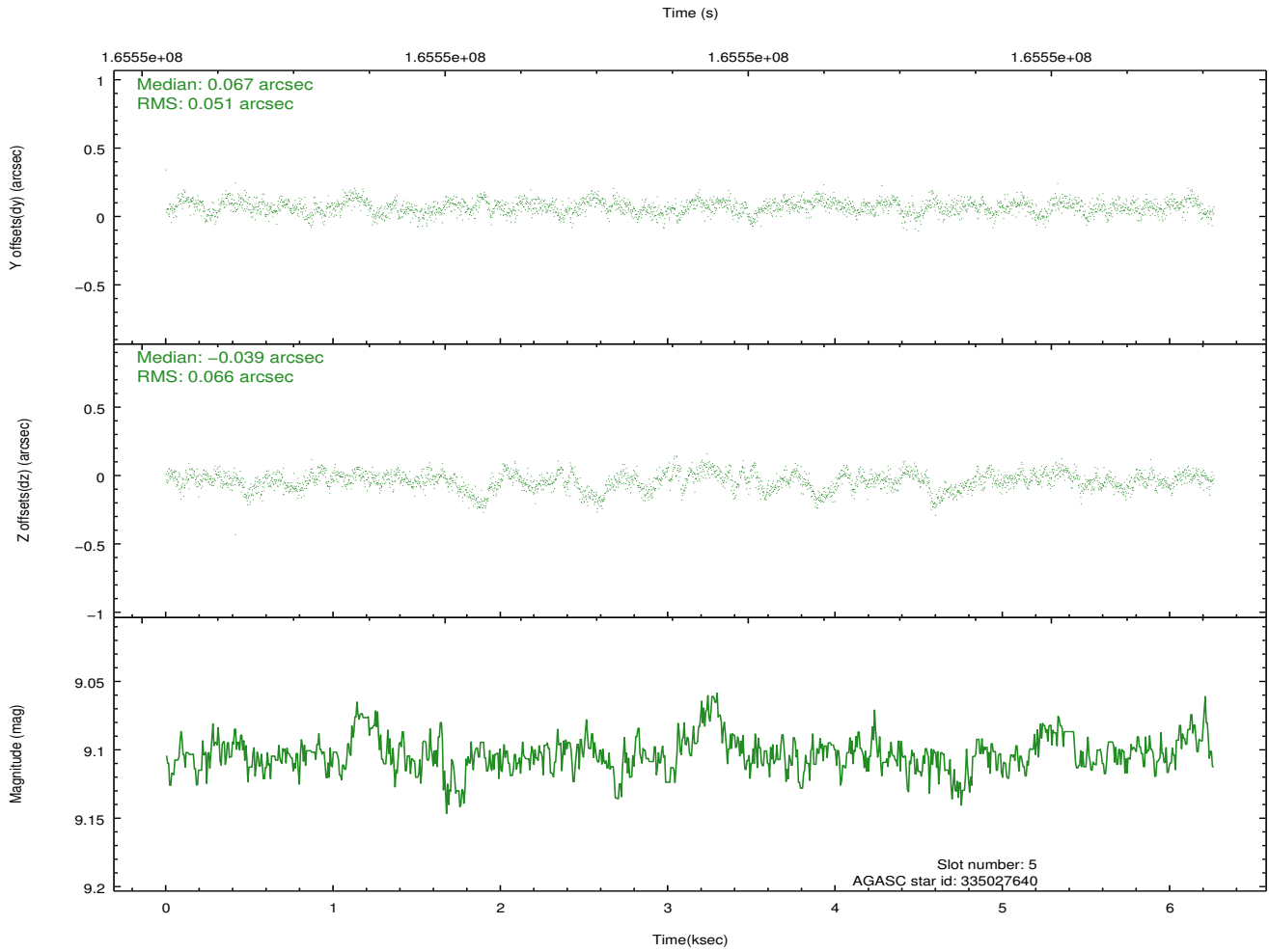
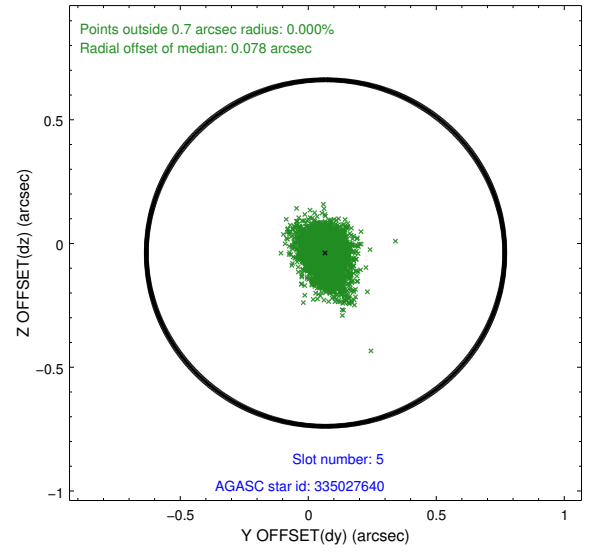
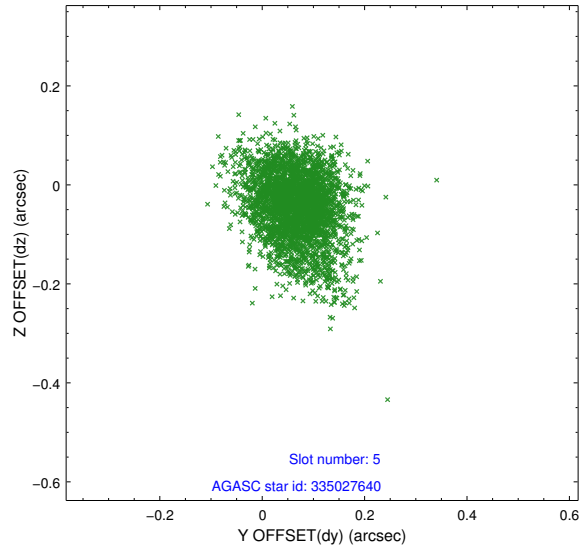
slot	status	id	mag	n_pts	med_dy	med_dz	dr1	dr2	ra	dec	mean_y	mean_z
0	FID	ACIS-I-1	7.24	1528	0.018	-0.008	0.005	0.010	0.000000	0.000000	937.08	-830.04
1	FID	ACIS-I-5	7.24	1527	-0.079	0.058	0.005	0.010	0.000000	0.000000	-1810.57	1067.09
2	OMITTED		0.00	0	0.000	0.000	0.000	0.000	0.000000	0.000000	0.00	0.00
3	OMITTED		0.00	0	0.000	0.000	0.000	0.000	0.000000	0.000000	0.00	0.00
4	GUIDE	335026016	10.32	3048	-0.027	0.084	0.182	0.350	218.407506	33.416168	499.56	-2245.20
5	GUIDE	335027640	9.10	3054	0.067	-0.039	0.087	0.149	218.092211	33.193770	726.43	-1025.60
6	GUIDE	335028616	9.99	3039	-0.012	-0.059	0.127	0.204	218.529874	33.175085	-336.17	-1809.13
7	GUIDE	335029384	8.49	3054	-0.019	0.001	0.076	0.126	217.848061	33.088477	1057.14	-266.68

2.4 Star Slots

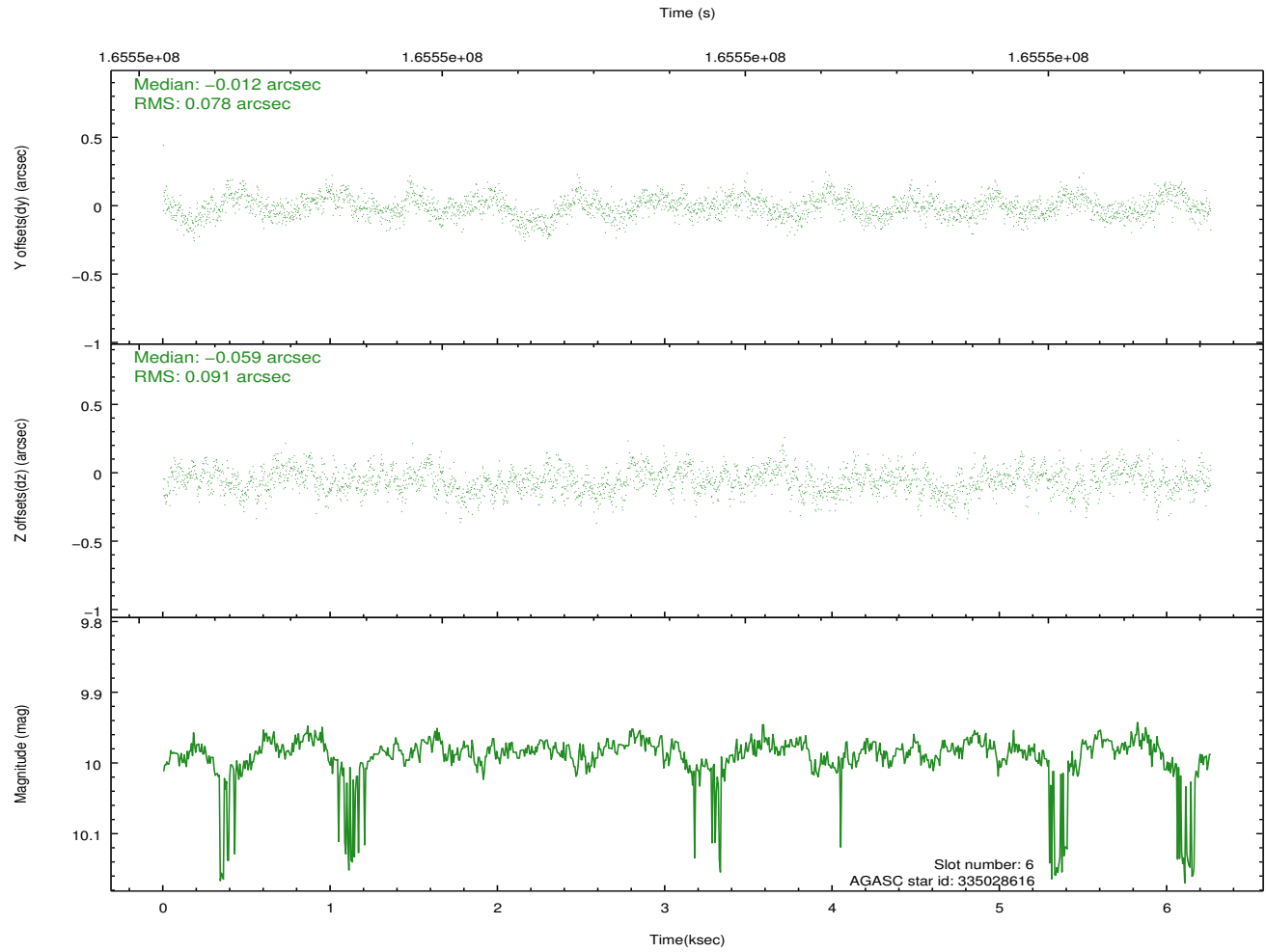
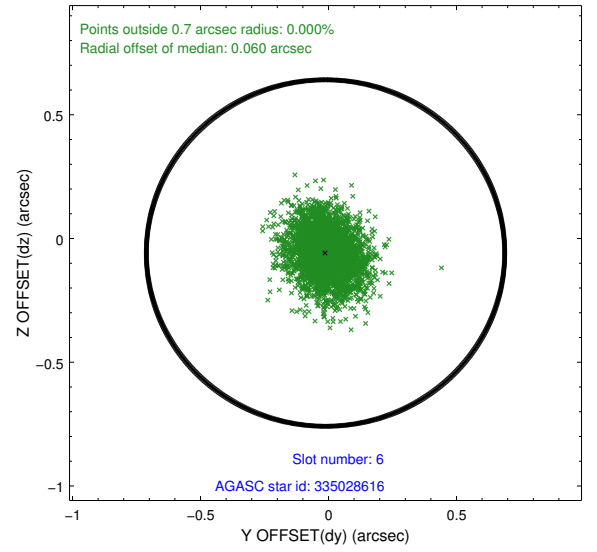
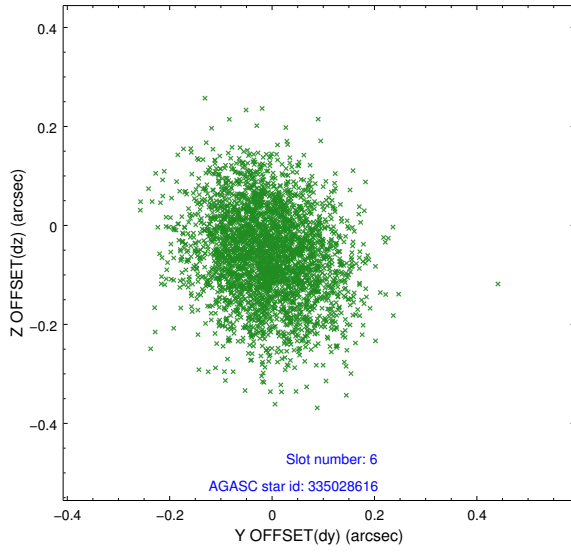
2.4.1 Slot 4



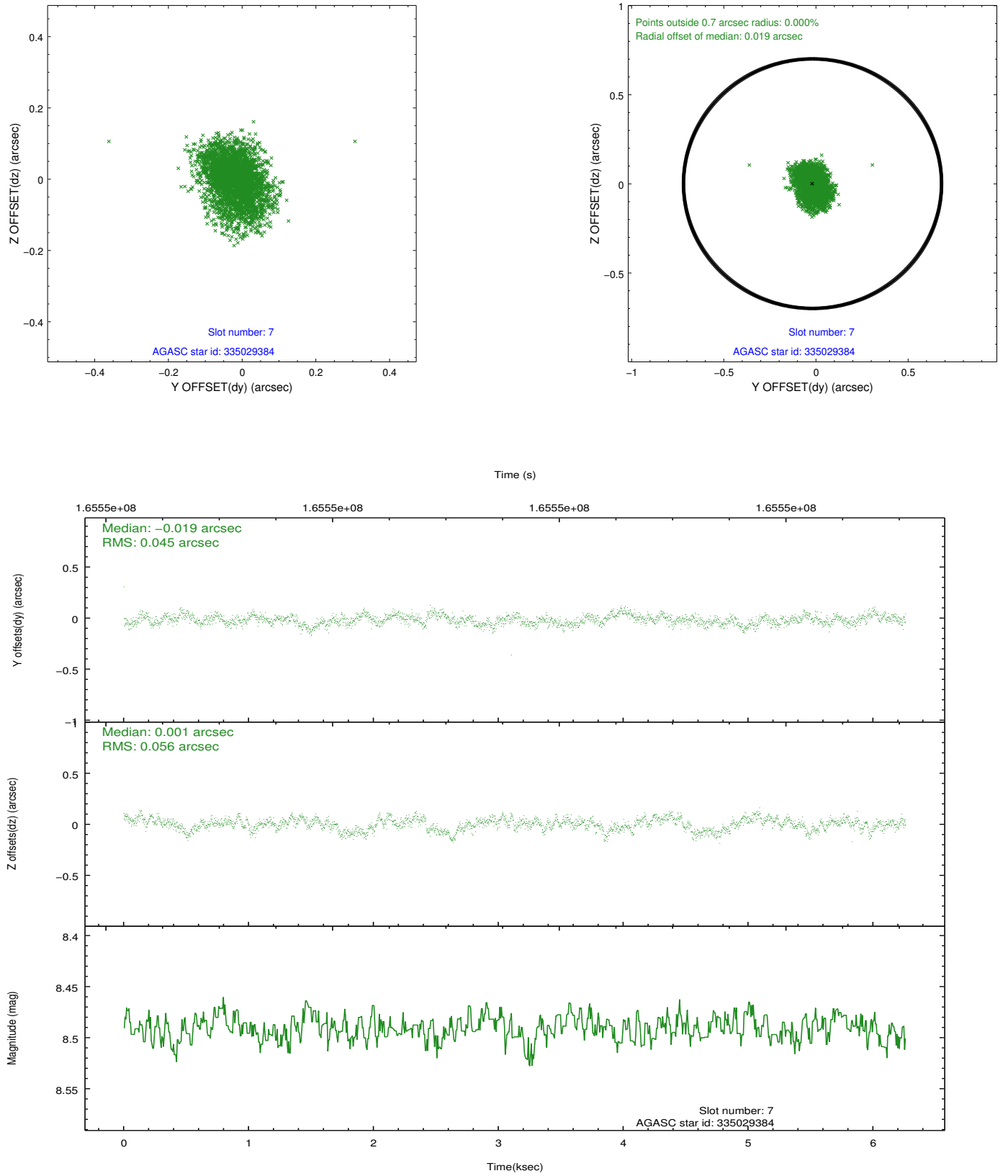
2.4.2 Slot 5



2.4.3 Slot 6

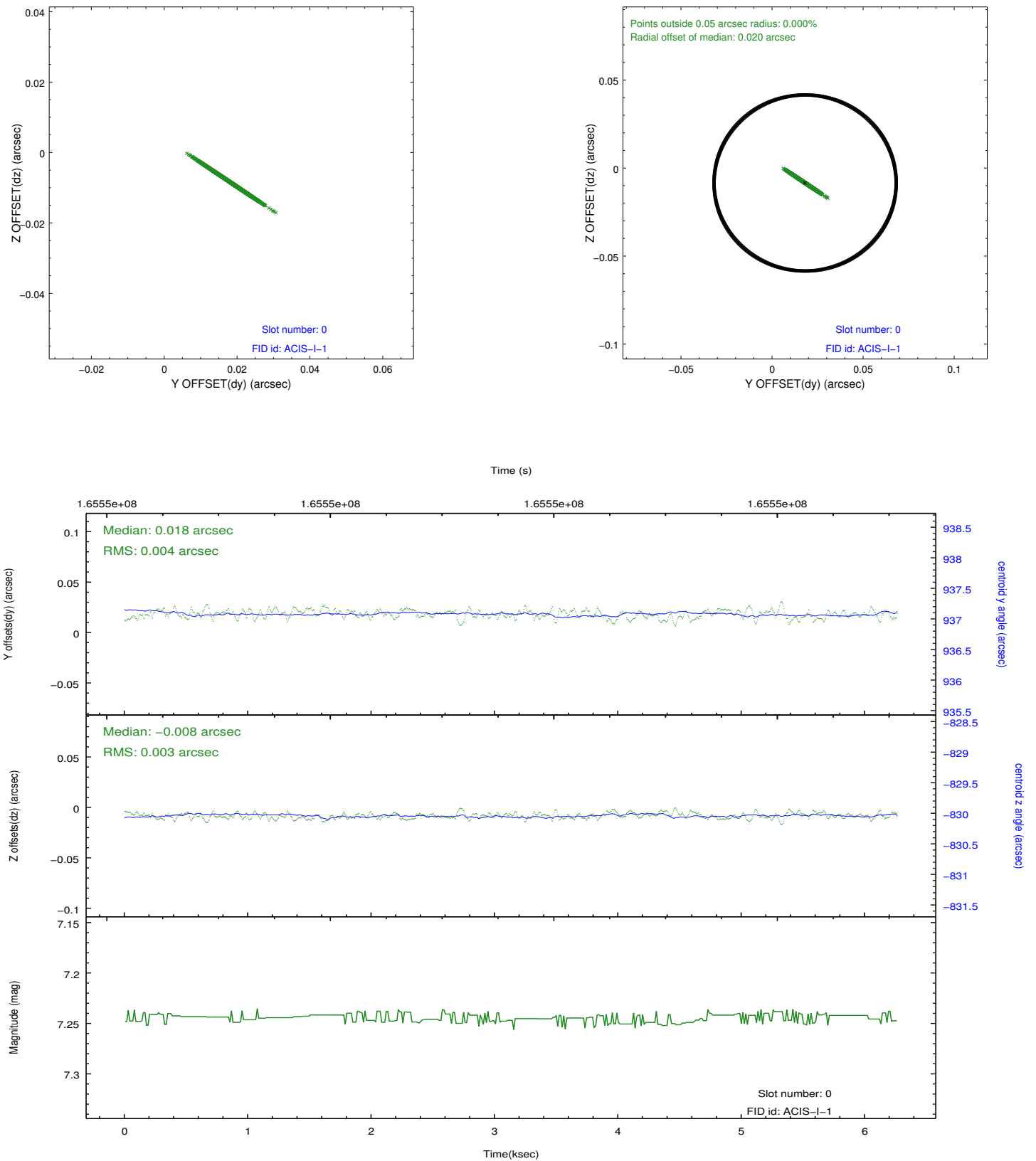


2.4.4 Slot 7

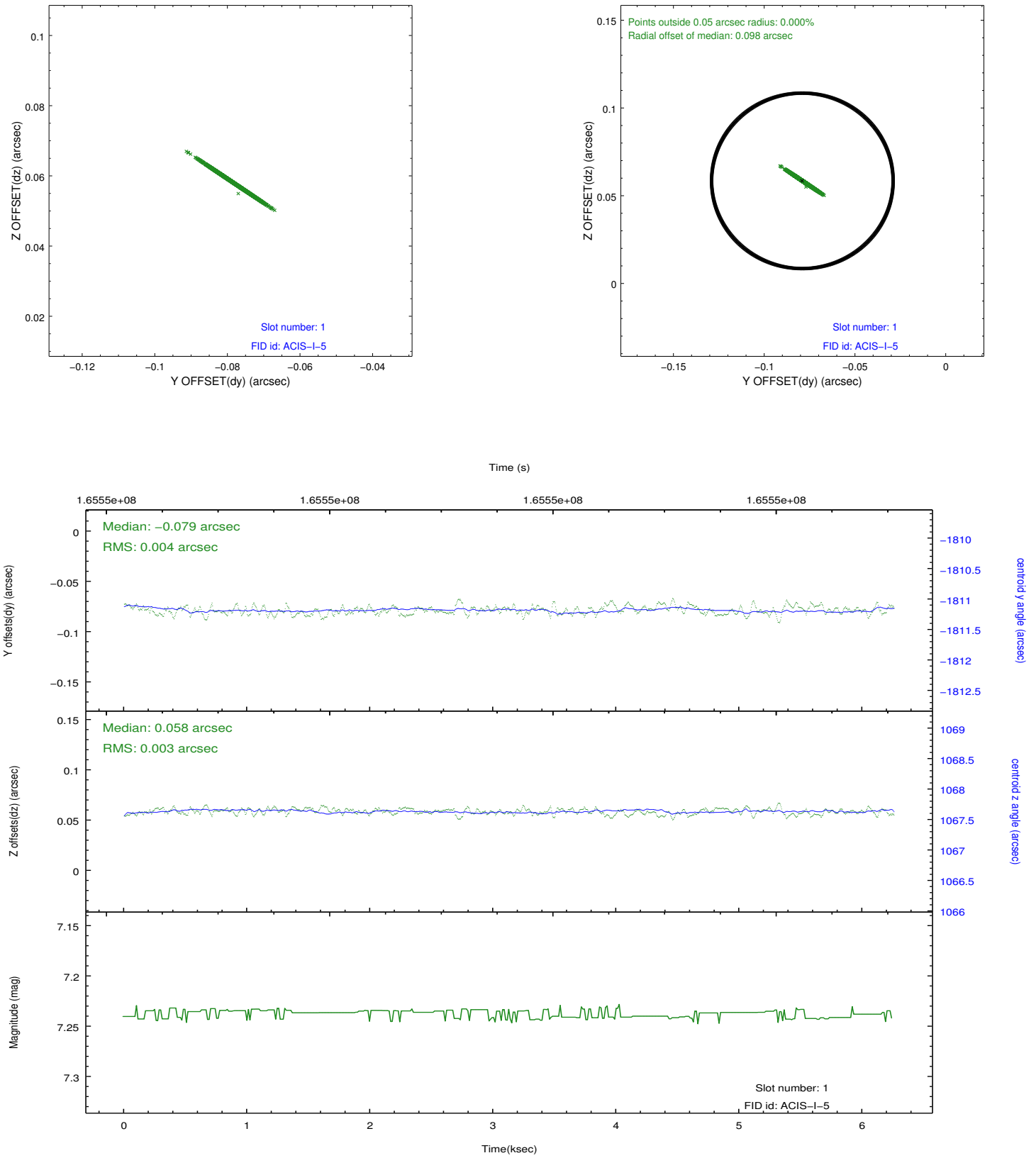


2.5 FID Slots

2.5.1 Slot 0



2.5.2 Slot 1



A Summary

A.1 Status

V&V Scientist	Beth Sundheim
V&V Date (YYYY-MM-DD)	2013.01.10
V&V Edition	1
V&V Disposition and Status	OK
V&V Charge Time	5.022

A.2 Comments

The fid light in slot 2 and the guide star in slot 3 were removed from the aspect solution due to poor data quality. The aspect solution is improved by the removal of these slots from the solution.