

V&V Reference Report

L2 ASCDS Version : 8.4.5

Observation 4263 - L2 Version 3
Chandra X-Ray Center

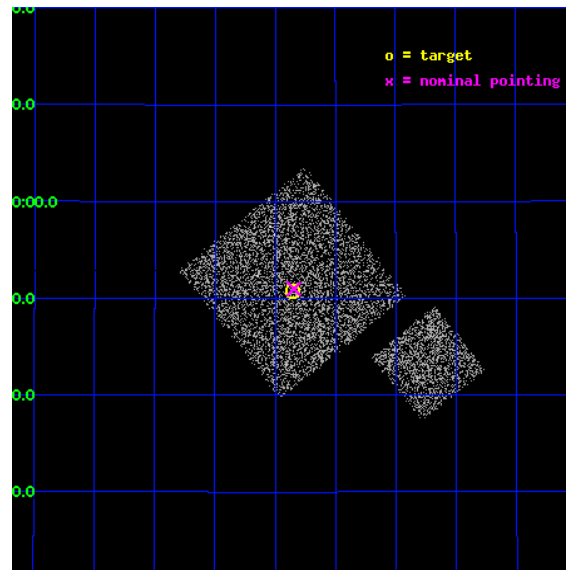
L2 Processing Date : Oct 25 2012

Contents

1	Front	2
2	OBI	3
2.1	OBI	3
2.1.1	Images	3
2.1.2	Bias	3
2.1.3	Parameters	4
2.1.4	Events	4
2.2	Compared Parameters	5
2.3	Aspect	6
2.4	Star Slots	9
2.4.1	Slot 3	9
2.4.2	Slot 4	10
2.4.3	Slot 5	11
2.4.4	Slot 6	12
2.4.5	Slot 7	13
2.5	FID Slots	14
2.5.1	Slot 0	14
2.5.2	Slot 1	15
2.5.3	Slot 2	16
A	Summary	17
A.1	Status	17
A.2	Comments	17

1 Front

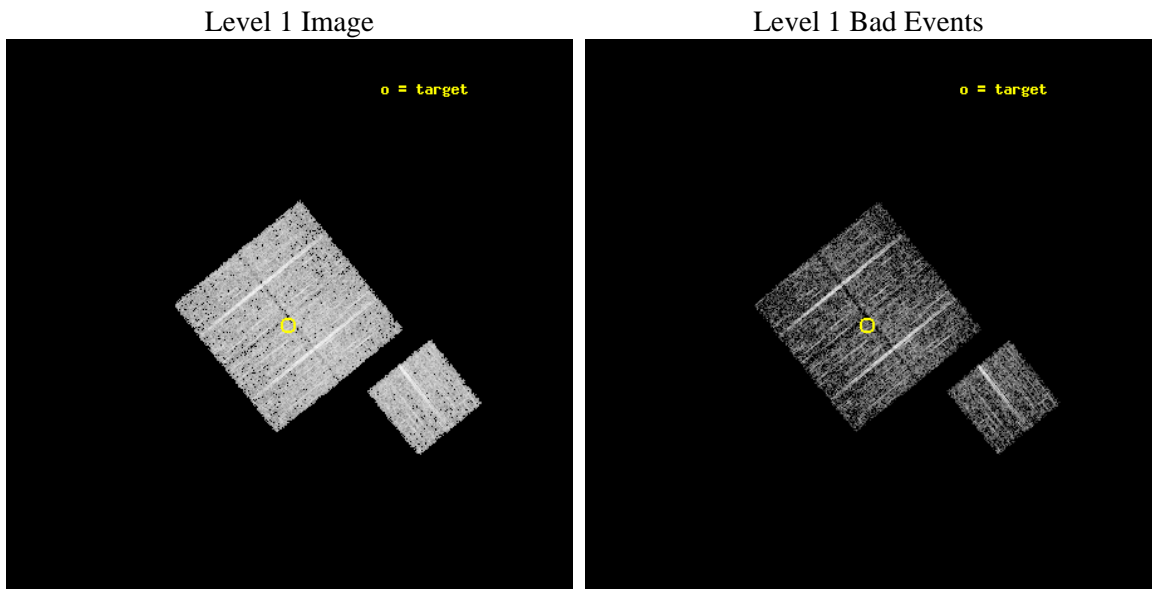
seq_num	900306	Sequence number
obs_id	4263	Observation id
title	A CHANDRA WIDE-FIELD SURVEY TO MAP THE COSMIC WEB AND INVESTIGATE THE EVOLUTION OF NUCLEAR ACCRETION	Proposal title
observer	Dr. Christine Jones	Principal investigator
object	SS10	Source name
dtcycle	0	
cycle	P	events from which exps? Prim/Second/Both
ra_targ	218.463931	Observer's specified target RA [deg]
dec_targ	32.845836	Observer's specified target Dec [deg]
ra_nom	218.4612699523	Nominal RA [deg]
dec_nom	32.849871004552	Nominal Dec [deg]
roll_nom	141.01014427622	Nominal Roll [deg]
revision	3	Processing version of data
ontime	4670.2730706334	Sum of GTIs [s]
livetime	4609.2525147606	Livetime [s]
ontime0	4673.2909507751	Sum of GTIs [s]
ontime1	4673.3319608867	Sum of GTIs [s]
ontime2	4673.37300089	Sum of GTIs [s]
ontime3	4670.2730706334	Sum of GTIs [s]
ontime6	4673.2498808801	Sum of GTIs [s]
l2events	9424	Number of level 2 events



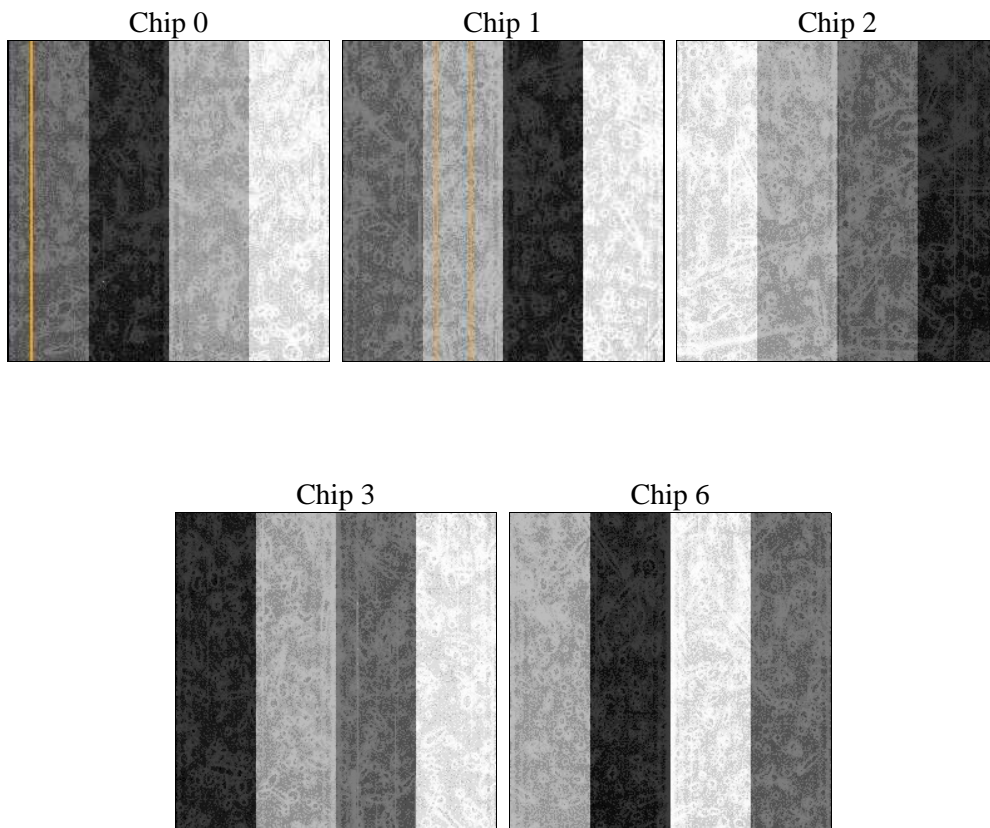
2 OBI

2.1 OBI

2.1.1 Images



2.1.2 Bias



2.1.3 Parameters

obi_num	1	Obi number	sched_exp_time	4900.000000	[s] Scheduled observation exposure time
ascdsver	8.4.5	Processing system revision	ontime	4670.2730706334	Sum of GTIs [s]
caldsver	4.5.2	 	ontime0	4673.2909507751	Sum of GTIs [s]
date	2012-10-25T23:18:49	Date and time of file creation	ontime1	4673.3319608867	Sum of GTIs [s]
revision	3	Processing version of data	ontime2	4673.373000089	Sum of GTIs [s]
			ontime3	4670.2730706334	Sum of GTIs [s]
			ontime6	4673.2498808801	Sum of GTIs [s]
			l1events	116469	Number of level 1 events

2.1.4 Events

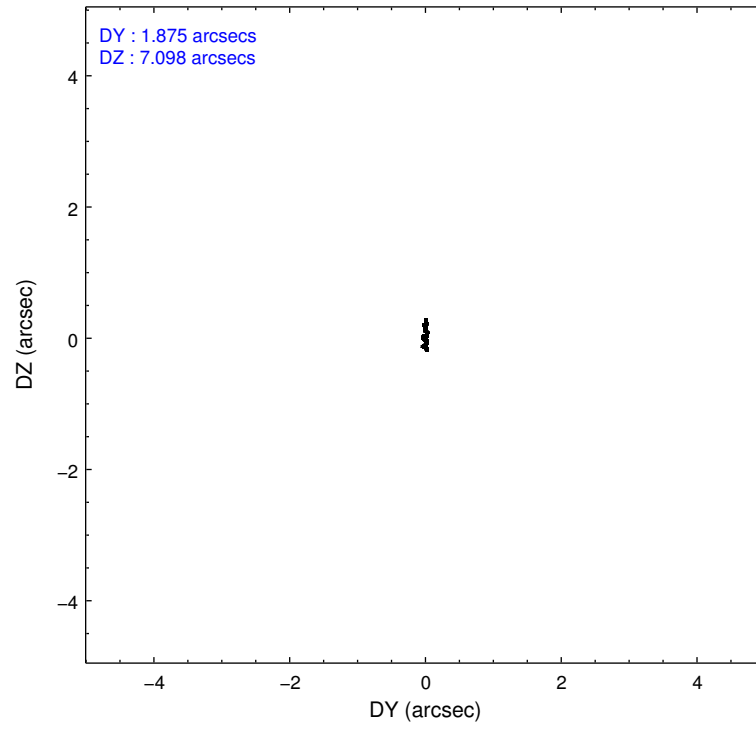
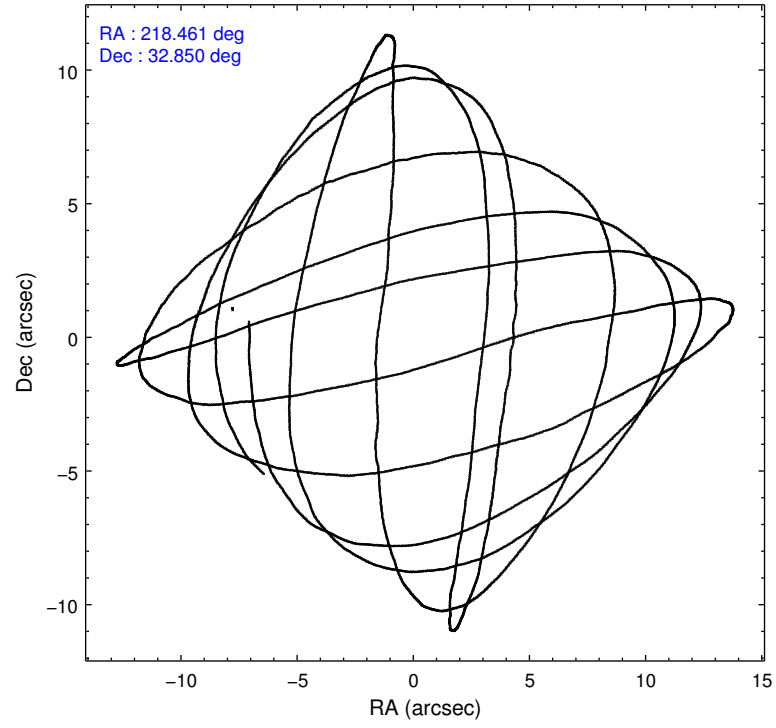
	ccd 0	ccd 1	ccd 2	ccd 3	ccd 6
level 1 events	22105	21783	25387	23365	23829
rejected events	19709	19440	23118	21283	21413
rejected %	89%	89%	91%	91%	89%

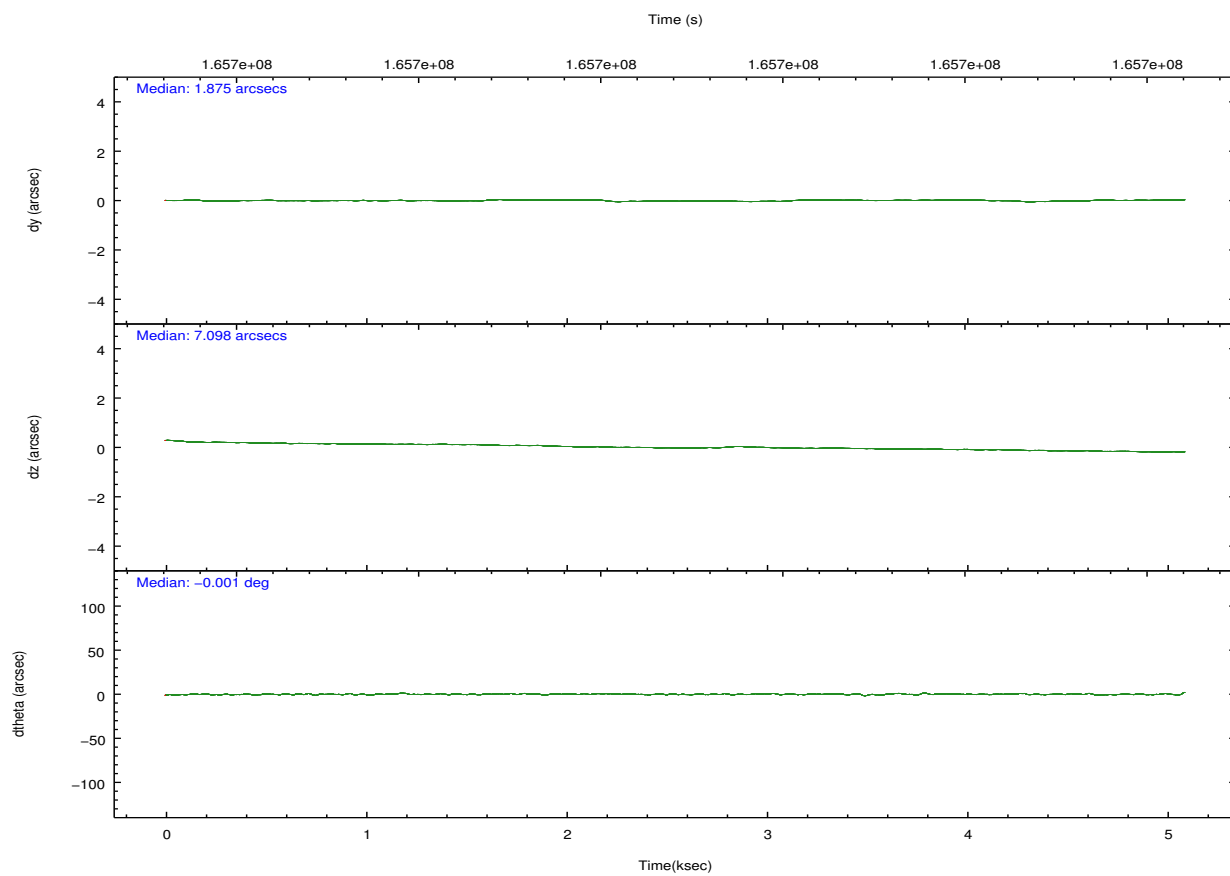
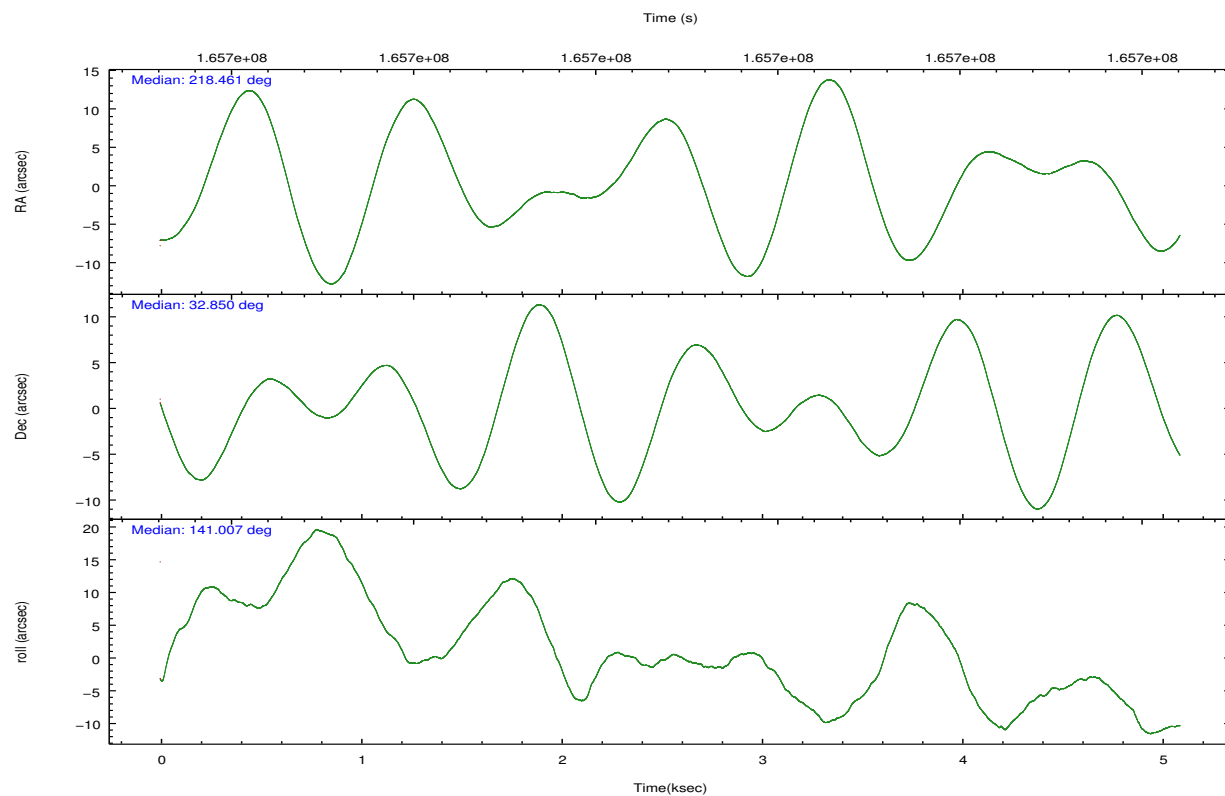
	ccd 0	ccd 1	ccd 2	ccd 3	ccd 6
grade 0 events	915	810	874	782	909
	4%	3%	3%	3%	3%
grade 1 events	11	10	14	14	8
	0%	0%	0%	0%	0%
grade 2 events	544	500	525	458	510
	2%	2%	2%	1%	2%
grade 3 events	270	306	271	237	260
	1%	1%	1%	1%	1%
grade 4 events	267	281	247	223	277
	1%	1%	0%	0%	1%
grade 5 events	701	730	688	781	765
	3%	3%	2%	3%	3%
grade 6 events	403	447	354	384	460
	1%	2%	1%	1%	1%
grade 7 events	18994	18699	22414	20486	20640
	85%	85%	88%	87%	86%

2.2 Compared Parameters

Parameter	Planned	Actual	Parameter	Planned	Actual
Instrument	ACIS	ACIS	Obspar format version number	7	7
Detector	ACIS-01236	ACIS-01236	Obspar file type	PREDICTED	ACTUAL
Grating	NONE	NONE	Obspar update status	NONE	UPDATED
Data mode	VFAINT	VFAINT	Number of optional ACIS chips dropped	0	0
Observation mode	POINTING	POINTING	On-chip summing requested	N	N
[deg] Pointing RA	218.493551	218.4612699522985	Subarray requested	NONE	NONE
[deg] Pointing Dec	32.845748	32.84987100455209	Alternating exposures requested	N	N
[deg] Pointing Roll	140.783939	141.0101442762172	[s] Primary exposure time	0.000000	3.1
[mm] SIM focus pos	-0.782348	-0.7809083437167272			
[mm] SIM defocus	0	0.001439871863259334			
[mm] SIM translation stage pos	-233.592463	-233.5874344608287			
[mm] SIM translation stage offset	0	-0.005018542100998502			
[s] Observation start time (MET)	165695047.184000	165694612.50026			
Observation start date	2003-04-02T18:23:03	2003-04-02T18:16:52			
[s] Observation end time (MET)	165699947.184000	165700081.38799			
Observation end date	2003-04-02T19:44:43	2003-04-02T19:48:01			
Read mode	TIMED	TIMED			

2.3 Aspect



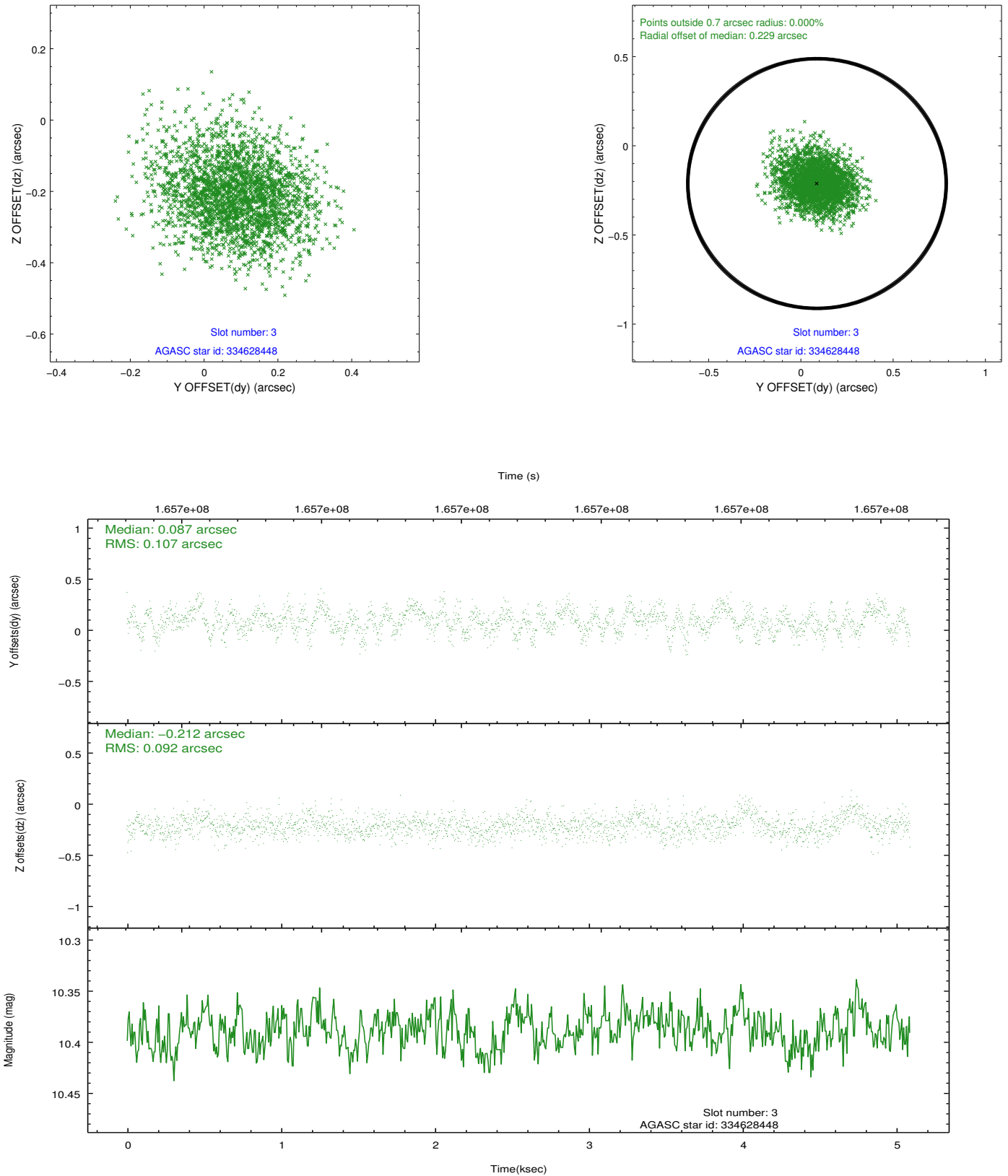


Slot Statistics

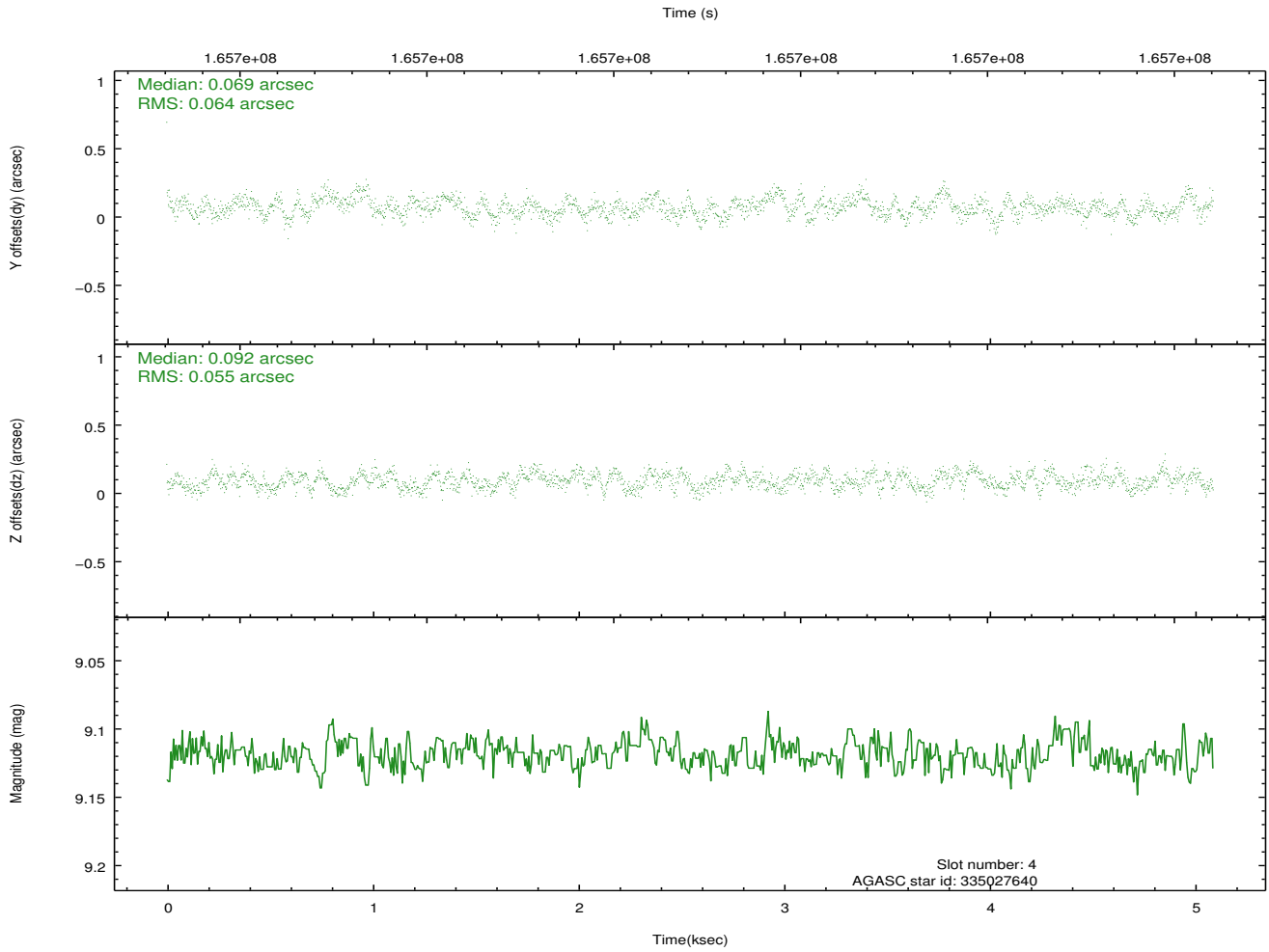
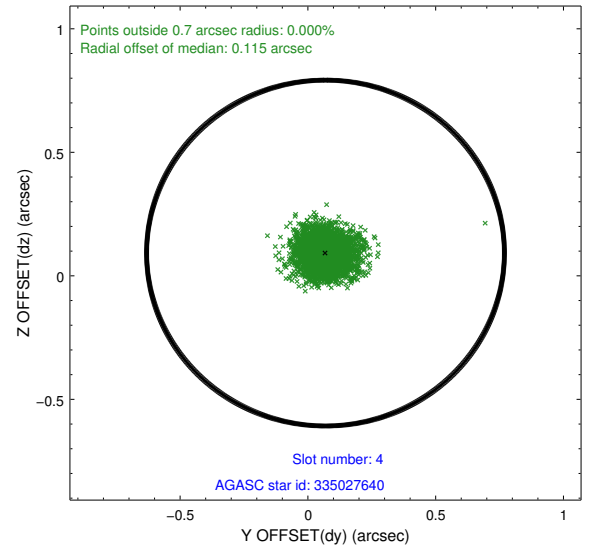
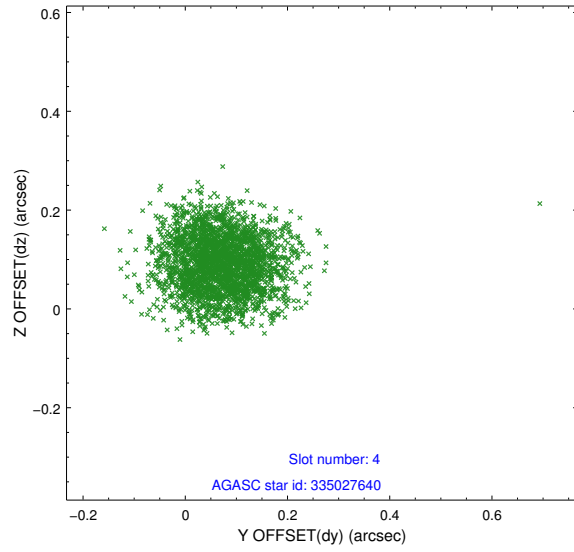
slot	status	id	mag	n_pts	med_dy	med_dz	dr1	dr2	ra	dec	mean_y	mean_z
0	FID	ACIS-I-1	7.24	1242	0.001	0.022	0.008	0.014	0.000000	0.000000	937.93	-830.51
1	FID	ACIS-I-5	7.23	1242	-0.059	0.051	0.006	0.011	0.000000	0.000000	-1809.53	1066.48
2	FID	ACIS-I-6	7.26	1242	-0.033	-0.003	0.008	0.013	0.000000	0.000000	402.21	1712.23
3	GUIDE	334628448	10.39	2482	0.087	-0.212	0.150	0.244	218.514038	32.100683	-1744.23	2038.14
4	GUIDE	335027640	9.12	2483	0.069	0.092	0.090	0.143	218.092211	33.193770	1729.77	-207.30
5	GUIDE	335028616	9.97	2477	0.037	0.040	0.110	0.192	218.529874	33.175085	665.39	-987.87
6	GUIDE	335029384	8.50	2484	-0.145	-0.076	0.056	0.091	217.848061	33.088477	2064.67	548.73
7	GUIDE	335160704	10.58	2407	-0.043	0.160	0.161	0.257	219.376924	33.063739	-1560.55	-2301.81

2.4 Star Slots

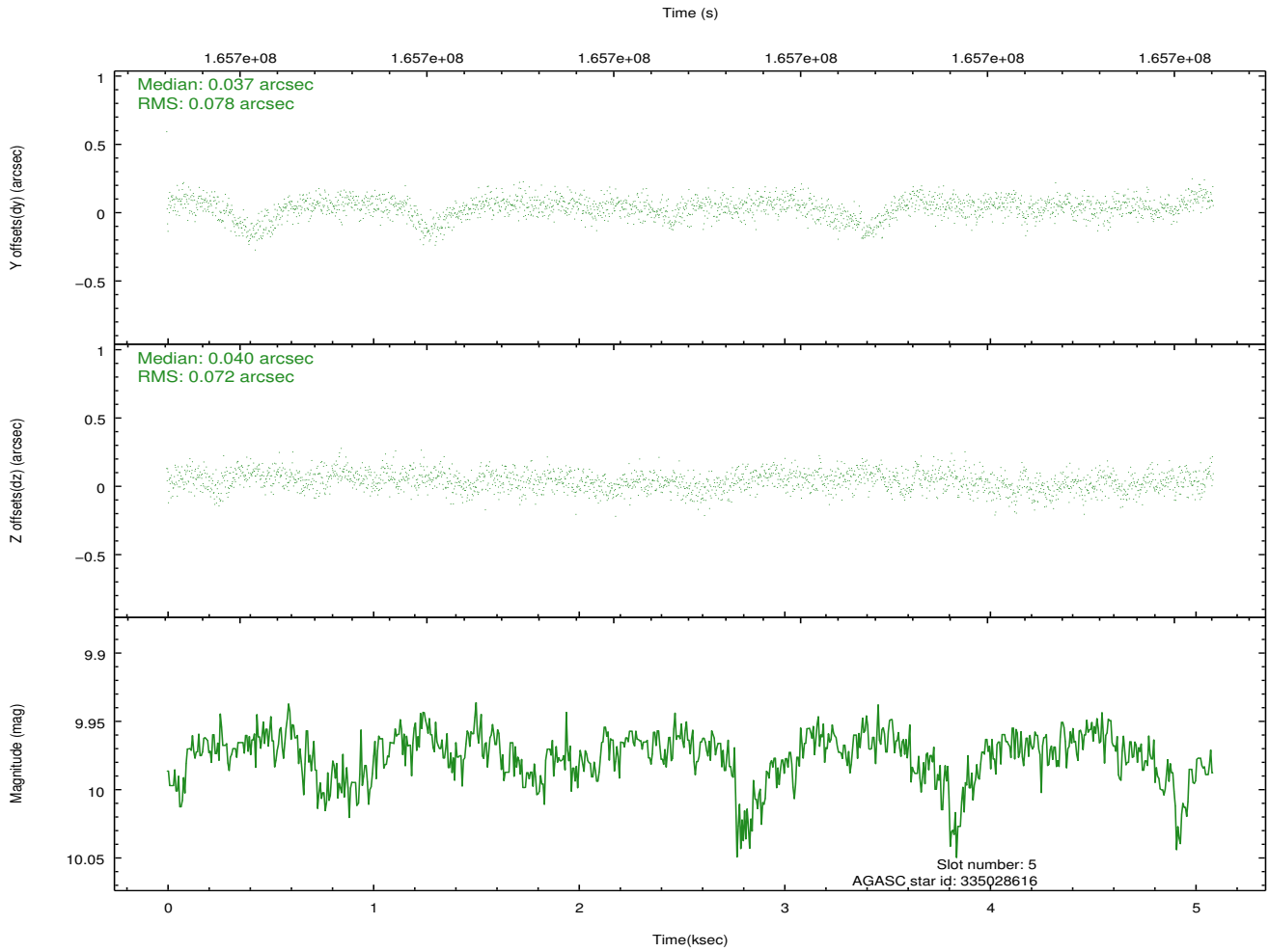
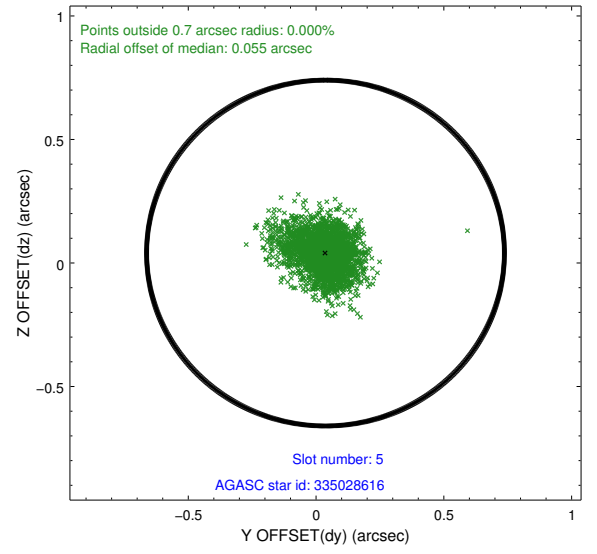
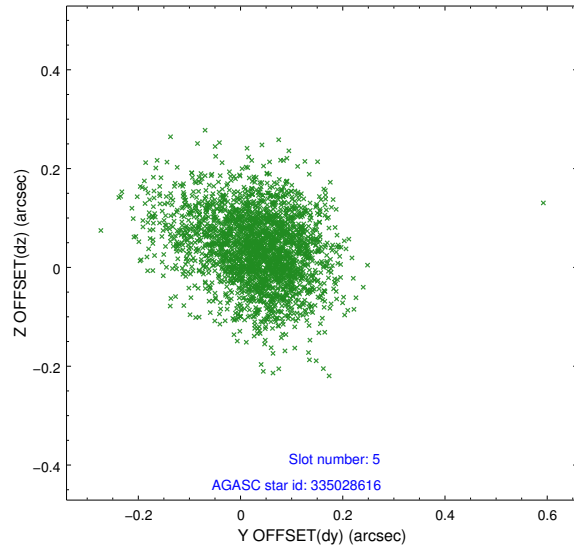
2.4.1 Slot 3



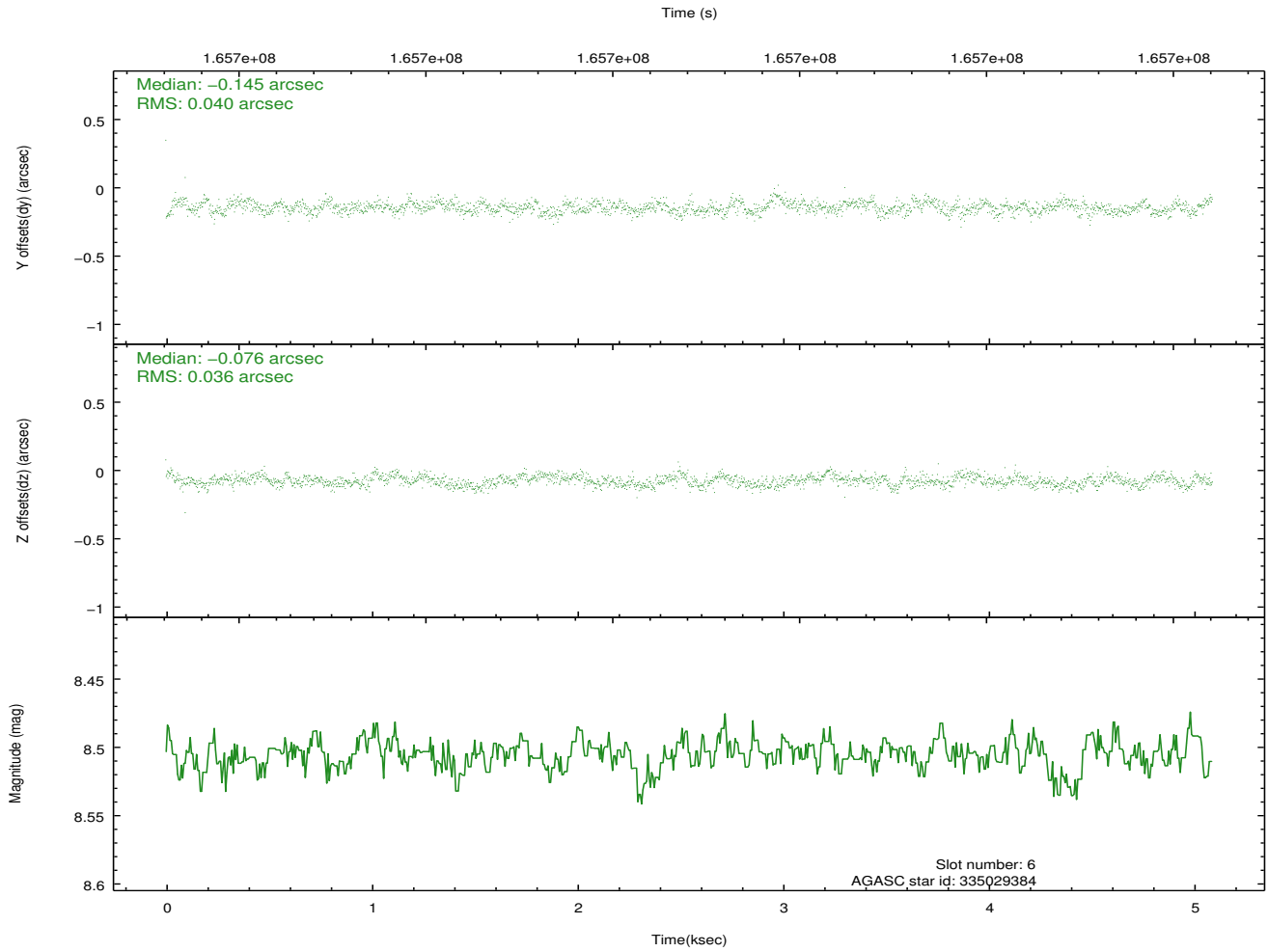
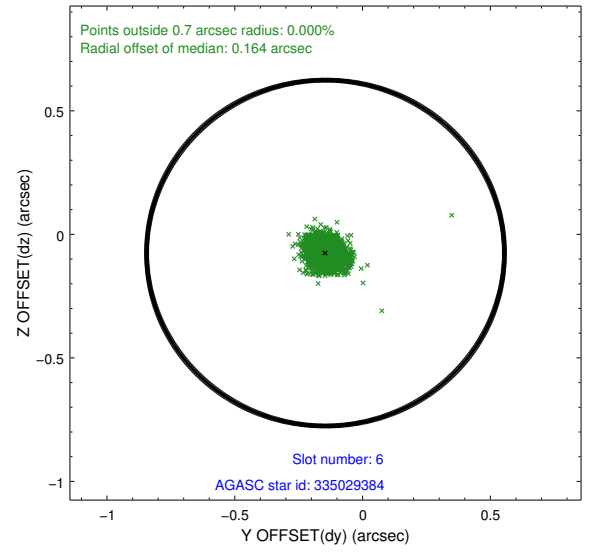
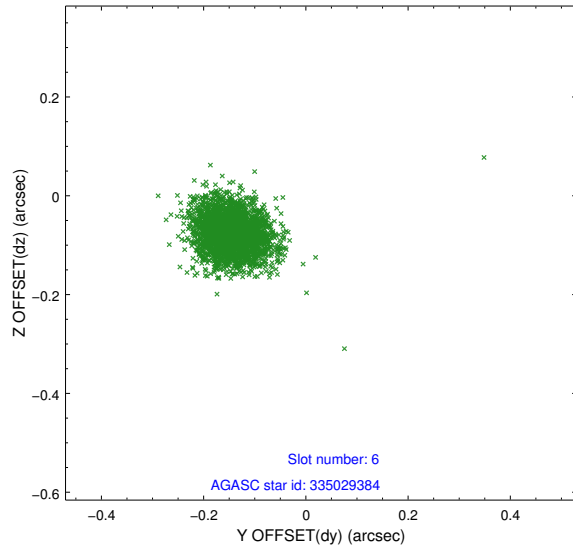
2.4.2 Slot 4



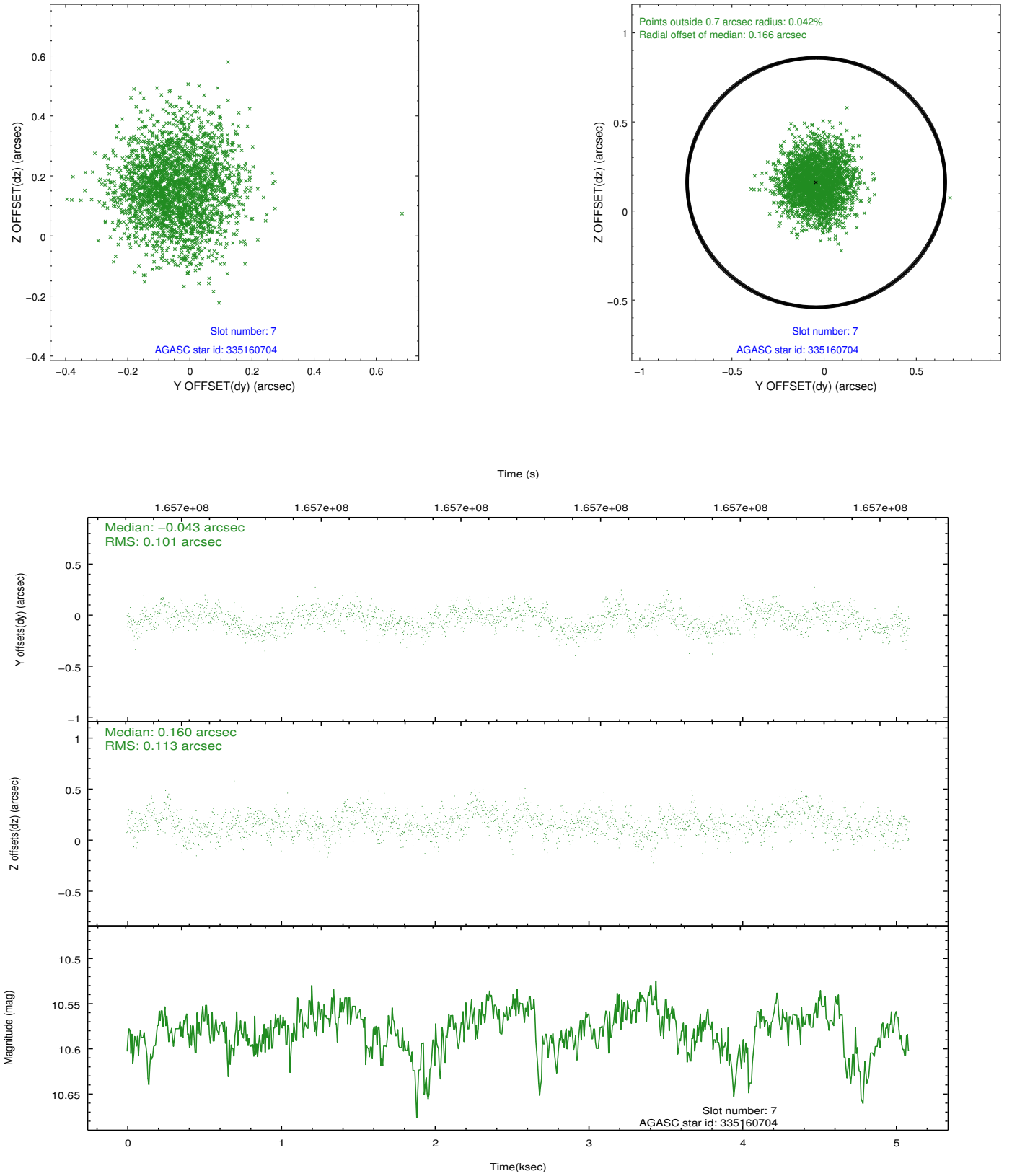
2.4.3 Slot 5



2.4.4 Slot 6

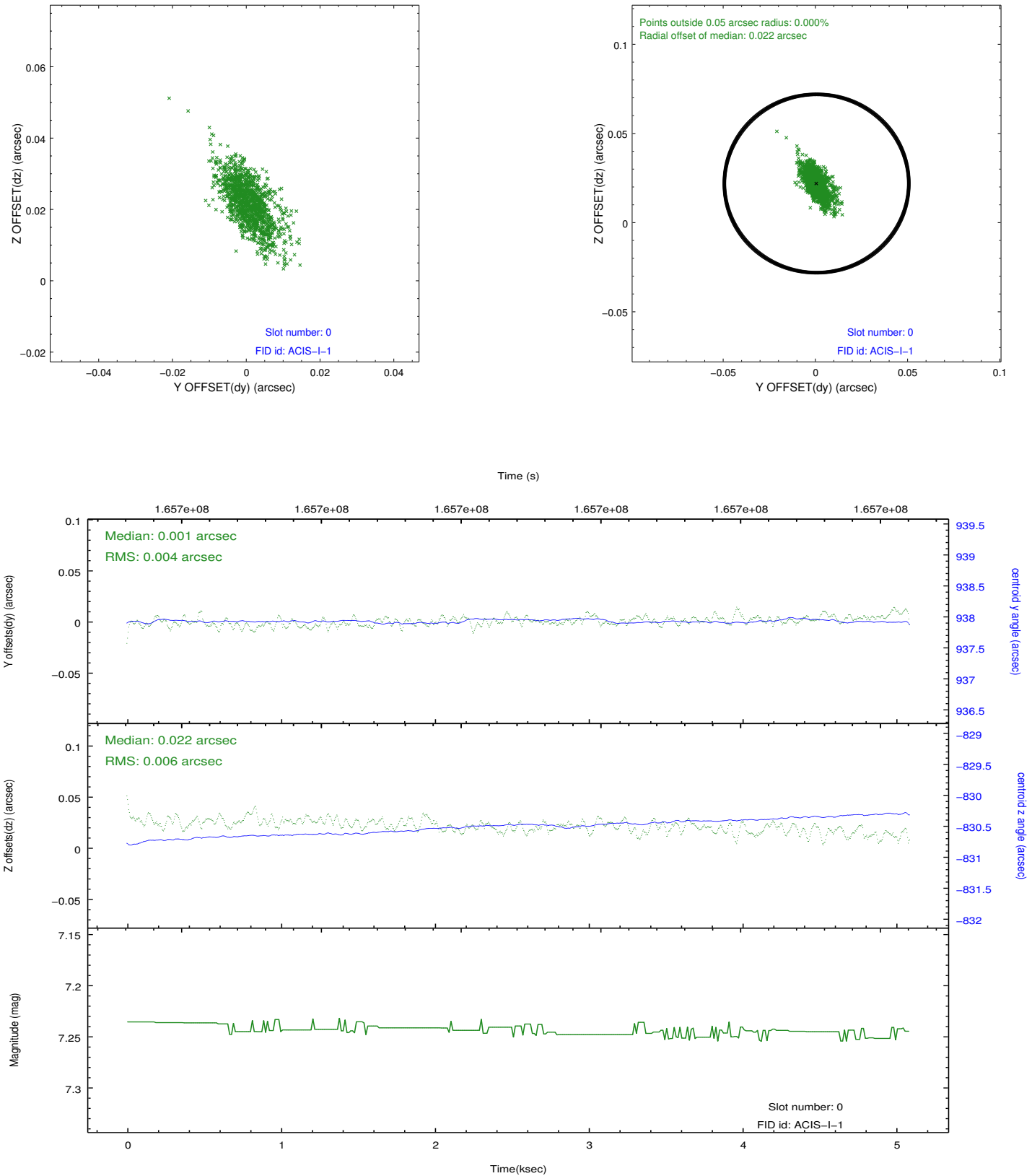


2.4.5 Slot 7

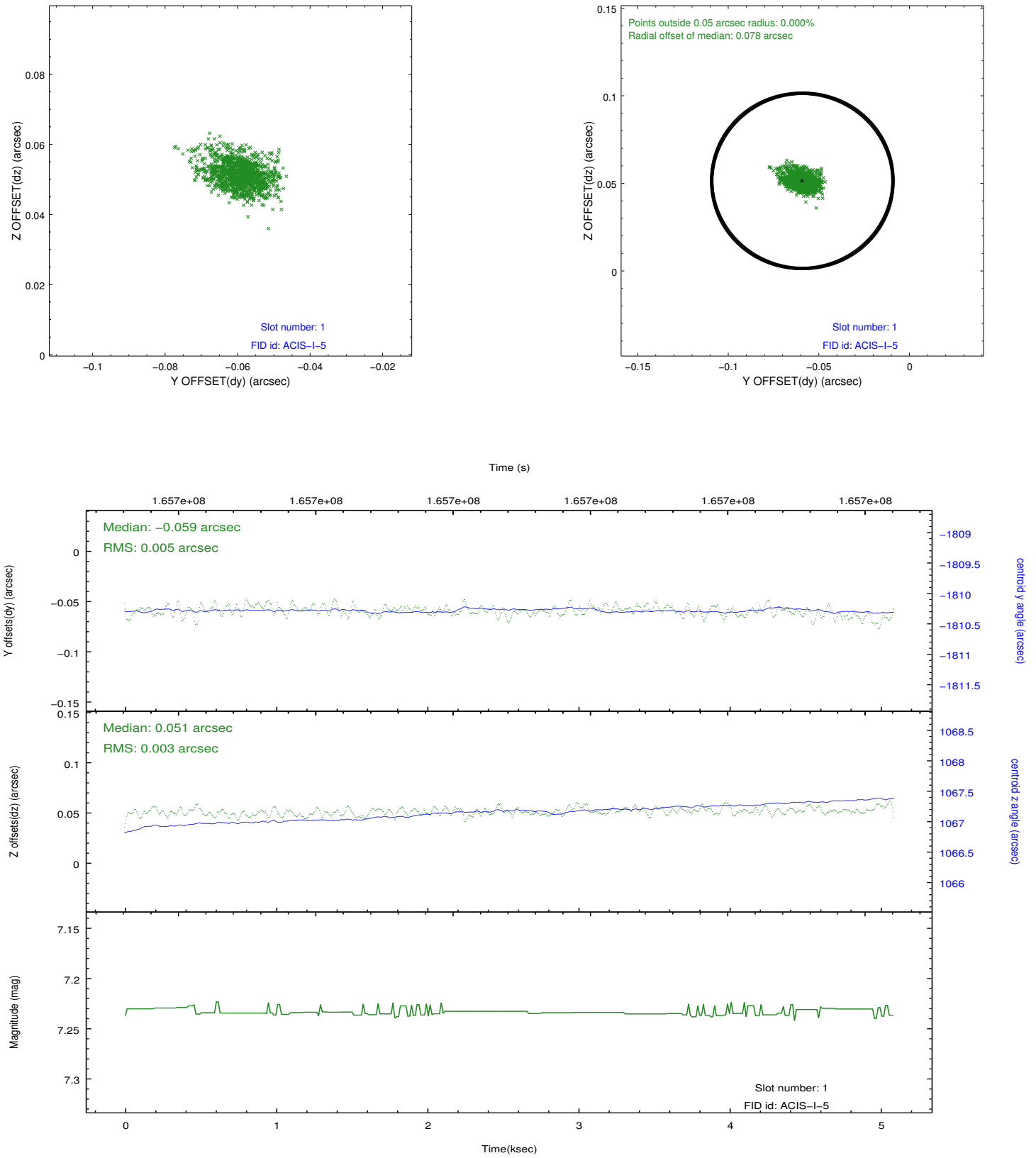


2.5 FID Slots

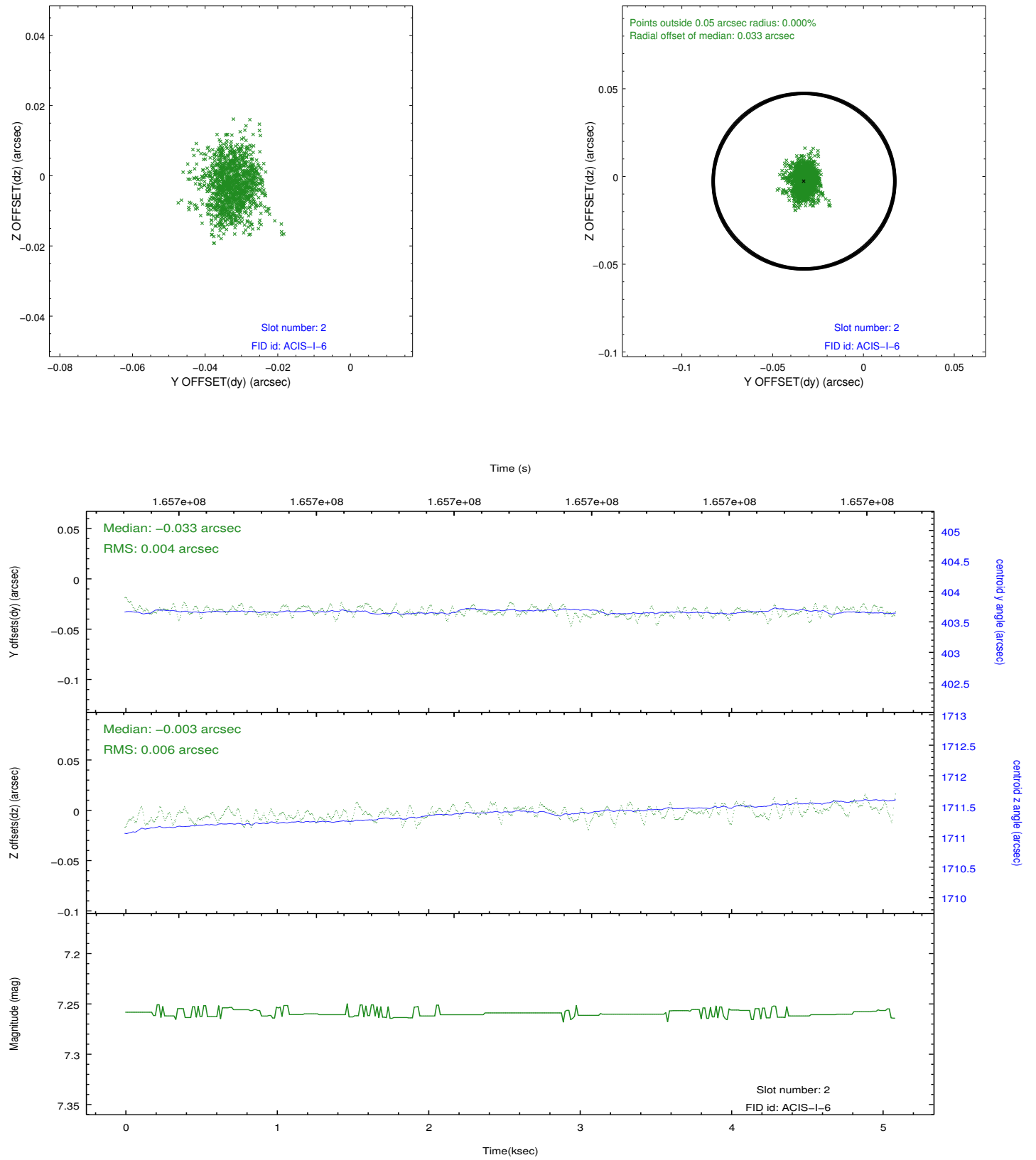
2.5.1 Slot 0



2.5.2 Slot 1



2.5.3 Slot 2



A Summary

A.1 Status

V&V Scientist	Jen Lauer
V&V Date (YYYY-MM-DD)	2012.11.09
V&V Edition	1
V&V Disposition and Status	OK
V&V Charge Time	4.675

A.2 Comments