

V&V Reference Report

L2 ASCDS Version : 7.6.8

Observation 4254 - L2 Version 001
Chandra X-Ray Center

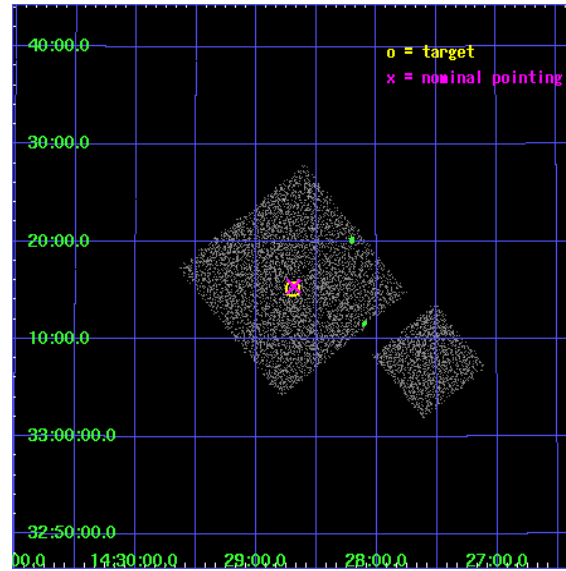
L2 Processing Date : Jul 30 2006

Contents

1	Front	2
2	OBI	3
2.1	OBI	3
2.1.1	Images	3
2.1.2	Bias	3
2.1.3	Parameters	4
2.1.4	Events	4
2.2	Compared Parameters	5
2.3	Aspect	6
2.4	Star Slots	9
2.4.1	Slot 3	9
2.4.2	Slot 4	10
2.4.3	Slot 5	11
2.4.4	Slot 6	12
2.4.5	Slot 7	13
2.5	FID Slots	14
2.5.1	Slot 0	14
2.5.2	Slot 1	15
2.5.3	Slot 2	16
3	Point Sources	17
A	Summary	18
A.1	Status	18
A.2	Comments	18

1 Front

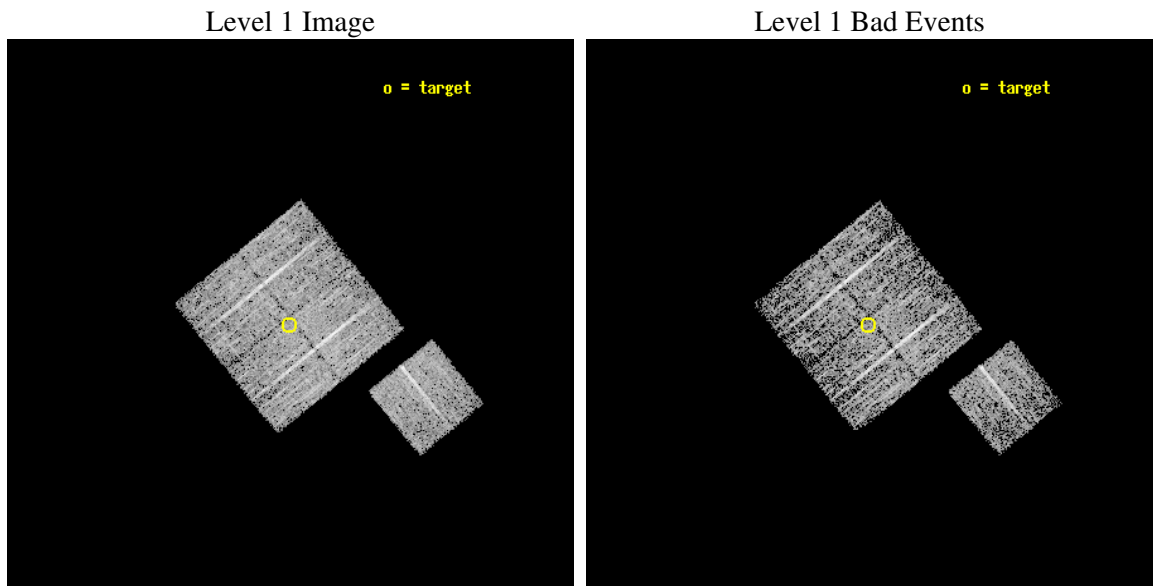
seq_num	900297
obs_id	4254
title	A CHANDRA WIDE-FIELD SURVEY TO MAP THE COSMIC WEB AND INVESTIGATE THE EVOLUTION OF NUCLEAR ACCRETION
observer	Dr. Christine Jones
object	SS19
dtcycle	0
cycle	P
ra_targ	217.17418
dec_targ	33.253224
ra_nom	217.17156020823
dec_nom	33.257300118452
roll_nom	141.01013080009
revision	2
ontime	4575.5999912024
livetime	4515.8164088096
ontime0	4575.5999912024
ontime1	4575.5999912024
ontime2	4575.5999912024
ontime3	4575.5999912024
ontime6	4575.5999912024
l2events	9081



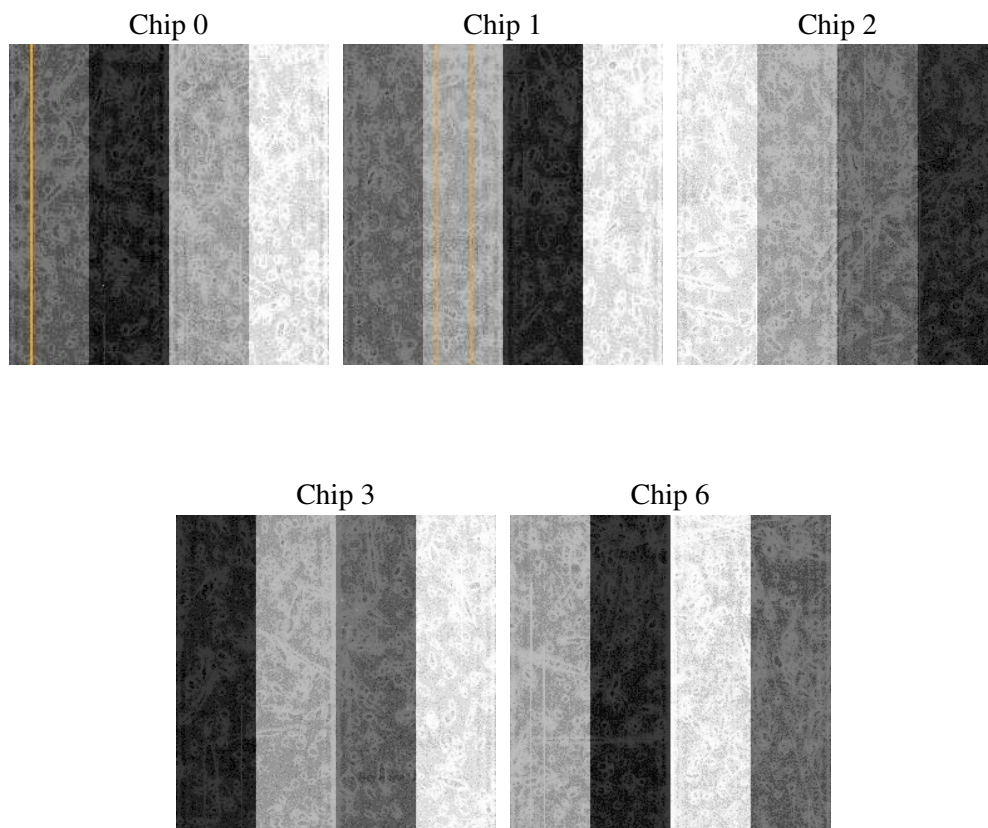
2 OBI

2.1 OBI

2.1.1 Images



2.1.2 Bias



2.1.3 Parameters

obi_num	1
ascdsver	7.6.8
caldsver	3.2.2
date	2006-07-30T07:32:44
revision	2

sched_exp_time	4800.000000
ontime	4579.584733218
ontime0	4579.584733218
ontime1	4579.584733218
ontime2	4579.584733218
ontime3	4579.584733218
ontime6	4582.7257533371
l1events	113726

2.1.4 Events

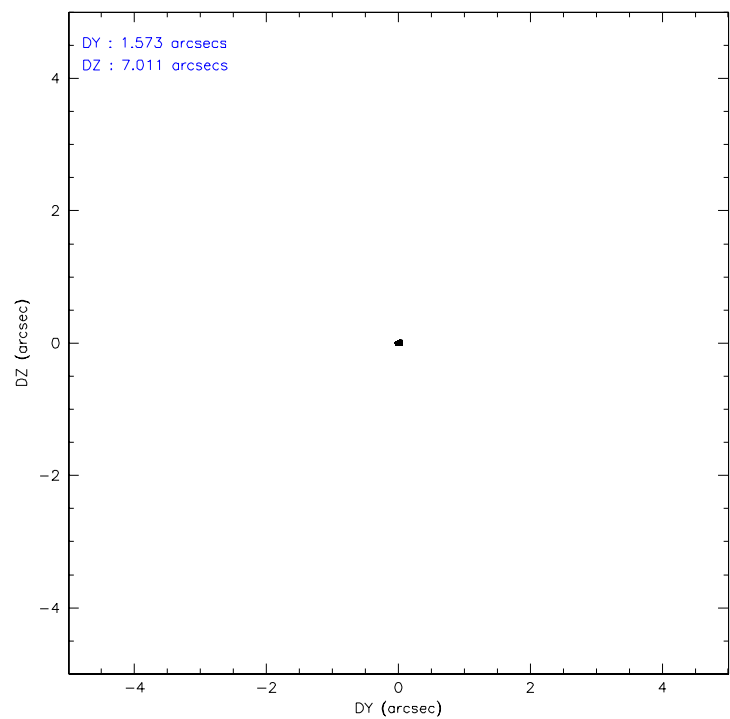
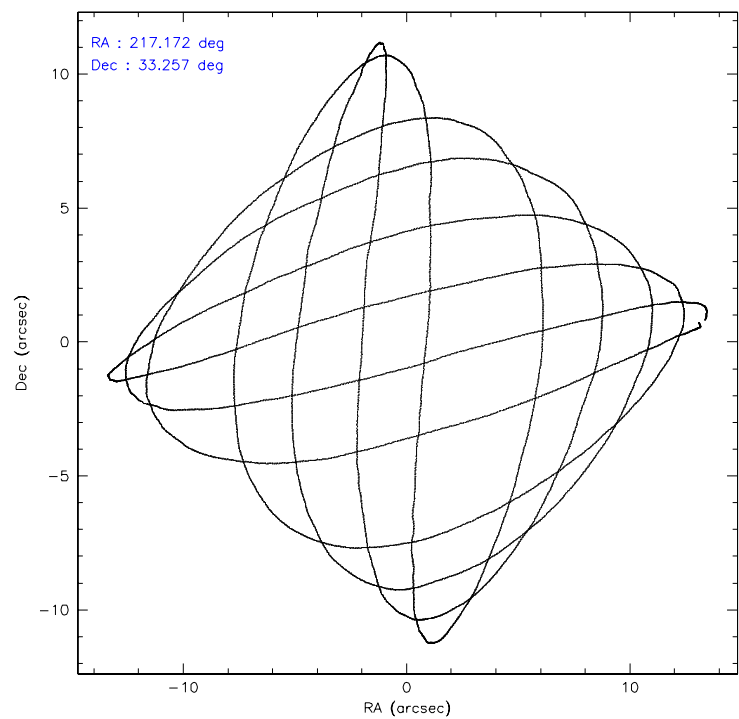
	ccd 0	ccd 1	ccd 2	ccd 3	ccd 6
level 1 events	22255	21271	24746	23296	22158
rejected events	20077	18973	22497	21219	19901
rejected %	90%	89%	90%	91%	89%

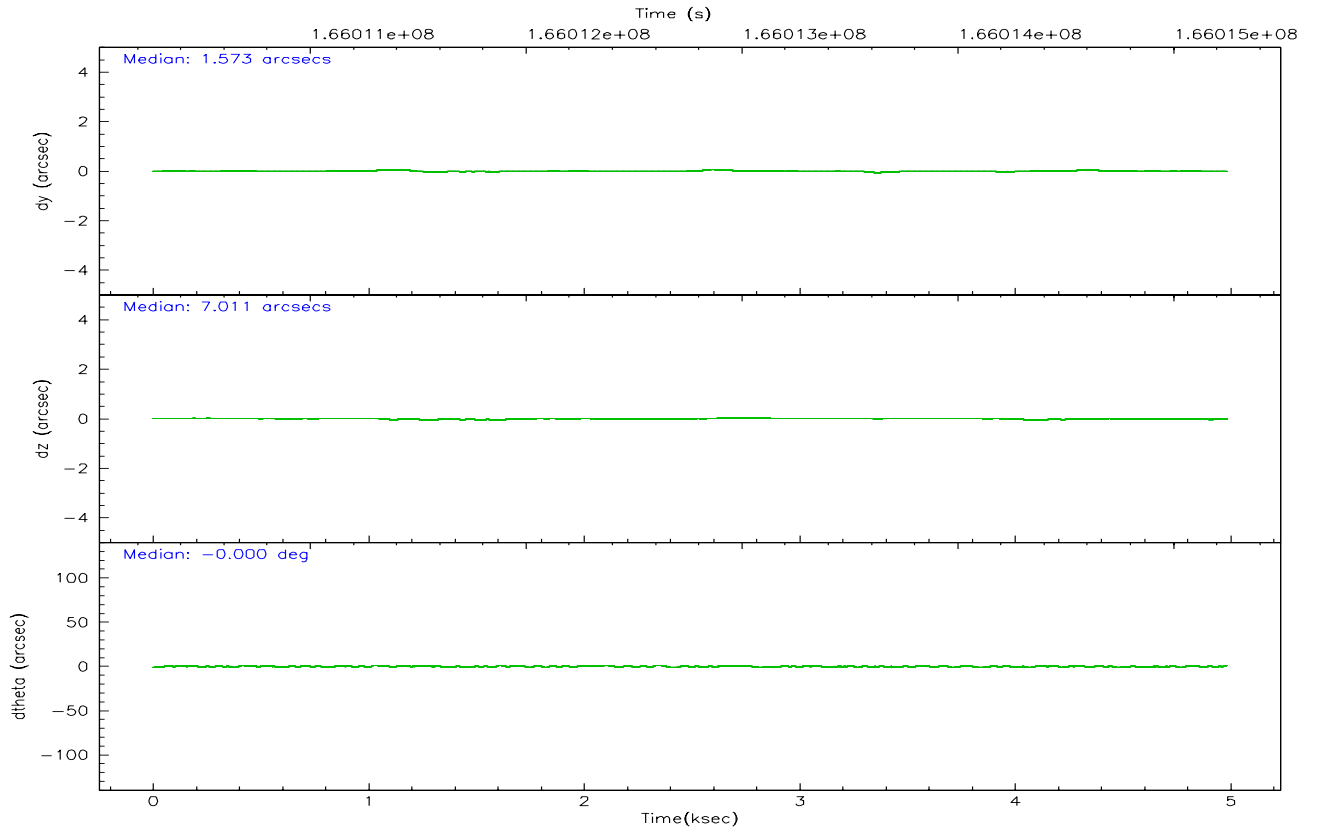
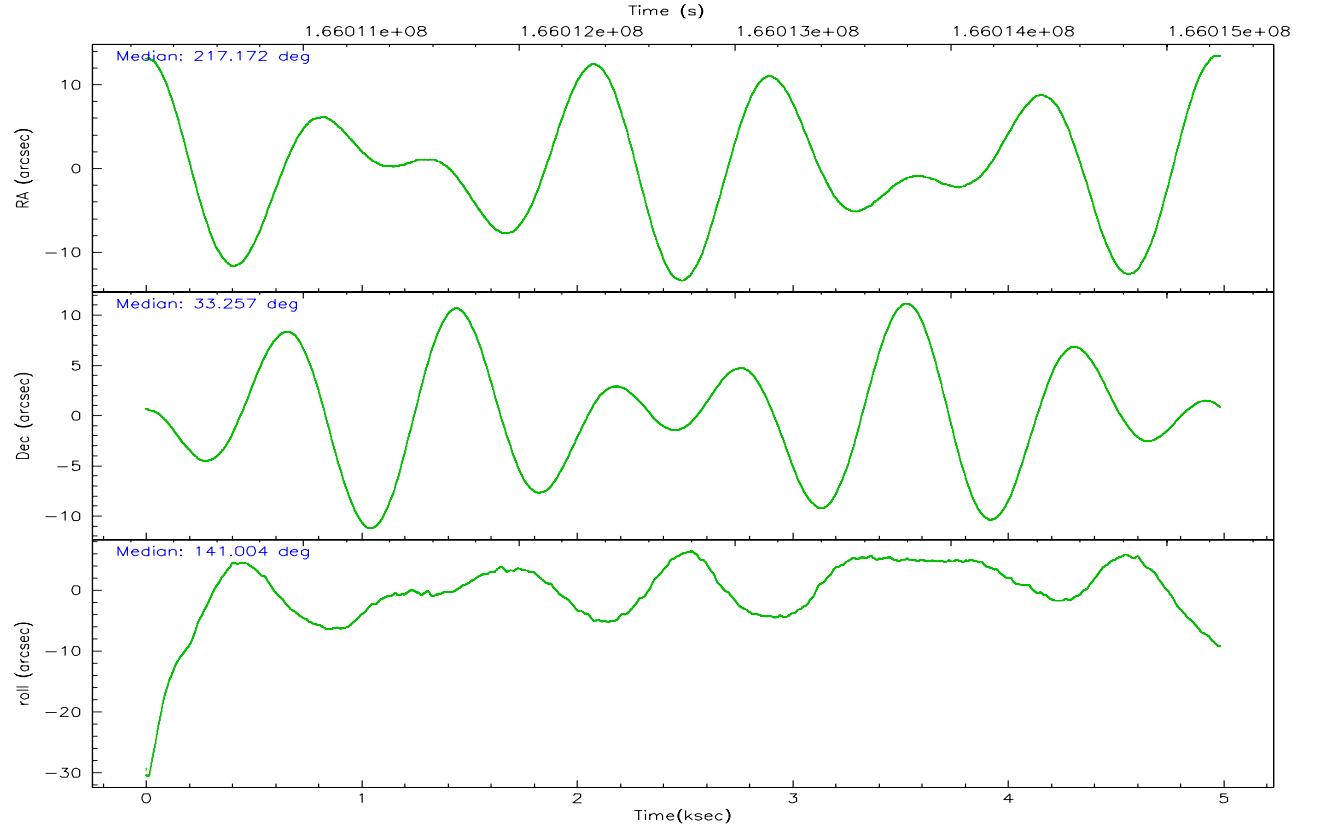
	ccd 0	ccd 1	ccd 2	ccd 3	ccd 6
grade 0 events	813	814	866	777	804
	3%	3%	3%	3%	3%
grade 1 events	11	15	13	14	10
	0%	0%	0%	0%	0%
grade 2 events	512	524	530	406	516
	2%	2%	2%	1%	2%
grade 3 events	272	258	257	259	264
	1%	1%	1%	1%	1%
grade 4 events	199	275	222	233	252
	0%	1%	0%	1%	1%
grade 5 events	658	733	597	769	700
	2%	3%	2%	3%	3%
grade 6 events	382	427	375	402	425
	1%	2%	1%	1%	1%
grade 7 events	19408	18225	21886	20436	19187
	87%	85%	88%	87%	86%

2.2 Compared Parameters

Parameter	Planned	Actual	Parameter	Planned	Actual
Instrument	ACIS	ACIS	Obspar format version number	6	6
Detector	ACIS-01236	ACIS-01236	Obspar file type	PREDICTED	ACTUAL
Grating	NONE	NONE	Obspar update status	NONE	UPDATED
Data mode	VFAINT	VFAINT	On-chip summing requested	N	N
Observation mode	POINTING	POINTING	Subarray requested	NONE	NONE
Pointing RA	217.203943	217.1715602082279	Alternating exposures requested	N	N
Pointing Dec	33.253145	33.25730011845211	Primary exposure time	0.000000	3.1
Pointing Roll	140.783681	141.0101308000893			
SIM focus pos (mm)	-0.782348	-0.7809083437167272			
SIM defocus (mm)	0	0.001439871863259334			
SIM translation stage pos (mm)	-233.592463	-233.5874344608287			
SIM translation stage offset (mm)	0	-0.005018542100998502			
Observation start time	166010455.184000	166010079.32608			
Observation start date	2003-04-06T09:59:51	2003-04-06T09:54:39			
Observation end time	166015255.184000	166015389.3388			
Observation end date	2003-04-06T11:19:51	2003-04-06T11:23:09			
Read mode	TIMED	TIMED			

2.3 Aspect



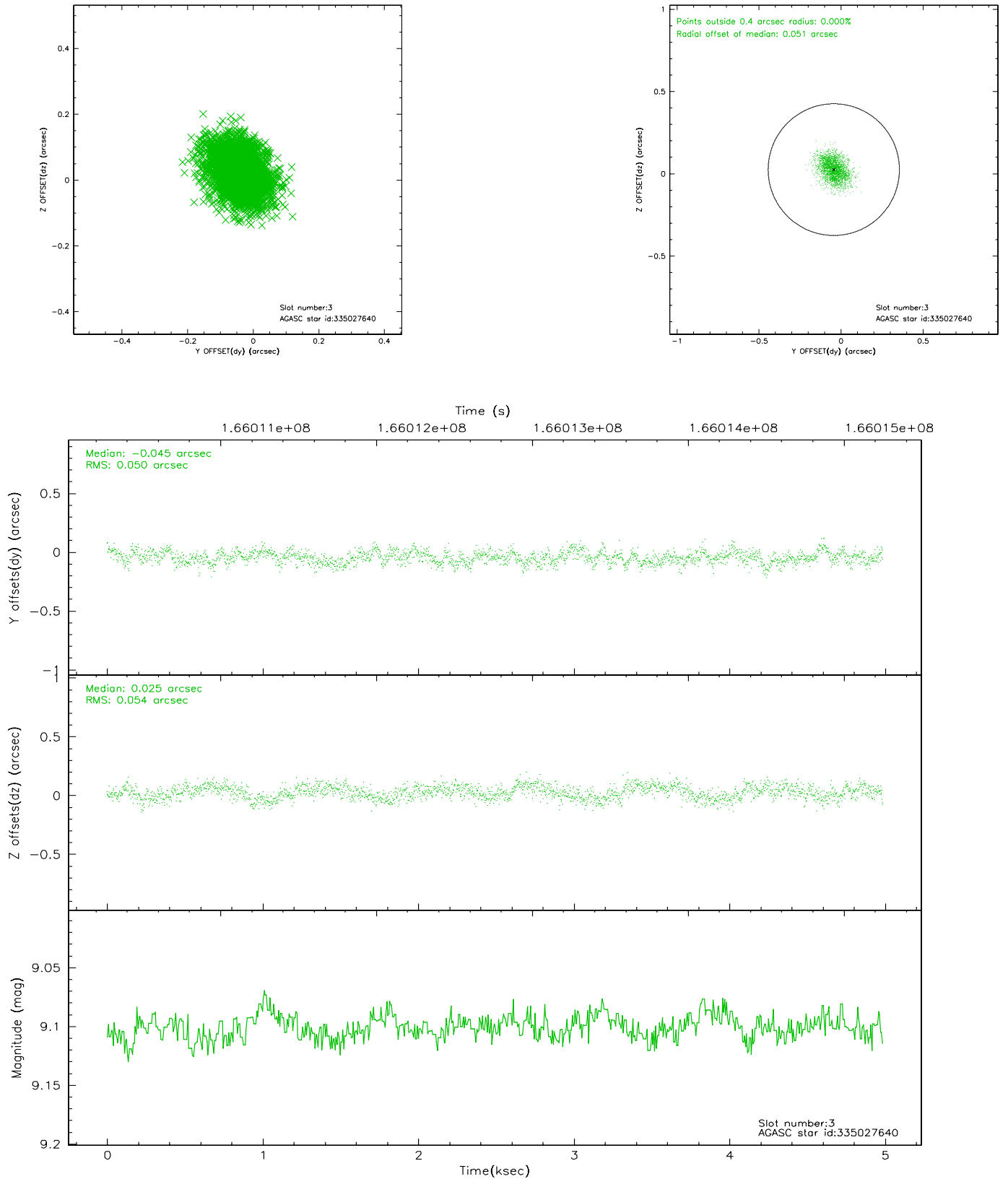


Slot Statistics

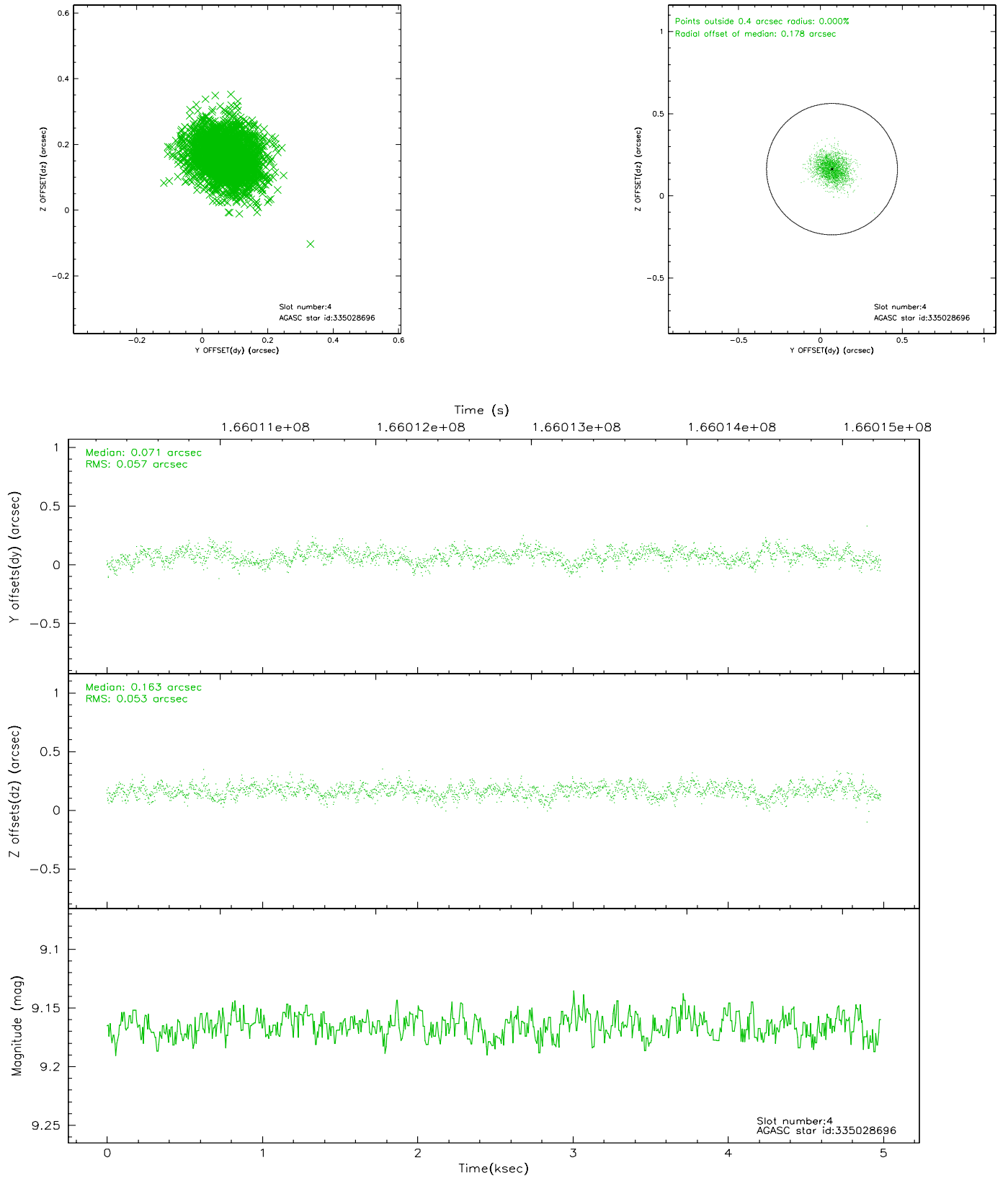
slot	status	id	mag	n_pts	med_dy	med_dz	dr1	dr2	ra	dec	mean_y	mean_z
0	FID	ACIS-I-1	7.25	1216	-0.011	0.039	0.006	0.010	0.000000	0.000000	938.22	-830.39
1	FID	ACIS-I-5	7.24	1216	-0.045	0.046	0.006	0.010	0.000000	0.000000	-1809.19	1066.57
2	FID	ACIS-I-6	7.26	1216	-0.035	-0.014	0.007	0.012	0.000000	0.000000	402.49	1712.34
3	GUIDE	335027640	9.10	2433	-0.045	0.025	0.080	0.128	218.092211	33.193770	-2200.85	-1535.16
4	GUIDE	335028696	9.17	2433	0.071	0.163	0.083	0.135	217.260519	33.844112	1213.69	-1755.45
5	GUIDE	335029384	8.49	2433	-0.000	0.069	0.061	0.100	217.848061	33.088477	-1875.54	-774.34
6	GUIDE	335029808	9.06	2433	-0.017	-0.054	0.074	0.121	216.789548	33.180488	802.93	990.06
7	GUIDE	335022112	9.23	2419	-0.008	-0.203	0.100	0.151	216.659296	32.794758	236.54	2317.80

2.4 Star Slots

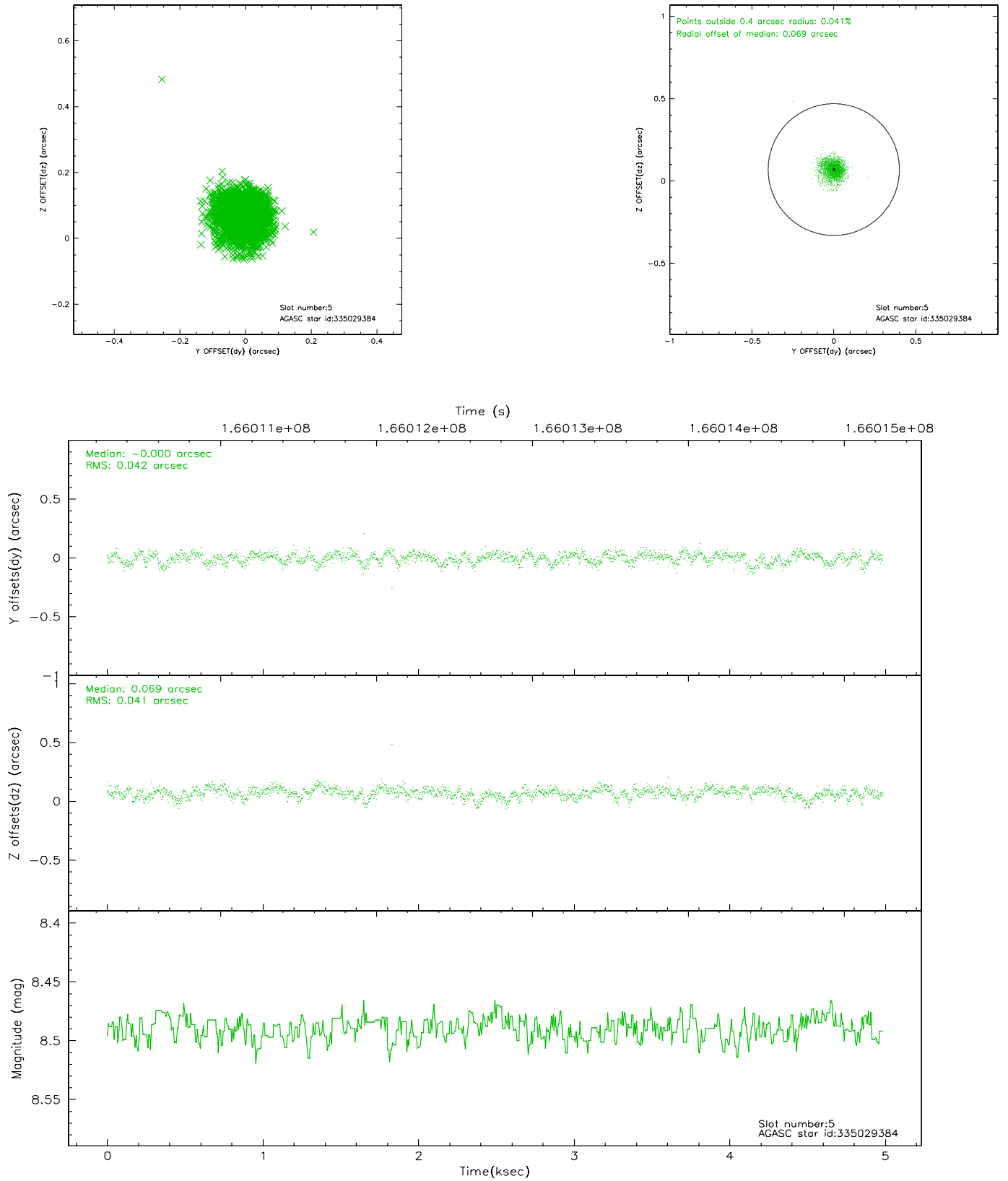
2.4.1 Slot 3



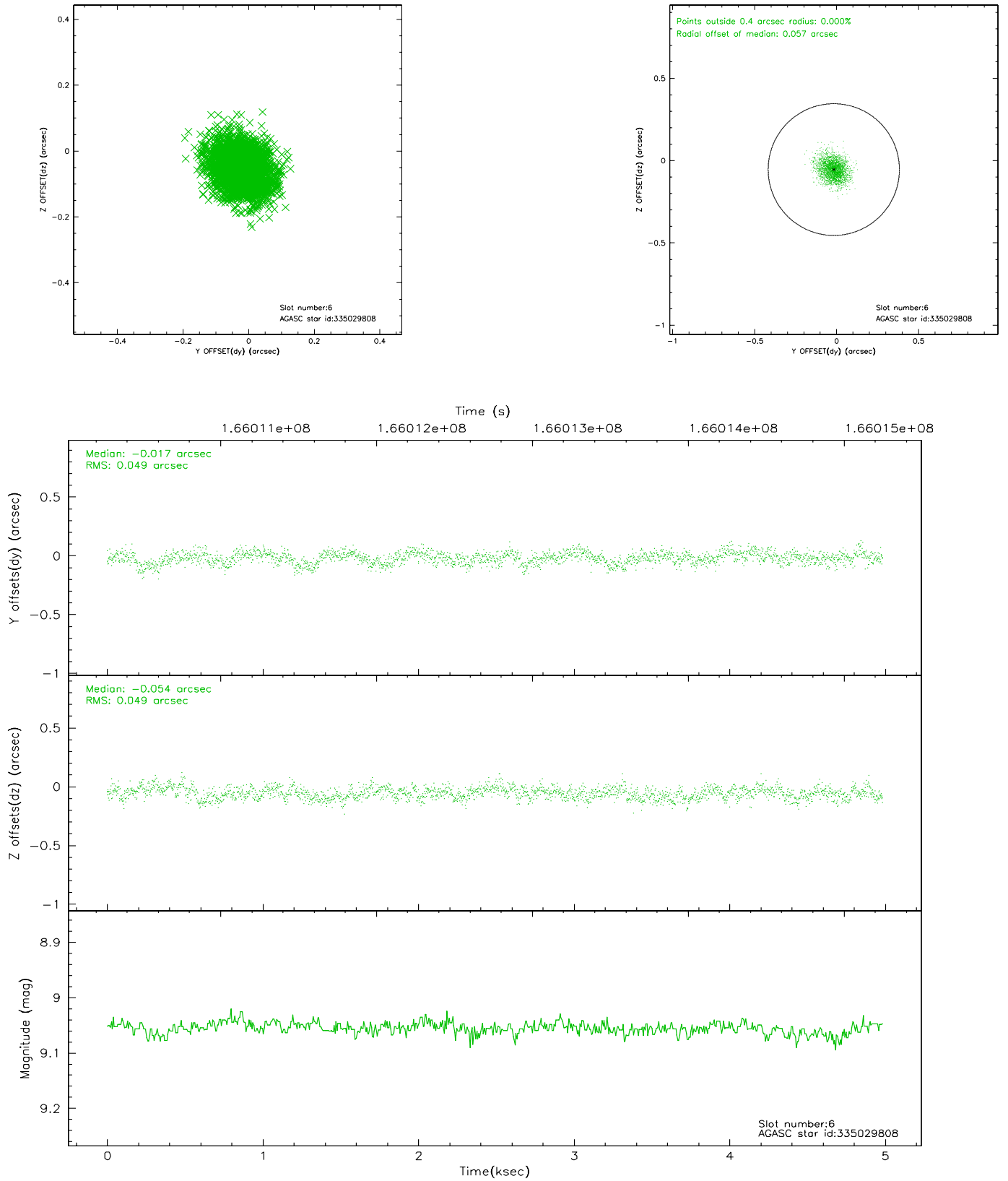
2.4.2 Slot 4



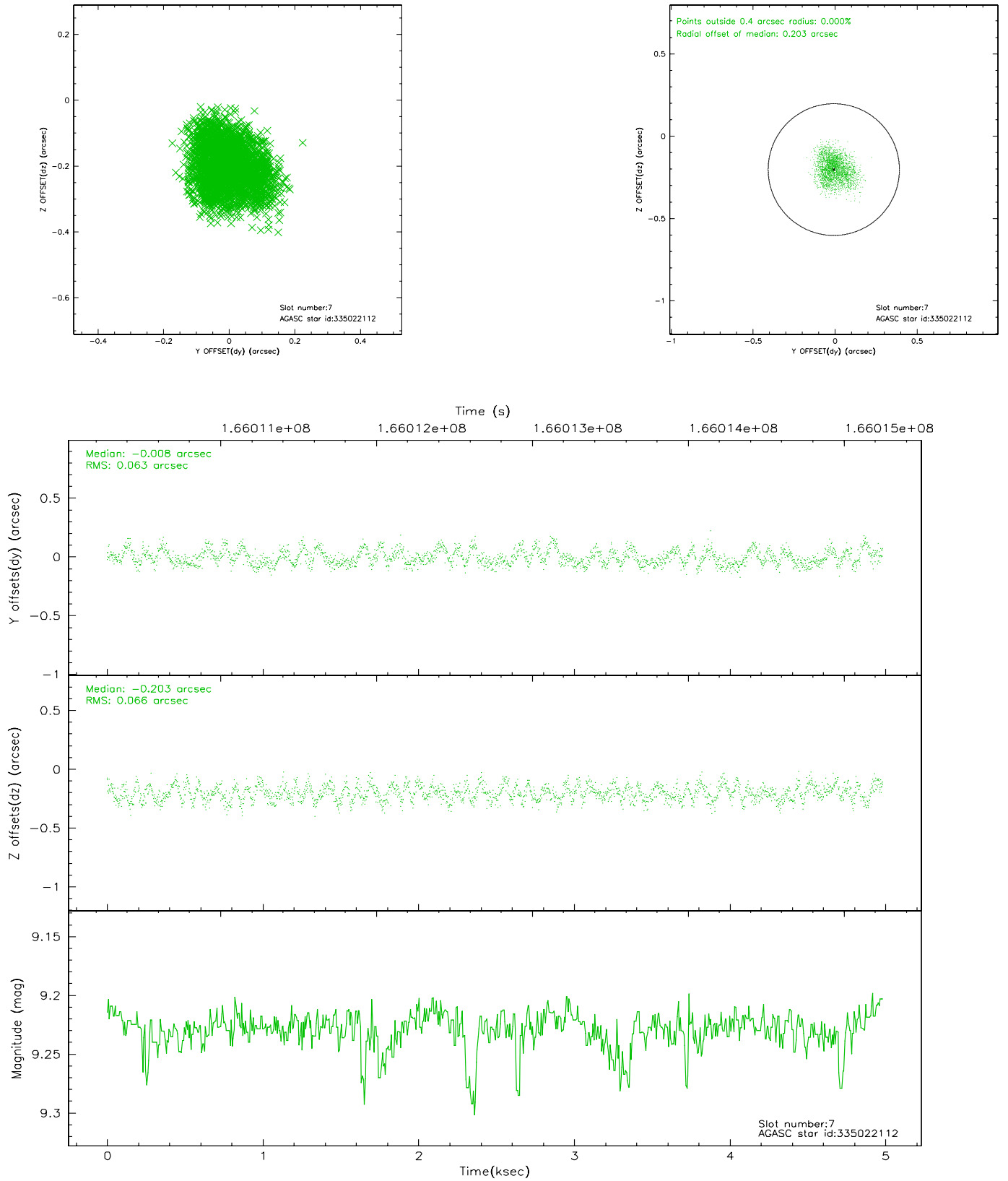
2.4.3 Slot 5



2.4.4 Slot 6

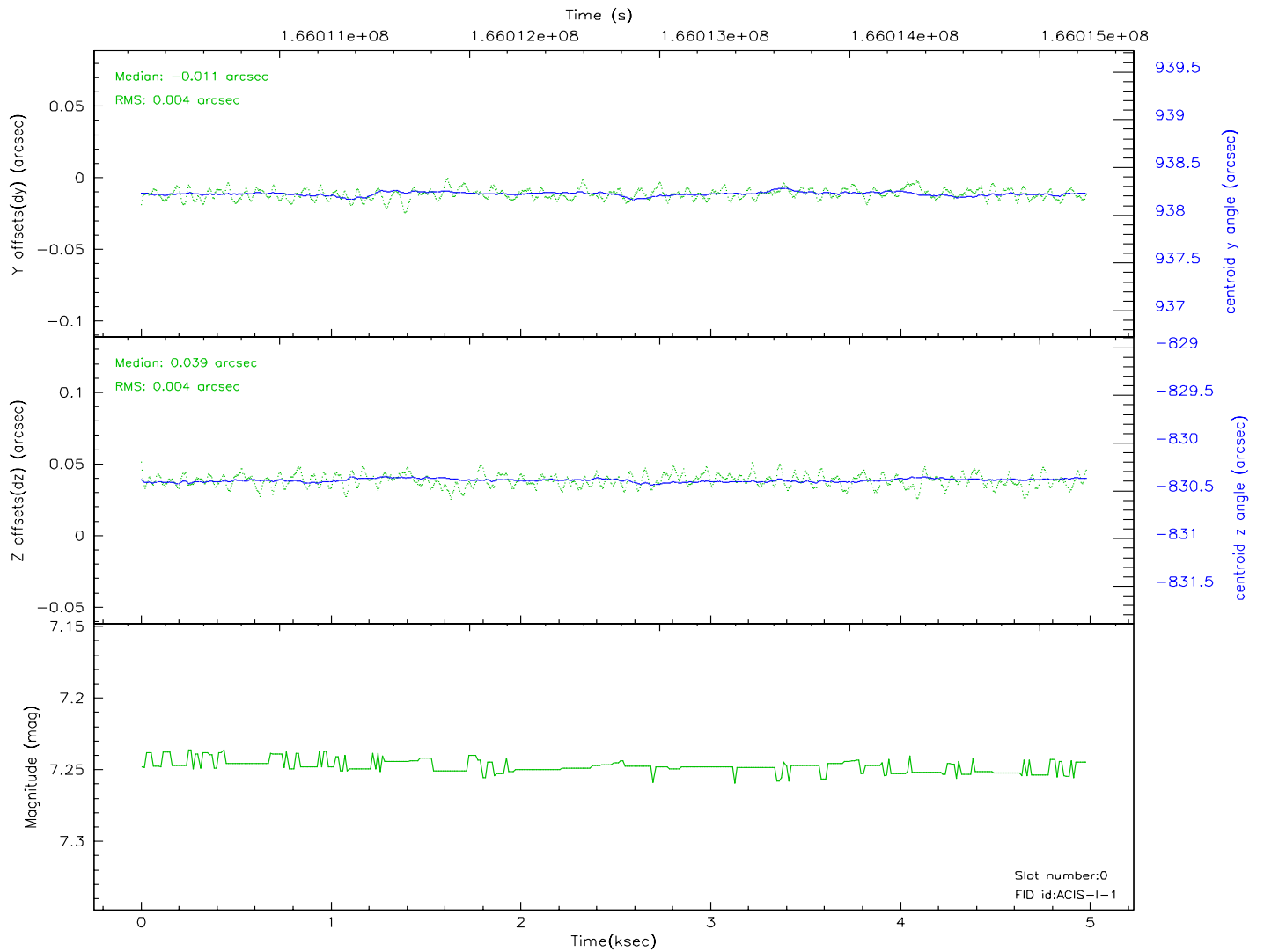
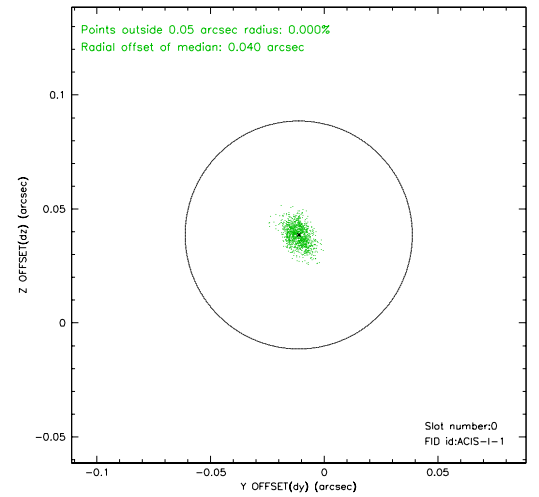
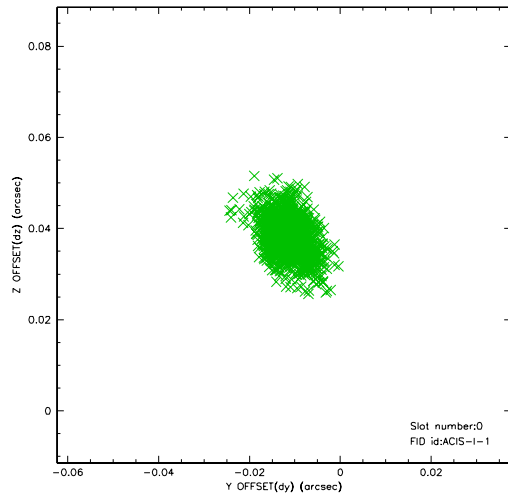


2.4.5 Slot 7

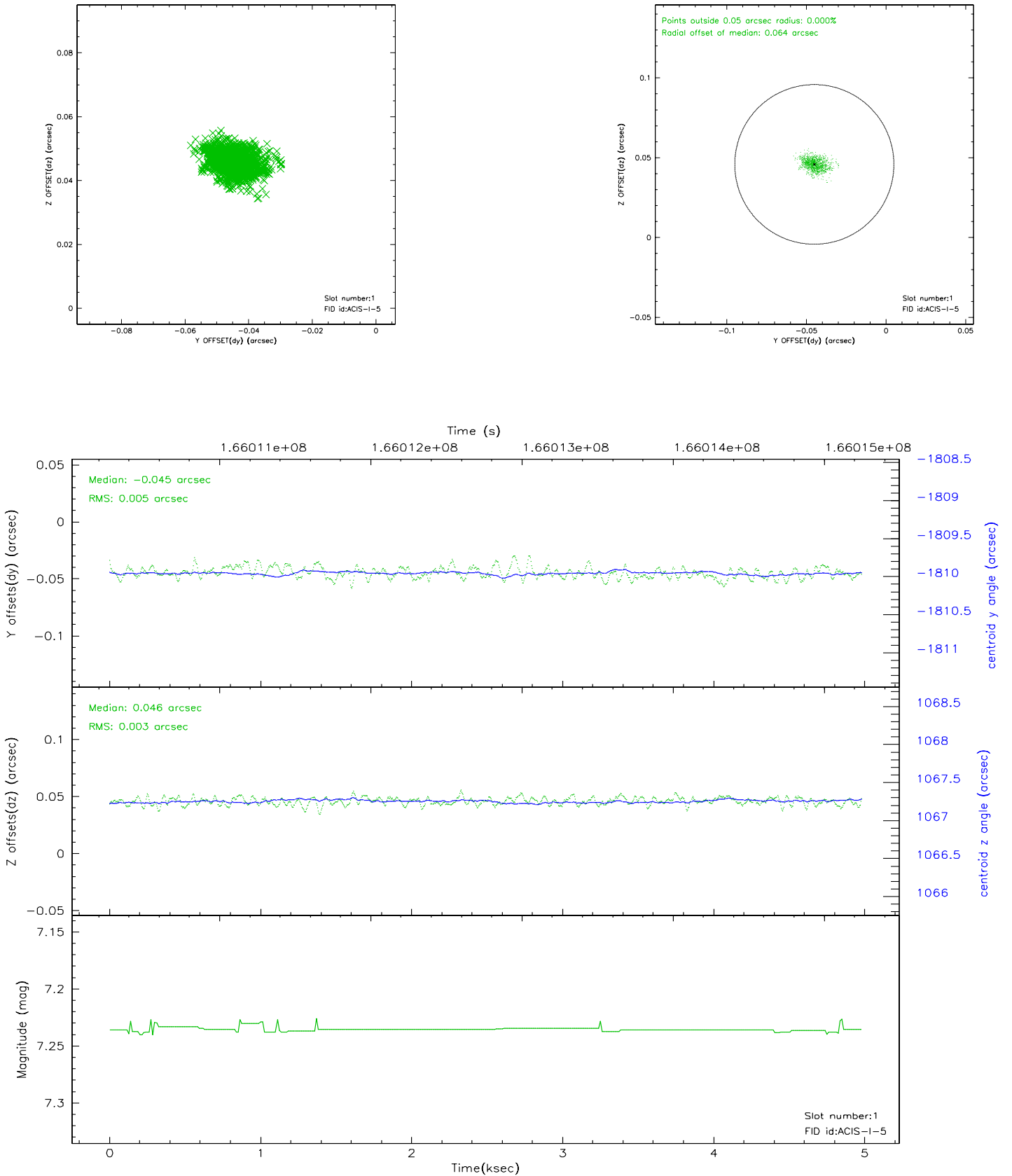


2.5 FID Slots

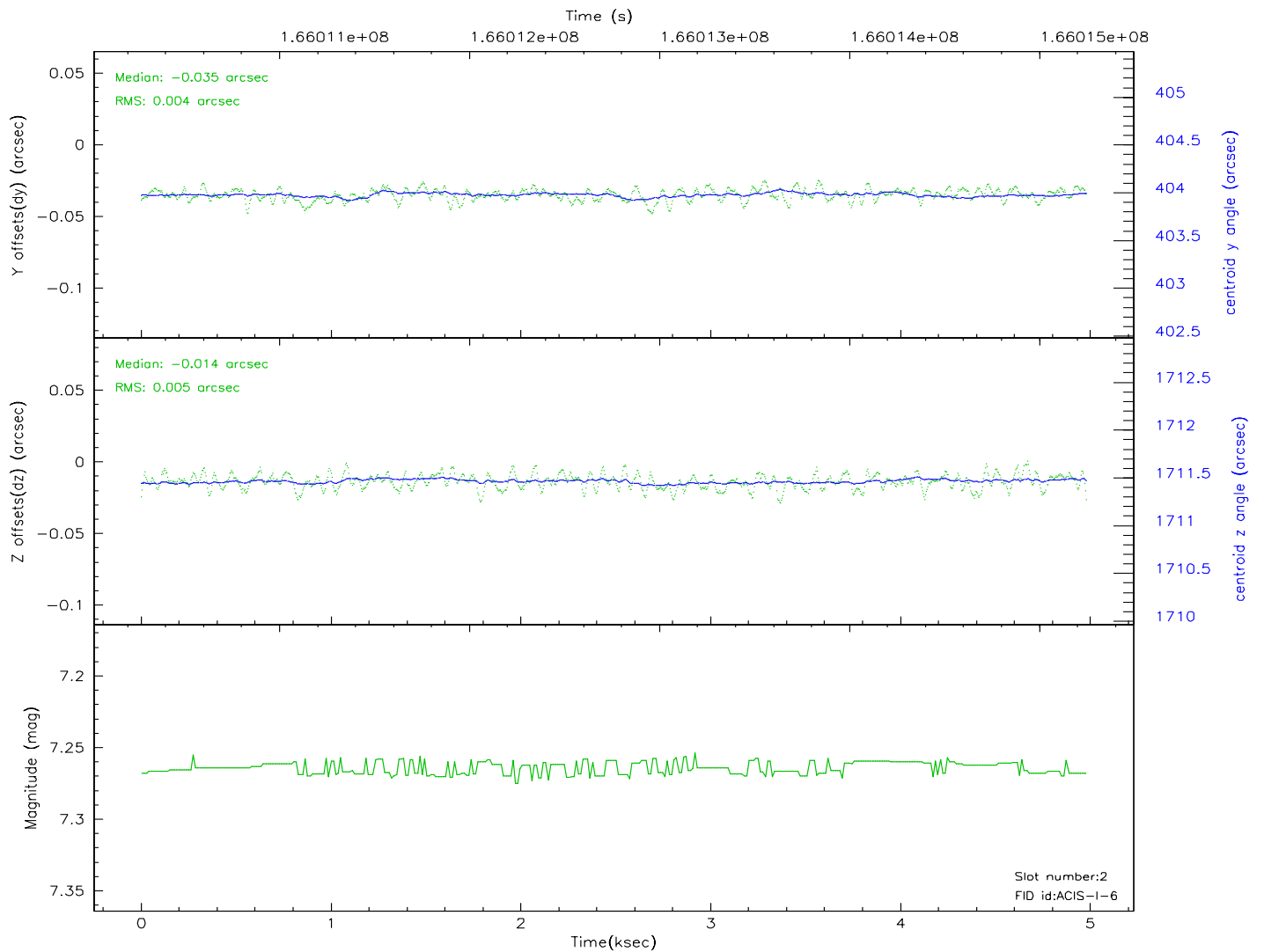
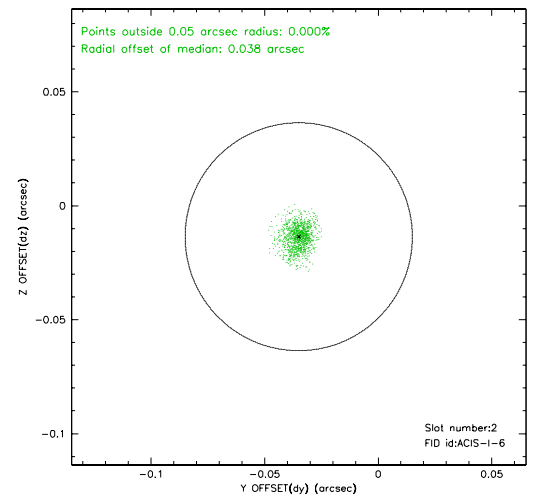
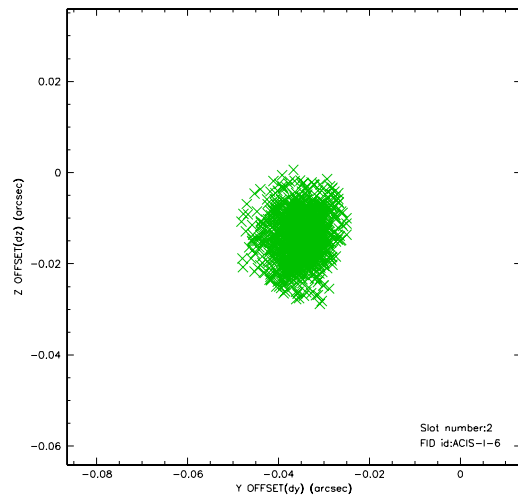
2.5.1 Slot 0



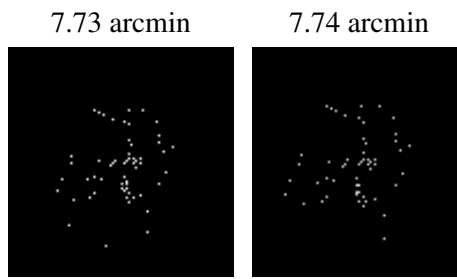
2.5.2 Slot 1



2.5.3 Slot 2



3 Point Sources



A Summary

A.1 Status

V&V Scientist	Jen Lauer
V&V Date (YYYY-MM-DD)	2006.07.30
V&V Edition	1
V&V Disposition and Status	OK
V&V Charge Time	4.575

A.2 Comments