

V&V Reference Report

L2 ASCDS Version : 7.6.8

Observation 4247 - L2 Version 001
Chandra X-Ray Center

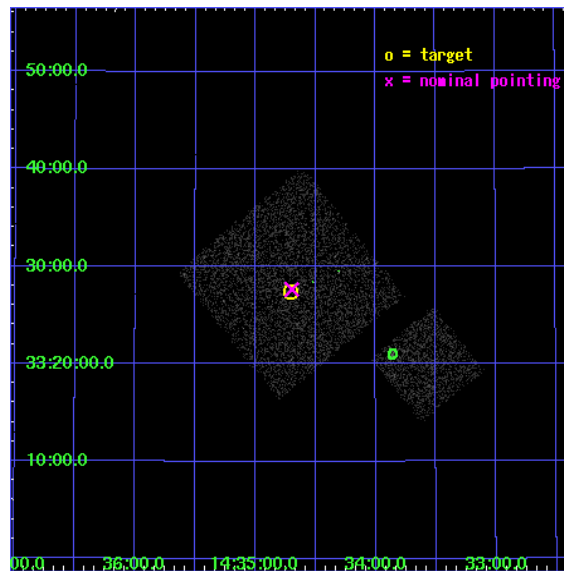
L2 Processing Date : Jul 29 2006

Contents

1	Front	2
2	OBI	3
2.1	OBI	3
2.1.1	Images	3
2.1.2	Bias	3
2.1.3	Parameters	4
2.1.4	Events	4
2.2	Compared Parameters	5
2.3	Aspect	6
2.4	Star Slots	9
2.4.1	Slot 3	9
2.4.2	Slot 4	10
2.4.3	Slot 5	11
2.4.4	Slot 6	12
2.4.5	Slot 7	13
2.5	FID Slots	14
2.5.1	Slot 0	14
2.5.2	Slot 1	15
2.5.3	Slot 2	16
3	Point Sources	17
A	Summary	18
A.1	Status	18
A.2	Comments	18

1 Front

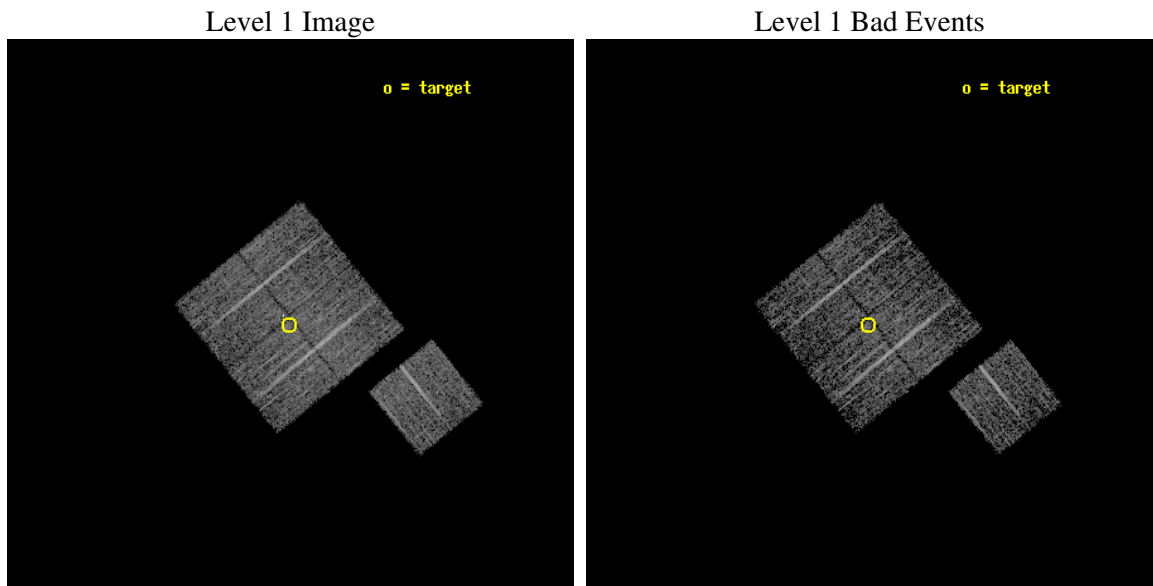
seq_num	900290
obs_id	4247
title	A CHANDRA WIDE-FIELD SURVEY TO MAP THE COSMIC WEB AND INVESTIGATE THE EVOLUTION OF NUCLEAR ACCRETION
observer	Dr. Christine Jones
object	SD50
dtcycle	0
cycle	P
ra_targ	218.676831
dec_targ	33.456918
ra_nom	218.67407673835
dec_nom	33.460965068081
roll_nom	141.01019326646
revision	2
ontime	4773.9589906633
livetime	4711.5837019128
ontime0	4777.0999908149
ontime1	4777.0999908149
ontime2	4777.0999908149
ontime3	4773.9589906633
ontime6	4777.0999908149
l2events	9984



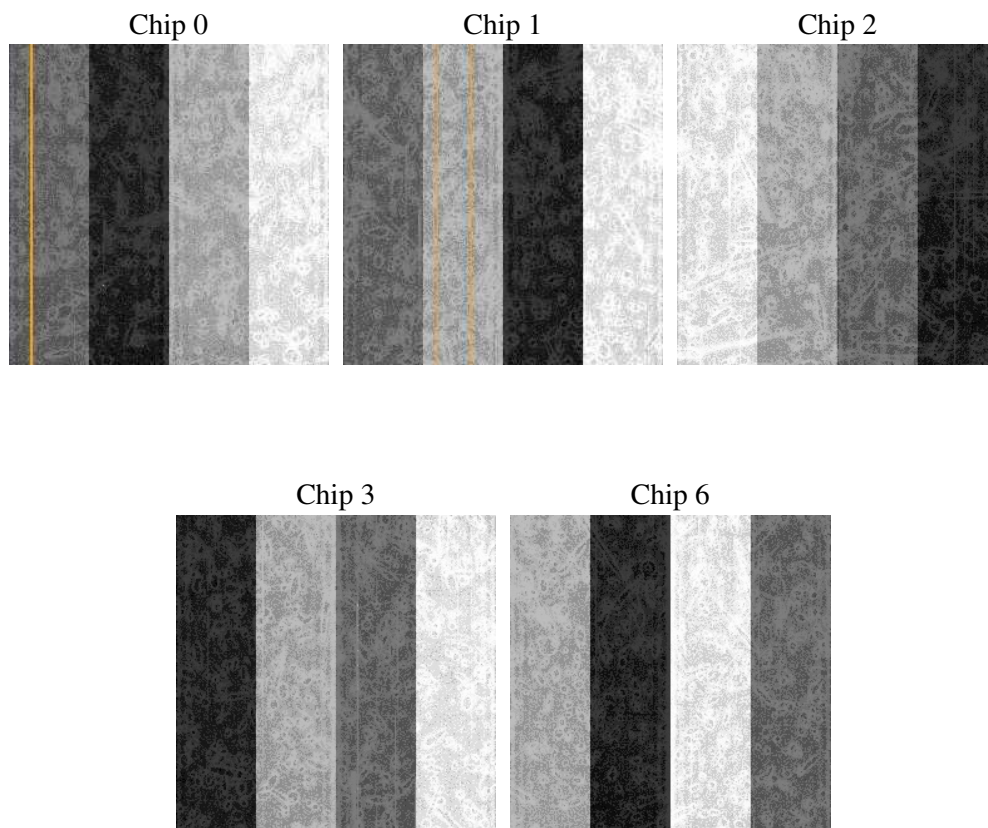
2 OBI

2.1 OBI

2.1.1 Images



2.1.2 Bias



2.1.3 Parameters

obi_num	1
ascdsver	7.6.8
caldbver	3.2.2
date	2006-07-30T02:01:04
revision	2

sched_exp_time	5000.000000
ontime	4777.4731914401
ontime0	4780.6141915917
ontime1	4780.6141915917
ontime2	4780.614171654
ontime3	4777.4731914401
ontime6	4780.614171654
l1events	120494

2.1.4 Events

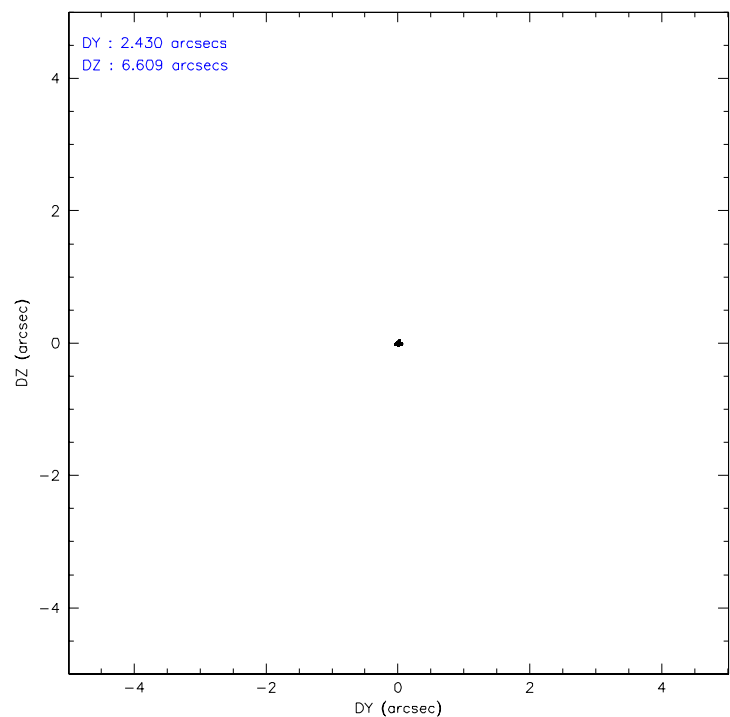
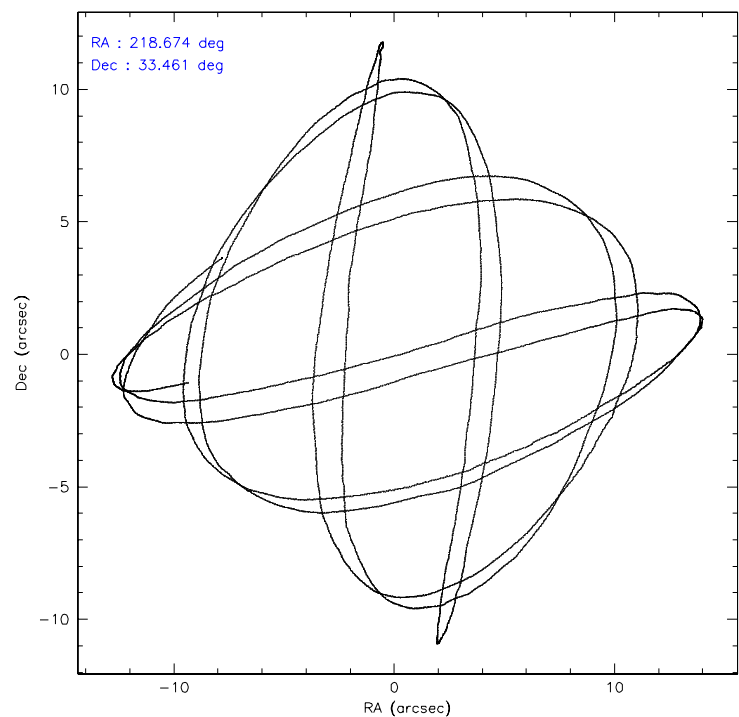
	ccd 0	ccd 1	ccd 2	ccd 3	ccd 6
level 1 events	23014	22511	26310	24532	24127
rejected events	20657	19678	23816	22362	21755
rejected %	89%	87%	90%	91%	90%

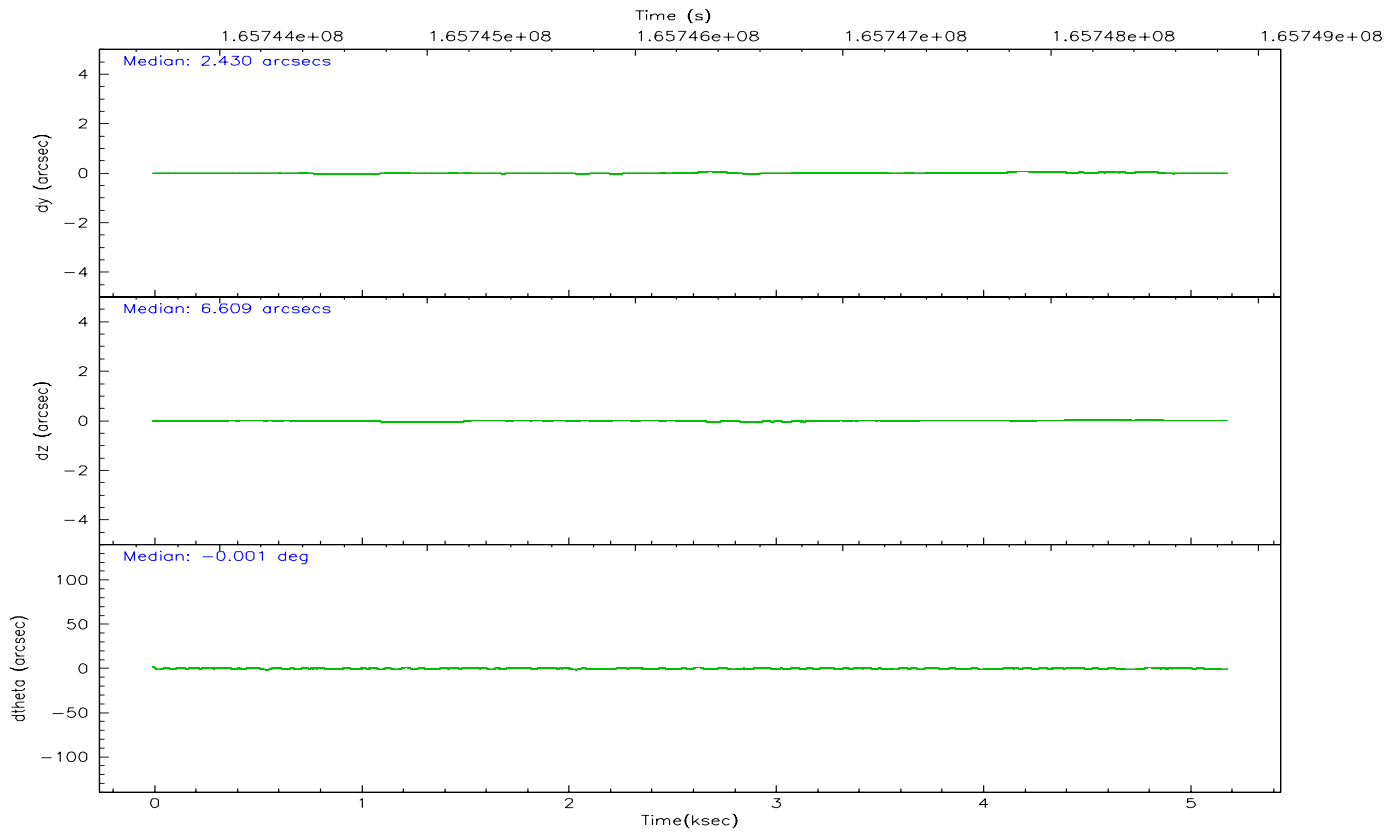
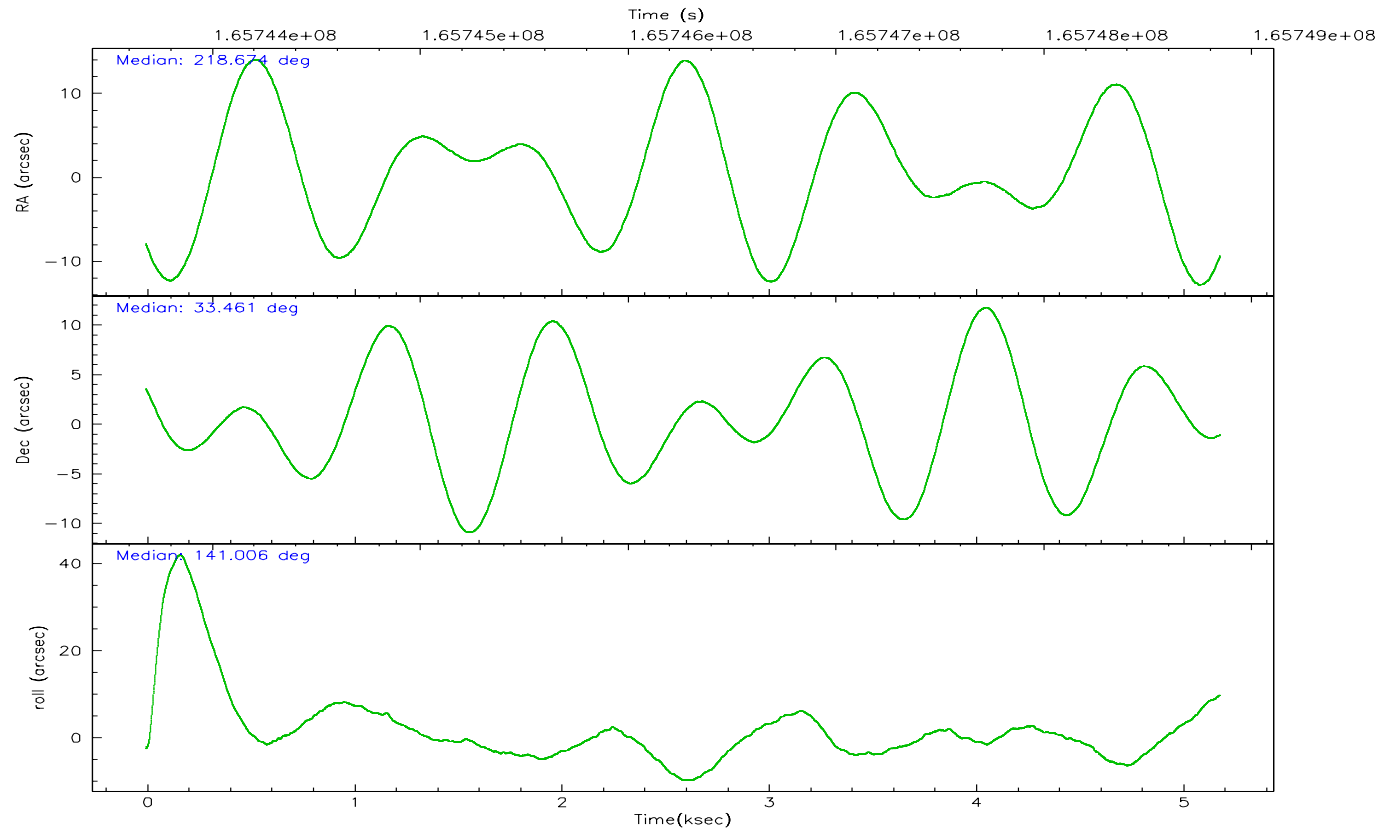
	ccd 0	ccd 1	ccd 2	ccd 3	ccd 6
grade 0 events	849	1128	978	819	839
	3%	5%	3%	3%	3%
grade 1 events	15	20	12	15	8
	0%	0%	0%	0%	0%
grade 2 events	564	582	544	447	502
	2%	2%	2%	1%	2%
grade 3 events	266	305	282	255	265
	1%	1%	1%	1%	1%
grade 4 events	236	300	281	238	272
	1%	1%	1%	0%	1%
grade 5 events	702	777	713	781	805
	3%	3%	2%	3%	3%
grade 6 events	444	520	411	412	495
	1%	2%	1%	1%	2%
grade 7 events	19938	18879	23089	21565	20941
	86%	83%	87%	87%	86%

2.2 Compared Parameters

Parameter	Planned	Actual	Parameter	Planned	Actual
Instrument	ACIS	ACIS	Obspar format version number	6	6
Detector	ACIS-01236	ACIS-01236	Obspar file type	PREDICTED	ACTUAL
Grating	NONE	NONE	Obspar update status	NONE	UPDATED
Data mode	VFAINT	VFAINT	On-chip summing requested	N	N
Observation mode	POINTING	POINTING	Subarray requested	NONE	NONE
Pointing RA	218.706655	218.6740767383482	Alternating exposures requested	N	N
Pointing Dec	33.456841	33.46096506808131	Primary exposure time	0.000000	3.1
Pointing Roll	140.783553	141.0101932664644			
SIM focus pos (mm)	-0.782348	-0.7809083437167272			
SIM defocus (mm)	0	0.001439871863259334			
SIM translation stage pos (mm)	-233.592463	-233.5874344608287			
SIM translation stage offset (mm)	0	-0.005018542100998502			
Observation start time	165743855.184000	165743479.37732			
Observation start date	2003-04-03T07:56:31	2003-04-03T07:51:19			
Observation end time	165748855.184000	165748989.26506			
Observation end date	2003-04-03T09:19:51	2003-04-03T09:23:09			
Read mode	TIMED	TIMED			

2.3 Aspect



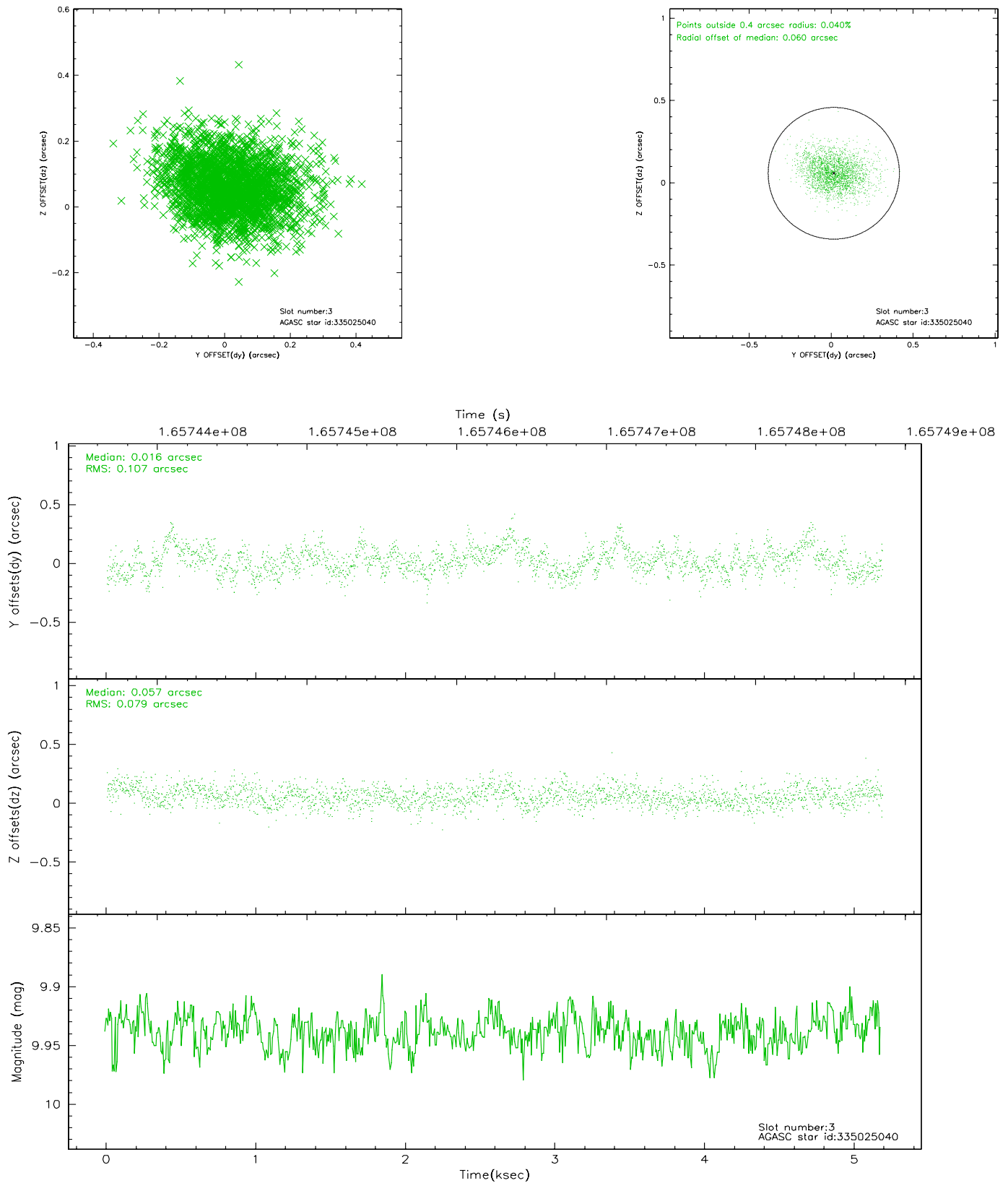


Slot Statistics

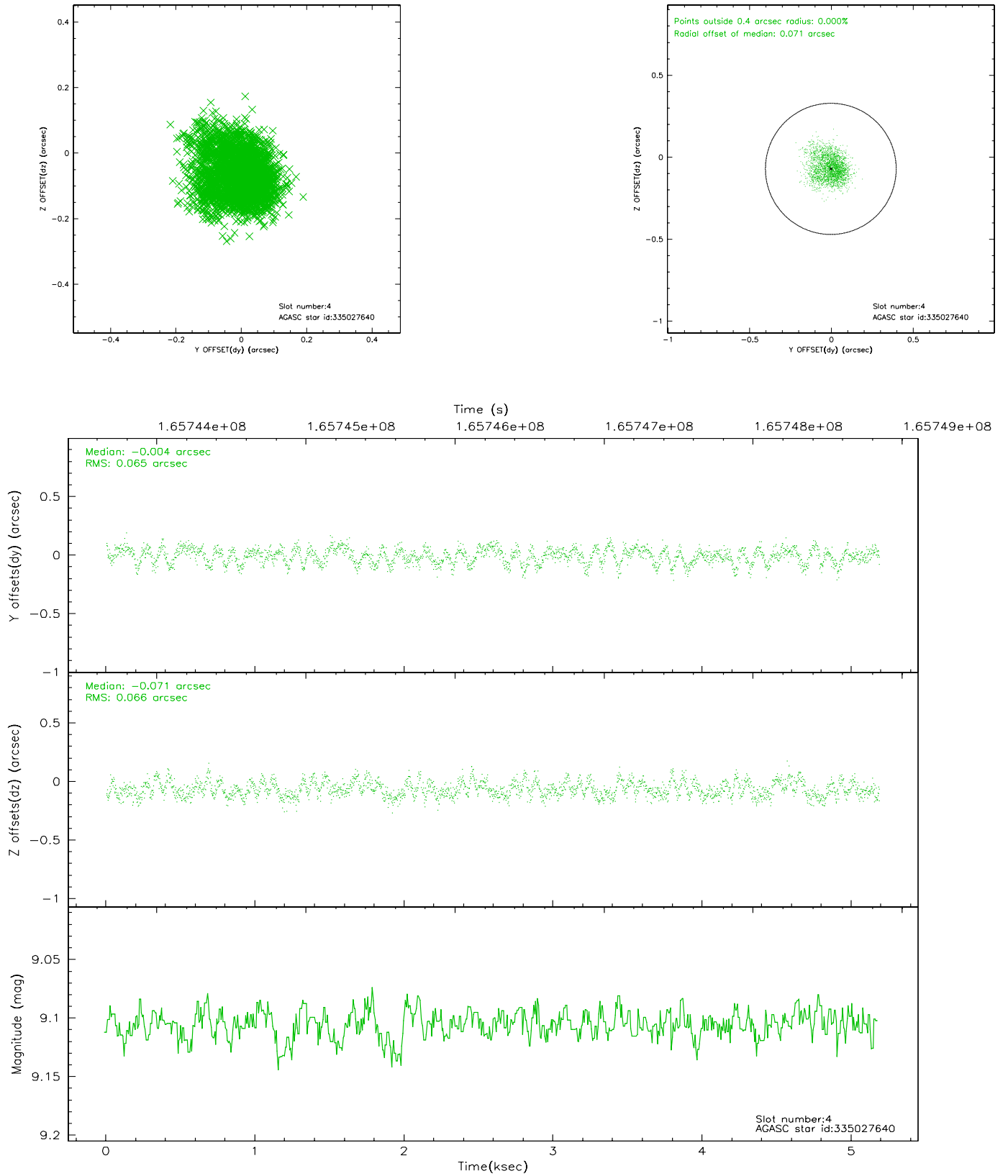
slot	status	id	mag	n_pts	med_dy	med_dz	dr1	dr2	ra	dec	mean_y	mean_z
0	FID	ACIS-I-1	7.25	1265	-0.007	0.022	0.006	0.009	0.000000	0.000000	937.35	-829.99
1	FID	ACIS-I-5	7.24	1265	-0.052	0.045	0.006	0.010	0.000000	0.000000	-1810.11	1067.00
2	FID	ACIS-I-6	7.26	1265	-0.033	0.003	0.006	0.011	0.000000	0.000000	401.66	1712.74
3	GUIDE	335025040	9.94	2528	0.016	0.057	0.139	0.235	218.601670	34.305240	2173.37	-2169.16
4	GUIDE	335027640	9.11	2527	-0.004	-0.071	0.099	0.160	218.092211	33.193770	839.67	1898.75
5	GUIDE	335152784	7.23	2529	-0.055	-0.081	0.066	0.101	219.280617	33.678221	-824.94	-1707.88
6	GUIDE	335154960	9.56	2528	0.054	0.071	0.111	0.180	219.209961	33.303073	-1521.65	-532.46
7	GUIDE	335157088	9.08	2528	-0.011	0.002	0.137	0.210	219.274029	33.726909	-698.99	-1831.39

2.4 Star Slots

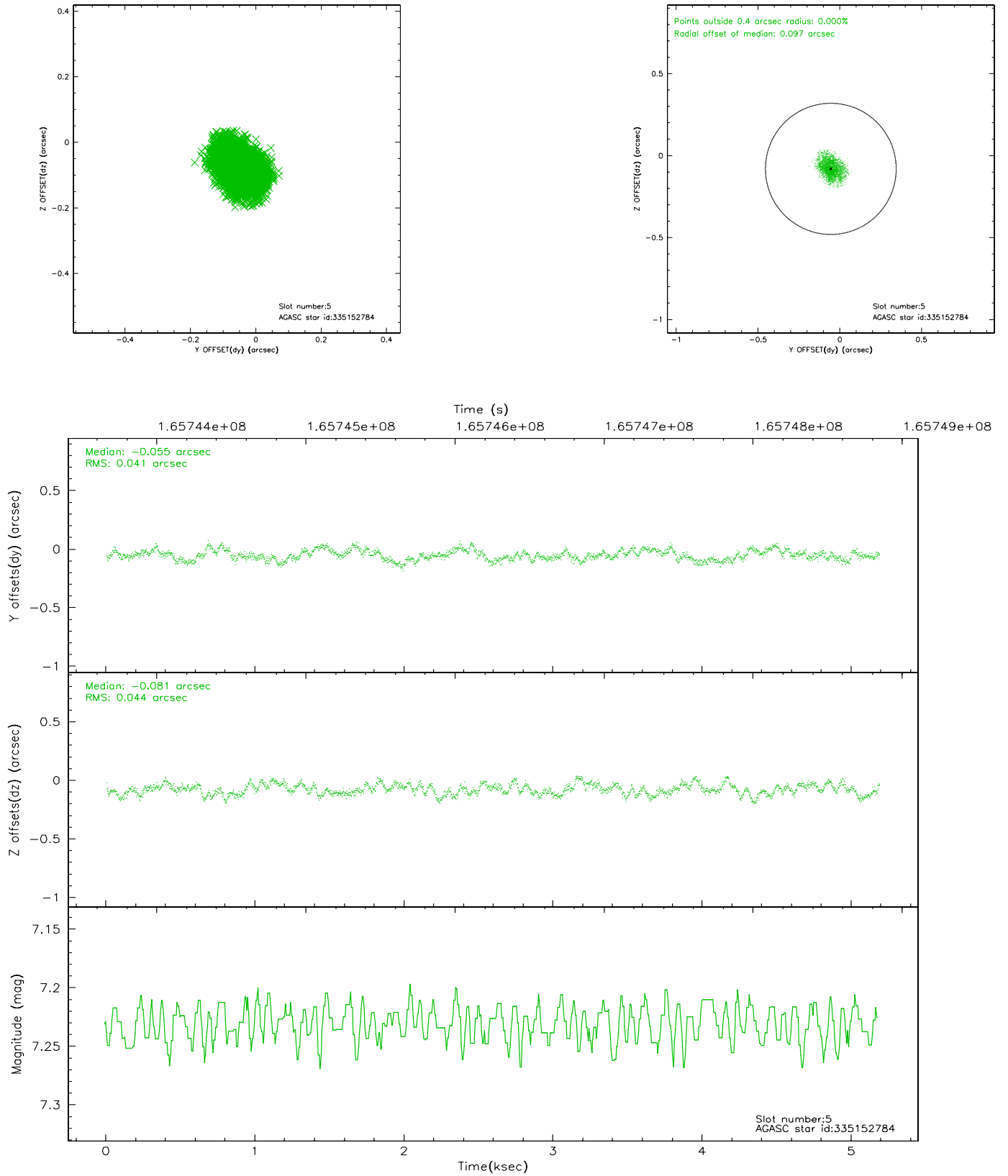
2.4.1 Slot 3



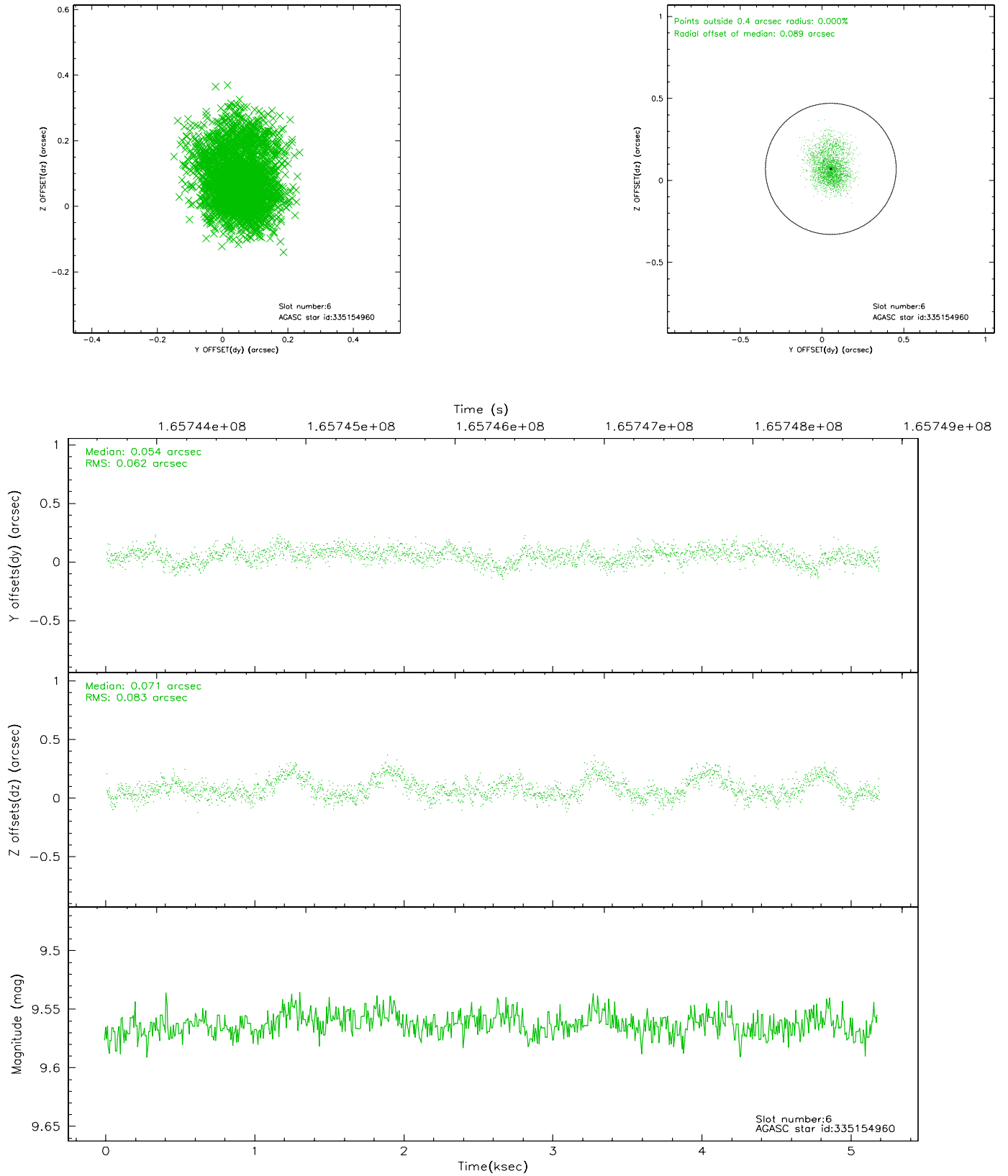
2.4.2 Slot 4



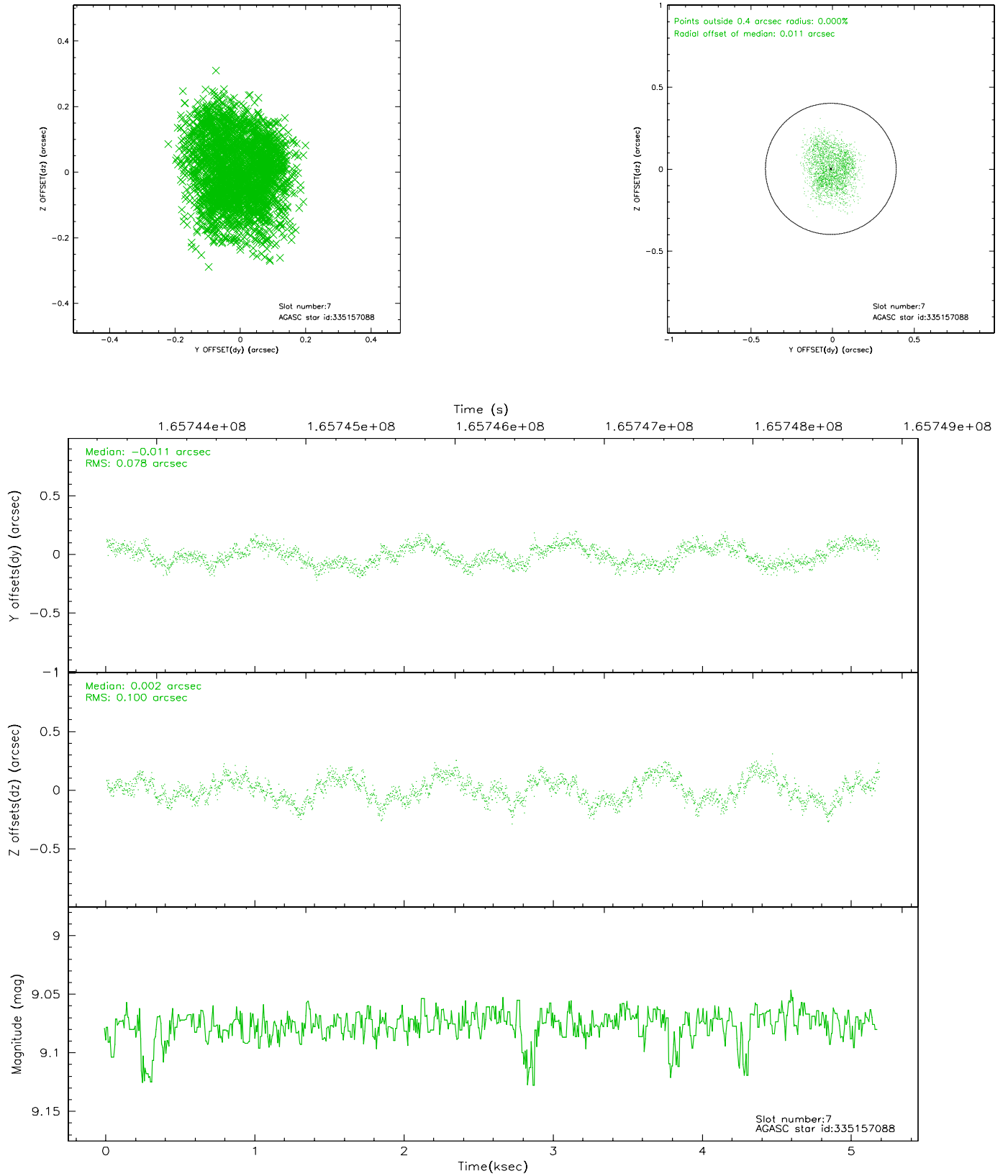
2.4.3 Slot 5



2.4.4 Slot 6

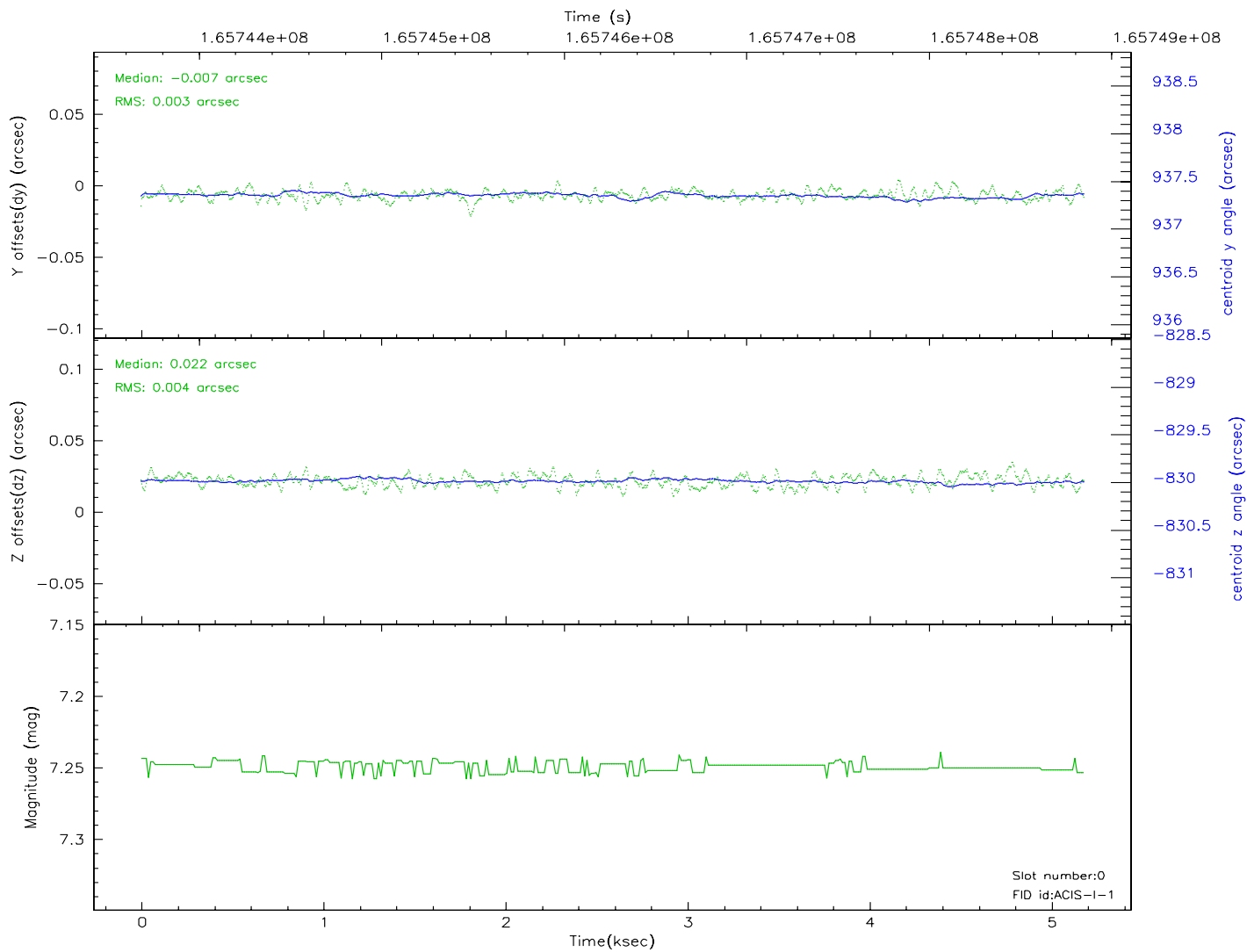
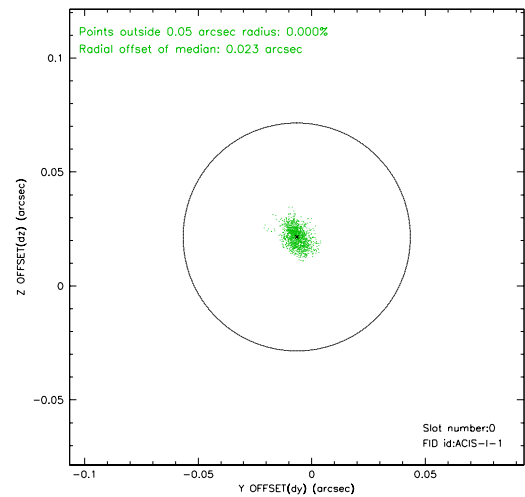
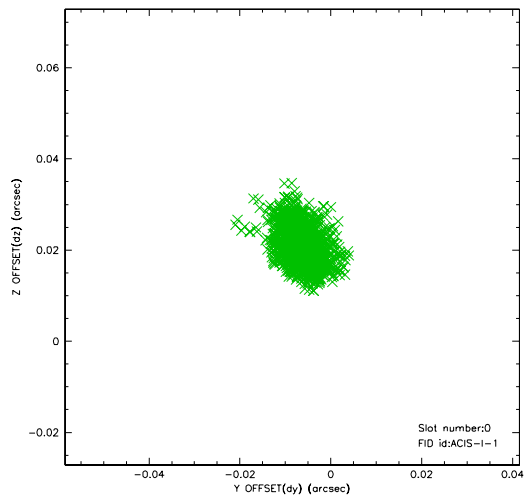


2.4.5 Slot 7

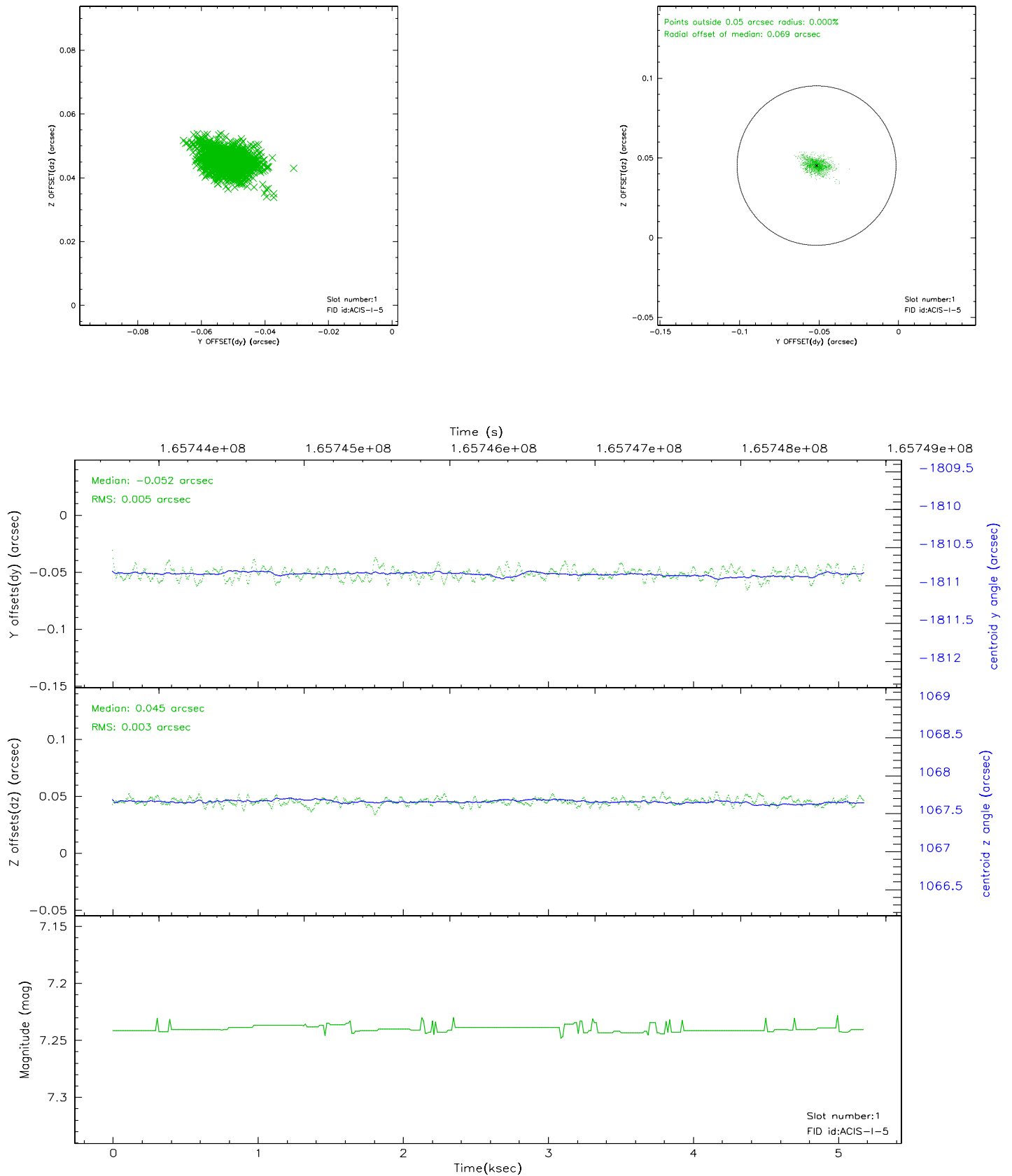


2.5 FID Slots

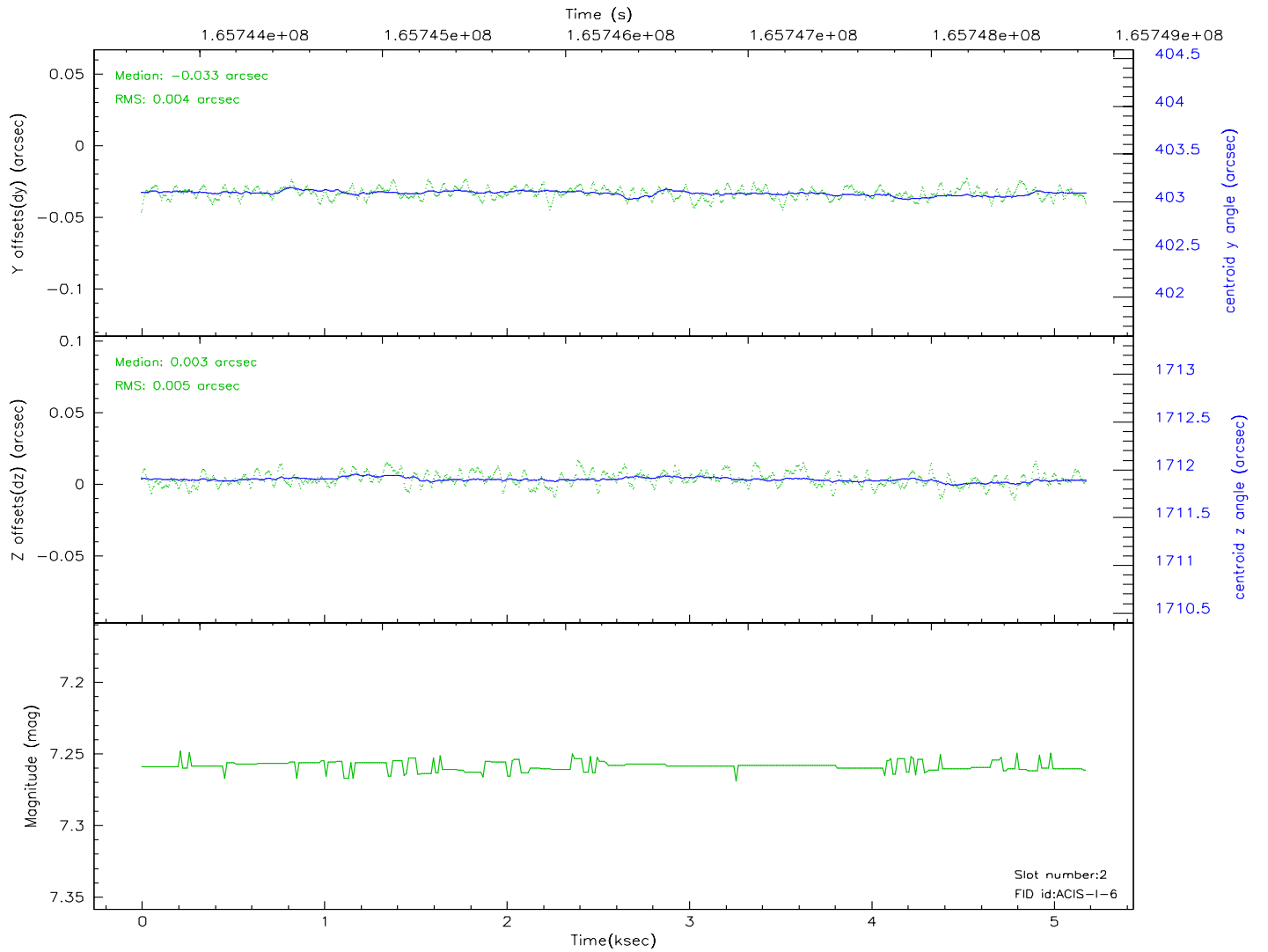
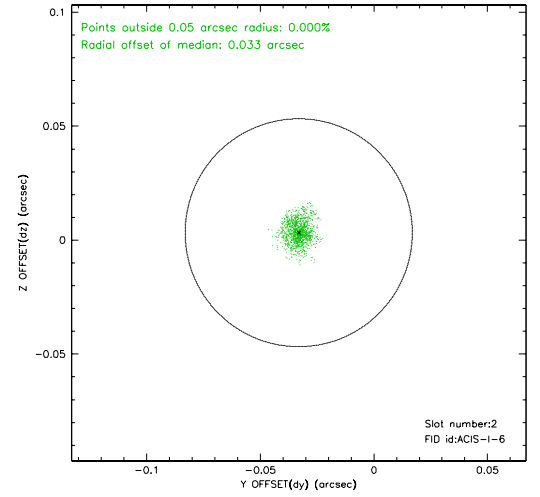
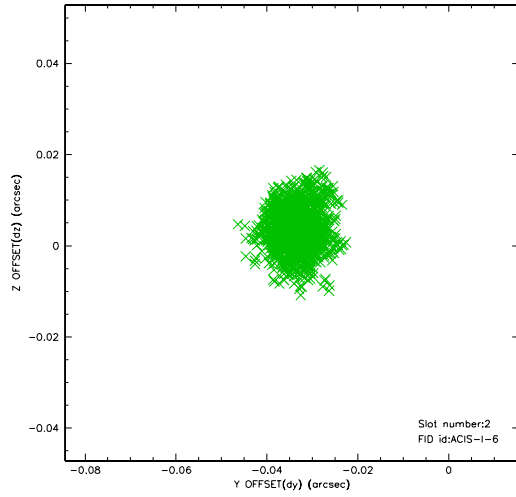
2.5.1 Slot 0



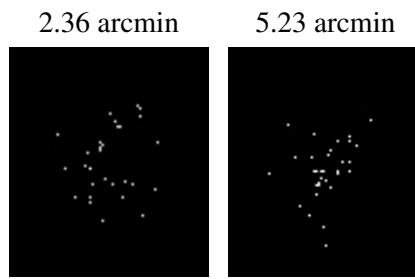
2.5.2 Slot 1



2.5.3 Slot 2



3 Point Sources



A Summary

A.1 Status

V&V Scientist	Jen Lauer
V&V Date (YYYY-MM-DD)	2006.07.30
V&V Edition	1
V&V Disposition and Status	OK
V&V Charge Time	4.777

A.2 Comments