

V&V Reference Report

L2 ASCDS Version : 7.6.8

Observation 4242 - L2 Version 001
Chandra X-Ray Center

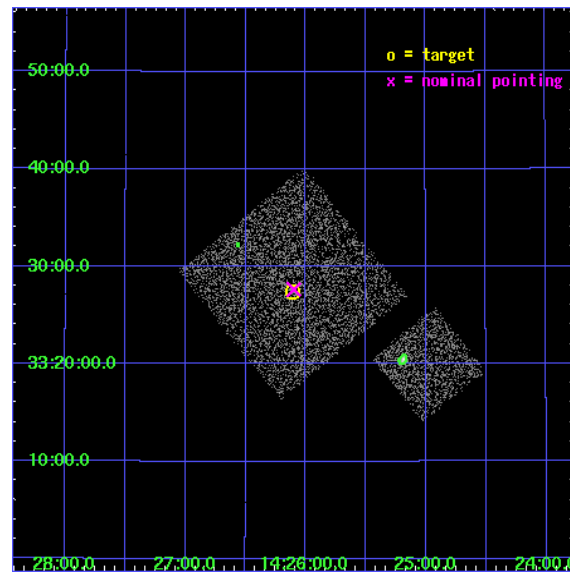
L2 Processing Date : Jul 29 2006

Contents

1	Front	2
2	OBI	3
2.1	OBI	3
2.1.1	Images	3
2.1.2	Bias	3
2.1.3	Parameters	4
2.1.4	Events	4
2.2	Compared Parameters	5
2.3	Aspect	6
2.4	Star Slots	9
2.4.1	Slot 3	9
2.4.2	Slot 4	10
2.4.3	Slot 5	11
2.4.4	Slot 6	12
2.4.5	Slot 7	13
2.5	FID Slots	14
2.5.1	Slot 0	14
2.5.2	Slot 1	15
2.5.3	Slot 2	16
3	Point Sources	17
A	Summary	18
A.1	Status	18
A.2	Comments	18

1 Front

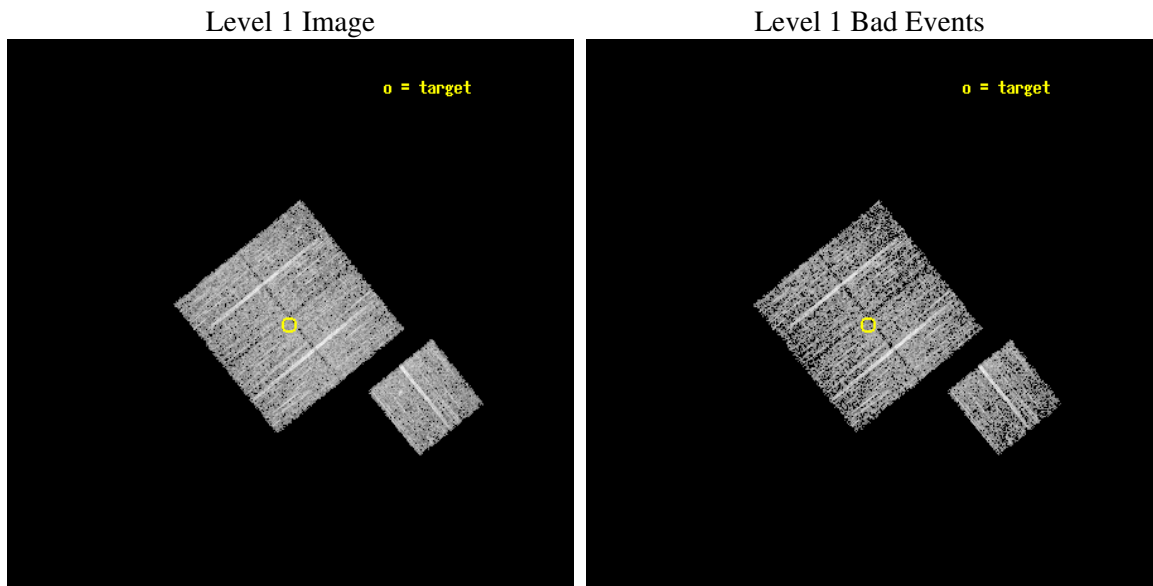
seq_num	900285
obs_id	4242
title	A CHANDRA WIDE-FIELD SURVEY TO MAP THE COSMIC WEB AND INVESTIGATE THE EVOLUTION OF NUCLEAR ACCRETION
observer	Dr. Christine Jones
object	SS5
dtcycle	0
cycle	P
ra_targ	216.527246
dec_targ	33.456918
ra_nom	216.52463247858
dec_nom	33.460973163916
roll_nom	141.01013960458
revision	2
ontime	4773.9590005577
livetime	4711.5837116779
ontime0	4777.0999908149
ontime1	4773.9590005577
ontime2	4777.0999908149
ontime3	4773.9590005577
ontime6	4773.9590005577
l2events	9722



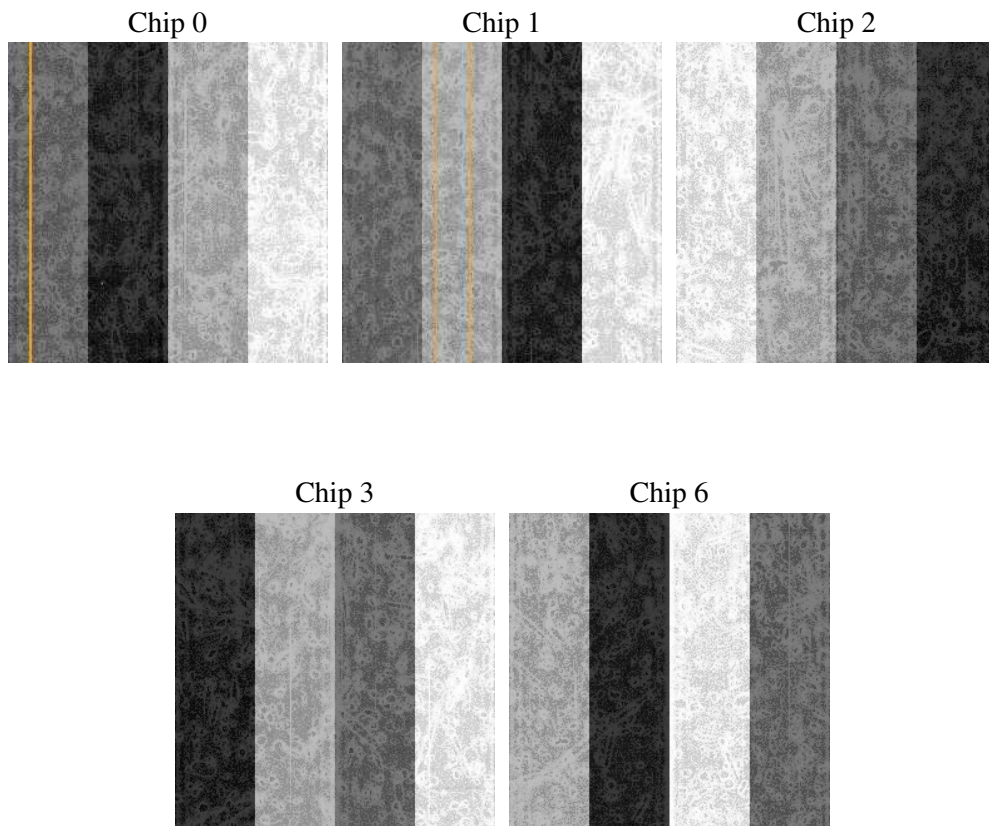
2 OBI

2.1 OBI

2.1.1 Images



2.1.2 Bias



2.1.3 Parameters

obi_num	0
ascdsver	7.6.8
caldsver	3.2.2
date	2006-07-29T16:17:45
revision	2

sched_exp_time	5000.000000
ontime	4777.4825412035
ontime0	4780.6235314608
ontime1	4777.4825412035
ontime2	4780.6235513687
ontime3	4777.4825412035
ontime6	4777.4825412035
l1events	121613

2.1.4 Events

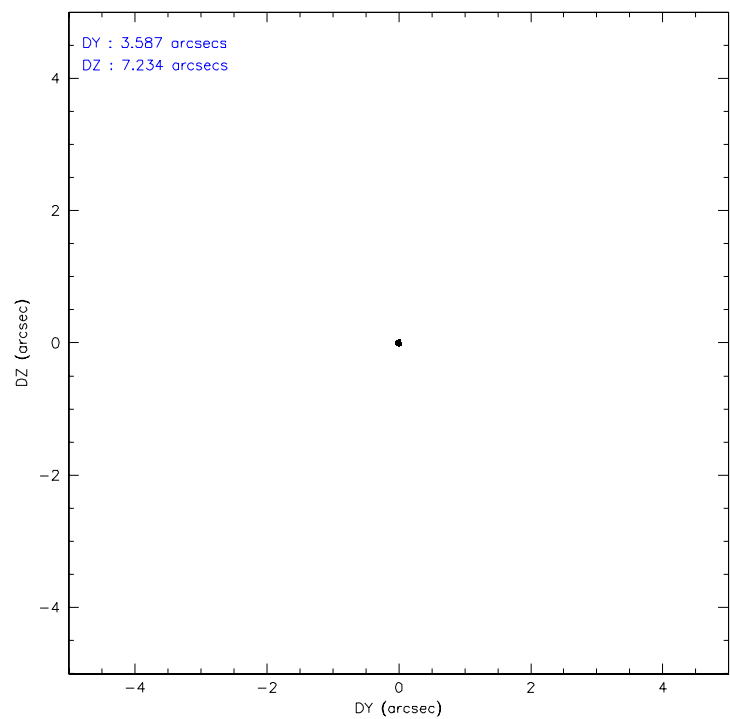
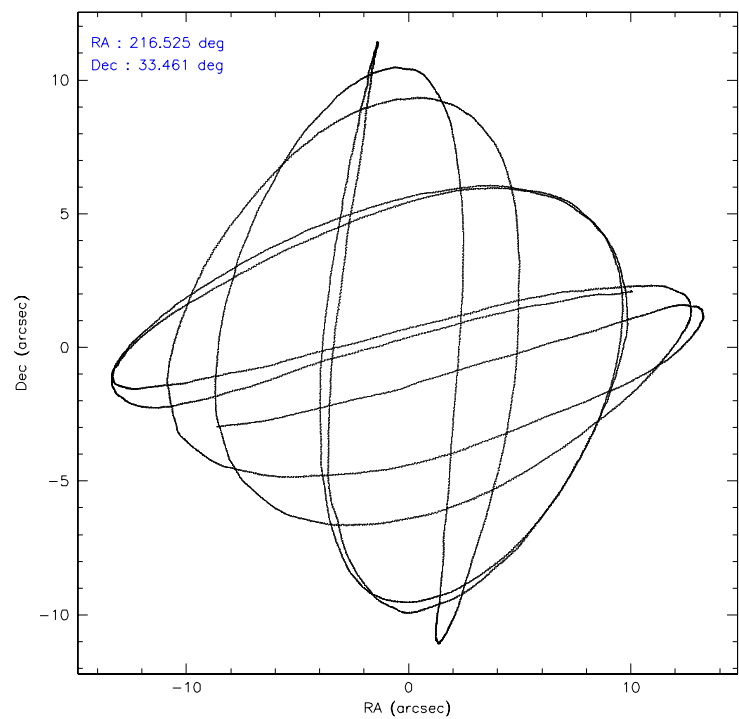
	ccd 0	ccd 1	ccd 2	ccd 3	ccd 6
level 1 events	22943	23127	25963	25105	24475
rejected events	20550	20610	23665	22942	21988
rejected %	89%	89%	91%	91%	89%

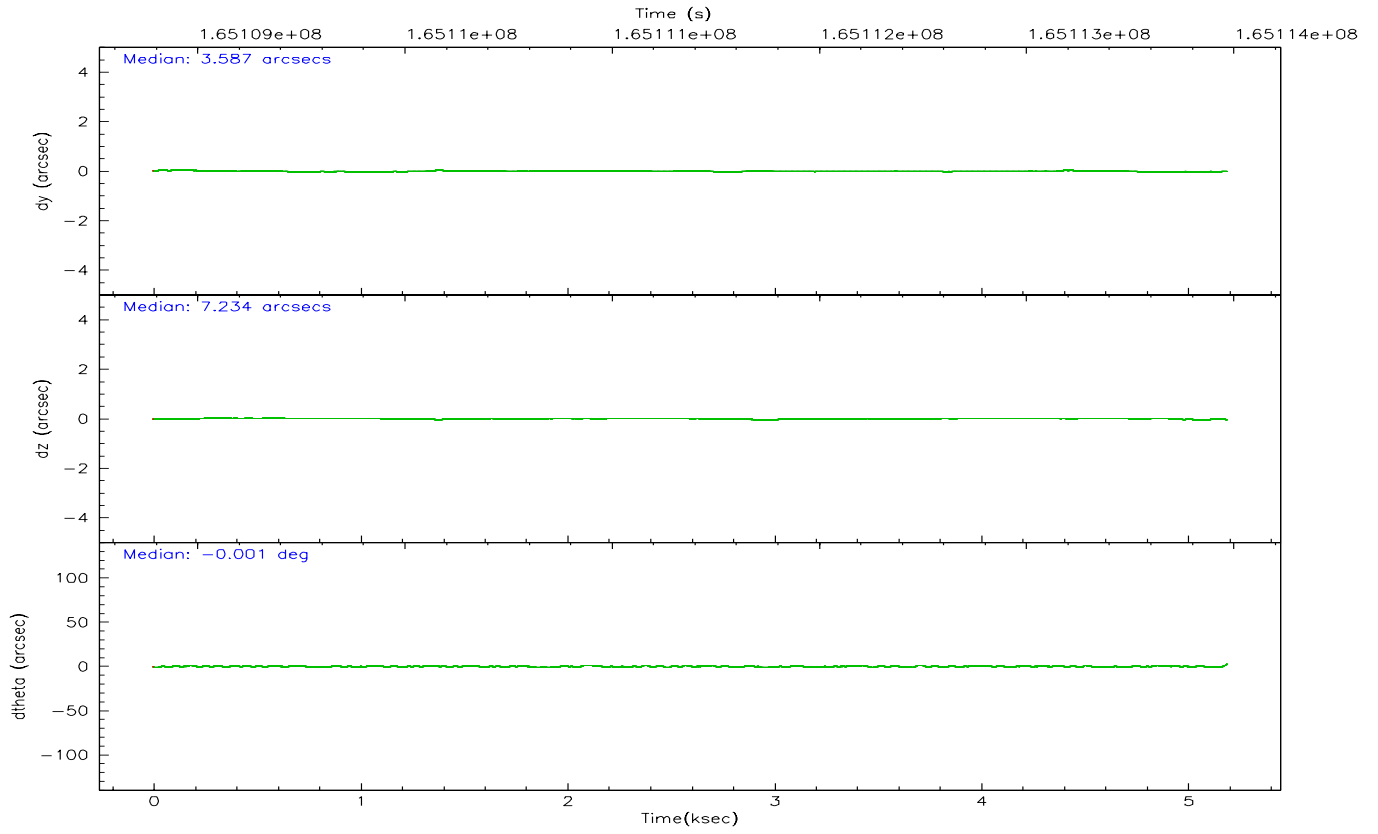
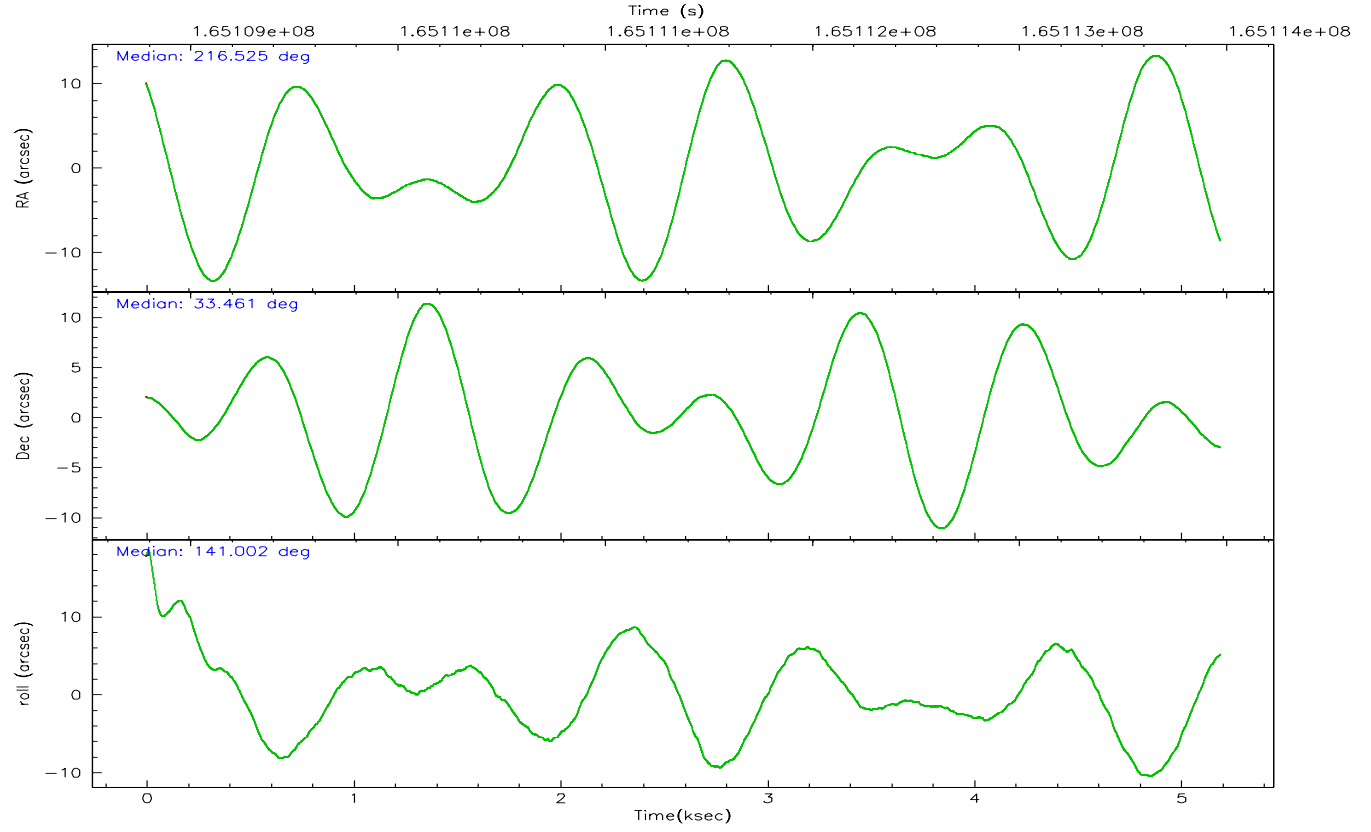
	ccd 0	ccd 1	ccd 2	ccd 3	ccd 6
grade 0 events	901	865	876	757	973
	3%	3%	3%	3%	3%
grade 1 events	10	14	14	16	8
	0%	0%	0%	0%	0%
grade 2 events	536	562	554	465	467
	2%	2%	2%	1%	1%
grade 3 events	293	316	241	257	319
	1%	1%	0%	1%	1%
grade 4 events	228	281	262	267	291
	0%	1%	1%	1%	1%
grade 5 events	649	739	648	850	816
	2%	3%	2%	3%	3%
grade 6 events	436	493	366	417	438
	1%	2%	1%	1%	1%
grade 7 events	19890	19857	23002	22076	21163
	86%	85%	88%	87%	86%

2.2 Compared Parameters

Parameter	Planned	Actual	Parameter	Planned	Actual
Instrument	ACIS	ACIS	Obspar format version number	6	6
Detector	ACIS-01236	ACIS-01236	Obspar file type	PREDICTED	ACTUAL
Grating	NONE	NONE	Obspar update status	NONE	UPDATED
Data mode	VFAINT	VFAINT	On-chip summing requested	N	N
Observation mode	POINTING	POINTING	Subarray requested	NONE	NONE
Pointing RA	216.557064	216.5246324785834	Alternating exposures requested	N	N
Pointing Dec	33.456836	33.46097316391621	Primary exposure time	0.000000	3.1
Pointing Roll	140.783562	141.0101396045788			
SIM focus pos (mm)	-0.782348	-0.7809083437167272			
SIM defocus (mm)	0	0.001439871863259334			
SIM translation stage pos (mm)	-233.592463	-233.5874344608287			
SIM translation stage offset (mm)	0	-0.005018542100998502			
Observation start time	165108969.184000	165108593.83805			
Observation start date	2003-03-26T23:35:05	2003-03-26T23:29:53			
Observation end time	165113969.184000	165114103.21329			
Observation end date	2003-03-27T00:58:25	2003-03-27T01:01:43			
Read mode	TIMED	TIMED			

2.3 Aspect



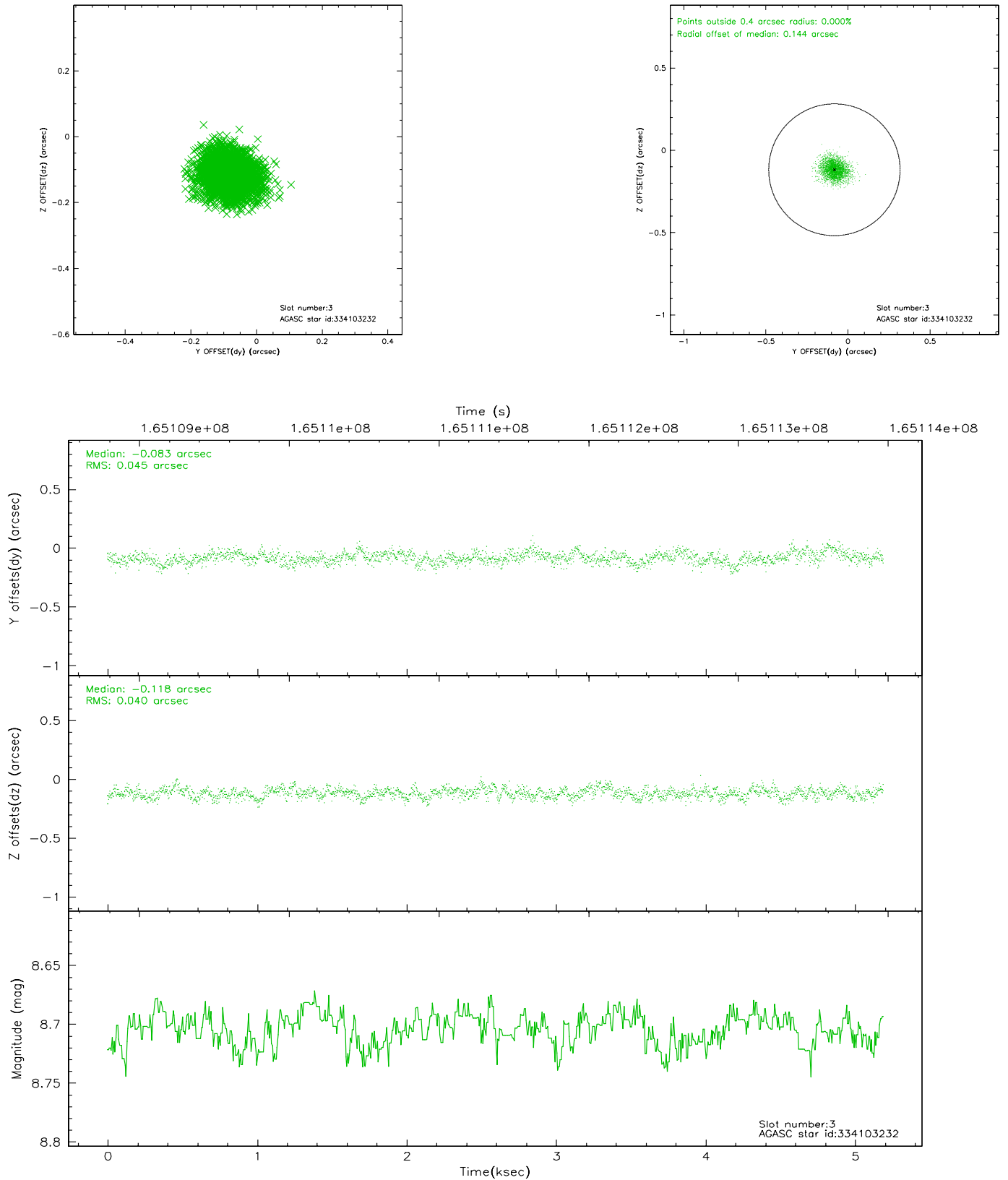


Slot Statistics

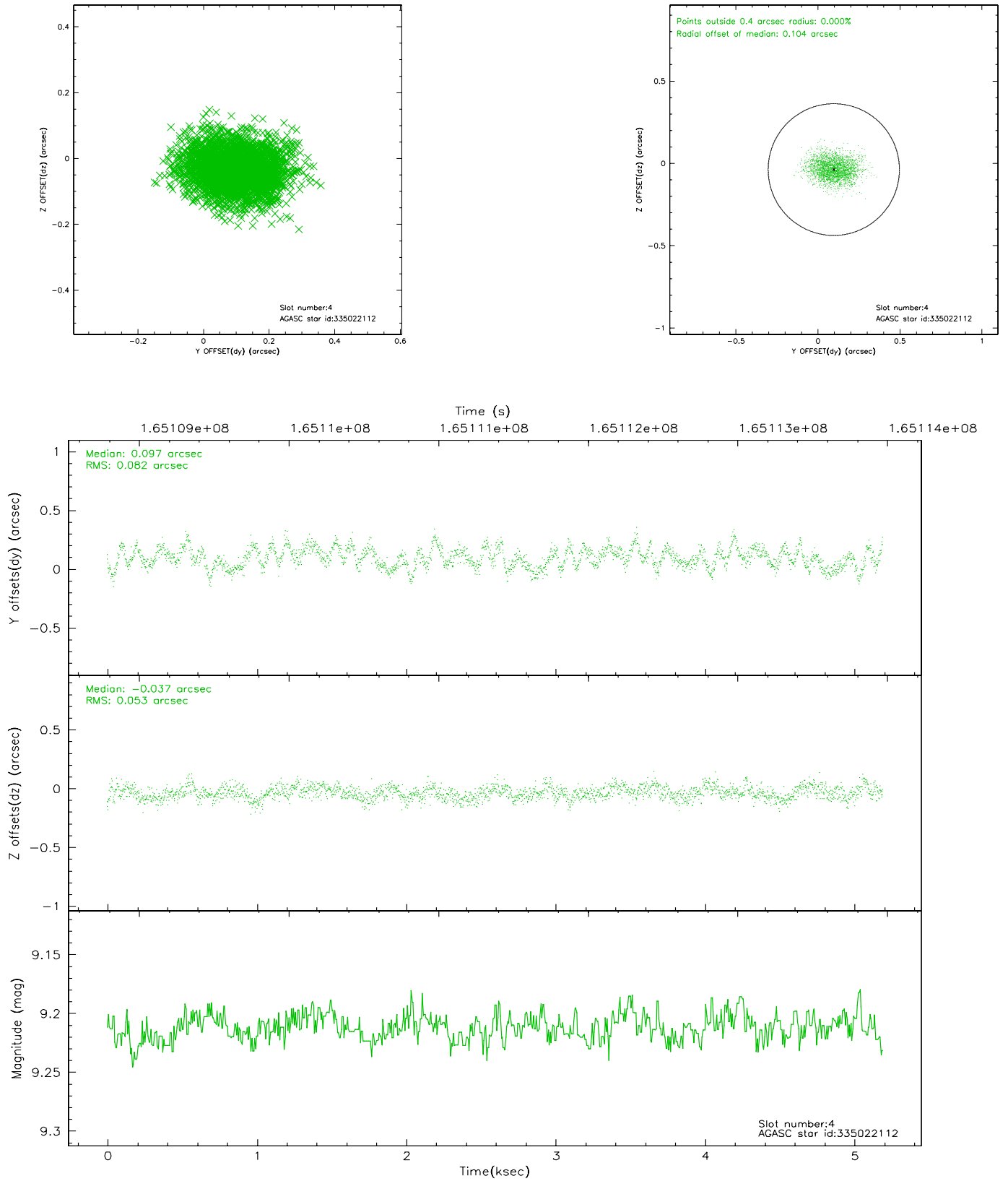
slot	status	id	mag	n_pts	med_dy	med_dz	dr1	dr2	ra	dec	mean_y	mean_z
0	FID	ACIS-I-1	7.25	1267	-0.001	0.046	0.005	0.010	0.000000	0.000000	936.18	-830.60
1	FID	ACIS-I-5	7.24	1266	-0.063	0.054	0.006	0.010	0.000000	0.000000	-1811.31	1066.36
2	FID	ACIS-I-6	7.26	1266	-0.027	-0.029	0.006	0.011	0.000000	0.000000	400.47	1712.07
3	GUIDE	334103232	8.70	2531	-0.083	-0.118	0.063	0.105	215.850271	33.571936	1909.15	1014.16
4	GUIDE	335022112	9.21	2530	0.097	-0.037	0.104	0.170	216.659296	32.794758	-1745.80	1651.39
5	GUIDE	335028696	9.20	2528	0.070	0.334	0.096	0.155	217.260519	33.844112	-743.57	-2414.45
6	GUIDE	335029808	9.06	2532	-0.033	-0.085	0.073	0.117	216.789548	33.180488	-1171.21	326.30
7	BAD	335029368	10.16	2360	-0.058	-0.099	0.126	0.207	217.181018	33.065030	-2347.20	-101.18

2.4 Star Slots

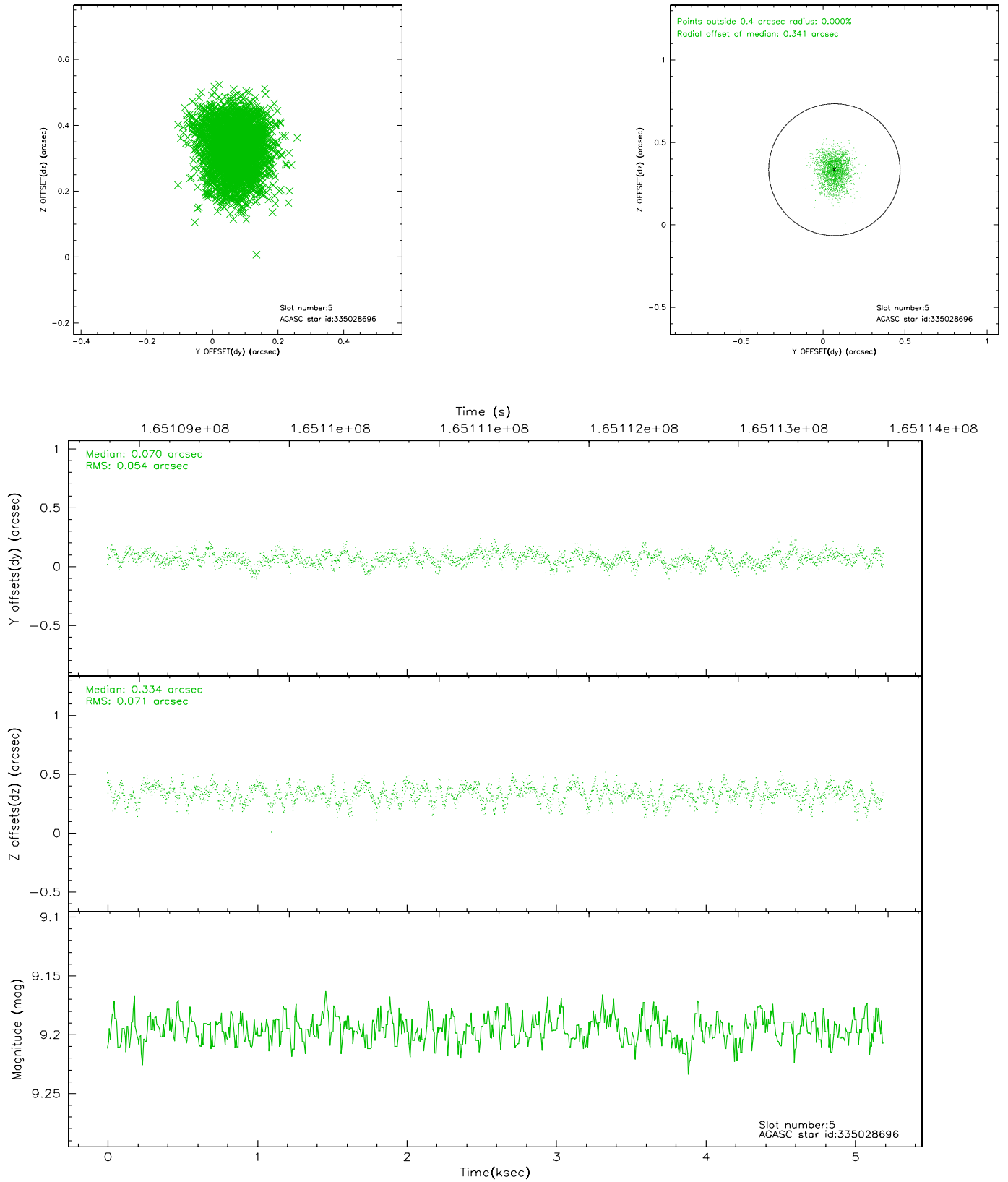
2.4.1 Slot 3



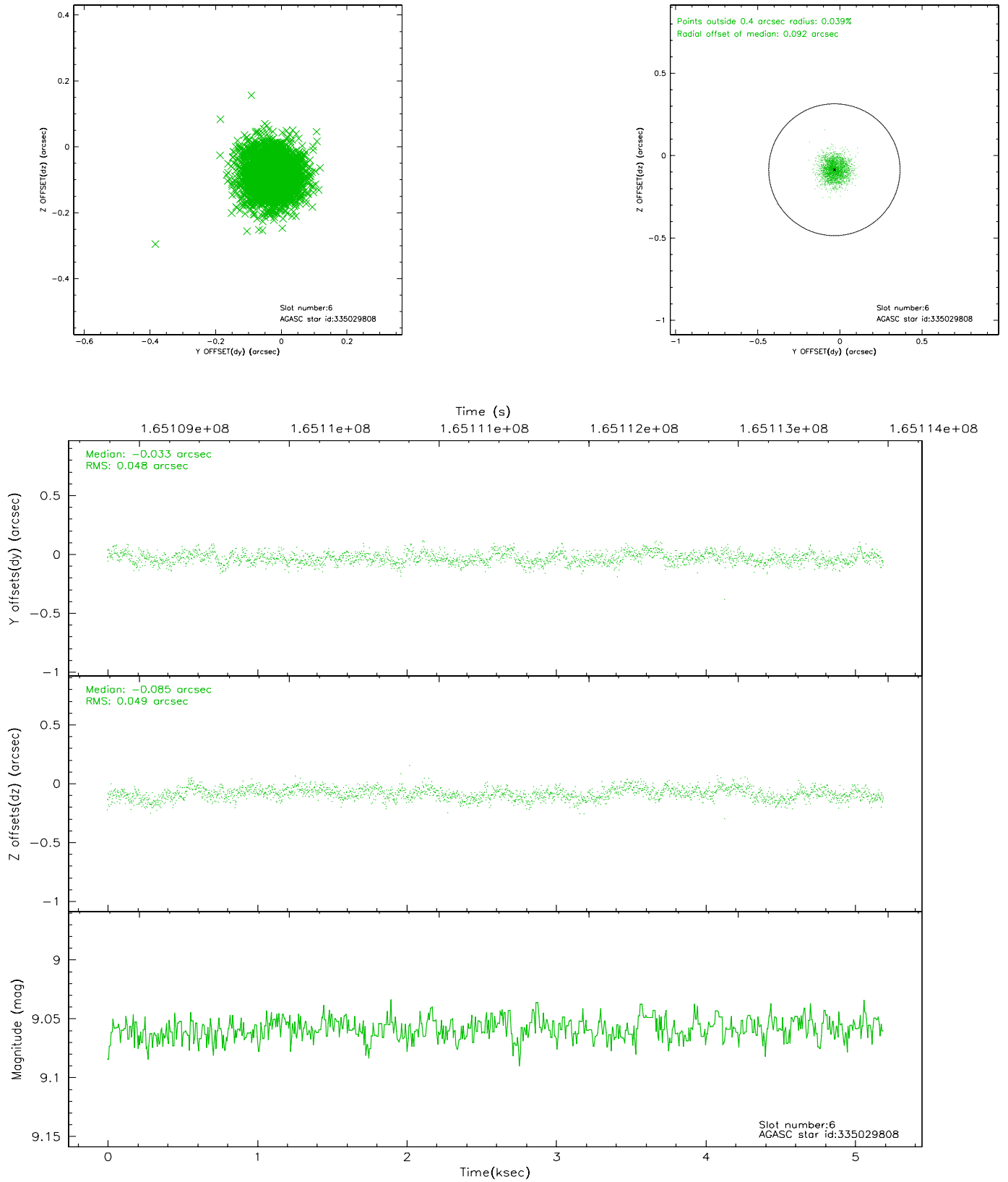
2.4.2 Slot 4



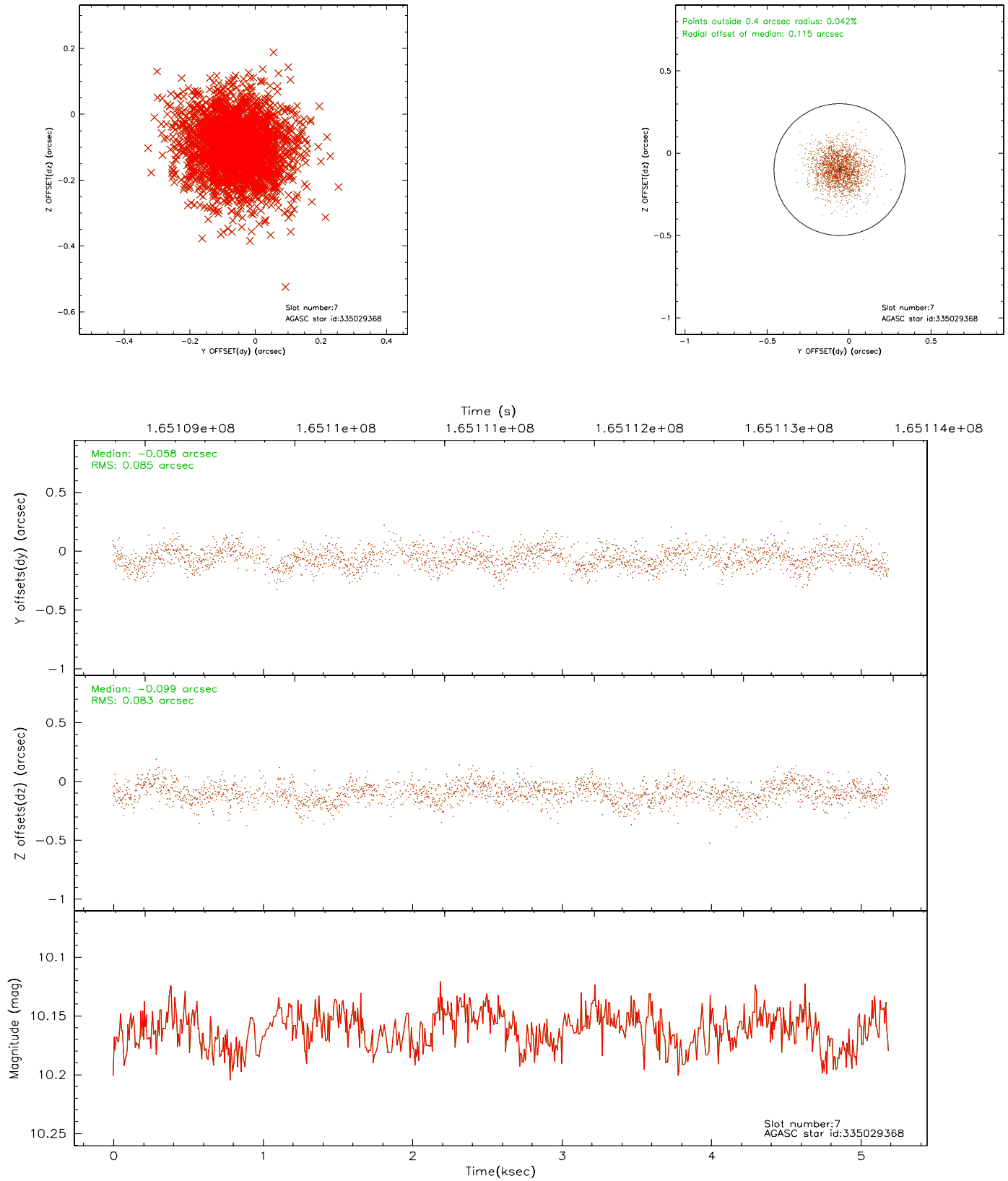
2.4.3 Slot 5



2.4.4 Slot 6

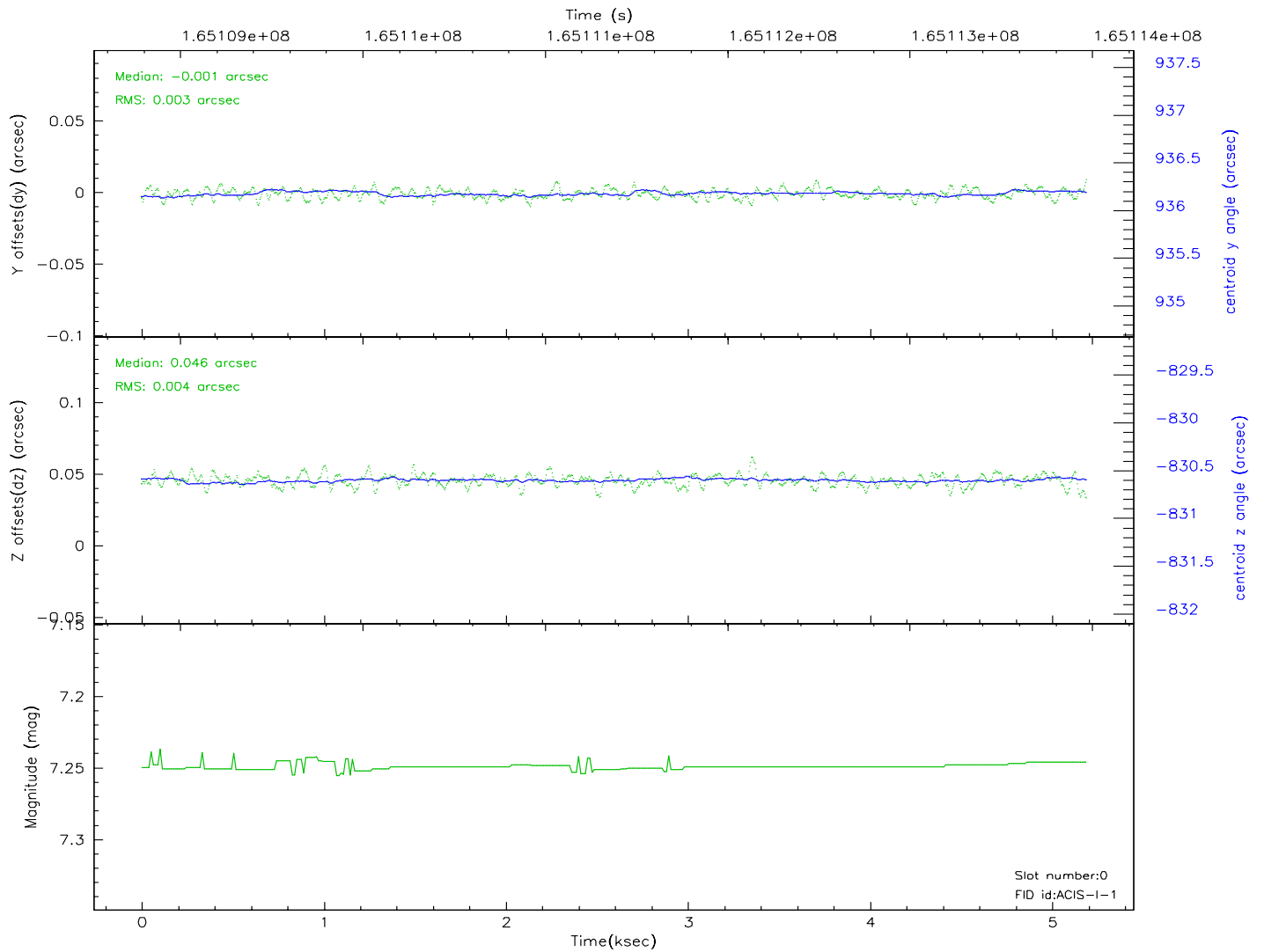
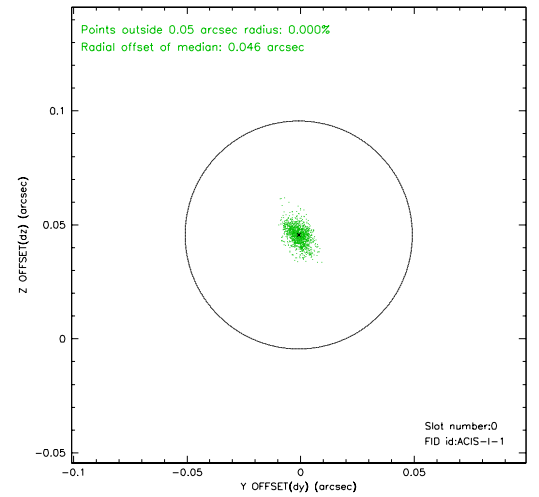
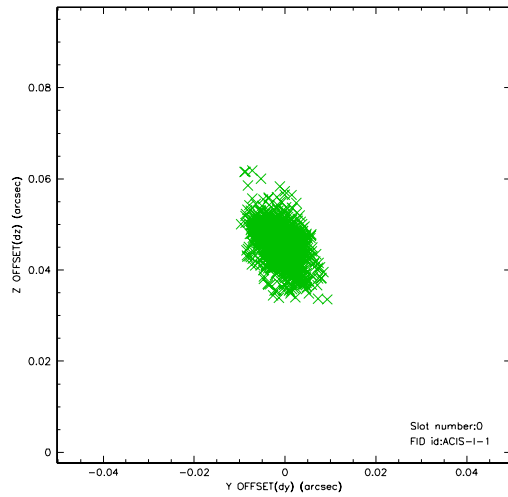


2.4.5 Slot 7

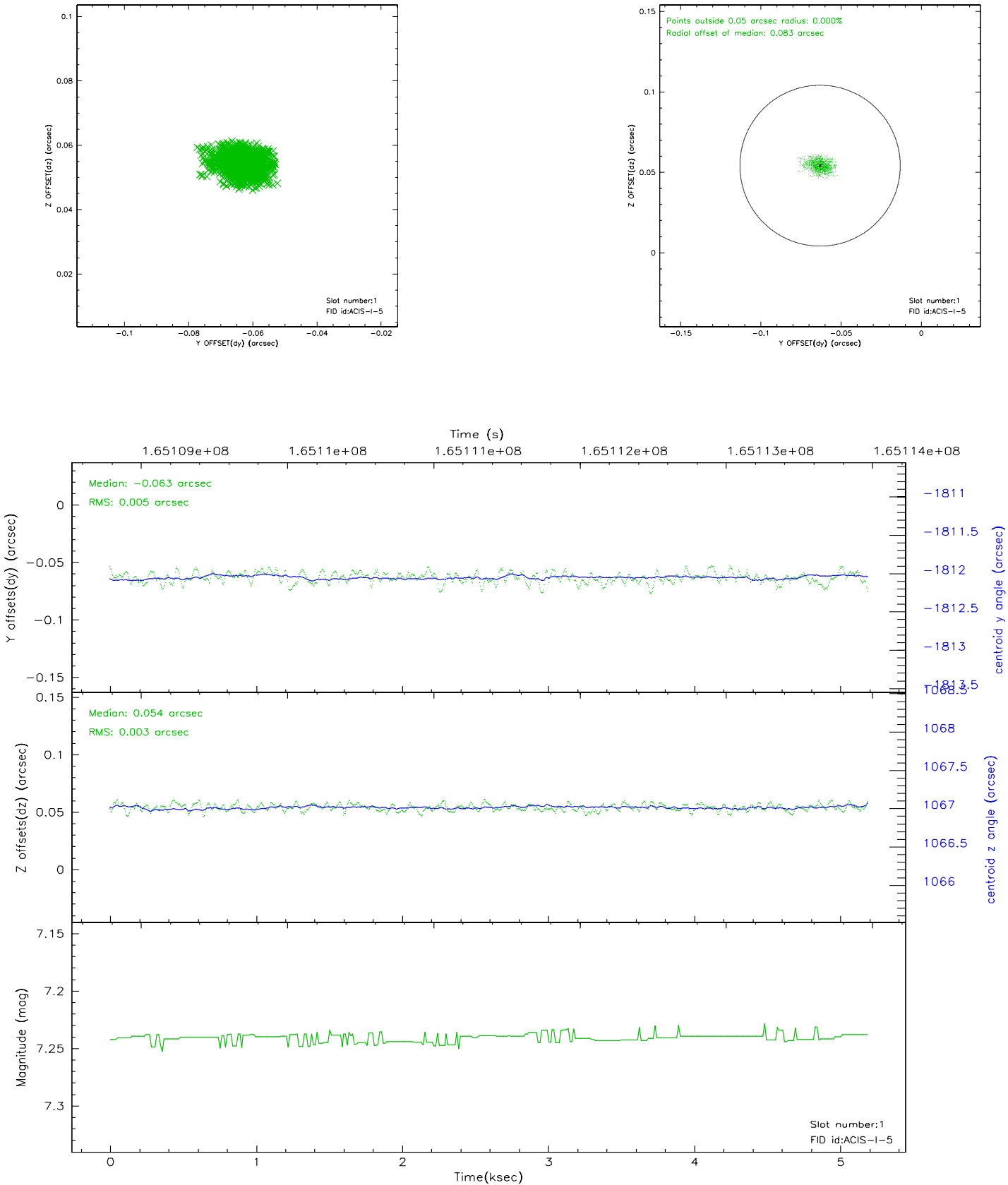


2.5 FID Slots

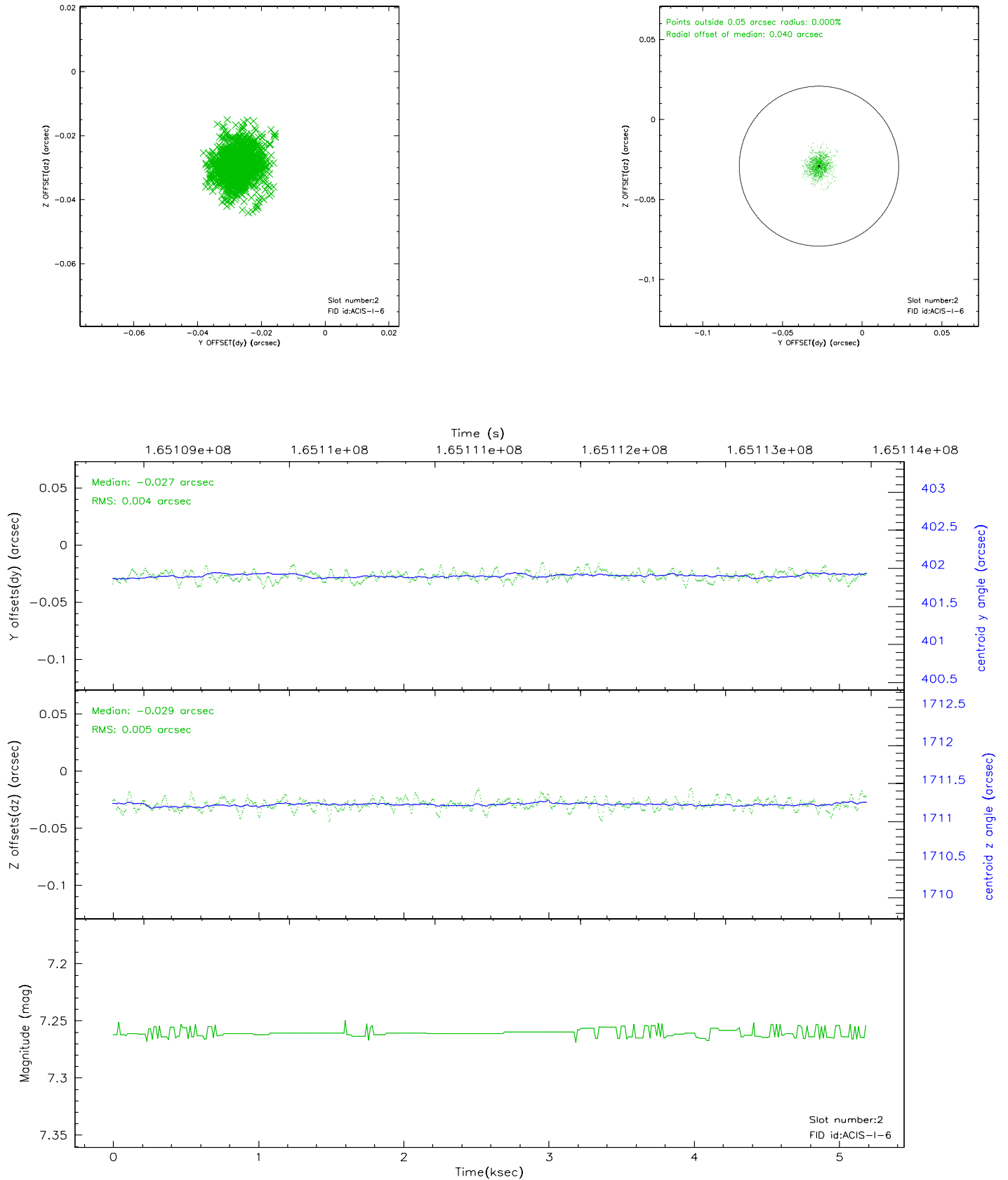
2.5.1 Slot 0



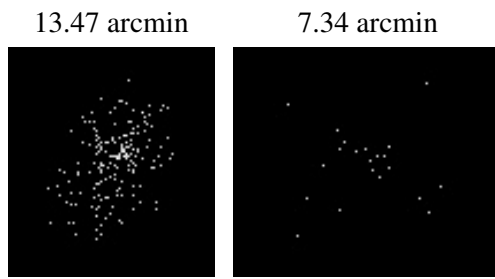
2.5.2 Slot 1



2.5.3 Slot 2



3 Point Sources



A Summary

A.1 Status

V&V Scientist	Jen Lauer
V&V Date (YYYY-MM-DD)	2006.07.30
V&V Edition	1
V&V Disposition and Status	OK
V&V Charge Time	4.773

A.2 Comments

Slot 7 only tracked for 90% of the aspect interval; it was therefore marked bad and was discarded by the aspect solution.