

V&V Reference Report

L2 ASCDS Version : 7.6.8

Observation 4241 - L2 Version 001
Chandra X-Ray Center

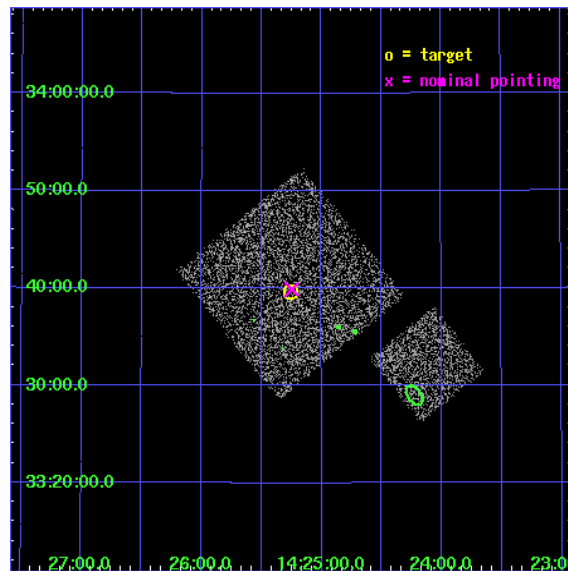
L2 Processing Date : Jul 25 2006

Contents

1	Front	2
2	OBI	3
2.1	OBI	3
2.1.1	Images	3
2.1.2	Bias	3
2.1.3	Parameters	4
2.1.4	Events	4
2.2	Compared Parameters	5
2.3	Aspect	6
2.4	Star Slots	9
2.4.1	Slot 3	9
2.4.2	Slot 4	10
2.4.3	Slot 5	11
2.4.4	Slot 6	12
2.4.5	Slot 7	13
2.5	FID Slots	14
2.5.1	Slot 0	14
2.5.2	Slot 1	15
2.5.3	Slot 2	16
3	Point Sources	17
A	Summary	18
A.1	Status	18
A.2	Comments	18

1 Front

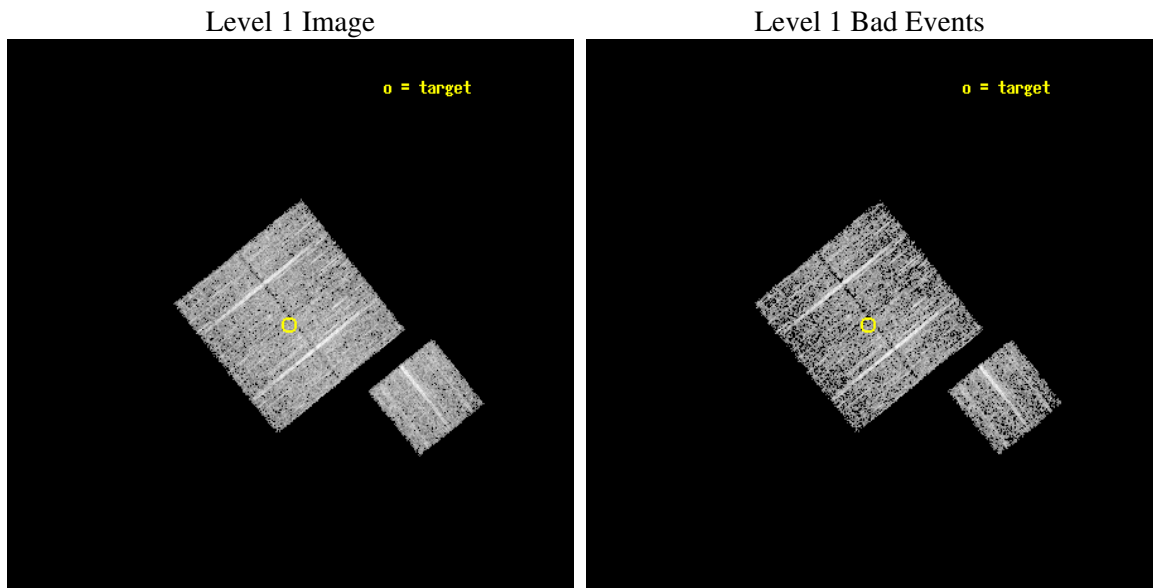
seq_num	900284
obs_id	4241
title	A CHANDRA WIDE-FIELD SURVEY TO MAP THE COSMIC WEB AND INVESTIGATE THE EVOLUTION OF NUCLEAR ACCRETION
observer	Dr. Christine Jones
object	SD16
dtcycle	0
cycle	P
ra_targ	216.314346
dec_targ	33.660612
ra_nom	216.31176119099
dec_nom	33.664654979566
roll_nom	141.01014558029
revision	2
ontime	4777.0999908149
livetime	4714.6836625851
ontime0	4773.9589806497
ontime1	4777.0999908149
ontime2	4777.0999908149
ontime3	4777.0999908149
ontime6	4777.0999908149
l2events	9905



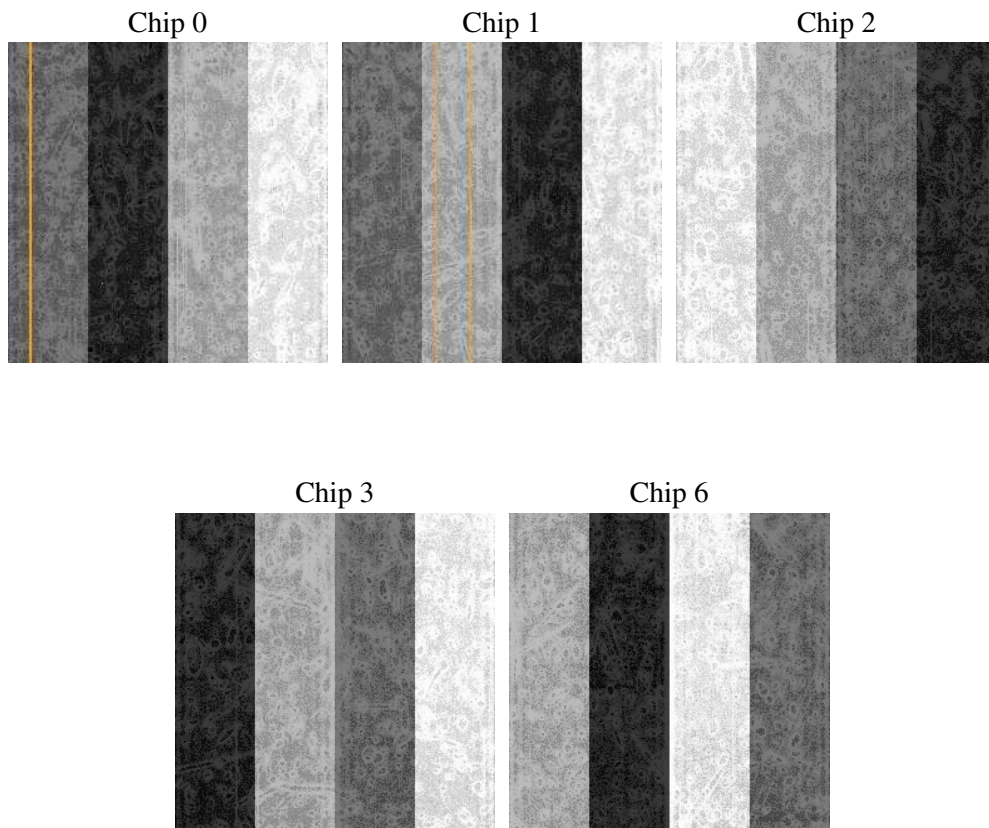
2 OBI

2.1 OBI

2.1.1 Images



2.1.2 Bias



2.1.3 Parameters

obi_num	0
ascdsver	7.6.8
caldbver	3.2.2
date	2006-07-25T20:50:15
revision	2

sched_exp_time	5000.000000
ontime	4780.6228114367
ontime0	4777.4818211794
ontime1	4780.6228313446
ontime2	4780.6228114367
ontime3	4780.6228114367
ontime6	4780.6228114367
l1events	121969

2.1.4 Events

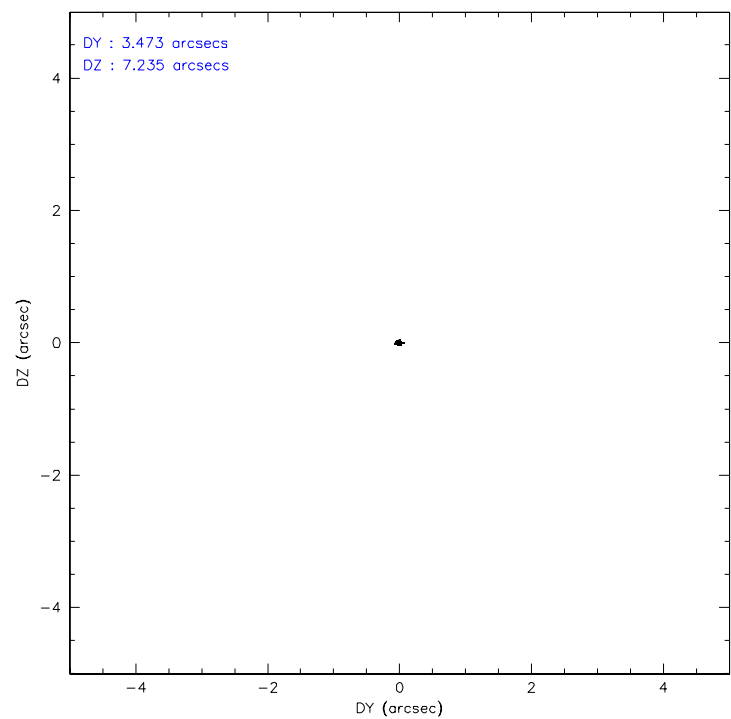
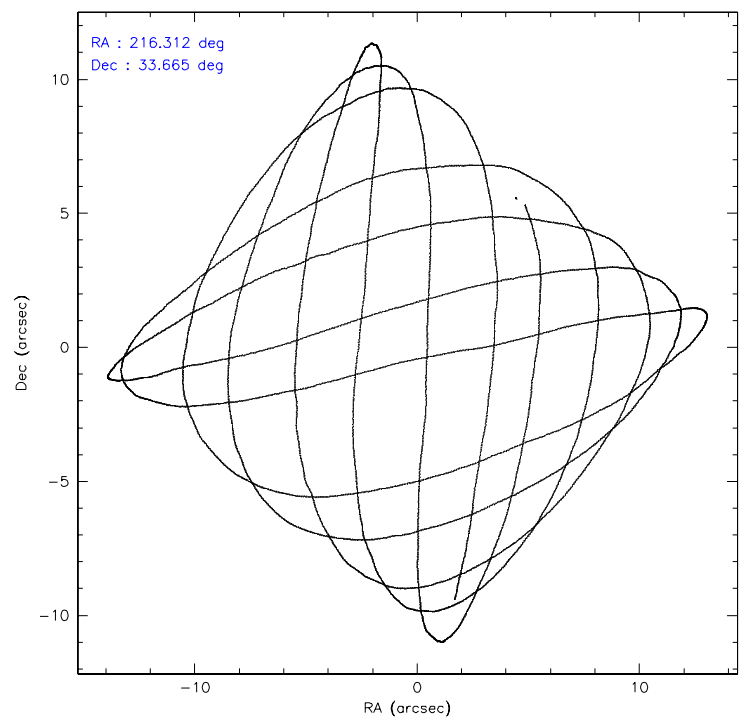
	ccd 0	ccd 1	ccd 2	ccd 3	ccd 6
level 1 events	24181	22261	26327	24395	24805
rejected events	21699	19783	23983	22043	22391
rejected %	89%	88%	91%	90%	90%

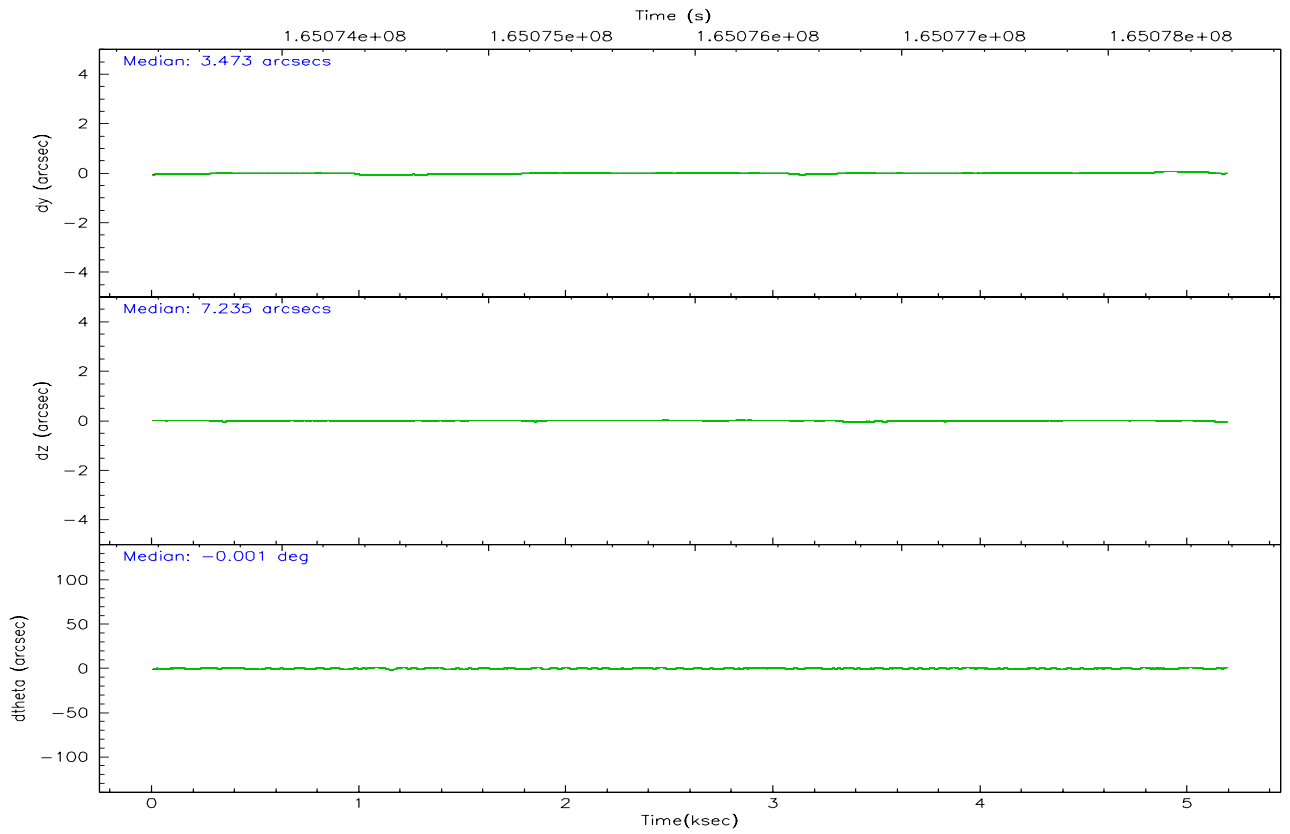
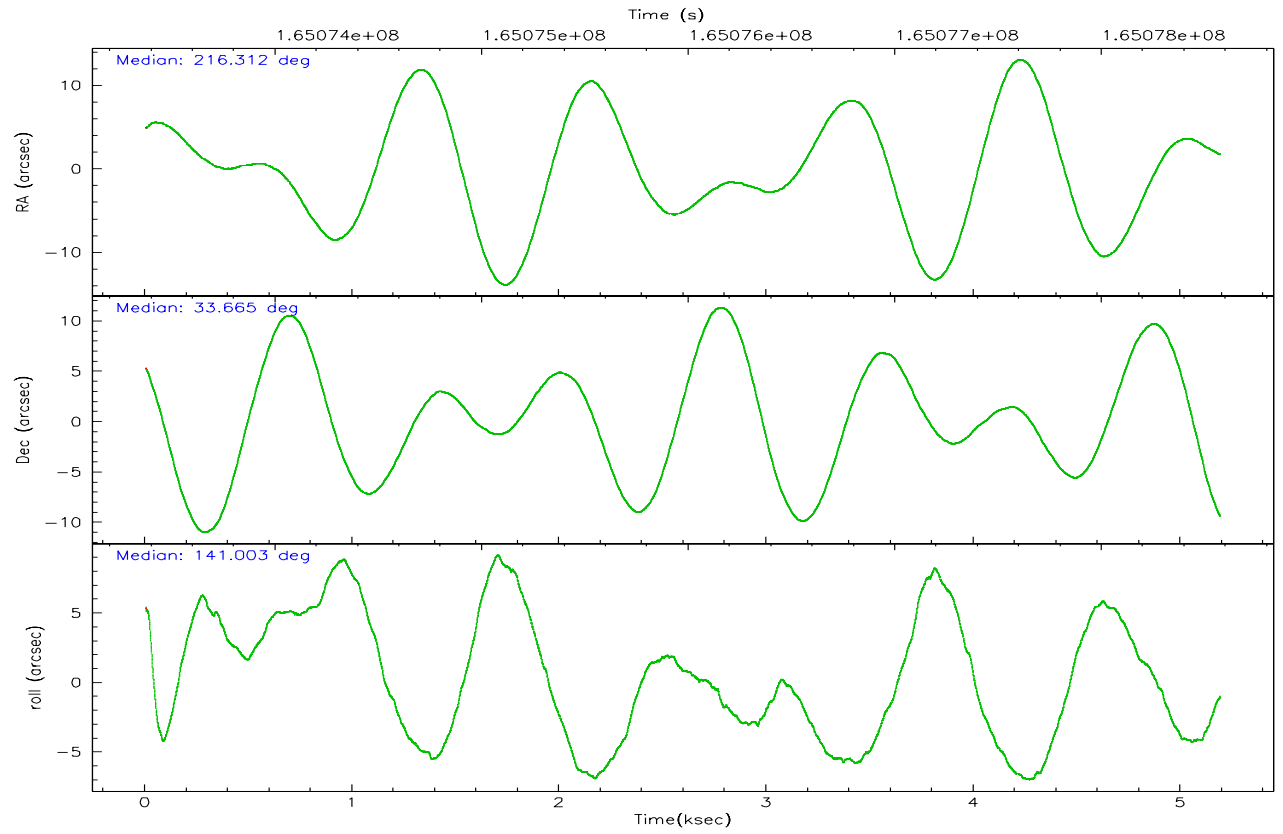
	ccd 0	ccd 1	ccd 2	ccd 3	ccd 6
grade 0 events	880	868	936	929	866
	3%	3%	3%	3%	3%
grade 1 events	9	15	13	8	7
	0%	0%	0%	0%	0%
grade 2 events	578	534	518	476	514
	2%	2%	1%	1%	2%
grade 3 events	309	301	269	235	273
	1%	1%	1%	0%	1%
grade 4 events	278	295	257	271	278
	1%	1%	0%	1%	1%
grade 5 events	679	771	694	807	767
	2%	3%	2%	3%	3%
grade 6 events	440	482	367	443	485
	1%	2%	1%	1%	1%
grade 7 events	21008	18995	23273	21226	21615
	86%	85%	88%	87%	87%

2.2 Compared Parameters

Parameter	Planned	Actual	Parameter	Planned	Actual
Instrument	ACIS	ACIS	Obspar format version number	6	6
Detector	ACIS-01236	ACIS-01236	Obspar file type	PREDICTED	ACTUAL
Grating	NONE	NONE	Obspar update status	NONE	UPDATED
Data mode	VFAINT	VFAINT	On-chip summing requested	N	N
Observation mode	POINTING	POINTING	Subarray requested	NONE	NONE
Pointing RA	216.344237	216.311761190993	Alternating exposures requested	N	N
Pointing Dec	33.660532	33.66465497956562	Primary exposure time	0.000000	3.1
Pointing Roll	140.783431	141.0101455802869			
SIM focus pos (mm)	-0.782348	-0.7809083437167272			
SIM defocus (mm)	0	0.001439871863259334			
SIM translation stage pos (mm)	-233.592463	-233.5874344608287			
SIM translation stage offset (mm)	0	-0.005018542100998502			
Observation start time	165073569.184000	165073193.41156			
Observation start date	2003-03-26T13:45:05	2003-03-26T13:39:53			
Observation end time	165078569.184000	165078703.81179			
Observation end date	2003-03-26T15:08:25	2003-03-26T15:11:43			
Read mode	TIMED	TIMED			

2.3 Aspect



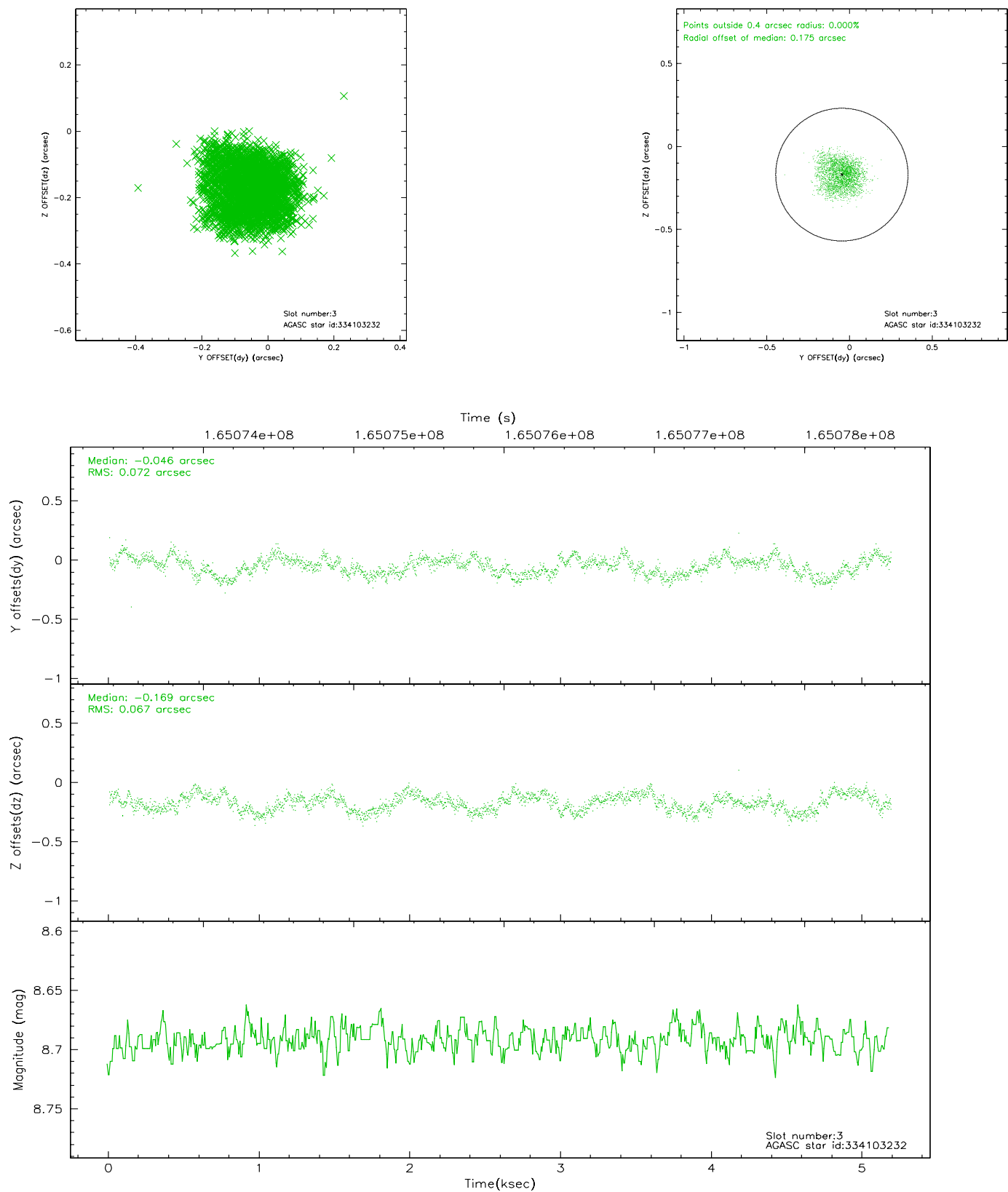


Slot Statistics

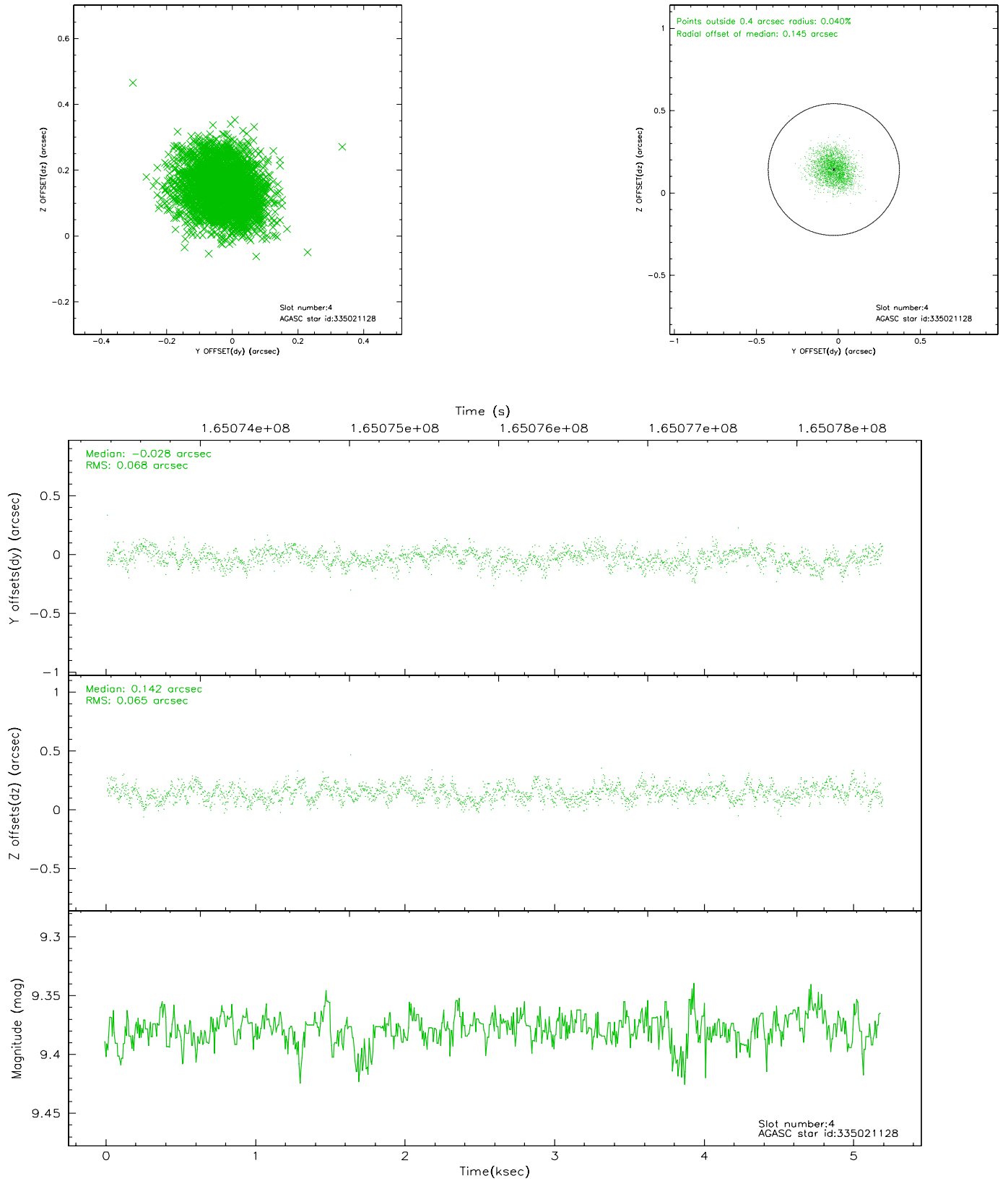
slot	status	id	mag	n_pts	med_dy	med_dz	dr1	dr2	ra	dec	mean_y	mean_z
0	FID	ACIS-I-1	7.25	1266	-0.003	0.046	0.006	0.010	0.000000	0.000000	936.30	-830.60
1	FID	ACIS-I-5	7.24	1266	-0.059	0.053	0.006	0.009	0.000000	0.000000	-1811.19	1066.36
2	FID	ACIS-I-6	7.26	1266	-0.029	-0.029	0.006	0.011	0.000000	0.000000	400.59	1712.07
3	GUIDE	334103232	8.69	2531	-0.046	-0.169	0.107	0.161	215.850271	33.571936	948.75	1181.29
4	GUIDE	335021128	9.38	2521	-0.028	0.142	0.101	0.158	216.159551	34.422539	2160.70	-1777.98
5	GUIDE	335028696	9.16	2529	0.019	0.300	0.095	0.152	217.260519	33.844112	-1695.56	-2254.05
6	GUIDE	335029808	9.06	2531	0.051	-0.086	0.069	0.112	216.789548	33.180488	-2130.54	487.37
7	GUIDE	335030152	9.70	2524	0.013	-0.190	0.143	0.226	216.202154	33.091054	-964.64	1859.21

2.4 Star Slots

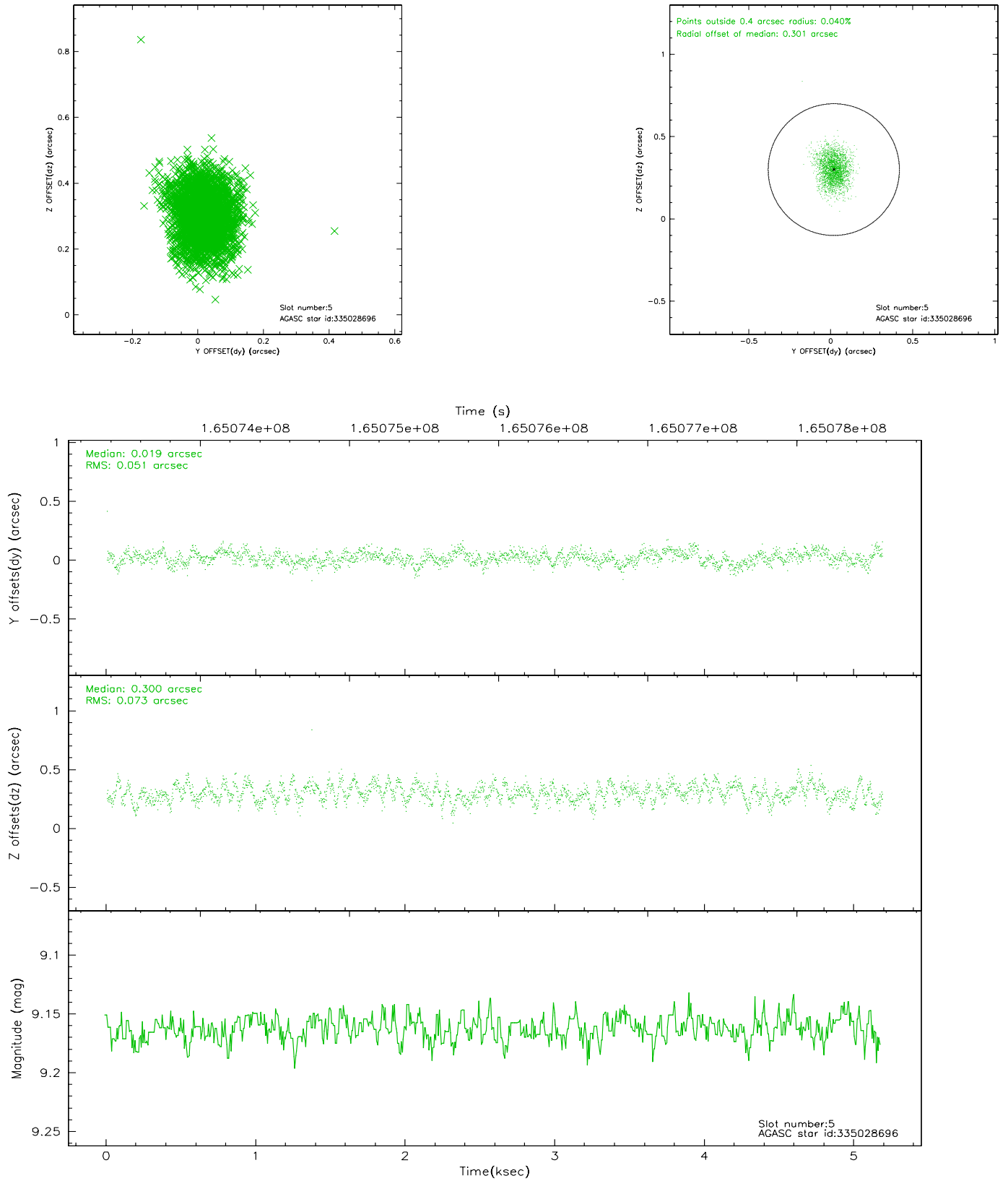
2.4.1 Slot 3



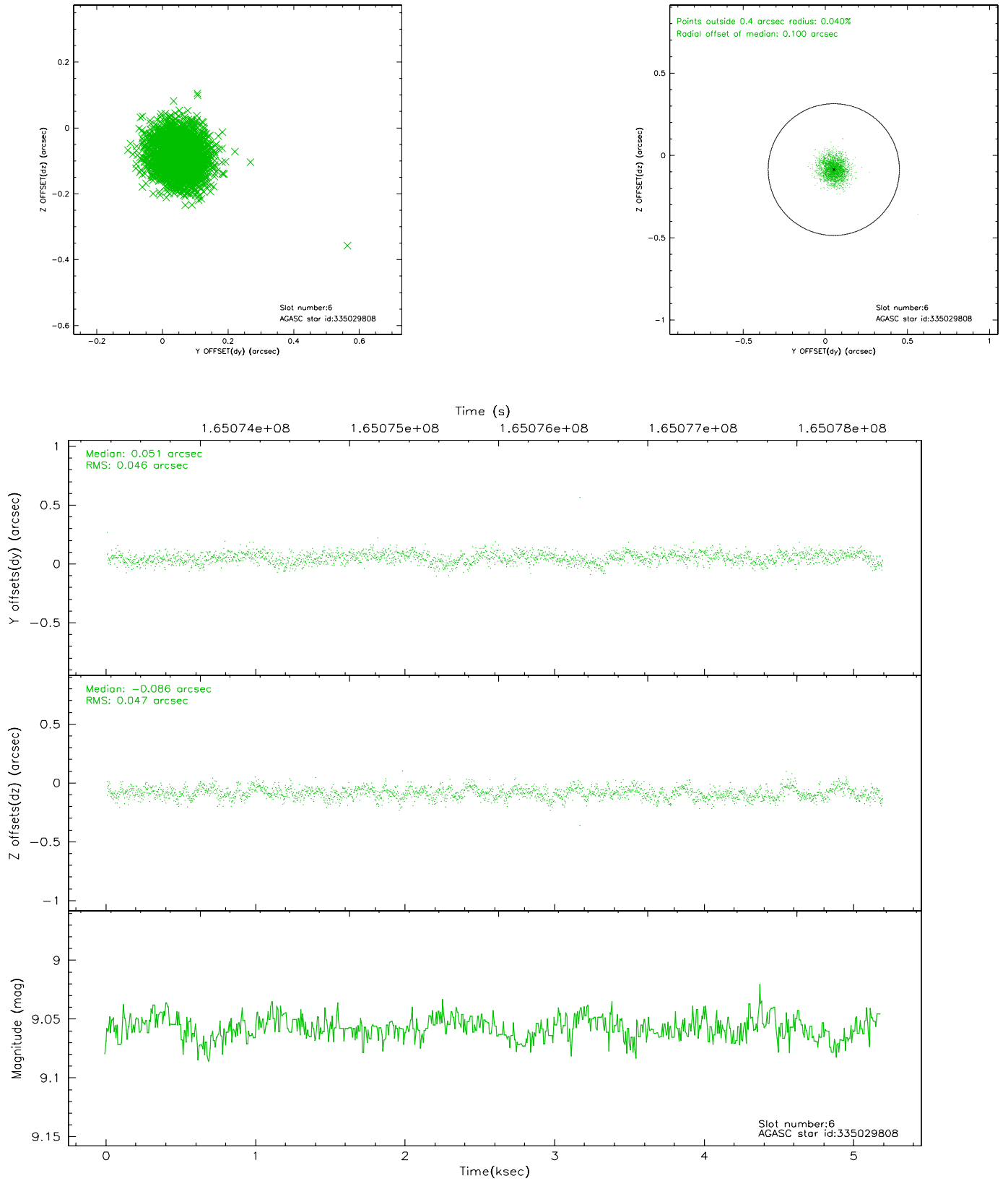
2.4.2 Slot 4



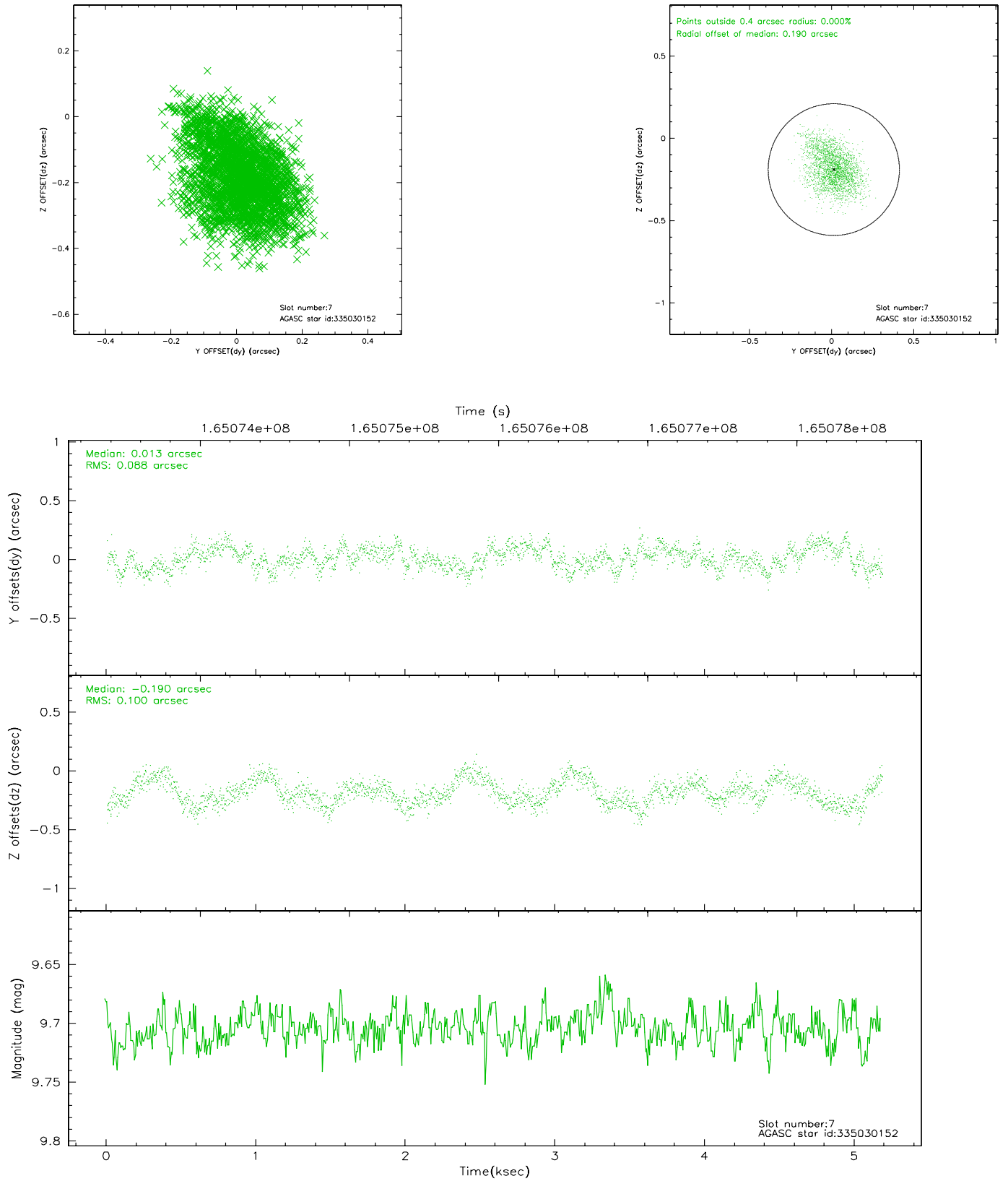
2.4.3 Slot 5



2.4.4 Slot 6

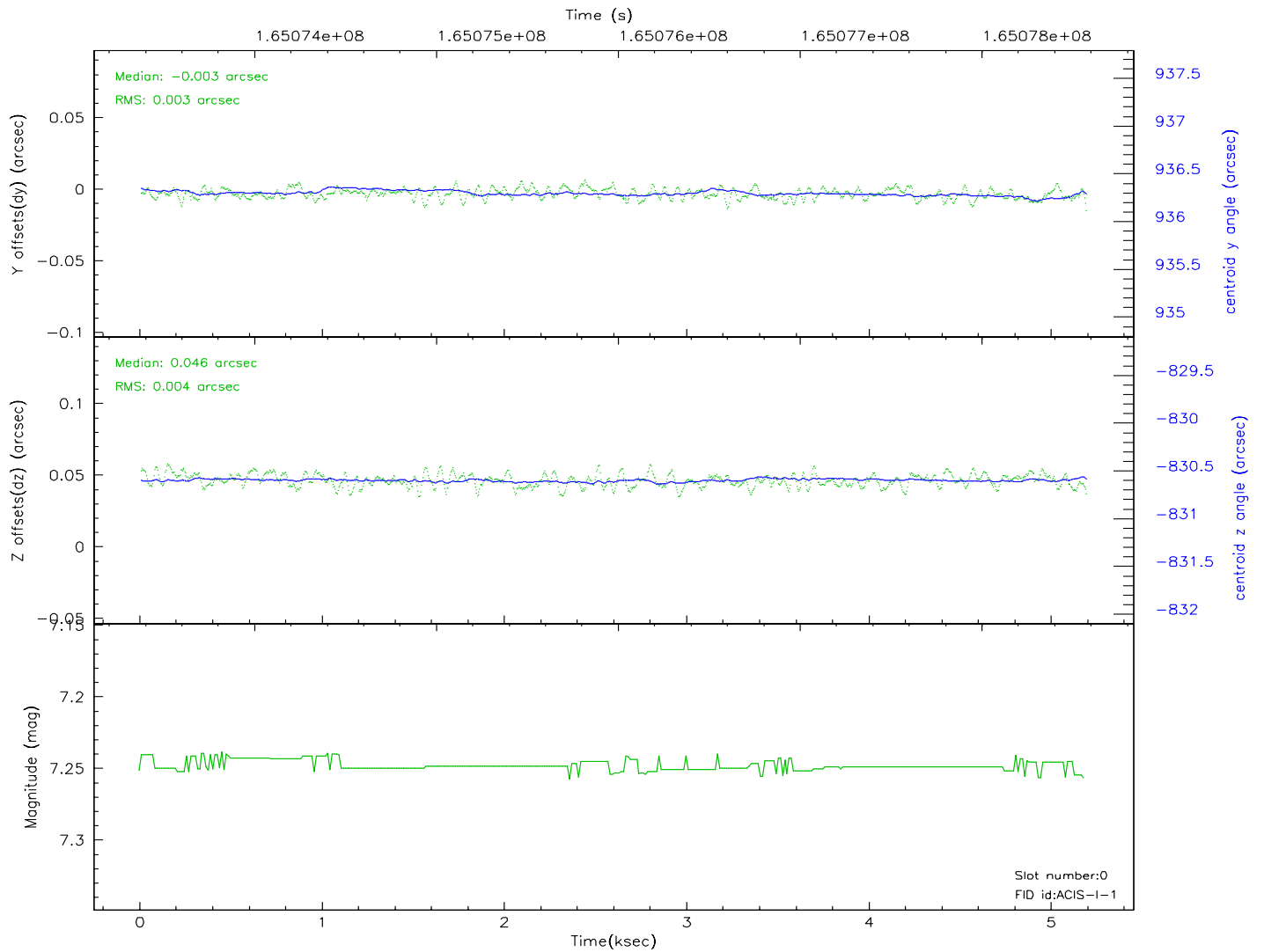
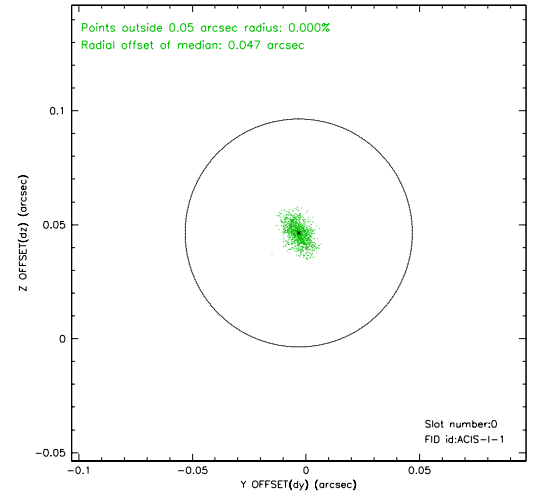
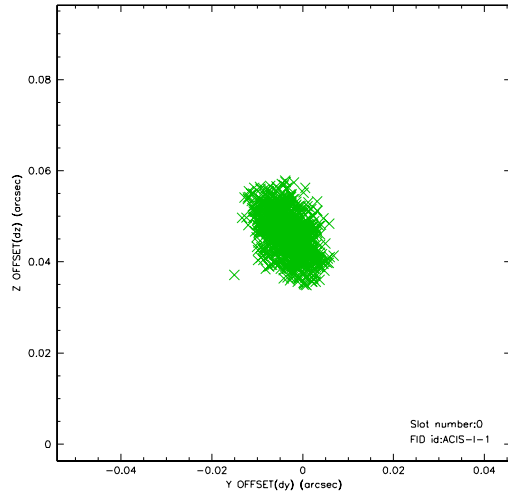


2.4.5 Slot 7

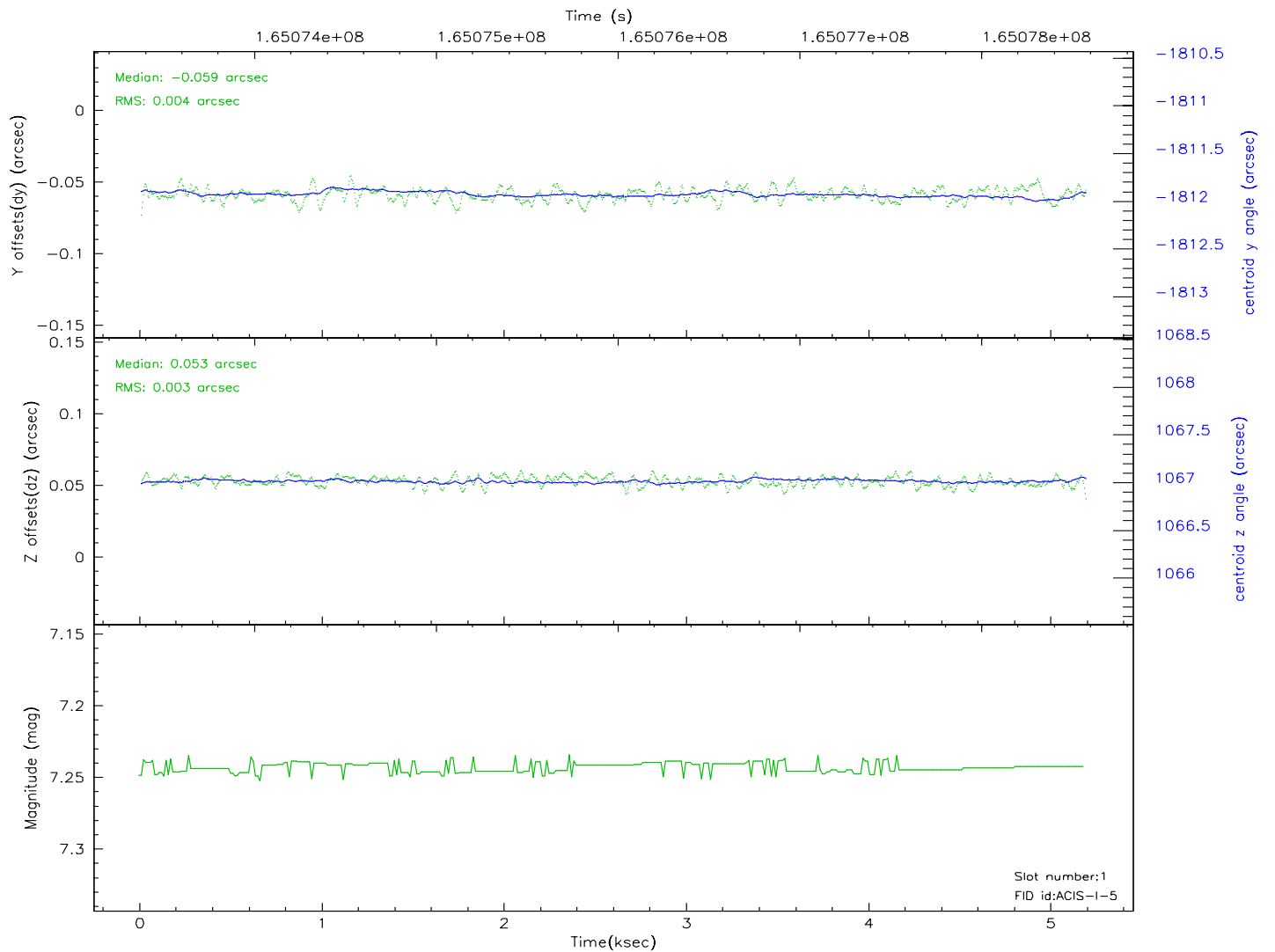
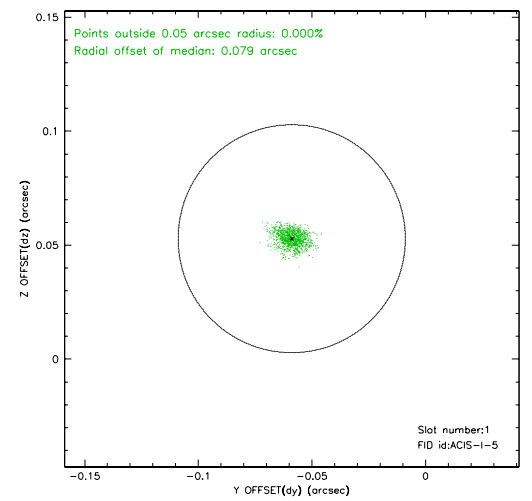
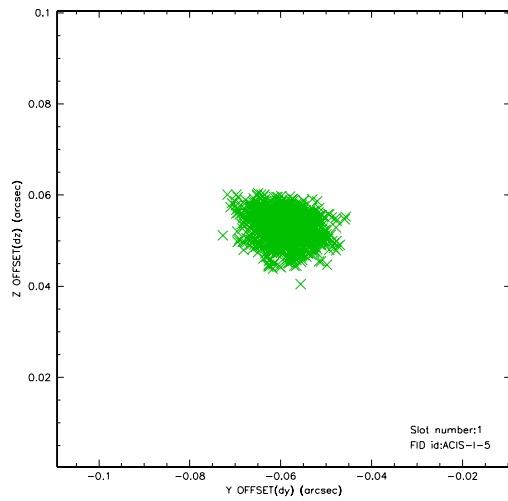


2.5 FID Slots

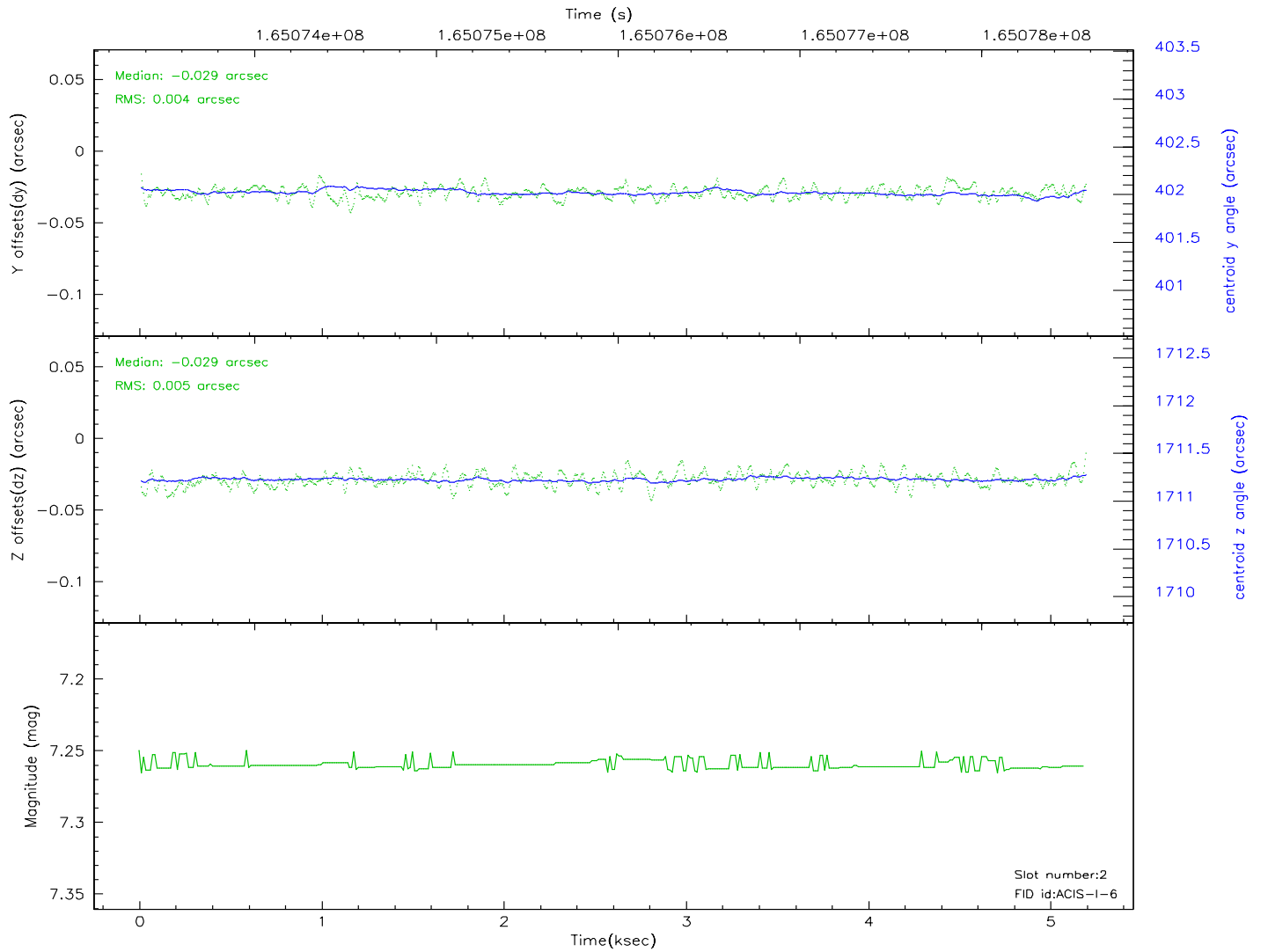
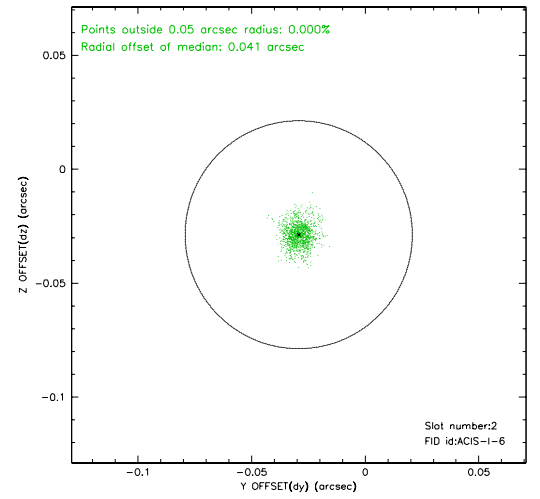
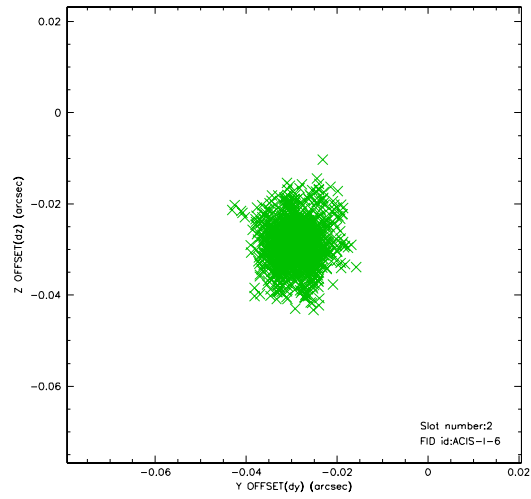
2.5.1 Slot 0



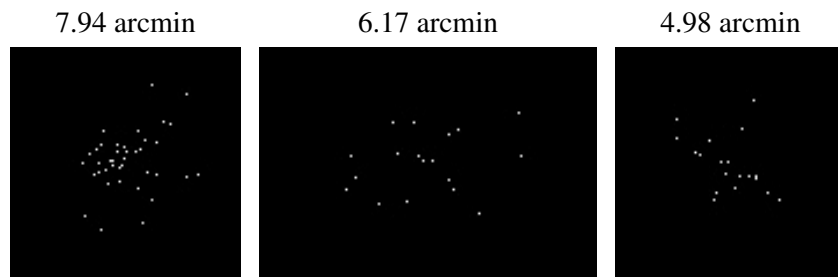
2.5.2 Slot 1



2.5.3 Slot 2



3 Point Sources



A Summary

A.1 Status

V&V Scientist	Beth Sundheim
V&V Date (YYYY-MM-DD)	2006.07.26
V&V Edition	1
V&V Disposition and Status	OK
V&V Charge Time	4.777

A.2 Comments