

V&V Reference Report

L2 ASCDS Version : 7.6.8

Observation 4237 - L2 Version 001
Chandra X-Ray Center

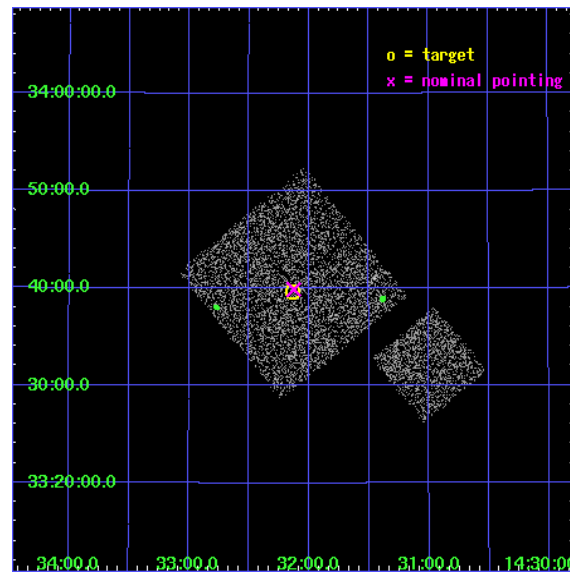
L2 Processing Date : Jul 29 2006

Contents

1	Front	2
2	OBI	3
2.1	OBI	3
2.1.1	Images	3
2.1.2	Bias	3
2.1.3	Parameters	4
2.1.4	Events	4
2.2	Compared Parameters	5
2.3	Aspect	6
2.4	Star Slots	9
2.4.1	Slot 3	9
2.4.2	Slot 4	10
2.4.3	Slot 5	11
2.4.4	Slot 6	12
2.4.5	Slot 7	13
2.5	FID Slots	14
2.5.1	Slot 0	14
2.5.2	Slot 1	15
2.5.3	Slot 2	16
3	Point Sources	17
A	Summary	18
A.1	Status	18
A.2	Comments	18

1 Front

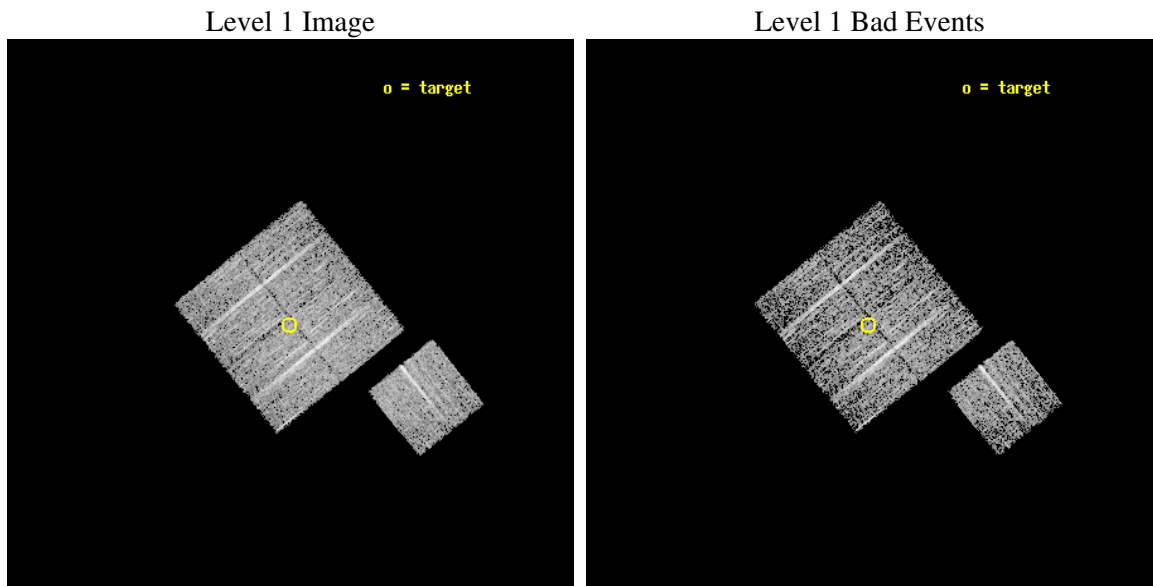
seq_num	900280
obs_id	4237
title	A CHANDRA WIDE-FIELD SURVEY TO MAP THE COSMIC WEB AND INVESTIGATE THE EVOLUTION OF NUCLEAR ACCRETION
observer	Dr. Christine Jones
object	SS4
dtcycle	0
cycle	P
ra_targ	218.034014
dec_targ	33.660612
ra_nom	218.03135234422
dec_nom	33.664623223772
roll_nom	141.01017017671
revision	2
ontime	4674.7999910116
livetime	4613.7202875914
ontime0	4674.7999910116
ontime1	4674.7999910116
ontime2	4674.7999910116
ontime3	4674.7999910116
ontime6	4674.7999910116
l2events	9159



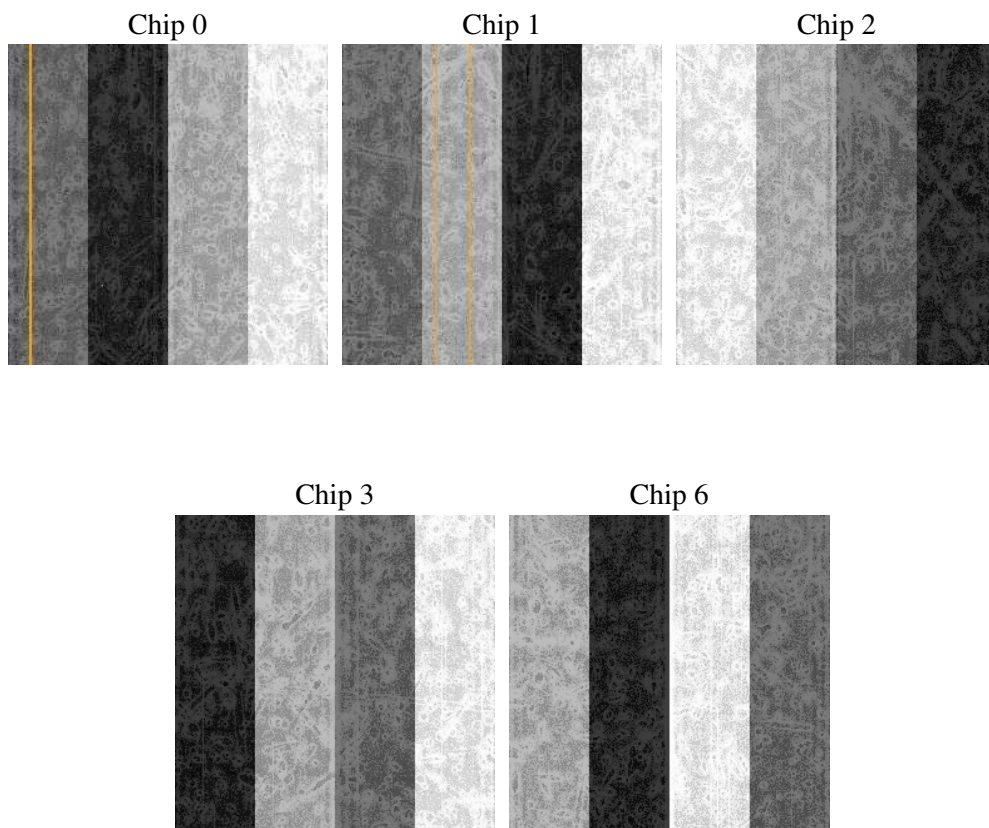
2 OBI

2.1 OBI

2.1.1 Images



2.1.2 Bias



2.1.3 Parameters

obi_num	1
ascdsver	7.6.8
caldsver	3.2.2
date	2006-07-29T21:35:39
revision	2

sched_exp_time	4900.000000
ontime	4680.1054073274
ontime0	4680.1054272652
ontime1	4680.1054073274
ontime2	4680.1054272652
ontime3	4680.1054073274
ontime6	4680.1054073274
l1events	117617

2.1.4 Events

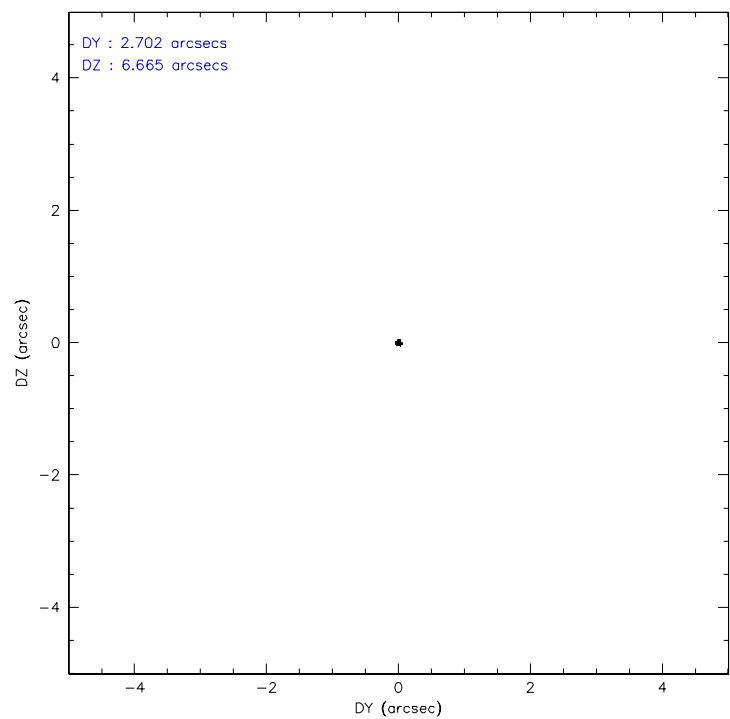
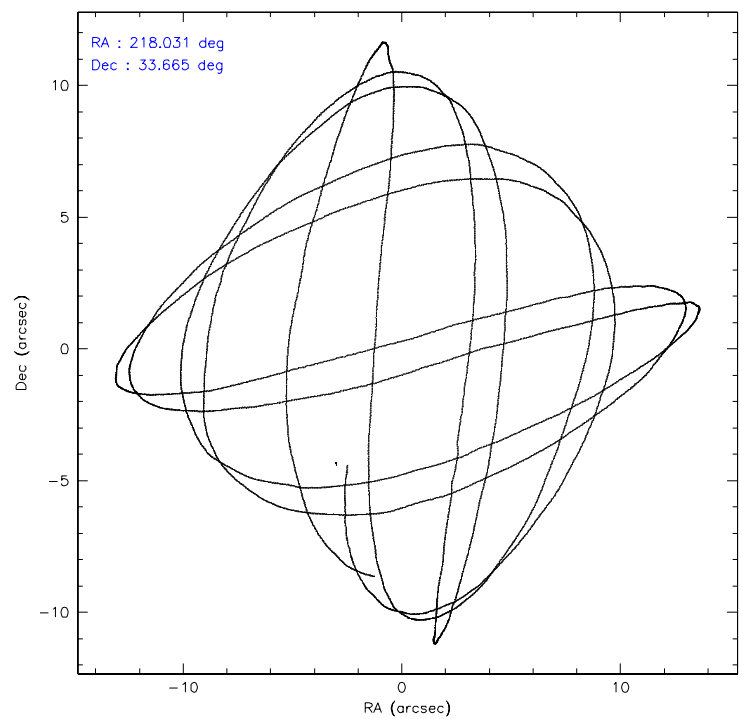
	ccd 0	ccd 1	ccd 2	ccd 3	ccd 6
level 1 events	20652	22457	25742	24812	23954
rejected events	18574	20023	23385	22687	21675
rejected %	89%	89%	90%	91%	90%

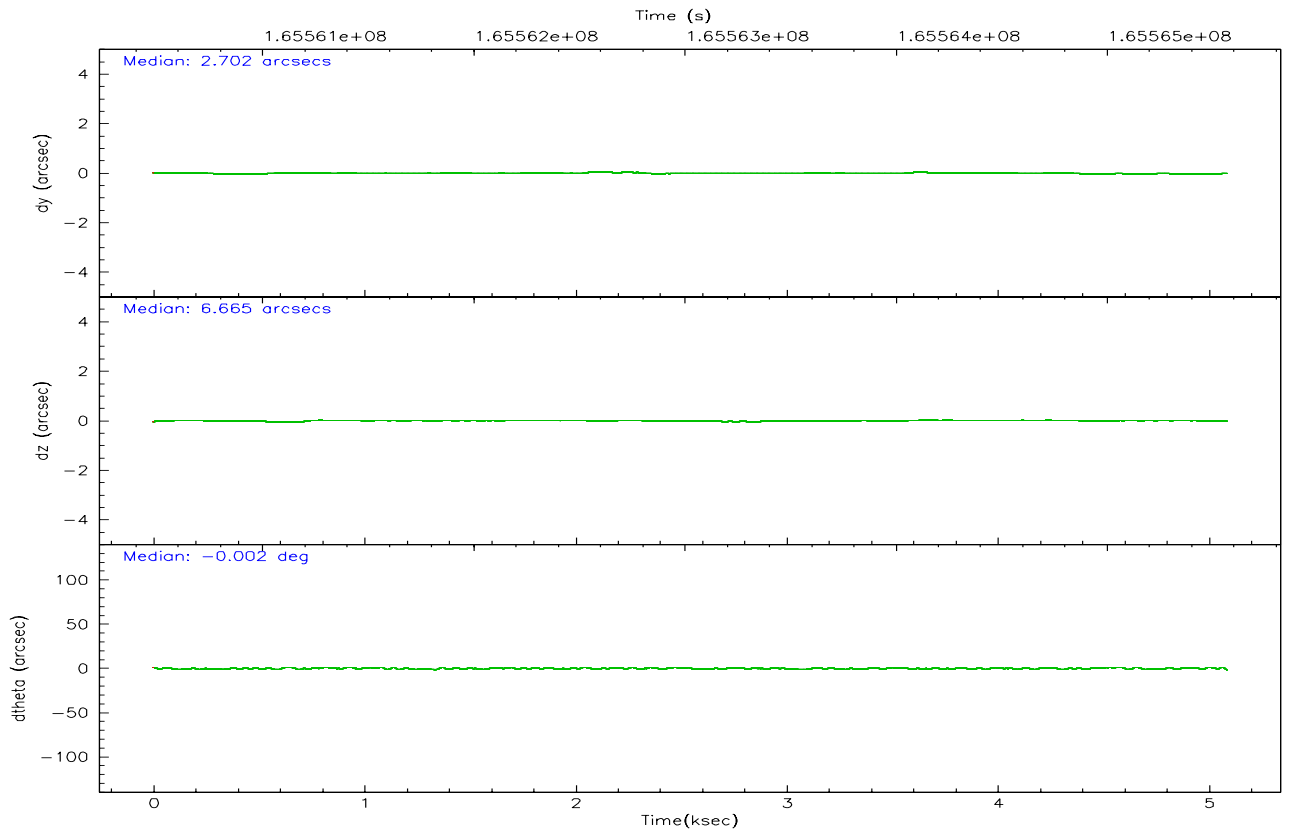
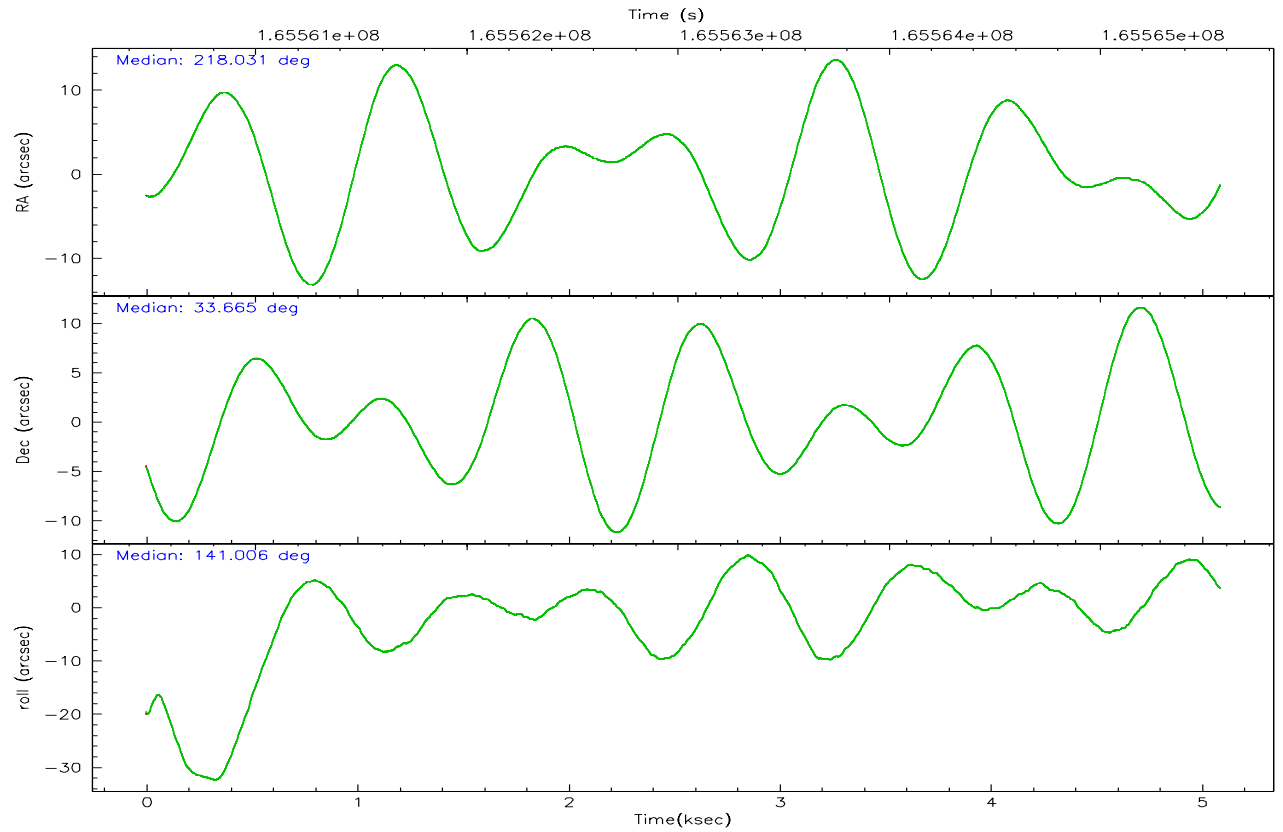
	ccd 0	ccd 1	ccd 2	ccd 3	ccd 6
grade 0 events	728	831	975	761	835
	3%	3%	3%	3%	3%
grade 1 events	7	13	15	15	4
	0%	0%	0%	0%	0%
grade 2 events	473	513	470	467	496
	2%	2%	1%	1%	2%
grade 3 events	249	287	264	268	255
	1%	1%	1%	1%	1%
grade 4 events	220	312	285	226	268
	1%	1%	1%	0%	1%
grade 5 events	660	759	643	766	792
	3%	3%	2%	3%	3%
grade 6 events	410	491	364	405	425
	1%	2%	1%	1%	1%
grade 7 events	17905	19251	22726	21904	20879
	86%	85%	88%	88%	87%

2.2 Compared Parameters

Parameter	Planned	Actual	Parameter	Planned	Actual
Instrument	ACIS	ACIS	Obspar format version number	6	6
Detector	ACIS-01236	ACIS-01236	Obspar file type	PREDICTED	ACTUAL
Grating	NONE	NONE	Obspar update status	NONE	UPDATED
Data mode	VFAINT	VFAINT	On-chip summing requested	N	N
Observation mode	POINTING	POINTING	Subarray requested	NONE	NONE
Pointing RA	218.063908	218.0313523442151	Alternating exposures requested	N	N
Pointing Dec	33.660533	33.6646232237723	Primary exposure time	0.000000	3.1
Pointing Roll	140.783433	141.0101701767141			
SIM focus pos (mm)	-0.782348	-0.7809083437167272			
SIM defocus (mm)	0	0.001439871863259334			
SIM translation stage pos (mm)	-233.592463	-233.5874344608287			
SIM translation stage offset (mm)	0	-0.005018542100998502			
Observation start time	165560664.184000	165560287.7821			
Observation start date	2003-04-01T05:03:20	2003-04-01T04:58:07			
Observation end time	165565564.184000	165565697.73232			
Observation end date	2003-04-01T06:25:00	2003-04-01T06:28:17			
Read mode	TIMED	TIMED			

2.3 Aspect



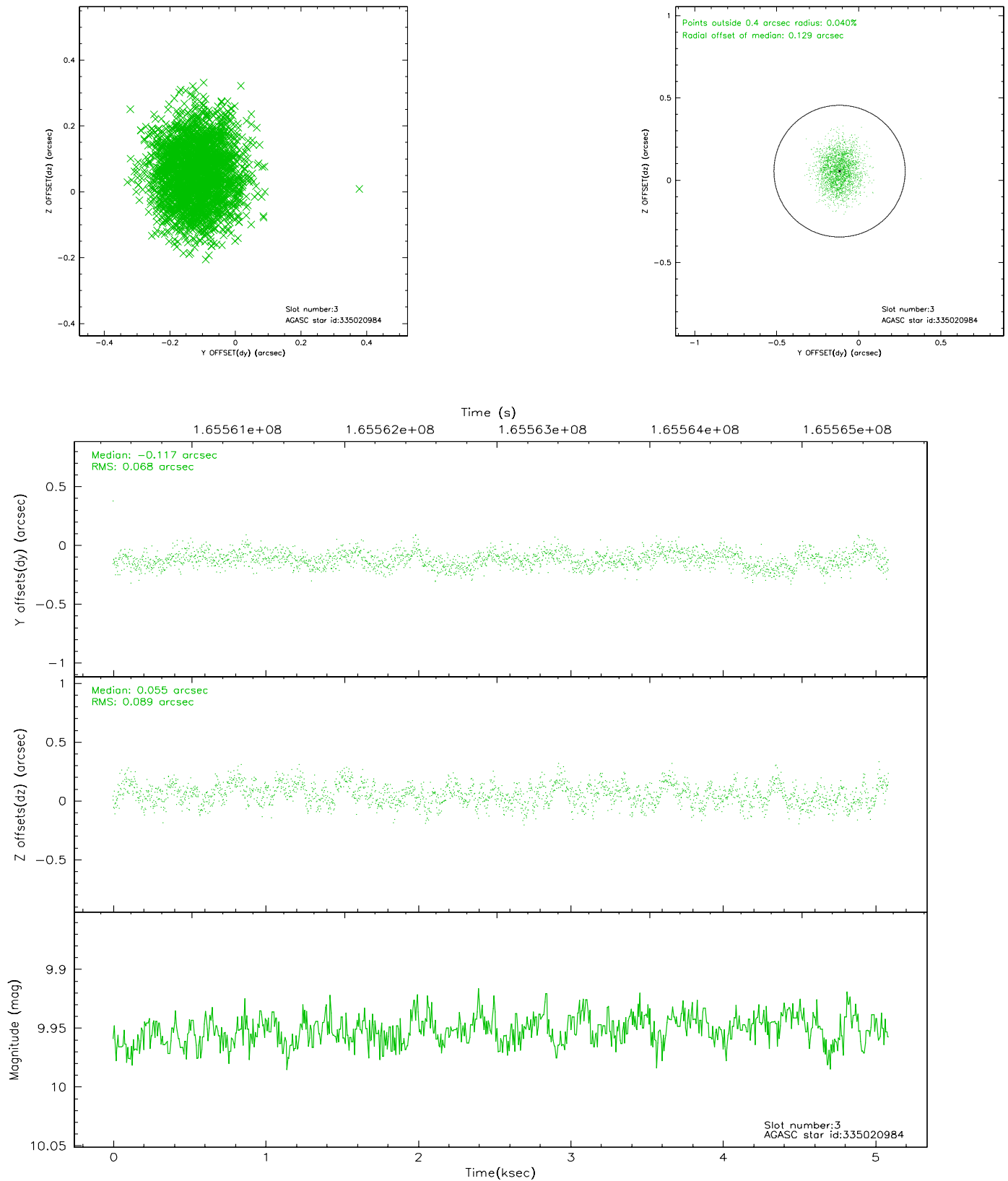


Slot Statistics

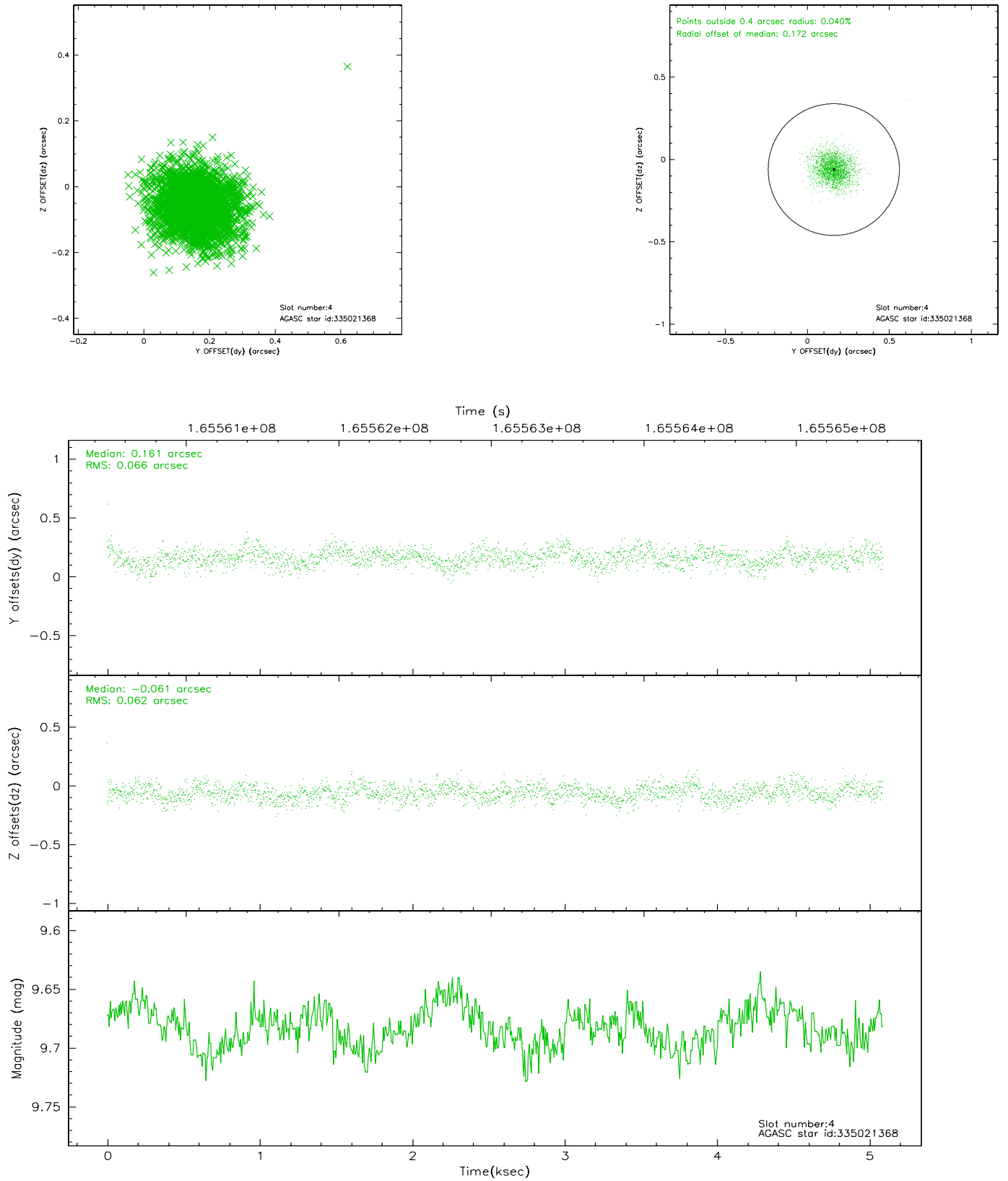
slot	status	id	mag	n_pts	med_dy	med_dz	dr1	dr2	ra	dec	mean_y	mean_z
0	FID	ACIS-I-1	7.24	1242	-0.041	0.031	0.006	0.011	0.000000	0.000000	937.06	-830.02
1	FID	ACIS-I-2	7.15	1241	0.015	-0.058	0.009	0.016	0.000000	0.000000	-756.31	-837.13
2	FID	ACIS-I-5	7.24	1242	-0.066	0.099	0.007	0.013	0.000000	0.000000	-1811.77	1066.95
3	GUIDE	335020984	9.95	2479	-0.117	0.055	0.119	0.191	218.841668	33.815112	-1444.21	-1909.01
4	GUIDE	335021368	9.68	2479	0.161	-0.061	0.095	0.159	217.529643	33.934817	1863.05	239.98
5	GUIDE	335027640	9.11	2483	0.003	0.033	0.073	0.119	218.092211	33.193770	-1127.58	1247.94
6	GUIDE	335028696	9.22	2480	0.041	0.115	0.103	0.161	217.260519	33.844112	2284.58	1000.27
7	GUIDE	335029384	8.50	2481	-0.079	-0.141	0.071	0.114	217.848061	33.088477	-796.47	2006.83

2.4 Star Slots

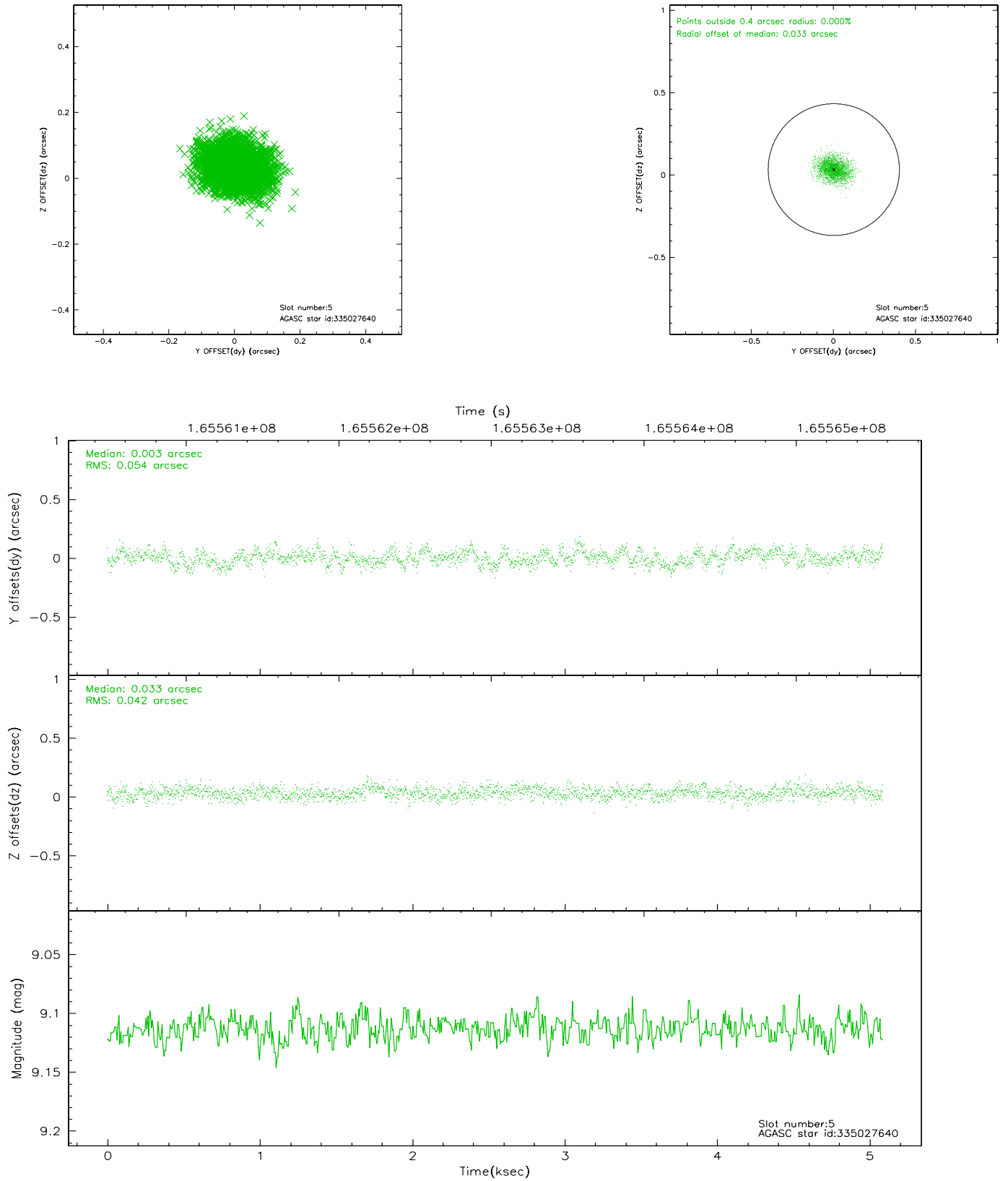
2.4.1 Slot 3



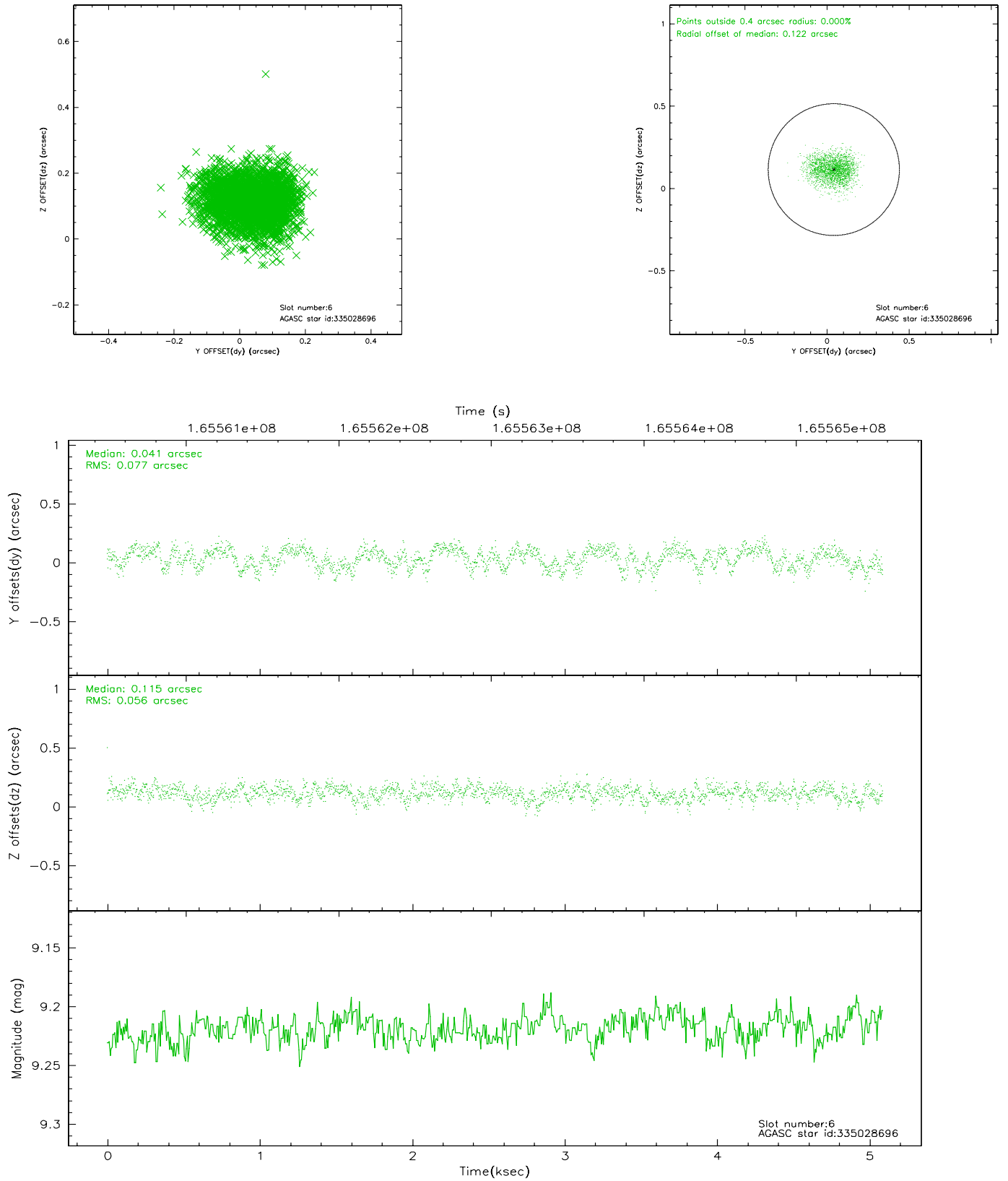
2.4.2 Slot 4



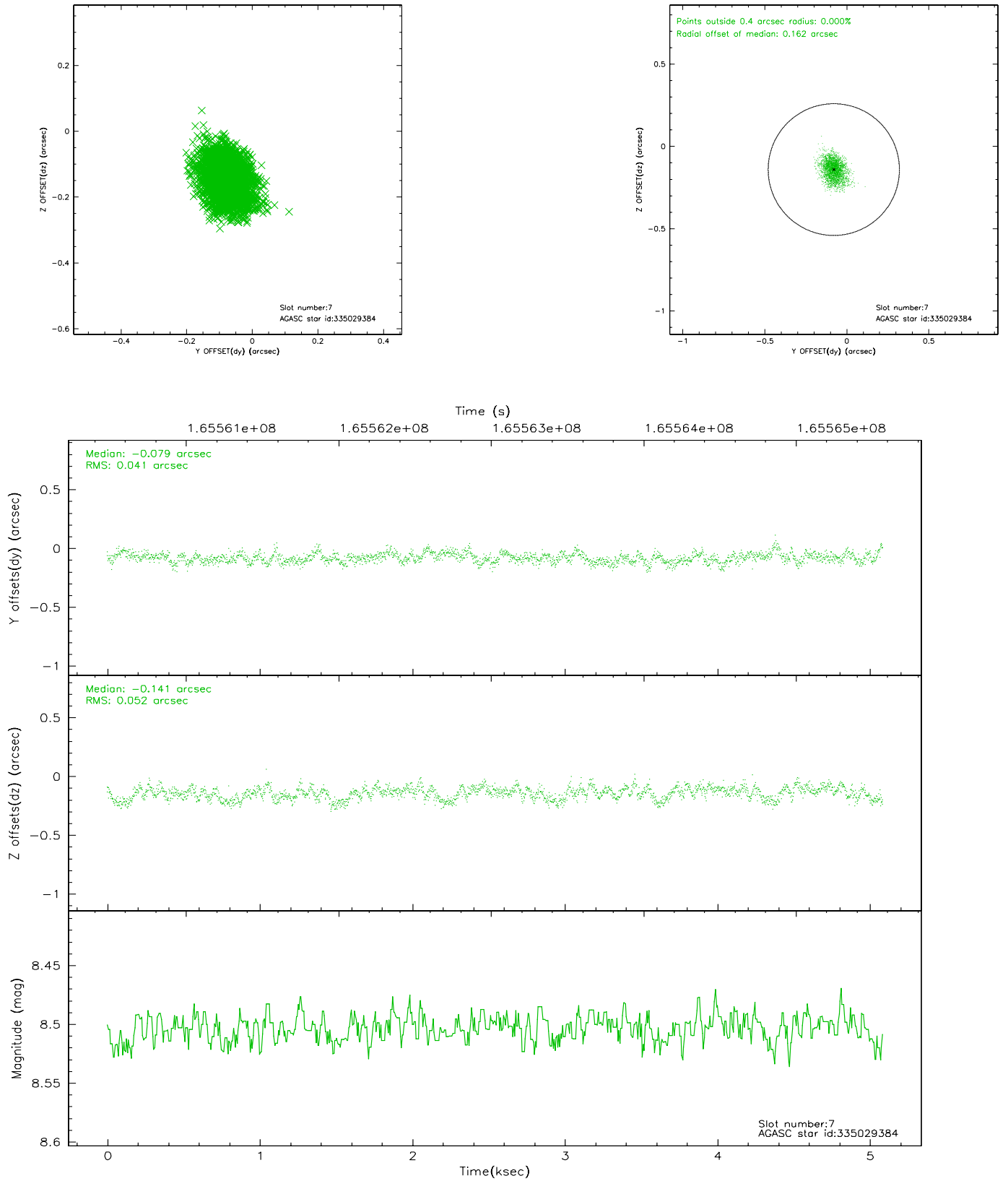
2.4.3 Slot 5



2.4.4 Slot 6

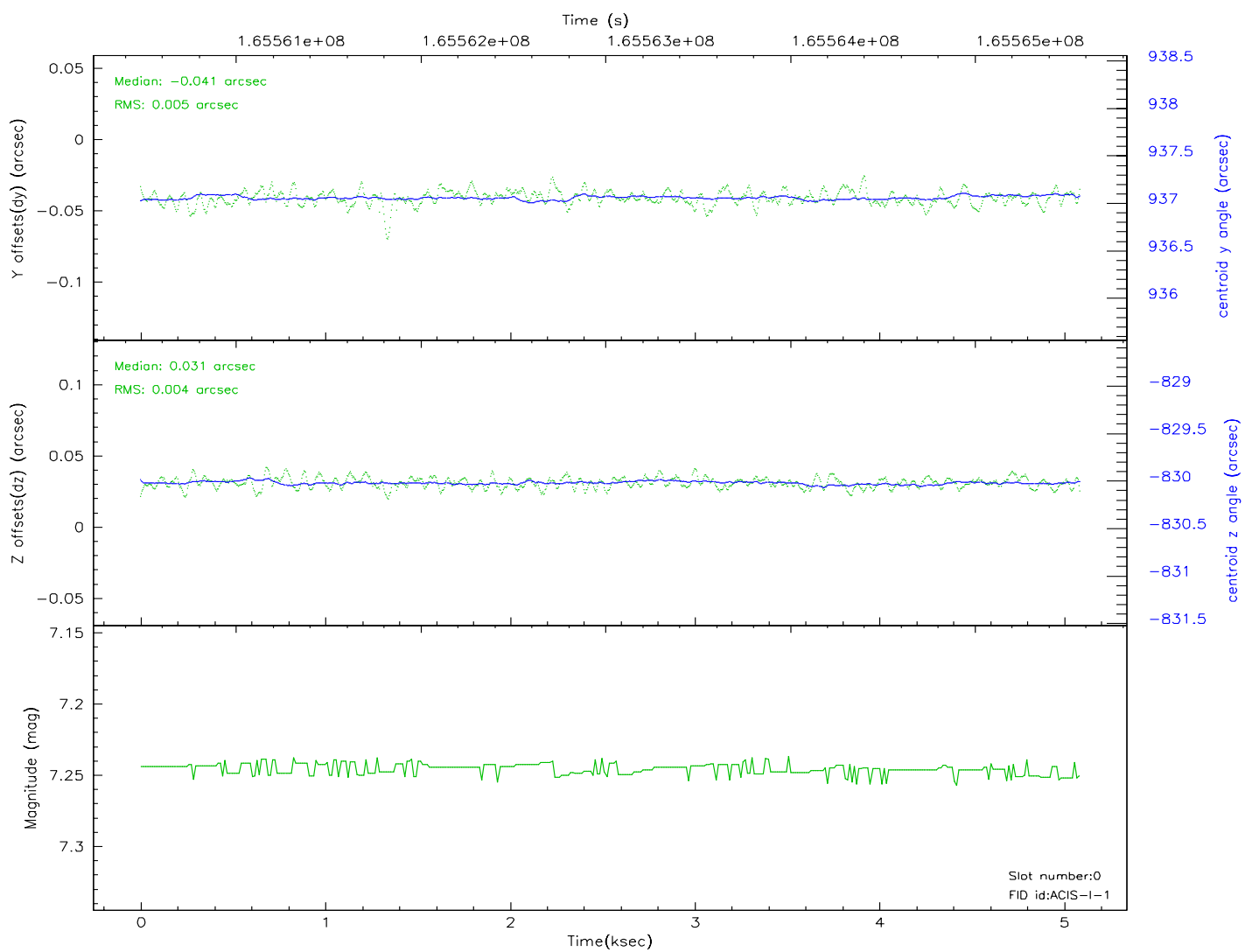
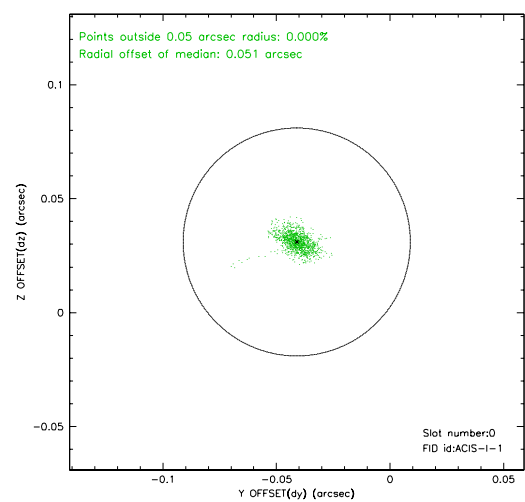
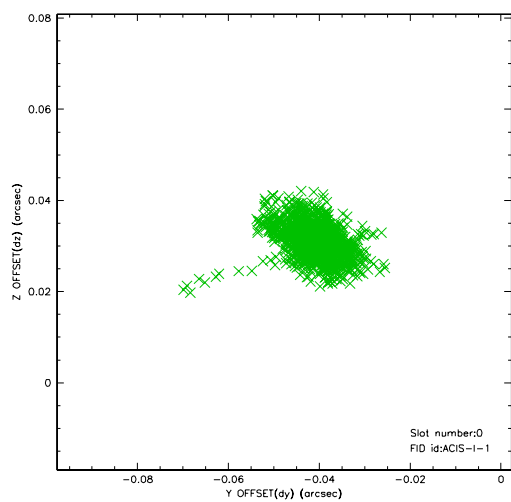


2.4.5 Slot 7

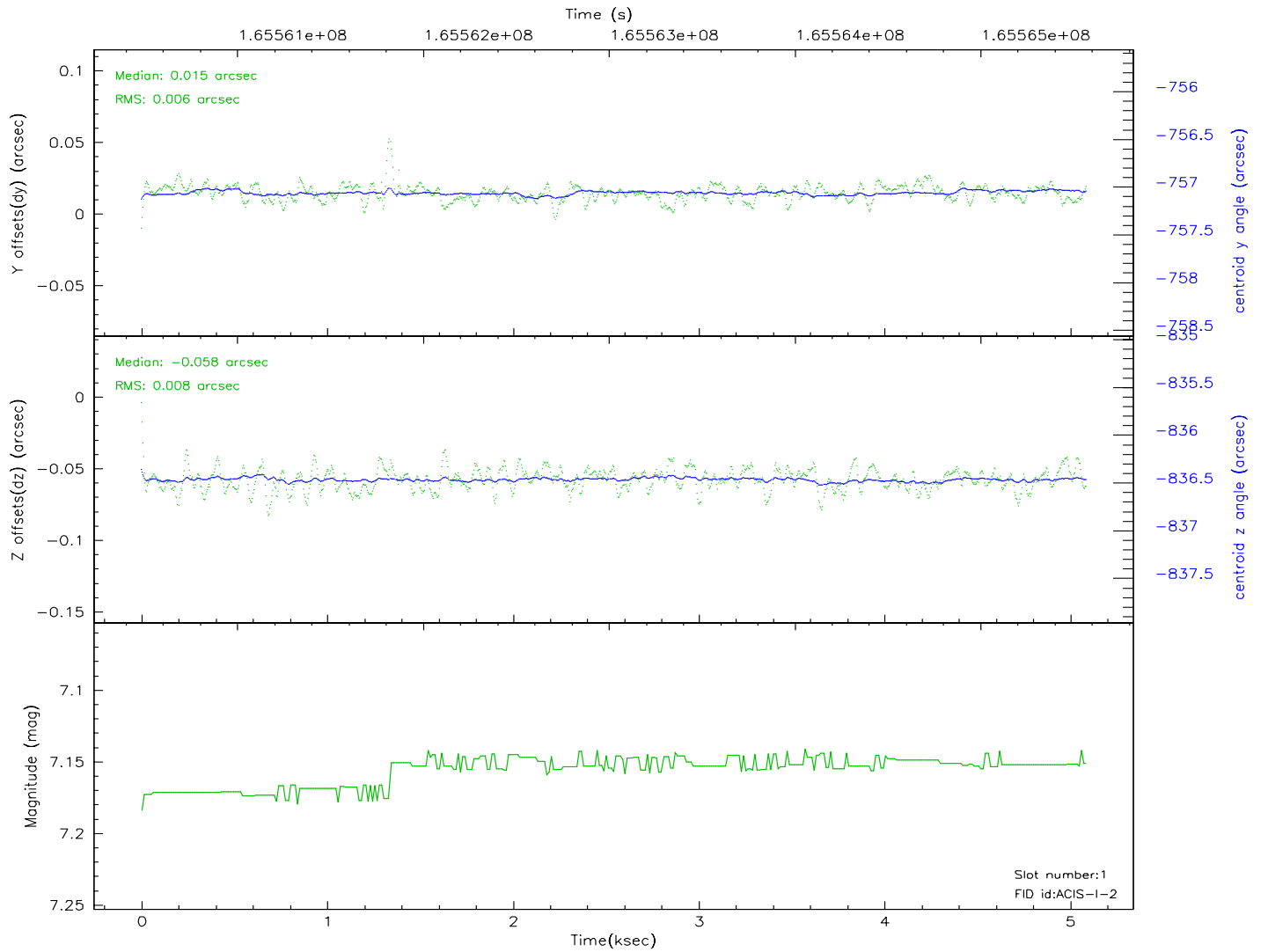
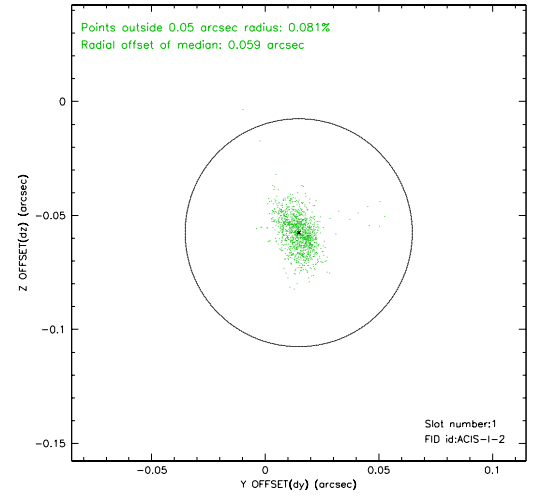
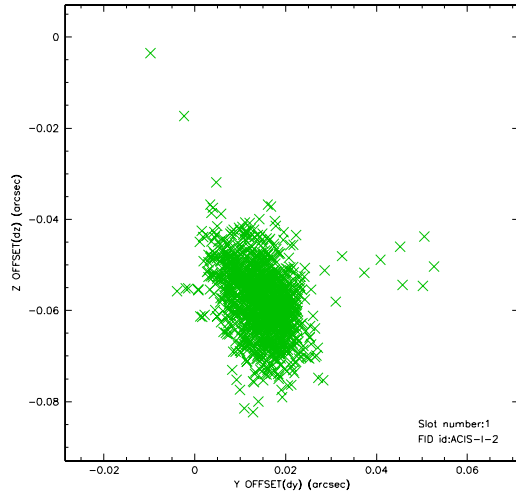


2.5 FID Slots

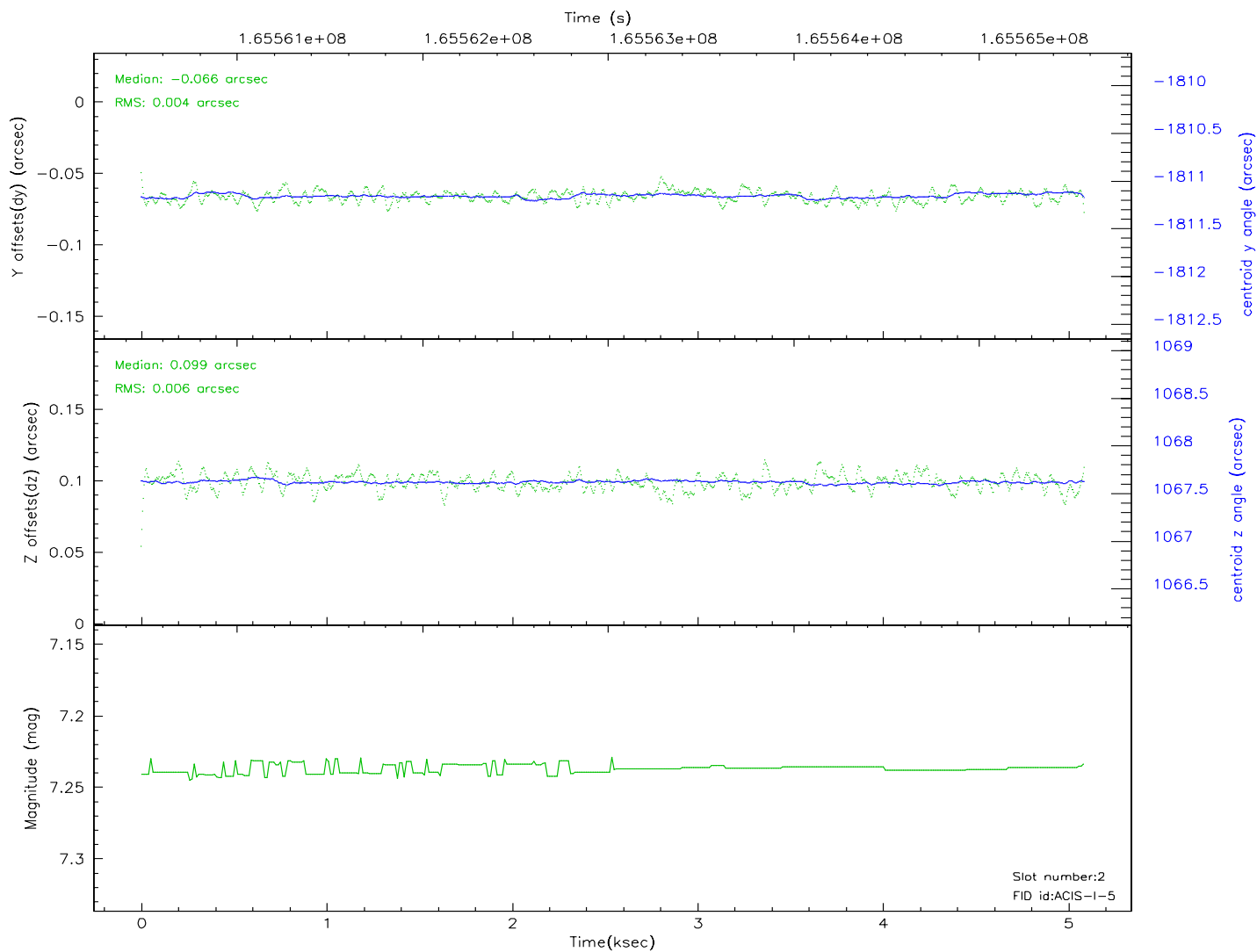
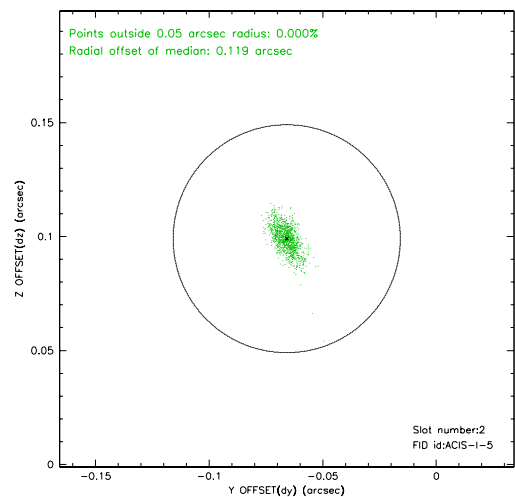
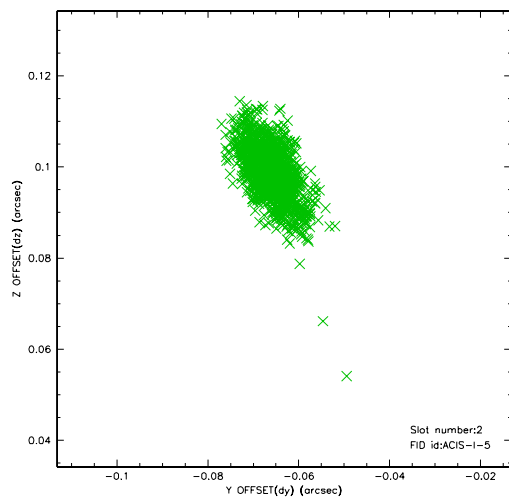
2.5.1 Slot 0



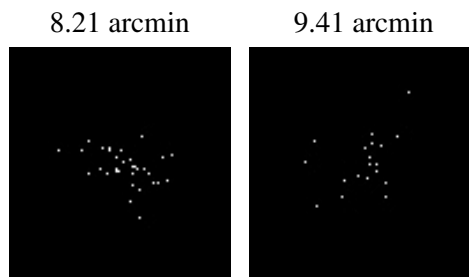
2.5.2 Slot 1



2.5.3 Slot 2



3 Point Sources



A Summary

A.1 Status

V&V Scientist	Jen Lauer
V&V Date (YYYY-MM-DD)	2006.07.30
V&V Edition	1
V&V Disposition and Status	OK
V&V Charge Time	4.674

A.2 Comments