

# V&V Reference Report

## L2 ASCDS Version : 7.6.8

Observation 4236 - L2 Version 001  
Chandra X-Ray Center

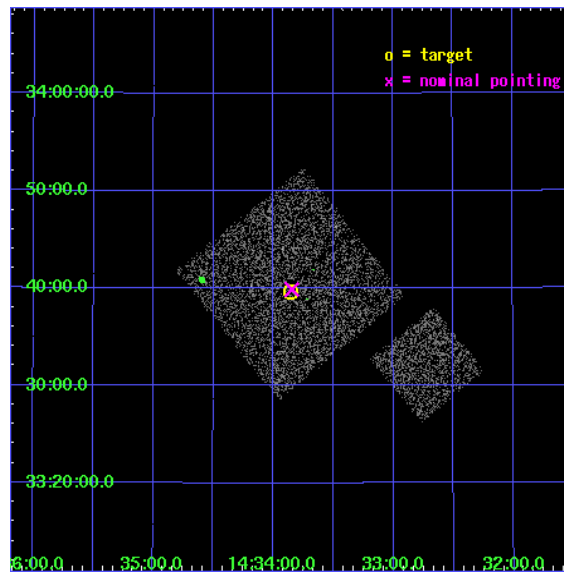
L2 Processing Date : Jul 29 2006

## Contents

<b>1</b>	<b>Front</b>	<b>2</b>
<b>2</b>	<b>OBI</b>	<b>3</b>
2.1	OBI . . . . .	3
2.1.1	Images . . . . .	3
2.1.2	Bias . . . . .	3
2.1.3	Parameters . . . . .	4
2.1.4	Events . . . . .	4
2.2	Compared Parameters . . . . .	5
2.3	Aspect . . . . .	6
2.4	Star Slots . . . . .	9
2.4.1	Slot 3 . . . . .	9
2.4.2	Slot 4 . . . . .	10
2.4.3	Slot 5 . . . . .	11
2.4.4	Slot 6 . . . . .	12
2.4.5	Slot 7 . . . . .	13
2.5	FID Slots . . . . .	14
2.5.1	Slot 0 . . . . .	14
2.5.2	Slot 1 . . . . .	15
2.5.3	Slot 2 . . . . .	16
<b>3</b>	<b>Point Sources</b>	<b>17</b>
<b>A</b>	<b>Summary</b>	<b>18</b>
A.1	Status . . . . .	18
A.2	Comments . . . . .	18

# 1 Front

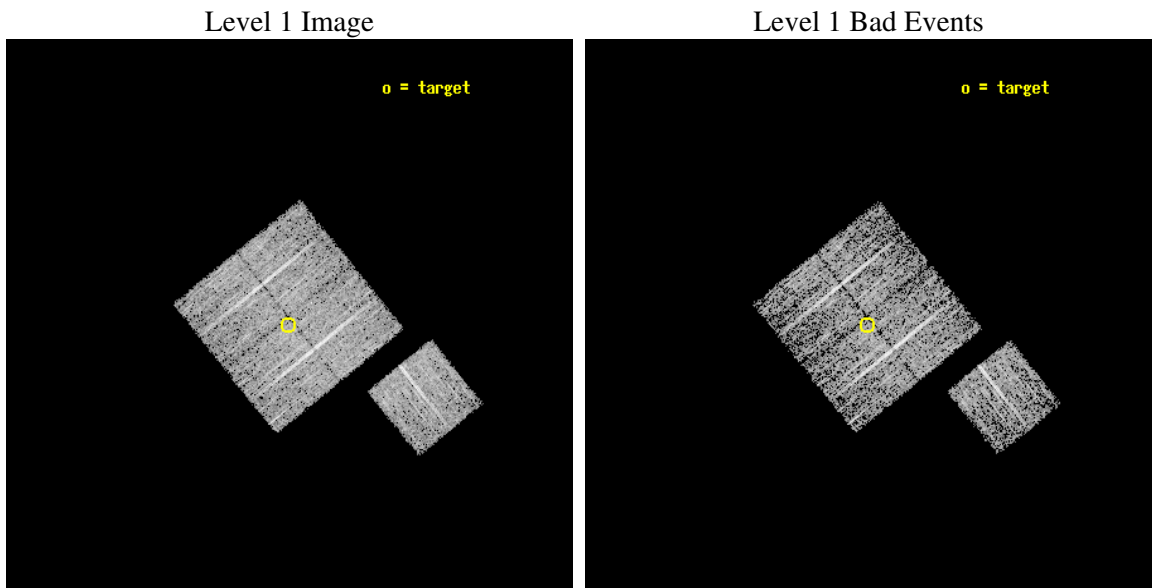
seq_num	900279
obs_id	4236
title	A CHANDRA WIDE-FIELD SURVEY TO MAP THE COSMIC WEB AND INVESTIGATE THE EVOLUTION OF NUCLEAR ACCRETION
observer	Dr. Christine Jones
object	SS15
dtcycle	0
cycle	P
ra_targ	218.463931
dec_targ	33.660612
ra_nom	218.46124295319
dec_nom	33.664680455888
roll_nom	141.01017892788
revision	2
ontime	4674.7999910116
livetime	4613.7202875914
ontime0	4674.7999910116
ontime1	4674.7999910116
ontime2	4674.7999910116
ontime3	4674.7999910116
ontime6	4671.6589908898
l2events	9637



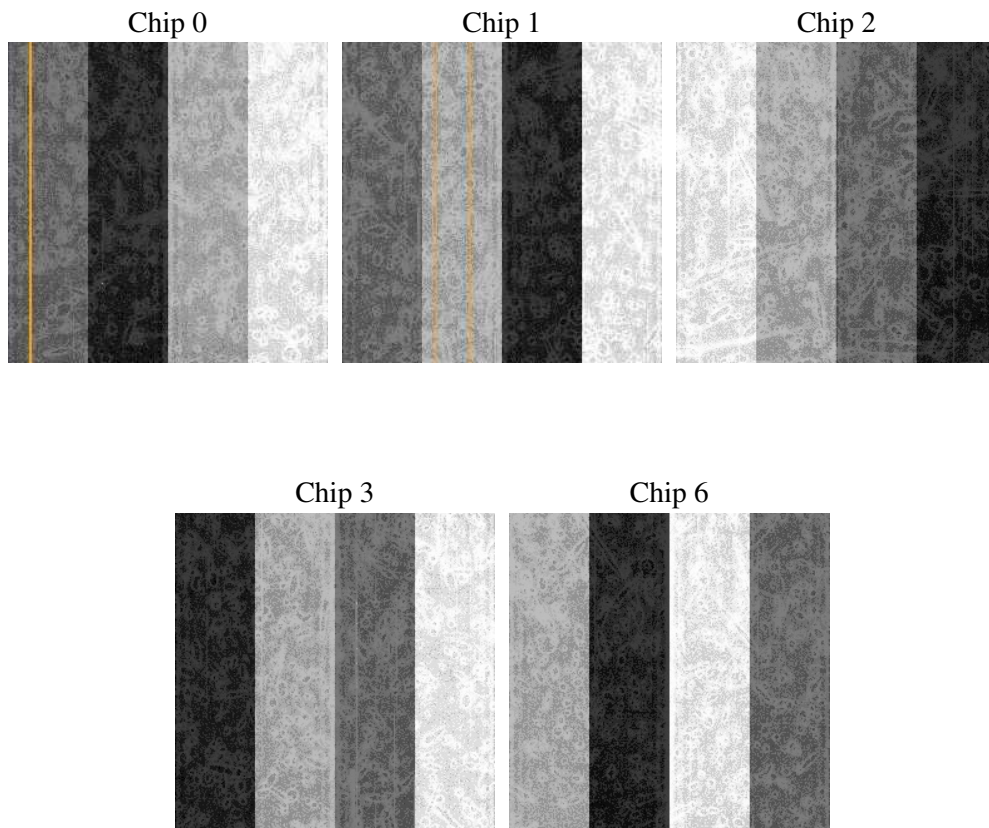
## 2 OBI

### 2.1 OBI

#### 2.1.1 Images



#### 2.1.2 Bias



### 2.1.3 Parameters

obi_num	1
ascdsver	7.6.8
caldsver	3.2.2
date	2006-07-30T02:13:29
revision	2

sched_exp_time	4900.000000
ontime	4680.1017473936
ontime0	4680.1017473936
ontime1	4680.1017673314
ontime2	4680.1017473936
ontime3	4680.1017473936
ontime6	4676.9607672095
l1events	115891

### 2.1.4 Events

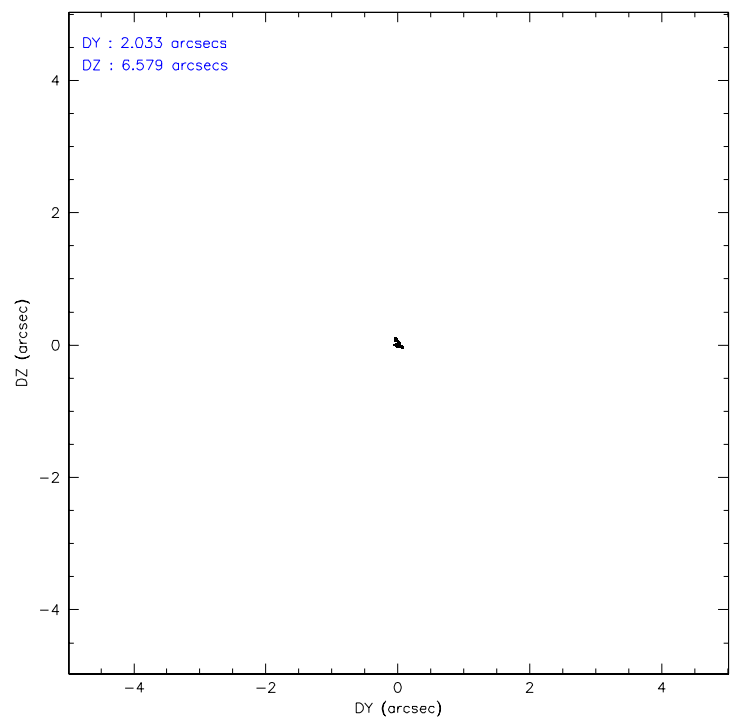
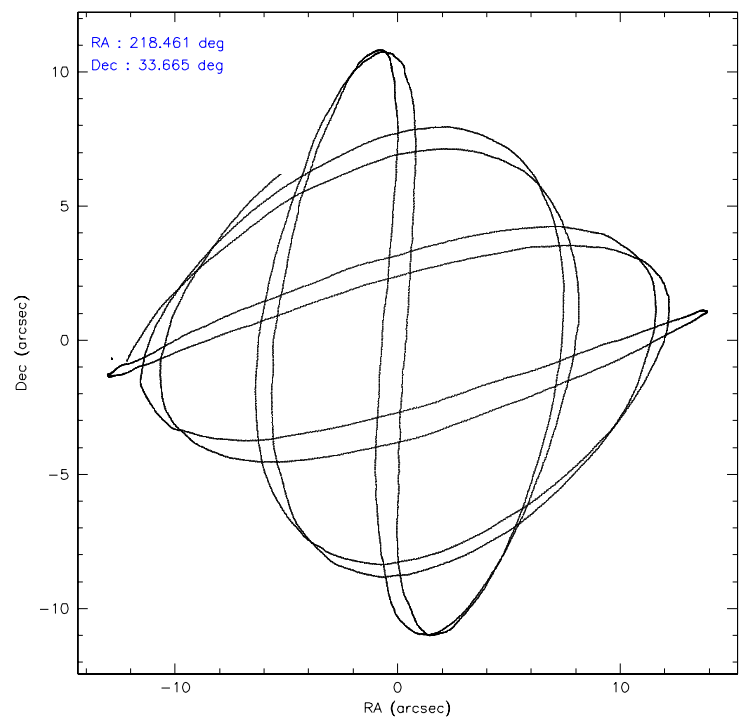
	ccd 0	ccd 1	ccd 2	ccd 3	ccd 6
level 1 events	22296	21743	24719	23715	23418
rejected events	19896	19386	22274	21584	21079
rejected %	89%	89%	90%	91%	90%

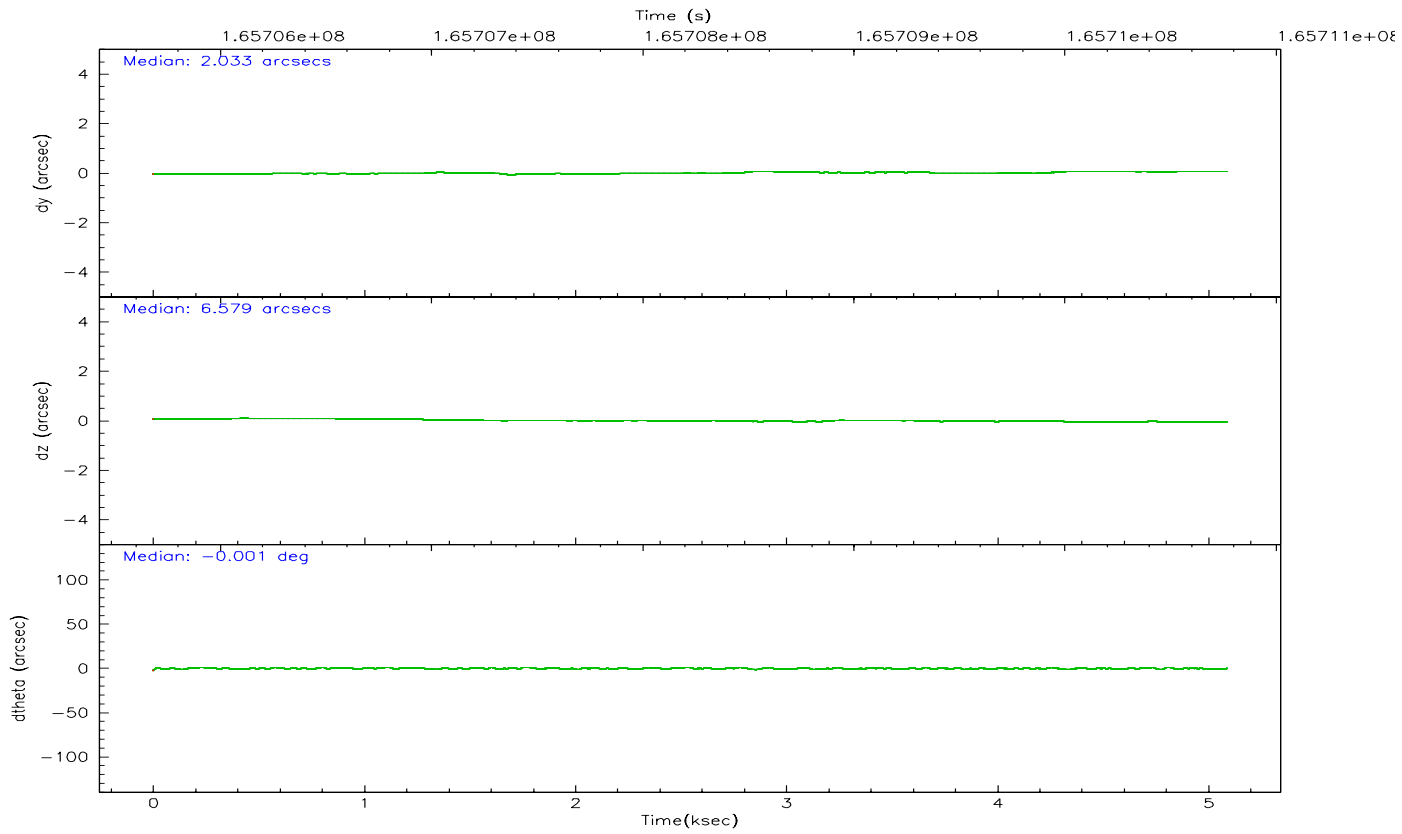
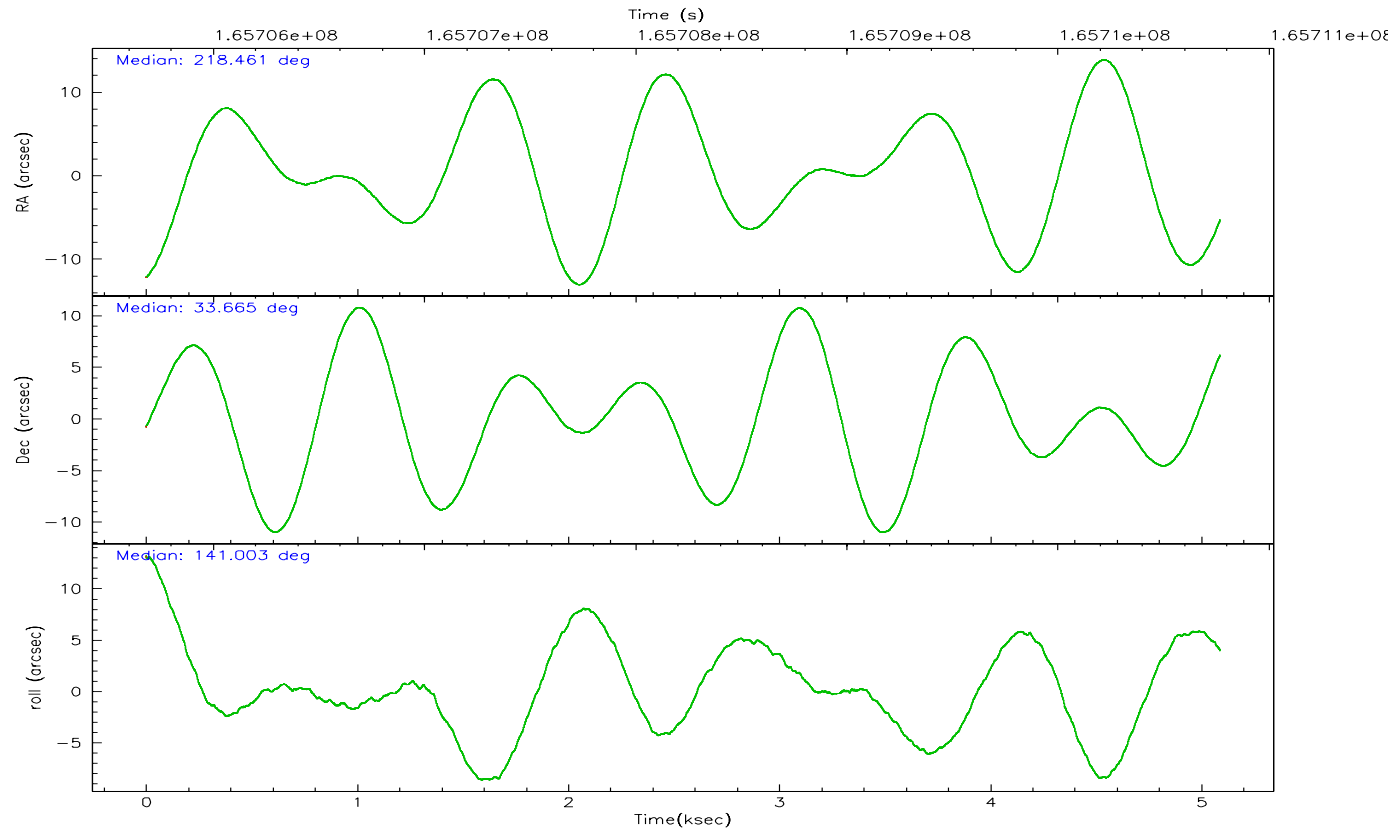
	ccd 0	ccd 1	ccd 2	ccd 3	ccd 6
grade 0 events	872	818	935	853	880
	3%	3%	3%	3%	3%
grade 1 events	12	7	17	10	15
	0%	0%	0%	0%	0%
grade 2 events	498	524	514	409	469
	2%	2%	2%	1%	2%
grade 3 events	295	290	294	275	238
	1%	1%	1%	1%	1%
grade 4 events	293	274	283	247	269
	1%	1%	1%	1%	1%
grade 5 events	692	741	669	755	765
	3%	3%	2%	3%	3%
grade 6 events	443	451	420	348	483
	1%	2%	1%	1%	2%
grade 7 events	19191	18638	21587	20818	20299
	86%	85%	87%	87%	86%

## 2.2 Compared Parameters

Parameter	Planned	Actual	Parameter	Planned	Actual
Instrument	ACIS	ACIS	Obspar format version number	6	6
Detector	ACIS-01236	ACIS-01236	Obspar file type	PREDICTED	ACTUAL
Grating	NONE	NONE	Obspar update status	NONE	UPDATED
Data mode	VFAINT	VFAINT	On-chip summing requested	N	N
Observation mode	POINTING	POINTING	Subarray requested	NONE	NONE
Pointing RA	218.493828	218.4612429531945	Alternating exposures requested	N	N
Pointing Dec	33.660530	33.66468045588803	Primary exposure time	0.000000	3.1
Pointing Roll	140.783426	141.0101789278789			
SIM focus pos (mm)	-0.782348	-0.7809083437167272			
SIM defocus (mm)	0	0.001439871863259334			
SIM translation stage pos (mm)	-233.592463	-233.5874344608287			
SIM translation stage offset (mm)	0	-0.005018542100998502			
Observation start time	165705867.184000	165705491.33822			
Observation start date	2003-04-02T21:23:23	2003-04-02T21:18:11			
Observation end time	165710767.184000	165710901.28845			
Observation end date	2003-04-02T22:45:03	2003-04-02T22:48:21			
Read mode	TIMED	TIMED			

## 2.3 Aspect



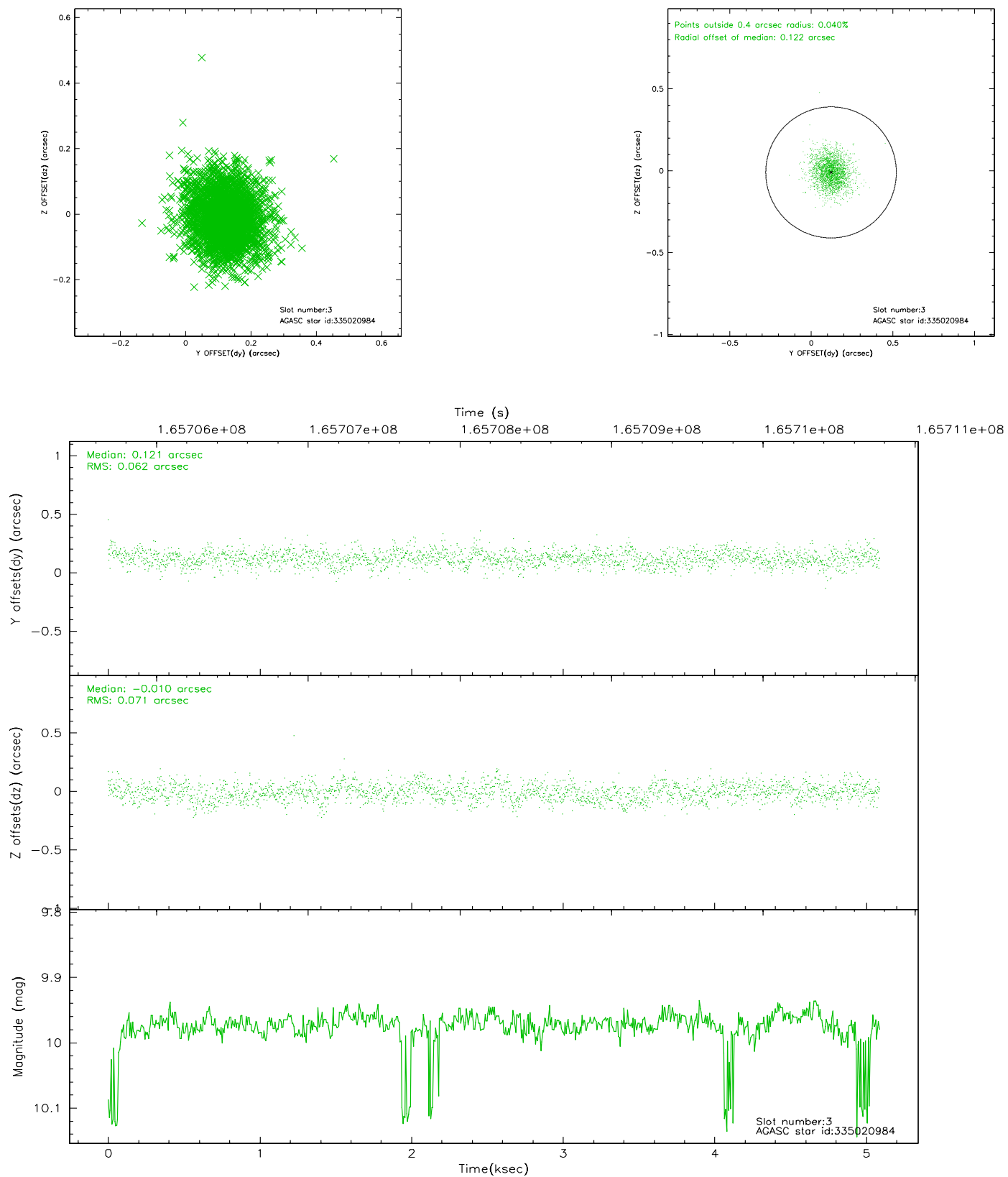


### Slot Statistics

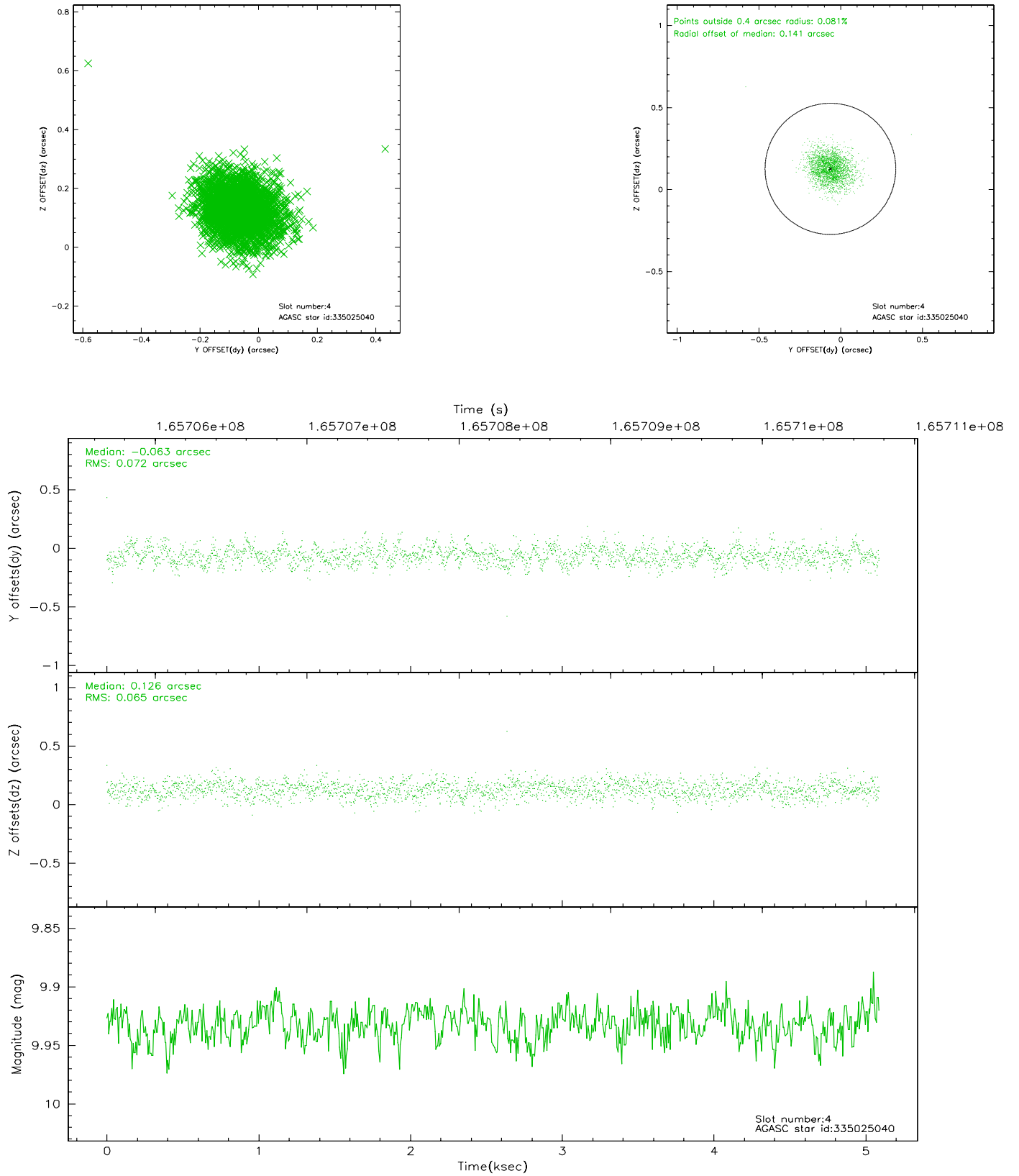
slot	status	id	mag	n_pts	med_dy	med_dz	dr1	dr2	ra	dec	mean_y	mean_z
0	FID	ACIS-I-1	7.25	1242	-0.017	0.031	0.006	0.011	0.000000	0.000000	937.74	-829.96
1	FID	ACIS-I-5	7.24	1242	-0.036	0.040	0.006	0.010	0.000000	0.000000	-1809.68	1067.00
2	FID	ACIS-I-6	7.26	1242	-0.038	-0.002	0.006	0.011	0.000000	0.000000	402.03	1712.77
3	GUIDE	335020984	9.97	2475	0.121	-0.010	0.100	0.165	218.841668	33.815112	-452.31	-1090.35
4	GUIDE	335025040	9.93	2483	-0.063	0.126	0.102	0.165	218.601670	34.305240	1219.17	-2001.13
5	GUIDE	335027640	9.12	2482	0.016	-0.148	0.090	0.145	218.092211	33.193770	-123.21	2064.19
6	GUIDE	335152784	7.23	2484	-0.036	0.008	0.058	0.093	219.280617	33.678221	-1780.18	-1545.79
7	GUIDE	335157088	9.10	2471	-0.031	0.026	0.114	0.166	219.274029	33.726909	-1653.76	-1669.58

## 2.4 Star Slots

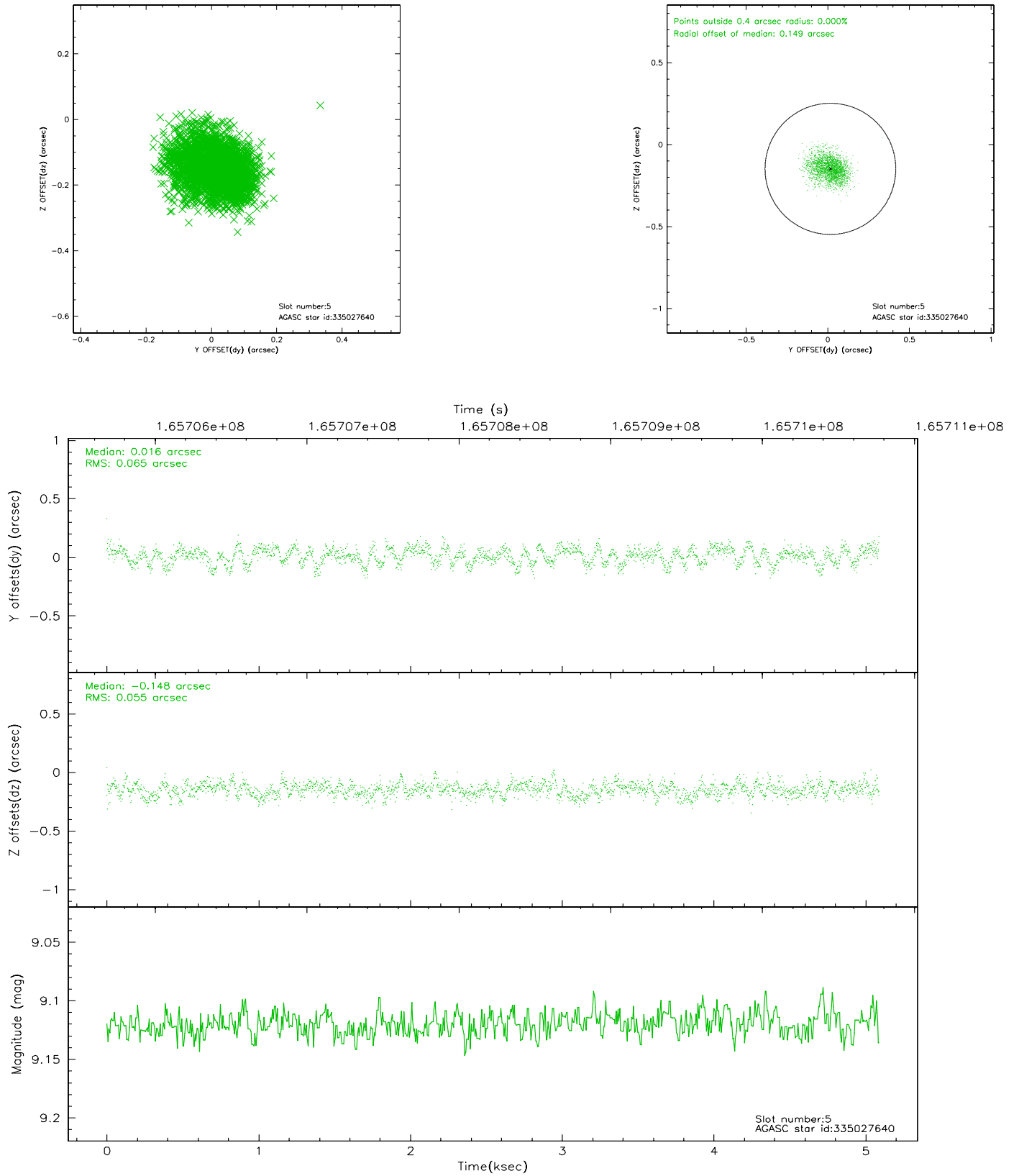
### 2.4.1 Slot 3



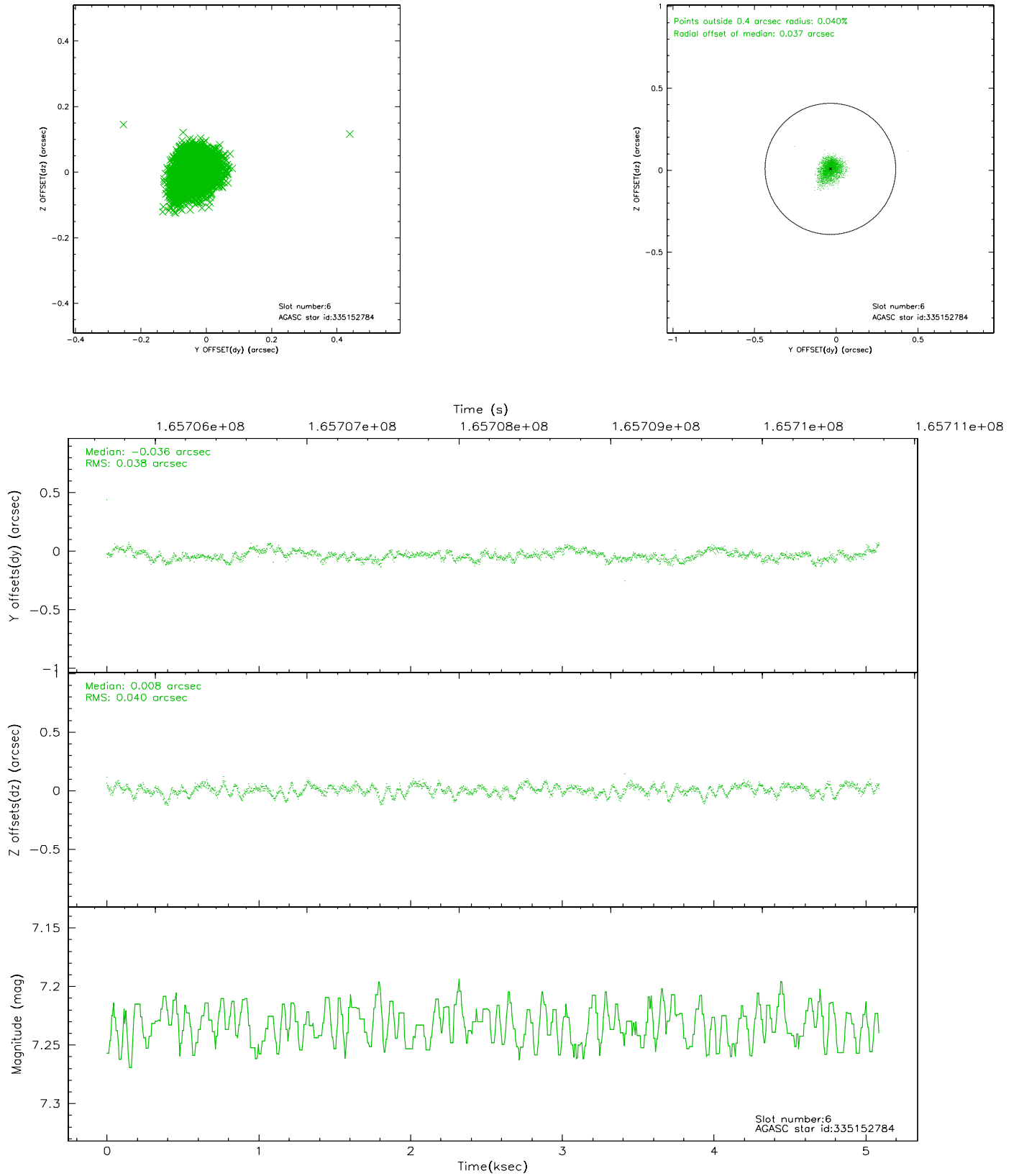
## 2.4.2 Slot 4



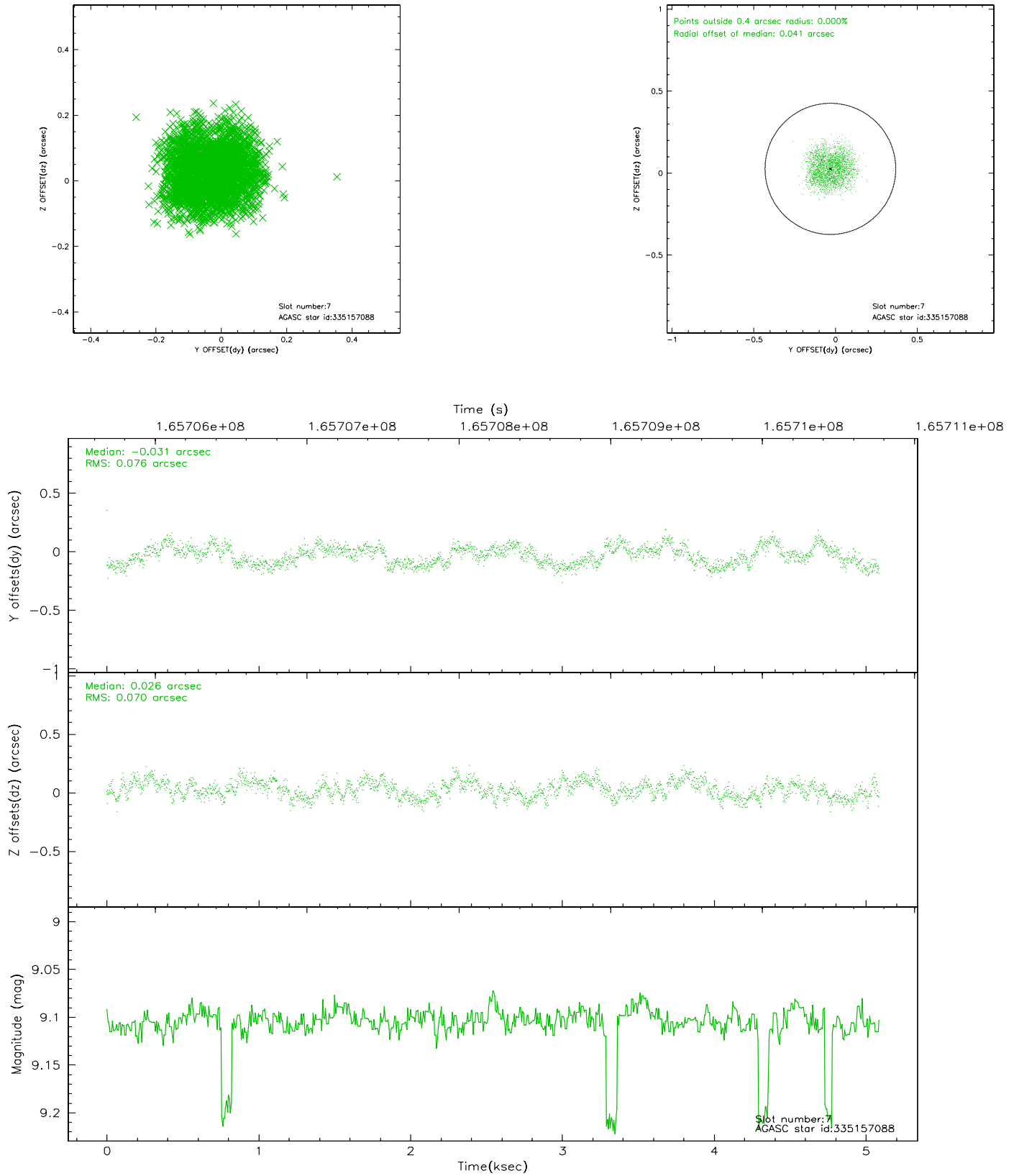
### 2.4.3 Slot 5



## 2.4.4 Slot 6

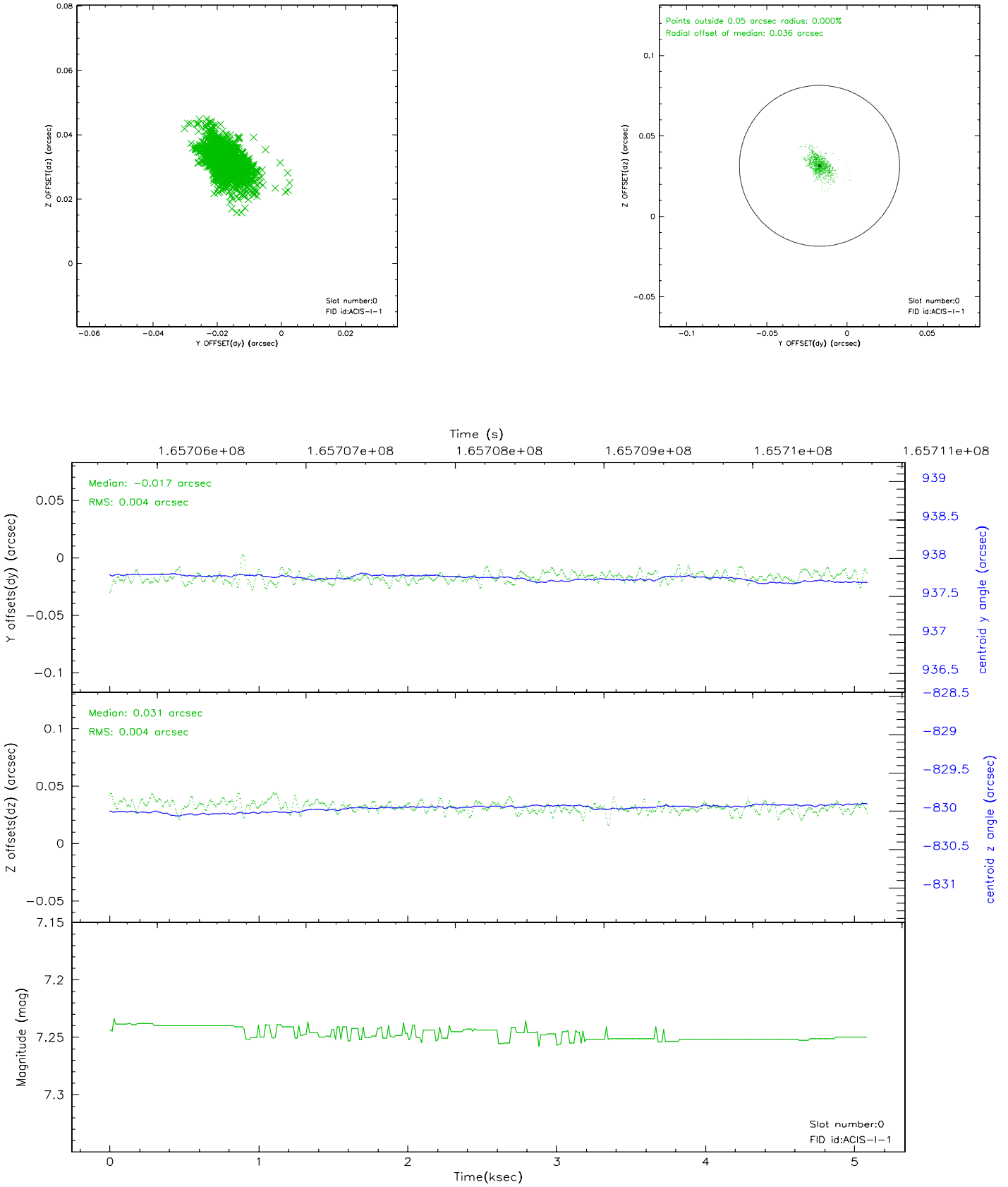


## 2.4.5 Slot 7

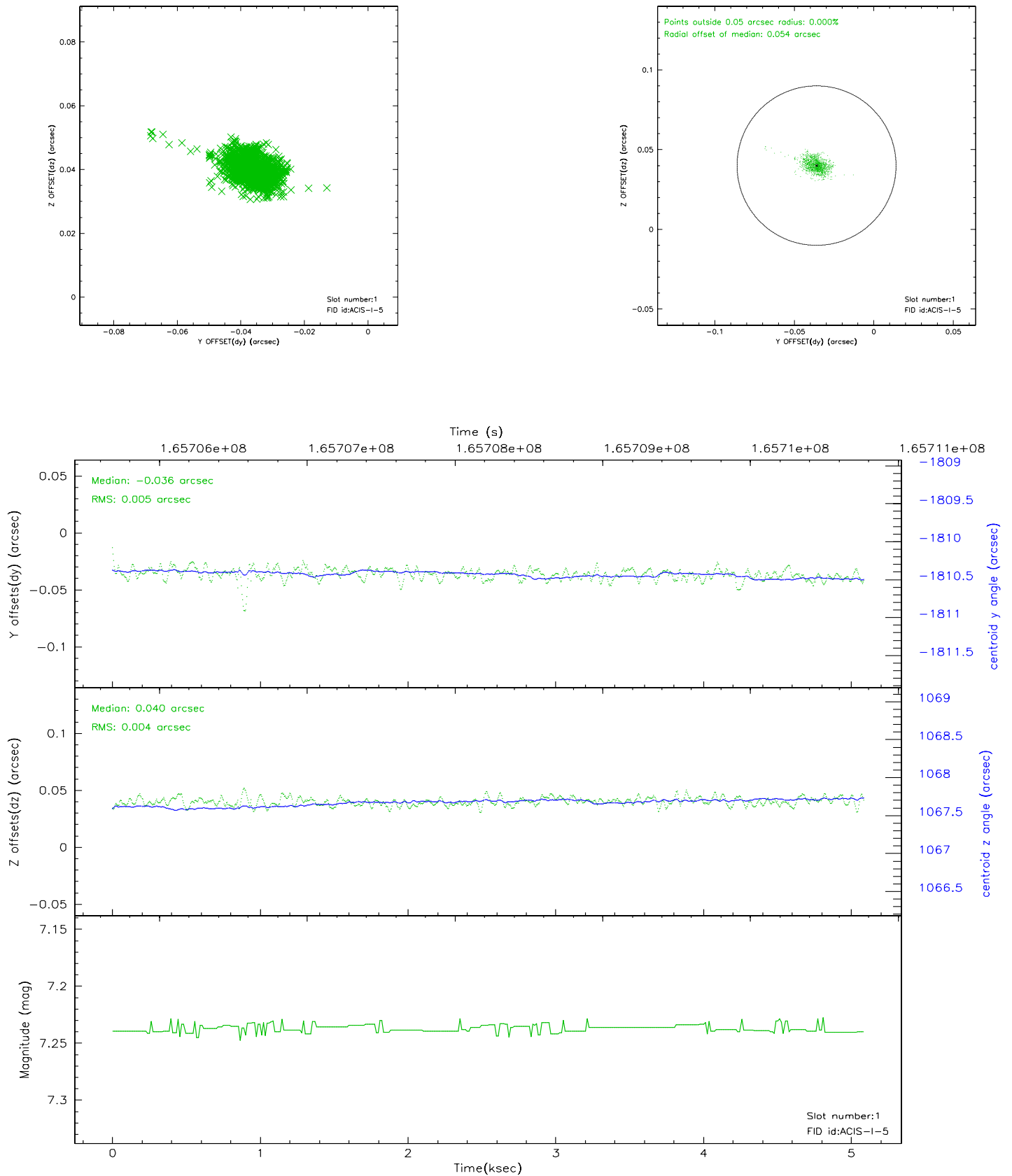


## 2.5 FID Slots

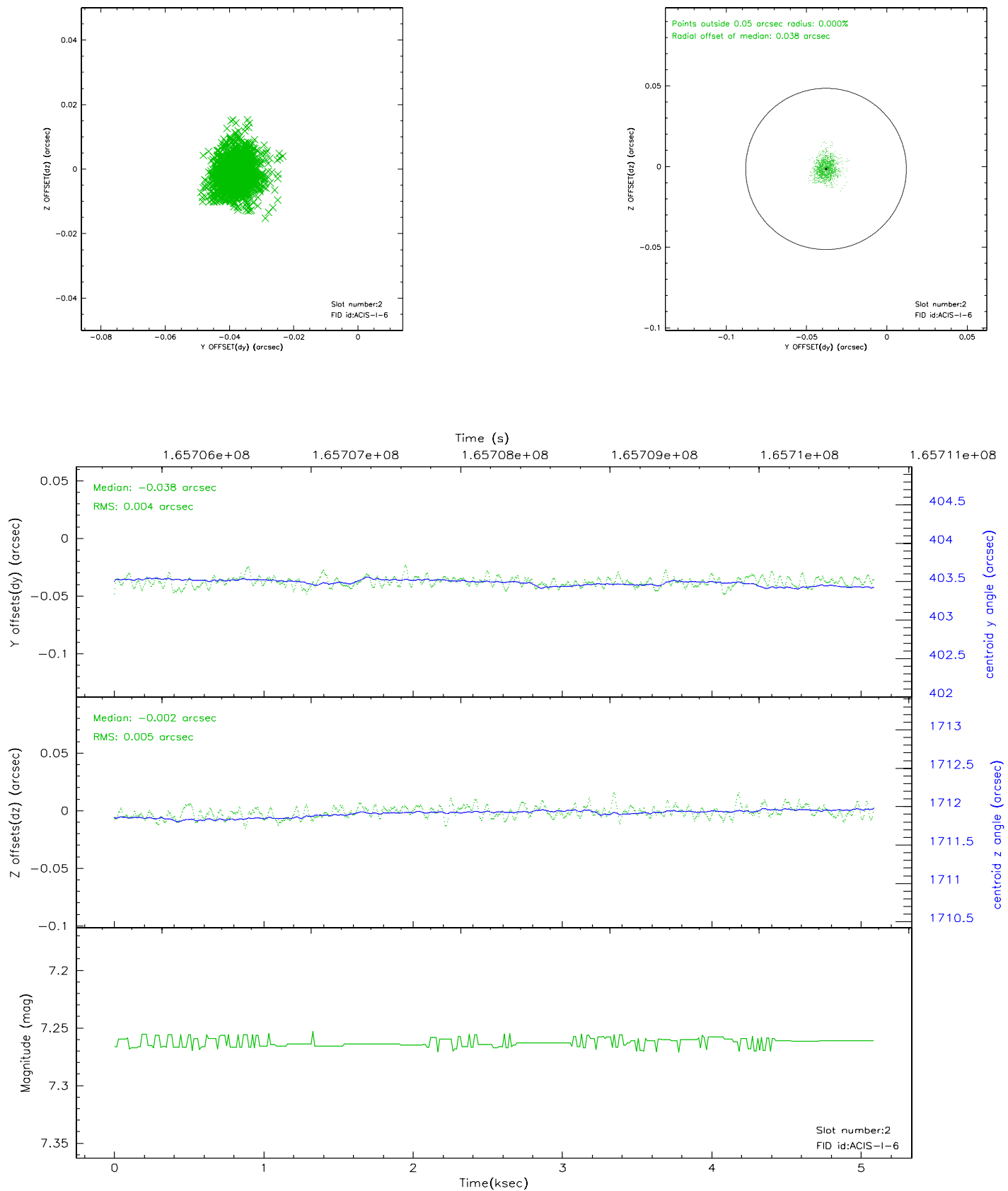
### 2.5.1 Slot 0



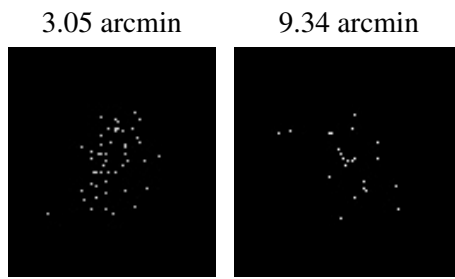
## 2.5.2 Slot 1



### 2.5.3 Slot 2



### 3 Point Sources



## A Summary

### A.1 Status

V&V Scientist	Jen Lauer
V&V Date (YYYY-MM-DD)	2006.07.30
V&V Edition	1
V&V Disposition and Status	OK
V&V Charge Time	4.674

### A.2 Comments