

# V&V Reference Report

## L2 ASCDS Version : 8.4.5

Observation 4230 - L2 Version 3  
Chandra X-Ray Center

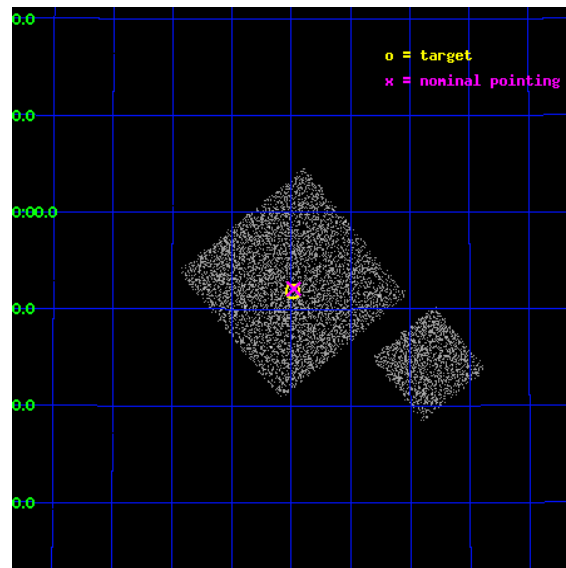
L2 Processing Date : Oct 25 2012

## Contents

<b>1</b>	<b>Front</b>	<b>2</b>
<b>2</b>	<b>OBI</b>	<b>3</b>
2.1	OBI . . . . .	3
2.1.1	Images . . . . .	3
2.1.2	Bias . . . . .	3
2.1.3	Parameters . . . . .	4
2.1.4	Events . . . . .	4
2.2	Compared Parameters . . . . .	5
2.3	Aspect . . . . .	6
2.4	Star Slots . . . . .	9
2.4.1	Slot 3 . . . . .	9
2.4.2	Slot 4 . . . . .	10
2.4.3	Slot 5 . . . . .	11
2.4.4	Slot 6 . . . . .	12
2.4.5	Slot 7 . . . . .	13
2.5	FID Slots . . . . .	14
2.5.1	Slot 0 . . . . .	14
2.5.2	Slot 1 . . . . .	15
2.5.3	Slot 2 . . . . .	16
<b>A</b>	<b>Summary</b>	<b>17</b>
A.1	Status . . . . .	17
A.2	Comments . . . . .	17

# 1 Front

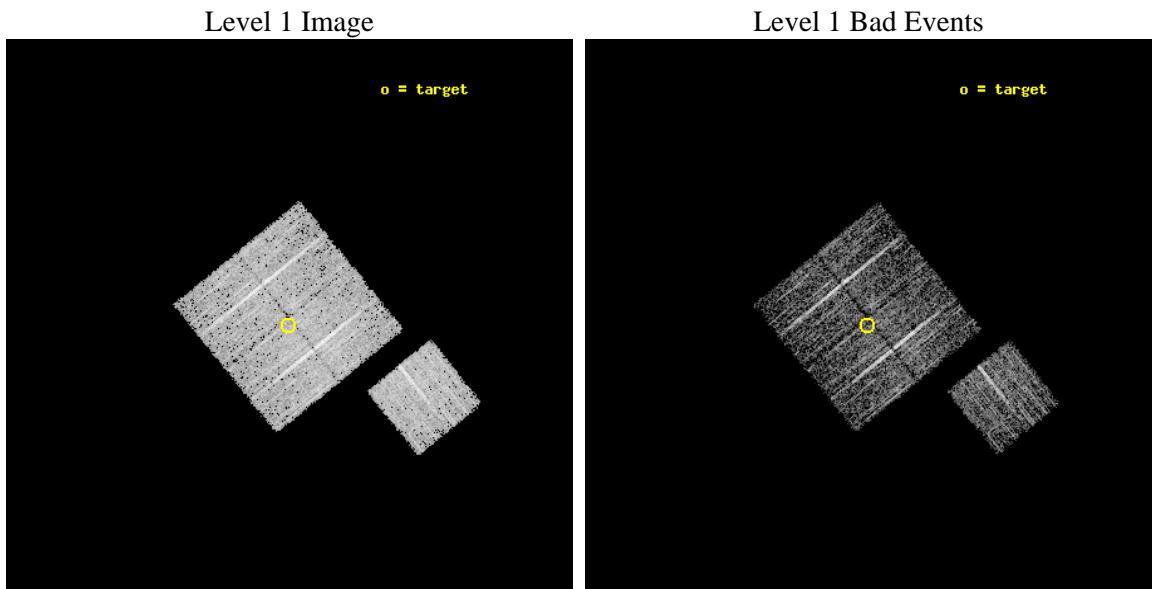
seq_num	900273	Sequence number
obs_id	4230	Observation id
title	A CHANDRA WIDE-FIELD SURVEY TO MAP THE COSMIC WEB AND INVESTIGATE THE EVOLUTION OF NUCLEAR ACCRETION	Proposal title
observer	Dr. Christine Jones	Principal investigator
object	SS25	Source name
dtcycle	0	&#160
cycle	P	events from which exps? Prim/Second/Both
ra_targ	218.246914	Observer's specified target RA [deg]
dec_targ	33.864306	Observer's specified target Dec [deg]
ra_nom	218.24438648535	Nominal RA [deg]
dec_nom	33.868378199352	Nominal Dec [deg]
roll_nom	141.01008180912	Nominal Roll [deg]
revision	3	Processing version of data
ontime	4776.5739220977	Sum of GTIs [s]
livetime	4714.1644673429	Livetime [s]
ontime0	4776.4508219957	Sum of GTIs [s]
ontime1	4776.4918420911	Sum of GTIs [s]
ontime2	4776.5328820944	Sum of GTIs [s]
ontime3	4776.5739220977	Sum of GTIs [s]
ontime6	4776.4097620845	Sum of GTIs [s]
l2events	9545	Number of level 2 events



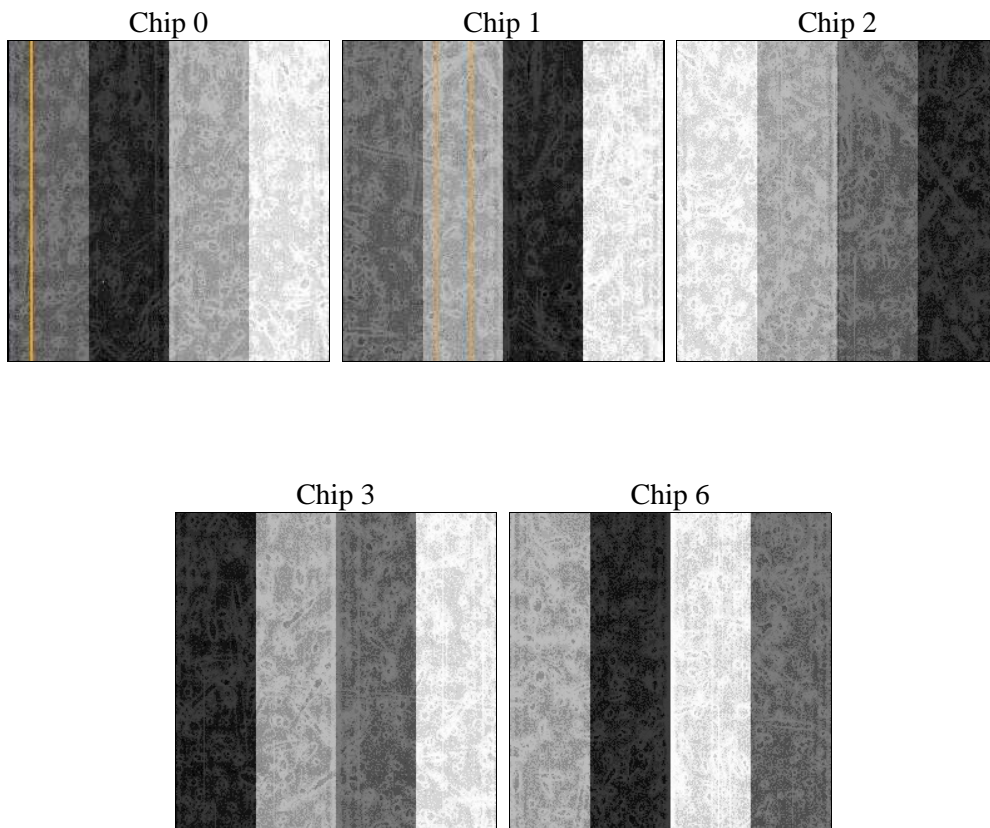
## 2 OBI

### 2.1 OBI

#### 2.1.1 Images



#### 2.1.2 Bias



### 2.1.3 Parameters

obi_num	1	Obi number	sched_exp_time	5000.000000	[s] Scheduled observation exposure time
ascdsver	8.4.5	Processing system revision	ontime	4776.5739220977	Sum of GTIs [s]
caldsver	4.5.2	&#160	ontime0	4776.4508219957	Sum of GTIs [s]
date	2012-10-25T23:00:17	Date and time of file creation	ontime1	4776.4918420911	Sum of GTIs [s]
revision	3	Processing version of data	ontime2	4776.5328820944	Sum of GTIs [s]
			ontime3	4776.5739220977	Sum of GTIs [s]
			ontime6	4776.4097620845	Sum of GTIs [s]
			l1events	118936	Number of level 1 events

### 2.1.4 Events

	ccd 0	ccd 1	ccd 2	ccd 3	ccd 6
level 1 events	22142	22401	24936	23669	25788
rejected events	19838	19841	22708	21471	23423
rejected %	89%	88%	91%	90%	90%

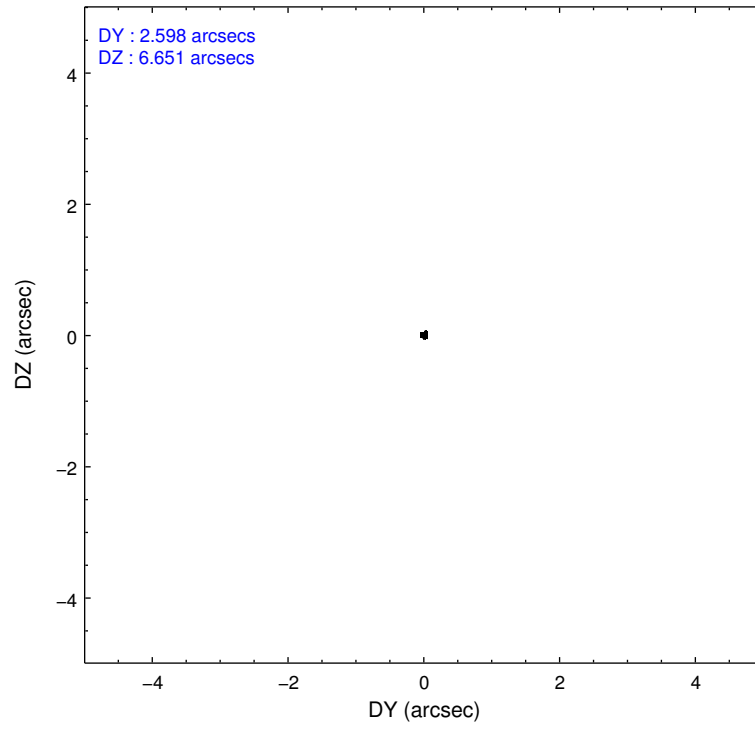
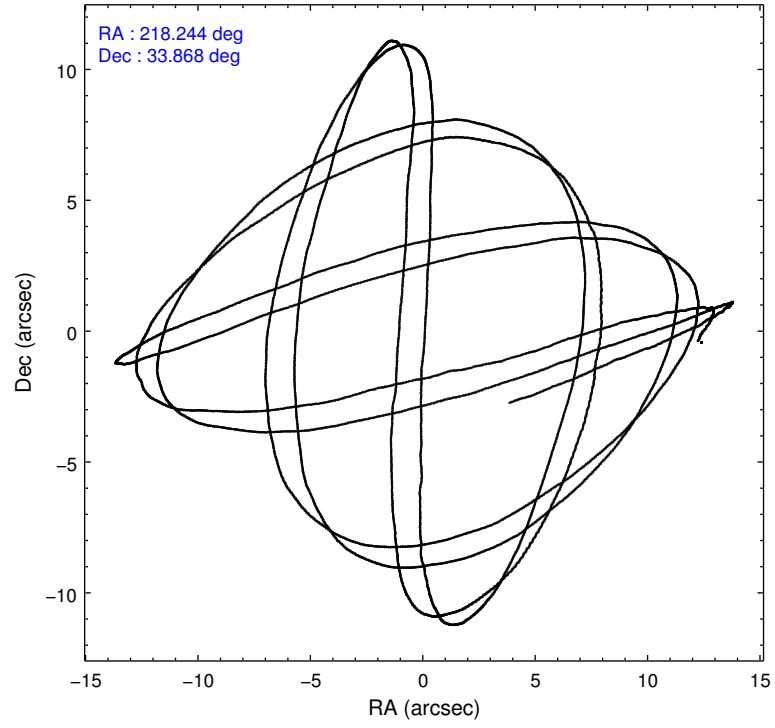
	ccd 0	ccd 1	ccd 2	ccd 3	ccd 6
grade 0 events	900	979	846	817	830
	4%	4%	3%	3%	3%
grade 1 events	7	6	6	15	6
	0%	0%	0%	0%	0%
grade 2 events	533	529	531	462	517
	2%	2%	2%	1%	2%
grade 3 events	253	287	231	263	276
	1%	1%	0%	1%	1%
grade 4 events	242	286	251	258	287
	1%	1%	1%	1%	1%
grade 5 events	680	716	642	800	787
	3%	3%	2%	3%	3%
grade 6 events	376	481	370	398	457
	1%	2%	1%	1%	1%
grade 7 events	19151	19117	22059	20656	22628
	86%	85%	88%	87%	87%

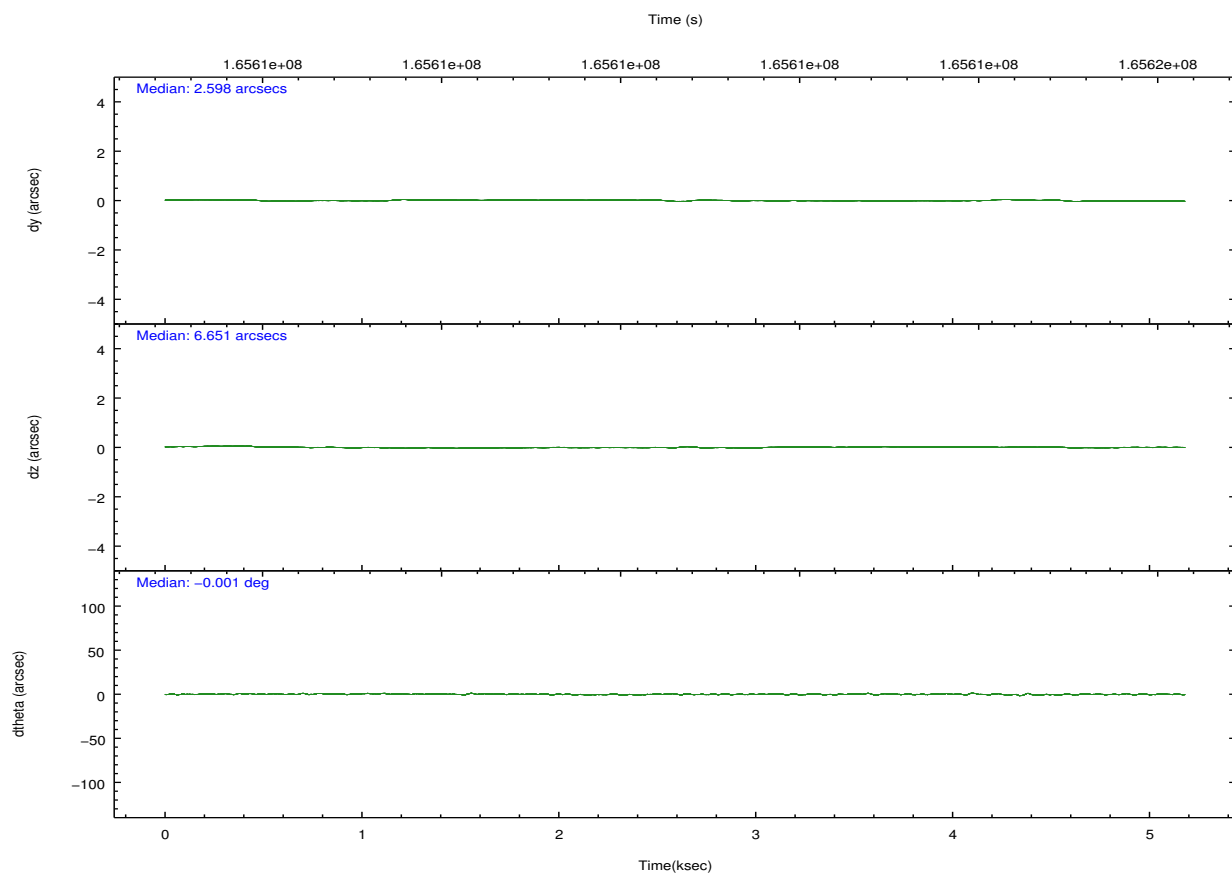
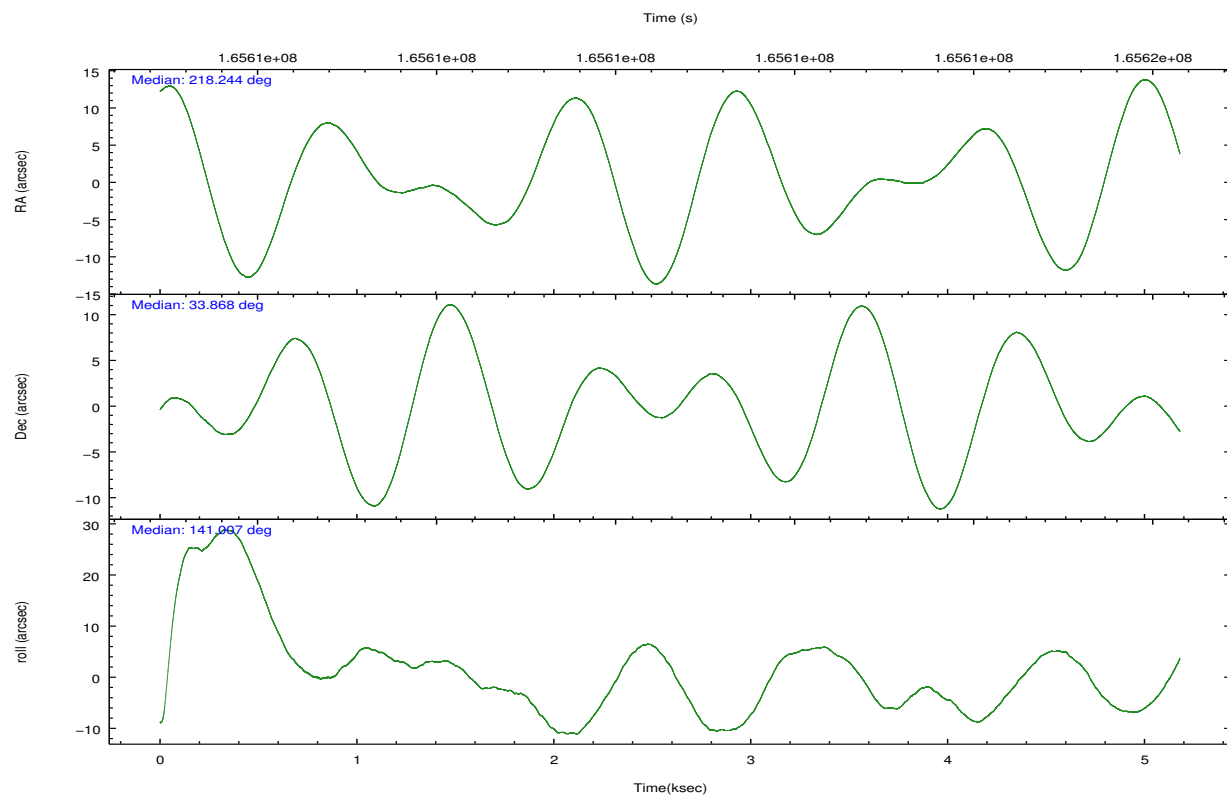


## 2.2 Compared Parameters

Parameter	Planned	Actual	Parameter	Planned	Actual
Instrument	ACIS	ACIS	Obspar format version number	7	7
Detector	ACIS-01236	ACIS-01236	Obspar file type	PREDICTED	ACTUAL
Grating	NONE	NONE	Obspar update status	NONE	UPDATED
Data mode	VFAINT	VFAINT	Number of optional ACIS chips dropped	0	0
Observation mode	POINTING	POINTING	On-chip summing requested	N	N
[deg] Pointing RA	218.276883	218.2443864853472	Subarray requested	NONE	NONE
[deg] Pointing Dec	33.864220	33.86837819935175	Alternating exposures requested	N	N
[deg] Pointing Roll	140.783299	141.0100818091192	[s] Primary exposure time	0.000000	3.1
[mm] SIM focus pos	-0.782348	-0.7809083437167272			
[mm] SIM defocus	0	0.001439871863259334			
[mm] SIM translation stage pos	-233.592463	-233.5874344608287			
[mm] SIM translation stage offset	0	-0.005018542100998502			
[s] Observation start time (MET)	165609893.184000	165609516.48417			
Observation start date	2003-04-01T18:43:49	2003-04-01T18:38:36			
[s] Observation end time (MET)	165614893.184000	165615026.8844			
Observation end date	2003-04-01T20:07:09	2003-04-01T20:10:26			
Read mode	TIMED	TIMED			

## 2.3 Aspect



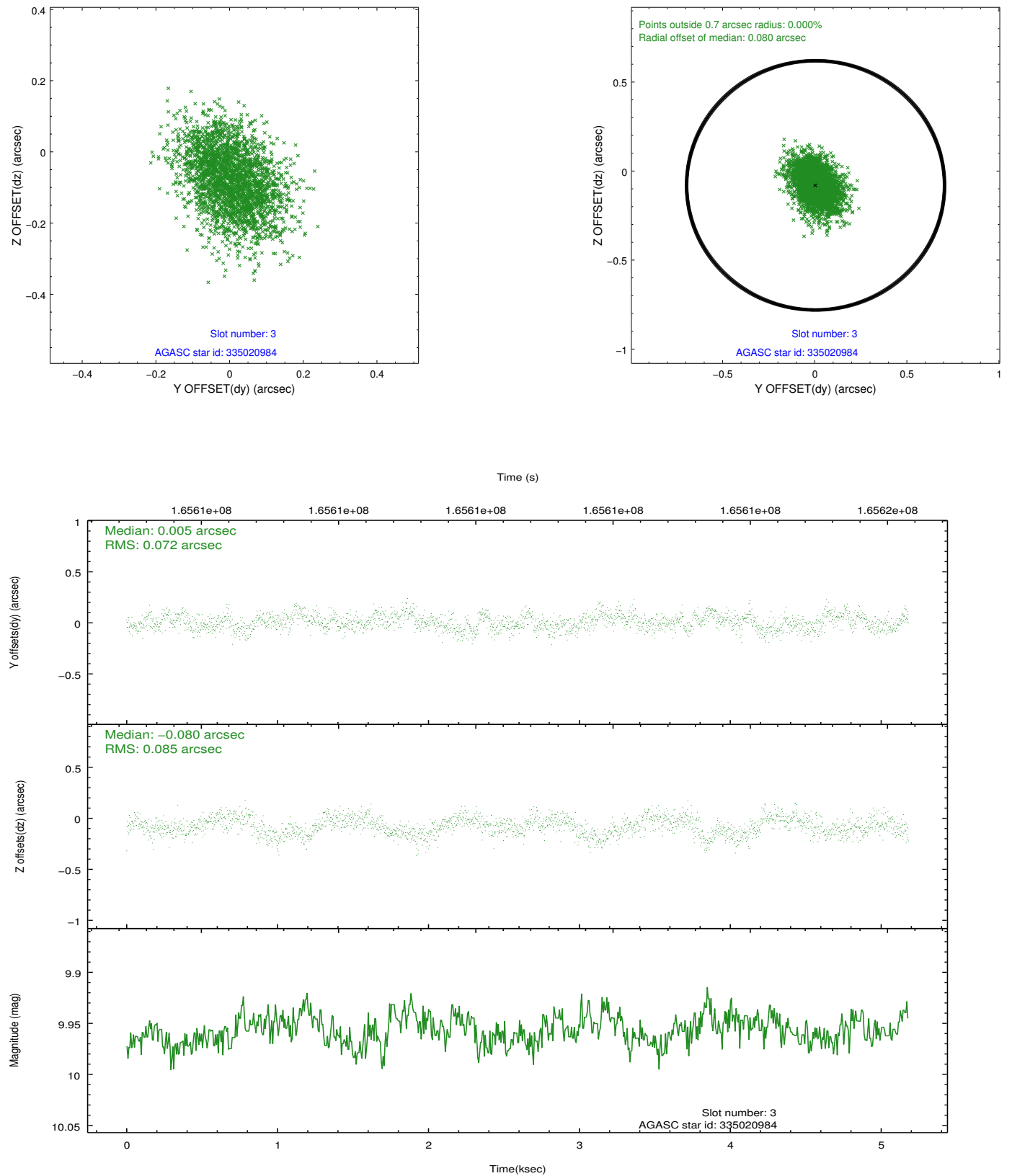


### Slot Statistics

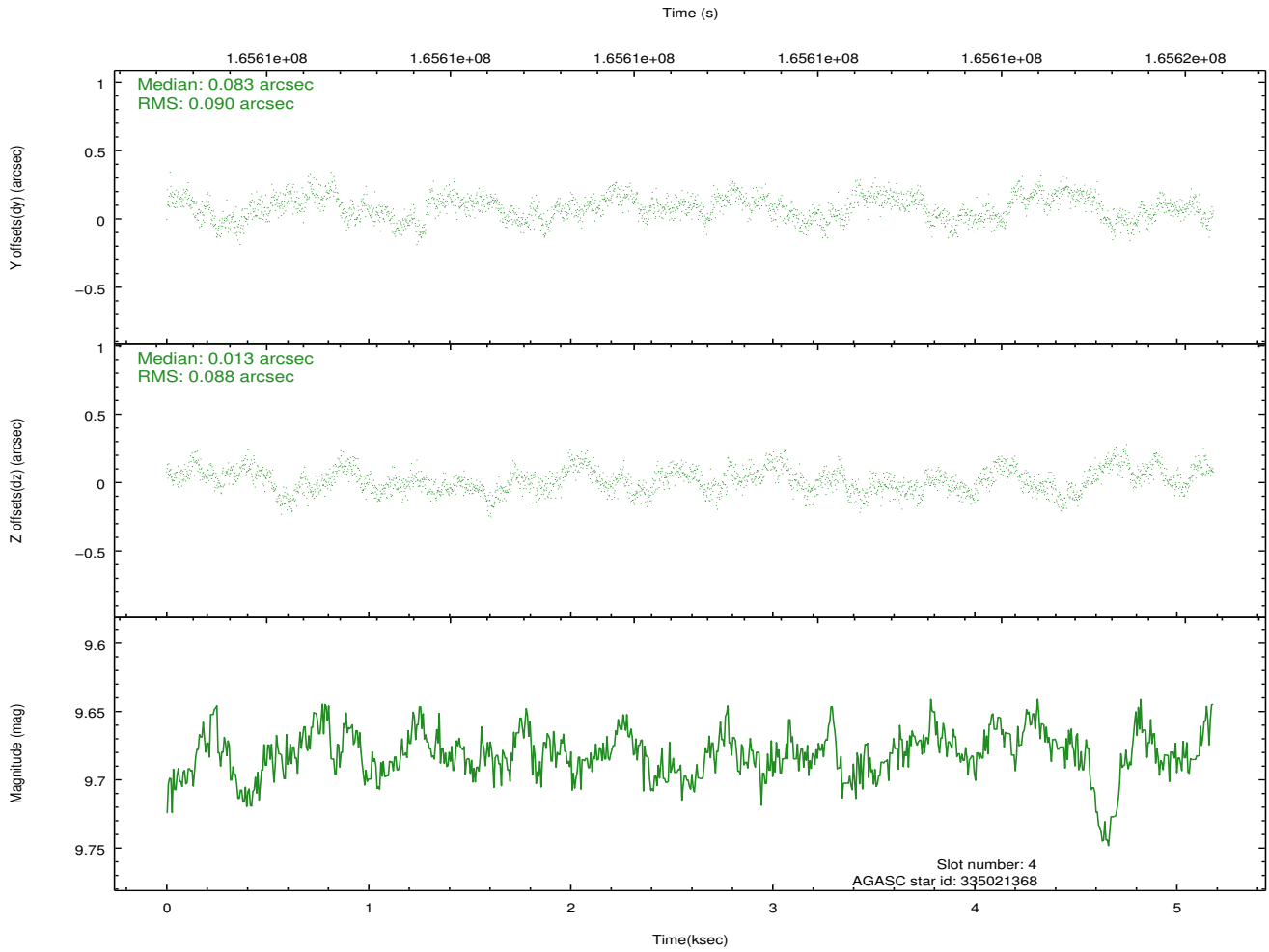
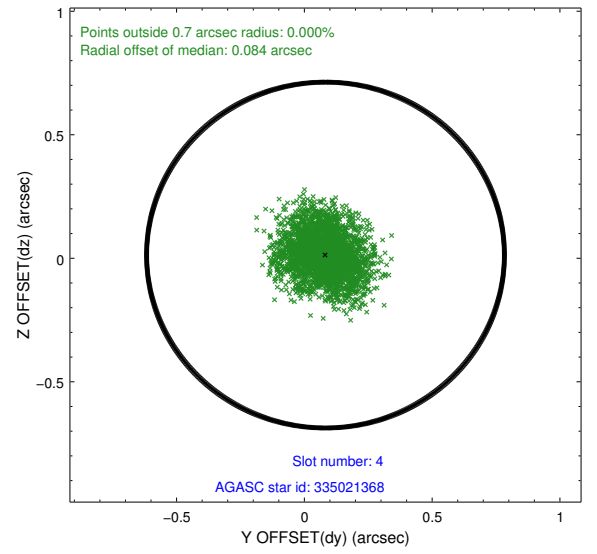
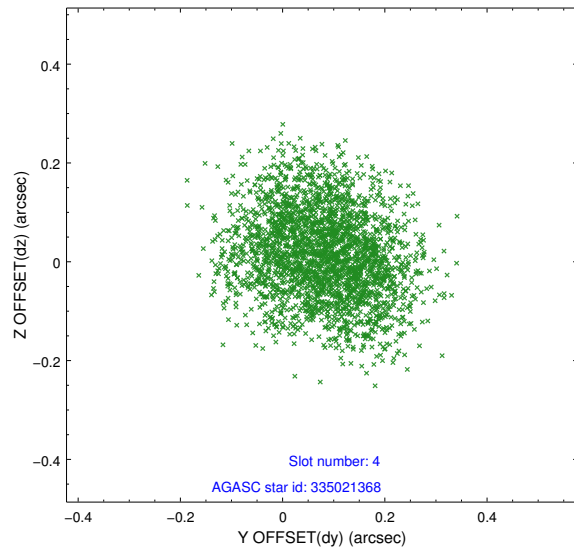
slot	status	id	mag	n_pts	med_dy	med_dz	dr1	dr2	ra	dec	mean_y	mean_z
0	FID	ACIS-I-1	7.25	1264	0.016	-0.008	0.006	0.011	0.000000	0.000000	937.20	-830.06
1	FID	ACIS-I-5	7.24	1264	-0.087	0.054	0.006	0.011	0.000000	0.000000	-1810.32	1066.96
2	FID	ACIS-I-6	7.26	1264	-0.021	0.024	0.007	0.011	0.000000	0.000000	401.49	1712.72
3	GUIDE	335020984	9.96	2524	0.005	-0.080	0.118	0.194	218.841668	33.815112	-1416.66	-934.43
4	GUIDE	335021368	9.68	2526	0.083	0.013	0.137	0.209	217.529643	33.934817	1894.93	1208.18
5	GUIDE	335025040	9.91	2528	-0.111	0.010	0.128	0.218	218.601670	34.305240	257.66	-1840.90
6	GUIDE	335025848	9.73	2524	-0.048	-0.116	0.107	0.172	217.530531	33.778292	1540.29	1645.17
7	GUIDE	335028696	9.18	2526	0.078	0.168	0.085	0.137	217.260519	33.844112	2319.27	1967.31

## 2.4 Star Slots

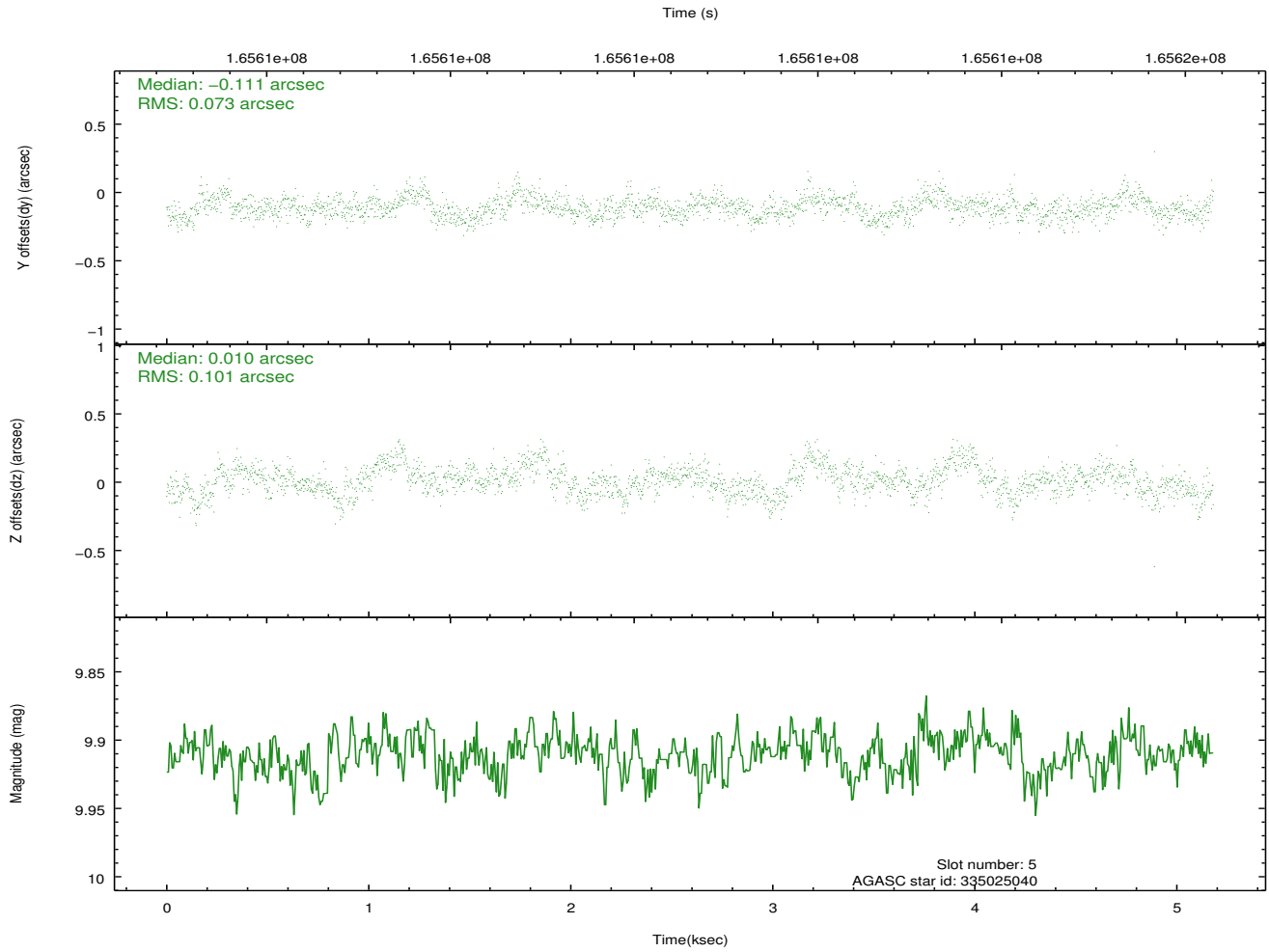
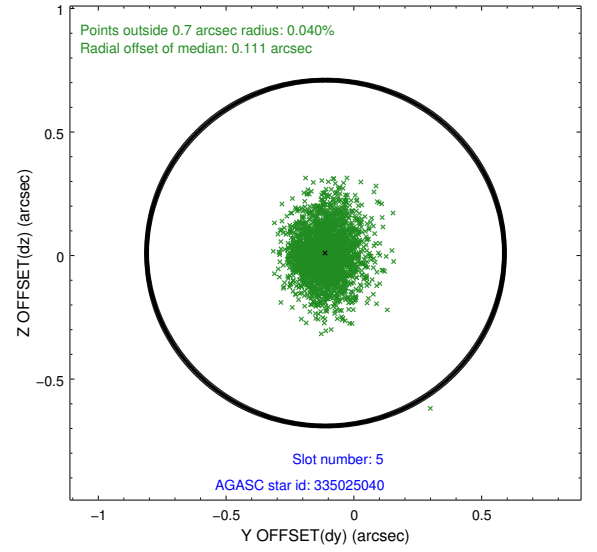
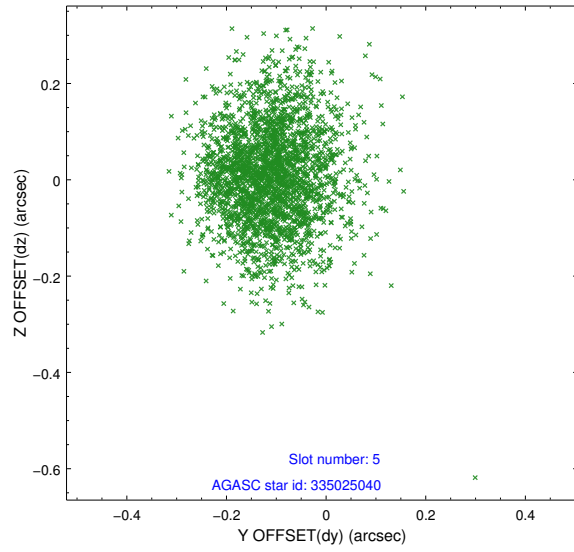
### 2.4.1 Slot 3



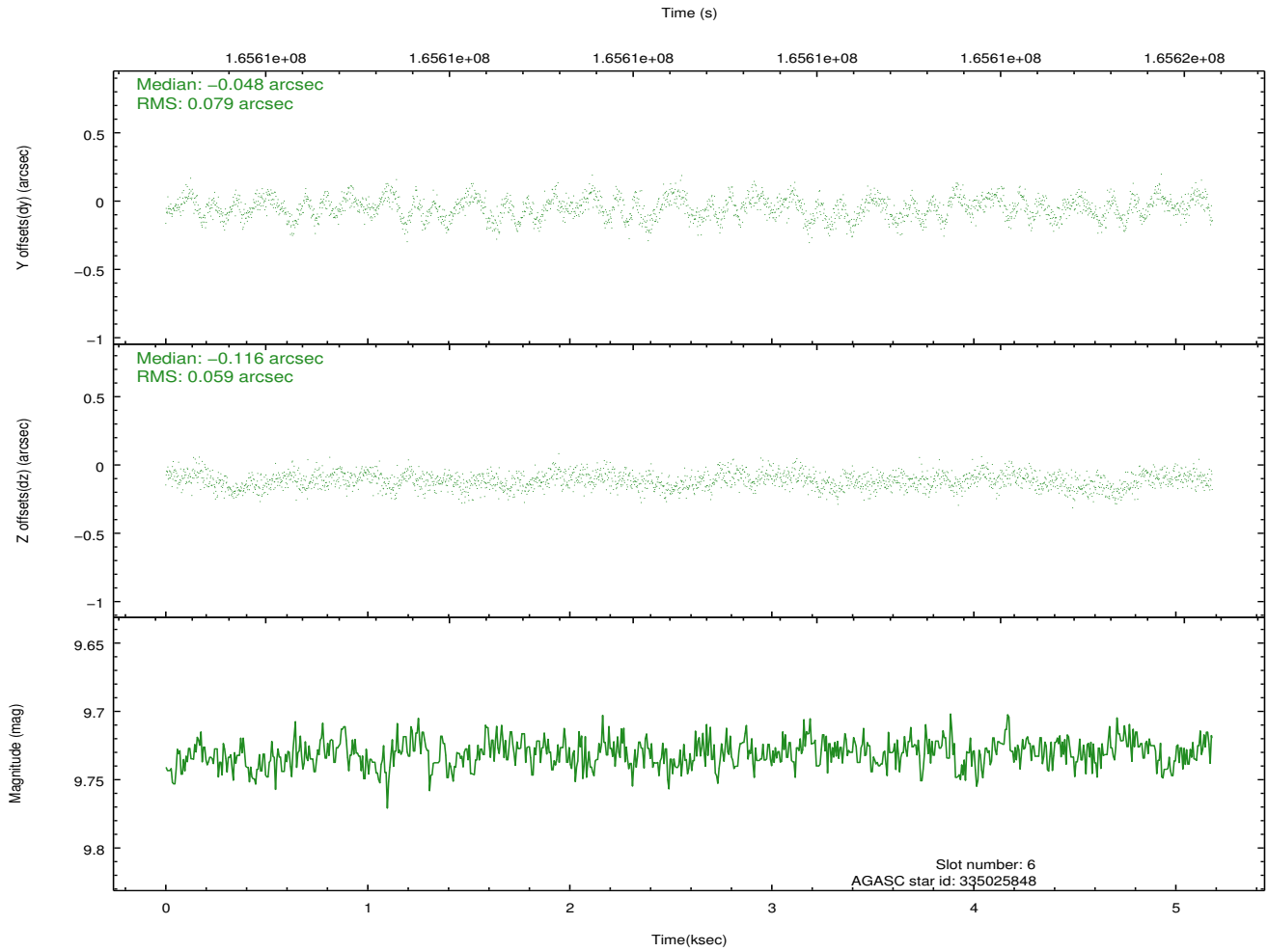
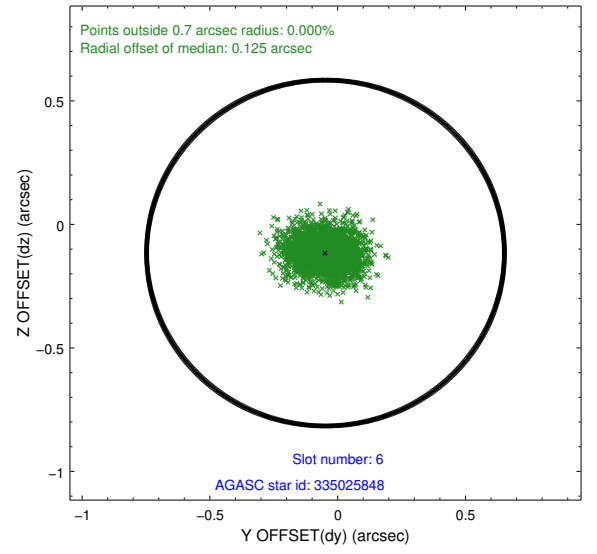
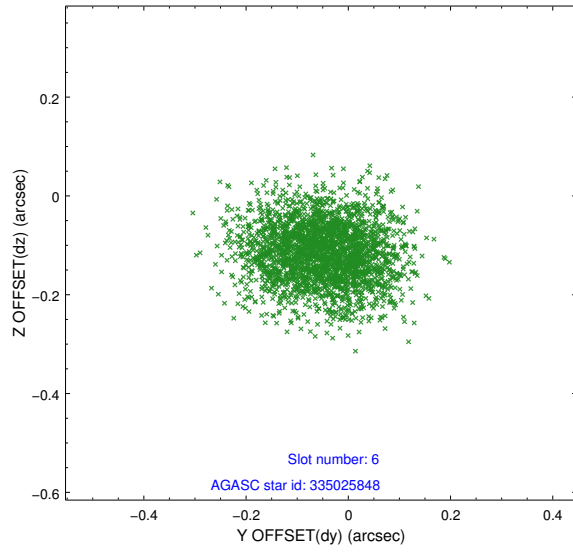
## 2.4.2 Slot 4



### 2.4.3 Slot 5

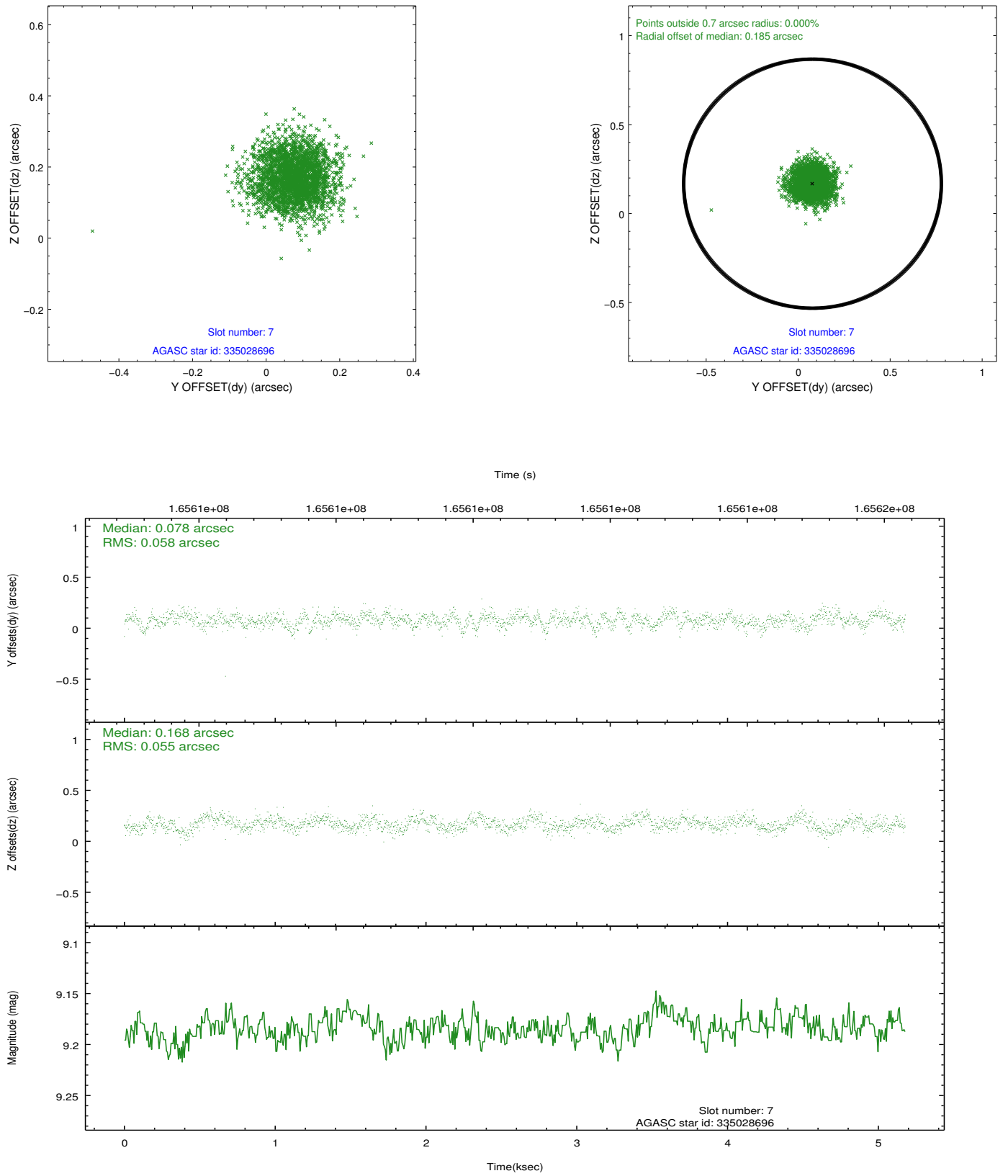


## 2.4.4 Slot 6



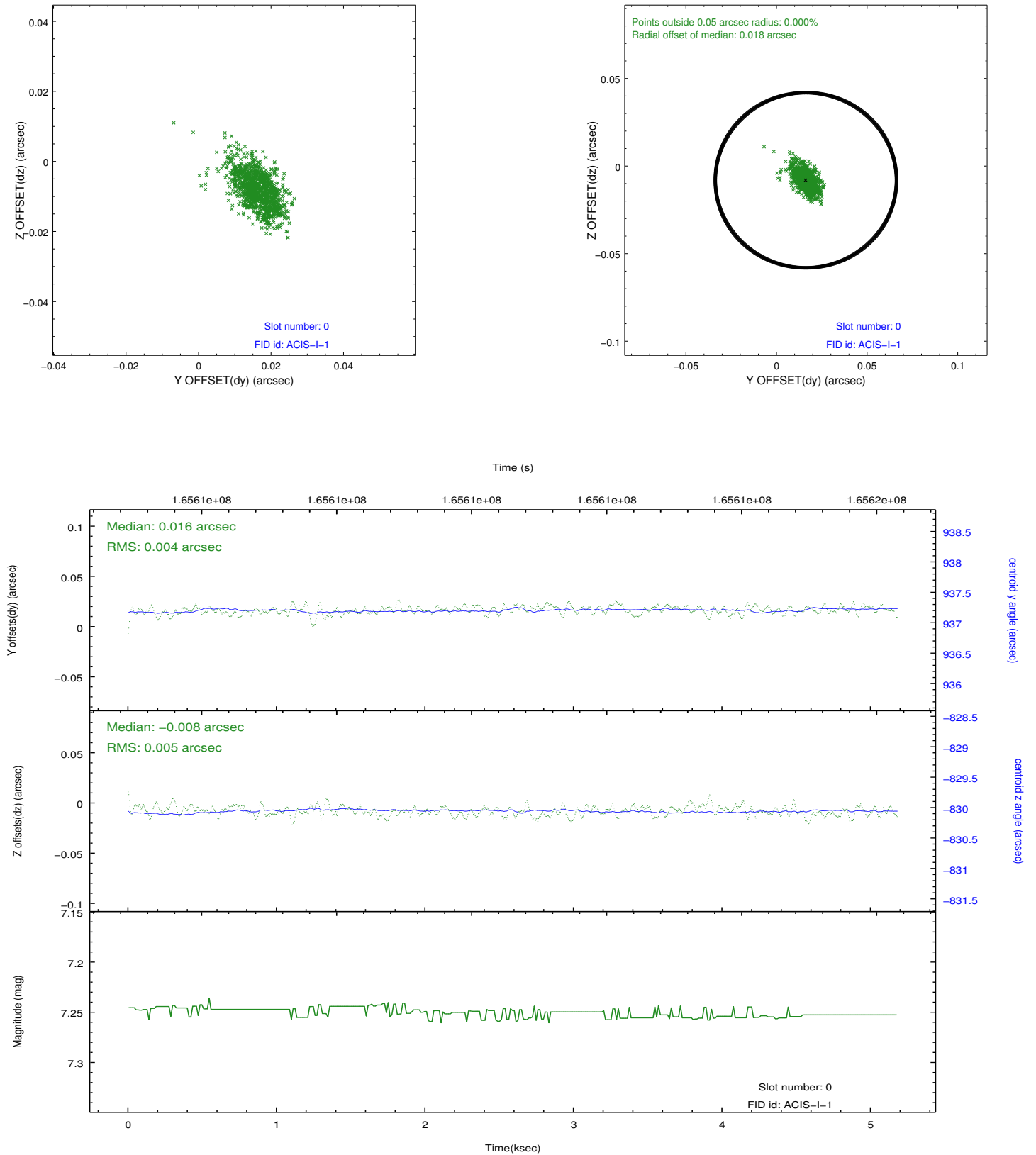


## 2.4.5 Slot 7

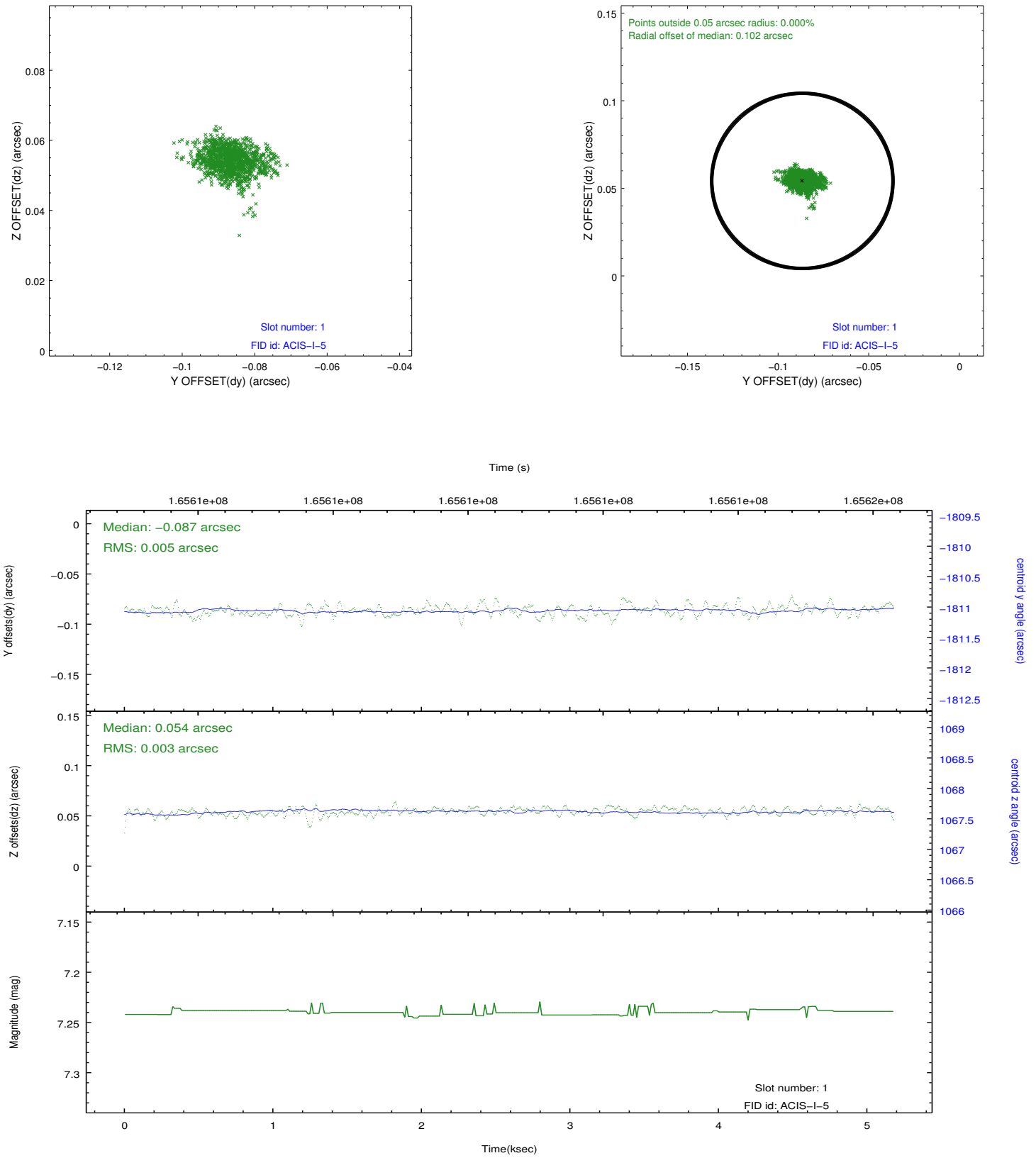


## 2.5 FID Slots

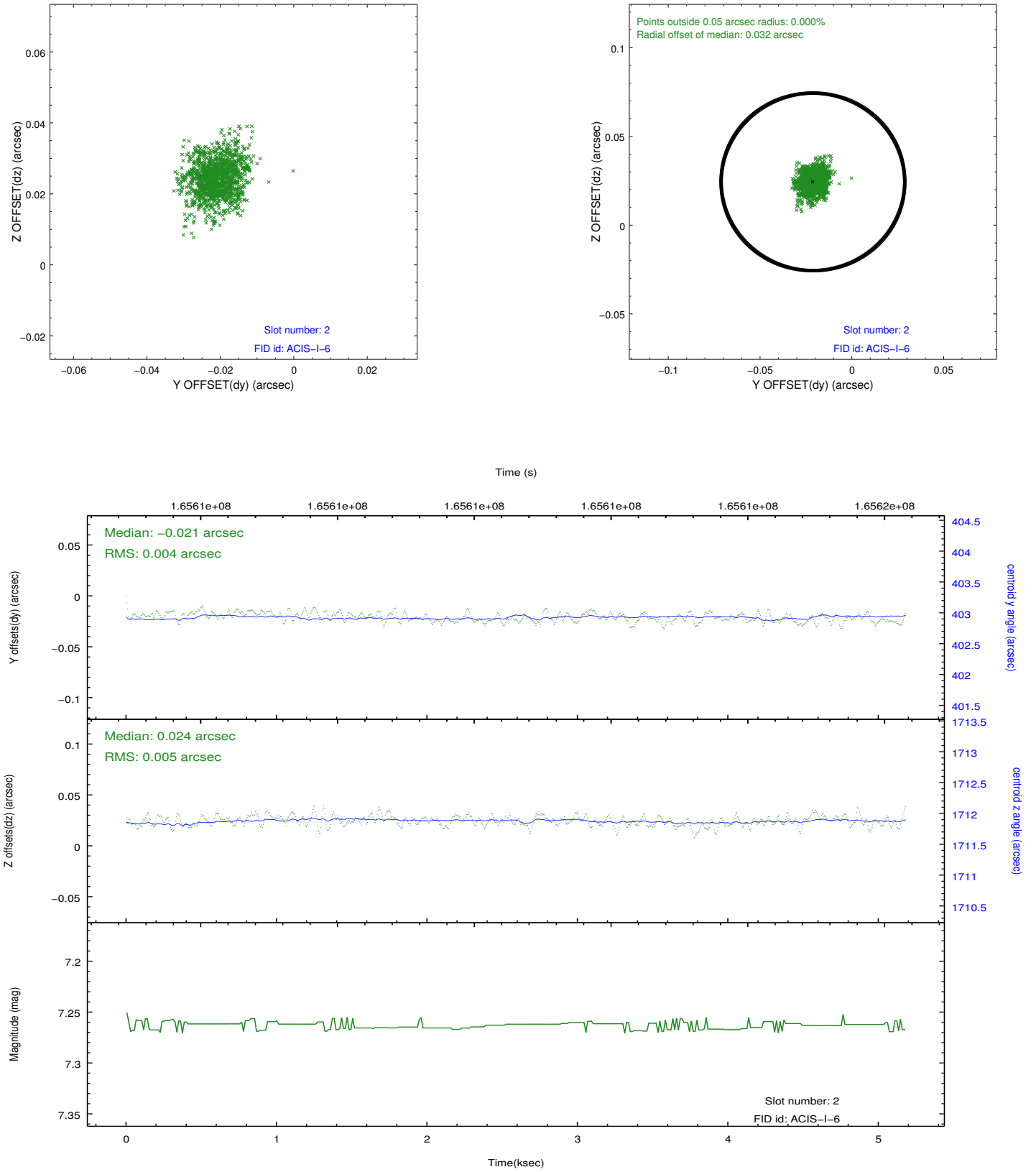
### 2.5.1 Slot 0



## 2.5.2 Slot 1



### 2.5.3 Slot 2



## A Summary

### A.1 Status

V&V Scientist	Beth Sundheim
V&V Date (YYYY-MM-DD)	2012.11.09
V&V Edition	1
V&V Disposition and Status	OK
V&V Charge Time	4.777

### A.2 Comments