

V&V Reference Report

L2 ASCDS Version : 7.6.8

Observation 4229 - L2 Version 001
Chandra X-Ray Center

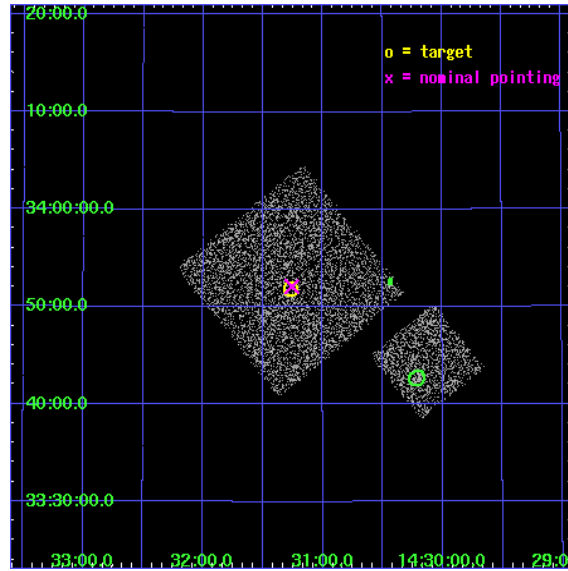
L2 Processing Date : Jul 29 2006

Contents

1	Front	2
2	OBI	3
2.1	OBI	3
2.1.1	Images	3
2.1.2	Bias	3
2.1.3	Parameters	4
2.1.4	Events	4
2.2	Compared Parameters	5
2.3	Aspect	6
2.4	Star Slots	9
2.4.1	Slot 3	9
2.4.2	Slot 4	10
2.4.3	Slot 5	11
2.4.4	Slot 6	12
2.4.5	Slot 7	13
2.5	FID Slots	14
2.5.1	Slot 0	14
2.5.2	Slot 1	15
2.5.3	Slot 2	16
3	Point Sources	17
A	Summary	18
A.1	Status	18
A.2	Comments	18

1 Front

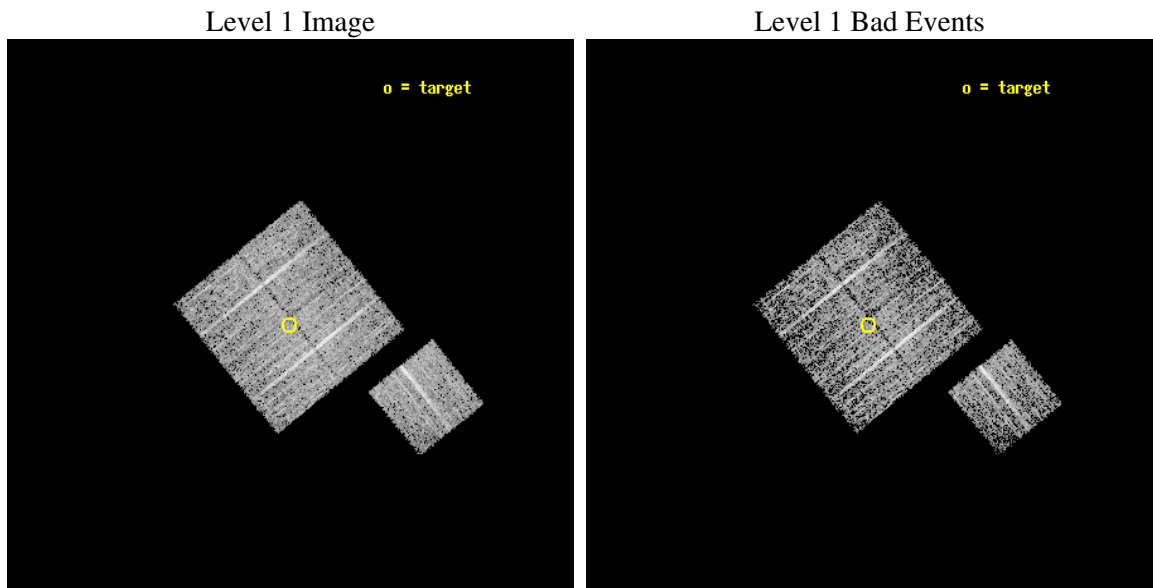
seq_num	900272
obs_id	4229
title	A CHANDRA WIDE-FIELD SURVEY TO MAP THE COSMIC WEB AND INVESTIGATE THE EVOLUTION OF NUCLEAR ACCRETION
observer	Dr. Christine Jones
object	SS36
dtcycle	0
cycle	P
ra_targ	217.816997
dec_targ	33.864306
ra_nom	217.81441265584
dec_nom	33.868397032476
roll_nom	141.01009320006
revision	2
ontime	4674.7999910116
livetime	4613.7202875914
ontime0	4674.7999910116
ontime1	4674.7999910116
ontime2	4674.7999910116
ontime3	4674.7999910116
ontime6	4674.7999910116
l2events	9150



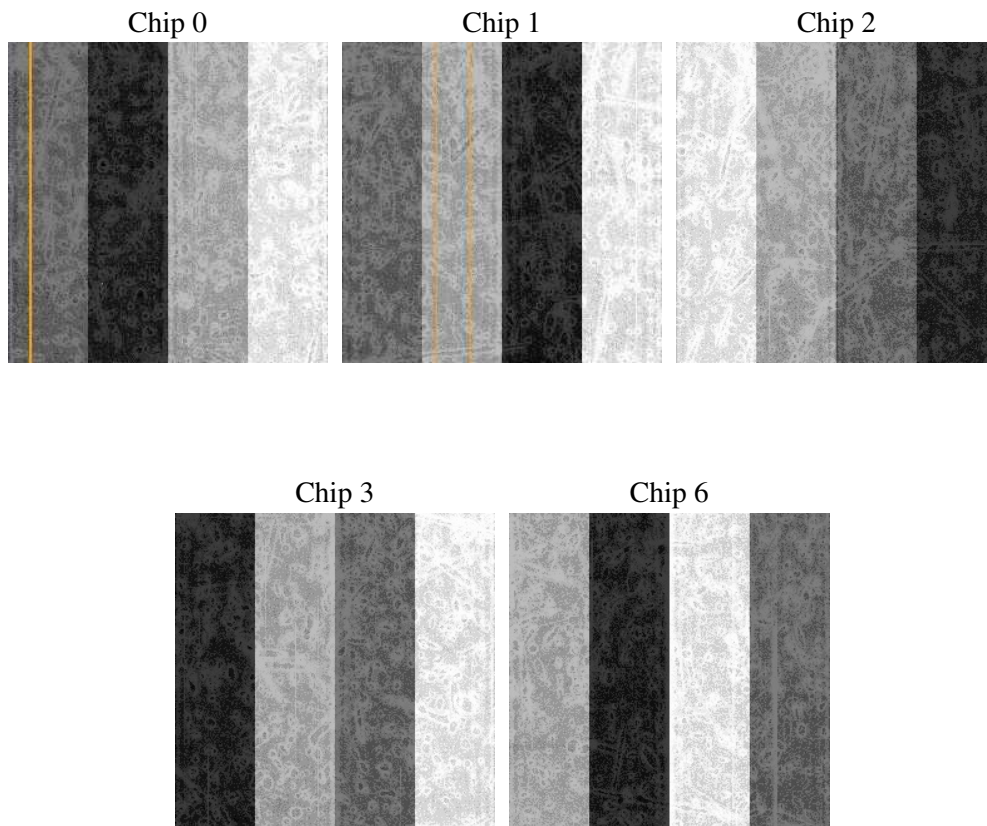
2 OBI

2.1 OBI

2.1.1 Images



2.1.2 Bias



2.1.3 Parameters

obi_num	1
ascdsver	7.6.8
caldbver	3.2.2
date	2006-07-29T20:29:06
revision	2

sched_exp_time	4900.000000
ontime	4680.1060472131
ontime0	4680.1060273051
ontime1	4680.1060472131
ontime2	4680.1060273051
ontime3	4680.1060472131
ontime6	4680.1060273051
llevents	111733

2.1.4 Events

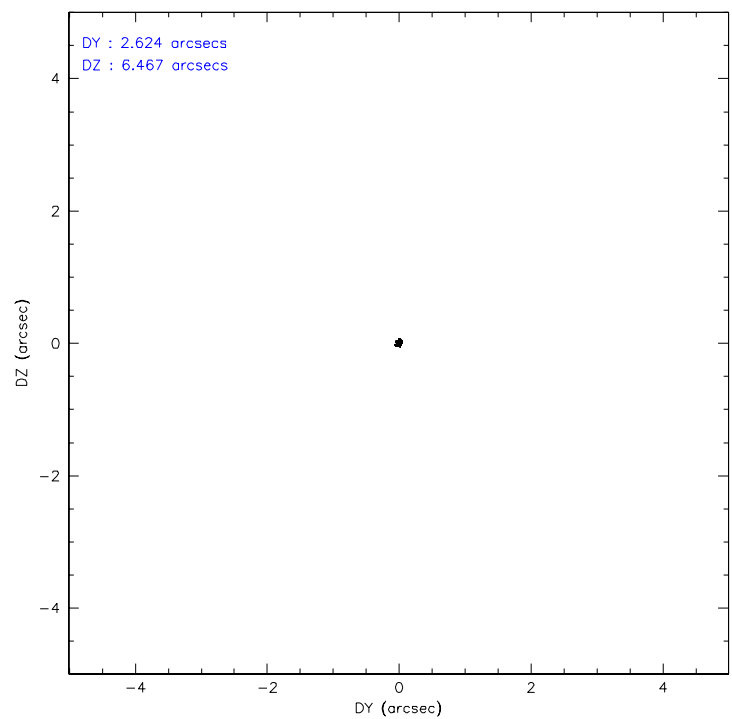
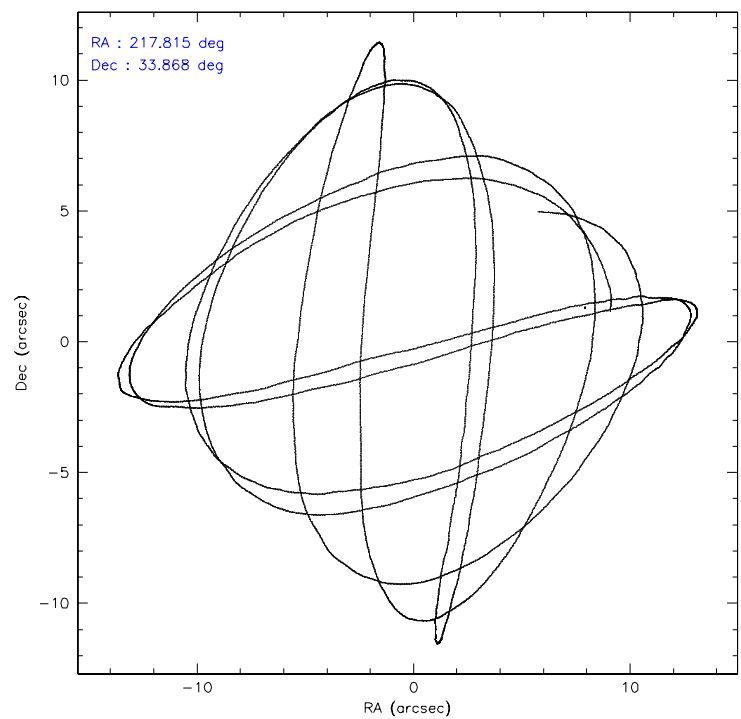
	ccd 0	ccd 1	ccd 2	ccd 3	ccd 6
level 1 events	21181	21130	23297	23657	22468
rejected events	18944	18804	21185	21464	20166
rejected %	89%	88%	90%	90%	89%

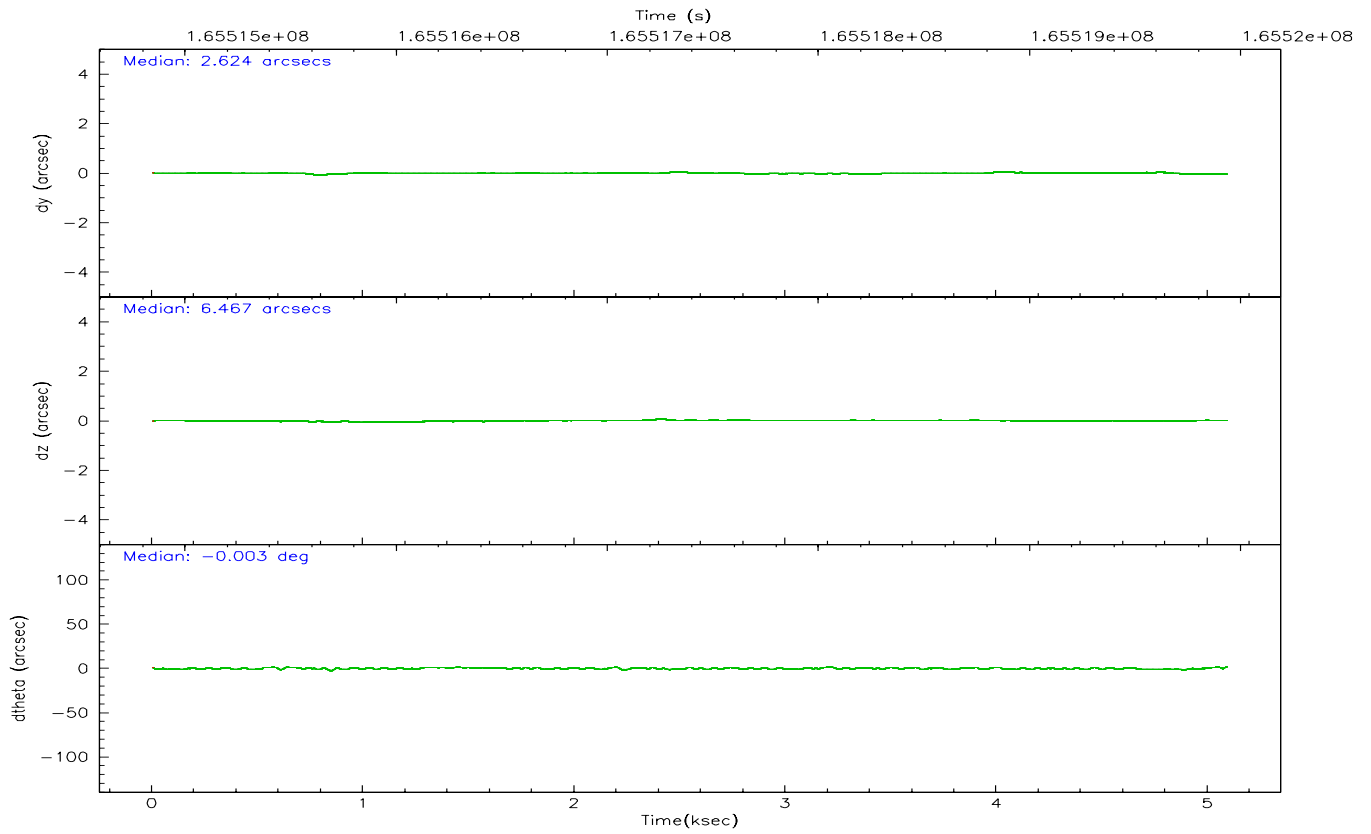
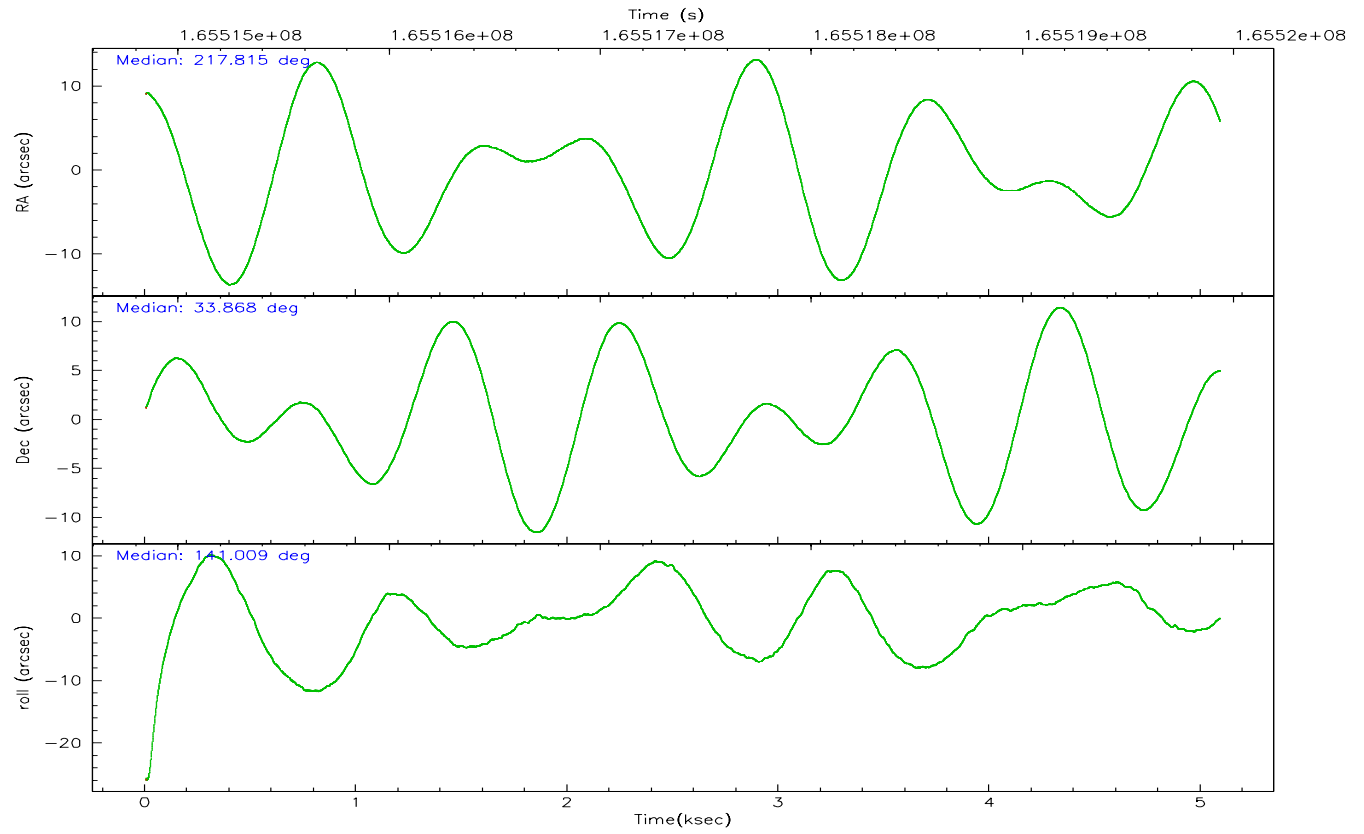
	ccd 0	ccd 1	ccd 2	ccd 3	ccd 6
grade 0 events	755	777	782	789	853
	3%	3%	3%	3%	3%
grade 1 events	9	20	13	9	8
	0%	0%	0%	0%	0%
grade 2 events	563	496	508	458	475
	2%	2%	2%	1%	2%
grade 3 events	268	320	230	271	271
	1%	1%	0%	1%	1%
grade 4 events	240	277	224	244	270
	1%	1%	0%	1%	1%
grade 5 events	671	686	579	746	731
	3%	3%	2%	3%	3%
grade 6 events	412	458	370	432	434
	1%	2%	1%	1%	1%
grade 7 events	18263	18096	20591	20708	19426
	86%	85%	88%	87%	86%

2.2 Compared Parameters

Parameter	Planned	Actual	Parameter	Planned	Actual
Instrument	ACIS	ACIS	Obspar format version number	6	6
Detector	ACIS-01236	ACIS-01236	Obspar file type	PREDICTED	ACTUAL
Grating	NONE	NONE	Obspar update status	NONE	UPDATED
Data mode	VFAINT	VFAINT	On-chip summing requested	N	N
Observation mode	POINTING	POINTING	Subarray requested	NONE	NONE
Pointing RA	217.846971	217.8144126558379	Alternating exposures requested	N	N
Pointing Dec	33.864217	33.86839703247642	Primary exposure time	0.000000	3.1
Pointing Roll	140.783294	141.010093200057			
SIM focus pos (mm)	-0.782348	-0.7809083437167272			
SIM defocus (mm)	0	0.001439871863259334			
SIM translation stage pos (mm)	-233.592463	-233.5874344608287			
SIM translation stage offset (mm)	0	-0.005018542100998502			
Observation start time	165515044.184000	165514668.10517			
Observation start date	2003-03-31T16:23:00	2003-03-31T16:17:48			
Observation end time	165519944.184000	165520078.0554			
Observation end date	2003-03-31T17:44:40	2003-03-31T17:47:58			
Read mode	TIMED	TIMED			

2.3 Aspect



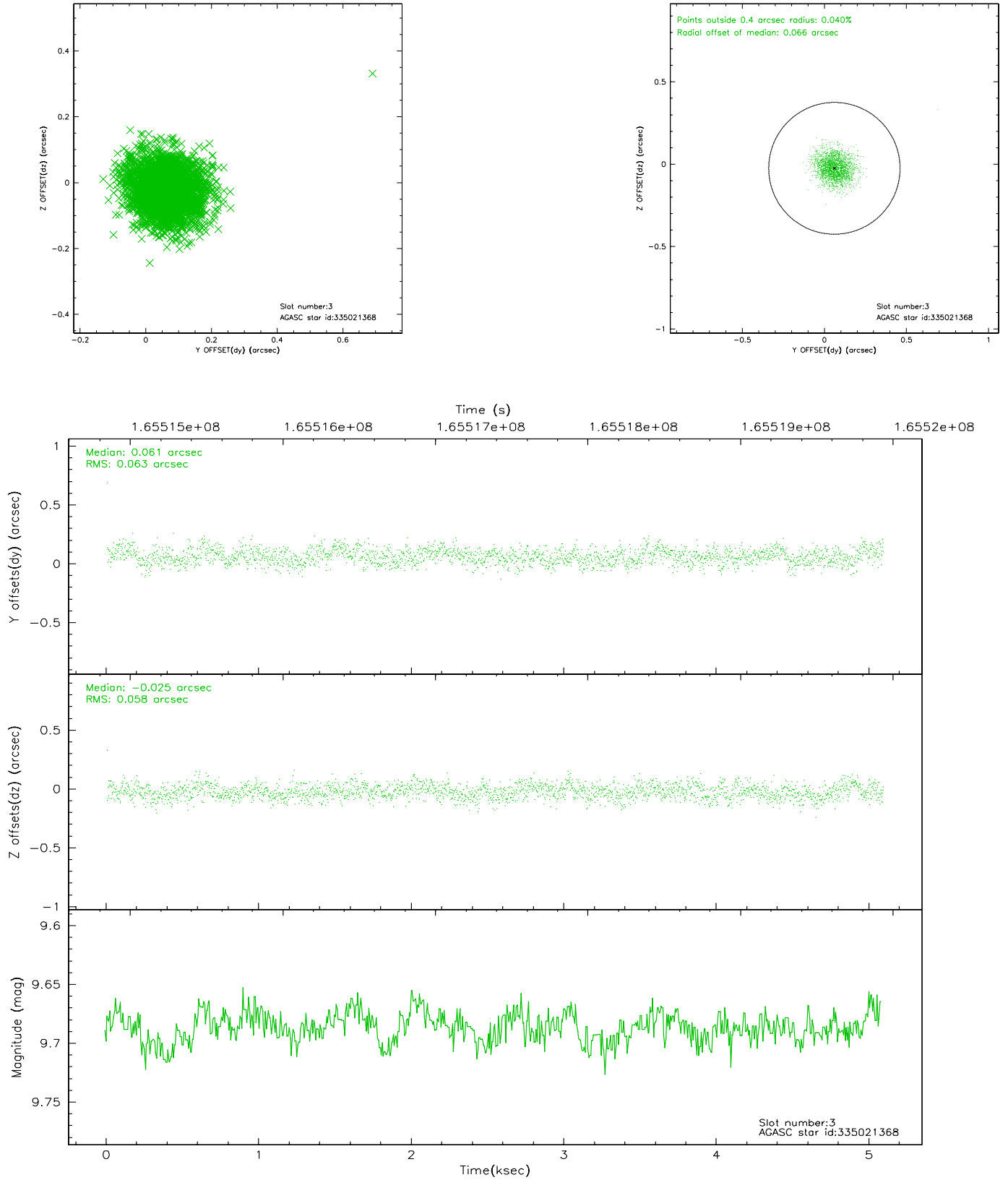


Slot Statistics

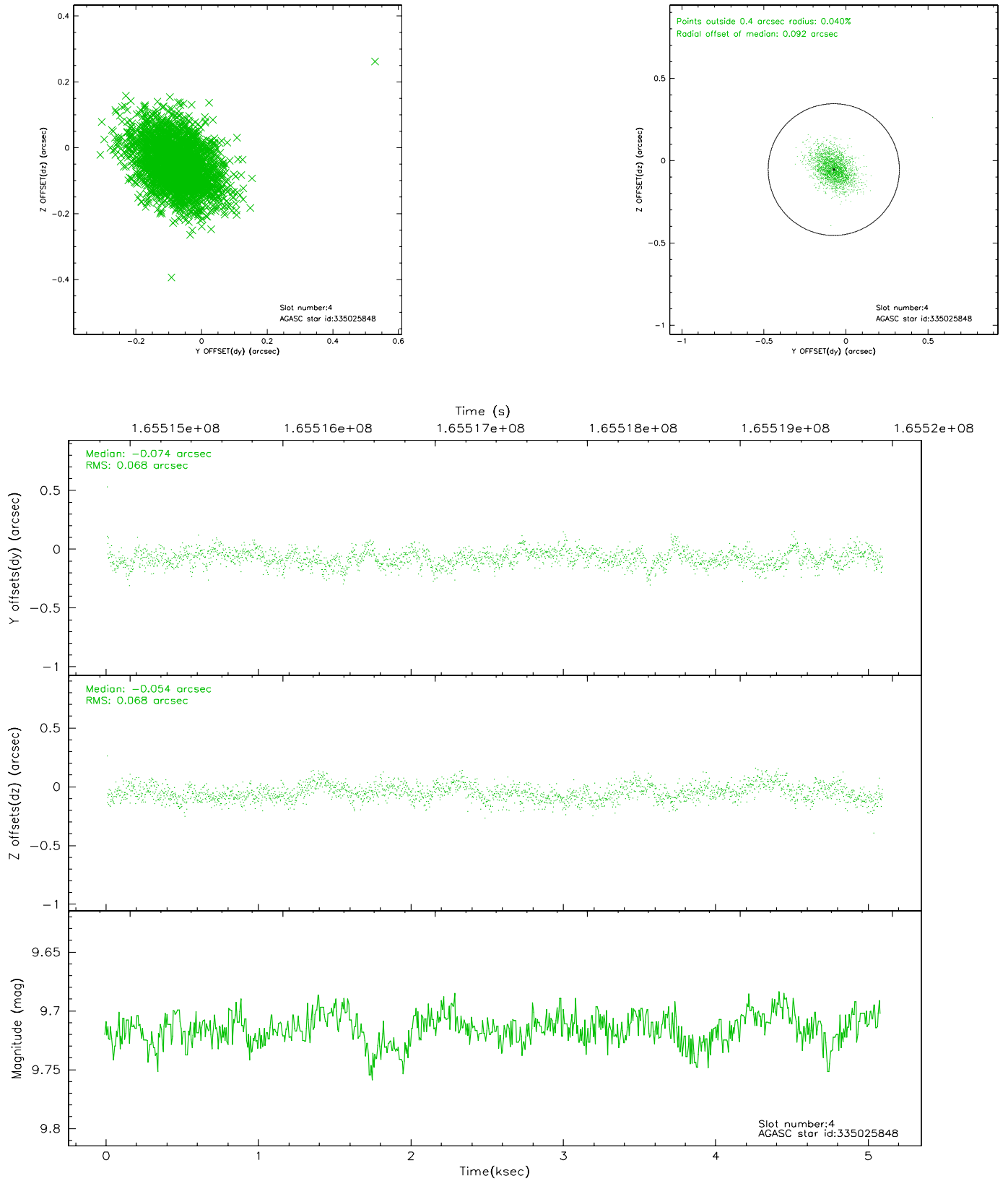
slot	status	id	mag	n_pts	med_dy	med_dz	dr1	dr2	ra	dec	mean_y	mean_z
0	FID	ACIS-I-2	7.17	1242	-0.039	-0.072	0.009	0.015	0.000000	0.000000	-757.02	-836.29
1	FID	ACIS-I-4	7.18	1241	0.026	0.049	0.006	0.010	0.000000	0.000000	2156.54	1069.43
2	FID	ACIS-I-5	7.23	1241	-0.089	0.091	0.009	0.014	0.000000	0.000000	-1809.38	1068.65
3	GUIDE	335021368	9.69	2480	0.061	-0.025	0.091	0.147	217.529643	33.934817	895.98	401.58
4	GUIDE	335025848	9.71	2483	-0.074	-0.054	0.100	0.169	217.530531	33.778292	539.21	837.70
5	GUIDE	335027640	9.11	2482	-0.044	0.081	0.099	0.158	218.092211	33.193770	-2097.77	1402.97
6	GUIDE	335028696	9.21	2482	0.049	0.059	0.079	0.130	217.260519	33.844112	1315.11	1161.89
7	GUIDE	335029384	8.50	2481	0.015	-0.066	0.092	0.152	217.848061	33.088477	-1767.94	2162.39

2.4 Star Slots

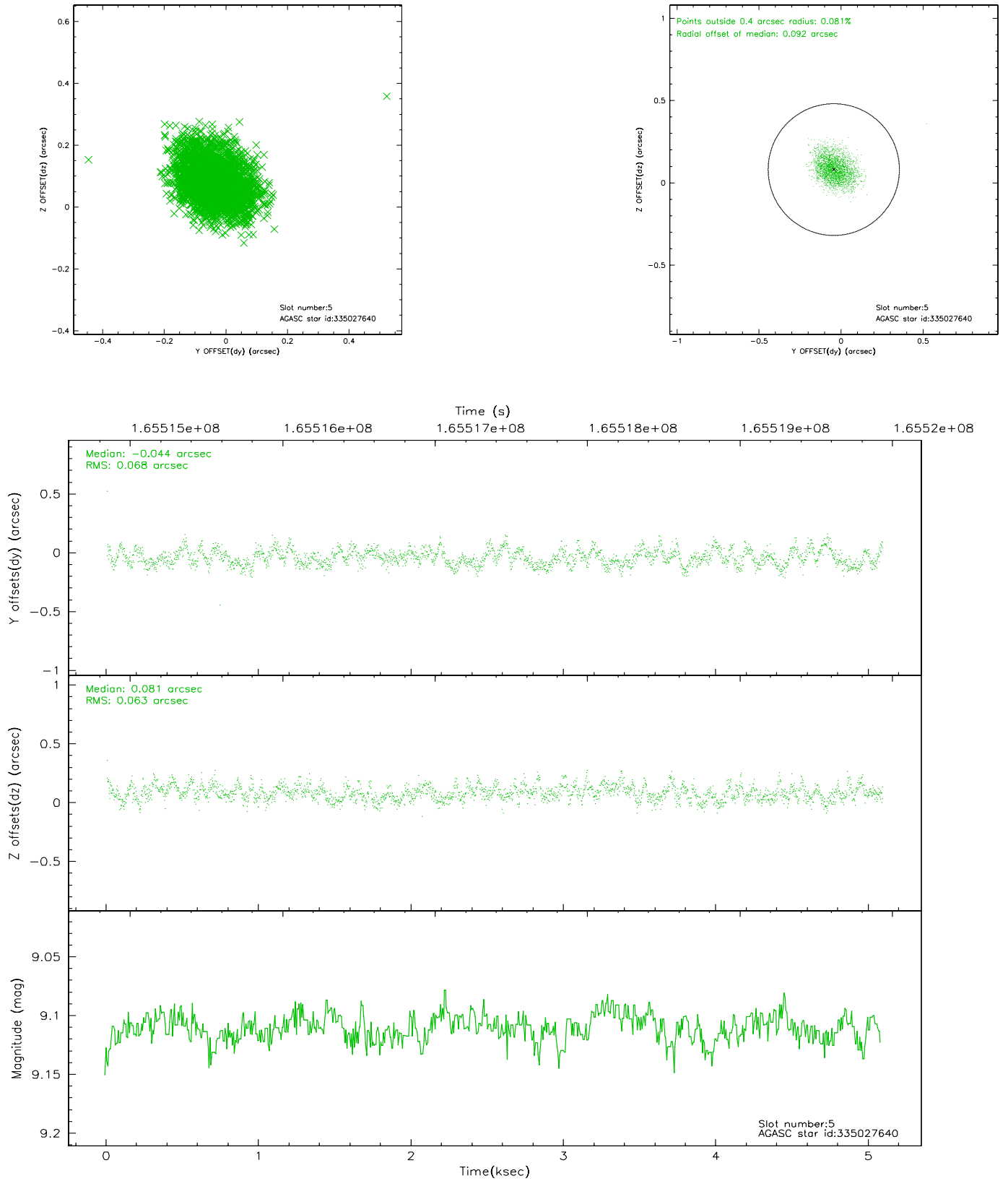
2.4.1 Slot 3



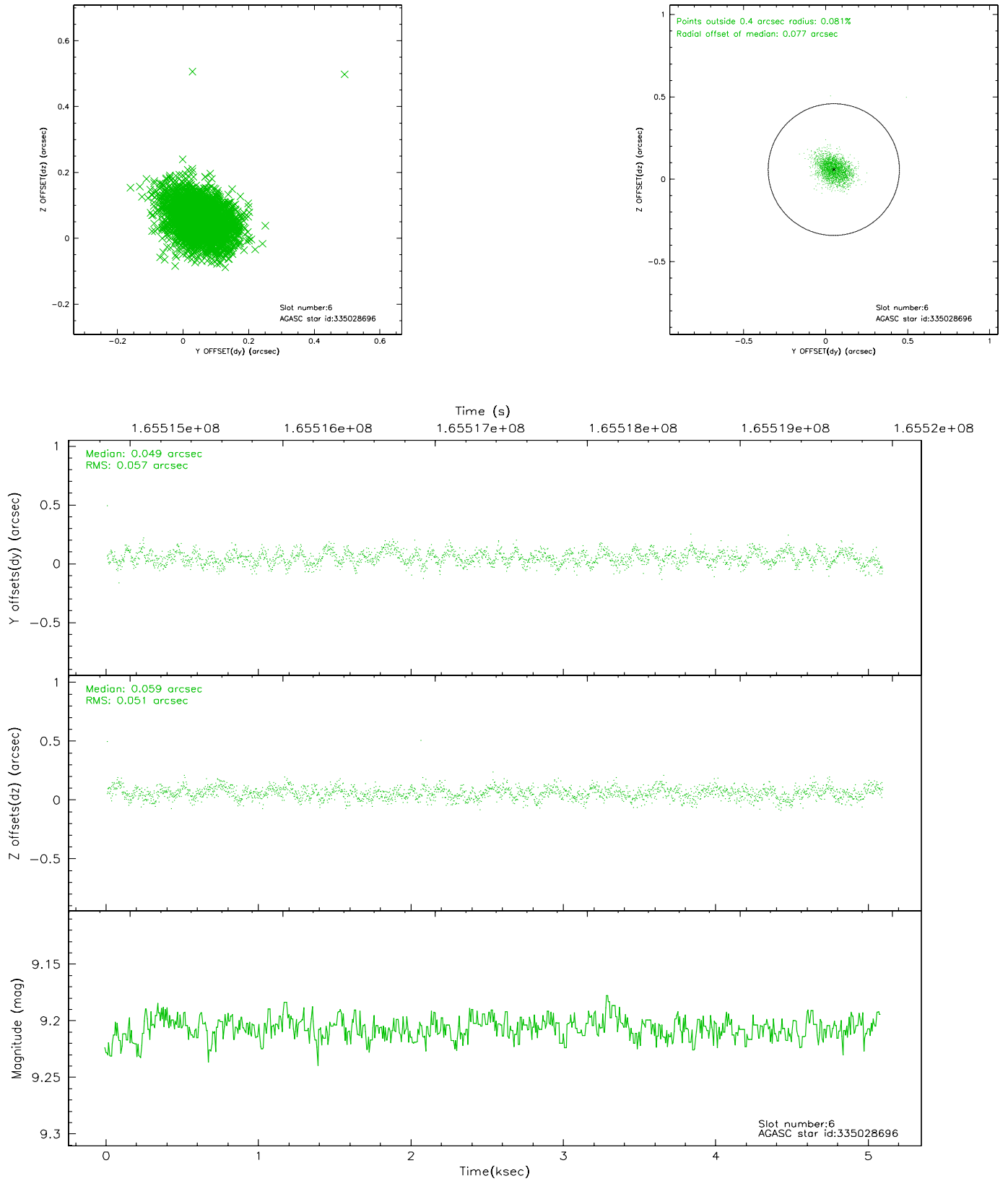
2.4.2 Slot 4



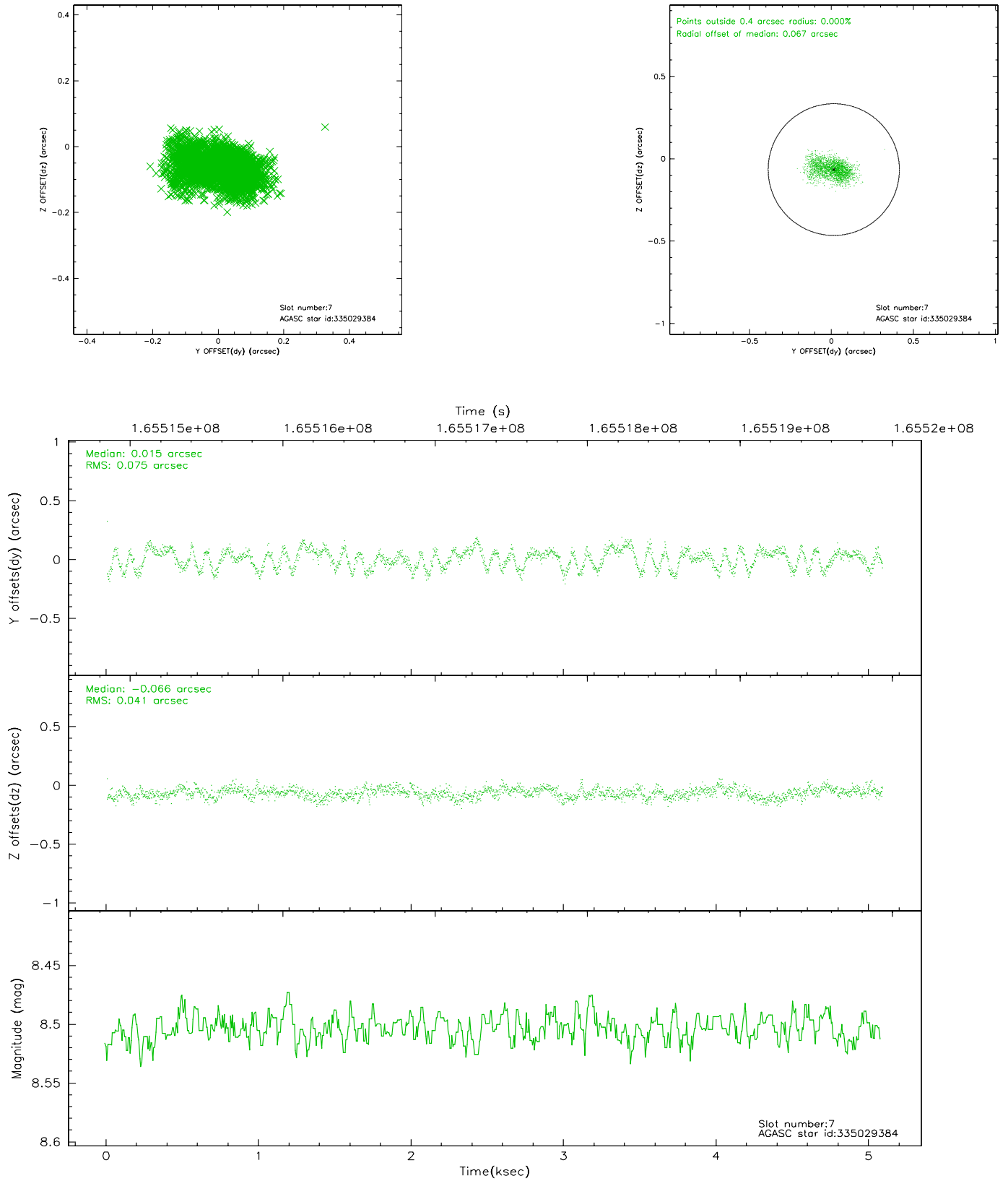
2.4.3 Slot 5



2.4.4 Slot 6

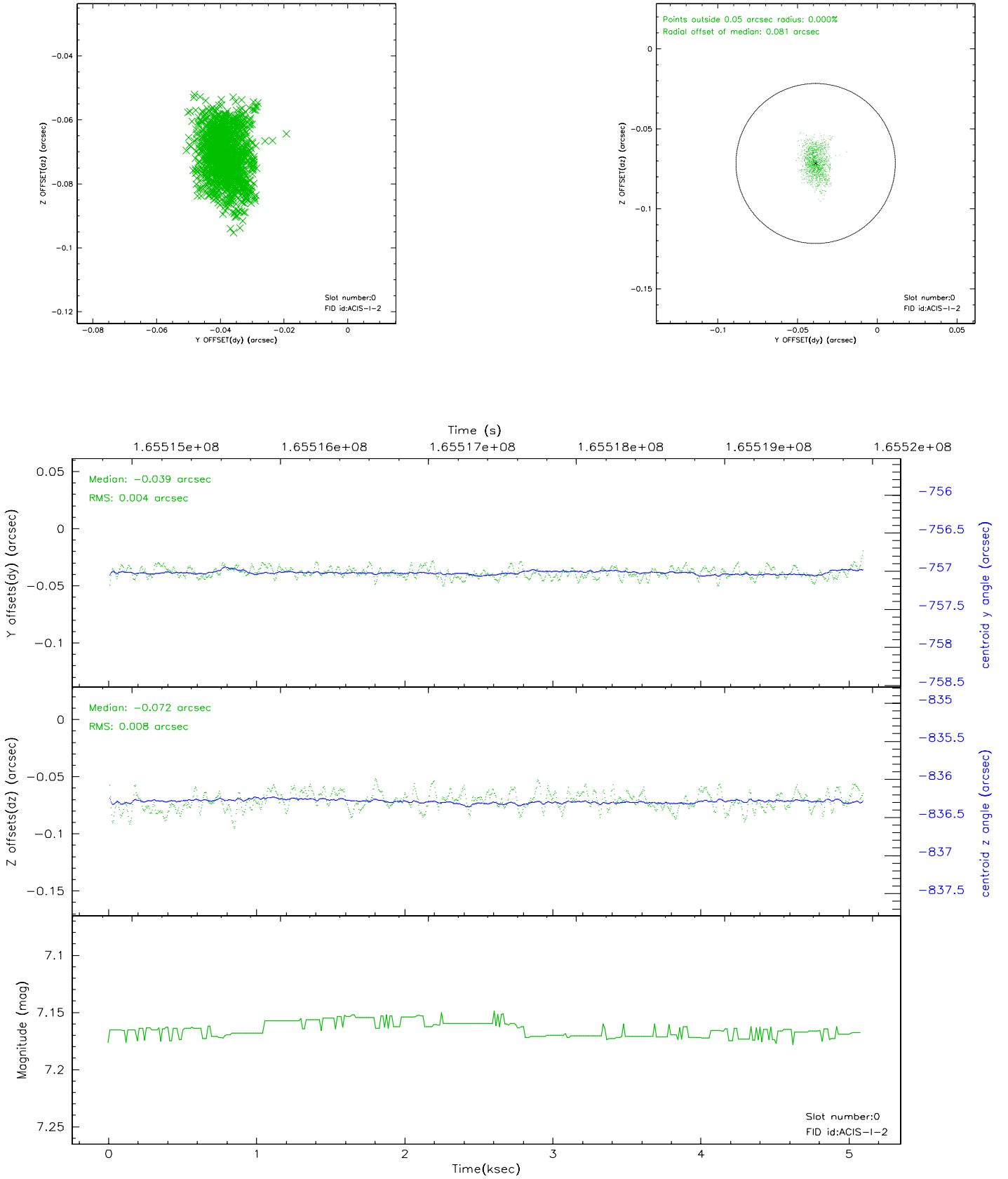


2.4.5 Slot 7

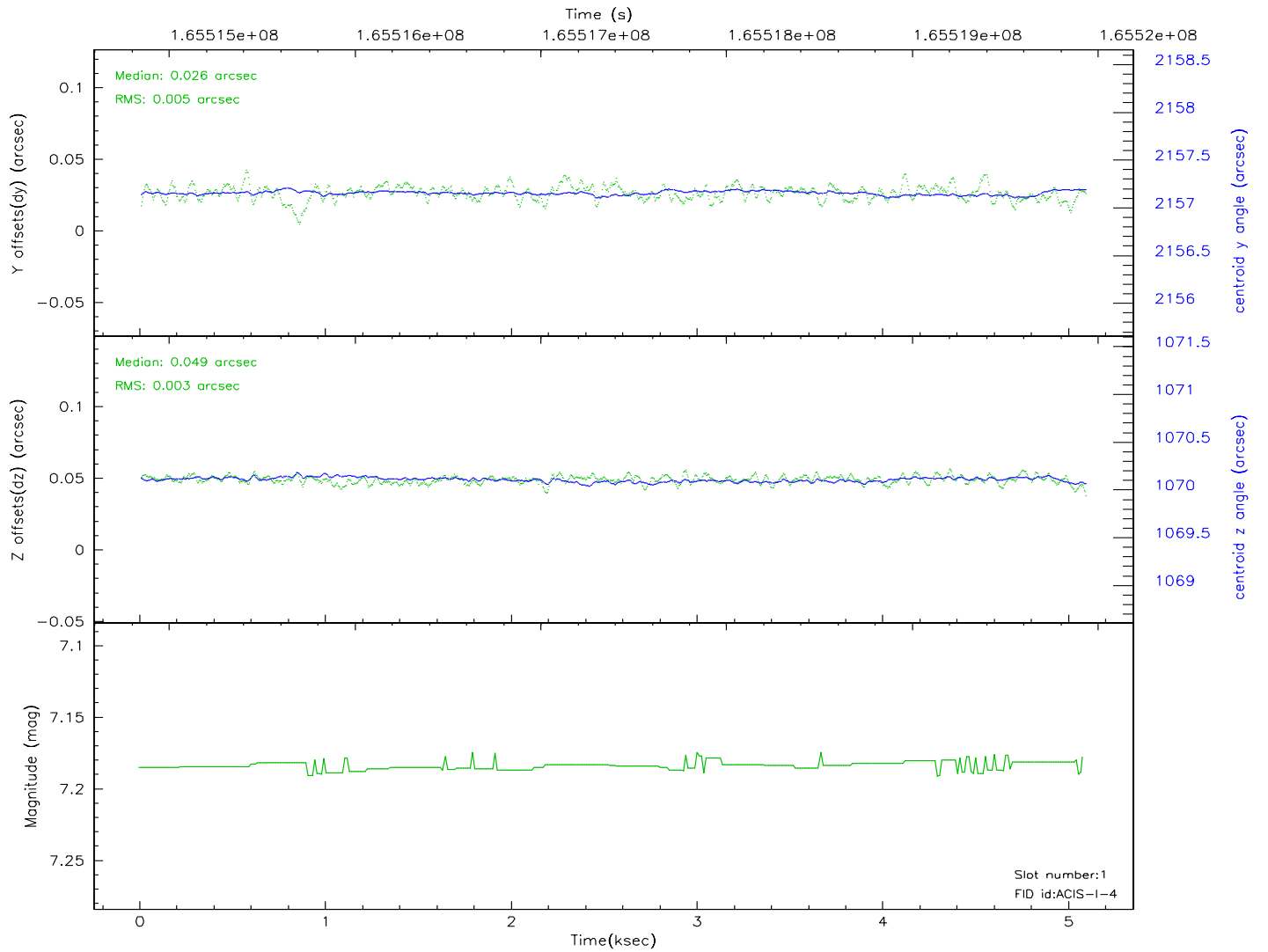
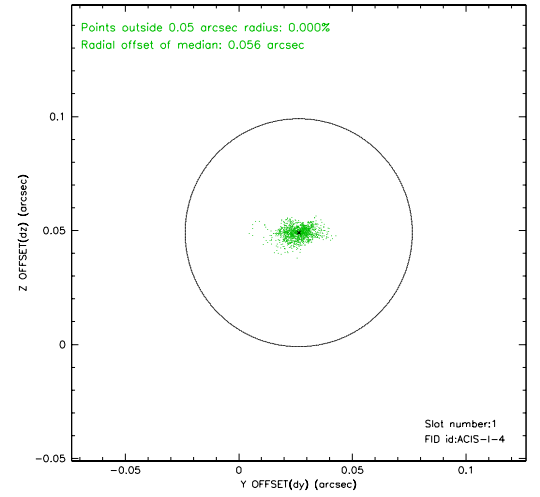
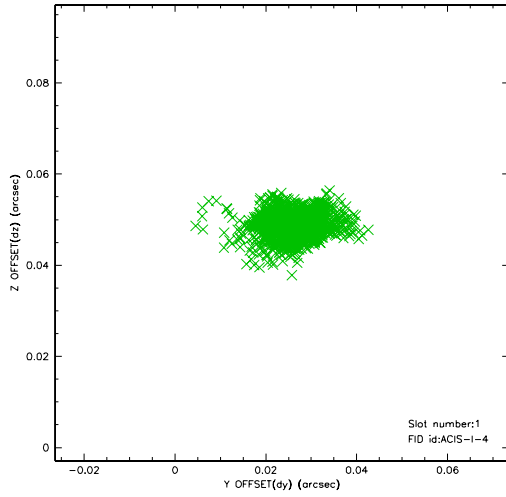


2.5 FID Slots

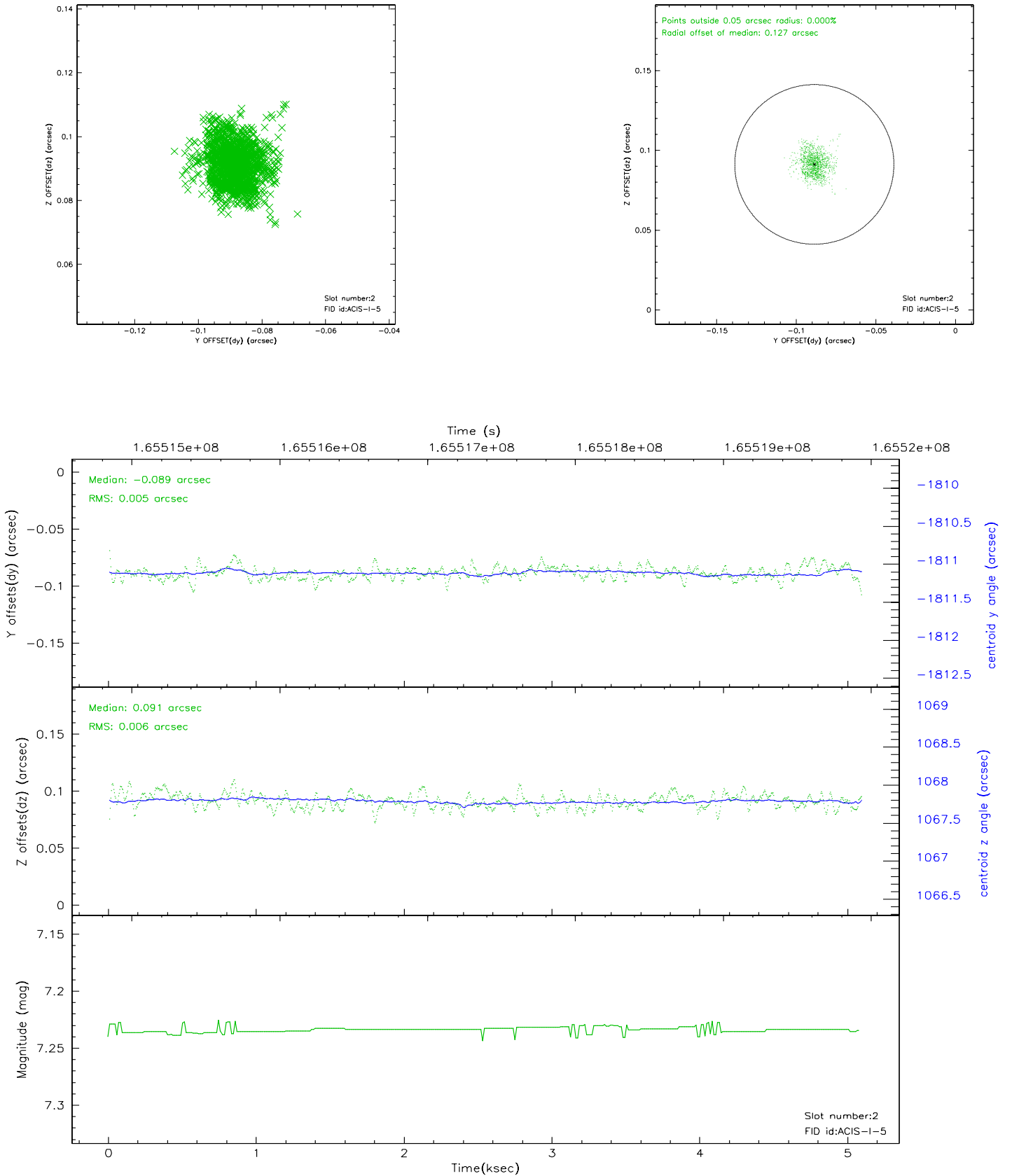
2.5.1 Slot 0



2.5.2 Slot 1



2.5.3 Slot 2



3 Point Sources

10.30 arcmin



A Summary

A.1 Status

V&V Scientist	Jen Lauer
V&V Date (YYYY-MM-DD)	2006.07.30
V&V Edition	1
V&V Disposition and Status	OK
V&V Charge Time	4.674

A.2 Comments