

V&V Reference Report

L2 ASCDS Version : 7.6.8

Observation 4226 - L2 Version 001
Chandra X-Ray Center

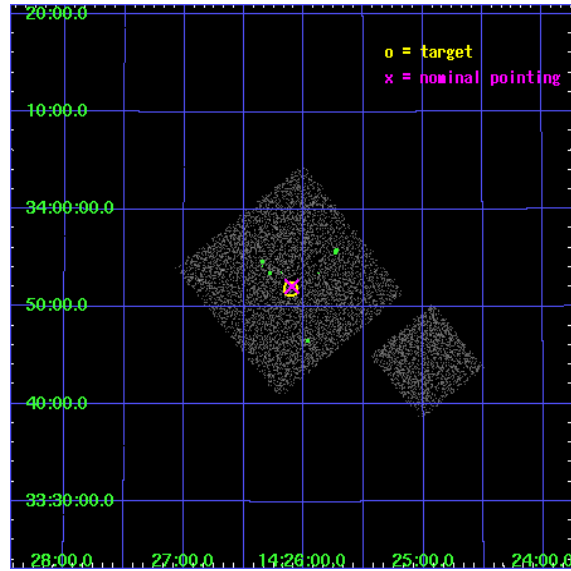
L2 Processing Date : Jul 29 2006

Contents

1	Front	2
2	OBI	3
2.1	OBI	3
2.1.1	Images	3
2.1.2	Bias	3
2.1.3	Parameters	4
2.1.4	Events	4
2.2	Compared Parameters	5
2.3	Aspect	6
2.4	Star Slots	9
2.4.1	Slot 3	9
2.4.2	Slot 4	10
2.4.3	Slot 5	11
2.4.4	Slot 6	12
2.4.5	Slot 7	13
2.5	FID Slots	14
2.5.1	Slot 0	14
2.5.2	Slot 1	15
2.5.3	Slot 2	16
3	Point Sources	17
A	Summary	18
A.1	Status	18
A.2	Comments	18

1 Front

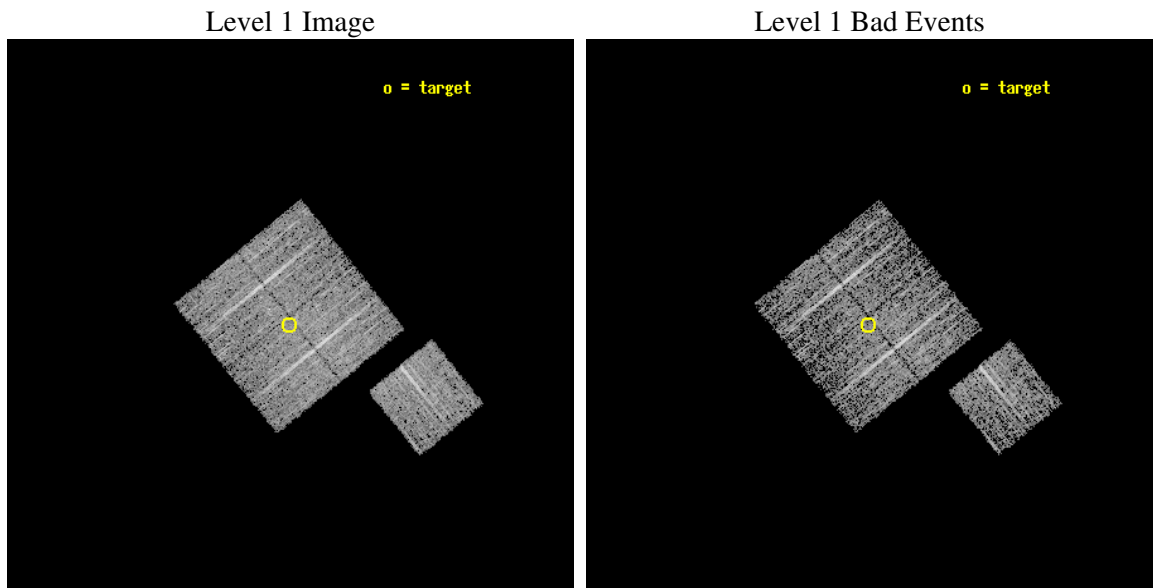
seq_num	900269
obs_id	4226
title	A CHANDRA WIDE-FIELD SURVEY TO MAP THE COSMIC WEB AND INVESTIGATE THE EVOLUTION OF NUCLEAR ACCRETION
observer	Dr. Christine Jones
object	SS13
dtcycle	0
cycle	P
ra_targ	216.527246
dec_targ	33.864306
ra_nom	216.52466617132
dec_nom	33.868430516965
roll_nom	141.01014543658
revision	2
ontime	4777.0999908149
livetime	4714.6836625851
ontime0	4777.0999908149
ontime1	4773.9590005875
ontime2	4777.0999908149
ontime3	4777.0999908149
ontime6	4777.0999908149
l2events	9918



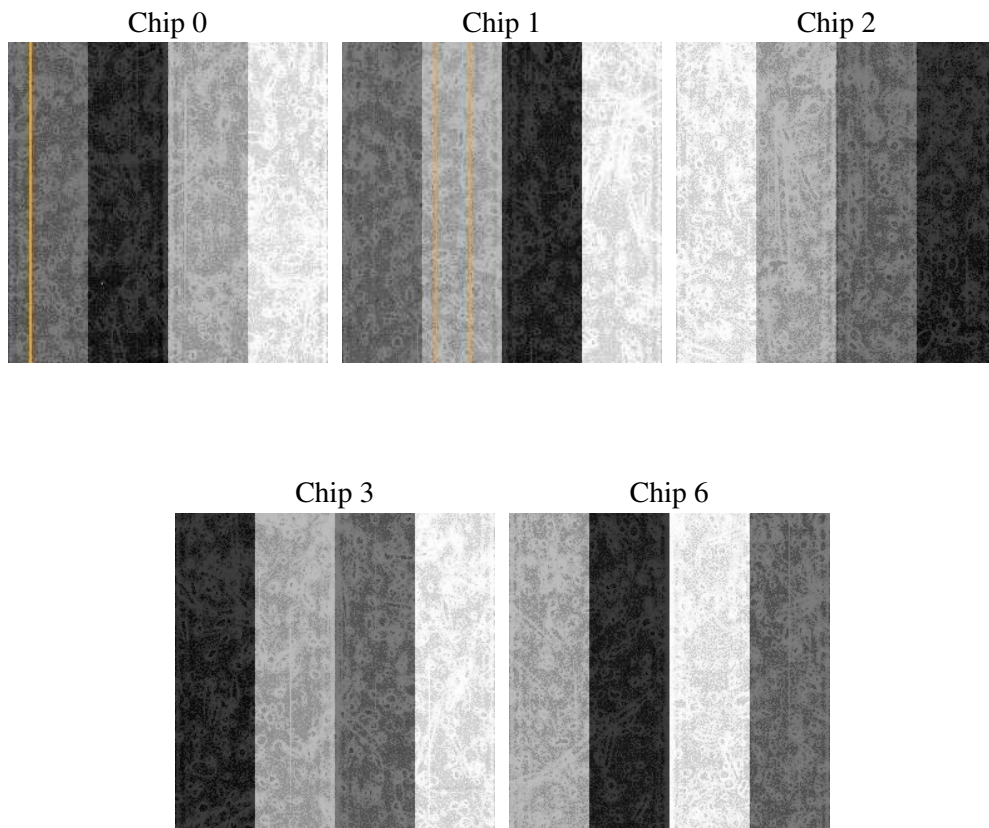
2 OBI

2.1 OBI

2.1.1 Images



2.1.2 Bias



2.1.3 Parameters

obi_num	0
ascdsver	7.6.8
caldbver	3.2.2
date	2006-07-29T16:18:26
revision	2

sched_exp_time	5000.000000
ontime	4780.6233013272
ontime0	4780.6233013272
ontime1	4777.4822912216
ontime2	4780.6233013272
ontime3	4780.6233013272
ontime6	4780.6233013272
llevents	121811

2.1.4 Events

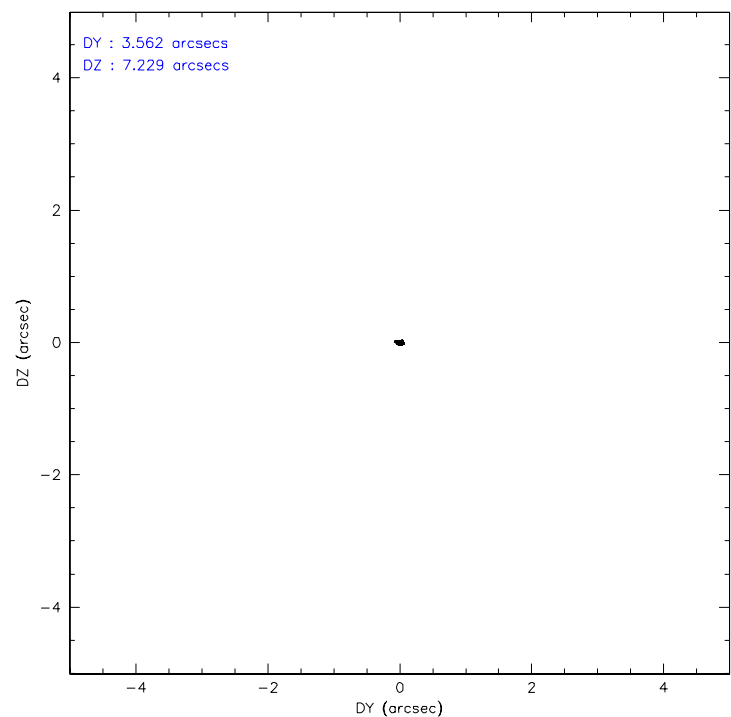
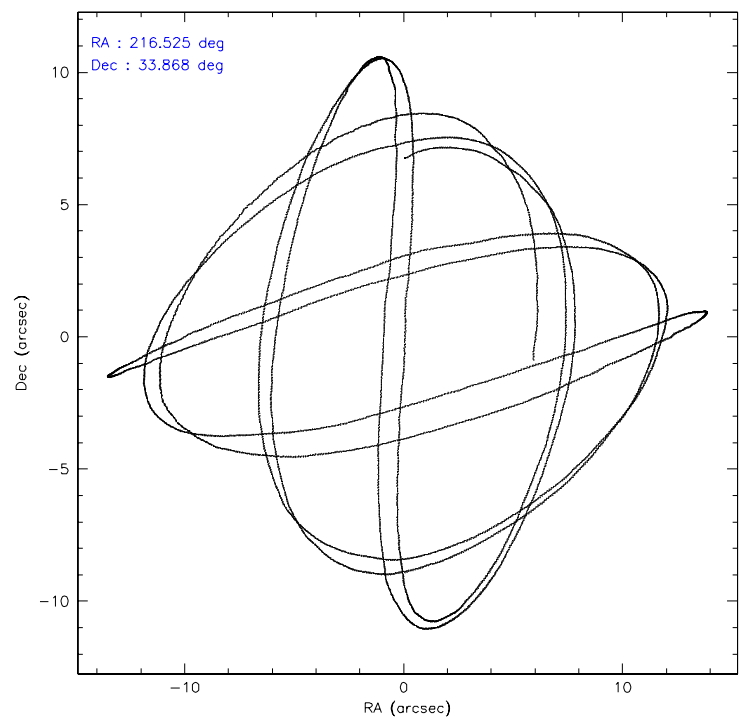
	ccd 0	ccd 1	ccd 2	ccd 3	ccd 6
level 1 events	23235	23426	26643	23630	24877
rejected events	20821	20759	24233	21449	22406
rejected %	89%	88%	90%	90%	90%

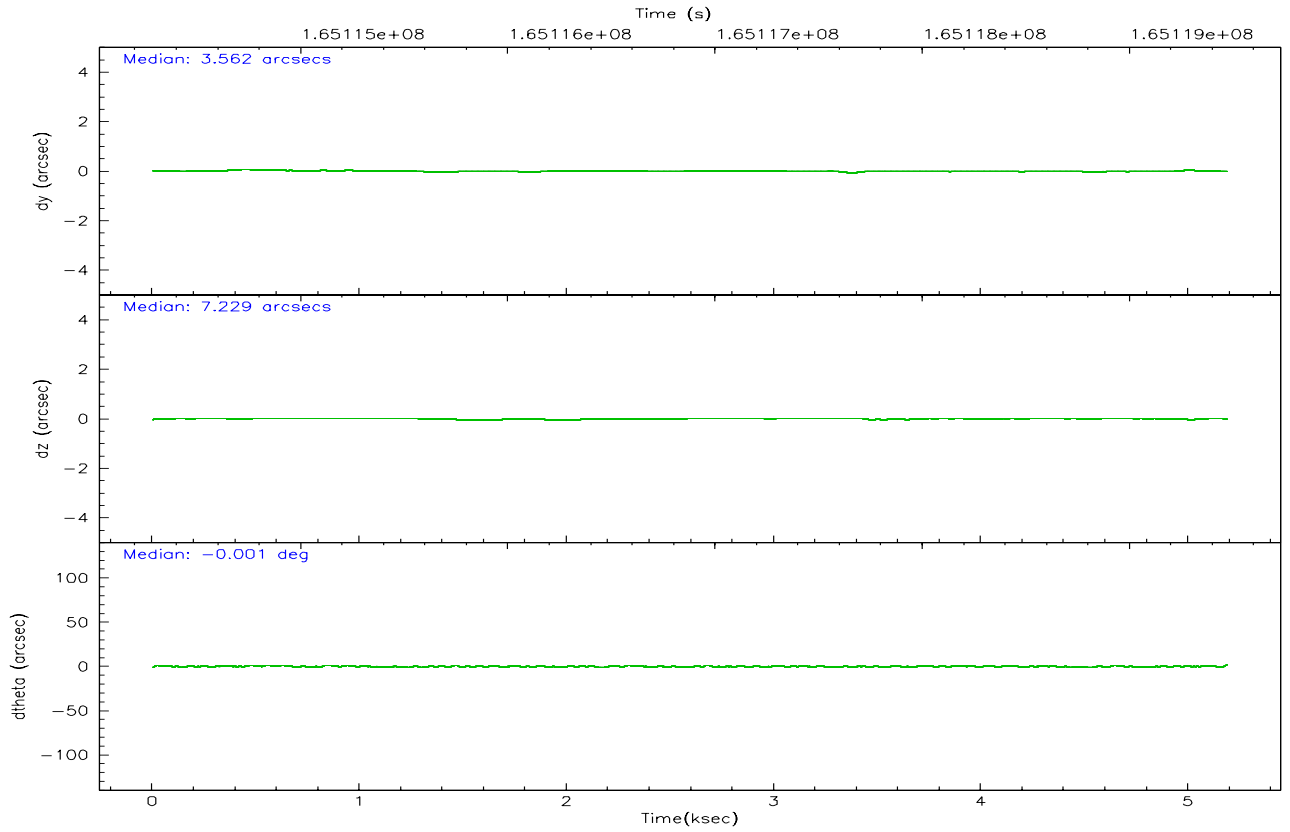
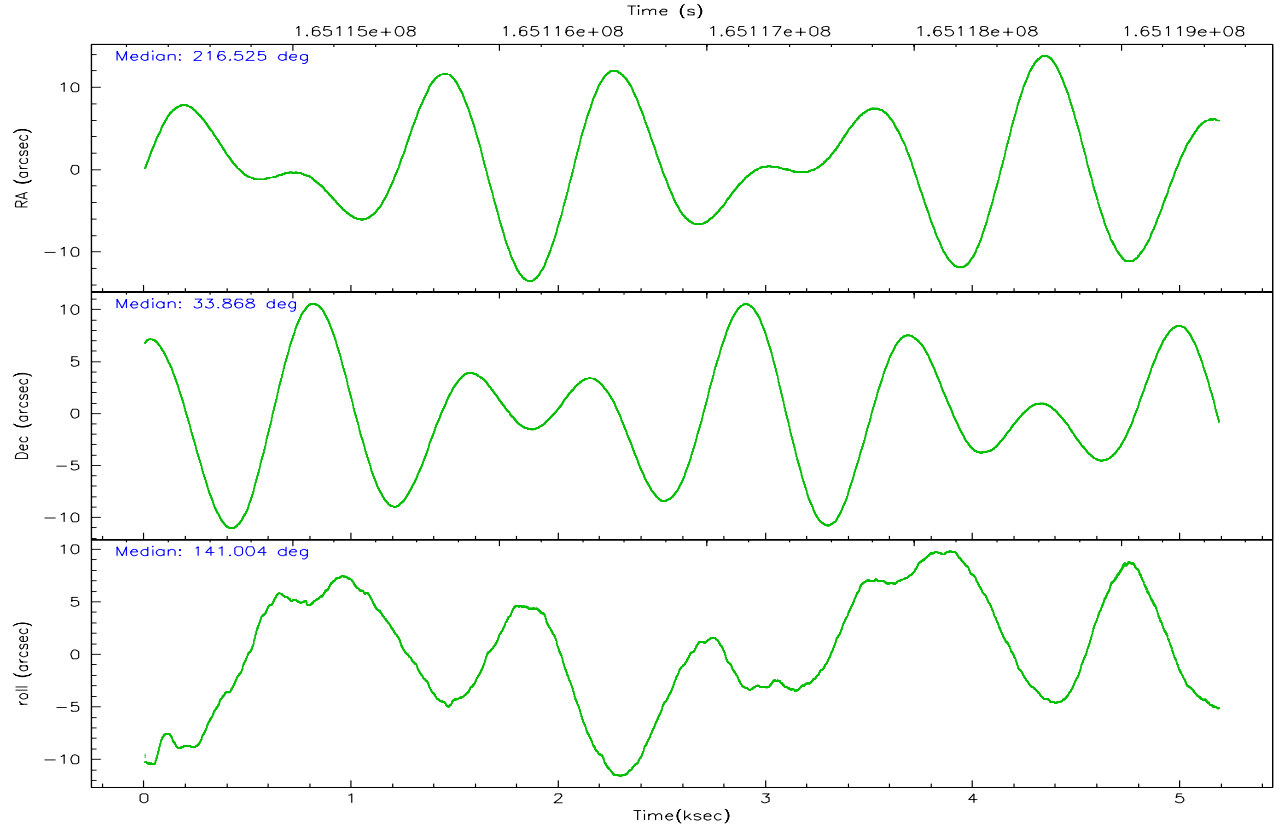
	ccd 0	ccd 1	ccd 2	ccd 3	ccd 6
grade 0 events	889	991	949	796	869
	3%	4%	3%	3%	3%
grade 1 events	10	14	12	14	12
	0%	0%	0%	0%	0%
grade 2 events	558	539	546	480	499
	2%	2%	2%	2%	2%
grade 3 events	268	321	268	268	305
	1%	1%	1%	1%	1%
grade 4 events	256	323	245	247	273
	1%	1%	0%	1%	1%
grade 5 events	761	763	627	786	774
	3%	3%	2%	3%	3%
grade 6 events	444	493	404	391	527
	1%	2%	1%	1%	2%
grade 7 events	20049	19982	23592	20648	21618
	86%	85%	88%	87%	86%

2.2 Compared Parameters

Parameter	Planned	Actual	Parameter	Planned	Actual
Instrument	ACIS	ACIS	Obspar format version number	6	6
Detector	ACIS-01236	ACIS-01236	Obspar file type	PREDICTED	ACTUAL
Grating	NONE	NONE	Obspar update status	NONE	UPDATED
Data mode	VFAINT	VFAINT	On-chip summing requested	N	N
Observation mode	POINTING	POINTING	Subarray requested	NONE	NONE
Pointing RA	216.557218	216.5246661713167	Alternating exposures requested	N	N
Pointing Dec	33.864229	33.86843051696462	Primary exposure time	0.000000	3.1
Pointing Roll	140.783296	141.0101454365805			
SIM focus pos (mm)	-0.782348	-0.7809083437167272			
SIM defocus (mm)	0	0.001439871863259334			
SIM translation stage pos (mm)	-233.592463	-233.5874344608287			
SIM translation stage offset (mm)	0	-0.005018542100998502			
Observation start time	165114479.184000	165114103.21329			
Observation start date	2003-03-27T01:06:55	2003-03-27T01:01:43			
Observation end time	165119479.184000	165119613.61352			
Observation end date	2003-03-27T02:30:15	2003-03-27T02:33:33			
Read mode	TIMED	TIMED			

2.3 Aspect



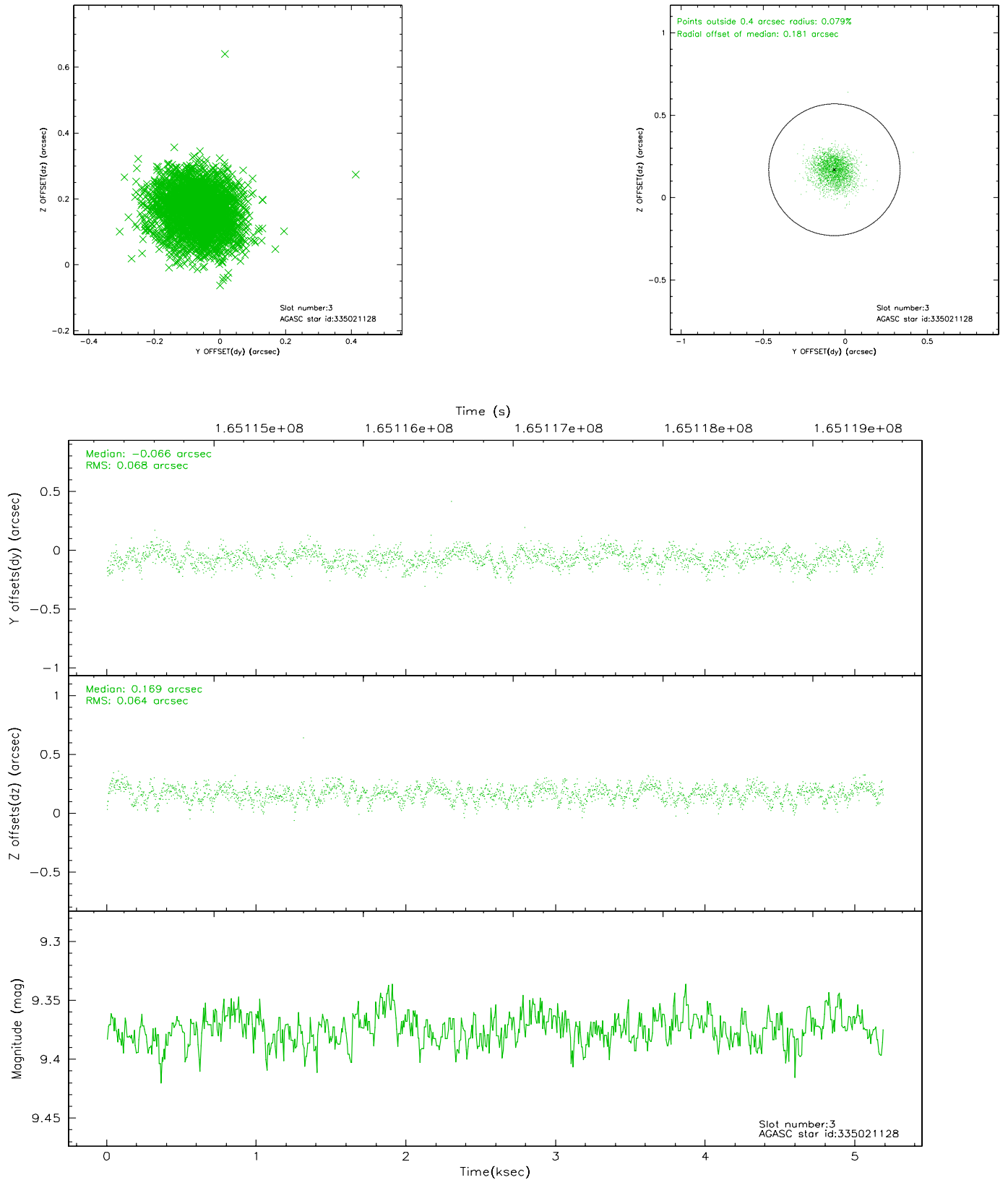


Slot Statistics

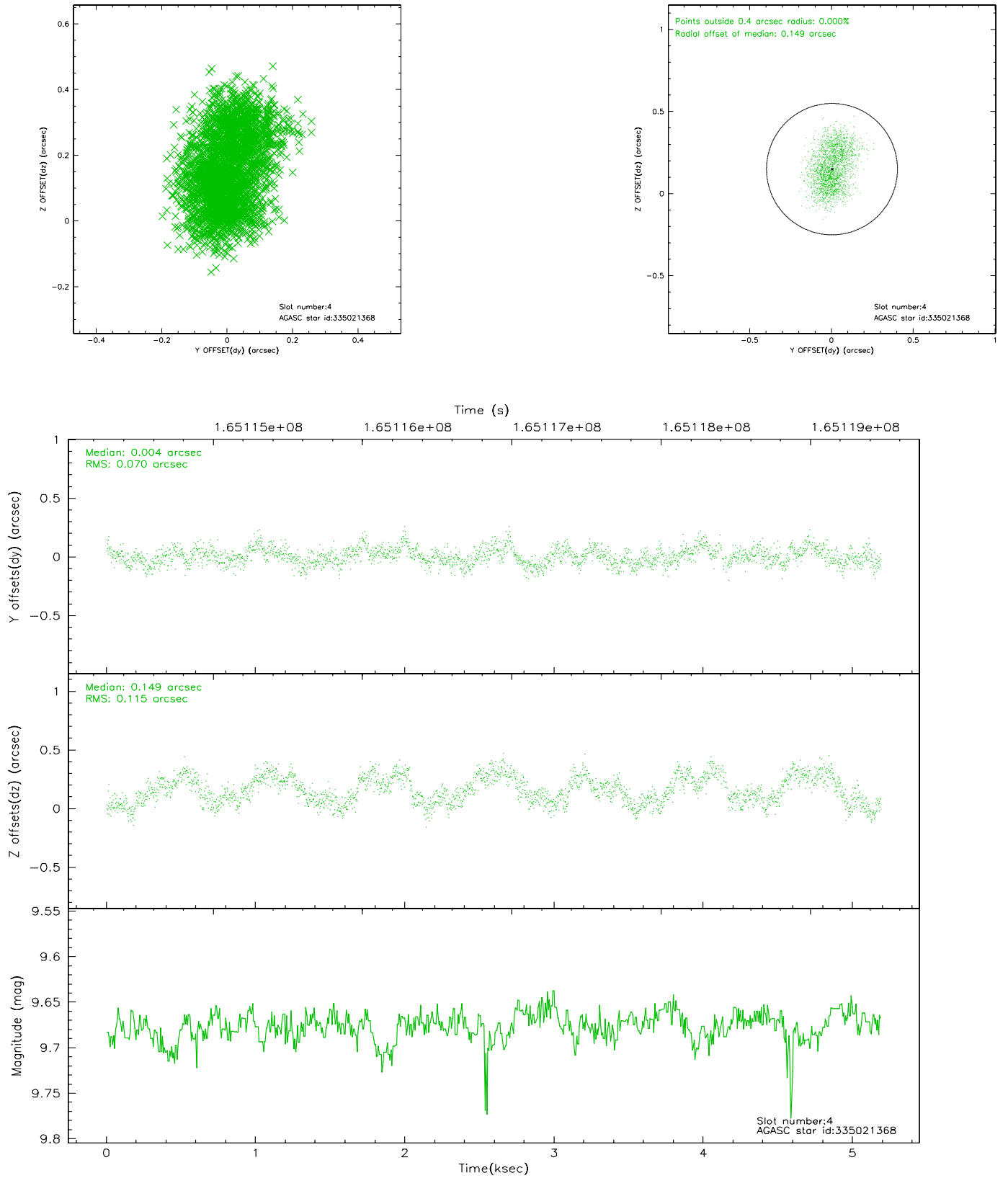
slot	status	id	mag	n_pts	med_dy	med_dz	dr1	dr2	ra	dec	mean_y	mean_z
0	FID	ACIS-I-1	7.25	1264	0.003	0.042	0.006	0.011	0.000000	0.000000	936.21	-830.60
1	FID	ACIS-I-5	7.24	1264	-0.069	0.056	0.006	0.010	0.000000	0.000000	-1811.29	1066.37
2	FID	ACIS-I-6	7.26	1264	-0.025	-0.027	0.007	0.012	0.000000	0.000000	400.49	1712.08
3	GUIDE	335021128	9.37	2528	-0.066	0.169	0.099	0.158	216.159551	34.422539	2187.40	-811.49
4	GUIDE	335021368	9.68	2499	0.004	0.149	0.148	0.227	217.529643	33.934817	-2079.64	-2043.79
5	GUIDE	335028696	9.19	2526	0.106	0.148	0.097	0.153	217.260519	33.844112	-1670.86	-1279.40
6	GUIDE	335029808	9.06	2530	0.044	-0.143	0.093	0.151	216.789548	33.180488	-2098.68	1463.49
7	GUIDE	334103232	8.70	2527	-0.079	-0.322	0.089	0.138	215.850271	33.571936	981.26	2151.15

2.4 Star Slots

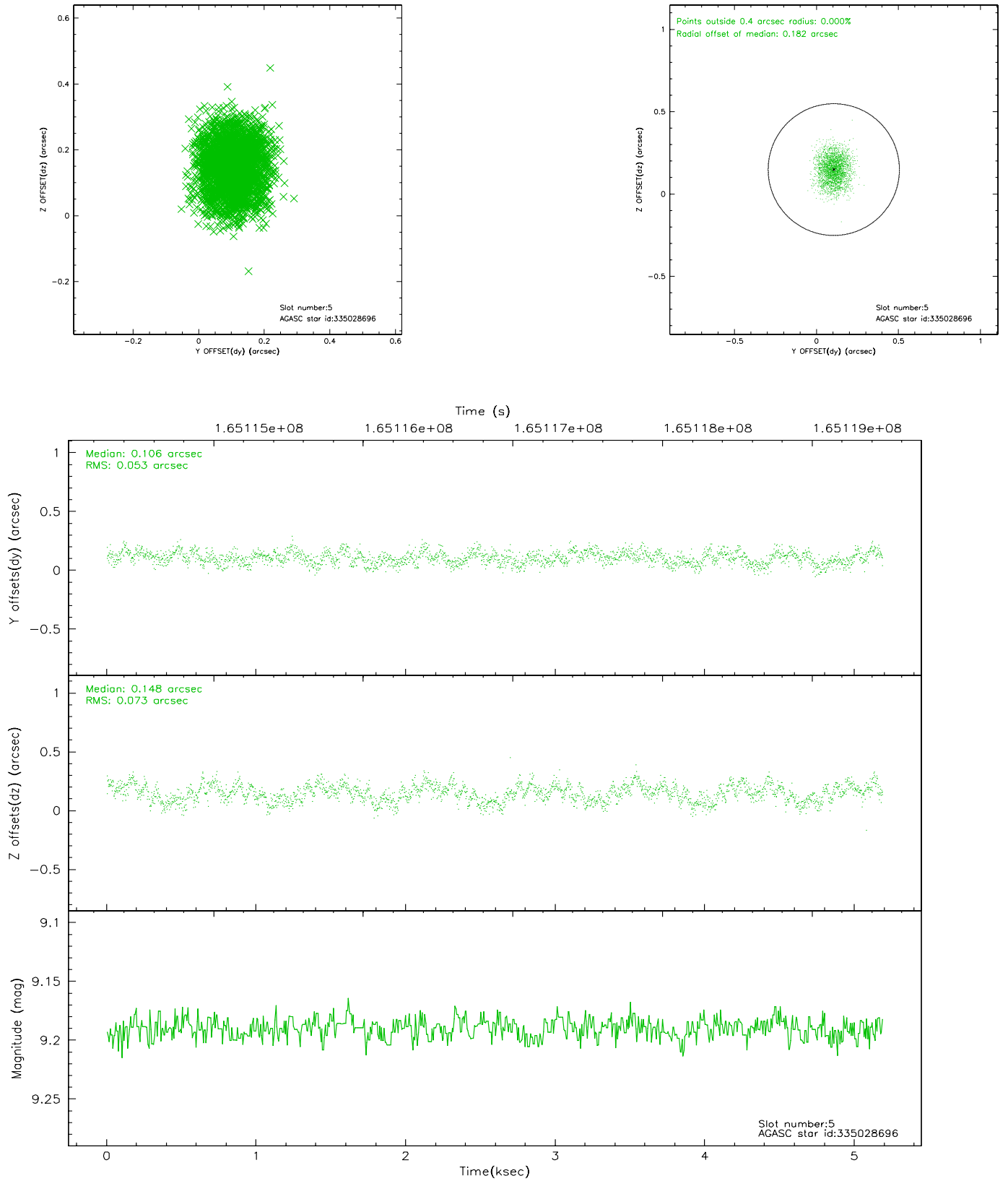
2.4.1 Slot 3



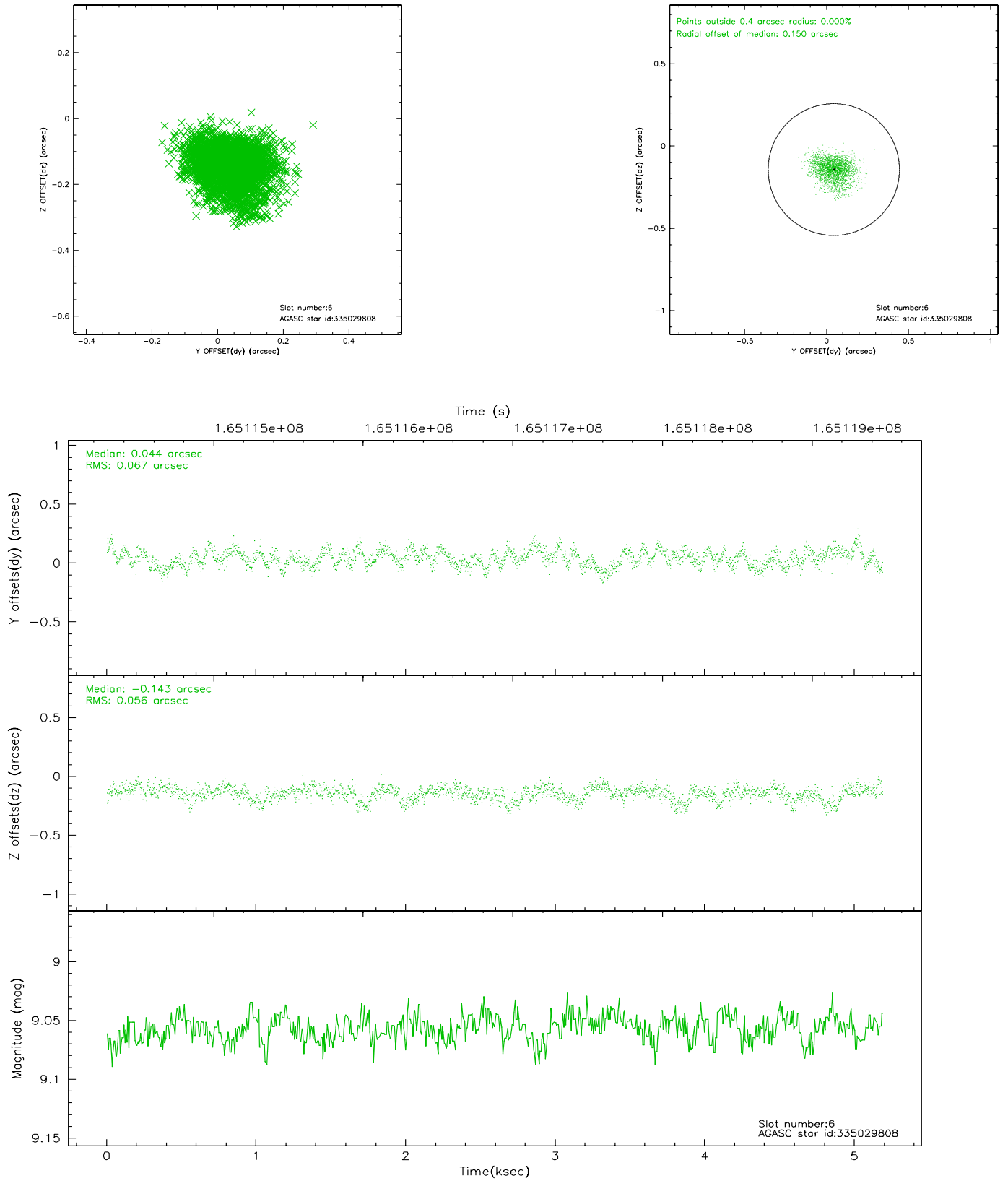
2.4.2 Slot 4



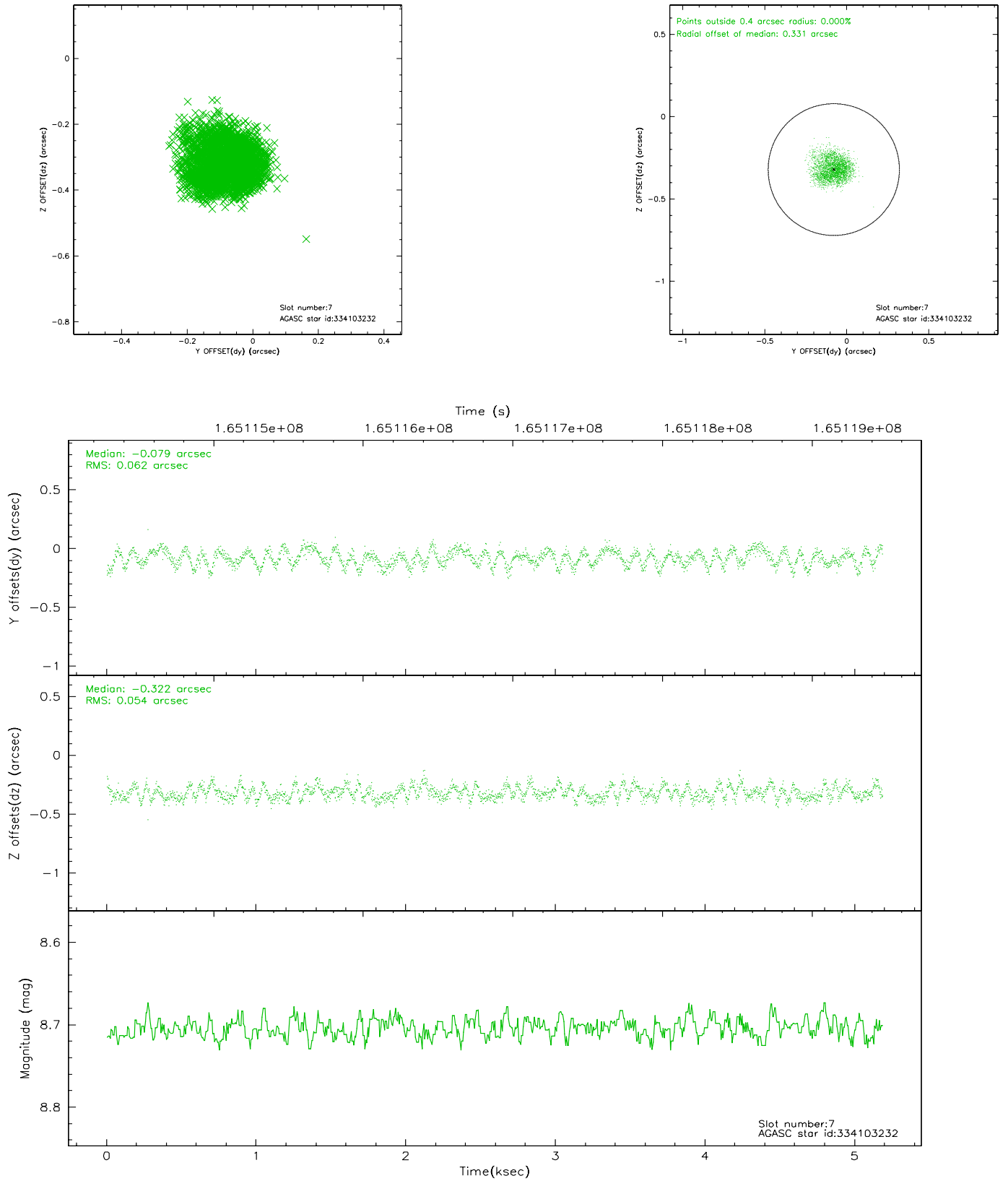
2.4.3 Slot 5



2.4.4 Slot 6

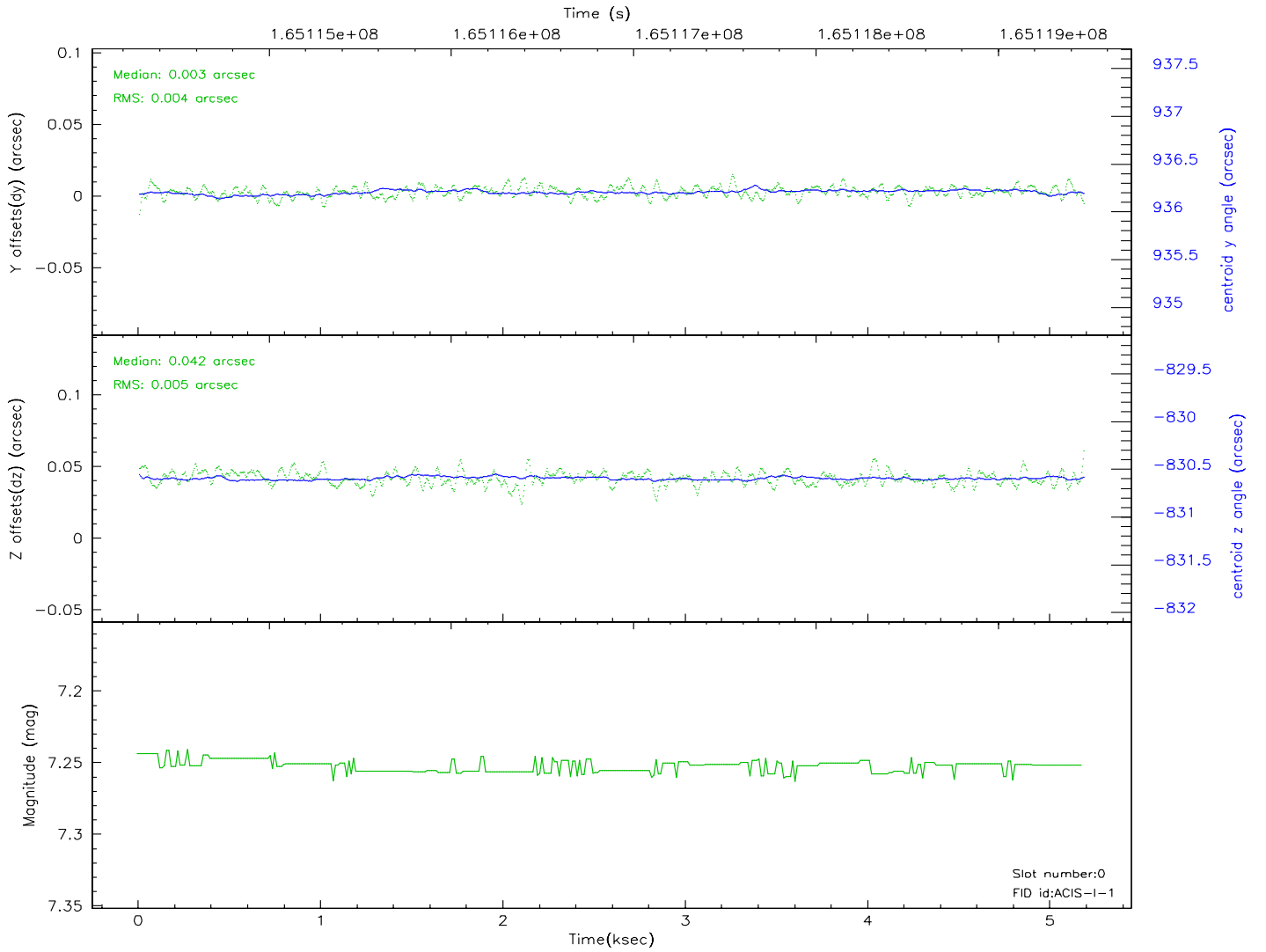
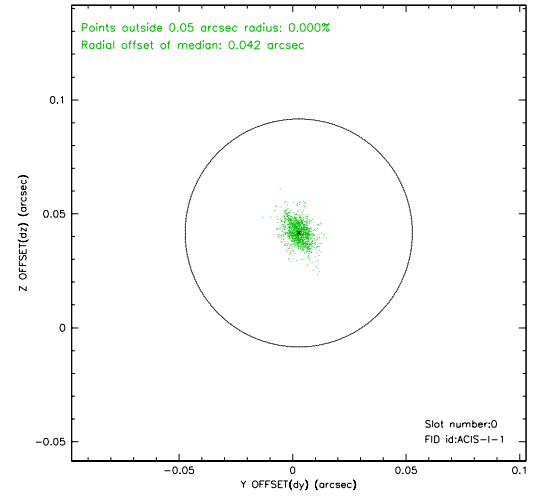
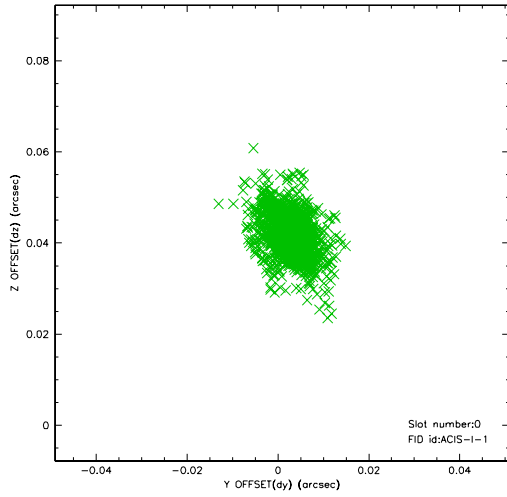


2.4.5 Slot 7

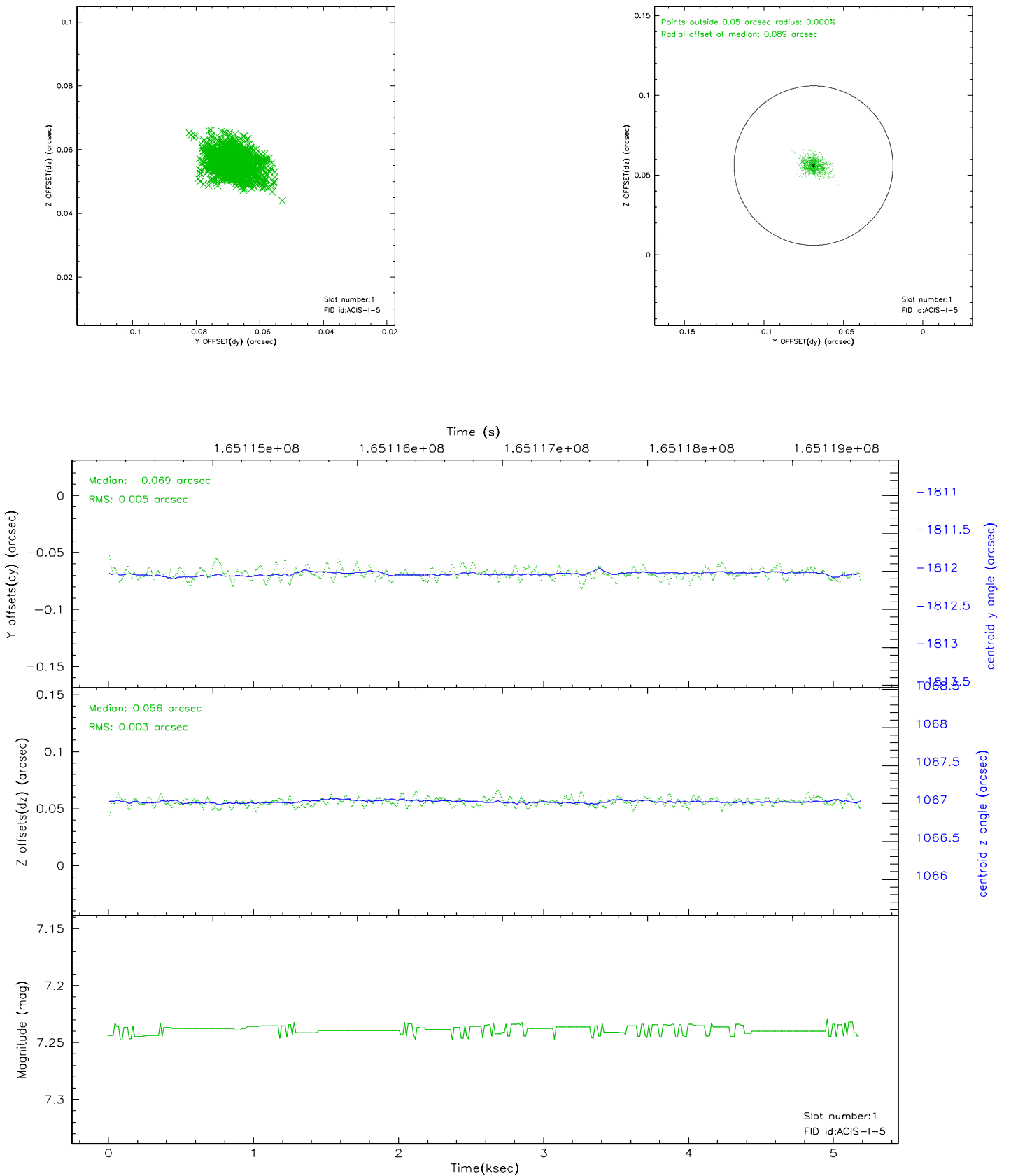


2.5 FID Slots

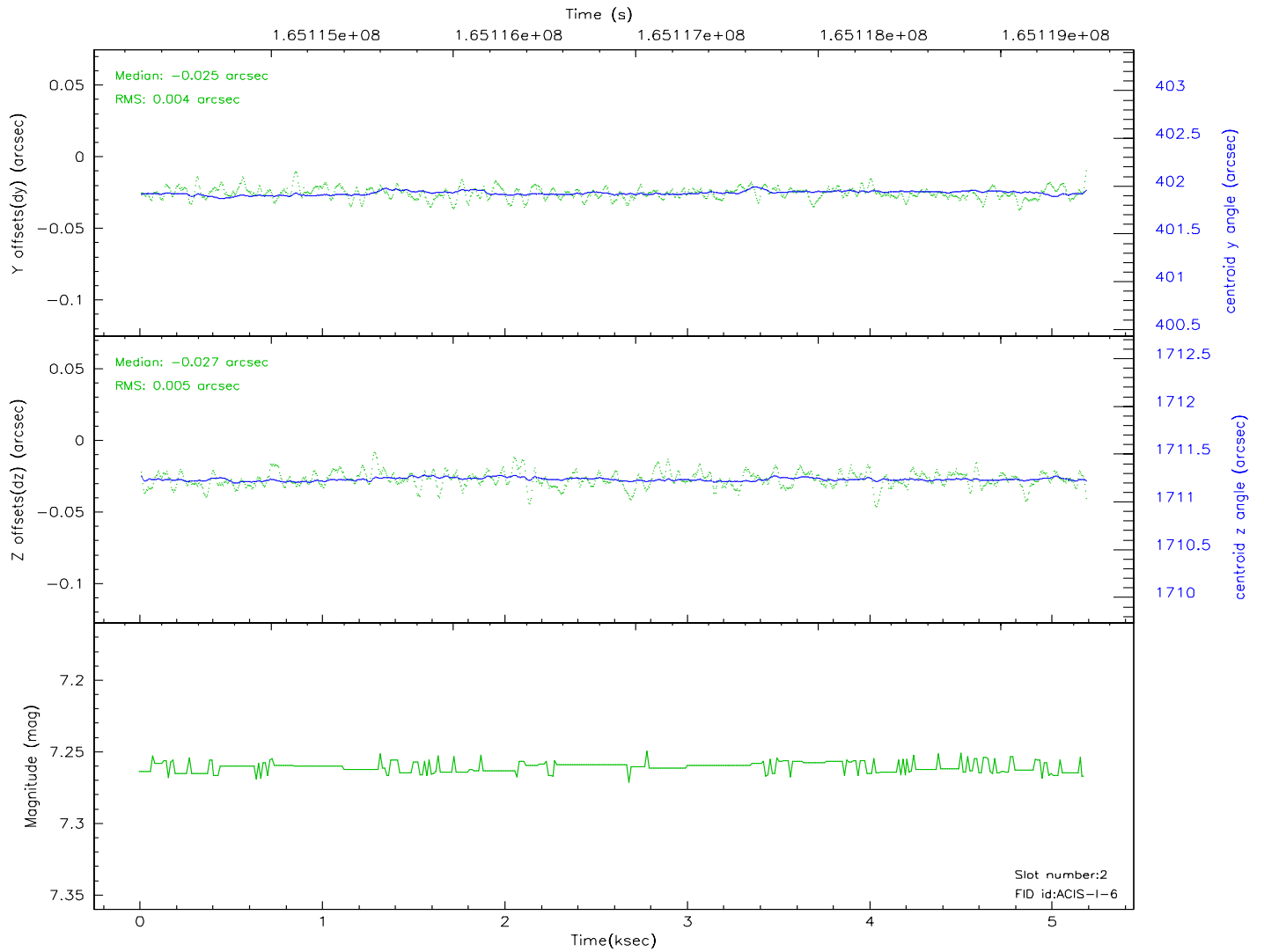
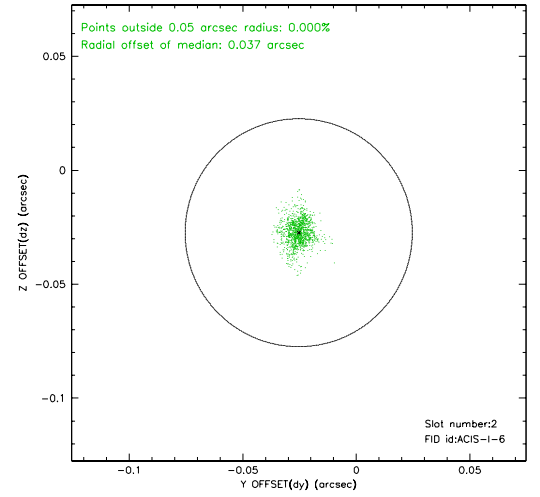
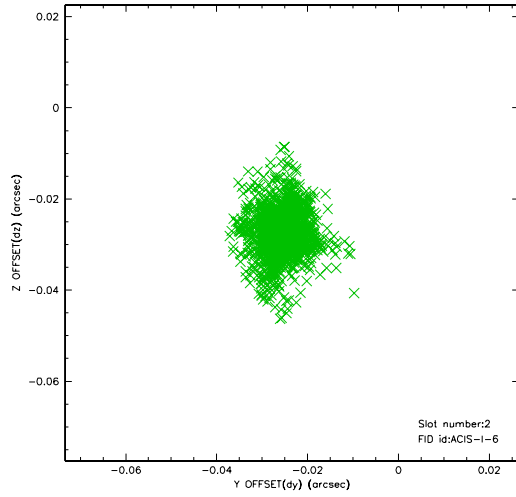
2.5.1 Slot 0



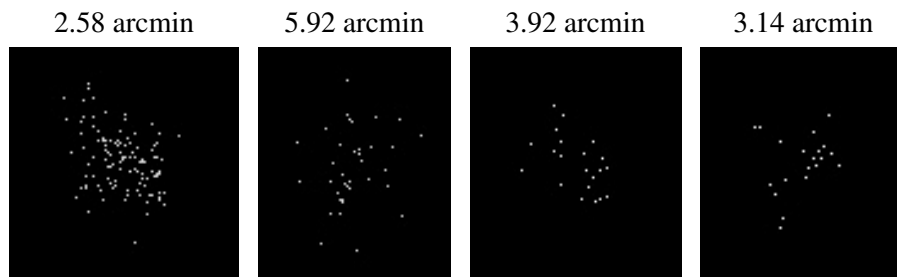
2.5.2 Slot 1



2.5.3 Slot 2



3 Point Sources



A Summary

A.1 Status

V&V Scientist	Jen Lauer
V&V Date (YYYY-MM-DD)	2006.07.30
V&V Edition	1
V&V Disposition and Status	OK
V&V Charge Time	4.777

A.2 Comments