

V&V Reference Report

L2 ASCDS Version : 8.4.5

Observation 4223 - L2 Version 5
Chandra X-Ray Center

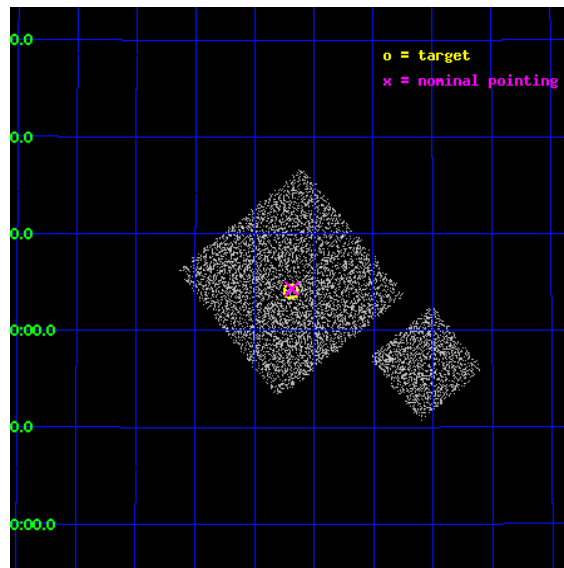
L2 Processing Date : Jan 4 2013

Contents

1	Front	2
2	OBI	3
2.1	OBI	3
2.1.1	Images	3
2.1.2	Bias	3
2.1.3	Parameters	4
2.1.4	Events	4
2.2	Compared Parameters	5
2.3	Aspect	6
2.4	Star Slots	9
2.4.1	Slot 3	9
2.4.2	Slot 4	10
2.4.3	Slot 5	11
2.4.4	Slot 6	12
2.4.5	Slot 7	13
2.5	FID Slots	14
2.5.1	Slot 0	14
2.5.2	Slot 1	15
A	Summary	16
A.1	Status	16
A.2	Comments	16

1 Front

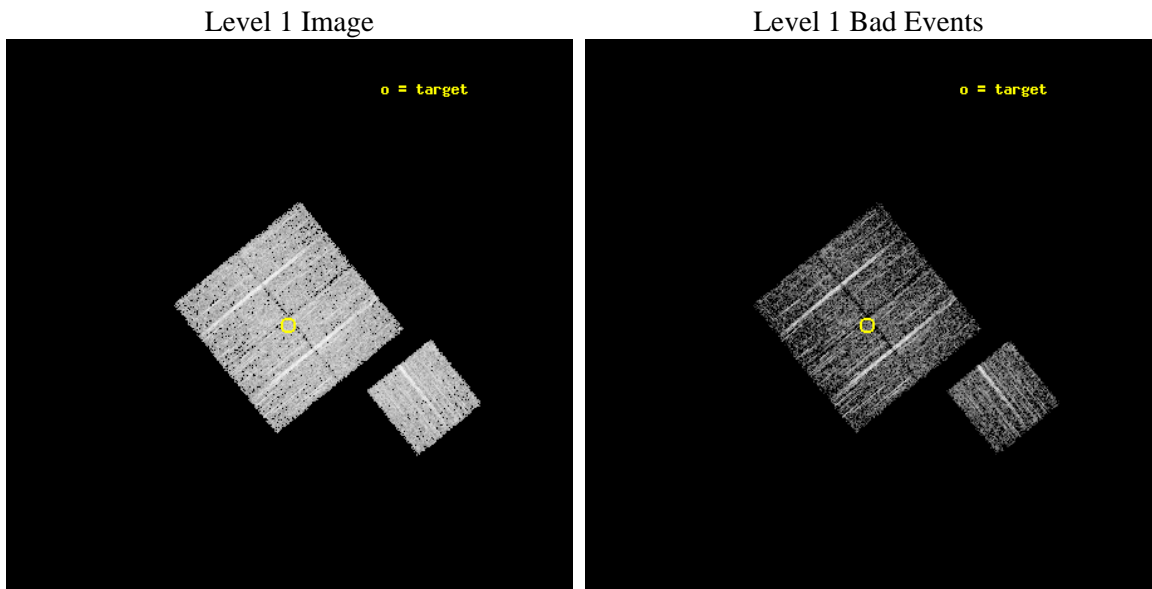
seq_num	900266	Sequence number
obs_id	4223	Observation id
title	A CHANDRA WIDE-FIELD SURVEY TO MAP THE COSMIC WEB AND INVESTIGATE THE EVOLUTION OF NUCLEAR ACCRETION	Proposal title
observer	Dr. Christine Jones	Principal investigator
object	SS46	Source name
dtcycle	0	
cycle	P	events from which exps? Prim/Second/Both
ra_targ	217.17418	Observer's specified target RA [deg]
dec_targ	34.068	Observer's specified target Dec [deg]
ra_nom	217.17154642223	Nominal RA [deg]
dec_nom	34.072068812659	Nominal Dec [deg]
roll_nom	141.01016026198	Nominal Roll [deg]
revision	5	Processing version of data
ontime	4575.1889451742	Sum of GTIs [s]
livetime	4515.4107334004	Livetime [s]
ontime0	4575.0658251643	Sum of GTIs [s]
ontime1	4575.1068651676	Sum of GTIs [s]
ontime2	4575.1479051709	Sum of GTIs [s]
ontime3	4575.1889451742	Sum of GTIs [s]
ontime6	4575.024785161	Sum of GTIs [s]
l2events	9109	Number of level 2 events



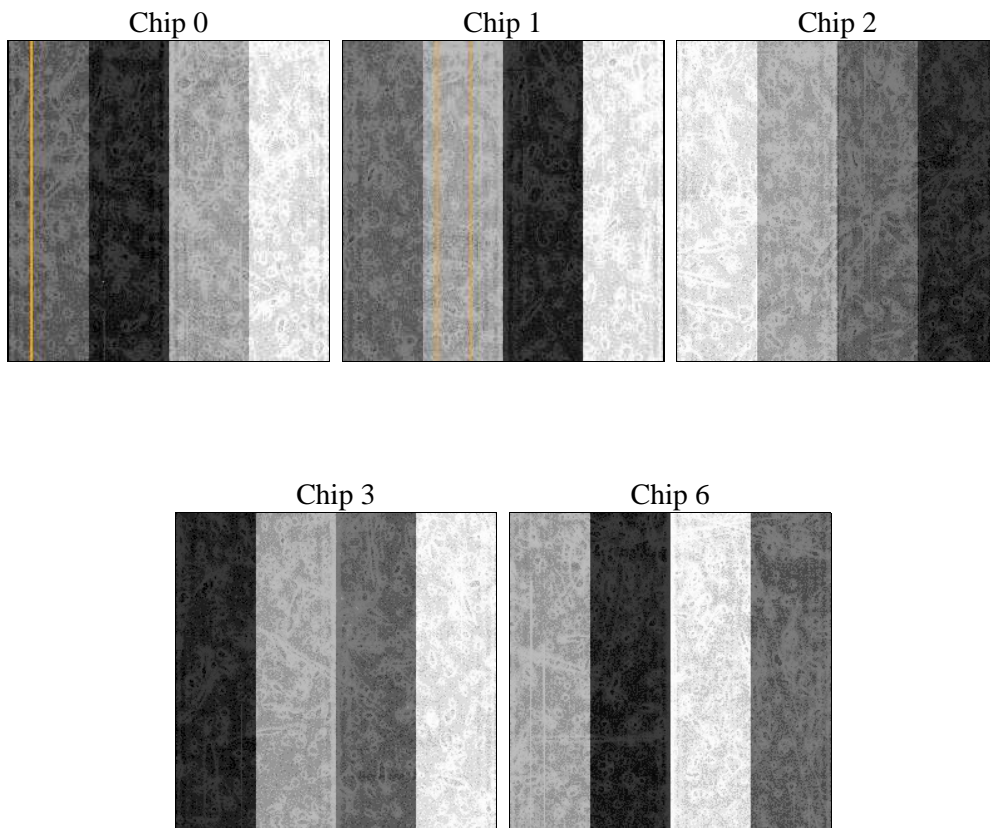
2 OBI

2.1 OBI

2.1.1 Images



2.1.2 Bias



2.1.3 Parameters

obi_num	1	Obi number	sched_exp_time	4800.000000	[s] Scheduled observation exposure time
ascdsver	8.5.1.1	Processing system revision	ontime	4575.1889451742	Sum of GTIs [s]
caldsver	4.5.5	 	ontime0	4575.0658251643	Sum of GTIs [s]
date	2013-01-04T19:55:45	Date and time of file creation	ontime1	4575.1068651676	Sum of GTIs [s]
revision	5	Processing version of data	ontime2	4575.1479051709	Sum of GTIs [s]
			ontime3	4575.1889451742	Sum of GTIs [s]
			ontime6	4575.024785161	Sum of GTIs [s]
			l1events	115185	Number of level 1 events

2.1.4 Events

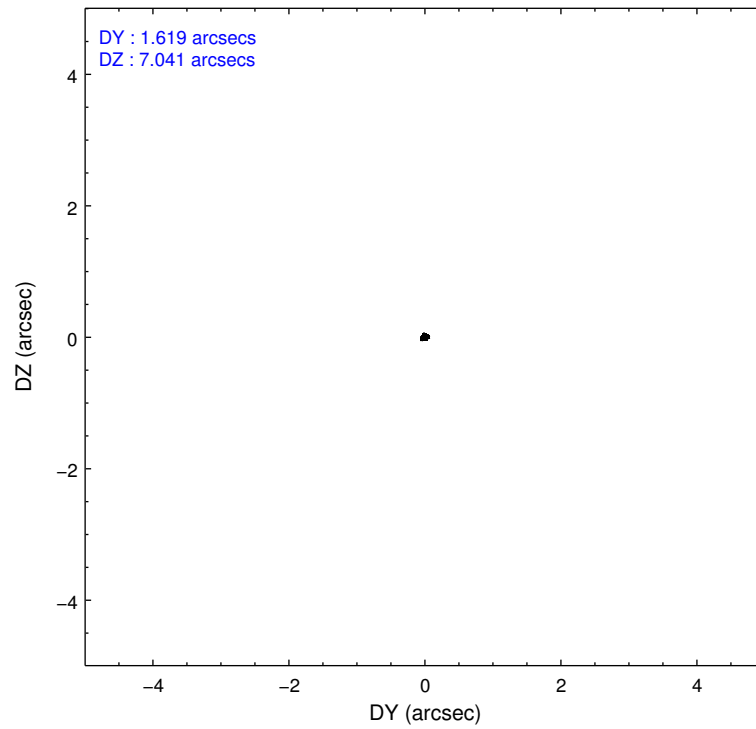
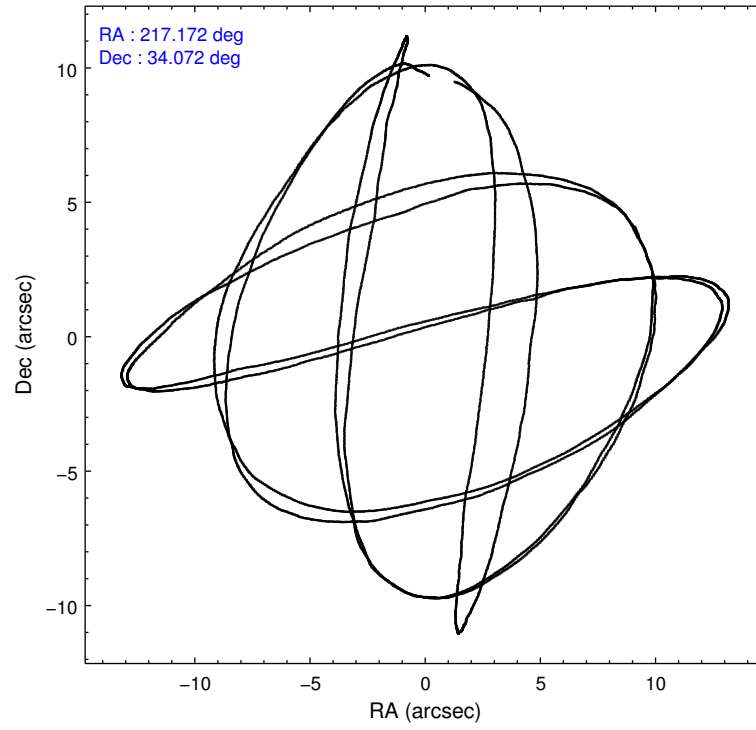
	ccd 0	ccd 1	ccd 2	ccd 3	ccd 6
level 1 events	20803	21971	23983	24895	23533
rejected events	18725	19557	21664	22744	21286
rejected %	90%	89%	90%	91%	90%

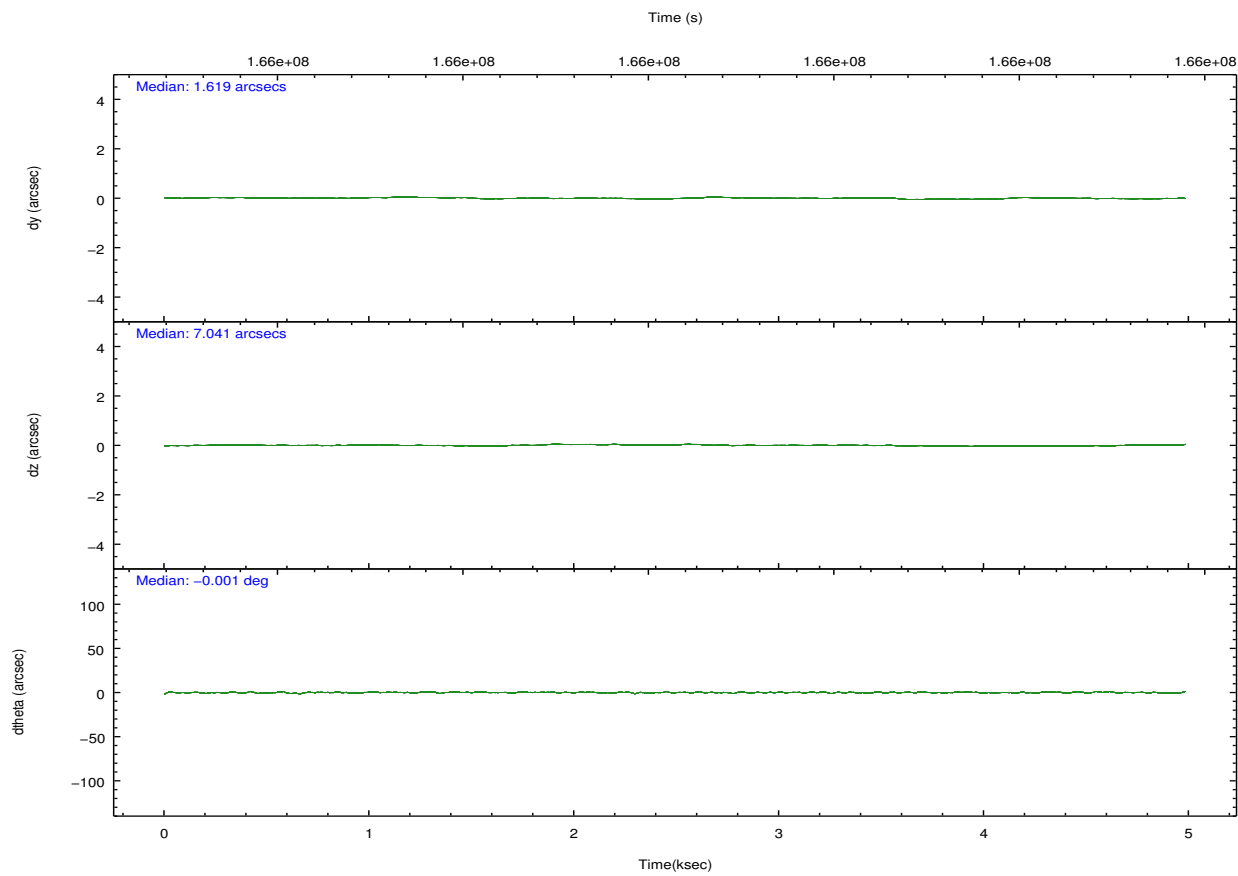
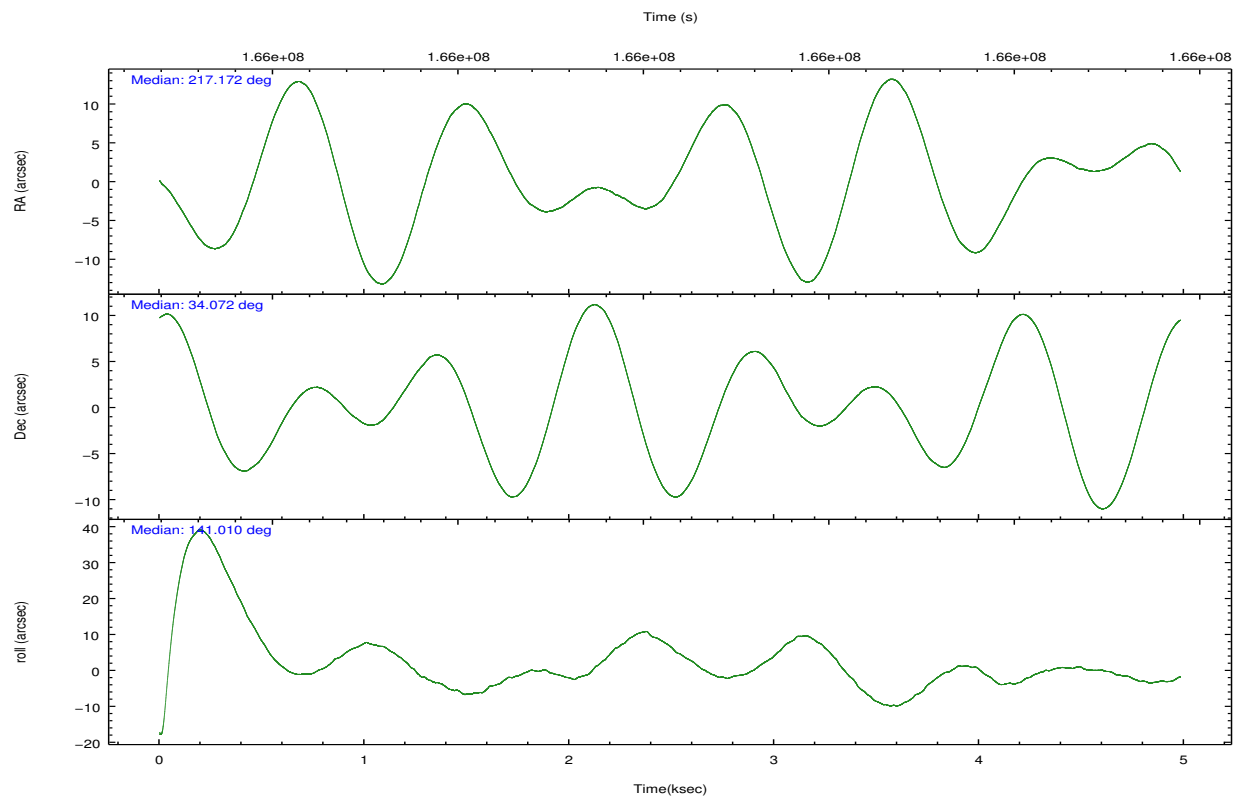
	ccd 0	ccd 1	ccd 2	ccd 3	ccd 6
grade 0 events	763	846	855	842	808
	3%	3%	3%	3%	3%
grade 1 events	14	8	10	12	12
	0%	0%	0%	0%	0%
grade 2 events	455	455	525	439	484
	2%	2%	2%	1%	2%
grade 3 events	243	318	260	238	268
	1%	1%	1%	0%	1%
grade 4 events	258	298	255	218	233
	1%	1%	1%	0%	0%
grade 5 events	646	707	616	750	736
	3%	3%	2%	3%	3%
grade 6 events	362	499	427	418	459
	1%	2%	1%	1%	1%
grade 7 events	18062	18840	21035	21978	20533
	86%	85%	87%	88%	87%

2.2 Compared Parameters

Parameter	Planned	Actual	Parameter	Planned	Actual
Instrument	ACIS	ACIS	Obspar format version number	7	7
Detector	ACIS-01236	ACIS-01236	Obspar file type	PREDICTED	ACTUAL
Grating	NONE	NONE	Obspar update status	NONE	UPDATED
Data mode	VFAINT	VFAINT	Number of optional ACIS chips dropped	0	0
Observation mode	POINTING	POINTING	On-chip summing requested	N	N
[deg] Pointing RA	217.204218	217.1715464222271	Subarray requested	NONE	NONE
[deg] Pointing Dec	34.067920	34.07206881265853	Alternating exposures requested	N	N
[deg] Pointing Roll	140.783173	141.0101602619824	[s] Primary exposure time	0.000000	3.1
[mm] SIM focus pos	-0.782348	-0.7809083437167272			
[mm] SIM defocus	0	0.001439871863259334			
[mm] SIM translation stage pos	-233.592463	-233.5874344608287			
[mm] SIM translation stage offset	0	-0.005018542100998502			
[s] Observation start time (MET)	165999835.184000	165999459.30063			
Observation start date	2003-04-06T07:02:51	2003-04-06T06:57:39			
[s] Observation end time (MET)	166004635.184000	166004769.31335			
Observation end date	2003-04-06T08:22:51	2003-04-06T08:26:09			
Read mode	TIMED	TIMED			

2.3 Aspect



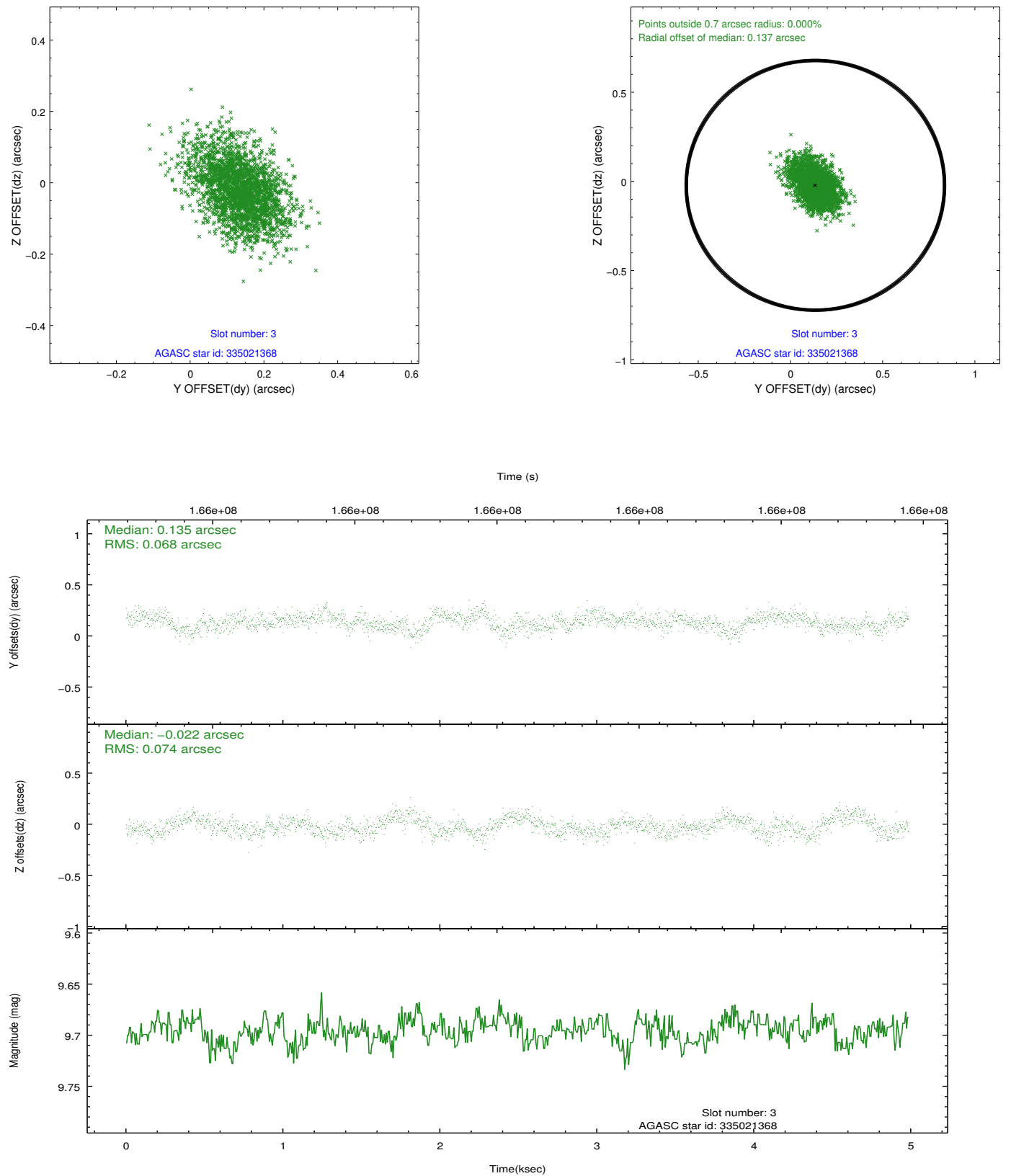


Slot Statistics

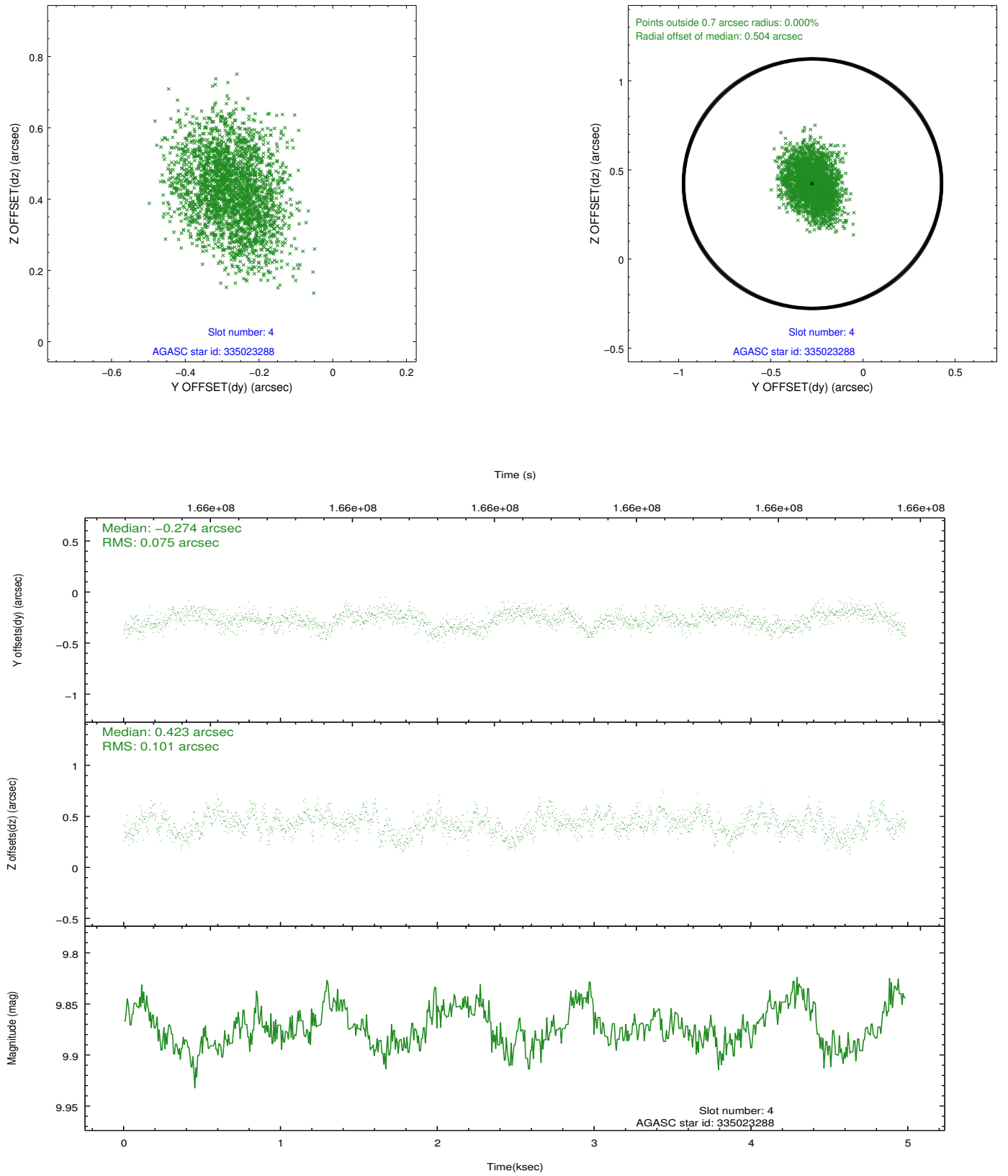
slot	status	id	mag	n_pts	med_dy	med_dz	dr1	dr2	ra	dec	mean_y	mean_z
0	FID	ACIS-I-1	7.25	1216	0.007	-0.001	0.004	0.009	0.000000	0.000000	938.20	-830.45
1	FID	ACIS-I-5	7.24	1216	-0.068	0.051	0.004	0.009	0.000000	0.000000	-1809.26	1066.54
2	OMITTED		0.00	0	0.000	0.000	0.000	0.000	0.000000	0.000000	0.00	0.00
3	GUIDE	335021368	9.70	2432	0.135	-0.022	0.105	0.174	217.529643	33.934817	-1054.34	-244.27
4	GUIDE	335023288	9.87	2431	-0.274	0.423	0.137	0.217	217.791365	34.425735	-533.39	-2103.67
5	GUIDE	335025848	9.72	2428	0.051	-0.370	0.104	0.172	217.530531	33.778292	-1414.33	188.27
6	GUIDE	335028696	9.16	2430	0.109	-0.120	0.074	0.125	217.260519	33.844112	-639.72	517.97
7	GUIDE	335030384	8.86	2431	-0.021	0.099	0.102	0.166	216.806407	34.722197	2402.95	-1081.93

2.4 Star Slots

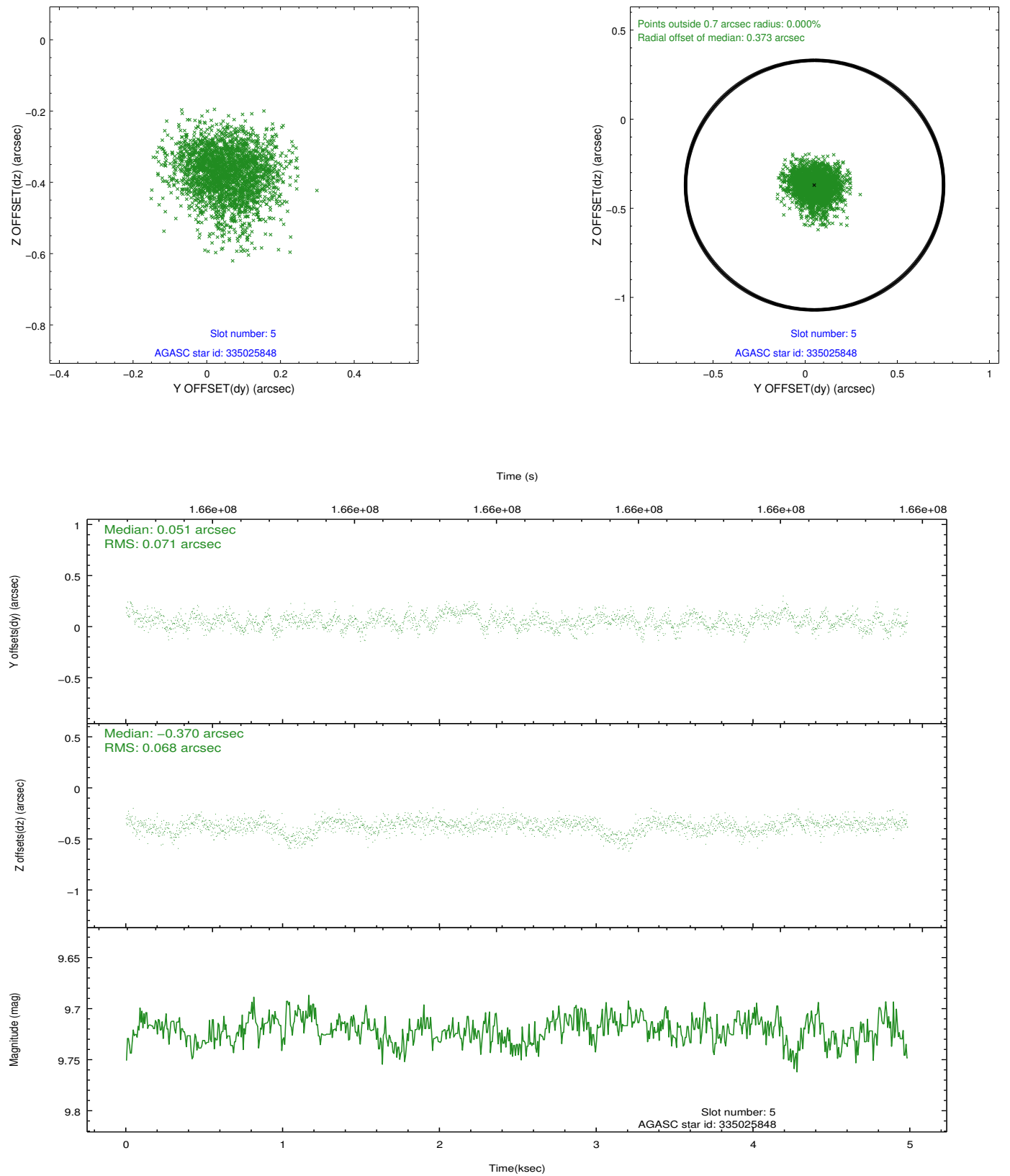
2.4.1 Slot 3



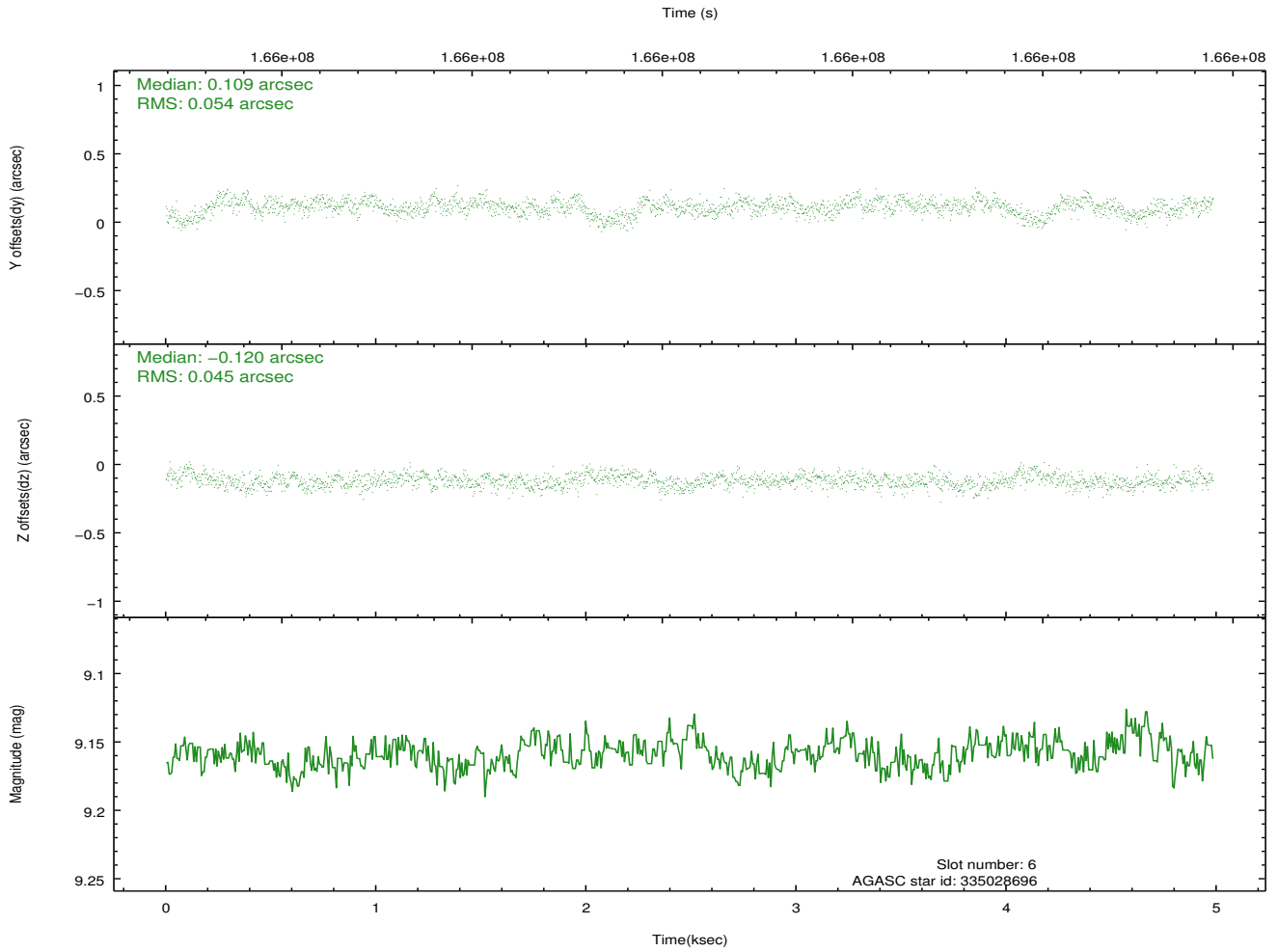
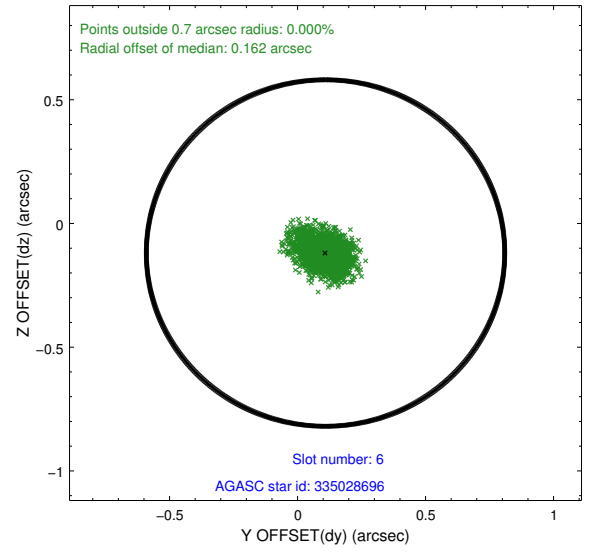
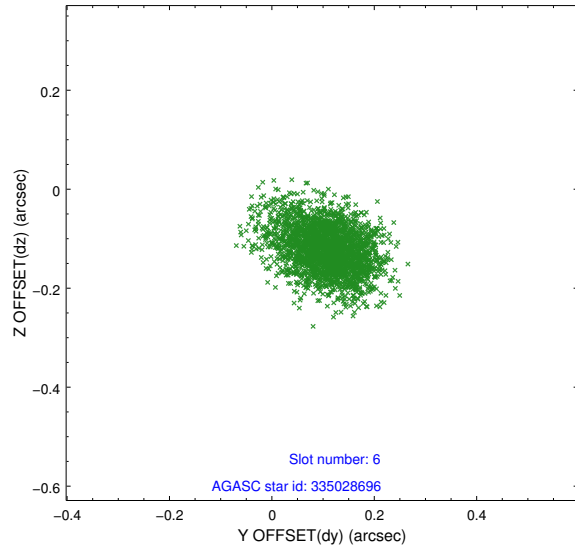
2.4.2 Slot 4



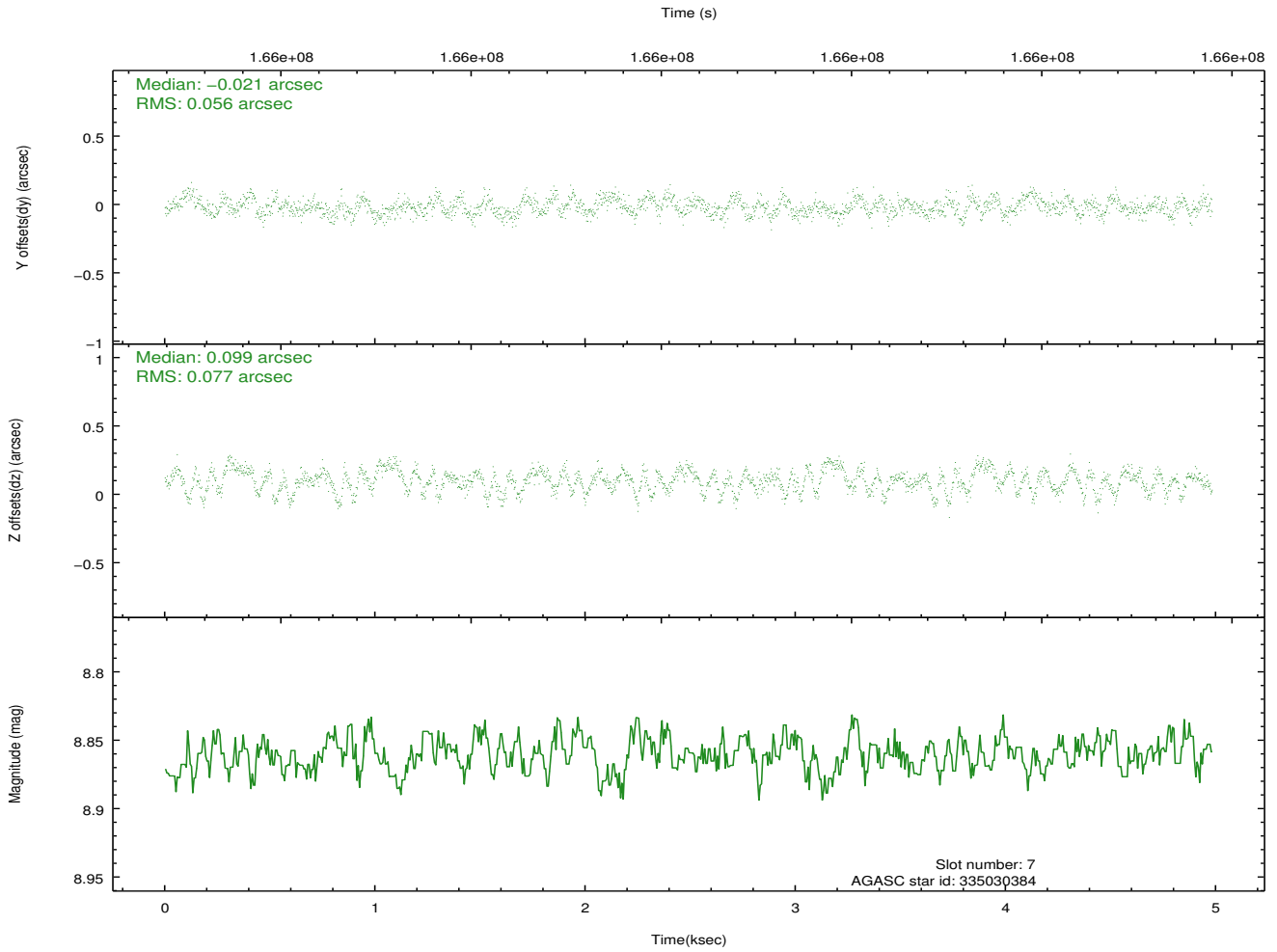
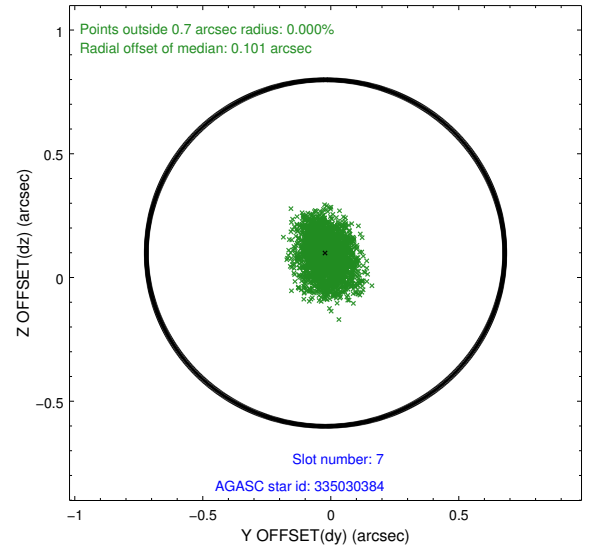
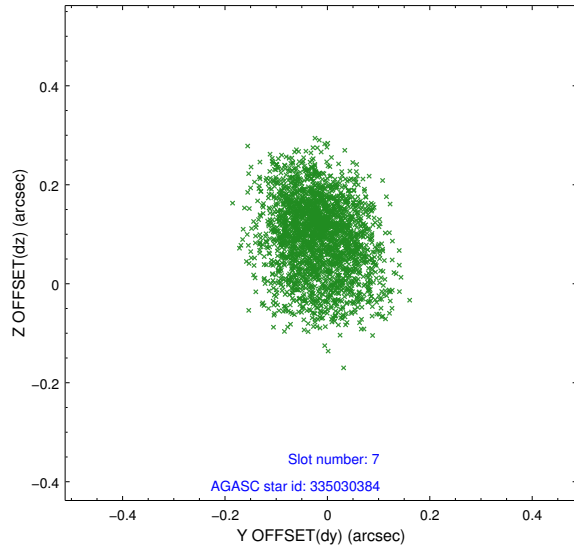
2.4.3 Slot 5



2.4.4 Slot 6

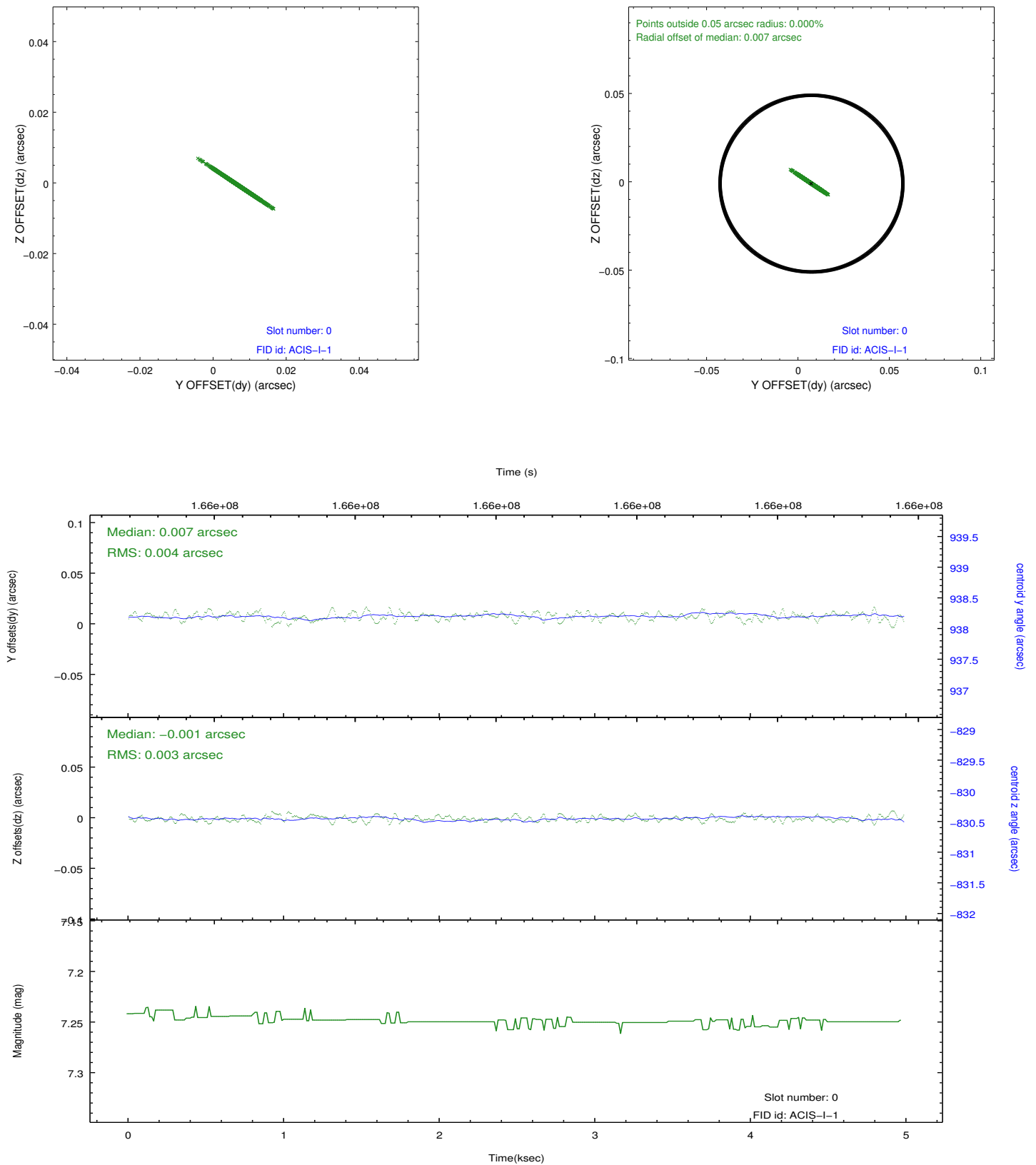


2.4.5 Slot 7

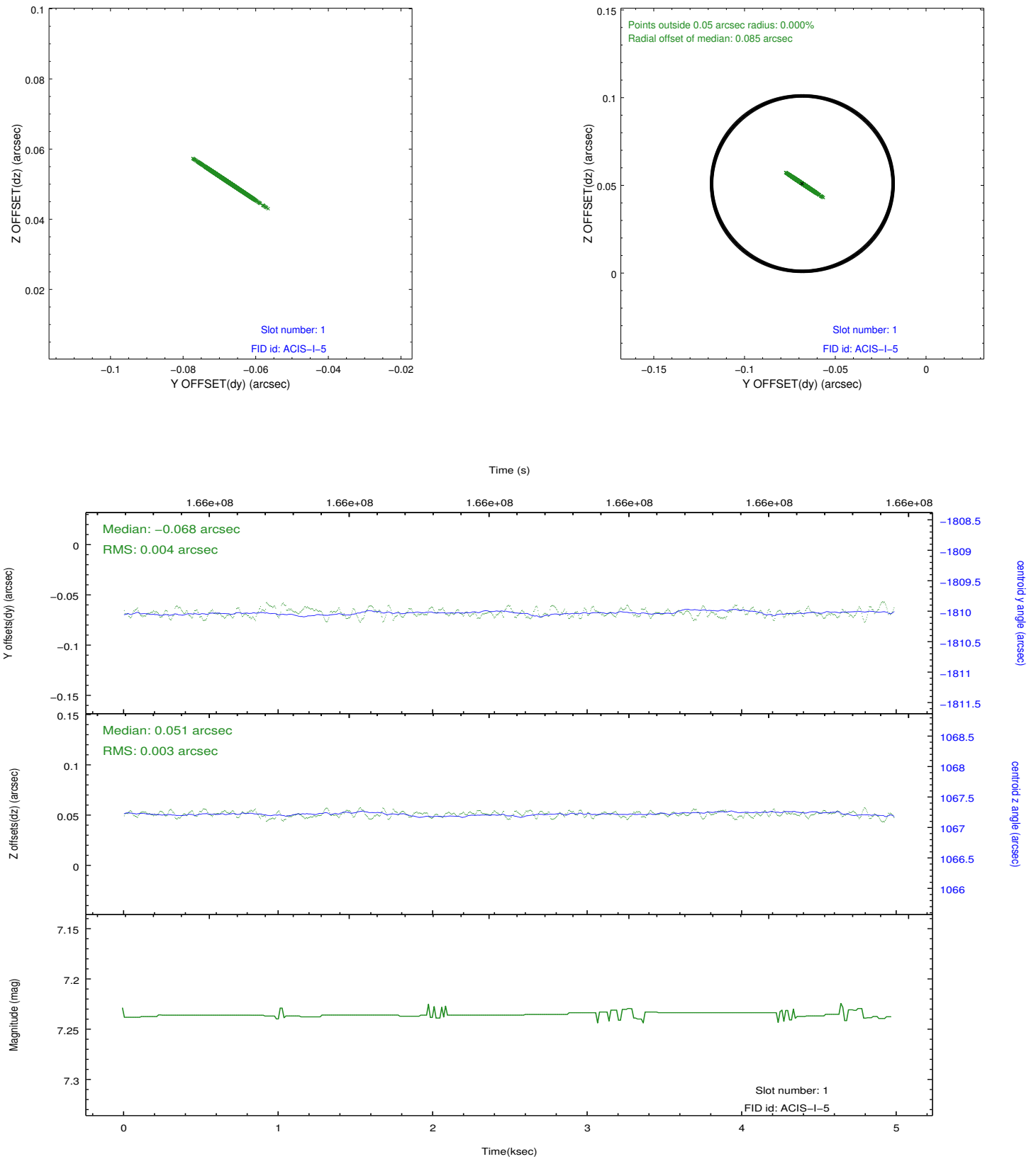


2.5 FID Slots

2.5.1 Slot 0



2.5.2 Slot 1



A Summary

A.1 Status

V&V Scientist	Beth Sundheim
V&V Date (YYYY-MM-DD)	2013.01.10
V&V Edition	1
V&V Disposition and Status	OK
V&V Charge Time	4.575

A.2 Comments

The fid light in slot 2 was removed from the aspect solution due to poor data quality. The aspect solution is improved by the removal of this fid light from the solution.