

V&V Reference Report

L2 ASCDS Version : 7.6.8

Observation 4222 - L2 Version 001
Chandra X-Ray Center

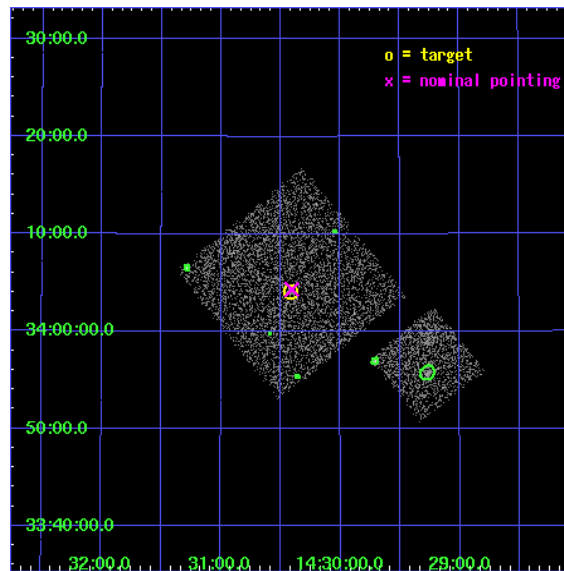
L2 Processing Date : Jul 29 2006

Contents

1	Front	2
2	OBI	3
2.1	OBI	3
2.1.1	Images	3
2.1.2	Bias	3
2.1.3	Parameters	4
2.1.4	Events	4
2.2	Compared Parameters	5
2.3	Aspect	6
2.4	Star Slots	9
2.4.1	Slot 3	9
2.4.2	Slot 4	10
2.4.3	Slot 5	11
2.4.4	Slot 6	12
2.4.5	Slot 7	13
2.5	FID Slots	14
2.5.1	Slot 0	14
2.5.2	Slot 1	15
2.5.3	Slot 2	16
3	Point Sources	17
A	Summary	18
A.1	Status	18
A.2	Comments	18

1 Front

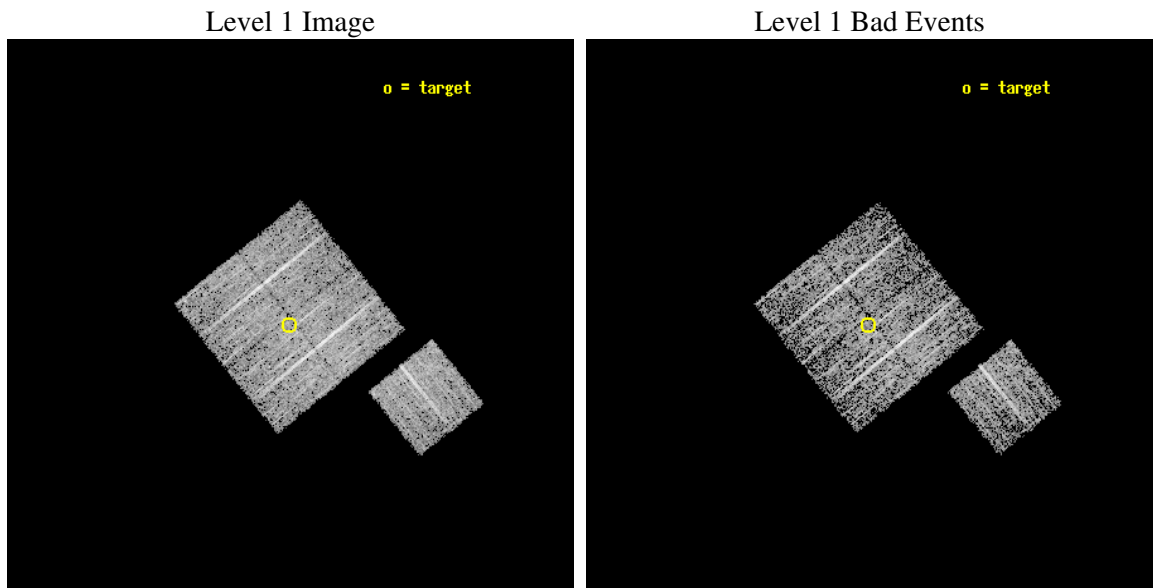
seq_num	900265
obs_id	4222
title	A CHANDRA WIDE-FIELD SURVEY TO MAP THE COSMIC WEB AND INVESTIGATE THE EVOLUTION OF NUCLEAR ACCRETION
observer	Dr. Christine Jones
object	SS1
dtcycle	0
cycle	P
ra_targ	217.604097
dec_targ	34.068
ra_nom	217.60137573747
dec_nom	34.072039231957
roll_nom	141.01022066614
revision	2
ontime	4674.7999910116
livetime	4613.7202875914
ontime0	4674.7999910116
ontime1	4674.7999910116
ontime2	4674.7999910116
ontime3	4674.7999910116
ontime6	4674.7999910116
l2events	9231



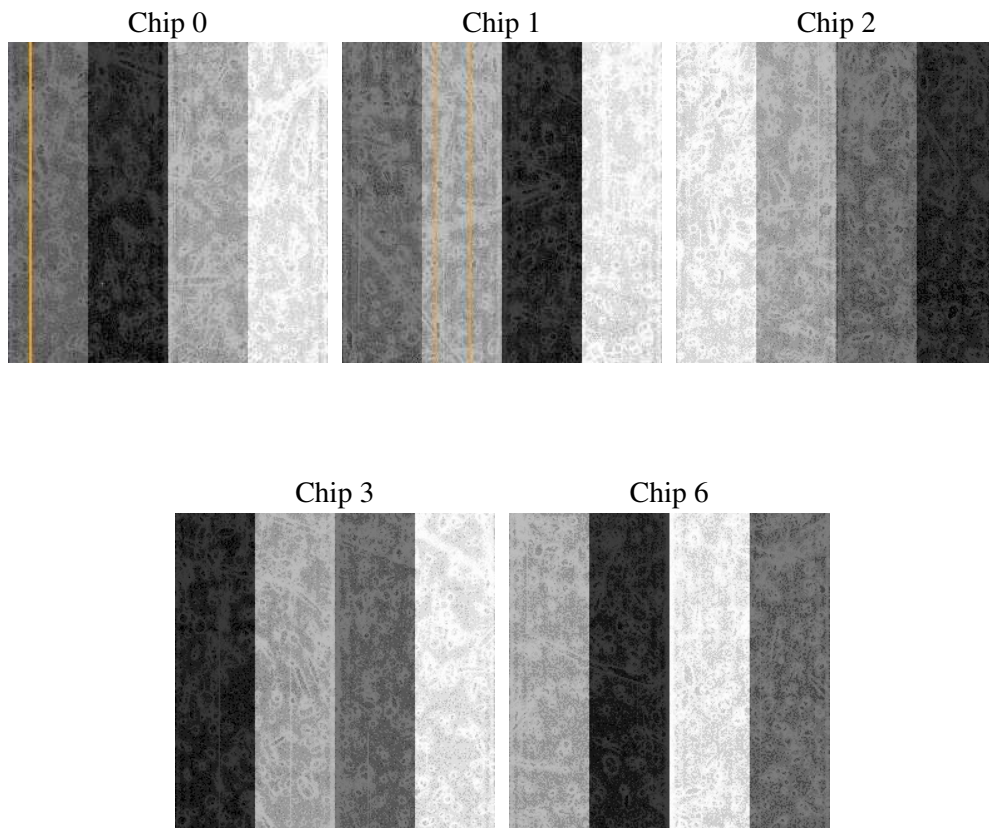
2 OBI

2.1 OBI

2.1.1 Images



2.1.2 Bias



2.1.3 Parameters

obi_num	1
ascdsver	7.6.8
caldbver	3.2.2
date	2006-07-29T20:20:20
revision	2

sched_exp_time	4900.000000
ontime	4680.1029872894
ontime0	4680.1029872894
ontime1	4680.1029872894
ontime2	4680.1029872894
ontime3	4680.1029872894
ontime6	4680.1029872894
l1events	109916

2.1.4 Events

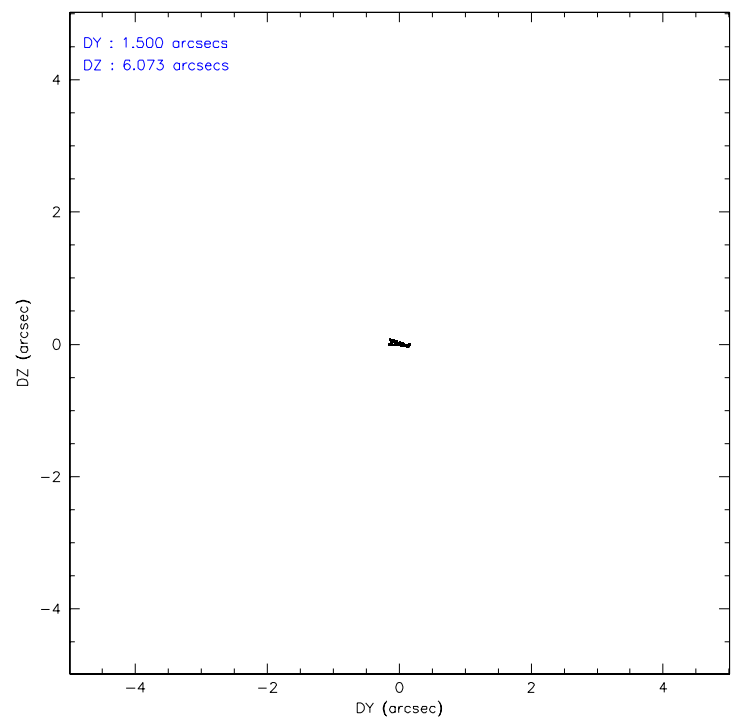
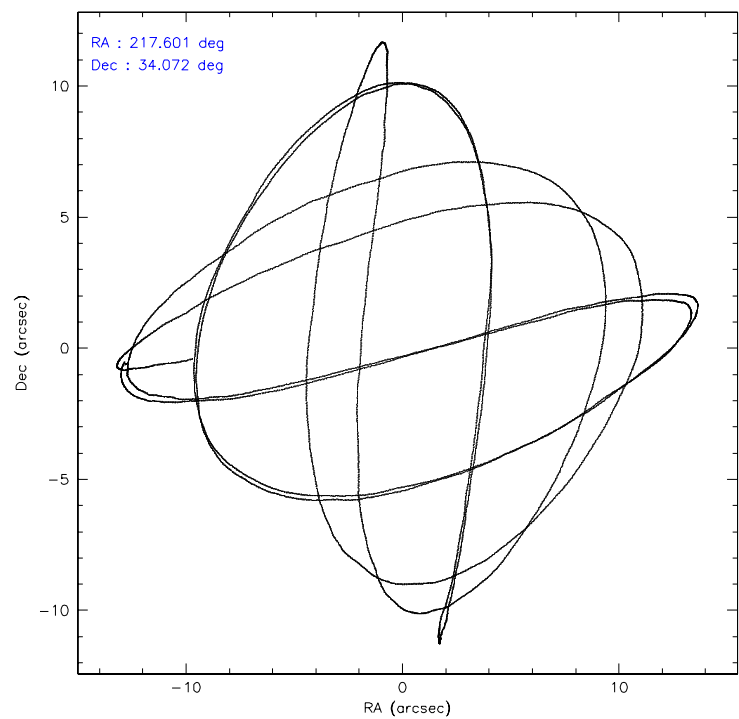
	ccd 0	ccd 1	ccd 2	ccd 3	ccd 6
level 1 events	20025	21827	24243	22082	21739
rejected events	17843	19445	22052	20016	19275
rejected %	89%	89%	90%	90%	88%

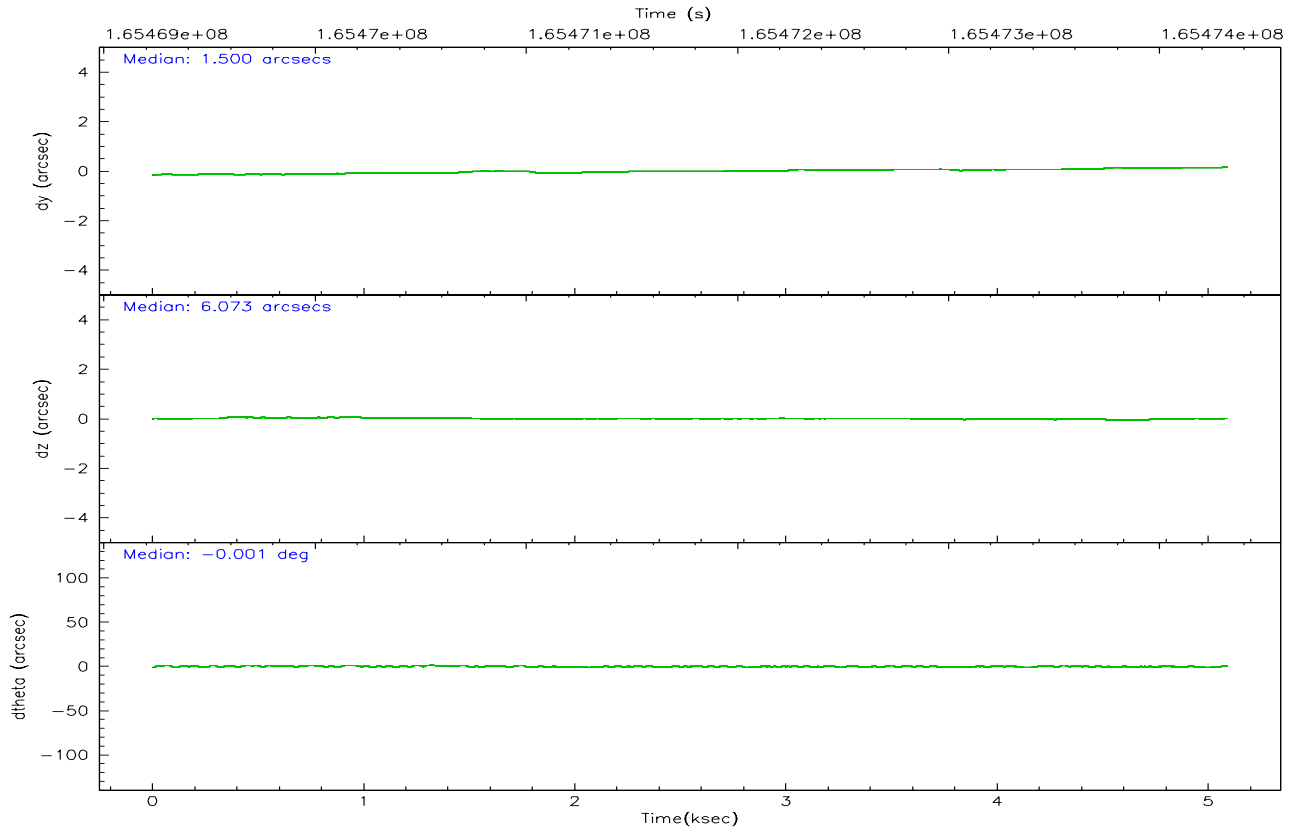
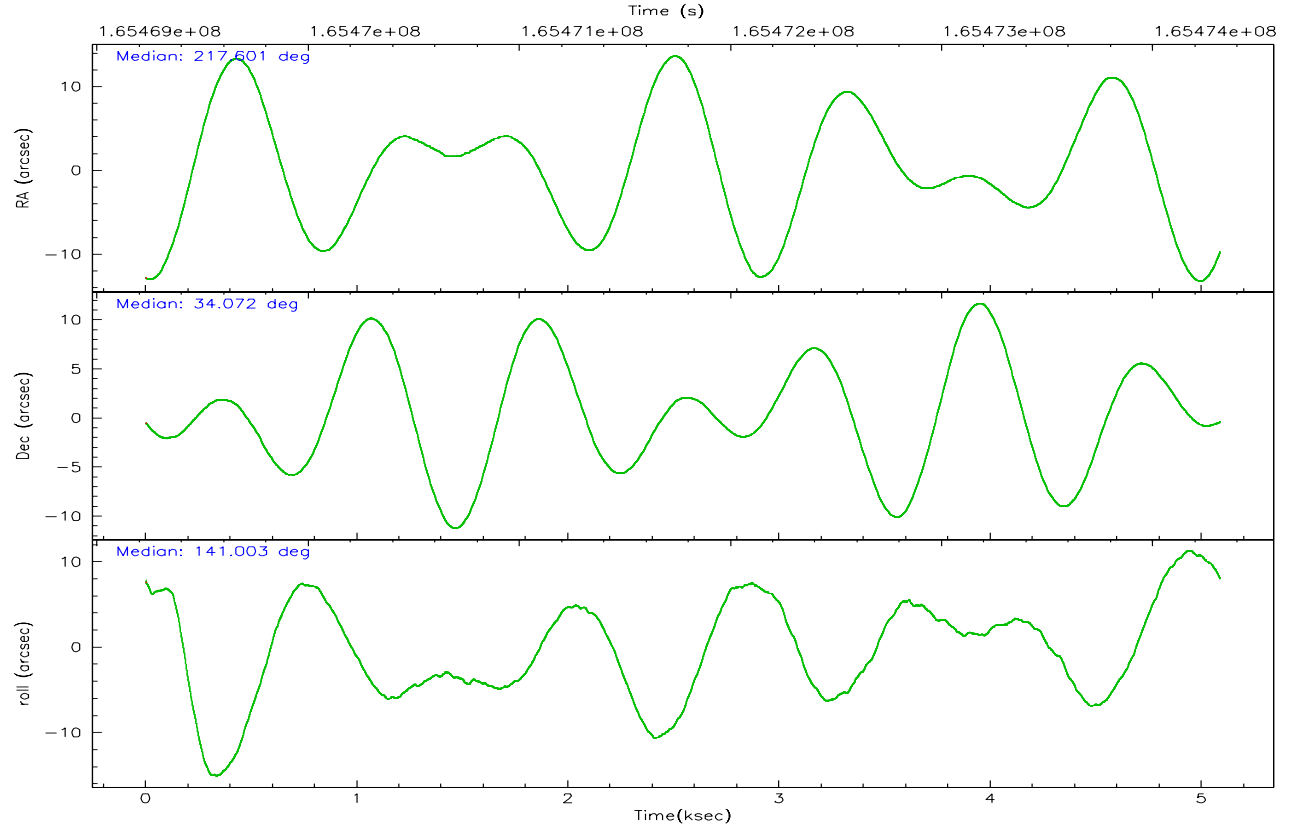
	ccd 0	ccd 1	ccd 2	ccd 3	ccd 6
grade 0 events	814	830	811	766	1031
	4%	3%	3%	3%	4%
grade 1 events	7	11	9	8	10
	0%	0%	0%	0%	0%
grade 2 events	460	470	505	413	482
	2%	2%	2%	1%	2%
grade 3 events	272	307	238	239	257
	1%	1%	0%	1%	1%
grade 4 events	266	305	259	253	250
	1%	1%	1%	1%	1%
grade 5 events	671	689	610	732	789
	3%	3%	2%	3%	3%
grade 6 events	370	472	380	395	448
	1%	2%	1%	1%	2%
grade 7 events	17165	18743	21431	19276	18472
	85%	85%	88%	87%	84%

2.2 Compared Parameters

Parameter	Planned	Actual	Parameter	Planned	Actual
Instrument	ACIS	ACIS	Obspar format version number	6	6
Detector	ACIS-01236	ACIS-01236	Obspar file type	PREDICTED	ACTUAL
Grating	NONE	NONE	Obspar update status	NONE	UPDATED
Data mode	VFAINT	VFAINT	On-chip summing requested	N	N
Observation mode	POINTING	POINTING	Subarray requested	NONE	NONE
Pointing RA	217.634139	217.6013757374727	Alternating exposures requested	N	N
Pointing Dec	34.067917	34.07203923195738	Primary exposure time	0.000000	3.1
Pointing Roll	140.783168	141.0102206661406			
SIM focus pos (mm)	-0.782348	-0.7809083437167272			
SIM defocus (mm)	0	0.001439871863259334			
SIM translation stage pos (mm)	-233.592463	-233.5874344608287			
SIM translation stage offset (mm)	0	-0.005018542100998502			
Observation start time	165469424.184000	165469047.91575			
Observation start date	2003-03-31T03:42:40	2003-03-31T03:37:27			
Observation end time	165474324.184000	165474457.86598			
Observation end date	2003-03-31T05:04:20	2003-03-31T05:07:37			
Read mode	TIMED	TIMED			

2.3 Aspect



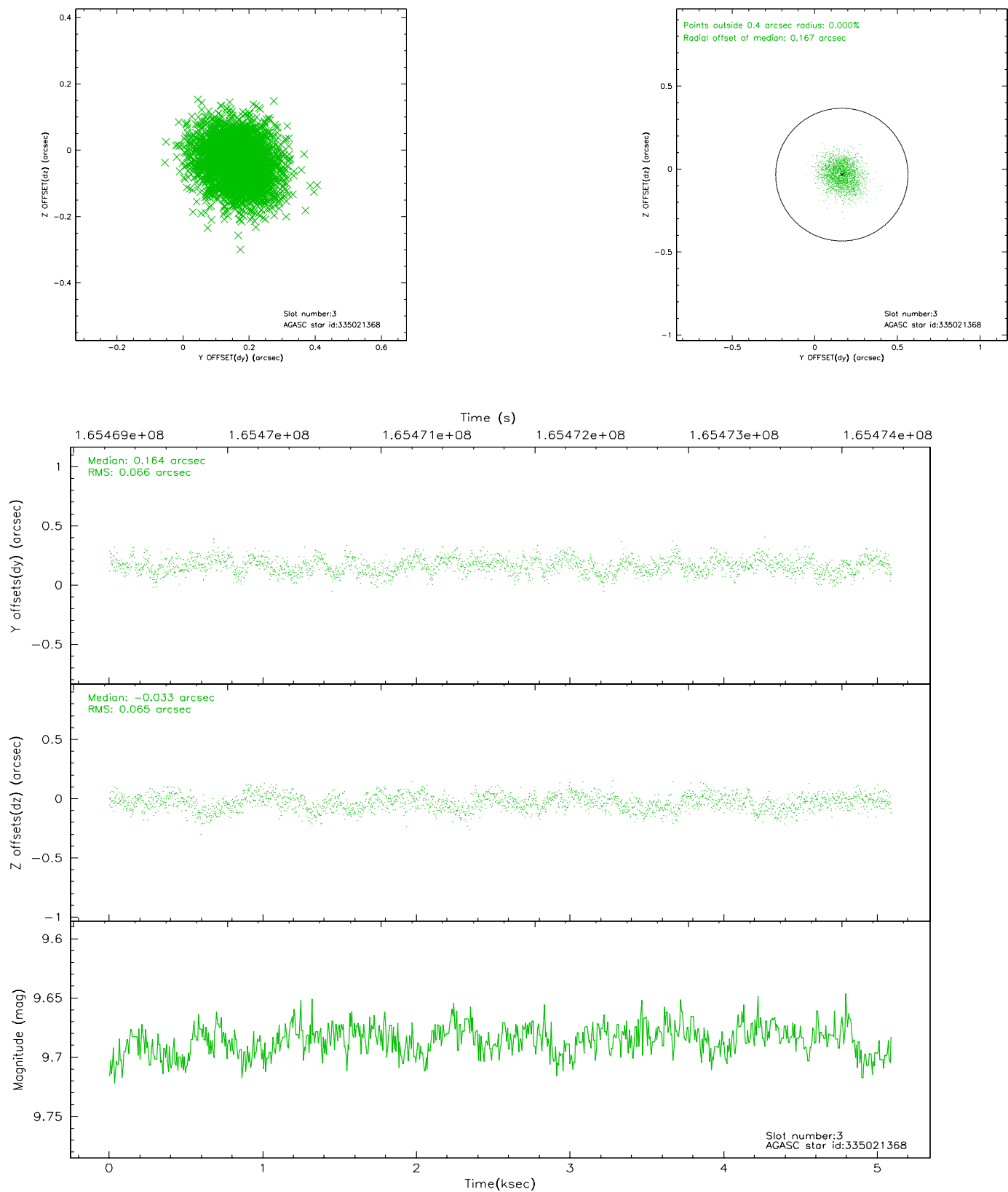


Slot Statistics

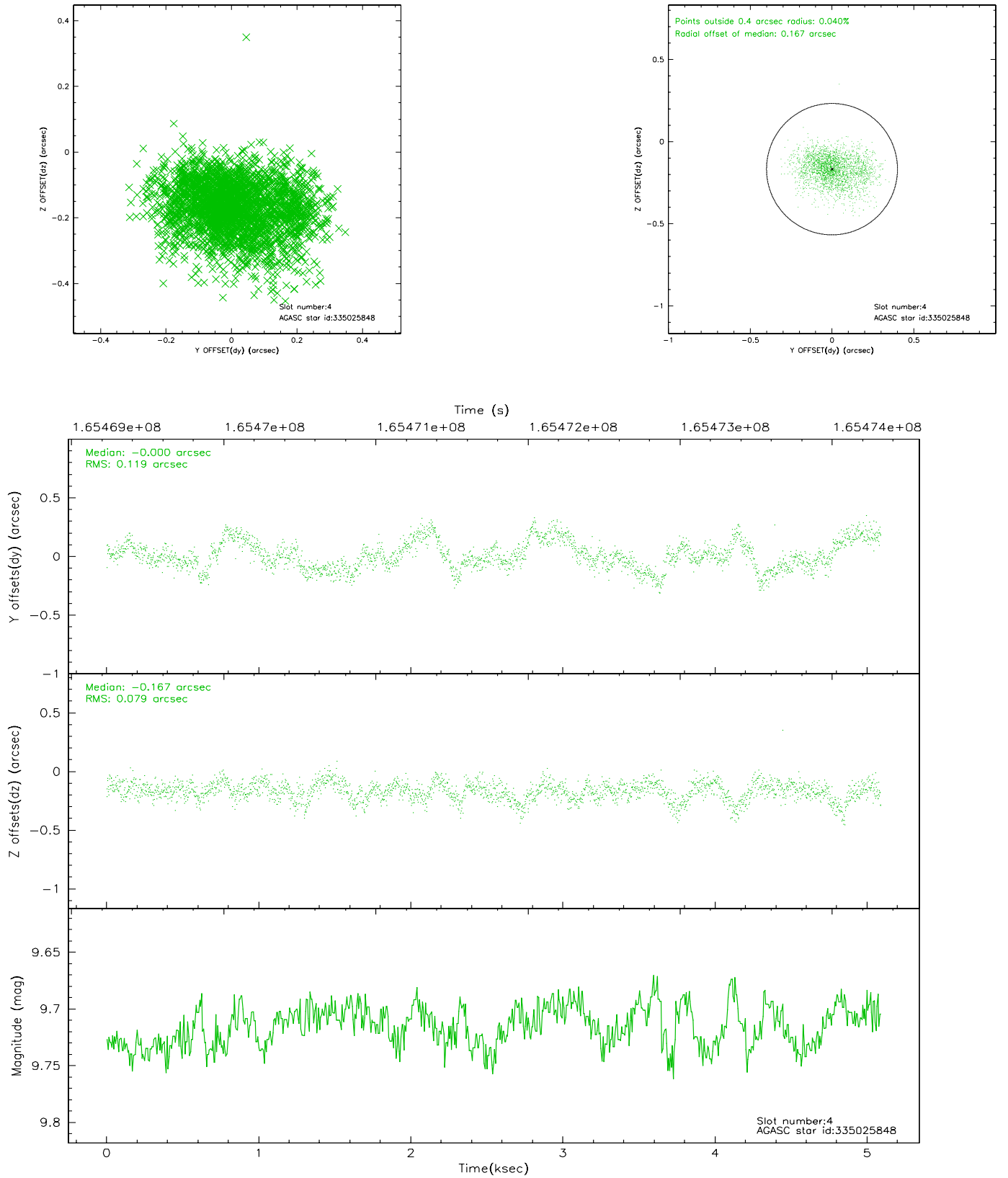
slot	status	id	mag	n_pts	med_dy	med_dz	dr1	dr2	ra	dec	mean_y	mean_z
0	FID	ACIS-I-1	7.25	1242	-0.022	0.028	0.006	0.010	0.000000	0.000000	938.30	-829.43
1	FID	ACIS-I-5	7.24	1242	-0.045	0.031	0.006	0.010	0.000000	0.000000	-1809.14	1067.50
2	FID	ACIS-I-6	7.27	1242	-0.025	0.011	0.007	0.011	0.000000	0.000000	402.59	1713.31
3	GUIDE	335021368	9.69	2483	0.164	-0.033	0.101	0.158	217.529643	33.934817	-60.85	568.38
4	GUIDE	335025848	9.71	2483	-0.000	-0.167	0.155	0.248	217.530531	33.778292	-418.98	1003.69
5	GUIDE	335028336	9.48	2481	-0.107	0.031	0.117	0.186	217.189840	34.665629	2381.47	-836.84
6	GUIDE	335028696	9.20	2477	-0.012	0.117	0.091	0.145	217.260519	33.844112	358.27	1328.77
7	GUIDE	335023248	8.96	2482	-0.050	0.052	0.108	0.180	217.634832	34.944512	1994.27	-2445.47

2.4 Star Slots

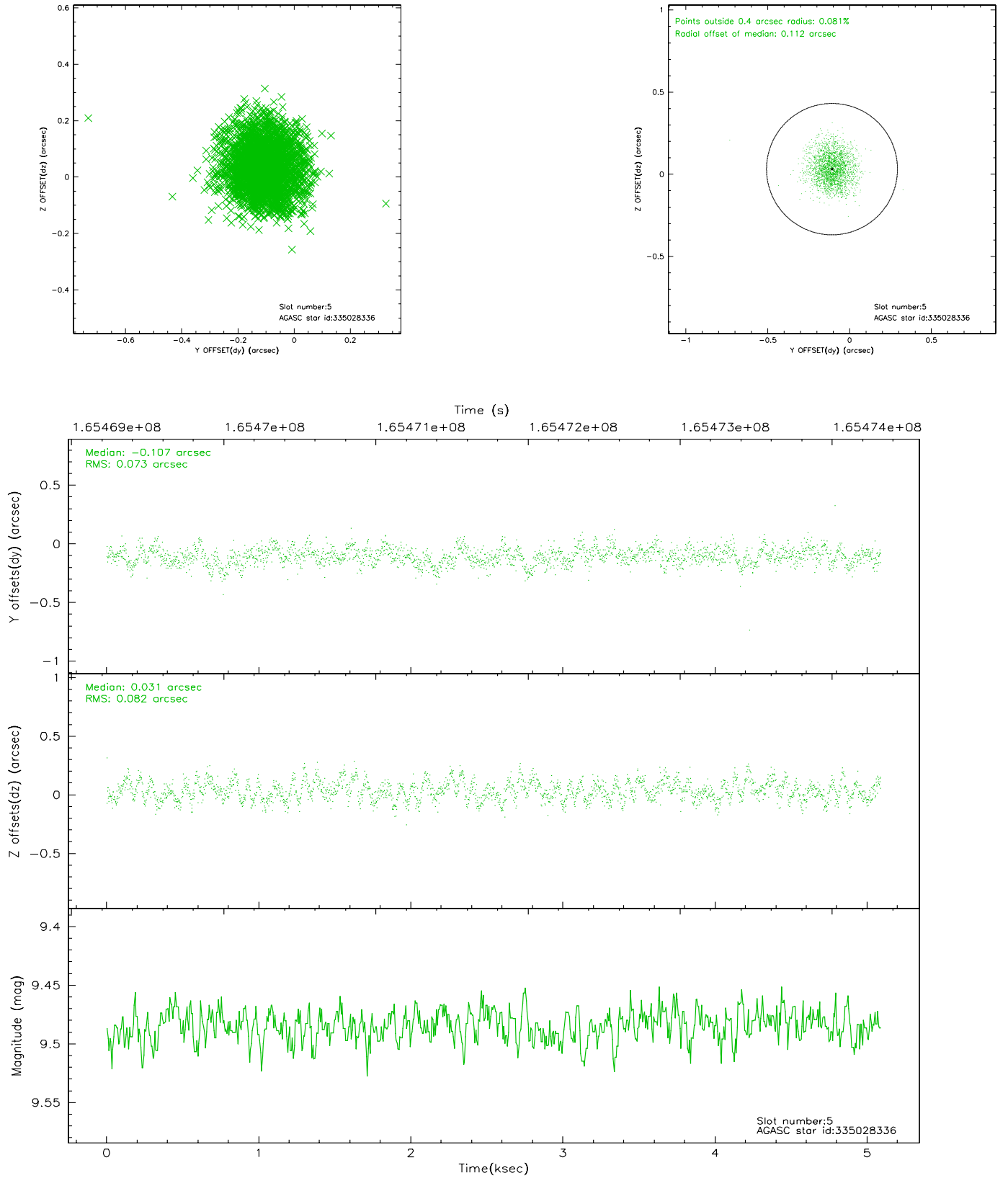
2.4.1 Slot 3



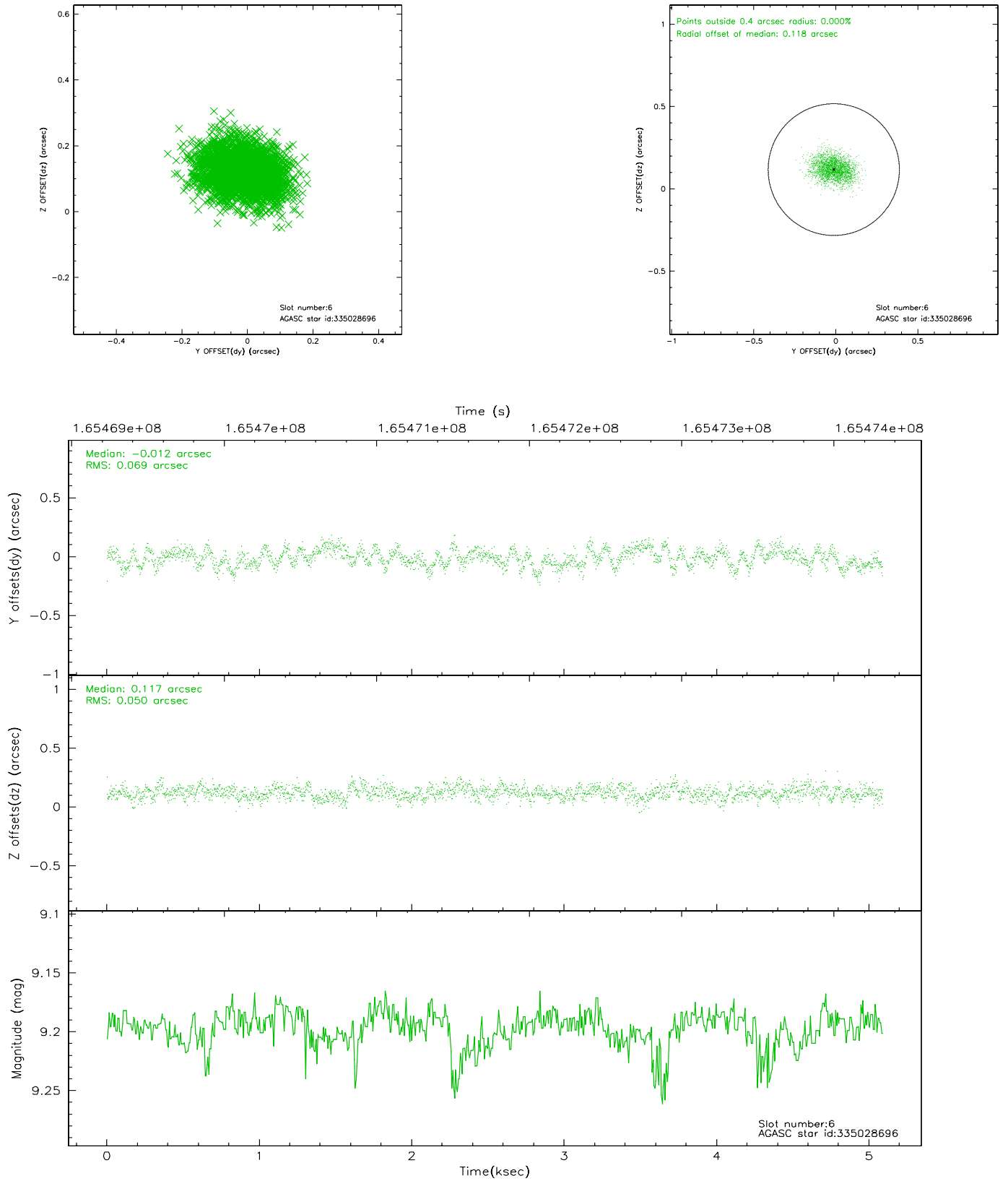
2.4.2 Slot 4



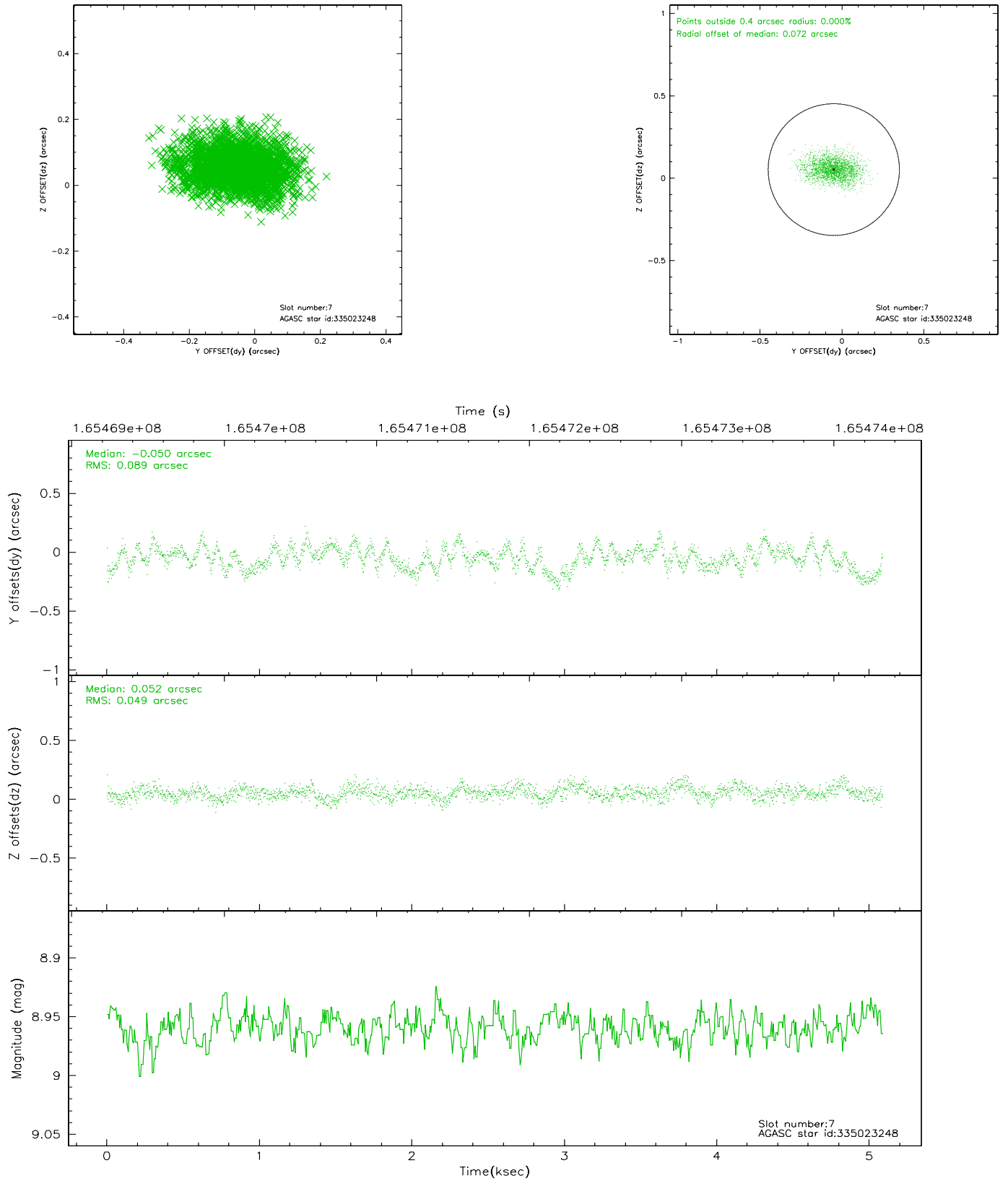
2.4.3 Slot 5



2.4.4 Slot 6

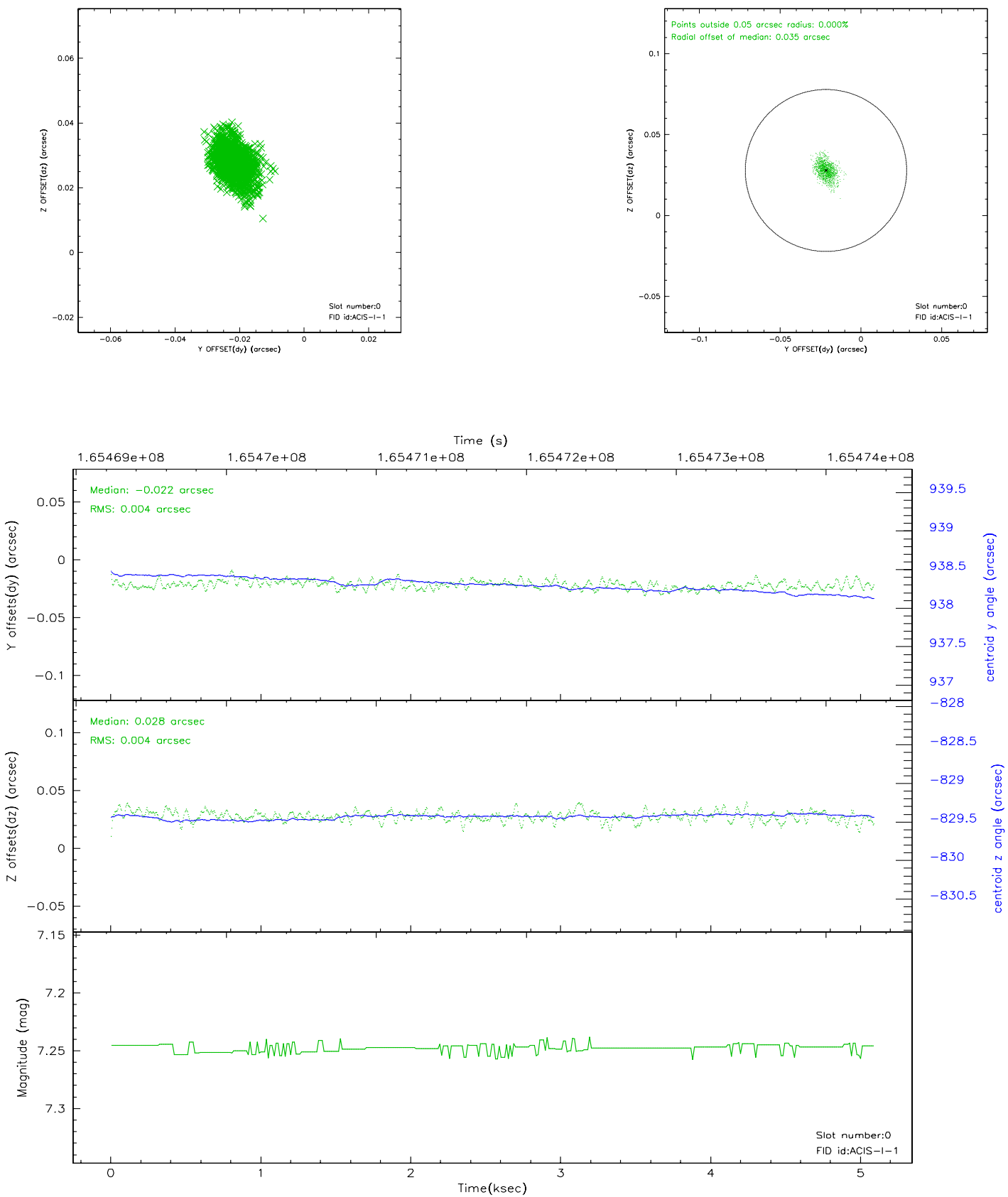


2.4.5 Slot 7

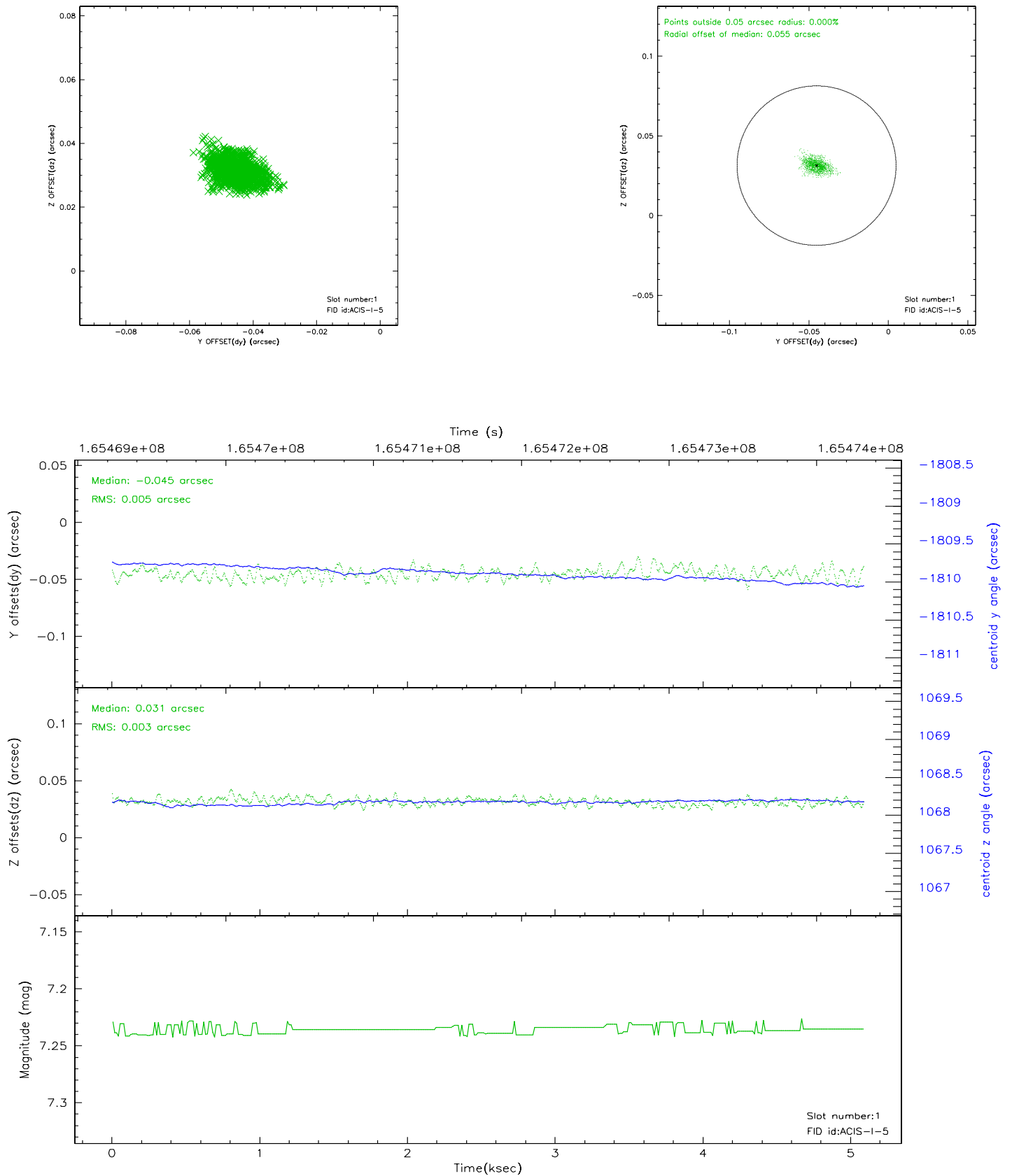


2.5 FID Slots

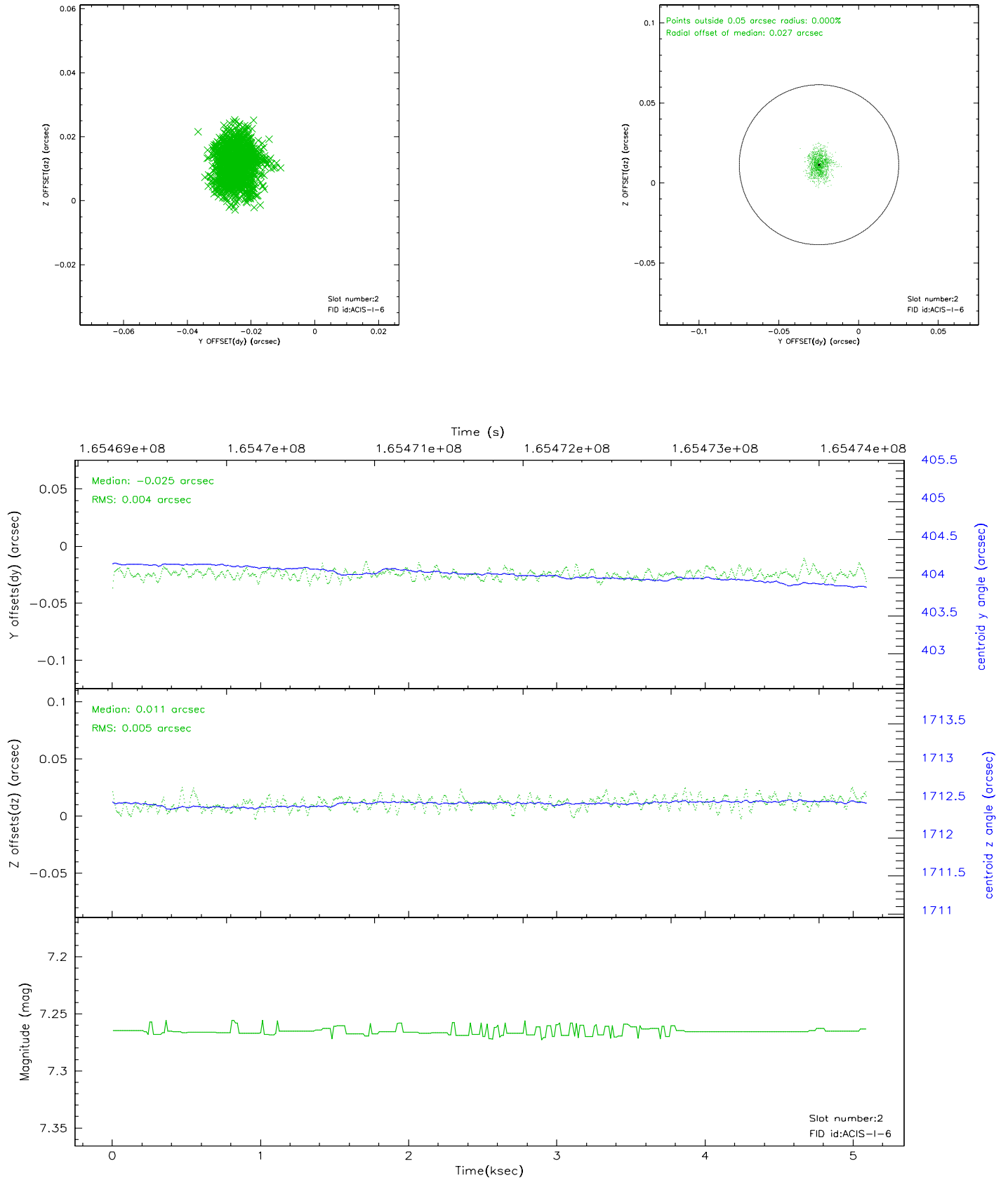
2.5.1 Slot 0



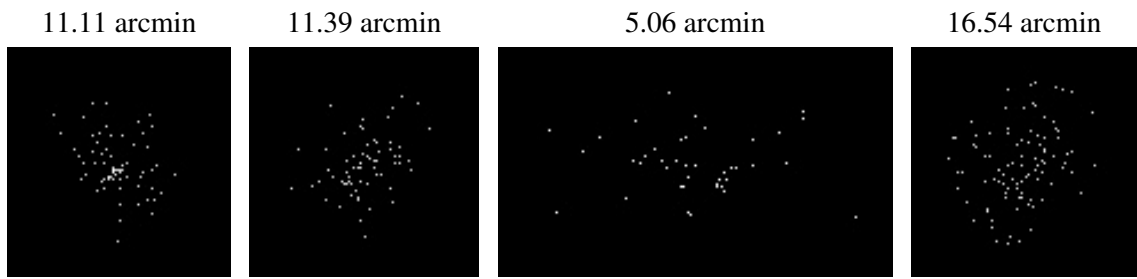
2.5.2 Slot 1



2.5.3 Slot 2



3 Point Sources



A Summary

A.1 Status

V&V Scientist	Jen Lauer
V&V Date (YYYY-MM-DD)	2006.07.30
V&V Edition	1
V&V Disposition and Status	OK
V&V Charge Time	4.674

A.2 Comments