

# V&V Reference Report

## L2 ASCDS Version : 7.6.8

Observation 4220 - L2 Version 001  
Chandra X-Ray Center

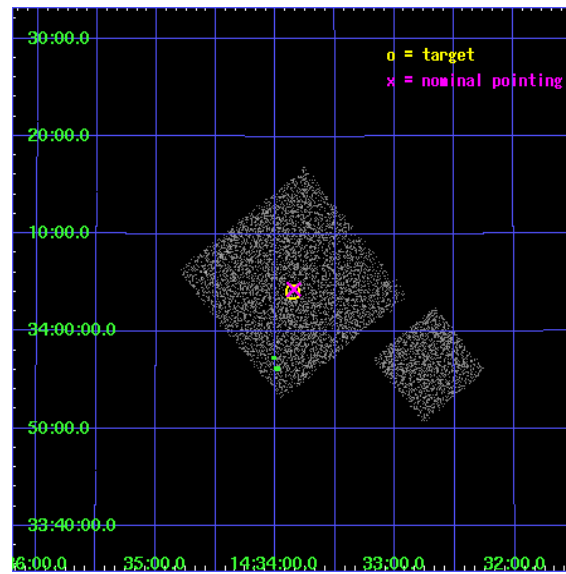
L2 Processing Date : Jul 30 2006

## Contents

<b>1</b>	<b>Front</b>	<b>2</b>
<b>2</b>	<b>OBI</b>	<b>3</b>
2.1	OBI . . . . .	3
2.1.1	Images . . . . .	3
2.1.2	Bias . . . . .	3
2.1.3	Parameters . . . . .	4
2.1.4	Events . . . . .	4
2.2	Compared Parameters . . . . .	5
2.3	Aspect . . . . .	6
2.4	Star Slots . . . . .	9
2.4.1	Slot 3 . . . . .	9
2.4.2	Slot 4 . . . . .	10
2.4.3	Slot 5 . . . . .	11
2.4.4	Slot 6 . . . . .	12
2.4.5	Slot 7 . . . . .	13
2.5	FID Slots . . . . .	14
2.5.1	Slot 0 . . . . .	14
2.5.2	Slot 1 . . . . .	15
2.5.3	Slot 2 . . . . .	16
<b>3</b>	<b>Point Sources</b>	<b>17</b>
<b>A</b>	<b>Summary</b>	<b>18</b>
A.1	Status . . . . .	18
A.2	Comments . . . . .	18

# 1 Front

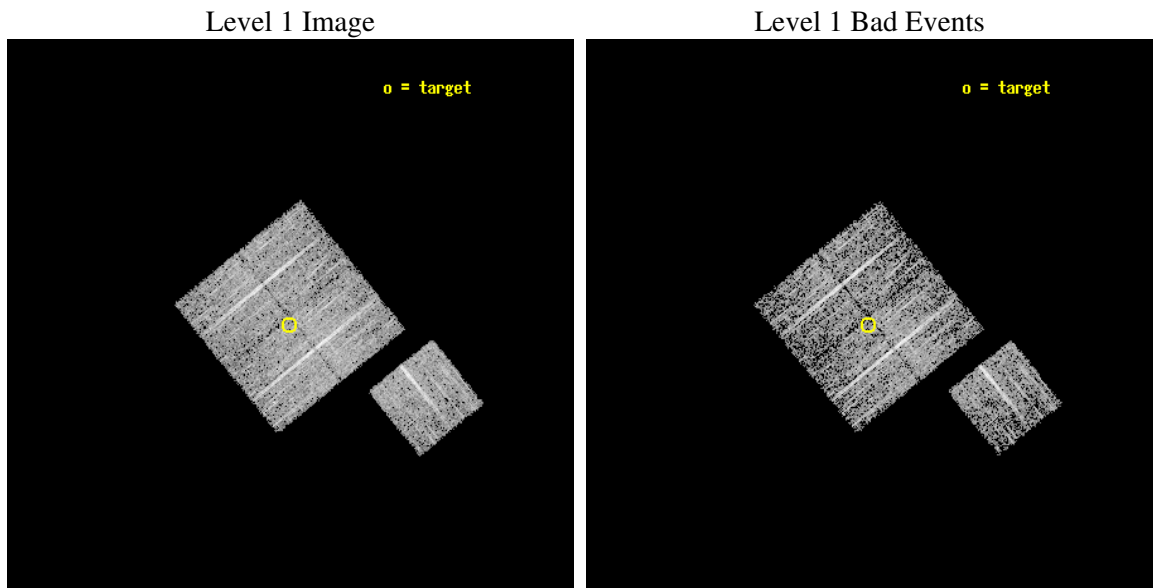
seq_num	900263
obs_id	4220
title	A CHANDRA WIDE-FIELD SURVEY TO MAP THE COSMIC WEB AND INVESTIGATE THE EVOLUTION OF NUCLEAR ACCRETION
observer	Dr. Christine Jones
object	SS23
dtcycle	0
cycle	P
ra_targ	218.463931
dec_targ	34.068
ra_nom	218.46128837804
dec_nom	34.072020809423
roll_nom	141.01016626476
revision	3
ontime	4674.7999910116
livetime	4613.7202875914
ontime0	4674.7999910116
ontime1	4674.7999910116
ontime2	4674.7999910116
ontime3	4674.7999910116
ontime6	4674.7999910116
l2events	9499



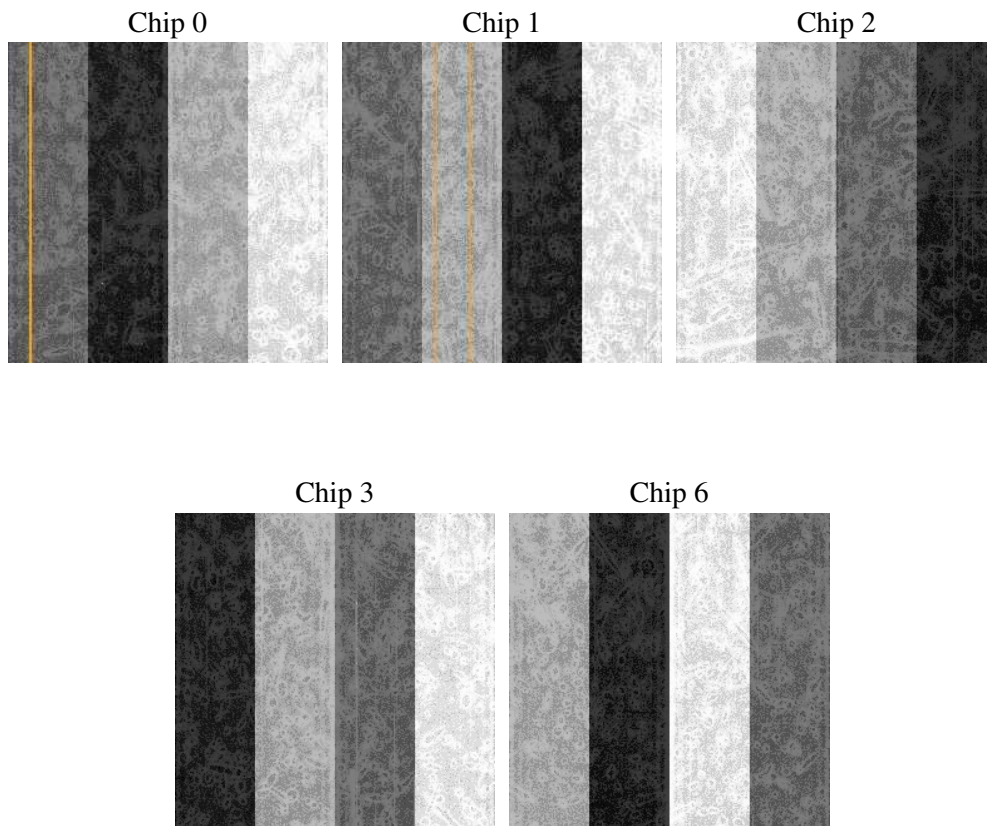
## 2 OBI

### 2.1 OBI

#### 2.1.1 Images



#### 2.1.2 Bias



### 2.1.3 Parameters

obi_num	1
ascdsver	7.6.8
caldsver	3.2.2
date	2006-07-30T02:28:55
revision	3

sched_exp_time	4900.000000
ontime	4680.1023173034
ontime0	4680.1022973955
ontime1	4680.1023173034
ontime2	4680.1022973955
ontime3	4680.1023173034
ontime6	4680.1023173034
l1events	117293

### 2.1.4 Events

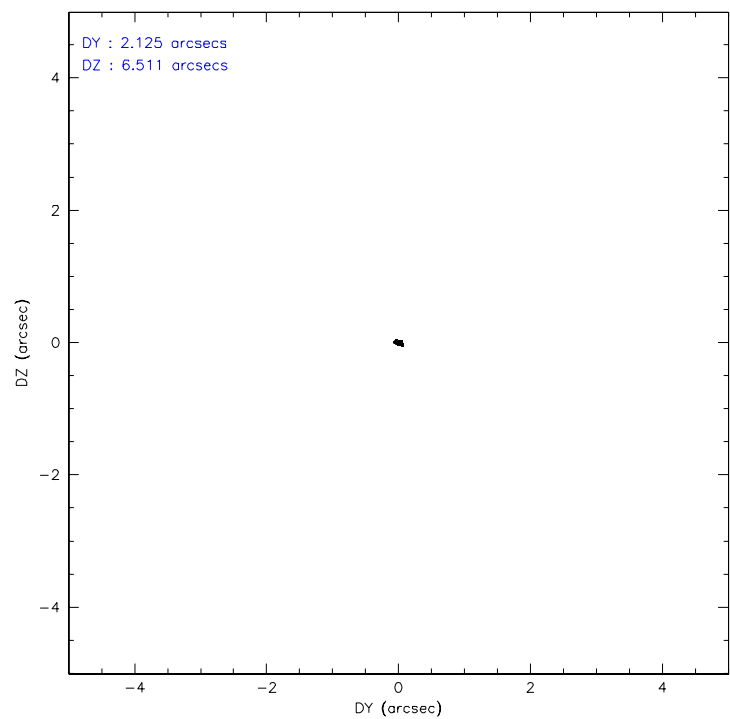
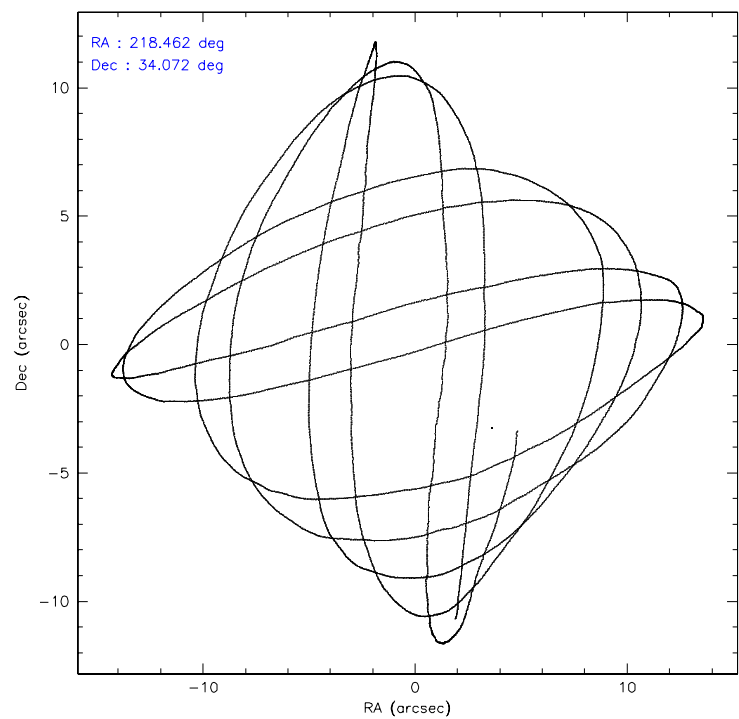
	ccd 0	ccd 1	ccd 2	ccd 3	ccd 6
level 1 events	21864	22138	25772	24404	23115
rejected events	19538	19663	23627	22118	20755
rejected %	89%	88%	91%	90%	89%

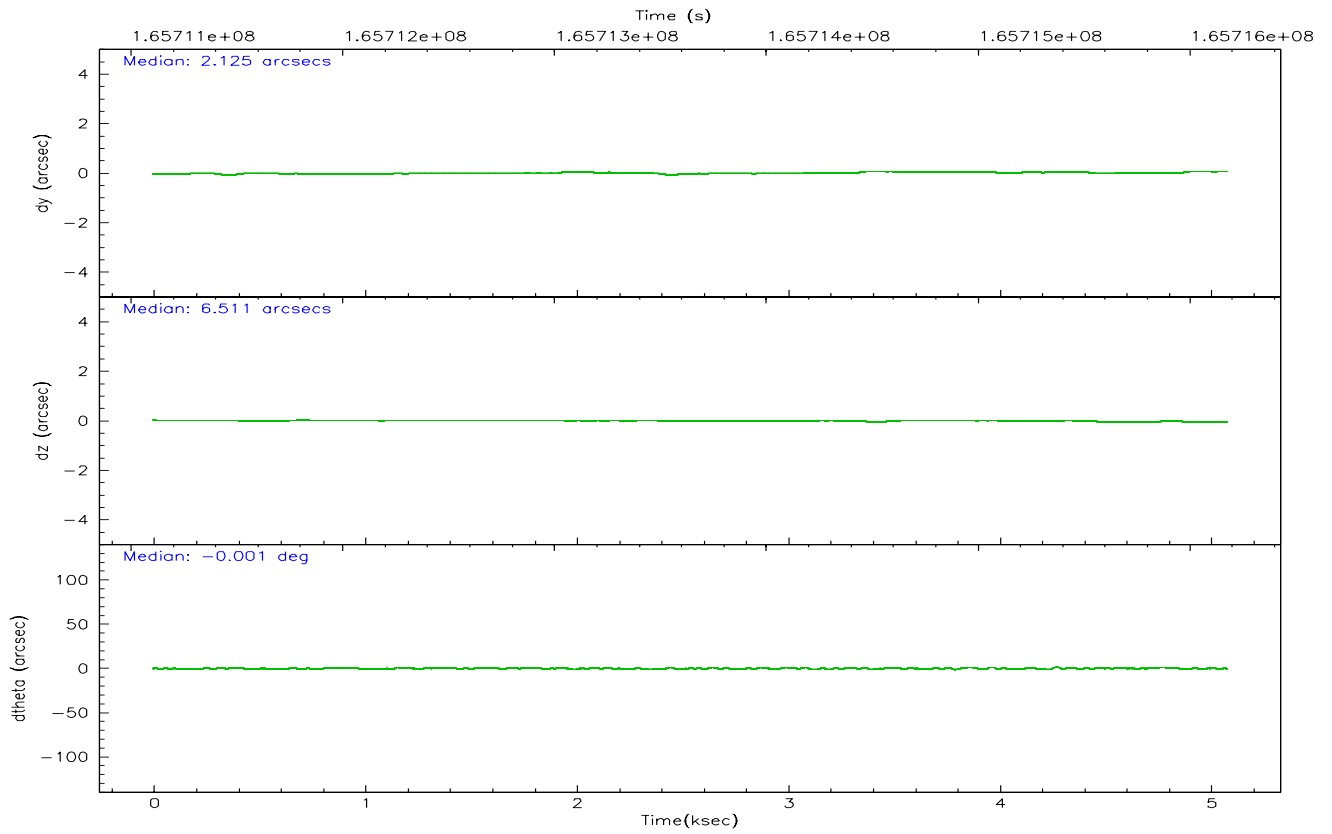
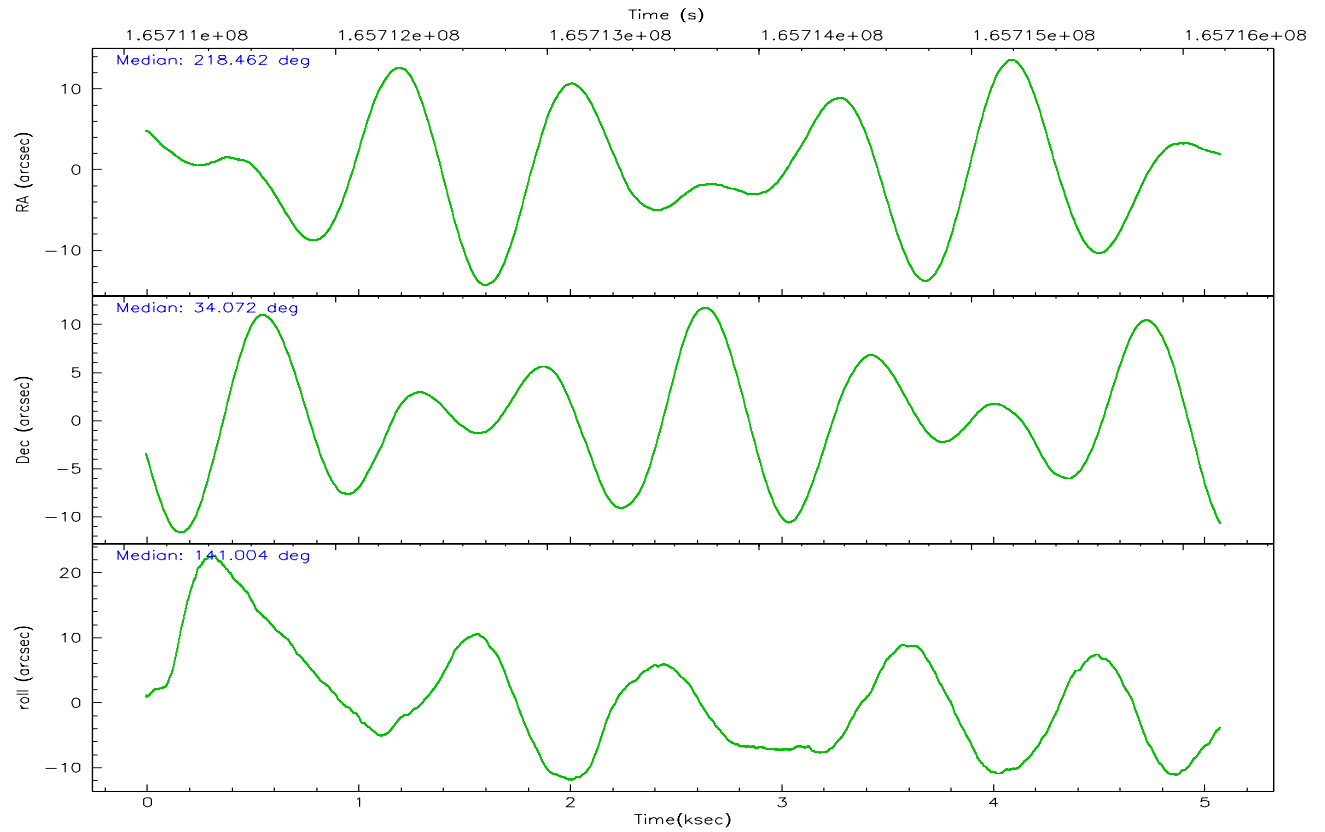
	ccd 0	ccd 1	ccd 2	ccd 3	ccd 6
grade 0 events	862	872	834	934	859
	3%	3%	3%	3%	3%
grade 1 events	15	7	15	6	12
	0%	0%	0%	0%	0%
grade 2 events	508	503	497	492	470
	2%	2%	1%	2%	2%
grade 3 events	279	341	226	242	299
	1%	1%	0%	0%	1%
grade 4 events	253	313	221	250	291
	1%	1%	0%	1%	1%
grade 5 events	688	770	700	749	707
	3%	3%	2%	3%	3%
grade 6 events	424	447	368	373	443
	1%	2%	1%	1%	1%
grade 7 events	18835	18885	22911	21358	20034
	86%	85%	88%	87%	86%

## 2.2 Compared Parameters

Parameter	Planned	Actual	Parameter	Planned	Actual
Instrument	ACIS	ACIS	Obspar format version number	6	6
Detector	ACIS-01236	ACIS-01236	Obspar file type	PREDICTED	ACTUAL
Grating	NONE	NONE	Obspar update status	NONE	UPDATED
Data mode	VFAINT	VFAINT	On-chip summing requested	N	N
Observation mode	POINTING	POINTING	Subarray requested	NONE	NONE
Pointing RA	218.493967	218.4612883780412	Alternating exposures requested	N	N
Pointing Dec	34.067919	34.07202080942318	Primary exposure time	0.000000	3.1
Pointing Roll	140.783169	141.0101662647616			
SIM focus pos (mm)	-0.782348	-0.7809083437167272			
SIM defocus (mm)	0	0.001439871863259334			
SIM translation stage pos (mm)	-233.592463	-233.5874344608287			
SIM translation stage offset (mm)	0	-0.005018542100998502			
Observation start time	165711277.184000	165710901.28845			
Observation start date	2003-04-02T22:53:33	2003-04-02T22:48:21			
Observation end time	165716177.184000	165716311.23868			
Observation end date	2003-04-03T00:15:13	2003-04-03T00:18:31			
Read mode	TIMED	TIMED			

## 2.3 Aspect



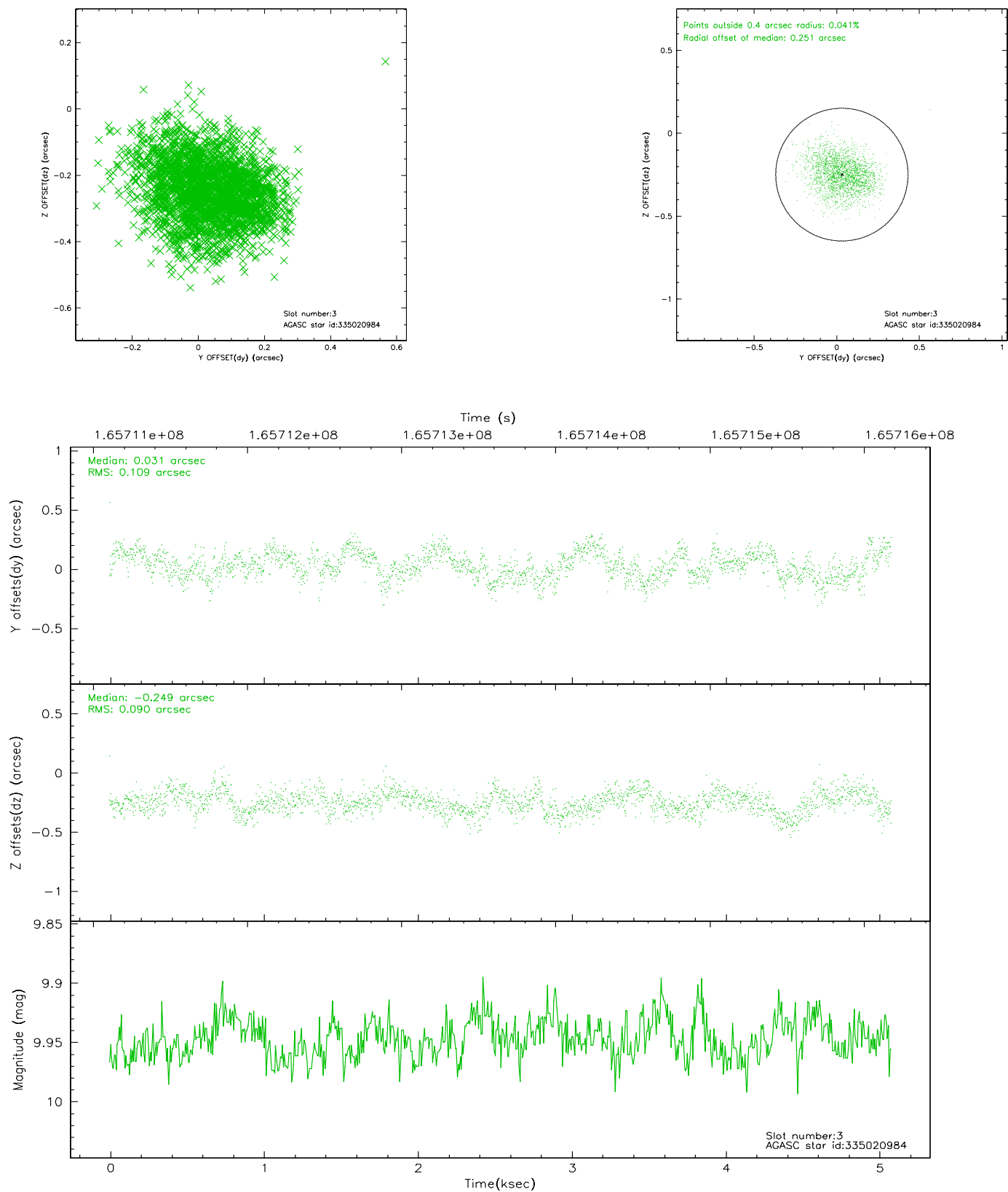


### Slot Statistics

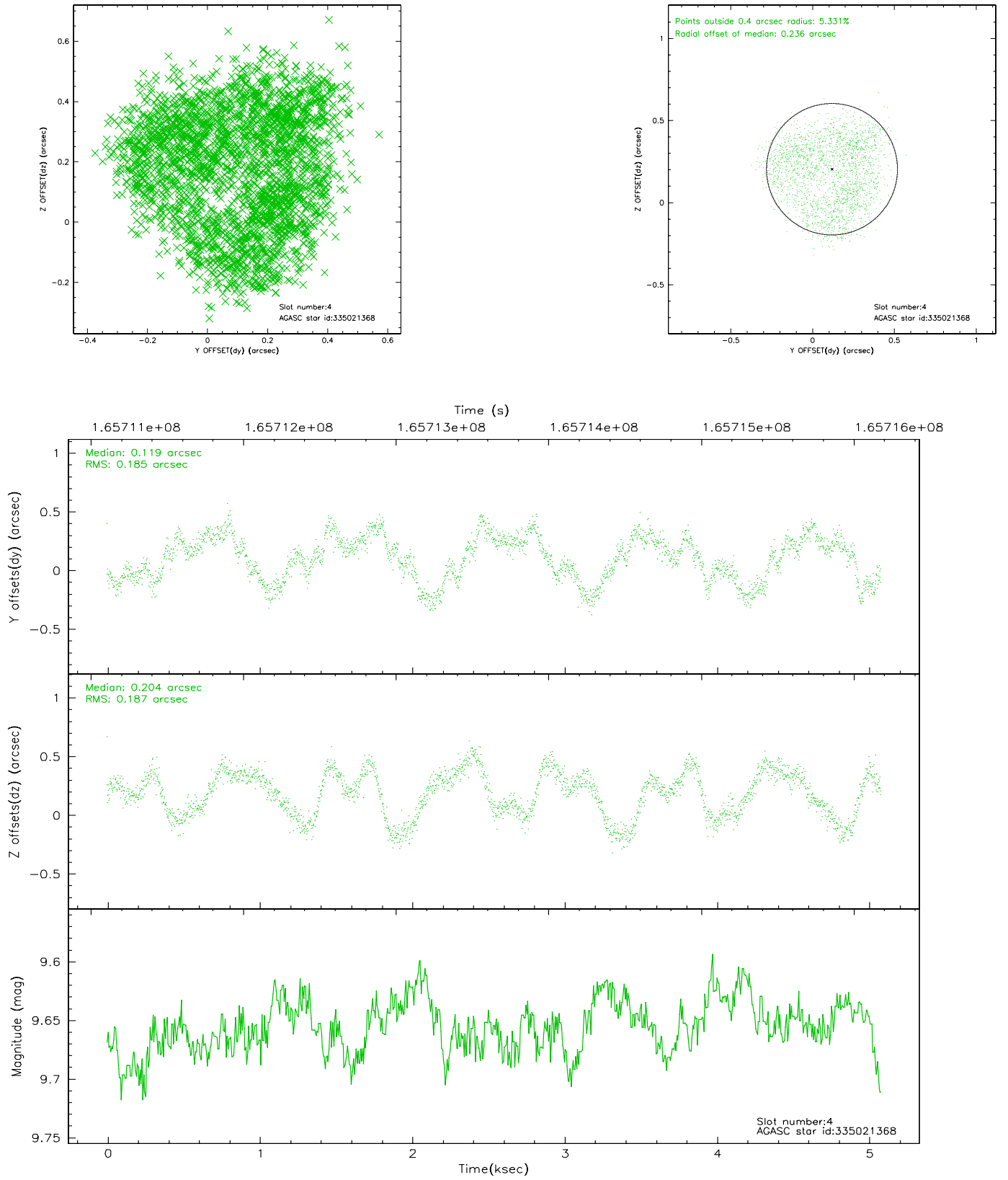
slot	status	id	mag	n_pts	med_dy	med_dz	dr1	dr2	ra	dec	mean_y	mean_z
0	FID	ACIS-I-1	7.25	1239	-0.015	0.028	0.006	0.011	0.000000	0.000000	937.65	-829.88
1	FID	ACIS-I-5	7.24	1240	-0.038	0.041	0.005	0.009	0.000000	0.000000	-1809.77	1067.08
2	FID	ACIS-I-6	7.26	1240	-0.038	0.001	0.006	0.010	0.000000	0.000000	401.93	1712.86
3	GUIDE	335020984	9.95	2456	0.031	-0.249	0.152	0.239	218.841668	33.815112	-1379.05	45.59
4	GUIDE	335021368	9.65	2476	0.119	0.204	0.294	0.402	217.529643	33.934817	1937.01	2182.17
5	GUIDE	335025040	9.91	2478	0.003	0.067	0.126	0.211	218.601670	34.305240	293.55	-863.64
6	GUIDE	335026200	10.67	2454	0.044	-0.136	0.220	0.392	218.096425	34.160577	1130.42	488.11
7	GUIDE	335023304	8.41	2477	-0.159	0.135	0.109	0.165	218.883608	34.686545	516.94	-2456.09

## 2.4 Star Slots

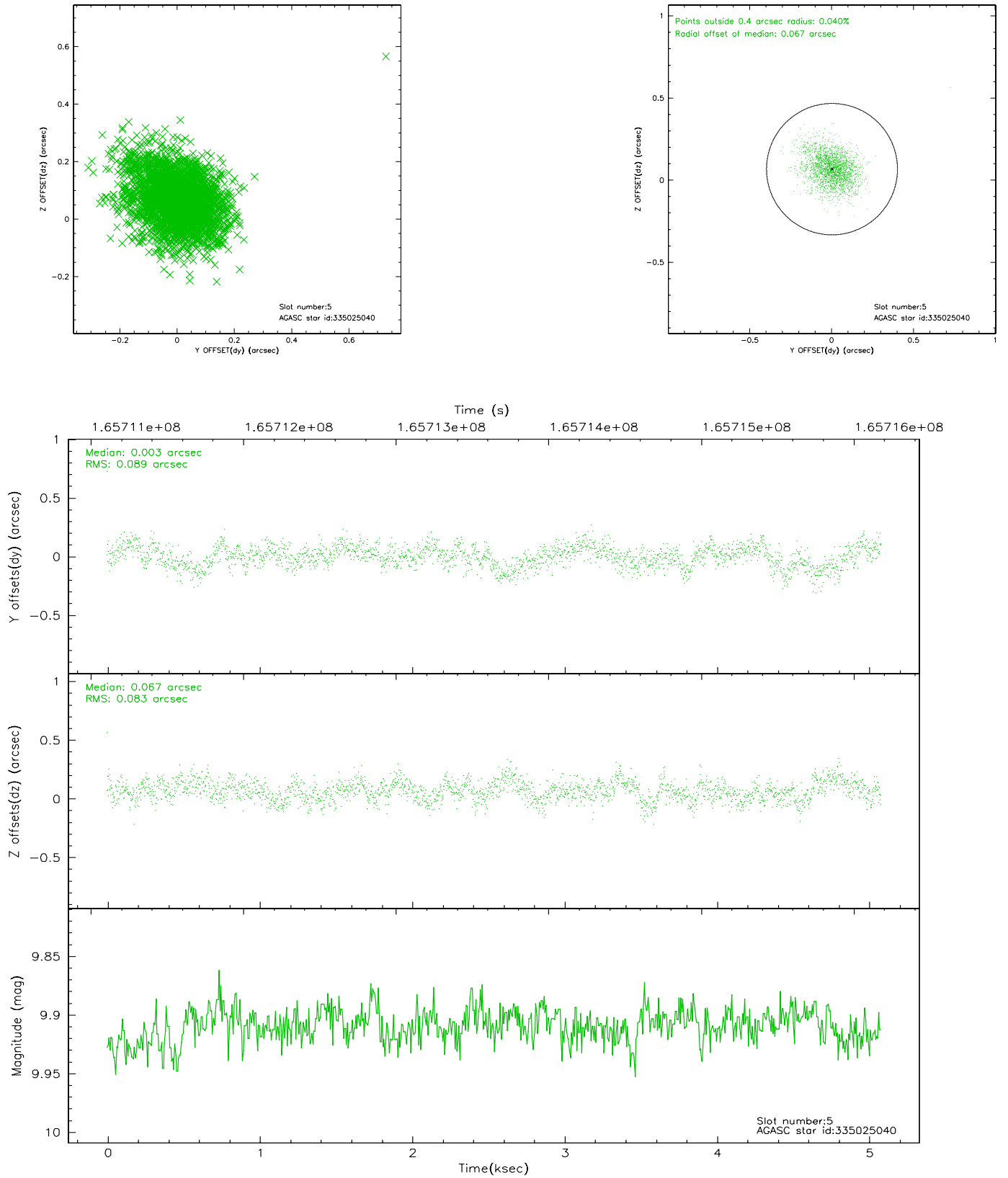
### 2.4.1 Slot 3



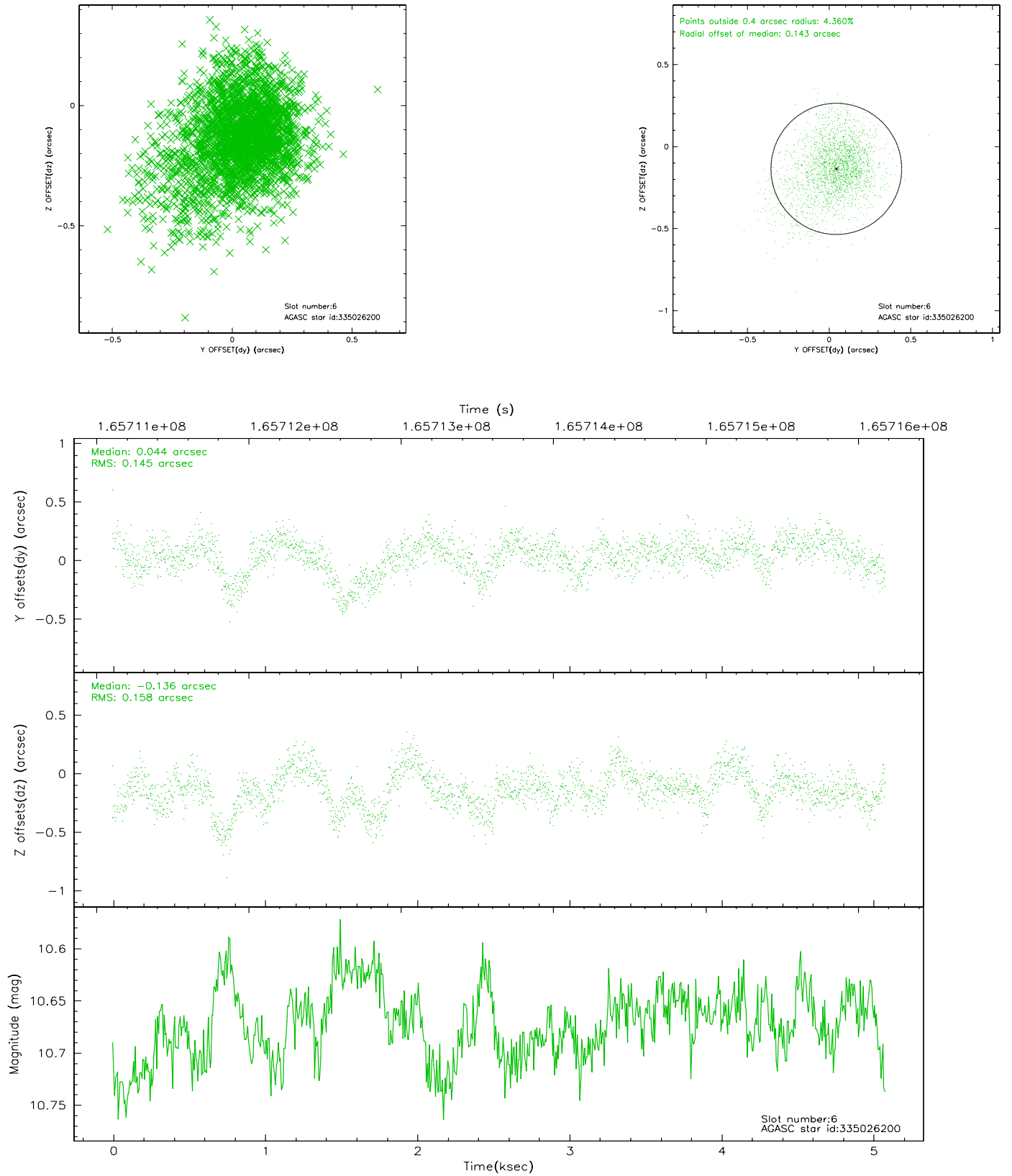
## 2.4.2 Slot 4



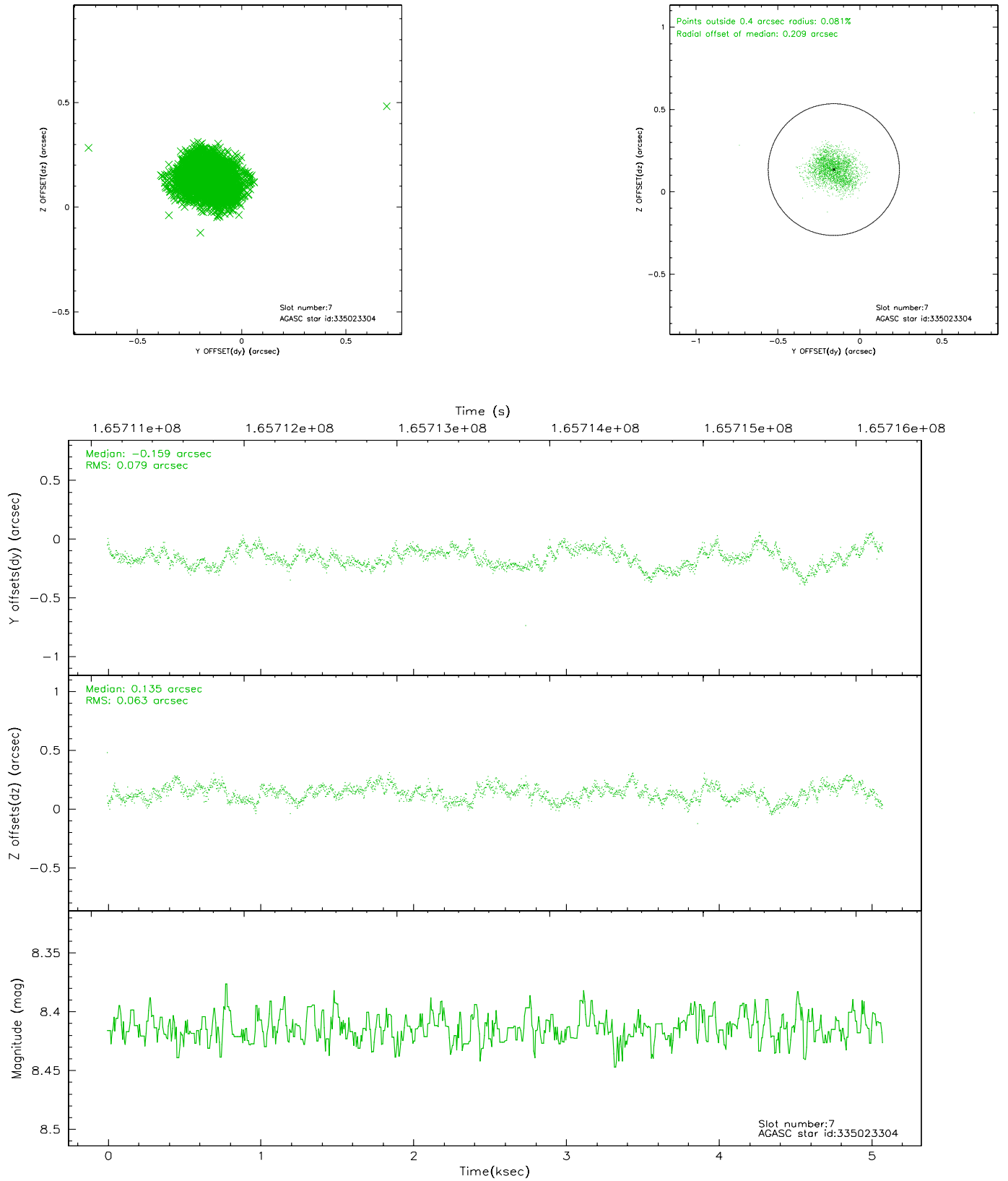
### 2.4.3 Slot 5



## 2.4.4 Slot 6

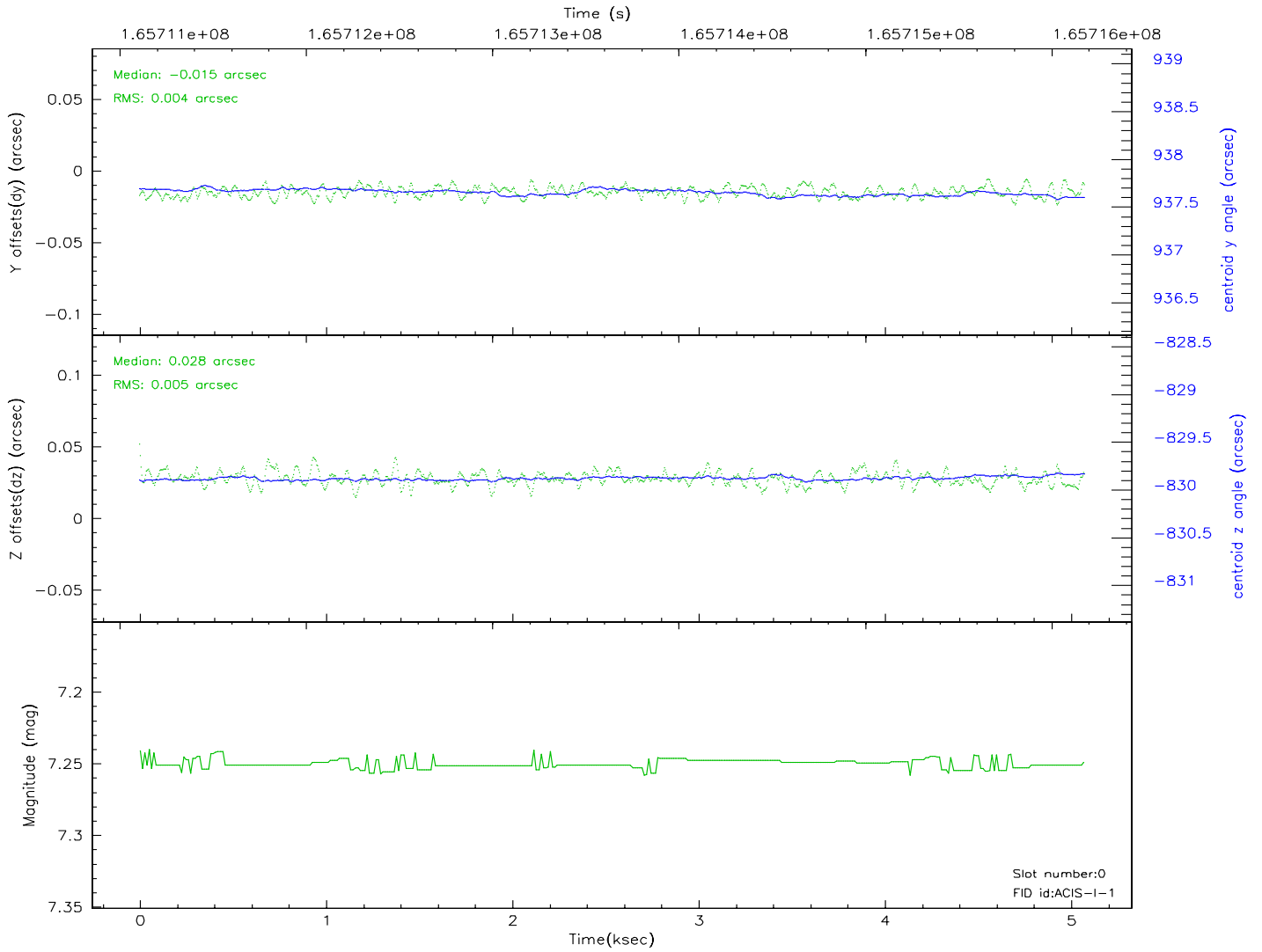
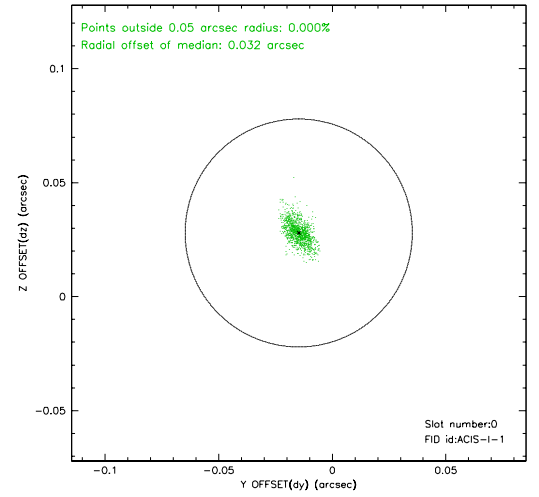
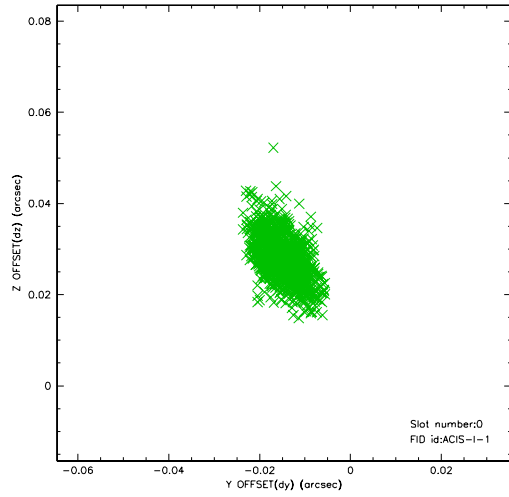


## 2.4.5 Slot 7

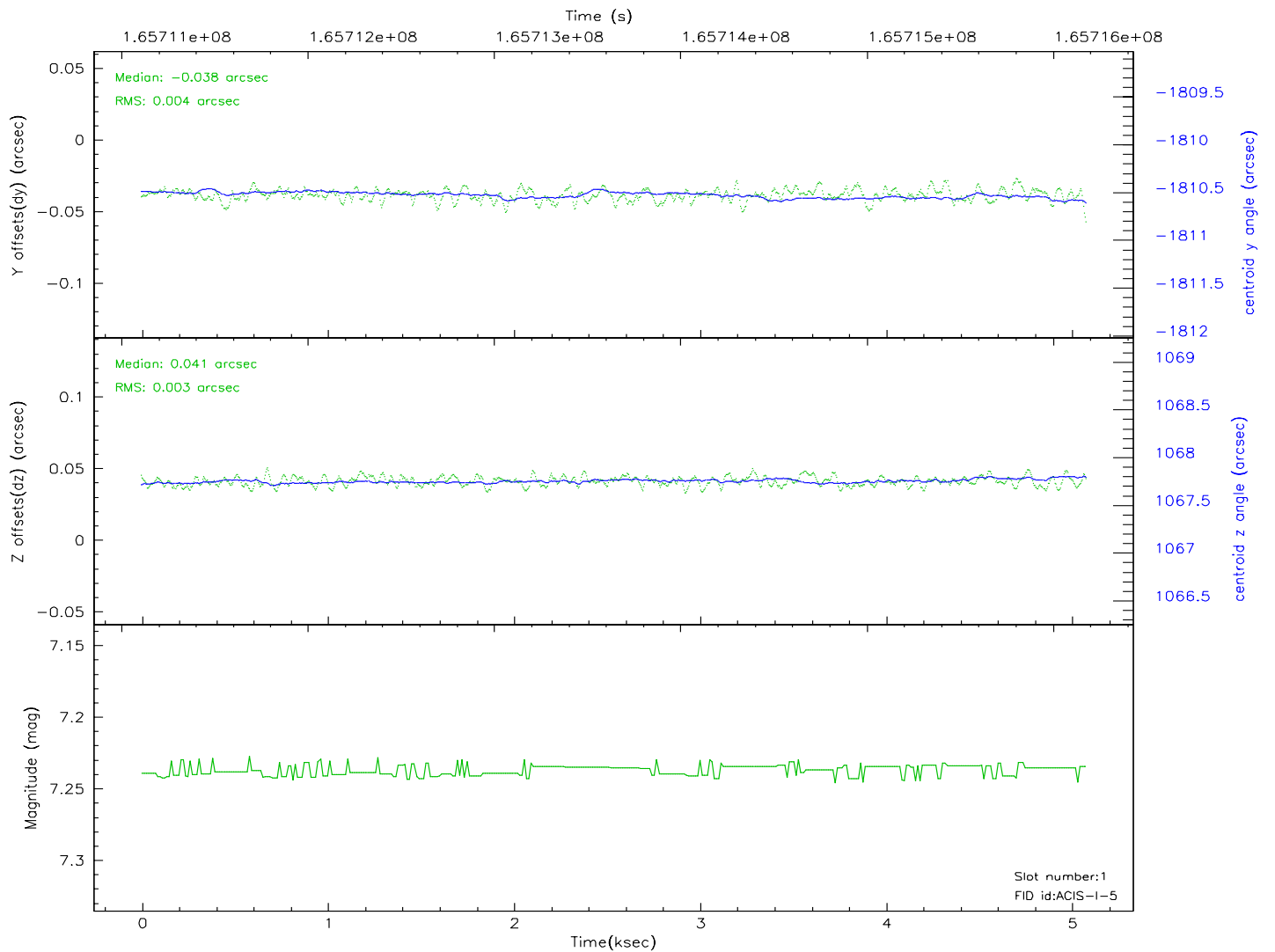
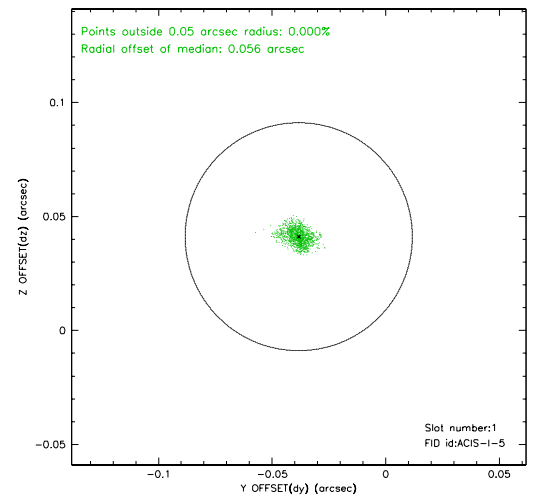
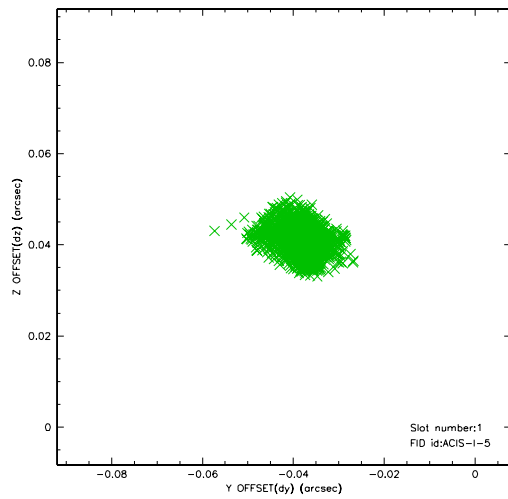


## 2.5 FID Slots

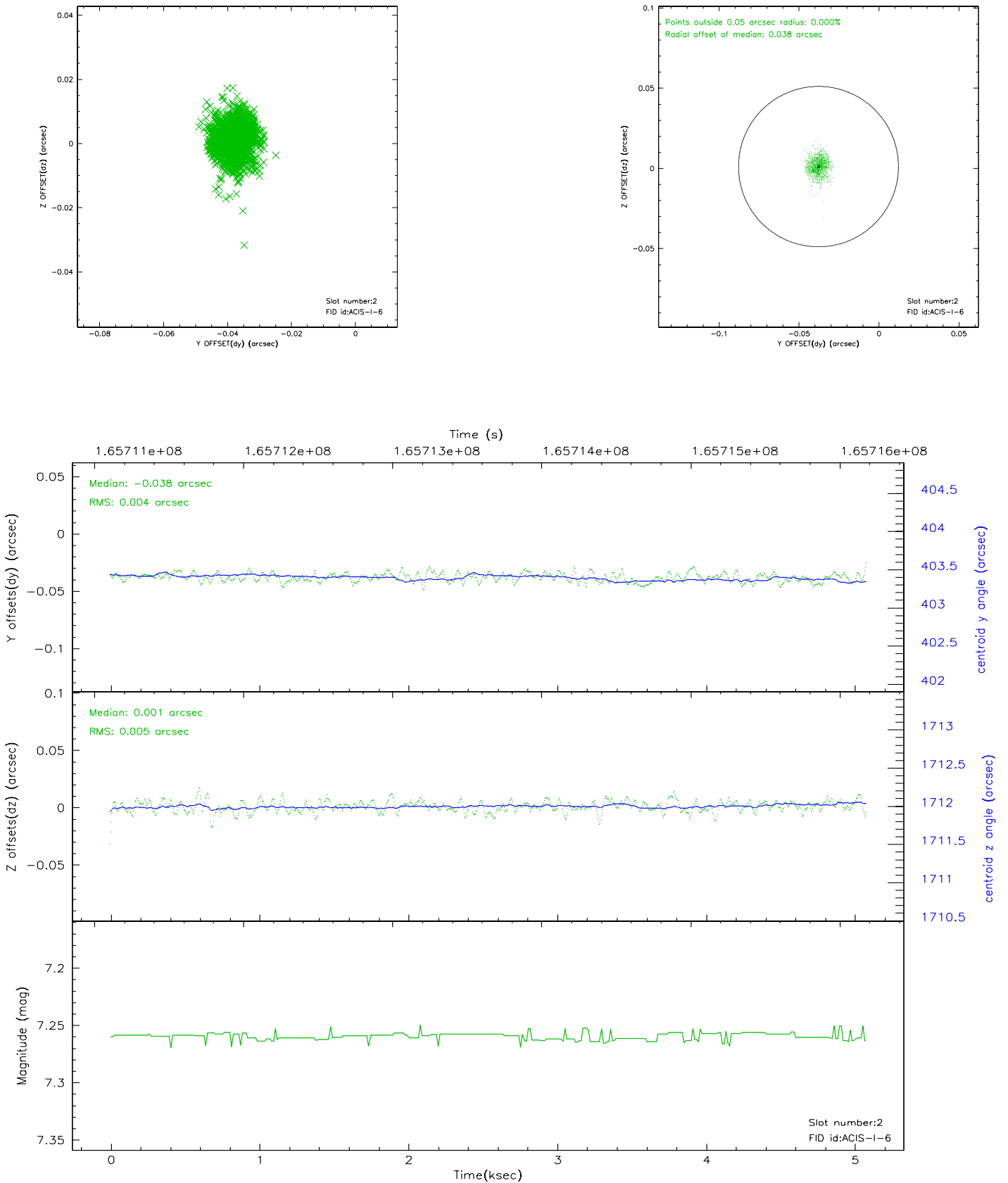
### 2.5.1 Slot 0



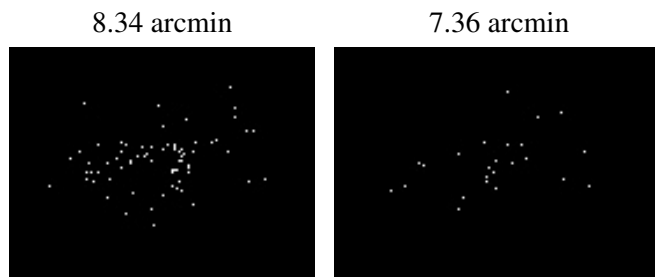
## 2.5.2 Slot 1



### 2.5.3 Slot 2



### 3 Point Sources



## A Summary

### A.1 Status

V&V Scientist	Jen Lauer
V&V Date (YYYY-MM-DD)	2006.07.30
V&V Edition	1
V&V Disposition and Status	OK
V&V Charge Time	4.675

### A.2 Comments