

# V&V Reference Report

## L2 ASCDS Version : 7.6.8

Observation 3659 - L2 Version 001  
Chandra X-Ray Center

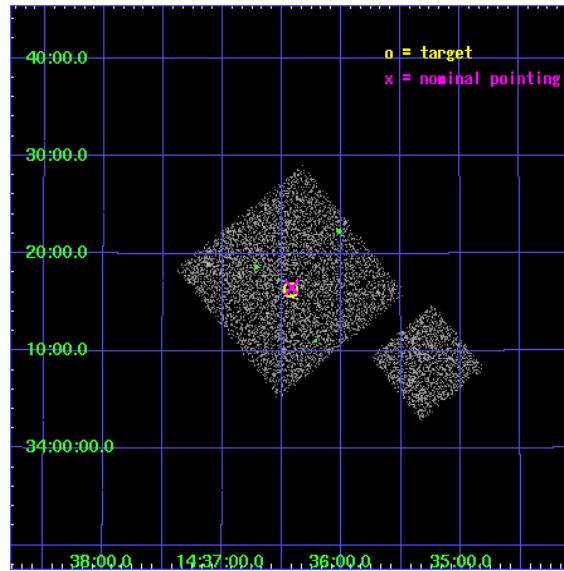
L2 Processing Date : Jul 30 2006

## Contents

<b>1</b>	<b>Front</b>	<b>2</b>
<b>2</b>	<b>OBI</b>	<b>3</b>
2.1	OBI . . . . .	3
2.1.1	Images . . . . .	3
2.1.2	Bias . . . . .	3
2.1.3	Parameters . . . . .	4
2.1.4	Events . . . . .	4
2.2	Compared Parameters . . . . .	5
2.3	Aspect . . . . .	6
2.4	Star Slots . . . . .	9
2.4.1	Slot 3 . . . . .	9
2.4.2	Slot 4 . . . . .	10
2.4.3	Slot 5 . . . . .	11
2.4.4	Slot 6 . . . . .	12
2.4.5	Slot 7 . . . . .	13
2.5	FID Slots . . . . .	14
2.5.1	Slot 0 . . . . .	14
2.5.2	Slot 1 . . . . .	15
2.5.3	Slot 2 . . . . .	16
<b>3</b>	<b>Point Sources</b>	<b>17</b>
<b>A</b>	<b>Summary</b>	<b>18</b>
A.1	Status . . . . .	18
A.2	Comments . . . . .	18

# 1 Front

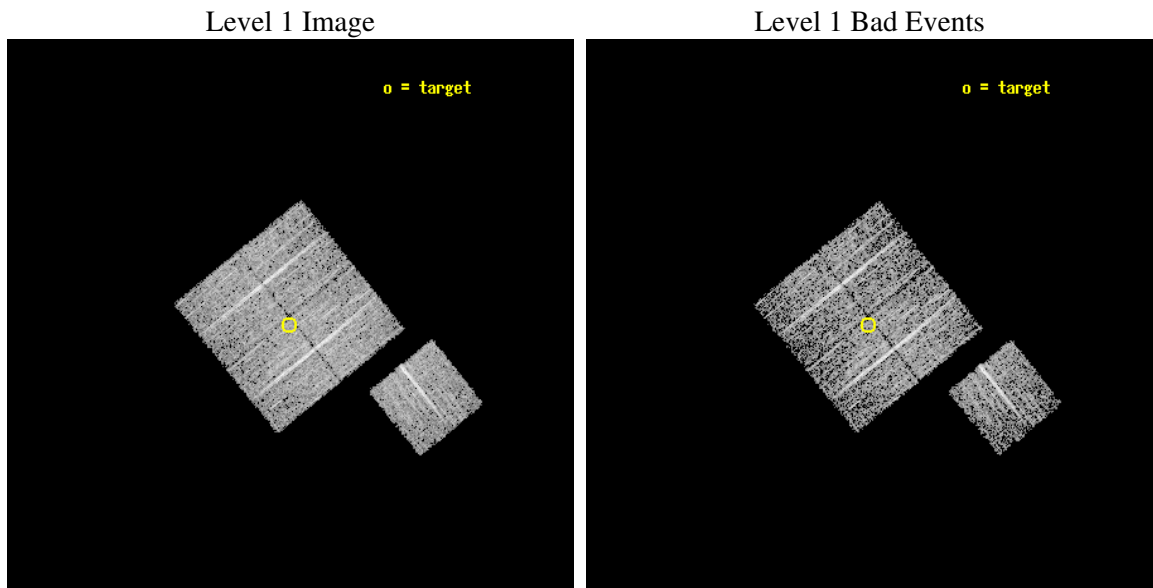
seq_num	900259
obs_id	3659
title	CHANDRA LARGE SCALE SURVEY OF THE NOAO BOOTES DEEP FIELD
observer	Dr. Stephen Murray
object	NOAO FIELD F55
dtcycle	0
cycle	P
ra_targ	219.106748
dec_targ	34.271694
ra_nom	219.1039862905
dec_nom	34.27571723837
roll_nom	141.01034034831
revision	2
ontime	4777.0999908149
livetime	4714.6836625851
ontime0	4777.0999908149
ontime1	4777.0999908149
ontime2	4777.0999908149
ontime3	4777.0999908149
ontime6	4777.0999908149
l2events	9878



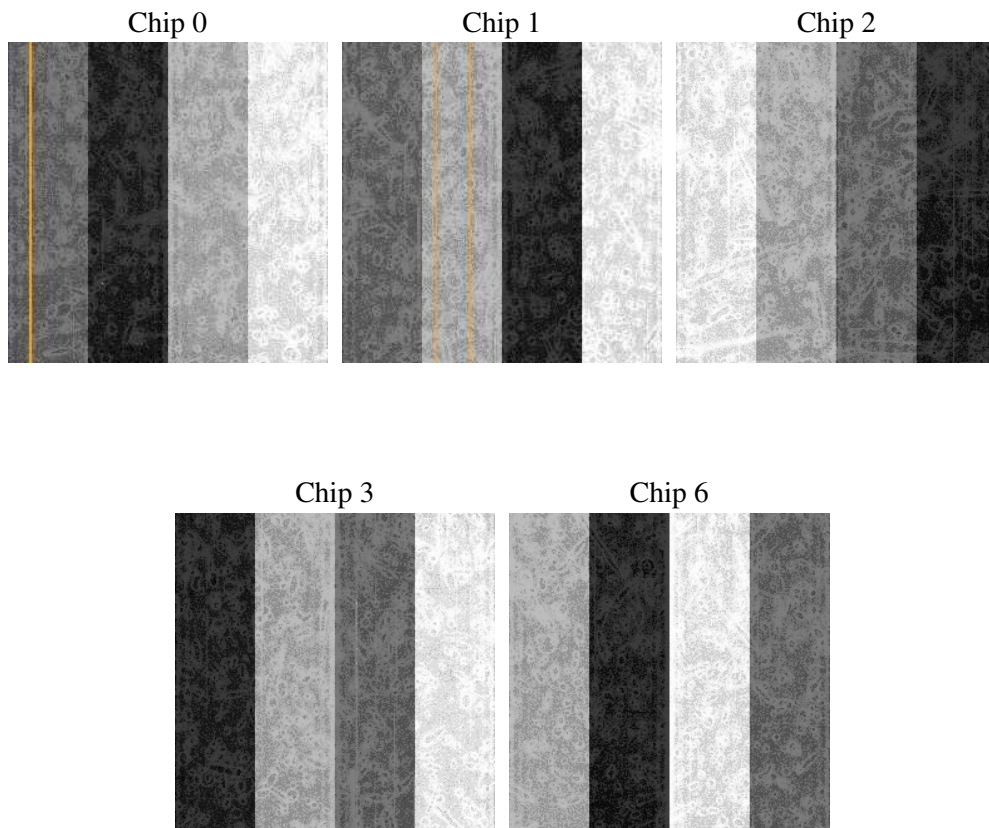
## 2 OBI

### 2.1 OBI

#### 2.1.1 Images



#### 2.1.2 Bias



### 2.1.3 Parameters

obi_num	1
ascdsver	7.6.8
caldsver	3.2.2
date	2006-07-30T04:30:01
revision	2

sched_exp_time	5000.000000
ontime	4780.6132816076
ontime0	4780.6132318079
ontime1	4780.6132816076
ontime2	4780.6132516861
ontime3	4780.6132816076
ontime6	4780.6132816076
l1events	121142

### 2.1.4 Events

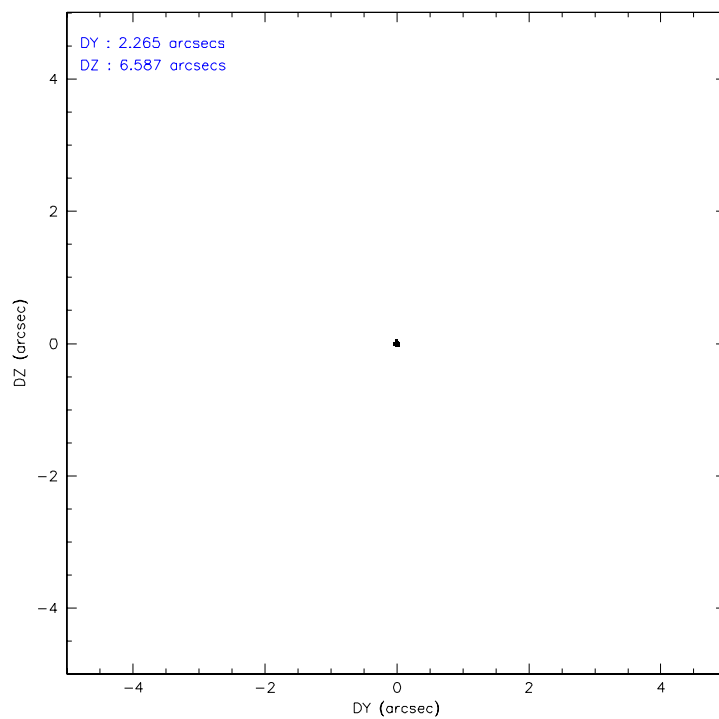
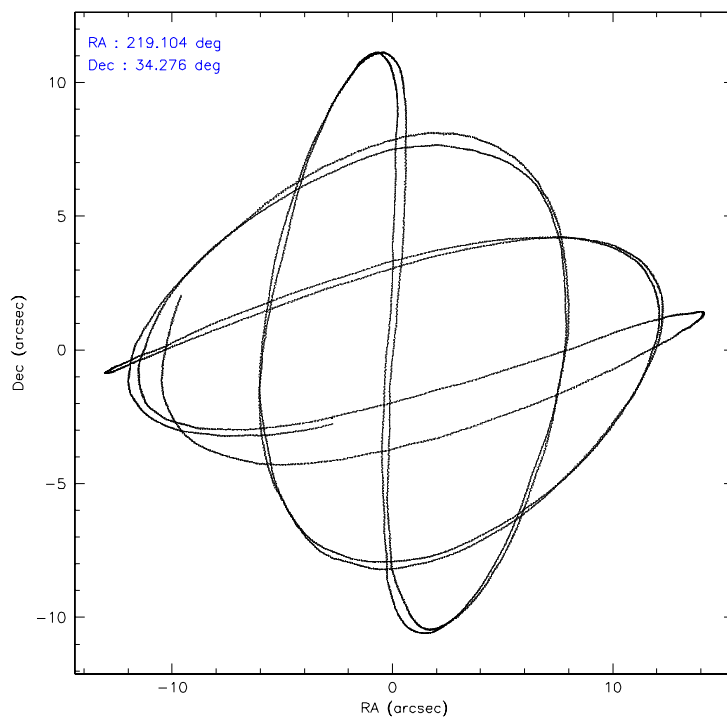
	ccd 0	ccd 1	ccd 2	ccd 3	ccd 6
level 1 events	23540	23208	26268	24881	23245
rejected events	21077	20527	24008	22705	20755
rejected %	89%	88%	91%	91%	89%

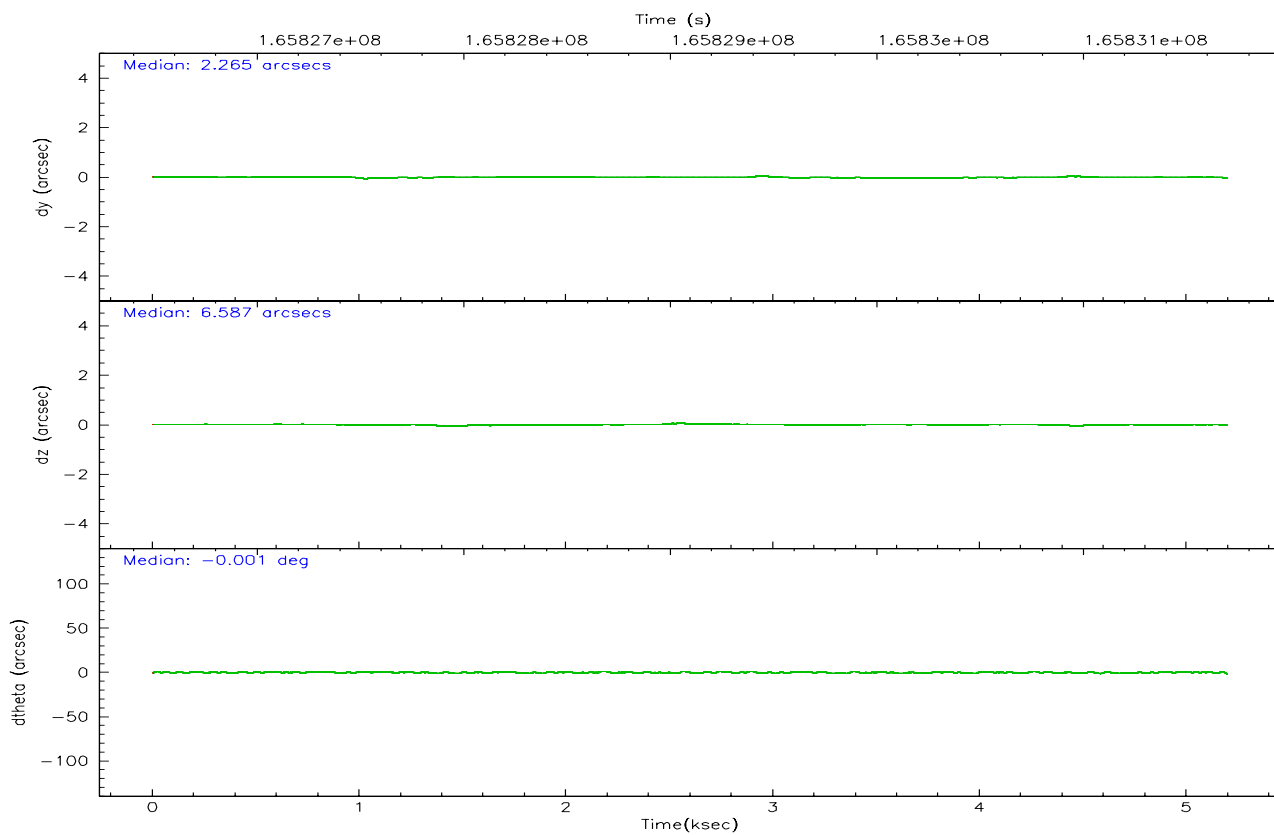
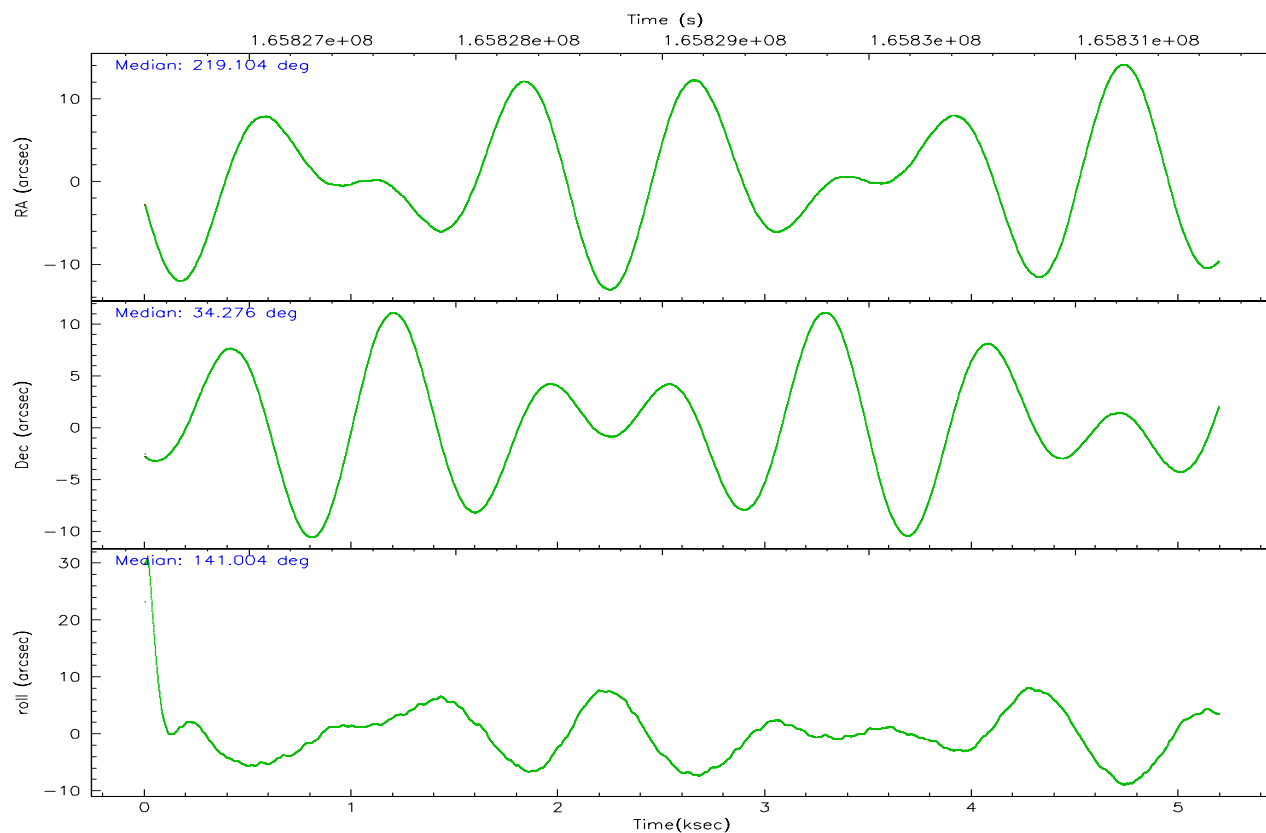
	ccd 0	ccd 1	ccd 2	ccd 3	ccd 6
grade 0 events	911	1060	871	803	908
	3%	4%	3%	3%	3%
grade 1 events	13	9	7	15	9
	0%	0%	0%	0%	0%
grade 2 events	535	572	485	447	483
	2%	2%	1%	1%	2%
grade 3 events	305	272	259	232	328
	1%	1%	0%	0%	1%
grade 4 events	275	283	250	260	268
	1%	1%	0%	1%	1%
grade 5 events	722	761	650	753	820
	3%	3%	2%	3%	3%
grade 6 events	439	494	398	437	505
	1%	2%	1%	1%	2%
grade 7 events	20340	19757	23348	21934	19924
	86%	85%	88%	88%	85%

## 2.2 Compared Parameters

Parameter	Planned	Actual	Parameter	Planned	Actual
Instrument	ACIS	ACIS	Obspar format version number	6	6
Detector	ACIS-01236	ACIS-01236	Obspar file type	PREDICTED	ACTUAL
Grating	NONE	NONE	Obspar update status	NONE	UPDATED
Data mode	VFAINT	VFAINT	On-chip summing requested	N	N
Observation mode	POINTING	POINTING	Subarray requested	NONE	NONE
Pointing RA	219.136863	219.1039862904964	Alternating exposures requested	N	N
Pointing Dec	34.271610	34.27571723836998	Primary exposure time	0.000000	3.1
Pointing Roll	140.783040	141.0103403483095			
SIM focus pos (mm)	-0.782348	-0.7809083437167272			
SIM defocus (mm)	0	0.001439871863259334			
SIM translation stage pos (mm)	-233.592463	-233.5874344608287			
SIM translation stage offset (mm)	0	-0.005018542100998502			
Observation start time	165826695.184000	165826319.36832			
Observation start date	2003-04-04T06:57:11	2003-04-04T06:51:59			
Observation end time	165831695.184000	165831829.25605			
Observation end date	2003-04-04T08:20:31	2003-04-04T08:23:49			
Read mode	TIMED	TIMED			

## 2.3 Aspect





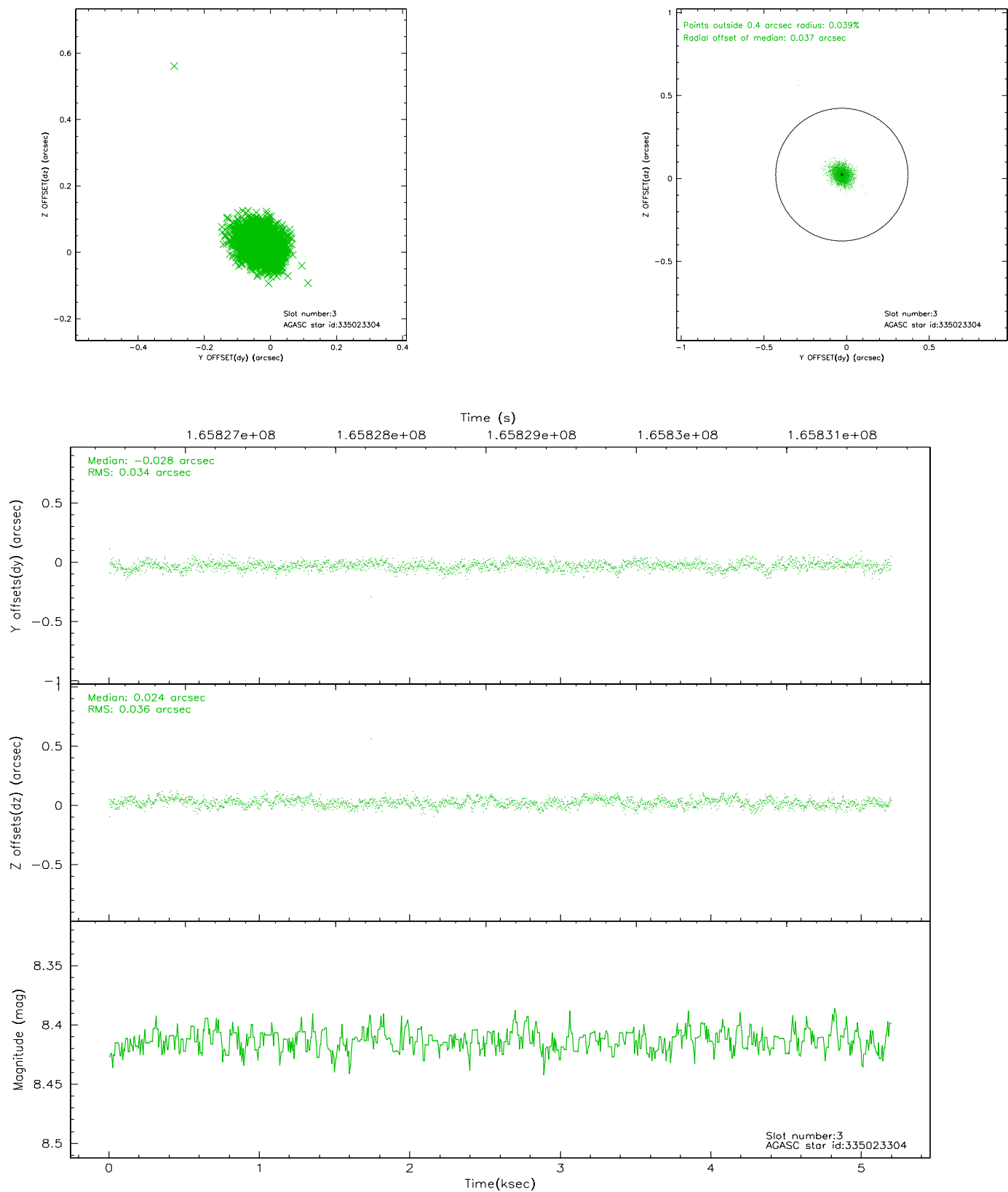
### Slot Statistics

slot	status	id	mag	n_pts	med_dy	med_dz	dr1	dr2	ra	dec	mean_y	mean_z
0	FID	ACIS-I-1	7.25	1268	-0.008	0.021	0.006	0.009	0.000000	0.000000	937.53	-829.97
1	FID	ACIS-I-5	7.24	1268	-0.048	0.045	0.005	0.009	0.000000	0.000000	-1809.93	1067.02
2	FID	ACIS-I-6	7.26	1267	-0.036	0.004	0.006	0.010	0.000000	0.000000	401.83	1712.76
3	GUIDE	335023304	8.41	2533	-0.028	0.024	0.051	0.083	218.883608	34.686545	1525.90	-683.97
4	GUIDE	335152784	7.22	2535	0.009	-0.141	0.058	0.091	219.280617	33.678221	-1683.79	1381.86
5	GUIDE	335155824	8.92	2535	0.051	0.096	0.068	0.108	219.689900	34.035435	-1813.58	-387.57
6	GUIDE	335157088	9.09	2535	0.070	-0.045	0.075	0.120	219.274029	33.726909	-1558.72	1258.92
7	GUIDE	335414336	8.98	2534	-0.104	0.064	0.085	0.141	218.979022	35.090910	2224.85	-1990.83

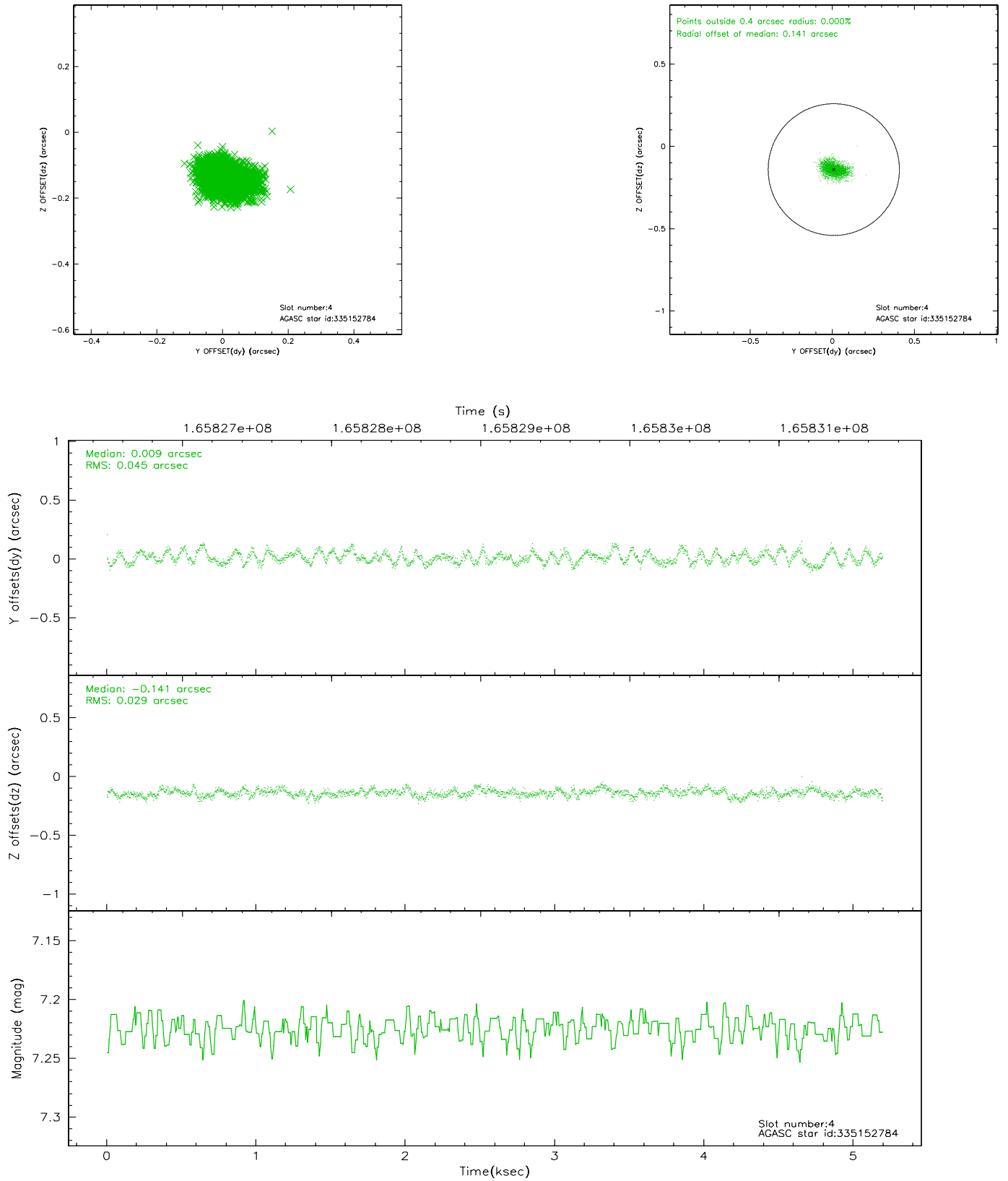


## 2.4 Star Slots

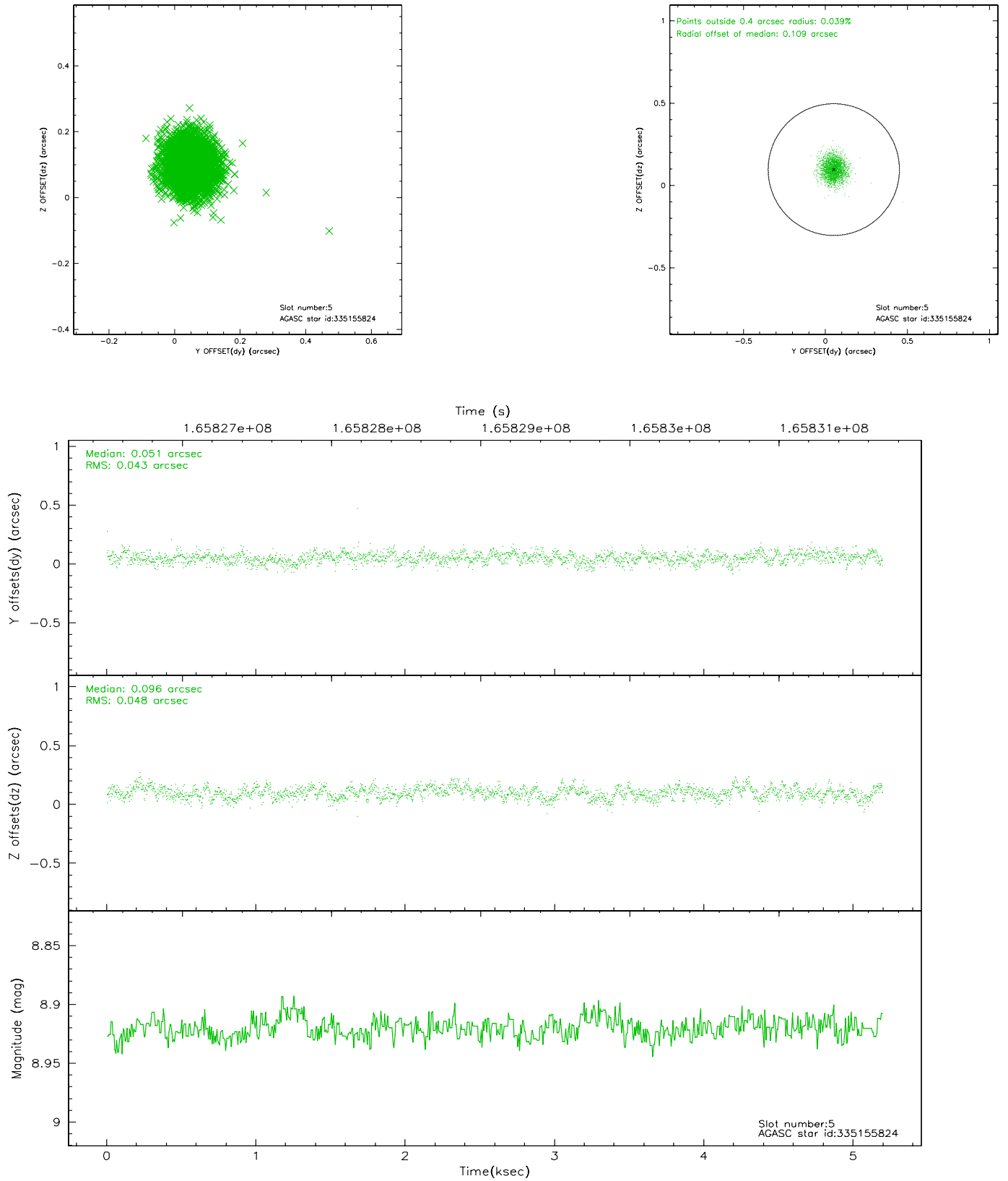
### 2.4.1 Slot 3



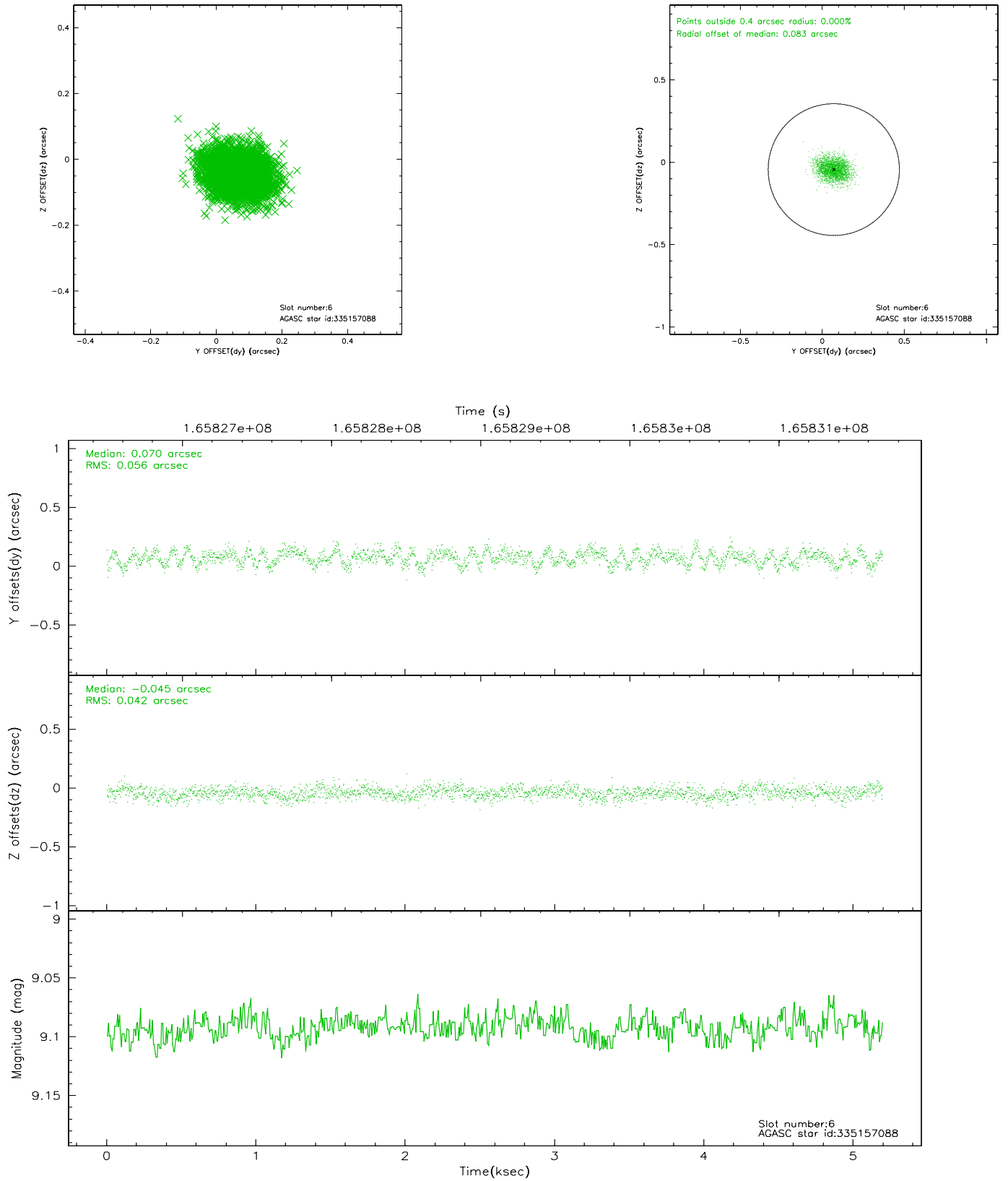
## 2.4.2 Slot 4



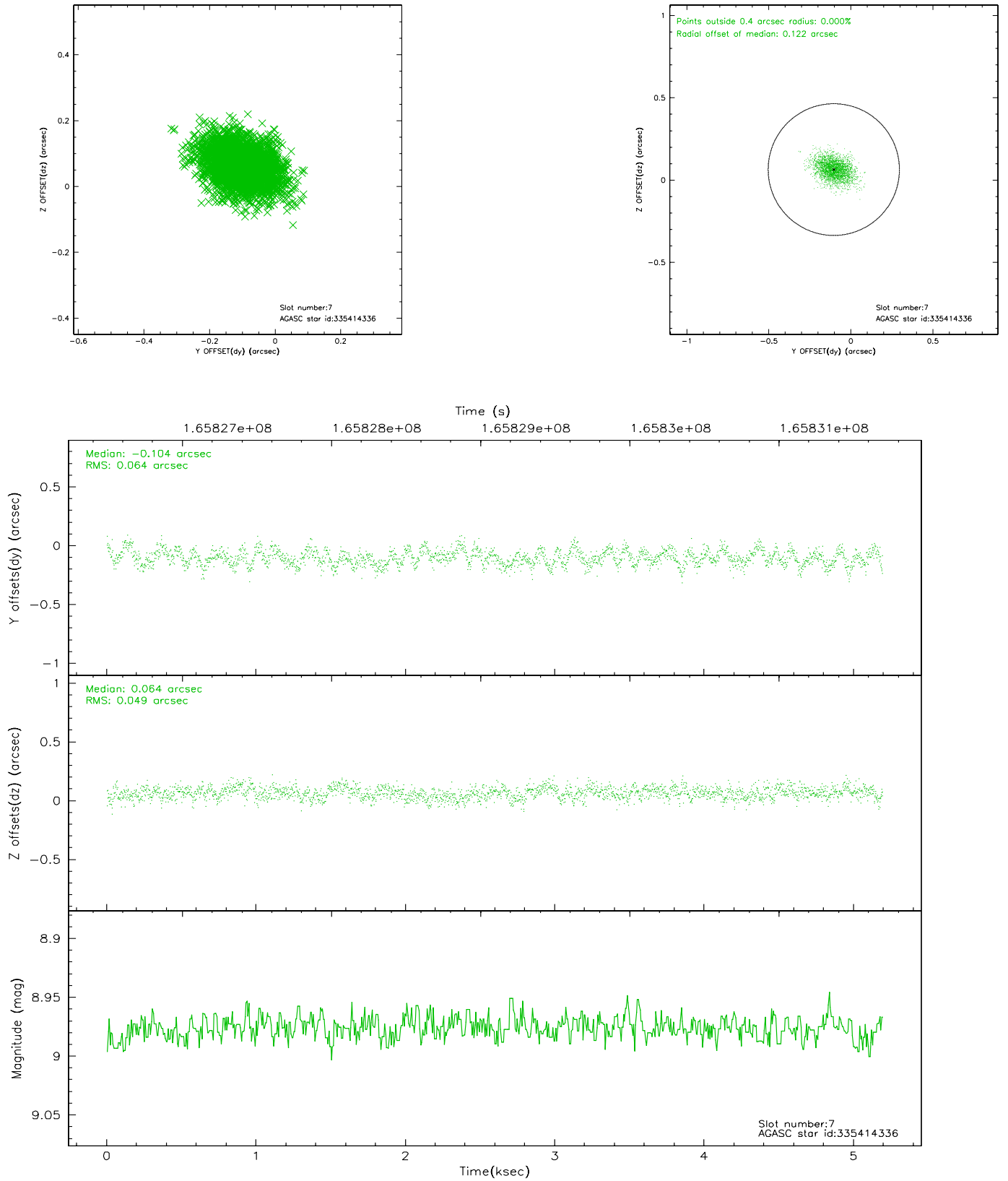
### 2.4.3 Slot 5



## 2.4.4 Slot 6

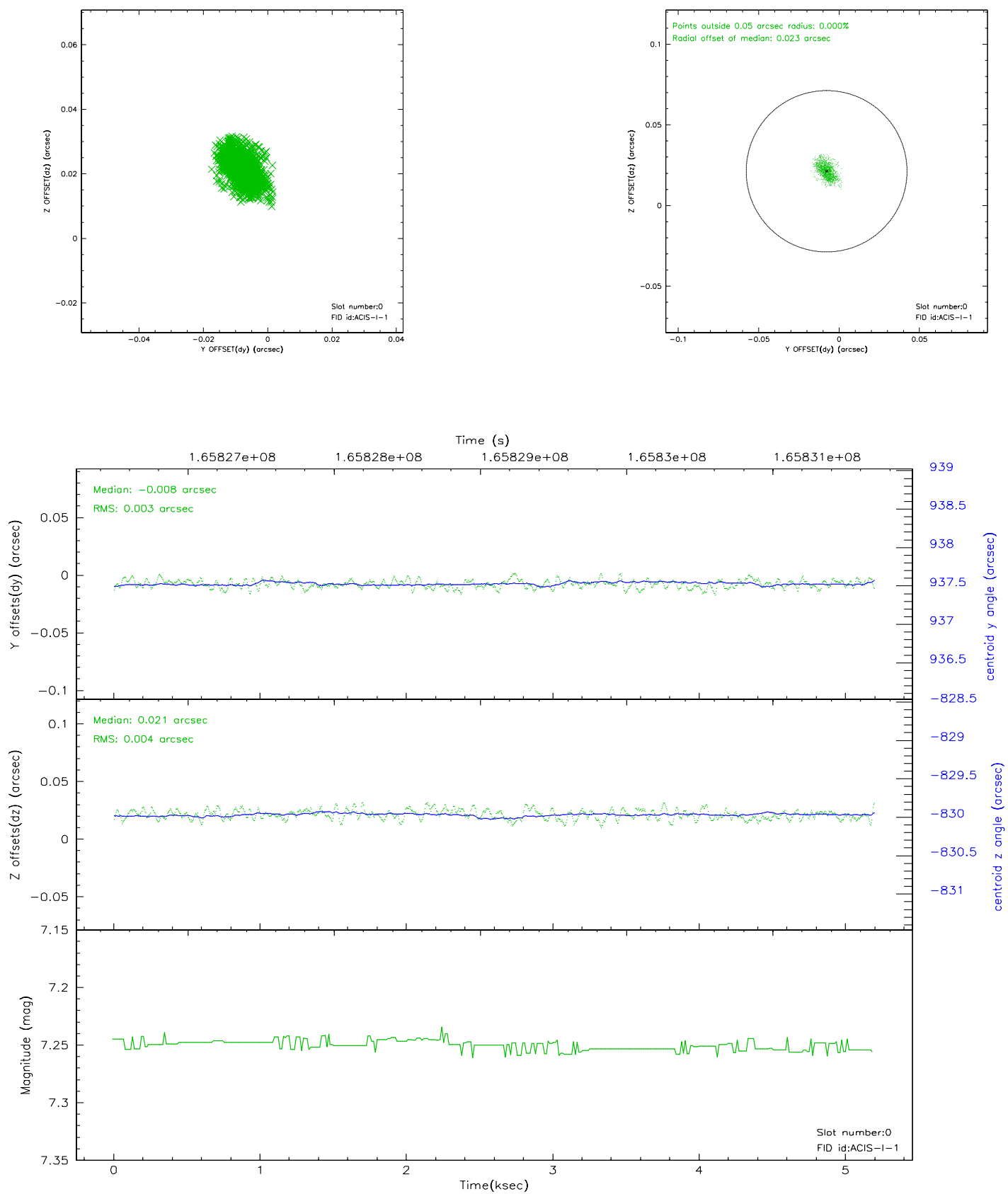


## 2.4.5 Slot 7

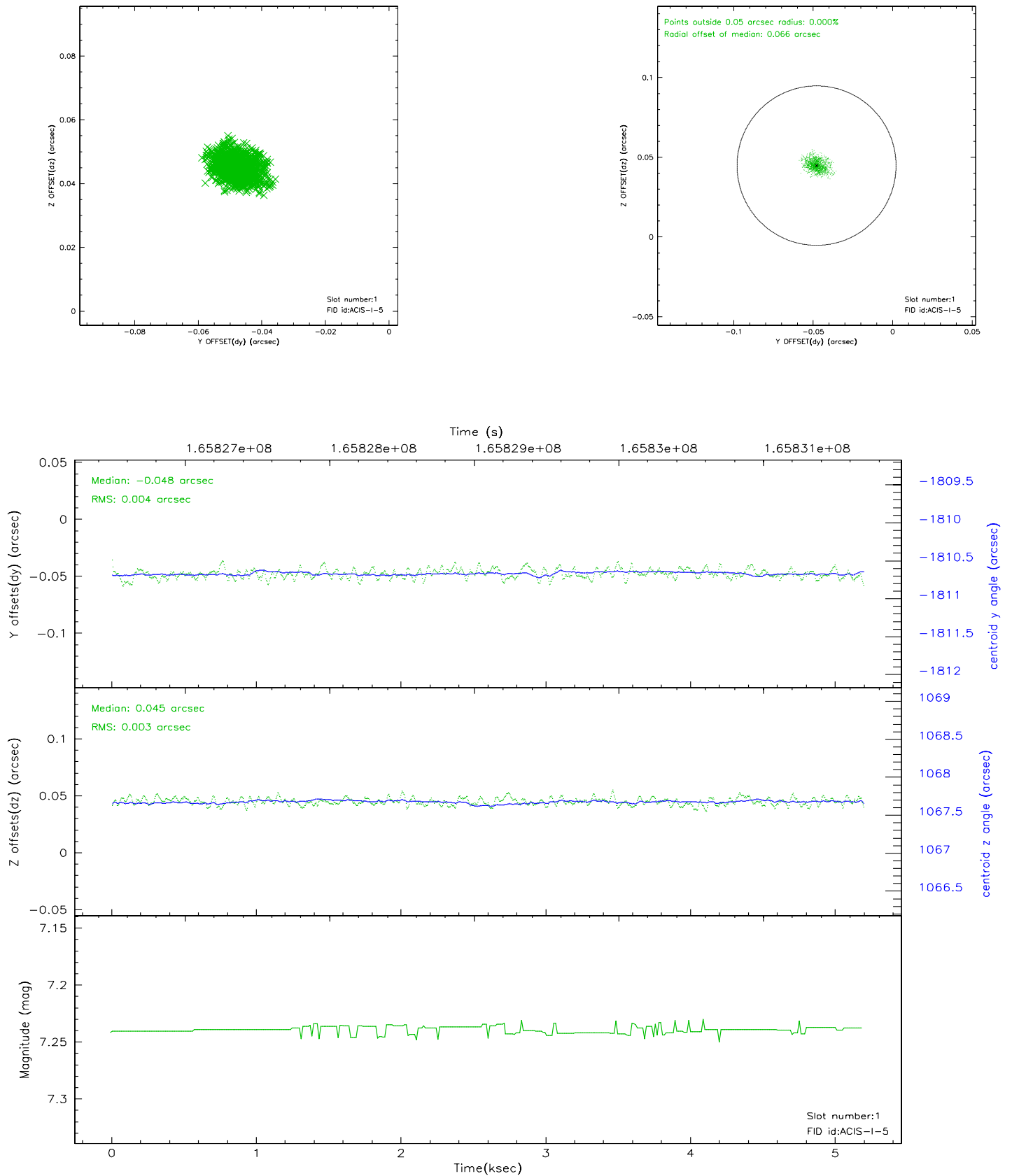


## 2.5 FID Slots

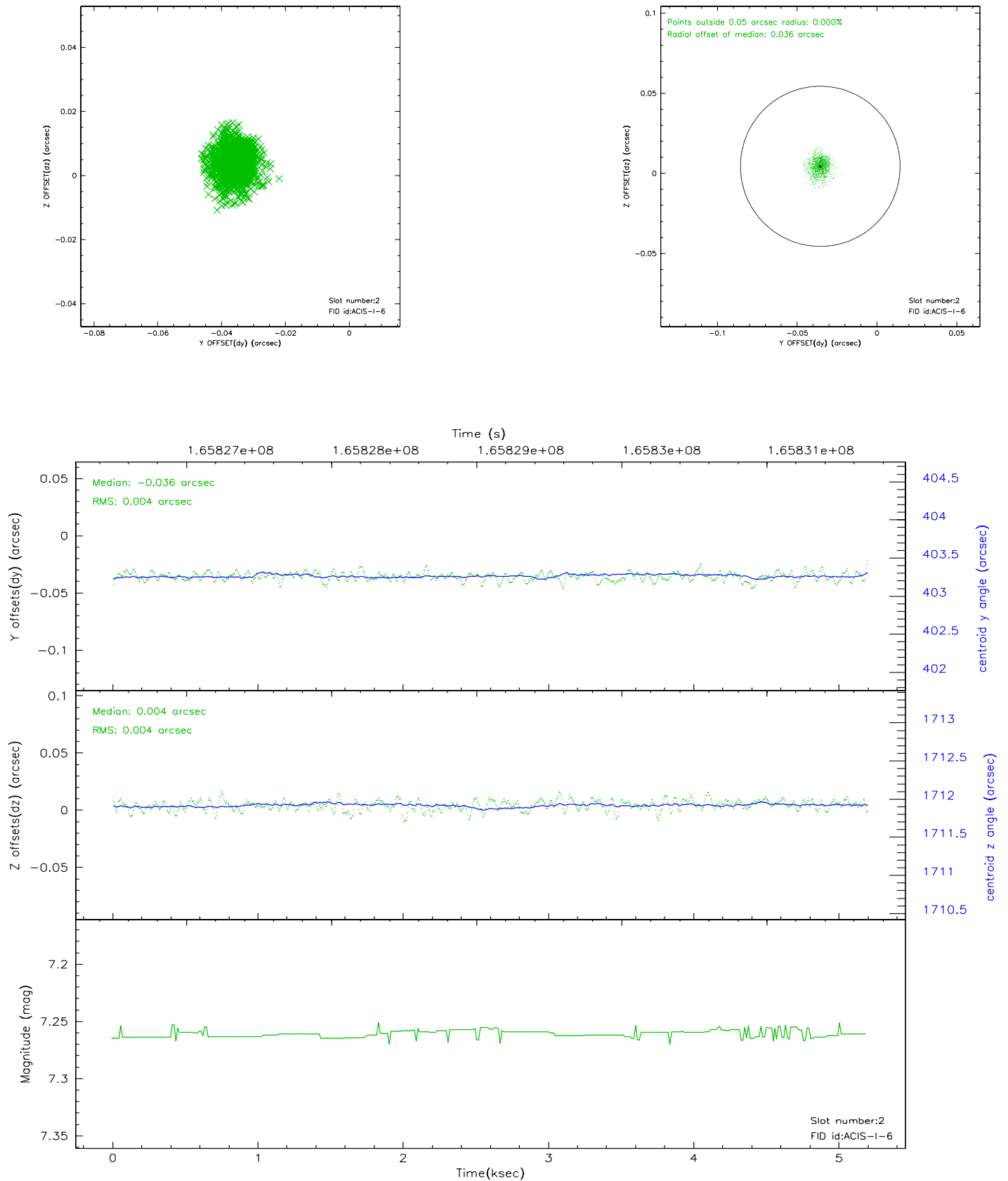
### 2.5.1 Slot 0



## 2.5.2 Slot 1

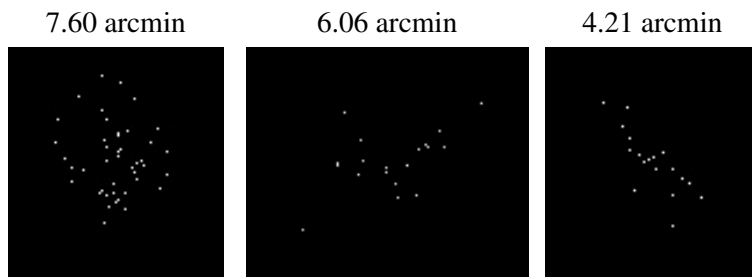


### 2.5.3 Slot 2





### 3 Point Sources



## A Summary

### A.1 Status

V&V Scientist	Jen Lauer
V&V Date (YYYY-MM-DD)	2006.07.30
V&V Edition	1
V&V Disposition and Status	OK
V&V Charge Time	4.777

### A.2 Comments