

# V&V Reference Report

## L2 ASCDS Version : 7.6.8

Observation 3657 - L2 Version 001  
Chandra X-Ray Center

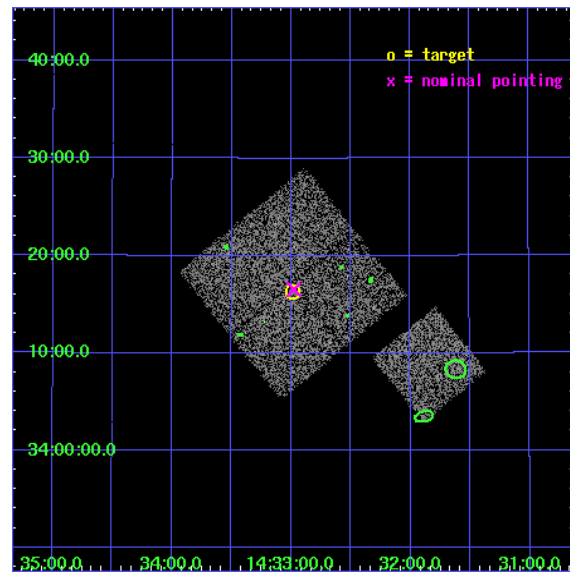
L2 Processing Date : Jul 29 2006

## Contents

<b>1</b>	<b>Front</b>	<b>2</b>
<b>2</b>	<b>OBI</b>	<b>3</b>
2.1	OBI . . . . .	3
2.1.1	Images . . . . .	3
2.1.2	Bias . . . . .	3
2.1.3	Parameters . . . . .	4
2.1.4	Events . . . . .	4
2.2	Compared Parameters . . . . .	5
2.3	Aspect . . . . .	6
2.4	Star Slots . . . . .	9
2.4.1	Slot 3 . . . . .	9
2.4.2	Slot 4 . . . . .	10
2.4.3	Slot 5 . . . . .	11
2.4.4	Slot 6 . . . . .	12
2.4.5	Slot 7 . . . . .	13
2.5	FID Slots . . . . .	14
2.5.1	Slot 0 . . . . .	14
2.5.2	Slot 1 . . . . .	15
2.5.3	Slot 2 . . . . .	16
<b>3</b>	<b>Point Sources</b>	<b>17</b>
<b>A</b>	<b>Summary</b>	<b>18</b>
A.1	Status . . . . .	18
A.2	Comments . . . . .	18

# 1 Front

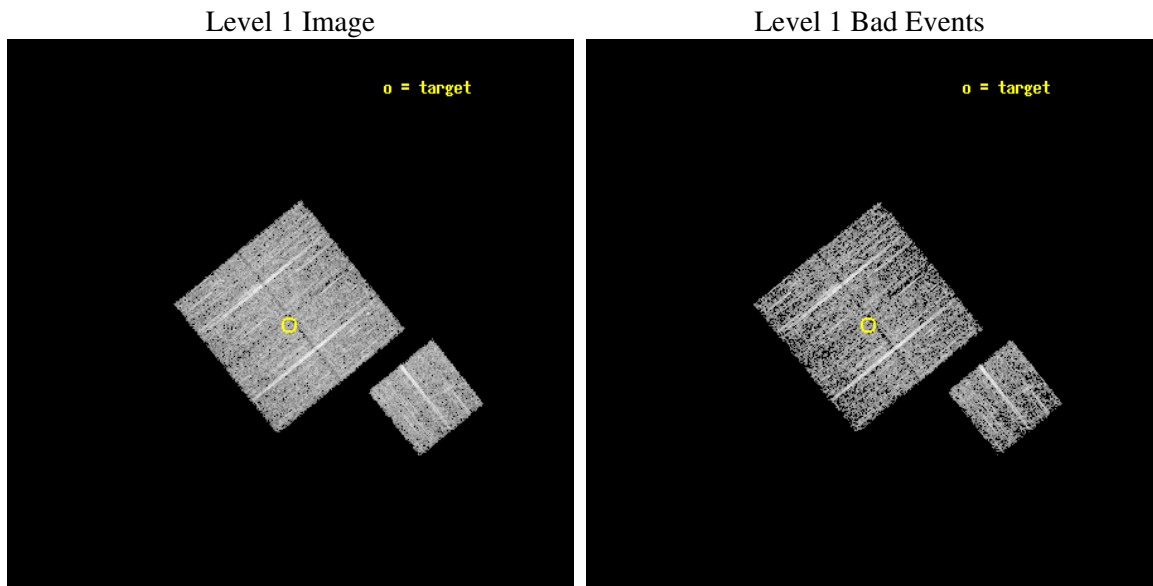
seq_num	900257
obs_id	3657
title	CHANDRA LARGE SCALE SURVEY OF THE NOAO BOOTES DEEP FIELD
observer	Dr. Stephen Murray
object	NOAO FIELD F33
dtcycle	0
cycle	P
ra_targ	218.246914
dec_targ	34.271694
ra_nom	218.24424438814
dec_nom	34.275841870788
roll_nom	141.01021667603
revision	2
ontime	4777.0999908149
livetime	4714.6836625851
ontime0	4777.0999908149
ontime1	4777.0999908149
ontime2	4777.0999908149
ontime3	4777.0999908149
ontime6	4773.9590304792
l2events	19636



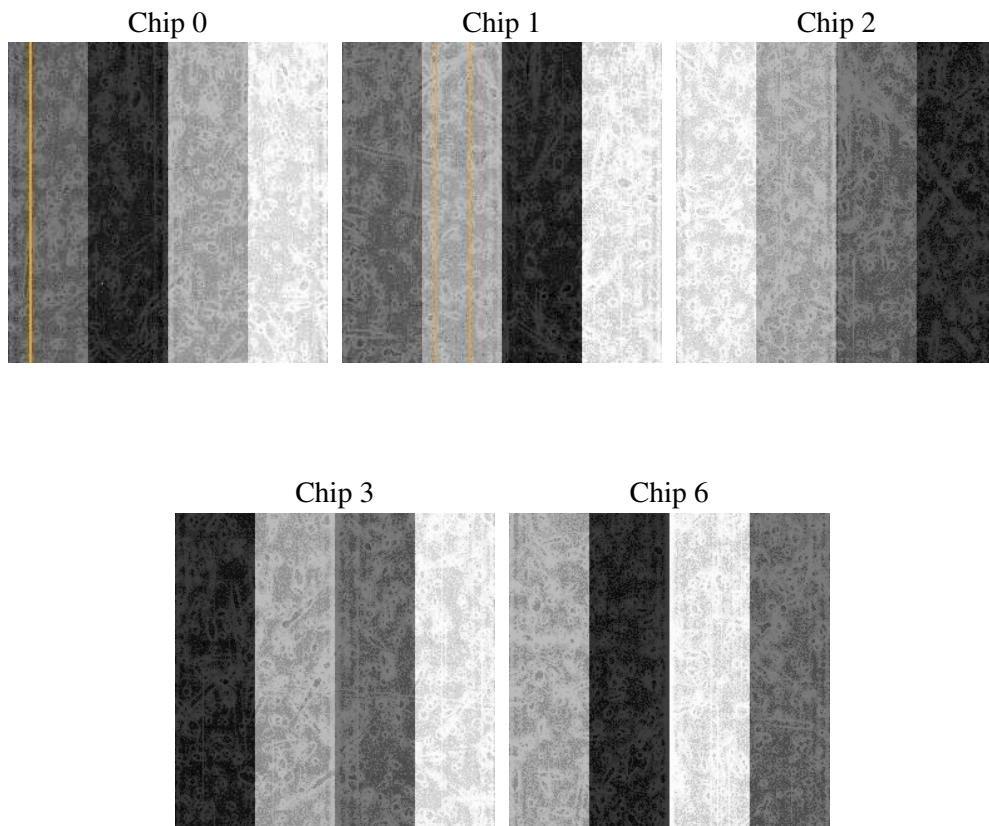
## 2 OBI

### 2.1 OBI

#### 2.1.1 Images



#### 2.1.2 Bias



### 2.1.3 Parameters

obi_num	1
ascdsver	7.6.8
caldsver	3.2.2
date	2006-07-29T22:59:11
revision	2

sched_exp_time	5000.000000
ontime	4780.6166415215
ontime0	4780.6166316271
ontime1	4780.6166316271
ontime2	4780.6166415215
ontime3	4780.6166415215
ontime6	4777.4756712914
llevents	131208

### 2.1.4 Events

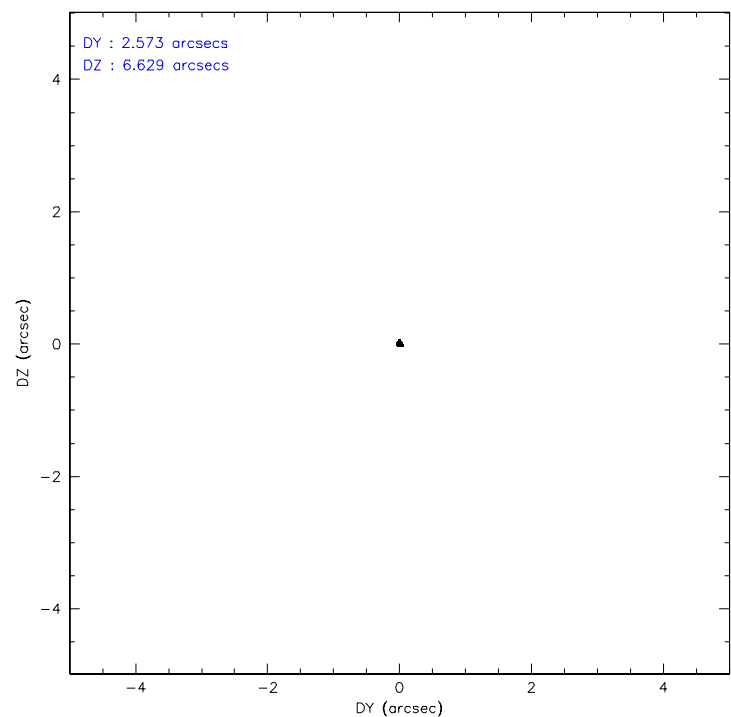
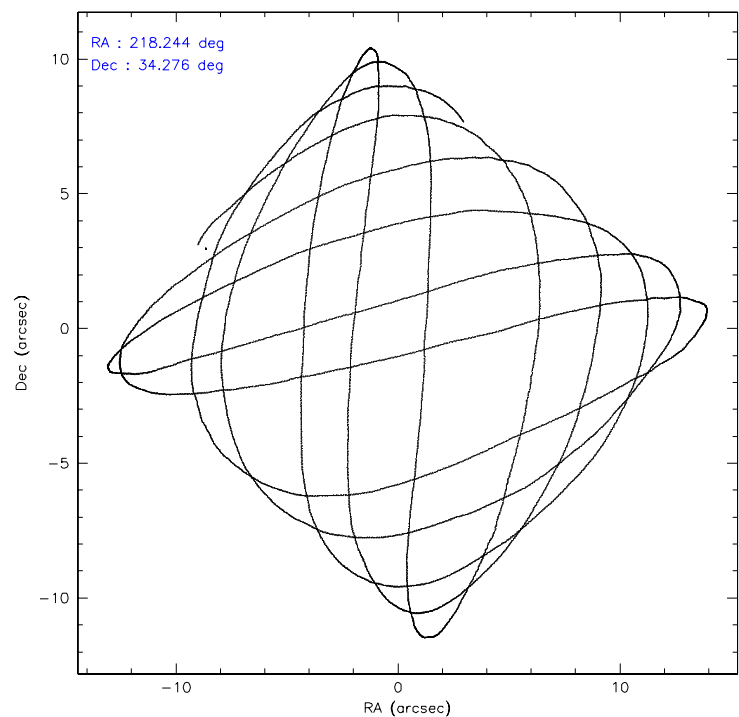
	ccd 0	ccd 1	ccd 2	ccd 3	ccd 6
level 1 events	25385	26410	27004	26005	26404
rejected events	20925	21783	22731	21755	21690
rejected %	82%	82%	84%	83%	82%

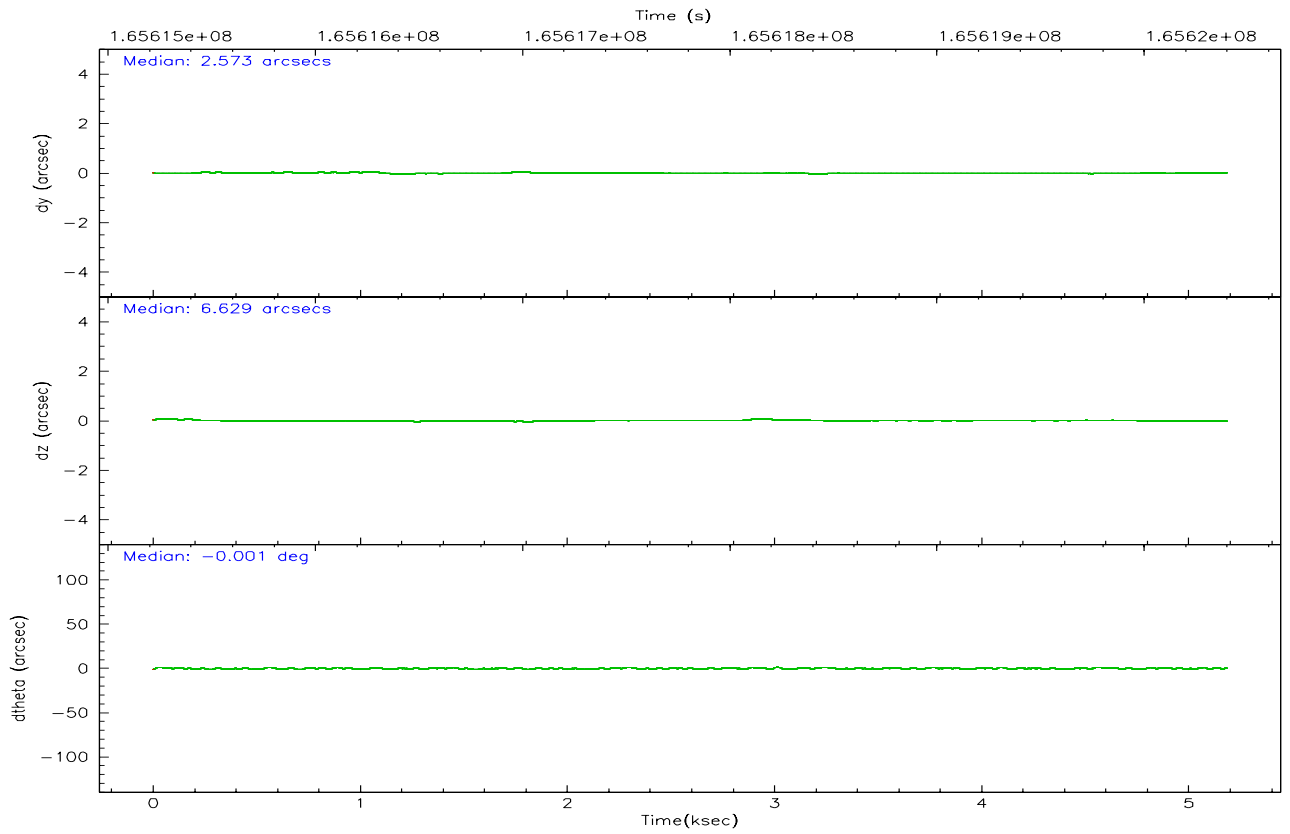
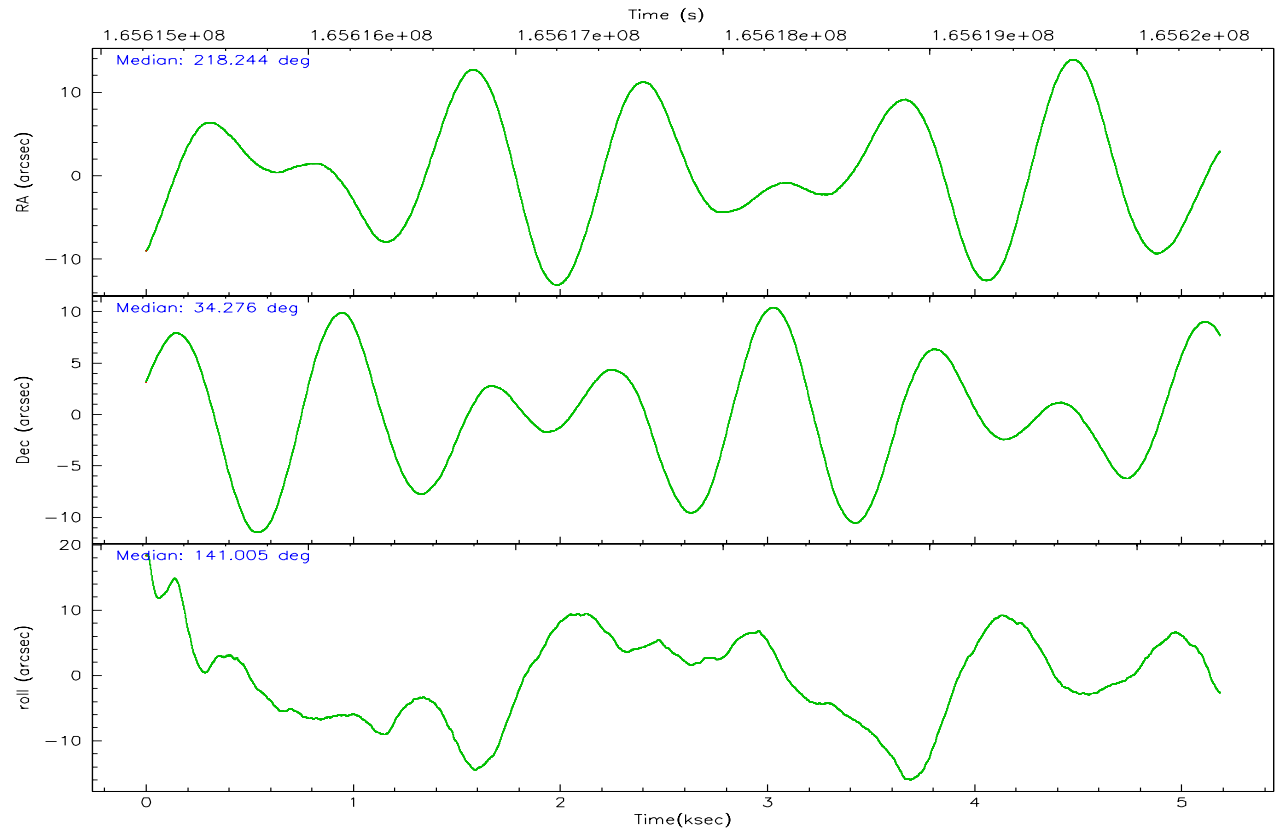
	ccd 0	ccd 1	ccd 2	ccd 3	ccd 6
grade 0 events	2190	2229	2274	2139	2396
	8%	8%	8%	8%	9%
grade 1 events	23	7	25	14	14
	0%	0%	0%	0%	0%
grade 2 events	821	807	752	731	807
	3%	3%	2%	2%	3%
grade 3 events	386	417	315	390	357
	1%	1%	1%	1%	1%
grade 4 events	388	372	336	347	350
	1%	1%	1%	1%	1%
grade 5 events	700	797	659	850	771
	2%	3%	2%	3%	2%
grade 6 events	679	803	596	647	805
	2%	3%	2%	2%	3%
grade 7 events	20198	20978	22047	20887	20904
	79%	79%	81%	80%	79%

## 2.2 Compared Parameters

Parameter	Planned	Actual	Parameter	Planned	Actual
Instrument	ACIS	ACIS	Obspar format version number	6	6
Detector	ACIS-01236	ACIS-01236	Obspar file type	PREDICTED	ACTUAL
Grating	NONE	NONE	Obspar update status	NONE	UPDATED
Data mode	VFAINT	VFAINT	On-chip summing requested	N	N
Observation mode	POINTING	POINTING	Subarray requested	NONE	NONE
Pointing RA	218.277025	218.2442443881437	Alternating exposures requested	N	N
Pointing Dec	34.271611	34.27584187078796	Primary exposure time	0.000000	3.1
Pointing Roll	140.783050	141.0102166760296			
SIM focus pos (mm)	-0.782348	-0.7809083437167272			
SIM defocus (mm)	0	0.001439871863259334			
SIM translation stage pos (mm)	-233.592463	-233.5874344608287			
SIM translation stage offset (mm)	0	-0.005018542100998502			
Observation start time	165615403.184000	165615026.8844			
Observation start date	2003-04-01T20:15:39	2003-04-01T20:10:26			
Observation end time	165620403.184000	165620536.77214			
Observation end date	2003-04-01T21:38:59	2003-04-01T21:42:16			
Read mode	TIMED	TIMED			

2.3 Aspect





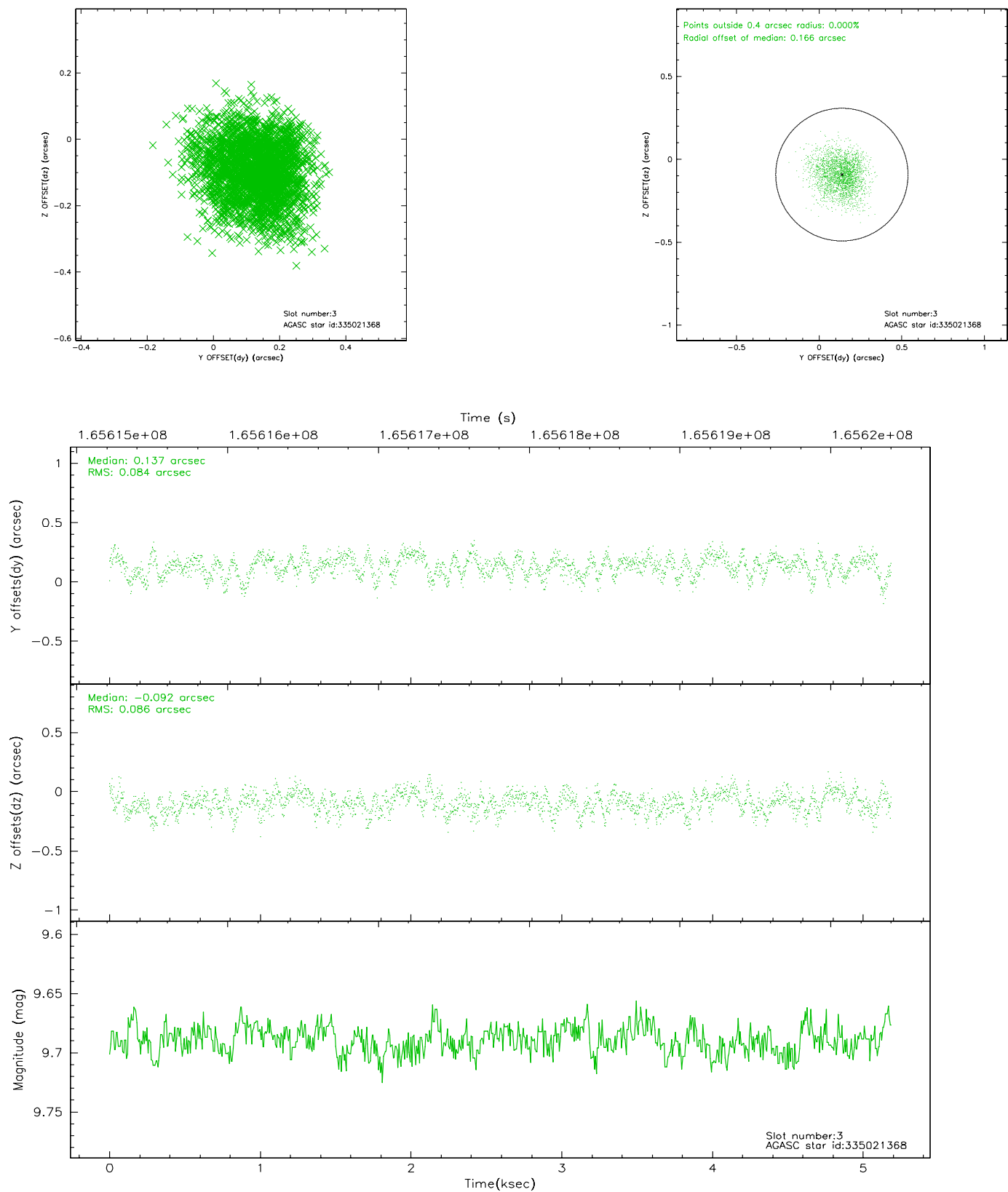
### Slot Statistics

slot	status	id	mag	n_pts	med_dy	med_dz	dr1	dr2	ra	dec	mean_y	mean_z
0	FID	ACIS-I-1	7.25	1266	-0.005	0.019	0.006	0.010	0.000000	0.000000	937.21	-830.01
1	FID	ACIS-I-5	7.24	1266	-0.053	0.046	0.006	0.010	0.000000	0.000000	-1810.26	1066.97
2	FID	ACIS-I-6	7.26	1266	-0.033	0.005	0.006	0.010	0.000000	0.000000	401.51	1712.72
3	GUIDE	335021368	9.69	2525	0.137	-0.092	0.130	0.207	217.529643	33.934817	968.18	2344.61
4	GUIDE	335023288	9.86	2529	-0.207	0.221	0.156	0.234	217.791365	34.425735	1470.59	480.75
5	GUIDE	335023304	8.41	2531	-0.146	-0.056	0.075	0.120	218.883608	34.686545	-442.58	-2296.46
6	GUIDE	335025040	9.93	2530	0.117	0.037	0.116	0.190	218.601670	34.305240	-670.30	-706.11
7	GUIDE	335020984	9.93	2449	0.113	-0.105	0.160	0.253	218.841668	33.815112	-2344.08	201.29

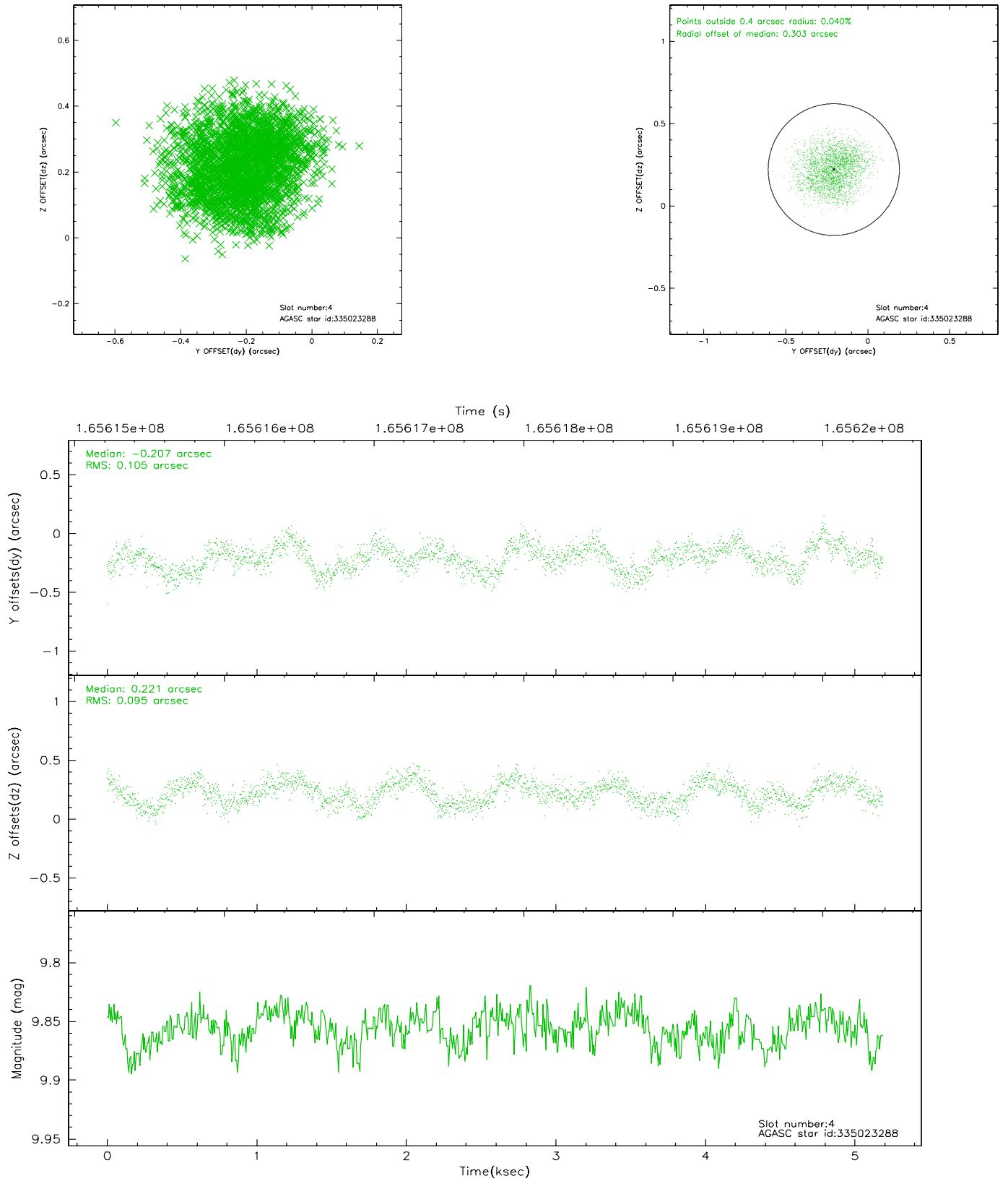


## 2.4 Star Slots

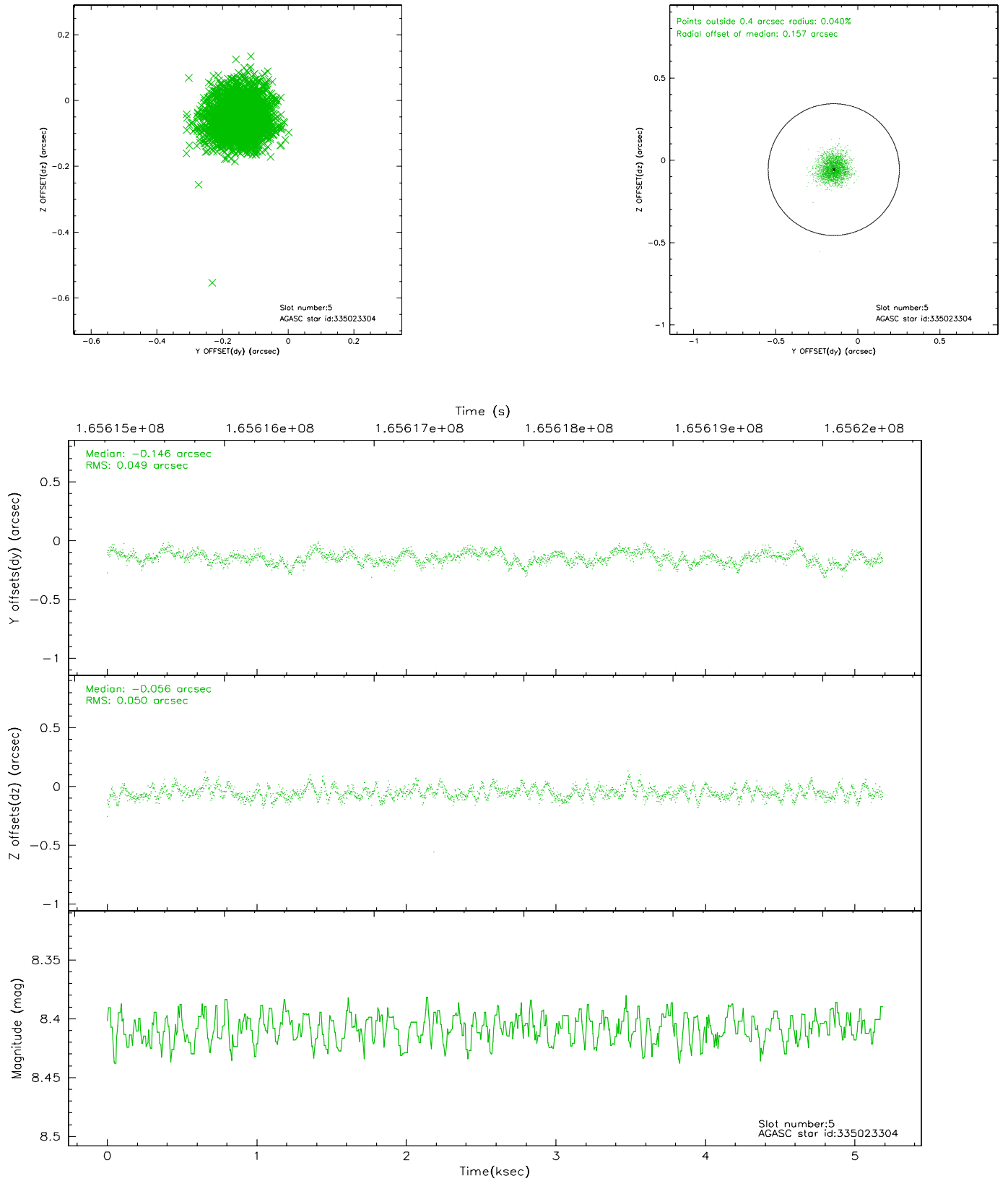
### 2.4.1 Slot 3



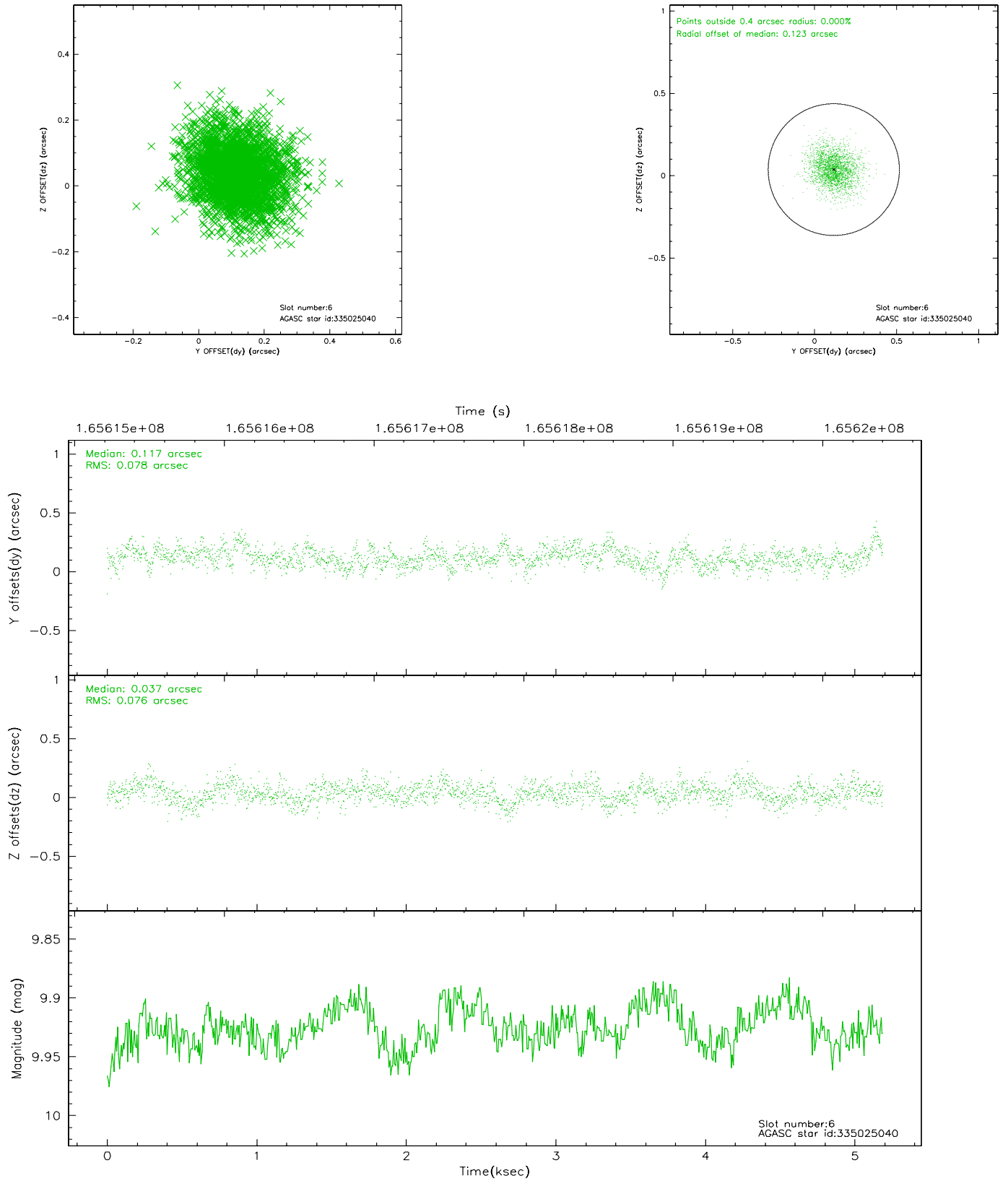
## 2.4.2 Slot 4



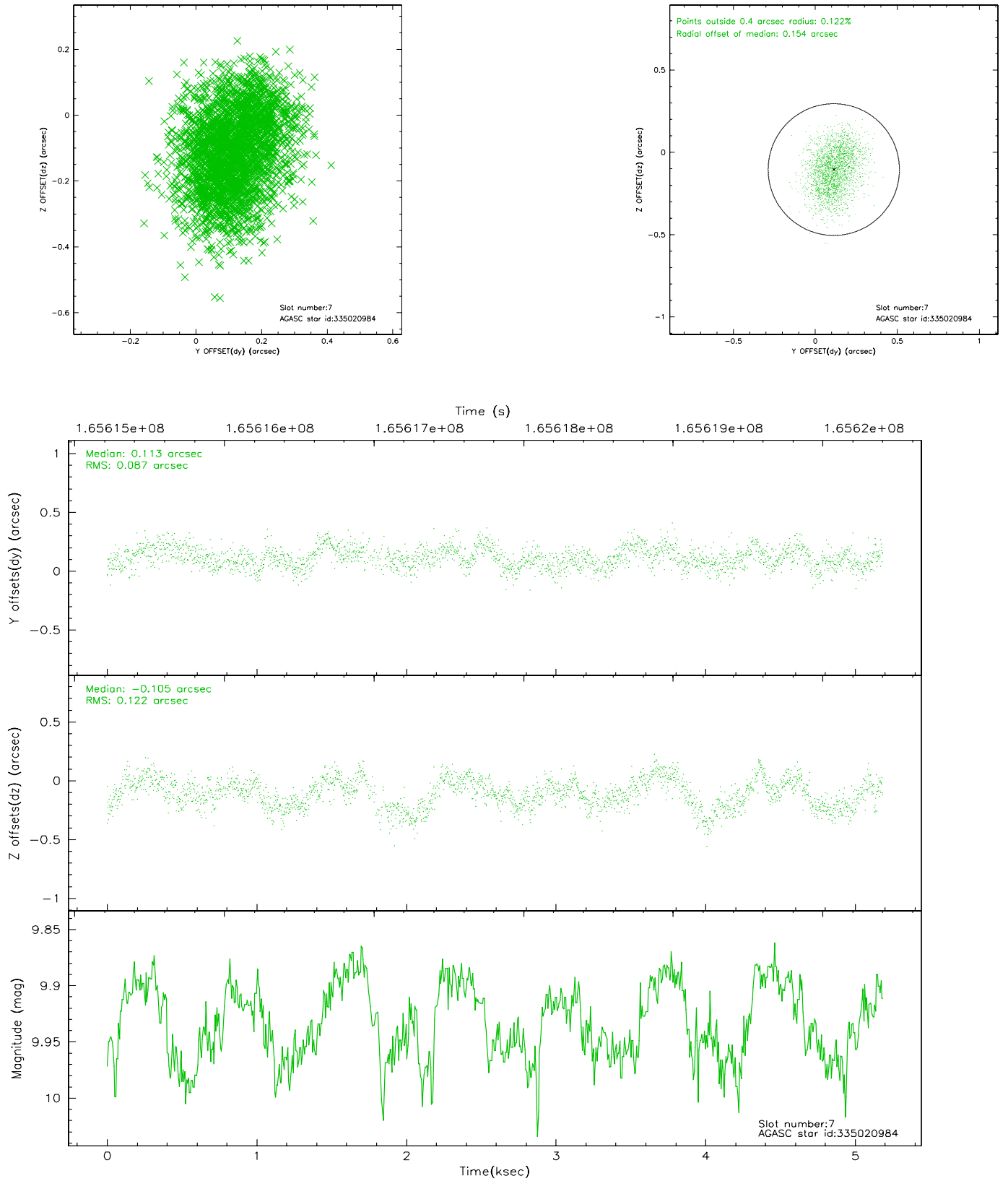
### 2.4.3 Slot 5



## 2.4.4 Slot 6

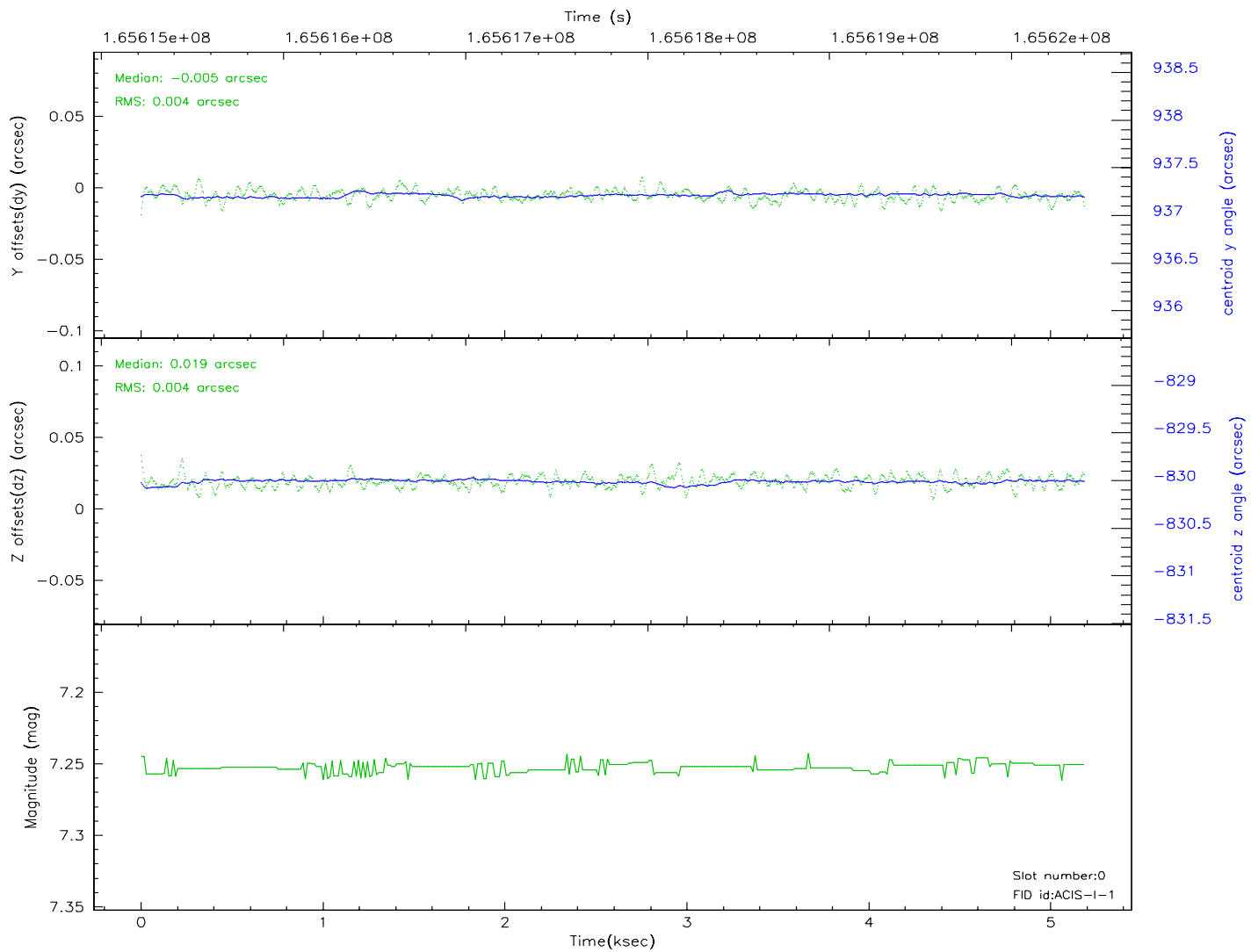
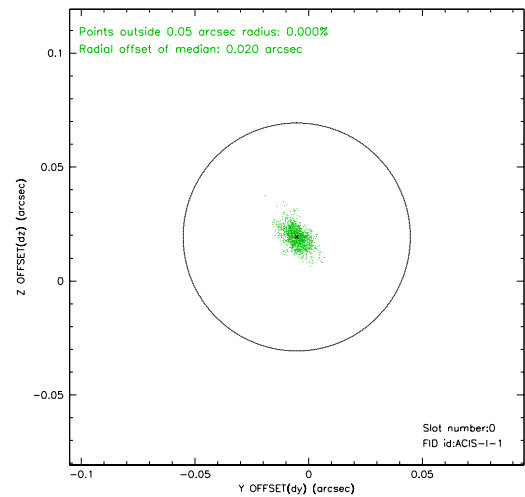
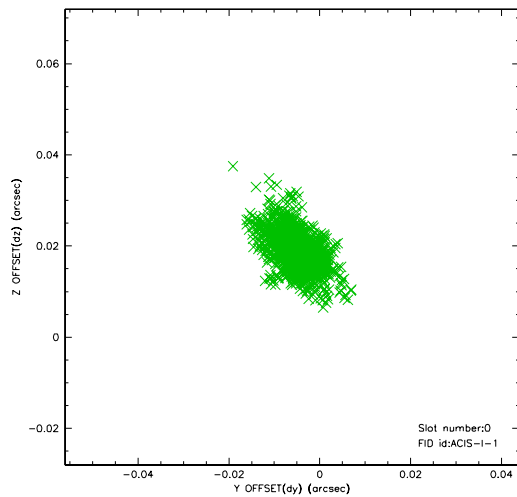


## 2.4.5 Slot 7

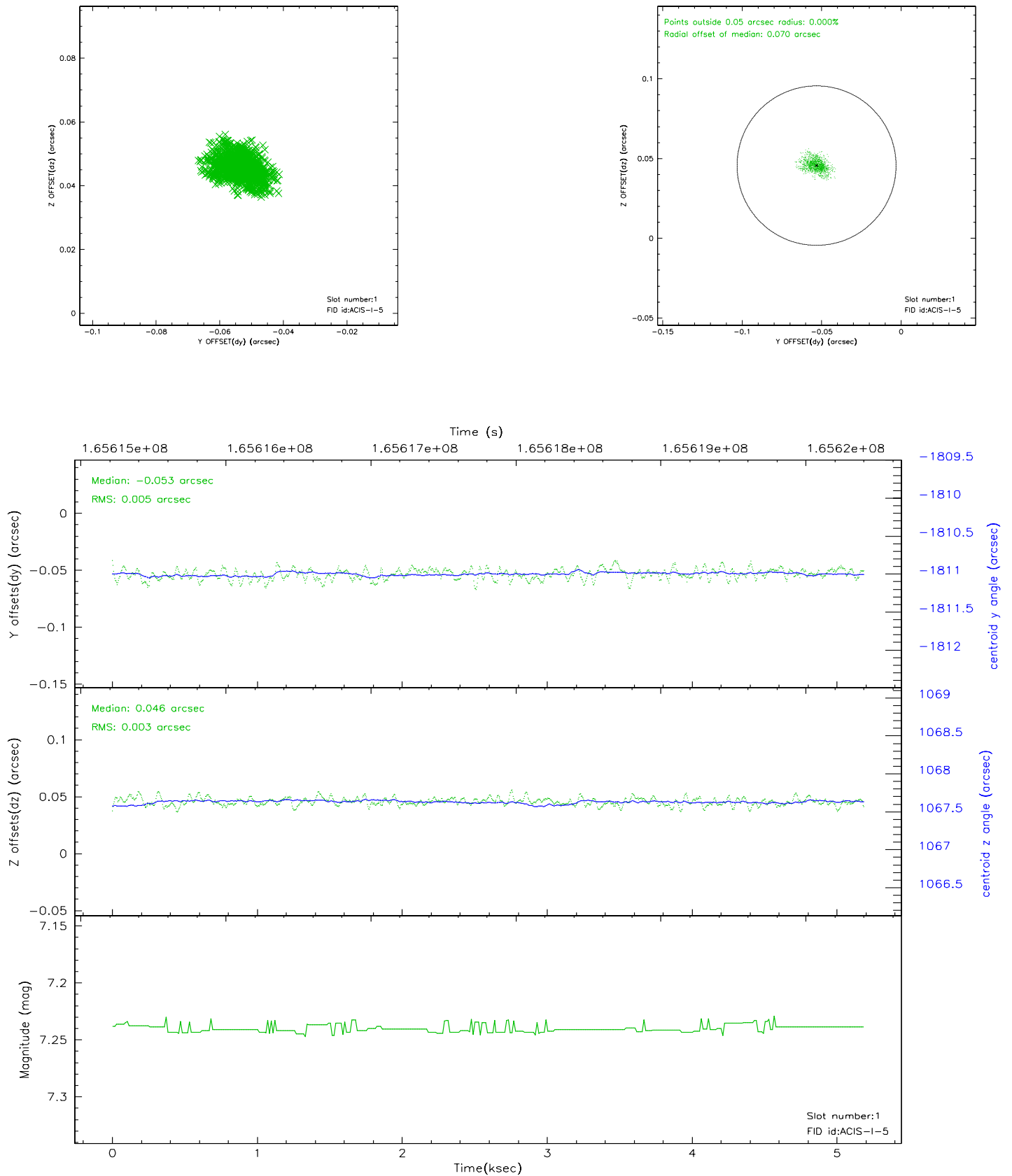


## 2.5 FID Slots

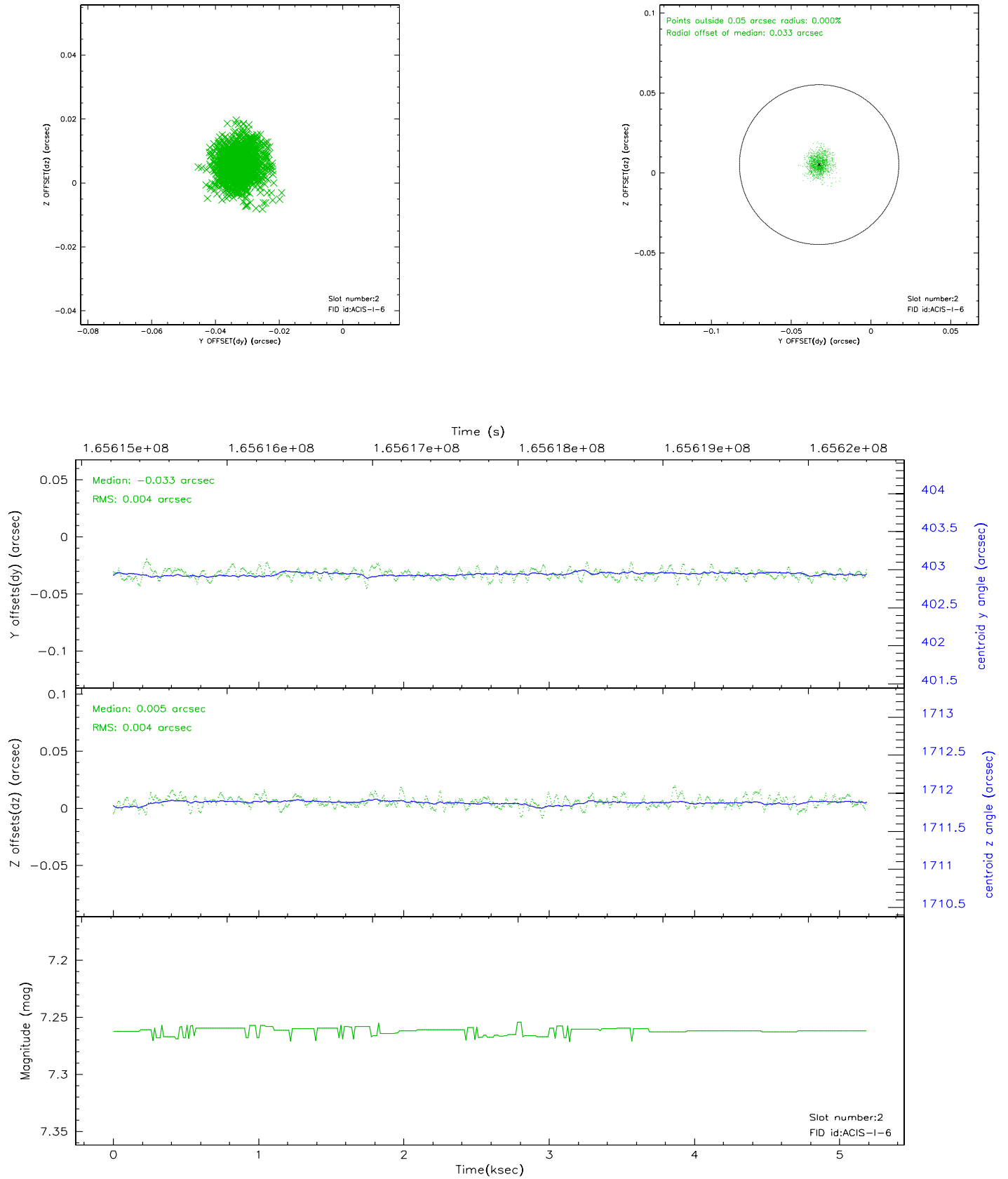
### 2.5.1 Slot 0



## 2.5.2 Slot 1

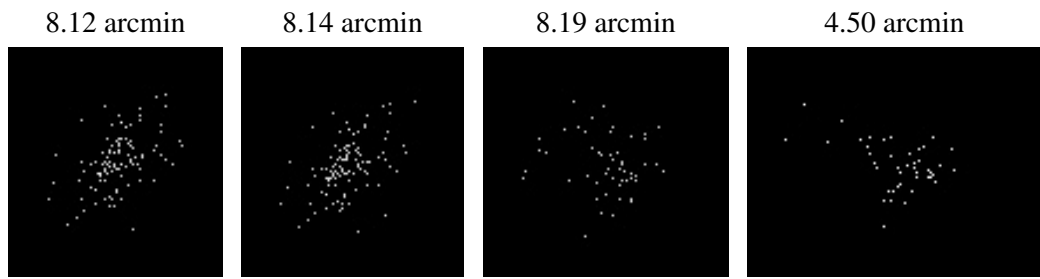


### 2.5.3 Slot 2





### 3 Point Sources



## A Summary

### A.1 Status

V&V Scientist	Jen Lauer
V&V Date (YYYY-MM-DD)	2006.07.30
V&V Edition	1
V&V Disposition and Status	OK
V&V Charge Time	4.777

### A.2 Comments